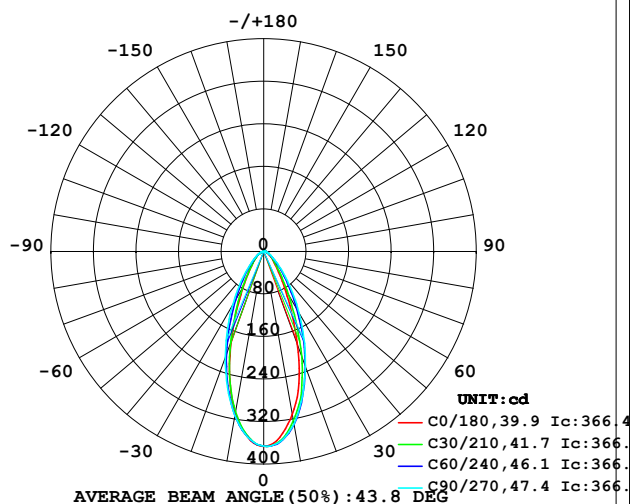


LUMINAIRE PHOTOMETRIC TEST REPORT

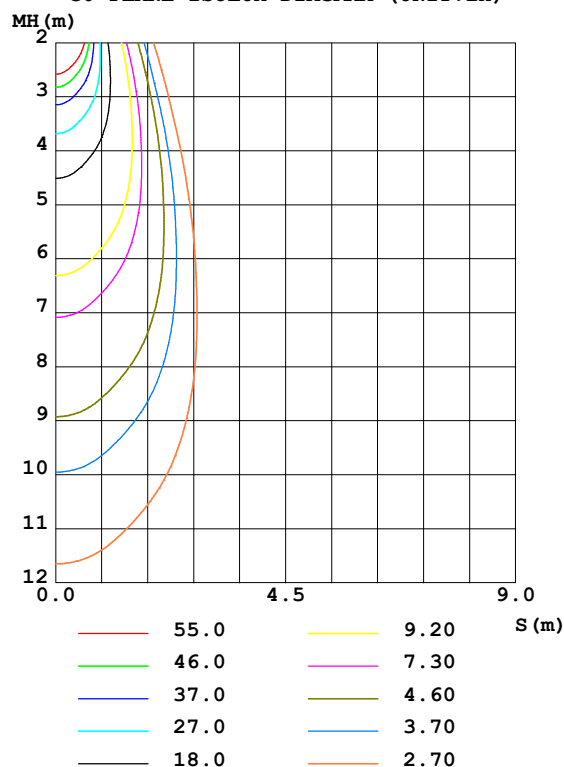
Test:U:24.00V I:0.3916A P:9.398W PF:1.000 Freq:0Hz Lamp Flux:288.434x1 lm		
NAME: SFW20-24V-3535-24-2700K+6000K-90-2700K-2040	TYPE: 硅胶	WEIGHT:
SPEC.:	DIM.: 18.5MM*18.5MM	SERIAL No.:202305004
MFR.: OLYMPIA	SUR.:1.0*0.0185	Shielding Angle:

DATA OF LAMP		PHOTOMETRIC DATA				Eff: 30.69 lm/W
MODEL	3535	I _{max} (cd)	366.9	S/MH (C0/180)	0.64	
NOMINAL POWER (W)	18	LOR (%)	100.0	S/MH (C90/270)	0.71	
RATED VOLTAGE (V)	24	TOTAL FLUX (lm)	288.43	η UP, DN (C0-180)	1.7, 50.2	
NOMINAL FLUX (lm)	288.434	CIE CLASS	DIRECT	η UP, DN (C180-360)	1.3, 46.8	
LAMPS INSIDE	1	η up (%)	3.0	CIBSE SHR NOM	0.75	
TEST VOLTAGE (V)	24	η down (%)	97.0	CIBSE SHR MAX	0.75	

LUMINOUS INTENSITY DISTRIBUTION DIAGRAM



C0 PLANE ISOLUX DIAGRAM (UNIT:lx)



C Range: 0 - 360DEG
C Interval: 30.0DEG
Test Speed: HIGH
Temperature: 25.3DEG
Operators: WFW
Test Date: 2023-05-23

γ Range: 0 - 180DEG
γ Interval: 1.0DEG
Test System: EVERFINE GO-2000B_V1 SYSTEM V2.0.269
Humidity: 65.0%
Test Distance: 9.200m [K=1.0000]
Remarks:

ZONAL FLUX DIAGRAM

ZONAL FLUX DIAGRAM:

γ	C0	C45	C90	C135	C180	C225	C270	C315	γ	Φ zone	Φ total	%lum, lamp
10	311.2	326.1	329.2	313.7	308.4	309.4	313.9	310.8	0- 10	32.45	32.45	11.2,11.2
20	186.4	219.1	230.3	209.3	178.9	193.6	211.3	207.8	10- 20	72.76	105.2	36.5,36.5
30	79.30	109.1	133.2	112.3	77.27	94.12	117.2	110.2	20- 30	68.82	174.0	60.3,60.3
40	36.07	50.33	66.07	53.61	36.28	43.98	55.70	51.83	30- 40	45.61	219.6	76.1,76.1
50	20.57	25.27	30.58	26.20	20.75	22.34	25.97	25.11	40- 50	27.15	246.8	85.6,85.6
60	12.30	13.93	15.37	13.96	11.75	12.06	13.53	13.51	50- 60	16.31	263.1	91.2,91.2
70	7.297	7.660	8.172	7.301	6.141	6.198	7.056	7.150	60- 70	9.845	272.9	94.6,94.6
80	3.582	3.564	3.475	3.094	2.258	2.181	2.496	2.844	70- 80	5.165	278.1	96.4,96.4
90	1.162	1.146	1.136	1.230	0.4825	0.4641	0.3813	0.4100	80- 90	1.745	279.8	97,97
100	1.015	1.082	1.176	1.212	0.5882	0.5629	0.5175	0.4448	90-100	0.8706	280.7	97.3,97.3
110	1.023	1.098	1.241	1.211	0.7843	0.7815	0.7536	0.6811	100-110	0.9288	281.6	97.6,97.6
120	1.161	1.251	1.397	1.339	1.071	1.088	1.070	1.005	110-120	1.039	282.7	98,98
130	1.472	1.540	1.649	1.616	1.458	1.458	1.432	1.380	120-130	1.190	283.9	98.4,98.4
140	1.909	1.910	1.990	1.993	1.810	1.809	1.759	1.739	130-140	1.297	285.2	98.9,98.9
150	2.341	2.282	2.287	2.347	2.091	2.096	2.040	2.005	140-150	1.271	286.4	99.3,99.3
160	2.568	2.503	2.498	2.573	2.247	2.287	2.231	2.181	150-160	1.059	287.5	99.7,99.7
170	2.604	2.554	2.607	2.600	2.372	2.433	2.442	2.347	160-170	0.6898	288.2	99.9,99.9
180	2.573	2.593	2.618	2.591	2.533	2.586	2.608	2.571	170-180	0.2408	288.4	100,100
DEG	LUMINOUS INTENSITY:cd									UNIT:lm		

Conical surface Flux(90deg): 234.97 lm

%lum = 81.5%

%lamp = 81.5%

Conical surface Flux(120deg): 263.09 lm

%lum = 91.2%

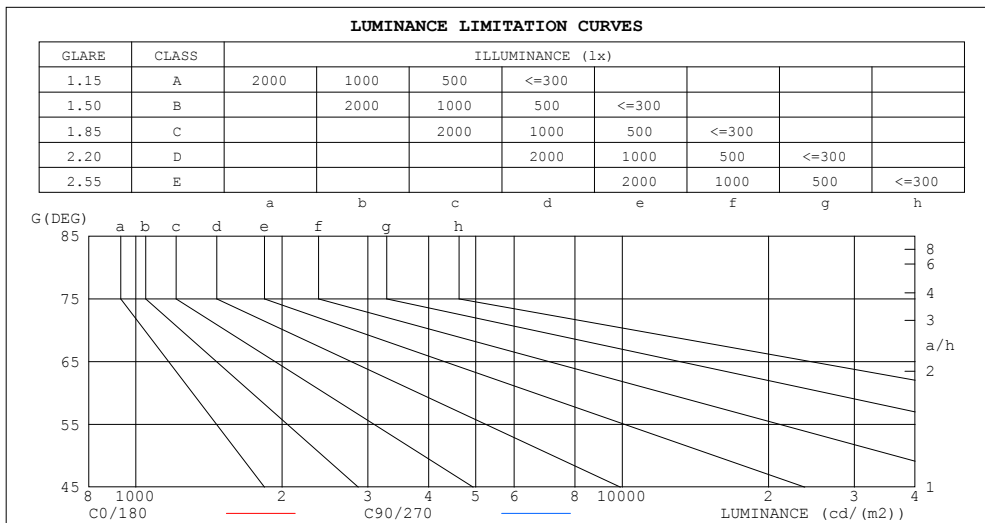
%lamp = 91.2%

C Range: 0 - 360DEG
C Interval: 30.0DEG
Test Speed: HIGH
Temperature:25.3DEG
Operators:WFW
Test Date:2023-05-23

γ Range: 0 - 180DEG
 γ Interval: 1.0DEG
Test System:EVERFINE GO-2000B_V1 SYSTEM V2.0.269
Humidity:65.0%
Test Distance:9.200m [K=1.0000]
Remarks:

LUMINANCE LIMITATION CURVES

Test:U:24.00V I:0.3916A P:9.398W PF:1.000 Freq:0Hz Lamp Flux:288.434x1 lm		
NAME: SFW20-24V-3535-24-2700K+6000K-90-2700K-2040	TYPE: 硅胶	WEIGHT:
SPEC.:	DIM.: 18.5MM*18.5MM	SERIAL No.:202305004
MFR.: OLYMPIA	SUR.:1.0*0.0185	Shielding Angle:



LUMINANCE cd/(m2)		
G (DEG)	C0/180	C90/270
85	240	199
80	206	200
75	206	218
70	213	239
65	227	267
60	246	307
55	276	370
50	320	476
45	379	638

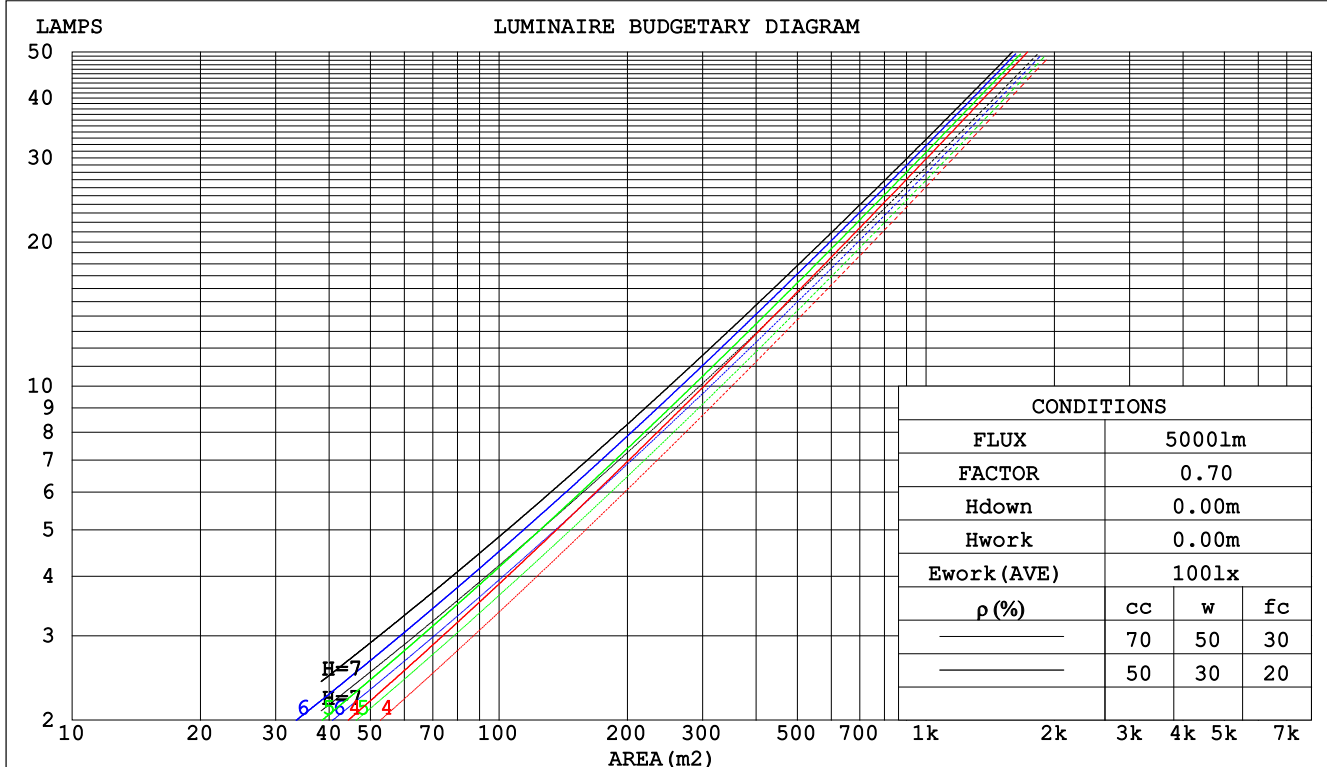
C Range: 0 - 360DEG
C Interval: 30.0DEG
Test Speed: HIGH
Temperature:25.3DEG
Operators:WFW
Test Date:2023-05-23

γ Range: 0 - 180DEG
 γ Interval: 1.0DEG
Test System:EVERFINE GO-2000B_V1 SYSTEM V2.0.269
Humidity:65.0%
Test Distance:9.200m [K=1.0000]
Remarks:

CU AND LUMINAIRE BUDGETARY ESTIMATE DIAGRAM

Test:U:24.00V I:0.3916A P:9.398W PF:1.000 Freq:0Hz Lamp Flux:288.434x1 lm		
NAME: SFW20-24V-3535-24-2700K+6000K-90-2700K-2040	TYPE: 硅胶	WEIGHT:
SPEC.:	DIM.: 18.5MM*18.5MM	SERIAL No.:202305004
MFR.: OLYMPIA	SUR.:1.0*0.0185	Shielding Angle:

pcc	80%			70%			50%			30%			10%			0
pw	50%	30%	10%	50%	30%	10%	50%	30%	10%	50%	30%	10%	50%	30%	10%	0
pfc	20%			20%			20%			20%			20%			0
RCR	RCR:Room Cavity Ratio						Coefficients of Utilization(CU)									
0.0	1.18	1.18	1.18	1.15	1.15	1.15	1.09	1.09	1.09	1.04	1.04	1.04	.99	.99	.99	.97
1.0	1.08	1.05	1.03	1.06	1.03	1.01	1.01	.99	.97	.97	.95	.94	.93	.92	.90	.88
2.0	.99	.95	.91	.97	.93	.89	.93	.90	.87	.90	.87	.85	.87	.84	.82	.80
3.0	.91	.86	.81	.90	.84	.80	.87	.82	.79	.84	.80	.77	.81	.78	.75	.74
4.0	.85	.78	.74	.83	.77	.73	.81	.76	.72	.78	.74	.71	.76	.72	.69	.68
5.0	.79	.72	.67	.77	.71	.67	.75	.70	.66	.73	.69	.65	.71	.67	.64	.62
6.0	.73	.67	.62	.72	.66	.62	.70	.65	.61	.69	.64	.60	.67	.63	.60	.58
7.0	.69	.62	.58	.68	.62	.57	.66	.61	.57	.65	.60	.56	.63	.59	.56	.54
8.0	.65	.58	.54	.64	.58	.53	.62	.57	.53	.61	.56	.53	.60	.56	.52	.51
9.0	.61	.55	.50	.60	.54	.50	.59	.54	.50	.58	.53	.49	.57	.52	.49	.48
10.0	.58	.51	.47	.57	.51	.47	.56	.51	.47	.55	.50	.47	.54	.50	.46	.45



C Range: 0 - 360DEG
C Interval: 30.0DEG
Test Speed: HIGH
Temperature:25.3DEG
Operators:WFW
Test Date:2023-05-23

γ Range: 0 - 180DEG
γ Interval: 1.0DEG
Test System:EVERFINE GO-2000B_V1 SYSTEM V2.0.269
Humidity:65.0%
Test Distance:9.200m [K=1.0000]
Remarks:

WEC AND CCEC

Test:U:24.00V I:0.3916A P:9.398W PF:1.000 Freq:0Hz Lamp Flux:288.434x1 lm		
NAME: SFW20-24V-3535-24-2700K+6000K-90-2700K-2040	TYPE: 硅胶	WEIGHT:
SPEC.:	DIM.: 18.5MM*18.5MM	SERIAL No.:202305004
MFR.: OLYMPIA	SUR.:1.0*0.0185	Shielding Angle:

pcc	80%			70%			50%			30%			10%			0	
pw	50%	30%	10%	50%	30%	10%	50%	30%	10%	50%	30%	10%	50%	30%	10%	0	
pfc	20%			20%			20%			20%			20%			0	
RCR	RCR:Room Cavity Ratio						Wall Exitance Coefficients(WEC)										
0.0																	
1.0	.211	.120	.038	.203	.116	.037	.189	.108	.035	.176	.101	.033	.163	.095	.031		
2.0	.200	.110	.034	.193	.107	.033	.181	.101	.031	.170	.095	.030	.159	.090	.028		
3.0	.188	.100	.030	.182	.098	.029	.172	.093	.028	.162	.089	.027	.152	.084	.026		
4.0	.177	.092	.027	.172	.090	.027	.162	.086	.026	.153	.082	.025	.145	.079	.024		
5.0	.166	.085	.025	.162	.083	.024	.154	.080	.024	.146	.077	.023	.138	.074	.022		
6.0	.157	.079	.023	.153	.077	.022	.145	.075	.022	.139	.072	.021	.132	.069	.021		
7.0	.148	.073	.021	.145	.072	.021	.138	.070	.020	.132	.068	.020	.126	.065	.019		
8.0	.141	.069	.019	.137	.068	.019	.131	.066	.019	.126	.064	.018	.120	.062	.018		
9.0	.134	.065	.018	.131	.064	.018	.125	.062	.018	.120	.060	.017	.115	.059	.017		
10.0	.127	.061	.017	.125	.060	.017	.120	.059	.017	.115	.057	.016	.110	.056	.016		

pcc	80%			70%			50%			30%			10%			0
pw	50%	30%	10%	50%	30%	10%	50%	30%	10%	50%	30%	10%	50%	30%	10%	0
pfc	20%			20%			20%			20%			20%			0
RCR	RCR:Room Cavity Ratio						Ceiling Cavity Exitance Coefficients(CCEC)									
0.0	.213	.213	.213	.182	.182	.182	.124	.124	.124	.071	.071	.071	.023	.023	.023	
1.0	.196	.180	.165	.168	.154	.142	.115	.106	.098	.066	.061	.057	.021	.020	.018	
2.0	.183	.155	.132	.157	.134	.114	.107	.093	.080	.062	.054	.047	.020	.017	.015	
3.0	.172	.137	.109	.147	.118	.095	.101	.082	.066	.058	.048	.039	.019	.016	.013	
4.0	.162	.123	.092	.139	.106	.080	.096	.074	.056	.055	.043	.033	.018	.014	.011	
5.0	.154	.111	.080	.132	.096	.070	.091	.067	.049	.053	.040	.029	.017	.013	.010	
6.0	.146	.102	.071	.126	.089	.062	.087	.062	.044	.050	.036	.026	.016	.012	.009	
7.0	.140	.095	.064	.120	.082	.055	.083	.058	.039	.048	.034	.023	.016	.011	.008	
8.0	.134	.089	.058	.115	.077	.051	.080	.054	.036	.046	.032	.021	.015	.010	.007	
9.0	.128	.084	.054	.111	.073	.047	.077	.051	.033	.045	.030	.020	.014	.010	.007	
10.0	.124	.079	.050	.107	.069	.044	.074	.048	.031	.043	.029	.018	.014	.009	.006	

C Range: 0 - 360DEG
C Interval: 30.0DEG
Test Speed: HIGH
Temperature:25.3DEG
Operators:WFW
Test Date:2023-05-23

γ Range: 0 - 180DEG
γ Interval: 1.0DEG
Test System:EVERFINE GO-2000B_V1 SYSTEM V2.0.269
Humidity:65.0%
Test Distance:9.200m [K=1.0000]
Remarks:

UGR(Unified Glare Rating) Table

Test:U:24.00V I:0.3916A P:9.398W PF:1.000 Freq:0Hz Lamp Flux:288.434x1 lm										
NAME: SFW20-24V-3535-24-2700K+6000K-90-2700K-2040 TYPE:硅胶							WEIGHT:			
SPEC.:					DIM.: 18.5MM*18.5MM			SERIAL No.:202305004		
MFR.: OLYMPIA					SUR.:1.0*0.0185			Shielding Angle:		
ceiling/cavity	0.7	0.7	0.5	0.5	0.3	0.7	0.7	0.5	0.5	0.3
walls	0.5	0.3	0.5	0.3	0.3	0.5	0.3	0.5	0.3	0.3
working plane	0.2	0.2	0.2	0.2	0.2	0.2	0.2	0.2	0.2	0.2
Room dimensions	Viewed crosswise					Viewed endwise				
x = 2H y = 2H	9.9	10.9	10.1	11.1	11.4	11.8	12.8	12.0	13.0	13.3
3H	10.7	11.7	11.0	11.9	12.2	12.3	13.3	12.7	13.6	13.8
4H	11.1	12.0	11.5	12.3	12.6	12.6	13.5	12.9	13.8	14.1
6H	11.5	12.3	11.8	12.6	13.0	12.8	13.7	13.2	14.0	14.3
8H	11.6	12.5	12.0	12.8	13.1	12.9	13.7	13.2	14.0	14.3
12H	11.8	12.6	12.2	12.9	13.2	12.9	13.7	13.3	14.1	14.4
4H 2H	10.3	11.2	10.6	11.4	11.7	11.9	12.8	12.2	13.1	13.3
3H	11.3	12.1	11.7	12.4	12.8	12.6	13.4	13.0	13.8	14.1
4H	11.8	12.6	12.2	12.9	13.3	13.0	13.7	13.4	14.1	14.5
6H	12.3	13.0	12.8	13.4	13.8	13.3	14.0	13.8	14.4	14.8
8H	12.6	13.1	13.0	13.6	14.0	13.5	14.1	13.9	14.5	14.9
12H	12.8	13.3	13.2	13.7	14.2	13.6	14.1	14.0	14.5	15.0
8H 4H	12.0	12.6	12.5	13.0	13.5	13.1	13.7	13.6	14.1	14.5
6H	12.7	13.2	13.2	13.6	14.1	13.6	14.0	14.0	14.5	15.0
8H	13.0	13.4	13.5	13.9	14.4	13.8	14.2	14.3	14.7	15.2
12H	13.3	13.7	13.8	14.2	14.7	14.0	14.3	14.5	14.8	15.3
12H 4H	12.0	12.6	12.5	13.0	13.5	13.1	13.6	13.6	14.1	14.5
6H	12.7	13.2	13.2	13.6	14.1	13.6	14.0	14.1	14.5	15.0
8H	13.1	13.5	13.6	14.0	14.5	13.8	14.2	14.4	14.7	15.2
Variations with the observer position at spacings:										
S = 1.0H	+ 0.4 / - 0.5					+ 0.7 / - 0.8				
1.5H	+ 0.3 / - 0.4					+ 1.3 / - 0.7				
2.0H	+ 0.5 / - 0.5					+ 1.5 / - 0.8				

CIE Pub.117, 288.4 lm Total Lamp Luminous Flux Correct ($8\log(F/F_0) = -4.3$)

C Range: 0 - 360DEG
 C Interval: 30.0DEG
 Test Speed: HIGH
 Temperature:25.3DEG
 Operators:WFW
 Test Date:2023-05-23

γ Range: 0 - 180DEG
 γ Interval: 1.0DEG
 Test System:EVERFINE GO-2000B_V1 SYSTEM V2.0.269
 Humidity:65.0%
 Test Distance:9.200m [K=1.0000]
 Remarks:

UTILIZATION FACTORS TABLE

Test:U:24.00V I:0.3916A P:9.398W PF:1.000 Freq:0Hz Lamp Flux:288.434x1 lm		
NAME: SFW20-24V-3535-24-2700K+6000K-90-2700K-2040	TYPE: 硅胶	WEIGHT:
SPEC.:	DIM.: 18.5MM*18.5MM	SERIAL No.:202305004
MFR.: OLYMPIA	SUR.:1.0*0.0185	Shielding Angle:

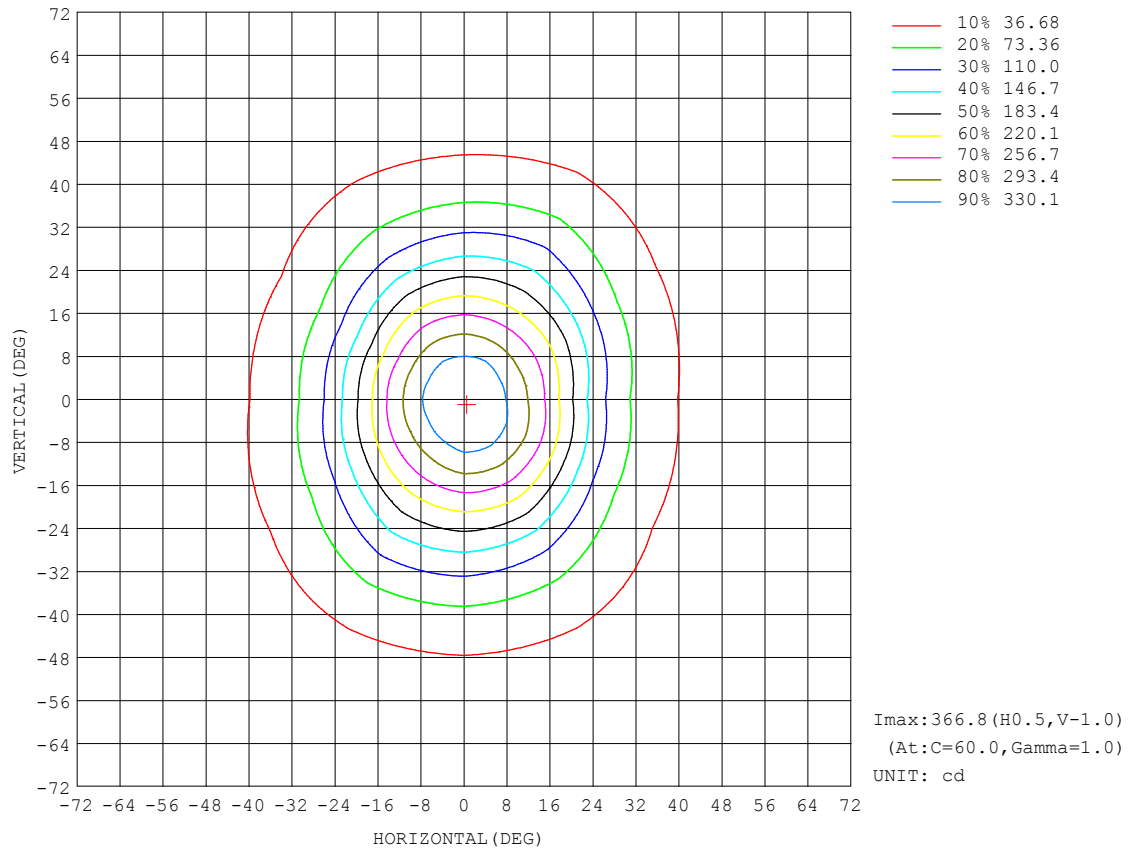
REFLECTANCE										
Ceiling	0.8	0.8	0.8	0.7	0.7	0.7	0.5	0.5	0.5	0
Walls	0.7	0.5	0.3	0.7	0.5	0.3	0.7	0.5	0.3	0
Working plane	0.2	0.2	0.2	0.2	0.2	0.2	0.2	0.2	0.2	0
ROOM INDEX	UTILIZATION FACTORS (PERCENT) $k(RI) \times RCR = 5$									
$k = 0.60$	77	69	64	76	68	64	75	68	63	59
0.80	85	77	72	84	77	72	83	76	72	67
1.00	91	84	79	90	83	78	88	83	78	73
1.25	96	89	84	95	88	84	92	87	83	77
1.50	99	93	89	98	92	88	95	90	87	81
2.00	103	98	94	102	97	93	98	94	91	84
2.50	106	101	97	104	99	96	100	96	93	86
3.00	108	103	100	106	102	99	102	99	96	88
4.00	111	107	104	108	105	102	104	101	99	91
5.00	112	109	106	110	107	105	105	103	101	92
ROOM INDEX	UF (total)									Direct
According to DIN EN 13032-2 2004			Suspended					SHRNM = 1.25		

C Range: 0 - 360DEG
 C Interval: 30.0DEG
 Test Speed: HIGH
 Temperature: 25.3DEG
 Operators: WFW
 Test Date: 2023-05-23

γ Range: 0 - 180DEG
 γ Interval: 1.0DEG
 Test System: EVERFINE GO-2000B_V1 SYSTEM V2.0.269
 Humidity: 65.0%
 Test Distance: 9.200m [K=1.0000]
 Remarks:

ISOCANDELA DIAGRAM

Test:U:24.00V I:0.3916A P:9.398W PF:1.000 Freq:0Hz Lamp Flux:288.434x1 lm		
NAME: SFW20-24V-3535-24-2700K+6000K-90-2700K-2040 TYPE:硅胶	WEIGHT:	
SPEC.:	DIM.: 18.5MM*18.5MM	SERIAL No.:202305004
MFR.: OLYMPIA	SUR.:1.0*0.0185	Shielding Angle:

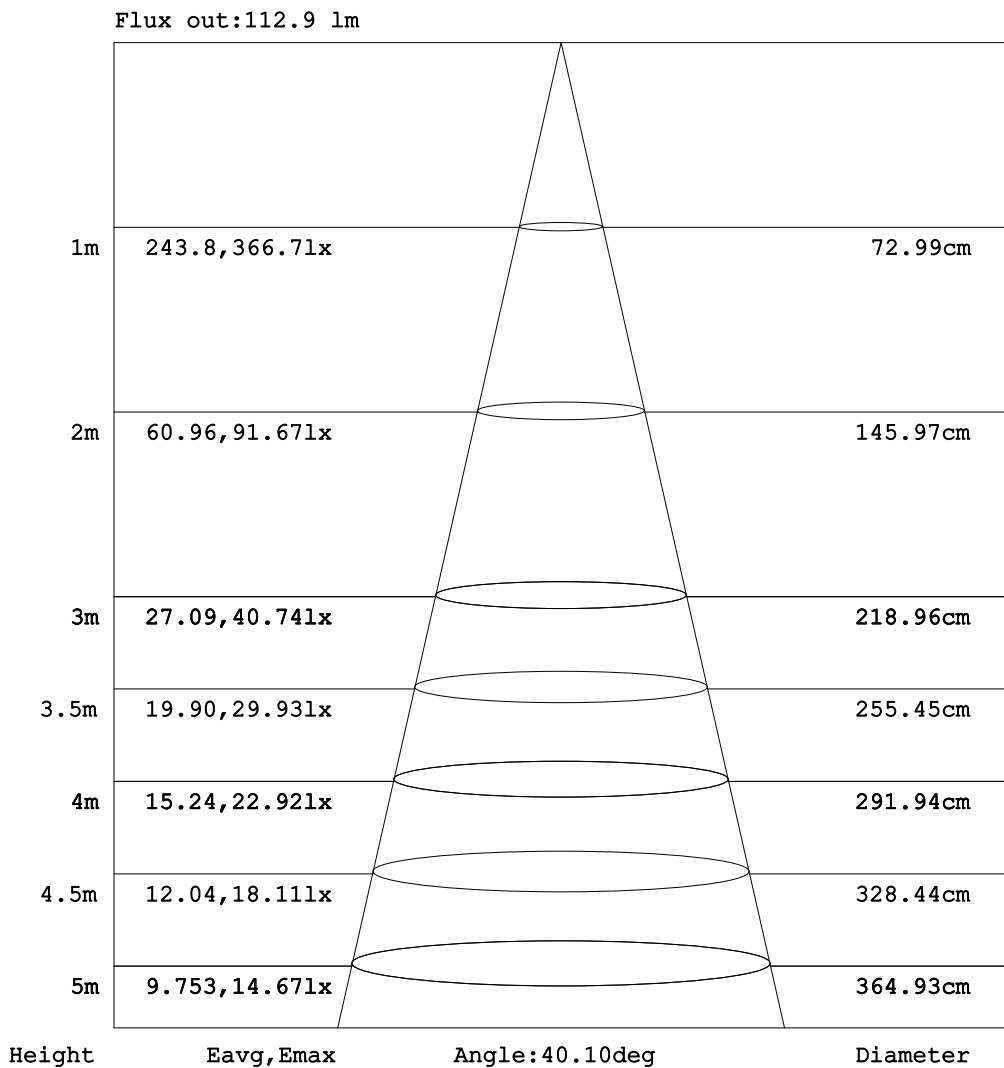


C Range: 0 - 360DEG
C Interval: 30.0DEG
Test Speed: HIGH
Temperature:25.3DEG
Operators:WFW
Test Date:2023-05-23

γ Range: 0 - 180DEG
 γ Interval: 1.0DEG
Test System:EVERFINE GO-2000B_V1 SYSTEM V2.0.269
Humidity:65.0%
Test Distance:9.200m [K=1.0000]
Remarks:

AAI Figure

Test:U:24.00V I:0.3916A P:9.398W PF:1.000 Freq:0Hz Lamp Flux:288.434x1 lm		
NAME: SFW20-24V-3535-24-2700K+6000K-90-2700K-2040	TYPE: 硅胶	WEIGHT:
SPEC.:	DIM.: 18.5MM*18.5MM	SERIAL No.:202305004
MFR.: OLYMPIA	SUR.:1.0*0.0185	Shielding Angle:



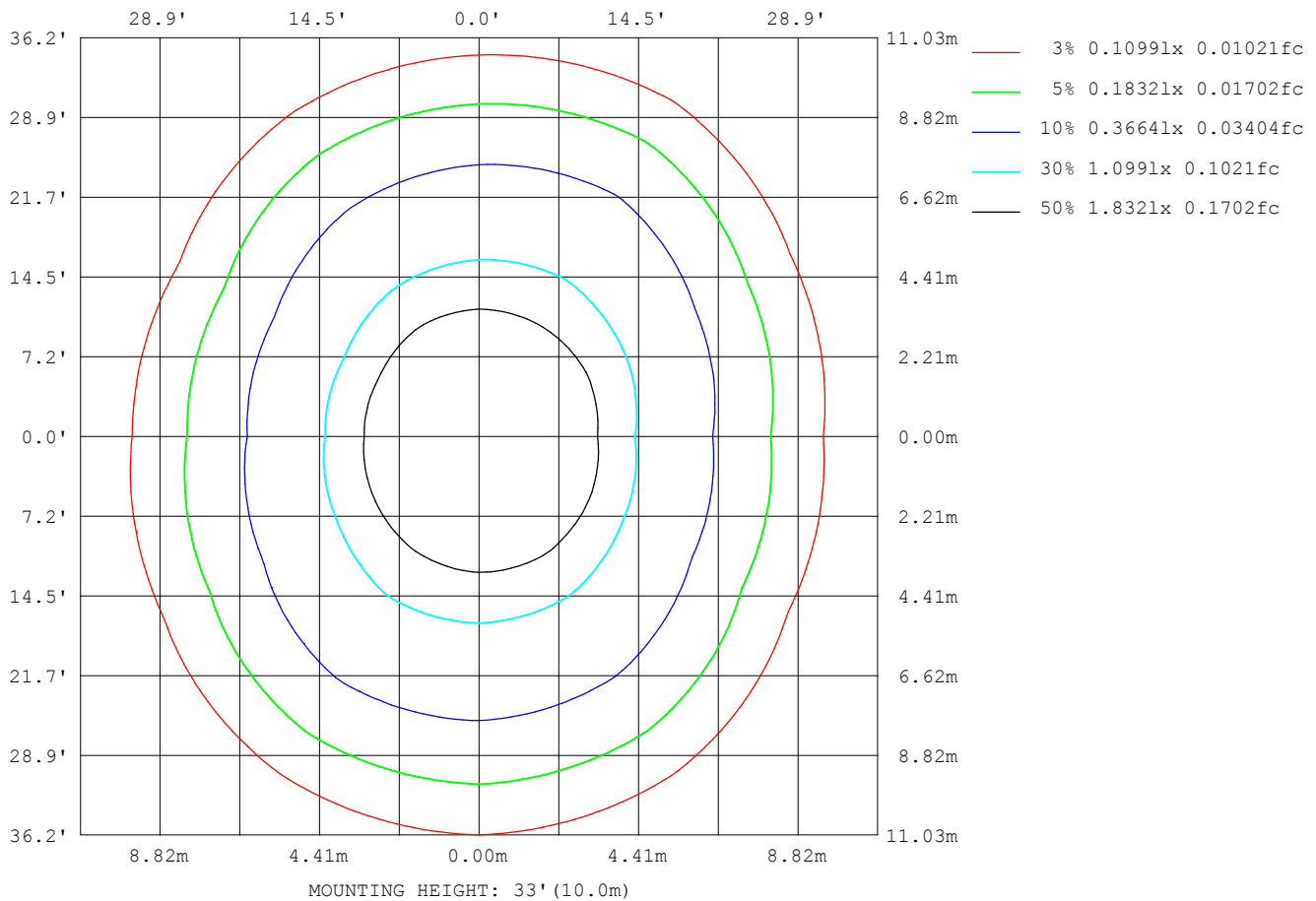
Note: The Curves indicate the illuminated area and the average illumination when the luminaire is at different distance.

C Range: 0 - 360DEG
 C Interval: 30.0DEG
 Test Speed: HIGH
 Temperature: 25.3DEG
 Operators: WFW
 Test Date: 2023-05-23

γ Range: 0 - 180DEG
 γ Interval: 1.0DEG
 Test System: EVERFINE GO-2000B_V1 SYSTEM V2.0.269
 Humidity: 65.0%
 Test Distance: 9.200m [K=1.0000]
 Remarks:

ISOLUX DIAGRAM

Test:U:24.00V I:0.3916A P:9.398W PF:1.000 Freq:0Hz Lamp Flux:288.434x1 lm		
NAME: SFW20-24V-3535-24-2700K+6000K-90-2700K-2040 TYPE:硅胶	WEIGHT:	
SPEC.:	DIM.: 18.5MM*18.5MM	SERIAL No.:202305004
MFR.: OLYMPIA	SUR.:1.0*0.0185	Shielding Angle:



C Range: 0 - 360DEG
C Interval: 30.0DEG
Test Speed: HIGH
Temperature:25.3DEG
Operators:WFW
Test Date:2023-05-23

γ Range: 0 - 180DEG
 γ Interval: 1.0DEG
Test System:EVERFINE GO-2000B_V1 SYSTEM V2.0.269
Humidity:65.0%
Test Distance:9.200m [K=1.0000]
Remarks:

LED Avg.L Report

Test:U:24.00V I:0.3916A P:9.398W PF:1.000 Freq:0Hz Lamp Flux:288.434x1 lm		
NAME: SFW20-24V-3535-24-2700K+6000K-90-2700K-2040	TYPE: 硅胶	WEIGHT:
SPEC.:	DIM.: 18.5MM*18.5MM	SERIAL No.:202305004
MFR.: OLYMPIA	SUR.:1.0*0.0185	Shielding Angle:

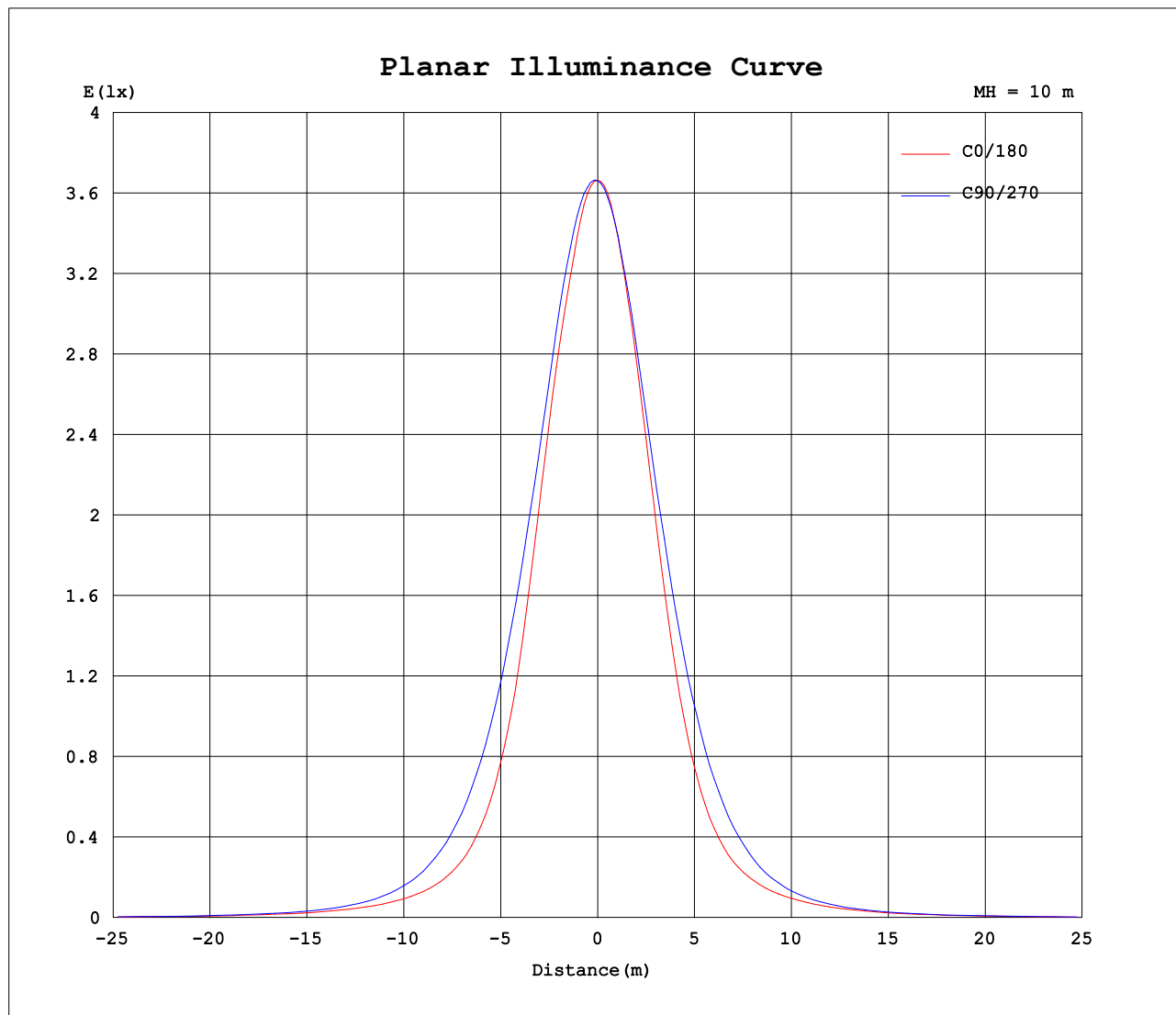
AvgL	cd/m2
L_0~180 (65) av	215
L_0~180 (75) av	181
L_0~180 (85) av	174
L_90~270 (65) av	252
L_90~270 (75) av	197
L_90~270 (85) av	154
L_45 (65) av	233
L_45 (75) av	185
L_45 (85) av	171

Standard: GB/T 29293-2012

C Range: 0 - 360DEG
C Interval: 30.0DEG
Test Speed: HIGH
Temperature:25.3DEG
Operators:WFW
Test Date:2023-05-23

γ Range: 0 - 180DEG
γ Interval: 1.0DEG
Test System:EVERFINE GO-2000B_V1 SYSTEM V2.0.269
Humidity:65.0%
Test Distance:9.200m [K=1.0000]
Remarks:

Planar Illuminance Curve



C Range: 0 - 360DEG
C Interval: 30.0DEG
Test Speed: HIGH
Temperature: 25.3DEG
Operators: WFW
Test Date: 2023-05-23

γ Range: 0 - 180DEG
 γ Interval: 1.0DEG
Test System: EVERFINE GO-2000B_V1 SYSTEM V2.0.269
Humidity: 65.0%
Test Distance: 9.200m [K=1.0000]
Remarks:

LUMINOUS DISTRIBUTION INTENSITY DATA

Test:U:24.00V I:0.3916A P:9.398W PF:1.000 Freq:0Hz Lamp Flux:288.434x1 lm		
NAME: SFW20-24V-3535-24-2700K+6000K-90-2700K-2040	TYPE: 硅胶	WEIGHT:
SPEC.:	DIM.: 18.5MM*18.5MM	SERIAL No.:202305004
MFR.: OLYMPIA	SUR.:1.0*0.0185	Shielding Angle:

Table--1

UNIT: cd

C (DEG) γ (DEG)	0	30	60	90	120	150	180	210	240	270	300	330							
0	366	366	366	366	366	366	366	366	366	366	366	366							
5	351	357	360	359	354	351	350	348	350	350	352	351							
10	311	322	330	329	317	310	308	306	313	314	313	309							
15	257	275	283	282	269	258	248	248	261	264	261	261							
20	186	209	229	230	220	199	179	182	205	211	211	205							
25	123	144	174	179	173	141	120	124	151	161	164	146							
30	79.3	93.5	125	133	130	94.6	77.3	81.6	107	117	123	97.4							
35	51.6	60.1	86.9	94.9	92.6	63.6	50.8	53.4	73.8	82.3	88.2	64.2							
40	36.1	40.8	59.9	66.1	63.2	44.0	36.3	37.1	50.9	55.7	60.3	43.4							
45	26.8	29.5	41.1	45.1	42.4	31.7	27.4	27.1	35.0	37.9	40.4	30.7							
50	20.6	22.1	28.4	30.6	28.8	23.6	20.7	20.4	24.3	26.0	27.5	22.7							
55	15.8	17.1	20.2	21.2	20.2	17.8	15.6	15.4	17.1	18.4	19.3	17.1							
60	12.3	13.2	14.6	15.4	14.5	13.4	11.7	11.5	12.6	13.5	14.1	13.0							
65	9.58	10.1	10.7	11.3	10.5	9.88	8.63	8.48	9.14	9.99	10.3	9.66							
70	7.30	7.50	7.82	8.17	7.50	7.10	6.14	5.99	6.41	7.06	7.33	6.97							
75	5.34	5.40	5.46	5.64	5.09	4.90	4.04	3.88	4.11	4.58	4.87	4.73							
80	3.58	3.60	3.53	3.47	3.13	3.06	2.26	2.13	2.23	2.50	2.83	2.86							
85	2.09	2.07	1.98	1.73	1.72	1.71	0.95	0.92	0.88	0.96	1.24	1.34							
90	1.16	1.13	1.16	1.14	1.20	1.26	0.48	0.49	0.44	0.38	0.39	0.43							
95	1.02	1.09	1.11	1.15	1.19	1.25	0.52	0.51	0.50	0.43	0.42	0.34							
100	1.02	1.05	1.11	1.18	1.20	1.23	0.59	0.54	0.59	0.52	0.52	0.37							
105	1.02	1.04	1.11	1.20	1.20	1.21	0.67	0.63	0.69	0.62	0.62	0.48							
110	1.02	1.08	1.12	1.24	1.20	1.22	0.78	0.75	0.81	0.75	0.75	0.61							
115	1.07	1.14	1.18	1.30	1.25	1.27	0.92	0.88	0.95	0.91	0.90	0.77							
120	1.16	1.23	1.28	1.40	1.33	1.35	1.07	1.06	1.12	1.07	1.07	0.94							
125	1.30	1.35	1.40	1.51	1.45	1.48	1.27	1.24	1.30	1.25	1.25	1.13							
130	1.47	1.53	1.55	1.65	1.60	1.63	1.46	1.43	1.48	1.43	1.44	1.32							
135	1.67	1.71	1.72	1.81	1.79	1.83	1.63	1.61	1.65	1.59	1.60	1.52							
140	1.91	1.93	1.89	1.99	1.95	2.03	1.81	1.79	1.83	1.76	1.77	1.70							
145	2.13	2.15	2.07	2.15	2.14	2.23	1.96	1.95	1.99	1.89	1.91	1.85							
150	2.34	2.34	2.23	2.29	2.29	2.41	2.09	2.07	2.12	2.04	2.04	1.98							
155	2.49	2.48	2.36	2.41	2.42	2.54	2.18	2.17	2.23	2.14	2.14	2.07							
160	2.57	2.56	2.44	2.50	2.53	2.62	2.25	2.25	2.33	2.23	2.22	2.14							
165	2.60	2.57	2.49	2.57	2.55	2.61	2.30	2.30	2.41	2.33	2.32	2.21							
170	2.60	2.57	2.54	2.61	2.61	2.59	2.37	2.38	2.48	2.44	2.41	2.28							
175	2.61	2.57	2.57	2.62	2.61	2.55	2.47	2.45	2.57	2.52	2.53	2.39							
180	2.57	2.57	2.61	2.62	2.62	2.56	2.53	2.55	2.62	2.61	2.61	2.53							

C Range: 0 - 360DEG
C Interval: 30.0DEG
Test Speed: HIGH
Temperature:25.3DEG
Operators:WFW
Test Date:2023-05-23

γ Range: 0 - 180DEG
γ Interval: 1.0DEG
Test System:EVERFINE GO-2000B_V1 SYSTEM V2.0.269
Humidity:65.0%
Test Distance:9.200m [K=1.0000]
Remarks:

Photometric Data Table [cd]

G/C	0.0	30.0	60.0	90.0	120.0	150.0	180.0	210.0	240.0	270.0
0.0	366.4	366.2	366.3	366.2	366.1	366.0	366.4	366.2	366.3	366.2
3.0	361.2	364.3	365.0	364.4	362.1	360.9	361.2	359.1	359.6	359.3
6.0	343.8	352.6	355.4	354.6	348.1	344.1	343.6	341.3	344.2	344.4
9.0	319.8	331.0	337.5	336.3	325.7	318.9	317.7	315.4	321.6	322.0
12.0	292.0	305.4	312.9	312.0	298.5	289.5	285.5	284.9	292.8	294.2
15.0	256.7	274.7	283.1	282.2	269.4	258.0	247.7	248.5	261.1	264.3
18.0	215.5	235.8	251.0	250.7	239.8	222.2	206.3	209.2	227.5	232.5
21.0	172.1	195.3	217.9	219.7	210.3	186.1	166.0	169.8	193.7	200.5
24.0	134.1	155.6	184.9	189.4	181.6	151.7	130.6	134.5	161.2	171.0
27.0	103.6	120.5	153.5	159.5	155.0	120.4	100.6	106.2	131.8	143.2
30.0	79.30	93.46	124.8	133.2	130.0	94.58	77.27	81.59	106.6	117.2
33.0	60.88	71.39	100.5	109.6	106.7	74.66	59.68	63.74	85.61	95.67
36.0	47.80	55.30	80.71	88.52	86.14	58.95	47.22	49.29	68.49	76.41
39.0	38.51	43.90	64.48	71.06	68.38	47.02	38.62	39.83	54.80	60.53
42.0	31.76	35.58	51.53	56.48	53.81	38.42	32.32	32.55	43.84	47.78
45.0	26.80	29.47	41.12	45.11	42.42	31.69	27.39	27.10	35.00	37.87
48.0	22.83	24.78	32.82	35.64	33.51	26.55	23.20	22.76	28.08	30.08
51.0	19.53	21.01	26.43	28.50	26.77	22.37	19.60	19.28	22.61	24.04
54.0	16.66	17.99	21.60	22.75	21.58	18.81	16.60	16.33	18.37	19.70
57.0	14.28	15.44	17.78	18.62	17.66	15.93	13.96	13.76	15.16	16.12
60.0	12.30	13.21	14.64	15.37	14.52	13.39	11.75	11.52	12.60	13.53
63.0	10.61	11.26	12.13	12.76	11.95	11.15	9.763	9.585	10.40	11.21
66.0	9.102	9.525	10.08	10.61	9.853	9.253	8.076	7.885	8.527	9.323
69.0	7.729	7.982	8.339	8.715	8.052	7.615	6.609	6.411	6.905	7.638
72.0	6.488	6.615	6.811	7.082	6.494	6.183	5.247	5.050	5.427	6.046
75.0	5.337	5.405	5.463	5.635	5.086	4.902	4.037	3.878	4.107	4.578
78.0	4.251	4.274	4.246	4.274	3.854	3.766	2.931	2.792	2.931	3.281
81.0	3.265	3.254	3.180	3.088	2.793	2.757	1.952	1.862	1.906	2.164
84.0	2.356	2.354	2.245	2.052	1.938	1.943	1.158	1.103	1.093	1.199
87.0	1.621	1.602	1.545	1.271	1.389	1.376	0.6070	0.6143	0.5719	0.5545
90.0	1.162	1.130	1.162	1.136	1.196	1.264	0.4825	0.4909	0.4373	0.3813
93.0	1.030	1.104	1.111	1.141	1.192	1.253	0.5028	0.5000	0.4726	0.3930
96.0	1.017	1.078	1.112	1.156	1.194	1.242	0.5379	0.5092	0.5179	0.4371
99.0	1.014	1.053	1.113	1.166	1.195	1.231	0.5681	0.5176	0.5631	0.5023
102.0	1.017	1.048	1.114	1.181	1.196	1.221	0.6183	0.5827	0.6184	0.5476
105.0	1.019	1.040	1.114	1.196	1.198	1.210	0.6737	0.6281	0.6888	0.6180
108.0	1.021	1.066	1.115	1.221	1.199	1.216	0.7241	0.6884	0.7542	0.6933
111.0	1.024	1.081	1.141	1.257	1.201	1.231	0.8094	0.7688	0.8345	0.7788
114.0	1.035	1.126	1.166	1.297	1.251	1.252	0.8849	0.8491	0.9250	0.8692
117.0	1.100	1.171	1.226	1.332	1.271	1.302	0.9853	0.9496	1.021	0.9596
120.0	1.161	1.226	1.276	1.397	1.327	1.352	1.071	1.060	1.116	1.070
123.0	1.251	1.302	1.337	1.468	1.407	1.423	1.187	1.166	1.227	1.171
126.0	1.322	1.382	1.422	1.538	1.487	1.508	1.302	1.276	1.337	1.286
129.0	1.437	1.488	1.512	1.614	1.568	1.598	1.413	1.402	1.448	1.397
132.0	1.557	1.588	1.603	1.709	1.673	1.704	1.523	1.507	1.563	1.502
135.0	1.673	1.709	1.723	1.815	1.794	1.830	1.634	1.608	1.654	1.593
138.0	1.804	1.840	1.819	1.915	1.884	1.945	1.739	1.724	1.764	1.703
141.0	1.945	1.971	1.924	2.021	1.995	2.071	1.845	1.819	1.865	1.789
144.0	2.090	2.101	2.035	2.116	2.105	2.191	1.935	1.905	1.950	1.884
147.0	2.216	2.227	2.131	2.207	2.196	2.302	2.011	1.990	2.041	1.960
150.0	2.341	2.337	2.226	2.287	2.287	2.408	2.091	2.070	2.121	2.040
153.0	2.437	2.428	2.302	2.367	2.377	2.493	2.141	2.126	2.187	2.085
156.0	2.527	2.498	2.372	2.433	2.447	2.563	2.181	2.206	2.247	2.156
159.0	2.563	2.553	2.432	2.488	2.493	2.608	2.232	2.231	2.307	2.211
162.0	2.598	2.564	2.457	2.528	2.528	2.617	2.262	2.286	2.357	2.281
165.0	2.600	2.566	2.493	2.568	2.553	2.612	2.297	2.302	2.407	2.332
168.0	2.603	2.568	2.528	2.603	2.588	2.600	2.342	2.362	2.453	2.382
171.0	2.605	2.570	2.548	2.608	2.608	2.588	2.387	2.382	2.498	2.447
174.0	2.607	2.571	2.568	2.613	2.611	2.558	2.448	2.452	2.548	2.518
177.0	2.603	2.573	2.603	2.618	2.613	2.553	2.513	2.478	2.603	2.553
180.0	2.573	2.573	2.613	2.618	2.618	2.563	2.533	2.548	2.623	2.608
G/C	300.0	330.0								
0.0	366.1	366.0								
3.0	360.8	360.4								
6.0	345.7	343.5								
9.0	322.3	317.9								
12.0	292.6	289.7								
15.0	261.5	260.6								
18.0	230.8	228.3								
21.0	201.1	192.9								
24.0	173.2	158.1								
27.0	147.1	125.5								
30.0	123.0	97.44								

C Range: 0 - 360DEG
 C Interval: 30.0DEG
 Test Speed: HIGH
 Temperature: 25.3DEG
 Operators: WFW
 Test Date: 2023-05-23

γ Range: 0 - 180DEG
 γ Interval: 1.0DEG
 Test System: EVERFINE GO-2000B_V1 SYSTEM V2.0.269
 Humidity: 65.0%
 Test Distance: 9.200m [K=1.0000]
 Remarks:

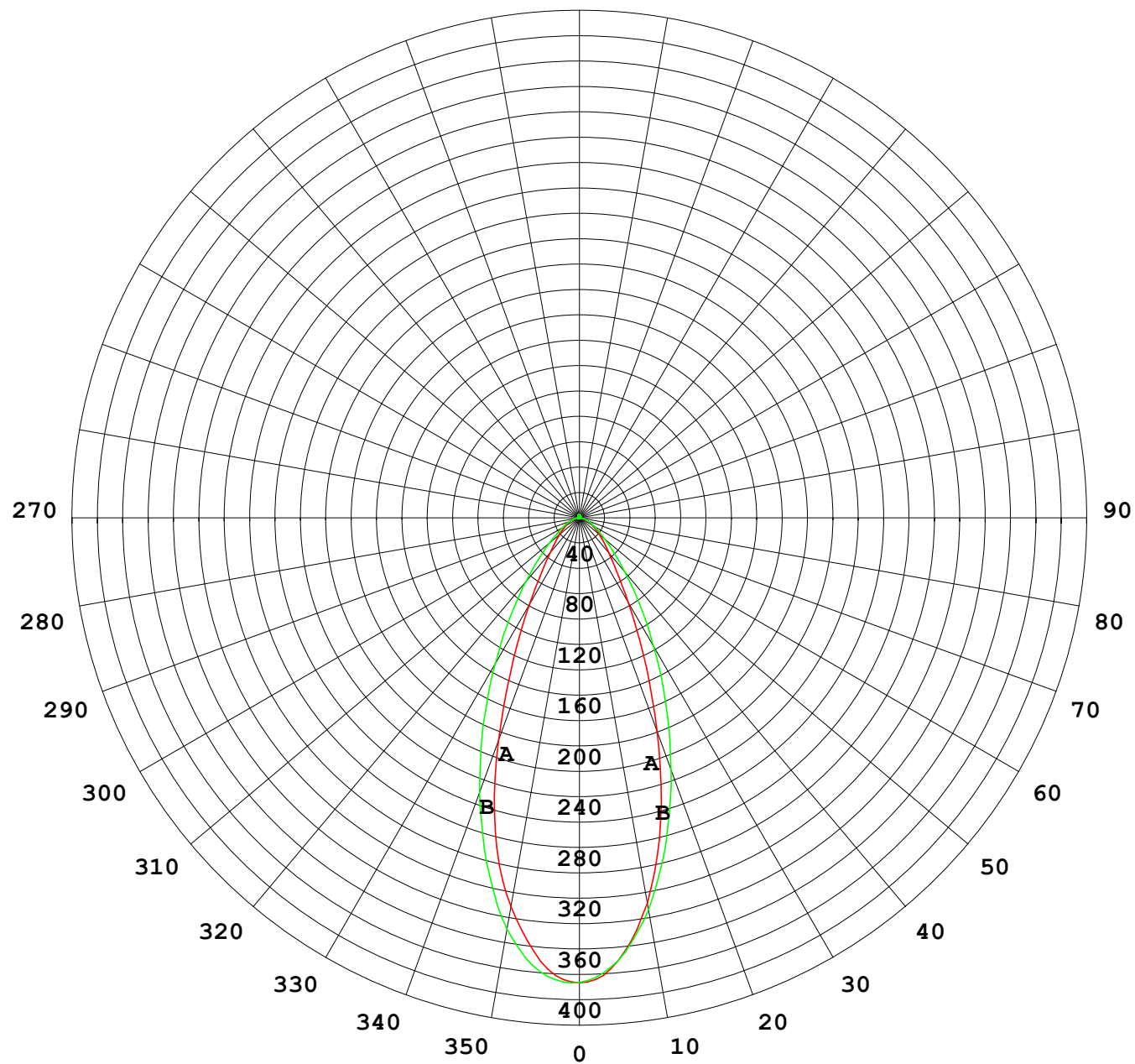
Photometric Data Table [cd]

33.0	101.2	75.82
36.0	81.85	59.41
39.0	65.14	46.76
42.0	51.41	37.80
45.0	40.38	30.69
48.0	31.96	25.42
51.0	25.51	21.40
54.0	20.65	18.16
57.0	16.94	15.20
60.0	14.06	12.96
63.0	11.64	10.81
66.0	9.603	9.067
69.0	7.884	7.497
72.0	6.286	6.040
75.0	4.871	4.728
78.0	3.614	3.602
81.0	2.474	2.530
84.0	1.509	1.601
87.0	0.7823	0.9014
90.0	0.3868	0.4332
93.0	0.3872	0.3312
96.0	0.4424	0.3440
99.0	0.4928	0.3567
102.0	0.5531	0.4319
105.0	0.6234	0.4823
108.0	0.6990	0.5525
111.0	0.7793	0.6381
114.0	0.8697	0.7484
117.0	0.9703	0.8289
120.0	1.071	0.9396
123.0	1.176	1.055
126.0	1.287	1.166
129.0	1.403	1.286
132.0	1.513	1.407
135.0	1.604	1.522
138.0	1.709	1.628
141.0	1.805	1.734
144.0	1.885	1.824
147.0	1.970	1.905
150.0	2.036	1.975
153.0	2.096	2.040
156.0	2.156	2.086
159.0	2.202	2.126
162.0	2.257	2.161
165.0	2.317	2.206
168.0	2.367	2.246
171.0	2.438	2.307
174.0	2.498	2.362
177.0	2.568	2.442
180.0	2.613	2.528

C Range: 0 - 360DEG
C Interval: 30.0DEG
Test Speed: HIGH
Temperature:25.3DEG
Operators:WFW
Test Date:2023-05-23

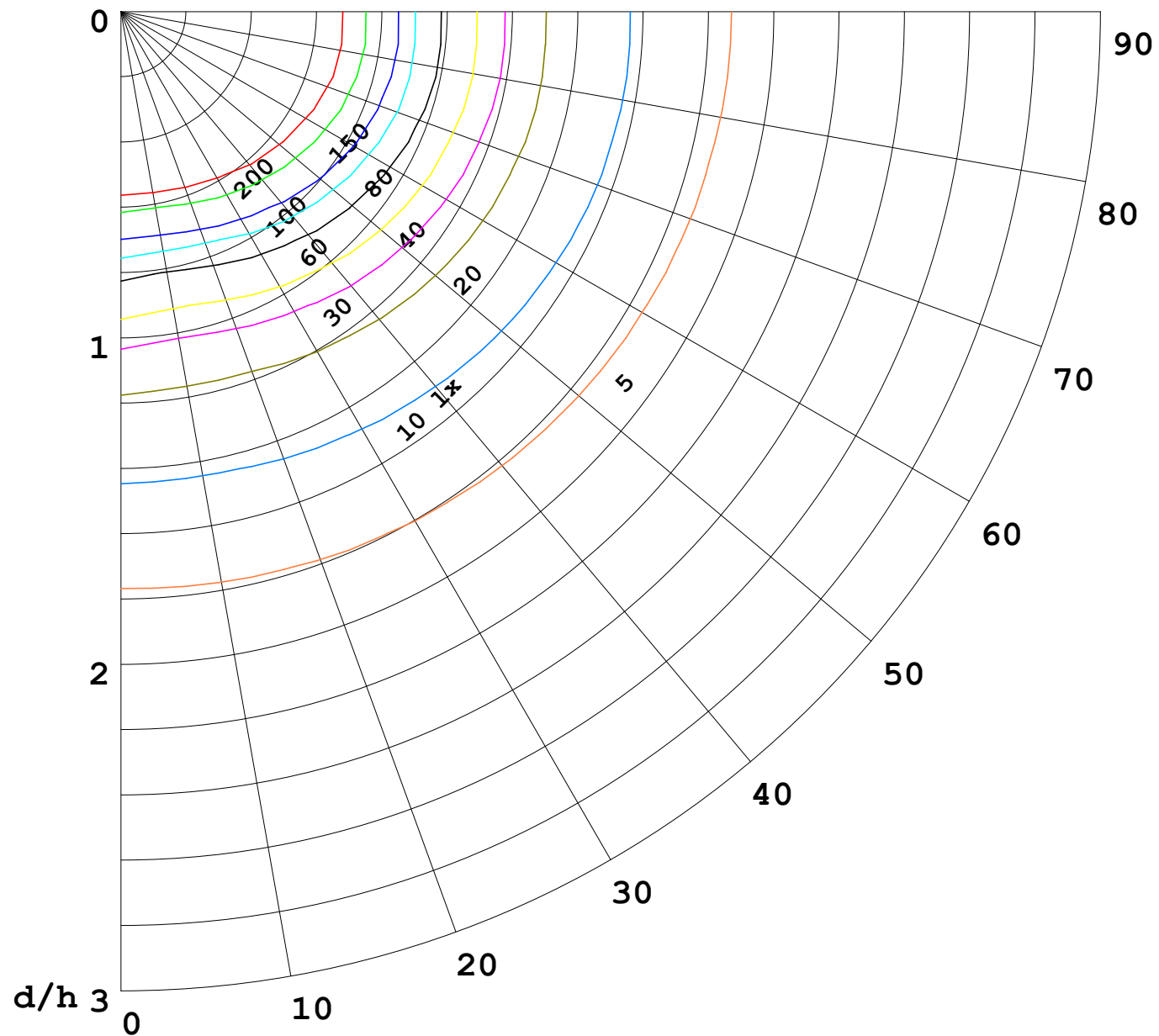
γ Range: 0 - 180DEG
γ Interval: 1.0DEG
Test System:EVERFINE GO-2000B_V1 SYSTEM V2.0.269
Humidity:65.0%
Test Distance:9.200m [K=1.0000]
Remarks:

I (cd)



1000 lm

$\kappa = 1$



F = 5000 lm
 K = 0.7
 Hcc = 0.0 m
 Hfc = 0.0 m
 Eave = 100 lx

	Pcc	Pw	Pfc
—	70	50	30
—	50	30	20

