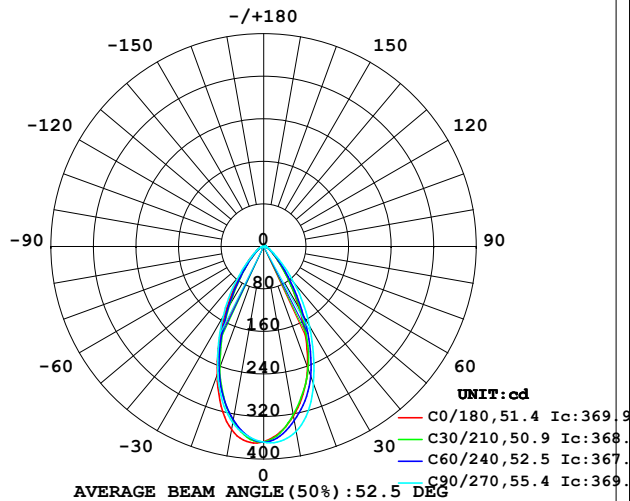


## LUMINAIRE PHOTOMETRIC TEST REPORT

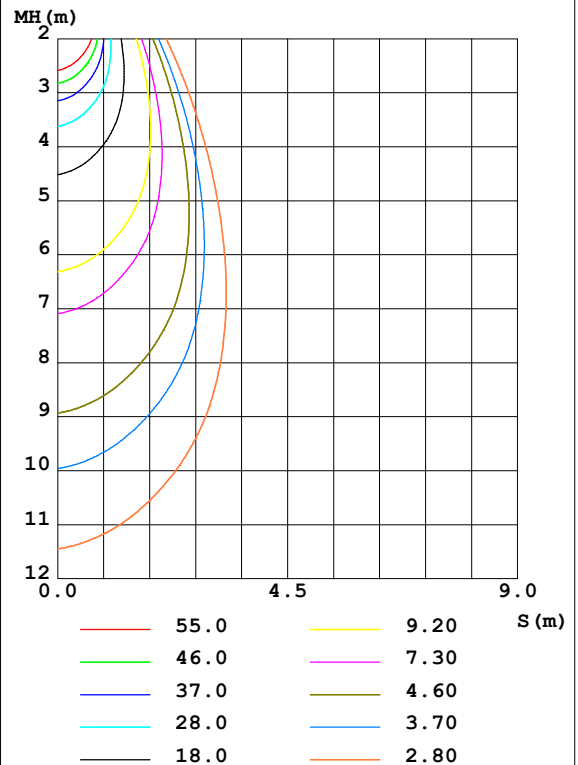
Test:U:24.00V I:0.3939A P:9.432W PF:1.000 Freq:0Hz Lamp Flux:362.222x1 lm		
NAME: SFW20-24V-3535-24-2700K+6000K-90-2700K-38	TYPE: 硅胶	WEIGHT:
SPEC.:	DIM.: 18.5MM*18.5MM	SERIAL No.:202305005
MFR.: OLYMPIA	SUR.:1.0*0.0185	Shielding Angle:

DATA OF LAMP		PHOTOMETRIC DATA				Eff: 38.40 lm/W
MODEL	3535	I <sub>max</sub> (cd)	373.8	S/MH (C0/180)	0.82	
NOMINAL POWER (W)	18	LOR (%)	100.0	S/MH (C90/270)	0.81	
RATED VOLTAGE (V)	24	TOTAL FLUX (lm)	362.22	η UP, DN (C0-180)	1.7, 49.7	
NOMINAL FLUX (lm)	362.222	CIE CLASS	DIRECT	η UP, DN (C180-360)	1.3, 47.2	
LAMPS INSIDE	1	η up (%)	3.0	CIBSE SHR NOM	0.75	
TEST VOLTAGE (V)	24	η down (%)	97.0	CIBSE SHR MAX	0.85	

LUMINOUS INTENSITY DISTRIBUTION DIAGRAM



C0 PLANE ISOLUX DIAGRAM (UNIT:lx)



C Range: 0 - 360DEG  
C Interval: 30.0DEG  
Test Speed: HIGH  
Temperature: 25.3DEG  
Operators: WFW  
Test Date: 2023-05-24

γ Range: 0 - 180DEG  
γ Interval: 1.0DEG  
Test System: EVERFINE GO-2000B\_V1 SYSTEM V2.0.269  
Humidity: 65.0%  
Test Distance: 9.200m [K=1.0000]  
Remarks:

## ZONAL FLUX DIAGRAM

ZONAL FLUX DIAGRAM:

$\gamma$	C0	C45	C90	C135	C180	C225	C270	C315	$\gamma$	$\Phi$ zone	$\Phi$ total	%lum, lamp
10	323.3	327.0	353.1	364.1	349.6	331.6	336.5	340.3	0- 10	33.83	33.83	9.34,9.34
20	241.5	251.4	274.1	274.7	256.4	244.2	253.1	257.0	10- 20	84.63	118.5	32.7,32.7
30	134.2	144.1	172.8	168.0	144.9	132.6	153.7	156.7	20- 30	92.37	210.8	58.2,58.2
40	59.96	62.68	88.88	82.90	66.66	56.97	72.90	77.79	30- 40	66.66	277.5	76.6,76.6
50	27.23	27.67	35.17	34.34	29.10	25.14	29.73	33.20	40- 50	36.29	313.8	86.6,86.6
60	14.54	14.57	15.99	15.98	14.24	12.80	14.31	16.00	50- 60	18.99	332.8	91.9,91.9
70	8.318	8.127	8.328	8.097	7.030	6.545	7.322	8.123	60- 70	10.80	343.6	94.8,94.8
80	4.130	3.933	3.731	3.524	2.554	2.377	2.762	3.279	70- 80	5.664	349.2	96.4,96.4
90	1.459	1.425	1.407	1.635	0.6082	0.5691	0.4880	0.5483	80- 90	2.041	351.3	97.97
100	1.312	1.358	1.478	1.545	0.7541	0.7012	0.6431	0.6156	90-100	1.104	352.4	97.3,97.3
110	1.362	1.432	1.578	1.578	1.015	0.9801	0.9596	0.9298	100-110	1.197	353.6	97.6,97.6
120	1.593	1.633	1.764	1.774	1.377	1.362	1.367	1.342	110-120	1.357	354.9	98.98
130	2.000	2.000	2.111	2.101	1.800	1.802	1.804	1.774	120-130	1.538	356.5	98.4,98.4
140	2.502	2.460	2.503	2.513	2.232	2.242	2.221	2.199	130-140	1.653	358.1	98.9,98.9
150	2.935	2.872	2.870	2.905	2.588	2.608	2.558	2.533	140-150	1.600	359.7	99.3,99.3
160	3.181	3.136	3.141	3.181	2.820	2.870	2.849	2.799	150-160	1.326	361.0	99.7,99.7
170	3.262	3.256	3.322	3.295	3.066	3.091	3.116	3.058	160-170	0.8739	361.9	99.9,99.9
180	3.267	3.302	3.342	3.327	3.262	3.299	3.337	3.304	170-180	0.3083	362.2	100,100
DEG	LUMINOUS INTENSITY:cd									UNIT:lm		

Conical surface Flux(90deg): 298.71 lm

%lum = 82.5%

%lamp = 82.5%

Conical surface Flux(120deg): 332.76 lm

%lum = 91.9%

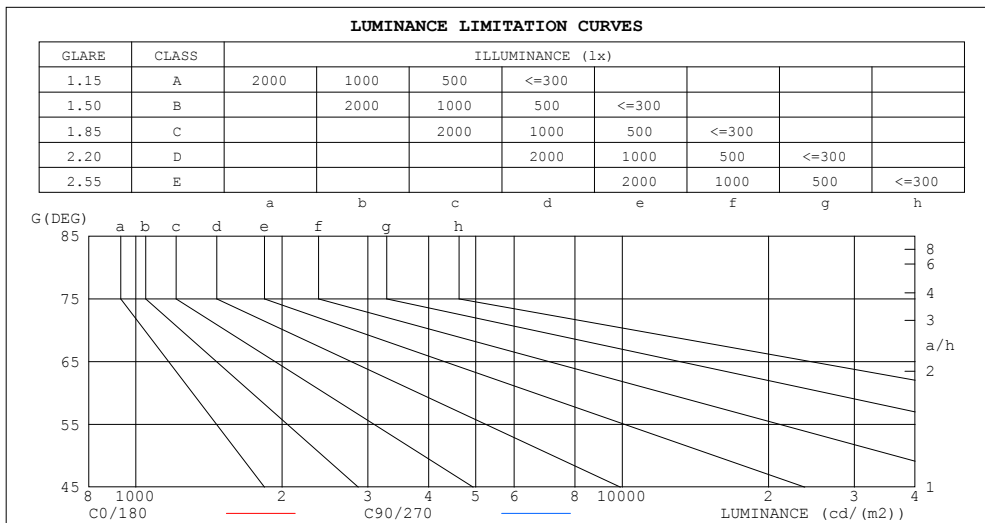
%lamp = 91.9%

C Range: 0 - 360DEG  
 C Interval: 30.0DEG  
 Test Speed: HIGH  
 Temperature:25.3DEG  
 Operators:WFW  
 Test Date:2023-05-24

$\gamma$  Range: 0 - 180DEG  
 $\gamma$  Interval: 1.0DEG  
 Test System:EVERFINE GO-2000B\_V1 SYSTEM V2.0.269  
 Humidity:65.0%  
 Test Distance:9.200m [K=1.0000]  
 Remarks:

## LUMINANCE LIMITATION CURVES

Test:U:24.00V I:0.3939A P:9.432W PF:1.000 Freq:0Hz Lamp Flux:362.222x1 lm		
NAME: SFW20-24V-3535-24-2700K+6000K-90-2700K-38	TYPE: 硅胶	WEIGHT:
SPEC.:	DIM.: 18.5MM*18.5MM	SERIAL No.:202305005
MFR.: OLYMPIA	SUR.:1.0*0.0185	Shielding Angle:



LUMINANCE cd/(m2)		
G (DEG)	C0/180	C90/270
85	286	241
80	238	215
75	235	225
70	243	243
65	261	274
60	291	320
55	341	402
50	424	547
45	563	799

C Range: 0 - 360DEG  
C Interval: 30.0DEG  
Test Speed: HIGH  
Temperature:25.3DEG  
Operators:WFW  
Test Date:2023-05-24

$\gamma$  Range: 0 - 180DEG  
 $\gamma$  Interval: 1.0DEG  
Test System:EVERFINE GO-2000B\_V1 SYSTEM V2.0.269  
Humidity:65.0%  
Test Distance:9.200m [K=1.0000]  
Remarks:



## WEC AND CCEC

Test:U:24.00V I:0.3939A P:9.432W PF:1.000 Freq:0Hz Lamp Flux:362.222x1 lm		
NAME: SFW20-24V-3535-24-2700K+6000K-90-2700K-38	TYPE: 硅胶	WEIGHT:
SPEC.:	DIM.: 18.5MM*18.5MM	SERIAL No.:202305005
MFR.: OLYMPIA	SUR.:1.0*0.0185	Shielding Angle:

pcc	80%			70%			50%			30%			10%			0	
pw	50%	30%	10%	50%	30%	10%	50%	30%	10%	50%	30%	10%	50%	30%	10%	0	
pfc	20%			20%			20%			20%			20%			0	
RCR	RCR:Room Cavity Ratio						Wall Exitance Coefficients(WEC)										
0.0																	
1.0	.212	.120	.038	.204	.116	.037	.189	.109	.035	.176	.102	.033	.164	.095	.031		
2.0	.201	.110	.034	.195	.107	.033	.182	.101	.031	.171	.096	.030	.160	.090	.029		
3.0	.190	.101	.030	.184	.099	.030	.173	.094	.029	.163	.089	.027	.154	.085	.026		
4.0	.179	.093	.027	.174	.091	.027	.164	.087	.026	.155	.083	.025	.147	.080	.024		
5.0	.169	.086	.025	.164	.084	.025	.156	.081	.024	.148	.078	.023	.141	.075	.023		
6.0	.159	.080	.023	.155	.079	.023	.148	.076	.022	.141	.073	.022	.134	.071	.021		
7.0	.151	.075	.021	.147	.073	.021	.141	.071	.020	.134	.069	.020	.128	.067	.020		
8.0	.143	.070	.020	.140	.069	.019	.134	.067	.019	.128	.065	.019	.123	.063	.018		
9.0	.136	.066	.018	.133	.065	.018	.128	.063	.018	.123	.061	.018	.118	.060	.017		
10.0	.130	.062	.017	.127	.061	.017	.122	.060	.017	.117	.058	.017	.113	.057	.016		

pcc	80%			70%			50%			30%			10%			0
pw	50%	30%	10%	50%	30%	10%	50%	30%	10%	50%	30%	10%	50%	30%	10%	0
pfc	20%			20%			20%			20%			20%			0
RCR	RCR:Room Cavity Ratio						Ceiling Cavity Exitance Coefficients(CCEC)									
0.0	.214	.214	.214	.182	.182	.182	.125	.125	.125	.072	.072	.072	.023	.023	.023	
1.0	.197	.180	.165	.168	.155	.142	.115	.106	.098	.066	.062	.057	.021	.020	.019	
2.0	.184	.156	.132	.157	.134	.114	.108	.093	.080	.062	.054	.047	.020	.017	.015	
3.0	.173	.137	.109	.148	.118	.095	.102	.082	.066	.059	.048	.039	.019	.016	.013	
4.0	.163	.123	.092	.140	.106	.080	.096	.074	.057	.056	.043	.033	.018	.014	.011	
5.0	.155	.112	.080	.133	.097	.070	.092	.068	.049	.053	.040	.029	.017	.013	.010	
6.0	.148	.103	.071	.127	.089	.062	.088	.062	.044	.051	.037	.026	.016	.012	.009	
7.0	.141	.096	.064	.121	.083	.055	.084	.058	.039	.049	.034	.023	.016	.011	.008	
8.0	.135	.089	.058	.117	.078	.051	.081	.054	.036	.047	.032	.021	.015	.011	.007	
9.0	.130	.084	.054	.112	.073	.047	.078	.051	.033	.045	.030	.020	.015	.010	.007	
10.0	.125	.080	.050	.108	.070	.044	.075	.049	.031	.044	.029	.019	.014	.010	.006	

C Range: 0 - 360DEG  
 C Interval: 30.0DEG  
 Test Speed: HIGH  
 Temperature:25.3DEG  
 Operators:WFW  
 Test Date:2023-05-24

γ Range: 0 - 180DEG  
 γ Interval: 1.0DEG  
 Test System:EVERFINE GO-2000B\_V1 SYSTEM V2.0.269  
 Humidity:65.0%  
 Test Distance:9.200m [K=1.0000]  
 Remarks:

UGR(Unified Glare Rating) Table

Test:U:24.00V I:0.3939A P:9.432W PF:1.000 Freq:0Hz Lamp Flux:362.222x1 lm										
NAME: SFW20-24V-3535-24-2700K+6000K-90-2700K-38					TYPE: 硅胶			WEIGHT:		
SPEC.:					DIM.: 18.5MM*18.5MM			SERIAL No.:202305005		
MFR.: OLYMPIA					SUR.:1.0*0.0185			Shielding Angle:		
ceiling/cavity	0.7	0.7	0.5	0.5	0.3	0.7	0.7	0.5	0.5	0.3
walls	0.5	0.3	0.5	0.3	0.3	0.5	0.3	0.5	0.3	0.3
working plane	0.2	0.2	0.2	0.2	0.2	0.2	0.2	0.2	0.2	0.2
Room dimensions	Viewed crosswise					Viewed endwise				
x = 2H y = 2H	10.0	11.1	10.3	11.3	11.5	11.1	12.1	11.3	12.3	12.6
3H	10.6	11.6	10.9	11.9	12.1	11.5	12.5	11.8	12.7	13.0
4H	10.9	11.9	11.3	12.2	12.4	11.7	12.6	12.1	12.9	13.2
6H	11.3	12.1	11.6	12.4	12.7	11.9	12.8	12.3	13.1	13.4
8H	11.4	12.2	11.8	12.5	12.9	12.0	12.8	12.3	13.1	13.5
12H	11.5	12.3	11.9	12.6	13.0	12.0	12.8	12.4	13.2	13.5
4H 2H	10.2	11.1	10.5	11.4	11.7	11.1	12.0	11.4	12.3	12.6
3H	11.0	11.8	11.4	12.1	12.5	11.7	12.5	12.1	12.9	13.2
4H	11.5	12.2	11.9	12.5	12.9	12.1	12.8	12.5	13.2	13.5
6H	11.9	12.5	12.3	12.9	13.3	12.4	13.0	12.8	13.4	13.8
8H	12.1	12.7	12.6	13.1	13.5	12.5	13.1	13.0	13.5	13.9
12H	12.3	12.9	12.8	13.3	13.7	12.6	13.2	13.1	13.6	14.1
8H 4H	11.6	12.2	12.0	12.6	13.0	12.2	12.7	12.6	13.2	13.6
6H	12.2	12.7	12.7	13.1	13.6	12.6	13.1	13.1	13.5	14.0
8H	12.5	12.9	13.0	13.4	13.9	12.8	13.2	13.3	13.7	14.2
12H	12.8	13.2	13.3	13.7	14.2	13.0	13.4	13.5	13.9	14.4
12H 4H	11.6	12.1	12.0	12.6	13.0	12.1	12.7	12.6	13.1	13.6
6H	12.2	12.7	12.7	13.1	13.6	12.6	13.1	13.1	13.5	14.0
8H	12.6	12.9	13.1	13.4	14.0	12.9	13.2	13.4	13.7	14.3
Variations with the observer position at spacings:										
S = 1.0H	+ 0.6 / - 0.8					+ 1.2 / - 1.1				
1.5H	+ 1.0 / - 0.5					+ 2.1 / - 1.0				
2.0H	+ 1.1 / - 0.5					+ 2.3 / - 0.9				

CIE Pub.117, 362.2 lm Total Lamp Luminous Flux Correct ( $8\log(F/F_0) = -3.5$ )

C Range: 0 - 360DEG  
 C Interval: 30.0DEG  
 Test Speed: HIGH  
 Temperature:25.3DEG  
 Operators:WFW  
 Test Date:2023-05-24

γ Range: 0 - 180DEG  
 γ Interval: 1.0DEG  
 Test System:EVERFINE GO-2000B\_V1 SYSTEM V2.0.269  
 Humidity:65.0%  
 Test Distance:9.200m [K=1.0000]  
 Remarks:

## UTILIZATION FACTORS TABLE

Test:U:24.00V I:0.3939A P:9.432W PF:1.000 Freq:0Hz Lamp Flux:362.222x1 lm		
NAME: SFW20-24V-3535-24-2700K+6000K-90-2700K-38	TYPE: 硅胶	WEIGHT:
SPEC.:	DIM.: 18.5MM*18.5MM	SERIAL No.:202305005
MFR.: OLYMPIA	SUR.:1.0*0.0185	Shielding Angle:

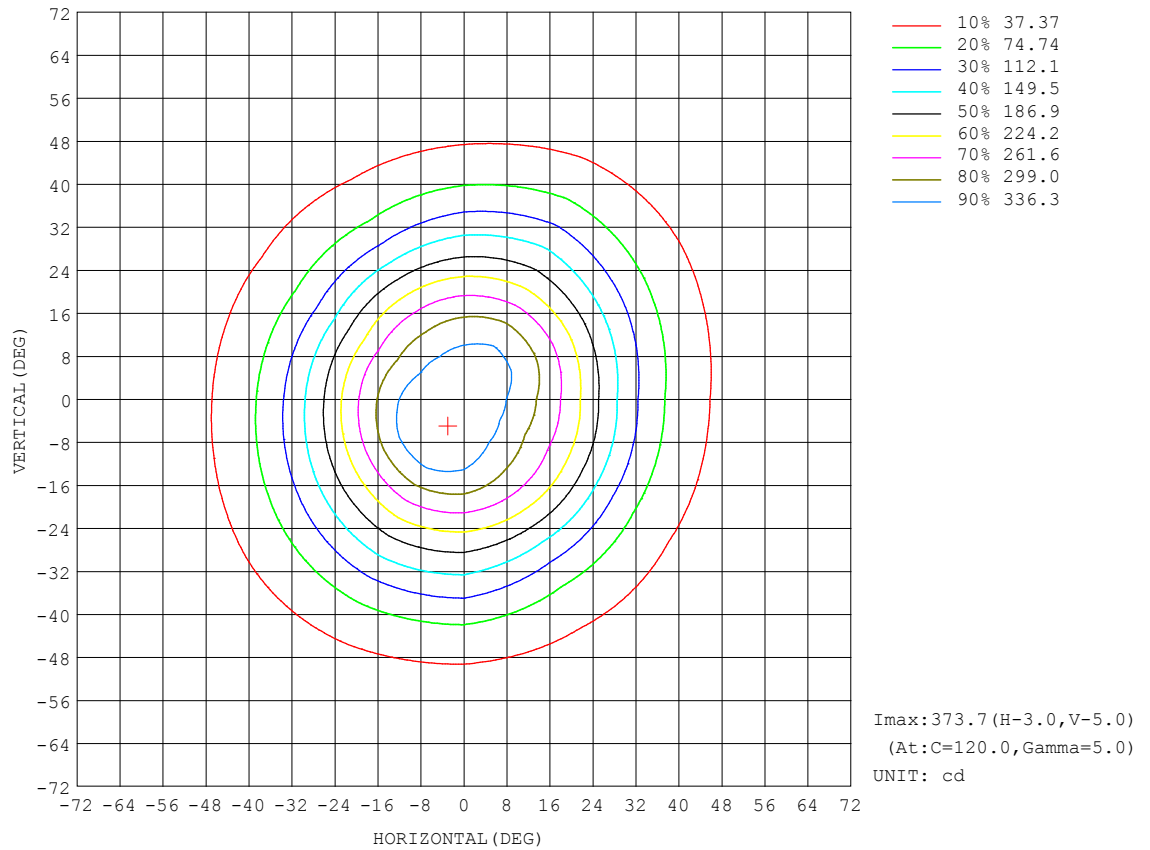
REFLECTANCE										
Ceiling	0.8	0.8	0.8	0.7	0.7	0.7	0.5	0.5	0.5	0
Walls	0.7	0.5	0.3	0.7	0.5	0.3	0.7	0.5	0.3	0
Working plane	0.2	0.2	0.2	0.2	0.2	0.2	0.2	0.2	0.2	0
ROOM INDEX	UTILIZATION FACTORS (PERCENT) $k(RI) \times RCR = 5$									
$k = 0.60$	77	69	64	76	69	64	75	68	64	59
0.80	85	78	73	84	77	73	83	76	72	67
1.00	91	84	79	90	83	79	88	83	78	73
1.25	96	89	85	95	89	84	92	87	83	78
1.50	100	93	89	98	92	88	95	91	87	81
2.00	104	98	94	102	97	93	99	95	91	85
2.50	106	101	97	104	100	96	100	97	94	87
3.00	108	104	100	106	102	99	102	99	96	88
4.00	111	107	104	108	105	102	104	101	99	91
5.00	112	109	107	110	107	105	105	103	101	92
ROOM INDEX	UF (total)									Direct
According to DIN EN 13032-2 2004			Suspended					SHRNM = 1.25		

C Range: 0 - 360DEG  
 C Interval: 30.0DEG  
 Test Speed: HIGH  
 Temperature:25.3DEG  
 Operators:WFW  
 Test Date:2023-05-24

γ Range: 0 - 180DEG  
 γ Interval: 1.0DEG  
 Test System:EVERFINE GO-2000B\_V1 SYSTEM V2.0.269  
 Humidity:65.0%  
 Test Distance:9.200m [K=1.0000]  
 Remarks:

## ISOCANDELA DIAGRAM

Test:U:24.00V I:0.3939A P:9.432W PF:1.000 Freq:0Hz Lamp Flux:362.222x1 lm		
NAME: SFW20-24V-3535-24-2700K+6000K-90-2700K-38	TYPE: 硅胶	WEIGHT:
SPEC.:	DIM.: 18.5MM*18.5MM	SERIAL No.:202305005
MFR.: OLYMPIA	SUR.:1.0*0.0185	Shielding Angle:



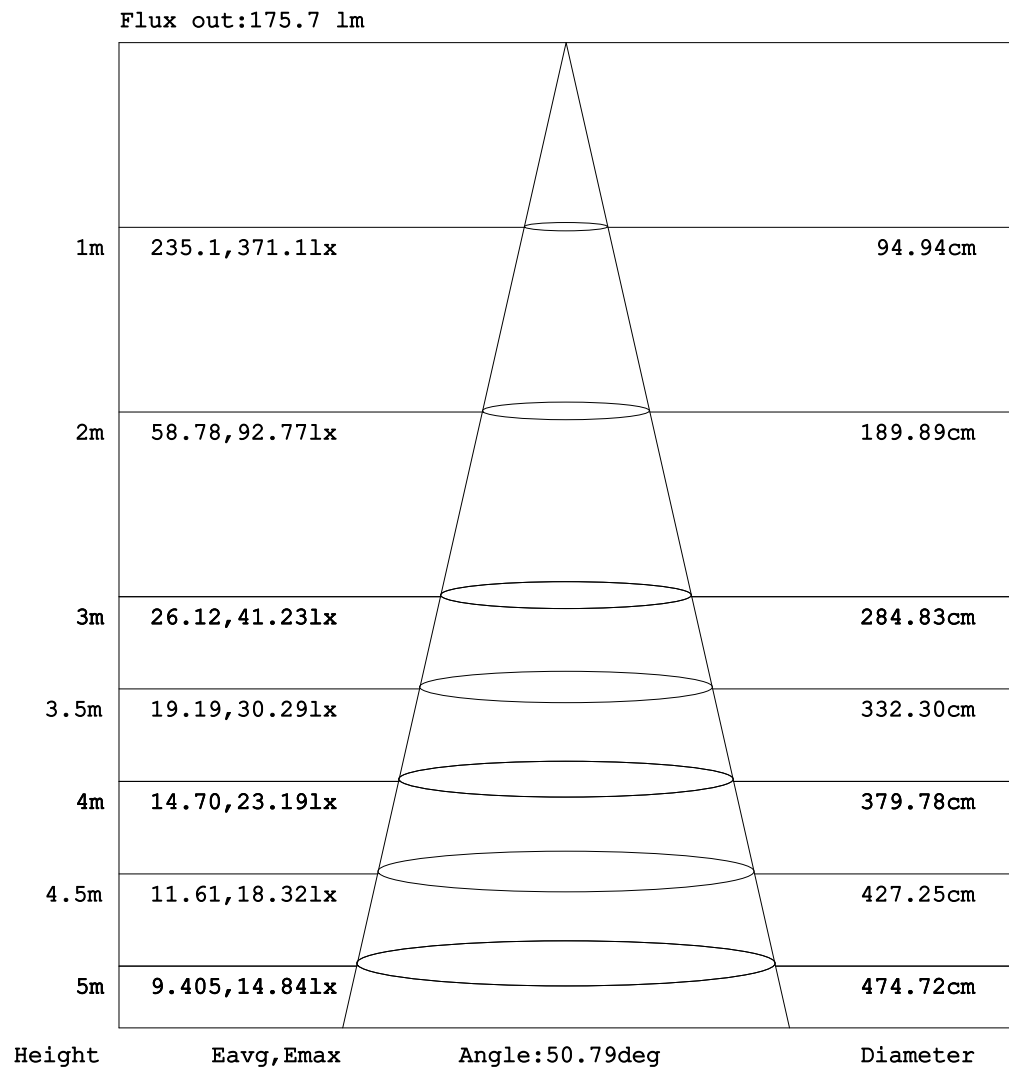
C Range: 0 - 360DEG  
C Interval: 30.0DEG  
Test Speed: HIGH  
Temperature: 25.3DEG  
Operators: WFW  
Test Date: 2023-05-24

$\gamma$  Range: 0 - 180DEG  
 $\gamma$  Interval: 1.0DEG  
Test System: EVERFINE GO-2000B\_V1 SYSTEM V2.0.269  
Humidity: 65.0%  
Test Distance: 9.200m [K=1.0000]  
Remarks:



## AAI Figure

Test:U:24.00V I:0.3939A P:9.432W PF:1.000 Freq:0Hz Lamp Flux:362.222x1 lm		
NAME: SFW20-24V-3535-24-2700K+6000K-90-2700K-38	TYPE: 硅胶	WEIGHT:
SPEC.:	DIM.: 18.5MM*18.5MM	SERIAL No.:202305005
MFR.: OLYMPIA	SUR.:1.0*0.0185	Shielding Angle:



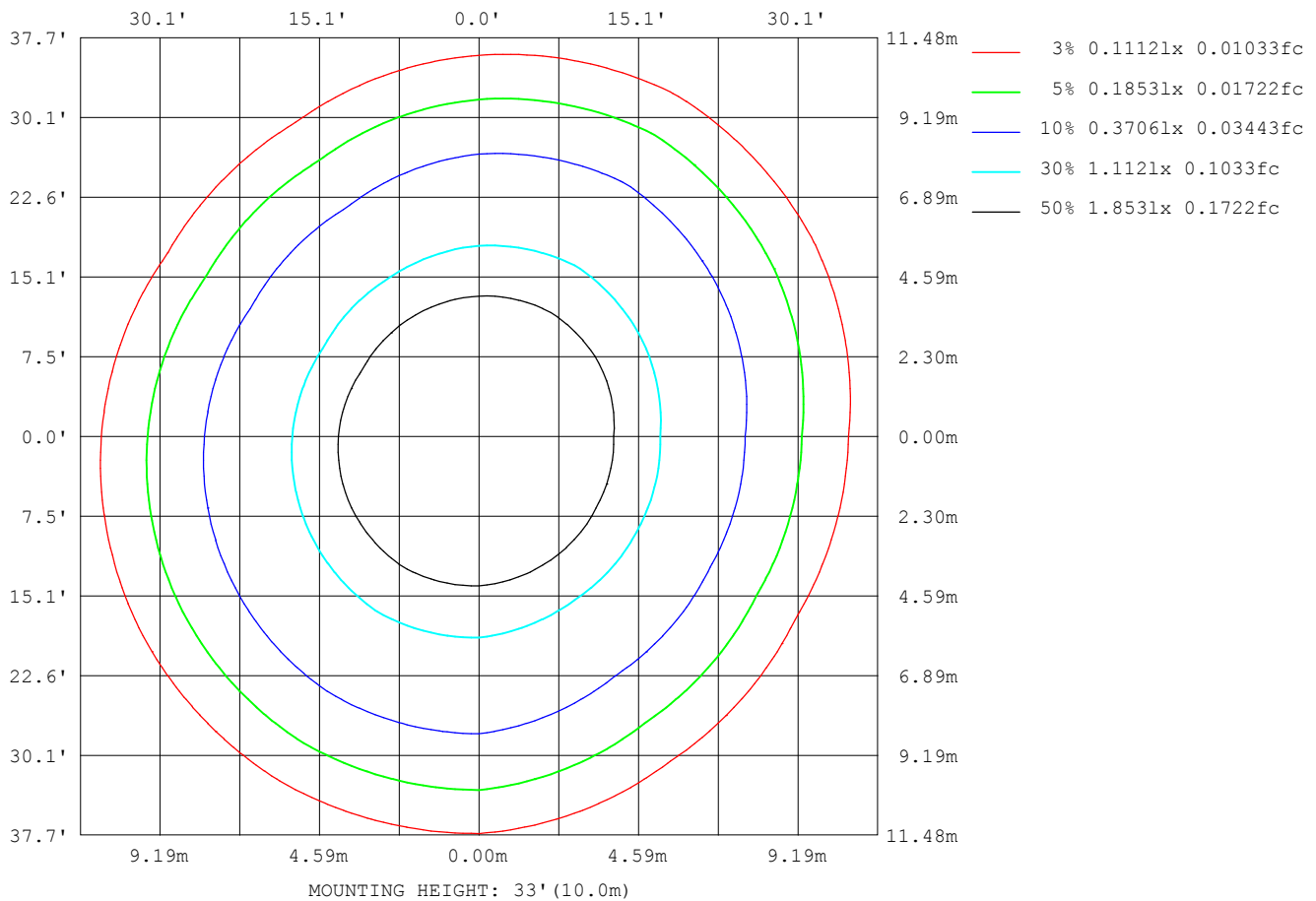
Note: The Curves indicate the illuminated area and the average illumination when the luminaire is at different distance.

C Range: 0 - 360DEG  
 C Interval: 30.0DEG  
 Test Speed: HIGH  
 Temperature: 25.3DEG  
 Operators: WFW  
 Test Date: 2023-05-24

$\gamma$  Range: 0 - 180DEG  
 $\gamma$  Interval: 1.0DEG  
 Test System: EVERFINE GO-2000B\_V1 SYSTEM V2.0.269  
 Humidity: 65.0%  
 Test Distance: 9.200m [K=1.0000]  
 Remarks:

## ISOLUX DIAGRAM

Test:U:24.00V I:0.3939A P:9.432W PF:1.000 Freq:0Hz Lamp Flux:362.222x1 lm		
NAME: SFW20-24V-3535-24-2700K+6000K-90-2700K-38	TYPE: 硅胶	WEIGHT:
SPEC.:	DIM.: 18.5MM*18.5MM	SERIAL No.:202305005
MFR.: OLYMPIA	SUR.:1.0*0.0185	Shielding Angle:



C Range: 0 - 360DEG  
C Interval: 30.0DEG  
Test Speed: HIGH  
Temperature:25.3DEG  
Operators:WFW  
Test Date:2023-05-24

$\gamma$  Range: 0 - 180DEG  
 $\gamma$  Interval: 1.0DEG  
Test System:EVERFINE GO-2000B\_V1 SYSTEM V2.0.269  
Humidity:65.0%  
Test Distance:9.200m [K=1.0000]  
Remarks:

## LED Avg.L Report

Test:U:24.00V I:0.3939A P:9.432W PF:1.000 Freq:0Hz Lamp Flux:362.222x1 lm		
NAME: SFW20-24V-3535-24-2700K+6000K-90-2700K-38	TYPE: 硅胶	WEIGHT:
SPEC.:	DIM.: 18.5MM*18.5MM	SERIAL No.:202305005
MFR.: OLYMPIA	SUR.:1.0*0.0185	Shielding Angle:

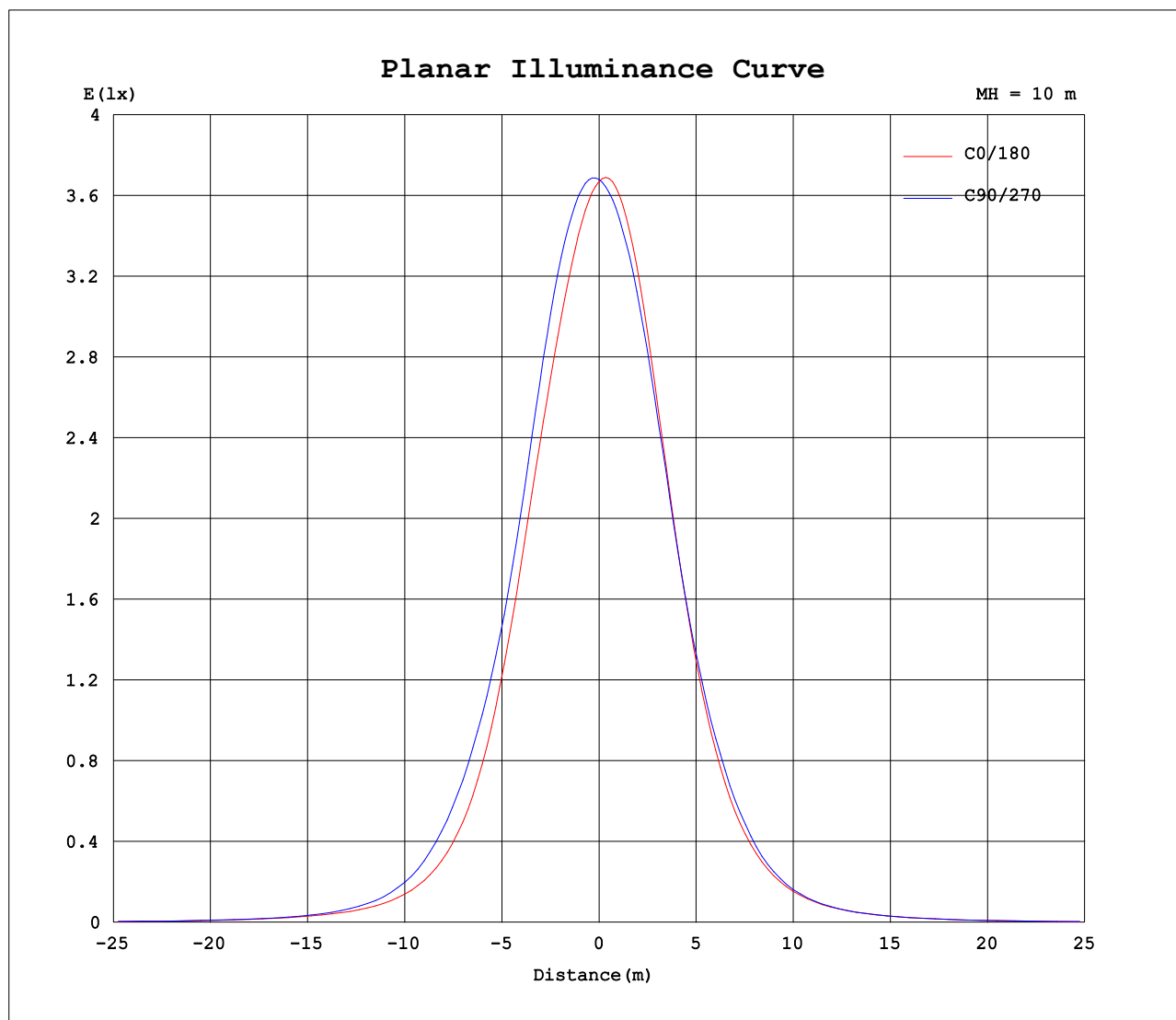
AvgL	cd/m2
L_0~180 (65) av	250
L_0~180 (75) av	206
L_0~180 (85) av	206
L_90~270 (65) av	259
L_90~270 (75) av	206
L_90~270 (85) av	186
L_45 (65) av	255
L_45 (75) av	204
L_45 (85) av	200

Standard: GB/T 29293-2012

C Range: 0 - 360DEG  
C Interval: 30.0DEG  
Test Speed: HIGH  
Temperature:25.3DEG  
Operators:WFW  
Test Date:2023-05-24

γ Range: 0 - 180DEG  
γ Interval: 1.0DEG  
Test System:EVERFINE GO-2000B\_V1 SYSTEM V2.0.269  
Humidity:65.0%  
Test Distance:9.200m [K=1.0000]  
Remarks:

## Planar Illuminance Curve



C Range: 0 - 360DEG  
C Interval: 30.0DEG  
Test Speed: HIGH  
Temperature: 25.3DEG  
Operators: WFW  
Test Date: 2023-05-24

$\gamma$  Range: 0 - 180DEG  
 $\gamma$  Interval: 1.0DEG  
Test System: EVERFINE GO-2000B\_V1 SYSTEM V2.0.269  
Humidity: 65.0%  
Test Distance: 9.200m [K=1.0000]  
Remarks:

## LUMINOUS DISTRIBUTION INTENSITY DATA

Test:U:24.00V I:0.3939A P:9.432W PF:1.000 Freq:0Hz Lamp Flux:362.222x1 lm		
NAME: SFW20-24V-3535-24-2700K+6000K-90-2700K-38	TYPE: 硅胶	WEIGHT:
SPEC.:	DIM.: 18.5MM*18.5MM	SERIAL No.:202305005
MFR.: OLYMPIA	SUR.:1.0*0.0185	Shielding Angle:

Table--1

UNIT: cd

C (DEG) γ (DEG)	0	30	60	90	120	150	180	210	240	270	300	330							
0	367	368	368	368	368	367	367	368	368	368	368	367							
5	351	352	358	368	374	373	368	360	357	358	359	357							
10	323	322	332	353	365	363	350	332	331	336	343	338							
15	287	285	301	322	332	326	311	292	293	301	310	303							
20	241	244	259	274	280	270	256	242	246	253	260	254							
25	187	193	205	221	225	212	199	185	190	201	209	201							
30	134	138	150	173	175	161	145	130	135	154	163	150							
35	91.0	91.2	103	129	129	115	100	86.8	89.6	110	122	107							
40	60.0	58.4	67.0	88.9	88.3	77.5	66.7	56.1	57.8	72.9	83.3	72.3							
45	39.8	38.0	43.5	56.5	56.4	50.5	43.7	36.8	37.6	46.2	53.4	48.1							
50	27.2	26.2	29.2	35.2	35.4	33.2	29.1	24.9	25.4	29.7	34.3	32.1							
55	19.6	18.9	20.4	23.0	23.3	22.5	20.0	17.6	17.9	20.2	23.0	22.3							
60	14.5	14.3	14.9	16.0	16.1	15.9	14.2	12.6	13.0	14.3	16.1	15.9							
65	11.0	10.8	11.0	11.6	11.4	11.4	10.1	9.17	9.42	10.3	11.6	11.4							
70	8.32	8.12	8.13	8.33	8.11	8.08	7.03	6.46	6.63	7.32	8.17	8.07							
75	6.08	5.93	5.80	5.83	5.58	5.57	4.56	4.20	4.30	4.85	5.45	5.49							
80	4.13	4.02	3.85	3.73	3.54	3.51	2.55	2.35	2.40	2.76	3.23	3.33							
85	2.49	2.43	2.28	2.10	2.06	2.02	1.09	1.05	1.00	1.14	1.48	1.59							
90	1.46	1.42	1.43	1.41	1.53	1.74	0.61	0.60	0.54	0.49	0.51	0.58							
95	1.31	1.32	1.38	1.44	1.53	1.64	0.67	0.61	0.61	0.53	0.56	0.47							
100	1.31	1.33	1.38	1.48	1.53	1.56	0.75	0.68	0.72	0.64	0.68	0.55							
105	1.32	1.36	1.39	1.52	1.54	1.57	0.87	0.81	0.84	0.79	0.82	0.70							
110	1.36	1.42	1.45	1.58	1.56	1.60	1.02	0.96	1.00	0.96	0.99	0.87							
115	1.46	1.51	1.52	1.66	1.64	1.68	1.19	1.14	1.19	1.16	1.19	1.07							
120	1.59	1.62	1.64	1.76	1.75	1.80	1.38	1.33	1.39	1.37	1.40	1.29							
125	1.78	1.79	1.81	1.93	1.90	1.94	1.58	1.55	1.60	1.57	1.61	1.51							
130	2.00	2.00	2.00	2.11	2.08	2.13	1.80	1.77	1.83	1.80	1.82	1.72							
135	2.25	2.25	2.22	2.31	2.28	2.34	2.01	1.99	2.06	2.01	2.04	1.95							
140	2.50	2.49	2.43	2.50	2.48	2.55	2.23	2.22	2.27	2.22	2.24	2.16							
145	2.73	2.73	2.64	2.70	2.68	2.76	2.42	2.41	2.47	2.40	2.42	2.37							
150	2.93	2.93	2.81	2.87	2.85	2.96	2.59	2.57	2.64	2.56	2.56	2.50							
155	3.09	3.08	2.96	3.02	3.02	3.11	2.71	2.71	2.79	2.71	2.71	2.62							
160	3.18	3.19	3.09	3.14	3.14	3.23	2.82	2.82	2.92	2.85	2.83	2.76							
165	3.25	3.26	3.17	3.24	3.22	3.30	2.93	2.92	3.04	3.00	2.98	2.85							
170	3.26	3.26	3.25	3.32	3.28	3.31	3.07	3.03	3.15	3.12	3.12	3.00							
175	3.27	3.27	3.29	3.34	3.34	3.31	3.18	3.16	3.27	3.25	3.26	3.14							
180	3.27	3.27	3.34	3.34	3.34	3.32	3.26	3.26	3.34	3.34	3.35	3.26							

C Range: 0 - 360DEG  
C Interval: 30.0DEG  
Test Speed: HIGH  
Temperature:25.3DEG  
Operators:WFW  
Test Date:2023-05-24

γ Range: 0 - 180DEG  
γ Interval: 1.0DEG  
Test System:EVERFINE GO-2000B\_V1 SYSTEM V2.0.269  
Humidity:65.0%  
Test Distance:9.200m [K=1.0000]  
Remarks:

## Photometric Data Table [cd]

G/C	0.0	30.0	60.0	90.0	120.0	150.0	180.0	210.0	240.0	270.0
0.0	367.0	367.6	367.9	368.0	367.9	367.3	367.0	367.6	367.9	368.0
3.0	358.9	360.8	364.2	369.3	372.6	372.1	369.9	366.0	364.0	362.9
6.0	346.4	346.9	353.6	365.8	373.7	373.0	366.1	355.9	353.0	354.3
9.0	329.6	328.4	338.1	357.1	368.8	366.9	354.9	339.6	336.9	342.0
12.0	309.6	307.3	320.3	342.7	355.2	351.2	336.5	317.7	317.4	323.7
15.0	287.1	285.1	300.6	322.1	332.4	326.1	311.0	292.5	293.3	301.3
18.0	261.3	262.4	277.3	295.4	302.2	293.8	278.9	263.6	266.3	273.8
21.0	231.0	235.2	248.9	262.9	268.4	257.2	244.8	230.1	235.4	242.4
24.0	198.2	204.5	216.4	231.8	235.3	223.6	210.5	195.9	201.7	211.5
27.0	165.6	171.3	183.0	200.7	204.6	191.8	176.1	161.7	167.3	181.9
30.0	134.2	138.1	150.1	172.8	175.5	160.5	144.9	130.1	135.0	153.7
33.0	106.6	109.0	120.4	146.5	147.3	133.0	117.0	102.3	106.6	127.8
36.0	83.79	83.50	94.60	120.5	120.8	107.1	92.59	79.68	82.24	102.6
39.0	65.14	63.97	73.17	96.27	95.79	84.07	72.46	61.23	63.20	79.89
42.0	50.81	49.25	56.26	74.33	74.13	65.75	56.33	47.15	48.53	61.19
45.0	39.77	38.02	43.51	56.47	56.36	50.53	43.71	36.76	37.60	46.17
48.0	31.57	30.16	34.02	42.31	42.53	39.00	34.11	28.99	29.49	35.22
51.0	25.38	24.41	27.06	32.21	32.46	30.56	26.96	23.16	23.61	27.30
54.0	20.84	20.14	21.85	24.85	25.25	24.29	21.57	18.89	19.15	21.71
57.0	17.35	16.91	17.95	19.81	19.95	19.49	17.42	15.42	15.69	17.54
60.0	14.54	14.28	14.86	15.99	16.09	15.86	14.24	12.61	13.00	14.31
63.0	12.30	12.05	12.41	13.09	13.04	12.96	11.57	10.40	10.74	11.79
66.0	10.43	10.19	10.40	10.83	10.67	10.58	9.396	8.514	8.789	9.695
69.0	8.821	8.620	8.660	8.901	8.706	8.679	7.593	6.899	7.141	7.890
72.0	7.384	7.168	7.143	7.257	7.033	6.986	5.985	5.463	5.638	6.302
75.0	6.081	5.932	5.800	5.826	5.584	5.565	4.564	4.195	4.303	4.849
78.0	4.869	4.741	4.578	4.500	4.292	4.269	3.318	3.049	3.122	3.542
81.0	3.778	3.671	3.502	3.359	3.190	3.158	2.218	2.053	2.077	2.390
84.0	2.783	2.711	2.552	2.375	2.290	2.264	1.334	1.249	1.229	1.415
87.0	1.978	1.928	1.817	1.602	1.706	1.803	0.7275	0.7150	0.6774	0.6902
90.0	1.459	1.421	1.428	1.407	1.528	1.742	0.6082	0.5955	0.5428	0.4880
93.0	1.307	1.312	1.374	1.427	1.525	1.680	0.6434	0.6017	0.5782	0.5026
96.0	1.309	1.319	1.378	1.447	1.527	1.619	0.6837	0.6080	0.6334	0.5526
99.0	1.311	1.327	1.383	1.468	1.530	1.558	0.7290	0.6781	0.6888	0.6179
102.0	1.314	1.337	1.387	1.493	1.532	1.564	0.8043	0.7285	0.7642	0.7033
105.0	1.316	1.362	1.392	1.523	1.535	1.573	0.8698	0.8139	0.8447	0.7889
108.0	1.332	1.387	1.412	1.558	1.538	1.588	0.9602	0.8893	0.9352	0.8892
111.0	1.382	1.432	1.457	1.593	1.563	1.618	1.041	0.9898	1.041	0.9948
114.0	1.437	1.483	1.508	1.634	1.618	1.664	1.146	1.100	1.151	1.110
117.0	1.507	1.543	1.563	1.694	1.678	1.724	1.262	1.211	1.272	1.231
120.0	1.593	1.624	1.643	1.764	1.749	1.799	1.377	1.331	1.393	1.367
123.0	1.703	1.719	1.744	1.855	1.834	1.880	1.498	1.467	1.528	1.492
126.0	1.819	1.830	1.844	1.960	1.935	1.970	1.619	1.583	1.644	1.618
129.0	1.954	1.965	1.960	2.066	2.040	2.091	1.755	1.723	1.785	1.749
132.0	2.105	2.101	2.085	2.187	2.151	2.202	1.885	1.869	1.920	1.879
135.0	2.246	2.247	2.216	2.307	2.276	2.337	2.011	1.995	2.056	2.015
138.0	2.397	2.393	2.347	2.428	2.402	2.463	2.151	2.126	2.192	2.136
141.0	2.547	2.538	2.472	2.543	2.517	2.594	2.272	2.256	2.317	2.256
144.0	2.683	2.679	2.603	2.664	2.643	2.719	2.388	2.367	2.433	2.372
147.0	2.824	2.815	2.718	2.769	2.764	2.845	2.488	2.477	2.543	2.472
150.0	2.935	2.930	2.814	2.870	2.854	2.955	2.588	2.573	2.644	2.558
153.0	3.025	3.031	2.915	2.960	2.955	3.051	2.659	2.658	2.739	2.648
156.0	3.106	3.111	3.000	3.046	3.035	3.141	2.739	2.734	2.820	2.739
159.0	3.166	3.156	3.060	3.116	3.106	3.207	2.800	2.799	2.900	2.824
162.0	3.206	3.217	3.116	3.187	3.171	3.262	2.860	2.859	2.970	2.905
165.0	3.251	3.257	3.171	3.242	3.216	3.302	2.925	2.925	3.036	3.000
168.0	3.262	3.259	3.216	3.297	3.262	3.306	3.011	2.990	3.111	3.075
171.0	3.263	3.262	3.252	3.325	3.292	3.309	3.081	3.065	3.182	3.156
174.0	3.265	3.264	3.277	3.334	3.337	3.313	3.151	3.126	3.247	3.216
177.0	3.267	3.267	3.317	3.342	3.337	3.317	3.232	3.191	3.317	3.277
180.0	3.267	3.267	3.337	3.342	3.337	3.317	3.262	3.257	3.342	3.337
G/C	300.0	330.0								
0.0	367.9	367.3								
3.0	363.0	361.0								
6.0	356.8	353.6								
9.0	347.3	342.7								
12.0	332.4	325.4								
15.0	310.1	303.1								
18.0	280.5	274.5								
21.0	249.5	243.0								
24.0	218.4	212.1								
27.0	189.7	179.7								
30.0	163.4	150.0								

C Range: 0 - 360DEG  
 C Interval: 30.0DEG  
 Test Speed: HIGH  
 Temperature: 25.3DEG  
 Operators: WFW  
 Test Date: 2023-05-24

γ Range: 0 - 180DEG  
 γ Interval: 1.0DEG  
 Test System: EVERFINE GO-2000B\_V1 SYSTEM V2.0.269  
 Humidity: 65.0%  
 Test Distance: 9.200m [K=1.0000]  
 Remarks:

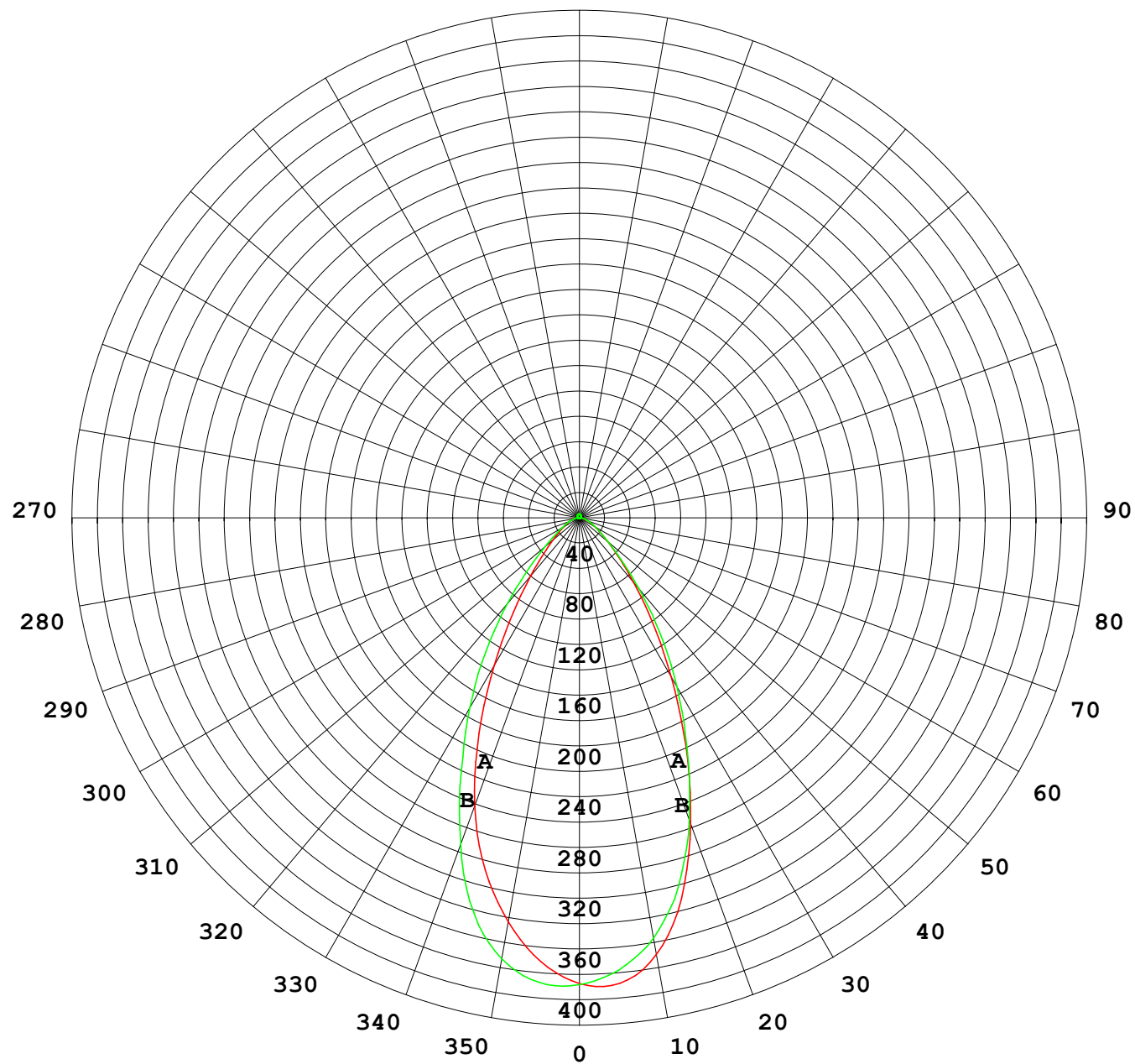
## Photometric Data Table [cd]

33.0	138.1	123.4
36.0	113.5	99.00
39.0	90.35	78.47
42.0	69.94	61.71
45.0	53.36	48.06
48.0	40.73	37.65
51.0	31.50	29.76
54.0	24.80	23.95
57.0	19.80	19.42
60.0	16.13	15.87
63.0	13.23	13.06
66.0	10.79	10.67
69.0	8.803	8.665
72.0	7.000	7.056
75.0	5.453	5.493
78.0	4.076	4.180
81.0	2.845	2.958
84.0	1.780	1.908
87.0	0.9730	1.088
90.0	0.5124	0.5842
93.0	0.5178	0.4656
96.0	0.5732	0.4743
99.0	0.6536	0.5175
102.0	0.7340	0.6030
105.0	0.8246	0.6983
108.0	0.9251	0.7987
111.0	1.026	0.9143
114.0	1.141	1.030
117.0	1.267	1.150
120.0	1.398	1.286
123.0	1.528	1.417
126.0	1.649	1.548
129.0	1.785	1.683
132.0	1.915	1.824
135.0	2.041	1.955
138.0	2.161	2.080
141.0	2.277	2.196
144.0	2.383	2.307
147.0	2.478	2.407
150.0	2.563	2.503
153.0	2.654	2.578
156.0	2.729	2.648
159.0	2.815	2.719
162.0	2.890	2.784
165.0	2.976	2.855
168.0	3.061	2.940
171.0	3.151	3.015
174.0	3.232	3.106
177.0	3.312	3.191
180.0	3.347	3.262

C Range: 0 - 360DEG  
C Interval: 30.0DEG  
Test Speed: HIGH  
Temperature: 25.3DEG  
Operators: WFW  
Test Date: 2023-05-24

γ Range: 0 - 180DEG  
γ Interval: 1.0DEG  
Test System: EVERFINE GO-2000B\_V1 SYSTEM V2.0.269  
Humidity: 65.0%  
Test Distance: 9.200m [K=1.0000]  
Remarks:

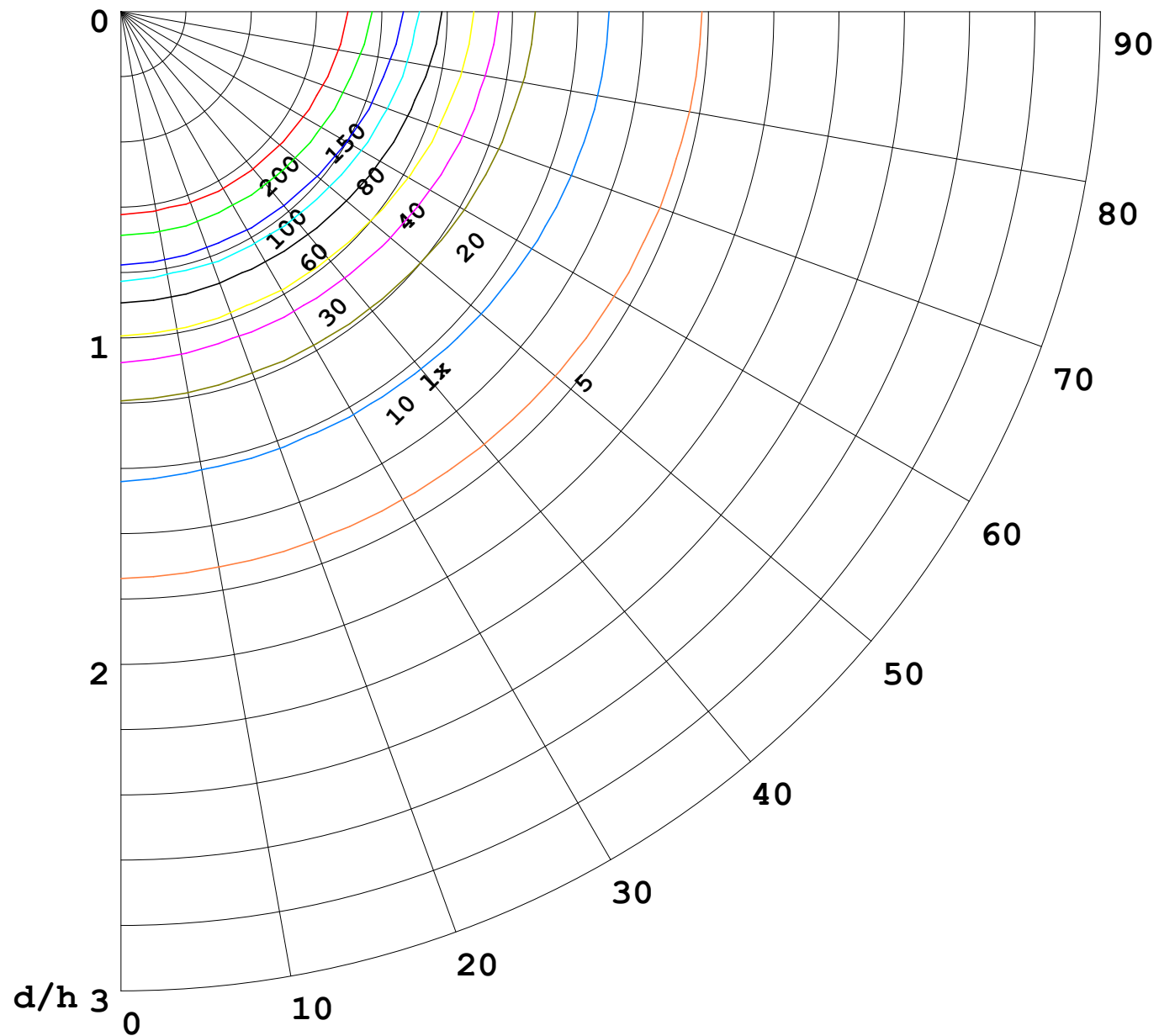
I (cd)





1000 lm

$\kappa = 1$



F = 5000 lm  
 K = 0.7  
 Hcc = 0.0 m  
 Hfc = 0.0 m  
 Eave = 100 lx

	Pcc	Pw	Pfc
—	70	50	30
—	50	30	20

