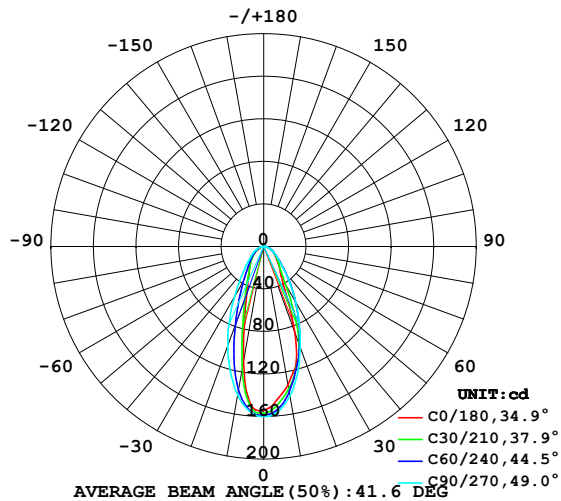


LUMINAIRE PHOTOMETRIC TEST REPORT

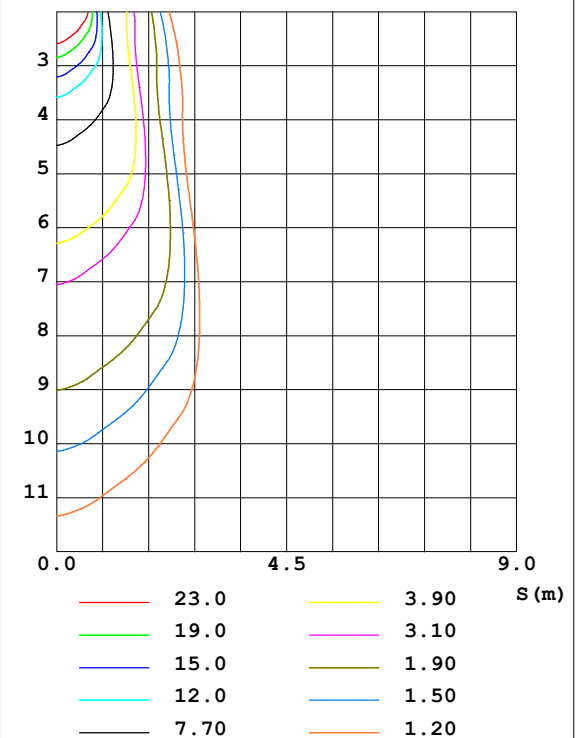
Test:U:24.00V I:0.2310A P:5.540W PF:1.000 Lamp Flux:136.263x1 lm		
NAME: SFW20-24V-3535-24-RGB-2040-R	TYPE: 硅胶	WEIGHT:
DIM.: 18.5MM*18.5MM	SPEC.:	SERIAL No.: 202403007
MFR.: OLYMPIA	SUR.: 1.0*0.0185	PROTECTION ANGLE:

DATA OF LAMP		PHOTOMETRIC DATA				Eff: 24.60 lm/W
MODEL	3535	I _{max} (cd)	161.8	S/MH (C0/180)	0.66	
NOMINAL POWER (W)	18	LOR (%)	100.0	S/MH (C90/270)	0.76	
RATED VOLTAGE (V)	24	TOTAL FLUX (lm)	136.26	η UP, DN (C0-180)	1.6, 50.2	
NOMINAL FLUX (lm)	136.263	CIE CLASS	DIRECT	η UP, DN (C180-360)	1.3, 46.9	
LAMPS INSIDE	1	η up (%)	2.9	CIBSE SHR NOM	0.50	
TEST VOLTAGE (V)	24	η down (%)	97.1	CIBSE SHR MAX	0.70	

LUMINOUS INTENSITY DISTRIBUTION DIAGRAM



C0 PLANE ISOLUX DIAGRAM (UNIT: lx)



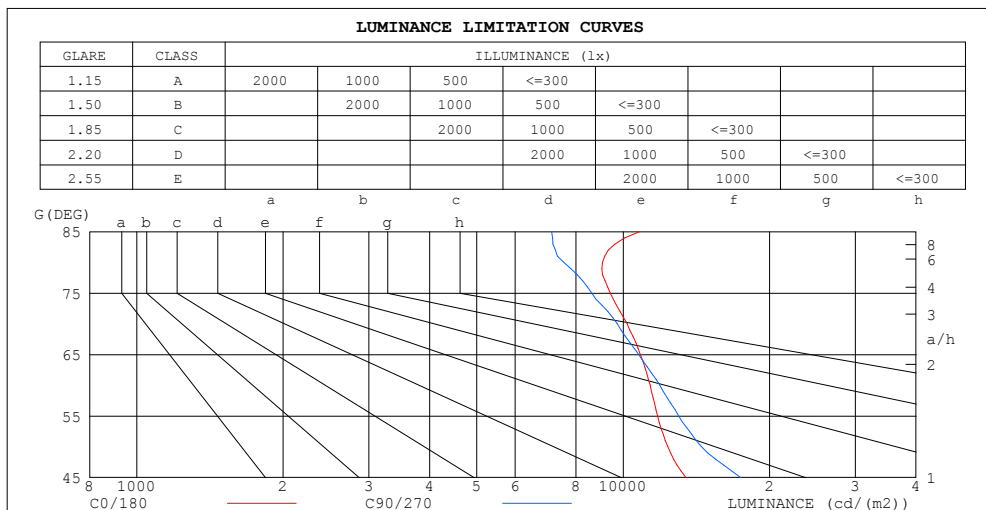
C Range: 0 - 360DEG
C Interval: 30.0DEG
Test Speed: HIGH
Temperature: 25.3DEG
Operators:
Test Date: 2024-03-30

γ Range: 0 - 180DEG
γ Interval: 1.0DEG
Test System: EVERFINE GO-2000B_V1 SYSTEM V2.0.269
Humidity: 65.0%
Test Distance: 9.200m [K=1.0000]
Remarks:

ZONAL FLUX DIAGRAM
AND LUMINANCE LIMITATION CURVES

ZONAL FLUX DIAGRAM:

γ	C0	C45	C90	C135	C180	C225	C270	C315	γ	Φ zone	Φ total	%lum, lamp
10	132.1	137.2	142.9	128.8	110.0	126.8	141.9	140.2	0- 10	13.91	13.91	10.2,10.2
20	85.53	98.34	100.8	71.32	47.26	64.92	98.74	102.1	10- 20	29.84	43.75	32.1,32.1
30	33.82	50.45	60.49	39.77	27.66	33.34	55.08	53.38	20- 30	28.27	72.03	52.9,52.9
40	21.67	27.60	31.68	23.98	19.78	20.20	28.51	28.54	30- 40	20.85	92.88	68.2,68.2
50	14.70	16.73	17.21	15.23	13.37	13.42	16.43	17.36	40- 50	15.29	108.2	79.4,79.4
60	10.51	10.76	11.00	9.366	8.041	8.530	10.57	11.50	50- 60	11.31	119.5	87.7,87.7
70	6.447	6.536	6.148	4.715	3.715	4.203	5.818	6.666	60- 70	7.631	127.1	93.3,93.3
80	2.913	2.908	2.425	1.755	1.280	1.379	2.068	2.716	70- 80	3.944	131.0	96.2,96.2
90	0.9112	0.7892	0.5177	0.5453	0.2412	0.2488	0.2012	0.4951	80- 90	1.277	132.3	97.1,97.1
100	0.5026	0.5177	0.5579	0.5428	0.2765	0.2739	0.2360	0.2413	90-100	0.4405	132.8	97.4,97.4
110	0.5026	0.5252	0.5932	0.5629	0.3670	0.3819	0.3517	0.3217	100-110	0.4425	133.2	97.8,97.8
120	0.5175	0.5679	0.6685	0.6483	0.5078	0.5101	0.4723	0.4422	110-120	0.4873	133.7	98.1,98.1
130	0.6130	0.6785	0.7891	0.7815	0.6687	0.6710	0.6280	0.6005	120-130	0.5449	134.2	98.5,98.5
140	0.7738	0.8267	0.9098	0.9472	0.8394	0.8142	0.7688	0.7589	130-140	0.5840	134.8	98.9,98.9
150	0.9647	0.9825	1.030	1.078	0.9399	0.9374	0.8794	0.8845	140-150	0.5653	135.4	99.4,99.4
160	1.096	1.086	1.116	1.131	1.000	1.020	0.9849	0.9700	150-160	0.4678	135.9	99.7,99.7
170	1.126	1.108	1.131	1.126	1.040	1.068	1.070	1.040	160-170	0.3030	136.2	99.9,99.9
180	1.126	1.126	1.126	1.136	1.106	1.111	1.141	1.118	170-180	0.1051	136.3	100,100
DEG	LUMINOUS INTENSITY:cd									UNIT:lm		



LUMINANCE cd/(m2)		
G (DEG)	C0/180	C90/270
85	10831	7124
80	9067	7548
75	9403	8612
70	10189	9716
65	10850	10762
60	11360	11888
55	11764	12997
50	12359	14473
45	13464	17453

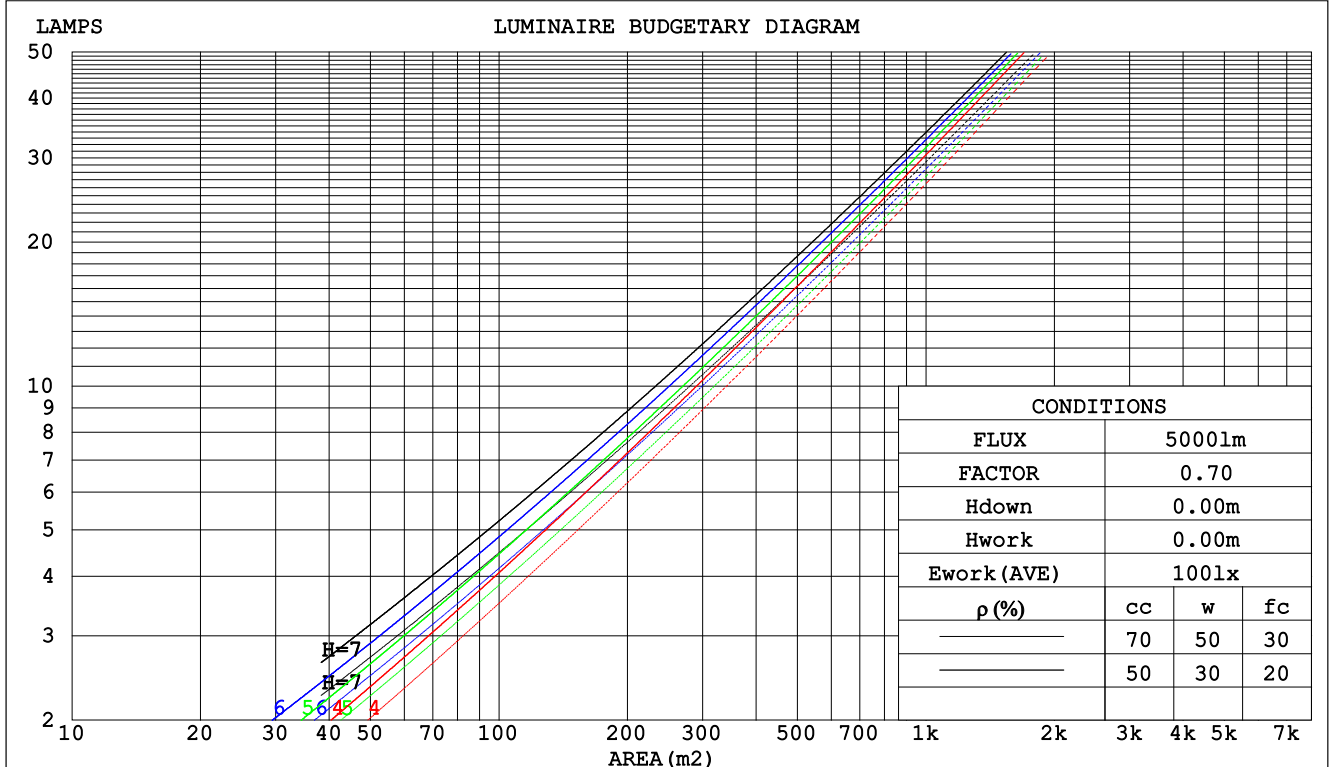
C Range: 0 - 360DEG
C Interval: 30.0DEG
Test Speed: HIGH
Temperature:25.3DEG
Operators:
Test Date:2024-03-30

γ Range: 0 - 180DEG
 γ Interval: 1.0DEG
Test System:EVERFINE GO-2000B_V1 SYSTEM V2.0.269
Humidity:65.0%
Test Distance:9.200m [K=1.0000]
Remarks:

CU AND LUMINAIRE BUDGETARY ESTIMATE DIAGRAM

Test:U:24.00V I:0.2310A P:5.540W PF:1.000 Lamp Flux:136.263x1 lm		
NAME: SFW20-24V-3535-24-RGB-2040-R	TYPE: 硅胶	WEIGHT:
DIM.: 18.5MM*18.5MM	SPEC.:	SERIAL No.:202403007
MFR.: OLYMPIA	SUR.:1.0*0.0185	PROTECTION ANGLE:

pcc	80%			70%			50%			30%			10%			0
pw	50%	30%	10%	50%	30%	10%	50%	30%	10%	50%	30%	10%	50%	30%	10%	0
pfc	20%			20%			20%			20%			20%			0
RCR	RCR:Room Cavity Ratio						Coefficients of Utilization(CU)									
0.0	1.18	1.18	1.18	1.15	1.15	1.15	1.10	1.10	1.10	1.04	1.04	1.04	.99	.99	.99	.97
1.0	1.07	1.04	1.01	1.05	1.02	.99	1.00	.98	.95	.96	.94	.92	.92	.90	.89	.87
2.0	.97	.92	.88	.95	.90	.86	.91	.87	.84	.88	.85	.82	.84	.82	.80	.78
3.0	.89	.82	.77	.87	.81	.76	.84	.79	.75	.81	.77	.73	.78	.75	.72	.70
4.0	.81	.74	.69	.80	.74	.69	.77	.72	.67	.75	.70	.66	.72	.68	.65	.63
5.0	.75	.68	.63	.74	.67	.62	.72	.66	.61	.69	.64	.61	.68	.63	.60	.58
6.0	.70	.62	.57	.69	.62	.57	.67	.61	.56	.65	.60	.56	.63	.59	.55	.53
7.0	.65	.58	.53	.64	.57	.53	.62	.56	.52	.61	.56	.52	.59	.55	.51	.49
8.0	.61	.54	.49	.60	.53	.49	.59	.53	.48	.57	.52	.48	.56	.51	.48	.46
9.0	.57	.50	.46	.56	.50	.46	.55	.49	.45	.54	.49	.45	.53	.48	.45	.43
10.0	.54	.47	.43	.53	.47	.43	.52	.46	.42	.51	.46	.42	.50	.45	.42	.40



C Range: 0 - 360DEG
C Interval: 30.0DEG
Test Speed: HIGH
Temperature:25.3DEG
Operators:
Test Date:2024-03-30

γ Range: 0 - 180DEG
γ Interval: 1.0DEG
Test System:EVERFINE GO-2000B_V1 SYSTEM V2.0.269
Humidity:65.0%
Test Distance:9.200m [K=1.0000]
Remarks:

WEC AND CCEC

Test:U:24.00V I:0.2310A P:5.540W PF:1.000 Lamp Flux:136.263x1 lm		
NAME: SFW20-24V-3535-24-RGB-2040-R	TYPE: 硅胶	WEIGHT:
DIM.: 18.5MM*18.5MM	SPEC.:	SERIAL No.:202403007
MFR.: OLYMPIA	SUR.:1.0*0.0185	PROTECTION ANGLE:

pcc	80%			70%			50%			30%			10%			0	
pw	50%	30%	10%	50%	30%	10%	50%	30%	10%	50%	30%	10%	50%	30%	10%	0	
pfc	20%			20%			20%			20%			20%			0	
RCR	RCR:Room Cavity Ratio						Wall Exitance Coefficients(WEC)										
0.0																	
1.0	.234	.133	.042	.226	.129	.041	.211	.121	.039	.198	.114	.037	.186	.108	.035		
2.0	.221	.121	.037	.214	.118	.036	.201	.112	.035	.190	.106	.033	.179	.101	.032		
3.0	.206	.110	.033	.201	.107	.032	.190	.103	.031	.179	.098	.030	.170	.094	.029		
4.0	.193	.100	.029	.188	.098	.029	.178	.094	.028	.169	.091	.027	.161	.087	.027		
5.0	.180	.092	.027	.176	.090	.026	.167	.087	.026	.159	.084	.025	.152	.081	.024		
6.0	.169	.085	.024	.165	.083	.024	.157	.081	.023	.150	.078	.023	.144	.076	.022		
7.0	.159	.079	.022	.156	.077	.022	.149	.075	.022	.142	.073	.021	.136	.071	.021		
8.0	.150	.073	.021	.147	.072	.020	.141	.070	.020	.135	.068	.020	.129	.066	.019		
9.0	.142	.069	.019	.139	.068	.019	.133	.066	.019	.128	.064	.018	.123	.063	.018		
10.0	.135	.065	.018	.132	.064	.018	.127	.062	.018	.122	.061	.017	.118	.059	.017		

pcc	80%			70%			50%			30%			10%			0
pw	50%	30%	10%	50%	30%	10%	50%	30%	10%	50%	30%	10%	50%	30%	10%	0
pfc	20%			20%			20%			20%			20%			0
RCR	RCR:Room Cavity Ratio						Ceiling Cavity Exitance Coefficients(CCEC)									
0.0	.213	.213	.213	.182	.182	.182	.124	.124	.124	.071	.071	.071	.023	.023	.023	
1.0	.197	.179	.163	.169	.154	.140	.115	.106	.097	.066	.061	.056	.021	.020	.018	
2.0	.185	.155	.129	.159	.133	.111	.109	.092	.078	.063	.054	.046	.020	.017	.015	
3.0	.175	.136	.106	.150	.118	.092	.103	.082	.064	.059	.048	.038	.019	.015	.012	
4.0	.166	.122	.089	.142	.106	.078	.098	.074	.055	.057	.043	.032	.018	.014	.011	
5.0	.157	.111	.077	.135	.096	.067	.093	.067	.047	.054	.039	.028	.017	.013	.009	
6.0	.150	.102	.068	.129	.089	.059	.089	.062	.042	.052	.037	.025	.017	.012	.008	
7.0	.143	.095	.061	.123	.082	.054	.085	.058	.038	.049	.034	.023	.016	.011	.007	
8.0	.137	.089	.056	.118	.077	.049	.082	.054	.035	.048	.032	.021	.015	.010	.007	
9.0	.132	.084	.052	.113	.073	.045	.079	.051	.032	.046	.030	.019	.015	.010	.006	
10.0	.126	.080	.048	.109	.069	.042	.076	.049	.030	.044	.029	.018	.014	.009	.006	

C Range: 0 - 360DEG
 C Interval: 30.0DEG
 Test Speed: HIGH
 Temperature:25.3DEG
 Operators:
 Test Date:2024-03-30

γ Range: 0 - 180DEG
 γ Interval: 1.0DEG
 Test System:EVERFINE GO-2000B_V1 SYSTEM V2.0.269
 Humidity:65.0%
 Test Distance:9.200m [K=1.0000]
 Remarks:

Uncorrected UGR Table

Test:U:24.00V I:0.2310A P:5.540W PF:1.000 Lamp Flux:136.263x1 lm											
NAME: SFW20-24V-3535-24-RGB-2040-R						TYPE:硅胶		WEIGHT:			
DIM.: 18.5MM*18.5MM						SPEC.:		SERIAL No.:202403007			
MFR.: OLYMPIA						SUR.:1.0*0.0185		PROTECTION ANGLE:			
ceiling/cavity	0.7	0.7	0.5	0.5	0.3	0.7	0.7	0.5	0.5	0.3	
walls	0.5	0.3	0.5	0.3	0.3	0.5	0.3	0.5	0.3	0.3	
working plane	0.2	0.2	0.2	0.2	0.2	0.2	0.2	0.2	0.2	0.2	
Room dimensions	Viewed crosswise					Viewed endwise					
x = 2H y = 2H	19.5	20.7	19.8	20.9	21.1	20.5	21.6	20.8	21.8	22.1	
	3H	20.9	21.9	21.2	22.2	22.5	21.5	22.5	21.8	22.8	23.0
	4H	21.4	22.4	21.7	22.7	23.0	21.8	22.8	22.2	23.1	23.4
	6H	21.8	22.8	22.2	23.1	23.4	22.1	23.1	22.5	23.4	23.7
	8H	22.0	22.9	22.4	23.2	23.6	22.2	23.1	22.6	23.4	23.8
	12H	22.2	23.0	22.5	23.4	23.7	22.3	23.1	22.6	23.5	23.8
4H	2H	20.1	21.1	20.4	21.4	21.7	20.8	21.8	21.2	22.1	22.4
	3H	21.6	22.5	22.0	22.8	23.2	22.0	22.9	22.4	23.2	23.6
	4H	22.3	23.1	22.7	23.4	23.8	22.6	23.4	23.0	23.7	24.1
	6H	22.8	23.5	23.3	23.9	24.3	23.0	23.7	23.4	24.1	24.5
	8H	23.1	23.7	23.5	24.1	24.6	23.1	23.8	23.6	24.2	24.6
	12H	23.3	23.9	23.8	24.3	24.8	23.2	23.8	23.7	24.2	24.7
8H	4H	22.5	23.2	23.0	23.6	24.0	22.8	23.4	23.2	23.8	24.3
	6H	23.2	23.8	23.7	24.2	24.7	23.3	23.9	23.8	24.3	24.8
	8H	23.6	24.0	24.1	24.5	25.0	23.5	24.0	24.0	24.5	25.0
	12H	23.9	24.3	24.4	24.8	25.4	23.7	24.1	24.3	24.6	25.2
12H	4H	22.5	23.1	23.0	23.6	24.0	22.8	23.4	23.2	23.8	24.3
	6H	23.3	23.8	23.8	24.2	24.7	23.4	23.9	23.9	24.3	24.8
	8H	23.7	24.1	24.2	24.6	25.1	23.7	24.1	24.2	24.6	25.1
Variations with the observer position at spacings:											
S = 1.0H	+ 0.2 / - 0.3					+ 0.4 / - 0.5					
1.5H	+ 0.1 / - 0.2					+ 0.4 / - 0.3					
2.0H	+ 0.2 / - 0.3					+ 0.5 / - 0.4					

CIE Pub.117 Corrected 136.3 lm Total Lamp Luminous Flux. (8log(F/F0) = -6.9)

C Range: 0 - 360DEG
 C Interval: 30.0DEG
 Test Speed: HIGH
 Temperature: 25.3DEG
 Operators:
 Test Date: 2024-03-30

γ Range: 0 - 180DEG
 γ Interval: 1.0DEG
 Test System: EVERFINE GO-2000B_V1 SYSTEM V2.0.269
 Humidity: 65.0%
 Test Distance: 9.200m [K=1.0000]
 Remarks:

UTILIZATION FACTORS TABLE

Test:U:24.00V I:0.2310A P:5.540W PF:1.000 Lamp Flux:136.263x1 lm		
NAME: SFW20-24V-3535-24-RGB-2040-R	TYPE: 硅胶	WEIGHT:
DIM.: 18.5MM*18.5MM	SPEC.:	SERIAL No.:202403007
MFR.: OLYMPIA	SUR.:1.0*0.0185	PROTECTION ANGLE:

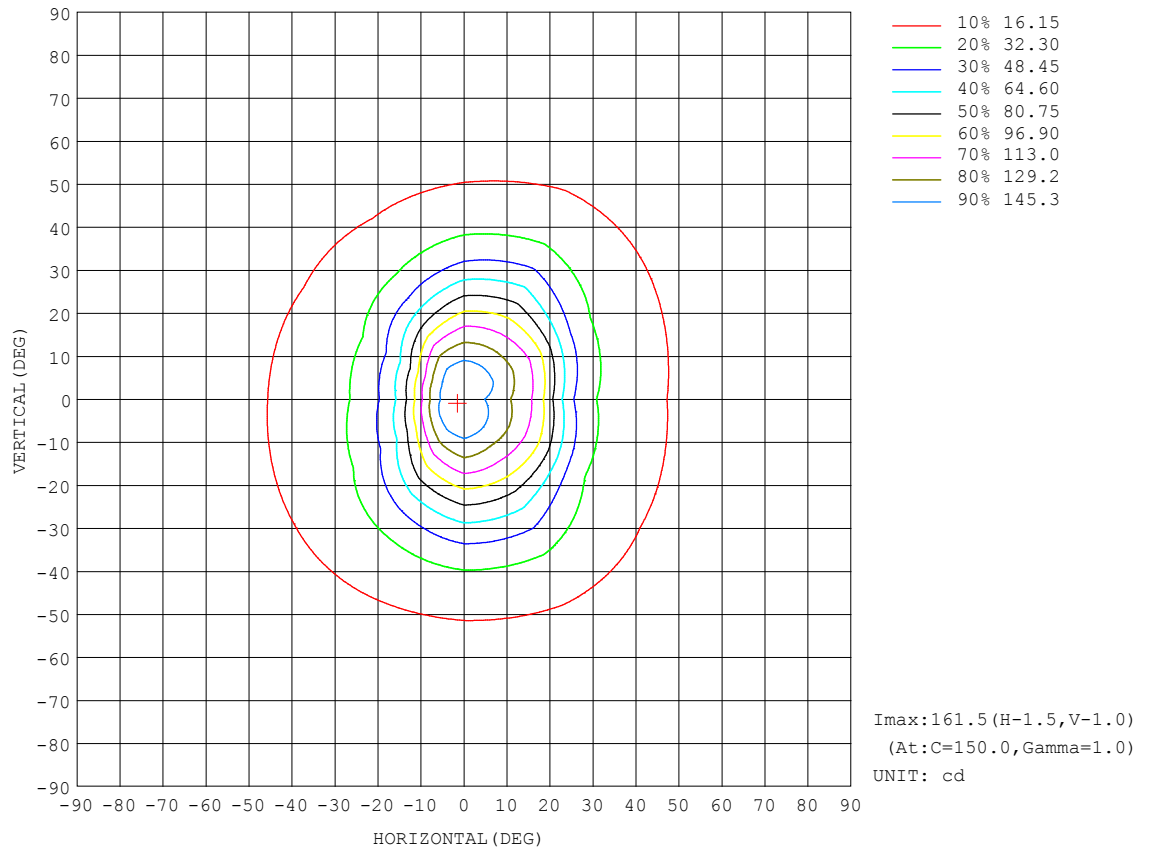
REFLECTANCE										
Ceiling	0.8	0.8	0.8	0.7	0.7	0.7	0.5	0.5	0.5	0
Walls	0.7	0.5	0.3	0.7	0.5	0.3	0.7	0.5	0.3	0
Working plane	0.2	0.2	0.2	0.2	0.2	0.2	0.2	0.2	0.2	0
ROOM INDEX	UTILIZATION FACTORS (PERCENT) $k(RI) \times RCR = 5$									
$k = 0.60$	72	63	58	71	63	57	70	62	57	52
0.80	81	72	66	80	71	66	78	71	66	60
1.00	87	79	73	86	78	73	84	78	72	67
1.25	93	85	80	91	84	79	89	83	78	72
1.50	96	89	84	95	88	83	92	86	82	76
2.00	101	95	90	99	94	89	96	91	87	80
2.50	104	98	94	102	97	93	98	94	90	83
3.00	106	101	97	104	100	96	100	96	93	85
4.00	109	105	102	107	103	100	103	100	97	88
5.00	111	108	105	109	105	103	104	101	99	90
ROOM INDEX	UF(total)									Direct
According to DIN EN 13032-2 2004			Suspended					SHRNOM = 1.25		

C Range: 0 - 360DEG
 C Interval: 30.0DEG
 Test Speed: HIGH
 Temperature:25.3DEG
 Operators:
 Test Date:2024-03-30

γ Range: 0 - 180DEG
 γ Interval: 1.0DEG
 Test System:EVERFINE GO-2000B_V1 SYSTEM V2.0.269
 Humidity:65.0%
 Test Distance:9.200m [K=1.0000]
 Remarks:

ISOCANDELA DIAGRAM

Test:U:24.00V I:0.2310A P:5.540W PF:1.000 Lamp Flux:136.263x1 lm		
NAME: SFW20-24V-3535-24-RGB-2040-R	TYPE: 硅胶	WEIGHT:
DIM.: 18.5MM*18.5MM	SPEC.:	SERIAL No.:202403007
MFR.: OLYMPIA	SUR.:1.0*0.0185	PROTECTION ANGLE:

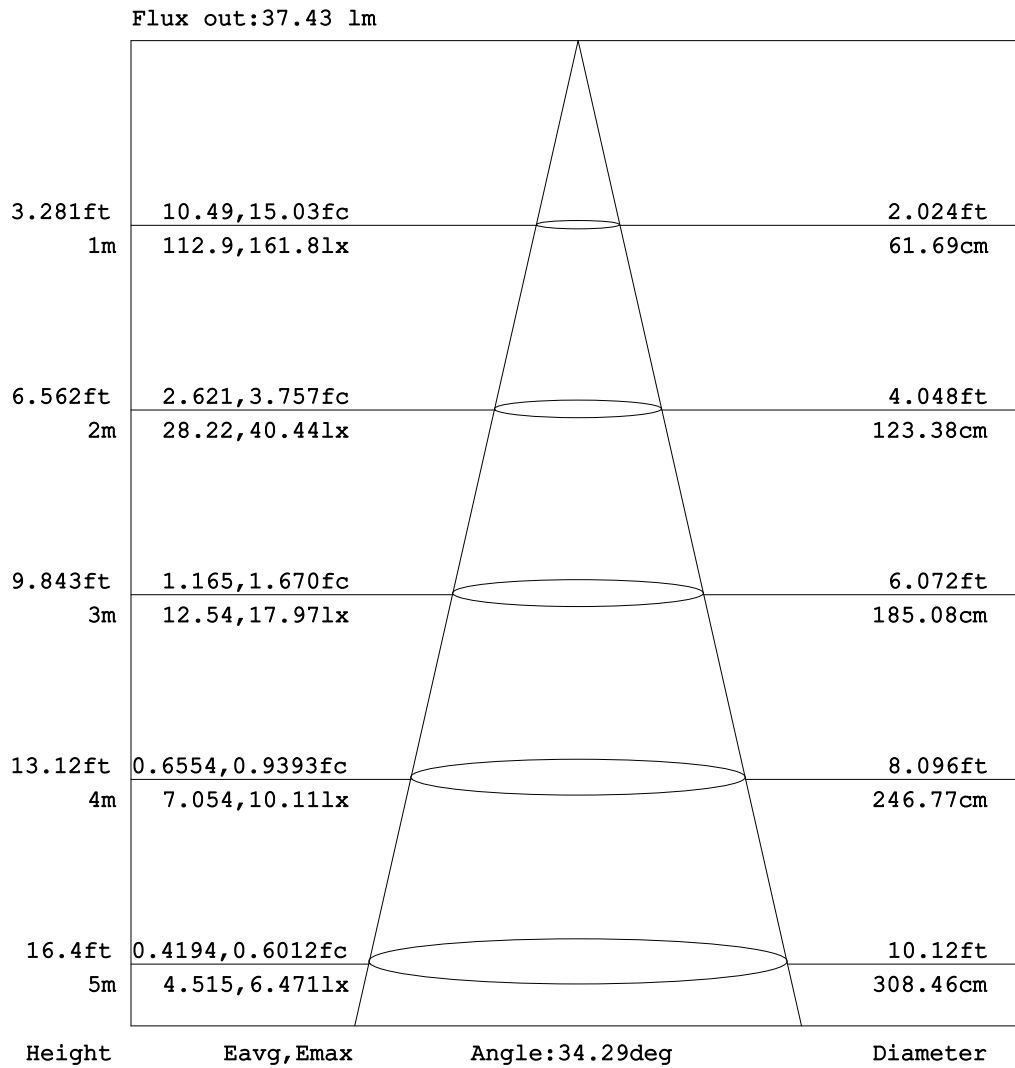


C Range: 0 - 360DEG
C Interval: 30.0DEG
Test Speed: HIGH
Temperature:25.3DEG
Operators:
Test Date:2024-03-30

γ Range: 0 - 180DEG
 γ Interval: 1.0DEG
Test System:EVERFINE GO-2000B_V1 SYSTEM V2.0.269
Humidity:65.0%
Test Distance:9.200m [K=1.0000]
Remarks:

AAI Figure

Test:U:24.00V I:0.2310A P:5.540W PF:1.000 Lamp Flux:136.263x1 lm		
NAME: SFW20-24V-3535-24-RGB-2040-R	TYPE: 硅胶	WEIGHT:
DIM.: 18.5MM*18.5MM	SPEC.:	SERIAL No.:202403007
MFR.: OLYMPIA	SUR.:1.0*0.0185	PROTECTION ANGLE:



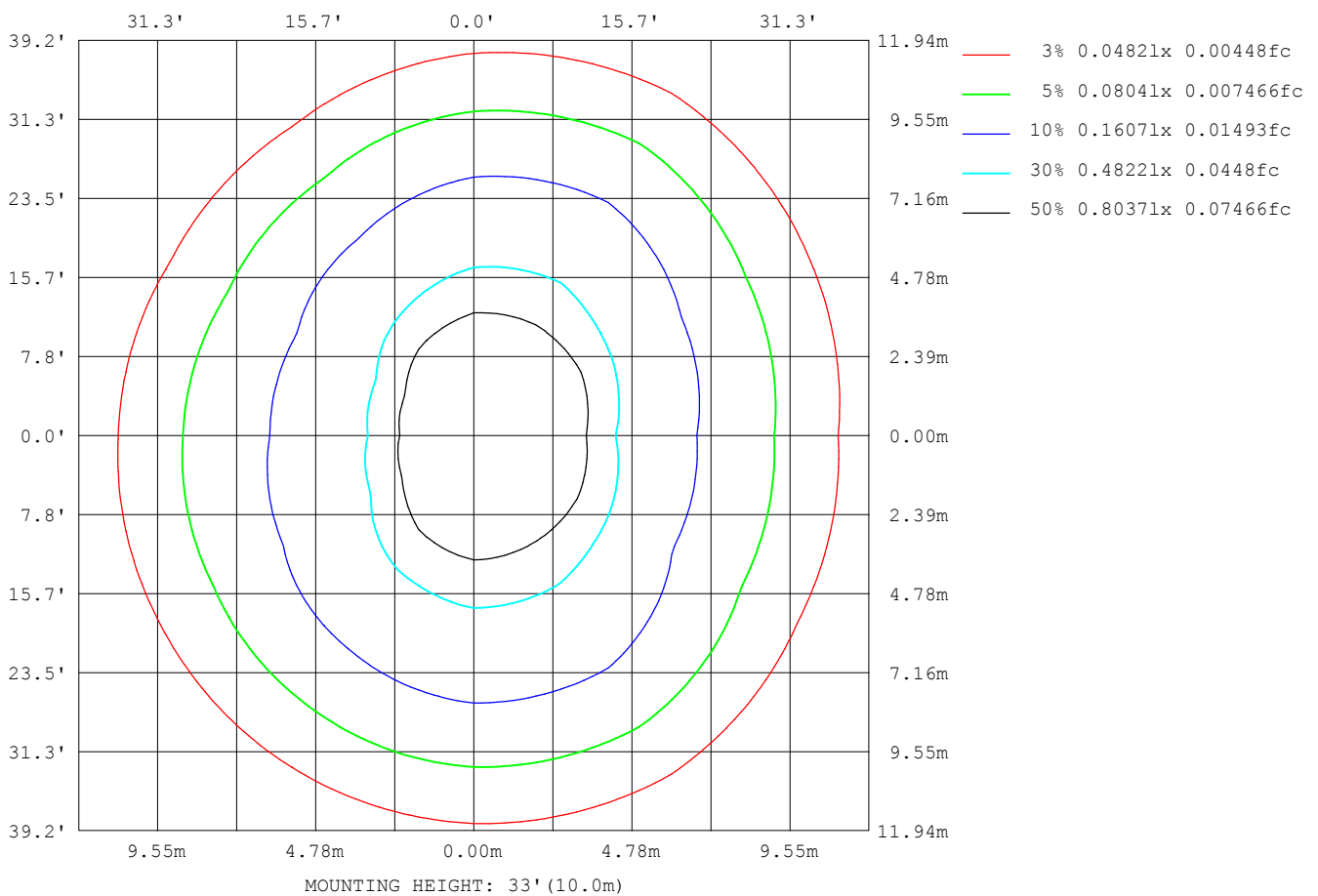
Note: The Curves indicate the illuminated area and the average illumination when the luminaire is at different distance.

C Range: 0 - 360DEG
C Interval: 30.0DEG
Test Speed: HIGH
Temperature: 25.3DEG
Operators:
Test Date: 2024-03-30

γ Range: 0 - 180DEG
γ Interval: 1.0DEG
Test System: EVERFINE GO-2000B_V1 SYSTEM V2.0.269
Humidity: 65.0%
Test Distance: 9.200m [K=1.0000]
Remarks:

ISOLUX DIAGRAM

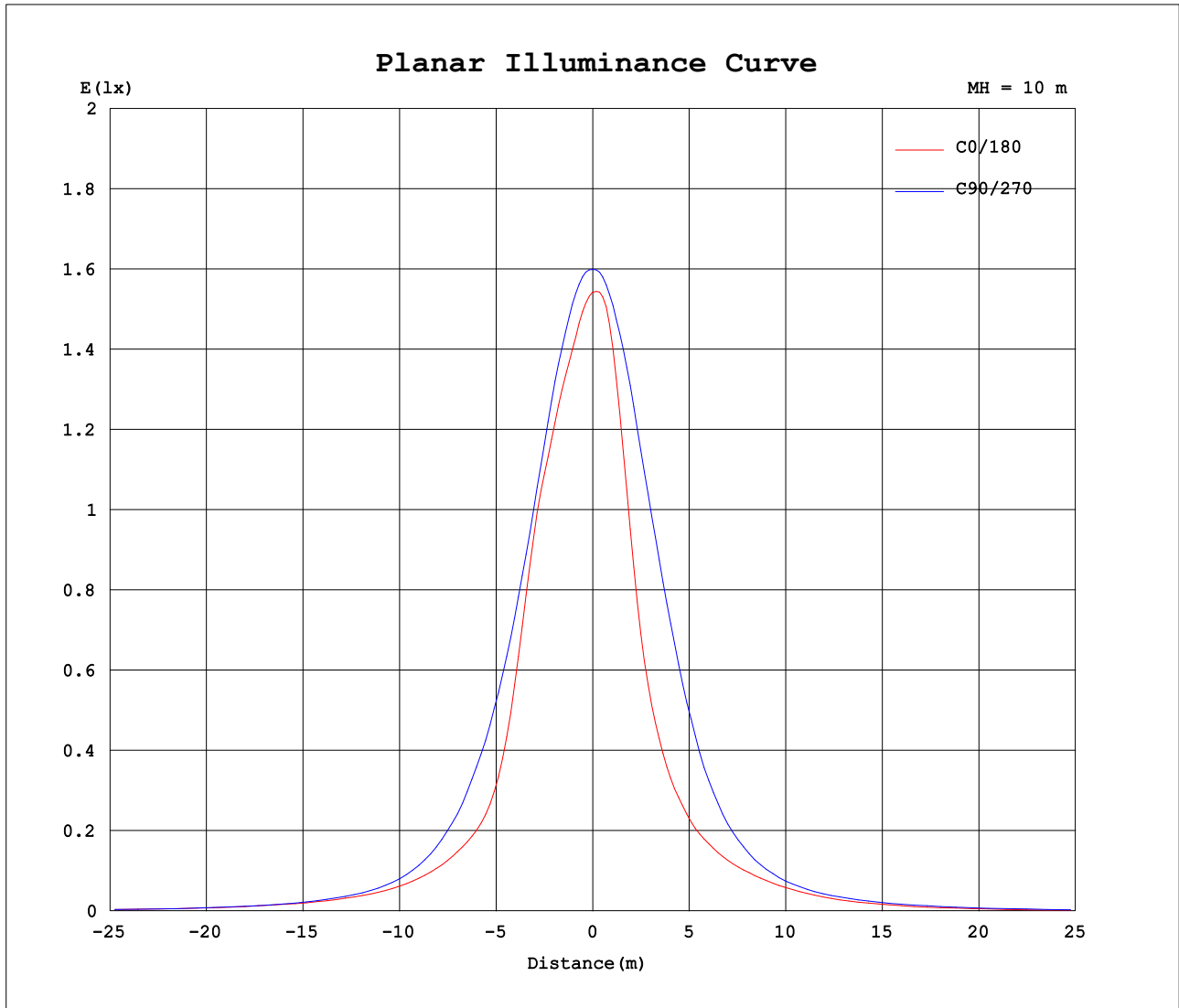
Test:U:24.00V I:0.2310A P:5.540W PF:1.000 Lamp Flux:136.263x1 lm		
NAME: SFW20-24V-3535-24-RGB-2040-R	TYPE: 硅胶	WEIGHT:
DIM.: 18.5MM*18.5MM	SPEC.:	SERIAL No.: 202403007
MFR.: OLYMPIA	SUR.: 1.0*0.0185	PROTECTION ANGLE:



C Range: 0 - 360DEG
C Interval: 30.0DEG
Test Speed: HIGH
Temperature: 25.3DEG
Operators:
Test Date: 2024-03-30

γ Range: 0 - 180DEG
 γ Interval: 1.0DEG
Test System: EVERFINE GO-2000B_V1 SYSTEM V2.0.269
Humidity: 65.0%
Test Distance: 9.200m [K=1.0000]
Remarks:

Planar Illuminance Curve



C Range: 0 - 360DEG
C Interval: 30.0DEG
Test Speed: HIGH
Temperature: 25.3DEG
Operators:
Test Date: 2024-03-30

γ Range: 0 - 180DEG
 γ Interval: 1.0DEG
Test System: EVERFINE GO-2000B_V1 SYSTEM V2.0.269
Humidity: 65.0%
Test Distance: 9.200m [K=1.0000]
Remarks:

LUMINOUS DISTRIBUTION INTENSITY DATA

Test:U:24.00V I:0.2310A P:5.540W PF:1.000 Lamp Flux:136.263x1 lm		
NAME: SFW20-24V-3535-24-RGB-2040-R	TYPE: 硅胶	WEIGHT:
DIM.: 18.5MM*18.5MM	SPEC.:	SERIAL No.:202403007
MFR.: OLYMPIA	SUR.:1.0*0.0185	PROTECTION ANGLE:

Table--1

UNIT: cd

C (DEG) γ (DEG)	0	30	60	90	120	150	180	210	240	270	300	330						
0	154	157	159	160	161	162	154	157	159	160	161	162						
5	145	150	154	156	156	154	148	150	155	155	155	154						
10	132	136	139	143	137	121	110	117	137	142	141	140						
15	116	118	119	123	110	82.0	69.2	76.6	108	122	122	123						
20	85.5	97.5	99.2	101	86.0	56.7	47.3	51.7	78.2	98.7	102	102						
25	51.2	67.0	78.1	79.2	64.6	41.7	35.2	37.2	55.0	76.0	82.2	69.2						
30	33.8	41.1	59.8	60.5	47.2	32.3	27.7	28.2	38.5	55.1	62.5	44.2						
35	27.0	28.4	44.8	44.1	34.8	26.5	23.0	22.7	28.1	39.4	45.4	31.4						
40	21.7	22.9	32.3	31.7	26.3	21.7	19.8	18.9	21.5	28.5	32.4	24.7						
45	17.6	18.9	23.6	22.8	20.2	17.8	16.6	15.8	17.0	21.2	23.7	19.9						
50	14.7	15.6	17.8	17.2	15.9	14.6	13.4	13.0	13.8	16.4	18.2	16.5						
55	12.5	12.8	13.8	13.8	12.6	11.6	10.5	10.5	11.3	13.3	14.5	13.8						
60	10.5	10.5	11.0	11.0	9.76	8.98	8.04	8.11	8.95	10.6	11.6	11.4						
65	8.48	8.52	8.67	8.41	7.26	6.53	5.71	5.87	6.67	8.10	8.96	9.04						
70	6.45	6.59	6.49	6.15	5.08	4.35	3.72	3.80	4.61	5.82	6.56	6.77						
75	4.50	4.66	4.54	4.12	3.24	2.78	2.31	2.34	2.80	3.79	4.44	4.61						
80	2.91	2.98	2.84	2.42	1.88	1.63	1.28	1.30	1.46	2.07	2.64	2.79						
85	1.75	1.74	1.56	1.15	0.93	0.82	0.50	0.53	0.56	0.77	1.26	1.50						
90	0.91	0.87	0.71	0.52	0.55	0.54	0.24	0.26	0.24	0.20	0.38	0.61						
95	0.53	0.51	0.53	0.54	0.54	0.54	0.25	0.24	0.26	0.20	0.23	0.23						
100	0.50	0.51	0.53	0.56	0.54	0.54	0.28	0.24	0.31	0.24	0.26	0.22						
105	0.50	0.51	0.53	0.57	0.54	0.56	0.32	0.28	0.35	0.29	0.31	0.22						
110	0.50	0.52	0.53	0.59	0.54	0.58	0.37	0.36	0.41	0.35	0.37	0.28						
115	0.50	0.54	0.53	0.63	0.59	0.62	0.43	0.40	0.47	0.41	0.42	0.32						
120	0.52	0.57	0.57	0.67	0.64	0.66	0.51	0.48	0.54	0.47	0.49	0.39						
125	0.55	0.62	0.62	0.72	0.70	0.73	0.59	0.56	0.62	0.55	0.56	0.46						
130	0.61	0.68	0.68	0.79	0.76	0.80	0.67	0.65	0.69	0.63	0.65	0.55						
135	0.69	0.74	0.75	0.84	0.84	0.89	0.75	0.73	0.77	0.70	0.72	0.63						
140	0.77	0.83	0.82	0.91	0.91	0.98	0.84	0.79	0.83	0.77	0.80	0.72						
145	0.87	0.92	0.89	0.98	0.98	1.06	0.89	0.86	0.90	0.83	0.86	0.79						
150	0.96	1.01	0.95	1.03	1.03	1.13	0.94	0.92	0.96	0.88	0.91	0.86						
155	1.05	1.08	1.01	1.08	1.08	1.16	0.97	0.95	1.01	0.92	0.96	0.92						
160	1.10	1.13	1.05	1.12	1.11	1.16	1.00	1.00	1.05	0.98	1.00	0.94						
165	1.12	1.13	1.08	1.13	1.12	1.16	1.01	1.01	1.08	1.01	1.03	0.99						
170	1.13	1.13	1.09	1.13	1.13	1.13	1.04	1.03	1.11	1.07	1.07	1.01						
175	1.13	1.13	1.12	1.13	1.14	1.13	1.08	1.09	1.12	1.09	1.13	1.03						
180	1.13	1.13	1.13	1.13	1.14	1.13	1.11	1.11	1.12	1.14	1.14	1.10						

C Range: 0 - 360DEG
C Interval: 30.0DEG
Test Speed: HIGH
Temperature:25.3DEG
Operators:
Test Date:2024-03-30

γ Range: 0 - 180DEG
γ Interval: 1.0DEG
Test System:EVERFINE GO-2000B_V1 SYSTEM V2.0.269
Humidity:65.0%
Test Distance:9.200m [K=1.0000]
Remarks:

Photometric Data Table [cd]

G/C	0.0	30.0	60.0	90.0	120.0	150.0	180.0	210.0	240.0	270.0
0.0	154.2	156.7	158.6	159.9	161.0	161.7	154.2	156.7	158.6	159.9
3.0	150.0	153.9	156.9	158.7	159.4	160.2	153.7	155.9	157.9	158.6
6.0	142.3	146.8	151.3	153.7	152.8	149.2	142.4	145.4	152.1	153.5
9.0	134.9	138.6	142.4	145.8	141.4	128.6	119.0	125.4	141.4	145.4
12.0	125.6	130.1	131.1	135.8	126.4	104.6	91.69	99.50	126.5	134.3
15.0	116.3	118.3	119.0	123.4	110.1	81.98	69.16	76.63	108.4	121.5
18.0	100.2	107.6	107.4	109.6	95.33	64.99	54.50	60.13	89.54	108.2
21.0	78.04	91.82	94.78	96.40	81.24	53.12	44.13	48.29	73.17	94.19
24.0	56.98	73.32	82.24	83.27	68.37	44.26	37.17	39.50	58.96	80.75
27.0	42.01	55.69	70.28	71.29	56.97	37.48	31.44	33.04	47.36	67.61
30.0	33.82	41.08	59.83	60.49	47.21	32.33	27.66	28.17	38.52	55.08
33.0	29.26	32.24	50.54	50.50	39.20	28.47	24.74	24.56	31.78	45.51
36.0	25.76	26.98	41.96	41.54	32.83	25.60	22.21	21.86	26.55	36.95
39.0	22.54	23.70	34.52	33.99	27.71	22.59	20.42	19.62	22.56	30.51
42.0	19.99	21.21	28.36	27.86	23.56	20.04	18.52	17.56	19.51	25.31
45.0	17.61	18.91	23.62	22.83	20.21	17.85	16.56	15.75	17.03	21.24
48.0	15.72	16.87	19.89	19.17	17.48	15.84	14.62	14.07	14.97	18.09
51.0	14.22	15.10	16.84	16.46	15.17	13.94	12.74	12.49	13.28	15.68
54.0	12.89	13.36	14.44	14.40	13.17	12.15	11.06	10.99	11.78	13.83
57.0	11.69	11.88	12.53	12.65	11.41	10.52	9.523	9.522	10.34	12.16
60.0	10.51	10.53	10.99	11.00	9.755	8.976	8.041	8.110	8.950	10.57
63.0	9.308	9.294	9.595	9.413	8.238	7.504	6.628	6.749	7.573	9.066
66.0	8.076	8.124	8.232	7.932	6.795	6.078	5.262	5.432	6.237	7.613
69.0	6.839	6.957	6.910	6.565	5.503	4.771	4.052	4.179	5.016	6.236
72.0	5.639	5.801	5.689	5.318	4.317	3.656	3.093	3.154	3.840	4.979
75.0	4.502	4.661	4.538	4.124	3.241	2.777	2.310	2.339	2.796	3.788
78.0	3.487	3.596	3.482	3.093	2.385	2.049	1.652	1.665	1.922	2.702
81.0	2.651	2.691	2.546	2.119	1.656	1.461	1.109	1.122	1.249	1.771
84.0	1.948	1.953	1.767	1.385	1.083	0.9486	0.6316	0.6597	0.7068	0.9724
87.0	1.374	1.351	1.153	0.7326	0.6598	0.6177	0.3111	0.3475	0.3059	0.4636
90.0	0.9112	0.8685	0.7100	0.5177	0.5479	0.5428	0.2412	0.2564	0.2412	0.2012
93.0	0.6089	0.5474	0.5380	0.5378	0.5428	0.5428	0.2412	0.2412	0.2514	0.2010
96.0	0.5128	0.5076	0.5277	0.5478	0.5428	0.5428	0.2613	0.2412	0.2764	0.2010
99.0	0.5026	0.5076	0.5277	0.5579	0.5428	0.5428	0.2764	0.2412	0.2917	0.2160
102.0	0.5026	0.5126	0.5277	0.5679	0.5428	0.5528	0.2966	0.2761	0.3267	0.2662
105.0	0.5026	0.5127	0.5277	0.5730	0.5428	0.5629	0.3216	0.2814	0.3519	0.2864
108.0	0.5026	0.5177	0.5277	0.5881	0.5428	0.5680	0.3419	0.3065	0.3821	0.3165
111.0	0.5026	0.5278	0.5277	0.6082	0.5428	0.5880	0.3821	0.3668	0.4173	0.3518
114.0	0.5026	0.5378	0.5277	0.6233	0.5679	0.6032	0.4173	0.3869	0.4575	0.3969
117.0	0.5026	0.5579	0.5477	0.6433	0.5980	0.6283	0.4576	0.4522	0.5028	0.4322
120.0	0.5175	0.5679	0.5678	0.6685	0.6381	0.6585	0.5078	0.4773	0.5429	0.4723
123.0	0.5226	0.5981	0.6031	0.6987	0.6933	0.6937	0.5630	0.5276	0.5932	0.5226
126.0	0.5528	0.6283	0.6281	0.7338	0.7036	0.7439	0.6033	0.5828	0.6434	0.5578
129.0	0.5980	0.6586	0.6733	0.7691	0.7535	0.7892	0.6535	0.6280	0.6836	0.6081
132.0	0.6431	0.6987	0.6984	0.8093	0.7839	0.8394	0.7138	0.6783	0.7289	0.6632
135.0	0.6884	0.7440	0.7537	0.8444	0.8440	0.8897	0.7541	0.7286	0.7741	0.6985
138.0	0.7585	0.7992	0.7889	0.8847	0.8693	0.9500	0.8043	0.7739	0.8193	0.7536
141.0	0.7988	0.8495	0.8391	0.9249	0.9147	0.9953	0.8444	0.8239	0.8545	0.7739
144.0	0.8541	0.8998	0.8743	0.9700	0.9548	1.055	0.8796	0.8442	0.8897	0.8340
147.0	0.9145	0.9600	0.9246	1.000	1.000	1.096	0.9098	0.8794	0.9299	0.8543
150.0	0.9647	1.010	0.9547	1.030	1.030	1.126	0.9399	0.9197	0.9550	0.8794
153.0	1.015	1.050	0.9900	1.066	1.075	1.166	0.9649	0.9347	0.9852	0.9247
156.0	1.075	1.086	1.020	1.091	1.080	1.161	0.9801	0.9598	1.010	0.9347
159.0	1.090	1.116	1.040	1.106	1.101	1.156	0.9902	0.9850	1.030	0.9599
162.0	1.111	1.126	1.070	1.131	1.111	1.156	1.005	1.000	1.060	1.000
165.0	1.121	1.126	1.076	1.131	1.121	1.156	1.010	1.005	1.076	1.010
168.0	1.126	1.126	1.086	1.131	1.121	1.136	1.025	1.015	1.091	1.040
171.0	1.126	1.126	1.096	1.131	1.136	1.126	1.045	1.035	1.116	1.065
174.0	1.126	1.126	1.111	1.131	1.141	1.126	1.066	1.070	1.116	1.086
177.0	1.126	1.126	1.121	1.131	1.141	1.126	1.096	1.091	1.116	1.111
180.0	1.126	1.126	1.126	1.126	1.141	1.131	1.106	1.106	1.116	1.141
G/C	300.0	330.0								
0.0	161.0	161.7								
3.0	159.0	158.2								
6.0	152.6	150.9								
9.0	144.2	142.1								
12.0	134.0	133.4								
15.0	122.5	123.1								
18.0	110.5	111.9								
21.0	98.52	95.54								
24.0	86.24	75.67								
27.0	73.92	58.16								
30.0	62.53	44.23								

C Range: 0 - 360DEG
 C Interval: 30.0DEG
 Test Speed: HIGH
 Temperature: 25.3DEG
 Operators:
 Test Date: 2024-03-30

γ Range: 0 - 180DEG
 γ Interval: 1.0DEG
 Test System: EVERFINE GO-2000B_V1 SYSTEM V2.0.269
 Humidity: 65.0%
 Test Distance: 9.200m [K=1.0000]
 Remarks:

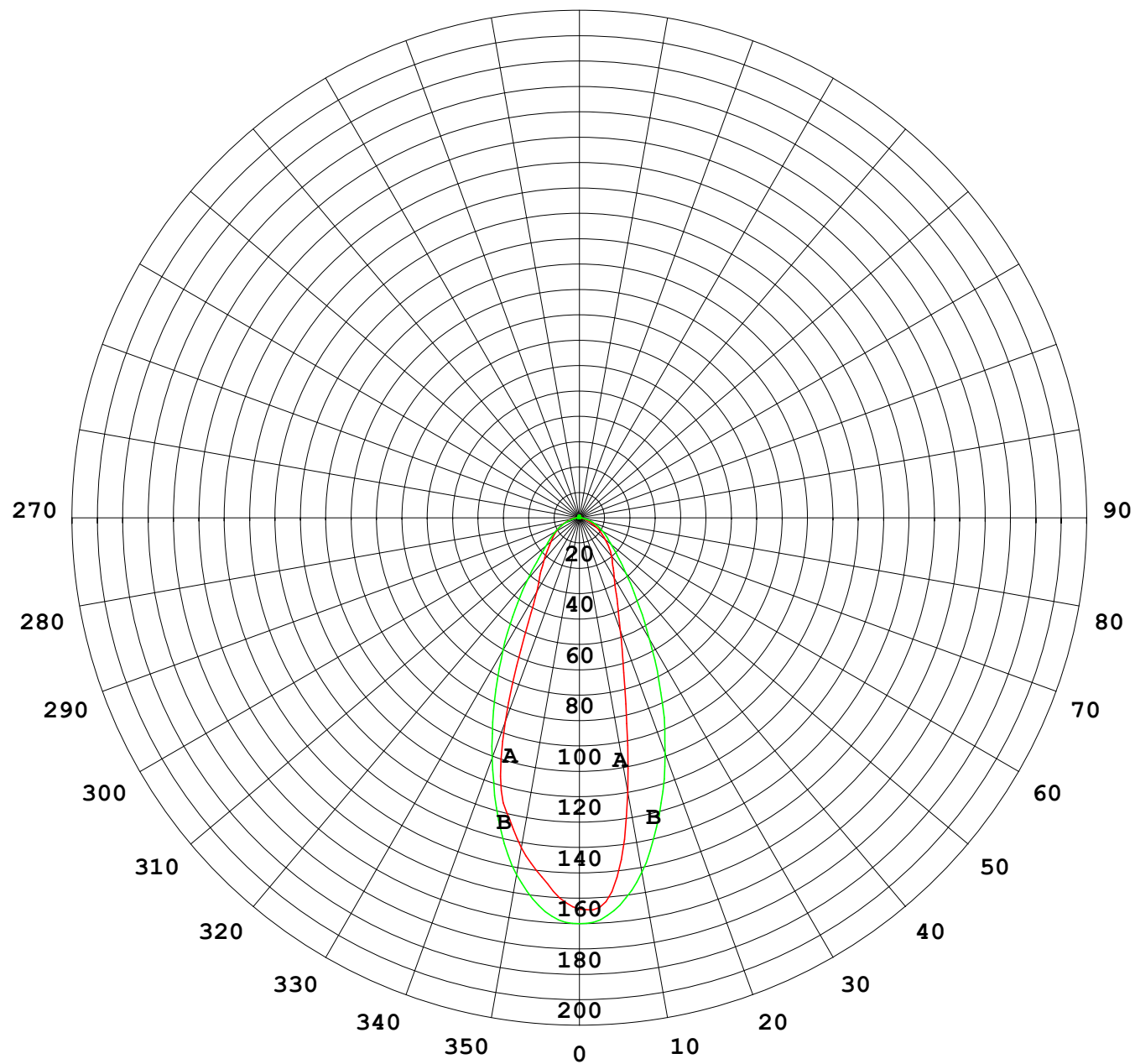
Photometric Data Table [cd]

33.0	51.96	35.24
36.0	42.42	29.87
39.0	34.60	25.74
42.0	28.48	22.67
45.0	23.74	19.87
48.0	20.17	17.68
51.0	17.39	15.88
54.0	15.17	14.24
57.0	13.31	12.75
60.0	11.61	11.39
63.0	9.990	9.960
66.0	8.448	8.558
69.0	6.996	7.251
72.0	5.669	5.914
75.0	4.444	4.608
78.0	3.328	3.481
81.0	2.328	2.510
84.0	1.500	1.716
87.0	0.8425	1.132
90.0	0.3758	0.6143
93.0	0.2211	0.3072
96.0	0.2412	0.2262
99.0	0.2564	0.2211
102.0	0.2865	0.2211
105.0	0.3068	0.2211
108.0	0.3419	0.2562
111.0	0.3770	0.2814
114.0	0.4122	0.3115
117.0	0.4574	0.3518
120.0	0.4926	0.3918
123.0	0.5379	0.4372
126.0	0.5782	0.4823
129.0	0.6235	0.5276
132.0	0.6736	0.5879
135.0	0.7238	0.6331
138.0	0.7641	0.6885
141.0	0.8142	0.7485
144.0	0.8495	0.7788
147.0	0.8846	0.8341
150.0	0.9098	0.8593
153.0	0.9399	0.8944
156.0	0.9700	0.9197
159.0	0.9901	0.9398
162.0	1.015	0.9549
165.0	1.030	0.9899
168.0	1.056	1.010
171.0	1.081	1.010
174.0	1.111	1.020
177.0	1.141	1.080
180.0	1.141	1.096

C Range: 0 - 360DEG
C Interval: 30.0DEG
Test Speed: HIGH
Temperature: 25.3DEG
Operators:
Test Date: 2024-03-30

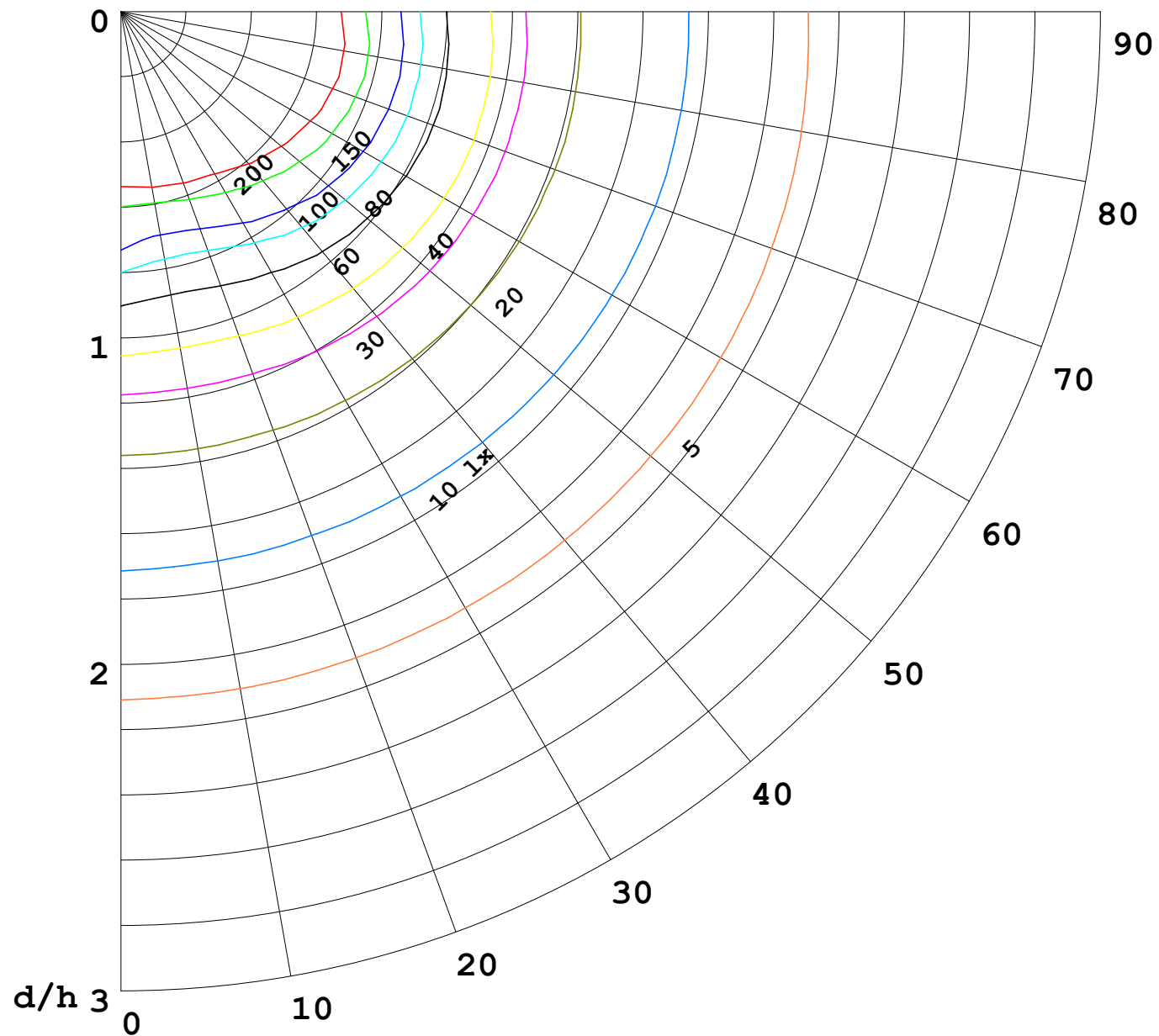
γ Range: 0 - 180DEG
γ Interval: 1.0DEG
Test System: EVERFINE GO-2000B_V1 SYSTEM V2.0.269
Humidity: 65.0%
Test Distance: 9.200m [K=1.0000]
Remarks:

I (cd)



1000 lm

$\kappa = 1$



F = 5000 lm
 K = 0.7
 Hcc = 0.0 m
 Hfc = 0.0 m
 Eave = 100 lx

	Pcc	Pw	Pfc
—	70	50	30
—	50	30	20

