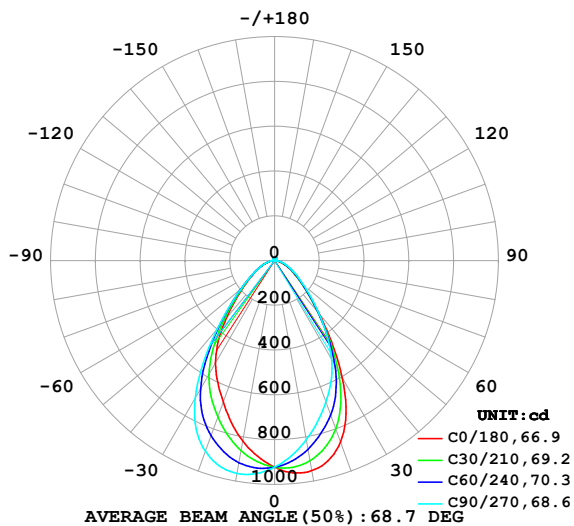


LUMINAIRE PHOTOMETRIC TEST REPORT

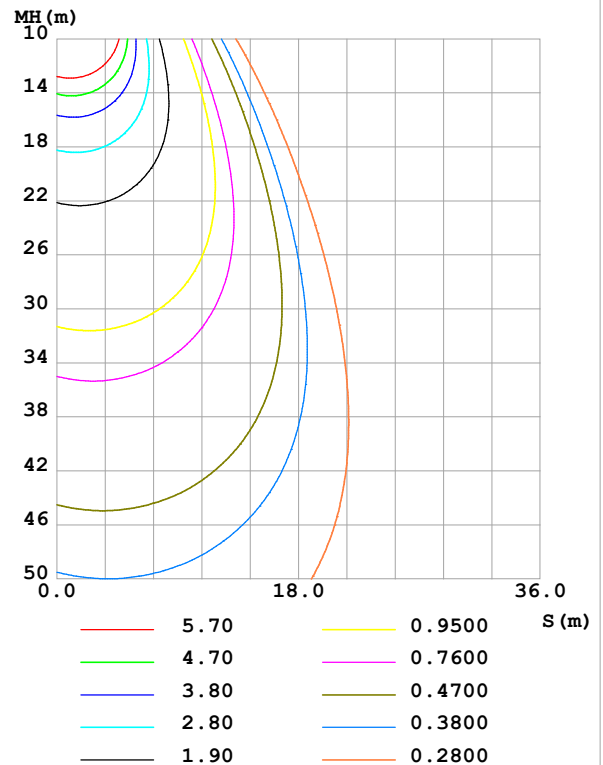
Test:U:24.00V I:0.7653A P:18.37W PF:1.000 Freq:0Hz Lamp Flux:1398.93x1 lm		
NAME: SFW20-24V-3535-24-CC-4000K-80-60	TYPE:	WEIGHT:
SPEC.:	DIM.: Length=1m	SERIAL No.:
MFR.: OLympia lighting	SUR.:	Shielding Angle:

DATA OF LAMP		PHOTOMETRIC DATA Eff: 76.16 lm/W			
MODEL	3535	Imax (cd)	996.3	S/MH(C0/180)	0.91
NOMINAL POWER(W)	18	LOR(%)	100.0	S/MH(C90/270)	1.10
RATED VOLTAGE(V)	24	TOTAL FLUX(lm)	1398.9	η UP,DN(C0-180)	1.9,44.9
NOMINAL FLUX(lm)	1398.93	CIE CLASS	DIRECT	η UP,DN(C180-360)	1.6,51.6
LAMPS INSIDE	1	η up (%)	3.5	CIBSE SHR NOM	1.00
TEST VOLTAGE(V)		η down (%)	96.5	CIBSE SHR MAX	1.05

LUMINOUS INTENSITY DISTRIBUTION DIAGRAM



C0 PLANE ISOLUX DIAGRAM (UNIT:lx)



C Range: 0 - 360DEG
C Interval: 30.0DEG
Test Speed: HIGH
Temperature: 25.3°C
Operators:
Test Date: 2025-04-21

γ Range: 0 - 180DEG
 γ Interval: 1.0DEG
Test System: EVERFINE GO-2000B_V1 SYSTEM V2.00.488
Humidity: 65.0%
Test Distance: 6.360m [K=1.0000]
Remarks:

ZONAL FLUX DIAGRAM

ZONAL FLUX DIAGRAM:

γ	C0	C45	C90	C135	C180	C225	C270	C315	γ	Φ zone	Φ total	%lum, lamp
10	952.8	882.1	813.5	790.3	818.8	889.7	965.4	991.1	0- 10	86.45	86.45	6.18,6.18
20	861.8	766.1	671.9	636.7	672.4	786.9	906.0	932.7	10- 20	236.4	322.9	23.1,23.1
30	605.3	554.3	509.5	490.0	528.7	624.7	710.2	685.6	20- 30	317.7	640.6	45.8,45.8
40	310.3	303.3	308.3	310.8	336.0	374.6	399.1	363.0	30- 40	286.6	927.3	66.3,66.3
50	156.7	159.1	167.6	171.8	179.5	190.5	195.8	179.0	40- 50	189.6	1117	79.8,79.8
60	84.69	88.97	95.48	98.03	99.29	101.6	101.9	94.38	50- 60	116.8	1234	88.2,88.2
70	40.03	45.54	52.21	52.87	52.17	53.09	53.15	47.19	60- 70	70.22	1304	93.2,93.2
80	15.39	17.56	21.43	20.15	18.40	21.01	22.45	18.74	70- 80	35.04	1339	95.7,95.7
90	4.233	4.400	4.566	4.383	3.836	4.080	4.307	4.064	80- 90	11.11	1350	96.5,96.5
100	4.975	5.254	5.643	5.219	4.336	4.488	4.750	4.556	90-100	4.862	1355	96.8,96.8
110	6.109	6.527	6.989	6.696	5.515	5.554	5.647	5.475	100-110	5.766	1361	97.3,97.3
120	7.547	8.053	8.548	8.422	6.902	6.821	6.801	6.626	110-120	6.694	1367	97.7,97.7
130	9.126	9.620	10.05	10.07	8.277	8.170	8.071	7.936	120-130	7.345	1375	98.3,98.3
140	10.61	10.96	11.26	11.38	9.509	9.474	9.359	9.279	130-140	7.423	1382	98.8,98.8
150	11.81	11.86	12.07	12.28	10.51	10.62	10.53	10.46	140-150	6.763	1389	99.3,99.3
160	12.57	12.47	12.66	12.76	11.20	11.52	11.57	11.47	150-160	5.395	1394	99.7,99.7
170	12.98	12.91	13.13	13.03	12.10	12.36	12.56	12.38	160-170	3.494	1398	99.9,99.9
180	12.99	13.12	13.35	13.15	13.01	13.11	13.31	13.14	170-180	1.227	1399	100,100
DEG	LUMINOUS INTENSITY:cd									UNIT:lm		

Conical surface Flux(90deg): 1033.5 lm

%lum = 73.9%

%lamp = 73.9%

Conical surface Flux(130deg): 1273.6 lm

%lum = 91.0%

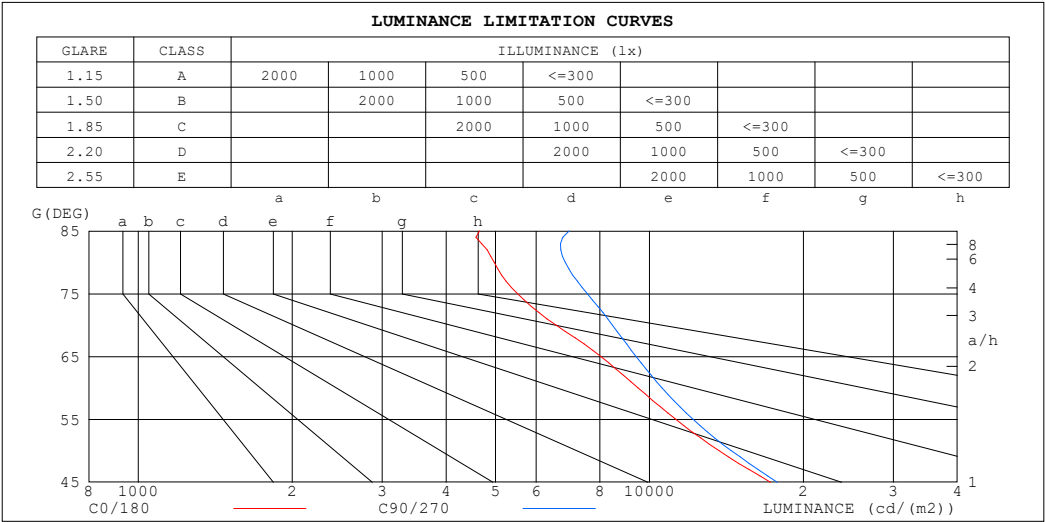
%lamp = 91.0%

C Range: 0 - 360DEG
 C Interval: 30.0DEG
 Test Speed: HIGH
 Temperature:25.3℃
 Operators:
 Test Date:2025-04-21

γ Range: 0 - 180DEG
 γ Interval: 1.0DEG
 Test System:EVERFINE GO-2000B_V1 SYSTEM V2.00.488
 Humidity:65.0%
 Test Distance:6.360m [K=1.0000]
 Remarks:

LUMINANCE LIMITATION CURVES

Test:U:24.00V I:0.7653A P:18.37W PF:1.000 Freq:0Hz Lamp Flux:1398.93x1 lm		
NAME: SFW20-24V-3535-24-CC-4000K-80-60	TYPE:	WEIGHT:
SPEC.:	DIM.: Length=1m	SERIAL No.:
MFR.: OLympia lighting	SUR.:	Shielding Angle:



LUMINANCE cd/(m2)		
G (DEG)	C0/180	C90/270
85	4652	6966
80	4971	6839
75	5524	7562
70	6563	8459
65	8028	9412
60	9498	10583
55	11249	12156
50	13669	14447
45	17257	17768

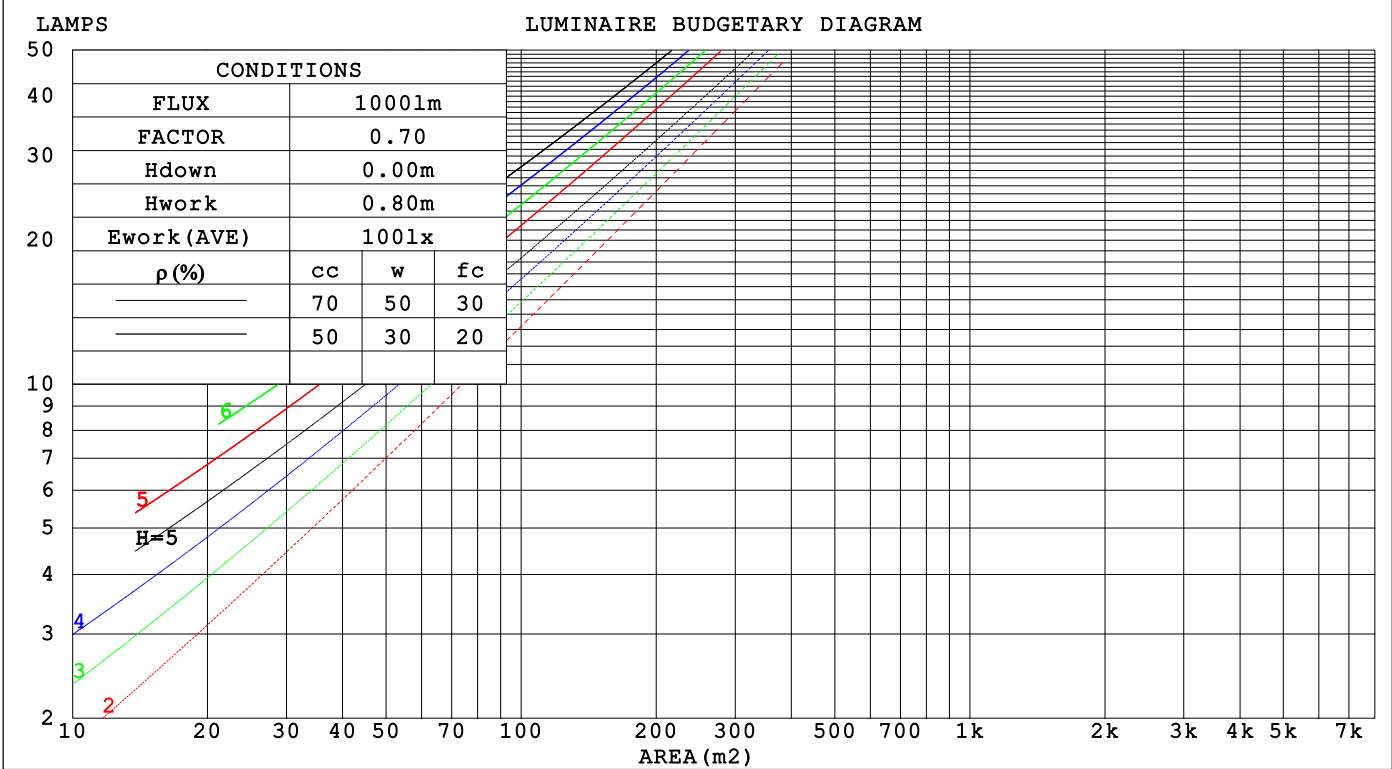
C Range: 0 - 360DEG
C Interval: 30.0DEG
Test Speed: HIGH
Temperature:25.3℃
Operators:
Test Date:2025-04-21

γ Range: 0 - 180DEG
γ Interval: 1.0DEG
Test System:EVERFINE GO-2000B_V1 SYSTEM V2.00.488
Humidity:65.0%
Test Distance:6.360m [K=1.0000]
Remarks:

CU AND LUMINAIRE BUDGETARY ESTIMATE DIAGRAM

Test:U:24.00V I:0.7653A P:18.37W PF:1.000 Freq:0Hz Lamp Flux:1398.93x1 lm		
NAME: SFW20-24V-3535-24-CC-4000K-80-60	TYPE:	WEIGHT:
SPEC.:	DIM.: Length=1m	SERIAL No.:
MFR.: OLYMPIA lighting	SUR.:	Shielding Angle:

pcc	80%			70%			50%			30%			10%			0
p _w	50%	30%	10%	50%	30%	10%	50%	30%	10%	50%	30%	10%	50%	30%	10%	0
p _{fc}	20%			20%			20%			20%			20%			0
RCR	RCR:Room Cavity Ratio															



C Range: 0 - 360DEG
C Interval: 30.0DEG
Test Speed: HIGH
Temperature:25.3℃
Operators:
Test Date:2025-04-21

γ Range: 0 - 180DEG
γ Interval: 1.0DEG
Test System:EVERFINE GO-2000B_V1 SYSTEM V2.00.488
Humidity:65.0%
Test Distance:6.360m [K=1.0000]
Remarks:

WEC AND CCEC

Test:U:24.00V I:0.7653A P:18.37W PF:1.000 Freq:0Hz Lamp Flux:1398.93x1 lm		
NAME: SFW20-24V-3535-24-CC-4000K-80-60	TYPE:	WEIGHT:
SPEC.:	DIM.: Length=1m	SERIAL No.:
MFR.: OLympia lighting	SUR.:	Shielding Angle:

pcc	80%			70%			50%			30%			10%			0														
pw	50%	30%	10%	50%	30%	10%	50%	30%	10%	50%	30%	10%	50%	30%	10%	0														
pfc	20%			20%			20%			20%			20%			0														
RCR	RCR:Room Cavity Ratio															Wall Exitance Coefficients(WEC)														
0.0																														
1.0	.238	.135	.043	.230	.131	.042	.215	.124	.039	.202	.116	.037	.189	.110	.035															
2.0	.227	.124	.038	.220	.121	.037	.207	.115	.036	.195	.109	.034	.184	.104	.033															
3.0	.214	.114	.034	.208	.111	.033	.196	.106	.032	.186	.102	.031	.176	.097	.030															
4.0	.201	.104	.031	.195	.102	.030	.185	.098	.029	.176	.094	.028	.167	.091	.028															
5.0	.188	.096	.028	.184	.094	.027	.175	.091	.027	.166	.088	.026	.159	.085	.025															
6.0	.177	.089	.025	.173	.087	.025	.165	.085	.025	.158	.082	.024	.151	.079	.024															
7.0	.167	.083	.023	.163	.081	.023	.156	.079	.023	.149	.077	.022	.143	.074	.022															
8.0	.158	.077	.022	.155	.076	.022	.148	.074	.021	.142	.072	.021	.136	.070	.020															
9.0	.150	.072	.020	.147	.071	.020	.141	.070	.020	.135	.068	.019	.130	.066	.019															
10.0	.142	.068	.019	.139	.067	.019	.134	.066	.018	.129	.064	.018	.124	.062	.018															

pcc	80%			70%			50%			30%			10%			0
pw	50%	30%	10%	50%	30%	10%	50%	30%	10%	50%	30%	10%	50%	30%	10%	0
pfc	20%			20%			20%			20%			20%			0
RCR	RCR:Room Cavity Ratio						Ceiling Cavity Exitance Coefficients (CCEC)									
0.0	.217	.217	.217	.186	.186	.186	.127	.127	.127	.073	.073	.073	.023	.023	.023	
1.0	.202	.184	.167	.173	.158	.144	.118	.108	.099	.068	.063	.058	.022	.020	.019	
2.0	.191	.159	.133	.163	.137	.115	.112	.095	.080	.065	.055	.047	.021	.018	.015	
3.0	.181	.141	.109	.155	.122	.095	.106	.085	.067	.061	.049	.039	.020	.016	.013	
4.0	.172	.127	.093	.148	.110	.081	.102	.077	.057	.059	.045	.034	.019	.015	.011	
5.0	.164	.116	.081	.141	.101	.070	.097	.070	.050	.056	.041	.029	.018	.013	.010	
6.0	.157	.108	.072	.135	.093	.063	.093	.065	.044	.054	.038	.026	.017	.013	.009	
7.0	.151	.101	.065	.130	.087	.057	.090	.061	.040	.052	.036	.024	.017	.012	.008	
8.0	.145	.095	.060	.125	.082	.052	.086	.058	.037	.050	.034	.022	.016	.011	.007	
9.0	.140	.090	.056	.120	.078	.049	.083	.055	.035	.049	.032	.021	.016	.011	.007	
10.0	.135	.085	.052	.116	.074	.046	.081	.052	.033	.047	.031	.019	.015	.010	.006	

C Range: 0 - 360DEG
C Interval: 30.0DEG
Test Speed: HIGH
Temperature:25.3℃
Operators:
Test Date:2025-04-21

γ Range: 0 - 180DEG
γ Interval: 1.0DEG
Test System:EVERFINE GO-2000B_V1 SYSTEM V2.00.488
Humidity:65.0%
Test Distance:6.360m [K=1.0000]
Remarks:

UGR(Unified Glare Rating) Table

Test:U:24.00V I:0.7653A P:18.37W PF:1.000 Freq:0Hz Lamp Flux:1398.93x1 lm										
NAME: SFW20-24V-3535-24-CC-4000K-80-60					TYPE:			WEIGHT:		
SPEC.:					DIM.: Length=1m			SERIAL No.:		
MFR.: OLympia lighting					SUR.:			Shielding Angle:		
ceiling/cavity	0.7	0.7	0.5	0.5	0.3	0.7	0.7	0.5	0.5	0.3
walls	0.5	0.3	0.5	0.3	0.3	0.5	0.3	0.5	0.3	0.3
working plane	0.2	0.2	0.2	0.2	0.2	0.2	0.2	0.2	0.2	0.2
Room dimensions	Viewed crosswise					Viewed endwise				
x = 2H y = 2H	20.4	21.6	20.7	21.9	22.1	20.6	21.8	20.9	22.0	22.3
3H	21.0	22.1	21.3	22.4	22.7	21.4	22.5	21.7	22.8	23.1
4H	21.2	22.2	21.5	22.5	22.8	21.7	22.7	22.1	23.0	23.4
6H	21.3	22.3	21.7	22.6	22.9	21.9	22.9	22.3	23.2	23.6
8H	21.3	22.3	21.7	22.6	23.0	22.0	23.0	22.4	23.3	23.6
12H	21.4	22.3	21.7	22.6	23.0	22.1	23.0	22.5	23.3	23.7
4H 2H	20.7	21.7	21.0	22.0	22.3	20.8	21.9	21.2	22.2	22.5
3H	21.4	22.3	21.8	22.6	23.0	21.8	22.7	22.2	23.0	23.4
4H	21.7	22.5	22.1	22.9	23.2	22.2	23.0	22.6	23.4	23.8
6H	21.9	22.6	22.3	23.0	23.4	22.6	23.3	23.0	23.7	24.1
8H	22.0	22.6	22.4	23.0	23.5	22.7	23.4	23.1	23.8	24.2
12H	22.0	22.6	22.5	23.1	23.5	22.8	23.4	23.3	23.8	24.3
8H 4H	21.8	22.4	22.2	22.9	23.3	22.3	22.9	22.7	23.4	23.8
6H	22.1	22.6	22.6	23.1	23.6	22.7	23.3	23.2	23.7	24.2
8H	22.2	22.7	22.7	23.2	23.7	22.9	23.4	23.4	23.9	24.4
12H	22.3	22.7	22.9	23.2	23.8	23.1	23.5	23.6	24.0	24.6
12H 4H	21.8	22.4	22.2	22.8	23.3	22.2	22.9	22.7	23.3	23.8
6H	22.1	22.6	22.6	23.1	23.6	22.7	23.2	23.2	23.7	24.2
8H	22.3	22.7	22.8	23.2	23.7	23.0	23.4	23.5	23.9	24.4
Variations with the observer position at spacings(CIE Pub.117):										
S = 1.0H	+ 0.6 / - 0.8					+ 0.5 / - 0.6				
1.5H	+ 0.9 / - 0.5					+ 0.6 / - 0.3				
2.0H	+ 1.1 / - 0.8					+ 1.0 / - 0.6				

CIE Pub.117, 1399 lm Total Lamp Luminous Flux Correct ($8\log(F/F_0) = 1.2$)
Area: 0.018 m²

C Range: 0 - 360DEG
C Interval: 30.0DEG
Test Speed: HIGH
Temperature:25.3℃
Operators:
Test Date:2025-04-21

γ Range: 0 - 180DEG
γ Interval: 1.0DEG
Test System:EVERFINE GO-2000B_V1 SYSTEM V2.00.488
Humidity:65.0%
Test Distance:6.360m [K=1.0000]
Remarks:

UTILIZATION FACTORS TABLE

Test:U:24.00V I:0.7653A P:18.37W PF:1.000 Freq:0Hz Lamp Flux:1398.93x1 lm		
NAME: SFW20-24V-3535-24-CC-4000K-80-60	TYPE:	WEIGHT:
SPEC.:	DIM.: Length=1m	SERIAL No.:
MFR.: OLympia lighting	SUR.:	Shielding Angle:

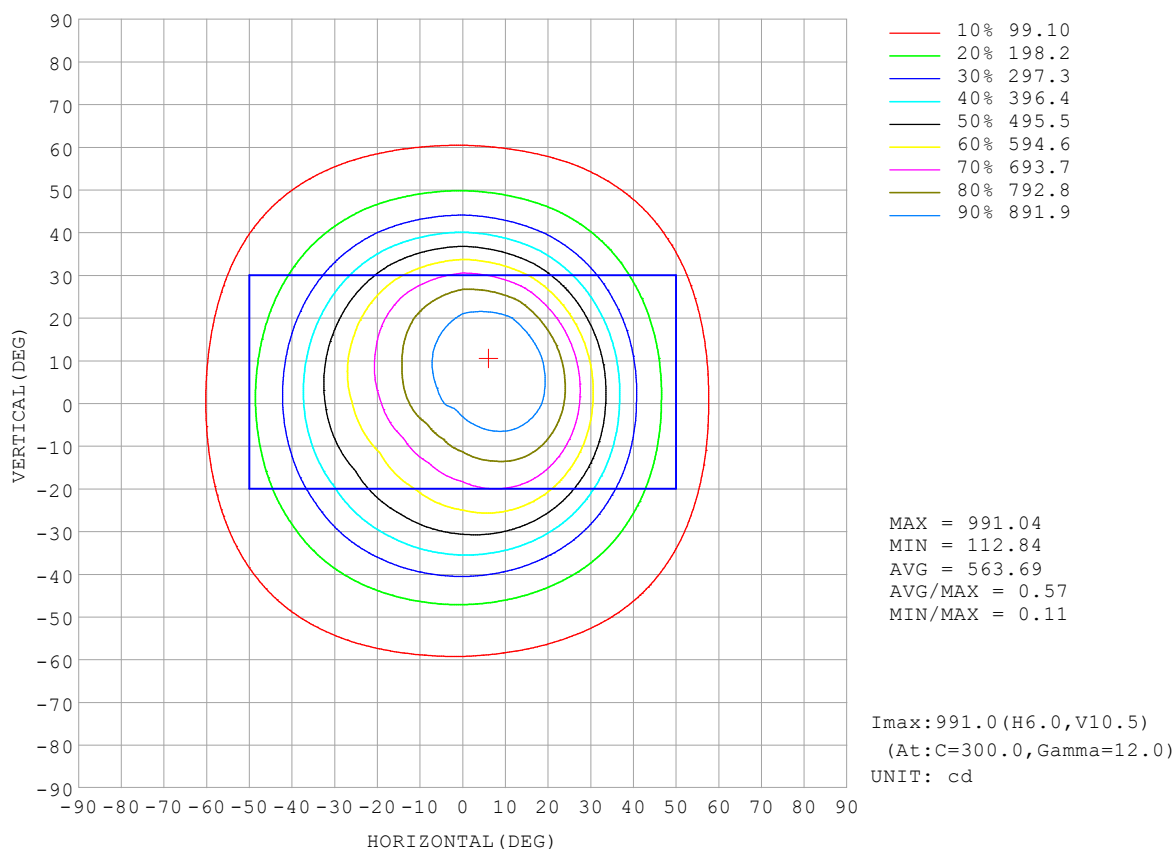
REFLECTANCE										
Ceiling	0.8	0.8	0.8	0.7	0.7	0.7	0.5	0.5	0.5	0
Walls	0.7	0.5	0.3	0.7	0.5	0.3	0.7	0.5	0.3	0
Working plane	0.2	0.2	0.2	0.2	0.2	0.2	0.2	0.2	0.2	0
ROOM INDEX	UTILIZATION FACTORS (PERCENT) $k(RI) \times RCR = 5$									
$k = 0.60$	70	61	56	70	61	56	69	61	56	50
0.80	80	71	65	79	70	65	77	69	64	59
1.00	86	78	73	85	77	72	83	78	71	66
1.25	92	84	79	91	84	78	88	82	77	71
1.50	96	89	84	94	88	83	91	86	82	75
2.00	101	95	90	99	93	89	96	91	87	80
2.50	104	98	93	102	96	92	98	93	90	82
3.00	106	101	97	104	99	96	100	96	93	85
4.00	109	105	101	107	103	100	102	99	97	88
5.00	111	107	104	108	105	102	103	101	99	89
ROOM INDEX	UF (total)									Direct
According to DIN EN 13032-2 2004			Suspended					SHRNOM = 1.25		

C Range: 0 - 360DEG
 C Interval: 30.0DEG
 Test Speed: HIGH
 Temperature: 25.3 °C
 Operators:
 Test Date: 2025-04-21

γ Range: 0 - 180DEG
 γ Interval: 1.0DEG
 Test System: EVERFINE GO-2000B_V1 SYSTEM V2.00.488
 Humidity: 65.0%
 Test Distance: 6.360m [K=1.0000]
 Remarks:

ISOCANDELA DIAGRAM

Test:U:24.00V I:0.7653A P:18.37W PF:1.000 Freq:0Hz Lamp Flux:1398.93x1 lm		
NAME: SFW20-24V-3535-24-CC-4000K-80-60	TYPE:	WEIGHT:
SPEC.:	DIM.: Length=1m	SERIAL No.:
MFR.: OLympia lighting	SUR.:	Shielding Angle:

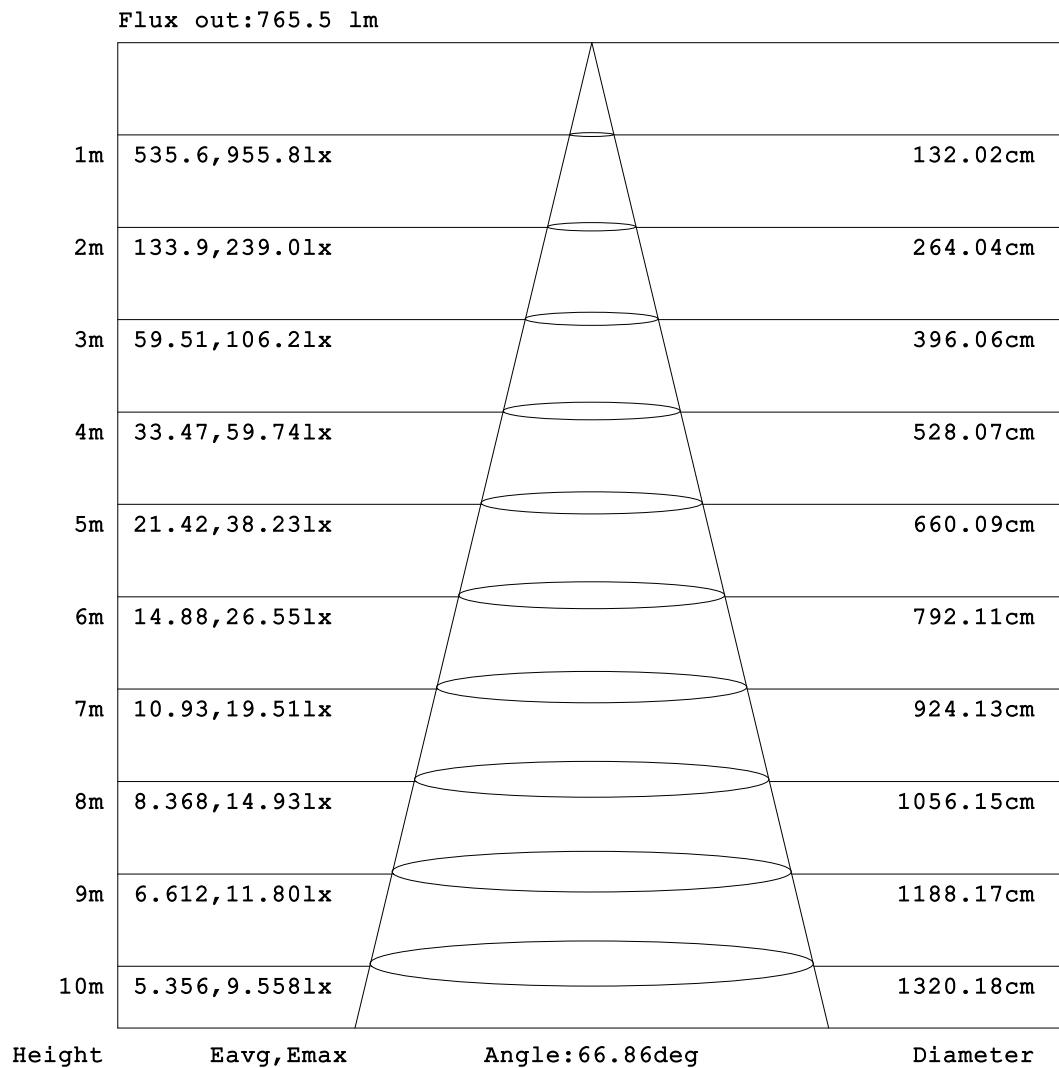


C Range: 0 - 360DEG
C Interval: 30.0DEG
Test Speed: HIGH
Temperature:25.3℃
Operators:
Test Date:2025-04-21

γ Range: 0 - 180DEG
γ Interval: 1.0DEG
Test System:EVERFINE GO-2000B_V1 SYSTEM V2.00.488
Humidity:65.0%
Test Distance:6.360m [K=1.0000]
Remarks:

AAI Figure

Test:U:24.00V I:0.7653A P:18.37W PF:1.000 Freq:0Hz Lamp Flux:1398.93x1 lm		
NAME: SFW20-24V-3535-24-CC-4000K-80-60	TYPE:	WEIGHT:
SPEC.:	DIM.: Length=1m	SERIAL No.:
MFR.: OLympia lighting	SUR.:	Shielding Angle:



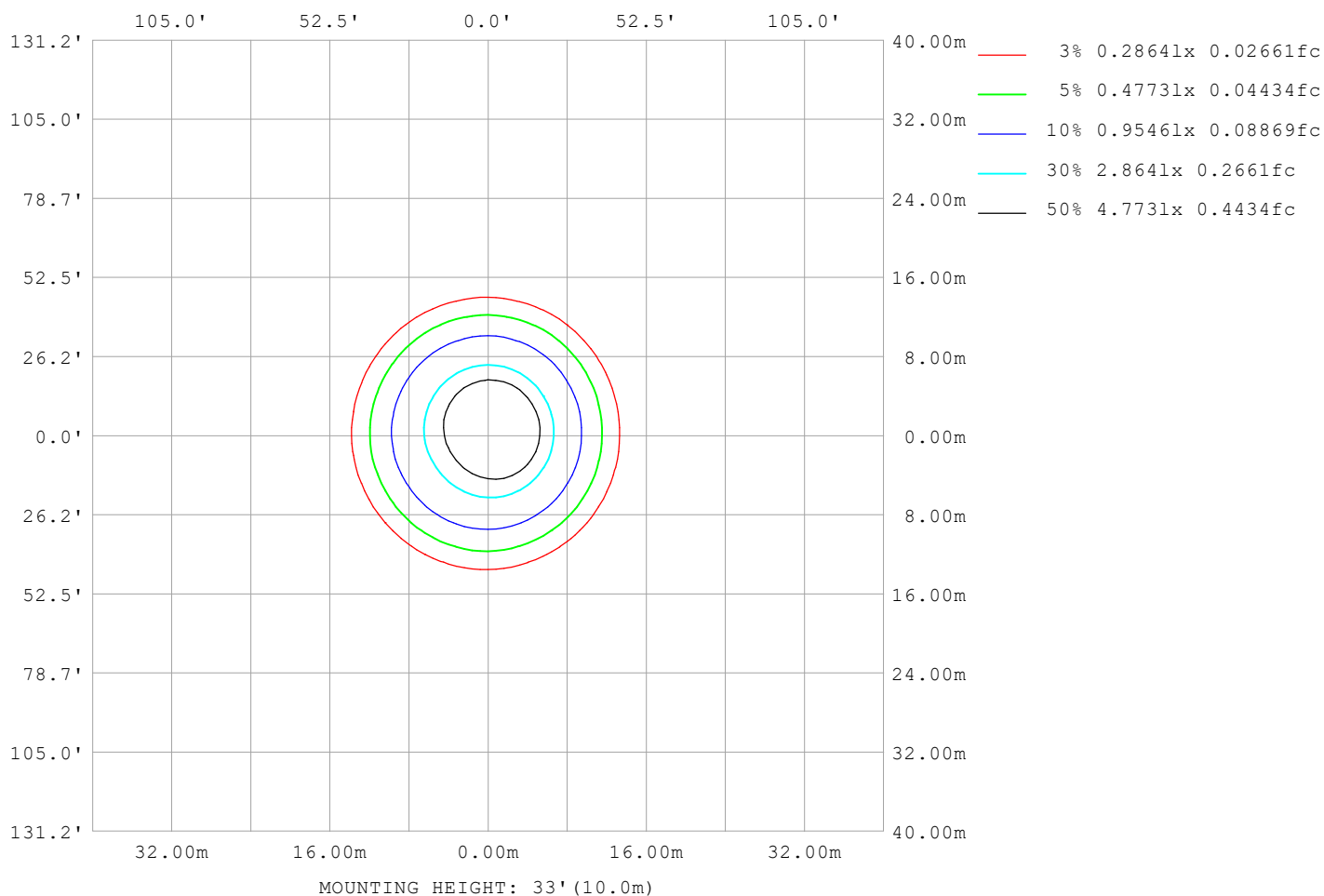
Note:The Curves indicate the illuminated area and the average illumination when the luminaire is at different distance.

C Range: 0 - 360DEG
C Interval: 30.0DEG
Test Speed: HIGH
Temperature:25.3℃
Operators:
Test Date:2025-04-21

γ Range: 0 - 180DEG
γ Interval: 1.0DEG
Test System:EVERFINE GO-2000B_V1 SYSTEM V2.00.488
Humidity:65.0%
Test Distance:6.360m [K=1.0000]
Remarks:

ISOLUX DIAGRAM

Test:U:24.00V I:0.7653A P:18.37W PF:1.000 Freq:0Hz Lamp Flux:1398.93x1 lm		
NAME: SFW20-24V-3535-24-CC-4000K-80-60	TYPE:	WEIGHT:
SPEC.:	DIM.: Length=1m	SERIAL No.:
MFR.: OLympia lighting	SUR.:	Shielding Angle:



C Range: 0 - 360DEG
C Interval: 30.0DEG
Test Speed: HIGH
Temperature: 25.3°C
Operators:
Test Date: 2025-04-21

γ Range: 0 - 180DEG
γ Interval: 1.0DEG
Test System: EVERFINE GO-2000B_V1 SYSTEM V2.00.488
Humidity: 65.0%
Test Distance: 6.360m [K=1.0000]
Remarks:

LED Avg.L Report

Test:U:24.00V I:0.7653A P:18.37W PF:1.000 Freq:0Hz Lamp Flux:1398.93x1 lm		
NAME: SFW20-24V-3535-24-CC-4000K-80-60	TYPE:	WEIGHT:
SPEC.:	DIM.: Length=1m	SERIAL No.:
MFR.: OLympia lighting	SUR.:	Shielding Angle:

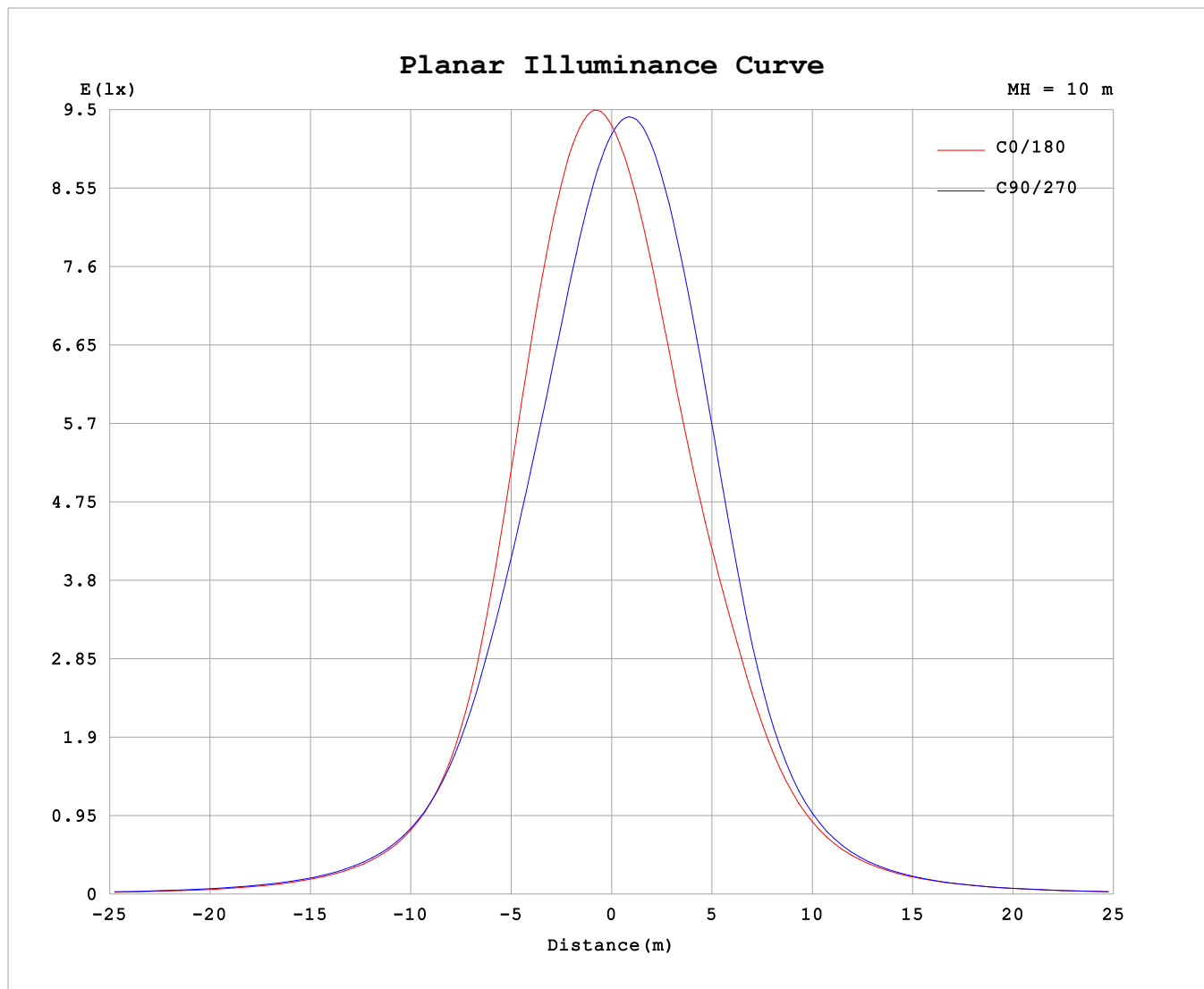
AvgL	cd/m2
L_0~180 (65) av	8805
L_0~180 (75) av	6337
L_0~180 (85) av	4945
L_90~270 (65) av	9605
L_90~270 (75) av	7671
L_90~270 (85) av	7272
L_45 (65) av	9263
L_45 (75) av	7004
L_45 (85) av	5968

Standard: GB/T 29293-2012

C Range: 0 - 360DEG
C Interval: 30.0DEG
Test Speed: HIGH
Temperature:25.3℃
Operators:
Test Date:2025-04-21

γ Range: 0 - 180DEG
γ Interval: 1.0DEG
Test System:EVERFINE GO-2000B_V1 SYSTEM V2.00.488
Humidity:65.0%
Test Distance:6.360m [K=1.0000]
Remarks:

Planar Illuminance Curve



C Range: 0 - 360DEG
C Interval: 30.0DEG
Test Speed: HIGH
Temperature: 25.3 °C
Operators:
Test Date: 2025-04-21

γ Range: 0 - 180DEG
 γ Interval: 1.0DEG
Test System: EVERFINE GO-2000B_V1 SYSTEM V2.00.488
Humidity: 65.0%
Test Distance: 6.360m [K=1.0000]
Remarks:

LUMINOUS DISTRIBUTION INTENSITY DATA

Test:U:24.00V I:0.7653A P:18.37W PF:1.000 Freq:0Hz Lamp Flux:1398.93x1 lm																	
NAME: SFW20-24V-3535-24-CC-4000K-80-60									TYPE:						WEIGHT:		
SPEC.:									DIM.: Length=1m						SERIAL No.:		
MFR.: OLYMPIA lighting									SUR.:						Shielding Angle:		

Table--1

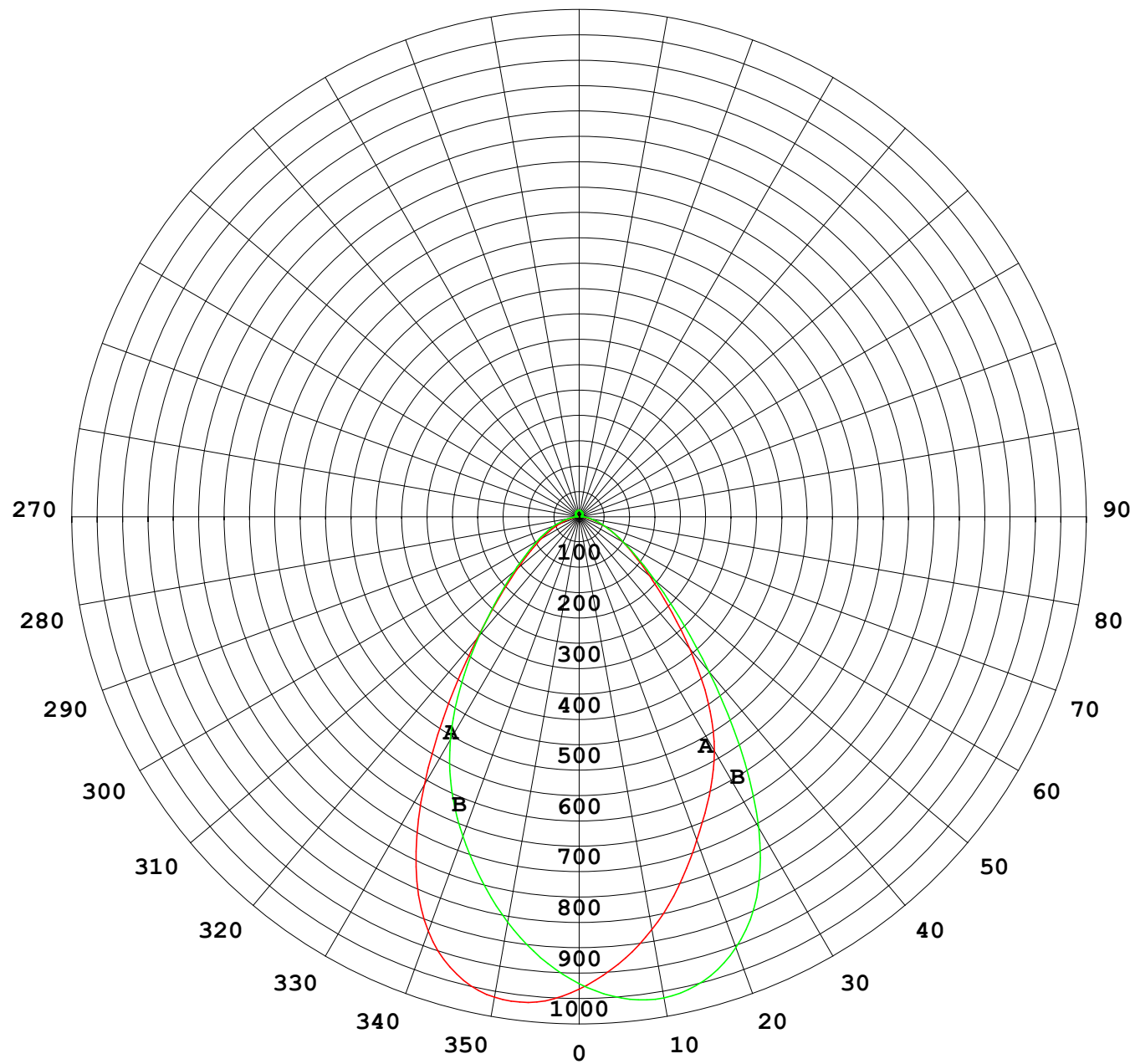
UNIT: cd

C (DEG) γ (DEG)	0	30	60	90	120	150	180	210	240	270	300	330						
0	923	923	923	923	923	923	923	923	923	923	923	923						
5	951	927	898	875	861	862	877	901	929	955	969	968						
10	953	908	856	814	789	791	819	863	917	965	994	988						
15	925	866	800	744	713	714	749	808	883	950	989	976						
20	862	799	733	672	639	635	672	742	831	906	945	920						
25	754	701	649	597	567	562	601	672	762	830	854	814						
30	605	569	540	510	490	490	529	587	662	710	711	661						
35	444	425	416	409	401	405	438	478	529	554	539	490						
40	310	303	304	308	308	313	336	360	389	399	383	343						
45	218	216	220	227	229	233	246	259	275	279	266	239						
50	157	157	161	168	171	173	180	186	195	196	188	170						
55	115	117	121	126	129	130	133	136	140	140	135	124						
60	84.7	87.0	91.0	95.5	97.8	98.3	99.3	101	103	102	98.2	90.6						
65	60.5	63.3	67.8	71.8	73.5	73.4	73.5	74.0	75.1	74.4	71.3	65.0						
70	40.0	42.8	48.3	52.2	53.2	52.5	52.2	52.6	53.6	53.2	50.2	44.2						
75	25.5	26.9	31.4	35.3	35.6	34.4	33.6	34.7	36.3	36.2	33.4	28.4						
80	15.4	16.3	18.8	21.4	21.2	19.2	18.4	19.8	22.2	22.5	20.4	17.1						
85	7.23	7.69	9.42	11.0	10.3	8.72	8.29	8.99	11.3	11.9	10.6	8.09						
90	4.23	4.31	4.49	4.57	4.48	4.28	3.84	3.98	4.18	4.31	4.17	3.96						
95	4.53	4.65	4.85	5.06	4.79	4.50	3.89	3.94	4.17	4.33	4.25	4.11						
100	4.97	5.13	5.38	5.64	5.39	5.05	4.34	4.38	4.60	4.75	4.63	4.48						
105	5.50	5.70	6.01	6.29	6.10	5.73	4.88	4.90	5.08	5.16	5.05	4.92						
110	6.11	6.36	6.70	6.99	6.87	6.52	5.51	5.50	5.61	5.65	5.54	5.41						
115	6.79	7.08	7.46	7.75	7.71	7.38	6.20	6.13	6.21	6.20	6.09	5.96						
120	7.55	7.86	8.25	8.55	8.56	8.28	6.90	6.80	6.84	6.80	6.69	6.57						
125	8.33	8.67	9.03	9.33	9.38	9.17	7.60	7.49	7.50	7.42	7.31	7.22						
130	9.13	9.47	9.77	10.0	10.1	10.00	8.28	8.17	8.17	8.07	7.97	7.91						
135	9.89	10.2	10.4	10.7	10.8	10.7	8.91	8.84	8.83	8.73	8.63	8.60						
140	10.6	10.9	11.0	11.3	11.4	11.4	9.51	9.47	9.48	9.36	9.28	9.27						
145	11.3	11.4	11.5	11.7	11.9	11.9	10.0	10.1	10.1	9.96	9.89	9.89						
150	11.8	11.9	11.9	12.1	12.2	12.3	10.5	10.6	10.7	10.5	10.5	10.5						
155	12.2	12.2	12.2	12.4	12.5	12.6	10.9	11.0	11.2	11.1	11.0	11.0						
160	12.6	12.5	12.4	12.7	12.7	12.8	11.2	11.4	11.6	11.6	11.5	11.4						
165	12.8	12.7	12.7	12.9	12.9	12.9	11.6	11.8	12.1	12.1	12.0	11.9						
170	13.0	12.9	12.9	13.1	13.1	13.0	12.1	12.2	12.5	12.6	12.5	12.3						
175	13.0	13.0	13.1	13.3	13.2	13.1	12.6	12.6	12.9	13.0	12.9	12.7						
180	13.0	13.0	13.2	13.3	13.2	13.1	13.0	13.0	13.2	13.3	13.2	13.1						

C Range: 0 - 360DEG
C Interval: 30.0DEG
Test Speed: HIGH
Temperature:25.3℃
Operators:
Test Date:2025-04-21

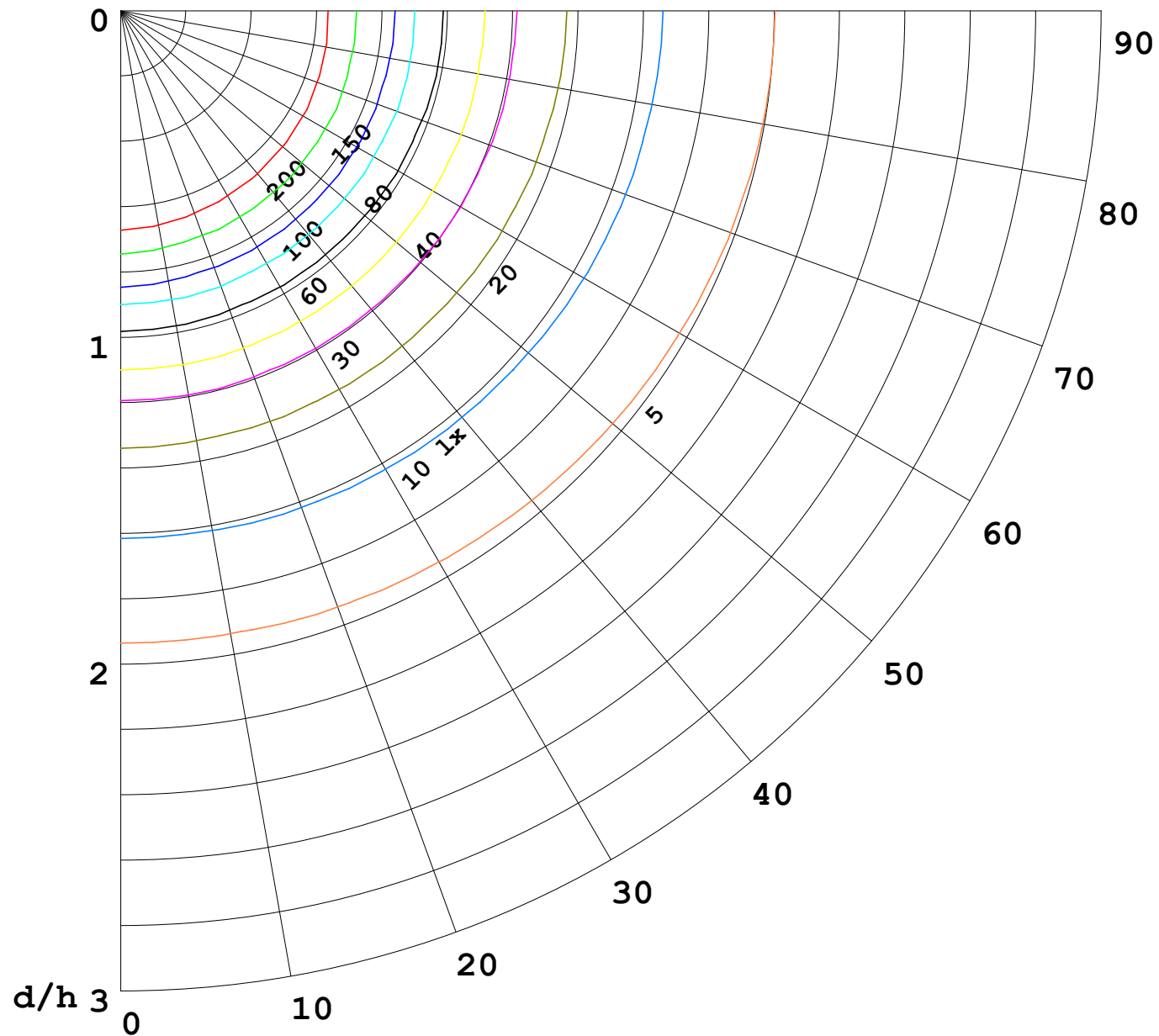
γ Range: 0 - 180DEG
γ Interval: 1.0DEG
Test System:EVERFINE GO-2000B_V1 SYSTEM V2.00.488
Humidity:65.0%
Test Distance:6.360m [K=1.0000]
Remarks:

I (cd)



1000 lm

$\kappa = 1$



F = 1000 lm
 K = 0.7
 Hcc = 0.8 m
 Hfc = 0.0 m
 Eave = 100 lx

	Pcc	Pw	Pfc
—————	70	50	30
—————	50	30	20

