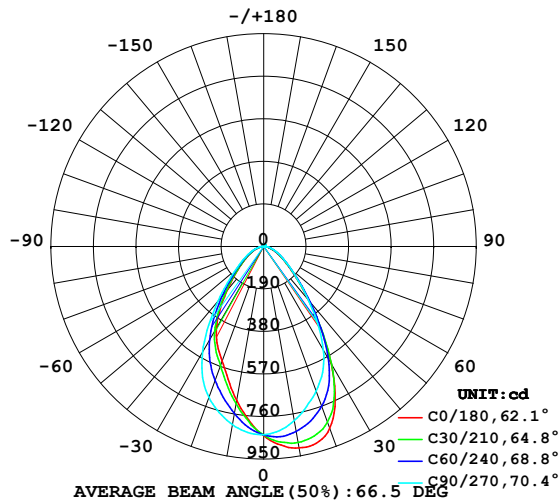


## LUMINAIRE PHOTOMETRIC TEST REPORT

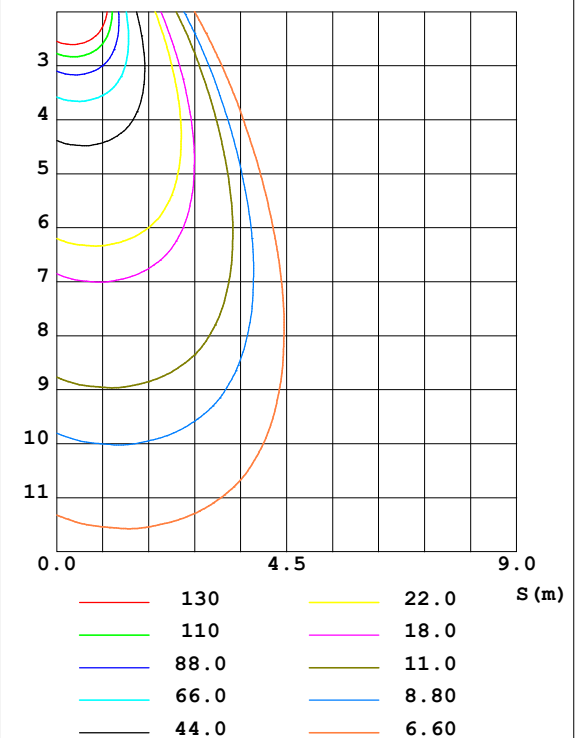
Test:U:24.00V I:0.7661A P:18.39W PF:1.000 Lamp Flux:1244.63x1 lm		
NAME: SFW20-24V-3535-24-CC-3000K-80-60	TYPE:	WEIGHT:
DIM.: Length=1m	SPEC.:	SERIAL No.:
MFR.:	SUR.:	PROTECTION ANGLE:

DATA OF LAMP		PHOTOMETRIC DATA Eff: 67.69 lm/W			
MODEL	3535	I <sub>max</sub> (cd)	915.8	S/MH (C0/180)	1.04
NOMINAL POWER (W)		LOR (%)	100.0	S/MH (C90/270)	1.01
RATED VOLTAGE (V)		TOTAL FLUX (lm)	1244.6	η UP, DN (C0-180)	1.6, 49.3
NOMINAL FLUX (lm)	1244.63	CIE CLASS	DIRECT	η UP, DN (C180-360)	1.2, 47.8
LAMPS INSIDE	1	η up (%)	2.9	CIBSE SHR NOM	1.00
TEST VOLTAGE (V)		η down (%)	97.1	CIBSE SHR MAX	1.05

LUMINOUS INTENSITY DISTRIBUTION DIAGRAM



C0 PLANE ISOLUX DIAGRAM (UNIT:lx)



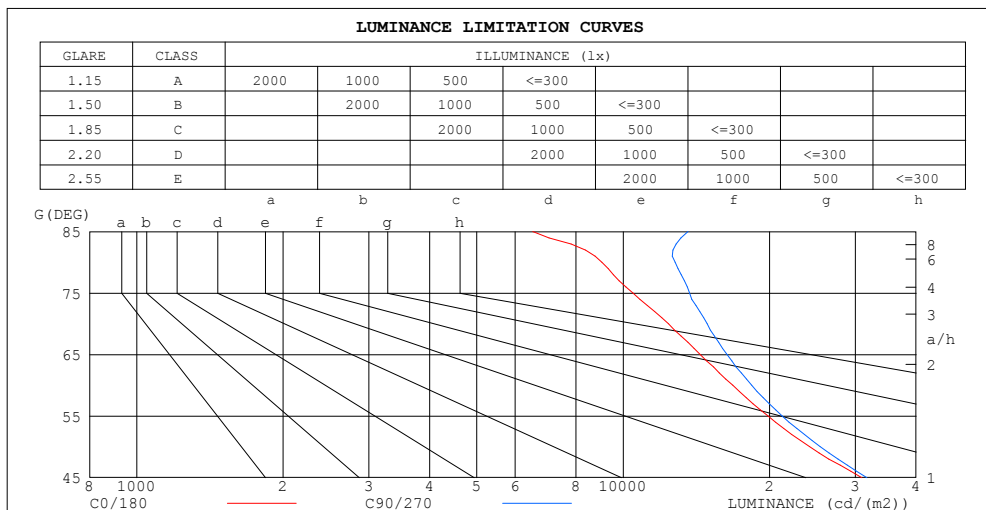
C Range: 0 - 360DEG  
C Interval: 30.0DEG  
Test Speed: HIGH  
Temperature: 25.3DEG  
Operators: LYH  
Test Date: 2024-07-18

γ Range: 0 - 180DEG  
γ Interval: 1.0DEG  
Test System: EVERFINE GO-2000B\_V1 SYSTEM V2.0.269  
Humidity: 65.0%  
Test Distance: 10.000m [K=1.0000]  
Remarks:

### ZONAL FLUX DIAGRAM AND LUMINANCE LIMITATION CURVES

ZONAL FLUX DIAGRAM:

$\gamma$	C0	C45	C90	C135	C180	C225	C270	C315	$\gamma$	$\Phi$ zone	$\Phi$ total	%lum, lamp
10	913.1	863.7	789.2	718.4	698.4	735.0	807.8	880.8	0- 10	78.33	78.33	6.29,6.29
20	864.2	797.1	686.7	578.8	545.1	601.6	717.1	827.0	10- 20	212.5	290.8	23.4,23.4
30	603.6	592.9	534.2	447.5	423.5	461.5	547.2	604.8	20- 30	286.0	576.8	46.3,46.3
40	311.7	318.9	310.3	268.5	252.7	275.5	317.1	324.7	30- 40	254.0	830.8	66.8,66.8
50	155.3	161.7	163.4	147.4	138.1	148.6	165.8	165.4	40- 50	167.4	998.2	80.2,80.2
60	84.01	88.54	91.88	85.29	77.82	83.20	91.91	89.67	50- 60	104.8	1103	88.6,88.6
70	42.39	46.87	50.90	46.19	40.37	43.57	49.32	45.89	60- 70	64.00	1167	93.8,93.8
80	15.71	19.18	22.20	18.58	13.26	16.11	19.54	16.91	70- 80	32.41	1199	96.4,96.4
90	4.198	4.320	4.548	4.298	1.710	1.834	1.994	1.663	80- 90	9.111	1209	97.1,97.1
100	4.522	4.710	5.028	4.716	2.465	2.564	2.626	2.264	90-100	3.599	1212	97.4,97.4
110	4.996	5.221	5.608	5.374	3.569	3.602	3.461	3.150	100-110	4.187	1216	97.7,97.7
120	5.619	5.907	6.395	6.331	4.867	4.809	4.534	4.204	110-120	4.784	1221	98.1,98.1
130	6.505	6.793	7.349	7.451	6.140	6.042	5.725	5.387	120-130	5.255	1226	98.5,98.5
140	7.534	7.779	8.291	8.508	7.318	7.217	6.923	6.615	130-140	5.395	1232	99,99
150	8.595	8.711	9.089	9.323	8.260	8.216	7.990	7.751	140-150	5.030	1237	99.4,99.4
160	9.568	9.528	9.732	9.809	8.958	9.011	8.895	8.715	150-160	4.106	1241	99.7,99.7
170	10.31	10.16	10.24	10.10	9.832	9.794	9.743	9.557	160-170	2.716	1244	99.9,99.9
180	10.51	10.42	10.42	10.21	10.53	10.40	10.37	10.21	170-180	0.9659	1245	100,100
DEG	LUMINOUS INTENSITY:cd									UNIT:lm		



LUMINANCE cd/(m2)		
G (DEG)	C0/180	C90/270
85	6522	13585
80	9047	12787
75	10468	13696
70	12394	14881
65	14392	16359
60	16802	18375
55	19841	21227
50	24161	25426
45	30944	31677

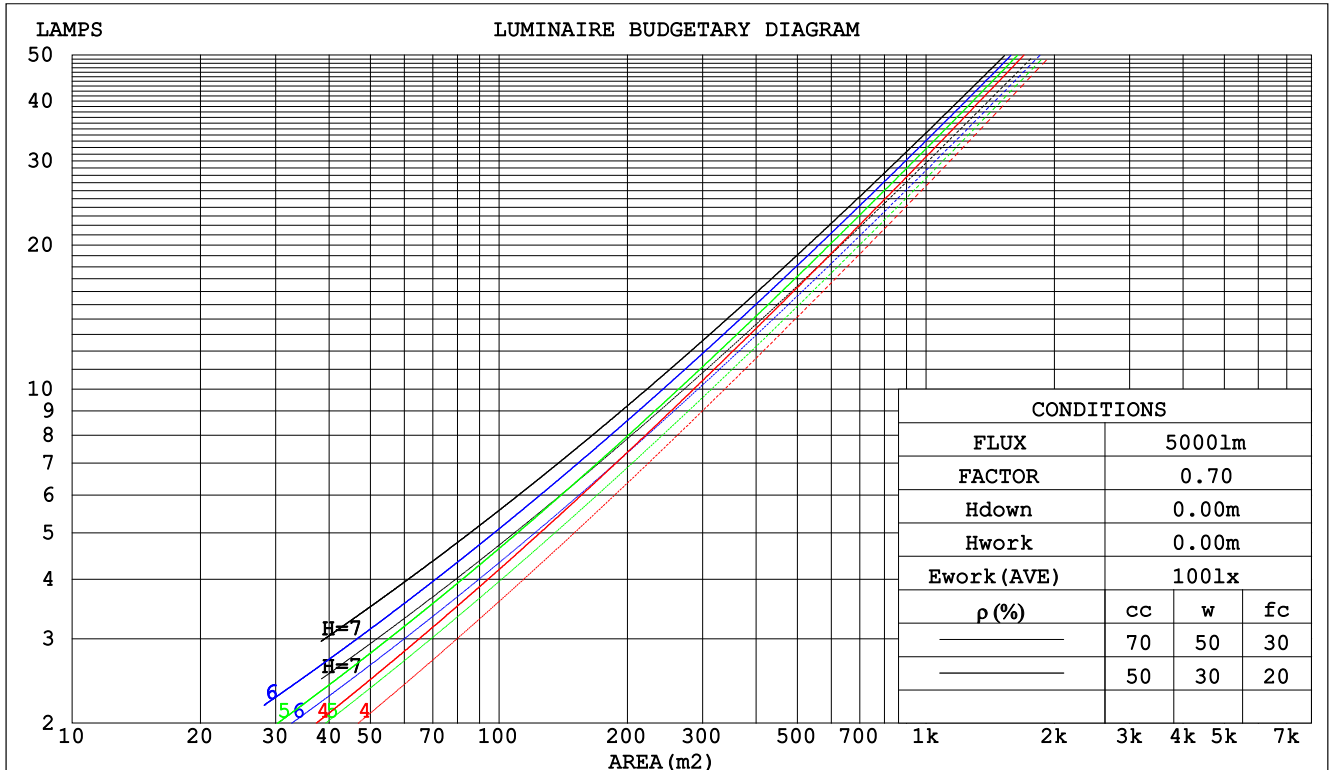
C Range: 0 - 360DEG  
C Interval: 30.0DEG  
Test Speed: HIGH  
Temperature:25.3DEG  
Operators:LYH  
Test Date:2024-07-18

$\gamma$  Range: 0 - 180DEG  
 $\gamma$  Interval: 1.0DEG  
Test System:EVERFINE GO-2000B\_V1 SYSTEM V2.0.269  
Humidity:65.0%  
Test Distance:10.000m [K=1.0000]  
Remarks:

## CU AND LUMINAIRE BUDGETARY ESTIMATE DIAGRAM

Test:U:24.00V I:0.7661A P:18.39W PF:1.000 Lamp Flux:1244.63x1 lm		
NAME: SFW20-24V-3535-24-CC-3000K-80-60	TYPE:	WEIGHT:
DIM.: Length=1m	SPEC.:	SERIAL No.:
MFR.:	SUR.:	PROTECTION ANGLE:

pcc	80%			70%			50%			30%			10%			0
pw	50%	30%	10%	50%	30%	10%	50%	30%	10%	50%	30%	10%	50%	30%	10%	0
pfc	20%			20%			20%			20%			20%			0
RCR	Coefficients of Utilization(CU)															
RCR:Room Cavity Ratio																
0.0	1.18	1.18	1.18	1.15	1.15	1.15	1.10	1.10	1.10	1.04	1.04	1.04	.99	.99	.99	.97
1.0	1.07	1.04	1.01	1.04	1.01	.99	.00	.97	.95	.95	.94	.92	.92	.90	.89	.86
2.0	.97	.91	.87	.94	.90	.85	.91	.87	.83	.87	.84	.81	.84	.81	.79	.77
3.0	.87	.81	.76	.86	.80	.75	.83	.77	.73	.80	.75	.72	.77	.73	.70	.68
4.0	.80	.73	.67	.78	.72	.67	.76	.70	.65	.73	.68	.64	.71	.67	.63	.61
5.0	.73	.66	.60	.72	.65	.60	.69	.63	.59	.67	.62	.58	.65	.61	.57	.55
6.0	.67	.60	.54	.66	.59	.54	.64	.58	.53	.62	.57	.53	.61	.56	.52	.50
7.0	.62	.55	.49	.61	.54	.49	.59	.53	.49	.58	.52	.48	.56	.51	.48	.46
8.0	.57	.50	.45	.57	.50	.45	.55	.49	.45	.54	.48	.44	.53	.48	.44	.42
9.0	.53	.46	.42	.53	.46	.41	.52	.45	.41	.50	.45	.41	.49	.44	.40	.39
10.0	.50	.43	.38	.49	.43	.38	.48	.42	.38	.47	.42	.38	.46	.41	.38	.36



C Range: 0 - 360DEG  
C Interval: 30.0DEG  
Test Speed: HIGH  
Temperature:25.3DEG  
Operators:LYH  
Test Date:2024-07-18

γ Range: 0 - 180DEG  
γ Interval: 1.0DEG  
Test System:EVERFINE GO-2000B\_V1 SYSTEM V2.0.269  
Humidity:65.0%  
Test Distance:10.000m [K=1.0000]  
Remarks:

## WEC AND CCEC

Test:U:24.00V I:0.7661A P:18.39W PF:1.000 Lamp Flux:1244.63x1 lm					
NAME: SFW20-24V-3535-24-CC-3000K-80-60			TYPE:		WEIGHT:
DIM.: Length=1m			SPEC.:		SERIAL No.:
MFR.:			SUR.:		PROTECTION ANGLE:

pcc	80%			70%			50%			30%			10%			0
pw	50%	30%	10%	50%	30%	10%	50%	30%	10%	50%	30%	10%	50%	30%	10%	0
pfc	20%			20%			20%			20%			20%			0
RCR	RCR:Room Cavity Ratio						Wall Exitance Coefficients(WEC)									
0.0																
1.0	.238	.135	.043	.230	.131	.042	.215	.124	.039	.202	.117	.037	.190	.110	.035	
2.0	.227	.124	.038	.220	.121	.037	.207	.115	.036	.196	.110	.034	.185	.105	.033	
3.0	.214	.114	.034	.208	.111	.033	.197	.107	.032	.186	.102	.031	.177	.098	.030	
4.0	.201	.104	.031	.195	.102	.030	.186	.098	.029	.176	.095	.029	.168	.091	.028	
5.0	.188	.096	.028	.184	.094	.027	.175	.091	.027	.167	.088	.026	.159	.085	.026	
6.0	.177	.089	.025	.173	.087	.025	.165	.085	.025	.158	.082	.024	.151	.080	.024	
7.0	.167	.083	.023	.163	.081	.023	.156	.079	.023	.150	.077	.022	.144	.075	.022	
8.0	.158	.077	.022	.155	.076	.022	.148	.074	.021	.142	.072	.021	.137	.070	.020	
9.0	.150	.072	.020	.147	.071	.020	.141	.070	.020	.136	.068	.019	.130	.066	.019	
10.0	.142	.068	.019	.139	.067	.019	.134	.066	.019	.129	.064	.018	.125	.063	.018	

pcc	80%			70%			50%			30%			10%			0	
pw	50%	30%	10%	50%	30%	10%	50%	30%	10%	50%	30%	10%	50%	30%	10%	0	
pfc	20%			20%			20%			20%			20%			0	
RCR	RCR:Room Cavity Ratio						Ceiling Cavity Exitance Coefficients(CCEC)										
0.0	.213	.213	.213	.182	.182	.182	.124	.124	.124	.071	.071	.071	.023	.023	.023		
1.0	.198	.179	.162	.169	.154	.140	.116	.106	.097	.067	.061	.056	.021	.020	.018		
2.0	.186	.155	.128	.159	.133	.111	.109	.092	.077	.063	.054	.045	.020	.017	.015		
3.0	.176	.136	.105	.151	.118	.091	.104	.082	.064	.060	.048	.038	.019	.016	.012		
4.0	.167	.123	.088	.144	.106	.077	.099	.074	.054	.057	.043	.032	.018	.014	.010		
5.0	.160	.112	.076	.137	.097	.066	.094	.067	.047	.055	.040	.028	.018	.013	.009		
6.0	.153	.103	.067	.131	.089	.058	.091	.062	.041	.053	.037	.025	.017	.012	.008		
7.0	.146	.096	.060	.126	.083	.053	.087	.058	.037	.051	.034	.022	.016	.011	.007		
8.0	.140	.090	.055	.121	.078	.048	.084	.055	.034	.049	.032	.020	.016	.011	.007		
9.0	.135	.085	.051	.116	.074	.044	.081	.052	.032	.047	.031	.019	.015	.010	.006		
10.0	.130	.081	.048	.112	.070	.042	.078	.049	.030	.045	.029	.018	.015	.010	.006		

C Range: 0 - 360DEG  
 C Interval: 30.0DEG  
 Test Speed: HIGH  
 Temperature:25.3DEG  
 Operators:LYH  
 Test Date:2024-07-18

γ Range: 0 - 180DEG  
 γ Interval: 1.0DEG  
 Test System:EVERFINE GO-2000B\_V1 SYSTEM V2.0.269  
 Humidity:65.0%  
 Test Distance:10.000m [K=1.0000]  
 Remarks:

## Uncorrected UGR Table

Test:U:24.00V I:0.7661A P:18.39W PF:1.000 Lamp Flux:1244.63x1 lm											
NAME: SFW20-24V-3535-24-CC-3000K-80-60					TYPE:			WEIGHT:			
DIM.: Length=1m					SPEC.:			SERIAL No.:			
MFR.:					SUR.:			PROTECTION ANGLE:			
ceiling/cavity	0.7	0.7	0.5	0.5	0.3	0.7	0.7	0.5	0.5	0.3	
walls	0.5	0.3	0.5	0.3	0.3	0.5	0.3	0.5	0.3	0.3	
working plane	0.2	0.2	0.2	0.2	0.2	0.2	0.2	0.2	0.2	0.2	
Room dimensions		Viewed crosswise					Viewed endwise				
x = 2H y = 2H	22.1	23.3	22.4	23.5	23.7	22.3	23.5	22.5	23.7	23.9	
	3H	22.7	23.8	23.0	24.0	24.3	23.0	24.1	23.3	24.4	24.6
	4H	22.9	23.9	23.2	24.2	24.5	23.3	24.4	23.7	24.6	24.9
	6H	23.0	24.0	23.4	24.3	24.6	23.6	24.6	23.9	24.9	25.2
	8H	23.0	24.0	23.4	24.3	24.6	23.7	24.6	24.0	24.9	25.3
	12H	23.0	23.9	23.4	24.3	24.6	23.8	24.7	24.1	25.0	25.3
4H	2H	22.3	23.3	22.6	23.6	23.9	22.5	23.5	22.8	23.8	24.1
	3H	23.1	24.0	23.5	24.3	24.7	23.4	24.3	23.8	24.6	25.0
	4H	23.4	24.2	23.8	24.6	25.0	23.8	24.7	24.2	25.0	25.4
	6H	23.6	24.3	24.1	24.7	25.2	24.2	25.0	24.7	25.3	25.8
	8H	23.7	24.4	24.1	24.8	25.2	24.4	25.1	24.8	25.5	25.9
	12H	23.7	24.3	24.2	24.8	25.2	24.5	25.1	25.0	25.6	26.0
8H	4H	23.5	24.2	24.0	24.6	25.0	23.9	24.6	24.4	25.0	25.5
	6H	23.9	24.4	24.3	24.9	25.3	24.4	25.0	24.9	25.4	25.9
	8H	24.0	24.5	24.5	24.9	25.5	24.7	25.2	25.2	25.6	26.1
	12H	24.1	24.5	24.6	25.0	25.5	24.9	25.3	25.4	25.8	26.3
12H	4H	23.5	24.1	24.0	24.6	25.0	23.9	24.5	24.4	25.0	25.4
	6H	23.9	24.4	24.4	24.9	25.4	24.5	24.9	25.0	25.4	25.9
	8H	24.1	24.5	24.6	25.0	25.5	24.7	25.1	25.2	25.6	26.2
Variations with the observer position at spacings:											
S = 1.0H	+ 0.6 / - 0.8					+ 0.5 / - 0.7					
1.5H	+ 0.8 / - 0.6					+ 0.6 / - 0.4					
2.0H	+ 1.1 / - 0.8					+ 1.0 / - 0.6					

CIE Pub.117 Corrected 1245 lm Total Lamp Luminous Flux. (8log(F/F0) = 0.8)

C Range: 0 - 360DEG  
 C Interval: 30.0DEG  
 Test Speed: HIGH  
 Temperature: 25.3DEG  
 Operators: LYH  
 Test Date: 2024-07-18

γ Range: 0 - 180DEG  
 γ Interval: 1.0DEG  
 Test System: EVERFINE GO-2000B\_V1 SYSTEM V2.0.269  
 Humidity: 65.0%  
 Test Distance: 10.000m [K=1.0000]  
 Remarks:

## UTILIZATION FACTORS TABLE

Test:U:24.00V I:0.7661A P:18.39W PF:1.000 Lamp Flux:1244.63x1 lm		
NAME: SFW20-24V-3535-24-CC-3000K-80-60	TYPE:	WEIGHT:
DIM.: Length=1m	SPEC.:	SERIAL No.:
MFR.:	SUR.:	PROTECTION ANGLE:

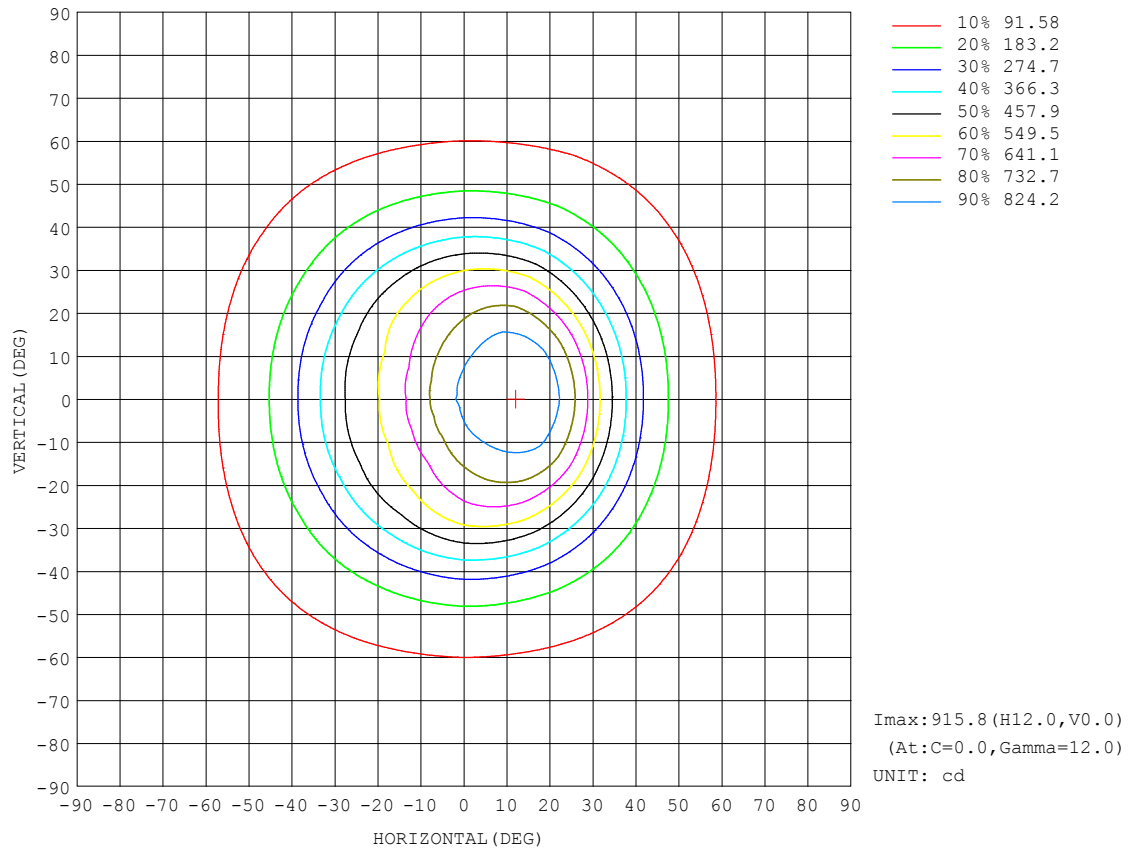
REFLECTANCE										
Ceiling	0.8	0.8	0.8	0.7	0.7	0.7	0.5	0.5	0.5	0
Walls	0.7	0.5	0.3	0.7	0.5	0.3	0.7	0.5	0.3	0
Working plane	0.2	0.2	0.2	0.2	0.2	0.2	0.2	0.2	0.2	0
ROOM INDEX	UTILIZATION FACTORS (PERCENT) $k(RI) \times RCR = 5$									
$k = 0.60$	71	62	56	70	61	56	69	61	56	51
0.80	80	71	65	79	71	65	77	70	65	59
1.00	87	78	73	86	78	72	83	78	72	66
1.25	92	85	79	91	84	79	88	82	78	72
1.50	96	89	84	95	88	83	92	86	82	76
2.00	101	95	90	99	94	89	96	91	87	80
2.50	104	98	94	102	97	93	98	94	90	83
3.00	106	101	97	104	100	96	100	96	93	85
4.00	109	105	102	107	103	100	102	99	97	88
5.00	111	108	105	109	105	103	104	101	99	90
ROOM INDEX	UF(total)									Direct
According to DIN EN 13032-2 2004			Suspended					SHRNOM = 1.25		

C Range: 0 - 360DEG  
 C Interval: 30.0DEG  
 Test Speed: HIGH  
 Temperature: 25.3DEG  
 Operators: LYH  
 Test Date: 2024-07-18

$\gamma$  Range: 0 - 180DEG  
 $\gamma$  Interval: 1.0DEG  
 Test System: EVERFINE GO-2000B\_V1 SYSTEM V2.0.269  
 Humidity: 65.0%  
 Test Distance: 10.000m [K=1.0000]  
 Remarks:

## ISOCANDELA DIAGRAM

Test:U:24.00V I:0.7661A P:18.39W PF:1.000 Lamp Flux:1244.63x1 lm		
NAME: SFW20-24V-3535-24-CC-3000K-80-60	TYPE:	WEIGHT:
DIM.: Length=1m	SPEC.:	SERIAL No.:
MFR.:	SUR.:	PROTECTION ANGLE:

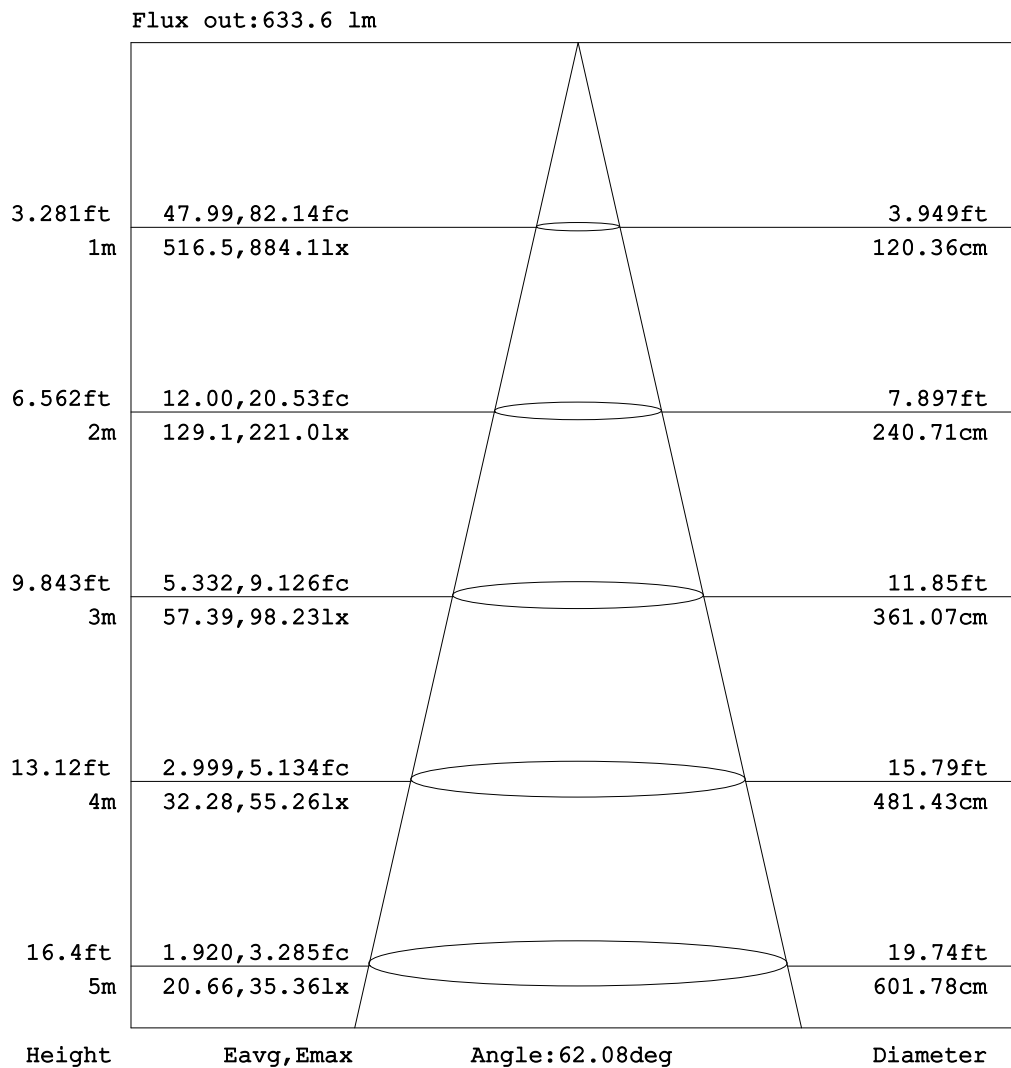


C Range: 0 - 360DEG  
C Interval: 30.0DEG  
Test Speed: HIGH  
Temperature:25.3DEG  
Operators:LYH  
Test Date:2024-07-18

$\gamma$  Range: 0 - 180DEG  
 $\gamma$  Interval: 1.0DEG  
Test System:EVERFINE GO-2000B\_V1 SYSTEM V2.0.269  
Humidity:65.0%  
Test Distance:10.000m [K=1.0000]  
Remarks:

## AAI Figure

Test:U:24.00V I:0.7661A P:18.39W PF:1.000 Lamp Flux:1244.63x1 lm		
NAME: SFW20-24V-3535-24-CC-3000K-80-60	TYPE:	WEIGHT:
DIM.: Length=1m	SPEC.:	SERIAL No.:
MFR.:	SUR.:	PROTECTION ANGLE:



Note:The Curves indicate the illuminated area and the average illumination when the luminaire is at different distance.

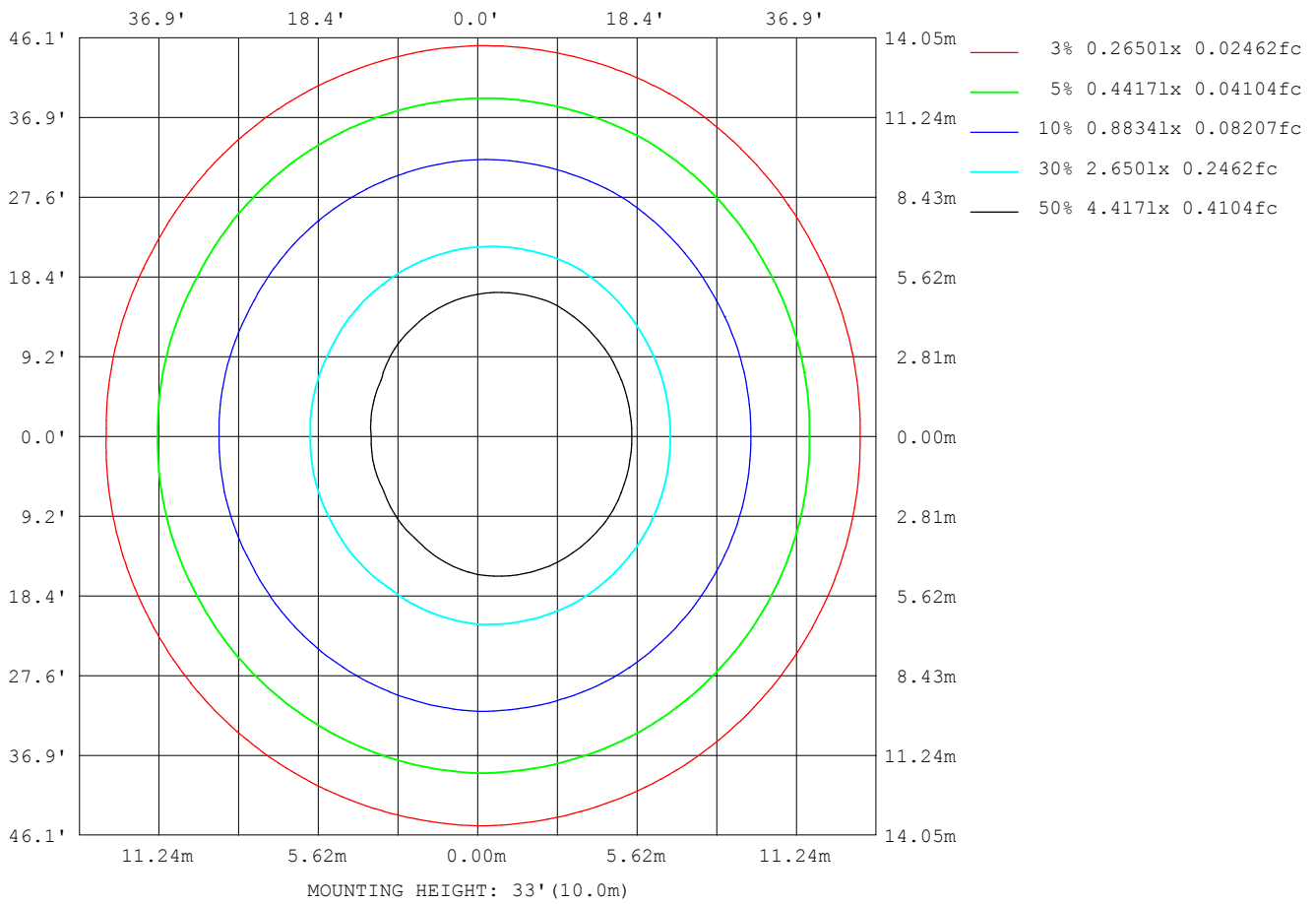
C Range: 0 - 360DEG  
C Interval: 30.0DEG  
Test Speed: HIGH  
Temperature:25.3DEG  
Operators:LYH  
Test Date:2024-07-18

$\gamma$  Range: 0 - 180DEG  
 $\gamma$  Interval: 1.0DEG  
Test System:EVERFINE GO-2000B\_V1 SYSTEM V2.0.269  
Humidity:65.0%  
Test Distance:10.000m [K=1.0000]  
Remarks:



### ISOLUX DIAGRAM

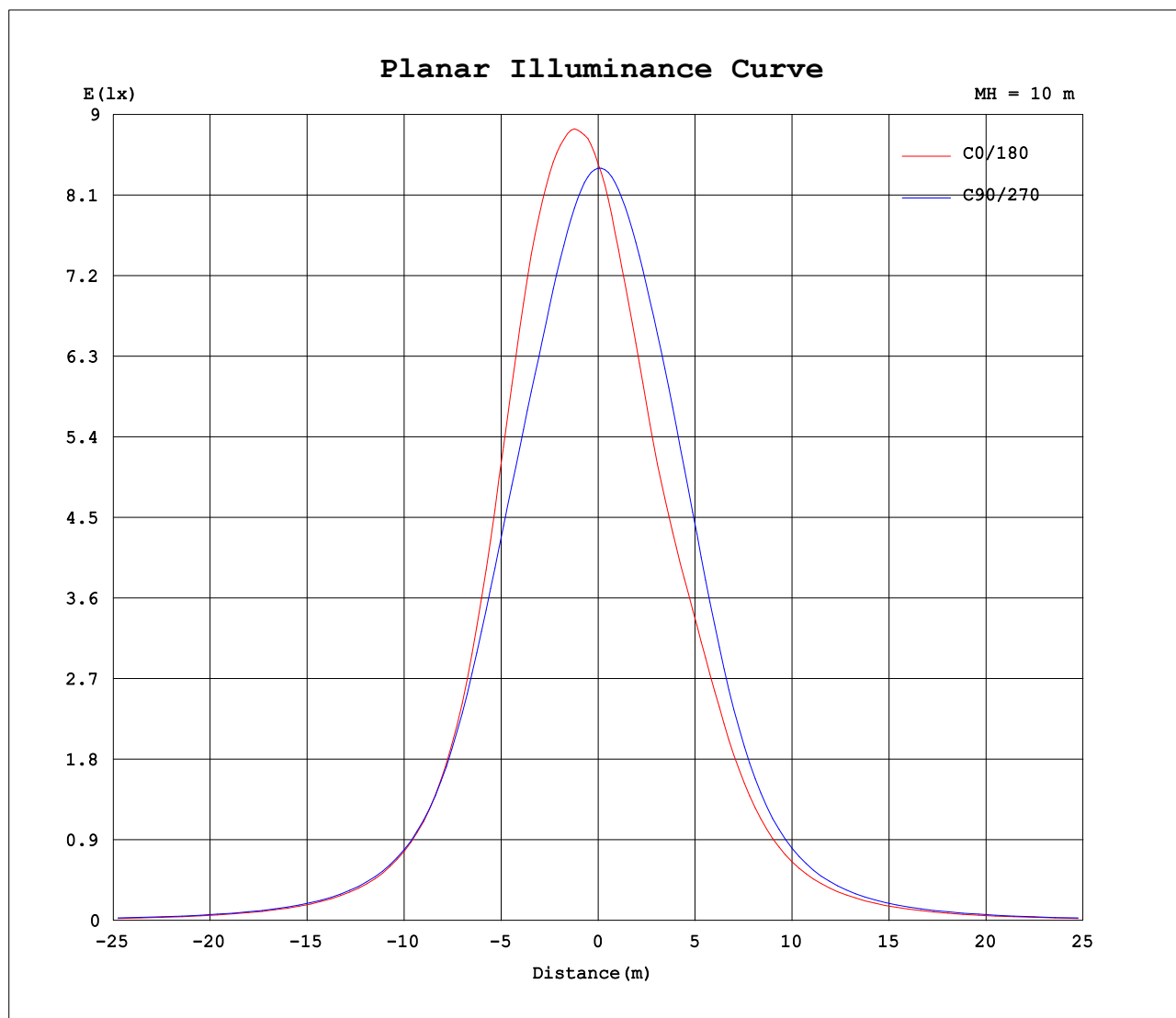
Test:U:24.00V I:0.7661A P:18.39W PF:1.000 Lamp Flux:1244.63x1 lm		
NAME: SFW20-24V-3535-24-CC-3000K-80-60	TYPE:	WEIGHT:
DIM.: Length=1m	SPEC.:	SERIAL No.:
MFR.:	SUR.:	PROTECTION ANGLE:



C Range: 0 - 360DEG  
C Interval: 30.0DEG  
Test Speed: HIGH  
Temperature: 25.3DEG  
Operators: LYH  
Test Date: 2024-07-18

γ Range: 0 - 180DEG  
γ Interval: 1.0DEG  
Test System: EVERFINE GO-2000B\_V1 SYSTEM V2.0.269  
Humidity: 65.0%  
Test Distance: 10.000m [K=1.0000]  
Remarks:

## Planar Illuminance Curve



C Range: 0 - 360DEG  
C Interval: 30.0DEG  
Test Speed: HIGH  
Temperature: 25.3DEG  
Operators: LYH  
Test Date: 2024-07-18

$\gamma$  Range: 0 - 180DEG  
 $\gamma$  Interval: 1.0DEG  
Test System: EVERFINE GO-2000B\_V1 SYSTEM V2.0.269  
Humidity: 65.0%  
Test Distance: 10.000m [K=1.0000]  
Remarks:

## LUMINOUS DISTRIBUTION INTENSITY DATA

Test:U:24.00V I:0.7661A P:18.39W PF:1.000 Lamp Flux:1244.63x1 lm		
NAME: SFW20-24V-3535-24-CC-3000K-80-60	TYPE:	WEIGHT:
DIM.: Length=1m	SPEC.:	SERIAL No.:
MFR.:	SUR.:	PROTECTION ANGLE:

Table--1

UNIT: cd

C (DEG) γ (DEG)	0	30	60	90	120	150	180	210	240	270	300	330							
0	846	842	842	840	839	840	846	842	842	840	839	840							
5	890	876	853	825	797	779	777	784	810	834	863	879							
10	913	889	838	789	734	703	698	713	757	808	862	899							
15	910	876	808	741	667	625	615	638	699	768	846	893							
20	864	835	759	687	603	555	545	566	637	717	803	851							
25	756	746	687	623	539	497	490	507	568	646	723	753							
30	604	607	579	534	463	432	423	439	484	547	603	607							
35	442	449	447	422	372	343	337	350	387	429	463	449							
40	312	315	323	310	280	257	253	262	289	317	333	317							
45	219	222	229	224	206	190	186	192	211	229	236	223							
50	155	160	164	163	152	142	138	142	155	166	170	160							
55	114	117	121	122	115	108	103	107	115	123	125	118							
60	84.0	86.8	90.3	91.9	87.9	82.6	77.8	79.6	86.8	91.9	93.0	86.3							
65	60.8	63.7	67.3	69.1	66.1	61.7	57.8	58.7	64.4	68.4	68.6	62.4							
70	42.4	45.0	48.8	50.9	48.0	44.4	40.4	41.2	45.9	49.3	48.7	43.0							
75	27.1	30.1	33.4	35.4	32.5	29.7	25.3	26.7	30.4	33.2	32.1	27.6							
80	15.7	17.6	20.7	22.2	20.0	17.2	13.3	14.5	17.8	19.5	18.9	14.9							
85	5.68	7.08	10.4	11.8	9.79	6.48	3.18	3.99	7.57	8.71	8.07	4.13							
90	4.20	4.24	4.40	4.55	4.39	4.21	1.71	1.77	1.90	1.99	1.76	1.57							
95	4.33	4.44	4.55	4.78	4.55	4.39	2.06	2.06	2.23	2.24	2.05	1.80							
100	4.52	4.64	4.78	5.03	4.81	4.62	2.47	2.48	2.65	2.63	2.40	2.13							
105	4.74	4.87	5.03	5.30	5.11	4.91	2.98	2.99	3.11	3.02	2.83	2.54							
110	5.00	5.13	5.31	5.61	5.47	5.28	3.57	3.57	3.64	3.46	3.29	3.01							
115	5.27	5.42	5.64	5.98	5.90	5.73	4.21	4.20	4.20	3.97	3.80	3.51							
120	5.62	5.78	6.04	6.39	6.39	6.27	4.87	4.82	4.80	4.53	4.35	4.06							
125	6.03	6.19	6.47	6.86	6.91	6.85	5.50	5.43	5.40	5.12	4.93	4.65							
130	6.50	6.66	6.93	7.35	7.45	7.46	6.14	6.07	6.01	5.73	5.53	5.25							
135	7.01	7.14	7.41	7.83	7.97	8.05	6.76	6.68	6.61	6.34	6.13	5.88							
140	7.53	7.66	7.90	8.29	8.45	8.57	7.32	7.25	7.19	6.92	6.72	6.51							
145	8.08	8.18	8.36	8.70	8.89	9.03	7.82	7.76	7.72	7.47	7.29	7.12							
150	8.59	8.66	8.76	9.09	9.25	9.39	8.26	8.22	8.21	7.99	7.82	7.68							
155	9.10	9.11	9.16	9.43	9.54	9.65	8.60	8.60	8.64	8.44	8.33	8.21							
160	9.57	9.54	9.51	9.73	9.78	9.84	8.96	8.97	9.05	8.89	8.77	8.66							
165	9.99	9.93	9.83	10.00	9.96	9.97	9.35	9.34	9.46	9.33	9.22	9.09							
170	10.3	10.2	10.1	10.2	10.1	10.1	9.83	9.74	9.85	9.74	9.64	9.47							
175	10.5	10.4	10.3	10.4	10.2	10.1	10.2	10.1	10.2	10.1	10.0	9.80							
180	10.5	10.4	10.4	10.4	10.3	10.1	10.5	10.4	10.4	10.4	10.3	10.1							

C Range: 0 - 360DEG  
C Interval: 30.0DEG  
Test Speed: HIGH  
Temperature:25.3DEG  
Operators:LYH  
Test Date:2024-07-18

γ Range: 0 - 180DEG  
γ Interval: 1.0DEG  
Test System:EVERFINE GO-2000B\_V1 SYSTEM V2.0.269  
Humidity:65.0%  
Test Distance:10.000m [K=1.0000]  
Remarks:

Photometric Data Table [cd]

G/C	0.0	30.0	60.0	90.0	120.0	150.0	180.0	210.0	240.0	270.0
0.0	845.7	842.2	841.5	840.1	839.1	840.1	845.7	842.2	841.5	840.1
3.0	876.7	866.6	851.1	833.9	816.2	807.5	809.3	811.6	825.3	838.8
6.0	897.4	879.6	852.4	819.4	785.0	763.9	761.9	769.8	800.9	829.8
9.0	911.6	888.6	842.7	798.3	747.0	718.4	714.5	728.5	768.3	814.4
12.0	915.8	885.5	828.1	771.9	706.4	671.8	665.0	683.9	734.1	793.2
15.0	909.8	875.9	807.9	740.7	666.7	625.4	614.7	637.7	698.5	767.8
18.0	889.8	856.2	780.5	709.1	627.3	581.6	570.0	593.2	661.5	739.4
21.0	847.1	820.9	746.9	674.3	591.3	541.6	533.4	553.5	624.0	704.9
24.0	783.4	769.1	704.4	636.8	552.6	508.6	500.9	520.1	582.8	662.2
27.0	699.7	694.2	648.2	589.1	510.7	472.4	465.7	481.9	536.7	610.1
30.0	603.6	606.7	579.1	534.2	462.6	432.4	423.5	438.9	484.2	547.2
33.0	505.5	511.1	500.6	468.3	409.9	379.6	372.8	387.4	427.0	476.7
36.0	412.9	420.3	420.3	398.8	353.1	324.8	319.1	331.4	366.0	405.6
39.0	334.7	339.6	345.6	330.9	297.7	273.3	268.2	277.9	307.6	337.4
42.0	269.4	273.5	280.9	272.8	248.3	227.2	223.6	230.9	255.4	277.7
45.0	218.8	222.1	229.0	224.0	206.3	189.6	186.2	192.1	211.1	229.2
48.0	177.2	181.2	186.3	185.1	171.2	159.5	155.3	159.4	175.3	187.8
51.0	145.7	149.7	153.8	153.9	144.4	134.8	130.3	134.0	146.1	155.9
54.0	121.0	124.3	128.0	128.9	121.7	114.5	109.5	112.9	122.4	130.4
57.0	100.7	103.9	107.3	108.8	103.3	97.57	92.21	95.09	103.1	109.5
60.0	84.01	86.78	90.30	91.88	87.94	82.64	77.82	79.60	86.80	91.91
63.0	69.61	72.22	75.80	77.46	74.19	69.48	65.28	66.62	72.74	77.29
66.0	56.85	59.60	63.35	65.13	62.06	58.02	54.08	54.93	60.42	64.40
69.0	45.72	48.38	52.19	54.12	51.36	47.51	43.60	44.48	49.37	52.83
72.0	35.90	38.51	42.28	44.44	41.39	38.07	34.08	35.09	39.32	42.61
75.0	27.09	30.05	33.39	35.45	32.49	29.70	25.31	26.70	30.36	33.19
78.0	19.86	22.23	25.45	27.39	24.73	21.82	17.62	18.96	22.52	24.65
81.0	13.70	15.50	18.54	19.72	17.92	14.95	11.21	12.27	15.62	17.15
84.0	7.363	9.335	12.38	13.74	11.75	8.675	5.042	5.964	9.551	10.68
87.0	4.582	4.609	5.916	8.228	5.378	4.528	2.032	2.100	3.504	5.224
90.0	4.198	4.242	4.399	4.548	4.386	4.211	1.710	1.772	1.897	1.994
93.0	4.248	4.367	4.460	4.679	4.460	4.317	1.910	1.927	2.084	2.114
96.0	4.366	4.479	4.603	4.829	4.615	4.429	2.122	2.139	2.309	2.314
99.0	4.497	4.598	4.728	4.984	4.747	4.567	2.378	2.401	2.558	2.551
102.0	4.609	4.729	4.878	5.147	4.915	4.723	2.659	2.669	2.821	2.781
105.0	4.740	4.866	5.033	5.303	5.108	4.910	2.983	2.993	3.114	3.025
108.0	4.877	5.010	5.196	5.484	5.308	5.122	3.326	3.318	3.414	3.274
111.0	5.034	5.178	5.383	5.677	5.538	5.359	3.700	3.686	3.744	3.555
114.0	5.208	5.347	5.582	5.896	5.807	5.634	4.081	4.054	4.087	3.867
117.0	5.407	5.552	5.819	6.126	6.087	5.946	4.468	4.428	4.437	4.191
120.0	5.619	5.777	6.037	6.395	6.393	6.270	4.867	4.821	4.798	4.534
123.0	5.863	6.014	6.299	6.669	6.699	6.626	5.247	5.208	5.160	4.896
126.0	6.125	6.282	6.561	6.956	7.017	6.969	5.628	5.569	5.522	5.239
129.0	6.411	6.563	6.829	7.243	7.335	7.331	6.015	5.956	5.896	5.613
132.0	6.705	6.844	7.123	7.542	7.665	7.698	6.395	6.330	6.258	5.975
135.0	7.010	7.143	7.410	7.829	7.971	8.048	6.757	6.680	6.613	6.337
138.0	7.322	7.461	7.709	8.110	8.271	8.372	7.100	7.036	6.957	6.699
141.0	7.646	7.761	7.990	8.391	8.539	8.672	7.424	7.366	7.300	7.035
144.0	7.977	8.079	8.264	8.621	8.813	8.946	7.717	7.659	7.618	7.360
147.0	8.289	8.378	8.514	8.871	9.038	9.189	7.998	7.965	7.923	7.684
150.0	8.595	8.659	8.764	9.089	9.250	9.395	8.260	8.221	8.210	7.990
153.0	8.900	8.934	9.013	9.295	9.431	9.563	8.466	8.445	8.472	8.271
156.0	9.194	9.202	9.231	9.488	9.599	9.694	8.671	8.676	8.728	8.533
159.0	9.481	9.464	9.437	9.669	9.731	9.806	8.890	8.895	8.971	8.813
162.0	9.736	9.707	9.643	9.844	9.849	9.894	9.102	9.119	9.221	9.075
165.0	9.986	9.925	9.830	10.000	9.955	9.975	9.352	9.337	9.457	9.331
168.0	10.20	10.11	9.999	10.15	10.06	10.04	9.645	9.581	9.701	9.599
171.0	10.36	10.26	10.15	10.28	10.14	10.11	9.913	9.818	9.925	9.818
174.0	10.45	10.37	10.28	10.38	10.23	10.15	10.16	10.04	10.14	10.04
177.0	10.51	10.44	10.37	10.42	10.26	10.15	10.38	10.24	10.34	10.22
180.0	10.51	10.44	10.41	10.42	10.26	10.15	10.53	10.38	10.41	10.37
G/C	300.0	330.0								
0.0	839.1	840.1								
3.0	855.9	868.4								
6.0	864.4	884.6								
9.0	864.0	897.9								
12.0	858.1	899.0								
15.0	845.8	893.2								
18.0	823.2	871.7								
21.0	790.2	836.3								
24.0	742.3	777.6								
27.0	678.5	699.2								
30.0	602.9	606.6								

C Range: 0 - 360DEG  
 C Interval: 30.0DEG  
 Test Speed: HIGH  
 Temperature: 25.3DEG  
 Operators: LYH  
 Test Date: 2024-07-18

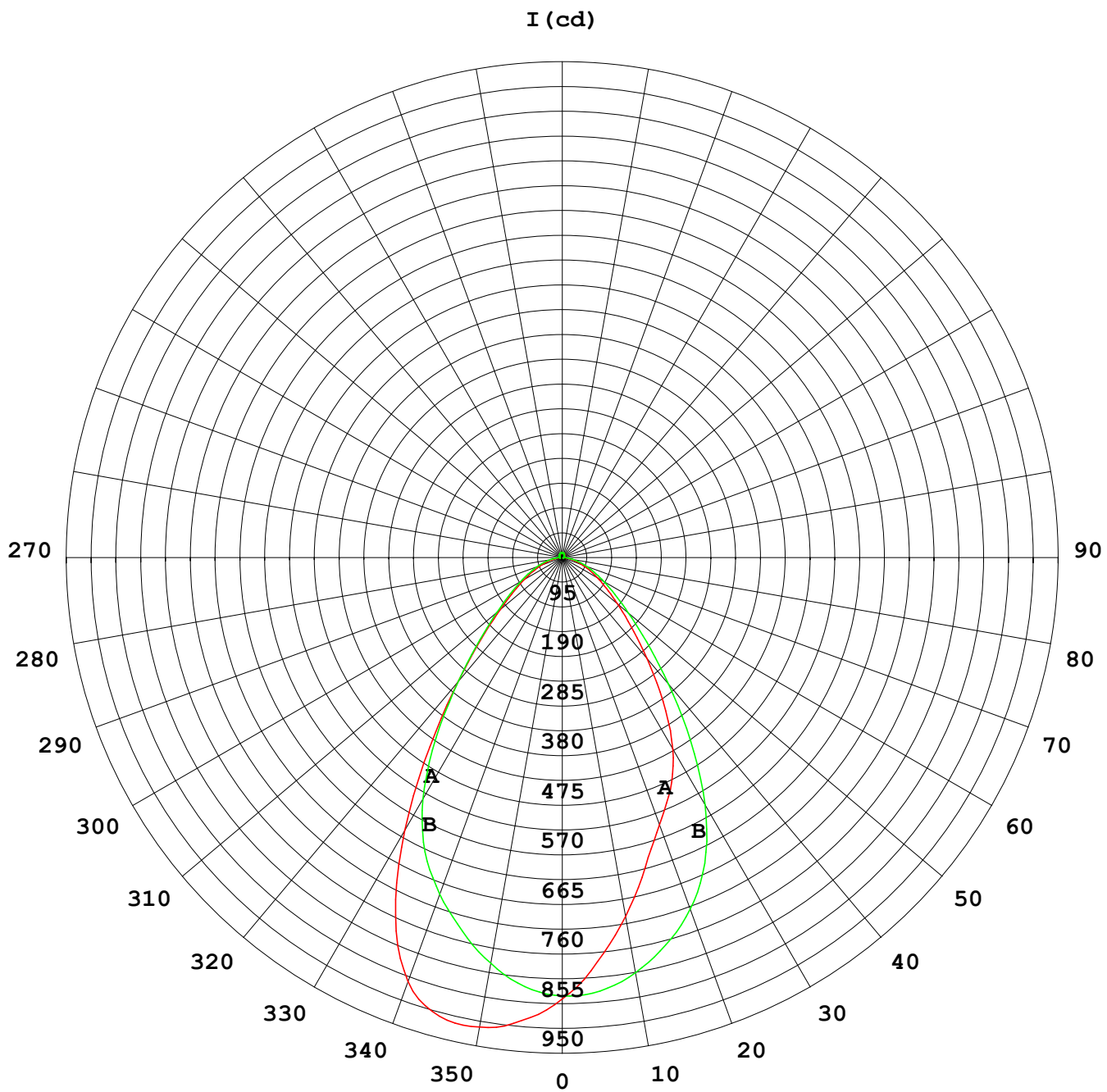
γ Range: 0 - 180DEG  
 γ Interval: 1.0DEG  
 Test System: EVERFINE GO-2000B\_V1 SYSTEM V2.0.269  
 Humidity: 65.0%  
 Test Distance: 10.000m [K=1.0000]  
 Remarks:

## Photometric Data Table [cd]

33.0	519.3	509.9
36.0	435.6	421.7
39.0	355.9	339.5
42.0	290.5	277.4
45.0	236.2	223.2
48.0	193.5	182.6
51.0	159.9	150.9
54.0	132.9	125.0
57.0	111.2	103.5
60.0	93.04	86.29
63.0	77.75	71.14
66.0	64.34	57.91
69.0	52.41	46.63
72.0	41.65	36.14
75.0	32.13	27.61
78.0	23.82	19.78
81.0	16.63	12.77
84.0	10.19	6.479
87.0	3.751	1.976
90.0	1.760	1.566
93.0	1.928	1.671
96.0	2.109	1.852
99.0	2.334	2.052
102.0	2.571	2.295
105.0	2.827	2.538
108.0	3.101	2.819
111.0	3.388	3.106
114.0	3.700	3.411
117.0	4.012	3.735
120.0	4.349	4.060
123.0	4.692	4.409
126.0	5.048	4.771
129.0	5.397	5.139
132.0	5.771	5.507
135.0	6.127	5.875
138.0	6.483	6.262
141.0	6.838	6.642
144.0	7.175	6.992
147.0	7.505	7.360
150.0	7.824	7.678
153.0	8.135	7.996
156.0	8.416	8.302
159.0	8.684	8.564
162.0	8.953	8.832
165.0	9.221	9.094
168.0	9.482	9.319
171.0	9.719	9.543
174.0	9.944	9.743
177.0	10.14	9.924
180.0	10.31	10.11

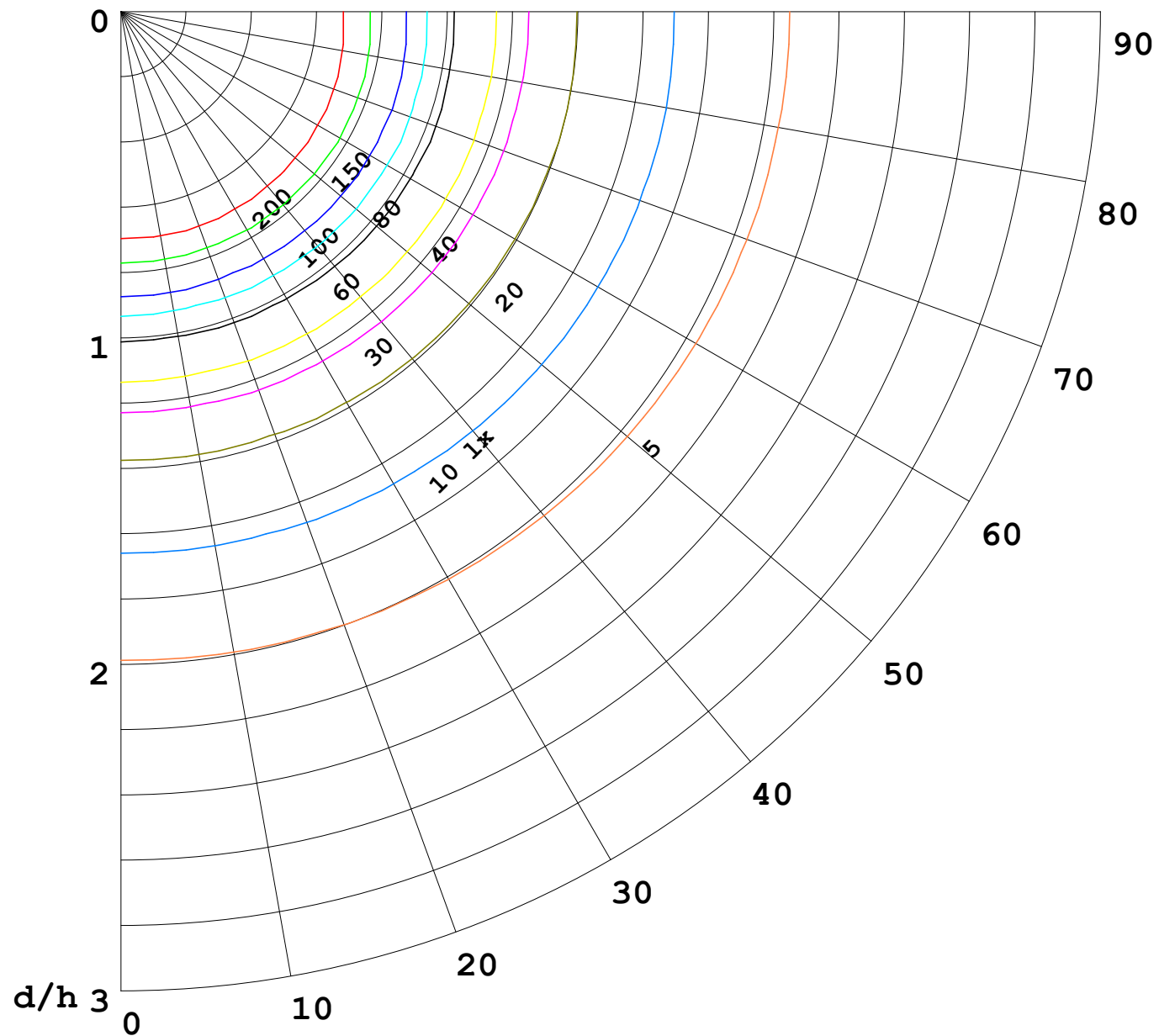
C Range: 0 - 360DEG  
C Interval: 30.0DEG  
Test Speed: HIGH  
Temperature:25.3DEG  
Operators:LYH  
Test Date:2024-07-18

γ Range: 0 - 180DEG  
γ Interval: 1.0DEG  
Test System:EVERFINE GO-2000B\_V1 SYSTEM V2.0.269  
Humidity:65.0%  
Test Distance:10.000m [K=1.0000]  
Remarks:



1000 lm

$\kappa = 1$



F = 5000 lm  
 K = 0.7  
 Hcc = 0.0 m  
 Hfc = 0.0 m  
 Eave = 100 lx

	Pcc	Pw	Pfc
—	70	50	30
—	50	30	20

