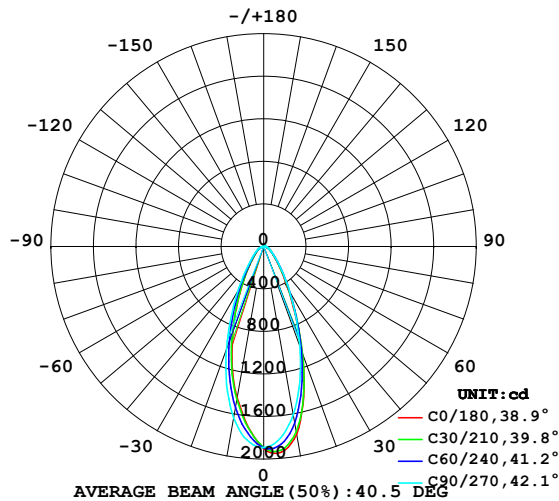


LUMINAIRE PHOTOMETRIC TEST REPORT

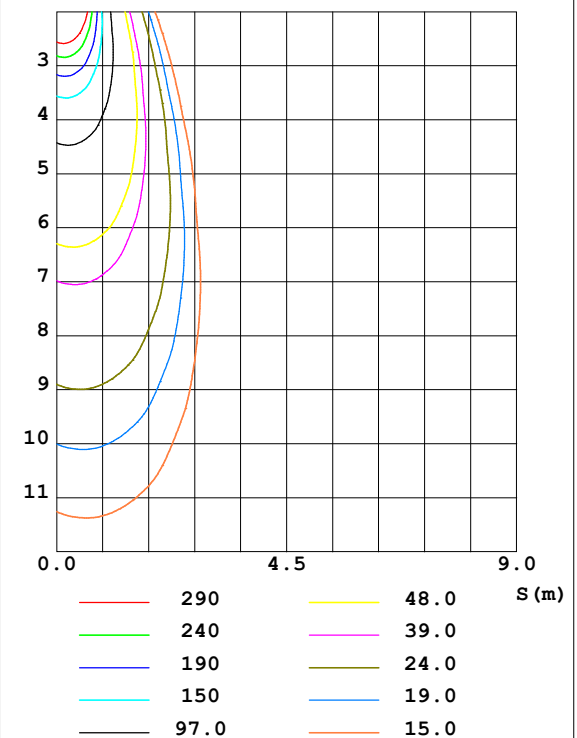
Test:U:24.00V I:0.7853A P:18.85W PF:1.000 Lamp Flux:1357.5x1 lm		
NAME: SFW20-24V-3535-24-CC-3000K-80-38	TYPE:	WEIGHT:
DIM.: Length=1m	SPEC.:	SERIAL No.:
MFR.:	SUR.:	PROTECTION ANGLE:

DATA OF LAMP		PHOTOMETRIC DATA Eff: 72.03 lm/W			
MODEL	3535	I _{max} (cd)	1949	S/MH (C0/180)	0.69
NOMINAL POWER (W)		LOR (%)	100.0	S/MH (C90/270)	0.66
RATED VOLTAGE (V)		TOTAL FLUX (lm)	1357.5	η UP, DN (C0-180)	1.7, 49.1
NOMINAL FLUX (lm)	1357.5	CIE CLASS	DIRECT	η UP, DN (C180-360)	1.3, 47.9
LAMPS INSIDE	1	η up (%)	3.0	CIBSE SHR NOM	0.50
TEST VOLTAGE (V)		η down (%)	97.0	CIBSE SHR MAX	0.70

LUMINOUS INTENSITY DISTRIBUTION DIAGRAM



C0 PLANE ISOLUX DIAGRAM (UNIT:lx)



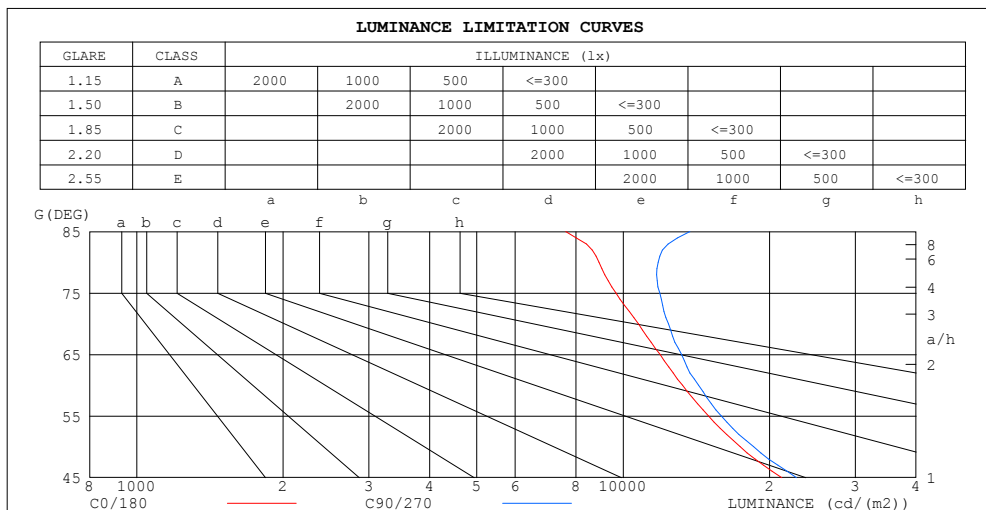
C Range: 0 - 360DEG
C Interval: 30.0DEG
Test Speed: HIGH
Temperature: 25.3DEG
Operators: LYH
Test Date: 2024-07-19

γ Range: 0 - 180DEG
γ Interval: 1.0DEG
Test System: EVERFINE GO-2000B_V1 SYSTEM V2.0.269
Humidity: 65.0%
Test Distance: 10.000m [K=1.0000]
Remarks:

ZONAL FLUX DIAGRAM
AND LUMINANCE LIMITATION CURVES

ZONAL FLUX DIAGRAM:

γ	C0	C45	C90	C135	C180	C225	C270	C315	γ	Φ zone	Φ total	%lum, lamp
10	1793	1725	1607	1470	1443	1498	1636	1753	0- 10	166.8	166.8	12.3,12.3
20	1063	1055	997.4	880.6	845.0	905.0	1026	1087	10- 20	361.4	528.2	38.9,38.9
30	462.0	481.8	490.5	416.9	390.9	420.9	487.4	491.2	20- 30	313.4	841.6	62,62
40	210.1	223.6	226.4	192.2	178.8	190.5	220.3	223.5	30- 40	193.2	1035	76.2,76.2
50	111.8	116.9	119.2	106.8	98.32	104.0	116.1	117.0	40- 50	116.9	1152	84.8,84.8
60	66.21	68.84	71.47	66.69	60.11	63.08	68.96	68.33	50- 60	77.49	1229	90.6,90.6
70	36.73	39.59	42.38	39.13	33.09	35.08	39.45	37.33	60- 70	50.92	1280	94.3,94.3
80	15.48	18.19	20.49	17.90	11.97	13.84	16.44	14.64	70- 80	27.87	1308	96.4,96.4
90	5.072	5.161	5.360	5.164	1.607	1.736	1.934	1.622	80- 90	8.921	1317	97,97
100	5.053	5.172	5.501	5.182	2.331	2.456	2.587	2.275	90-100	3.933	1321	97.3,97.3
110	5.126	5.381	5.789	5.460	3.435	3.572	3.549	3.296	100-110	4.327	1325	97.6,97.6
120	5.738	6.064	6.525	6.301	5.067	5.120	5.021	4.713	110-120	4.915	1330	98,98
130	7.056	7.383	7.894	7.834	6.962	6.933	6.750	6.463	120-130	5.661	1336	98.4,98.4
140	8.963	9.170	9.580	9.719	8.679	8.622	8.424	8.229	130-140	6.212	1342	98.9,98.9
150	10.93	10.91	11.10	11.39	9.947	9.916	9.676	9.572	140-150	6.089	1348	99.3,99.3
160	12.14	11.91	11.98	12.24	10.66	10.71	10.48	10.31	150-160	5.044	1353	99.7,99.7
170	12.39	12.12	12.22	12.19	11.16	11.28	11.23	10.92	160-170	3.254	1356	99.9,99.9
180	12.10	12.08	12.15	11.90	12.05	12.05	12.12	11.86	170-180	1.125	1358	100,100
DEG	LUMINOUS INTENSITY:cd									UNIT:lm		



LUMINANCE cd/(m2)		
G (DEG)	C0/180	C90/270
85	7616	13724
80	8913	11799
75	9660	11892
70	10738	12391
65	11904	13175
60	13243	14295
55	14984	15919
50	17398	18538
45	21173	22727

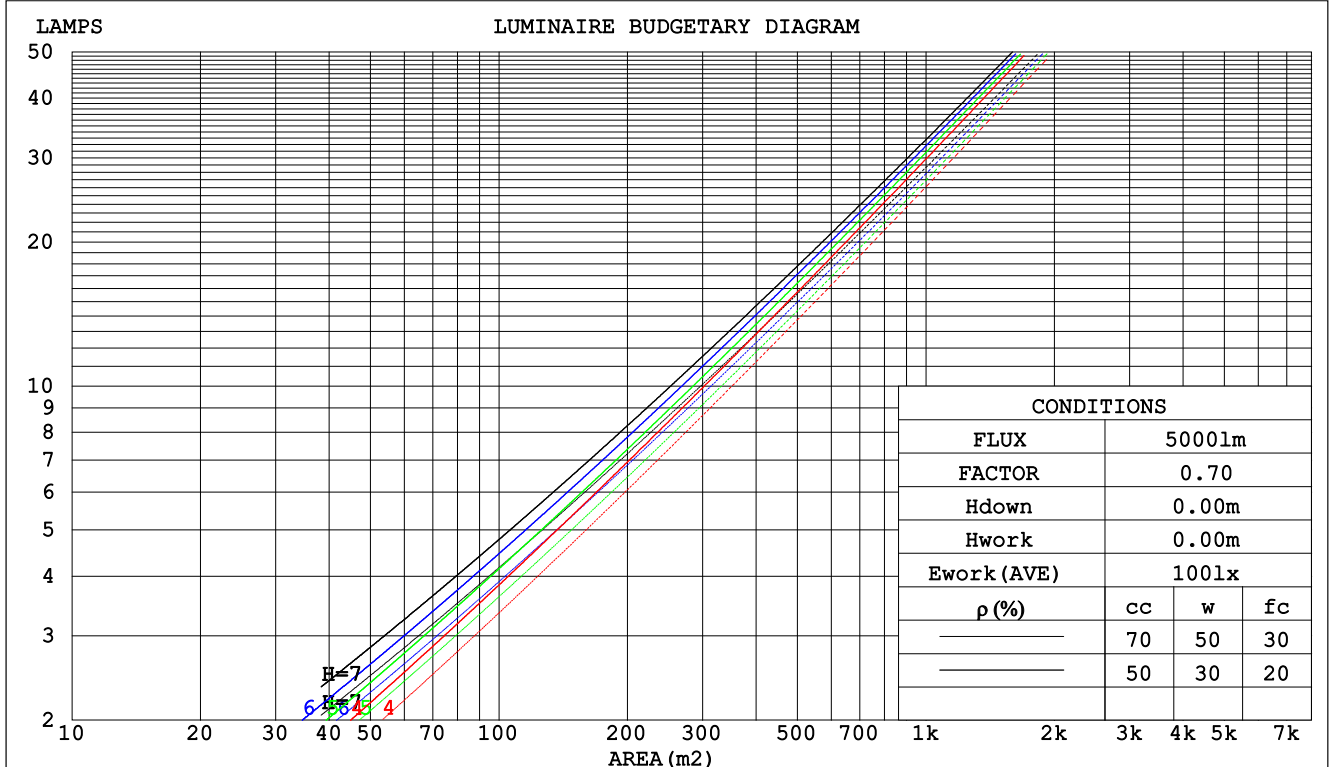
C Range: 0 - 360DEG
C Interval: 30.0DEG
Test Speed: HIGH
Temperature:25.3DEG
Operators:LYH
Test Date:2024-07-19

γ Range: 0 - 180DEG
 γ Interval: 1.0DEG
Test System:EVERFINE GO-2000B_V1 SYSTEM V2.0.269
Humidity:65.0%
Test Distance:10.000m [K=1.0000]
Remarks:

CU AND LUMINAIRE BUDGETARY ESTIMATE DIAGRAM

Test:U:24.00V I:0.7853A P:18.85W PF:1.000 Lamp Flux:1357.5x1 lm		
NAME: SFW20-24V-3535-24-CC-3000K-80-38	TYPE:	WEIGHT:
DIM.: Length=1m	SPEC.:	SERIAL No.:
MFR.:	SUR.:	PROTECTION ANGLE:

pcc	80%			70%			50%			30%			10%			0
pw	50%	30%	10%	50%	30%	10%	50%	30%	10%	50%	30%	10%	50%	30%	10%	0
pfc	20%			20%			20%			20%			20%			0
RCR	RCR:Room Cavity Ratio						Coefficients of Utilization(CU)									
0.0	1.18	1.18	1.18	1.15	1.15	1.15	1.09	1.09	1.09	1.04	1.04	1.04	.99	.99	.99	.97
1.0	1.08	1.05	1.03	1.06	1.03	1.01	1.01	.99	.97	.97	.95	.94	.93	.92	.90	.88
2.0	.99	.95	.91	.97	.93	.89	.94	.90	.87	.90	.87	.85	.87	.84	.82	.80
3.0	.92	.86	.81	.90	.85	.80	.87	.82	.79	.84	.80	.77	.81	.78	.76	.74
4.0	.85	.79	.74	.83	.78	.73	.81	.76	.72	.78	.74	.71	.76	.73	.70	.68
5.0	.79	.73	.68	.78	.72	.67	.76	.70	.66	.74	.69	.66	.72	.68	.65	.63
6.0	.74	.67	.63	.73	.67	.62	.71	.66	.62	.69	.65	.61	.68	.64	.60	.59
7.0	.69	.63	.58	.69	.62	.58	.67	.61	.58	.65	.61	.57	.64	.60	.56	.55
8.0	.65	.59	.55	.65	.59	.54	.63	.58	.54	.62	.57	.54	.61	.56	.53	.52
9.0	.62	.55	.51	.61	.55	.51	.60	.55	.51	.59	.54	.50	.58	.53	.50	.49
10.0	.59	.52	.48	.58	.52	.48	.57	.52	.48	.56	.51	.48	.55	.51	.47	.46



C Range: 0 - 360DEG
C Interval: 30.0DEG
Test Speed: HIGH
Temperature:25.3DEG
Operators:LYH
Test Date:2024-07-19

γ Range: 0 - 180DEG
γ Interval: 1.0DEG
Test System:EVERFINE GO-2000B_V1 SYSTEM V2.0.269
Humidity:65.0%
Test Distance:10.000m [K=1.0000]
Remarks:

WEC AND CCEC

Test:U:24.00V I:0.7853A P:18.85W PF:1.000 Lamp Flux:1357.5x1 lm					
NAME: SFW20-24V-3535-24-CC-3000K-80-38			TYPE:		WEIGHT:
DIM.: Length=1m			SPEC.:		SERIAL No.:
MFR.:			SUR.:		PROTECTION ANGLE:

pcc	80%			70%			50%			30%			10%			0
pw	50%	30%	10%	50%	30%	10%	50%	30%	10%	50%	30%	10%	50%	30%	10%	0
pfc	20%			20%			20%			20%			20%			0
RCR	RCR:Room Cavity Ratio						Wall Exitance Coefficients(WEC)									
0.0																
1.0	.211	.120	.038	.204	.116	.037	.189	.109	.035	.176	.102	.033	.164	.095	.031	
2.0	.200	.109	.034	.193	.106	.033	.181	.100	.031	.169	.095	.030	.159	.090	.028	
3.0	.187	.100	.030	.181	.097	.029	.171	.092	.028	.161	.088	.027	.151	.084	.026	
4.0	.175	.091	.027	.170	.089	.026	.161	.085	.025	.152	.082	.025	.144	.078	.024	
5.0	.165	.084	.024	.160	.082	.024	.152	.079	.023	.144	.076	.023	.137	.073	.022	
6.0	.155	.078	.022	.151	.076	.022	.144	.074	.021	.137	.071	.021	.130	.069	.020	
7.0	.147	.072	.021	.143	.071	.020	.136	.069	.020	.130	.067	.019	.124	.065	.019	
8.0	.139	.068	.019	.136	.067	.019	.130	.065	.018	.124	.063	.018	.119	.061	.018	
9.0	.132	.064	.018	.129	.063	.018	.123	.061	.017	.118	.059	.017	.114	.058	.017	
10.0	.125	.060	.017	.123	.059	.017	.118	.058	.016	.113	.056	.016	.109	.055	.016	

pcc	80%			70%			50%			30%			10%			0	
pw	50%	30%	10%	50%	30%	10%	50%	30%	10%	50%	30%	10%	50%	30%	10%	0	
pfc	20%			20%			20%			20%			20%			0	
RCR	RCR:Room Cavity Ratio						Ceiling Cavity Exitance Coefficients(CCEC)										
0.0	.213	.213	.213	.182	.182	.182	.124	.124	.124	.071	.071	.071	.023	.023	.023		
1.0	.196	.180	.165	.168	.154	.142	.115	.106	.098	.066	.061	.057	.021	.020	.018		
2.0	.183	.155	.132	.157	.134	.114	.107	.093	.080	.062	.054	.047	.020	.017	.015		
3.0	.172	.137	.109	.147	.118	.095	.101	.082	.066	.058	.048	.039	.019	.016	.013		
4.0	.162	.123	.093	.139	.106	.080	.096	.074	.057	.055	.043	.034	.018	.014	.011		
5.0	.153	.111	.080	.132	.096	.070	.091	.067	.049	.053	.040	.029	.017	.013	.010		
6.0	.146	.102	.071	.125	.089	.062	.087	.062	.044	.050	.036	.026	.016	.012	.009		
7.0	.139	.095	.064	.120	.082	.056	.083	.058	.039	.048	.034	.023	.016	.011	.008		
8.0	.133	.089	.058	.115	.077	.051	.079	.054	.036	.046	.032	.021	.015	.010	.007		
9.0	.128	.084	.054	.110	.073	.047	.076	.051	.033	.044	.030	.020	.014	.010	.007		
10.0	.123	.079	.050	.106	.069	.044	.073	.048	.031	.043	.029	.019	.014	.009	.006		

C Range: 0 - 360DEG
 C Interval: 30.0DEG
 Test Speed: HIGH
 Temperature:25.3DEG
 Operators:LYH
 Test Date:2024-07-19

γ Range: 0 - 180DEG
 γ Interval: 1.0DEG
 Test System:EVERFINE GO-2000B_V1 SYSTEM V2.0.269
 Humidity:65.0%
 Test Distance:10.000m [K=1.0000]
 Remarks:

Uncorrected UGR Table

Test:U:24.00V I:0.7853A P:18.85W PF:1.000 Lamp Flux:1357.5x1 lm										
NAME: SFW20-24V-3535-24-CC-3000K-80-38					TYPE:			WEIGHT:		
DIM.: Length=1m					SPEC.:			SERIAL No.:		
MFR.:					SUR.:			PROTECTION ANGLE:		
ceiling/cavity	0.7	0.7	0.5	0.5	0.3	0.7	0.7	0.5	0.5	0.3
walls	0.5	0.3	0.5	0.3	0.3	0.5	0.3	0.5	0.3	0.3
working plane	0.2	0.2	0.2	0.2	0.2	0.2	0.2	0.2	0.2	0.2
Room dimensions	Viewed crosswise					Viewed endwise				
x = 2H y = 2H	19.6	20.7	19.9	20.9	21.1	20.0	21.0	20.3	21.2	21.5
3H	20.5	21.4	20.8	21.7	21.9	20.9	21.9	21.2	22.1	22.4
4H	20.8	21.7	21.1	22.0	22.3	21.3	22.2	21.7	22.5	22.8
6H	21.1	21.9	21.4	22.2	22.5	21.7	22.6	22.1	22.9	23.2
8H	21.2	22.0	21.5	22.3	22.6	21.9	22.7	22.2	23.0	23.3
12H	21.2	22.0	21.6	22.3	22.7	22.0	22.8	22.4	23.1	23.5
4H 2H	20.0	20.9	20.3	21.2	21.4	20.3	21.2	20.6	21.5	21.7
3H	21.0	21.8	21.4	22.1	22.5	21.4	22.2	21.8	22.5	22.8
4H	21.5	22.2	21.9	22.6	22.9	22.0	22.7	22.4	23.0	23.4
6H	21.9	22.5	22.3	22.9	23.3	22.5	23.1	22.9	23.5	23.9
8H	22.0	22.6	22.5	23.0	23.4	22.7	23.3	23.2	23.7	24.1
12H	22.1	22.6	22.6	23.1	23.5	22.9	23.5	23.4	23.9	24.4
8H 4H	21.7	22.3	22.1	22.7	23.1	22.1	22.7	22.6	23.1	23.5
6H	22.2	22.7	22.7	23.1	23.6	22.8	23.3	23.3	23.7	24.2
8H	22.4	22.9	22.9	23.3	23.8	23.1	23.5	23.6	24.0	24.5
12H	22.6	22.9	23.1	23.4	24.0	23.4	23.8	24.0	24.3	24.8
12H 4H	21.7	22.2	22.1	22.7	23.1	22.1	22.6	22.6	23.1	23.5
6H	22.3	22.7	22.8	23.2	23.7	22.8	23.2	23.3	23.7	24.2
8H	22.5	22.9	23.0	23.4	23.9	23.2	23.6	23.7	24.1	24.6
Variations with the observer position at spacings:										
S = 1.0H	+ 0.4 / - 0.6					+ 0.4 / - 0.5				
1.5H	+ 0.5 / - 0.4					+ 0.5 / - 0.3				
2.0H	+ 0.7 / - 0.5					+ 0.6 / - 0.4				

CIE Pub.117 Corrected 1358 lm Total Lamp Luminous Flux. (8log(F/F0) = 1.1)

C Range: 0 - 360DEG
 C Interval: 30.0DEG
 Test Speed: HIGH
 Temperature: 25.3DEG
 Operators: LYH
 Test Date: 2024-07-19

γ Range: 0 - 180DEG
 γ Interval: 1.0DEG
 Test System: EVERFINE GO-2000B_V1 SYSTEM V2.0.269
 Humidity: 65.0%
 Test Distance: 10.000m [K=1.0000]
 Remarks:

UTILIZATION FACTORS TABLE

Test:U:24.00V I:0.7853A P:18.85W PF:1.000 Lamp Flux:1357.5x1 lm		
NAME: SFW20-24V-3535-24-CC-3000K-80-38	TYPE:	WEIGHT:
DIM.: Length=1m	SPEC.:	SERIAL No.:
MFR.:	SUR.:	PROTECTION ANGLE:

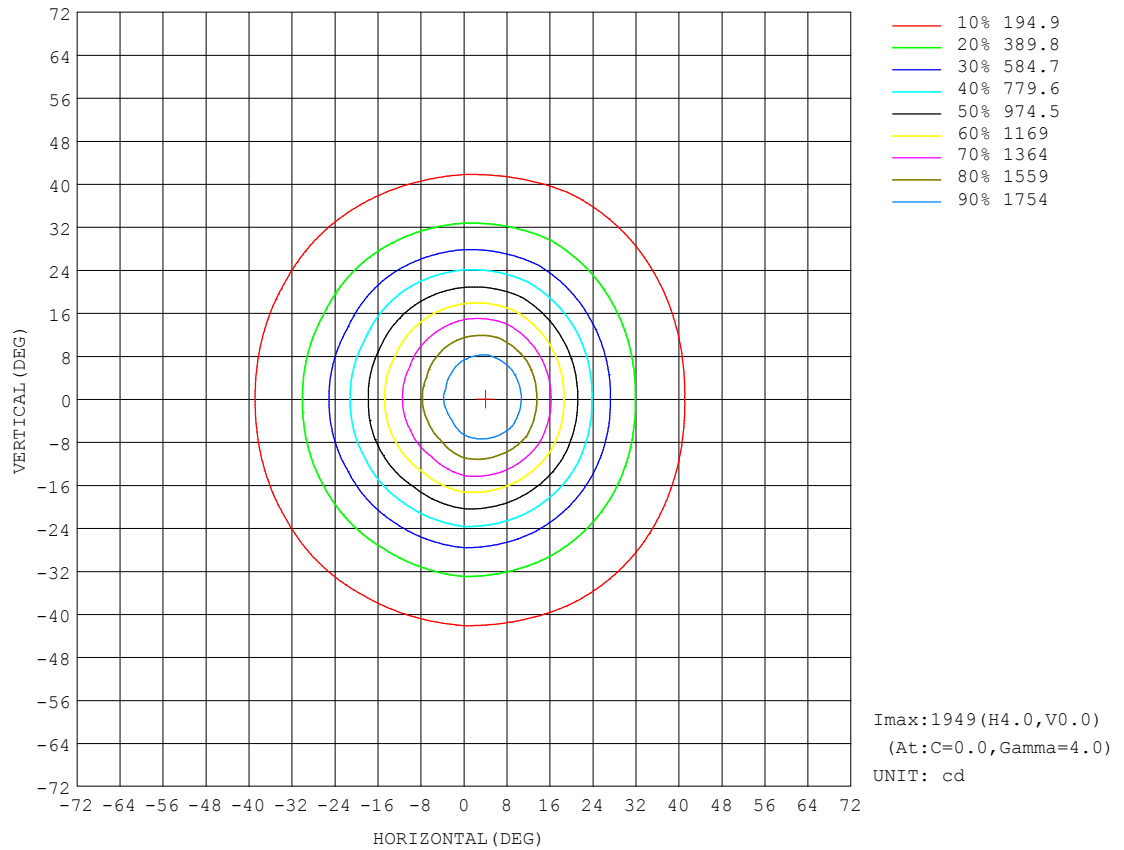
REFLECTANCE										
Ceiling	0.8	0.8	0.8	0.7	0.7	0.7	0.5	0.5	0.5	0
Walls	0.7	0.5	0.3	0.7	0.5	0.3	0.7	0.5	0.3	0
Working plane	0.2	0.2	0.2	0.2	0.2	0.2	0.2	0.2	0.2	0
ROOM INDEX	UTILIZATION FACTORS (PERCENT) $k(RI) \times RCR = 5$									
$k = 0.60$	77	69	64	76	69	64	75	68	64	59
0.80	85	77	72	84	77	72	83	76	72	67
1.00	91	83	79	90	83	78	88	83	78	72
1.25	96	89	84	95	88	84	92	87	83	77
1.50	99	93	88	98	92	88	95	90	86	81
2.00	103	98	93	102	96	93	98	94	91	84
2.50	106	101	97	104	99	96	100	96	93	86
3.00	108	103	100	106	102	98	102	98	96	88
4.00	111	107	104	108	105	102	104	101	99	90
5.00	112	109	106	110	107	105	105	103	101	92
ROOM INDEX	UF(total)									Direct
According to DIN EN 13032-2 2004			Suspended					SHRNOM = 1.25		

C Range: 0 - 360DEG
 C Interval: 30.0DEG
 Test Speed: HIGH
 Temperature: 25.3DEG
 Operators: LYH
 Test Date: 2024-07-19

γ Range: 0 - 180DEG
 γ Interval: 1.0DEG
 Test System: EVERFINE GO-2000B_V1 SYSTEM V2.0.269
 Humidity: 65.0%
 Test Distance: 10.000m [K=1.0000]
 Remarks:

ISOCANDELA DIAGRAM

Test:U:24.00V I:0.7853A P:18.85W PF:1.000 Lamp Flux:1357.5x1 lm		
NAME: SFW20-24V-3535-24-CC-3000K-80-38	TYPE:	WEIGHT:
DIM.: Length=1m	SPEC.:	SERIAL No.:
MFR.:	SUR.:	PROTECTION ANGLE:

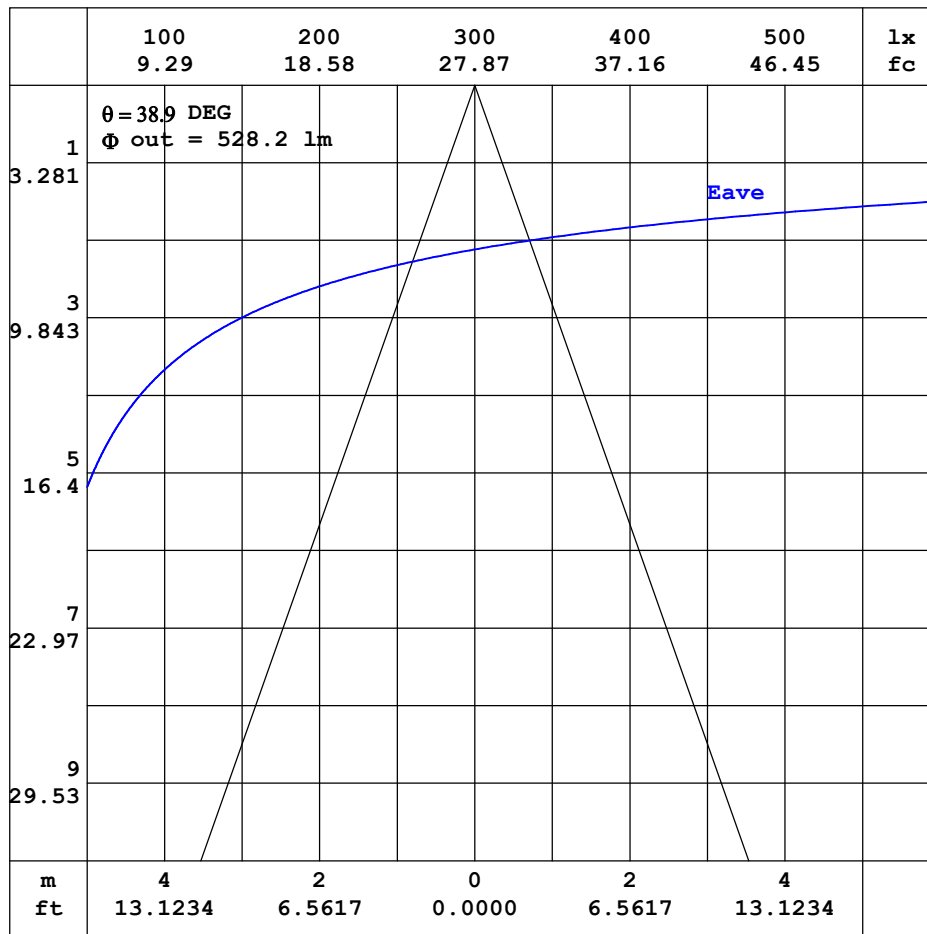


C Range: 0 - 360DEG
C Interval: 30.0DEG
Test Speed: HIGH
Temperature:25.3DEG
Operators:LYH
Test Date:2024-07-19

γ Range: 0 - 180DEG
 γ Interval: 1.0DEG
Test System:EVERFINE GO-2000B_V1 SYSTEM V2.0.269
Humidity:65.0%
Test Distance:10.000m [K=1.0000]
Remarks:

AAI CURVES

Test:U:24.00V I:0.7853A P:18.85W PF:1.000 Lamp Flux:1357.5x1 lm		
NAME: SFW20-24V-3535-24-CC-3000K-80-38	TYPE:	WEIGHT:
DIM.: Length=1m	SPEC.:	SERIAL No.:
MFR.:	SUR.:	PROTECTION ANGLE:



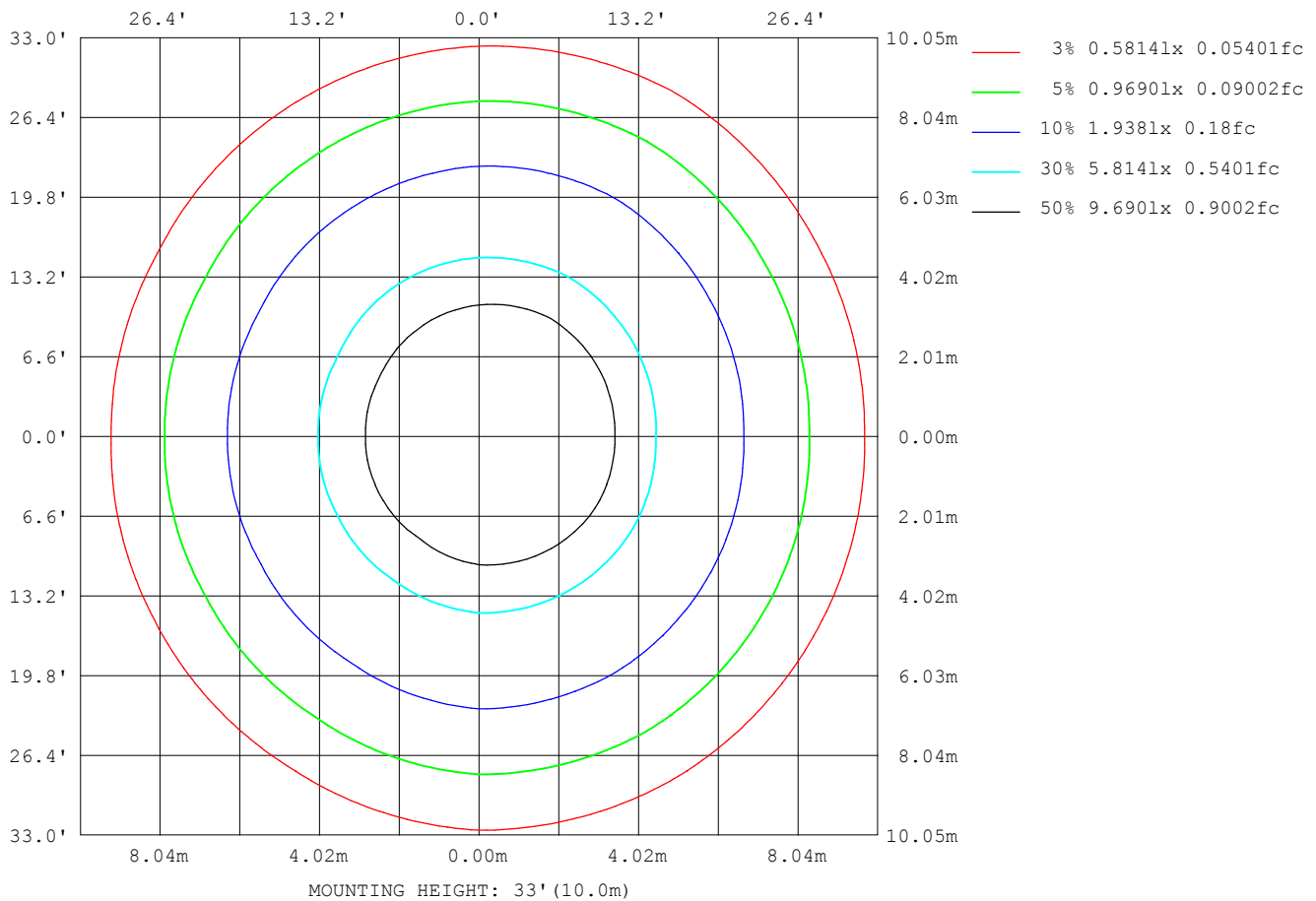
Note:The Curves indicate the illuminated area and the average illumination when the luminaire is at different distance.

C Range: 0 - 360DEG
C Interval: 30.0DEG
Test Speed: HIGH
Temperature:25.3DEG
Operators:LYH
Test Date:2024-07-19

γ Range: 0 - 180DEG
γ Interval: 1.0DEG
Test System:EVERFINE GO-2000B_V1 SYSTEM V2.0.269
Humidity:65.0%
Test Distance:10.000m [K=1.0000]
Remarks:

ISOLUX DIAGRAM

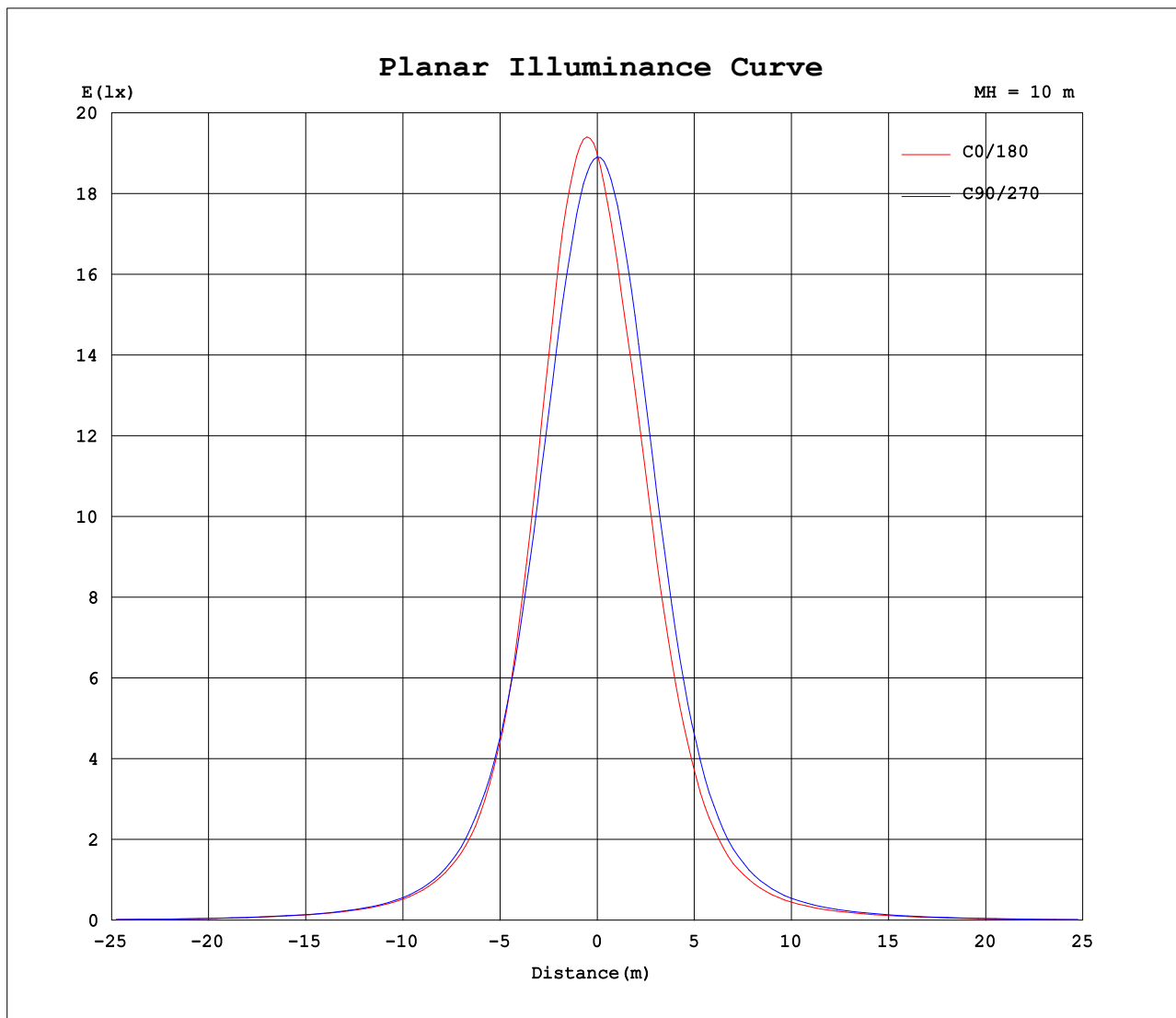
Test:U:24.00V I:0.7853A P:18.85W PF:1.000 Lamp Flux:1357.5x1 lm		
NAME: SFW20-24V-3535-24-CC-3000K-80-38	TYPE:	WEIGHT:
DIM.: Length=1m	SPEC.:	SERIAL No.:
MFR.:	SUR.:	PROTECTION ANGLE:



C Range: 0 - 360DEG
C Interval: 30.0DEG
Test Speed: HIGH
Temperature:25.3DEG
Operators:LYH
Test Date:2024-07-19

γ Range: 0 - 180DEG
γ Interval: 1.0DEG
Test System:EVERFINE GO-2000B_V1 SYSTEM V2.0.269
Humidity:65.0%
Test Distance:10.000m [K=1.0000]
Remarks:

Planar Illuminance Curve



C Range: 0 - 360DEG
C Interval: 30.0DEG
Test Speed: HIGH
Temperature: 25.3DEG
Operators: LYH
Test Date: 2024-07-19

γ Range: 0 - 180DEG
 γ Interval: 1.0DEG
Test System: EVERFINE GO-2000B_V1 SYSTEM V2.0.269
Humidity: 65.0%
Test Distance: 10.000m [K=1.0000]
Remarks:

LUMINOUS DISTRIBUTION INTENSITY DATA

Test:U:24.00V I:0.7853A P:18.85W PF:1.000 Lamp Flux:1357.5x1 lm		
NAME: SFW20-24V-3535-24-CC-3000K-80-38	TYPE:	WEIGHT:
DIM.: Length=1m	SPEC.:	SERIAL No.:
MFR.:	SUR.:	PROTECTION ANGLE:

Table--1

UNIT: cd

C (DEG) γ (DEG)	0	30	60	90	120	150	180	210	240	270	300	330						
0	1901	1891	1893	1890	1889	1893	1901	1891	1893	1890	1889	1893						
5	1941	1921	1868	1811	1733	1703	1701	1708	1759	1826	1891	1928						
10	1793	1767	1684	1607	1495	1446	1443	1458	1537	1636	1727	1778						
15	1462	1452	1381	1317	1202	1163	1154	1172	1251	1351	1435	1461						
20	1063	1072	1038	997	904	857	845	860	950	1026	1091	1083						
25	698	729	723	710	637	595	591	593	670	723	760	733						
30	462	474	490	491	431	403	391	397	445	487	509	473						
35	305	317	333	331	288	267	257	265	291	323	337	314						
40	210	219	229	226	200	184	179	181	200	220	229	218						
45	150	155	161	161	145	136	129	131	143	156	163	154						
50	112	115	119	119	110	104	98.3	99.9	108	116	120	113						
55	85.9	87.5	90.4	91.3	86.4	81.5	76.9	78.1	83.6	89.0	91.5	86.4						
60	66.2	67.8	69.9	71.5	68.3	65.1	60.1	60.9	65.2	69.0	70.5	66.2						
65	50.3	51.9	53.9	55.7	53.3	50.7	45.8	46.3	50.0	53.1	53.7	49.6						
70	36.7	38.5	40.7	42.4	40.3	38.0	33.1	33.4	36.7	39.5	39.3	35.3						
75	25.0	27.1	29.1	30.8	28.7	26.9	21.7	22.2	25.1	27.2	26.8	23.4						
80	15.5	17.1	19.2	20.5	18.9	16.9	12.0	12.6	15.1	16.4	16.2	13.1						
85	6.64	8.06	10.7	12.0	10.4	7.81	3.10	3.67	6.69	7.61	7.18	3.89						
90	5.07	5.10	5.23	5.36	5.24	5.08	1.61	1.66	1.82	1.93	1.72	1.52						
95	5.07	5.10	5.23	5.43	5.24	5.08	1.94	1.94	2.15	2.20	2.02	1.78						
100	5.05	5.11	5.24	5.50	5.26	5.11	2.33	2.35	2.56	2.59	2.42	2.13						
105	5.05	5.16	5.33	5.62	5.35	5.18	2.83	2.87	3.06	3.00	2.88	2.59						
110	5.13	5.27	5.49	5.79	5.57	5.35	3.44	3.49	3.66	3.55	3.44	3.15						
115	5.35	5.53	5.78	6.08	5.90	5.69	4.18	4.23	4.36	4.24	4.09	3.80						
120	5.74	5.92	6.20	6.53	6.40	6.20	5.07	5.08	5.16	5.02	4.85	4.57						
125	6.31	6.49	6.79	7.13	7.07	6.90	6.01	6.00	6.03	5.85	5.69	5.42						
130	7.06	7.23	7.54	7.89	7.89	7.78	6.96	6.93	6.93	6.75	6.58	6.35						
135	7.96	8.10	8.37	8.72	8.78	8.73	7.87	7.84	7.81	7.63	7.45	7.29						
140	8.96	9.07	9.28	9.58	9.71	9.73	8.68	8.64	8.61	8.42	8.28	8.18						
145	10.0	10.0	10.1	10.4	10.6	10.7	9.38	9.34	9.31	9.12	9.02	8.93						
150	10.9	10.9	10.9	11.1	11.3	11.5	9.95	9.93	9.90	9.68	9.62	9.53						
155	11.7	11.6	11.4	11.6	11.8	12.1	10.4	10.4	10.4	10.1	10.0	9.96						
160	12.1	12.0	11.8	12.0	12.1	12.3	10.7	10.7	10.7	10.5	10.4	10.3						
165	12.4	12.2	12.0	12.2	12.2	12.3	10.9	10.9	11.0	10.8	10.7	10.5						
170	12.4	12.2	12.1	12.2	12.2	12.2	11.2	11.2	11.4	11.2	11.0	10.8						
175	12.3	12.1	12.1	12.2	12.2	11.9	11.5	11.5	11.8	11.7	11.5	11.2						
180	12.1	12.0	12.1	12.1	12.0	11.8	12.0	12.0	12.1	12.1	12.0	11.7						

C Range: 0 - 360DEG
C Interval: 30.0DEG
Test Speed: HIGH
Temperature:25.3DEG
Operators:LYH
Test Date:2024-07-19

γ Range: 0 - 180DEG
γ Interval: 1.0DEG
Test System:EVERFINE GO-2000B_V1 SYSTEM V2.0.269
Humidity:65.0%
Test Distance:10.000m [K=1.0000]
Remarks:

Photometric Data Table [cd]

G/C	0.0	30.0	60.0	90.0	120.0	150.0	180.0	210.0	240.0	270.0
0.0	1901	1891	1893	1890	1889	1893	1901	1891	1893	1890
3.0	1948	1931	1899	1858	1808	1786	1787	1790	1827	1869
6.0	1924	1903	1843	1779	1691	1658	1652	1666	1721	1800
9.0	1835	1809	1732	1654	1547	1498	1494	1509	1585	1681
12.0	1670	1660	1570	1496	1379	1337	1332	1348	1429	1526
15.0	1462	1452	1381	1317	1202	1163	1154	1172	1251	1351
18.0	1218	1222	1174	1120	1018	984.5	960.1	986.7	1070	1152
21.0	987.0	997.3	969.0	936.4	849.7	796.7	789.0	801.1	889.8	959.6
24.0	765.8	789.2	781.6	762.1	685.9	644.1	635.9	643.9	720.8	781.3
27.0	595.7	613.3	619.2	612.9	548.5	509.9	501.2	508.4	571.9	623.1
30.0	462.0	473.8	489.9	490.5	430.7	403.0	390.9	396.6	445.3	487.4
33.0	355.3	374.2	389.3	389.8	337.2	310.6	305.3	309.6	343.3	380.2
36.0	282.2	291.2	308.7	307.0	267.0	247.8	238.9	246.3	269.1	299.8
39.0	225.4	233.7	245.7	242.9	214.1	197.1	192.6	196.0	214.8	237.2
42.0	182.1	190.0	199.2	196.8	174.2	161.6	155.6	159.1	174.0	191.6
45.0	149.7	154.7	160.9	160.7	144.9	135.8	129.2	131.4	143.4	155.5
48.0	125.1	129.2	133.6	133.3	122.4	114.2	108.9	110.7	120.5	129.9
51.0	106.1	108.4	112.8	112.6	104.8	98.80	93.51	95.13	102.6	110.0
54.0	90.43	92.29	95.32	96.14	90.56	85.33	80.60	81.73	87.89	93.51
57.0	77.47	79.08	81.25	82.62	78.62	74.89	69.76	70.60	75.81	79.96
60.0	66.21	67.75	69.93	71.47	68.33	65.06	60.11	60.93	65.22	68.96
63.0	56.34	57.81	59.76	61.44	59.09	56.26	51.28	51.88	55.78	58.79
66.0	47.39	49.07	50.95	52.80	50.63	47.94	43.07	43.48	47.19	49.93
69.0	39.26	40.94	43.13	44.87	42.80	40.36	35.43	35.98	39.20	41.83
72.0	31.81	33.62	35.74	37.47	35.46	33.18	28.37	28.72	31.88	34.24
75.0	25.00	27.15	29.06	30.78	28.71	26.92	21.67	22.24	25.08	27.20
78.0	19.06	20.85	23.05	24.36	22.56	20.72	15.57	16.37	18.87	20.62
81.0	13.77	15.39	17.54	18.61	17.12	15.19	10.25	10.90	13.38	14.63
84.0	8.375	10.06	12.38	13.52	12.11	9.817	4.974	5.506	8.374	9.190
87.0	5.480	5.523	6.745	8.924	6.560	5.463	1.881	1.965	3.219	4.649
90.0	5.072	5.096	5.225	5.360	5.244	5.083	1.607	1.656	1.816	1.934
93.0	5.071	5.102	5.224	5.402	5.243	5.083	1.798	1.808	2.012	2.054
96.0	5.065	5.102	5.237	5.439	5.243	5.084	2.012	2.017	2.227	2.268
99.0	5.059	5.108	5.237	5.482	5.243	5.102	2.239	2.268	2.466	2.507
102.0	5.053	5.126	5.267	5.537	5.298	5.126	2.515	2.550	2.748	2.759
105.0	5.053	5.157	5.329	5.617	5.353	5.182	2.828	2.869	3.055	2.998
108.0	5.071	5.213	5.414	5.709	5.469	5.274	3.184	3.218	3.399	3.316
111.0	5.157	5.317	5.537	5.826	5.616	5.409	3.583	3.647	3.785	3.684
114.0	5.304	5.464	5.708	6.004	5.825	5.611	4.030	4.058	4.208	4.083
117.0	5.493	5.661	5.923	6.231	6.088	5.875	4.521	4.561	4.668	4.555
120.0	5.738	5.924	6.204	6.525	6.401	6.200	5.067	5.082	5.159	5.021
123.0	6.063	6.231	6.548	6.869	6.787	6.599	5.613	5.628	5.668	5.499
126.0	6.443	6.624	6.934	7.286	7.228	7.072	6.202	6.192	6.208	6.020
129.0	6.884	7.066	7.381	7.722	7.718	7.581	6.778	6.756	6.747	6.572
132.0	7.399	7.550	7.872	8.218	8.233	8.151	7.342	7.314	7.287	7.111
135.0	7.963	8.102	8.375	8.721	8.779	8.734	7.869	7.841	7.814	7.633
138.0	8.552	8.679	8.914	9.242	9.337	9.335	8.354	8.326	8.305	8.148
141.0	9.177	9.261	9.459	9.752	9.883	9.930	8.826	8.792	8.752	8.565
144.0	9.803	9.856	9.981	10.24	10.40	10.50	9.242	9.215	9.181	9.001
147.0	10.40	10.41	10.47	10.70	10.88	11.03	9.616	9.596	9.561	9.363
150.0	10.93	10.93	10.90	11.10	11.30	11.49	9.947	9.933	9.898	9.676
153.0	11.40	11.37	11.26	11.44	11.63	11.87	10.22	10.21	10.19	9.951
156.0	11.78	11.70	11.53	11.71	11.90	12.15	10.44	10.44	10.44	10.19
159.0	12.07	11.96	11.74	11.92	12.09	12.33	10.62	10.64	10.65	10.41
162.0	12.26	12.13	11.89	12.07	12.19	12.34	10.75	10.80	10.85	10.61
165.0	12.36	12.18	11.99	12.17	12.23	12.32	10.87	10.94	11.03	10.83
168.0	12.39	12.18	12.04	12.22	12.23	12.23	11.04	11.09	11.22	11.06
171.0	12.39	12.15	12.09	12.22	12.23	12.12	11.22	11.25	11.44	11.32
174.0	12.35	12.10	12.12	12.22	12.21	11.99	11.45	11.45	11.66	11.58
177.0	12.25	12.06	12.14	12.21	12.15	11.89	11.74	11.70	11.94	11.86
180.0	12.10	12.02	12.15	12.15	12.01	11.79	12.05	11.98	12.12	12.12
G/C	300.0	330.0								
0.0	1889	1893								
3.0	1911	1936								
6.0	1872	1911								
9.0	1773	1818								
12.0	1623	1669								
15.0	1435	1461								
18.0	1230	1233								
21.0	1022	1002								
24.0	820.9	797.5								
27.0	647.3	614.0								
30.0	509.2	473.3								

C Range: 0 - 360DEG
 C Interval: 30.0DEG
 Test Speed: HIGH
 Temperature: 25.3DEG
 Operators: LYH
 Test Date: 2024-07-19

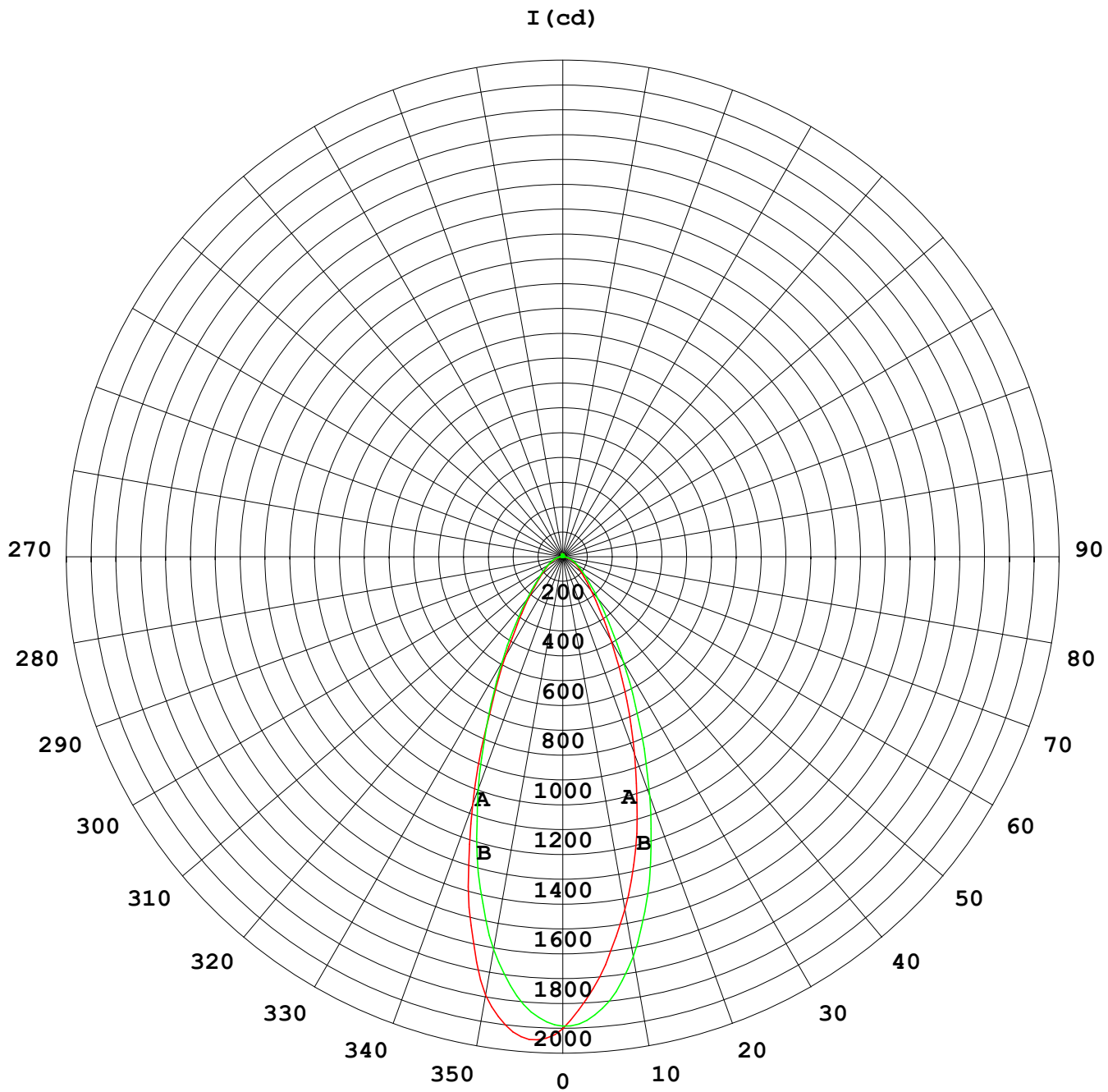
γ Range: 0 - 180DEG
 γ Interval: 1.0DEG
 Test System: EVERFINE GO-2000B_V1 SYSTEM V2.0.269
 Humidity: 65.0%
 Test Distance: 10.000m [K=1.0000]
 Remarks:

Photometric Data Table [cd]

33.0	399.5	373.3
36.0	311.8	290.9
39.0	246.8	233.2
42.0	199.4	189.2
45.0	162.9	153.8
48.0	135.3	127.3
51.0	113.9	107.7
54.0	96.53	90.99
57.0	82.38	77.54
60.0	70.49	66.17
63.0	59.99	55.82
66.0	50.63	46.45
69.0	41.99	38.14
72.0	34.03	30.44
75.0	26.83	23.44
78.0	20.19	16.99
81.0	14.32	11.38
84.0	8.962	5.844
87.0	3.529	1.863
90.0	1.724	1.521
93.0	1.896	1.637
96.0	2.092	1.839
99.0	2.325	2.048
102.0	2.589	2.311
105.0	2.877	2.593
108.0	3.202	2.912
111.0	3.564	3.267
114.0	3.957	3.672
117.0	4.386	4.089
120.0	4.852	4.573
123.0	5.337	5.076
126.0	5.852	5.597
129.0	6.392	6.179
132.0	6.931	6.731
135.0	7.452	7.290
138.0	7.961	7.848
141.0	8.433	8.320
144.0	8.875	8.792
147.0	9.273	9.179
150.0	9.616	9.528
153.0	9.880	9.798
156.0	10.11	10.03
159.0	10.30	10.23
162.0	10.49	10.36
165.0	10.66	10.53
168.0	10.87	10.69
171.0	11.10	10.87
174.0	11.39	11.12
177.0	11.69	11.40
180.0	12.01	11.71

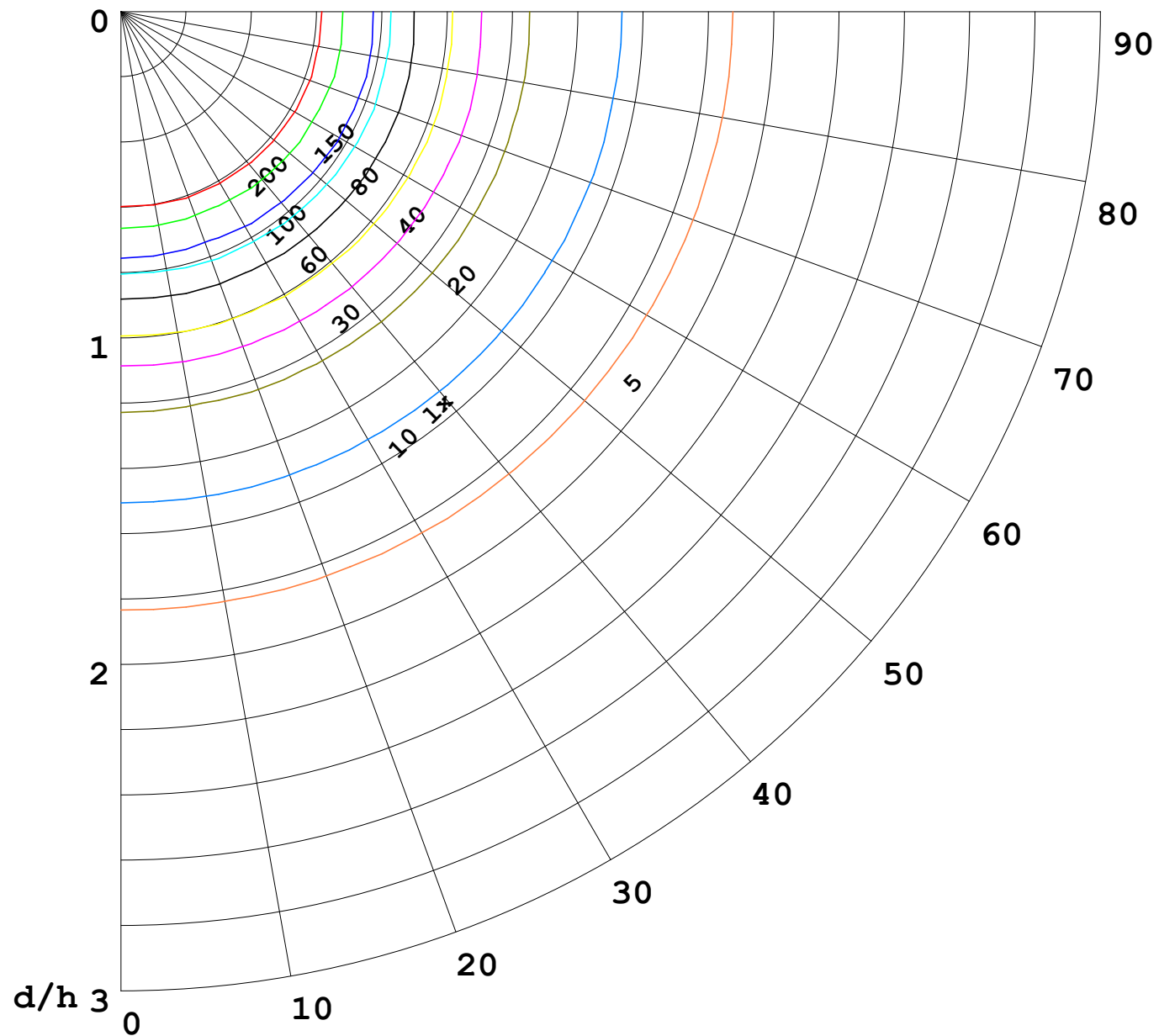
C Range: 0 - 360DEG
C Interval: 30.0DEG
Test Speed: HIGH
Temperature:25.3DEG
Operators:LYH
Test Date:2024-07-19

γ Range: 0 - 180DEG
γ Interval: 1.0DEG
Test System:EVERFINE GO-2000B_V1 SYSTEM V2.0.269
Humidity:65.0%
Test Distance:10.000m [K=1.0000]
Remarks:



1000 lm

$\kappa = 1$



F = 5000 lm
 K = 0.7
 Hcc = 0.0 m
 Hfc = 0.0 m
 Eave = 100 lx

	Pcc	Pw	Pfc
—	70	50	30
—	50	30	20

