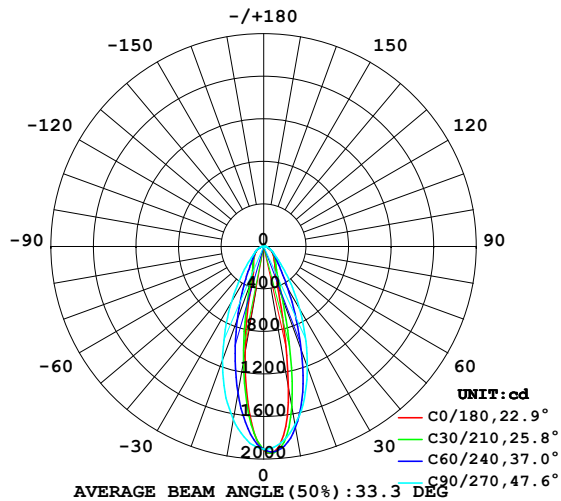


LUMINAIRE PHOTOMETRIC TEST REPORT

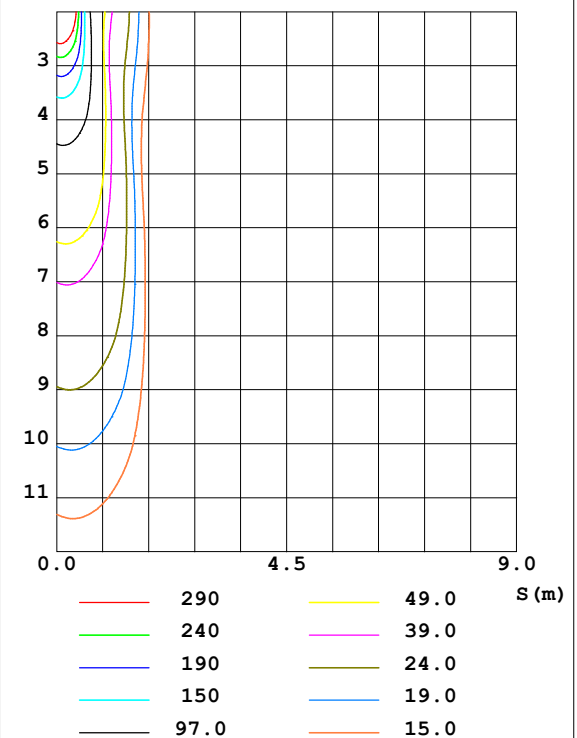
Test:U:24.00V I:0.7616A P:18.28W PF:1.000 Lamp Flux:1179.27x1 lm		
NAME: SFW20-24V-3535-24-CC-3000K-80-2040	TYPE:	WEIGHT:
DIM.: Length=1m	SPEC.:	SERIAL No.:
MFR.:	SUR.:	PROTECTION ANGLE:

DATA OF LAMP		PHOTOMETRIC DATA Eff: 64.52 lm/W			
MODEL	3535	I _{max} (cd)	1947	S/MH (C0/180)	0.43
NOMINAL POWER (W)		LOR (%)	100.0	S/MH (C90/270)	0.76
RATED VOLTAGE (V)		TOTAL FLUX (lm)	1179.3	η UP, DN (C0-180)	1.6, 50.3
NOMINAL FLUX (lm)	1179.27	CIE CLASS	DIRECT	η UP, DN (C180-360)	1.3, 46.8
LAMPS INSIDE	1	η up (%)	2.9	CIBSE SHR NOM	0.50
TEST VOLTAGE (V)		η down (%)	97.1	CIBSE SHR MAX	0.50

LUMINOUS INTENSITY DISTRIBUTION DIAGRAM



C0 PLANE ISOLUX DIAGRAM (UNIT:lx)



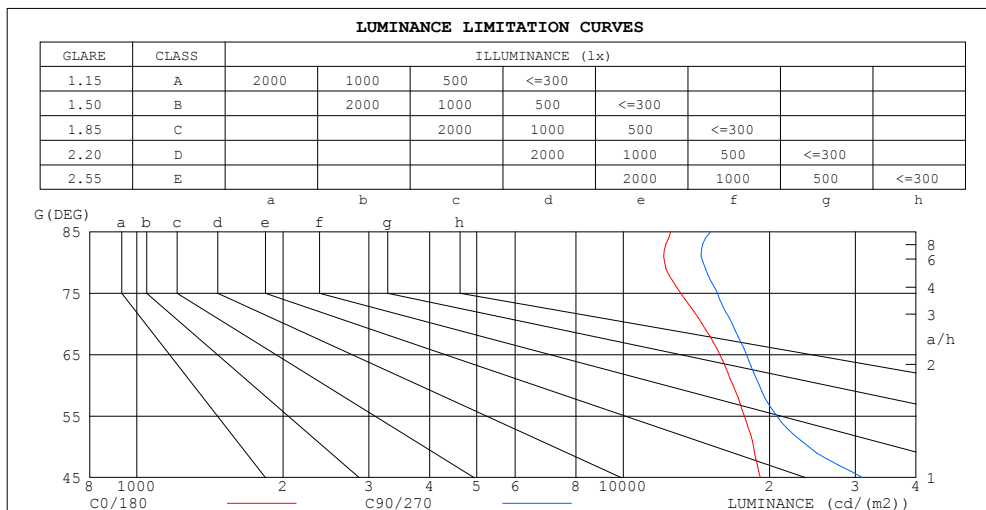
C Range: 0 - 360DEG
C Interval: 30.0DEG
Test Speed: HIGH
Temperature: 25.3DEG
Operators: LYH
Test Date: 2024-07-09

γ Range: 0 - 180DEG
γ Interval: 1.0DEG
Test System: EVERFINE GO-2000B_V1 SYSTEM V2.0.269
Humidity: 65.0%
Test Distance: 10.000m [K=1.0000]
Remarks:

ZONAL FLUX DIAGRAM AND LUMINANCE LIMITATION CURVES

ZONAL FLUX DIAGRAM:

γ	C0	C45	C90	C135	C180	C225	C270	C315	γ	Φ zone	Φ total	%lum, lamp
10	1342	1628	1699	1254	1012	1247	1651	1577	0- 10	158.1	158.1	13.4,13.4
20	374.0	768.8	1202	548.8	305.8	548.7	1140	699.1	10- 20	278.6	436.7	37,37
30	216.3	346.8	677.2	266.4	195.3	267.2	611.4	302.3	20- 30	219.3	656.0	55.6,55.6
40	155.5	194.8	322.8	168.5	149.0	161.9	281.5	172.4	30- 40	158.4	814.4	69.1,69.1
50	119.1	131.8	154.6	124.2	109.8	117.2	134.7	124.6	40- 50	119.5	933.9	79.2,79.2
60	84.17	89.42	95.26	87.53	79.58	81.71	85.68	86.42	50- 60	94.26	1028	87.2,87.2
70	49.71	53.67	57.28	51.97	45.44	47.40	51.32	49.95	60- 70	67.55	1096	92.9,92.9
80	21.12	23.28	25.36	22.52	17.66	19.05	21.34	20.12	70- 80	37.05	1133	96.1,96.1
90	4.280	4.391	4.659	4.442	1.484	1.729	2.020	1.623	80- 90	11.91	1145	97.1,97.1
100	4.236	4.457	4.862	4.445	2.061	2.363	2.660	2.195	90-100	3.503	1148	97.4,97.4
110	4.303	4.693	5.162	4.659	2.753	3.255	3.549	3.007	100-110	3.845	1152	97.7,97.7
120	4.579	5.177	5.800	5.300	3.913	4.485	4.689	4.120	110-120	4.267	1156	98,98
130	5.541	6.167	6.788	6.511	5.845	5.977	5.939	5.551	120-130	4.809	1161	98.5,98.5
140	7.422	7.611	7.940	8.068	7.462	7.366	7.141	7.020	130-140	5.236	1166	98.9,98.9
150	9.366	9.052	8.939	9.512	8.314	8.415	8.049	8.062	140-150	5.105	1171	99.3,99.3
160	10.59	9.910	9.613	10.33	8.933	9.171	8.699	8.574	150-160	4.225	1176	99.7,99.7
170	10.53	9.934	9.981	10.23	9.055	9.561	9.373	8.850	160-170	2.723	1178	99.9,99.9
180	9.484	9.876	10.08	9.668	9.460	9.873	10.06	9.653	170-180	0.9241	1179	100,100
DEG	LUMINOUS INTENSITY:cd									UNIT:lm		



LUMINANCE cd/(m2)		
G (DEG)	C0/180	C90/270
85	12515	15134
80	12162	14603
75	13134	15615
70	14535	16749
65	15795	17939
60	16835	19053
55	17734	20708
50	18528	24055
45	19150	31082

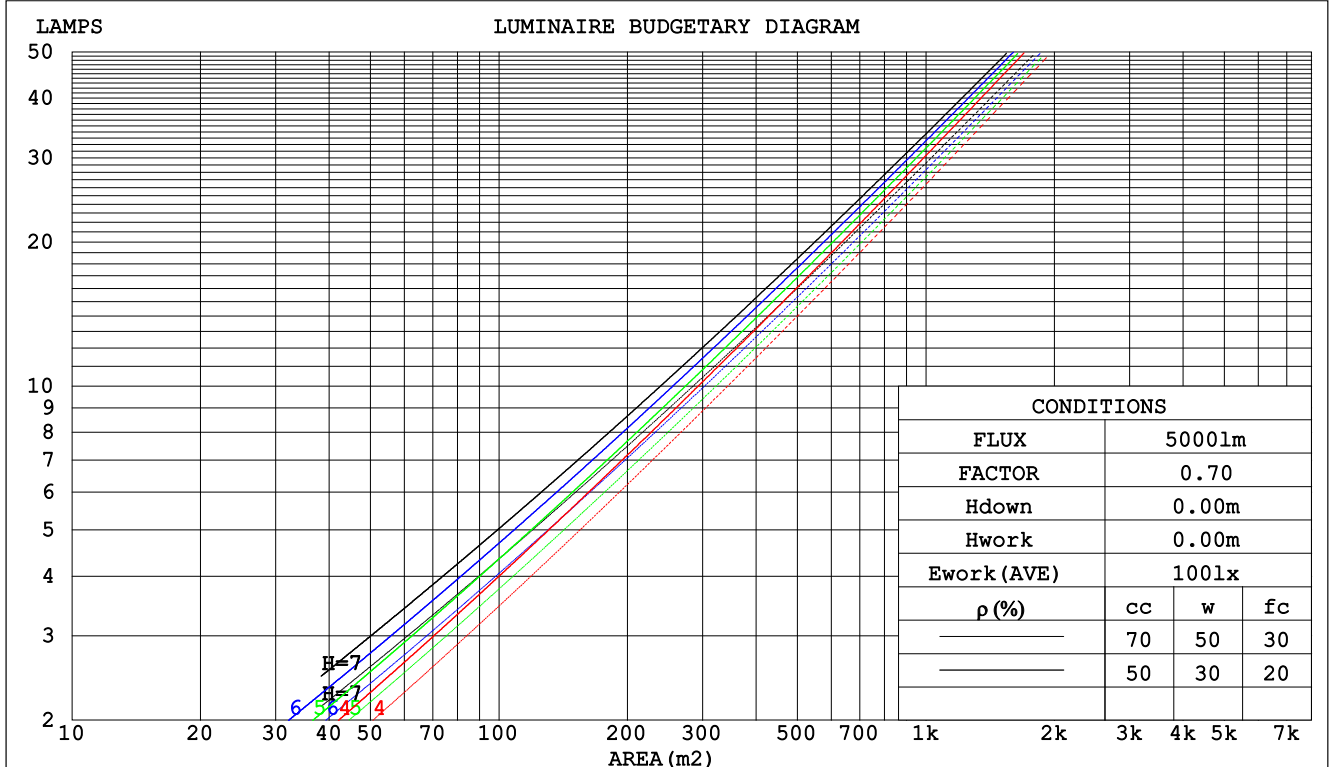
C Range: 0 - 360DEG
C Interval: 30.0DEG
Test Speed: HIGH
Temperature:25.3DEG
Operators:LYH
Test Date:2024-07-09

γ Range: 0 - 180DEG
 γ Interval: 1.0DEG
Test System:EVERFINE GO-2000B_V1 SYSTEM V2.0.269
Humidity:65.0%
Test Distance:10.000m [K=1.0000]
Remarks:

CU AND LUMINAIRE BUDGETARY ESTIMATE DIAGRAM

Test:U:24.00V I:0.7616A P:18.28W PF:1.000 Lamp Flux:1179.27x1 lm		
NAME: SFW20-24V-3535-24-CC-3000K-80-2040	TYPE:	WEIGHT:
DIM.: Length=1m	SPEC.:	SERIAL No.:
MFR.:	SUR.:	PROTECTION ANGLE:

pcc	80%			70%			50%			30%			10%			0
pw	50%	30%	10%	50%	30%	10%	50%	30%	10%	50%	30%	10%	50%	30%	10%	0
pfc	20%			20%			20%			20%			20%			0
RCR	RCR:Room Cavity Ratio						Coefficients of Utilization(CU)									
0.0	1.18	1.18	1.18	1.15	1.15	1.15	1.09	1.09	1.09	1.04	1.04	1.04	.99	.99	.99	.97
1.0	1.07	1.04	1.01	1.05	1.02	.99	1.00	.98	.96	.96	.94	.92	.92	.90	.89	.87
2.0	.98	.92	.88	.96	.91	.87	.92	.88	.85	.88	.85	.82	.85	.82	.80	.78
3.0	.89	.83	.78	.88	.82	.77	.84	.80	.76	.81	.78	.74	.79	.75	.73	.71
4.0	.82	.76	.70	.81	.75	.70	.78	.73	.69	.76	.71	.68	.73	.70	.66	.65
5.0	.76	.69	.64	.75	.69	.64	.73	.67	.63	.71	.66	.62	.69	.65	.61	.60
6.0	.71	.64	.59	.70	.64	.59	.68	.62	.58	.66	.61	.58	.65	.60	.57	.55
7.0	.67	.60	.55	.66	.59	.55	.64	.58	.54	.63	.57	.54	.61	.57	.53	.52
8.0	.63	.56	.51	.62	.56	.51	.61	.55	.51	.59	.54	.50	.58	.53	.50	.48
9.0	.59	.53	.48	.59	.52	.48	.57	.52	.48	.56	.51	.47	.55	.50	.47	.46
10.0	.56	.50	.46	.56	.49	.45	.54	.49	.45	.53	.48	.45	.52	.48	.45	.43



C Range: 0 - 360DEG
C Interval: 30.0DEG
Test Speed: HIGH
Temperature:25.3DEG
Operators:LYH
Test Date:2024-07-09

γ Range: 0 - 180DEG
γ Interval: 1.0DEG
Test System:EVERFINE GO-2000B_V1 SYSTEM V2.0.269
Humidity:65.0%
Test Distance:10.000m [K=1.0000]
Remarks:

WEC AND CCEC

Test:U:24.00V I:0.7616A P:18.28W PF:1.000 Lamp Flux:1179.27x1 lm									
NAME: SFW20-24V-3535-24-CC-3000K-80-2040					TYPE:			WEIGHT:	
DIM.: Length=1m					SPEC.:			SERIAL No.:	
MFR.:					SUR.:			PROTECTION ANGLE:	

pcc	80%			70%			50%			30%			10%			0
pw	50%	30%	10%	50%	30%	10%	50%	30%	10%	50%	30%	10%	50%	30%	10%	0
pfc	20%			20%			20%			20%			20%			0
RCR	RCR:Room Cavity Ratio						Wall Exitance Coefficients(WEC)									
0.0																
1.0	.231	.131	.042	.223	.127	.040	.208	.120	.038	.195	.112	.036	.183	.106	.034	
2.0	.217	.119	.036	.210	.116	.036	.197	.110	.034	.186	.104	.033	.175	.099	.031	
3.0	.202	.107	.032	.196	.105	.032	.185	.100	.030	.175	.096	.029	.165	.092	.028	
4.0	.188	.098	.029	.183	.096	.028	.173	.092	.027	.164	.088	.027	.156	.085	.026	
5.0	.175	.089	.026	.171	.088	.026	.162	.085	.025	.154	.081	.024	.147	.079	.024	
6.0	.164	.082	.024	.160	.081	.023	.153	.078	.023	.146	.076	.022	.139	.073	.022	
7.0	.154	.076	.022	.151	.075	.021	.144	.073	.021	.138	.071	.021	.132	.068	.020	
8.0	.145	.071	.020	.142	.070	.020	.136	.068	.019	.130	.066	.019	.125	.064	.019	
9.0	.137	.066	.019	.134	.066	.018	.129	.064	.018	.124	.062	.018	.119	.060	.017	
10.0	.130	.062	.017	.127	.062	.017	.122	.060	.017	.118	.058	.017	.113	.057	.016	

pcc	80%			70%			50%			30%			10%			0
pw	50%	30%	10%	50%	30%	10%	50%	30%	10%	50%	30%	10%	50%	30%	10%	0
pfc	20%			20%			20%			20%			20%			0
RCR	RCR:Room Cavity Ratio						Ceiling Cavity Exitance Coefficients(CCEC)									
0.0	.213	.213	.213	.182	.182	.182	.124	.124	.124	.071	.071	.071	.023	.023	.023	
1.0	.197	.179	.163	.169	.154	.140	.116	.106	.097	.066	.061	.056	.021	.020	.018	
2.0	.185	.155	.130	.158	.133	.112	.109	.092	.078	.063	.054	.046	.020	.017	.015	
3.0	.174	.137	.107	.149	.118	.093	.103	.082	.065	.059	.048	.038	.019	.016	.013	
4.0	.165	.123	.090	.141	.106	.079	.097	.074	.055	.056	.043	.033	.018	.014	.011	
5.0	.156	.111	.078	.134	.096	.068	.092	.067	.048	.054	.040	.029	.017	.013	.009	
6.0	.149	.102	.069	.128	.089	.060	.088	.062	.043	.051	.037	.025	.016	.012	.008	
7.0	.142	.095	.062	.122	.082	.054	.084	.058	.039	.049	.034	.023	.016	.011	.008	
8.0	.135	.089	.057	.117	.077	.050	.081	.054	.035	.047	.032	.021	.015	.010	.007	
9.0	.130	.084	.053	.112	.073	.046	.077	.051	.033	.045	.030	.019	.015	.010	.006	
10.0	.125	.079	.049	.107	.069	.043	.075	.049	.031	.043	.029	.018	.014	.009	.006	

C Range: 0 - 360DEG
 C Interval: 30.0DEG
 Test Speed: HIGH
 Temperature:25.3DEG
 Operators:LYH
 Test Date:2024-07-09

γ Range: 0 - 180DEG
 γ Interval: 1.0DEG
 Test System:EVERFINE GO-2000B_V1 SYSTEM V2.0.269
 Humidity:65.0%
 Test Distance:10.000m [K=1.0000]
 Remarks:

Uncorrected UGR Table

Test:U:24.00V I:0.7616A P:18.28W PF:1.000 Lamp Flux:1179.27x1 lm											
NAME: SFW20-24V-3535-24-CC-3000K-80-2040					TYPE:			WEIGHT:			
DIM.: Length=1m					SPEC.:			SERIAL No.:			
MFR.:					SUR.:			PROTECTION ANGLE:			
ceiling/cavity	0.7	0.7	0.5	0.5	0.3	0.7	0.7	0.5	0.5	0.3	
walls	0.5	0.3	0.5	0.3	0.3	0.5	0.3	0.5	0.3	0.3	
working plane	0.2	0.2	0.2	0.2	0.2	0.2	0.2	0.2	0.2	0.2	
Room dimensions	Viewed crosswise					Viewed endwise					
x = 2H y = 2H	20.6	21.7	20.9	21.9	22.2	21.9	23.0	22.2	23.2	23.4	
	3H	21.9	22.9	22.2	23.2	23.5	23.0	24.0	23.3	24.3	24.5
	4H	22.4	23.4	22.8	23.7	24.0	23.5	24.4	23.8	24.7	25.0
	6H	22.8	23.7	23.1	24.0	24.3	23.8	24.7	24.2	25.0	25.4
	8H	22.9	23.8	23.3	24.1	24.5	24.0	24.9	24.3	25.2	25.5
	12H	23.0	23.9	23.4	24.2	24.6	24.1	24.9	24.5	25.3	25.6
4H	2H	21.2	22.2	21.6	22.5	22.8	22.2	23.2	22.6	23.5	23.8
	3H	22.7	23.6	23.1	23.9	24.2	23.5	24.4	23.9	24.7	25.1
	4H	23.3	24.1	23.7	24.5	24.8	24.1	24.9	24.6	25.3	25.7
	6H	23.8	24.5	24.2	24.9	25.3	24.7	25.3	25.1	25.7	26.1
	8H	24.0	24.6	24.5	25.0	25.5	24.9	25.5	25.3	25.9	26.3
	12H	24.2	24.7	24.6	25.2	25.6	25.0	25.6	25.5	26.0	26.5
8H	4H	23.6	24.2	24.0	24.6	25.1	24.3	25.0	24.8	25.4	25.8
	6H	24.2	24.7	24.7	25.2	25.7	25.0	25.5	25.4	25.9	26.4
	8H	24.5	25.0	25.0	25.4	25.9	25.3	25.7	25.8	26.2	26.7
	12H	24.7	25.1	25.3	25.6	26.2	25.5	25.9	26.0	26.4	26.9
12H	4H	23.6	24.2	24.1	24.6	25.1	24.3	24.9	24.8	25.3	25.8
	6H	24.3	24.7	24.8	25.2	25.7	25.0	25.5	25.5	25.9	26.4
	8H	24.6	25.0	25.1	25.5	26.0	25.3	25.7	25.8	26.2	26.8
Variations with the observer position at spacings:											
S = 1.0H	+ 0.2 / - 0.3					+ 0.5 / - 0.4					
1.5H	+ 0.2 / - 0.4					+ 1.0 / - 0.4					
2.0H	+ 0.2 / - 0.3					+ 0.8 / - 0.4					

CIE Pub.117 Corrected 1179 lm Total Lamp Luminous Flux. (8log(F/F0) = 0.6)

C Range: 0 - 360DEG
 C Interval: 30.0DEG
 Test Speed: HIGH
 Temperature: 25.3DEG
 Operators: LYH
 Test Date: 2024-07-09

γ Range: 0 - 180DEG
 γ Interval: 1.0DEG
 Test System: EVERFINE GO-2000B_V1 SYSTEM V2.0.269
 Humidity: 65.0%
 Test Distance: 10.000m [K=1.0000]
 Remarks:

UTILIZATION FACTORS TABLE

Test:U:24.00V I:0.7616A P:18.28W PF:1.000 Lamp Flux:1179.27x1 lm		
NAME: SFW20-24V-3535-24-CC-3000K-80-2040	TYPE:	WEIGHT:
DIM.: Length=1m	SPEC.:	SERIAL No.:
MFR.:	SUR.:	PROTECTION ANGLE:

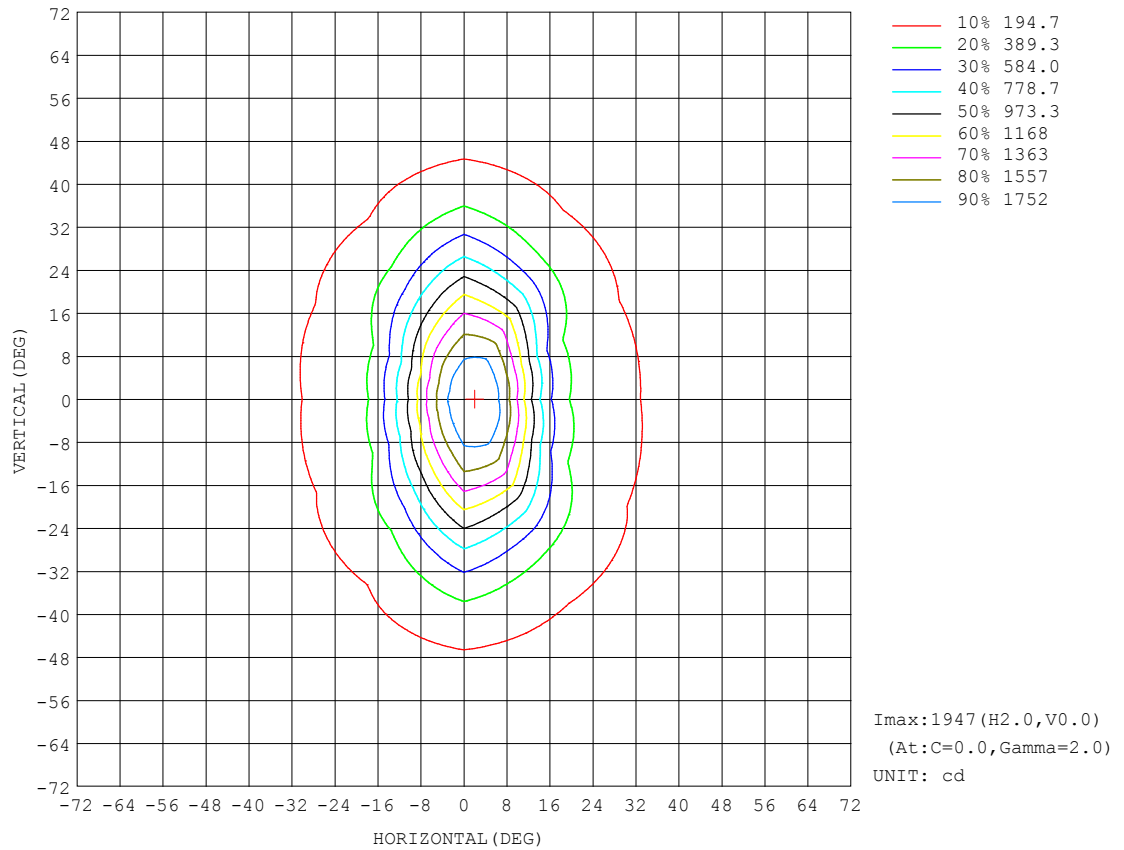
REFLECTANCE										
Ceiling	0.8	0.8	0.8	0.7	0.7	0.7	0.5	0.5	0.5	0
Walls	0.7	0.5	0.3	0.7	0.5	0.3	0.7	0.5	0.3	0
Working plane	0.2	0.2	0.2	0.2	0.2	0.2	0.2	0.2	0.2	0
ROOM INDEX	UTILIZATION FACTORS (PERCENT) $k(RI) \times RCR = 5$									
$k = 0.60$	72	64	58	72	63	58	71	63	58	53
0.80	81	72	67	80	72	67	78	71	66	61
1.00	87	79	74	86	79	73	84	79	73	67
1.25	93	85	80	91	84	79	89	83	78	72
1.50	97	89	84	95	88	84	92	86	82	76
2.00	101	95	90	99	94	89	96	91	87	80
2.50	104	98	94	102	97	93	98	94	90	83
3.00	106	101	97	104	100	96	100	96	93	85
4.00	109	105	102	107	103	100	103	100	97	88
5.00	111	108	105	109	106	103	104	102	99	90
ROOM INDEX	UF(total)									Direct
According to DIN EN 13032-2 2004			Suspended					SHRNOM = 1.25		

C Range: 0 - 360DEG
 C Interval: 30.0DEG
 Test Speed: HIGH
 Temperature: 25.3DEG
 Operators: LYH
 Test Date: 2024-07-09

γ Range: 0 - 180DEG
 γ Interval: 1.0DEG
 Test System: EVERFINE GO-2000B_V1 SYSTEM V2.0.269
 Humidity: 65.0%
 Test Distance: 10.000m [K=1.0000]
 Remarks:

ISOCANDELA DIAGRAM

Test:U:24.00V I:0.7616A P:18.28W PF:1.000 Lamp Flux:1179.27x1 lm		
NAME: SFW20-24V-3535-24-CC-3000K-80-2040	TYPE:	WEIGHT:
DIM.: Length=1m	SPEC.:	SERIAL No.:
MFR.:	SUR.:	PROTECTION ANGLE:

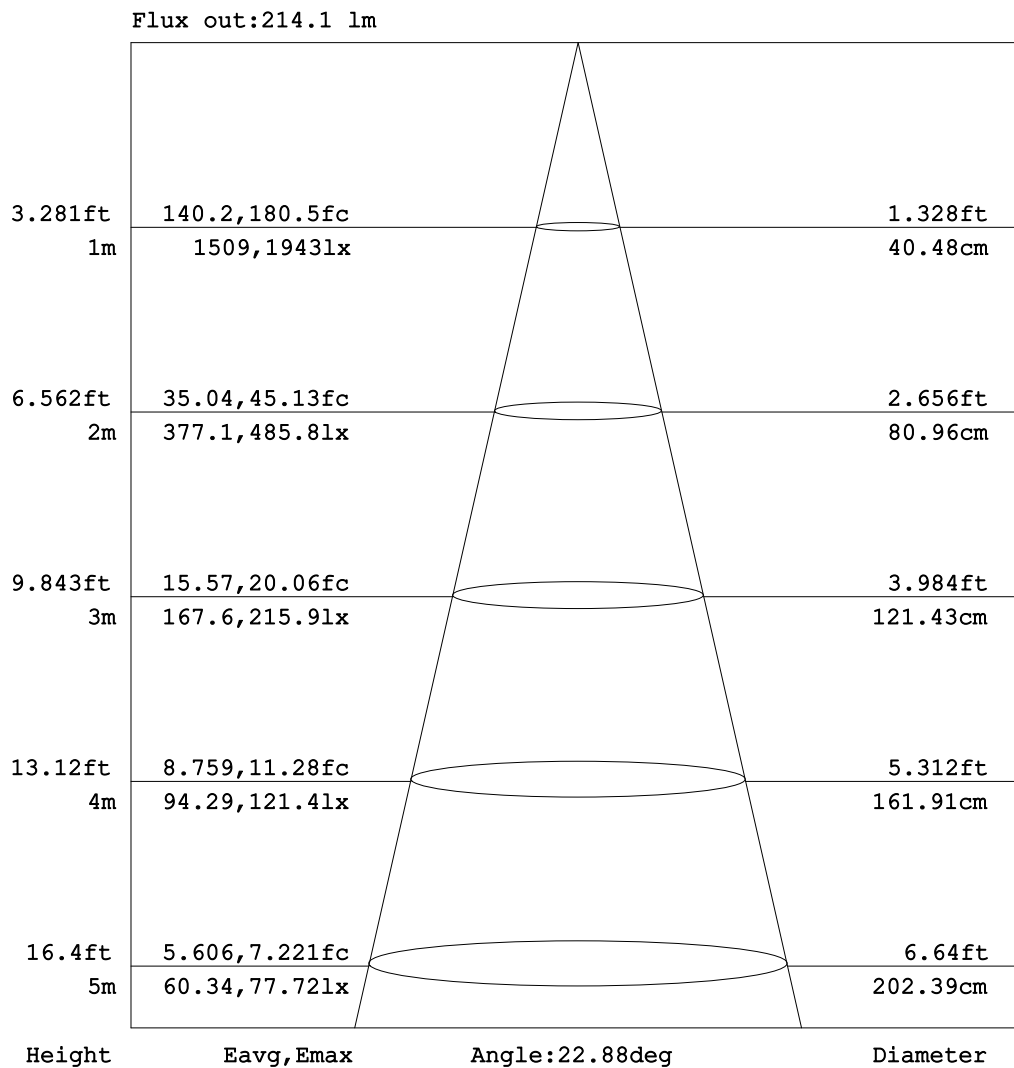


C Range: 0 - 360DEG
C Interval: 30.0DEG
Test Speed: HIGH
Temperature:25.3DEG
Operators:LYH
Test Date:2024-07-09

γ Range: 0 - 180DEG
 γ Interval: 1.0DEG
Test System:EVERFINE GO-2000B_V1 SYSTEM V2.0.269
Humidity:65.0%
Test Distance:10.000m [K=1.0000]
Remarks:

AAI Figure

Test:U:24.00V I:0.7616A P:18.28W PF:1.000 Lamp Flux:1179.27x1 lm		
NAME: SFW20-24V-3535-24-CC-3000K-80-2040	TYPE:	WEIGHT:
DIM.: Length=1m	SPEC.:	SERIAL No.:
MFR.:	SUR.:	PROTECTION ANGLE:



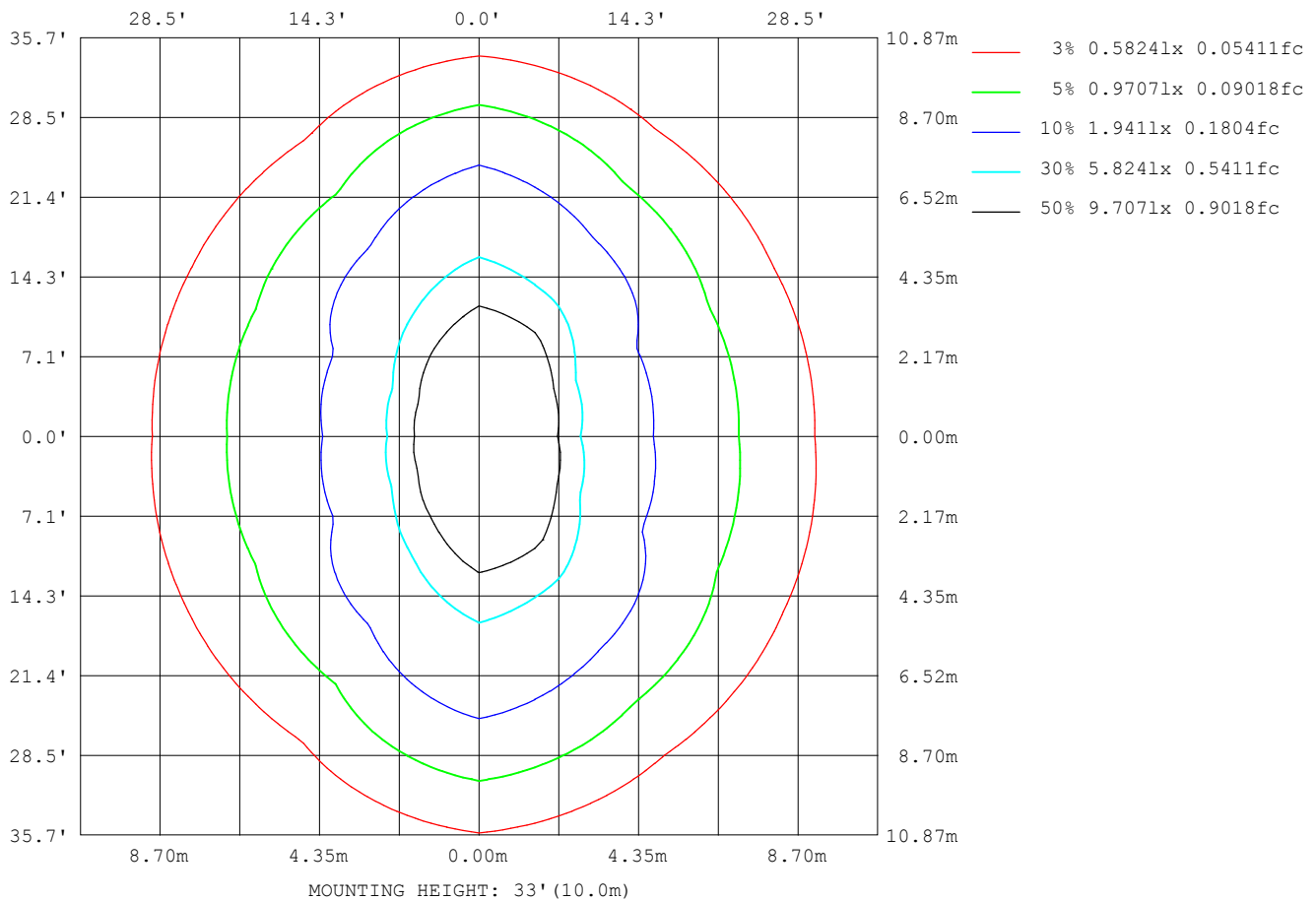
Note: The Curves indicate the illuminated area and the average illumination when the luminaire is at different distance.

C Range: 0 - 360DEG
C Interval: 30.0DEG
Test Speed: HIGH
Temperature: 25.3DEG
Operators: LYH
Test Date: 2024-07-09

γ Range: 0 - 180DEG
γ Interval: 1.0DEG
Test System: EVERFINE GO-2000B_V1 SYSTEM V2.0.269
Humidity: 65.0%
Test Distance: 10.000m [K=1.0000]
Remarks:

ISOLUX DIAGRAM

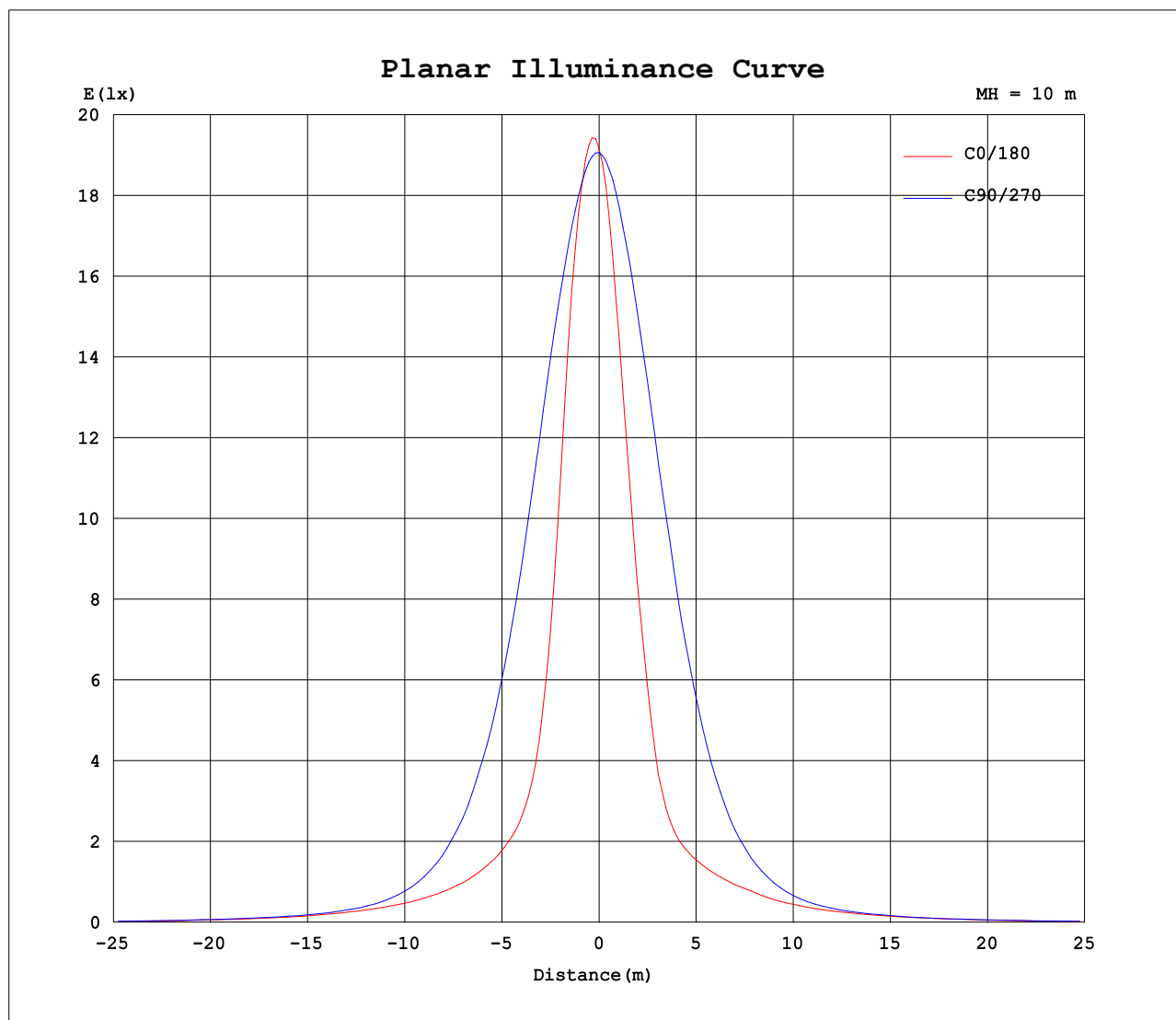
Test:U:24.00V I:0.7616A P:18.28W PF:1.000 Lamp Flux:1179.27x1 lm		
NAME: SFW20-24V-3535-24-CC-3000K-80-2040	TYPE:	WEIGHT:
DIM.: Length=1m	SPEC.:	SERIAL No.:
MFR.:	SUR.:	PROTECTION ANGLE:



C Range: 0 - 360DEG
C Interval: 30.0DEG
Test Speed: HIGH
Temperature:25.3DEG
Operators:LYH
Test Date:2024-07-09

γ Range: 0 - 180DEG
 γ Interval: 1.0DEG
Test System:EVERFINE GO-2000B_V1 SYSTEM V2.0.269
Humidity:65.0%
Test Distance:10.000m [K=1.0000]
Remarks:

Planar Illuminance Curve



C Range: 0 - 360DEG
C Interval: 30.0DEG
Test Speed: HIGH
Temperature: 25.3DEG
Operators: LYH
Test Date: 2024-07-09

γ Range: 0 - 180DEG
 γ Interval: 1.0DEG
Test System: EVERFINE GO-2000B_V1 SYSTEM V2.0.269
Humidity: 65.0%
Test Distance: 10.000m [K=1.0000]
Remarks:

LUMINOUS DISTRIBUTION INTENSITY DATA

Test:U:24.00V I:0.7616A P:18.28W PF:1.000 Lamp Flux:1179.27x1 lm		
NAME: SFW20-24V-3535-24-CC-3000K-80-2040	TYPE:	WEIGHT:
DIM.: Length=1m	SPEC.:	SERIAL No.:
MFR.:	SUR.:	PROTECTION ANGLE:

Table--1

UNIT: cd

C (DEG) γ (DEG)	0	30	60	90	120	150	180	210	240	270	300	330						
0	1919	1910	1910	1906	1904	1907	1919	1910	1910	1906	1904	1907						
5	1851	1892	1908	1854	1723	1606	1562	1596	1720	1828	1881	1865						
10	1342	1527	1728	1699	1398	1110	1012	1092	1402	1651	1677	1477						
15	691	928	1419	1483	1037	678	560	657	1043	1416	1340	866						
20	374	501	1036	1202	723	375	306	368	729	1140	946	452						
25	269	313	697	921	489	249	229	250	491	860	609	290						
30	216	238	455	677	326	207	195	209	325	611	381	224						
35	180	199	304	473	231	178	171	177	226	417	250	186						
40	155	172	218	323	180	157	149	152	172	282	186	158						
45	135	149	168	220	150	139	126	133	140	190	150	140						
50	119	127	137	155	129	119	110	115	119	135	126	123						
55	102	107	112	119	110	101	95.4	97.2	102	106	107	104						
60	84.2	87.9	90.9	95.3	90.8	84.3	79.6	80.2	83.2	85.7	87.7	85.2						
65	66.8	70.3	72.1	75.8	71.5	67.5	62.6	63.2	65.3	68.4	68.6	66.8						
70	49.7	53.0	54.3	57.3	53.4	50.6	45.4	46.2	48.6	51.3	50.8	49.1						
75	34.0	36.3	38.2	40.4	37.2	34.4	29.7	30.1	33.2	35.1	34.7	32.3						
80	21.1	22.5	24.1	25.4	23.4	21.6	17.7	17.8	20.3	21.3	21.3	19.0						
85	10.9	11.7	12.6	13.2	12.4	11.5	8.02	8.19	10.0	10.5	10.5	8.73						
90	4.28	4.29	4.50	4.66	4.57	4.31	1.48	1.60	1.86	2.02	1.75	1.49						
95	4.24	4.30	4.49	4.74	4.57	4.30	1.77	1.84	2.17	2.28	2.05	1.68						
100	4.24	4.34	4.57	4.86	4.58	4.31	2.06	2.18	2.55	2.66	2.40	1.99						
105	4.24	4.43	4.68	4.99	4.68	4.36	2.39	2.56	2.99	3.07	2.82	2.32						
110	4.30	4.52	4.87	5.16	4.84	4.48	2.75	3.02	3.50	3.55	3.29	2.72						
115	4.41	4.68	5.12	5.43	5.13	4.70	3.22	3.59	4.07	4.08	3.83	3.21						
120	4.58	4.91	5.44	5.80	5.53	5.07	3.91	4.28	4.69	4.69	4.43	3.81						
125	4.94	5.30	5.91	6.27	6.05	5.60	4.85	5.11	5.35	5.30	5.07	4.55						
130	5.54	5.88	6.45	6.79	6.69	6.33	5.84	5.93	6.03	5.94	5.73	5.37						
135	6.40	6.62	7.10	7.36	7.36	7.18	6.76	6.72	6.70	6.55	6.44	6.20						
140	7.42	7.45	7.77	7.94	8.08	8.05	7.46	7.39	7.35	7.14	7.10	6.94						
145	8.46	8.32	8.40	8.46	8.74	8.93	7.96	7.94	7.93	7.63	7.66	7.53						
150	9.37	9.15	8.96	8.94	9.33	9.69	8.31	8.39	8.44	8.05	8.12	8.00						
155	10.1	9.81	9.35	9.32	9.78	10.3	8.64	8.80	8.86	8.37	8.39	8.34						
160	10.6	10.2	9.60	9.61	10.1	10.6	8.93	9.14	9.20	8.70	8.58	8.57						
165	10.7	10.2	9.73	9.82	10.2	10.6	9.08	9.37	9.45	9.04	8.75	8.67						
170	10.5	10.0	9.85	9.98	10.2	10.3	9.05	9.47	9.66	9.37	9.02	8.68						
175	9.96	9.77	9.94	10.1	10.1	9.86	9.04	9.51	9.88	9.73	9.43	8.86						
180	9.48	9.69	10.1	10.1	9.91	9.42	9.46	9.69	10.1	10.1	9.92	9.39						

C Range: 0 - 360DEG
C Interval: 30.0DEG
Test Speed: HIGH
Temperature:25.3DEG
Operators:LYH
Test Date:2024-07-09

γ Range: 0 - 180DEG
γ Interval: 1.0DEG
Test System:EVERFINE GO-2000B_V1 SYSTEM V2.0.269
Humidity:65.0%
Test Distance:10.000m [K=1.0000]
Remarks:

Photometric Data Table [cd]

G/C	0.0	30.0	60.0	90.0	120.0	150.0	180.0	210.0	240.0	270.0
0.0	1919	1910	1910	1906	1904	1907	1919	1910	1910	1906
3.0	1932	1941	1933	1890	1819	1761	1753	1756	1817	1873
6.0	1786	1848	1884	1830	1666	1514	1461	1502	1662	1798
9.0	1485	1628	1778	1738	1472	1208	1127	1197	1470	1694
12.0	1046	1297	1618	1621	1253	922.4	815.1	905.7	1258	1560
15.0	691.3	927.8	1419	1483	1037	678.2	560.1	656.6	1043	1416
18.0	460.8	635.7	1191	1317	841.2	467.5	377.1	461.9	846.1	1246
21.0	344.5	448.1	959.1	1142	668.9	333.0	282.5	333.4	675.4	1078
24.0	282.7	336.2	758.5	976.8	529.1	264.8	238.7	265.0	532.3	909.1
27.0	244.3	275.6	590.4	820.1	414.4	227.4	213.7	229.4	416.7	754.9
30.0	216.3	238.4	455.2	677.2	325.8	207.1	195.3	209.1	325.3	611.4
33.0	193.5	212.9	355.2	550.7	261.7	189.2	180.4	189.8	259.2	489.1
36.0	175.1	192.7	283.4	440.7	218.6	173.0	167.2	171.4	212.1	387.1
39.0	160.0	176.6	231.3	347.1	187.8	160.8	154.5	156.3	179.8	303.9
42.0	147.3	162.5	194.7	276.9	166.3	149.9	138.6	144.7	157.2	239.2
45.0	135.4	149.0	167.7	219.8	150.0	139.0	125.9	133.2	140.2	189.5
48.0	125.3	135.7	147.6	175.8	137.2	126.9	115.8	122.1	127.0	151.3
51.0	116.1	123.2	131.3	146.0	125.7	115.4	107.1	111.4	116.0	127.1
54.0	105.3	110.8	116.8	124.4	114.3	104.4	98.44	100.3	105.2	110.1
57.0	94.76	99.09	103.3	108.3	102.3	94.40	89.22	90.06	94.35	96.88
60.0	84.17	87.92	90.92	95.26	90.78	84.28	79.58	80.17	83.25	85.68
63.0	73.68	77.55	79.51	83.34	79.12	74.17	69.42	69.85	72.42	74.73
66.0	63.33	66.71	68.39	72.05	67.82	64.14	59.16	59.64	61.88	64.77
69.0	53.05	56.56	57.72	60.90	56.87	53.83	48.79	49.84	51.86	54.89
72.0	43.24	46.24	47.69	50.18	46.71	43.88	38.84	39.42	42.14	44.66
75.0	33.99	36.31	38.18	40.41	37.21	34.44	29.66	30.11	33.15	35.07
78.0	25.81	27.54	29.34	31.02	28.53	26.45	22.01	22.43	25.11	26.91
81.0	18.96	20.30	21.56	22.62	20.96	19.30	15.67	15.79	18.05	18.88
84.0	12.98	13.84	14.74	15.43	14.40	13.58	9.957	10.20	11.89	12.58
87.0	6.523	7.256	8.247	8.905	8.081	7.036	3.894	4.113	6.293	6.723
90.0	4.280	4.285	4.496	4.659	4.575	4.310	1.484	1.601	1.858	2.020
93.0	4.255	4.298	4.488	4.702	4.567	4.304	1.650	1.716	2.030	2.108
96.0	4.242	4.304	4.524	4.770	4.573	4.304	1.828	1.900	2.245	2.341
99.0	4.236	4.328	4.567	4.837	4.573	4.316	2.017	2.090	2.478	2.580
102.0	4.236	4.371	4.628	4.899	4.647	4.328	2.189	2.311	2.723	2.826
105.0	4.236	4.426	4.684	4.991	4.677	4.359	2.386	2.562	2.993	3.071
108.0	4.261	4.482	4.788	5.083	4.769	4.427	2.594	2.813	3.287	3.334
111.0	4.346	4.549	4.934	5.205	4.892	4.512	2.833	3.132	3.606	3.635
114.0	4.383	4.641	5.051	5.371	5.057	4.647	3.109	3.457	3.949	3.972
117.0	4.463	4.758	5.223	5.561	5.253	4.825	3.459	3.873	4.311	4.321
120.0	4.579	4.911	5.443	5.800	5.529	5.071	3.913	4.284	4.685	4.689
123.0	4.775	5.132	5.719	6.052	5.823	5.359	4.447	4.768	5.084	5.069
126.0	5.038	5.408	6.007	6.358	6.172	5.752	5.048	5.247	5.476	5.437
129.0	5.412	5.746	6.344	6.677	6.552	6.175	5.649	5.761	5.881	5.823
132.0	5.859	6.162	6.705	7.014	6.944	6.647	6.237	6.258	6.298	6.209
135.0	6.398	6.616	7.104	7.364	7.361	7.180	6.758	6.718	6.702	6.553
138.0	7.005	7.113	7.502	7.713	7.791	7.720	7.205	7.129	7.095	6.939
141.0	7.636	7.635	7.907	8.045	8.213	8.241	7.573	7.503	7.469	7.227
144.0	8.256	8.173	8.287	8.363	8.612	8.762	7.873	7.840	7.818	7.540
147.0	8.844	8.664	8.649	8.663	8.992	9.252	8.118	8.141	8.155	7.797
150.0	9.366	9.148	8.956	8.939	9.330	9.694	8.314	8.392	8.437	8.049
153.0	9.826	9.577	9.232	9.178	9.636	10.08	8.504	8.649	8.713	8.251
156.0	10.23	9.914	9.428	9.380	9.851	10.37	8.700	8.870	8.939	8.459
159.0	10.51	10.17	9.563	9.558	10.04	10.57	8.878	9.073	9.148	8.631
162.0	10.69	10.24	9.662	9.705	10.13	10.64	9.019	9.251	9.313	8.821
165.0	10.73	10.22	9.729	9.822	10.15	10.58	9.079	9.373	9.448	9.036
168.0	10.69	10.12	9.778	9.938	10.16	10.45	9.079	9.460	9.577	9.256
171.0	10.42	9.943	9.858	10.02	10.16	10.23	9.018	9.478	9.711	9.447
174.0	10.07	9.809	9.925	10.09	10.12	9.931	9.018	9.496	9.834	9.661
177.0	9.749	9.729	9.993	10.08	10.04	9.661	9.166	9.558	9.987	9.870
180.0	9.484	9.693	10.06	10.08	9.913	9.423	9.460	9.686	10.06	10.06
G/C	300.0	330.0								
0.0	1904	1907								
3.0	1914	1922								
6.0	1853	1811								
9.0	1730	1574								
12.0	1555	1221								
15.0	1340	866.1								
18.0	1103	572.1								
21.0	871.4	402.9								
24.0	668.8	311.3								
27.0	503.2	257.6								
30.0	380.9	223.6								

C Range: 0 - 360DEG
 C Interval: 30.0DEG
 Test Speed: HIGH
 Temperature: 25.3DEG
 Operators: LYH
 Test Date: 2024-07-09

γ Range: 0 - 180DEG
 γ Interval: 1.0DEG
 Test System: EVERFINE GO-2000B_V1 SYSTEM V2.0.269
 Humidity: 65.0%
 Test Distance: 10.000m [K=1.0000]
 Remarks:

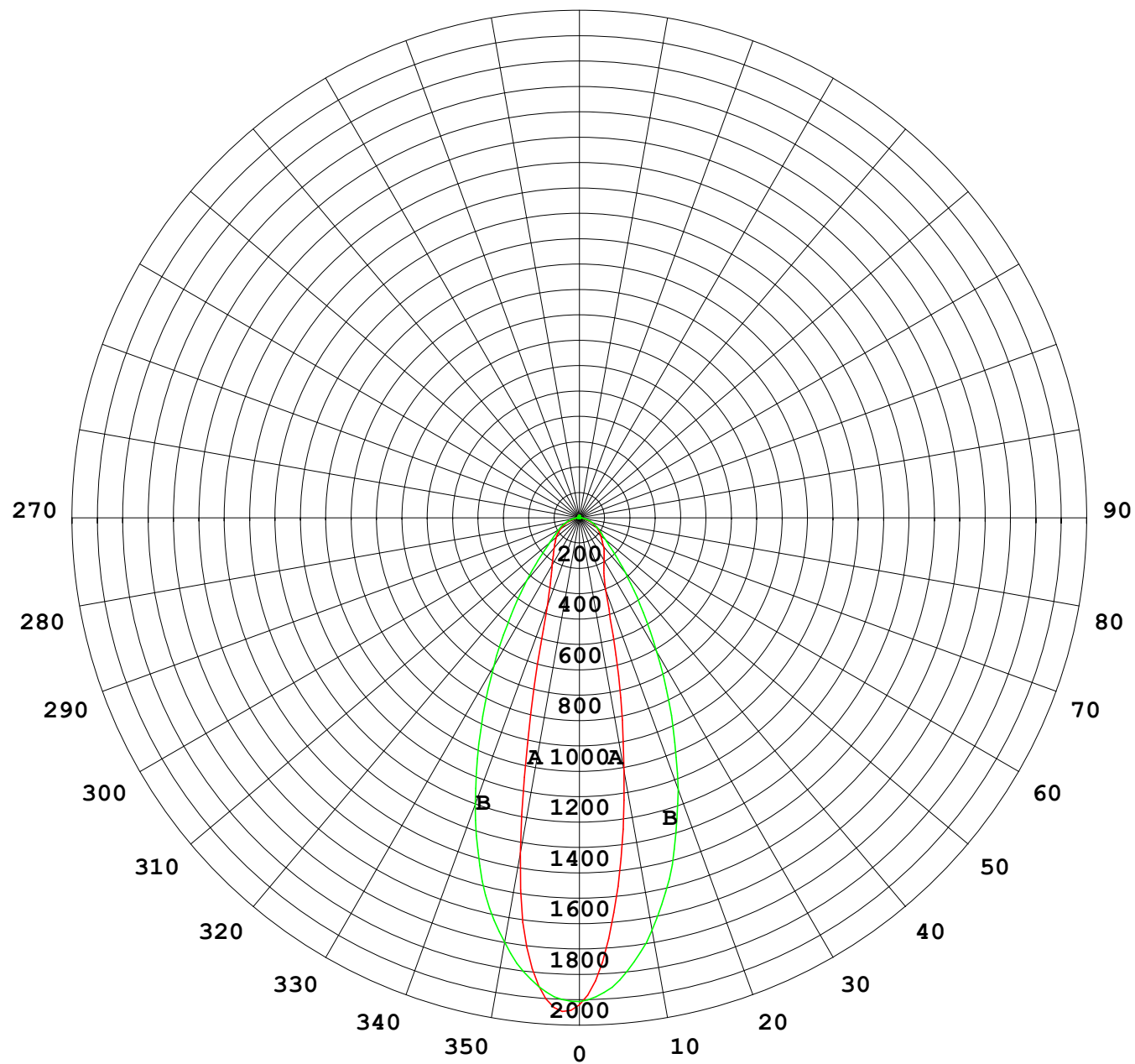
Photometric Data Table [cd]

33.0	291.7	200.1
36.0	233.8	180.2
39.0	196.0	163.2
42.0	169.8	150.8
45.0	150.3	139.9
48.0	135.1	129.6
51.0	122.3	119.0
54.0	110.9	107.7
57.0	99.51	96.00
60.0	87.68	85.16
63.0	75.91	73.83
66.0	64.92	62.82
69.0	54.23	52.54
72.0	44.08	42.02
75.0	34.71	32.29
78.0	26.24	24.13
81.0	18.92	16.80
84.0	12.49	10.80
87.0	6.679	4.458
90.0	1.754	1.491
93.0	1.932	1.587
96.0	2.110	1.741
99.0	2.324	1.918
102.0	2.558	2.102
105.0	2.821	2.317
108.0	3.097	2.549
111.0	3.391	2.807
114.0	3.716	3.089
117.0	4.060	3.438
120.0	4.427	3.812
123.0	4.814	4.247
126.0	5.194	4.719
129.0	5.599	5.203
132.0	6.016	5.724
135.0	6.439	6.197
138.0	6.837	6.681
141.0	7.223	7.098
144.0	7.560	7.423
147.0	7.861	7.754
150.0	8.124	8.000
153.0	8.308	8.221
156.0	8.430	8.392
159.0	8.553	8.546
162.0	8.639	8.619
165.0	8.755	8.669
168.0	8.908	8.681
171.0	9.093	8.687
174.0	9.338	8.779
177.0	9.614	9.042
180.0	9.919	9.386

C Range: 0 - 360DEG
C Interval: 30.0DEG
Test Speed: HIGH
Temperature:25.3DEG
Operators:LYH
Test Date:2024-07-09

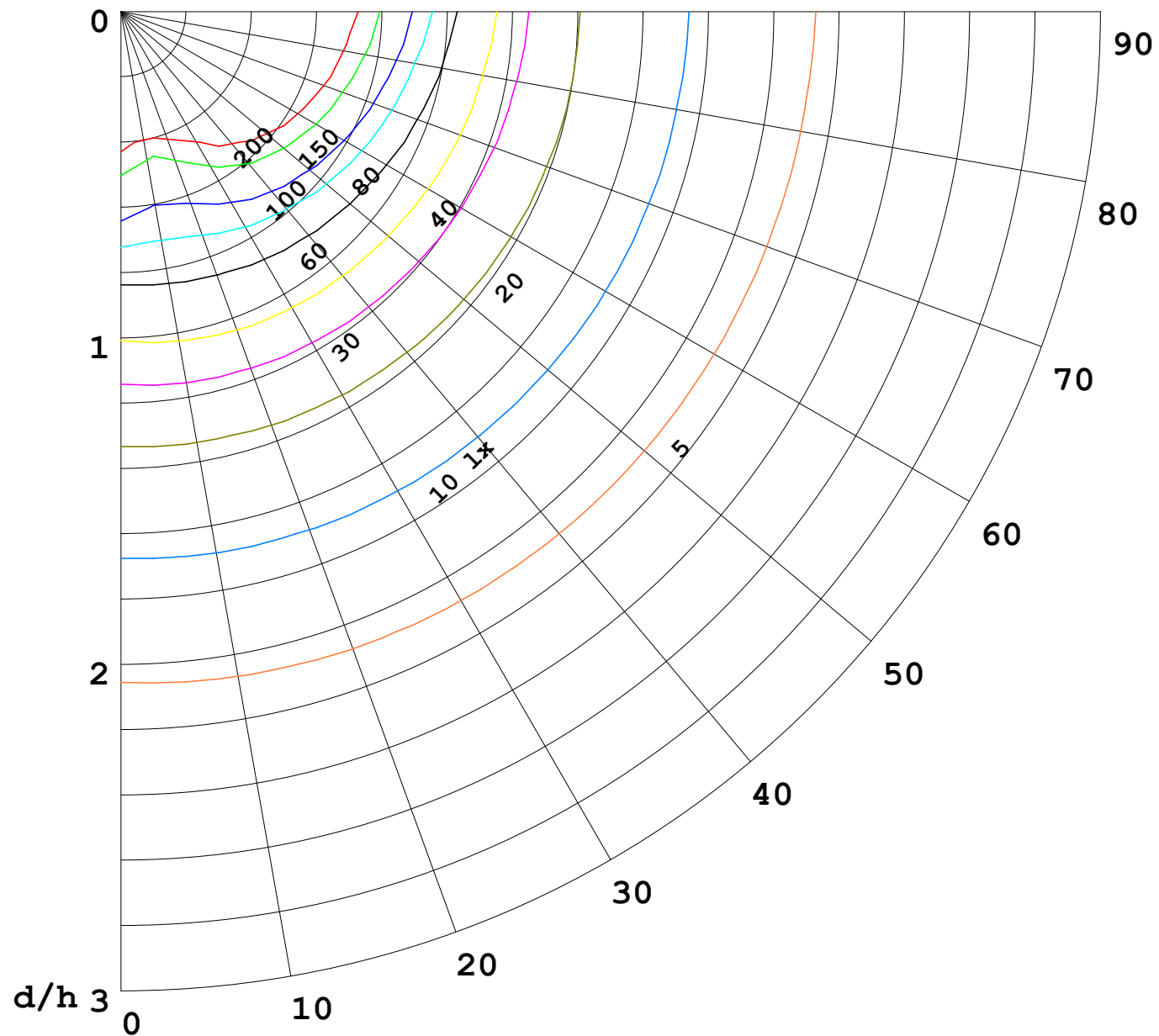
γ Range: 0 - 180DEG
γ Interval: 1.0DEG
Test System:EVERFINE GO-2000B_V1 SYSTEM V2.0.269
Humidity:65.0%
Test Distance:10.000m [K=1.0000]
Remarks:

I (cd)



1000 lm

$\kappa = 1$



F = 5000 lm
 K = 0.7
 Hcc = 0.0 m
 Hfc = 0.0 m
 Eave = 100 lx

	Pcc	Pw	Pfc
—	70	50	30
—	50	30	20

