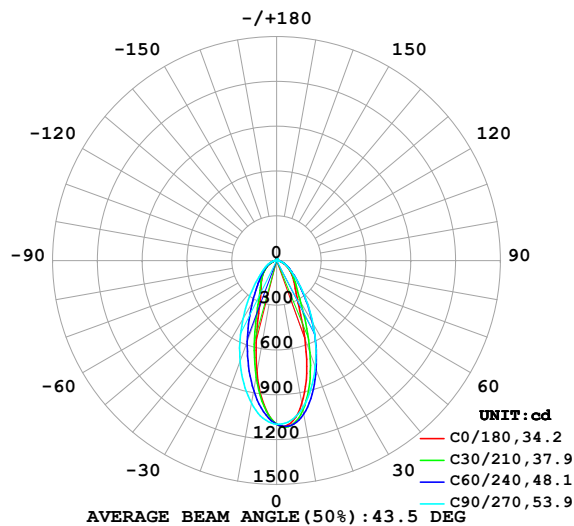


LUMINAIRE PHOTOMETRIC TEST REPORT

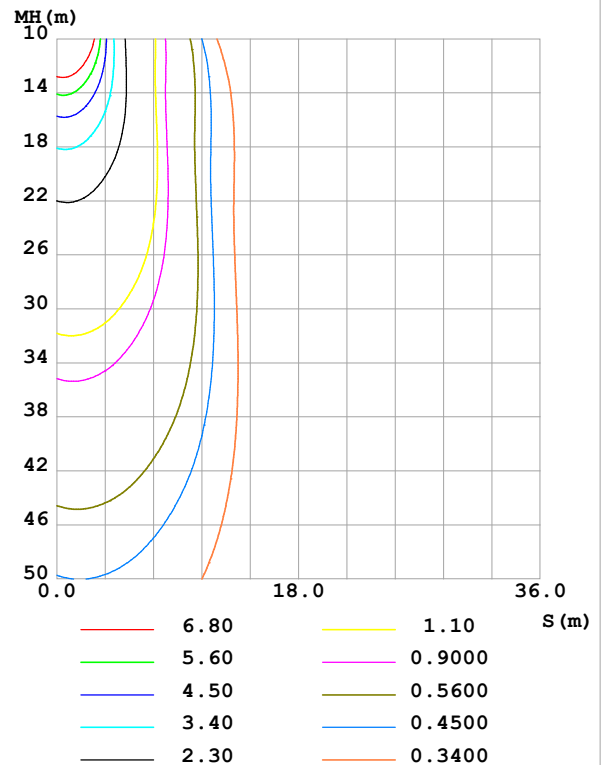
Test:U:24.00V I:0.7567A P:18.16W PF:1.000 Freq:0Hz Lamp Flux:1037.34x1 lm		
NAME: SFW20-24V-3535-24-CC-2700K-90-2040	TYPE:	WEIGHT:
SPEC.:	DIM.: Length=1m	SERIAL No.:
MFR.: OLympia lighting	SUR.:	Shielding Angle:

DATA OF LAMP		PHOTOMETRIC DATA				Eff: 57.12 lm/W
MODEL	3535	I _{max} (cd)	1118	S/MH(C0/180)	0.48	
NOMINAL POWER(W)	18	LOR(%)	100.0	S/MH(C90/270)	0.79	
RATED VOLTAGE(V)	24	TOTAL FLUX(lm)	1037.3	η UP,DN(C0-180)	1.9,49.7	
NOMINAL FLUX(lm)	1037.34	CIE CLASS	DIRECT	η UP,DN(C180-360)	1.8,46.5	
LAMPS INSIDE	1	η up (%)	3.7	CIBSE SHR NOM	0.50	
TEST VOLTAGE(V)		η down (%)	96.3	CIBSE SHR MAX	0.70	

LUMINOUS INTENSITY DISTRIBUTION DIAGRAM



C0 PLANE ISOLUX DIAGRAM (UNIT:lx)



C Range: 0 - 360DEG
C Interval: 30.0DEG
Test Speed: HIGH
Temperature:25.3℃
Operators:
Test Date:2025-02-27

γ Range: 0 - 180DEG
γ Interval: 1.0DEG
Test System:EVERFINE GO-2000B_V1 SYSTEM V2.00.488
Humidity:65.0%
Test Distance:6.360m [K=1.0000]
Remarks:

ZONAL FLUX DIAGRAM

ZONAL FLUX DIAGRAM:

γ	C0	C45	C90	C135	C180	C225	C270	C315	γ	Φ zone	Φ total	%lum, lamp
10	973.7	1031	1004	839.8	763.3	839.1	971.6	1007	0- 10	96.37	96.37	9.29,9.29
20	551.7	715.4	757.4	475.5	346.3	487.3	717.5	680.6	10- 20	210.6	306.9	29.6,29.6
30	268.8	403.8	487.5	270.1	211.7	273.8	451.5	372.9	20- 30	205.7	512.6	49.4,49.4
40	182.3	232.7	276.3	175.7	155.8	172.2	252.6	214.6	30- 40	164.4	677.0	65.3,65.3
50	126.5	142.4	147.2	119.6	110.2	113.4	138.6	135.4	40- 50	125.6	802.6	77.4,77.4
60	82.70	88.29	87.73	75.88	69.50	73.58	86.08	87.49	50- 60	92.55	895.2	86.3,86.3
70	44.24	48.46	47.77	38.63	33.31	38.70	47.89	49.86	60- 70	61.33	956.5	92.2,92.2
80	18.81	20.27	18.28	15.49	14.73	15.23	18.65	20.35	70- 80	30.97	987.5	95.2,95.2
90	6.798	6.084	3.490	4.253	4.581	4.169	3.619	5.891	80- 90	11.30	998.8	96.3,96.3
100	4.095	4.079	4.071	4.053	3.580	3.893	4.076	3.924	90-100	4.455	1003	96.7,96.7
110	4.418	4.602	4.913	4.874	4.260	4.640	4.778	4.383	100-110	4.500	1008	97.1,97.1
120	5.299	5.564	5.996	6.137	5.452	5.701	5.684	5.242	110-120	5.055	1013	97.6,97.6
130	6.745	6.865	7.166	7.597	6.820	6.855	6.648	6.326	120-130	5.605	1018	98.2,98.2
140	8.332	8.189	8.229	8.869	7.857	7.841	7.507	7.356	130-140	5.782	1024	98.7,98.7
150	9.544	9.194	9.039	9.691	8.496	8.590	8.193	8.143	140-150	5.319	1030	99.2,99.2
160	10.06	9.679	9.596	10.000	8.931	9.131	8.779	8.652	150-160	4.227	1034	99.7,99.7
170	9.872	9.739	9.973	9.896	9.133	9.506	9.496	9.064	160-170	2.683	1036	99.9,99.9
180	9.514	9.862	10.11	9.725	9.525	9.856	10.08	9.716	170-180	0.9202	1037	100,100
DEG	LUMINOUS INTENSITY:cd									UNIT:lm		

Conical surface Flux(90deg): 744.37 lm

%lum = 71.8%

%lamp = 71.8%

Conical surface Flux(130deg): 929.91 lm

%lum = 89.6%

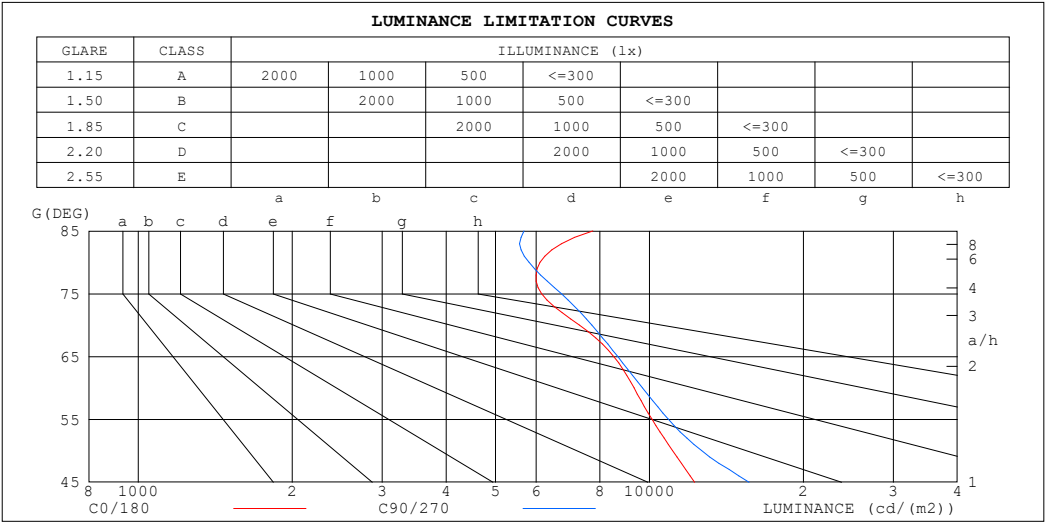
%lamp = 89.6%

C Range: 0 - 360DEG
 C Interval: 30.0DEG
 Test Speed: HIGH
 Temperature:25.3℃
 Operators:
 Test Date:2025-02-27

γ Range: 0 - 180DEG
 γ Interval: 1.0DEG
 Test System:EVERFINE GO-2000B_V1 SYSTEM V2.00.488
 Humidity:65.0%
 Test Distance:6.360m [K=1.0000]
 Remarks:

LUMINANCE LIMITATION CURVES

Test:U:24.00V I:0.7567A P:18.16W PF:1.000 Freq:0Hz Lamp Flux:1037.34x1 lm		
NAME: SFW20-24V-3535-24-CC-2700K-90-2040	TYPE:	WEIGHT:
SPEC.:	DIM.: Length=1m	SERIAL No.:
MFR.: OLympia lighting	SUR.:	Shielding Angle:



LUMINANCE cd/(m2)		
G (DEG)	C0/180	C90/270
85	7748	5683
80	6110	5815
75	6152	6721
70	7295	7714
65	8513	8666
60	9328	9691
55	10109	10880
50	11097	12647
45	12245	15663

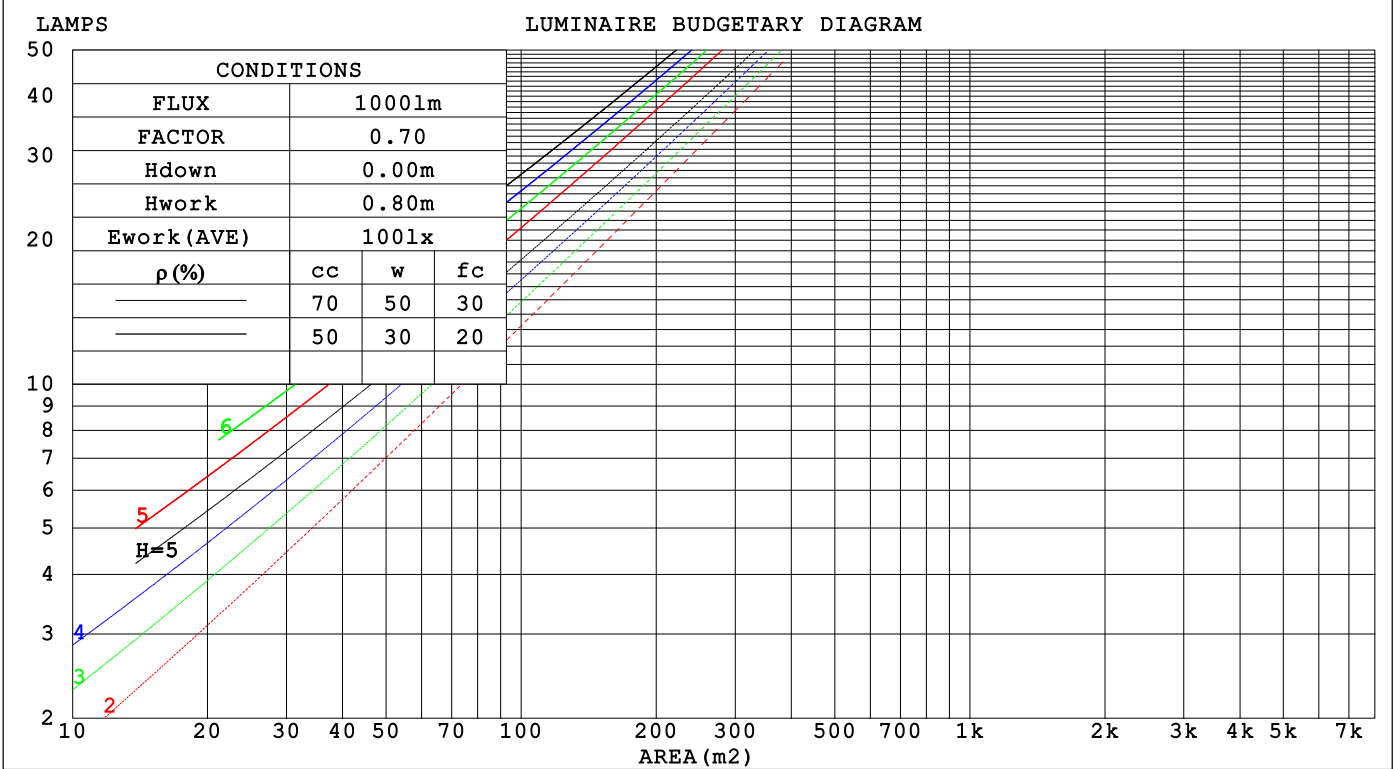
C Range: 0 - 360DEG
C Interval: 30.0DEG
Test Speed: HIGH
Temperature:25.3℃
Operators:
Test Date:2025-02-27

γ Range: 0 - 180DEG
γ Interval: 1.0DEG
Test System:EVERFINE GO-2000B_V1 SYSTEM V2.00.488
Humidity:65.0%
Test Distance:6.360m [K=1.0000]
Remarks:

CU AND LUMINAIRE BUDGETARY ESTIMATE DIAGRAM

Test:U:24.00V I:0.7567A P:18.16W PF:1.000 Freq:0Hz		
Lamp Flux:1037.34x1 lm		
NAME: SFW20-24V-3535-24-CC-2700K-90-2040	TYPE:	WEIGHT:
SPEC.:	DIM.: Length=1m	SERIAL No.:
MFR.: OLYMPIA lighting	SUR.:	Shielding Angle:

pcc	80%			70%			50%			30%			10%			0
p _w	50%	30%	10%	50%	30%	10%	50%	30%	10%	50%	30%	10%	50%	30%	10%	0
p _{fc}	20%			20%			20%			20%			20%			0
RCR	RCR:Room Cavity Ratio															

C Range: 0 - 360DEG
C Interval: 30.0DEG
Test Speed: HIGH
Temperature:25.3℃
Operators:
Test Date:2025-02-27γ Range: 0 - 180DEG
γ Interval: 1.0DEG
Test System:EVERFINE GO-2000B_V1 SYSTEM V2.00.488
Humidity:65.0%
Test Distance:6.360m [K=1.0000]
Remarks:

WEC AND CCEC

Test:U:24.00V I:0.7567A P:18.16W PF:1.000 Freq:0Hz Lamp Flux:1037.34x1 lm		
NAME: SFW20-24V-3535-24-CC-2700K-90-2040	TYPE:	WEIGHT:
SPEC.:	DIM.: Length=1m	SERIAL No.:
MFR.: OLympia lighting	SUR.:	Shielding Angle:

pcc	80%			70%			50%			30%			10%			0														
pw	50%	30%	10%	50%	30%	10%	50%	30%	10%	50%	30%	10%	50%	30%	10%	0														
pfc	20%			20%			20%			20%			20%			0														
RCR	RCR:Room Cavity Ratio															Wall Exitance Coefficients(WEC)														
0.0																														
1.0	.240	.137	.043	.232	.133	.042	.217	.125	.040	.204	.117	.038	.191	.111	.036															
2.0	.227	.124	.038	.220	.121	.037	.207	.115	.036	.195	.109	.034	.184	.104	.033															
3.0	.212	.113	.034	.206	.110	.033	.194	.105	.032	.184	.101	.031	.174	.096	.030															
4.0	.198	.103	.030	.193	.101	.030	.182	.097	.029	.173	.093	.028	.164	.089	.027															
5.0	.185	.094	.027	.180	.093	.027	.171	.089	.026	.163	.086	.026	.155	.083	.025															
6.0	.173	.087	.025	.169	.085	.025	.161	.083	.024	.154	.080	.023	.147	.077	.023															
7.0	.163	.081	.023	.159	.079	.023	.152	.077	.022	.145	.074	.022	.139	.072	.021															
8.0	.154	.075	.021	.150	.074	.021	.144	.072	.021	.138	.070	.020	.132	.068	.020															
9.0	.145	.070	.020	.142	.069	.019	.136	.067	.019	.131	.065	.019	.125	.064	.018															
10.0	.138	.066	.018	.135	.065	.018	.129	.063	.018	.124	.062	.018	.120	.060	.017															

pcc	80%			70%			50%			30%			10%			0
pw	50%	30%	10%	50%	30%	10%	50%	30%	10%	50%	30%	10%	50%	30%	10%	0
pfc	20%			20%			20%			20%			20%			0
RCR	RCR:Room Cavity Ratio						Ceiling Cavity Exitance Coefficients (CCEC)									
0.0	.219	.219	.219	.187	.187	.187	.128	.128	.128	.073	.073	.073	.023	.023	.023	
1.0	.204	.185	.168	.175	.159	.145	.119	.109	.100	.069	.063	.058	.022	.020	.019	
2.0	.192	.161	.135	.165	.139	.116	.113	.096	.081	.065	.056	.048	.021	.018	.016	
3.0	.182	.143	.111	.156	.123	.097	.107	.086	.068	.062	.050	.040	.020	.016	.013	
4.0	.173	.129	.095	.149	.111	.083	.102	.078	.058	.059	.045	.034	.019	.015	.011	
5.0	.165	.118	.083	.142	.102	.072	.098	.071	.051	.057	.042	.030	.018	.014	.010	
6.0	.158	.109	.074	.136	.094	.065	.094	.066	.046	.054	.039	.027	.018	.013	.009	
7.0	.151	.102	.067	.130	.088	.059	.090	.062	.042	.052	.036	.025	.017	.012	.008	
8.0	.145	.096	.062	.125	.083	.054	.086	.058	.038	.050	.034	.023	.016	.011	.008	
9.0	.139	.091	.058	.120	.079	.051	.083	.055	.036	.048	.033	.021	.016	.011	.007	
10.0	.134	.087	.055	.116	.075	.048	.080	.053	.034	.047	.031	.020	.015	.010	.007	

C Range: 0 - 360DEG
C Interval: 30.0DEG
Test Speed: HIGH
Temperature:25.3℃
Operators:
Test Date:2025-02-27

γ Range: 0 - 180DEG
γ Interval: 1.0DEG
Test System:EVERFINE GO-2000B_V1 SYSTEM V2.00.488
Humidity:65.0%
Test Distance:6.360m [K=1.0000]
Remarks:

UGR(Unified Glare Rating) Table

Test:U:24.00V I:0.7567A P:18.16W PF:1.000 Freq:0Hz Lamp Flux:1037.34x1 lm										
NAME: SFW20-24V-3535-24-CC-2700K-90-2040					TYPE:			WEIGHT:		
SPEC.:					DIM.: Length=1m			SERIAL No.:		
MFR.: OLympia lighting					SUR.:			Shielding Angle:		
ceiling/cavity	0.7	0.7	0.5	0.5	0.3	0.7	0.7	0.5	0.5	0.3
walls	0.5	0.3	0.5	0.3	0.3	0.5	0.3	0.5	0.3	0.3
working plane	0.2	0.2	0.2	0.2	0.2	0.2	0.2	0.2	0.2	0.2
Room dimensions	Viewed crosswise					Viewed endwise				
x = 2H y = 2H	19.2	20.3	19.5	20.6	20.8	20.0	21.2	20.3	21.5	21.7
3H	20.2	21.3	20.5	21.6	21.8	20.9	22.0	21.2	22.2	22.5
4H	20.5	21.6	20.9	21.9	22.2	21.2	22.2	21.6	22.5	22.8
6H	20.8	21.8	21.2	22.1	22.4	21.4	22.4	21.8	22.7	23.0
8H	20.9	21.9	21.3	22.2	22.5	21.5	22.4	21.9	22.8	23.1
12H	21.1	22.0	21.5	22.3	22.7	21.5	22.4	21.9	22.8	23.1
4H 2H	19.7	20.7	20.0	21.0	21.3	20.4	21.4	20.7	21.7	22.0
3H	20.9	21.7	21.3	22.1	22.5	21.4	22.3	21.8	22.6	23.0
4H	21.3	22.1	21.7	22.5	22.9	21.8	22.7	22.3	23.0	23.4
6H	21.7	22.4	22.1	22.8	23.2	22.2	22.9	22.6	23.3	23.7
8H	21.9	22.5	22.3	23.0	23.4	22.3	23.0	22.8	23.4	23.8
12H	22.1	22.7	22.5	23.1	23.6	22.4	23.0	22.9	23.4	23.9
8H 4H	21.5	22.1	21.9	22.6	23.0	22.0	22.6	22.4	23.1	23.5
6H	22.0	22.6	22.5	23.0	23.5	22.5	23.0	22.9	23.5	24.0
8H	22.3	22.8	22.8	23.3	23.8	22.7	23.1	23.2	23.6	24.1
12H	22.6	23.0	23.1	23.5	24.1	22.8	23.2	23.4	23.8	24.3
12H 4H	21.5	22.1	22.0	22.5	23.0	22.0	22.6	22.4	23.0	23.5
6H	22.1	22.5	22.6	23.0	23.6	22.5	23.0	23.0	23.5	24.0
8H	22.4	22.8	22.9	23.3	23.9	22.7	23.1	23.3	23.7	24.2
Variations with the observer position at spacings(CIE Pub.117):										
S = 1.0H	+ 0.3 / - 0.4					+ 0.4 / - 0.5				
1.5H	+ 0.1 / - 0.3					+ 0.5 / - 0.4				
2.0H	+ 0.3 / - 0.4					+ 0.7 / - 0.5				

CIE Pub.117, 1037 lm Total Lamp Luminous Flux Correct ($8\log(F/F_0) = 0.1$)
Area: 0.018 m²

C Range: 0 - 360DEG
C Interval: 30.0DEG
Test Speed: HIGH
Temperature:25.3℃
Operators:
Test Date:2025-02-27

γ Range: 0 - 180DEG
γ Interval: 1.0DEG
Test System:EVERFINE GO-2000B_V1 SYSTEM V2.00.488
Humidity:65.0%
Test Distance:6.360m [K=1.0000]
Remarks:

UTILIZATION FACTORS TABLE

Test:U:24.00V I:0.7567A P:18.16W PF:1.000 Freq:0Hz Lamp Flux:1037.34x1 lm		
NAME: SFW20-24V-3535-24-CC-2700K-90-2040	TYPE:	WEIGHT:
SPEC.:	DIM.: Length=1m	SERIAL No.:
MFR.: OLympia lighting	SUR.:	Shielding Angle:

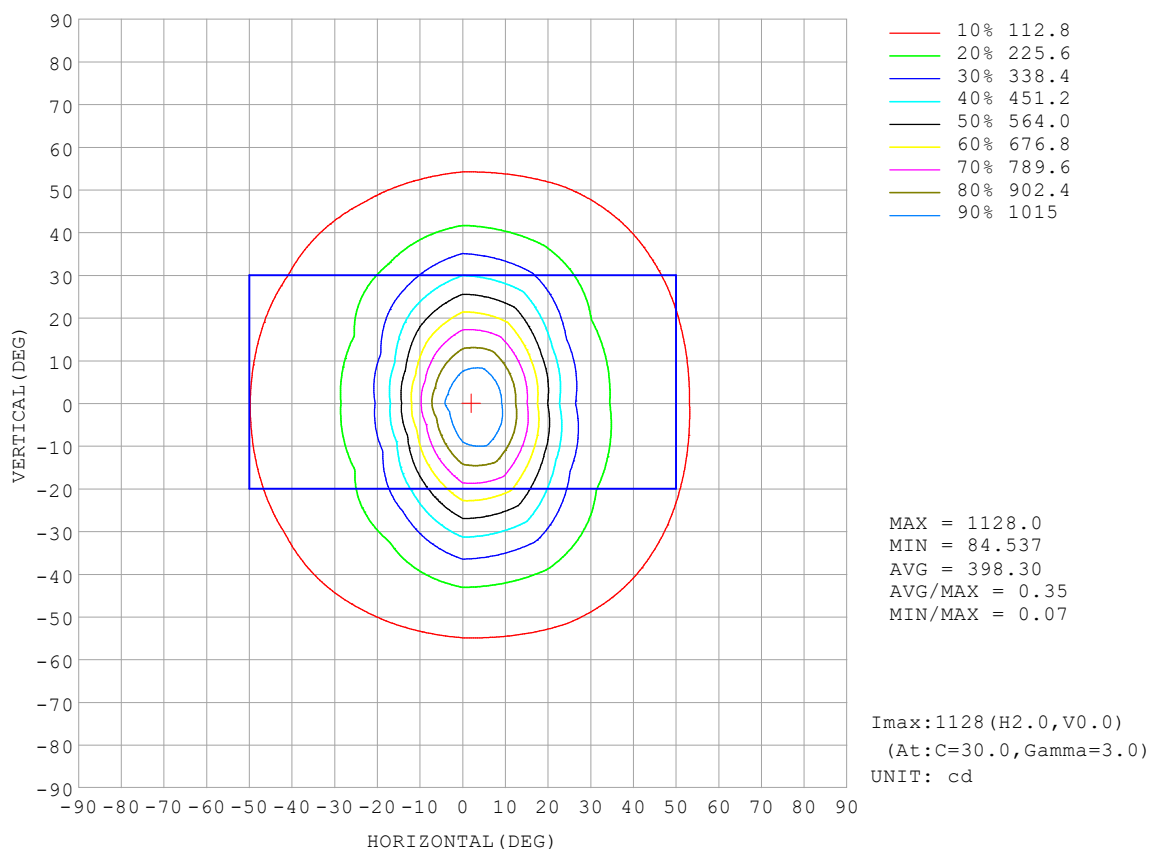
REFLECTANCE										
Ceiling	0.8	0.8	0.8	0.7	0.7	0.7	0.5	0.5	0.5	0
Walls	0.7	0.5	0.3	0.7	0.5	0.3	0.7	0.5	0.3	0
Working plane	0.2	0.2	0.2	0.2	0.2	0.2	0.2	0.2	0.2	0
ROOM INDEX	UTILIZATION FACTORS (PERCENT) $k(RI) \times RCR = 5$									
$k = 0.60$	70	61	55	69	60	55	68	60	55	50
0.80	79	70	64	78	69	64	76	69	63	58
1.00	86	77	71	84	76	71	82	77	70	64
1.25	91	83	78	90	83	77	87	81	76	70
1.50	95	88	83	94	87	82	91	85	80	74
2.00	100	94	89	98	92	88	95	90	86	79
2.50	103	97	93	101	96	91	97	93	89	81
3.00	106	100	96	103	99	95	99	95	92	84
4.00	109	104	101	106	102	99	102	99	96	87
5.00	111	107	104	108	105	102	103	101	98	89
ROOM INDEX	UF (total)									Direct
According to DIN EN 13032-2 2004			Suspended					SHRNOM = 1.25		

C Range: 0 - 360DEG
 C Interval: 30.0DEG
 Test Speed: HIGH
 Temperature: 25.3 °C
 Operators:
 Test Date: 2025-02-27

γ Range: 0 - 180DEG
 γ Interval: 1.0DEG
 Test System: EVERFINE GO-2000B_V1 SYSTEM V2.00.488
 Humidity: 65.0%
 Test Distance: 6.360m [K=1.0000]
 Remarks:

ISOCANDELA DIAGRAM

Test:U:24.00V I:0.7567A P:18.16W PF:1.000 Freq:0Hz Lamp Flux:1037.34x1 lm		
NAME: SFW20-24V-3535-24-CC-2700K-90-2040	TYPE:	WEIGHT:
SPEC.:	DIM.: Length=1m	SERIAL No.:
MFR.: OLympia lighting	SUR.:	Shielding Angle:

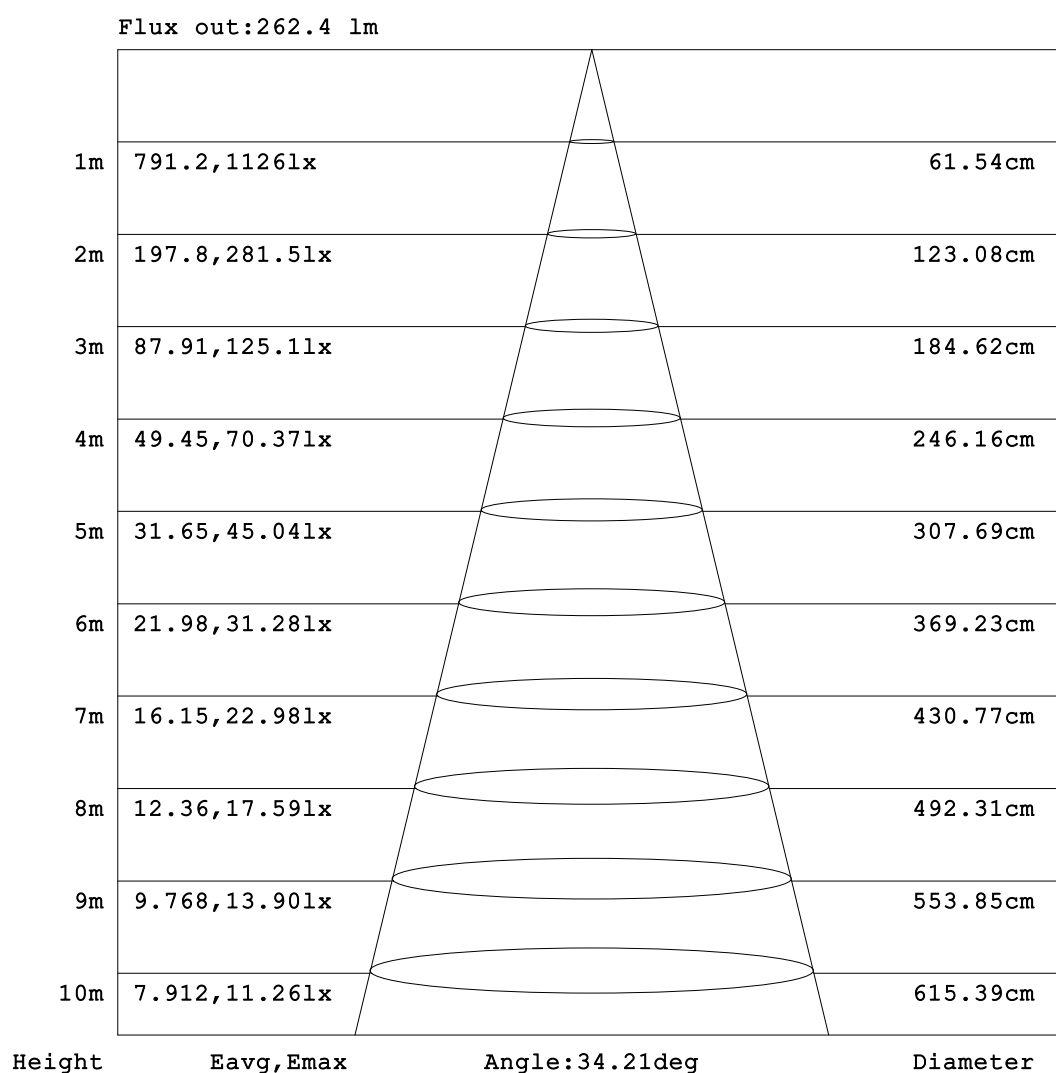


C Range: 0 - 360DEG
C Interval: 30.0DEG
Test Speed: HIGH
Temperature:25.3℃
Operators:
Test Date:2025-02-27

γ Range: 0 - 180DEG
γ Interval: 1.0DEG
Test System:EVERFINE GO-2000B_V1 SYSTEM V2.00.488
Humidity:65.0%
Test Distance:6.360m [K=1.0000]
Remarks:

AAI Figure

Test:U:24.00V I:0.7567A P:18.16W PF:1.000 Freq:0Hz Lamp Flux:1037.34x1 lm		
NAME: SFW20-24V-3535-24-CC-2700K-90-2040	TYPE:	WEIGHT:
SPEC.:	DIM.: Length=1m	SERIAL No.:
MFR.: OLympia lighting	SUR.:	Shielding Angle:



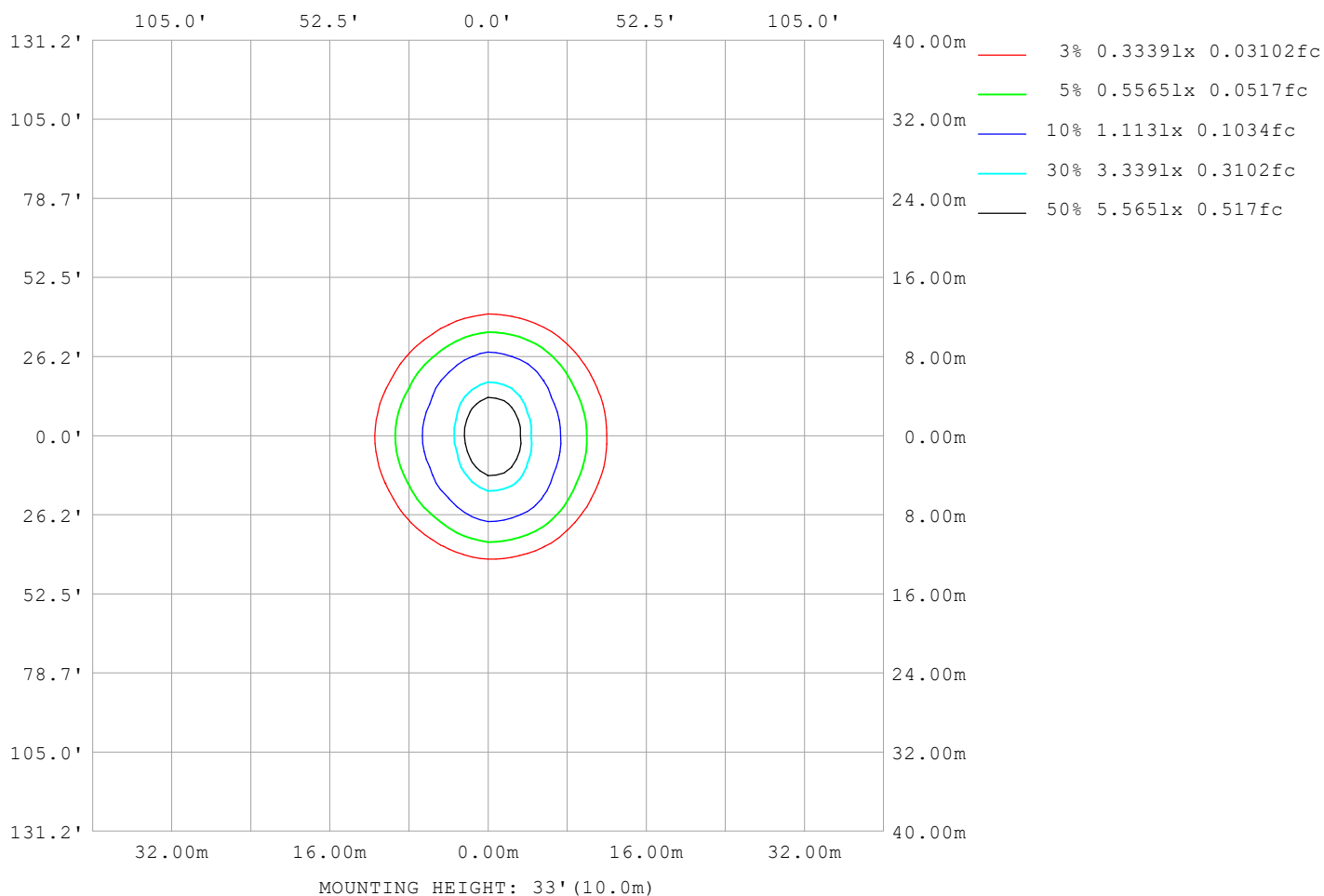
Note:The Curves indicate the illuminated area and the average illumination when the luminaire is at different distance.

C Range: 0 - 360DEG
C Interval: 30.0DEG
Test Speed: HIGH
Temperature:25.3℃
Operators:
Test Date:2025-02-27

γ Range: 0 - 180DEG
γ Interval: 1.0DEG
Test System:EVERFINE GO-2000B_V1 SYSTEM V2.00.488
Humidity:65.0%
Test Distance:6.360m [K=1.0000]
Remarks:

ISOLUX DIAGRAM

Test:U:24.00V I:0.7567A P:18.16W PF:1.000 Freq:0Hz Lamp Flux:1037.34x1 lm		
NAME: SFW20-24V-3535-24-CC-2700K-90-2040	TYPE:	WEIGHT:
SPEC.:	DIM.: Length=1m	SERIAL No.:
MFR.: OLympia lighting	SUR.:	Shielding Angle:



C Range: 0 - 360DEG
C Interval: 30.0DEG
Test Speed: HIGH
Temperature: 25.3°C
Operators:
Test Date: 2025-02-27

γ Range: 0 - 180DEG
γ Interval: 1.0DEG
Test System: EVERFINE GO-2000B_V1 SYSTEM V2.00.488
Humidity: 65.0%
Test Distance: 6.360m [K=1.0000]
Remarks:

LED Avg.L Report

Test:U:24.00V I:0.7567A P:18.16W PF:1.000 Freq:0Hz Lamp Flux:1037.34x1 lm		
NAME: SFW20-24V-3535-24-CC-2700K-90-2040	TYPE:	WEIGHT:
SPEC.:	DIM.: Length=1m	SERIAL No.:
MFR.: OLympia lighting	SUR.:	Shielding Angle:

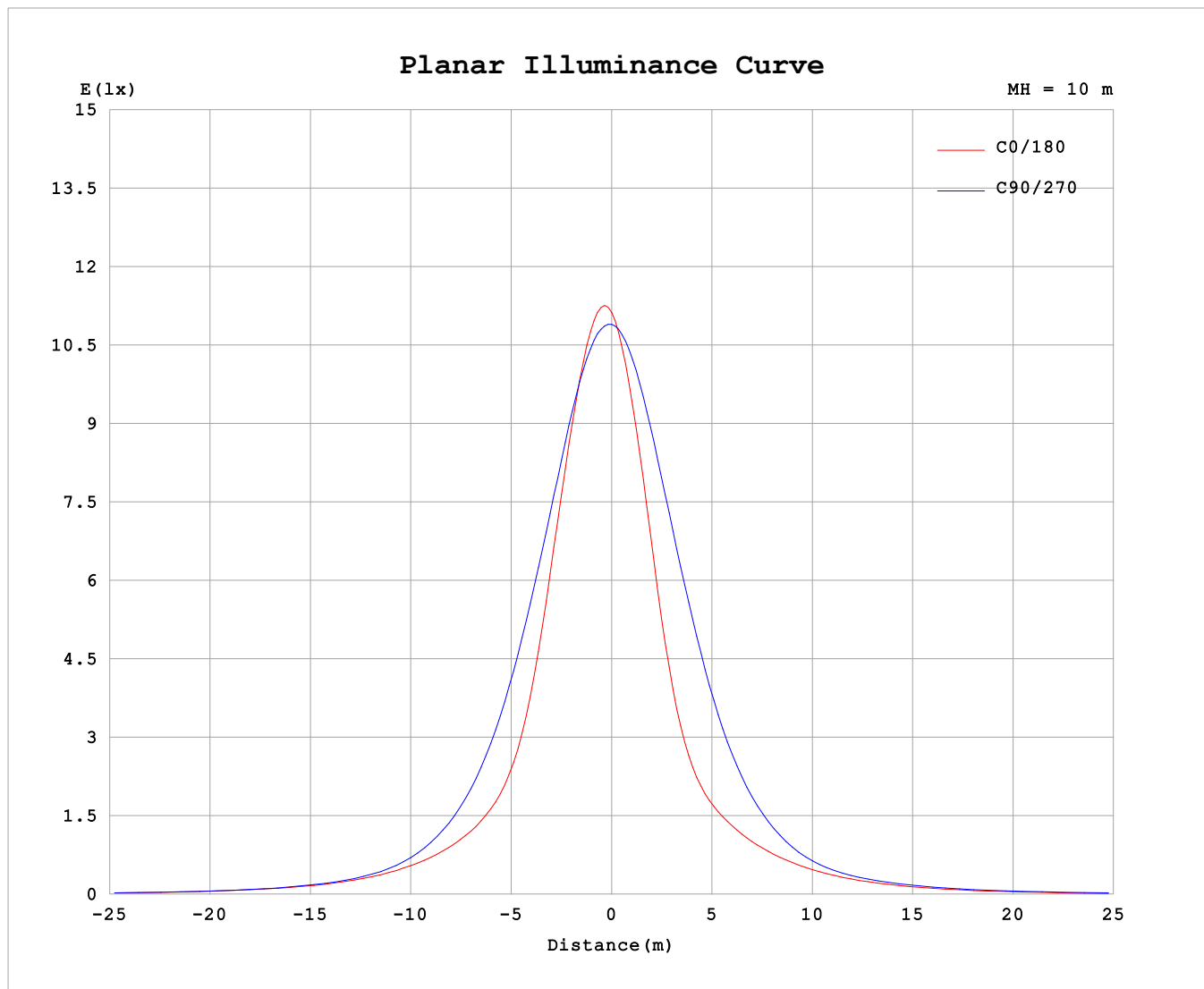
AvgL	cd/m2
L_0~180 (65) av	7492
L_0~180 (75) av	5438
L_0~180 (85) av	6568
L_90~270 (65) av	8697
L_90~270 (75) av	6791
L_90~270 (85) av	5748
L_45 (65) av	8151
L_45 (75) av	6195
L_45 (85) av	6422

Standard: GB/T 29293-2012

C Range: 0 - 360DEG
C Interval: 30.0DEG
Test Speed: HIGH
Temperature:25.3℃
Operators:
Test Date:2025-02-27

γ Range: 0 - 180DEG
γ Interval: 1.0DEG
Test System:EVERFINE GO-2000B_V1 SYSTEM V2.00.488
Humidity:65.0%
Test Distance:6.360m [K=1.0000]
Remarks:

Planar Illuminance Curve



C Range: 0 - 360DEG
C Interval: 30.0DEG
Test Speed: HIGH
Temperature: 25.3 °C
Operators:
Test Date: 2025-02-27

γ Range: 0 - 180DEG
 γ Interval: 1.0DEG
Test System: EVERFINE GO-2000B_V1 SYSTEM V2.00.488
Humidity: 65.0%
Test Distance: 6.360m [K=1.0000]
Remarks:

LUMINOUS DISTRIBUTION INTENSITY DATA

Test:U:24.00V I:0.7567A P:18.16W PF:1.000 Freq:0Hz Lamp Flux:1037.34x1 lm		
NAME: SFW20-24V-3535-24-CC-2700K-90-2040	TYPE:	WEIGHT:
SPEC.:	DIM.: Length=1m	SERIAL No.:
MFR.: Olym pia lighting	SUR.:	Shielding Angle:

Table--1

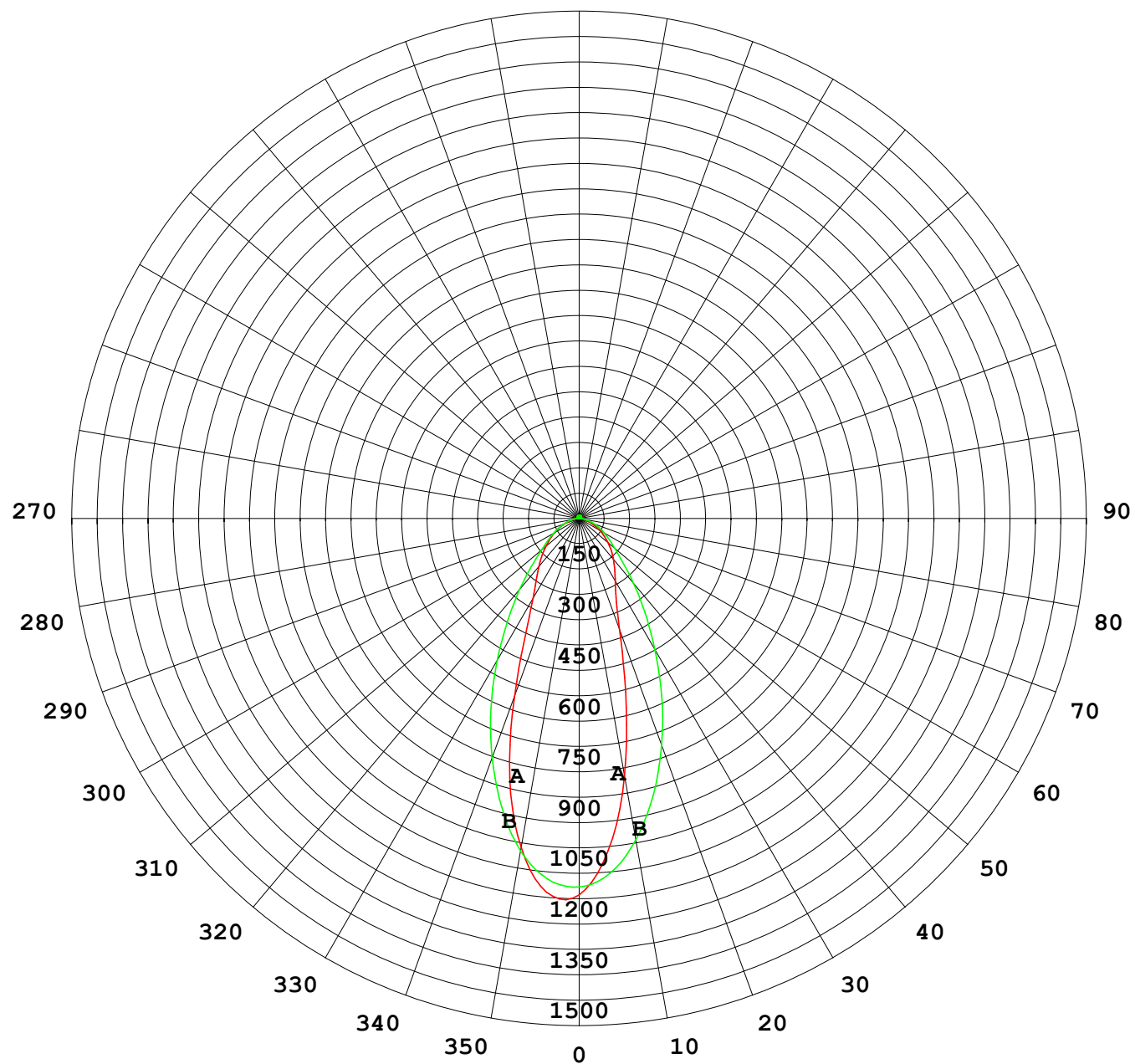
UNIT: cd

C (DEG) γ (DEG)	0	30	60	90	120	150	180	210	240	270	300	330							
0	1096	1096	1096	1096	1096	1096	1096	1096	1096	1096	1096	1096							
5	1093	1109	1110	1077	1023	979	972	979	1016	1060	1091	1099							
10	974	1017	1046	1004	892	788	763	794	885	972	1012	1002							
15	782	854	925	889	730	565	524	580	731	852	883	833							
20	552	654	777	757	566	386	346	398	577	718	731	630							
25	369	463	625	621	425	277	255	282	439	582	580	438							
30	269	325	483	487	318	222	212	221	327	452	441	305							
35	218	244	363	371	242	188	181	185	246	342	325	231							
40	182	197	269	276	191	161	156	157	188	253	240	189							
45	154	163	200	201	154	136	132	131	148	183	181	157							
50	126	134	151	147	126	113	110	108	119	139	140	130							
55	103	108	116	113	102	91.9	89.4	88.0	96.5	109	112	107							
60	82.7	86.1	90.5	87.7	79.9	71.9	69.5	69.7	77.5	86.1	89.1	85.9							
65	63.8	66.5	69.1	66.3	60.1	52.3	50.2	52.0	59.4	66.0	69.3	66.9							
70	44.2	47.7	49.2	47.8	42.2	35.1	33.3	34.9	42.5	47.9	51.1	48.7							
75	28.2	31.1	33.0	31.5	27.3	23.1	22.4	22.8	27.2	31.8	34.5	31.4							
80	18.8	19.9	20.7	18.3	16.2	14.7	14.7	14.6	15.9	18.6	20.8	19.9							
85	12.0	12.2	11.4	8.97	8.46	8.41	8.63	8.22	8.16	9.07	11.2	12.1							
90	6.80	6.73	5.44	3.49	4.05	4.46	4.58	4.34	4.00	3.62	5.21	6.57							
95	4.43	4.30	3.96	3.75	3.85	3.84	3.55	3.66	3.77	3.77	3.85	4.16							
100	4.09	4.09	4.07	4.07	4.10	4.01	3.58	3.77	4.02	4.08	3.96	3.89							
105	4.18	4.26	4.31	4.46	4.47	4.33	3.84	4.08	4.35	4.40	4.17	4.00							
110	4.42	4.53	4.68	4.91	4.96	4.79	4.26	4.52	4.77	4.78	4.54	4.23							
115	4.78	4.91	5.15	5.43	5.54	5.38	4.81	5.04	5.25	5.21	4.95	4.57							
120	5.30	5.43	5.70	6.00	6.18	6.10	5.45	5.64	5.77	5.68	5.41	5.07							
125	5.97	6.07	6.31	6.59	6.84	6.89	6.15	6.27	6.31	6.17	5.89	5.63							
130	6.75	6.79	6.94	7.17	7.49	7.70	6.82	6.88	6.83	6.65	6.43	6.23							
135	7.56	7.51	7.57	7.73	8.11	8.44	7.40	7.43	7.33	7.10	6.95	6.79							
140	8.33	8.22	8.15	8.23	8.66	9.08	7.86	7.90	7.79	7.51	7.42	7.29							
145	9.01	8.84	8.65	8.67	9.12	9.57	8.20	8.28	8.21	7.86	7.82	7.74							
150	9.54	9.35	9.04	9.04	9.49	9.90	8.50	8.61	8.57	8.19	8.16	8.13							
155	9.88	9.69	9.32	9.34	9.74	10.1	8.73	8.90	8.88	8.49	8.43	8.43							
160	10.1	9.84	9.51	9.60	9.90	10.1	8.93	9.11	9.15	8.78	8.65	8.66							
165	10.1	9.81	9.65	9.81	9.97	10.00	9.04	9.26	9.41	9.14	8.88	8.79							
170	9.87	9.71	9.77	9.97	9.98	9.81	9.13	9.37	9.64	9.50	9.19	8.94							
175	9.62	9.69	9.92	10.1	9.98	9.65	9.25	9.49	9.87	9.82	9.55	9.14							
180	9.51	9.70	10.0	10.1	9.91	9.54	9.52	9.67	10.0	10.1	9.92	9.51							

C Range: 0 - 360DEG
C Interval: 30.0DEG
Test Speed: HIGH
Temperature:25.3℃
Operators:
Test Date:2025-02-27

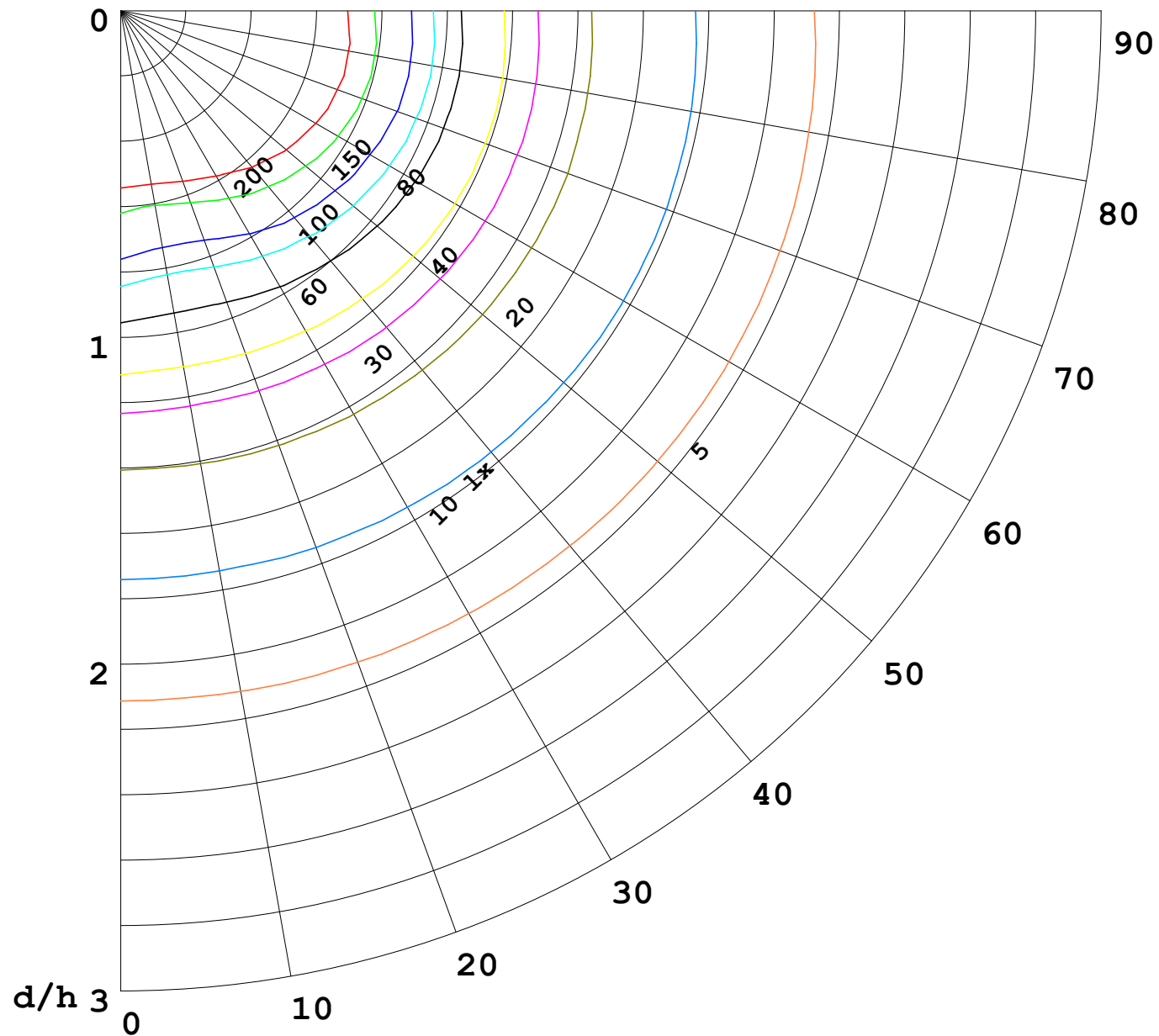
γ Range: 0 - 180DEG
γ Interval: 1.0DEG
Test System:EVERFINE GO-2000B_V1 SYSTEM V2.00.488
Humidity:65.0%
Test Distance:6.360m [K=1.0000]
Remarks:

I (cd)



1000 lm

$\kappa = 1$



F = 1000 lm
 K = 0.7
 Hcc = 0.8 m
 Hfc = 0.0 m
 Eave = 100 lx

	Pcc	Pw	Pfc
—————	70	50	30
—————	50	30	20

