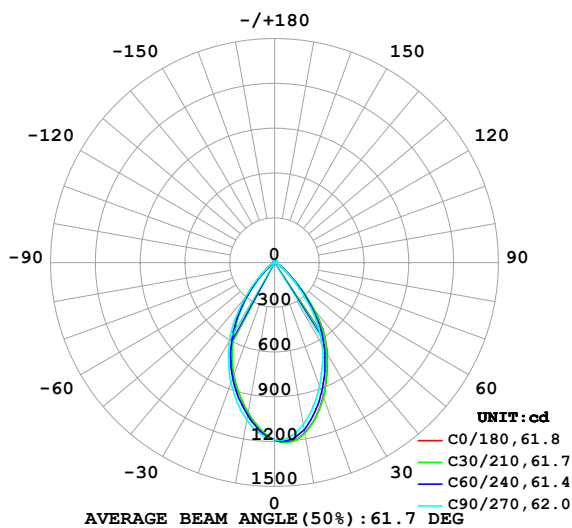


LUMINAIRE PHOTOMETRIC TEST REPORT

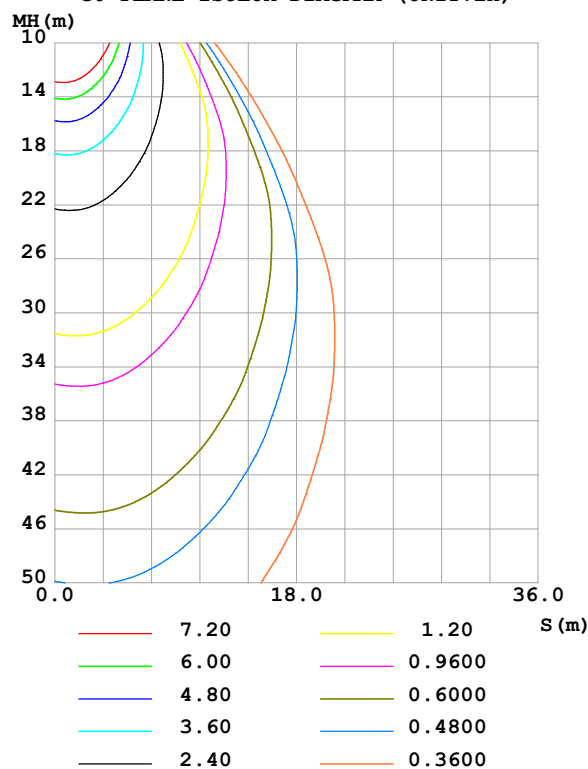
Test:U:24.00V I:0.9856A P:23.65W PF:1.000 Freq:0Hz Lamp Flux:1321.85x1 lm		
NAME: LW06-24V-3535-18-3000-80-60-A-1002	TYPE:	WEIGHT:
SPEC.:	DIM.: Length=1m	SERIAL No.:
MFR.: Olym pia lighting	SUR.:	Shielding Angle:

DATA OF LAMP		PHOTOMETRIC DATA				Eff: 55.88 lm/W
MODEL	3535	I _{max} (cd)	1208	S/MH (C0/180)	0.82	
NOMINAL POWER (W)	24	LOR (%)	100.0	S/MH (C90/270)	0.87	
RATED VOLTAGE (V)	24	TOTAL FLUX (lm)	1321.8	η UP,DN (C0-180)	1.9,50.0	
NOMINAL FLUX (lm)	1321.85	CIE CLASS	DIRECT	η UP,DN (C180-360)	1.8,46.3	
LAMPS INSIDE	1	η up (%)	3.7	CIBSE SHR NOM	1.00	
TEST VOLTAGE (V)		η down (%)	96.3	CIBSE SHR MAX	1.00	

LUMINOUS INTENSITY DISTRIBUTION DIAGRAM



C0 PLANE ISOLUX DIAGRAM (UNIT:lx)



C Range: 0 - 360DEG
C Interval: 30.0DEG
Test Speed: HIGH
Temperature:25.3℃
Operators:
Test Date:2025-04-07

γ Range: 0 - 180DEG
γ Interval: 1.0DEG
Test System:EVERFINE GO-2000B_V1 SYSTEM V2.00.488
Humidity:65.0%
Test Distance:6.360m [K=1.0000]
Remarks:

ZONAL FLUX DIAGRAM

ZONAL FLUX DIAGRAM:

γ	C0	C45	C90	C135	C180	C225	C270	C315	γ	Φ zone	Φ total	%lum, lamp
10	1159	1150	1102	1051	1023	1031	1069	1128	0- 10	108.6	108.6	8.21,8.21
20	956.5	940.8	881.7	827.1	804.4	813.3	854.3	920.2	10- 20	276.5	385.1	29.1,29.1
30	703.5	684.9	638.1	574.7	545.5	555.7	606.4	673.8	20- 30	343.6	728.6	55.1,55.1
40	404.6	395.4	346.5	293.6	272.4	273.8	311.5	372.6	30- 40	299.6	1028	77.8,77.8
50	134.5	134.4	115.5	87.24	73.69	79.69	101.0	122.5	40- 50	156.8	1185	89.6,89.6
60	42.89	41.91	36.72	27.56	24.20	26.68	33.85	39.30	50- 60	54.76	1240	93.8,93.8
70	13.24	14.31	13.77	9.242	6.964	8.957	12.91	13.24	60- 70	20.88	1261	95.4,95.4
80	4.786	5.377	6.985	4.832	4.034	4.894	6.923	5.179	70- 80	7.483	1268	95.9,95.9
90	3.666	3.829	3.825	3.903	3.585	3.686	3.570	3.761	80- 90	4.804	1273	96.3,96.3
100	4.195	4.360	4.665	4.777	4.458	4.523	4.406	4.124	90-100	4.359	1277	96.6,96.6
110	5.451	5.650	6.059	6.289	5.765	5.817	5.629	5.252	100-110	5.347	1283	97,97
120	7.199	7.381	7.794	8.162	7.355	7.368	7.118	6.699	110-120	6.486	1289	97.5,97.5
130	9.233	9.333	9.657	10.11	8.988	8.938	8.648	8.280	120-130	7.408	1297	98.1,98.1
140	11.15	11.12	11.30	11.80	10.35	10.28	9.952	9.684	130-140	7.697	1304	98.7,98.7
150	12.52	12.32	12.47	12.88	11.27	11.27	10.92	10.70	140-150	7.081	1311	99.2,99.2
160	13.25	13.06	13.23	13.39	11.93	12.03	11.81	11.54	150-160	5.624	1317	99.6,99.6
170	13.67	13.54	13.70	13.58	12.89	12.92	12.89	12.51	160-170	3.635	1321	99.9,99.9
180	13.75	13.76	13.88	13.53	13.76	13.75	13.85	13.52	170-180	1.277	1322	100,100
DEG	LUMINOUS INTENSITY:cd									UNIT:lm		

Conical surface Flux(90deg): 1125.3 lm

%lum = 85.1%

%lamp = 85.1%

Conical surface Flux(130deg): 1252.7 lm

%lum = 94.8%

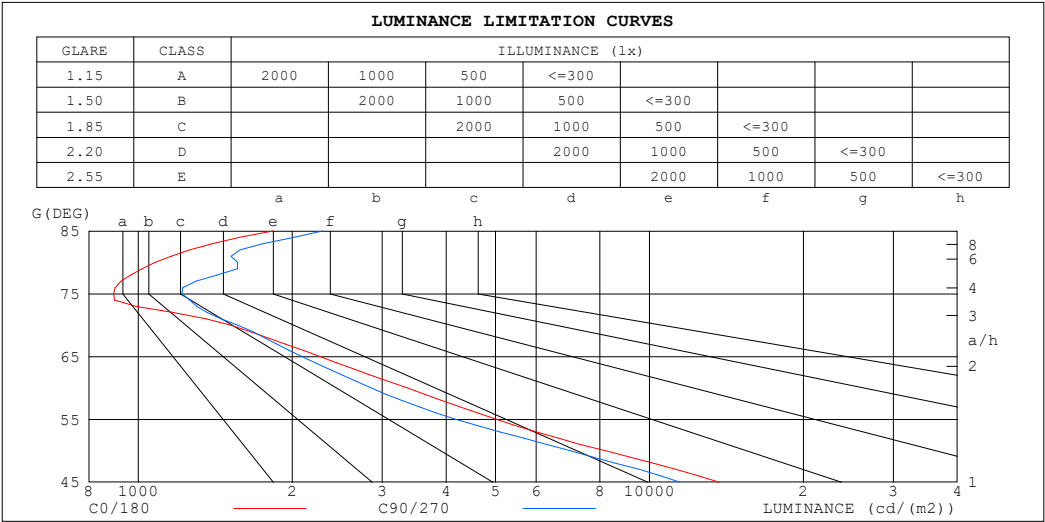
%lamp = 94.8%

C Range: 0 - 360DEG
 C Interval: 30.0DEG
 Test Speed: HIGH
 Temperature:25.3℃
 Operators:
 Test Date:2025-04-07

γ Range: 0 - 180DEG
 γ Interval: 1.0DEG
 Test System:EVERFINE GO-2000B_V1 SYSTEM V2.00.488
 Humidity:65.0%
 Test Distance:6.360m [K=1.0000]
 Remarks:

LUMINANCE LIMITATION CURVES

Test:U:24.00V I:0.9856A P:23.65W PF:1.000 Freq:0Hz Lamp Flux:1321.85x1 lm		
NAME: LW06-24V-3535-18-3000-80-60-A-1002	TYPE:	WEIGHT:
SPEC.:	DIM.: Length=1m	SERIAL No.:
MFR.: OLympia lighting	SUR.:	Shielding Angle:



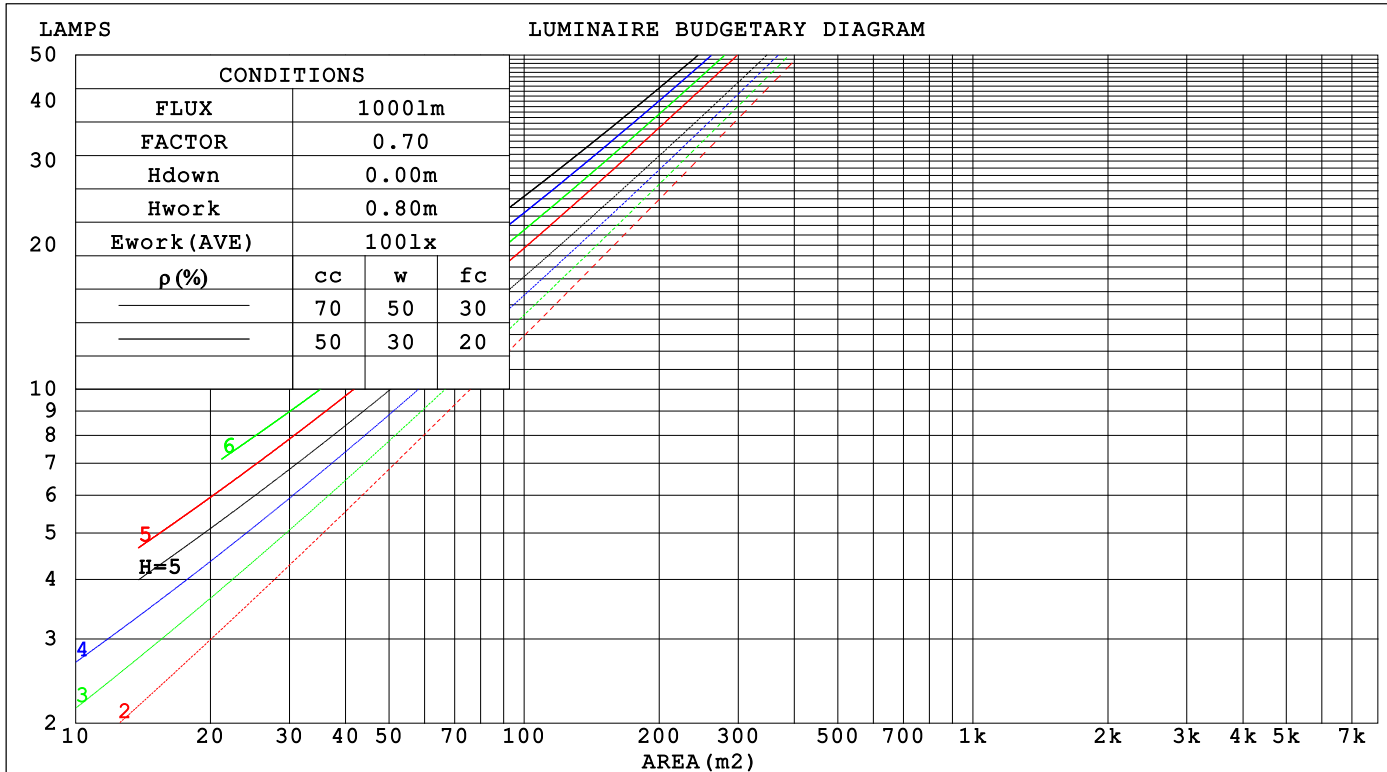
LUMINANCE cd/(m2)		
G (DEG)	C0/180	C90/270
85	1838	2295
80	1079	1562
75	894	1216
70	1515	1564
65	2266	2087
60	3356	2852
55	5011	4166
50	8186	6980
45	13694	11480

C Range: 0 - 360DEG	γ Range: 0 - 180DEG
C Interval: 30.0DEG	γ Interval: 1.0DEG
Test Speed: HIGH	Test System:EVERFINE GO-2000B_V1 SYSTEM V2.00.488
Temperature:25.3℃	Humidity:65.0%
Operators:	Test Distance:6.360m [K=1.0000]
Test Date:2025-04-07	Remarks:

CU AND LUMINAIRE BUDGETARY ESTIMATE DIAGRAM

Test:U:24.00V I:0.9856A P:23.65W PF:1.000 Freq:0Hz Lamp Flux:1321.85x1 lm		
NAME: LW06-24V-3535-18-3000-80-60-A-1002	TYPE:	WEIGHT:
SPEC.:	DIM.: Length=1m	SERIAL No.:
MFR.: OLympia lighting	SUR.:	Shielding Angle:

ρ_{cc}	80%			70%			50%			30%			10%			0
ρ_w	50%	30%	10%	50%	30%	10%	50%	30%	10%	50%	30%	10%	50%	30%	10%	0
ρ_{fc}	20%			20%			20%			20%			20%			0
RCR	RCR:Room Cavity Ratio Coefficients of Utilization(CU)															
0.0	1.18	1.18	1.18	1.15	1.15	1.15	1.09	1.09	1.09	1.04	1.04	1.04	.99	.99	.99	.96
1.0	1.08	1.06	1.03	1.06	1.03	1.01	1.01	.99	.97	.97	.95	.94	.93	.92	.90	.88
2.0	.00	.95	.91	.97	.93	.90	.94	.90	.87	.90	.87	.85	.87	.84	.82	.80
3.0	.92	.86	.81	.90	.85	.80	.87	.82	.79	.84	.80	.77	.81	.78	.75	.73
4.0	.84	.78	.73	.83	.77	.73	.80	.75	.71	.78	.74	.70	.75	.72	.69	.67
5.0	.78	.71	.67	.77	.71	.66	.75	.69	.65	.72	.68	.64	.70	.66	.63	.62
6.0	.72	.66	.61	.71	.65	.60	.69	.64	.60	.68	.63	.59	.66	.62	.58	.57
7.0	.67	.61	.56	.66	.60	.56	.65	.59	.55	.63	.58	.55	.62	.57	.54	.52
8.0	.63	.56	.52	.62	.56	.51	.61	.55	.51	.59	.54	.51	.58	.53	.50	.49
9.0	.59	.52	.48	.58	.52	.48	.57	.51	.47	.56	.51	.47	.55	.50	.47	.45
10.0	.55	.49	.45	.55	.49	.44	.54	.48	.44	.52	.47	.44	.51	.47	.44	.42



```

γ Range: 0 - 180DEG
γ Interval: 1.0DEG
Test System:EVERFINE GO-2000B_V1 SYSTEM V2.00.488
Humidity:65.0%
Test Distance:6.360m [K=1.0000]
Remarks:

```

WEC AND CCEC

Test:U:24.00V I:0.9856A P:23.65W PF:1.000 Freq:0Hz Lamp Flux:1321.85x1 lm		
NAME: LW06-24V-3535-18-3000-80-60-A-1002	TYPE:	WEIGHT:
SPEC.:	DIM.: Length=1m	SERIAL No.:
MFR.: OLympia lighting	SUR.:	Shielding Angle:

pcc	80%			70%			50%			30%			10%			0														
pw	50%	30%	10%	50%	30%	10%	50%	30%	10%	50%	30%	10%	50%	30%	10%	0														
pfc	20%			20%			20%			20%			20%			0														
RCR	RCR:Room Cavity Ratio															Wall Exitance Coefficients(WEC)														
0.0																														
1.0	.204	.116	.037	.196	.112	.036	.181	.104	.033	.168	.097	.031	.155	.090	.029															
2.0	.196	.107	.033	.189	.104	.032	.176	.098	.030	.164	.092	.029	.154	.087	.027															
3.0	.186	.099	.030	.180	.097	.029	.169	.092	.028	.159	.087	.027	.149	.083	.026															
4.0	.177	.092	.027	.172	.090	.027	.162	.086	.026	.153	.082	.025	.144	.078	.024															
5.0	.168	.086	.025	.163	.084	.024	.154	.080	.024	.146	.077	.023	.139	.074	.022															
6.0	.159	.080	.023	.155	.078	.023	.148	.076	.022	.140	.073	.021	.133	.070	.021															
7.0	.152	.075	.021	.148	.074	.021	.141	.071	.021	.134	.069	.020	.128	.067	.020															
8.0	.144	.071	.020	.141	.069	.020	.135	.067	.019	.129	.065	.019	.123	.063	.018															
9.0	.138	.067	.019	.135	.066	.018	.129	.064	.018	.123	.062	.018	.118	.060	.017															
10.0	.131	.063	.017	.129	.062	.017	.123	.060	.017	.118	.059	.017	.114	.057	.016															

pcc	80%			70%			50%			30%			10%			0
pw	50%	30%	10%	50%	30%	10%	50%	30%	10%	50%	30%	10%	50%	30%	10%	0
pfc	20%			20%			20%			20%			20%			0
RCR	RCR:Room Cavity Ratio						Ceiling Cavity Exitance Coefficients (CCEC)									
0.0	.219	.219	.219	.187	.187	.187	.128	.128	.128	.073	.073	.073	.023	.023	.023	
1.0	.201	.185	.171	.172	.159	.147	.118	.110	.102	.068	.063	.059	.022	.020	.019	
2.0	.188	.161	.138	.161	.139	.120	.110	.096	.083	.064	.056	.049	.020	.018	.016	
3.0	.177	.143	.115	.152	.123	.100	.104	.085	.070	.060	.050	.041	.019	.016	.013	
4.0	.168	.128	.098	.144	.111	.085	.099	.077	.060	.057	.045	.035	.018	.015	.012	
5.0	.160	.117	.085	.137	.101	.074	.095	.071	.053	.055	.042	.031	.018	.014	.010	
6.0	.153	.108	.076	.131	.094	.066	.091	.066	.047	.053	.039	.028	.017	.013	.009	
7.0	.147	.101	.069	.126	.087	.060	.087	.061	.042	.051	.036	.025	.016	.012	.008	
8.0	.141	.095	.063	.121	.082	.055	.084	.058	.039	.049	.034	.023	.016	.011	.008	
9.0	.136	.090	.059	.117	.078	.051	.081	.055	.036	.047	.032	.022	.015	.011	.007	
10.0	.131	.086	.055	.113	.074	.048	.079	.052	.034	.046	.031	.020	.015	.010	.007	

C Range: 0 - 360DEG
C Interval: 30.0DEG
Test Speed: HIGH
Temperature:25.3℃
Operators:
Test Date:2025-04-07

γ Range: 0 - 180DEG
γ Interval: 1.0DEG
Test System:EVERFINE GO-2000B_V1 SYSTEM V2.00.488
Humidity:65.0%
Test Distance:6.360m [K=1.0000]
Remarks:

UGR(Unified Glare Rating) Table

Test:U:24.00V I:0.9856A P:23.65W PF:1.000 Freq:0Hz Lamp Flux:1321.85x1 lm										
NAME: LW06-24V-3535-18-3000-80-60-A-1002					TYPE:			WEIGHT:		
SPEC.:					DIM.: Length=1m			SERIAL No.:		
MFR.: OLympia lighting					SUR.:			Shielding Angle:		
ceiling/cavity	0.7	0.7	0.5	0.5	0.3	0.7	0.7	0.5	0.5	0.3
walls	0.5	0.3	0.5	0.3	0.3	0.5	0.3	0.5	0.3	0.3
working plane	0.2	0.2	0.2	0.2	0.2	0.2	0.2	0.2	0.2	0.2
Room dimensions	Viewed crosswise					Viewed endwise				
x = 2H y = 2H	17.7	18.8	18.0	19.0	19.3	17.1	18.2	17.4	18.4	18.7
3H	17.7	18.6	18.0	18.9	19.2	17.1	18.0	17.4	18.3	18.6
4H	17.6	18.5	17.9	18.8	19.1	17.0	17.9	17.4	18.2	18.5
6H	17.5	18.4	17.9	18.7	19.0	17.0	17.8	17.3	18.1	18.5
8H	17.5	18.3	17.9	18.6	19.0	17.0	17.8	17.3	18.1	18.4
12H	17.5	18.2	17.8	18.6	18.9	17.0	17.7	17.3	18.1	18.4
4H 2H	17.6	18.5	17.9	18.8	19.1	17.0	17.9	17.3	18.2	18.5
3H	17.5	18.3	17.9	18.6	19.0	17.0	17.8	17.4	18.1	18.4
4H	17.5	18.2	17.9	18.5	18.9	16.9	17.6	17.3	18.0	18.4
6H	17.4	18.0	17.8	18.4	18.8	16.9	17.5	17.4	17.9	18.4
8H	17.4	17.9	17.8	18.4	18.8	16.9	17.5	17.4	17.9	18.4
12H	17.4	17.9	17.8	18.3	18.8	17.0	17.5	17.4	17.9	18.4
8H 4H	17.3	17.9	17.8	18.3	18.8	16.8	17.4	17.3	17.8	18.3
6H	17.3	17.8	17.8	18.2	18.7	16.8	17.3	17.3	17.8	18.3
8H	17.3	17.7	17.8	18.2	18.7	16.9	17.3	17.4	17.8	18.3
12H	17.3	17.7	17.8	18.2	18.7	17.0	17.3	17.5	17.8	18.4
12H 4H	17.3	17.8	17.8	18.2	18.7	16.8	17.3	17.2	17.7	18.2
6H	17.3	17.7	17.8	18.1	18.7	16.8	17.2	17.3	17.7	18.2
8H	17.3	17.6	17.8	18.1	18.7	16.8	17.2	17.4	17.7	18.3
Variations with the observer position at spacings(CIE Pub.117):										
S = 1.0H	+ 2.0 / - 4.5					+ 1.9 / - 4.1				
1.5H	+ 2.9 / - 3.7					+ 2.6 / - 3.2				
2.0H	+ 4.3 / - 3.9					+ 3.9 / - 3.2				

CIE Pub.117, 1322 lm Total Lamp Luminous Flux Correct ($8\log(F/F_0) = 1.0$)
Area: 0.0257 m²

C Range: 0 - 360DEG
C Interval: 30.0DEG
Test Speed: HIGH
Temperature:25.3℃
Operators:
Test Date:2025-04-07

γ Range: 0 - 180DEG
γ Interval: 1.0DEG
Test System:EVERFINE GO-2000B_V1 SYSTEM V2.00.488
Humidity:65.0%
Test Distance:6.360m [K=1.0000]
Remarks:

UTILIZATION FACTORS TABLE

Test:U:24.00V I:0.9856A P:23.65W PF:1.000 Freq:0Hz Lamp Flux:1321.85x1 lm		
NAME: LW06-24V-3535-18-3000-80-60-A-1002	TYPE:	WEIGHT:
SPEC.:	DIM.: Length=1m	SERIAL No.:
MFR.: OLympia lighting	SUR.:	Shielding Angle:

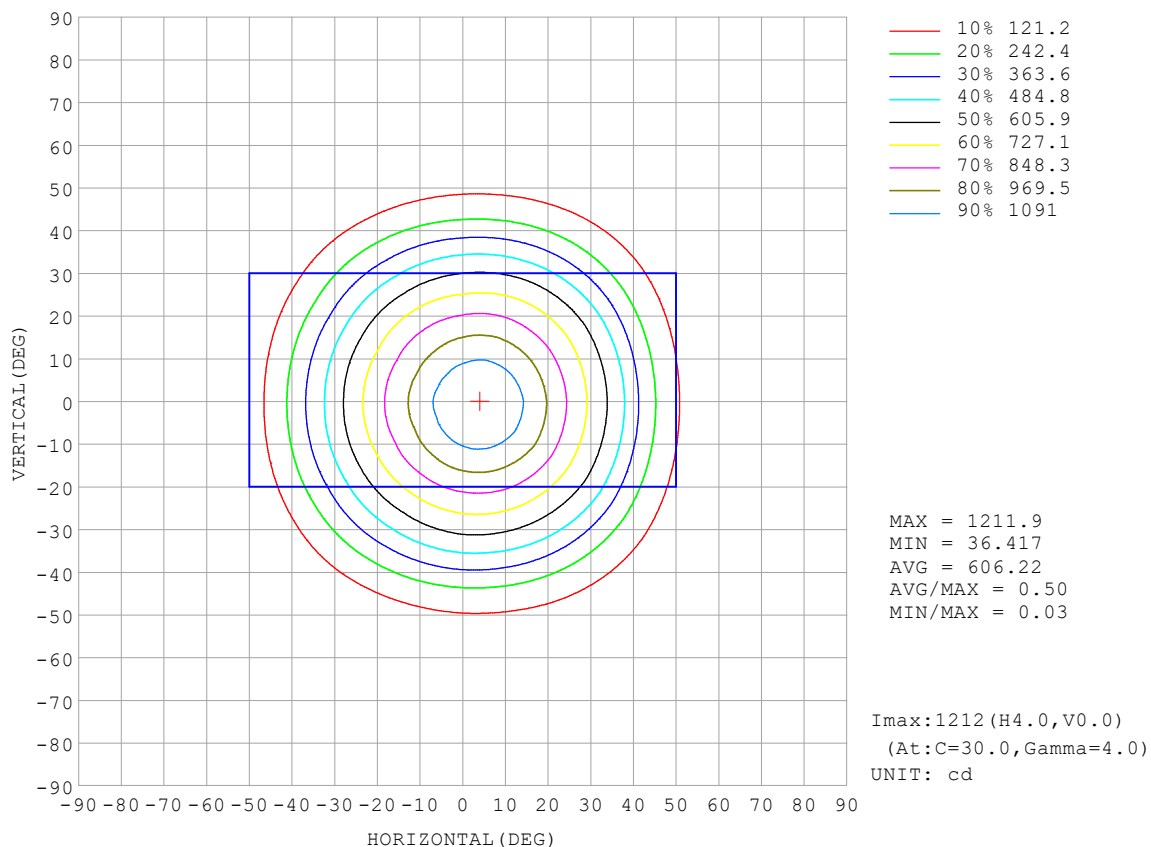
REFLECTANCE										
Ceiling	0.8	0.8	0.8	0.7	0.7	0.7	0.5	0.5	0.5	0
Walls	0.7	0.5	0.3	0.7	0.5	0.3	0.7	0.5	0.3	0
Working plane	0.2	0.2	0.2	0.2	0.2	0.2	0.2	0.2	0.2	0
ROOM INDEX	UTILIZATION FACTORS (PERCENT) $k(RI) \times RCR = 5$									
$k = 0.60$	77	70	65	77	69	65	76	69	65	60
0.80	86	79	74	85	78	74	84	77	73	68
1.00	92	85	80	91	84	80	89	84	79	74
1.25	97	91	86	96	90	86	93	88	85	79
1.50	101	95	90	99	94	90	96	92	88	82
2.00	104	99	95	103	98	94	99	95	92	86
2.50	107	102	98	105	100	97	101	97	95	87
3.00	109	104	101	106	103	100	102	99	97	89
4.00	111	107	105	109	105	103	104	102	100	91
5.00	112	109	107	110	107	105	105	103	101	92
ROOM INDEX	UF (total)									Direct
According to DIN EN 13032-2 2004			Suspended					SHRNOM = 1.25		

C Range: 0 - 360DEG
 C Interval: 30.0DEG
 Test Speed: HIGH
 Temperature: 25.3 °C
 Operators:
 Test Date: 2025-04-07

γ Range: 0 - 180DEG
 γ Interval: 1.0DEG
 Test System: EVERFINE GO-2000B_V1 SYSTEM V2.00.488
 Humidity: 65.0%
 Test Distance: 6.360m [K=1.0000]
 Remarks:

ISOCANDELA DIAGRAM

Test:U:24.00V I:0.9856A P:23.65W PF:1.000 Freq:0Hz Lamp Flux:1321.85x1 lm		
NAME: LW06-24V-3535-18-3000-80-60-A-1002	TYPE:	WEIGHT:
SPEC.:	DIM.: Length=1m	SERIAL No.:
MFR.: OLympia lighting	SUR.:	Shielding Angle:

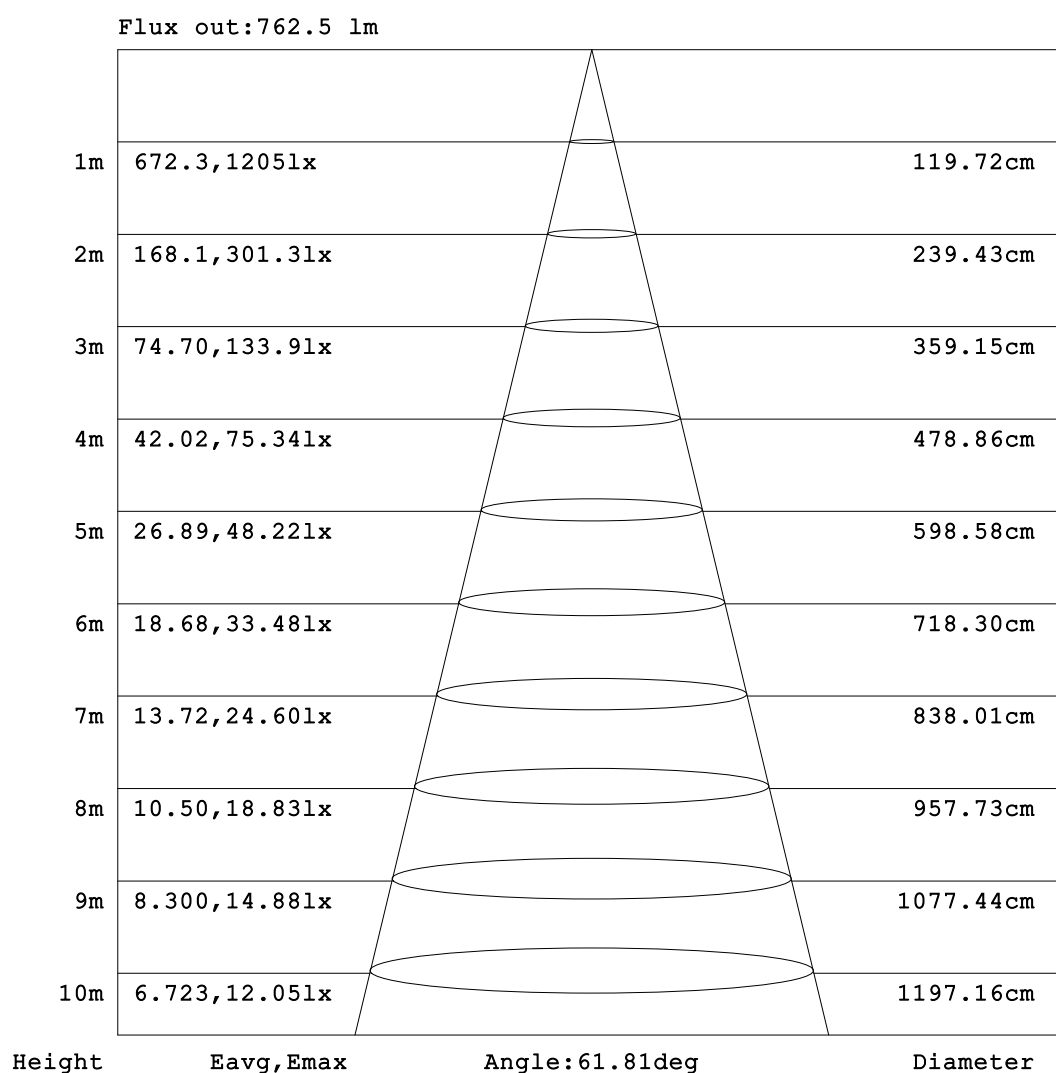


C Range: 0 - 360DEG
C Interval: 30.0DEG
Test Speed: HIGH
Temperature:25.3℃
Operators:
Test Date:2025-04-07

γ Range: 0 - 180DEG
γ Interval: 1.0DEG
Test System:EVERFINE GO-2000B_V1 SYSTEM V2.00.488
Humidity:65.0%
Test Distance:6.360m [K=1.0000]
Remarks:

AAI Figure

Test:U:24.00V I:0.9856A P:23.65W PF:1.000 Freq:0Hz Lamp Flux:1321.85x1 lm		
NAME: LW06-24V-3535-18-3000-80-60-A-1002	TYPE:	WEIGHT:
SPEC.:	DIM.: Length=1m	SERIAL No.:
MFR.: OLympia lighting	SUR.:	Shielding Angle:



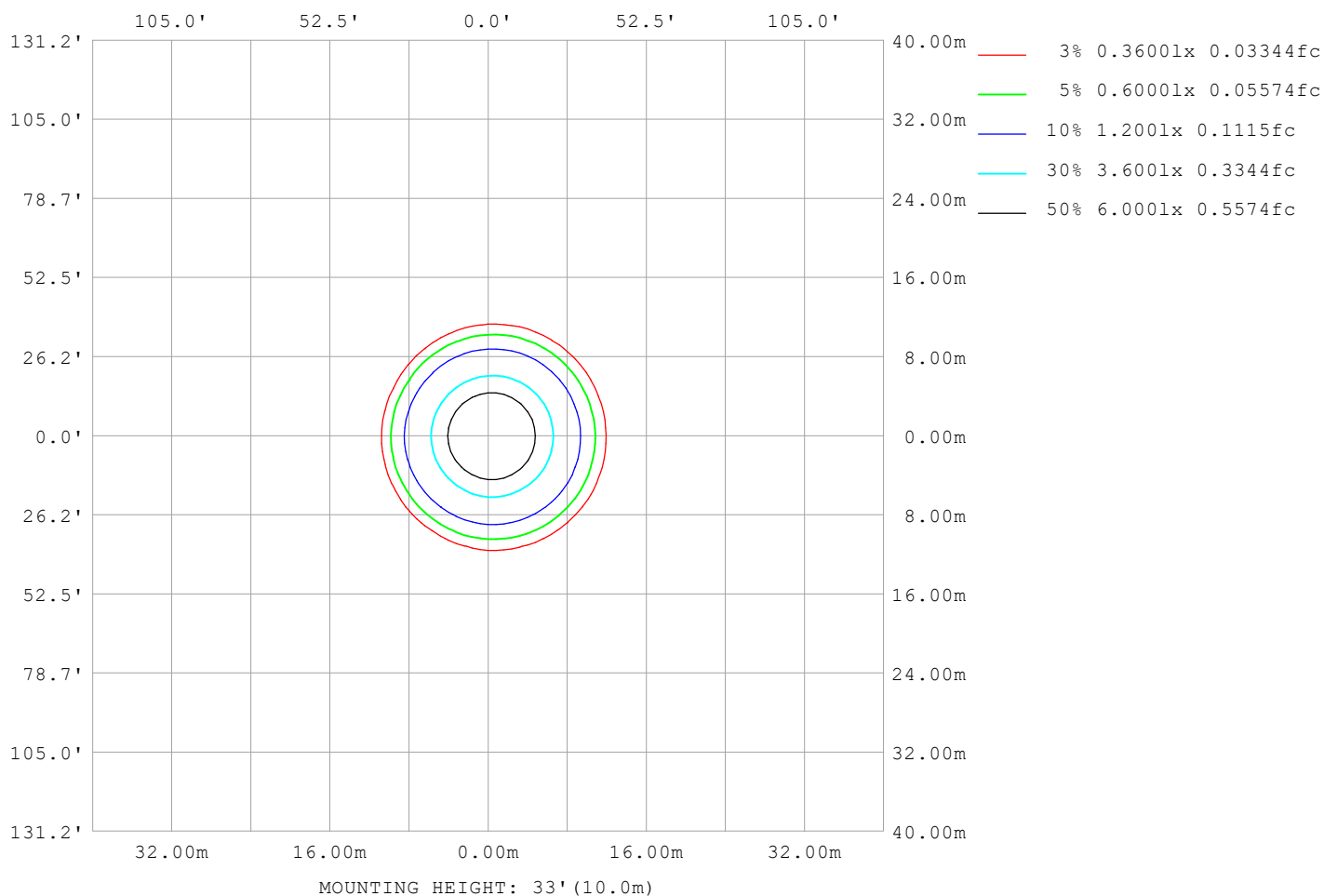
Note:The Curves indicate the illuminated area and the average illumination when the luminaire is at different distance.

C Range: 0 - 360DEG
C Interval: 30.0DEG
Test Speed: HIGH
Temperature:25.3℃
Operators:
Test Date:2025-04-07

γ Range: 0 - 180DEG
γ Interval: 1.0DEG
Test System:EVERFINE GO-2000B_V1 SYSTEM V2.00.488
Humidity:65.0%
Test Distance:6.360m [K=1.0000]
Remarks:

ISOLUX DIAGRAM

Test:U:24.00V I:0.9856A P:23.65W PF:1.000 Freq:0Hz Lamp Flux:1321.85x1 lm		
NAME: LW06-24V-3535-18-3000-80-60-A-1002	TYPE:	WEIGHT:
SPEC.:	DIM.: Length=1m	SERIAL No.:
MFR.: OLympia lighting	SUR.:	Shielding Angle:



C Range: 0 - 360DEG
C Interval: 30.0DEG
Test Speed: HIGH
Temperature: 25.3°C
Operators:
Test Date: 2025-04-07

γ Range: 0 - 180DEG
γ Interval: 1.0DEG
Test System: EVERFINE GO-2000B_V1 SYSTEM V2.00.488
Humidity: 65.0%
Test Distance: 6.360m [K=1.0000]
Remarks:

LED Avg.L Report

Test:U:24.00V I:0.9856A P:23.65W PF:1.000 Freq:0Hz Lamp Flux:1321.85x1 lm		
NAME: LW06-24V-3535-18-3000-80-60-A-1002	TYPE:	WEIGHT:
SPEC.:	DIM.: Length=1m	SERIAL No.:
MFR.: OLympia lighting	SUR.:	Shielding Angle:

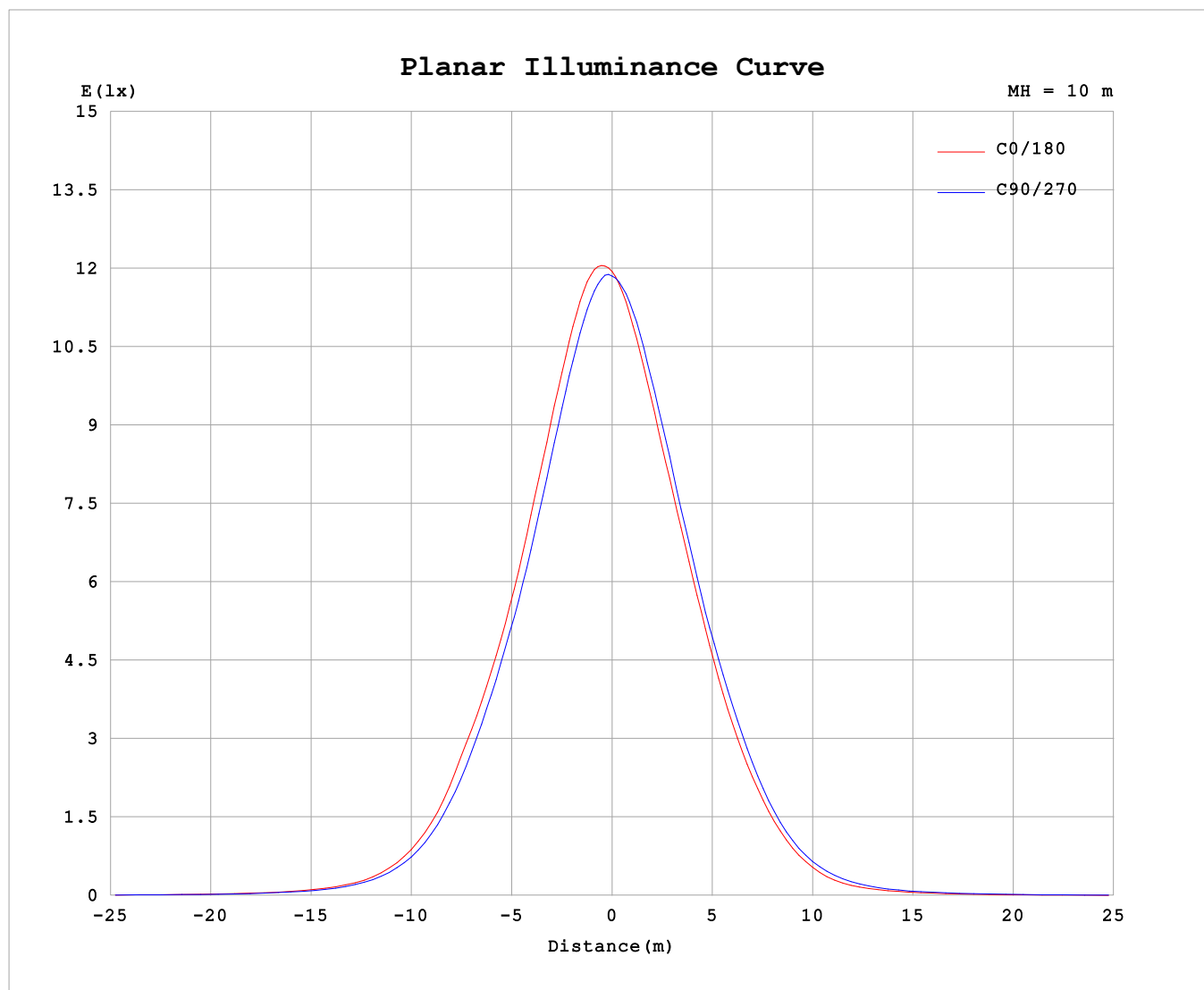
AvgL	cd/m2
L_0~180 (65) av	1768
L_0~180 (75) av	798
L_0~180 (85) av	1721
L_90~270 (65) av	2024
L_90~270 (75) av	1201
L_90~270 (85) av	2299
L_45 (65) av	1857
L_45 (75) av	930
L_45 (85) av	1918

Standard: GB/T 29293-2012

C Range: 0 - 360DEG
C Interval: 30.0DEG
Test Speed: HIGH
Temperature:25.3℃
Operators:
Test Date:2025-04-07

γ Range: 0 - 180DEG
γ Interval: 1.0DEG
Test System:EVERFINE GO-2000B_V1 SYSTEM V2.00.488
Humidity:65.0%
Test Distance:6.360m [K=1.0000]
Remarks:

Planar Illuminance Curve



C Range: 0 - 360DEG
C Interval: 30.0DEG
Test Speed: HIGH
Temperature: 25.3 °C
Operators:
Test Date: 2025-04-07

γ Range: 0 - 180DEG
 γ Interval: 1.0DEG
Test System: EVERFINE GO-2000B_V1 SYSTEM V2.00.488
Humidity: 65.0%
Test Distance: 6.360m [K=1.0000]
Remarks:

LUMINOUS DISTRIBUTION INTENSITY DATA

Test:U:24.00V I:0.9856A P:23.65W PF:1.000 Freq:0Hz Lamp Flux:1321.85x1 lm		
NAME: LW06-24V-3535-18-3000-80-60-A-1002	TYPE:	WEIGHT:
SPEC.:	DIM.: Length=1m	SERIAL No.:
MFR.: OLympia lighting	SUR.:	Shielding Angle:

Table--1

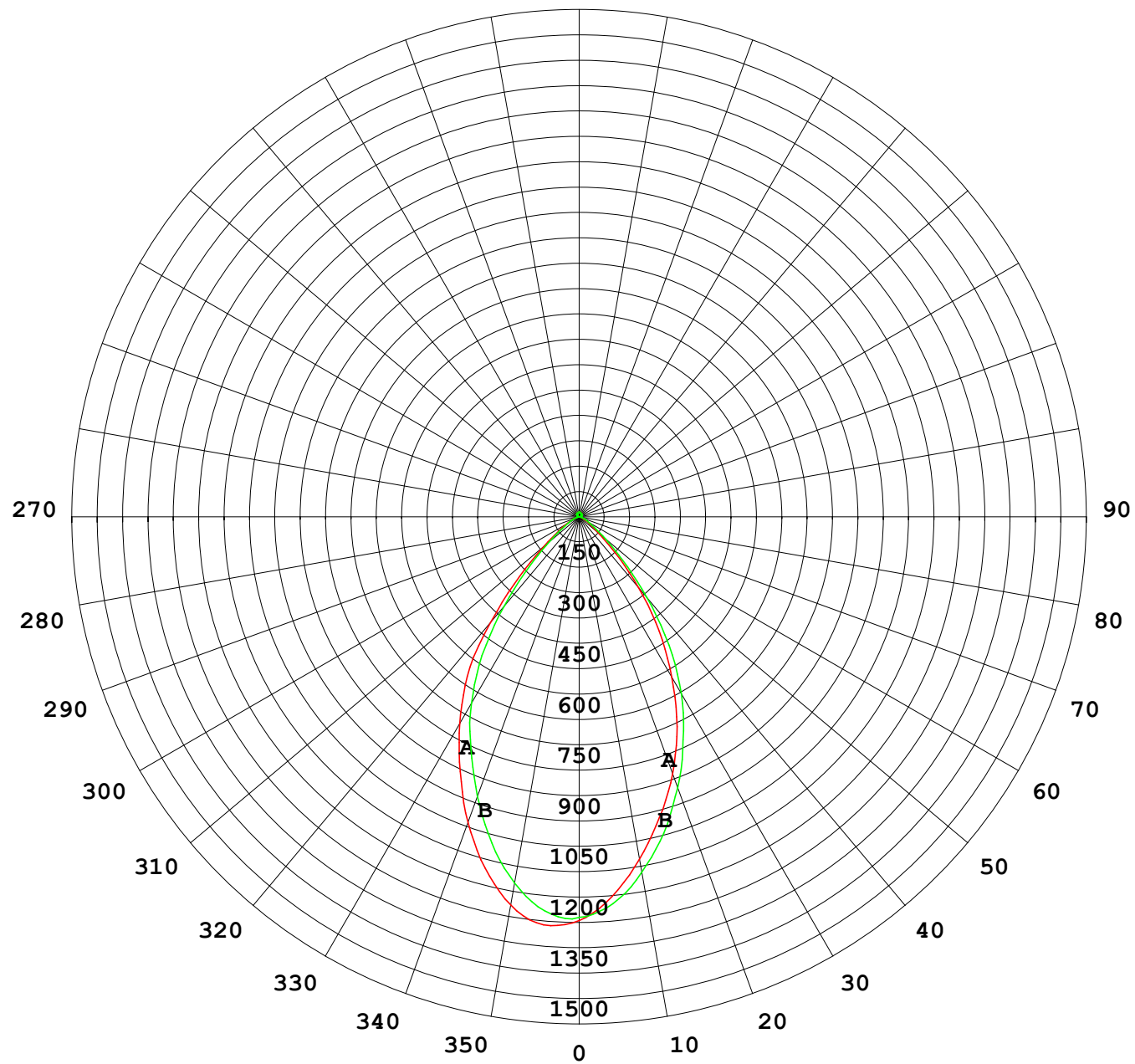
UNIT: cd

C (DEG) γ (DEG)	0	30	60	90	120	150	180	210	240	270	300	330							
0	1187	1187	1187	1187	1187	1187	1187	1187	1187	1187	1187	1187							
5	1204	1207	1191	1172	1148	1131	1120	1118	1132	1151	1174	1195							
10	1159	1161	1138	1102	1064	1038	1023	1024	1038	1069	1113	1143							
15	1070	1069	1040	1000	958	929	915	914	937	971	1017	1053							
20	957	959	922	882	840	815	804	802	824	854	902	938							
25	828	827	797	758	718	693	682	678	701	729	779	815							
30	703	699	671	638	589	561	545	546	565	606	655	692							
35	574	571	536	502	451	419	411	406	425	465	513	559							
40	405	411	379	346	306	281	272	265	283	311	355	391							
45	247	253	233	209	180	160	151	147	163	184	212	235							
50	134	139	130	116	93.9	80.5	73.7	74.7	84.7	101	116	130							
55	73.4	74.1	69.5	61.5	50.0	42.4	40.8	41.1	47.1	55.6	63.1	69.7							
60	42.9	42.5	41.3	36.7	30.1	25.0	24.2	24.5	28.9	33.9	37.7	40.9							
65	24.5	24.8	24.6	22.7	18.5	14.9	13.9	14.3	17.9	21.2	23.1	23.7							
70	13.2	14.0	14.6	13.8	10.6	7.85	6.96	7.55	10.4	12.9	13.4	13.1							
75	5.91	6.59	7.80	8.10	6.20	5.13	4.70	4.89	6.44	7.87	6.92	5.90							
80	4.79	4.96	5.80	6.98	5.23	4.44	4.03	4.28	5.51	6.92	5.58	4.77							
85	4.09	4.22	4.76	5.15	4.43	4.00	3.62	3.81	4.52	5.15	4.68	4.12							
90	3.67	3.78	3.88	3.83	3.89	3.92	3.59	3.65	3.72	3.57	3.85	3.67							
95	3.78	3.87	3.96	4.13	4.20	4.24	3.96	3.99	4.03	3.91	3.78	3.64							
100	4.19	4.27	4.45	4.67	4.77	4.78	4.46	4.51	4.54	4.41	4.23	4.02							
105	4.75	4.84	5.05	5.31	5.46	5.48	5.08	5.12	5.15	4.98	4.77	4.51							
110	5.45	5.53	5.77	6.06	6.26	6.32	5.76	5.82	5.81	5.63	5.38	5.12							
115	6.28	6.34	6.60	6.90	7.15	7.24	6.53	6.58	6.56	6.35	6.09	5.80							
120	7.20	7.26	7.50	7.79	8.09	8.23	7.35	7.39	7.35	7.12	6.85	6.55							
125	8.20	8.25	8.45	8.73	9.05	9.24	8.18	8.20	8.13	7.90	7.62	7.35							
130	9.23	9.26	9.40	9.66	9.99	10.2	8.99	8.98	8.89	8.65	8.39	8.17							
135	10.2	10.2	10.3	10.5	10.9	11.1	9.71	9.71	9.59	9.34	9.11	8.93							
140	11.1	11.1	11.1	11.3	11.6	11.9	10.4	10.3	10.2	9.95	9.75	9.62							
145	11.9	11.8	11.8	11.9	12.3	12.6	10.9	10.9	10.8	10.5	10.3	10.2							
150	12.5	12.4	12.3	12.5	12.8	13.0	11.3	11.3	11.2	10.9	10.7	10.7							
155	12.9	12.8	12.7	12.9	13.1	13.3	11.6	11.7	11.6	11.4	11.1	11.1							
160	13.3	13.1	13.0	13.2	13.3	13.4	11.9	12.0	12.0	11.8	11.6	11.5							
165	13.5	13.4	13.3	13.5	13.5	13.5	12.3	12.4	12.5	12.3	12.1	11.9							
170	13.7	13.6	13.5	13.7	13.6	13.5	12.9	12.8	13.0	12.9	12.6	12.4							
175	13.7	13.7	13.7	13.9	13.7	13.5	13.3	13.3	13.5	13.4	13.1	12.9							
180	13.8	13.7	13.8	13.9	13.6	13.4	13.8	13.7	13.8	13.8	13.6	13.4							

C Range: 0 - 360DEG
C Interval: 30.0DEG
Test Speed: HIGH
Temperature:25.3℃
Operators:
Test Date:2025-04-07

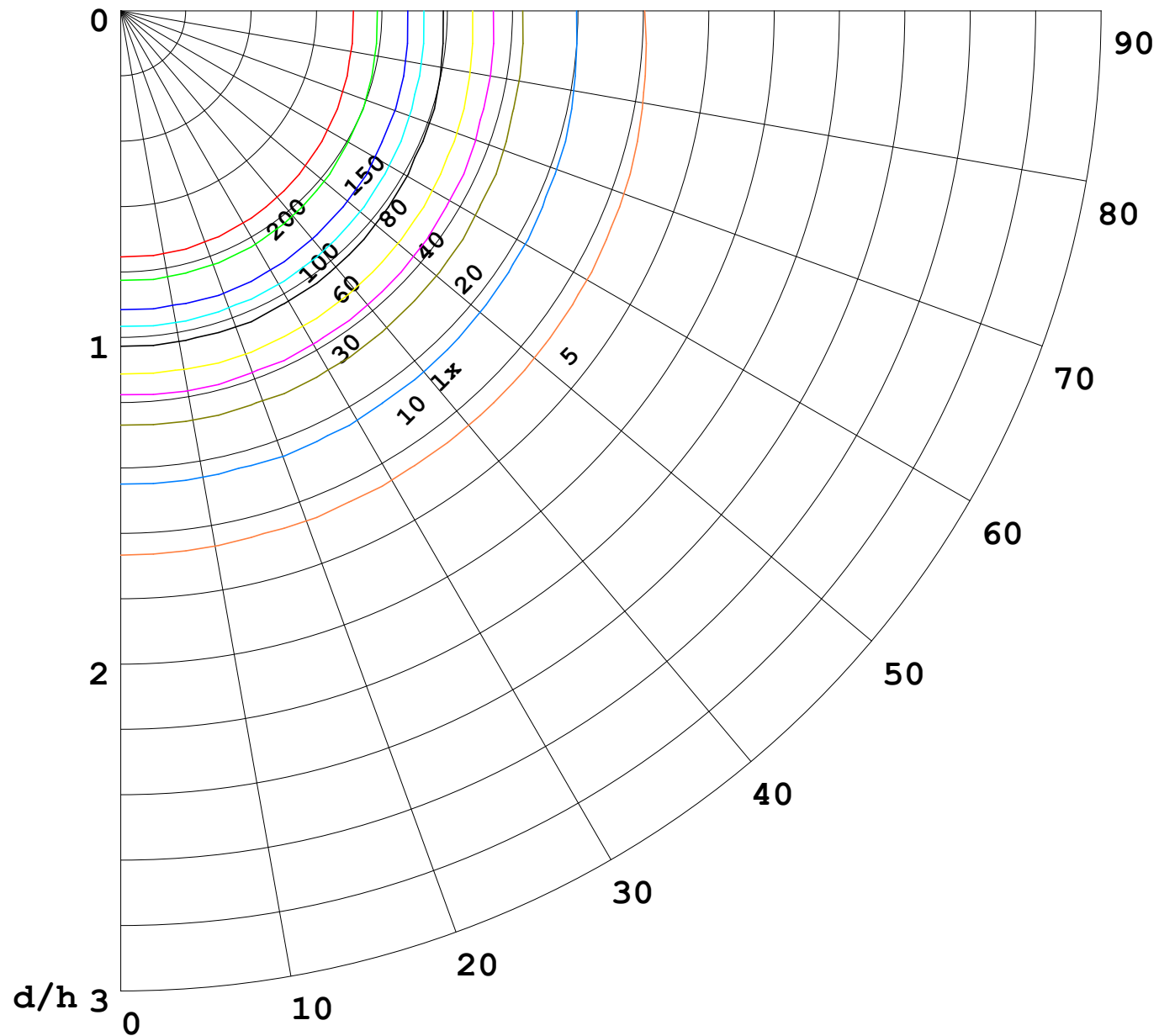
γ Range: 0 - 180DEG
γ Interval: 1.0DEG
Test System:EVERFINE GO-2000B_V1 SYSTEM V2.00.488
Humidity:65.0%
Test Distance:6.360m [K=1.0000]
Remarks:

I (cd)



1000 lm

$\kappa = 1$



F = 1000 lm
 K = 0.7
 Hcc = 0.8 m
 Hfc = 0.0 m
 Eave = 100 lx

	Pcc	Pw	Pfc
—————	70	50	30
—————	50	30	20

