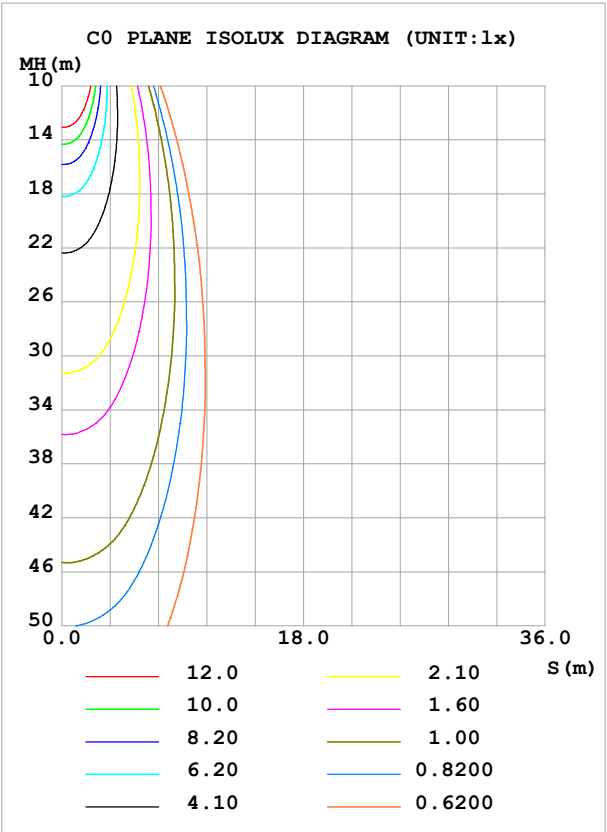
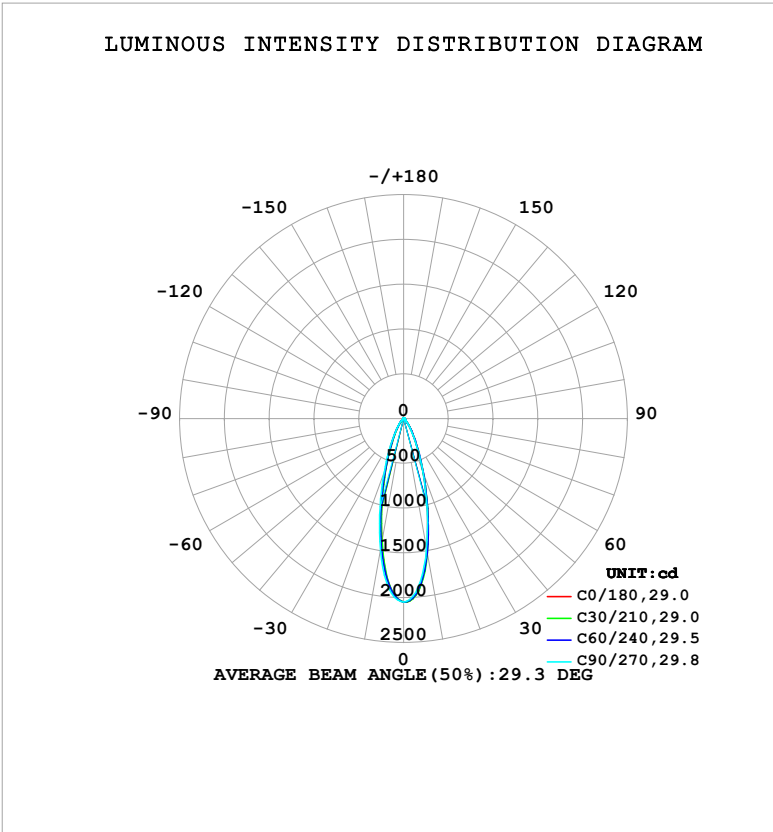


LUMINAIRE PHOTOMETRIC TEST REPORT

Test:U:24.00V I:0.7550A P:18.12W PF:1.000 Freq:0Hz		
Lamp Flux:782.213x1 lm		
NAME: AW01-24V-3030-18-DMX4-RGBW(3000K)-80-40-A-1000-TYPE:		WEIGHT:
SPEC.:	DIM.: Length=1m	SERIAL No.:
MFR.: OLympia lighting	SUR.:	Shielding Angle:

DATA OF LAMP		PHOTOMETRIC DATA				Eff: 43.17 lm/W
MODEL	3030	I _{max} (cd)	2051	S/MH(C0/180)	0.47	
NOMINAL POWER(W)		LOR(%)	100.0	S/MH(C90/270)	0.50	
RATED VOLTAGE(V)	24	TOTAL FLUX(lm)	782.21	η UP,DN(C0-180)	1.9,48.2	
NOMINAL FLUX(lm)	782.213	CIE CLASS	DIRECT	η UP,DN(C180-360)	1.8,48.1	
LAMPS INSIDE	1	η up (%)	3.7	CIBSE SHR NOM	0.50	
TEST VOLTAGE(V)		η down (%)	96.3	CIBSE SHR MAX	0.50	



C Range: 0 - 360DEG
C Interval: 30.0DEG
Test Speed: HIGH
Temperature:25.3℃
Operators:
Test Date:2025-04-23

γ Range: 0 - 180DEG
γ Interval: 1.0DEG
Test System:EVERFINE GO-2000B_V1 SYSTEM V2.00.488
Humidity:65.0%
Test Distance:6.360m [K=1.0000]
Remarks:

ZONAL FLUX DIAGRAM

ZONAL FLUX DIAGRAM:

γ	C0	C45	C90	C135	C180	C225	C270	C315	γ	Φ zone	Φ total	%lum, lamp
10	1503	1526	1480	1402	1410	1418	1495	1557	0- 10	167.1	167.1	21.4,21.4
20	638.9	648.2	628.8	582.3	579.6	580.3	636.7	682.1	10- 20	274.9	442.0	56.5,56.5
30	227.4	223.1	213.7	202.5	205.3	194.6	217.3	242.5	20- 30	173.3	615.3	78.7,78.7
40	79.07	77.15	75.97	71.86	72.02	66.18	73.62	83.75	30- 40	81.99	697.2	89.1,89.1
50	22.31	24.10	25.26	21.61	20.56	19.31	21.84	23.55	40- 50	33.75	731.0	93.5,93.5
60	6.069	6.963	8.050	6.156	5.805	6.228	6.794	6.168	50- 60	10.94	741.9	94.8,94.8
70	3.695	4.003	5.031	3.818	3.529	4.083	4.224	3.548	60- 70	4.826	746.8	95.5,95.5
80	2.984	3.019	3.707	3.015	2.781	3.151	3.313	2.793	70- 80	3.671	750.4	95.9,95.9
90	2.264	2.202	2.150	2.207	2.202	2.205	2.083	2.131	80- 90	2.867	753.3	96.3,96.3
100	2.119	2.144	2.203	2.203	2.099	2.182	2.168	2.152	90-100	2.305	755.6	96.6,96.6
110	2.573	2.678	2.839	2.836	2.667	2.808	2.820	2.680	100-110	2.540	758.1	96.9,96.9
120	3.816	3.942	4.192	4.231	3.917	4.027	3.982	3.817	110-120	3.280	761.4	97.3,97.3
130	5.828	5.852	5.999	6.179	5.550	5.532	5.372	5.327	120-130	4.326	765.7	97.9,97.9
140	7.821	7.669	7.560	7.930	6.755	6.704	6.506	6.557	130-140	5.018	770.8	98.5,98.5
150	8.942	8.646	8.359	8.824	7.319	7.297	7.053	7.164	140-150	4.792	775.5	99.1,99.1
160	8.935	8.561	8.336	8.761	7.454	7.465	7.131	7.229	150-160	3.715	779.3	99.6,99.6
170	8.080	7.830	8.003	8.133	7.339	7.454	7.313	7.118	160-170	2.223	781.5	99.9,99.9
180	7.500	7.654	7.876	7.627	7.483	7.652	7.876	7.616	170-180	0.7254	782.2	100,100
DEG	LUMINOUS INTENSITY:cd									UNIT:lm		

Conical surface Flux(90deg): 718.36 lm

%lum = 91.8%

%lamp = 91.8%

Conical surface Flux(130deg): 744.58 lm

%lum = 95.2%

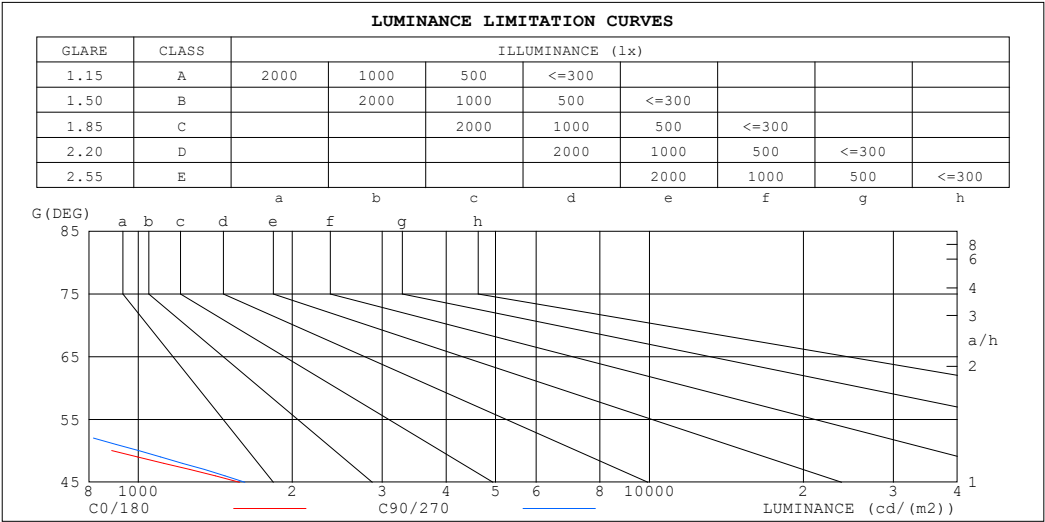
%lamp = 95.2%

C Range: 0 - 360DEG
 C Interval: 30.0DEG
 Test Speed: HIGH
 Temperature:25.3℃
 Operators:
 Test Date:2025-04-23

γ Range: 0 - 180DEG
 γ Interval: 1.0DEG
 Test System:EVERFINE GO-2000B_V1 SYSTEM V2.00.488
 Humidity:65.0%
 Test Distance:6.360m [K=1.0000]
 Remarks:

LUMINANCE LIMITATION CURVES

Test:U:24.00V I:0.7550A P:18.12W PF:1.000 Freq:0Hz Lamp Flux:782.213x1 lm		
NAME: AW01-24V-3030-18-DMX4-RGBW(3000K)-80-40-A-1000- C TYPE:	WEIGHT:	
SPEC.:	DIM.: Length=1m	SERIAL No.:
MFR.: OLympia lighting	SUR.:	Shielding Angle:



LUMINANCE cd/(m2)		
G (DEG)	C0/180	C90/270
85	775	864
80	439	544
75	324	430
70	276	375
65	267	355
60	310	410
55	479	605
50	887	1001
45	1576	1616

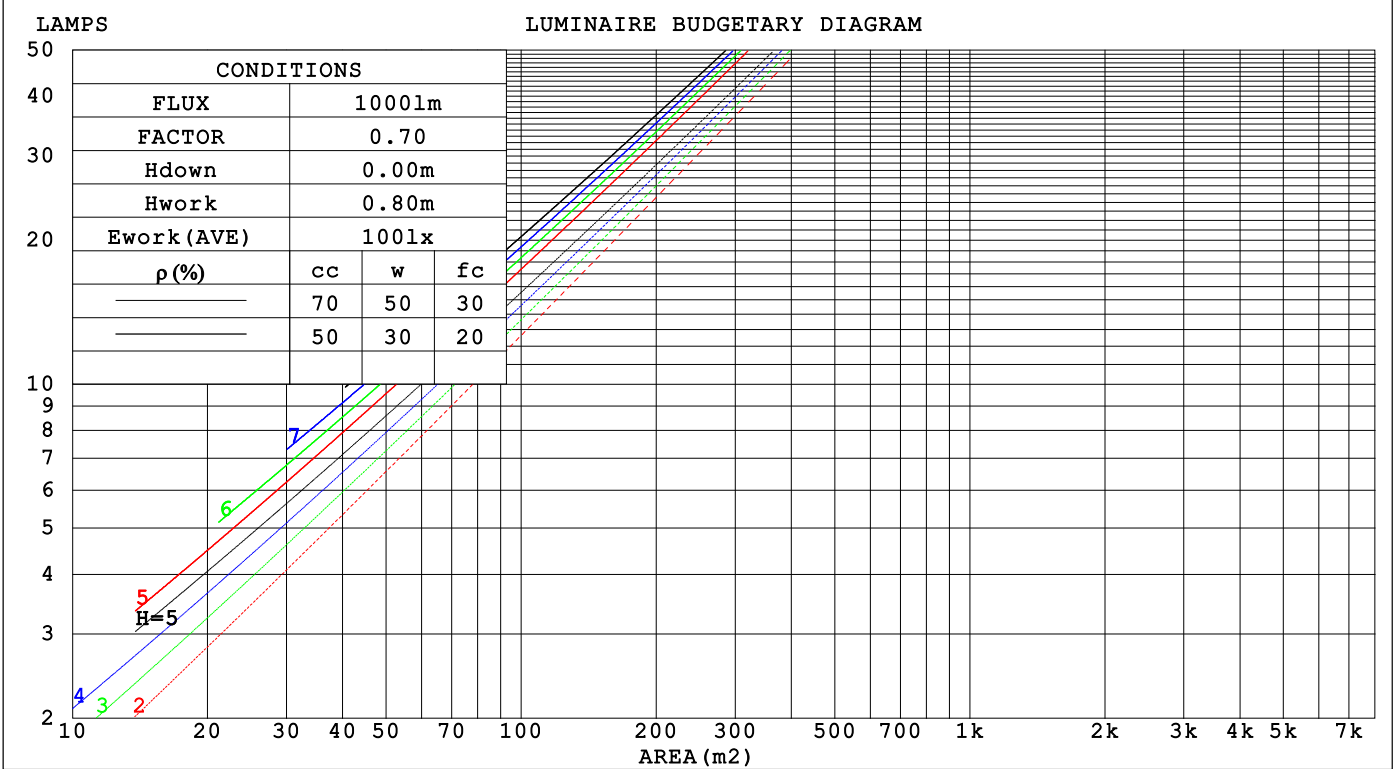
C Range: 0 - 360DEG
C Interval: 30.0DEG
Test Speed: HIGH
Temperature:25.3℃
Operators:
Test Date:2025-04-23

γ Range: 0 - 180DEG
γ Interval: 1.0DEG
Test System:EVERFINE GO-2000B_V1 SYSTEM V2.00.488
Humidity:65.0%
Test Distance:6.360m [K=1.0000]
Remarks:

CU AND LUMINAIRE BUDGETARY ESTIMATE DIAGRAM

Test:U:24.00V I:0.7550A P:18.12W PF:1.000 Freq:0Hz		
Lamp Flux:782.213x1 lm		
NAME: AW01-24V-3030-18-DMX4-RGBW(3000K)-80-40-A-1000-TYPE:		WEIGHT:
SPEC.:	DIM.: Length=1m	SERIAL No.:
MFR.: OLYMPIA lighting	SUR.:	Shielding Angle:

pcc	80%			70%			50%			30%			10%			0
pw	50%	30%	10%	50%	30%	10%	50%	30%	10%	50%	30%	10%	50%	30%	10%	0
pfc	20%			20%			20%			20%			20%			0
RCR	RCR:Room Cavity Ratio															



WEC AND CCEC

Test:U:24.00V I:0.7550A P:18.12W PF:1.000 Freq:0Hz Lamp Flux:782.213x1 lm		
NAME: AW01-24V-3030-18-DMX4-RGBW(3000K)-80-40-A-1000- TYPE :	WEIGHT:	
SPEC.:	DIM.: Length=1m	SERIAL No.:
MFR.: OLympia lighting	SUR.:	Shielding Angle:

pcc	80%			70%			50%			30%			10%			0														
pw	50%	30%	10%	50%	30%	10%	50%	30%	10%	50%	30%	10%	50%	30%	10%	0														
pfc	20%			20%			20%			20%			20%			0														
RCR	RCR:Room Cavity Ratio															Wall Exitance Coefficients(WEC)														
0.0																														
1.0	.170	.097	.031	.162	.092	.029	.147	.085	.027	.134	.077	.025	.121	.070	.023															
2.0	.159	.087	.027	.152	.084	.026	.140	.078	.024	.128	.072	.023	.118	.067	.021															
3.0	.149	.079	.024	.143	.077	.023	.133	.072	.022	.123	.067	.021	.114	.063	.019															
4.0	.140	.073	.021	.135	.071	.021	.126	.067	.020	.117	.063	.019	.109	.059	.018															
5.0	.133	.068	.020	.128	.066	.019	.120	.063	.018	.112	.059	.018	.105	.056	.017															
6.0	.126	.063	.018	.122	.062	.018	.115	.059	.017	.108	.056	.016	.102	.053	.016															
7.0	.119	.059	.017	.116	.058	.016	.110	.055	.016	.104	.053	.015	.098	.051	.015															
8.0	.114	.056	.016	.111	.054	.015	.105	.052	.015	.099	.050	.015	.094	.048	.014															
9.0	.109	.053	.015	.106	.052	.014	.101	.050	.014	.096	.048	.014	.091	.046	.013															
10.0	.104	.050	.014	.101	.049	.014	.097	.047	.013	.092	.046	.013	.088	.044	.013															

pcc	80%			70%			50%			30%			10%			0
pw	50%	30%	10%	50%	30%	10%	50%	30%	10%	50%	30%	10%	50%	30%	10%	0
pfc	20%			20%			20%			20%			20%			0
RCR	RCR:Room Cavity Ratio						Ceiling Cavity Exitance Coefficients(CCEC)									
0.0	.219	.219	.219	.187	.187	.187	.128	.128	.128	.073	.073	.073	.023	.023	.023	
1.0	.199	.186	.174	.170	.159	.150	.116	.110	.103	.067	.063	.060	.021	.020	.019	
2.0	.183	.161	.143	.157	.139	.123	.107	.096	.086	.062	.056	.050	.020	.018	.016	
3.0	.170	.142	.120	.146	.123	.104	.100	.085	.073	.058	.050	.043	.019	.016	.014	
4.0	.159	.127	.103	.136	.110	.090	.094	.077	.063	.054	.045	.037	.017	.015	.012	
5.0	.150	.116	.091	.128	.100	.079	.088	.070	.056	.051	.041	.033	.017	.013	.011	
6.0	.141	.106	.081	.122	.092	.070	.084	.064	.050	.049	.038	.030	.016	.012	.010	
7.0	.135	.098	.073	.116	.085	.064	.080	.060	.045	.046	.035	.027	.015	.012	.009	
8.0	.128	.092	.067	.111	.080	.058	.077	.056	.041	.045	.033	.025	.014	.011	.008	
9.0	.123	.087	.062	.106	.075	.054	.073	.053	.038	.043	.031	.023	.014	.010	.008	
10.0	.118	.082	.058	.102	.071	.051	.071	.050	.036	.041	.030	.022	.013	.010	.007	

C Range: 0 - 360DEG
C Interval: 30.0DEG
Test Speed: HIGH
Temperature:25.3℃
Operators:
Test Date:2025-04-23

γ Range: 0 - 180DEG
γ Interval: 1.0DEG
Test System:EVERFINE GO-2000B_V1 SYSTEM V2.00.488
Humidity:65.0%
Test Distance:6.360m [K=1.0000]
Remarks:

UGR(Unified Glare Rating) Table

Test:U:24.00V I:0.7550A P:18.12W PF:1.000 Freq:0Hz Lamp Flux:782.213x1 lm										
NAME: AW01-24V-3030-18-DMX4-RGBW(3000K)-80-40-A-1000- TYPE :							WEIGHT:			
SPEC.:					DIM.: Length=1m			SERIAL No.:		
MFR.: OLympia lighting					SUR.:			Shielding Angle:		
ceiling/cavity	0.7	0.7	0.5	0.5	0.3	0.7	0.7	0.5	0.5	0.3
walls	0.5	0.3	0.5	0.3	0.3	0.5	0.3	0.5	0.3	0.3
working plane	0.2	0.2	0.2	0.2	0.2	0.2	0.2	0.2	0.2	0.2
Room dimensions	Viewed crosswise					Viewed endwise				
x = 2H y = 2H	13.0	13.8	13.3	14.0	14.3	13.1	13.9	13.4	14.2	14.4
3H	13.0	13.7	13.3	14.0	14.3	13.2	13.9	13.5	14.2	14.4
4H	13.0	13.7	13.4	14.0	14.3	13.3	14.0	13.6	14.3	14.6
6H	13.2	13.8	13.5	14.1	14.4	13.5	14.2	13.8	14.5	14.8
8H	13.3	13.9	13.6	14.2	14.6	13.6	14.3	14.0	14.6	14.9
12H	13.4	14.1	13.8	14.4	14.7	13.8	14.5	14.2	14.8	15.1
4H 2H	12.8	13.6	13.2	13.8	14.1	13.0	13.7	13.3	13.9	14.2
3H	12.9	13.5	13.3	13.8	14.2	13.1	13.7	13.5	14.0	14.4
4H	13.0	13.6	13.4	13.9	14.3	13.3	13.8	13.7	14.2	14.6
6H	13.3	13.8	13.7	14.2	14.6	13.6	14.1	14.1	14.5	14.9
8H	13.5	13.9	13.9	14.4	14.8	13.9	14.3	14.3	14.7	15.2
12H	13.8	14.2	14.3	14.6	15.1	14.2	14.6	14.7	15.1	15.5
8H 4H	13.0	13.5	13.5	13.9	14.3	13.2	13.7	13.7	14.1	14.6
6H	13.4	13.8	13.9	14.2	14.7	13.7	14.1	14.2	14.6	15.1
8H	13.7	14.1	14.2	14.5	15.1	14.1	14.4	14.6	14.9	15.4
12H	14.2	14.5	14.8	15.0	15.6	14.6	14.9	15.2	15.4	16.0
12H 4H	13.0	13.4	13.5	13.8	14.3	13.2	13.7	13.7	14.1	14.5
6H	13.4	13.8	13.9	14.3	14.8	13.8	14.1	14.3	14.6	15.1
8H	13.8	14.1	14.4	14.6	15.2	14.2	14.5	14.7	15.0	15.5
Variations with the observer position at spacings(CIE Pub.117):										
S = 1.0H	+ 1.8 / - 2.5					+ 1.4 / - 2.1				
1.5H	+ 3.1 / - 2.4					+ 2.5 / - 2.1				
2.0H	+ 3.1 / - 1.5					+ 2.8 / - 1.3				

CIE Pub.117, 782.2 lm Total Lamp Luminous Flux Correct (8log(F/F0) = -0.9)
Area: 0.0392 m2

C Range: 0 - 360DEG
C Interval: 30.0DEG
Test Speed: HIGH
Temperature:25.3℃
Operators:
Test Date:2025-04-23

γ Range: 0 - 180DEG
γ Interval: 1.0DEG
Test System:EVERFINE GO-2000B_V1 SYSTEM V2.00.488
Humidity:65.0%
Test Distance:6.360m [K=1.0000]
Remarks:

UTILIZATION FACTORS TABLE

Test:U:24.00V I:0.7550A P:18.12W PF:1.000 Freq:0Hz Lamp Flux:782.213x1 lm		
NAME: AW01-24V-3030-18-DMX4-RGBW(3000K)-80-40-A-1000- TYPE :		WEIGHT:
SPEC.:	DIM.: Length=1m	SERIAL No.:
MFR.: OLympia lighting	SUR.:	Shielding Angle:

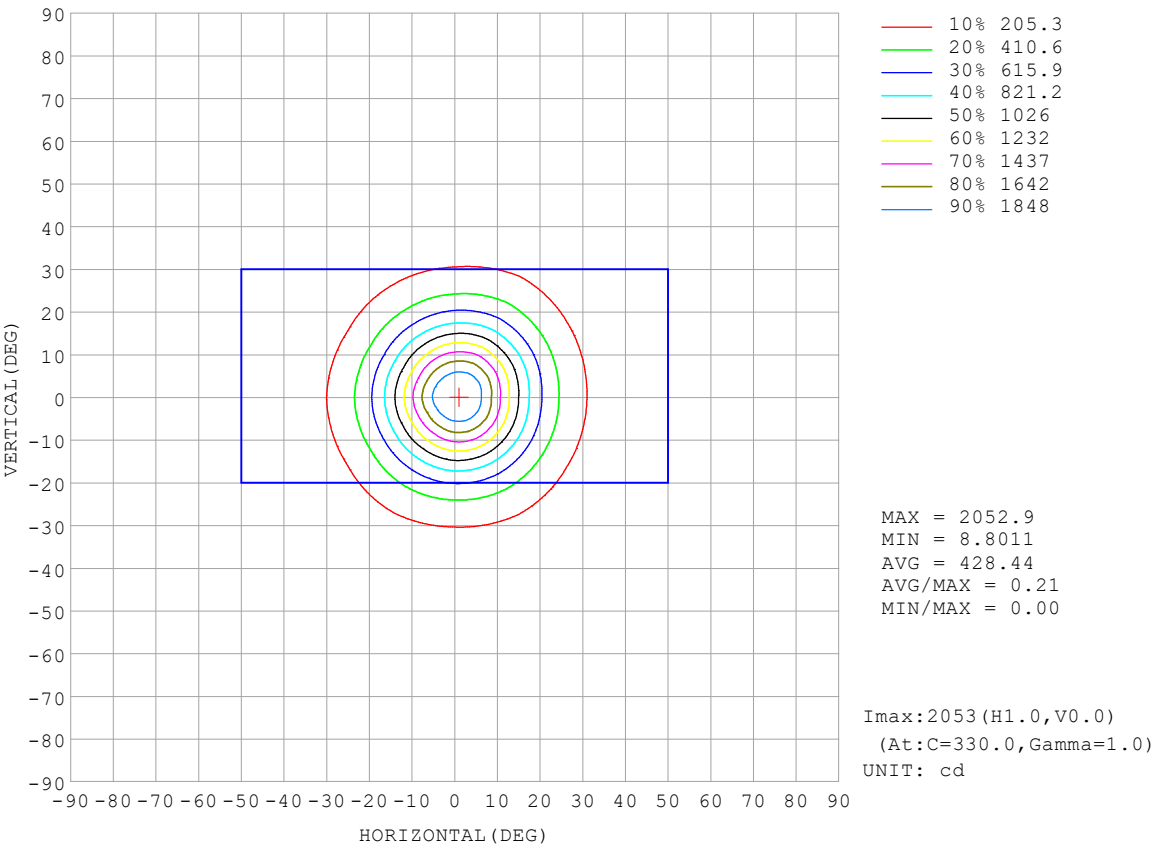
REFLECTANCE										
Ceiling	0.8	0.8	0.8	0.7	0.7	0.7	0.5	0.5	0.5	0
Walls	0.7	0.5	0.3	0.7	0.5	0.3	0.7	0.5	0.3	0
Working plane	0.2	0.2	0.2	0.2	0.2	0.2	0.2	0.2	0.2	0
ROOM INDEX	UTILIZATION FACTORS (PERCENT) $k(RI) \times RCR = 5$									
$k = 0.60$	85	78	74	84	78	74	83	77	74	70
0.80	92	86	82	91	86	82	90	85	81	77
1.00	97	91	87	96	90	87	94	90	86	82
1.25	101	95	92	100	95	91	97	93	90	85
1.50	104	99	95	102	98	94	100	96	93	88
2.00	107	102	99	105	101	98	102	98	96	90
2.50	108	104	101	107	103	100	103	100	98	91
3.00	110	106	103	108	105	102	104	102	99	92
4.00	112	109	107	110	107	105	106	104	102	94
5.00	114	111	109	111	109	107	106	105	104	95
ROOM INDEX	UF (total)									Direct
According to DIN EN 13032-2 2004			Suspended					SHRNOM = 1.25		

C Range: 0 - 360DEG
 C Interval: 30.0DEG
 Test Speed: HIGH
 Temperature: 25.3°C
 Operators:
 Test Date: 2025-04-23

γ Range: 0 - 180DEG
 γ Interval: 1.0DEG
 Test System: EVERFINE GO-2000B_V1 SYSTEM V2.00.488
 Humidity: 65.0%
 Test Distance: 6.360m [K=1.0000]
 Remarks:

ISOCANDELA DIAGRAM

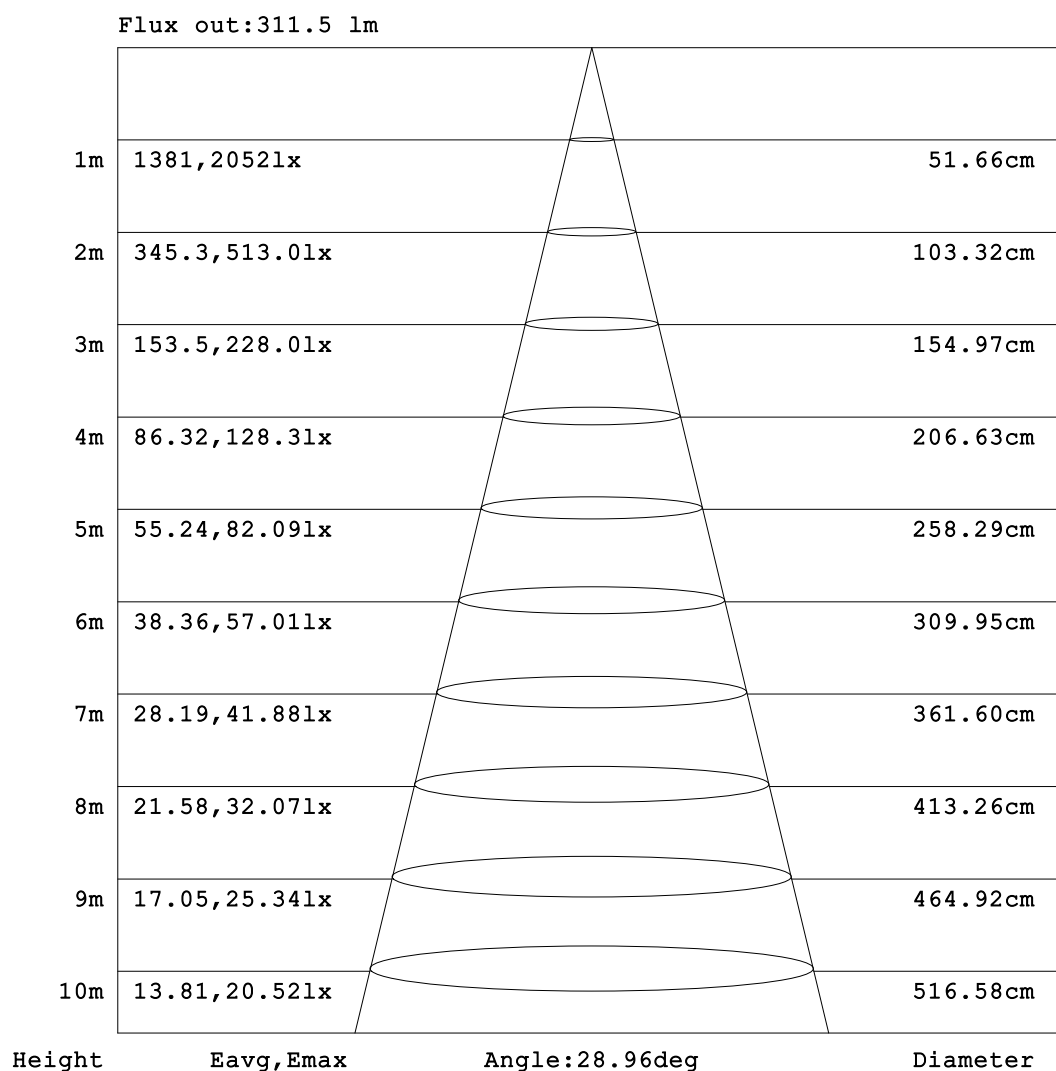
Test:U:24.00V I:0.7550A P:18.12W PF:1.000 Freq:0Hz Lamp Flux:782.213x1 lm		
NAME: AW01-24V-3030-18-DMX4-RGBW(3000K)-80-40-A-1000- C TYPE:	WEIGHT:	
SPEC.:	DIM.: Length=1m	SERIAL No.:
MFR.: OLympia lighting	SUR.:	Shielding Angle:



C Range: 0 - 360DEG	γ Range: 0 - 180DEG
C Interval: 30.0DEG	γ Interval: 1.0DEG
Test Speed: HIGH	Test System:EVERFINE GO-2000B_V1 SYSTEM V2.00.488
Temperature:25.3℃	Humidity:65.0%
Operators:	Test Distance:6.360m [K=1.0000]
Test Date:2025-04-23	Remarks:

AAI Figure

Test:U:24.00V I:0.7550A P:18.12W PF:1.000 Freq:0Hz Lamp Flux:782.213lx 1m		
NAME: AW01-24V-3030-18-DMX4-RGBW(3000K)-80-40-A-1000- C TYPE:	WEIGHT:	
SPEC.:	DIM.: Length=1m	SERIAL No.:
MFR.: OLympia lighting	SUR.:	Shielding Angle:



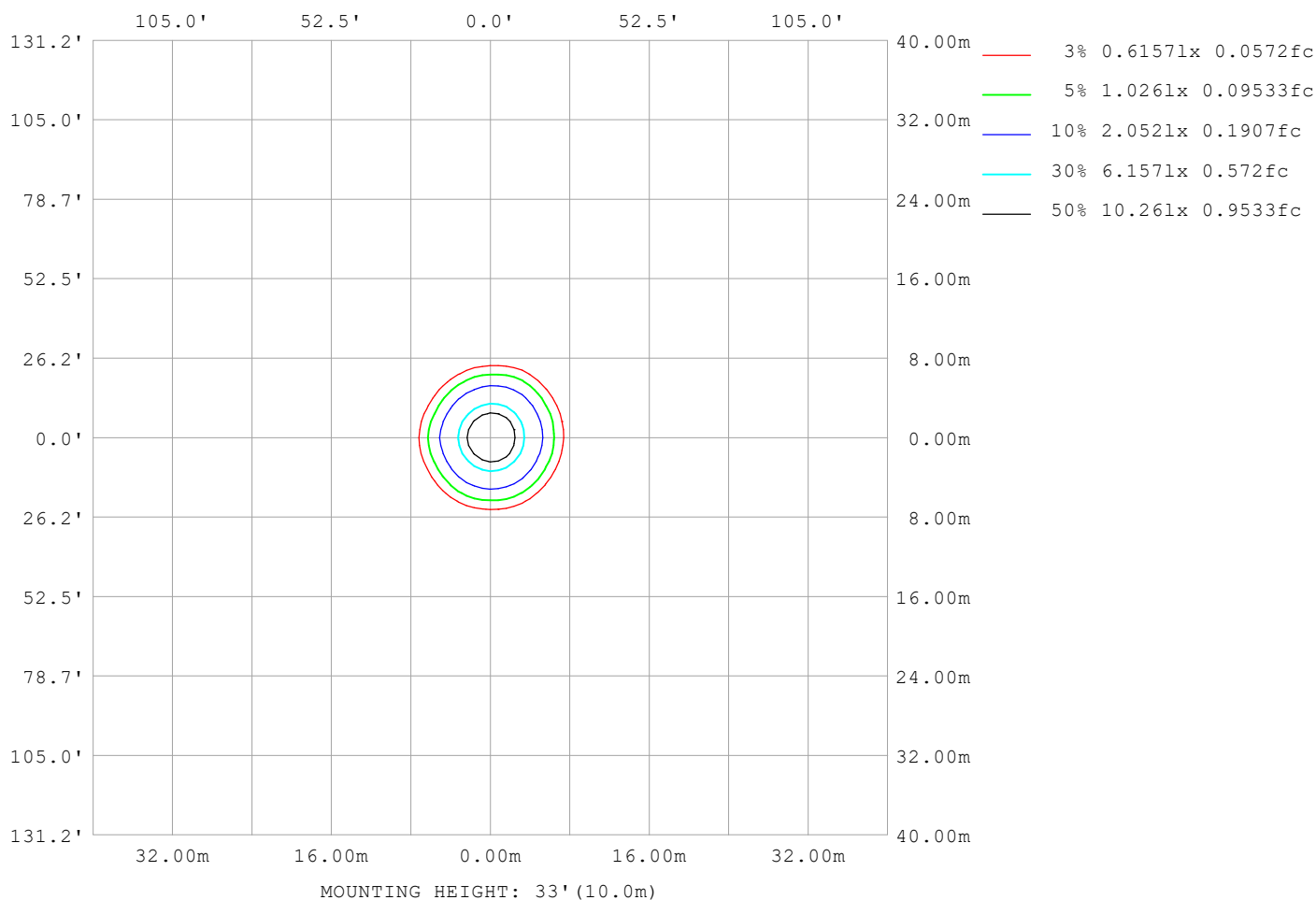
Note:The Curves indicate the illuminated area and the average illumination when the luminaire is at different distance.

C Range: 0 - 360DEG
C Interval: 30.0DEG
Test Speed: HIGH
Temperature:25.3℃
Operators:
Test Date:2025-04-23

γ Range: 0 - 180DEG
γ Interval: 1.0DEG
Test System:EVERFINE GO-2000B_V1 SYSTEM V2.00.488
Humidity:65.0%
Test Distance:6.360m [K=1.0000]
Remarks:

ISOLUX DIAGRAM

Test:U:24.00V I:0.7550A P:18.12W PF:1.000 Freq:0Hz Lamp Flux:782.213x1 lm		
NAME: AW01-24V-3030-18-DMX4-RGBW(3000K)-80-40-A-1000- C TYPE:	WEIGHT:	
SPEC.:	DIM.: Length=1m	SERIAL No.:
MFR.: OLympia lighting	SUR.:	Shielding Angle:



C Range: 0 - 360DEG
C Interval: 30.0DEG
Test Speed: HIGH
Temperature:25.3℃
Operators:
Test Date:2025-04-23

γ Range: 0 - 180DEG
γ Interval: 1.0DEG
Test System:EVERFINE GO-2000B_V1 SYSTEM V2.00.488
Humidity:65.0%
Test Distance:6.360m [K=1.0000]
Remarks:

LED Avg.L Report

Test:U:24.00V I:0.7550A P:18.12W PF:1.000 Freq:0Hz Lamp Flux:782.213x1 lm		
NAME: AW01-24V-3030-18-DMX4-RGBW(3000K)-80-40-A-1000- C TYPE:		WEIGHT:
SPEC.:	DIM.: Length=1m	SERIAL No.:
MFR.: OLympia lighting	SUR.:	Shielding Angle:

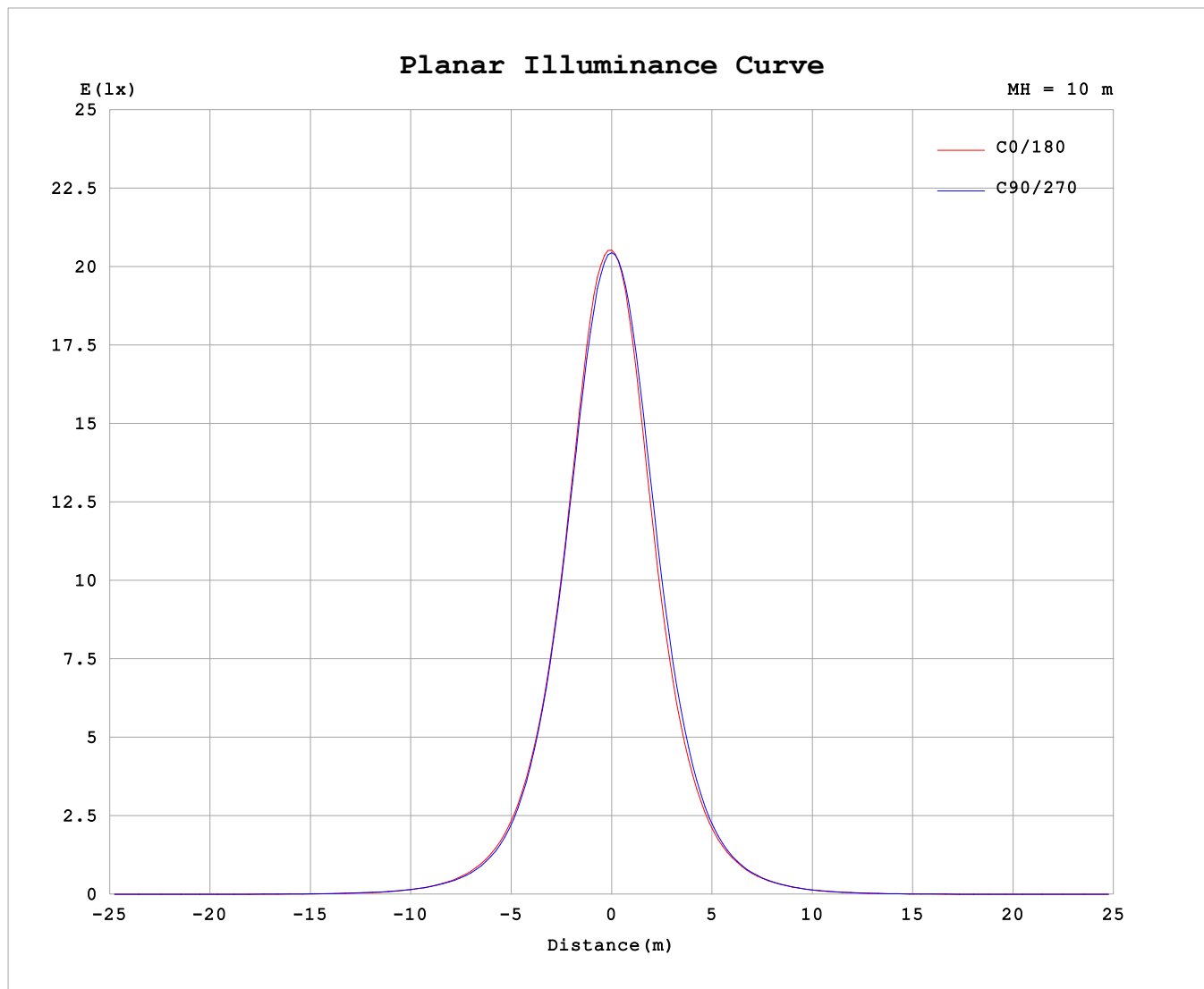
AvgL	cd/m2
L_0~180 (65) av	261
L_0~180 (75) av	315
L_0~180 (85) av	753
L_90~270 (65) av	329
L_90~270 (75) av	399
L_90~270 (85) av	848
L_45 (65) av	277
L_45 (75) av	329
L_45 (85) av	752

Standard: GB/T 29293-2012

C Range: 0 - 360DEG
C Interval: 30.0DEG
Test Speed: HIGH
Temperature:25.3℃
Operators:
Test Date:2025-04-23

γ Range: 0 - 180DEG
γ Interval: 1.0DEG
Test System:EVERFINE GO-2000B_V1 SYSTEM V2.00.488
Humidity:65.0%
Test Distance:6.360m [K=1.0000]
Remarks:

Planar Illuminance Curve



C Range: 0 - 360DEG
C Interval: 30.0DEG
Test Speed: HIGH
Temperature: 25.3 °C
Operators:
Test Date: 2025-04-23

γ Range: 0 - 180DEG
 γ Interval: 1.0DEG
Test System: EVERFINE GO-2000B_V1 SYSTEM V2.00.488
Humidity: 65.0%
Test Distance: 6.360m [K=1.0000]
Remarks:

LUMINOUS DISTRIBUTION INTENSITY DATA

Test:U:24.00V I:0.7550A P:18.12W PF:1.000 Freq:0Hz Lamp Flux:782.213x1 lm											
NAME: AW01-24V-3030-18-DMX4-RGBW(3000K)-80-40-A-1000- TYPE :										WEIGHT:	
SPEC.:					DIM.: Length=1m					SERIAL No.:	
MFR.: OLympia lighting					SUR.:					Shielding Angle:	

Table--1

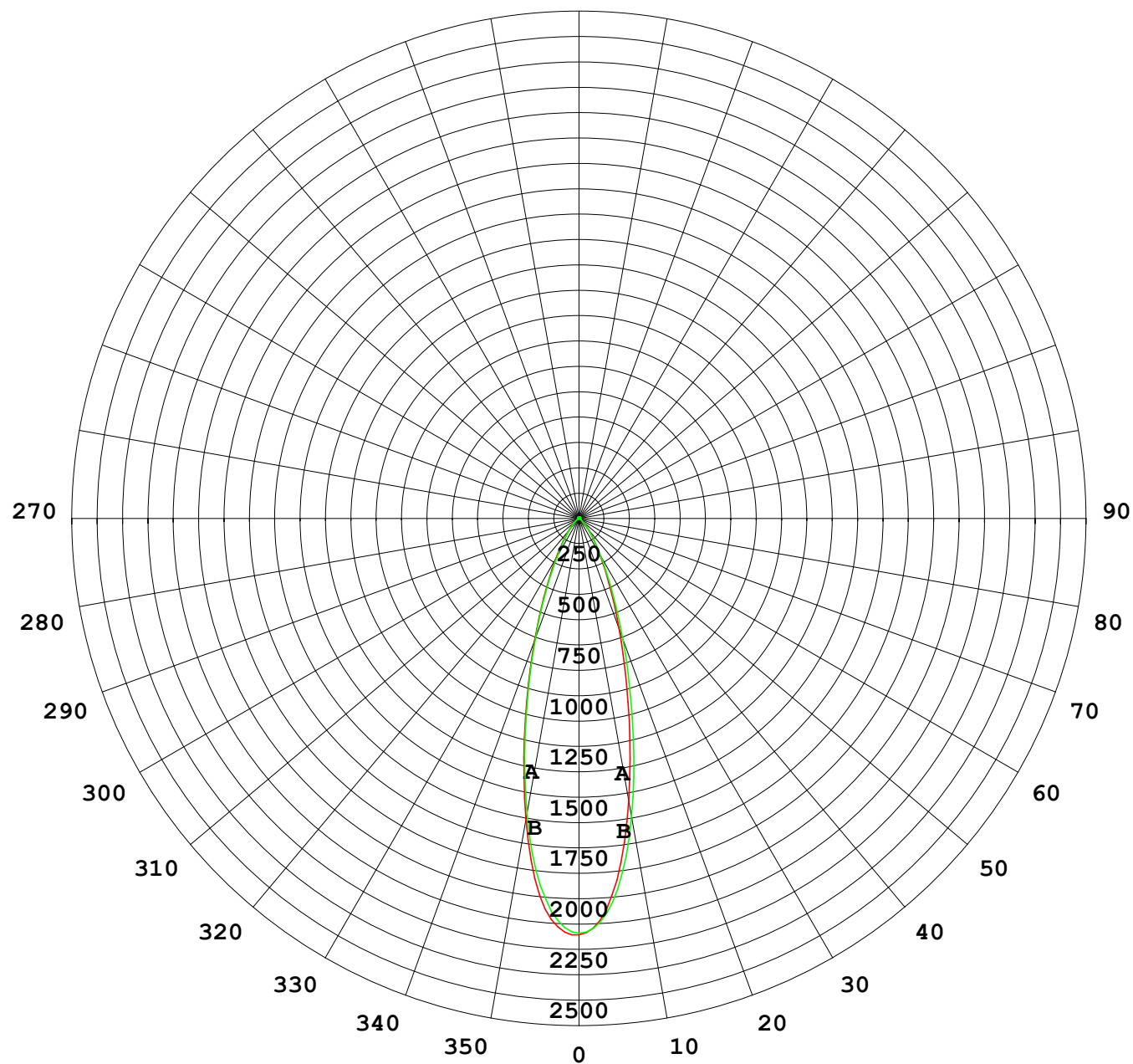
UNIT: cd

C (DEG) γ (DEG)	0	30	60	90	120	150	180	210	240	270	300	330							
0	2047	2047	2047	2047	2047	2047	2047	2047	2047	2047	2047	2047							
5	1927	1933	1916	1886	1857	1844	1860	1855	1867	1903	1942	1952							
10	1503	1530	1523	1480	1416	1388	1410	1395	1440	1495	1559	1555							
15	1022	1039	1040	1010	954	923	936	926	963	1020	1079	1071							
20	639	647	649	629	596	569	580	567	593	637	686	679							
25	386	382	388	371	360	332	349	328	346	376	418	406							
30	227	219	227	214	212	193	205	188	202	217	249	236							
35	136	128	133	126	126	115	122	110	118	127	147	140							
40	79.1	75.8	78.5	76.0	74.5	69.2	72.0	65.0	67.4	73.6	85.4	82.1							
45	43.6	43.5	45.2	44.9	42.3	39.5	40.1	36.2	37.1	41.2	47.0	45.5							
50	22.3	23.5	24.7	25.3	22.5	20.8	20.6	19.2	19.4	21.8	23.9	23.2							
55	10.7	12.1	12.8	13.6	11.4	10.2	10.1	10.1	10.2	11.5	11.7	11.1							
60	6.07	6.80	7.12	8.05	6.50	5.81	5.80	6.26	6.19	6.79	6.41	5.92							
65	4.42	4.85	4.97	5.89	4.78	4.28	4.22	4.85	4.65	5.02	4.52	4.13							
70	3.70	3.96	4.04	5.03	4.00	3.64	3.53	4.27	3.89	4.22	3.70	3.39							
75	3.28	3.42	3.47	4.37	3.52	3.21	3.10	3.74	3.42	3.73	3.22	2.99							
80	2.98	3.02	3.02	3.71	3.12	2.91	2.78	3.29	3.02	3.31	2.89	2.70							
85	2.64	2.60	2.57	2.96	2.60	2.60	2.50	2.79	2.57	2.84	2.55	2.42							
90	2.26	2.23	2.17	2.15	2.16	2.25	2.20	2.31	2.10	2.08	2.21	2.05							
95	2.13	2.11	2.08	2.11	2.11	2.11	2.06	2.08	2.09	2.04	2.10	2.00							
100	2.12	2.14	2.15	2.20	2.21	2.20	2.10	2.13	2.23	2.17	2.21	2.10							
105	2.27	2.31	2.36	2.43	2.45	2.41	2.31	2.36	2.49	2.43	2.42	2.29							
110	2.57	2.63	2.73	2.84	2.87	2.80	2.67	2.74	2.87	2.82	2.75	2.61							
115	3.09	3.14	3.27	3.43	3.49	3.38	3.21	3.29	3.41	3.34	3.25	3.10							
120	3.82	3.86	4.02	4.19	4.28	4.18	3.92	3.99	4.07	3.98	3.89	3.74							
125	4.77	4.79	4.92	5.08	5.19	5.15	4.74	4.79	4.80	4.68	4.60	4.52							
130	5.83	5.83	5.88	6.00	6.16	6.20	5.55	5.56	5.51	5.37	5.34	5.31							
135	6.89	6.85	6.81	6.85	7.05	7.20	6.24	6.23	6.15	6.01	6.00	6.03							
140	7.82	7.75	7.59	7.56	7.81	8.05	6.76	6.74	6.67	6.51	6.54	6.57							
145	8.52	8.41	8.16	8.07	8.35	8.66	7.10	7.10	7.03	6.85	6.91	6.95							
150	8.94	8.82	8.47	8.36	8.65	9.00	7.32	7.33	7.26	7.05	7.14	7.19							
155	9.07	8.90	8.54	8.42	8.73	9.04	7.44	7.47	7.38	7.12	7.17	7.32							
160	8.93	8.74	8.38	8.34	8.64	8.88	7.45	7.51	7.42	7.13	7.11	7.35							
165	8.56	8.34	8.08	8.17	8.41	8.55	7.40	7.51	7.44	7.16	7.04	7.26							
170	8.08	7.84	7.82	8.00	8.13	8.14	7.34	7.43	7.47	7.31	7.10	7.13							
175	7.64	7.50	7.74	7.93	7.92	7.76	7.32	7.40	7.60	7.56	7.31	7.13							
180	7.50	7.51	7.80	7.88	7.72	7.54	7.48	7.51	7.79	7.88	7.71	7.52							

C Range: 0 - 360DEG
C Interval: 30.0DEG
Test Speed: HIGH
Temperature:25.3℃
Operators:
Test Date:2025-04-23

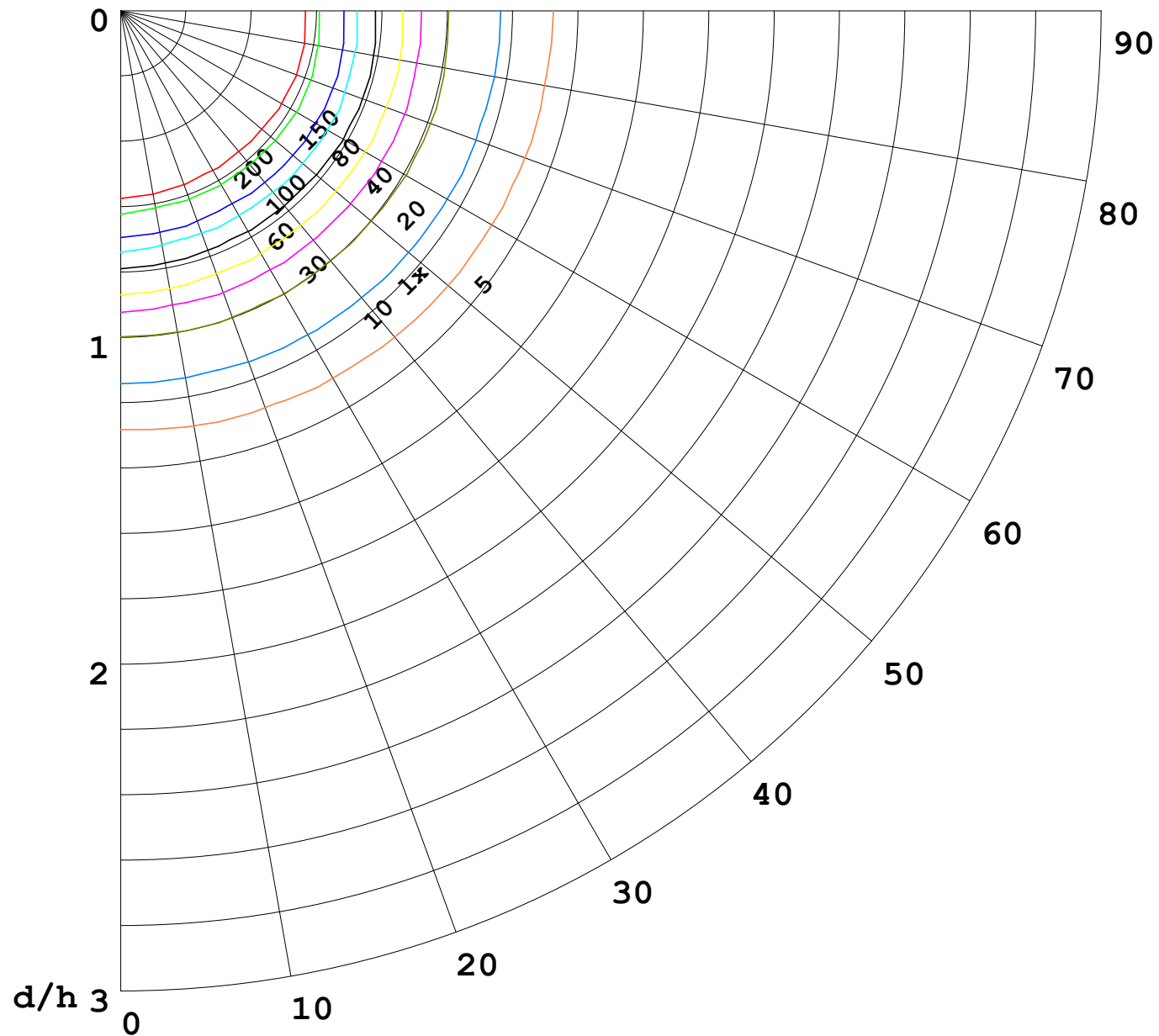
γ Range: 0 - 180DEG
γ Interval: 1.0DEG
Test System:EVERFINE GO-2000B_V1 SYSTEM V2.00.488
Humidity:65.0%
Test Distance:6.360m [K=1.0000]
Remarks:

I (cd)



1000 lm

$\kappa = 1$



F = 1000 lm
 K = 0.7
 Hcc = 0.8 m
 Hfc = 0.0 m
 Eave = 100 lx

	Pcc	Pw	Pfc
—————	70	50	30
—————	50	30	20

