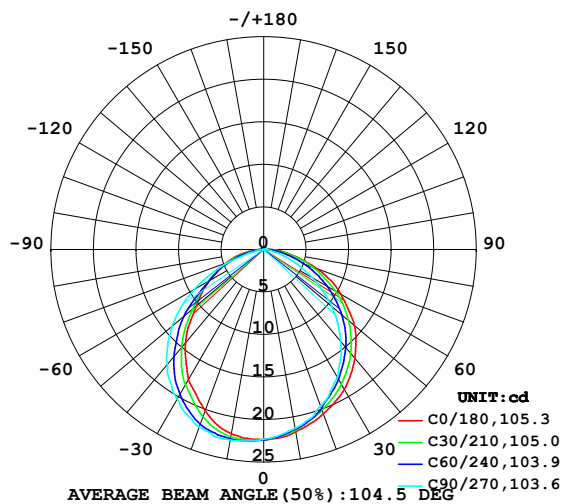


LUMINAIRE PHOTOMETRIC TEST REPORT

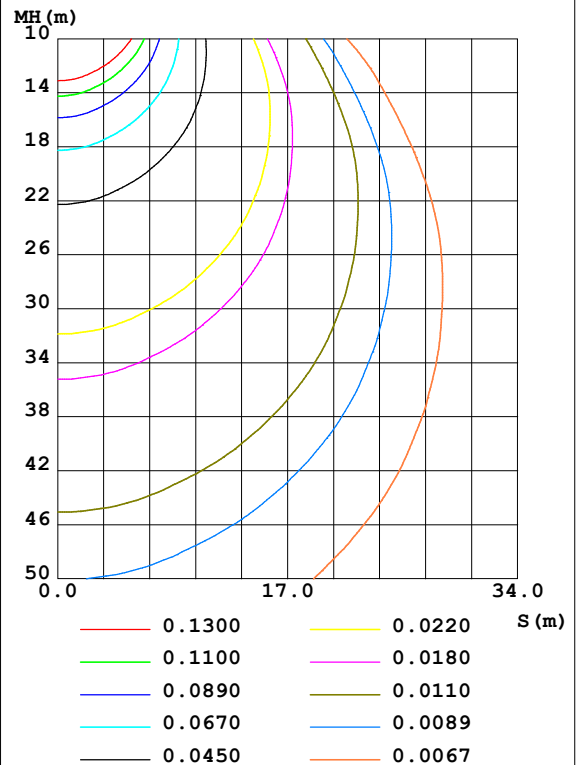
Test:U:24.00V I:0.2362A P:5.669W PF:1.000 Freq:50.00Hz Lamp Flux:0.865432x70 lm		
NAME: P01-24V-5050-70-SPI-RGBW(4000K)-B	TYPE:	WEIGHT:
SPEC.:	DIM.:	SERIAL No.:
MFR.: EVERFINE	SUR.:1*0.014	Shielding Angle:

DATA OF LAMP		PHOTOMETRIC DATA Eff: 10.69 lm/W			
MODEL	5050	I _{max} (cd)	22.77	S/MH (C0/180)	1.18
NOMINAL POWER (W)	12	LOR (%)	100.0	S/MH (C90/270)	1.34
RATED VOLTAGE (V)	24	TOTAL FLUX (lm)	60.580	η UP, DN (C0-180)	0.7, 46.2
NOMINAL FLUX (lm)	0.865432	CIE CLASS	DIRECT	η UP, DN (C180-360)	0.4, 52.7
LAMPS INSIDE	70	η up (%)	1.2	CIBSE SHR NOM	1.25
TEST VOLTAGE (V)	24	η down (%)	98.8	CIBSE SHR MAX	1.35

LUMINOUS INTENSITY DISTRIBUTION DIAGRAM



C0 PLANE ISOLUX DIAGRAM (UNIT:lx)



C Range: 0 - 360DEG
 C Interval: 30.0DEG
 Test Speed: HIGH
 Temperature: 25.3DEG
 Operators: LPC
 Test Date: 2021-10-20

γ Range: 0 - 120DEG
 γ Interval: 1.0DEG
 Test System: EVERFINE GO-2000B_V1 SYSTEM V2.0.362
 Humidity: 65.0%
 Test Distance: 9.200m [K=1.0000]
 Remarks:

ZONAL FLUX DIAGRAM

ZONAL FLUX DIAGRAM:

γ	C0	C45	C90	C135	C180	C225	C270	C315	γ	Φ zone	Φ total	%lum, lamp
10	21.79	21.51	21.37	21.37	22.00	22.45	22.74	22.60	0- 10	2.116	2.116	3.49,3.49
20	20.55	20.01	19.58	19.34	20.16	21.38	22.19	21.83	10- 20	6.045	8.162	13.5,13.5
30	18.96	17.93	17.32	16.58	17.68	19.02	20.34	20.37	20- 30	9.041	17.20	28.4,28.4
40	16.69	15.47	14.08	13.14	14.31	15.72	17.65	18.46	30- 40	10.74	27.94	46.1,46.1
50	13.93	12.49	10.47	9.349	10.31	11.59	14.13	15.66	40- 50	10.81	38.75	64,64
60	10.43	9.174	6.520	5.913	7.385	7.483	9.393	12.23	50- 60	9.320	48.07	79.3,79.3
70	6.738	5.667	3.058	3.400	4.742	4.460	4.257	8.055	60- 70	6.802	54.87	90.6,90.6
80	3.074	2.465	0.7826	1.274	2.219	1.726	0.5996	3.907	70- 80	3.760	58.63	96.8,96.8
90	0.8208	0.5627	0.1759	0.3142	0.3709	0.2164	0.0402	0.8901	80- 90	1.239	59.87	98.8,98.8
100	0.1910	0.2739	0.2063	0.3166	0.1408	0.1508	0.0402	0.1484	90-100	0.2861	60.16	99.3,99.3
110	0.1910	0.2763	0.2412	0.2990	0.1457	0.1734	0.0553	0.1432	100-110	0.2083	60.37	99.6,99.6
120	0.1960	0.2814	0.2613	0.3066	0.1457	0.1885	0.1257	0.1382	110-120	0.2041	60.57	100,100
130	0	0	0	0	0	0	0	0	120-130	0.0101	60.58	100,100
140	0	0	0	0	0	0	0	0	130-140	0	60.58	100,100
150	0	0	0	0	0	0	0	0	140-150	0	60.58	100,100
160	0	0	0	0	0	0	0	0	150-160	0	60.58	100,100
170	0	0	0	0	0	0	0	0	160-170	0	60.58	100,100
180	0	0	0	0	0	0	0	0	170-180	0	60.58	100,100
DEG	LUMINOUS INTENSITY:cd									UNIT:lm		

Conical surface Flux(90deg): 33.442 lm

%lum = 55.2%

%lamp = 55.2%

Conical surface Flux(120deg): 48.07 lm

%lum = 79.3%

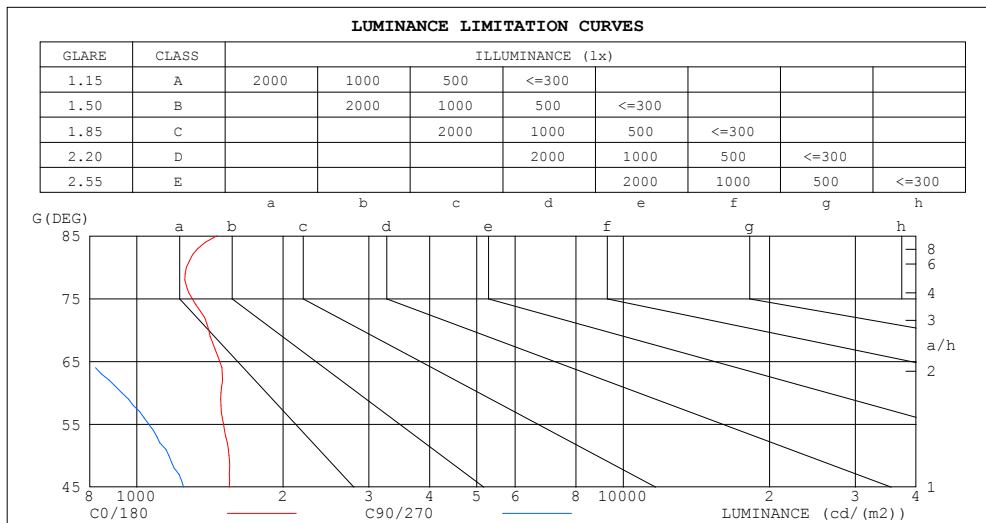
%lamp = 79.3%

C Range: 0 - 360DEG
 C Interval: 30.0DEG
 Test Speed: HIGH
 Temperature:25.3DEG
 Operators:LPC
 Test Date:2021-10-20

γ Range: 0 - 120DEG
 γ Interval: 1.0DEG
 Test System:EVERFINE GO-2000B_V1 SYSTEM V2.0.362
 Humidity:65.0%
 Test Distance:9.200m [K=1.0000]
 Remarks:

LUMINANCE LIMITATION CURVES

Test:U:24.00V I:0.2362A P:5.669W PF:1.000 Freq:50.00Hz Lamp Flux:0.865432x70 lm		
NAME: P01-24V-5050-70-SPI-RGBW(4000K)-B	TYPE:	WEIGHT:
SPEC.:	DIM.:	SERIAL No.:
MFR.: EVERFINE	SUR.:1*0.014	Shielding Angle:



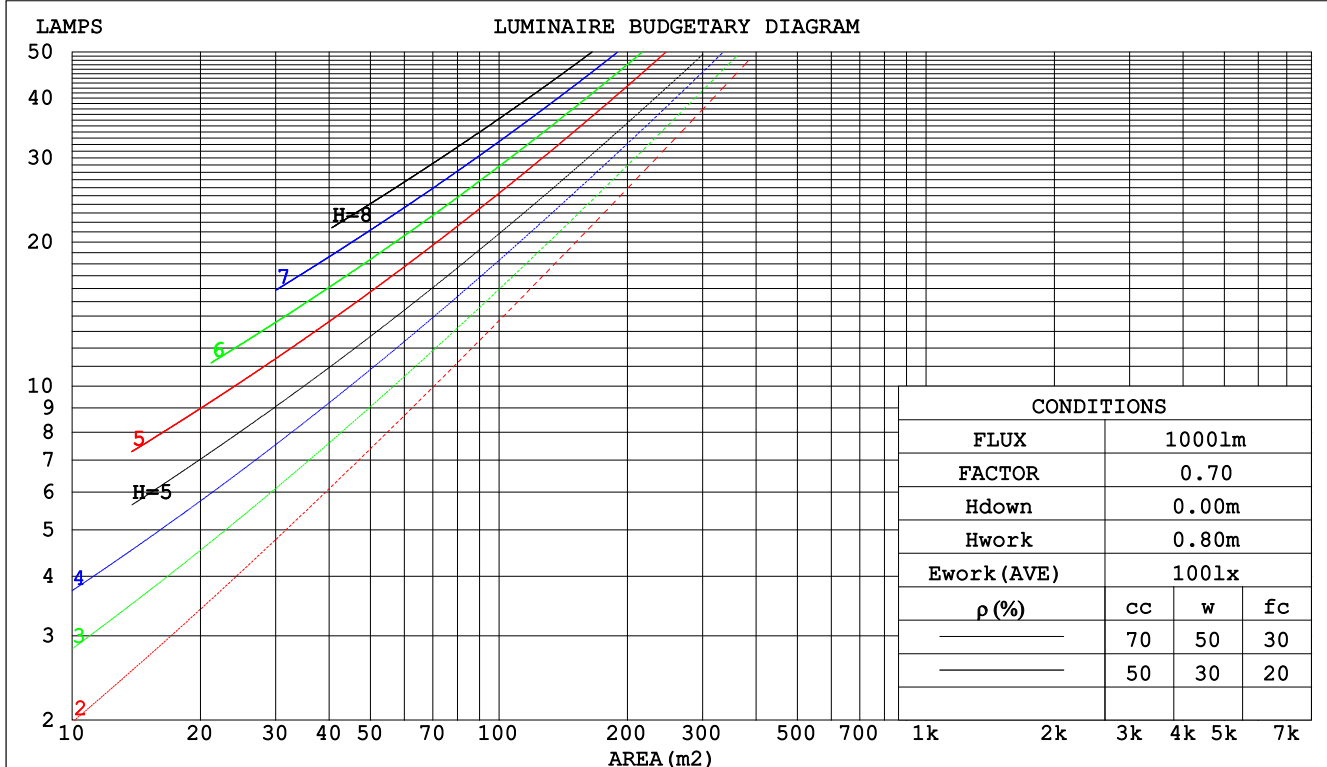
C Range: 0 - 360DEG
C Interval: 30.0DEG
Test Speed: HIGH
Temperature:25.3DEG
Operators:LPC
Test Date:2021-10-20

γ Range: 0 - 120DEG
 γ Interval: 1.0DEG
Test System:EVERFINE GO-2000B_V1 SYSTEM V2.0.362
Humidity:65.0%
Test Distance:9.200m [K=1.0000]
Remarks:

CU AND LUMINAIRE BUDGETARY ESTIMATE DIAGRAM

Test:U:24.00V I:0.2362A P:5.669W PF:1.000 Freq:50.00Hz Lamp Flux:0.865432x70 lm		
NAME: P01-24V-5050-70-SPI-RGBW(4000K)-B	TYPE:	WEIGHT:
SPEC.:	DIM.:	SERIAL No.:
MFR.: EVERFINE	SUR.:1*0.014	Shielding Angle:

pcc	80%			70%			50%			30%			10%			0
pw	50%	30%	10%	50%	30%	10%	50%	30%	10%	50%	30%	10%	50%	30%	10%	0
pfc	20%			20%			20%			20%			20%			0
RCR	RCR:Room Cavity Ratio						Coefficients of Utilization(CU)									
0.0	1.19	1.19	1.19	1.16	1.16	1.16	1.10	1.10	1.10	1.06	1.06	1.06	1.01	1.01	1.01	.99
1.0	1.04	.00	.96	1.02	.98	.94	.97	.94	.91	.93	.90	.88	.89	.87	.85	.83
2.0	.91	.84	.78	.89	.83	.77	.85	.80	.75	.82	.77	.74	.78	.75	.72	.70
3.0	.80	.72	.66	.78	.71	.65	.75	.69	.64	.72	.67	.62	.70	.65	.61	.59
4.0	.71	.62	.56	.70	.62	.55	.67	.60	.54	.64	.58	.53	.62	.57	.53	.50
5.0	.64	.55	.48	.62	.54	.48	.60	.53	.47	.58	.52	.47	.56	.50	.46	.44
6.0	.57	.48	.42	.56	.48	.42	.54	.47	.41	.53	.46	.41	.51	.45	.40	.38
7.0	.52	.43	.37	.51	.43	.37	.49	.42	.37	.48	.41	.36	.47	.41	.36	.34
8.0	.47	.39	.33	.47	.39	.33	.45	.38	.33	.44	.37	.33	.43	.37	.32	.30
9.0	.44	.35	.30	.43	.35	.30	.42	.35	.30	.41	.34	.29	.40	.34	.29	.27
10.0	.40	.32	.27	.40	.32	.27	.39	.32	.27	.38	.31	.27	.37	.31	.27	.25



C Range: 0 - 360DEG
 C Interval: 30.0DEG
 Test Speed: HIGH
 Temperature:25.3DEG
 Operators:LPC
 Test Date:2021-10-20

γ Range: 0 - 120DEG
 γ Interval: 1.0DEG
 Test System:EVERFINE GO-2000B_V1 SYSTEM V2.0.362
 Humidity:65.0%
 Test Distance:9.200m [K=1.0000]
 Remarks:

WEC AND CCEC

Test:U:24.00V I:0.2362A P:5.669W PF:1.000 Freq:50.00Hz Lamp Flux:0.865432x70 lm		
NAME: P01-24V-5050-70-SPI-RGBW(4000K)-B	TYPE:	WEIGHT:
SPEC.:	DIM.:	SERIAL No.:
MFR.: EVERFINE	SUR.:1*0.014	Shielding Angle:

pcc	80%			70%			50%			30%			10%			0	
pw	50%	30%	10%	50%	30%	10%	50%	30%	10%	50%	30%	10%	50%	30%	10%	0	
pfc	20%			20%			20%			20%			20%			0	
RCR	RCR:Room Cavity Ratio						Wall Exitance Coefficients(WEC)										
0.0																	
1.0	.304	.173	.055	.296	.169	.054	.282	.162	.052	.270	.156	.050	.258	.149	.048		
2.0	.285	.156	.048	.279	.154	.047	.266	.148	.046	.255	.143	.045	.245	.138	.044		
3.0	.264	.141	.042	.258	.138	.042	.248	.134	.041	.238	.130	.040	.228	.126	.039		
4.0	.244	.127	.037	.239	.125	.037	.229	.122	.036	.221	.118	.036	.212	.115	.035		
5.0	.226	.115	.033	.222	.114	.033	.213	.111	.033	.205	.108	.032	.198	.106	.032		
6.0	.210	.105	.030	.206	.104	.030	.198	.102	.030	.191	.099	.029	.184	.097	.029		
7.0	.196	.097	.027	.192	.096	.027	.185	.094	.027	.179	.092	.027	.173	.090	.026		
8.0	.183	.089	.025	.180	.089	.025	.174	.087	.025	.168	.085	.025	.162	.083	.024		
9.0	.172	.083	.023	.169	.082	.023	.163	.081	.023	.158	.079	.023	.153	.078	.022		
10.0	.162	.077	.022	.159	.077	.021	.154	.075	.021	.149	.074	.021	.145	.073	.021		

pcc	80%			70%			50%			30%			10%			0
pw	50%	30%	10%	50%	30%	10%	50%	30%	10%	50%	30%	10%	50%	30%	10%	0
pfc	20%			20%			20%			20%			20%			0
RCR	RCR:Room Cavity Ratio			Ceiling Cavity Exitance Coefficients(CCEC)												
0.0	.199	.199	.199	.170	.170	.170	.116	.116	.116	.067	.067	.067	.021	.021	.021	
1.0	.189	.165	.144	.162	.142	.124	.111	.098	.086	.064	.056	.050	.020	.018	.016	
2.0	.180	.141	.108	.155	.121	.093	.106	.084	.065	.061	.049	.038	.020	.016	.012	
3.0	.172	.123	.084	.148	.106	.073	.102	.074	.051	.059	.043	.030	.019	.014	.010	
4.0	.165	.110	.068	.141	.095	.059	.097	.066	.042	.056	.039	.025	.018	.013	.008	
5.0	.157	.100	.057	.135	.086	.050	.093	.060	.035	.054	.035	.021	.017	.012	.007	
6.0	.150	.091	.049	.129	.079	.043	.089	.055	.030	.052	.033	.018	.017	.011	.006	
7.0	.143	.084	.043	.123	.073	.037	.085	.051	.026	.050	.030	.016	.016	.010	.005	
8.0	.137	.079	.038	.118	.068	.033	.082	.048	.024	.048	.028	.014	.015	.009	.005	
9.0	.131	.074	.035	.113	.064	.030	.078	.045	.022	.046	.027	.013	.015	.009	.004	
10.0	.125	.069	.032	.108	.060	.028	.075	.042	.020	.044	.025	.012	.014	.008	.004	

C Range: 0 - 360DEG
C Interval: 30.0DEG
Test Speed: HIGH
Temperature:25.3DEG
Operators:LPC
Test Date:2021-10-20

γ Range: 0 - 120DEG
γ Interval: 1.0DEG
Test System:EVERFINE GO-2000B_V1 SYSTEM V2.0.362
Humidity:65.0%
Test Distance:9.200m [K=1.0000]
Remarks:

UGR(Unified Glare Rating) Table

Test:U:24.00V I:0.2362A P:5.669W PF:1.000 Freq:50.00Hz Lamp Flux:0.865432x70 lm											
NAME: P01-24V-5050-70-SPI-RGBW(4000K)-B					TYPE:			WEIGHT:			
SPEC.:					DIM.:			SERIAL No.:			
MFR.: EVERFINE					SUR.:1*0.014			Shielding Angle:			
ceiling/cavity	0.7	0.7	0.5	0.5	0.3	0.7	0.7	0.5	0.5	0.3	
walls	0.5	0.3	0.5	0.3	0.3	0.5	0.3	0.5	0.3	0.3	
working plane	0.2	0.2	0.2	0.2	0.2	0.2	0.2	0.2	0.2	0.2	
Room dimensions		Viewed crosswise				Viewed endwise					
x = 2H y = 2H	24.1	25.6	24.4	25.8	26.1	22.7	24.2	23.0	24.4	24.6	
	3H	25.8	27.2	26.1	27.4	27.7	23.7	25.0	24.0	25.3	25.5
	4H	26.5	27.8	26.8	28.0	28.3	23.9	25.2	24.3	25.5	25.8
	6H	27.0	28.2	27.3	28.5	28.8	24.0	25.2	24.4	25.5	25.8
	8H	27.2	28.4	27.6	28.7	29.0	24.0	25.2	24.4	25.5	25.8
	12H	27.4	28.5	27.8	28.8	29.2	24.0	25.1	24.4	25.4	25.8
4H	2H	24.6	25.9	25.0	26.2	26.5	23.5	24.8	23.9	25.1	25.4
	3H	26.5	27.6	26.9	27.9	28.3	24.8	25.9	25.1	26.2	26.5
	4H	27.3	28.3	27.7	28.7	29.0	25.2	26.2	25.6	26.5	26.9
	6H	28.0	28.9	28.4	29.3	29.6	25.4	26.3	25.8	26.7	27.1
	8H	28.2	29.1	28.7	29.5	29.9	25.4	26.3	25.8	26.7	27.1
	12H	28.5	29.3	29.0	29.7	30.1	25.4	26.2	25.9	26.6	27.0
8H	4H	27.5	28.4	27.9	28.7	29.1	25.6	26.5	26.1	26.9	27.3
	6H	28.3	29.0	28.8	29.5	29.9	26.0	26.8	26.5	27.2	27.6
	8H	28.7	29.3	29.2	29.8	30.3	26.2	26.8	26.6	27.2	27.7
	12H	29.1	29.6	29.6	30.1	30.6	26.2	26.8	26.7	27.2	27.7
12H	4H	27.5	28.3	27.9	28.7	29.1	25.7	26.5	26.1	26.9	27.3
	6H	28.4	29.0	28.8	29.4	29.9	26.2	26.8	26.7	27.3	27.7
	8H	28.8	29.3	29.3	29.8	30.3	26.4	26.9	26.9	27.4	27.9
Variations with the observer position at spacings:											
S = 1.0H	+ 0.1 / - 0.2					+ 0.2 / - 0.3					
1.5H	+ 0.2 / - 0.3					+ 0.3 / - 0.5					
2.0H	+ 0.2 / - 0.3					+ 0.3 / - 0.8					

CIE Pub.117, 60.58 lm Total Lamp Luminous Flux Correct (8log(F/F0) = -9.7)

C Range: 0 - 360DEG
C Interval: 30.0DEG
Test Speed: HIGH
Temperature:25.3DEG
Operators:LPC
Test Date:2021-10-20

γ Range: 0 - 120DEG
γ Interval: 1.0DEG
Test System:EVERFINE GO-2000B_V1 SYSTEM V2.0.362
Humidity:65.0%
Test Distance:9.200m [K=1.0000]
Remarks:

UTILIZATION FACTORS TABLE

Test:U:24.00V I:0.2362A P:5.669W PF:1.000 Freq:50.00Hz Lamp Flux:0.865432x70 lm		
NAME: P01-24V-5050-70-SPI-RGBW(4000K)-B	TYPE:	WEIGHT:
SPEC.:	DIM.:	SERIAL No.:
MFR.: EVERFINE	SUR.:1*0.014	Shielding Angle:

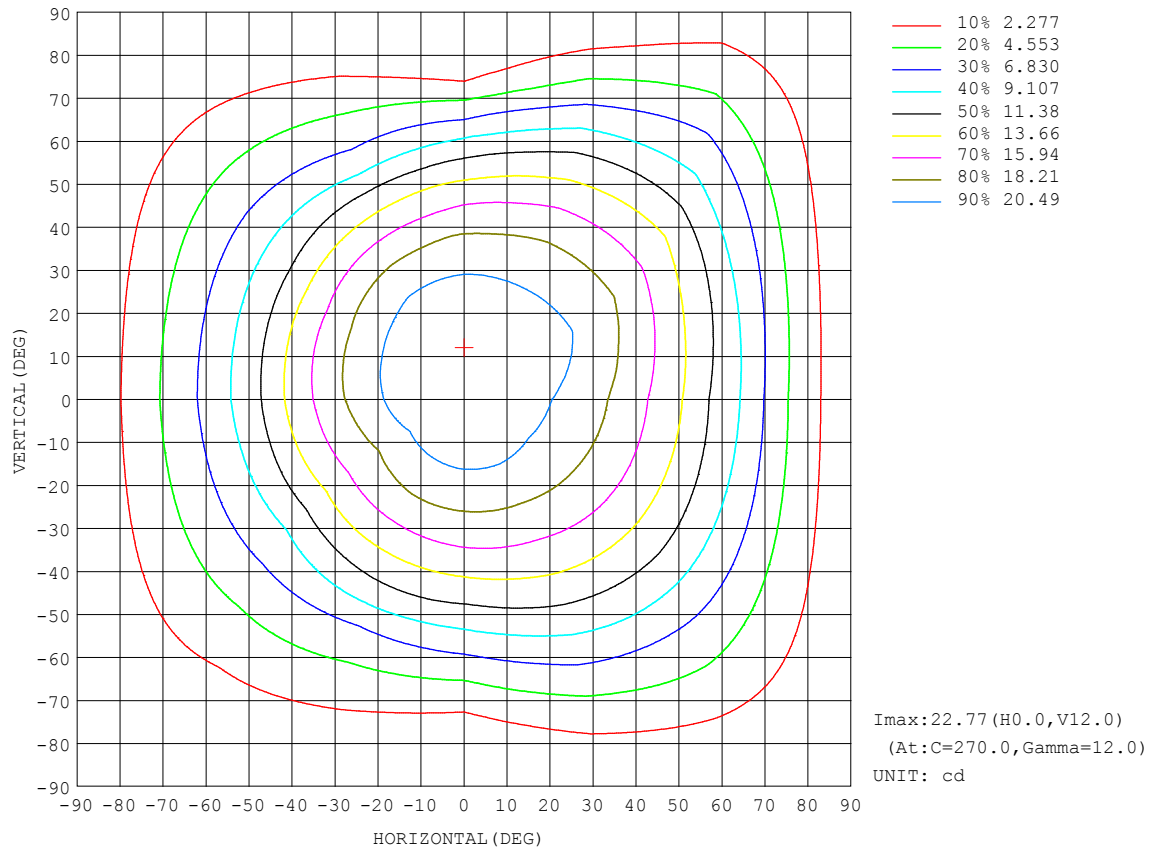
REFLECTANCE										
Ceiling	0.8	0.8	0.8	0.7	0.7	0.7	0.5	0.5	0.5	0
Walls	0.7	0.5	0.3	0.7	0.5	0.3	0.7	0.5	0.3	0
Working plane	0.2	0.2	0.2	0.2	0.2	0.2	0.2	0.2	0.2	0
ROOM INDEX	UTILIZATION FACTORS (PERCENT) $k(RI) \times RCR = 5$									
$k = 0.60$	58	47	40	58	47	40	56	46	40	33
0.80	68	57	50	67	56	49	65	56	49	42
1.00	77	66	59	75	65	58	73	66	58	51
1.25	84	73	66	82	73	66	79	71	65	58
1.50	89	79	72	87	78	71	84	76	70	63
2.00	95	87	80	93	86	80	90	83	78	70
2.50	99	91	85	97	90	84	93	87	82	74
3.00	102	95	90	100	94	89	96	91	87	78
4.00	106	101	96	104	99	94	99	95	92	83
5.00	109	104	100	106	102	98	101	98	95	85
ROOM INDEX	UF (total)									Direct
According to DIN EN 13032-2 2004			Suspended					SHRNOM = 1.25		

C Range: 0 - 360DEG
 C Interval: 30.0DEG
 Test Speed: HIGH
 Temperature:25.3DEG
 Operators:LPC
 Test Date:2021-10-20

γ Range: 0 - 120DEG
 γ Interval: 1.0DEG
 Test System:EVERFINE GO-2000B_V1 SYSTEM V2.0.362
 Humidity:65.0%
 Test Distance:9.200m [K=1.0000]
 Remarks:

ISOCANDELA DIAGRAM

Test:U:24.00V I:0.2362A P:5.669W PF:1.000 Freq:50.00Hz Lamp Flux:0.865432x70 lm		
NAME: P01-24V-5050-70-SPI-RGBW(4000K)-B	TYPE:	WEIGHT:
SPEC.:	DIM.:	SERIAL No.:
MFR.: EVERFINE	SUR.:1*0.014	Shielding Angle:

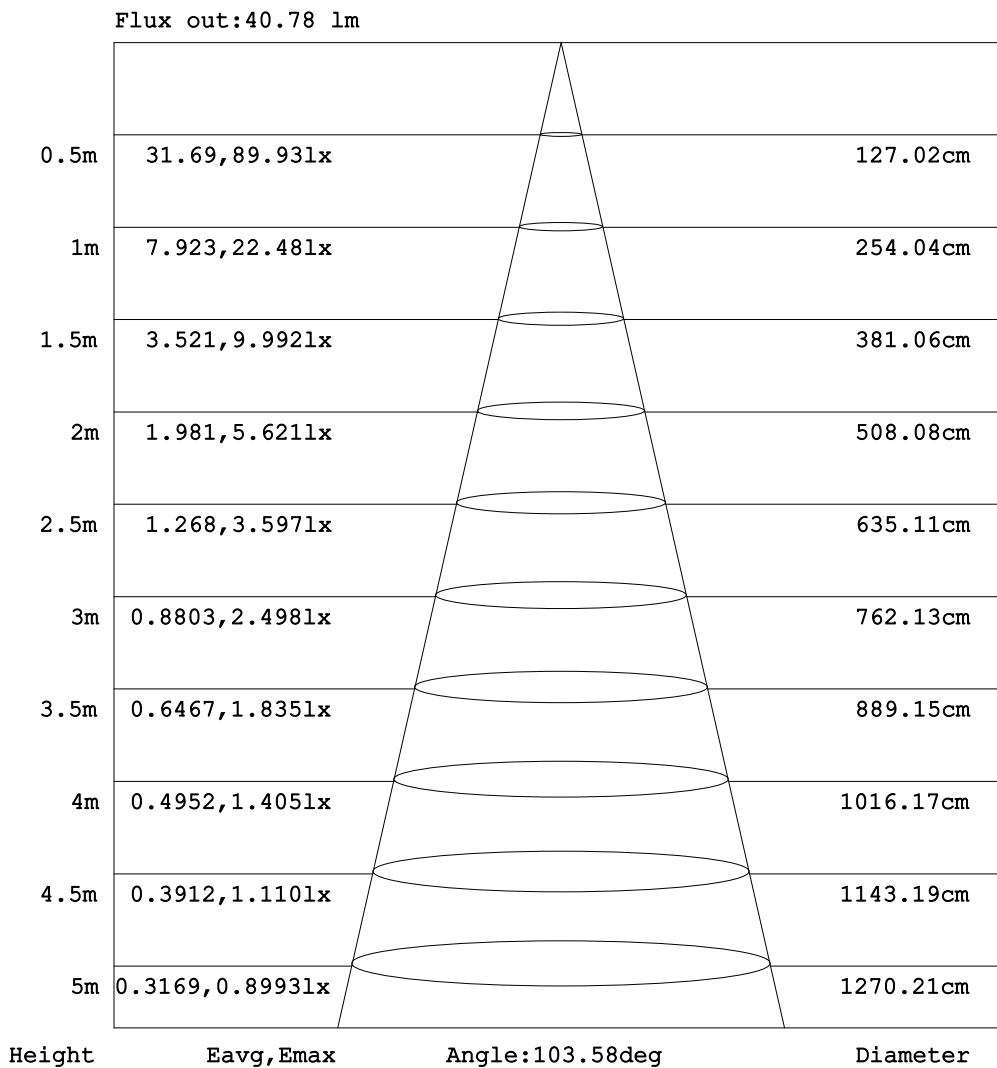


C Range: 0 - 360DEG
C Interval: 30.0DEG
Test Speed: HIGH
Temperature:25.3DEG
Operators:LPC
Test Date:2021-10-20

γ Range: 0 - 120DEG
γ Interval: 1.0DEG
Test System:EVERFINE GO-2000B_V1 SYSTEM V2.0.362
Humidity:65.0%
Test Distance:9.200m [K=1.0000]
Remarks:

AAI Figure

Test:U:24.00V I:0.2362A P:5.669W PF:1.000 Freq:50.00Hz Lamp Flux:0.865432x70 lm		
NAME: P01-24V-5050-70-SPI-RGBW(4000K)-B	TYPE:	WEIGHT:
SPEC.:	DIM.:	SERIAL No.:
MFR.: EVERFINE	SUR.:1*0.014	Shielding Angle:



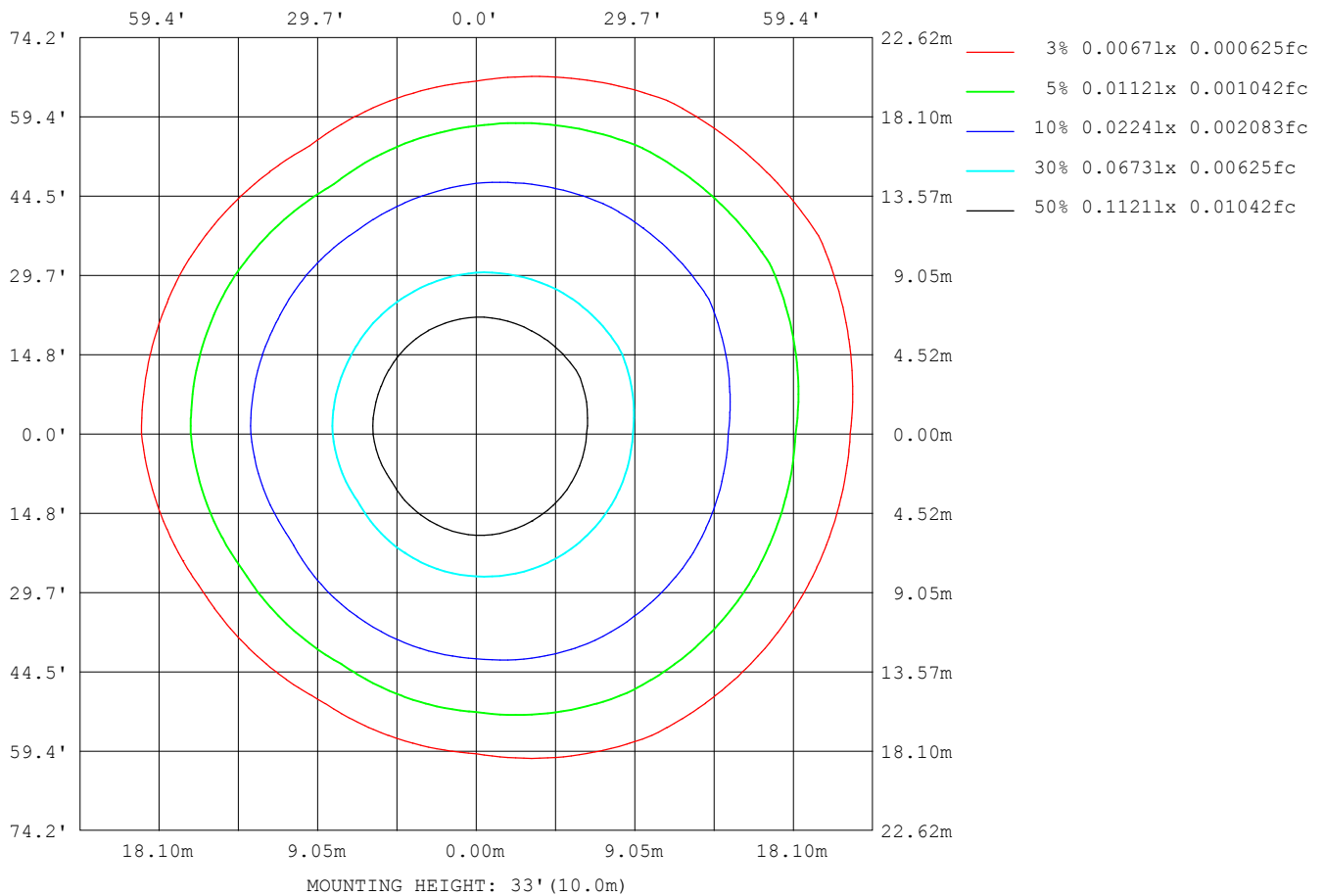
Note:The Curves indicate the illuminated area and the average illumination when the luminaire is at different distance.

C Range: 0 - 360DEG
C Interval: 30.0DEG
Test Speed: HIGH
Temperature:25.3DEG
Operators:LPC
Test Date:2021-10-20

γ Range: 0 - 120DEG
γ Interval: 1.0DEG
Test System:EVERFINE GO-2000B_V1 SYSTEM V2.0.362
Humidity:65.0%
Test Distance:9.200m [K=1.0000]
Remarks:

ISOLUX DIAGRAM

Test:U:24.00V I:0.2362A P:5.669W PF:1.000 Freq:50.00Hz Lamp Flux:0.865432x70 lm		
NAME: P01-24V-5050-70-SPI-RGBW(4000K)-B	TYPE:	WEIGHT:
SPEC.:	DIM.:	SERIAL No.:
MFR.: EVERFINE	SUR.:1*0.014	Shielding Angle:



C Range: 0 - 360DEG
C Interval: 30.0DEG
Test Speed: HIGH
Temperature:25.3DEG
Operators:LPC
Test Date:2021-10-20

γ Range: 0 - 120DEG
γ Interval: 1.0DEG
Test System:EVERFINE GO-2000B_V1 SYSTEM V2.0.362
Humidity:65.0%
Test Distance:9.200m [K=1.0000]
Remarks:

LED Avg.L Report

Test:U:24.00V I:0.2362A P:5.669W PF:1.000 Freq:50.00Hz Lamp Flux:0.865432x70 lm		
NAME: P01-24V-5050-70-SPI-RGBW(4000K)-B	TYPE:	WEIGHT:
SPEC.:	DIM.:	SERIAL No.:
MFR.: EVERFINE	SUR.:1*0.014	Shielding Angle:

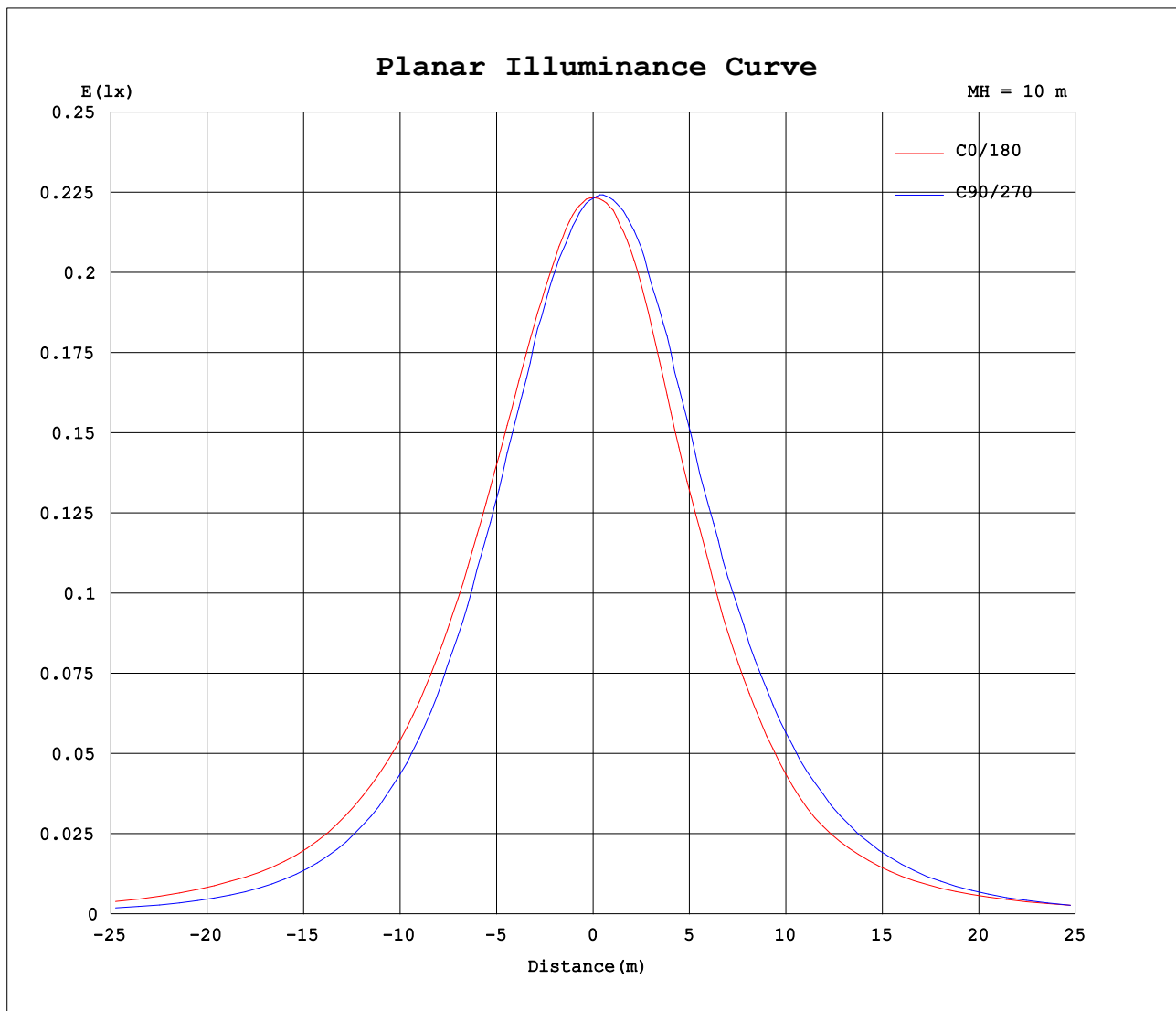
AvgL	cd/m2
L_0~180 (65) av	1252
L_0~180 (75) av	1131
L_0~180 (85) av	1201
L_90~270 (65) av	973
L_90~270 (75) av	499
L_90~270 (85) av	136
L_45 (65) av	1194
L_45 (75) av	1084
L_45 (85) av	1015

Standard: GB/T 29293-2012

C Range: 0 - 360DEG
C Interval: 30.0DEG
Test Speed: HIGH
Temperature:25.3DEG
Operators:LPC
Test Date:2021-10-20

γ Range: 0 - 120DEG
γ Interval: 1.0DEG
Test System:EVERFINE GO-2000B_V1 SYSTEM V2.0.362
Humidity:65.0%
Test Distance:9.200m [K=1.0000]
Remarks:

Planar Illuminance Curve



C Range: 0 - 360DEG
C Interval: 30.0DEG
Test Speed: HIGH
Temperature: 25.3DEG
Operators: LPC
Test Date: 2021-10-20

γ Range: 0 - 120DEG
 γ Interval: 1.0DEG
Test System: EVERFINE GO-2000B_V1 SYSTEM V2.0.362
Humidity: 65.0%
Test Distance: 9.200m [K=1.0000]
Remarks:

LUMINOUS DISTRIBUTION INTENSITY DATA

Test:U:24.00V I:0.2362A P:5.669W PF:1.000 Freq:50.00Hz Lamp Flux:0.865432x70 lm		
NAME: P01-24V-5050-70-SPI-RGBW(4000K)-B	TYPE:	WEIGHT:
SPEC.:	DIM.:	SERIAL No.:
MFR.: EVERFINE	SUR.:1*0.014	Shielding Angle:

Table--1

UNIT: cd

C (DEG) γ (DEG)	0	30	60	90	120	150	180	210	240	270	300	330						
0	22.3	22.3	22.4	22.3	22.4	22.4	22.3	22.3	22.4	22.3	22.4	22.4						
5	22.2	22.1	22.0	21.9	22.0	22.0	22.3	22.5	22.6	22.6	22.6	22.5						
10	21.8	21.6	21.4	21.4	21.4	21.4	22.0	22.3	22.6	22.7	22.7	22.5						
15	21.2	20.8	20.8	20.6	20.6	20.4	21.3	21.8	22.3	22.7	22.6	22.2						
20	20.6	20.1	19.9	19.6	19.6	19.1	20.2	20.9	21.8	22.2	22.0	21.7						
25	19.8	19.2	18.7	18.5	18.2	17.7	18.8	19.6	20.9	21.4	21.1	21.2						
30	19.0	18.3	17.6	17.3	16.7	16.5	17.7	18.4	19.7	20.3	20.3	20.4						
35	17.9	17.2	16.3	15.8	15.1	14.7	16.0	16.9	18.2	19.1	19.3	19.5						
40	16.7	15.9	15.0	14.1	13.4	12.9	14.3	15.0	16.4	17.7	18.4	18.5						
45	15.3	14.5	13.6	12.3	11.6	10.8	12.3	13.0	14.4	16.0	17.0	17.3						
50	13.9	13.0	12.0	10.5	9.73	8.97	10.3	10.9	12.3	14.1	15.5	15.9						
55	12.1	11.5	10.3	8.49	7.44	7.55	8.87	9.23	9.67	11.9	13.7	14.3						
60	10.4	9.75	8.60	6.52	5.70	6.12	7.38	7.58	7.38	9.39	11.8	12.7						
65	8.77	7.85	6.83	4.69	4.44	4.80	6.04	6.07	5.85	6.82	9.63	10.6						
70	6.74	6.22	5.11	3.06	3.26	3.54	4.74	4.61	4.31	4.26	7.39	8.72						
75	4.71	4.54	3.50	1.74	2.15	2.36	3.49	3.23	2.81	1.88	5.16	6.80						
80	3.07	2.81	2.12	0.78	1.24	1.31	2.22	1.92	1.54	0.60	3.17	4.64						
85	1.78	1.52	1.06	0.24	0.58	0.59	1.15	0.87	0.58	0.10	1.53	2.80						
90	0.82	0.68	0.44	0.18	0.34	0.29	0.37	0.28	0.15	0.04	0.46	1.32						
95	0.31	0.28	0.30	0.19	0.32	0.30	0.13	0.16	0.15	0.04	0.14	0.49						
100	0.19	0.26	0.29	0.21	0.32	0.31	0.14	0.16	0.15	0.04	0.14	0.16						
105	0.19	0.27	0.26	0.24	0.29	0.31	0.15	0.16	0.16	0.05	0.14	0.15						
110	0.19	0.28	0.27	0.24	0.29	0.31	0.15	0.16	0.19	0.06	0.14	0.15						
115	0.19	0.29	0.28	0.25	0.30	0.31	0.15	0.16	0.19	0.07	0.13	0.15						
120	0.20	0.29	0.28	0.26	0.31	0.31	0.15	0.19	0.19	0.13	0.13	0.15						
125	0.00	0.00	0.00	0.00	0.00	0.00	0.00	0.00	0.00	0.00	0.00	0.00						
130	0.00	0.00	0.00	0.00	0.00	0.00	0.00	0.00	0.00	0.00	0.00	0.00						
135	0.00	0.00	0.00	0.00	0.00	0.00	0.00	0.00	0.00	0.00	0.00	0.00						
140	0.00	0.00	0.00	0.00	0.00	0.00	0.00	0.00	0.00	0.00	0.00	0.00						
145	0.00	0.00	0.00	0.00	0.00	0.00	0.00	0.00	0.00	0.00	0.00	0.00						
150	0.00	0.00	0.00	0.00	0.00	0.00	0.00	0.00	0.00	0.00	0.00	0.00						
155	0.00	0.00	0.00	0.00	0.00	0.00	0.00	0.00	0.00	0.00	0.00	0.00						
160	0.00	0.00	0.00	0.00	0.00	0.00	0.00	0.00	0.00	0.00	0.00	0.00						
165	0.00	0.00	0.00	0.00	0.00	0.00	0.00	0.00	0.00	0.00	0.00	0.00						
170	0.00	0.00	0.00	0.00	0.00	0.00	0.00	0.00	0.00	0.00	0.00	0.00						
175	0.00	0.00	0.00	0.00	0.00	0.00	0.00	0.00	0.00	0.00	0.00	0.00						
180	0.00	0.00	0.00	0.00	0.00	0.00	0.00	0.00	0.00	0.00	0.00	0.00						

C Range: 0 - 360DEG
C Interval: 30.0DEG
Test Speed: HIGH
Temperature:25.3DEG
Operators:LPC
Test Date:2021-10-20

γ Range: 0 - 120DEG
γ Interval: 1.0DEG
Test System:EVERFINE GO-2000B_V1 SYSTEM V2.0.362
Humidity:65.0%
Test Distance:9.200m [K=1.0000]
Remarks: