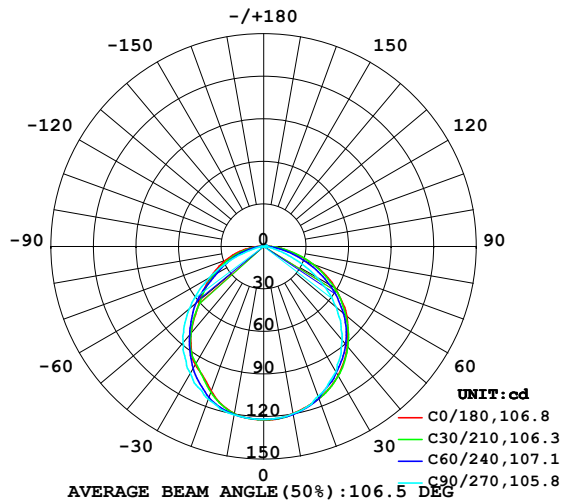


## LUMINAIRE PHOTOMETRIC TEST REPORT

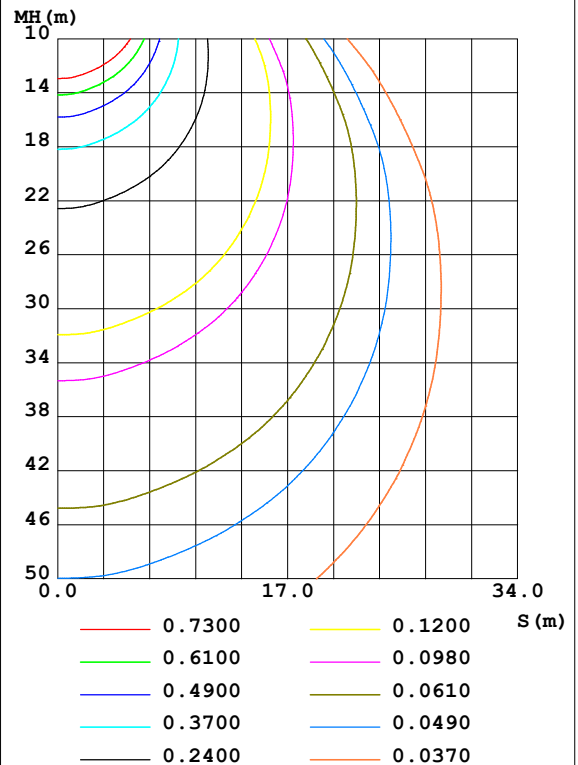
Test:U:24.00V I:0.2365A P:5.676W PF:1.000 Freq:50.00Hz Lamp Flux:4.78349x70 lm		
NAME: P01-24V-5050-70-SPI-RGBW(3000K)-G	TYPE:	WEIGHT:
SPEC.:	DIM.:	SERIAL No.:
MFR.: EVERFINE	SUR.:1*0.014	Shielding Angle:

DATA OF LAMP		PHOTOMETRIC DATA Eff: 58.99 lm/W			
MODEL	5050	I <sub>max</sub> (cd)	122.3	S/MH (C0/180)	1.18
NOMINAL POWER (W)	12	LOR (%)	100.0	S/MH (C90/270)	1.27
RATED VOLTAGE (V)	24	TOTAL FLUX (lm)	334.84	η UP, DN (C0-180)	0.9, 49.0
NOMINAL FLUX (lm)	4.78349	CIE CLASS	DIRECT	η UP, DN (C180-360)	0.6, 49.5
LAMPS INSIDE	70	η up (%)	1.5	CIBSE SHR NOM	1.25
TEST VOLTAGE (V)	24	η down (%)	98.5	CIBSE SHR MAX	1.35

LUMINOUS INTENSITY DISTRIBUTION DIAGRAM



C0 PLANE ISOLUX DIAGRAM (UNIT: lx)



C Range: 0 - 360DEG  
 C Interval: 30.0DEG  
 Test Speed: HIGH  
 Temperature: 25.3DEG  
 Operators: LPC  
 Test Date: 2021-10-20

γ Range: 0 - 120DEG  
 γ Interval: 1.0DEG  
 Test System: EVERFINE GO-2000B\_V1 SYSTEM V2.0.362  
 Humidity: 65.0%  
 Test Distance: 9.200m [K=1.0000]  
 Remarks:

## ZONAL FLUX DIAGRAM

## ZONAL FLUX DIAGRAM:

$\gamma$	C0	C45	C90	C135	C180	C225	C270	C315	$\gamma$	$\Phi$ zone	$\Phi$ total	%lum, lamp
10	119.5	120.2	119.7	118.4	119.7	120.0	120.6	121.2	0- 10	11.56	11.56	3.45,3.45
20	114.2	114.1	112.6	108.3	108.5	111.3	114.6	115.9	10- 20	32.95	44.51	13.3,13.3
30	105.0	104.0	102.0	95.08	96.47	97.56	103.6	107.3	20- 30	49.31	93.82	28,28
40	91.84	91.15	86.15	77.06	79.85	80.67	88.51	95.90	30- 40	58.98	152.8	45.6,45.6
50	76.60	74.46	66.85	57.08	58.81	60.04	68.32	79.80	40- 50	59.55	212.4	63.4,63.4
60	58.18	55.43	42.81	37.07	42.98	39.45	44.07	60.74	50- 60	51.72	264.1	78.9,78.9
70	37.35	34.45	18.51	22.00	28.67	23.72	18.97	39.19	60- 70	37.69	301.8	90.1,90.1
80	17.51	15.20	4.394	8.719	14.27	9.720	3.244	18.70	70- 80	20.93	322.7	96.4,96.4
90	4.687	3.575	1.106	2.030	2.959	1.723	0.5528	4.478	80- 90	7.153	329.8	98.5,98.5
100	1.377	1.679	1.322	1.865	1.035	1.261	0.7733	1.247	90-100	1.882	331.7	99.1,99.1
110	1.457	1.769	1.503	1.950	1.211	1.410	0.9197	1.287	100-110	1.496	333.2	99.5,99.5
120	1.618	1.779	1.638	2.063	1.347	1.543	1.111	1.241	110-120	1.547	334.8	100,100
130	0	0	0	0	0	0	0	0	120-130	0.0747	334.8	100,100
140	0	0	0	0	0	0	0	0	130-140	0	334.8	100,100
150	0	0	0	0	0	0	0	0	140-150	0	334.8	100,100
160	0	0	0	0	0	0	0	0	150-160	0	334.8	100,100
170	0	0	0	0	0	0	0	0	160-170	0	334.8	100,100
180	0	0	0	0	0	0	0	0	170-180	0	334.8	100,100
DEG	LUMINOUS INTENSITY:cd									UNIT:lm		

Conical surface Flux(90deg): 183.09 lm

%lum = 54.7%

%lamp = 54.7%

Conical surface Flux(120deg): 264.07 lm

%lum = 78.9%

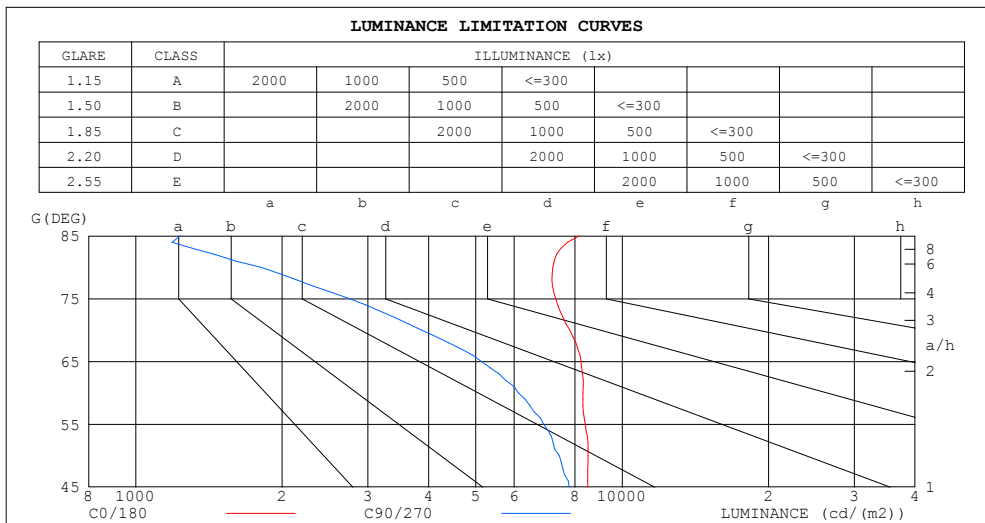
%lamp = 78.9%

C Range: 0 - 360DEG  
 C Interval: 30.0DEG  
 Test Speed: HIGH  
 Temperature:25.3DEG  
 Operators:LPC  
 Test Date:2021-10-20

$\gamma$  Range: 0 - 120DEG  
 $\gamma$  Interval: 1.0DEG  
 Test System:EVERFINE GO-2000B\_V1 SYSTEM V2.0.362  
 Humidity:65.0%  
 Test Distance:9.200m [K=1.0000]  
 Remarks:

## LUMINANCE LIMITATION CURVES

Test:U:24.00V I:0.2365A P:5.676W PF:1.000 Freq:50.00Hz Lamp Flux:4.78349x70 lm		
NAME: P01-24V-5050-70-SPI-RGBW(3000K)-G	TYPE:	WEIGHT:
SPEC.:	DIM.:	SERIAL No.:
MFR.: EVERFINE	SUR.:1*0.014	Shielding Angle:



LUMINANCE cd/(m2)		
G (DEG)	C0/180	C90/270
85	8160	1234
80	7201	1808
75	7298	2749
70	7801	3865
65	8230	5131
60	8311	6115
55	8390	6888
50	8512	7428
45	8495	7786

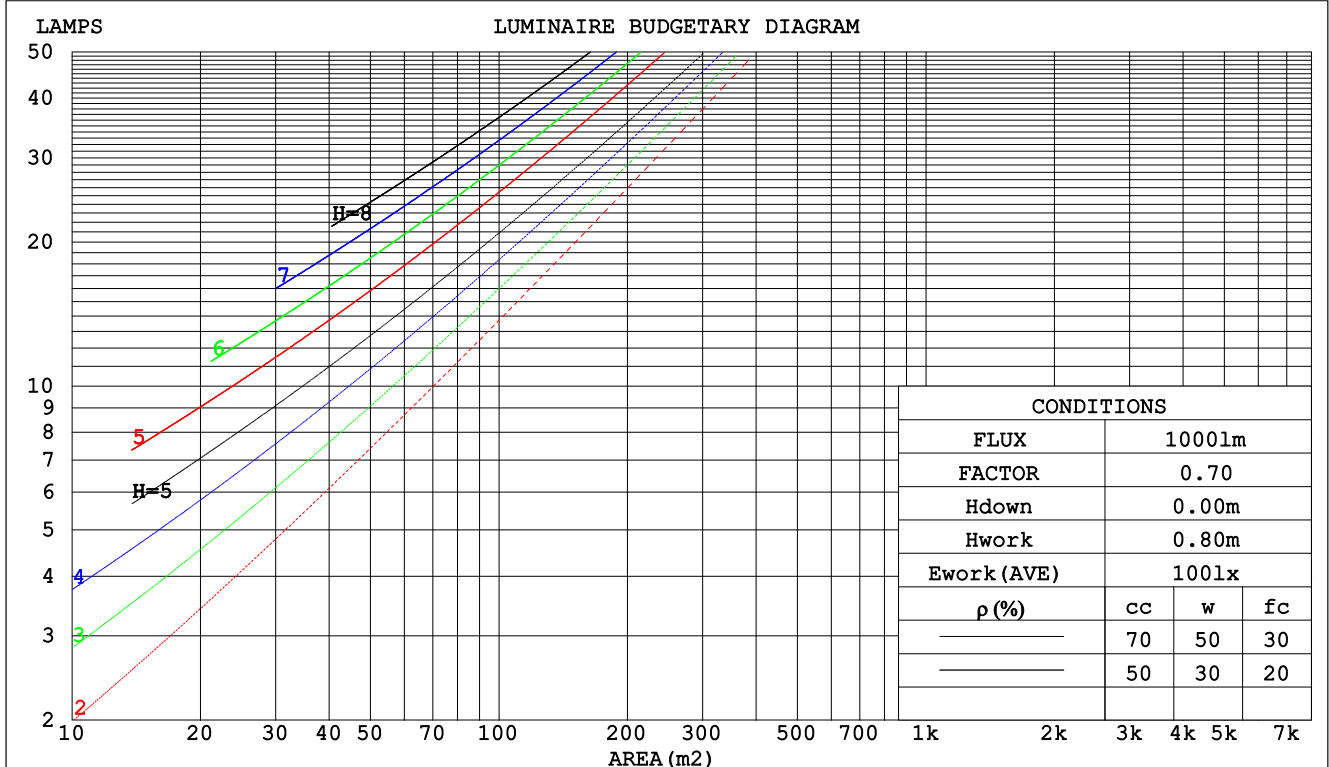
C Range: 0 - 360DEG  
C Interval: 30.0DEG  
Test Speed: HIGH  
Temperature:25.3DEG  
Operators:LPC  
Test Date:2021-10-20

γ Range: 0 - 120DEG  
γ Interval: 1.0DEG  
Test System:EVERFINE GO-2000B\_V1 SYSTEM V2.0.362  
Humidity:65.0%  
Test Distance:9.200m [K=1.0000]  
Remarks:

CU AND LUMINAIRE BUDGETARY ESTIMATE DIAGRAM

Test:U:24.00V I:0.2365A P:5.676W PF:1.000 Freq:50.00Hz Lamp Flux:4.78349x70 lm		
NAME: P01-24V-5050-70-SPI-RGBW(3000K)-G	TYPE:	WEIGHT:
SPEC.:	DIM.:	SERIAL No.:
MFR.: EVERFINE	SUR.:1*0.014	Shielding Angle:

pcc	80%			70%			50%			30%			10%			0
pw	50%	30%	10%	50%	30%	10%	50%	30%	10%	50%	30%	10%	50%	30%	10%	0
pfc	20%			20%			20%			20%			20%			0
RCR	RCR:Room Cavity Ratio			Coefficients of Utilization(CU)												
0.0	1.19	1.19	1.19	1.16	1.16	1.16	1.10	1.10	1.10	1.05	1.05	1.05	1.01	1.01	1.01	.99
1.0	1.04	.00	.96	1.01	.97	.94	.97	.94	.91	.93	.90	.88	.89	.87	.85	.83
2.0	.91	.84	.78	.89	.82	.77	.85	.80	.75	.81	.77	.73	.78	.75	.71	.69
3.0	.80	.72	.65	.78	.71	.65	.75	.69	.63	.72	.67	.62	.69	.65	.61	.58
4.0	.71	.62	.55	.69	.61	.55	.67	.60	.54	.64	.58	.53	.62	.57	.52	.50
5.0	.63	.54	.48	.62	.54	.48	.60	.52	.47	.58	.51	.46	.56	.50	.46	.43
6.0	.57	.48	.42	.56	.48	.42	.54	.47	.41	.52	.46	.41	.51	.45	.40	.38
7.0	.52	.43	.37	.51	.43	.37	.49	.42	.36	.48	.41	.36	.46	.40	.36	.34
8.0	.47	.39	.33	.47	.38	.33	.45	.38	.33	.44	.37	.32	.42	.36	.32	.30
9.0	.43	.35	.30	.43	.35	.30	.42	.34	.29	.40	.34	.29	.39	.33	.29	.27
10.0	.40	.32	.27	.40	.32	.27	.38	.31	.27	.37	.31	.27	.36	.31	.26	.25



C Range: 0 - 360DEG  
 C Interval: 30.0DEG  
 Test Speed: HIGH  
 Temperature:25.3DEG  
 Operators:LPC  
 Test Date:2021-10-20

γ Range: 0 - 120DEG  
 γ Interval: 1.0DEG  
 Test System:EVERFINE GO-2000B\_V1 SYSTEM V2.0.362  
 Humidity:65.0%  
 Test Distance:9.200m [K=1.0000]  
 Remarks:

### WEC AND CCEC

Test:U:24.00V I:0.2365A P:5.676W PF:1.000 Freq:50.00Hz Lamp Flux:4.78349x70 lm		
NAME: P01-24V-5050-70-SPI-RGBW(3000K)-G	TYPE:	WEIGHT:
SPEC.:	DIM.:	SERIAL No.:
MFR.: EVERFINE	SUR.:1*0.014	Shielding Angle:

pcc	80%			70%			50%			30%			10%			0	
pw	50%	30%	10%	50%	30%	10%	50%	30%	10%	50%	30%	10%	50%	30%	10%	0	
pfc	20%			20%			20%			20%			20%			0	
RCR	RCR:Room Cavity Ratio						Wall Exitance Coefficients(WEC)										
0.0																	
1.0	.305	.174	.055	.298	.170	.054	.284	.163	.052	.271	.156	.050	.259	.150	.048		
2.0	.286	.157	.048	.280	.154	.047	.267	.149	.046	.256	.144	.045	.245	.139	.044		
3.0	.265	.141	.042	.259	.139	.042	.248	.134	.041	.238	.130	.040	.228	.127	.039		
4.0	.245	.127	.037	.240	.125	.037	.230	.122	.036	.221	.119	.036	.212	.115	.035		
5.0	.227	.116	.033	.222	.114	.033	.213	.111	.033	.205	.108	.032	.198	.106	.032		
6.0	.210	.106	.030	.206	.104	.030	.199	.102	.030	.191	.099	.029	.184	.097	.029		
7.0	.196	.097	.027	.192	.096	.027	.185	.094	.027	.179	.092	.027	.173	.090	.026		
8.0	.183	.090	.025	.180	.089	.025	.174	.087	.025	.168	.085	.025	.162	.083	.024		
9.0	.172	.083	.023	.169	.082	.023	.163	.081	.023	.158	.079	.023	.153	.078	.022		
10.0	.162	.078	.022	.159	.077	.021	.154	.075	.021	.149	.074	.021	.145	.073	.021		

pcc	80%			70%			50%			30%			10%			0
pw	50%	30%	10%	50%	30%	10%	50%	30%	10%	50%	30%	10%	50%	30%	10%	0
pfc	20%			20%			20%			20%			20%			0
RCR	RCR:Room Cavity Ratio						Ceiling Cavity Exitance Coefficients(CCEC)									
0.0	.202	.202	.202	.173	.173	.173	.118	.118	.118	.068	.068	.068	.022	.022	.022	
1.0	.191	.168	.146	.164	.144	.126	.112	.099	.087	.064	.057	.051	.021	.018	.016	
2.0	.183	.143	.110	.157	.124	.095	.107	.085	.066	.062	.050	.039	.020	.016	.013	
3.0	.175	.126	.087	.150	.109	.075	.103	.075	.053	.060	.044	.031	.019	.014	.010	
4.0	.167	.113	.071	.144	.097	.061	.099	.068	.043	.057	.040	.026	.018	.013	.008	
5.0	.160	.102	.059	.137	.088	.052	.095	.062	.036	.055	.036	.022	.018	.012	.007	
6.0	.153	.094	.051	.131	.081	.045	.091	.057	.032	.053	.033	.019	.017	.011	.006	
7.0	.146	.087	.045	.126	.075	.040	.087	.053	.028	.050	.031	.017	.016	.010	.006	
8.0	.140	.081	.041	.120	.070	.036	.083	.049	.025	.048	.029	.015	.016	.010	.005	
9.0	.134	.076	.037	.115	.066	.032	.080	.046	.023	.047	.027	.014	.015	.009	.005	
10.0	.128	.072	.034	.110	.062	.030	.077	.044	.021	.045	.026	.013	.014	.009	.004	

C Range: 0 - 360DEG  
C Interval: 30.0DEG  
Test Speed: HIGH  
Temperature:25.3DEG  
Operators:LPC  
Test Date:2021-10-20

γ Range: 0 - 120DEG  
γ Interval: 1.0DEG  
Test System:EVERFINE GO-2000B\_V1 SYSTEM V2.0.362  
Humidity:65.0%  
Test Distance:9.200m [K=1.0000]  
Remarks:

### UGR(Unified Glare Rating) Table

Test:U:24.00V I:0.2365A P:5.676W PF:1.000 Freq:50.00Hz Lamp Flux:4.78349x70 lm											
NAME: P01-24V-5050-70-SPI-RGBW(3000K)-G					TYPE:			WEIGHT:			
SPEC.:					DIM.:			SERIAL No.:			
MFR.: EVERFINE					SUR.:1*0.014			Shielding Angle:			
ceiling/cavity	0.7	0.7	0.5	0.5	0.3	0.7	0.7	0.5	0.5	0.3	
walls	0.5	0.3	0.5	0.3	0.3	0.5	0.3	0.5	0.3	0.3	
working plane	0.2	0.2	0.2	0.2	0.2	0.2	0.2	0.2	0.2	0.2	
Room dimensions	Viewed crosswise					Viewed endwise					
x = 2H y = 2H	24.4	25.9	24.7	26.1	26.3	23.5	25.0	23.8	25.2	25.5	
	3H	26.0	27.4	26.4	27.7	27.9	24.5	25.9	24.8	26.1	26.4
	4H	26.7	28.0	27.0	28.3	28.6	24.7	26.0	25.1	26.3	26.6
	6H	27.2	28.4	27.6	28.7	29.1	24.8	26.0	25.1	26.3	26.6
	8H	27.4	28.6	27.8	28.9	29.2	24.8	26.0	25.1	26.3	26.6
	12H	27.6	28.8	28.0	29.1	29.4	24.7	25.9	25.1	26.2	26.5
4H	2H	25.0	26.3	25.3	26.5	26.8	24.3	25.6	24.6	25.9	26.2
	3H	26.8	27.9	27.2	28.3	28.6	25.5	26.7	25.9	27.0	27.3
	4H	27.6	28.7	28.0	29.0	29.4	25.9	26.9	26.3	27.3	27.7
	6H	28.3	29.2	28.7	29.6	30.0	26.1	27.0	26.5	27.4	27.8
	8H	28.6	29.4	29.0	29.8	30.2	26.1	27.0	26.6	27.4	27.8
	12H	28.8	29.6	29.3	30.0	30.5	26.1	26.9	26.6	27.3	27.8
8H	4H	27.9	28.7	28.3	29.1	29.5	26.4	27.2	26.8	27.6	28.0
	6H	28.7	29.4	29.2	29.9	30.3	26.7	27.4	27.2	27.9	28.3
	8H	29.1	29.7	29.6	30.2	30.7	26.9	27.5	27.3	27.9	28.4
	12H	29.5	30.0	30.0	30.5	31.0	26.9	27.5	27.4	27.9	28.4
12H	4H	27.8	28.6	28.3	29.0	29.5	26.4	27.2	26.9	27.6	28.0
	6H	28.8	29.4	29.2	29.8	30.3	26.9	27.5	27.4	28.0	28.4
	8H	29.2	29.8	29.7	30.2	30.7	27.1	27.6	27.6	28.1	28.6
Variations with the observer position at spacings:											
S = 1.0H	+ 0.1 / - 0.2					+ 0.2 / - 0.3					
1.5H	+ 0.2 / - 0.3					+ 0.3 / - 0.5					
2.0H	+ 0.1 / - 0.3					+ 0.2 / - 0.6					

CIE Pub.117, 334.8 lm Total Lamp Luminous Flux Correct (8log(F/F0) = -3.8)

C Range: 0 - 360DEG  
C Interval: 30.0DEG  
Test Speed: HIGH  
Temperature:25.3DEG  
Operators:LPC  
Test Date:2021-10-20

γ Range: 0 - 120DEG  
γ Interval: 1.0DEG  
Test System:EVERFINE GO-2000B\_V1 SYSTEM V2.0.362  
Humidity:65.0%  
Test Distance:9.200m [K=1.0000]  
Remarks:

### UTILIZATION FACTORS TABLE

Test:U:24.00V I:0.2365A P:5.676W PF:1.000 Freq:50.00Hz Lamp Flux:4.78349x70 lm		
NAME: P01-24V-5050-70-SPI-RGBW(3000K)-G	TYPE:	WEIGHT:
SPEC.:	DIM.:	SERIAL No.:
MFR.: EVERFINE	SUR.:1*0.014	Shielding Angle:

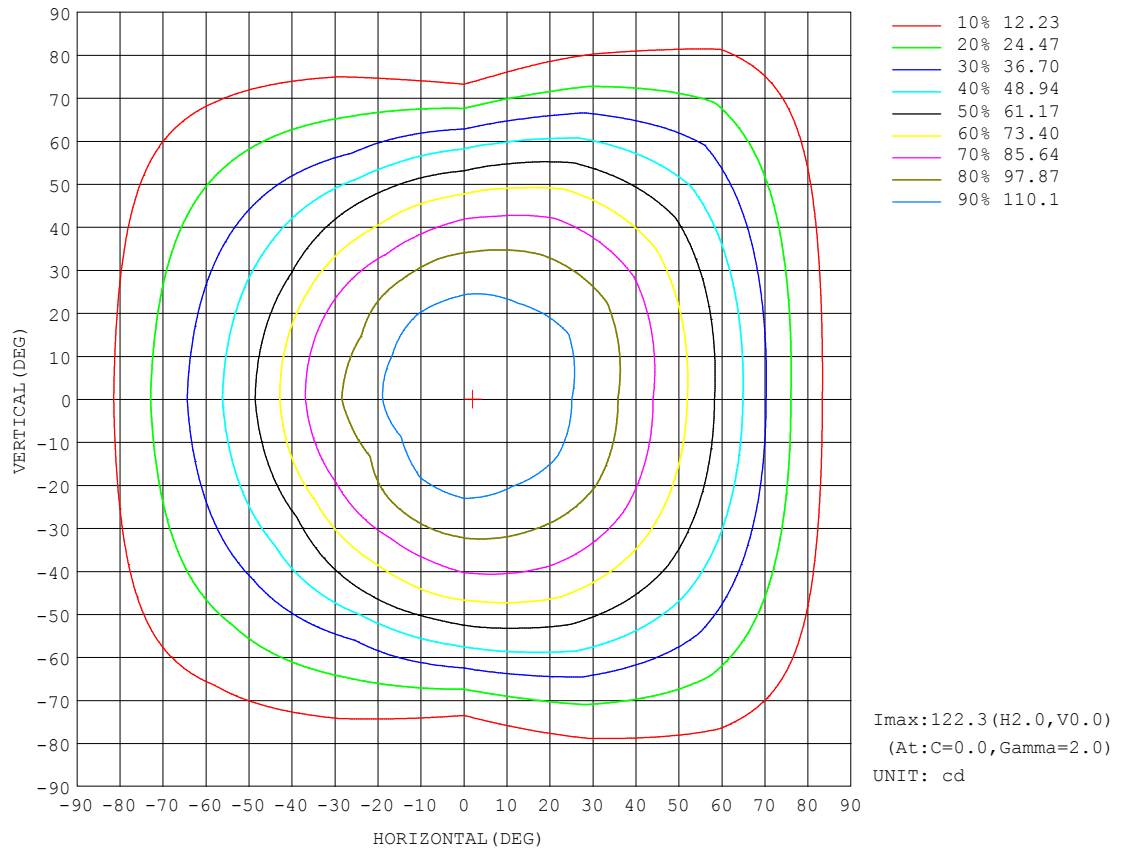
REFLECTANCE										
Ceiling	0.8	0.8	0.8	0.7	0.7	0.7	0.5	0.5	0.5	0
Walls	0.7	0.5	0.3	0.7	0.5	0.3	0.7	0.5	0.3	0
Working plane	0.2	0.2	0.2	0.2	0.2	0.2	0.2	0.2	0.2	0
ROOM INDEX	UTILIZATION FACTORS (PERCENT) $k(RI) \times RCR = 5$									
$k = 0.60$	58	46	40	57	46	40	56	46	39	33
0.80	68	56	49	67	56	49	65	55	49	42
1.00	76	65	58	75	65	58	73	66	57	50
1.25	83	73	66	82	72	65	79	71	65	57
1.50	88	78	72	87	78	71	83	76	70	62
2.00	95	87	80	93	85	79	89	83	78	70
2.50	99	91	85	97	90	84	93	87	82	74
3.00	102	95	90	100	94	89	96	91	86	78
4.00	106	100	96	104	98	94	99	95	91	82
5.00	108	104	99	106	101	98	101	98	95	85
ROOM INDEX	UF (total)									Direct
According to DIN EN 13032-2 2004			Suspended					SHRNOM = 1.25		

C Range: 0 - 360DEG  
 C Interval: 30.0DEG  
 Test Speed: HIGH  
 Temperature:25.3DEG  
 Operators:LPC  
 Test Date:2021-10-20

$\gamma$  Range: 0 - 120DEG  
 $\gamma$  Interval: 1.0DEG  
 Test System:EVERFINE GO-2000B\_V1 SYSTEM V2.0.362  
 Humidity:65.0%  
 Test Distance:9.200m [K=1.0000]  
 Remarks:

## ISOCANDELA DIAGRAM

Test:U:24.00V I:0.2365A P:5.676W PF:1.000 Freq:50.00Hz Lamp Flux:4.78349x70 lm		
NAME: P01-24V-5050-70-SPI-RGBW(3000K)-G	TYPE:	WEIGHT:
SPEC.:	DIM.:	SERIAL No.:
MFR.: EVERFINE	SUR.:1*0.014	Shielding Angle:



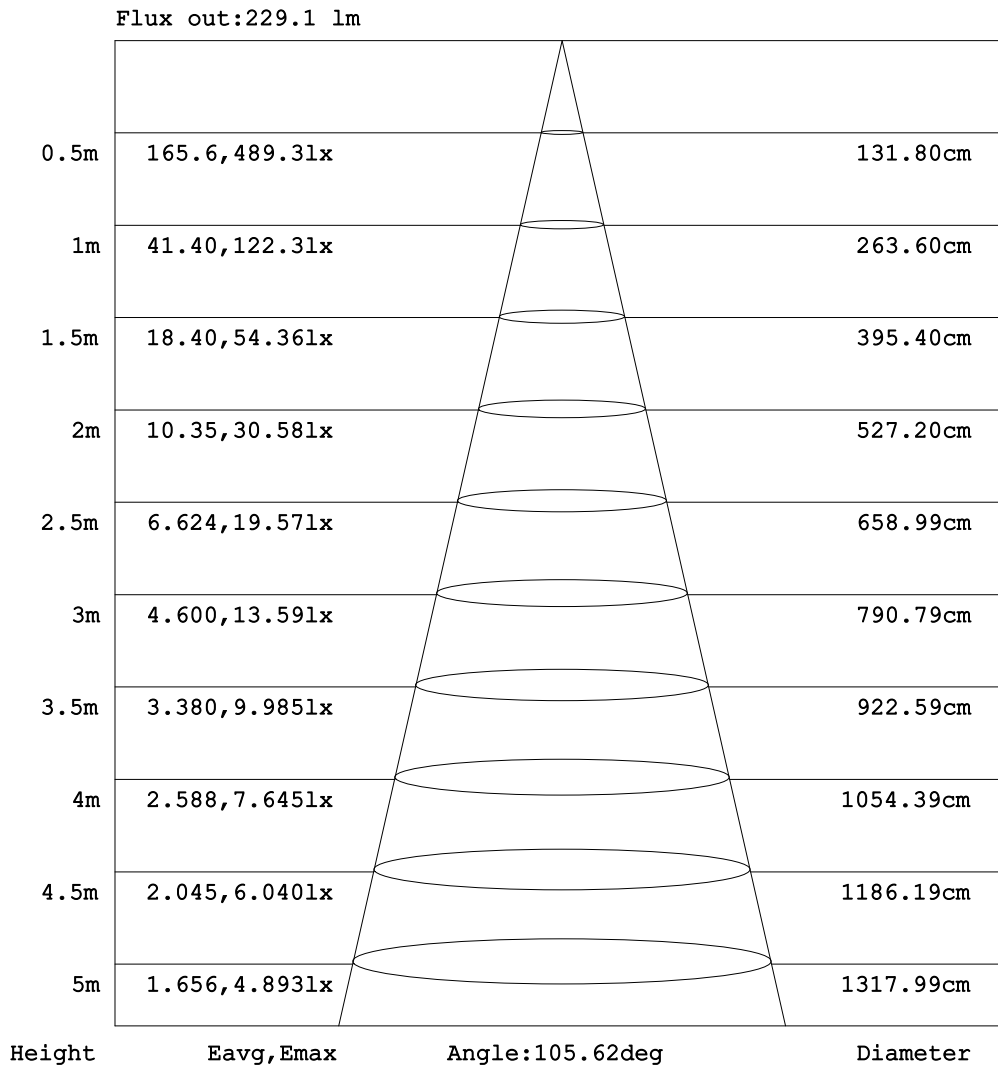
C Range: 0 - 360DEG  
C Interval: 30.0DEG  
Test Speed: HIGH  
Temperature:25.3DEG  
Operators:LPC  
Test Date:2021-10-20

γ Range: 0 - 120DEG  
γ Interval: 1.0DEG  
Test System:EVERFINE GO-2000B\_V1 SYSTEM V2.0.362  
Humidity:65.0%  
Test Distance:9.200m [K=1.0000]  
Remarks:



### AAI Figure

Test:U:24.00V I:0.2365A P:5.676W PF:1.000 Freq:50.00Hz Lamp Flux:4.78349x70 lm		
NAME: P01-24V-5050-70-SPI-RGBW(3000K)-G	TYPE:	WEIGHT:
SPEC.:	DIM.:	SERIAL No.:
MFR.: EVERFINE	SUR.:1*0.014	Shielding Angle:



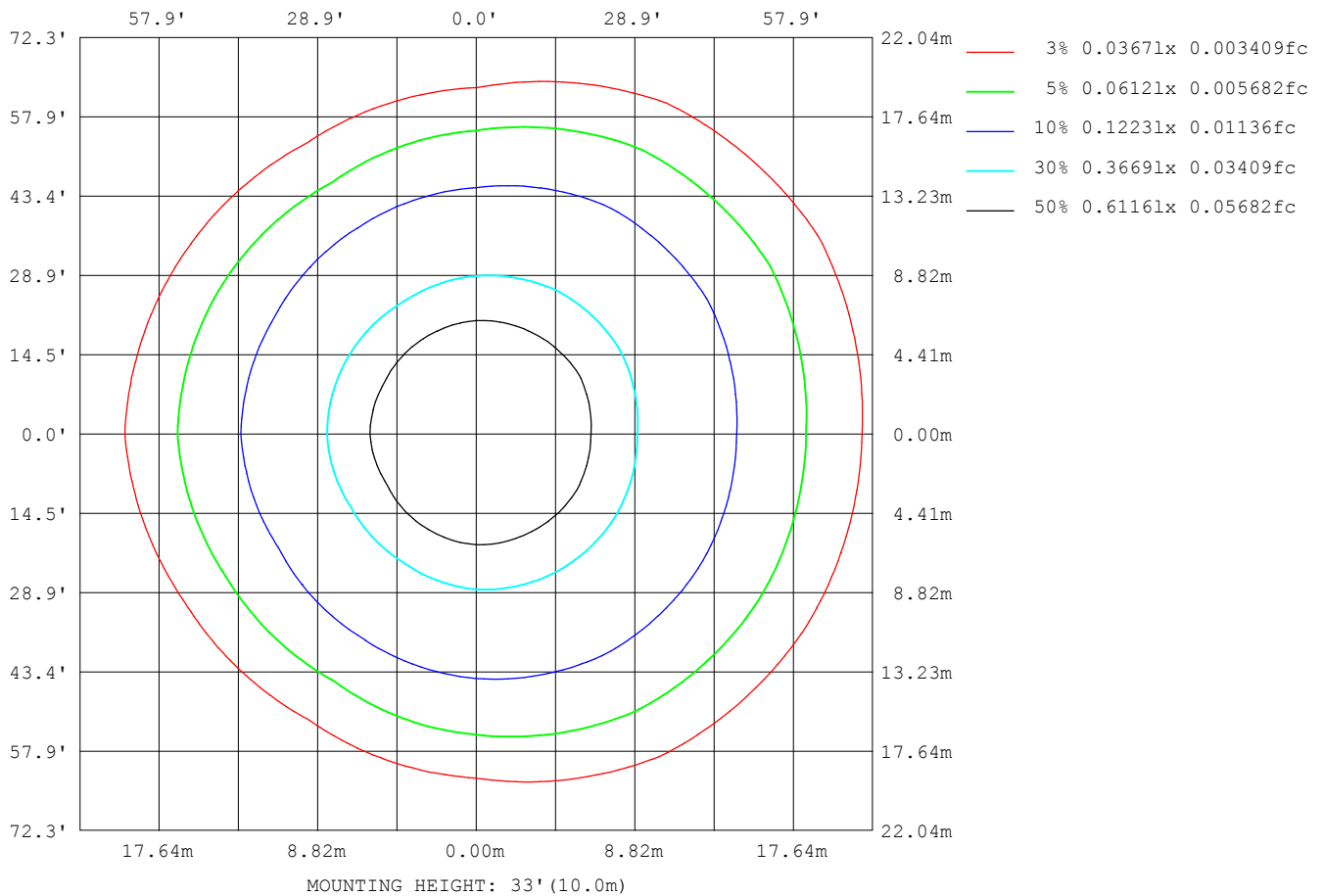
Note:The Curves indicate the illuminated area and the average illumination when the luminaire is at different distance.

C Range: 0 - 360DEG  
C Interval: 30.0DEG  
Test Speed: HIGH  
Temperature:25.3DEG  
Operators:LPC  
Test Date:2021-10-20

γ Range: 0 - 120DEG  
γ Interval: 1.0DEG  
Test System:EVERFINE GO-2000B\_V1 SYSTEM V2.0.362  
Humidity:65.0%  
Test Distance:9.200m [K=1.0000]  
Remarks:

### ISOLUX DIAGRAM

Test:U:24.00V I:0.2365A P:5.676W PF:1.000 Freq:50.00Hz Lamp Flux:4.78349x70 lm		
NAME: P01-24V-5050-70-SPI-RGBW(3000K)-G	TYPE:	WEIGHT:
SPEC.:	DIM.:	SERIAL No.:
MFR.: EVERFINE	SUR.:1*0.014	Shielding Angle:



C Range: 0 - 360DEG  
C Interval: 30.0DEG  
Test Speed: HIGH  
Temperature:25.3DEG  
Operators:LPC  
Test Date:2021-10-20

γ Range: 0 - 120DEG  
γ Interval: 1.0DEG  
Test System:EVERFINE GO-2000B\_V1 SYSTEM V2.0.362  
Humidity:65.0%  
Test Distance:9.200m [K=1.0000]  
Remarks:

## LED Avg.L Report

Test:U:24.00V I:0.2365A P:5.676W PF:1.000 Freq:50.00Hz Lamp Flux:4.78349x70 lm		
NAME: P01-24V-5050-70-SPI-RGBW(3000K)-G	TYPE:	WEIGHT:
SPEC.:	DIM.:	SERIAL No.:
MFR.: EVERFINE	SUR.:1*0.014	Shielding Angle:

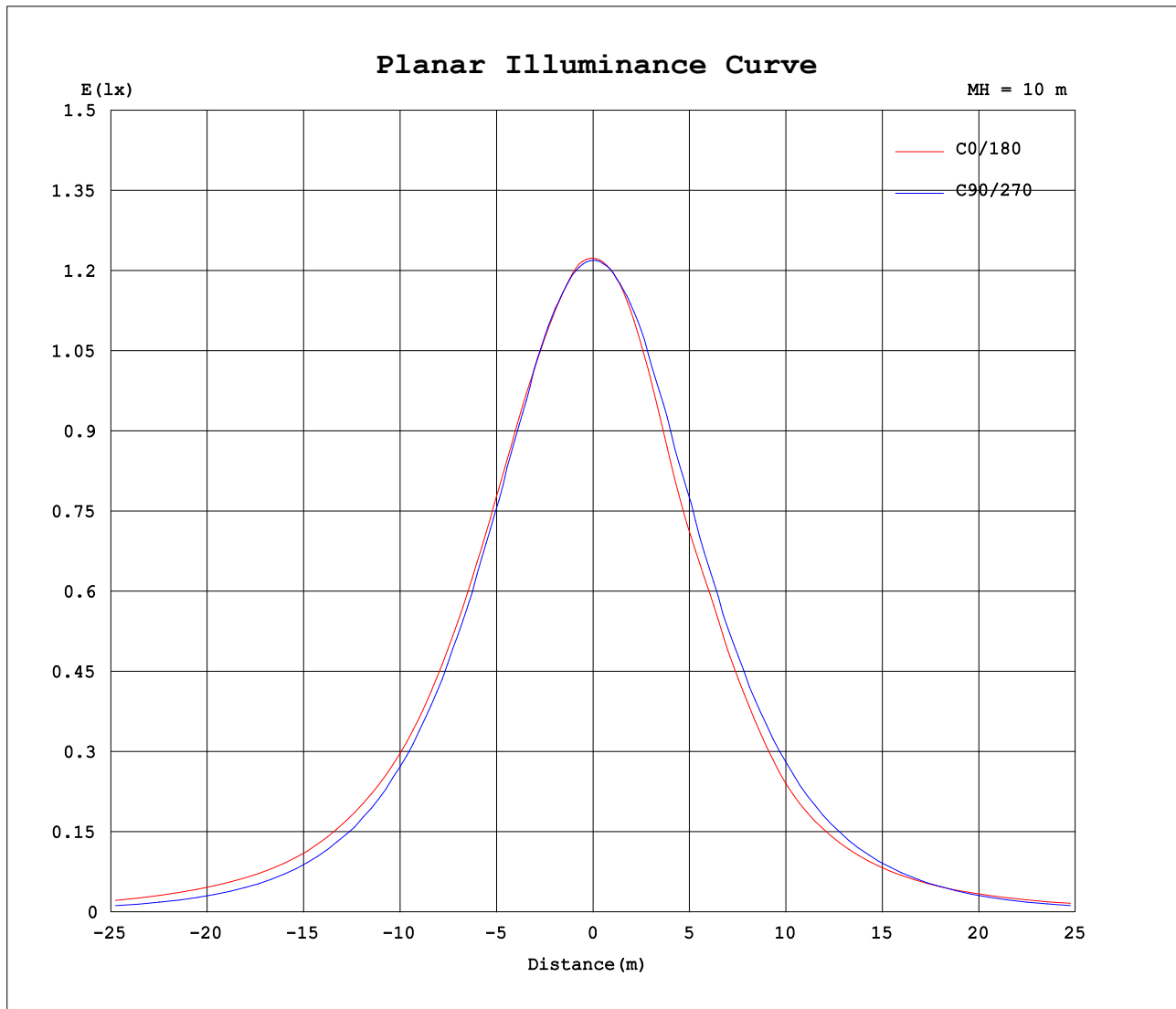
AvgL	cd/m2
L_0~180 (65) av	7140
L_0~180 (75) av	6607
L_0~180 (85) av	7217
L_90~270 (65) av	5190
L_90~270 (75) av	2623
L_90~270 (85) av	960
L_45 (65) av	6616
L_45 (75) av	5974
L_45 (85) av	5699

Standard: GB/T 29293-2012

C Range: 0 - 360DEG  
 C Interval: 30.0DEG  
 Test Speed: HIGH  
 Temperature:25.3DEG  
 Operators:LPC  
 Test Date:2021-10-20

γ Range: 0 - 120DEG  
 γ Interval: 1.0DEG  
 Test System:EVERFINE GO-2000B\_V1 SYSTEM V2.0.362  
 Humidity:65.0%  
 Test Distance:9.200m [K=1.0000]  
 Remarks:

## Planar Illuminance Curve



C Range: 0 - 360DEG  
C Interval: 30.0DEG  
Test Speed: HIGH  
Temperature: 25.3DEG  
Operators: LPC  
Test Date: 2021-10-20

$\gamma$  Range: 0 - 120DEG  
 $\gamma$  Interval: 1.0DEG  
Test System: EVERFINE GO-2000B\_V1 SYSTEM V2.0.362  
Humidity: 65.0%  
Test Distance: 9.200m [K=1.0000]  
Remarks:

## LUMINOUS DISTRIBUTION INTENSITY DATA

Test:U:24.00V I:0.2365A P:5.676W PF:1.000 Freq:50.00Hz Lamp Flux:4.78349x70 lm		
NAME: P01-24V-5050-70-SPI-RGBW(3000K)-G	TYPE:	WEIGHT:
SPEC.:	DIM.:	SERIAL No.:
MFR.: EVERFINE	SUR.:1*0.014	Shielding Angle:

Table--1

UNIT: cd

C (DEG) γ (DEG)	0	30	60	90	120	150	180	210	240	270	300	330						
0	122	122	122	122	122	122	122	122	122	122	122	122						
5	122	122	122	121	121	121	122	122	122	122	122	122						
10	120	120	120	120	119	118	120	120	120	121	121	121						
15	117	117	118	117	116	113	115	116	118	119	120	119						
20	114	114	114	113	111	106	108	109	113	115	116	116						
25	110	110	108	107	105	98.4	101	102	107	110	111	113						
30	105	105	103	102	97.1	93.1	96.5	95.5	99.6	104	106	109						
35	99.0	99.4	96.8	94.4	87.7	85.7	89.0	89.6	90.7	96.5	101	104						
40	91.8	92.3	90.0	86.2	78.5	75.7	79.8	80.0	81.4	88.5	94.8	97.0						
45	84.1	84.5	82.3	77.1	69.5	64.1	68.1	68.9	72.0	79.4	87.5	89.4						
50	76.6	75.4	73.5	66.8	59.8	54.3	58.8	57.5	62.6	68.3	78.7	81.0						
55	67.4	66.8	63.7	55.3	46.8	46.2	50.7	49.4	50.0	57.0	69.0	72.2						
60	58.2	57.5	53.4	42.8	36.2	38.0	43.0	40.8	38.1	44.1	58.3	63.1						
65	48.7	47.2	42.4	30.4	28.5	30.3	35.8	32.8	30.0	31.1	46.9	52.8						
70	37.4	37.4	31.5	18.5	21.1	23.0	28.7	25.3	22.2	19.0	35.4	43.0						
75	26.4	27.4	21.4	9.96	13.8	16.0	21.4	18.0	14.8	9.05	24.2	33.1						
80	17.5	17.6	12.8	4.39	7.93	9.51	14.3	11.0	8.41	3.24	14.7	22.7						
85	9.96	9.82	6.19	1.51	3.72	4.61	7.66	5.35	3.71	0.84	7.15	13.3						
90	4.69	4.66	2.49	1.11	1.98	2.08	2.96	1.97	1.47	0.55	2.53	6.42						
95	2.01	2.10	1.75	1.19	1.85	1.80	1.05	1.21	1.32	0.60	1.30	2.54						
100	1.38	1.61	1.74	1.32	1.88	1.85	1.04	1.21	1.32	0.77	1.28	1.22						
105	1.41	1.67	1.62	1.48	1.75	1.93	1.13	1.27	1.25	0.91	1.18	1.17						
110	1.46	1.74	1.80	1.50	1.91	1.99	1.21	1.35	1.47	0.92	1.40	1.17						
115	1.53	1.81	1.91	1.58	2.02	2.05	1.31	1.44	1.56	1.00	1.40	1.24						
120	1.62	1.82	1.73	1.64	2.06	2.07	1.35	1.51	1.57	1.11	1.18	1.30						
125	0.00	0.00	0.00	0.00	0.00	0.00	0.00	0.00	0.00	0.00	0.00	0.00						
130	0.00	0.00	0.00	0.00	0.00	0.00	0.00	0.00	0.00	0.00	0.00	0.00						
135	0.00	0.00	0.00	0.00	0.00	0.00	0.00	0.00	0.00	0.00	0.00	0.00						
140	0.00	0.00	0.00	0.00	0.00	0.00	0.00	0.00	0.00	0.00	0.00	0.00						
145	0.00	0.00	0.00	0.00	0.00	0.00	0.00	0.00	0.00	0.00	0.00	0.00						
150	0.00	0.00	0.00	0.00	0.00	0.00	0.00	0.00	0.00	0.00	0.00	0.00						
155	0.00	0.00	0.00	0.00	0.00	0.00	0.00	0.00	0.00	0.00	0.00	0.00						
160	0.00	0.00	0.00	0.00	0.00	0.00	0.00	0.00	0.00	0.00	0.00	0.00						
165	0.00	0.00	0.00	0.00	0.00	0.00	0.00	0.00	0.00	0.00	0.00	0.00						
170	0.00	0.00	0.00	0.00	0.00	0.00	0.00	0.00	0.00	0.00	0.00	0.00						
175	0.00	0.00	0.00	0.00	0.00	0.00	0.00	0.00	0.00	0.00	0.00	0.00						
180	0.00	0.00	0.00	0.00	0.00	0.00	0.00	0.00	0.00	0.00	0.00	0.00						

C Range: 0 - 360DEG  
C Interval: 30.0DEG  
Test Speed: HIGH  
Temperature:25.3DEG  
Operators:LPC  
Test Date:2021-10-20

γ Range: 0 - 120DEG  
γ Interval: 1.0DEG  
Test System:EVERFINE GO-2000B\_V1 SYSTEM V2.0.362  
Humidity:65.0%  
Test Distance:9.200m [K=1.0000]  
Remarks: