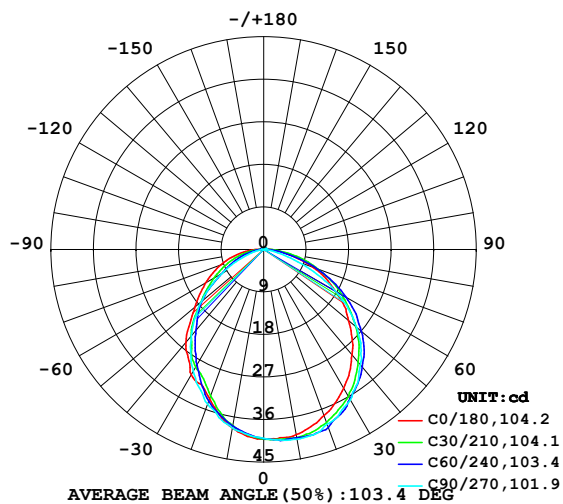


## LUMINAIRE PHOTOMETRIC TEST REPORT

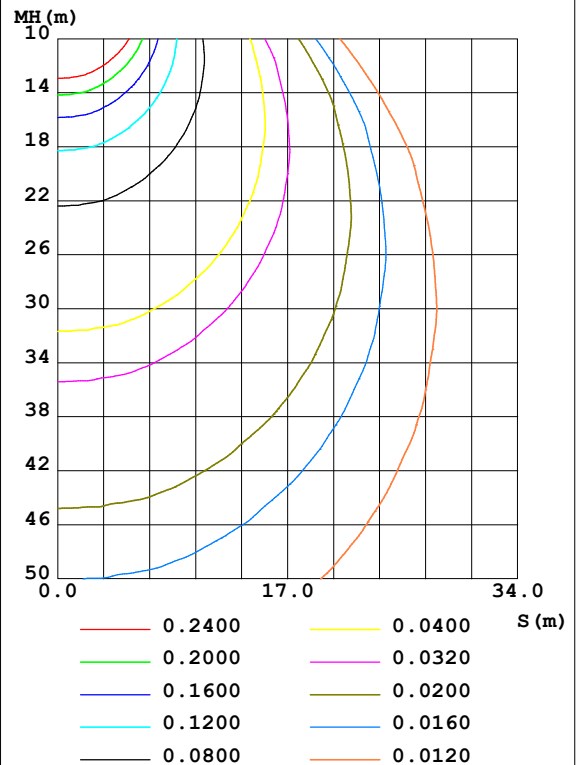
Test:U:24.00V I:0.2369A P:5.686W PF:1.000 Freq:50.00Hz Lamp Flux:1.5177x70 lm		
NAME: P01-24V-5050-70-SPI-RGBW(3000K)-R	TYPE:	WEIGHT:
SPEC.:	DIM.:	SERIAL No.:
MFR.: EVERFINE	SUR.:1*0.014	Shielding Angle:

DATA OF LAMP		PHOTOMETRIC DATA Eff: 18.69 lm/W			
MODEL	5050	I <sub>max</sub> (cd)	40.77	S/MH(C0/180)	1.15
NOMINAL POWER(W)	12	LOR(%)	100.0	S/MH(C90/270)	1.13
RATED VOLTAGE(V)	24	TOTAL FLUX(lm)	106.24	η UP,DN(C0-180)	0.8,53.8
NOMINAL FLUX(lm)	1.5177	CIE CLASS	DIRECT	η UP,DN(C180-360)	0.6,44.9
LAMPS INSIDE	70	η up(%)	1.4	CIBSE SHR NOM	1.25
TEST VOLTAGE(V)	24	η down(%)	98.6	CIBSE SHR MAX	1.35

LUMINOUS INTENSITY DISTRIBUTION DIAGRAM



C0 PLANE ISOLUX DIAGRAM (UNIT:lx)



C Range: 0 - 360DEG  
 C Interval: 30.0DEG  
 Test Speed: HIGH  
 Temperature: 25.3DEG  
 Operators: LPC  
 Test Date: 2021-10-20

γ Range: 0 - 120DEG  
 γ Interval: 1.0DEG  
 Test System: EVERFINE GO-2000B\_V1 SYSTEM V2.0.362  
 Humidity: 65.0%  
 Test Distance: 9.200m [K=1.0000]  
 Remarks:

## ZONAL FLUX DIAGRAM

ZONAL FLUX DIAGRAM:

$\gamma$	C0	C45	C90	C135	C180	C225	C270	C315	$\gamma$	$\Phi$ zone	$\Phi$ total	%lum, lamp
10	39.77	40.44	40.75	39.15	38.27	37.83	38.29	38.77	0- 10	3.778	3.778	3.56,3.56
20	37.38	39.52	39.35	36.07	33.58	33.52	34.80	36.19	10- 20	10.70	14.48	13.6,13.6
30	33.87	36.19	36.77	32.18	30.66	28.54	29.82	32.15	20- 30	15.84	30.32	28.5,28.5
40	29.11	31.81	31.88	26.95	25.64	23.14	23.80	27.36	30- 40	18.77	49.09	46.2,46.2
50	23.49	26.25	25.73	20.91	19.01	17.22	17.14	21.59	40- 50	18.92	68.01	64,64
60	17.47	19.51	17.47	14.29	14.23	11.23	10.30	15.20	50- 60	16.30	84.31	79.4,79.4
70	11.28	12.15	7.756	9.011	9.785	6.802	4.376	9.101	60- 70	11.83	96.14	90.5,90.5
80	4.608	5.091	1.399	3.998	5.227	2.985	0.9418	3.895	70- 80	6.514	102.7	96.6,96.6
90	1.148	0.9596	0.3166	0.8064	1.234	0.6338	0.1608	0.8300	80- 90	2.145	104.8	98.6,98.6
100	0.4071	0.4825	0.3771	0.5227	0.2966	0.4144	0.2010	0.3795	90-100	0.5252	105.3	99.1,99.1
110	0.4222	0.4975	0.4272	0.5401	0.3519	0.4699	0.2915	0.4096	100-110	0.4429	105.8	99.6,99.6
120	0.4573	0.5202	0.4825	0.5528	0.3669	0.4950	0.3569	0.4146	110-120	0.4536	106.2	100,100
130	0	0	0	0	0	0	0	0	120-130	0.0222	106.2	100,100
140	0	0	0	0	0	0	0	0	130-140	0	106.2	100,100
150	0	0	0	0	0	0	0	0	140-150	0	106.2	100,100
160	0	0	0	0	0	0	0	0	150-160	0	106.2	100,100
170	0	0	0	0	0	0	0	0	160-170	0	106.2	100,100
180	0	0	0	0	0	0	0	0	170-180	0	106.2	100,100
DEG	LUMINOUS INTENSITY:cd									UNIT:lm		

Conical surface Flux(90deg): 58.717 lm

%lum = 55.3%

%lamp = 55.3%

Conical surface Flux(120deg): 84.308 lm

%lum = 79.4%

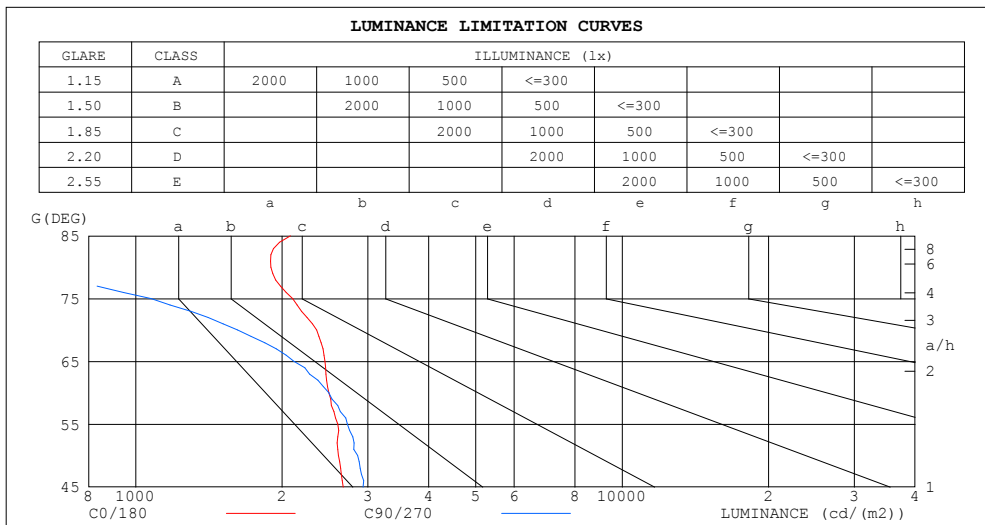
%lamp = 79.4%

C Range: 0 - 360DEG  
 C Interval: 30.0DEG  
 Test Speed: HIGH  
 Temperature:25.3DEG  
 Operators:LPC  
 Test Date:2021-10-20

$\gamma$  Range: 0 - 120DEG  
 $\gamma$  Interval: 1.0DEG  
 Test System:EVERFINE GO-2000B\_V1 SYSTEM V2.0.362  
 Humidity:65.0%  
 Test Distance:9.200m [K=1.0000]  
 Remarks:

## LUMINANCE LIMITATION CURVES

Test:U:24.00V I:0.2369A P:5.686W PF:1.000 Freq:50.00Hz Lamp Flux:1.5177x70 lm		
NAME: P01-24V-5050-70-SPI-RGBW(3000K)-R	TYPE:	WEIGHT:
SPEC.:	DIM.:	SERIAL No.:
MFR.: EVERFINE	SUR.:1*0.014	Shielding Angle:



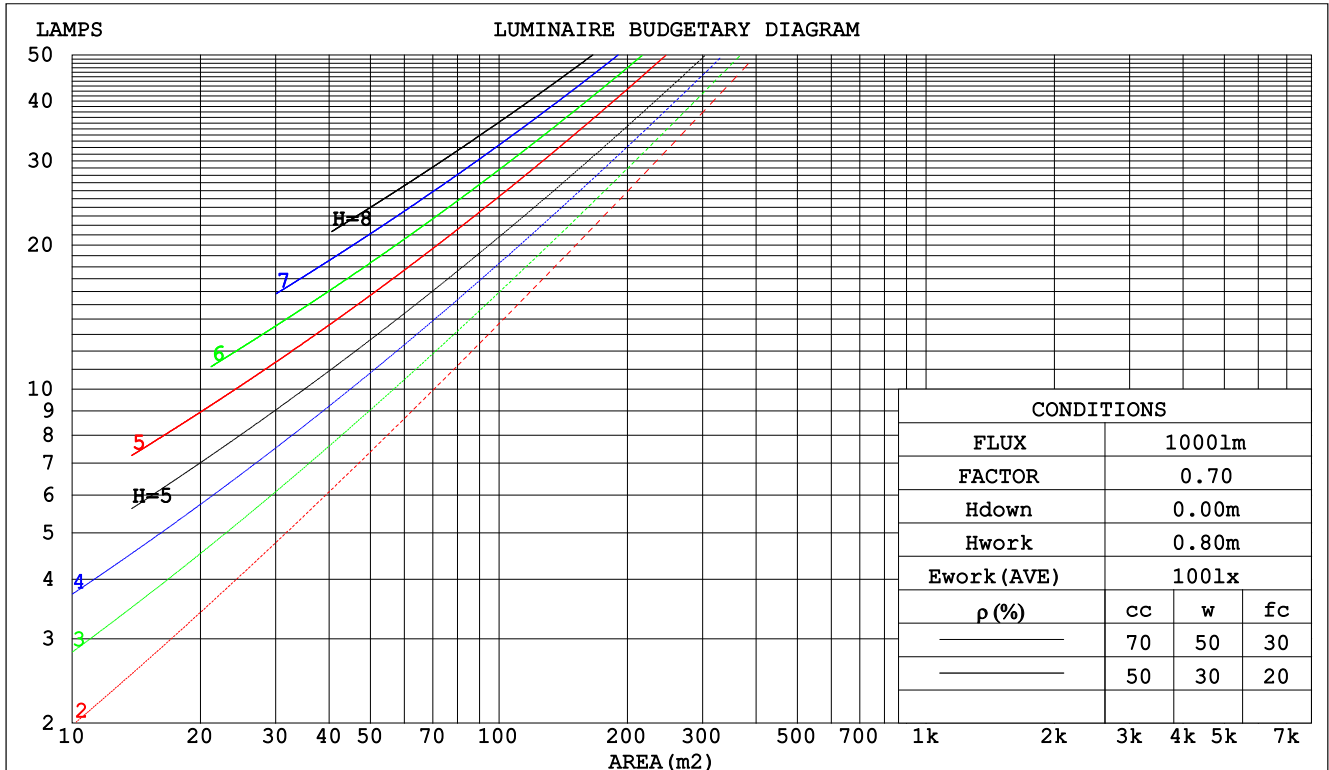
C Range: 0 - 360DEG  
C Interval: 30.0DEG  
Test Speed: HIGH  
Temperature:25.3DEG  
Operators:LPC  
Test Date:2021-10-20

γ Range: 0 - 120DEG  
γ Interval: 1.0DEG  
Test System:EVERFINE GO-2000B\_V1 SYSTEM V2.0.362  
Humidity:65.0%  
Test Distance:9.200m [K=1.0000]  
Remarks:

CU AND LUMINAIRE BUDGETARY ESTIMATE DIAGRAM

Test:U:24.00V I:0.2369A P:5.686W PF:1.000 Freq:50.00Hz Lamp Flux:1.5177x70 lm		
NAME: P01-24V-5050-70-SPI-RGBW(3000K)-R	TYPE:	WEIGHT:
SPEC.:	DIM.:	SERIAL No.:
MFR.: EVERFINE	SUR.:1*0.014	Shielding Angle:

pcc	80%			70%			50%			30%			10%			0
pw	50%	30%	10%	50%	30%	10%	50%	30%	10%	50%	30%	10%	50%	30%	10%	0
pfc	20%			20%			20%			20%			20%			0
RCR	RCR:Room Cavity Ratio			Coefficients of Utilization(CU)												
0.0	1.19	1.19	1.19	1.16	1.16	1.16	1.10	1.10	1.10	1.05	1.05	1.05	1.01	1.01	1.01	.99
1.0	1.04	.00	.96	1.02	.98	.94	.97	.94	.91	.93	.90	.88	.89	.87	.85	.83
2.0	.91	.84	.79	.89	.83	.78	.85	.80	.75	.82	.77	.74	.78	.75	.72	.70
3.0	.80	.72	.66	.78	.71	.65	.75	.69	.64	.72	.67	.62	.70	.65	.61	.59
4.0	.71	.62	.56	.70	.62	.55	.67	.60	.54	.65	.58	.54	.62	.57	.53	.51
5.0	.64	.55	.48	.62	.54	.48	.60	.53	.47	.58	.52	.47	.56	.50	.46	.44
6.0	.57	.49	.42	.56	.48	.42	.54	.47	.41	.53	.46	.41	.51	.45	.41	.38
7.0	.52	.43	.37	.51	.43	.37	.50	.42	.37	.48	.41	.36	.47	.41	.36	.34
8.0	.48	.39	.33	.47	.39	.33	.45	.38	.33	.44	.37	.33	.43	.37	.32	.31
9.0	.44	.36	.30	.43	.35	.30	.42	.35	.30	.41	.34	.30	.40	.34	.29	.27
10.0	.40	.33	.27	.40	.32	.27	.39	.32	.27	.38	.31	.27	.37	.31	.27	.25



C Range: 0 - 360DEG  
 C Interval: 30.0DEG  
 Test Speed: HIGH  
 Temperature:25.3DEG  
 Operators:LPC  
 Test Date:2021-10-20

γ Range: 0 - 120DEG  
 γ Interval: 1.0DEG  
 Test System:EVERFINE GO-2000B\_V1 SYSTEM V2.0.362  
 Humidity:65.0%  
 Test Distance:9.200m [K=1.0000]  
 Remarks:

### WEC AND CCEC

Test:U:24.00V I:0.2369A P:5.686W PF:1.000 Freq:50.00Hz Lamp Flux:1.5177x70 lm		
NAME: P01-24V-5050-70-SPI-RGBW(3000K)-R	TYPE:	WEIGHT:
SPEC.:	DIM.:	SERIAL No.:
MFR.: EVERFINE	SUR.:1*0.014	Shielding Angle:

pcc	80%			70%			50%			30%			10%			0	
pw	50%	30%	10%	50%	30%	10%	50%	30%	10%	50%	30%	10%	50%	30%	10%	0	
pfc	20%			20%			20%			20%			20%			0	
RCR	RCR:Room Cavity Ratio						Wall Exitance Coefficients(WEC)										
0.0																	
1.0	.303	.172	.055	.295	.168	.053	.281	.161	.052	.268	.155	.050	.257	.149	.048		
2.0	.284	.156	.048	.278	.153	.047	.265	.148	.046	.254	.143	.045	.244	.138	.043		
3.0	.263	.140	.042	.258	.138	.042	.247	.134	.041	.237	.130	.040	.227	.126	.039		
4.0	.244	.127	.037	.238	.125	.037	.229	.121	.036	.220	.118	.036	.211	.115	.035		
5.0	.226	.115	.033	.221	.113	.033	.212	.111	.033	.204	.108	.032	.197	.105	.032		
6.0	.210	.105	.030	.206	.104	.030	.198	.101	.029	.191	.099	.029	.184	.097	.029		
7.0	.195	.097	.027	.192	.096	.027	.185	.093	.027	.178	.091	.027	.172	.089	.026		
8.0	.183	.089	.025	.179	.088	.025	.173	.087	.025	.167	.085	.024	.162	.083	.024		
9.0	.171	.083	.023	.168	.082	.023	.163	.081	.023	.158	.079	.023	.153	.077	.022		
10.0	.161	.077	.021	.159	.077	.021	.154	.075	.021	.149	.074	.021	.144	.073	.021		

pcc	80%			70%			50%			30%			10%			0
pw	50%	30%	10%	50%	30%	10%	50%	30%	10%	50%	30%	10%	50%	30%	10%	0
pfc	20%			20%			20%			20%			20%			0
RCR	RCR:Room Cavity Ratio						Ceiling Cavity Exitance Coefficients(CCEC)									
0.0	.201	.201	.201	.172	.172	.172	.117	.117	.117	.067	.067	.067	.022	.022	.022	
1.0	.190	.167	.145	.163	.143	.125	.111	.098	.087	.064	.057	.050	.021	.018	.016	
2.0	.182	.142	.109	.156	.123	.095	.107	.085	.066	.062	.049	.039	.020	.016	.013	
3.0	.174	.125	.086	.149	.108	.074	.102	.075	.052	.059	.044	.031	.019	.014	.010	
4.0	.166	.111	.070	.143	.096	.061	.098	.067	.043	.057	.039	.025	.018	.013	.008	
5.0	.159	.101	.059	.136	.087	.051	.094	.061	.036	.054	.036	.021	.018	.012	.007	
6.0	.152	.093	.050	.130	.080	.044	.090	.056	.031	.052	.033	.018	.017	.011	.006	
7.0	.145	.086	.044	.125	.074	.039	.086	.052	.027	.050	.031	.016	.016	.010	.005	
8.0	.138	.080	.040	.119	.069	.035	.082	.049	.025	.048	.029	.015	.016	.009	.005	
9.0	.132	.075	.036	.114	.065	.032	.079	.046	.022	.046	.027	.013	.015	.009	.004	
10.0	.127	.071	.033	.109	.061	.029	.076	.043	.021	.044	.026	.012	.014	.008	.004	

C Range: 0 - 360DEG  
C Interval: 30.0DEG  
Test Speed: HIGH  
Temperature:25.3DEG  
Operators:LPC  
Test Date:2021-10-20

γ Range: 0 - 120DEG  
γ Interval: 1.0DEG  
Test System:EVERFINE GO-2000B\_V1 SYSTEM V2.0.362  
Humidity:65.0%  
Test Distance:9.200m [K=1.0000]  
Remarks:

### UGR(Unified Glare Rating) Table

Test:U:24.00V I:0.2369A P:5.686W PF:1.000 Freq:50.00Hz Lamp Flux:1.5177x70 lm											
NAME: P01-24V-5050-70-SPI-RGBW(3000K)-R					TYPE:			WEIGHT:			
SPEC.:					DIM.:			SERIAL No.:			
MFR.: EVERFINE					SUR.:1*0.014			Shielding Angle:			
ceiling/cavity	0.7	0.7	0.5	0.5	0.3	0.7	0.7	0.5	0.5	0.3	
walls	0.5	0.3	0.5	0.3	0.3	0.5	0.3	0.5	0.3	0.3	
working plane	0.2	0.2	0.2	0.2	0.2	0.2	0.2	0.2	0.2	0.2	
Room dimensions		Viewed crosswise					Viewed endwise				
x = 2H y = 2H	24.5	26.0	24.8	26.2	26.5	24.8	26.2	25.1	26.5	26.7	
	3H	26.1	27.4	26.4	27.7	28.0	25.8	27.2	26.2	27.5	27.7
	4H	26.7	28.0	27.0	28.2	28.5	26.1	27.4	26.4	27.6	27.9
	6H	27.1	28.3	27.4	28.6	28.9	26.1	27.3	26.4	27.6	27.9
	8H	27.2	28.4	27.6	28.7	29.0	26.1	27.2	26.4	27.6	27.9
	12H	27.3	28.5	27.7	28.8	29.1	26.0	27.2	26.4	27.5	27.8
4H	2H	25.2	26.5	25.6	26.8	27.1	25.4	26.7	25.8	27.0	27.3
	3H	27.0	28.1	27.4	28.4	28.8	26.8	27.9	27.1	28.2	28.5
	4H	27.7	28.8	28.1	29.1	29.5	27.1	28.2	27.5	28.5	28.9
	6H	28.3	29.2	28.7	29.6	30.0	27.3	28.2	27.7	28.6	29.0
	8H	28.5	29.3	28.9	29.7	30.1	27.3	28.1	27.7	28.5	28.9
	12H	28.7	29.4	29.1	29.8	30.3	27.3	28.0	27.7	28.4	28.9
8H	4H	28.0	28.9	28.5	29.3	29.7	27.5	28.3	27.9	28.7	29.1
	6H	28.8	29.5	29.2	29.9	30.4	27.8	28.5	28.3	28.9	29.4
	8H	29.1	29.7	29.6	30.2	30.6	27.9	28.5	28.3	28.9	29.4
	12H	29.4	29.9	29.9	30.4	30.9	27.9	28.4	28.4	28.9	29.4
12H	4H	28.0	28.8	28.5	29.2	29.6	27.5	28.3	28.0	28.7	29.1
	6H	28.8	29.4	29.3	29.9	30.4	27.9	28.5	28.4	29.0	29.5
	8H	29.2	29.7	29.7	30.2	30.7	28.0	28.6	28.5	29.0	29.5
Variations with the observer position at spacings:											
S = 1.0H	+ 0.2 / - 0.2					+ 0.2 / - 0.3					
1.5H	+ 0.2 / - 0.4					+ 0.3 / - 0.5					
2.0H	+ 0.2 / - 0.4					+ 0.2 / - 0.5					

CIE Pub.117, 106.2 lm Total Lamp Luminous Flux Correct (8log(F/F0) = -7.8)

C Range: 0 - 360DEG  
C Interval: 30.0DEG  
Test Speed: HIGH  
Temperature:25.3DEG  
Operators:LPC  
Test Date:2021-10-20

γ Range: 0 - 120DEG  
γ Interval: 1.0DEG  
Test System:EVERFINE GO-2000B\_V1 SYSTEM V2.0.362  
Humidity:65.0%  
Test Distance:9.200m [K=1.0000]  
Remarks:

### UTILIZATION FACTORS TABLE

Test:U:24.00V I:0.2369A P:5.686W PF:1.000 Freq:50.00Hz Lamp Flux:1.5177x70 lm		
NAME: P01-24V-5050-70-SPI-RGBW(3000K)-R	TYPE:	WEIGHT:
SPEC.:	DIM.:	SERIAL No.:
MFR.: EVERFINE	SUR.:1*0.014	Shielding Angle:

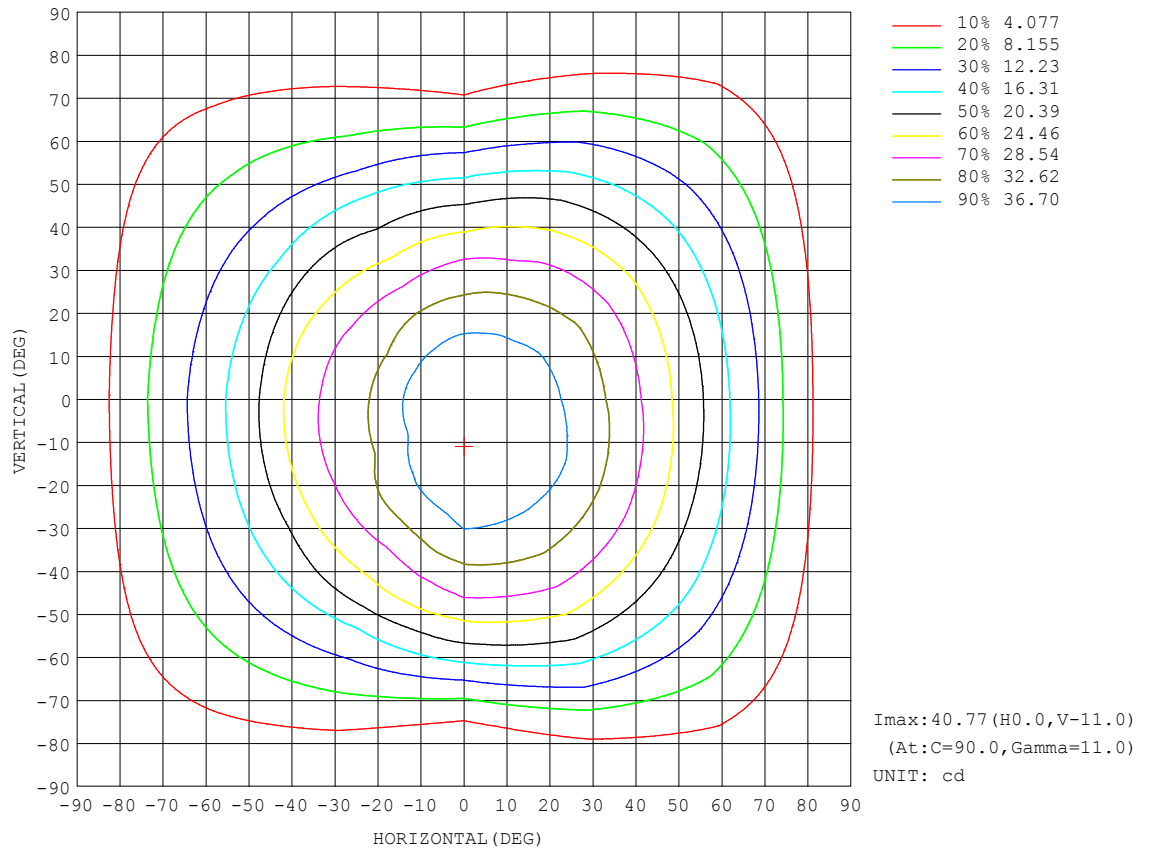
REFLECTANCE										
Ceiling	0.8	0.8	0.8	0.7	0.7	0.7	0.5	0.5	0.5	0
Walls	0.7	0.5	0.3	0.7	0.5	0.3	0.7	0.5	0.3	0
Working plane	0.2	0.2	0.2	0.2	0.2	0.2	0.2	0.2	0.2	0
ROOM INDEX	UTILIZATION FACTORS (PERCENT) $k(RI) \times RCR = 5$									
$k = 0.60$	58	47	40	58	47	40	56	46	40	33
0.80	68	57	50	67	56	50	65	56	49	42
1.00	77	66	59	75	65	58	73	66	58	51
1.25	84	73	66	82	73	66	79	71	65	58
1.50	89	79	72	87	78	71	84	76	70	63
2.00	95	87	80	93	86	80	90	83	78	70
2.50	99	91	85	97	90	84	93	87	82	74
3.00	102	95	90	100	94	89	96	91	87	78
4.00	106	101	96	104	99	94	99	95	92	82
5.00	109	104	100	106	102	98	101	98	95	85
ROOM INDEX	UF (total)									Direct
According to DIN EN 13032-2 2004			Suspended					SHRNOM = 1.25		

C Range: 0 - 360DEG  
 C Interval: 30.0DEG  
 Test Speed: HIGH  
 Temperature:25.3DEG  
 Operators:LPC  
 Test Date:2021-10-20

γ Range: 0 - 120DEG  
 γ Interval: 1.0DEG  
 Test System:EVERFINE GO-2000B\_V1 SYSTEM V2.0.362  
 Humidity:65.0%  
 Test Distance:9.200m [K=1.0000]  
 Remarks:

## ISOCANDELA DIAGRAM

Test:U:24.00V I:0.2369A P:5.686W PF:1.000 Freq:50.00Hz Lamp Flux:1.5177x70 lm		
NAME: P01-24V-5050-70-SPI-RGBW(3000K)-R	TYPE:	WEIGHT:
SPEC.:	DIM.:	SERIAL No.:
MFR.: EVERFINE	SUR.:1*0.014	Shielding Angle:



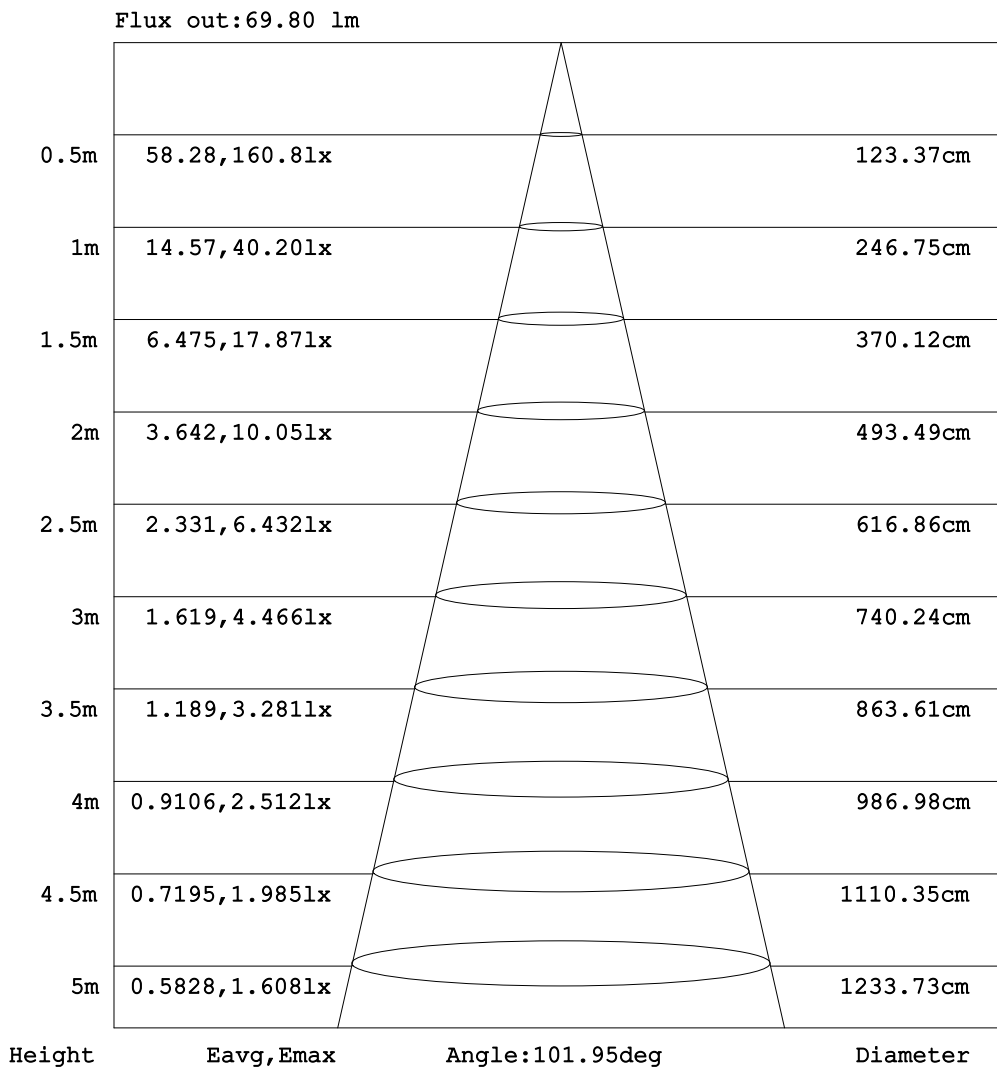
C Range: 0 - 360DEG  
C Interval: 30.0DEG  
Test Speed: HIGH  
Temperature:25.3DEG  
Operators:LPC  
Test Date:2021-10-20

γ Range: 0 - 120DEG  
γ Interval: 1.0DEG  
Test System:EVERFINE GO-2000B\_V1 SYSTEM V2.0.362  
Humidity:65.0%  
Test Distance:9.200m [K=1.0000]  
Remarks:



### AAI Figure

Test:U:24.00V I:0.2369A P:5.686W PF:1.000 Freq:50.00Hz Lamp Flux:1.5177x70 lm		
NAME: P01-24V-5050-70-SPI-RGBW(3000K)-R	TYPE:	WEIGHT:
SPEC.:	DIM.:	SERIAL No.:
MFR.: EVERFINE	SUR.:1*0.014	Shielding Angle:



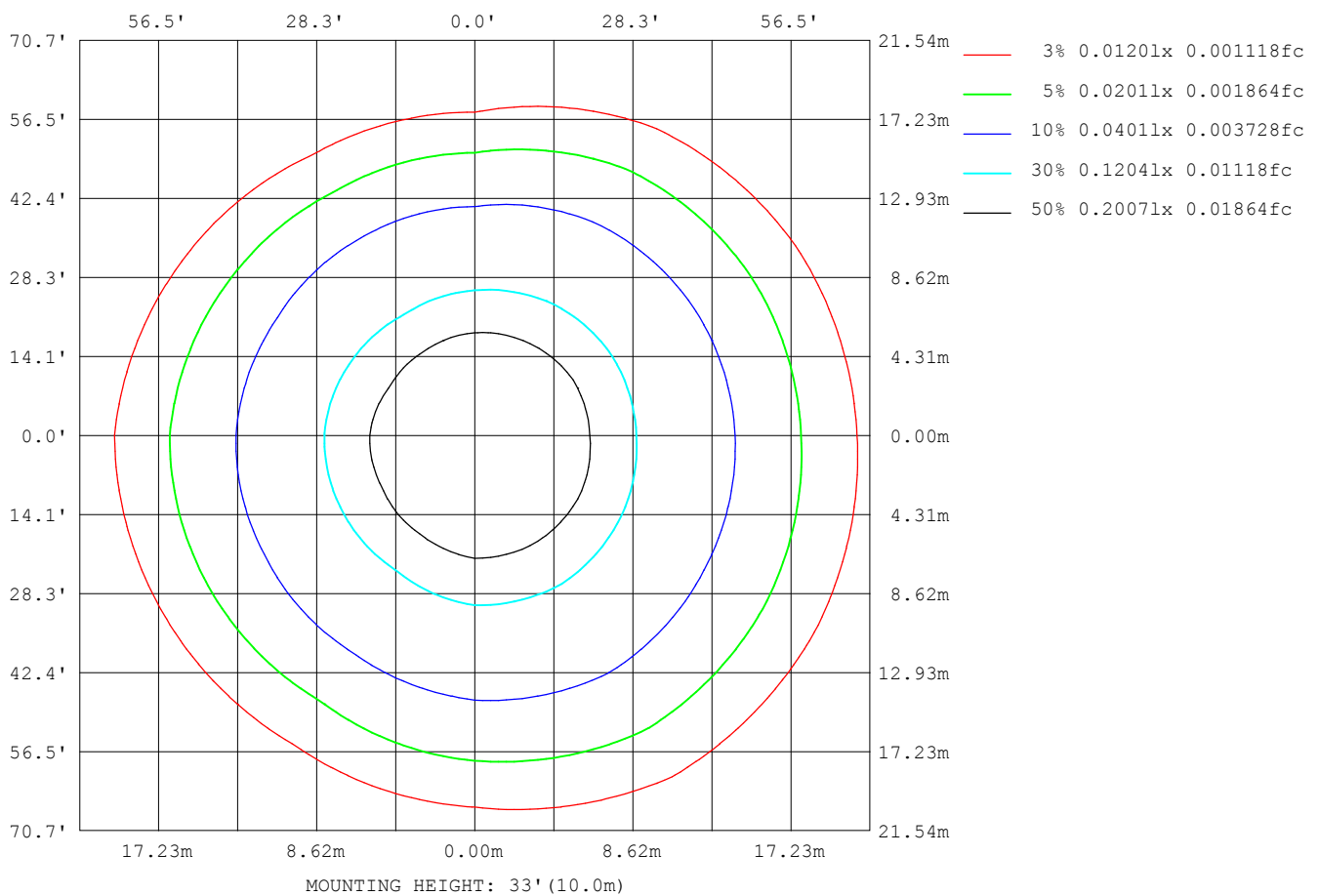
Note:The Curves indicate the illuminated area and the average illumination when the luminaire is at different distance.

C Range: 0 - 360DEG  
C Interval: 30.0DEG  
Test Speed: HIGH  
Temperature:25.3DEG  
Operators:LPC  
Test Date:2021-10-20

γ Range: 0 - 120DEG  
γ Interval: 1.0DEG  
Test System:EVERFINE GO-2000B\_V1 SYSTEM V2.0.362  
Humidity:65.0%  
Test Distance:9.200m [K=1.0000]  
Remarks:

### ISOLUX DIAGRAM

Test:U:24.00V I:0.2369A P:5.686W PF:1.000 Freq:50.00Hz Lamp Flux:1.5177x70 lm		
NAME: P01-24V-5050-70-SPI-RGBW(3000K)-R	TYPE:	WEIGHT:
SPEC.:	DIM.:	SERIAL No.:
MFR.: EVERFINE	SUR.:1*0.014	Shielding Angle:



C Range: 0 - 360DEG  
 C Interval: 30.0DEG  
 Test Speed: HIGH  
 Temperature:25.3DEG  
 Operators:LPC  
 Test Date:2021-10-20

γ Range: 0 - 120DEG  
 γ Interval: 1.0DEG  
 Test System:EVERFINE GO-2000B\_V1 SYSTEM V2.0.362  
 Humidity:65.0%  
 Test Distance:9.200m [K=1.0000]  
 Remarks:

## LED Avg.L Report

Test:U:24.00V I:0.2369A P:5.686W PF:1.000 Freq:50.00Hz Lamp Flux:1.5177x70 lm		
NAME: P01-24V-5050-70-SPI-RGBW(3000K)-R	TYPE:	WEIGHT:
SPEC.:	DIM.:	SERIAL No.:
MFR.: EVERFINE	SUR.:1*0.014	Shielding Angle:

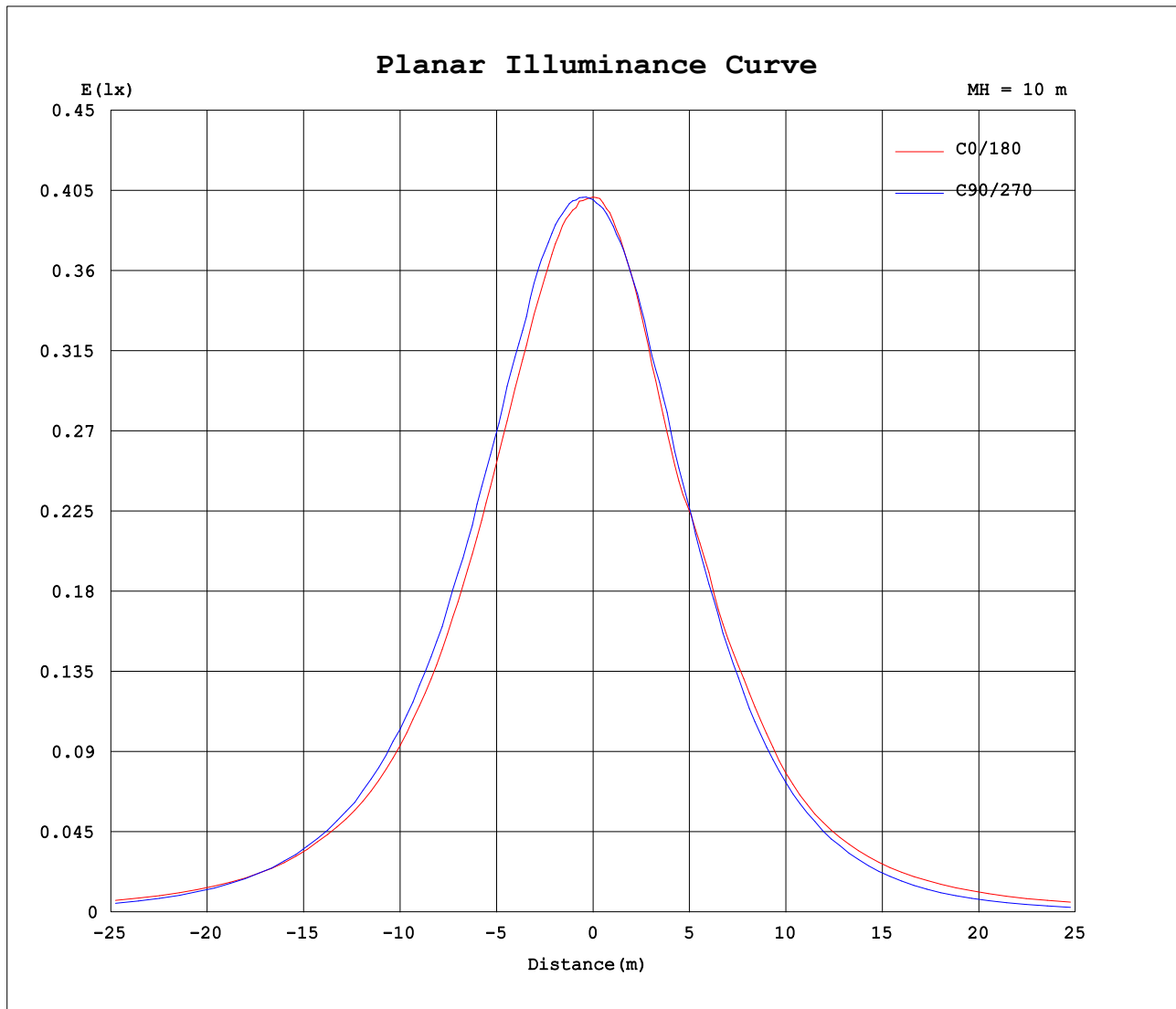
AvgL	cd/m2
L_0~180 (65) av	2233
L_0~180 (75) av	2087
L_0~180 (85) av	2269
L_90~270 (65) av	1652
L_90~270 (75) av	862
L_90~270 (85) av	270
L_45 (65) av	2073
L_45 (75) av	1838
L_45 (85) av	1671

Standard: GB/T 29293-2012

C Range: 0 - 360DEG  
 C Interval: 30.0DEG  
 Test Speed: HIGH  
 Temperature:25.3DEG  
 Operators:LPC  
 Test Date:2021-10-20

γ Range: 0 - 120DEG  
 γ Interval: 1.0DEG  
 Test System:EVERFINE GO-2000B\_V1 SYSTEM V2.0.362  
 Humidity:65.0%  
 Test Distance:9.200m [K=1.0000]  
 Remarks:

## Planar Illuminance Curve



C Range: 0 - 360DEG  
C Interval: 30.0DEG  
Test Speed: HIGH  
Temperature: 25.3DEG  
Operators: LPC  
Test Date: 2021-10-20

$\gamma$  Range: 0 - 120DEG  
 $\gamma$  Interval: 1.0DEG  
Test System: EVERFINE GO-2000B\_V1 SYSTEM V2.0.362  
Humidity: 65.0%  
Test Distance: 9.200m [K=1.0000]  
Remarks:

## LUMINOUS DISTRIBUTION INTENSITY DATA

Test:U:24.00V I:0.2369A P:5.686W PF:1.000 Freq:50.00Hz Lamp Flux:1.5177x70 lm		
NAME: P01-24V-5050-70-SPI-RGBW(3000K)-R	TYPE:	WEIGHT:
SPEC.:	DIM.:	SERIAL No.:
MFR.: EVERFINE	SUR.:1*0.014	Shielding Angle:

Table--1

UNIT: cd

C (DEG) γ (DEG)	0	30	60	90	120	150	180	210	240	270	300	330						
0	40.1	40.1	40.0	40.0	39.9	40.0	40.1	40.1	40.0	40.0	39.9	40.0						
5	40.0	40.3	40.6	40.4	40.2	39.6	39.7	39.3	39.1	39.3	39.4	39.7						
10	39.8	40.4	40.5	40.7	39.7	38.6	38.3	37.8	37.9	38.3	38.4	39.2						
15	38.8	40.0	40.6	40.6	39.1	36.8	36.3	35.6	36.2	36.8	37.5	38.1						
20	37.4	39.0	40.1	39.4	37.7	34.4	33.6	33.0	34.1	34.8	35.5	36.8						
25	35.8	37.4	38.5	38.2	35.6	32.3	31.5	30.2	31.2	32.3	33.4	35.0						
30	33.9	35.9	36.5	36.8	33.2	31.1	30.7	28.8	28.3	29.8	31.2	33.1						
35	31.7	33.6	34.7	34.6	30.5	28.8	27.9	26.7	25.4	27.0	28.7	30.9						
40	29.1	31.1	32.5	31.9	27.5	26.4	25.6	23.9	22.4	23.8	26.4	28.3						
45	26.4	28.6	30.1	29.1	25.0	23.3	22.1	20.9	19.8	20.6	23.6	25.4						
50	23.5	25.5	27.0	25.7	22.1	19.7	19.0	17.4	17.1	17.1	20.6	22.6						
55	20.9	22.1	23.9	21.9	17.9	16.9	16.5	14.7	13.7	13.8	17.4	19.4						
60	17.5	19.0	20.0	17.5	14.3	14.3	14.2	12.1	10.3	10.3	14.2	16.2						
65	14.5	15.8	16.1	12.5	11.6	11.8	11.9	9.85	7.96	7.04	11.1	13.2						
70	11.3	12.3	12.0	7.76	8.72	9.30	9.78	7.66	5.95	4.38	8.03	10.2						
75	7.62	9.22	7.81	3.90	5.95	6.88	7.51	5.55	4.04	2.35	5.29	7.38						
80	4.61	5.81	4.37	1.40	3.49	4.50	5.23	3.58	2.39	0.94	3.03	4.76						
85	2.54	3.02	1.86	0.39	1.61	2.40	3.00	1.90	1.13	0.27	1.40	2.56						
90	1.15	1.26	0.65	0.32	0.66	0.95	1.23	0.78	0.49	0.16	0.54	1.12						
95	0.48	0.50	0.49	0.34	0.52	0.51	0.34	0.41	0.44	0.16	0.39	0.48						
100	0.41	0.47	0.49	0.38	0.52	0.53	0.30	0.39	0.44	0.20	0.39	0.37						
105	0.41	0.49	0.46	0.42	0.48	0.55	0.32	0.39	0.43	0.29	0.40	0.37						
110	0.42	0.51	0.48	0.43	0.52	0.56	0.35	0.44	0.50	0.29	0.45	0.37						
115	0.44	0.53	0.52	0.45	0.53	0.56	0.37	0.44	0.53	0.29	0.44	0.39						
120	0.46	0.53	0.51	0.48	0.55	0.56	0.37	0.46	0.53	0.36	0.38	0.45						
125	0.00	0.00	0.00	0.00	0.00	0.00	0.00	0.00	0.00	0.00	0.00	0.00						
130	0.00	0.00	0.00	0.00	0.00	0.00	0.00	0.00	0.00	0.00	0.00	0.00						
135	0.00	0.00	0.00	0.00	0.00	0.00	0.00	0.00	0.00	0.00	0.00	0.00						
140	0.00	0.00	0.00	0.00	0.00	0.00	0.00	0.00	0.00	0.00	0.00	0.00						
145	0.00	0.00	0.00	0.00	0.00	0.00	0.00	0.00	0.00	0.00	0.00	0.00						
150	0.00	0.00	0.00	0.00	0.00	0.00	0.00	0.00	0.00	0.00	0.00	0.00						
155	0.00	0.00	0.00	0.00	0.00	0.00	0.00	0.00	0.00	0.00	0.00	0.00						
160	0.00	0.00	0.00	0.00	0.00	0.00	0.00	0.00	0.00	0.00	0.00	0.00						
165	0.00	0.00	0.00	0.00	0.00	0.00	0.00	0.00	0.00	0.00	0.00	0.00						
170	0.00	0.00	0.00	0.00	0.00	0.00	0.00	0.00	0.00	0.00	0.00	0.00						
175	0.00	0.00	0.00	0.00	0.00	0.00	0.00	0.00	0.00	0.00	0.00	0.00						
180	0.00	0.00	0.00	0.00	0.00	0.00	0.00	0.00	0.00	0.00	0.00	0.00						

C Range: 0 - 360DEG  
C Interval: 30.0DEG  
Test Speed: HIGH  
Temperature:25.3DEG  
Operators:LPC  
Test Date:2021-10-20

γ Range: 0 - 120DEG  
γ Interval: 1.0DEG  
Test System:EVERFINE GO-2000B\_V1 SYSTEM V2.0.362  
Humidity:65.0%  
Test Distance:9.200m [K=1.0000]  
Remarks: