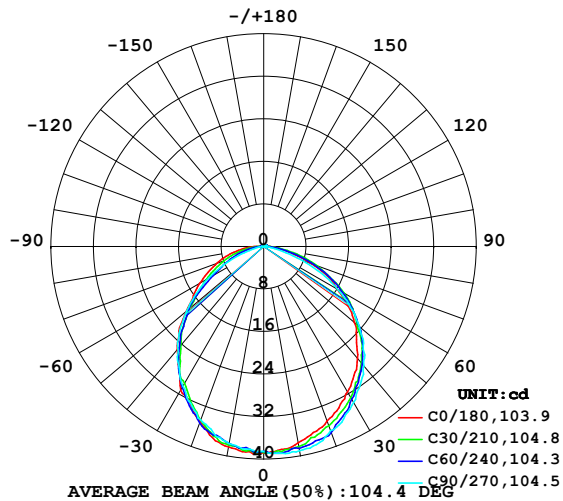


## LUMINAIRE PHOTOMETRIC TEST REPORT

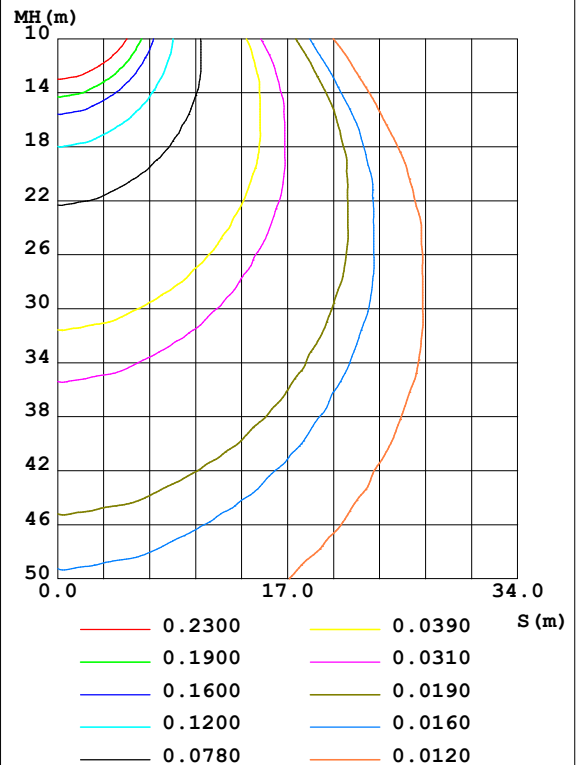
Test:U:24.00V I:0.2355A P:5.652W PF:1.000 Freq:50.00Hz Lamp Flux:1.46352x70 lm		
NAME: P01-24V-5050-70-SPI-RGBW(4000K)-R	TYPE:	WEIGHT:
SPEC.:	DIM.:	SERIAL No.:
MFR.: EVERFINE	SUR.:1*0.014	Shielding Angle:

DATA OF LAMP		PHOTOMETRIC DATA Eff: 18.13 lm/W			
MODEL	5050	I <sub>max</sub> (cd)	39.18	S/MH (C0/180)	1.20
NOMINAL POWER (W)	12	LOR (%)	100.0	S/MH (C90/270)	1.18
RATED VOLTAGE (V)	24	TOTAL FLUX (lm)	102.45	η UP, DN (C0-180)	0.8, 50.7
NOMINAL FLUX (lm)	1.46352	CIE CLASS	DIRECT	η UP, DN (C180-360)	0.6, 47.9
LAMPS INSIDE	70	η up (%)	1.4	CIBSE SHR NOM	1.25
TEST VOLTAGE (V)	24	η down (%)	98.6	CIBSE SHR MAX	1.35

LUMINOUS INTENSITY DISTRIBUTION DIAGRAM



C0 PLANE ISOLUX DIAGRAM (UNIT:lx)



C Range: 0 - 360DEG  
 C Interval: 30.0DEG  
 Test Speed: HIGH  
 Temperature: 25.3DEG  
 Operators: LPC  
 Test Date: 2021-10-20

γ Range: 0 - 120DEG  
 γ Interval: 1.0DEG  
 Test System: EVERFINE GO-2000B\_V1 SYSTEM V2.0.362  
 Humidity: 65.0%  
 Test Distance: 9.200m [K=1.0000]  
 Remarks:

## ZONAL FLUX DIAGRAM

ZONAL FLUX DIAGRAM:

$\gamma$	C0	C45	C90	C135	C180	C225	C270	C315	$\gamma$	$\Phi$ zone	$\Phi$ total	%lum, lamp
10	37.46	38.37	38.99	37.93	38.25	37.76	37.65	37.54	0- 10	3.657	3.657	3.57,3.57
20	34.92	36.55	36.86	35.15	35.05	35.04	34.75	34.96	10- 20	10.42	14.07	13.7,13.7
30	31.57	32.99	33.89	31.08	31.27	30.22	30.40	31.46	20- 30	15.46	29.53	28.8,28.8
40	27.46	28.71	29.31	24.97	25.30	24.47	25.13	27.18	30- 40	18.19	47.72	46.6,46.6
50	22.26	23.25	23.51	18.57	19.01	18.38	18.98	22.01	40- 50	18.28	66.00	64.4,64.4
60	15.95	17.28	16.00	12.19	13.83	11.72	12.01	16.13	50- 60	15.62	81.62	79.7,79.7
70	9.701	10.42	7.555	7.493	9.454	7.174	5.052	9.814	60- 70	11.28	92.91	90.7,90.7
80	3.678	4.091	1.439	3.194	5.252	3.294	0.9518	4.388	70- 80	6.118	99.02	96.7,96.7
90	0.8511	0.7587	0.3166	0.6533	1.530	0.7293	0.1457	0.9480	80- 90	2.017	101.0	98.6,98.6
100	0.3920	0.4925	0.3771	0.5277	0.2815	0.3719	0.1907	0.3493	90-100	0.5115	101.6	99.1,99.1
110	0.3970	0.5226	0.4272	0.5453	0.3317	0.4172	0.2362	0.3945	100-110	0.4289	102.0	99.5,99.5
120	0.4774	0.5277	0.4774	0.5579	0.3669	0.4724	0.2965	0.3443	110-120	0.4425	102.4	100,100
130	0	0	0	0	0	0	0	0	120-130	0.0213	102.4	100,100
140	0	0	0	0	0	0	0	0	130-140	0	102.4	100,100
150	0	0	0	0	0	0	0	0	140-150	0	102.4	100,100
160	0	0	0	0	0	0	0	0	150-160	0	102.4	100,100
170	0	0	0	0	0	0	0	0	160-170	0	102.4	100,100
180	0	0	0	0	0	0	0	0	170-180	0	102.4	100,100
DEG	LUMINOUS INTENSITY:cd									UNIT:lm		

Conical surface Flux(90deg): 57.017 lm

%lum = 55.7%

%lamp = 55.7%

Conical surface Flux(120deg): 81.622 lm

%lum = 79.7%

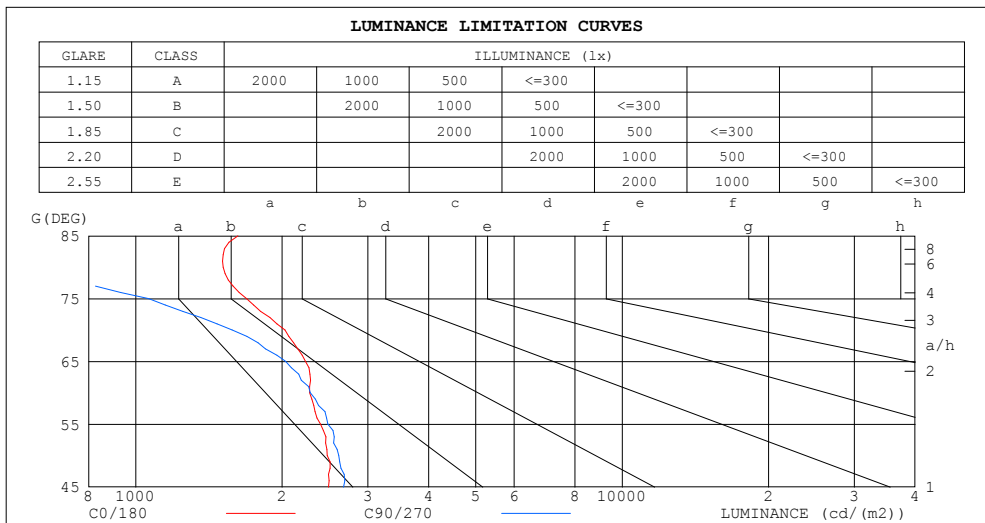
%lamp = 79.7%

C Range: 0 - 360DEG  
 C Interval: 30.0DEG  
 Test Speed: HIGH  
 Temperature:25.3DEG  
 Operators:LPC  
 Test Date:2021-10-20

$\gamma$  Range: 0 - 120DEG  
 $\gamma$  Interval: 1.0DEG  
 Test System:EVERFINE GO-2000B\_V1 SYSTEM V2.0.362  
 Humidity:65.0%  
 Test Distance:9.200m [K=1.0000]  
 Remarks:

## LUMINANCE LIMITATION CURVES

Test:U:24.00V I:0.2355A P:5.652W PF:1.000 Freq:50.00Hz Lamp Flux:1.46352x70 lm		
NAME: P01-24V-5050-70-SPI-RGBW(4000K)-R	TYPE:	WEIGHT:
SPEC.:	DIM.:	SERIAL No.:
MFR.: EVERFINE	SUR.:1*0.014	Shielding Angle:



LUMINANCE cd/(m2)		
G (DEG)	C0/180	C90/270
85	1621	349
80	1513	592
75	1690	1064
70	2026	1578
65	2234	2034
60	2279	2286
55	2397	2484
50	2474	2613
45	2492	2674

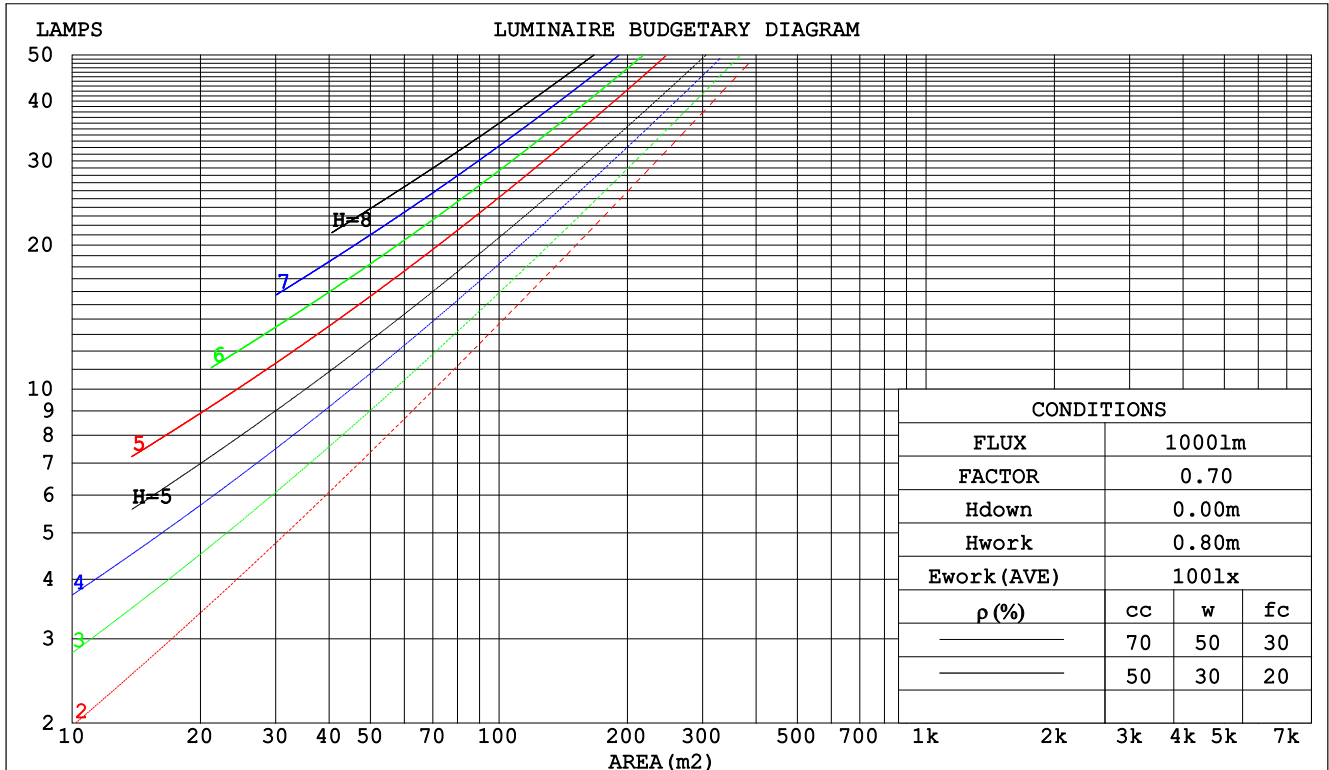
C Range: 0 - 360DEG  
C Interval: 30.0DEG  
Test Speed: HIGH  
Temperature:25.3DEG  
Operators:LPC  
Test Date:2021-10-20

$\gamma$  Range: 0 - 120DEG  
 $\gamma$  Interval: 1.0DEG  
Test System:EVERFINE GO-2000B\_V1 SYSTEM V2.0.362  
Humidity:65.0%  
Test Distance:9.200m [K=1.0000]  
Remarks:

CU AND LUMINAIRE BUDGETARY ESTIMATE DIAGRAM

Test:U:24.00V I:0.2355A P:5.652W PF:1.000 Freq:50.00Hz Lamp Flux:1.46352x70 lm		
NAME: P01-24V-5050-70-SPI-RGBW(4000K)-R	TYPE:	WEIGHT:
SPEC.:	DIM.:	SERIAL No.:
MFR.: EVERFINE	SUR.:1*0.014	Shielding Angle:

pcc	80%			70%			50%			30%			10%			0
pw	50%	30%	10%	50%	30%	10%	50%	30%	10%	50%	30%	10%	50%	30%	10%	0
pfc	20%			20%			20%			20%			20%			0
RCR	RCR:Room Cavity Ratio			Coefficients of Utilization(CU)												
0.0	1.19	1.19	1.19	1.16	1.16	1.16	1.10	1.10	1.10	1.05	1.05	1.05	1.01	1.01	1.01	.99
1.0	1.04	.00	.96	1.02	.98	.94	.97	.94	.91	.93	.90	.88	.89	.87	.85	.83
2.0	.91	.84	.79	.89	.83	.78	.85	.80	.76	.82	.78	.74	.79	.75	.72	.70
3.0	.80	.72	.66	.79	.71	.65	.75	.69	.64	.72	.67	.63	.70	.65	.61	.59
4.0	.71	.63	.56	.70	.62	.56	.67	.60	.55	.65	.59	.54	.62	.57	.53	.51
5.0	.64	.55	.48	.63	.54	.48	.60	.53	.47	.58	.52	.47	.56	.51	.46	.44
6.0	.58	.49	.42	.57	.48	.42	.55	.47	.42	.53	.46	.41	.51	.45	.41	.39
7.0	.52	.44	.38	.51	.43	.37	.50	.42	.37	.48	.42	.37	.47	.41	.36	.34
8.0	.48	.39	.34	.47	.39	.33	.46	.38	.33	.44	.38	.33	.43	.37	.33	.31
9.0	.44	.36	.30	.43	.35	.30	.42	.35	.30	.41	.34	.30	.40	.34	.30	.28
10.0	.41	.33	.28	.40	.32	.27	.39	.32	.27	.38	.32	.27	.37	.31	.27	.25



C Range: 0 - 360DEG  
 C Interval: 30.0DEG  
 Test Speed: HIGH  
 Temperature:25.3DEG  
 Operators:LPC  
 Test Date:2021-10-20

γ Range: 0 - 120DEG  
 γ Interval: 1.0DEG  
 Test System:EVERFINE GO-2000B\_V1 SYSTEM V2.0.362  
 Humidity:65.0%  
 Test Distance:9.200m [K=1.0000]  
 Remarks:

### WEC AND CCEC

Test:U:24.00V I:0.2355A P:5.652W PF:1.000 Freq:50.00Hz Lamp Flux:1.46352x70 lm		
NAME: P01-24V-5050-70-SPI-RGBW(4000K)-R	TYPE:	WEIGHT:
SPEC.:	DIM.:	SERIAL No.:
MFR.: EVERFINE	SUR.:1*0.014	Shielding Angle:

pcc	80%			70%			50%			30%			10%			0	
pw	50%	30%	10%	50%	30%	10%	50%	30%	10%	50%	30%	10%	50%	30%	10%	0	
pfc	20%			20%			20%			20%			20%			0	
RCR	RCR:Room Cavity Ratio						Wall Exitance Coefficients(WEC)										
0.0																	
1.0	.301	.171	.054	.293	.167	.053	.279	.160	.051	.267	.154	.049	.255	.148	.048		
2.0	.283	.155	.048	.276	.152	.047	.264	.147	.046	.253	.142	.044	.242	.137	.043		
3.0	.262	.140	.042	.257	.137	.041	.246	.133	.040	.235	.129	.040	.226	.125	.039		
4.0	.243	.126	.037	.238	.124	.037	.228	.121	.036	.219	.118	.035	.210	.114	.035		
5.0	.225	.115	.033	.220	.113	.033	.212	.110	.032	.204	.107	.032	.196	.105	.031		
6.0	.209	.105	.030	.205	.103	.030	.197	.101	.029	.190	.099	.029	.183	.096	.029		
7.0	.195	.096	.027	.191	.095	.027	.184	.093	.027	.178	.091	.027	.172	.089	.026		
8.0	.182	.089	.025	.179	.088	.025	.173	.086	.025	.167	.085	.024	.161	.083	.024		
9.0	.171	.083	.023	.168	.082	.023	.162	.080	.023	.157	.079	.023	.152	.077	.022		
10.0	.161	.077	.021	.158	.076	.021	.153	.075	.021	.148	.074	.021	.144	.072	.021		

pcc	80%			70%			50%			30%			10%			0
pw	50%	30%	10%	50%	30%	10%	50%	30%	10%	50%	30%	10%	50%	30%	10%	0
pfc	20%			20%			20%			20%			20%			0
RCR	RCR:Room Cavity Ratio			Ceiling Cavity Exitance Coefficients(CCEC)												
0.0	.201	.201	.201	.172	.172	.172	.117	.117	.117	.067	.067	.067	.022	.022	.022	
1.0	.190	.167	.146	.163	.143	.125	.111	.098	.087	.064	.057	.050	.021	.018	.016	
2.0	.182	.143	.110	.156	.123	.095	.107	.085	.066	.061	.049	.039	.020	.016	.013	
3.0	.174	.125	.086	.149	.108	.075	.102	.075	.052	.059	.044	.031	.019	.014	.010	
4.0	.166	.112	.070	.142	.096	.061	.098	.067	.043	.057	.039	.025	.018	.013	.008	
5.0	.159	.101	.059	.136	.087	.051	.094	.061	.036	.054	.036	.021	.018	.012	.007	
6.0	.151	.093	.051	.130	.080	.044	.090	.056	.031	.052	.033	.019	.017	.011	.006	
7.0	.145	.086	.045	.124	.074	.039	.086	.052	.028	.050	.031	.016	.016	.010	.005	
8.0	.138	.080	.040	.119	.069	.035	.082	.049	.025	.048	.029	.015	.016	.009	.005	
9.0	.132	.075	.036	.114	.065	.032	.079	.046	.023	.046	.027	.013	.015	.009	.004	
10.0	.127	.071	.034	.109	.061	.029	.076	.043	.021	.044	.026	.012	.014	.008	.004	

C Range: 0 - 360DEG  
C Interval: 30.0DEG  
Test Speed: HIGH  
Temperature:25.3DEG  
Operators:LPC  
Test Date:2021-10-20

γ Range: 0 - 120DEG  
γ Interval: 1.0DEG  
Test System:EVERFINE GO-2000B\_V1 SYSTEM V2.0.362  
Humidity:65.0%  
Test Distance:9.200m [K=1.0000]  
Remarks:

UGR(Unified Glare Rating) Table

Test:U:24.00V I:0.2355A P:5.652W PF:1.000 Freq:50.00Hz Lamp Flux:1.46352x70 lm											
NAME: P01-24V-5050-70-SPI-RGBW(4000K)-R					TYPE:			WEIGHT:			
SPEC.:					DIM.:			SERIAL No.:			
MFR.: EVERFINE					SUR.:1*0.014			Shielding Angle:			
ceiling/cavity	0.7	0.7	0.5	0.5	0.3	0.7	0.7	0.5	0.5	0.3	
walls	0.5	0.3	0.5	0.3	0.3	0.5	0.3	0.5	0.3	0.3	
working plane	0.2	0.2	0.2	0.2	0.2	0.2	0.2	0.2	0.2	0.2	
Room dimensions	Viewed crosswise					Viewed endwise					
x = 2H y = 2H	24.2	25.6	24.5	25.9	26.1	24.2	25.7	24.5	25.9	26.1	
	3H	25.6	26.9	25.9	27.2	27.5	25.3	26.7	25.6	26.9	27.2
	4H	26.1	27.4	26.4	27.6	27.9	25.6	26.8	25.9	27.1	27.4
	6H	26.4	27.6	26.7	27.9	28.2	25.6	26.8	26.0	27.1	27.4
	8H	26.5	27.7	26.9	28.0	28.3	25.6	26.8	25.9	27.1	27.4
	12H	26.6	27.7	27.0	28.0	28.4	25.5	26.7	25.9	27.0	27.3
4H	2H	24.8	26.1	25.1	26.4	26.6	24.8	26.1	25.1	26.4	26.7
	3H	26.4	27.5	26.8	27.9	28.2	26.2	27.3	26.5	27.6	27.9
	4H	27.1	28.1	27.5	28.4	28.8	26.5	27.6	26.9	27.9	28.3
	6H	27.5	28.4	27.9	28.8	29.2	26.7	27.6	27.1	28.0	28.4
	8H	27.7	28.5	28.1	28.9	29.3	26.7	27.6	27.1	27.9	28.4
	12H	27.8	28.6	28.2	29.0	29.4	26.7	27.5	27.1	27.9	28.3
8H	4H	27.3	28.2	27.7	28.5	29.0	26.8	27.7	27.3	28.1	28.5
	6H	27.9	28.6	28.4	29.1	29.5	27.2	27.9	27.6	28.3	28.7
	8H	28.2	28.8	28.7	29.2	29.7	27.2	27.9	27.7	28.3	28.8
	12H	28.4	28.9	28.9	29.4	29.9	27.3	27.8	27.8	28.3	28.8
12H	4H	27.3	28.1	27.7	28.5	28.9	26.9	27.6	27.3	28.0	28.5
	6H	28.0	28.6	28.4	29.0	29.5	27.2	27.9	27.7	28.3	28.8
	8H	28.3	28.8	28.8	29.3	29.8	27.3	27.9	27.8	28.4	28.9
Variations with the observer position at spacings:											
S = 1.0H	+ 0.2 / - 0.2					+ 0.2 / - 0.2					
1.5H	+ 0.2 / - 0.4					+ 0.2 / - 0.4					
2.0H	+ 0.2 / - 0.4					+ 0.2 / - 0.4					

CIE Pub.117, 102.4 lm Total Lamp Luminous Flux Correct (8log(F/F0) = -7.9)

C Range: 0 - 360DEG  
C Interval: 30.0DEG  
Test Speed: HIGH  
Temperature:25.3DEG  
Operators:LPC  
Test Date:2021-10-20

γ Range: 0 - 120DEG  
γ Interval: 1.0DEG  
Test System:EVERFINE GO-2000B\_V1 SYSTEM V2.0.362  
Humidity:65.0%  
Test Distance:9.200m [K=1.0000]  
Remarks:

### UTILIZATION FACTORS TABLE

Test:U:24.00V I:0.2355A P:5.652W PF:1.000 Freq:50.00Hz Lamp Flux:1.46352x70 lm		
NAME: P01-24V-5050-70-SPI-RGBW(4000K)-R	TYPE:	WEIGHT:
SPEC.:	DIM.:	SERIAL No.:
MFR.: EVERFINE	SUR.:1*0.014	Shielding Angle:

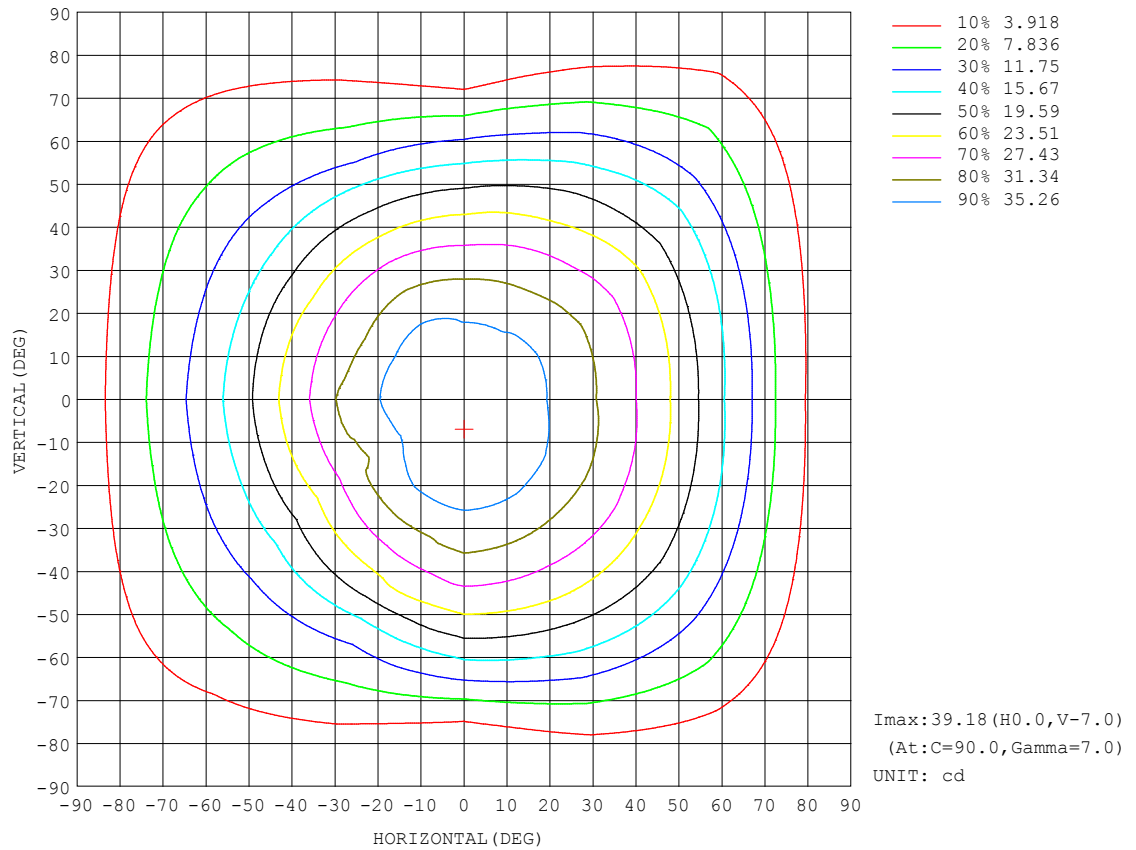
REFLECTANCE										
Ceiling	0.8	0.8	0.8	0.7	0.7	0.7	0.5	0.5	0.5	0
Walls	0.7	0.5	0.3	0.7	0.5	0.3	0.7	0.5	0.3	0
Working plane	0.2	0.2	0.2	0.2	0.2	0.2	0.2	0.2	0.2	0
ROOM INDEX	UTILIZATION FACTORS (PERCENT)    k(RI) × RCR = 5									
k = 0.60	59	47	40	58	47	40	57	46	40	34
0.80	69	57	50	67	57	50	66	56	49	43
1.00	77	66	59	76	65	59	73	67	58	51
1.25	84	74	67	82	73	66	80	71	65	58
1.50	89	79	72	87	78	72	84	76	71	63
2.00	95	87	81	93	86	80	90	83	78	70
2.50	99	92	86	97	90	85	93	87	83	74
3.00	102	96	90	100	94	89	96	91	87	78
4.00	106	101	96	104	99	95	99	95	92	83
5.00	109	104	100	106	102	98	101	98	95	85
ROOM INDEX	UF (total)									Direct
According to DIN EN 13032-2 2004										
Suspended										
SHRNM = 1.25										

C Range: 0 - 360DEG  
C Interval: 30.0DEG  
Test Speed: HIGH  
Temperature:25.3DEG  
Operators:LPC  
Test Date:2021-10-20

$\gamma$  Range: 0 - 120DEG  
 $\gamma$  Interval: 1.0DEG  
Test System:EVERFINE GO-2000B\_V1 SYSTEM V2.0.362  
Humidity:65.0%  
Test Distance:9.200m [K=1.0000]  
Remarks:

## ISOCANDELA DIAGRAM

Test:U:24.00V I:0.2355A P:5.652W PF:1.000 Freq:50.00Hz Lamp Flux:1.46352x70 lm		
NAME: P01-24V-5050-70-SPI-RGBW(4000K)-R	TYPE:	WEIGHT:
SPEC.:	DIM.:	SERIAL No.:
MFR.: EVERFINE	SUR.:1*0.014	Shielding Angle:

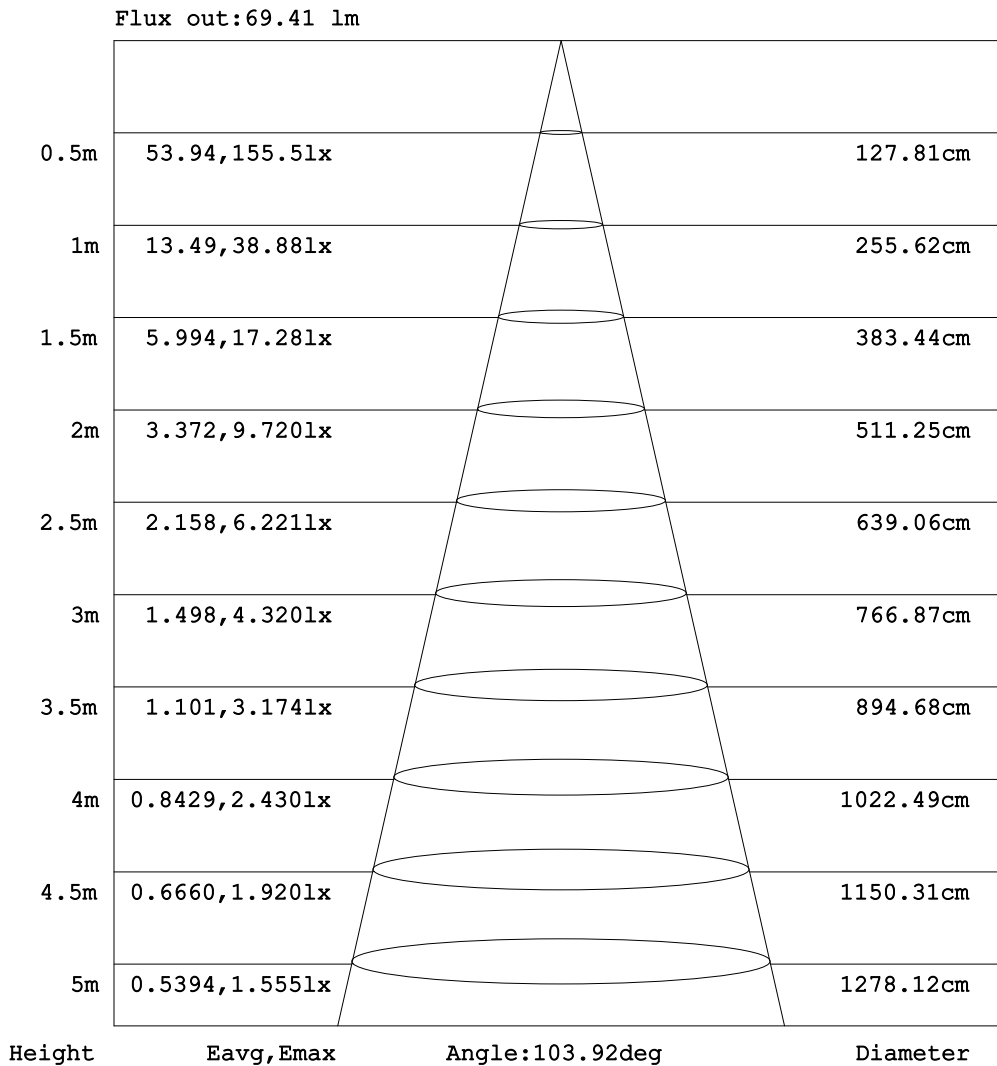


C Range: 0 - 360DEG  
C Interval: 30.0DEG  
Test Speed: HIGH  
Temperature: 25.3DEG  
Operators: LPC  
Test Date: 2021-10-20

γ Range: 0 - 120DEG  
γ Interval: 1.0DEG  
Test System: EVERFINE GO-2000B\_V1 SYSTEM V2.0.362  
Humidity: 65.0%  
Test Distance: 9.200m [K=1.0000]  
Remarks:

### AAI Figure

Test:U:24.00V I:0.2355A P:5.652W PF:1.000 Freq:50.00Hz Lamp Flux:1.46352x70 lm		
NAME: P01-24V-5050-70-SPI-RGBW(4000K)-R	TYPE:	WEIGHT:
SPEC.:	DIM.:	SERIAL No.:
MFR.: EVERFINE	SUR.:1*0.014	Shielding Angle:



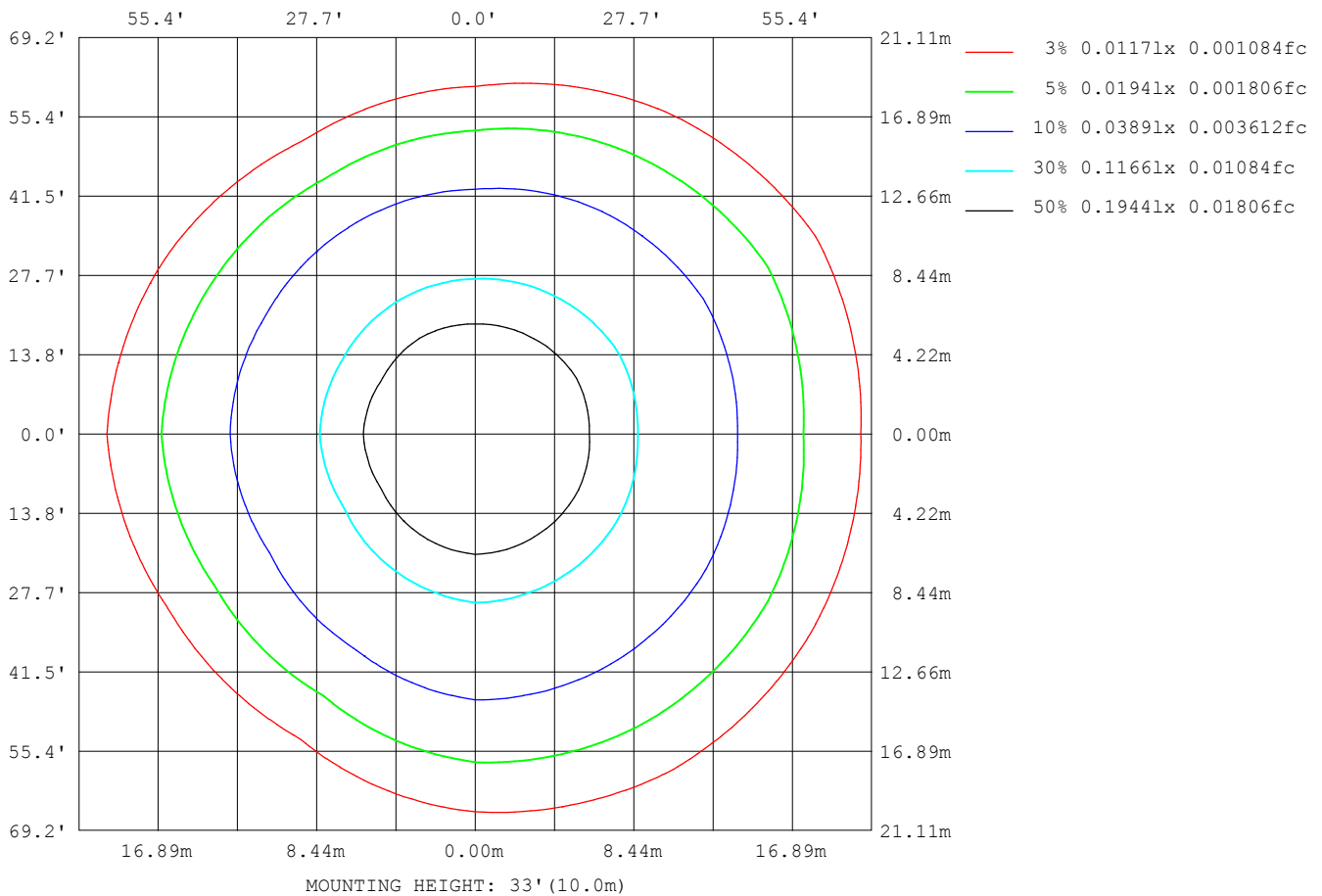
Note:The Curves indicate the illuminated area and the average illumination when the luminaire is at different distance.

C Range: 0 - 360DEG  
C Interval: 30.0DEG  
Test Speed: HIGH  
Temperature:25.3DEG  
Operators:LPC  
Test Date:2021-10-20

γ Range: 0 - 120DEG  
γ Interval: 1.0DEG  
Test System:EVERFINE GO-2000B\_V1 SYSTEM V2.0.362  
Humidity:65.0%  
Test Distance:9.200m [K=1.0000]  
Remarks:

### ISOLUX DIAGRAM

Test:U:24.00V I:0.2355A P:5.652W PF:1.000 Freq:50.00Hz Lamp Flux:1.46352x70 lm		
NAME: P01-24V-5050-70-SPI-RGBW(4000K)-R	TYPE:	WEIGHT:
SPEC.:	DIM.:	SERIAL No.:
MFR.: EVERFINE	SUR.:1*0.014	Shielding Angle:



C Range: 0 - 360DEG  
C Interval: 30.0DEG  
Test Speed: HIGH  
Temperature:25.3DEG  
Operators:LPC  
Test Date:2021-10-20

γ Range: 0 - 120DEG  
γ Interval: 1.0DEG  
Test System:EVERFINE GO-2000B\_V1 SYSTEM V2.0.362  
Humidity:65.0%  
Test Distance:9.200m [K=1.0000]  
Remarks:

## LED Avg.L Report

Test:U:24.00V I:0.2355A P:5.652W PF:1.000 Freq:50.00Hz Lamp Flux:1.46352x70 lm		
NAME: P01-24V-5050-70-SPI-RGBW(4000K)-R	TYPE:	WEIGHT:
SPEC.:	DIM.:	SERIAL No.:
MFR.: EVERFINE	SUR.:1*0.014	Shielding Angle:

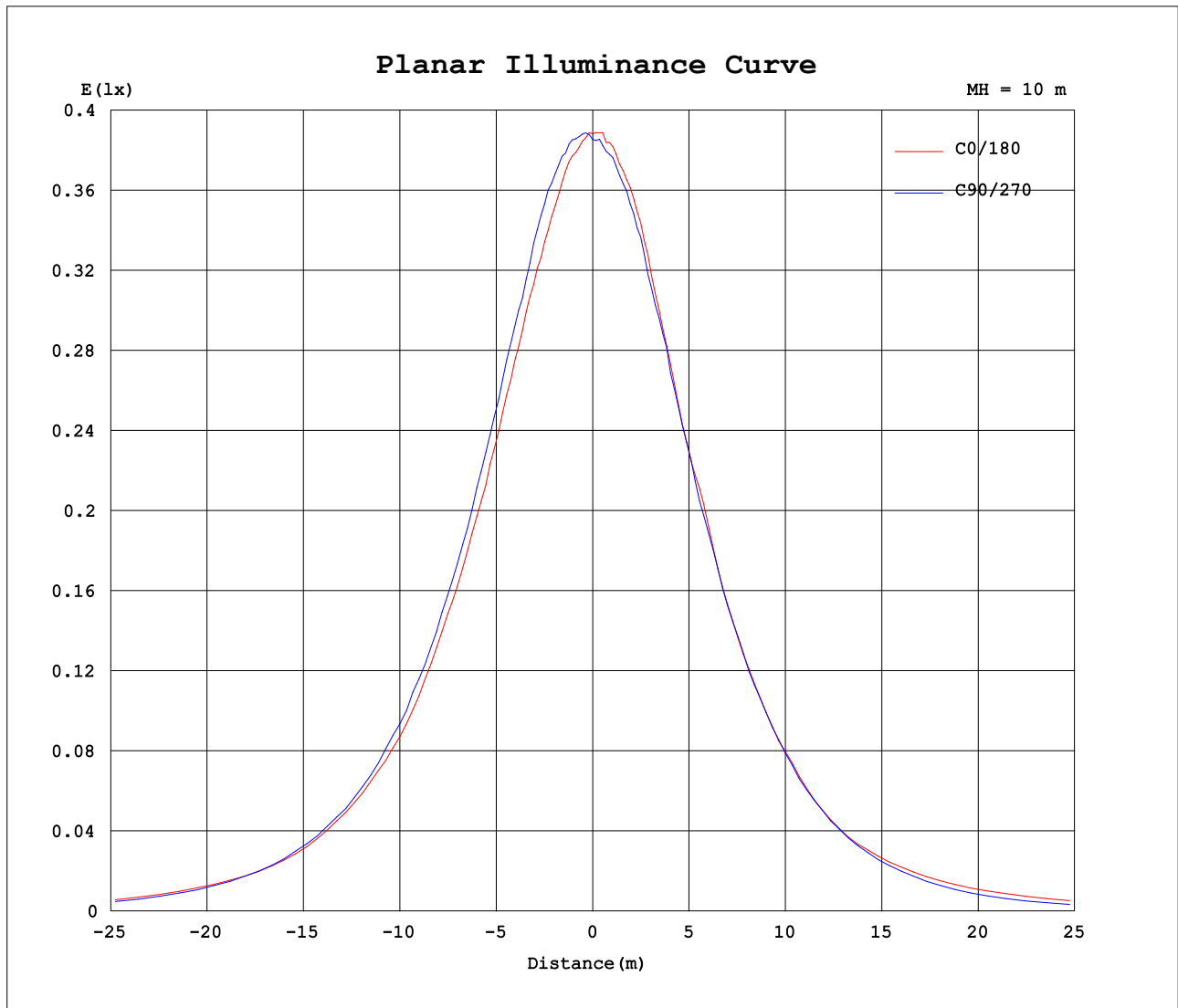
AvgL	cd/m2
L_0~180 (65) av	2098
L_0~180 (75) av	1864
L_0~180 (85) av	2164
L_90~270 (65) av	1726
L_90~270 (75) av	874
L_90~270 (85) av	280
L_45 (65) av	1943
L_45 (75) av	1733
L_45 (85) av	1553

Standard: GB/T 29293-2012

C Range: 0 - 360DEG  
C Interval: 30.0DEG  
Test Speed: HIGH  
Temperature:25.3DEG  
Operators:LPC  
Test Date:2021-10-20

γ Range: 0 - 120DEG  
γ Interval: 1.0DEG  
Test System:EVERFINE GO-2000B\_V1 SYSTEM V2.0.362  
Humidity:65.0%  
Test Distance:9.200m [K=1.0000]  
Remarks:

## Planar Illuminance Curve



C Range: 0 - 360DEG  
C Interval: 30.0DEG  
Test Speed: HIGH  
Temperature: 25.3DEG  
Operators: LPC  
Test Date: 2021-10-20

$\gamma$  Range: 0 - 120DEG  
 $\gamma$  Interval: 1.0DEG  
Test System: EVERFINE GO-2000B\_V1 SYSTEM V2.0.362  
Humidity: 65.0%  
Test Distance: 9.200m [K=1.0000]  
Remarks:

## LUMINOUS DISTRIBUTION INTENSITY DATA

Test:U:24.00V I:0.2355A P:5.652W PF:1.000 Freq:50.00Hz Lamp Flux:1.46352x70 lm		
NAME: P01-24V-5050-70-SPI-RGBW(4000K)-R	TYPE:	WEIGHT:
SPEC.:	DIM.:	SERIAL No.:
MFR.: EVERFINE	SUR.:1*0.014	Shielding Angle:

Table--1

UNIT: cd

C (DEG) γ (DEG)	0	30	60	90	120	150	180	210	240	270	300	330							
0	38.8	38.8	38.5	38.5	38.3	38.1	38.8	38.8	38.5	38.5	38.3	38.1							
5	38.3	38.7	39.0	39.0	38.7	38.1	38.8	38.6	38.0	38.2	38.1	38.1							
10	37.5	38.2	38.5	39.0	38.3	37.6	38.3	37.9	37.6	37.6	37.4	37.7							
15	36.2	37.1	37.8	38.6	38.0	36.0	37.2	36.9	36.7	36.4	36.4	36.8							
20	34.9	35.9	37.2	36.9	36.4	33.9	35.0	34.8	35.3	34.7	34.7	35.2							
25	33.5	34.4	35.3	35.7	34.4	31.6	32.6	32.4	33.1	32.6	32.9	33.8							
30	31.6	32.8	33.2	33.9	32.0	30.2	31.3	29.8	30.7	30.4	30.8	32.1							
35	29.6	30.9	31.1	31.7	29.3	26.6	27.9	27.6	28.0	27.8	28.5	29.9							
40	27.5	28.6	28.9	29.3	26.3	23.7	25.3	24.3	24.6	25.1	26.3	28.0							
45	24.7	26.2	26.4	26.5	23.2	20.7	22.6	21.5	21.3	22.3	23.7	25.6							
50	22.3	23.0	23.5	23.5	19.7	17.4	19.0	18.3	18.4	19.0	21.0	23.0							
55	19.3	20.5	20.3	19.9	15.6	14.5	16.2	14.9	14.6	15.5	17.9	19.9							
60	16.0	17.5	17.1	16.0	12.1	12.3	13.8	12.5	11.0	12.0	14.9	17.4							
65	13.2	13.8	13.7	12.0	9.69	9.87	11.6	10.1	8.36	8.38	11.9	14.3							
70	9.70	10.7	10.1	7.56	7.24	7.74	9.45	7.97	6.37	5.05	8.86	10.8							
75	6.12	7.62	6.65	3.85	4.92	5.48	7.38	5.92	4.34	2.48	5.96	8.16							
80	3.68	4.48	3.70	1.44	2.92	3.47	5.25	3.93	2.66	0.95	3.41	5.37							
85	1.98	2.17	1.59	0.43	1.37	1.75	3.30	2.17	1.28	0.26	1.55	2.91							
90	0.85	0.90	0.61	0.32	0.62	0.69	1.53	0.95	0.51	0.15	0.55	1.34							
95	0.41	0.47	0.50	0.33	0.53	0.51	0.47	0.42	0.37	0.15	0.36	0.53							
100	0.39	0.48	0.50	0.38	0.53	0.53	0.28	0.37	0.38	0.19	0.36	0.34							
105	0.39	0.50	0.47	0.42	0.48	0.55	0.31	0.37	0.39	0.24	0.36	0.34							
110	0.40	0.53	0.52	0.43	0.53	0.56	0.33	0.38	0.46	0.24	0.45	0.34							
115	0.44	0.54	0.55	0.45	0.55	0.56	0.36	0.41	0.49	0.28	0.39	0.35							
120	0.48	0.54	0.52	0.48	0.56	0.56	0.37	0.44	0.50	0.30	0.33	0.36							
125	0.00	0.00	0.00	0.00	0.00	0.00	0.00	0.00	0.00	0.00	0.00	0.00							
130	0.00	0.00	0.00	0.00	0.00	0.00	0.00	0.00	0.00	0.00	0.00	0.00							
135	0.00	0.00	0.00	0.00	0.00	0.00	0.00	0.00	0.00	0.00	0.00	0.00							
140	0.00	0.00	0.00	0.00	0.00	0.00	0.00	0.00	0.00	0.00	0.00	0.00							
145	0.00	0.00	0.00	0.00	0.00	0.00	0.00	0.00	0.00	0.00	0.00	0.00							
150	0.00	0.00	0.00	0.00	0.00	0.00	0.00	0.00	0.00	0.00	0.00	0.00							
155	0.00	0.00	0.00	0.00	0.00	0.00	0.00	0.00	0.00	0.00	0.00	0.00							
160	0.00	0.00	0.00	0.00	0.00	0.00	0.00	0.00	0.00	0.00	0.00	0.00							
165	0.00	0.00	0.00	0.00	0.00	0.00	0.00	0.00	0.00	0.00	0.00	0.00							
170	0.00	0.00	0.00	0.00	0.00	0.00	0.00	0.00	0.00	0.00	0.00	0.00							
175	0.00	0.00	0.00	0.00	0.00	0.00	0.00	0.00	0.00	0.00	0.00	0.00							
180	0.00	0.00	0.00	0.00	0.00	0.00	0.00	0.00	0.00	0.00	0.00	0.00							

C Range: 0 - 360DEG  
C Interval: 30.0DEG  
Test Speed: HIGH  
Temperature:25.3DEG  
Operators:LPC  
Test Date:2021-10-20

γ Range: 0 - 120DEG  
γ Interval: 1.0DEG  
Test System:EVERFINE GO-2000B\_V1 SYSTEM V2.0.362  
Humidity:65.0%  
Test Distance:9.200m [K=1.0000]  
Remarks: