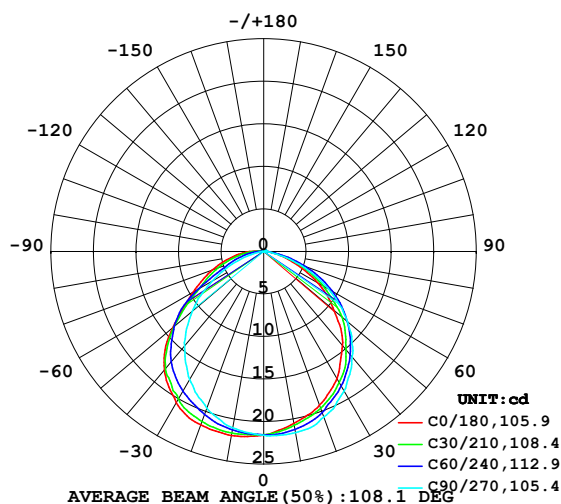


## LUMINAIRE PHOTOMETRIC TEST REPORT

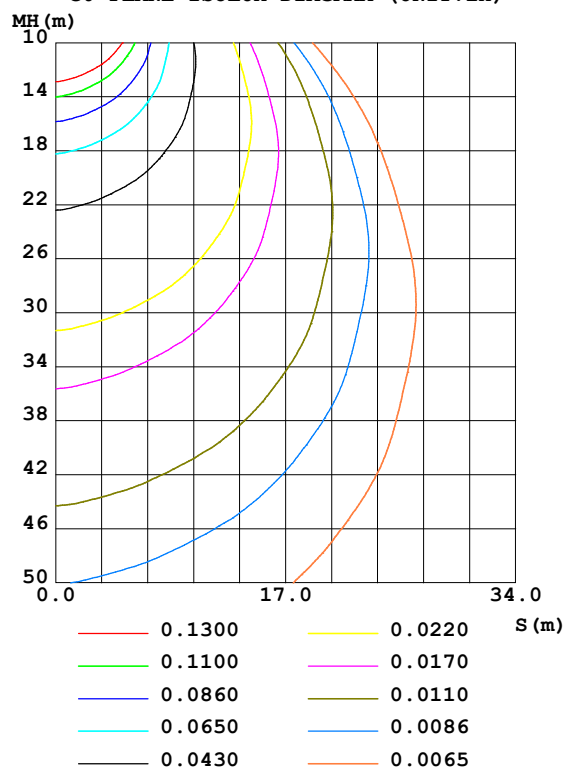
Test:U:24.00V I:0.2339A P:5.614W PF:1.000 Freq:50.00Hz Lamp Flux:0.872712x70 lm					
NAME: P01-24V-5050-70-SPI3-RGB-B			TYPE:		WEIGHT:
SPEC.:			DIM.:		SERIAL No.:
MFR.: EVERFINE			SUR.:1*0.014		Shielding Angle:

DATA OF LAMP		PHOTOMETRIC DATA				Eff: 10.88 lm/W
MODEL	5050	I <sub>max</sub> (cd)	22.07	S/MH (C0/180)	1.39	
NOMINAL POWER (W)	12	LOR (%)	100.0	S/MH (C90/270)	1.21	
RATED VOLTAGE (V)	24	TOTAL FLUX (lm)	61.090	η UP, DN (C0-180)	0.8, 49.8	
NOMINAL FLUX (lm)	0.872712	CIE CLASS	DIRECT	η UP, DN (C180-360)	0.7, 48.7	
LAMPS INSIDE	70	η up (%)	1.4	CIBSE SHR NOM	1.50	
TEST VOLTAGE (V)	24	η down (%)	98.6	CIBSE SHR MAX	1.50	

LUMINOUS INTENSITY DISTRIBUTION DIAGRAM



C0 PLANE ISOLUX DIAGRAM (UNIT:lx)



C Range: 0 - 360DEG  
 C Interval: 30.0DEG  
 Test Speed: HIGH  
 Temperature: 25.3DEG  
 Operators: LPC  
 Test Date: 2021-10-19

γ Range: 0 - 120DEG  
 γ Interval: 1.0DEG  
 Test System: EVERFINE GO-2000B\_V1 SYSTEM V2.0.362  
 Humidity: 65.0%  
 Test Distance: 9.200m [K=1.0000]  
 Remarks:

## ZONAL FLUX DIAGRAM

## ZONAL FLUX DIAGRAM:

$\gamma$	C0	C45	C90	C135	C180	C225	C270	C315	$\gamma$	$\Phi$ zone	$\Phi$ total	%lum, lamp
10	20.51	21.01	21.63	21.98	21.96	21.48	21.05	20.63	0- 10	2.045	2.045	3.35,3.35
20	19.23	19.89	20.70	21.78	21.68	20.82	19.58	19.14	10- 20	5.906	7.951	13,13
30	17.25	18.03	18.95	20.60	20.54	19.52	17.40	17.15	20- 30	9.053	17.00	27.8,27.8
40	14.42	15.44	16.20	18.77	18.14	17.44	14.50	14.65	30- 40	11.01	28.02	45.9,45.9
50	10.84	12.43	12.89	15.34	13.97	13.76	10.97	11.57	40- 50	11.34	39.36	64.4,64.4
60	7.311	8.664	8.790	10.03	9.590	8.833	6.999	7.888	50- 60	9.646	49.01	80.2,80.2
70	3.636	4.760	4.464	5.616	6.455	5.076	3.320	4.362	60- 70	6.539	55.55	90.9,90.9
80	1.218	1.486	0.8624	2.922	3.712	2.586	0.6602	1.412	70- 80	3.455	59.00	96.6,96.6
90	0.2867	0.3067	0.1810	0.9497	1.486	0.8295	0.0754	0.2514	80- 90	1.215	60.22	98.6,98.6
100	0.2412	0.2865	0.2061	0.3015	0.2810	0.2213	0.0804	0.2086	90-100	0.3831	60.60	99.2,99.2
110	0.2412	0.2865	0.2412	0.2864	0.1658	0.2312	0.1206	0.2136	100-110	0.2450	60.84	99.6,99.6
120	0.2714	0.2915	0.2714	0.2865	0.1658	0.2287	0.1458	0.2136	110-120	0.2339	61.08	100,100
130	0	0	0	0	0	0	0	0	120-130	0.0114	61.09	100,100
140	0	0	0	0	0	0	0	0	130-140	0	61.09	100,100
150	0	0	0	0	0	0	0	0	140-150	0	61.09	100,100
160	0	0	0	0	0	0	0	0	150-160	0	61.09	100,100
170	0	0	0	0	0	0	0	0	160-170	0	61.09	100,100
180	0	0	0	0	0	0	0	0	170-180	0	61.09	100,100
DEG	LUMINOUS INTENSITY:cd									UNIT:lm		

Conical surface Flux(90deg): 33.773 lm

%lum = 55.3%

%lamp = 55.3%

Conical surface Flux(120deg): 49.007 lm

%lum = 80.2%

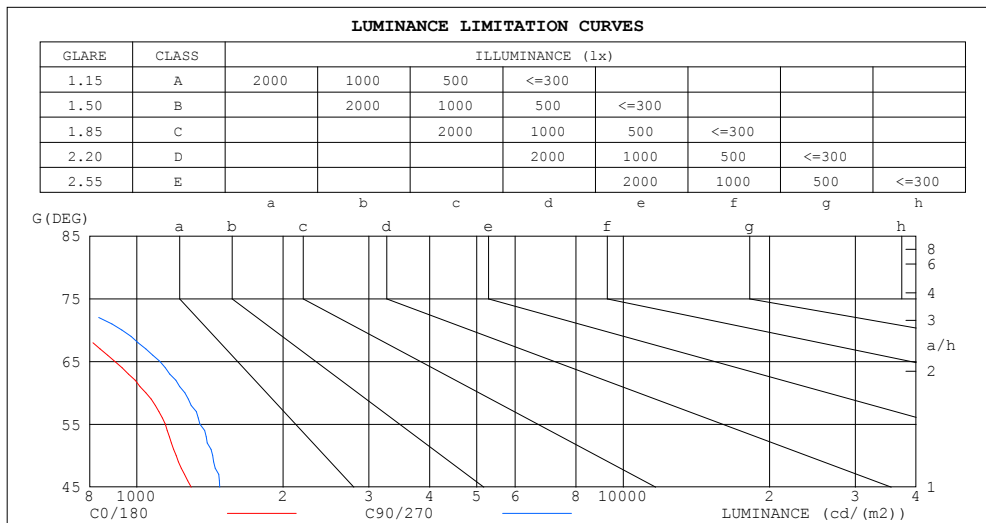
%lamp = 80.2%

C Range: 0 - 360DEG  
 C Interval: 30.0DEG  
 Test Speed: HIGH  
 Temperature:25.3DEG  
 Operators:LPC  
 Test Date:2021-10-19

$\gamma$  Range: 0 - 120DEG  
 $\gamma$  Interval: 1.0DEG  
 Test System:EVERFINE GO-2000B\_V1 SYSTEM V2.0.362  
 Humidity:65.0%  
 Test Distance:9.200m [K=1.0000]  
 Remarks:

## LUMINANCE LIMITATION CURVES

Test:U:24.00V I:0.2339A P:5.614W PF:1.000 Freq:50.00Hz Lamp Flux:0.872712x70 lm		
NAME: P01-24V-5050-70-SPI3-RGB-B	TYPE:	WEIGHT:
SPEC.:	DIM.:	SERIAL No.:
MFR.: EVERFINE	SUR.:1*0.014	Shielding Angle:



LUMINANCE cd/(m2)		
G (DEG)	C0/180	C90/270
85	462	177
80	501	355
75	625	679
70	759	932
65	901	1115
60	1044	1256
55	1144	1348
50	1205	1433
45	1295	1481

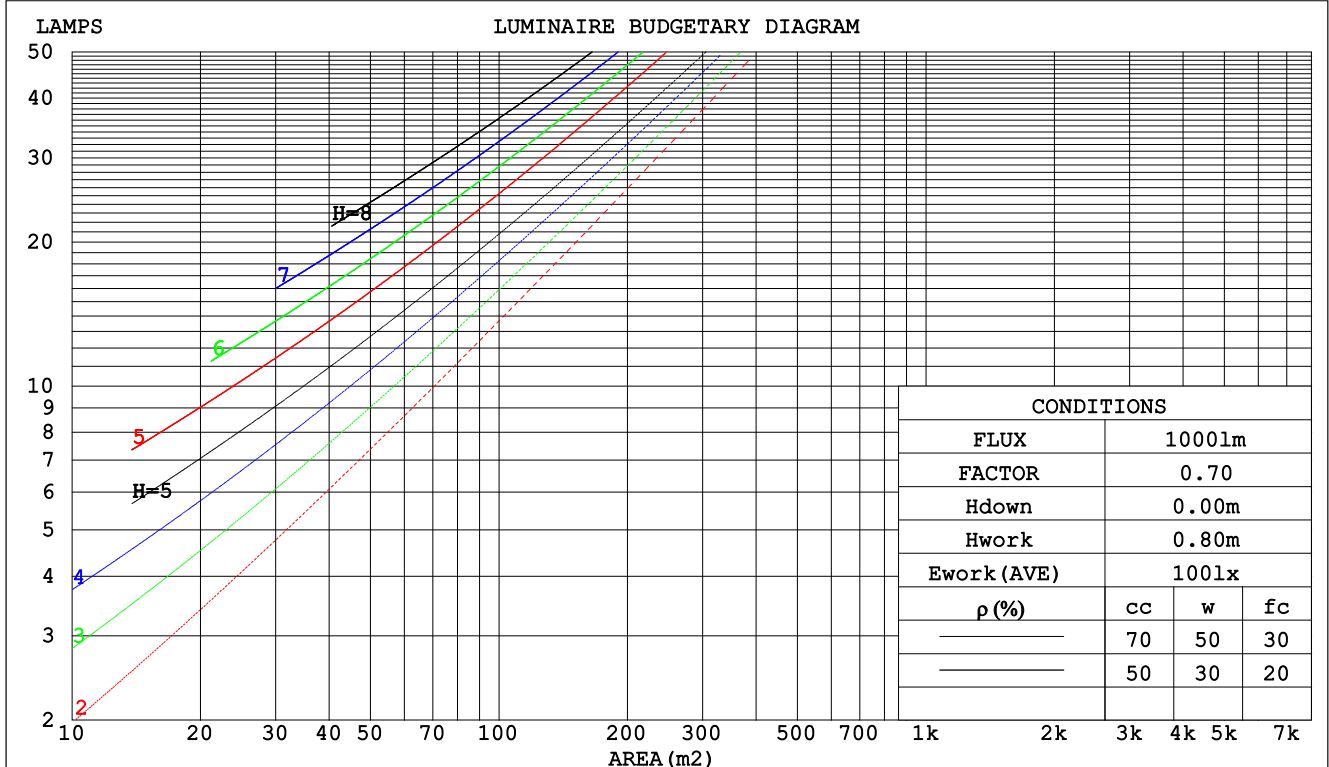
C Range: 0 - 360DEG  
C Interval: 30.0DEG  
Test Speed: HIGH  
Temperature:25.3DEG  
Operators:LPC  
Test Date:2021-10-19

γ Range: 0 - 120DEG  
γ Interval: 1.0DEG  
Test System:EVERFINE GO-2000B\_V1 SYSTEM V2.0.362  
Humidity:65.0%  
Test Distance:9.200m [K=1.0000]  
Remarks:

### CU AND LUMINAIRE BUDGETARY ESTIMATE DIAGRAM

Test:U:24.00V I:0.2339A P:5.614W PF:1.000 Freq:50.00Hz Lamp Flux:0.872712x70 lm		
NAME: P01-24V-5050-70-SPI3-RGB-B	TYPE:	WEIGHT:
SPEC.:	DIM.:	SERIAL No.:
MFR.: EVERFINE	SUR.:1*0.014	Shielding Angle:

pcc	80%			70%			50%			30%			10%			0
pw	50%	30%	10%	50%	30%	10%	50%	30%	10%	50%	30%	10%	50%	30%	10%	0
pfc	20%			20%			20%			20%			20%			0
RCR	RCR:Room Cavity Ratio						Coefficients of Utilization(CU)									
0.0	1.19	1.19	1.19	1.16	1.16	1.16	1.10	1.10	1.10	1.05	1.05	1.05	1.01	1.01	1.01	.99
1.0	1.04	.00	.96	1.02	.98	.94	.97	.94	.91	.93	.90	.88	.89	.87	.85	.83
2.0	.91	.84	.79	.89	.83	.78	.85	.80	.76	.82	.78	.74	.79	.75	.72	.70
3.0	.80	.72	.66	.78	.71	.65	.75	.69	.64	.72	.67	.62	.70	.65	.61	.59
4.0	.71	.63	.56	.70	.62	.55	.67	.60	.55	.65	.59	.54	.62	.57	.53	.51
5.0	.64	.55	.48	.62	.54	.48	.60	.53	.47	.58	.52	.47	.56	.50	.46	.44
6.0	.57	.48	.42	.56	.48	.42	.54	.47	.41	.53	.46	.41	.51	.45	.40	.38
7.0	.52	.43	.37	.51	.43	.37	.49	.42	.37	.48	.41	.36	.46	.40	.36	.34
8.0	.47	.39	.33	.47	.39	.33	.45	.38	.33	.44	.37	.32	.43	.37	.32	.30
9.0	.44	.35	.30	.43	.35	.30	.42	.34	.30	.40	.34	.29	.39	.33	.29	.27
10.0	.40	.32	.27	.40	.32	.27	.38	.32	.27	.37	.31	.27	.36	.31	.26	.25



C Range: 0 - 360DEG  
 C Interval: 30.0DEG  
 Test Speed: HIGH  
 Temperature:25.3DEG  
 Operators:LPC  
 Test Date:2021-10-19

γ Range: 0 - 120DEG  
 γ Interval: 1.0DEG  
 Test System:EVERFINE GO-2000B\_V1 SYSTEM V2.0.362  
 Humidity:65.0%  
 Test Distance:9.200m [K=1.0000]  
 Remarks:

### WEC AND CCEC

Test:U:24.00V I:0.2339A P:5.614W PF:1.000 Freq:50.00Hz Lamp Flux:0.872712x70 lm					
NAME: P01-24V-5050-70-SPI3-RGB-B			TYPE:		WEIGHT:
SPEC.:			DIM.:		SERIAL No.:
MFR.: EVERFINE			SUR.:1*0.014		Shielding Angle:

pcc	80%			70%			50%			30%			10%			0
pw	50%	30%	10%	50%	30%	10%	50%	30%	10%	50%	30%	10%	50%	30%	10%	0
pfc	20%			20%			20%			20%			20%			0
RCR	RCR:Room Cavity Ratio						Wall Exitance Coefficients(WEC)									
0.0																
1.0	.300	.171	.054	.293	.167	.053	.279	.160	.051	.266	.153	.049	.254	.147	.047	
2.0	.283	.155	.048	.276	.152	.047	.264	.147	.046	.252	.142	.044	.242	.137	.043	
3.0	.263	.140	.042	.257	.138	.041	.246	.133	.040	.236	.129	.040	.226	.125	.039	
4.0	.243	.126	.037	.238	.125	.037	.228	.121	.036	.219	.118	.036	.211	.115	.035	
5.0	.226	.115	.033	.221	.113	.033	.212	.111	.033	.204	.108	.032	.197	.105	.032	
6.0	.210	.105	.030	.206	.104	.030	.198	.101	.030	.191	.099	.029	.184	.097	.029	
7.0	.196	.097	.027	.192	.096	.027	.185	.094	.027	.179	.092	.027	.172	.090	.026	
8.0	.183	.089	.025	.180	.089	.025	.174	.087	.025	.168	.085	.024	.162	.083	.024	
9.0	.172	.083	.023	.169	.082	.023	.163	.081	.023	.158	.079	.023	.153	.078	.022	
10.0	.162	.078	.022	.159	.077	.021	.154	.075	.021	.149	.074	.021	.145	.073	.021	

pcc	80%			70%			50%			30%			10%			0
pw	50%	30%	10%	50%	30%	10%	50%	30%	10%	50%	30%	10%	50%	30%	10%	0
pfc	20%			20%			20%			20%			20%			0
RCR	RCR:Room Cavity Ratio						Ceiling Cavity Exitance Coefficients(CCEC)									
0.0	.201	.201	.201	.172	.172	.172	.117	.117	.117	.067	.067	.067	.022	.022	.022	
1.0	.191	.167	.146	.163	.144	.126	.112	.099	.087	.064	.057	.051	.021	.018	.016	
2.0	.182	.143	.110	.156	.123	.095	.107	.085	.066	.062	.050	.039	.020	.016	.013	
3.0	.174	.125	.086	.149	.108	.075	.103	.075	.053	.059	.044	.031	.019	.014	.010	
4.0	.167	.112	.070	.143	.097	.061	.098	.067	.043	.057	.040	.025	.018	.013	.008	
5.0	.159	.102	.059	.137	.088	.051	.094	.061	.036	.055	.036	.022	.018	.012	.007	
6.0	.152	.093	.051	.131	.081	.044	.090	.057	.031	.052	.033	.019	.017	.011	.006	
7.0	.145	.086	.045	.125	.075	.039	.086	.052	.028	.050	.031	.017	.016	.010	.005	
8.0	.139	.081	.040	.120	.070	.035	.083	.049	.025	.048	.029	.015	.016	.009	.005	
9.0	.133	.076	.037	.115	.066	.032	.080	.046	.023	.046	.027	.014	.015	.009	.004	
10.0	.128	.071	.034	.110	.062	.030	.076	.044	.021	.045	.026	.013	.014	.008	.004	

C Range: 0 - 360DEG  
C Interval: 30.0DEG  
Test Speed: HIGH  
Temperature:25.3DEG  
Operators:LPC  
Test Date:2021-10-19

γ Range: 0 - 120DEG  
γ Interval: 1.0DEG  
Test System:EVERFINE GO-2000B\_V1 SYSTEM V2.0.362  
Humidity:65.0%  
Test Distance:9.200m [K=1.0000]  
Remarks:

UGR(Unified Glare Rating) Table

Test:U:24.00V I:0.2339A P:5.614W PF:1.000 Freq:50.00Hz Lamp Flux:0.872712x70 lm											
NAME: P01-24V-5050-70-SPI3-RGB-B						TYPE:		WEIGHT:			
SPEC.:						DIM.:		SERIAL No.:			
MFR.: EVERFINE						SUR.:1*0.014		Shielding Angle:			
ceiling/cavity	0.7	0.7	0.5	0.5	0.3	0.7	0.7	0.5	0.5	0.3	
walls	0.5	0.3	0.5	0.3	0.3	0.5	0.3	0.5	0.3	0.3	
working plane	0.2	0.2	0.2	0.2	0.2	0.2	0.2	0.2	0.2	0.2	
Room dimensions		Viewed crosswise					Viewed endwise				
x = 2H y = 2H		22.7	24.2	23.0	24.4	24.6	23.5	25.0	23.8	25.2	25.5
	3H	23.7	25.0	24.0	25.3	25.5	24.7	26.1	25.0	26.3	26.6
	4H	24.0	25.2	24.3	25.5	25.8	25.0	26.3	25.3	26.6	26.8
	6H	24.1	25.3	24.5	25.6	25.9	25.0	26.3	25.4	26.6	26.9
	8H	24.1	25.3	24.5	25.6	25.9	25.0	26.2	25.4	26.5	26.8
	12H	24.1	25.3	24.5	25.6	25.9	25.0	26.1	25.4	26.4	26.8
4H	2H	23.3	24.6	23.7	24.9	25.2	24.0	25.3	24.4	25.6	25.9
	3H	24.5	25.6	24.8	25.9	26.2	25.4	26.5	25.8	26.8	27.2
	4H	24.8	25.9	25.2	26.2	26.6	25.8	26.8	26.2	27.2	27.5
	6H	25.1	26.0	25.5	26.4	26.8	26.0	26.9	26.4	27.2	27.6
	8H	25.1	26.0	25.6	26.4	26.8	26.0	26.8	26.4	27.2	27.6
	12H	25.2	26.0	25.6	26.4	26.8	25.9	26.7	26.4	27.1	27.6
8H	4H	25.1	25.9	25.5	26.3	26.7	25.9	26.8	26.4	27.2	27.6
	6H	25.4	26.1	25.9	26.5	27.0	26.2	26.9	26.7	27.3	27.8
	8H	25.5	26.1	26.0	26.6	27.1	26.2	26.9	26.7	27.3	27.8
	12H	25.6	26.1	26.1	26.6	27.1	26.3	26.8	26.8	27.3	27.8
12H	4H	25.1	25.8	25.5	26.2	26.7	25.9	26.7	26.4	27.1	27.5
	6H	25.4	26.0	25.9	26.5	27.0	26.2	26.8	26.7	27.3	27.8
	8H	25.6	26.1	26.1	26.6	27.1	26.3	26.8	26.8	27.3	27.8
Variations with the observer position at spacings:											
S = 1.0H	+ 0.3 / - 0.3					+ 0.2 / - 0.3					
1.5H	+ 0.2 / - 0.5					+ 0.3 / - 0.4					
2.0H	+ 0.3 / - 0.6					+ 0.3 / - 0.5					

CIE Pub.117, 61.09 lm Total Lamp Luminous Flux Correct (8log(F/F0) = -9.7)

C Range: 0 - 360DEG  
C Interval: 30.0DEG  
Test Speed: HIGH  
Temperature:25.3DEG  
Operators:LPC  
Test Date:2021-10-19

γ Range: 0 - 120DEG  
γ Interval: 1.0DEG  
Test System:EVERFINE GO-2000B\_V1 SYSTEM V2.0.362  
Humidity:65.0%  
Test Distance:9.200m [K=1.0000]  
Remarks:

### UTILIZATION FACTORS TABLE

Test:U:24.00V I:0.2339A P:5.614W PF:1.000 Freq:50.00Hz Lamp Flux:0.872712x70 lm		
NAME: P01-24V-5050-70-SPI3-RGB-B	TYPE:	WEIGHT:
SPEC.:	DIM.:	SERIAL No.:
MFR.: EVERFINE	SUR.:1*0.014	Shielding Angle:

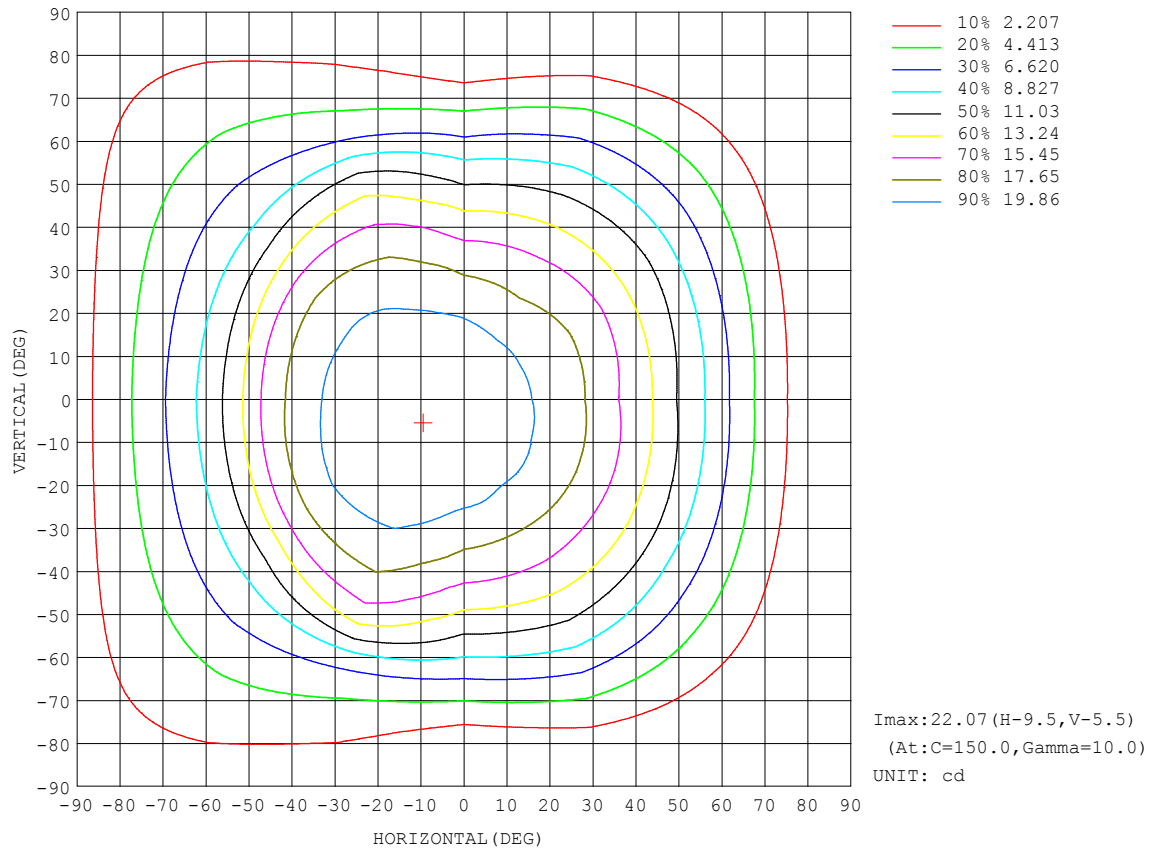
REFLECTANCE										
Ceiling	0.8	0.8	0.8	0.7	0.7	0.7	0.5	0.5	0.5	0
Walls	0.7	0.5	0.3	0.7	0.5	0.3	0.7	0.5	0.3	0
Working plane	0.2	0.2	0.2	0.2	0.2	0.2	0.2	0.2	0.2	0
ROOM INDEX	UTILIZATION FACTORS (PERCENT)    k(RI) × RCR = 5									
k = 0.60	58	46	40	57	46	39	56	46	39	33
0.80	68	57	49	67	56	49	65	55	49	42
1.00	77	66	59	75	65	58	73	66	58	51
1.25	84	73	66	82	73	66	79	71	65	58
1.50	89	79	72	87	78	72	84	76	70	63
2.00	95	87	81	93	86	80	90	83	78	70
2.50	99	91	86	97	90	85	93	87	83	74
3.00	102	96	90	100	94	89	96	91	87	78
4.00	106	101	96	104	99	95	99	95	92	83
5.00	108	104	100	106	102	98	101	98	95	85
ROOM INDEX	UF (total)									Direct
According to DIN EN 13032-2 2004										
Suspended										
SHRNM = 1.25										

C Range: 0 - 360DEG  
C Interval: 30.0DEG  
Test Speed: HIGH  
Temperature:25.3DEG  
Operators:LPC  
Test Date:2021-10-19

$\gamma$  Range: 0 - 120DEG  
 $\gamma$  Interval: 1.0DEG  
Test System:EVERFINE GO-2000B\_V1 SYSTEM V2.0.362  
Humidity:65.0%  
Test Distance:9.200m [K=1.0000]  
Remarks:

# ISOCANDELA DIAGRAM

Test:U:24.00V I:0.2339A P:5.614W PF:1.000 Freq:50.00Hz Lamp Flux:0.872712x70 lm		
NAME: P01-24V-5050-70-SPI3-RGB-B	TYPE:	WEIGHT:
SPEC.:	DIM.:	SERIAL No.:
MFR.: EVERFINE	SUR.:1*0.014	Shielding Angle:



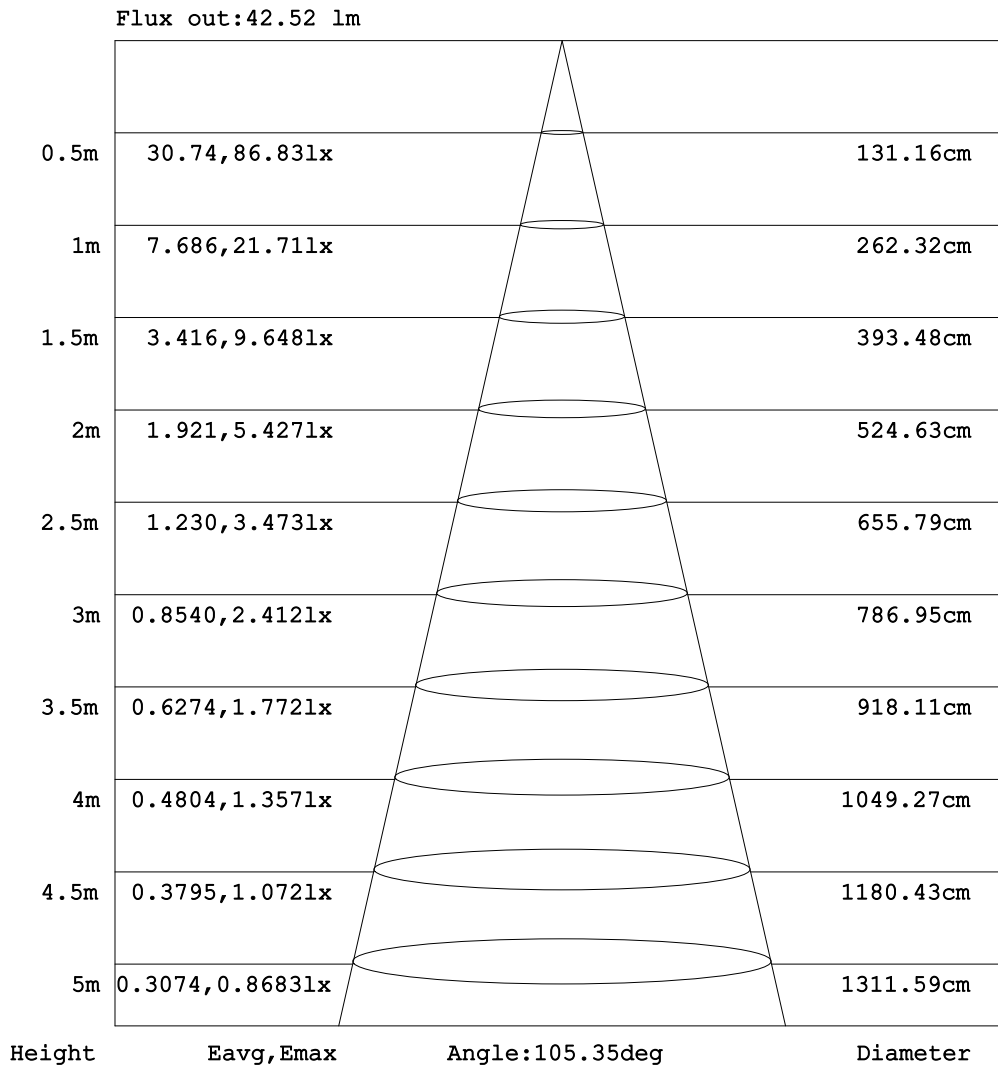
C Range: 0 - 360DEG  
C Interval: 30.0DEG  
Test Speed: HIGH  
Temperature:25.3DEG  
Operators:LPC  
Test Date:2021-10-19

γ Range: 0 - 120DEG  
γ Interval: 1.0DEG  
Test System:EVERFINE GO-2000B\_V1 SYSTEM V2.0.362  
Humidity:65.0%  
Test Distance:9.200m [K=1.0000]  
Remarks:



### AAI Figure

Test:U:24.00V I:0.2339A P:5.614W PF:1.000 Freq:50.00Hz Lamp Flux:0.872712x70 lm		
NAME: P01-24V-5050-70-SPI3-RGB-B	TYPE:	WEIGHT:
SPEC.:	DIM.:	SERIAL No.:
MFR.: EVERFINE	SUR.:1*0.014	Shielding Angle:



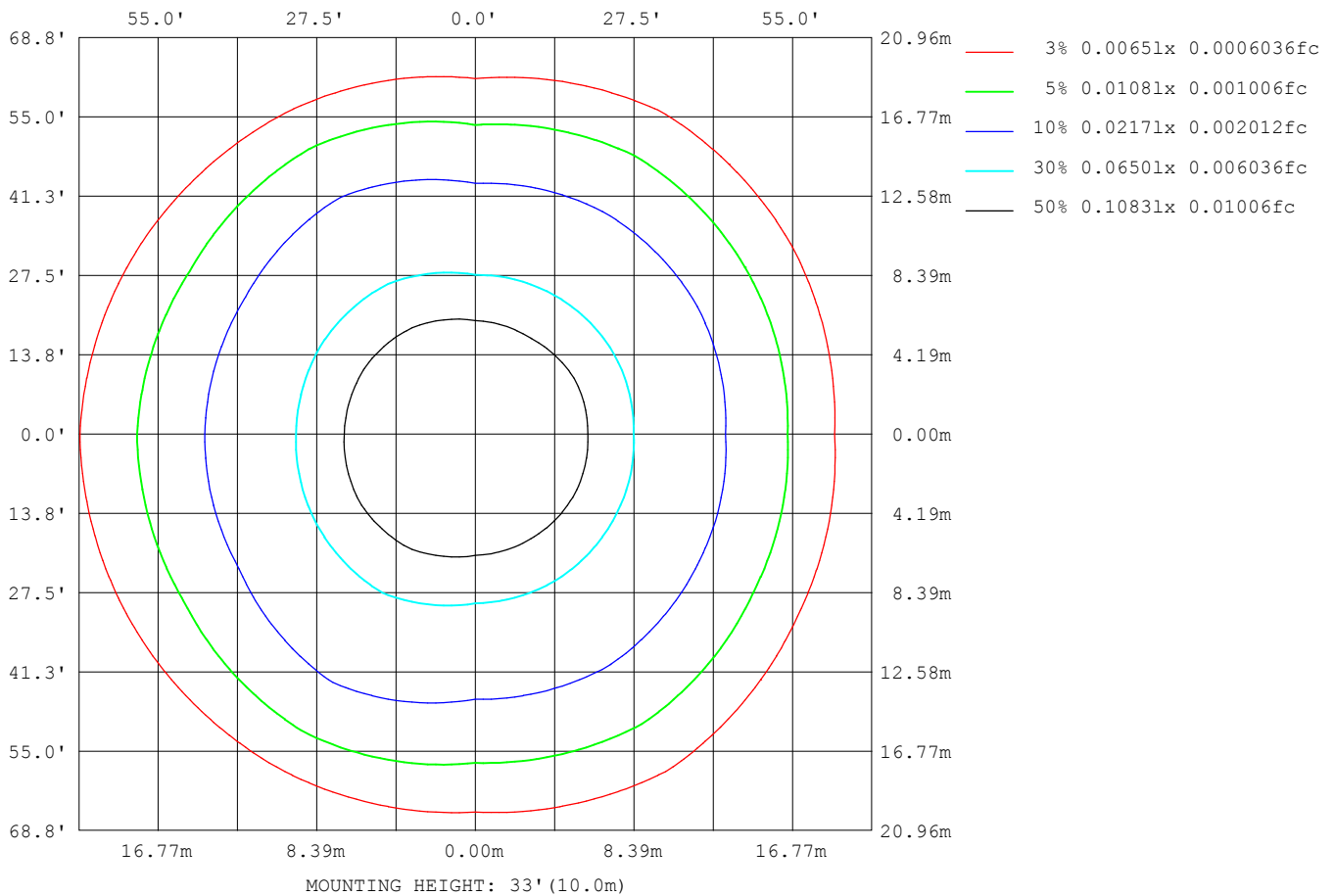
Note:The Curves indicate the illuminated area and the average illumination when the luminaire is at different distance.

C Range: 0 - 360DEG  
C Interval: 30.0DEG  
Test Speed: HIGH  
Temperature:25.3DEG  
Operators:LPC  
Test Date:2021-10-19

γ Range: 0 - 120DEG  
γ Interval: 1.0DEG  
Test System:EVERFINE GO-2000B\_V1 SYSTEM V2.0.362  
Humidity:65.0%  
Test Distance:9.200m [K=1.0000]  
Remarks:

# ISOLUX DIAGRAM

Test:U:24.00V I:0.2339A P:5.614W PF:1.000 Freq:50.00Hz Lamp Flux:0.872712x70 lm		
NAME: P01-24V-5050-70-SPI3-RGB-B	TYPE:	WEIGHT:
SPEC.:	DIM.:	SERIAL No.:
MFR.: EVERFINE	SUR.:1*0.014	Shielding Angle:



C Range: 0 - 360DEG  
C Interval: 30.0DEG  
Test Speed: HIGH  
Temperature:25.3DEG  
Operators:LPC  
Test Date:2021-10-19

γ Range: 0 - 120DEG  
γ Interval: 1.0DEG  
Test System:EVERFINE GO-2000B\_V1 SYSTEM V2.0.362  
Humidity:65.0%  
Test Distance:9.200m [K=1.0000]  
Remarks:

## LED Avg.L Report

Test:U:24.00V I:0.2339A P:5.614W PF:1.000 Freq:50.00Hz Lamp Flux:0.872712x70 lm		
NAME: P01-24V-5050-70-SPI3-RGB-B	TYPE:	WEIGHT:
SPEC.:	DIM.:	SERIAL No.:
MFR.: EVERFINE	SUR.:1*0.014	Shielding Angle:

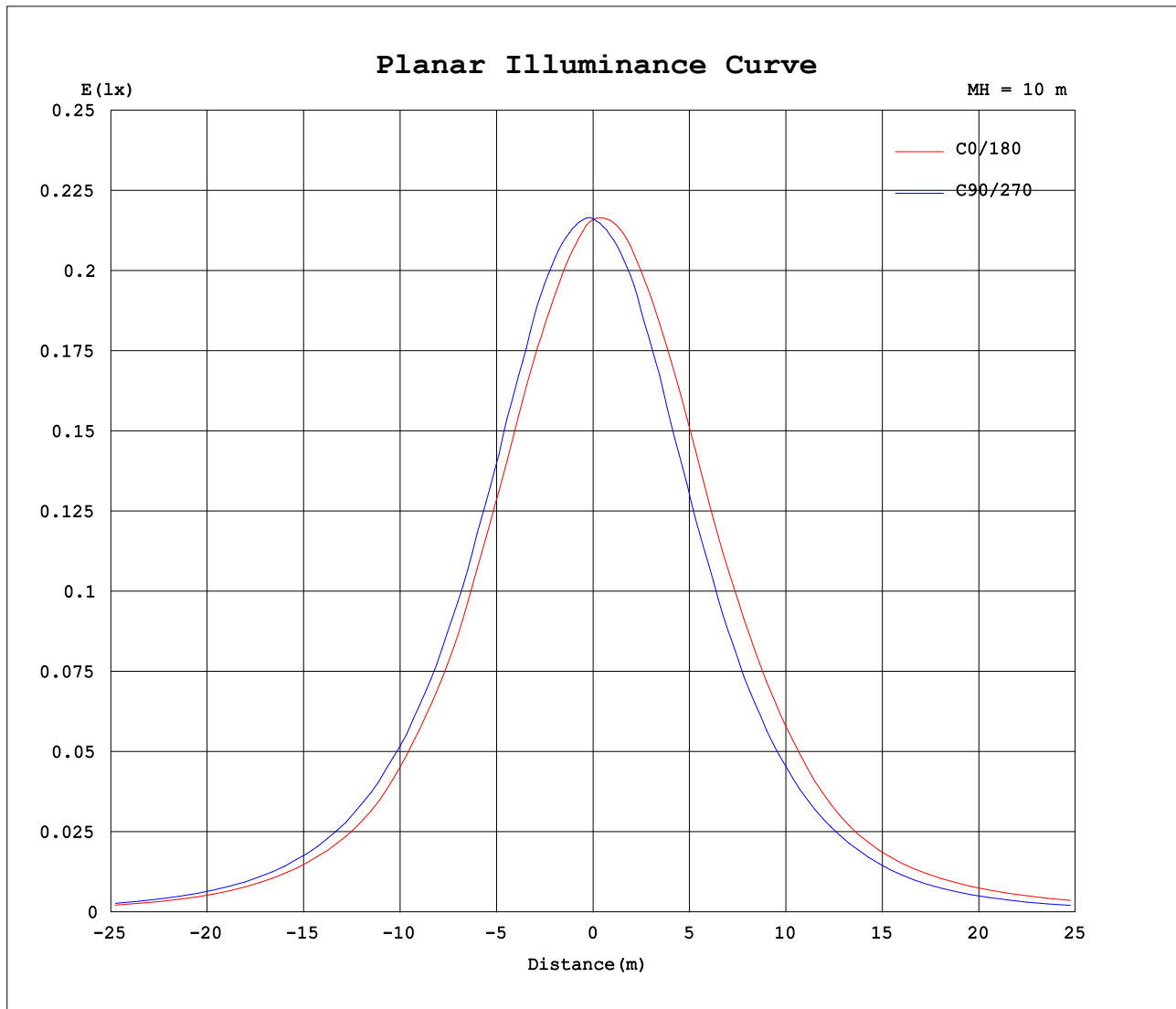
AvgL	cd/m2
L_0~180 (65) av	1119
L_0~180 (75) av	1006
L_0~180 (85) av	1264
L_90~270 (65) av	989
L_90~270 (75) av	586
L_90~270 (85) av	144
L_45 (65) av	1149
L_45 (75) av	959
L_45 (85) av	959

Standard: GB/T 29293-2012

C Range: 0 - 360DEG  
C Interval: 30.0DEG  
Test Speed: HIGH  
Temperature:25.3DEG  
Operators:LPC  
Test Date:2021-10-19

γ Range: 0 - 120DEG  
γ Interval: 1.0DEG  
Test System:EVERFINE GO-2000B\_V1 SYSTEM V2.0.362  
Humidity:65.0%  
Test Distance:9.200m [K=1.0000]  
Remarks:

## Planar Illuminance Curve



C Range: 0 - 360DEG  
C Interval: 30.0DEG  
Test Speed: HIGH  
Temperature: 25.3DEG  
Operators: LPC  
Test Date: 2021-10-19

$\gamma$  Range: 0 - 120DEG  
 $\gamma$  Interval: 1.0DEG  
Test System: EVERFINE GO-2000B\_V1 SYSTEM V2.0.362  
Humidity: 65.0%  
Test Distance: 9.200m [K=1.0000]  
Remarks:

## LUMINOUS DISTRIBUTION INTENSITY DATA

Test:U:24.00V I:0.2339A P:5.614W PF:1.000 Freq:50.00Hz Lamp Flux:0.872712x70 lm		
NAME: P01-24V-5050-70-SPI3-RGB-B	TYPE:	WEIGHT:
SPEC.:	DIM.:	SERIAL No.:
MFR.: EVERFINE	SUR.:1*0.014	Shielding Angle:

Table--1

UNIT: cd

C (DEG) γ (DEG)	0	30	60	90	120	150	180	210	240	270	300	330						
0	21.6	21.5	21.6	21.6	21.6	21.6	21.6	21.5	21.6	21.6	21.6	21.6						
5	21.1	21.2	21.5	21.7	21.8	21.9	21.8	21.6	21.5	21.4	21.2	21.1						
10	20.5	20.8	21.2	21.6	21.9	22.1	22.0	21.7	21.3	21.0	20.7	20.6						
15	19.9	20.2	20.8	21.4	21.9	22.0	21.9	21.5	21.0	20.4	20.0	19.9						
20	19.2	19.6	20.2	20.7	21.7	21.9	21.7	21.3	20.4	19.6	19.2	19.1						
25	18.3	18.8	19.2	20.0	21.2	21.5	21.3	20.8	19.7	18.6	18.0	18.4						
30	17.2	17.8	18.3	18.9	20.4	20.8	20.5	20.1	19.0	17.4	16.9	17.4						
35	15.7	16.7	17.1	17.6	19.7	20.1	19.5	19.0	18.1	16.0	15.8	16.2						
40	14.4	15.0	15.8	16.2	18.7	18.9	18.1	18.0	16.9	14.5	14.6	14.7						
45	12.8	13.6	14.5	14.7	17.5	17.0	16.4	16.1	15.4	12.9	13.1	13.1						
50	10.8	12.0	12.8	12.9	16.0	14.6	14.0	13.7	13.8	11.0	11.5	11.6						
55	9.19	9.89	11.2	10.8	14.0	11.7	11.5	11.1	11.8	9.05	9.84	9.68						
60	7.31	8.04	9.29	8.79	10.6	9.45	9.59	8.75	8.91	7.00	8.06	7.72						
65	5.33	6.13	7.31	6.60	7.17	7.70	7.91	7.23	6.07	5.10	6.28	5.99						
70	3.64	4.25	5.27	4.46	5.05	6.18	6.45	5.77	4.38	3.32	4.50	4.22						
75	2.26	2.62	3.33	2.46	3.67	4.73	5.03	4.38	3.12	1.79	2.84	2.59						
80	1.22	1.35	1.62	0.86	2.48	3.36	3.71	3.09	2.08	0.66	1.44	1.38						
85	0.56	0.58	0.64	0.22	1.42	2.18	2.52	2.02	1.11	0.14	0.51	0.61						
90	0.29	0.29	0.33	0.18	0.68	1.21	1.49	1.14	0.52	0.08	0.21	0.29						
95	0.24	0.28	0.29	0.19	0.35	0.58	0.70	0.55	0.24	0.08	0.20	0.22						
100	0.24	0.28	0.29	0.21	0.30	0.30	0.28	0.24	0.21	0.08	0.20	0.22						
105	0.24	0.29	0.27	0.24	0.27	0.29	0.17	0.23	0.22	0.12	0.21	0.22						
110	0.24	0.29	0.28	0.24	0.28	0.29	0.17	0.22	0.24	0.12	0.21	0.22						
115	0.24	0.29	0.28	0.26	0.28	0.29	0.17	0.22	0.24	0.13	0.21	0.22						
120	0.27	0.29	0.29	0.27	0.29	0.29	0.17	0.22	0.24	0.15	0.21	0.22						
125	0.00	0.00	0.00	0.00	0.00	0.00	0.00	0.00	0.00	0.00	0.00	0.00						
130	0.00	0.00	0.00	0.00	0.00	0.00	0.00	0.00	0.00	0.00	0.00	0.00						
135	0.00	0.00	0.00	0.00	0.00	0.00	0.00	0.00	0.00	0.00	0.00	0.00						
140	0.00	0.00	0.00	0.00	0.00	0.00	0.00	0.00	0.00	0.00	0.00	0.00						
145	0.00	0.00	0.00	0.00	0.00	0.00	0.00	0.00	0.00	0.00	0.00	0.00						
150	0.00	0.00	0.00	0.00	0.00	0.00	0.00	0.00	0.00	0.00	0.00	0.00						
155	0.00	0.00	0.00	0.00	0.00	0.00	0.00	0.00	0.00	0.00	0.00	0.00						
160	0.00	0.00	0.00	0.00	0.00	0.00	0.00	0.00	0.00	0.00	0.00	0.00						
165	0.00	0.00	0.00	0.00	0.00	0.00	0.00	0.00	0.00	0.00	0.00	0.00						
170	0.00	0.00	0.00	0.00	0.00	0.00	0.00	0.00	0.00	0.00	0.00	0.00						
175	0.00	0.00	0.00	0.00	0.00	0.00	0.00	0.00	0.00	0.00	0.00	0.00						
180	0.00	0.00	0.00	0.00	0.00	0.00	0.00	0.00	0.00	0.00	0.00	0.00						

C Range: 0 - 360DEG  
C Interval: 30.0DEG  
Test Speed: HIGH  
Temperature:25.3DEG  
Operators:LPC  
Test Date:2021-10-19

γ Range: 0 - 120DEG  
γ Interval: 1.0DEG  
Test System:EVERFINE GO-2000B\_V1 SYSTEM V2.0.362  
Humidity:65.0%  
Test Distance:9.200m [K=1.0000]  
Remarks: