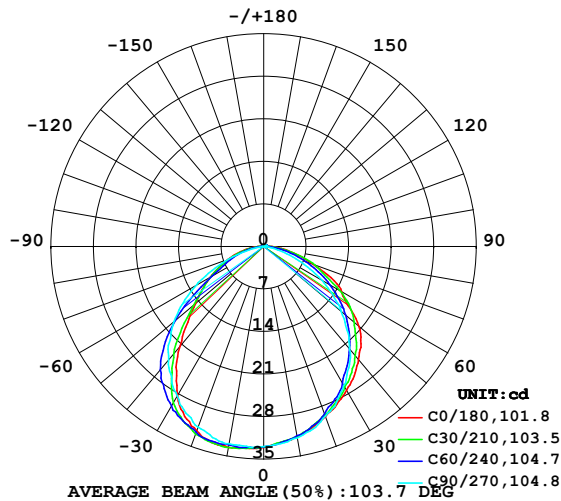


## LUMINAIRE PHOTOMETRIC TEST REPORT

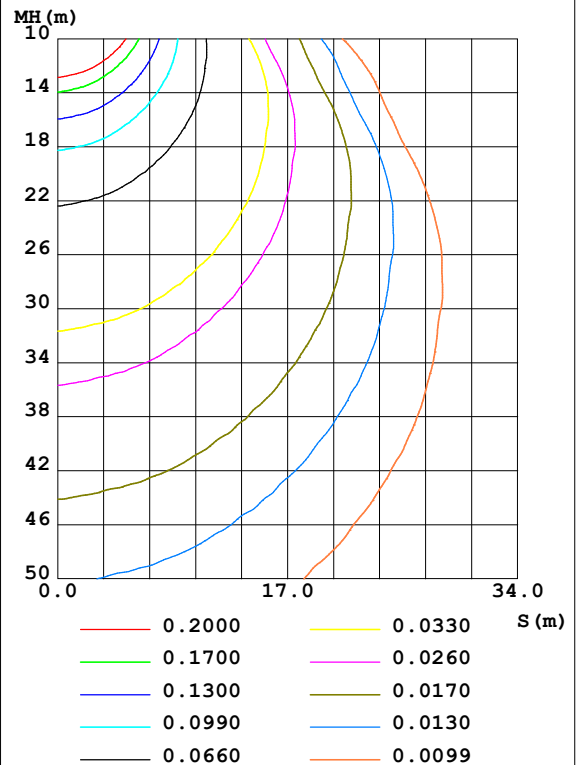
Test:U:24.00V I:0.3167A P:7.601W PF:1.000 Freq:50.00Hz Lamp Flux:1.26353x70 lm		
NAME: P01-24V-5050-70-DMX-RGBW(5000K)-R	TYPE:	WEIGHT:
SPEC.:	DIM.:	SERIAL No.:
MFR.: OLYMPIA	SUR.:1*0.014	Shielding Angle:

DATA OF LAMP		PHOTOMETRIC DATA Eff: 11.64 lm/W			
MODEL	5050	I <sub>max</sub> (cd)	33.65	S/MH (C0/180)	1.25
NOMINAL POWER (W)	12	LOR (%)	100.0	S/MH (C90/270)	1.28
RATED VOLTAGE (V)	24	TOTAL FLUX (lm)	88.447	η UP, DN (C0-180)	0.8, 48.0
NOMINAL FLUX (lm)	1.26353	CIE CLASS	DIRECT	η UP, DN (C180-360)	0.5, 50.7
LAMPS INSIDE	70	η up (%)	1.3	CIBSE SHR NOM	1.25
TEST VOLTAGE (V)	24	η down (%)	98.7	CIBSE SHR MAX	1.35

LUMINOUS INTENSITY DISTRIBUTION DIAGRAM



C0 PLANE ISOLUX DIAGRAM (UNIT:lx)



C Range: 0 - 360DEG  
 C Interval: 30.0DEG  
 Test Speed: HIGH  
 Temperature: 25.3DEG  
 Operators: LPC  
 Test Date: 2021-10-22

γ Range: 0 - 120DEG  
 γ Interval: 1.0DEG  
 Test System: EVERFINE GO-2000B\_V1 SYSTEM V2.0.362  
 Humidity: 65.0%  
 Test Distance: 9.200m [K=1.0000]  
 Remarks:

## ZONAL FLUX DIAGRAM

## ZONAL FLUX DIAGRAM:

$\gamma$	C0	C45	C90	C135	C180	C225	C270	C315	$\gamma$	$\Phi$ zone	$\Phi$ total	%lum, lamp
10	31.82	31.69	31.98	32.60	33.60	33.37	32.96	32.23	0- 10	3.122	3.122	3.53,3.53
20	29.84	29.38	29.73	31.24	32.31	32.67	31.62	30.48	10- 20	9.006	12.13	13.7,13.7
30	27.34	26.31	26.41	27.85	28.36	30.04	28.44	27.86	20- 30	13.63	25.75	29.1,29.1
40	24.31	22.73	21.98	22.15	21.39	24.76	24.38	24.72	30- 40	16.11	41.86	47.3,47.3
50	20.46	18.53	16.68	15.02	14.70	17.03	19.32	20.68	40- 50	15.95	57.81	65.4,65.4
60	14.80	13.48	11.03	8.977	10.18	9.964	12.81	15.73	50- 60	13.33	71.14	80.4,80.4
70	8.700	8.210	5.076	5.151	6.248	5.664	6.162	10.04	60- 70	9.360	80.50	91,91
80	4.069	3.395	1.229	2.274	2.952	2.352	0.9629	4.435	70- 80	5.098	85.60	96.8,96.8
90	1.027	0.7587	0.2716	0.6256	0.6470	0.4450	0.1005	0.8648	80- 90	1.669	87.27	98.7,98.7
100	0.3418	0.4524	0.3269	0.4951	0.2463	0.2639	0.1256	0.2664	90-100	0.4308	87.70	99.2,99.2
110	0.3418	0.4498	0.3920	0.4974	0.2865	0.3092	0.1608	0.2789	100-110	0.3608	88.06	99.6,99.6
120	0.3669	0.4624	0.4272	0.5202	0.2865	0.3468	0.2161	0.2789	110-120	0.3694	88.43	100,100
130	0	0	0	0	0	0	0	0	120-130	0.0178	88.45	100,100
140	0	0	0	0	0	0	0	0	130-140	0	88.45	100,100
150	0	0	0	0	0	0	0	0	140-150	0	88.45	100,100
160	0	0	0	0	0	0	0	0	150-160	0	88.45	100,100
170	0	0	0	0	0	0	0	0	160-170	0	88.45	100,100
180	0	0	0	0	0	0	0	0	170-180	0	88.45	100,100
DEG	LUMINOUS INTENSITY:cd									UNIT:lm		

Conical surface Flux(90deg): 50.042 lm

%lum = 56.6%

%lamp = 56.6%

Conical surface Flux(120deg): 71.141 lm

%lum = 80.4%

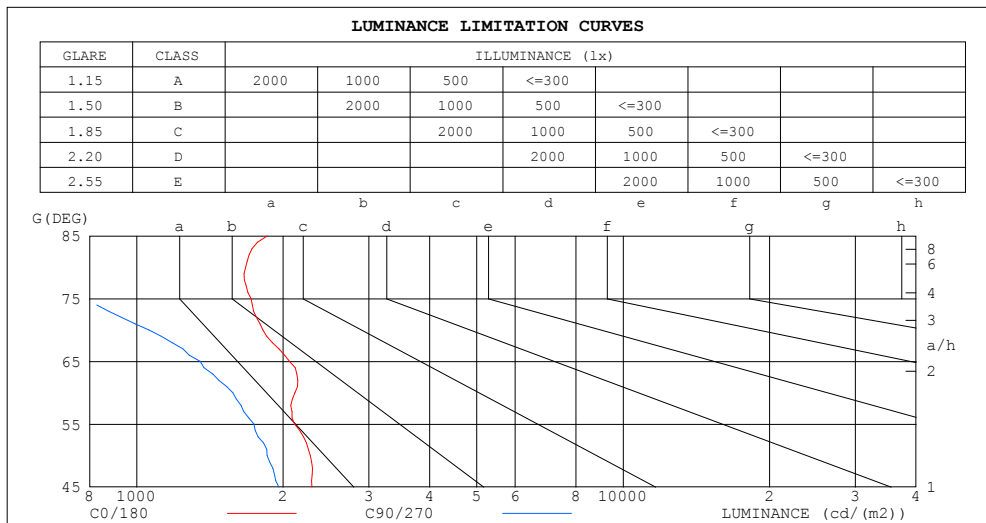
%lamp = 80.4%

C Range: 0 - 360DEG  
 C Interval: 30.0DEG  
 Test Speed: HIGH  
 Temperature:25.3DEG  
 Operators:LPC  
 Test Date:2021-10-22

$\gamma$  Range: 0 - 120DEG  
 $\gamma$  Interval: 1.0DEG  
 Test System:EVERFINE GO-2000B\_V1 SYSTEM V2.0.362  
 Humidity:65.0%  
 Test Distance:9.200m [K=1.0000]  
 Remarks:

## LUMINANCE LIMITATION CURVES

Test:U:24.00V I:0.3167A P:7.601W PF:1.000 Freq:50.00Hz Lamp Flux:1.26353x70 lm		
NAME: P01-24V-5050-70-DMX-RGBW(5000K)-R	TYPE:	WEIGHT:
SPEC.:	DIM.:	SERIAL No.:
MFR.: OLYMPIA	SUR.:1*0.014	Shielding Angle:



LUMINANCE cd/(m2)		
G (DEG)	C0/180	C90/270
85	1857	358
80	1674	506
75	1717	768
70	1817	1060
65	2061	1350
60	2115	1576
55	2112	1740
50	2274	1854
45	2291	1960

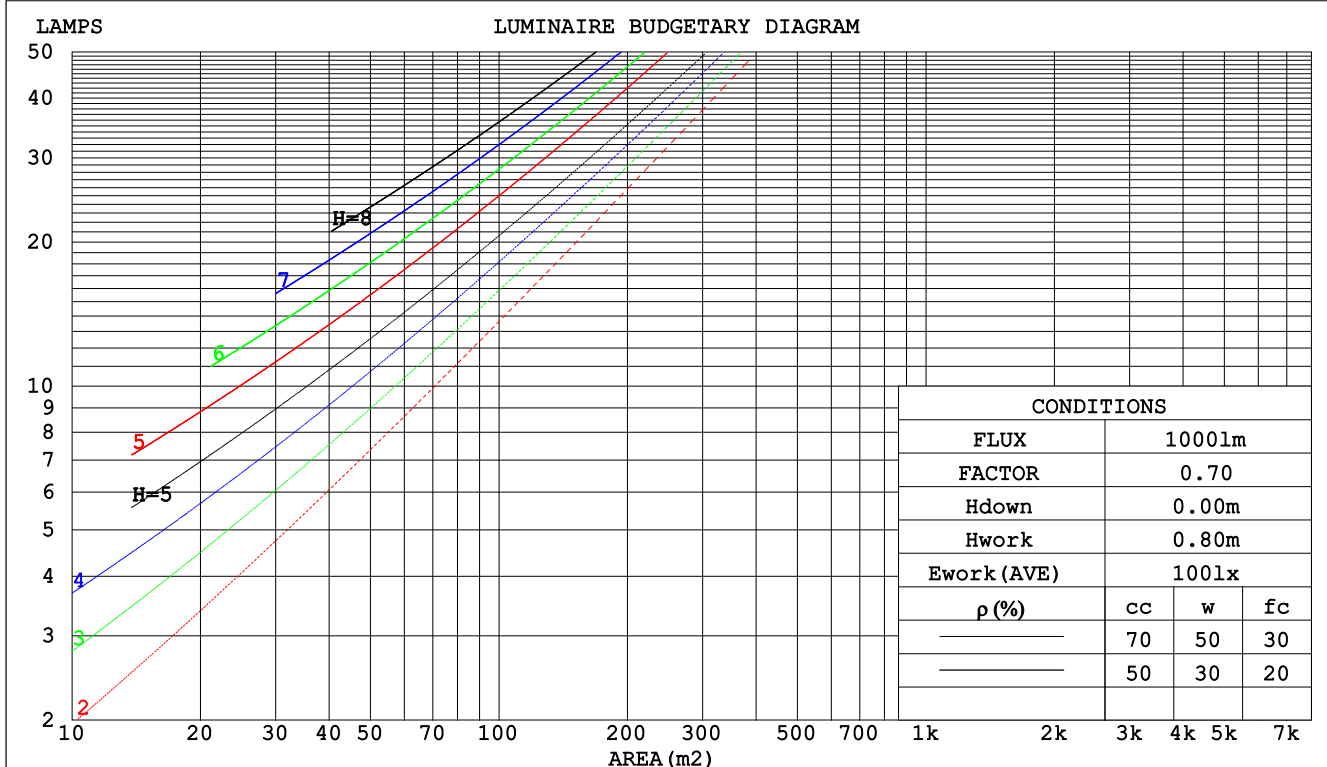
C Range: 0 - 360DEG  
C Interval: 30.0DEG  
Test Speed: HIGH  
Temperature:25.3DEG  
Operators:LPC  
Test Date:2021-10-22

$\gamma$  Range: 0 - 120DEG  
 $\gamma$  Interval: 1.0DEG  
Test System:EVERFINE GO-2000B\_V1 SYSTEM V2.0.362  
Humidity:65.0%  
Test Distance:9.200m [K=1.0000]  
Remarks:

## CU AND LUMINAIRE BUDGETARY ESTIMATE DIAGRAM

Test:U:24.00V I:0.3167A P:7.601W PF:1.000 Freq:50.00Hz Lamp Flux:1.26353x70 lm		
NAME: P01-24V-5050-70-DMX-RGBW(5000K)-R	TYPE:	WEIGHT:
SPEC.:	DIM.:	SERIAL No.:
MFR.: OLYMPIA	SUR.:1*0.014	Shielding Angle:

pcc	80%			70%			50%			30%			10%			0
pw	50%	30%	10%	50%	30%	10%	50%	30%	10%	50%	30%	10%	50%	30%	10%	0
pfc	20%			20%			20%			20%			20%			0
RCR	RCR:Room Cavity Ratio						Coefficients of Utilization(CU)									
0.0	1.19	1.19	1.19	1.16	1.16	1.16	1.10	1.10	1.10	1.05	1.05	1.05	1.01	1.01	1.01	.99
1.0	1.04	1.00	.96	1.02	.98	.95	.97	.94	.91	.93	.91	.88	.89	.87	.86	.83
2.0	.91	.85	.79	.89	.83	.78	.86	.80	.76	.82	.78	.74	.79	.75	.72	.70
3.0	.81	.73	.66	.79	.72	.66	.76	.69	.64	.73	.67	.63	.70	.66	.62	.60
4.0	.72	.63	.57	.70	.62	.56	.68	.61	.55	.65	.59	.54	.63	.58	.53	.51
5.0	.64	.55	.49	.63	.55	.49	.61	.53	.48	.59	.52	.47	.57	.51	.47	.45
6.0	.58	.49	.43	.57	.49	.43	.55	.48	.42	.53	.47	.42	.51	.46	.41	.39
7.0	.53	.44	.38	.52	.44	.38	.50	.43	.37	.49	.42	.37	.47	.41	.37	.35
8.0	.48	.40	.34	.47	.39	.34	.46	.39	.33	.45	.38	.33	.43	.37	.33	.31
9.0	.44	.36	.31	.43	.36	.30	.42	.35	.30	.41	.35	.30	.40	.34	.30	.28
10.0	.41	.33	.28	.40	.33	.28	.39	.32	.27	.38	.32	.27	.37	.31	.27	.25



C Range: 0 - 360DEG  
 C Interval: 30.0DEG  
 Test Speed: HIGH  
 Temperature:25.3DEG  
 Operators:LPC  
 Test Date:2021-10-22

γ Range: 0 - 120DEG  
 γ Interval: 1.0DEG  
 Test System:EVERFINE GO-2000B\_V1 SYSTEM V2.0.362  
 Humidity:65.0%  
 Test Distance:9.200m [K=1.0000]  
 Remarks:

### WEC AND CCEC

Test:U:24.00V I:0.3167A P:7.601W PF:1.000 Freq:50.00Hz Lamp Flux:1.26353x70 lm		
NAME: P01-24V-5050-70-DMX-RGBW(5000K)-R	TYPE:	WEIGHT:
SPEC.:	DIM.:	SERIAL No.:
MFR.: OLYMPIA	SUR.:1*0.014	Shielding Angle:

pcc	80%			70%			50%			30%			10%			0	
pw	50%	30%	10%	50%	30%	10%	50%	30%	10%	50%	30%	10%	50%	30%	10%	0	
pfc	20%			20%			20%			20%			20%			0	
RCR	RCR:Room Cavity Ratio						Wall Exitance Coefficients(WEC)										
0.0																	
1.0	.298	.169	.054	.290	.166	.053	.276	.159	.051	.264	.152	.049	.252	.146	.047		
2.0	.280	.154	.047	.274	.151	.046	.262	.145	.045	.250	.140	.044	.240	.136	.043		
3.0	.260	.139	.041	.255	.136	.041	.244	.132	.040	.234	.128	.039	.224	.124	.038		
4.0	.241	.125	.037	.236	.124	.037	.226	.120	.036	.217	.117	.035	.209	.114	.035		
5.0	.224	.114	.033	.219	.112	.033	.210	.110	.032	.202	.107	.032	.195	.104	.031		
6.0	.208	.104	.030	.204	.103	.030	.196	.101	.029	.189	.098	.029	.182	.096	.029		
7.0	.194	.096	.027	.190	.095	.027	.184	.093	.027	.177	.091	.026	.171	.089	.026		
8.0	.182	.089	.025	.178	.088	.025	.172	.086	.025	.166	.084	.024	.161	.083	.024		
9.0	.171	.082	.023	.168	.082	.023	.162	.080	.023	.157	.079	.022	.152	.077	.022		
10.0	.161	.077	.021	.158	.076	.021	.153	.075	.021	.148	.074	.021	.144	.072	.021		

pcc	80%			70%			50%			30%			10%			0
pw	50%	30%	10%	50%	30%	10%	50%	30%	10%	50%	30%	10%	50%	30%	10%	0
pfc	20%			20%			20%			20%			20%			0
RCR	RCR:Room Cavity Ratio			Ceiling Cavity Exitance Coefficients(CCEC)												
0.0	.201	.201	.201	.171	.171	.171	.117	.117	.117	.067	.067	.067	.021	.021	.021	
1.0	.190	.166	.146	.162	.143	.125	.111	.098	.087	.064	.057	.050	.020	.018	.016	
2.0	.181	.142	.110	.155	.122	.095	.106	.085	.066	.061	.049	.039	.020	.016	.013	
3.0	.173	.125	.086	.148	.107	.075	.102	.075	.052	.059	.044	.031	.019	.014	.010	
4.0	.165	.111	.070	.142	.096	.061	.098	.067	.043	.056	.039	.025	.018	.013	.008	
5.0	.158	.101	.059	.136	.087	.051	.093	.061	.036	.054	.036	.021	.017	.012	.007	
6.0	.151	.092	.050	.130	.080	.044	.089	.056	.031	.052	.033	.018	.017	.011	.006	
7.0	.144	.085	.044	.124	.074	.039	.086	.052	.027	.050	.031	.016	.016	.010	.005	
8.0	.138	.080	.040	.119	.069	.035	.082	.049	.025	.048	.029	.015	.015	.009	.005	
9.0	.132	.075	.036	.114	.065	.032	.079	.046	.022	.046	.027	.013	.015	.009	.004	
10.0	.126	.070	.033	.109	.061	.029	.076	.043	.021	.044	.025	.012	.014	.008	.004	

C Range: 0 - 360DEG  
C Interval: 30.0DEG  
Test Speed: HIGH  
Temperature:25.3DEG  
Operators:LPC  
Test Date:2021-10-22

γ Range: 0 - 120DEG  
γ Interval: 1.0DEG  
Test System:EVERFINE GO-2000B\_V1 SYSTEM V2.0.362  
Humidity:65.0%  
Test Distance:9.200m [K=1.0000]  
Remarks:

UGR(Unified Glare Rating) Table

Test:U:24.00V I:0.3167A P:7.601W PF:1.000 Freq:50.00Hz Lamp Flux:1.26353x70 lm											
NAME: P01-24V-5050-70-DMX-RGBW(5000K)-R						TYPE:		WEIGHT:			
SPEC.:						DIM.:		SERIAL No.:			
MFR.: OLYMPIA						SUR.:1*0.014		Shielding Angle:			
ceiling/cavity	0.7	0.7	0.5	0.5	0.3	0.7	0.7	0.5	0.5	0.3	
walls	0.5	0.3	0.5	0.3	0.3	0.5	0.3	0.5	0.3	0.3	
working plane	0.2	0.2	0.2	0.2	0.2	0.2	0.2	0.2	0.2	0.2	
Room dimensions		Viewed crosswise					Viewed endwise				
x = 2H y = 2H	24.1	25.6	24.4	25.8	26.0	23.0	24.5	23.3	24.7	24.9	
	3H	25.6	27.0	25.9	27.2	27.5	24.0	25.4	24.3	25.6	25.9
	4H	26.2	27.5	26.5	27.7	28.0	24.3	25.6	24.6	25.8	26.1
	6H	26.6	27.9	27.0	28.1	28.4	24.4	25.6	24.7	25.9	26.2
	8H	26.8	28.0	27.2	28.3	28.6	24.4	25.5	24.7	25.8	26.2
	12H	27.0	28.1	27.4	28.4	28.8	24.3	25.5	24.7	25.8	26.1
4H	2H	24.6	25.9	24.9	26.1	26.4	23.8	25.0	24.1	25.3	25.6
	3H	26.3	27.4	26.7	27.7	28.1	25.0	26.1	25.4	26.4	26.8
	4H	27.0	28.1	27.4	28.4	28.8	25.4	26.4	25.8	26.8	27.1
	6H	27.6	28.5	28.1	28.9	29.3	25.6	26.5	26.0	26.9	27.3
	8H	27.9	28.7	28.3	29.1	29.5	25.6	26.5	26.1	26.9	27.3
	12H	28.1	28.9	28.6	29.3	29.7	25.6	26.4	26.1	26.8	27.2
8H	4H	27.2	28.1	27.7	28.5	28.9	25.8	26.6	26.2	27.0	27.4
	6H	28.0	28.7	28.5	29.1	29.6	26.2	26.9	26.6	27.3	27.8
	8H	28.3	29.0	28.8	29.4	29.9	26.3	26.9	26.8	27.4	27.8
	12H	28.7	29.2	29.2	29.7	30.2	26.3	26.9	26.8	27.3	27.9
12H	4H	27.2	28.0	27.7	28.4	28.8	25.8	26.6	26.3	27.0	27.4
	6H	28.0	28.6	28.5	29.1	29.6	26.3	26.9	26.8	27.3	27.8
	8H	28.4	28.9	28.9	29.4	29.9	26.4	27.0	26.9	27.4	28.0
Variations with the observer position at spacings:											
S = 1.0H	+ 0.2 / - 0.2					+ 0.2 / - 0.3					
1.5H	+ 0.2 / - 0.3					+ 0.2 / - 0.4					
2.0H	+ 0.2 / - 0.3					+ 0.2 / - 0.5					

CIE Pub.117, 88.45 lm Total Lamp Luminous Flux Correct (8log(F/F0) = -8.4)

C Range: 0 - 360DEG  
C Interval: 30.0DEG  
Test Speed: HIGH  
Temperature:25.3DEG  
Operators:LPC  
Test Date:2021-10-22

γ Range: 0 - 120DEG  
γ Interval: 1.0DEG  
Test System:EVERFINE GO-2000B\_V1 SYSTEM V2.0.362  
Humidity:65.0%  
Test Distance:9.200m [K=1.0000]  
Remarks:

### UTILIZATION FACTORS TABLE

Test:U:24.00V I:0.3167A P:7.601W PF:1.000 Freq:50.00Hz Lamp Flux:1.26353x70 lm		
NAME: P01-24V-5050-70-DMX-RGBW(5000K)-R	TYPE:	WEIGHT:
SPEC.:	DIM.:	SERIAL No.:
MFR.: OLYMPIA	SUR.:1*0.014	Shielding Angle:

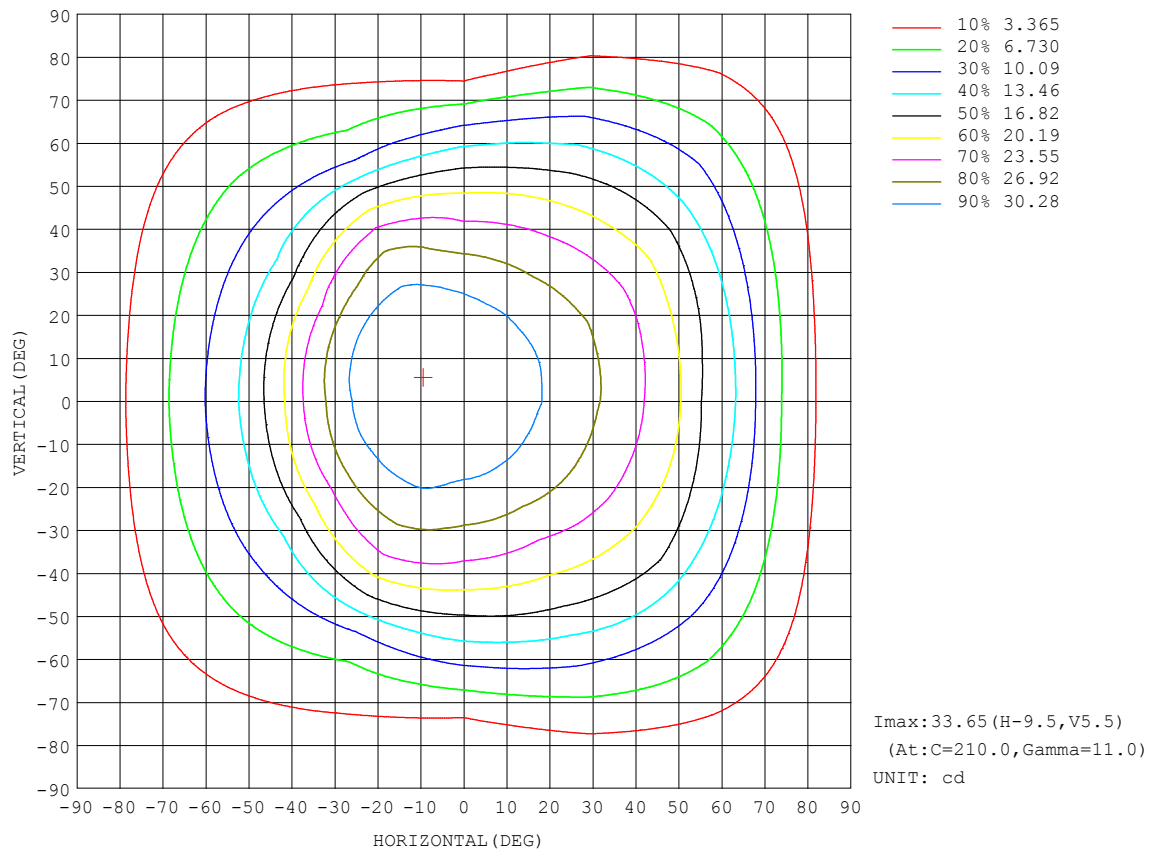
REFLECTANCE										
Ceiling	0.8	0.8	0.8	0.7	0.7	0.7	0.5	0.5	0.5	0
Walls	0.7	0.5	0.3	0.7	0.5	0.3	0.7	0.5	0.3	0
Working plane	0.2	0.2	0.2	0.2	0.2	0.2	0.2	0.2	0.2	0
ROOM INDEX	UTILIZATION FACTORS (PERCENT)    k(RI) x RCR = 5									
k = 0.60	59	48	41	58	47	41	57	47	41	34
0.80	69	58	51	68	57	50	66	56	50	43
1.00	77	67	59	76	66	59	74	67	59	52
1.25	84	74	67	83	73	67	80	72	66	59
1.50	89	80	73	87	79	72	84	77	71	64
2.00	96	87	81	94	86	80	90	84	79	71
2.50	99	92	86	97	90	85	93	88	83	75
3.00	103	96	91	100	94	89	96	91	87	79
4.00	106	101	96	104	99	95	100	96	92	83
5.00	109	104	100	106	102	98	102	98	95	86
ROOM INDEX	UF (total)									Direct
According to DIN EN 13032-2 2004										
Suspended										
SHRNOm = 1.25										

C Range: 0 - 360DEG  
C Interval: 30.0DEG  
Test Speed: HIGH  
Temperature:25.3DEG  
Operators:LPC  
Test Date:2021-10-22

$\gamma$  Range: 0 - 120DEG  
 $\gamma$  Interval: 1.0DEG  
Test System:EVERFINE GO-2000B\_V1 SYSTEM V2.0.362  
Humidity:65.0%  
Test Distance:9.200m [K=1.0000]  
Remarks:

## ISOCANDELA DIAGRAM

Test:U:24.00V I:0.3167A P:7.601W PF:1.000 Freq:50.00Hz Lamp Flux:1.26353x70 lm		
NAME: P01-24V-5050-70-DMX-RGBW(5000K)-R	TYPE:	WEIGHT:
SPEC.:	DIM.:	SERIAL No.:
MFR.: OLYMPIA	SUR.:1*0.014	Shielding Angle:



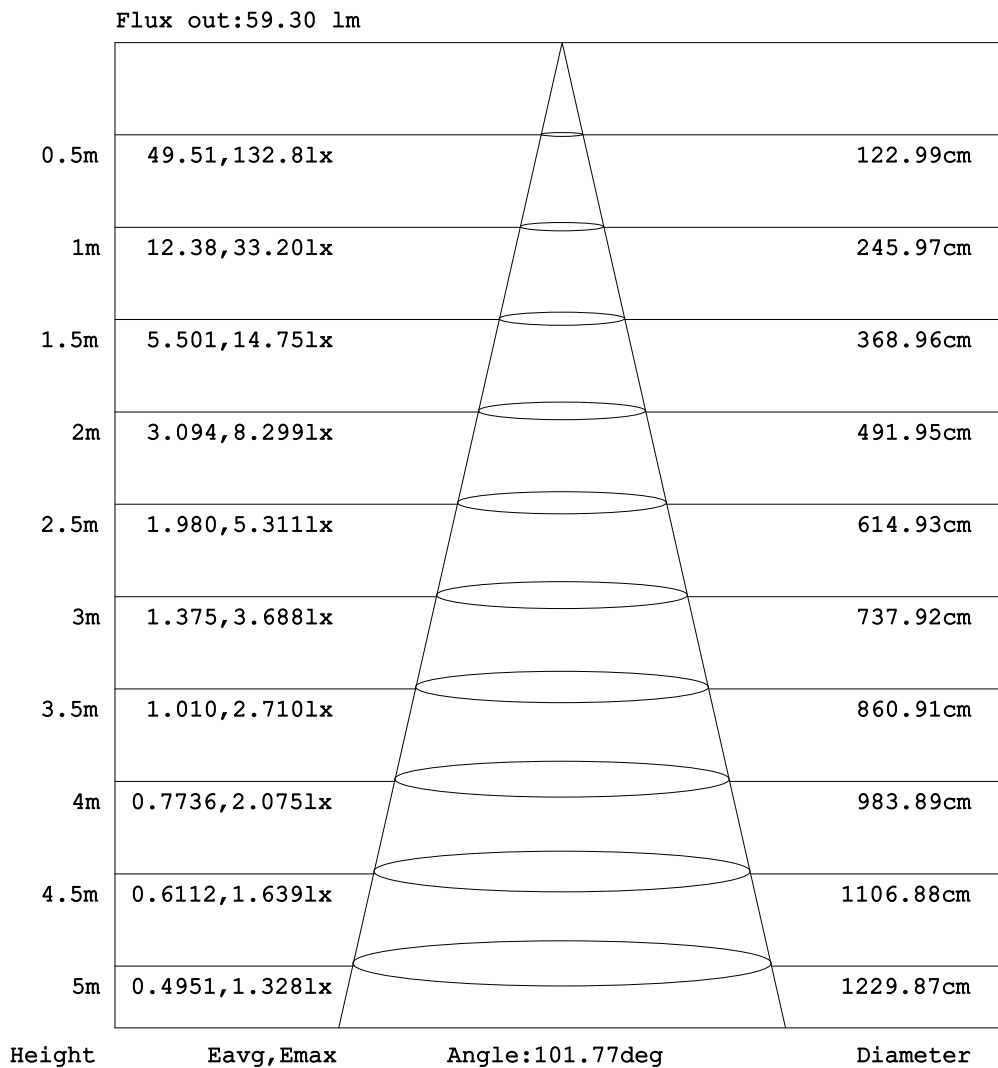
C Range: 0 - 360DEG  
C Interval: 30.0DEG  
Test Speed: HIGH  
Temperature: 25.3DEG  
Operators: LPC  
Test Date: 2021-10-22

γ Range: 0 - 120DEG  
γ Interval: 1.0DEG  
Test System: EVERFINE GO-2000B\_V1 SYSTEM V2.0.362  
Humidity: 65.0%  
Test Distance: 9.200m [K=1.0000]  
Remarks:



### AAI Figure

Test:U:24.00V I:0.3167A P:7.601W PF:1.000 Freq:50.00Hz Lamp Flux:1.26353x70 lm		
NAME: P01-24V-5050-70-DMX-RGBW(5000K)-R	TYPE:	WEIGHT:
SPEC.:	DIM.:	SERIAL No.:
MFR.: OLYMPIA	SUR.:1*0.014	Shielding Angle:



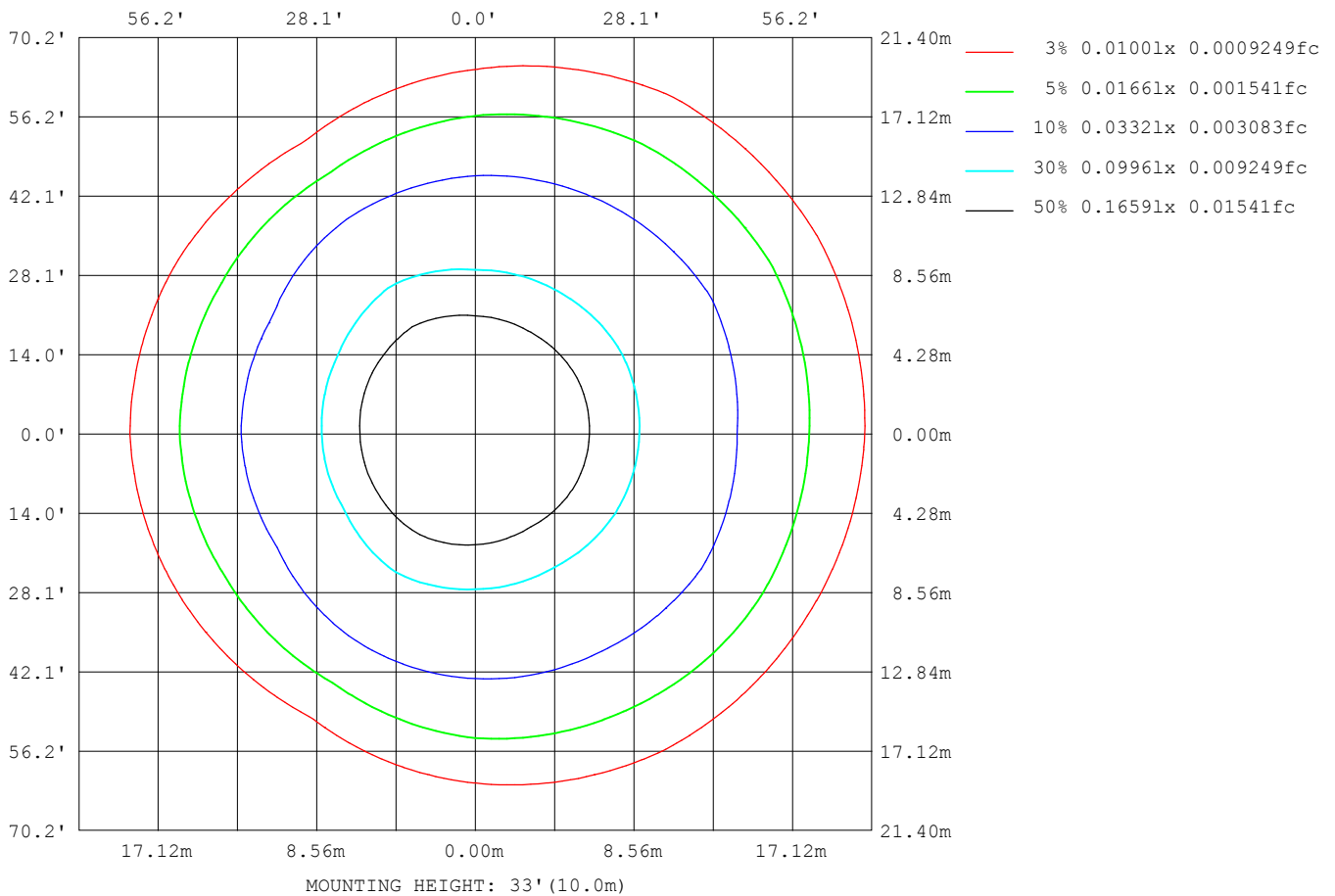
Note:The Curves indicate the illuminated area and the average illumination when the luminaire is at different distance.

C Range: 0 - 360DEG  
C Interval: 30.0DEG  
Test Speed: HIGH  
Temperature:25.3DEG  
Operators:LPC  
Test Date:2021-10-22

γ Range: 0 - 120DEG  
γ Interval: 1.0DEG  
Test System:EVERFINE GO-2000B\_V1 SYSTEM V2.0.362  
Humidity:65.0%  
Test Distance:9.200m [K=1.0000]  
Remarks:

# ISOLUX DIAGRAM

Test:U:24.00V I:0.3167A P:7.601W PF:1.000 Freq:50.00Hz Lamp Flux:1.26353x70 lm		
NAME: P01-24V-5050-70-DMX-RGBW(5000K)-R	TYPE:	WEIGHT:
SPEC.:	DIM.:	SERIAL No.:
MFR.: OLYMPIA	SUR.:1*0.014	Shielding Angle:



C Range: 0 - 360DEG  
C Interval: 30.0DEG  
Test Speed: HIGH  
Temperature:25.3DEG  
Operators:LPC  
Test Date:2021-10-22

γ Range: 0 - 120DEG  
γ Interval: 1.0DEG  
Test System:EVERFINE GO-2000B\_V1 SYSTEM V2.0.362  
Humidity:65.0%  
Test Distance:9.200m [K=1.0000]  
Remarks:

## LED Avg.L Report

Test:U:24.00V I:0.3167A P:7.601W PF:1.000 Freq:50.00Hz Lamp Flux:1.26353x70 lm		
NAME: P01-24V-5050-70-DMX-RGBW(5000K)-R	TYPE:	WEIGHT:
SPEC.:	DIM.:	SERIAL No.:
MFR.: OLYMPIA	SUR.:1*0.014	Shielding Angle:

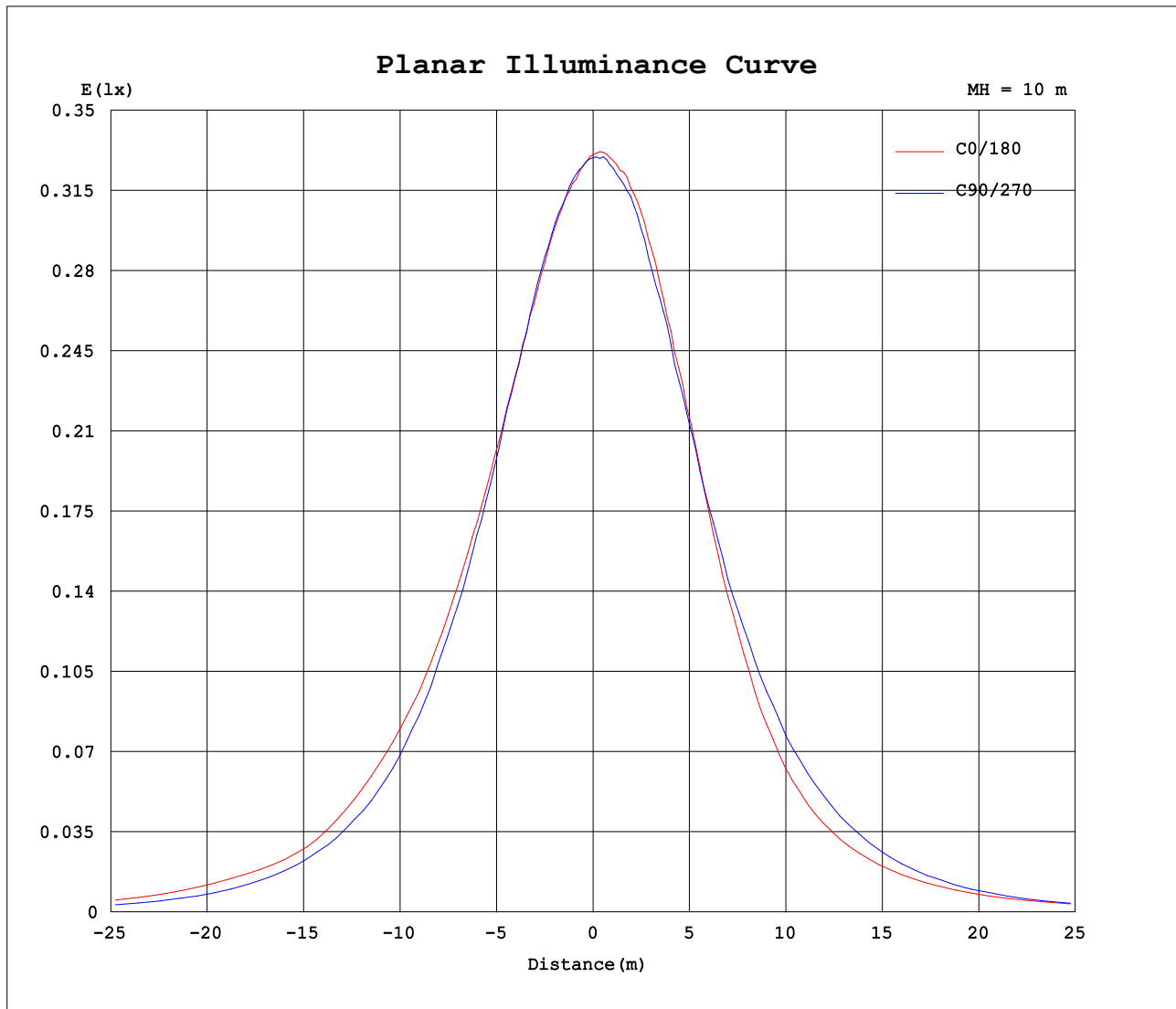
AvgL	cd/m2
L_0~180 (65) av	1715
L_0~180 (75) av	1487
L_0~180 (85) av	1580
L_90~270 (65) av	1469
L_90~270 (75) av	808
L_90~270 (85) av	259
L_45 (65) av	1590
L_45 (75) av	1443
L_45 (85) av	1348

Standard: GB/T 29293-2012

C Range: 0 - 360DEG  
C Interval: 30.0DEG  
Test Speed: HIGH  
Temperature:25.3DEG  
Operators:LPC  
Test Date:2021-10-22

γ Range: 0 - 120DEG  
γ Interval: 1.0DEG  
Test System:EVERFINE GO-2000B\_V1 SYSTEM V2.0.362  
Humidity:65.0%  
Test Distance:9.200m [K=1.0000]  
Remarks:

## Planar Illuminance Curve



C Range: 0 - 360DEG  
C Interval: 30.0DEG  
Test Speed: HIGH  
Temperature: 25.3DEG  
Operators: LPC  
Test Date: 2021-10-22

$\gamma$  Range: 0 - 120DEG  
 $\gamma$  Interval: 1.0DEG  
Test System: EVERFINE GO-2000B\_V1 SYSTEM V2.0.362  
Humidity: 65.0%  
Test Distance: 9.200m [K=1.0000]  
Remarks:

## LUMINOUS DISTRIBUTION INTENSITY DATA

Test:U:24.00V I:0.3167A P:7.601W PF:1.000 Freq:50.00Hz Lamp Flux:1.26353x70 lm		
NAME: P01-24V-5050-70-DMX-RGBW(5000K)-R	TYPE:	WEIGHT:
SPEC.:	DIM.:	SERIAL No.:
MFR.: OLYMPIA	SUR.:1*0.014	Shielding Angle:

Table--1

UNIT: cd

C (DEG) γ (DEG)	0	30	60	90	120	150	180	210	240	270	300	330						
0	33.1	33.0	33.0	32.9	32.9	32.8	33.1	33.0	33.0	32.9	32.9	32.8						
5	32.3	32.4	32.4	32.6	32.8	32.9	33.3	33.4	33.2	33.0	32.7	32.5						
10	31.8	31.8	31.6	32.0	32.4	32.8	33.6	33.6	33.2	33.0	32.5	32.0						
15	30.9	30.7	30.7	31.1	31.9	32.5	33.4	33.4	33.1	32.6	31.9	31.3						
20	29.8	29.5	29.3	29.7	31.0	31.5	32.3	32.8	32.5	31.6	30.7	30.2						
25	28.6	28.2	27.7	28.4	29.7	30.0	30.9	31.6	31.6	30.3	29.3	29.2						
30	27.3	26.7	25.9	26.4	27.9	27.8	28.4	29.8	30.3	28.4	27.9	27.9						
35	26.0	25.3	24.0	24.4	25.9	24.5	25.0	26.5	28.6	26.4	25.8	26.5						
40	24.3	23.5	22.0	22.0	23.3	21.0	21.4	23.0	26.5	24.4	24.4	25.0						
45	22.7	21.5	19.9	19.4	20.0	17.3	17.7	19.1	23.2	21.8	22.5	23.2						
50	20.5	19.5	17.6	16.7	16.3	13.8	14.7	15.1	19.0	19.3	20.2	21.2						
55	17.0	17.4	15.1	14.0	12.1	11.4	12.4	12.3	14.2	16.2	17.7	19.0						
60	14.8	14.4	12.6	11.0	8.63	9.32	10.2	10.1	9.85	12.8	15.2	16.3						
65	12.2	11.1	9.98	7.99	6.36	7.37	8.09	7.98	7.14	9.39	12.4	12.9						
70	8.70	8.99	7.43	5.08	4.76	5.55	6.25	6.01	5.31	6.16	9.62	10.5						
75	6.22	6.32	5.06	2.78	3.30	3.97	4.56	4.22	3.61	3.08	6.80	7.59						
80	4.07	3.81	2.98	1.23	2.03	2.52	2.95	2.63	2.07	0.96	4.11	4.76						
85	2.27	1.99	1.43	0.44	1.09	1.34	1.59	1.36	0.95	0.20	1.92	2.62						
90	1.03	0.90	0.62	0.27	0.60	0.65	0.65	0.54	0.35	0.10	0.56	1.17						
95	0.44	0.44	0.48	0.30	0.51	0.47	0.24	0.29	0.27	0.10	0.27	0.43						
100	0.34	0.43	0.48	0.33	0.51	0.48	0.25	0.26	0.27	0.13	0.26	0.27						
105	0.34	0.44	0.42	0.39	0.45	0.51	0.27	0.26	0.27	0.16	0.25	0.27						
110	0.34	0.46	0.44	0.39	0.48	0.52	0.29	0.28	0.34	0.16	0.29	0.27						
115	0.37	0.46	0.52	0.41	0.52	0.52	0.29	0.29	0.36	0.20	0.29	0.29						
120	0.37	0.46	0.47	0.43	0.52	0.52	0.29	0.31	0.38	0.22	0.27	0.29						
125	0.00	0.00	0.00	0.00	0.00	0.00	0.00	0.00	0.00	0.00	0.00	0.00						
130	0.00	0.00	0.00	0.00	0.00	0.00	0.00	0.00	0.00	0.00	0.00	0.00						
135	0.00	0.00	0.00	0.00	0.00	0.00	0.00	0.00	0.00	0.00	0.00	0.00						
140	0.00	0.00	0.00	0.00	0.00	0.00	0.00	0.00	0.00	0.00	0.00	0.00						
145	0.00	0.00	0.00	0.00	0.00	0.00	0.00	0.00	0.00	0.00	0.00	0.00						
150	0.00	0.00	0.00	0.00	0.00	0.00	0.00	0.00	0.00	0.00	0.00	0.00						
155	0.00	0.00	0.00	0.00	0.00	0.00	0.00	0.00	0.00	0.00	0.00	0.00						
160	0.00	0.00	0.00	0.00	0.00	0.00	0.00	0.00	0.00	0.00	0.00	0.00						
165	0.00	0.00	0.00	0.00	0.00	0.00	0.00	0.00	0.00	0.00	0.00	0.00						
170	0.00	0.00	0.00	0.00	0.00	0.00	0.00	0.00	0.00	0.00	0.00	0.00						
175	0.00	0.00	0.00	0.00	0.00	0.00	0.00	0.00	0.00	0.00	0.00	0.00						
180	0.00	0.00	0.00	0.00	0.00	0.00	0.00	0.00	0.00	0.00	0.00	0.00						

C Range: 0 - 360DEG  
C Interval: 30.0DEG  
Test Speed: HIGH  
Temperature:25.3DEG  
Operators:LPC  
Test Date:2021-10-22

γ Range: 0 - 120DEG  
γ Interval: 1.0DEG  
Test System:EVERFINE GO-2000B\_V1 SYSTEM V2.0.362  
Humidity:65.0%  
Test Distance:9.200m [K=1.0000]  
Remarks: