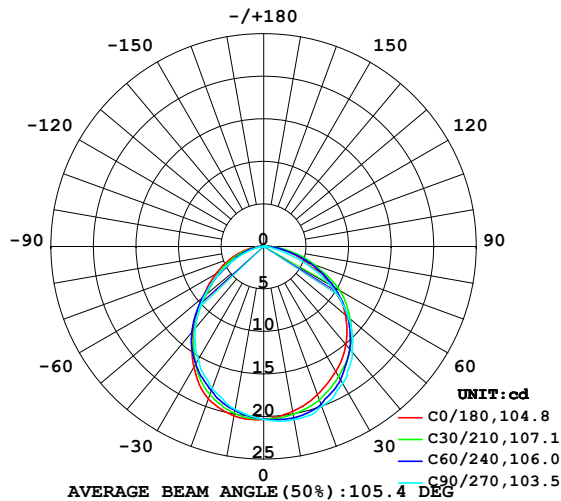


## LUMINAIRE PHOTOMETRIC TEST REPORT

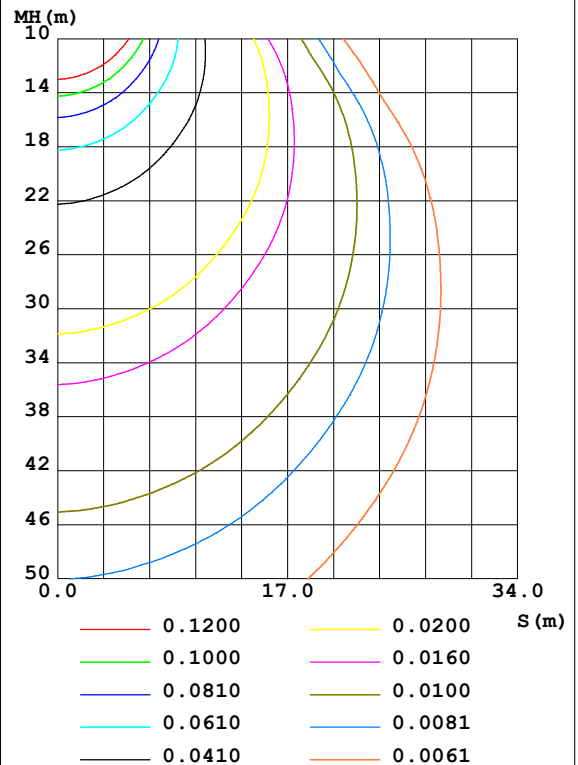
Test:U:24.00V I:0.3186A P:7.646W PF:1.000 Freq:50.00Hz Lamp Flux:0.776839x70 lm		
NAME: P01-24V-5050-70-DMX-RGBW(5000K)-B	TYPE:	WEIGHT:
SPEC.:	DIM.:	SERIAL No.:
MFR.: OLYMPIA	SUR.:1*0.014	Shielding Angle:

DATA OF LAMP		PHOTOMETRIC DATA				Eff: 7.11 lm/W
MODEL	5050	I <sub>max</sub> (cd)	20.73	S/MH (C0/180)	1.20	
NOMINAL POWER (W)	12	LOR (%)	100.0	S/MH (C90/270)	1.14	
RATED VOLTAGE (V)	24	TOTAL FLUX (lm)	54.379	η UP, DN (C0-180)	0.7, 53.5	
NOMINAL FLUX (lm)	0.776839	CIE CLASS	DIRECT	η UP, DN (C180-360)	0.5, 45.3	
LAMPS INSIDE	70	η up (%)	1.1	CIBSE SHR NOM	1.25	
TEST VOLTAGE (V)	24	η down (%)	98.9	CIBSE SHR MAX	1.35	

LUMINOUS INTENSITY DISTRIBUTION DIAGRAM



C0 PLANE ISOLUX DIAGRAM (UNIT:lx)



C Range: 0 - 360DEG  
 C Interval: 30.0DEG  
 Test Speed: HIGH  
 Temperature: 25.3DEG  
 Operators: LPC  
 Test Date: 2021-10-22

γ Range: 0 - 120DEG  
 γ Interval: 1.0DEG  
 Test System: EVERFINE GO-2000B\_V1 SYSTEM V2.0.362  
 Humidity: 65.0%  
 Test Distance: 9.200m [K=1.0000]  
 Remarks:

## ZONAL FLUX DIAGRAM

## ZONAL FLUX DIAGRAM:

$\gamma$	C0	C45	C90	C135	C180	C225	C270	C315	$\gamma$	$\Phi$ zone	$\Phi$ total	%lum, lamp
10	19.68	20.24	20.66	20.60	20.21	19.74	19.44	19.45	0- 10	1.925	1.925	3.54,3.54
20	18.52	19.46	19.99	20.03	19.05	18.28	17.76	17.90	10- 20	5.517	7.442	13.7,13.7
30	16.97	17.85	18.59	18.11	16.40	15.98	15.38	15.94	20- 30	8.288	15.73	28.9,28.9
40	15.04	15.77	16.14	15.00	13.00	12.91	12.47	13.75	30- 40	9.809	25.54	47,47
50	12.59	13.09	12.96	10.76	9.409	9.109	9.165	11.05	40- 50	9.799	35.34	65,65
60	9.004	9.936	8.932	6.783	6.530	5.709	5.612	8.109	50- 60	8.321	43.66	80.3,80.3
70	5.510	6.094	4.267	3.963	4.033	3.269	2.545	4.945	60- 70	5.907	49.57	91.1,91.1
80	2.470	2.651	0.8427	1.641	1.857	1.344	0.5390	2.179	70- 80	3.192	52.76	97,97
90	0.6696	0.4821	0.1407	0.3367	0.3811	0.2490	0.0403	0.4450	80- 90	1.018	53.77	98.9,98.9
100	0.1811	0.2186	0.1610	0.2362	0.1307	0.1583	0.0452	0.1533	90-100	0.2314	54.01	99.3,99.3
110	0.1809	0.2061	0.1910	0.2236	0.1307	0.1860	0.0754	0.1583	100-110	0.1837	54.19	99.7,99.7
120	0.2061	0.2111	0.2111	0.2287	0.1307	0.1935	0.1307	0.1508	110-120	0.1800	54.37	100,100
130	0	0	0	0	0	0	0	0	120-130	0.0088	54.38	100,100
140	0	0	0	0	0	0	0	0	130-140	0	54.38	100,100
150	0	0	0	0	0	0	0	0	140-150	0	54.38	100,100
160	0	0	0	0	0	0	0	0	150-160	0	54.38	100,100
170	0	0	0	0	0	0	0	0	160-170	0	54.38	100,100
180	0	0	0	0	0	0	0	0	170-180	0	54.38	100,100
DEG	LUMINOUS INTENSITY:cd									UNIT:lm		

Conical surface Flux(90deg): 30.543 lm

%lum = 56.2%

%lamp = 56.2%

Conical surface Flux(120deg): 43.658 lm

%lum = 80.3%

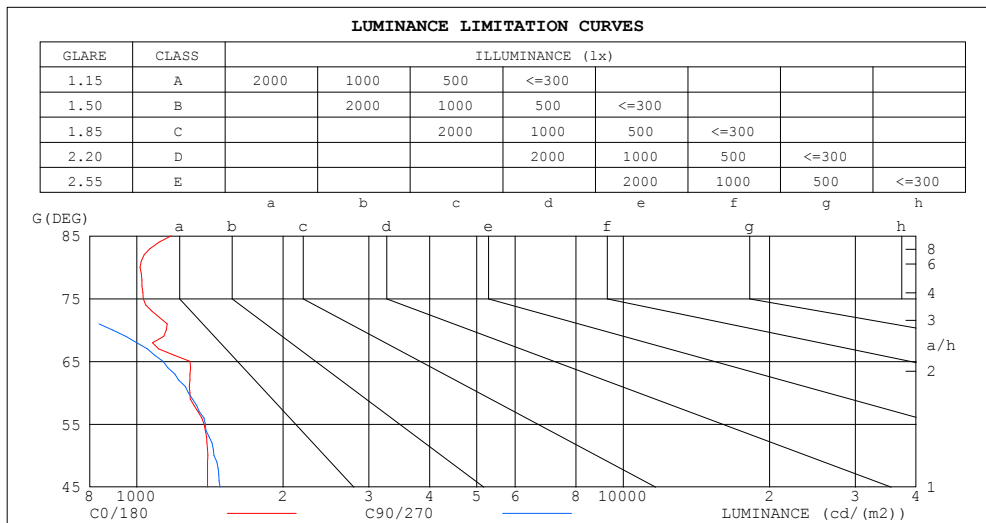
%lamp = 80.3%

C Range: 0 - 360DEG  
 C Interval: 30.0DEG  
 Test Speed: HIGH  
 Temperature:25.3DEG  
 Operators:LPC  
 Test Date:2021-10-22

$\gamma$  Range: 0 - 120DEG  
 $\gamma$  Interval: 1.0DEG  
 Test System:EVERFINE GO-2000B\_V1 SYSTEM V2.0.362  
 Humidity:65.0%  
 Test Distance:9.200m [K=1.0000]  
 Remarks:

## LUMINANCE LIMITATION CURVES

Test:U:24.00V I:0.3186A P:7.646W PF:1.000 Freq:50.00Hz Lamp Flux:0.776839x70 lm		
NAME: P01-24V-5050-70-DMX-RGBW(5000K)-B	TYPE:	WEIGHT:
SPEC.:	DIM.:	SERIAL No.:
MFR.: OLYMPIA	SUR.:1*0.014	Shielding Angle:



LUMINANCE cd/(m2)		
G (DEG)	C0/180	C90/270
85	1176	156
80	1016	347
75	1031	621
70	1151	891
65	1287	1133
60	1286	1276
55	1375	1383
50	1399	1441
45	1398	1483

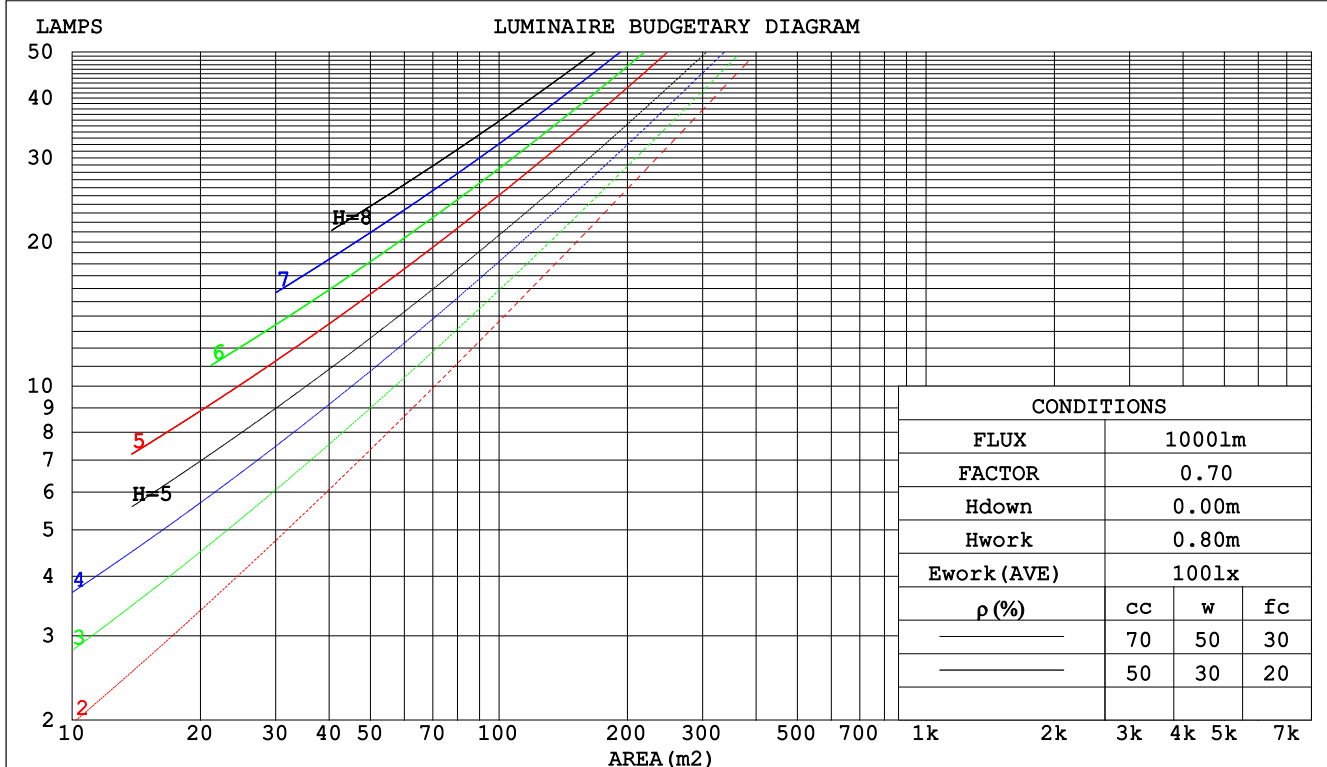
C Range: 0 - 360DEG  
C Interval: 30.0DEG  
Test Speed: HIGH  
Temperature:25.3DEG  
Operators:LPC  
Test Date:2021-10-22

$\gamma$  Range: 0 - 120DEG  
 $\gamma$  Interval: 1.0DEG  
Test System:EVERFINE GO-2000B\_V1 SYSTEM V2.0.362  
Humidity:65.0%  
Test Distance:9.200m [K=1.0000]  
Remarks:

## CU AND LUMINAIRE BUDGETARY ESTIMATE DIAGRAM

Test:U:24.00V I:0.3186A P:7.646W PF:1.000 Freq:50.00Hz Lamp Flux:0.776839x70 lm		
NAME: P01-24V-5050-70-DMX-RGBW(5000K)-B	TYPE:	WEIGHT:
SPEC.:	DIM.:	SERIAL No.:
MFR.: OLYMPIA	SUR.:1*0.014	Shielding Angle:

pcc	80%			70%			50%			30%			10%			0
pw	50%	30%	10%	50%	30%	10%	50%	30%	10%	50%	30%	10%	50%	30%	10%	0
pfc	20%			20%			20%			20%			20%			0
RCR	RCR:Room Cavity Ratio						Coefficients of Utilization(CU)									
0.0	1.19	1.19	1.19	1.16	1.16	1.16	1.10	1.10	1.10	1.06	1.06	1.06	1.01	1.01	1.01	.99
1.0	1.04	1.00	.96	1.02	.98	.95	.97	.94	.91	.93	.91	.88	.89	.87	.86	.83
2.0	.91	.85	.79	.89	.83	.78	.86	.80	.76	.82	.78	.74	.79	.75	.72	.70
3.0	.80	.72	.66	.79	.71	.65	.76	.69	.64	.73	.67	.63	.70	.66	.62	.59
4.0	.71	.63	.56	.70	.62	.56	.67	.60	.55	.65	.59	.54	.63	.58	.53	.51
5.0	.64	.55	.49	.63	.55	.48	.61	.53	.48	.58	.52	.47	.57	.51	.46	.44
6.0	.58	.49	.43	.57	.48	.42	.55	.47	.42	.53	.46	.41	.51	.46	.41	.39
7.0	.52	.44	.38	.52	.43	.38	.50	.43	.37	.48	.42	.37	.47	.41	.37	.35
8.0	.48	.39	.34	.47	.39	.34	.46	.38	.33	.44	.38	.33	.43	.37	.33	.31
9.0	.44	.36	.30	.43	.36	.30	.42	.35	.30	.41	.35	.30	.40	.34	.30	.28
10.0	.41	.33	.28	.40	.33	.28	.39	.32	.27	.38	.32	.27	.37	.31	.27	.25



C Range: 0 - 360DEG  
 C Interval: 30.0DEG  
 Test Speed: HIGH  
 Temperature:25.3DEG  
 Operators:LPC  
 Test Date:2021-10-22

γ Range: 0 - 120DEG  
 γ Interval: 1.0DEG  
 Test System:EVERFINE GO-2000B\_V1 SYSTEM V2.0.362  
 Humidity:65.0%  
 Test Distance:9.200m [K=1.0000]  
 Remarks:

### WEC AND CCEC

Test:U:24.00V I:0.3186A P:7.646W PF:1.000 Freq:50.00Hz Lamp Flux:0.776839x70 lm		
NAME: P01-24V-5050-70-DMX-RGBW(5000K)-B	TYPE:	WEIGHT:
SPEC.:	DIM.:	SERIAL No.:
MFR.: OLYMPIA	SUR.:1*0.014	Shielding Angle:

pcc	80%			70%			50%			30%			10%			0	
pw	50%	30%	10%	50%	30%	10%	50%	30%	10%	50%	30%	10%	50%	30%	10%	0	
pfc	20%			20%			20%			20%			20%			0	
RCR	RCR:Room Cavity Ratio						Wall Exitance Coefficients(WEC)										
0.0																	
1.0	.299	.170	.054	.292	.166	.053	.278	.159	.051	.265	.153	.049	.253	.147	.047		
2.0	.282	.154	.047	.275	.152	.047	.263	.146	.045	.252	.141	.044	.241	.137	.043		
3.0	.262	.139	.042	.256	.137	.041	.245	.133	.040	.235	.129	.039	.226	.125	.039		
4.0	.242	.126	.037	.237	.124	.037	.227	.121	.036	.219	.117	.035	.210	.114	.035		
5.0	.224	.114	.033	.220	.113	.033	.211	.110	.032	.203	.107	.032	.196	.105	.031		
6.0	.209	.105	.030	.205	.103	.030	.197	.101	.029	.190	.099	.029	.183	.096	.029		
7.0	.195	.096	.027	.191	.095	.027	.184	.093	.027	.178	.091	.027	.172	.089	.026		
8.0	.182	.089	.025	.179	.088	.025	.173	.086	.025	.167	.085	.024	.162	.083	.024		
9.0	.171	.083	.023	.168	.082	.023	.163	.080	.023	.157	.079	.023	.152	.077	.022		
10.0	.161	.077	.021	.158	.076	.021	.153	.075	.021	.149	.074	.021	.144	.073	.021		

pcc	80%			70%			50%			30%			10%			0
pw	50%	30%	10%	50%	30%	10%	50%	30%	10%	50%	30%	10%	50%	30%	10%	0
pfc	20%			20%			20%			20%			20%			0
RCR	RCR:Room Cavity Ratio						Ceiling Cavity Exitance Coefficients(CCEC)									
0.0	.199	.199	.199	.170	.170	.170	.116	.116	.116	.067	.067	.067	.021	.021	.021	
1.0	.188	.165	.144	.161	.141	.124	.110	.097	.086	.063	.056	.050	.020	.018	.016	
2.0	.179	.141	.108	.154	.121	.093	.105	.084	.065	.061	.049	.038	.019	.016	.012	
3.0	.171	.123	.084	.147	.106	.073	.101	.074	.051	.058	.043	.030	.019	.014	.010	
4.0	.164	.110	.068	.141	.095	.059	.097	.066	.042	.056	.039	.025	.018	.013	.008	
5.0	.156	.099	.057	.134	.086	.049	.093	.060	.035	.054	.035	.021	.017	.011	.007	
6.0	.149	.091	.049	.128	.079	.042	.089	.055	.030	.051	.032	.018	.017	.011	.006	
7.0	.143	.084	.043	.123	.073	.037	.085	.051	.026	.049	.030	.016	.016	.010	.005	
8.0	.136	.078	.038	.117	.068	.033	.081	.047	.023	.047	.028	.014	.015	.009	.005	
9.0	.130	.073	.034	.112	.063	.030	.078	.045	.021	.045	.026	.013	.015	.009	.004	
10.0	.125	.069	.032	.108	.060	.027	.075	.042	.020	.044	.025	.012	.014	.008	.004	

C Range: 0 - 360DEG  
C Interval: 30.0DEG  
Test Speed: HIGH  
Temperature:25.3DEG  
Operators:LPC  
Test Date:2021-10-22

γ Range: 0 - 120DEG  
γ Interval: 1.0DEG  
Test System:EVERFINE GO-2000B\_V1 SYSTEM V2.0.362  
Humidity:65.0%  
Test Distance:9.200m [K=1.0000]  
Remarks:

UGR(Unified Glare Rating) Table

Test:U:24.00V I:0.3186A P:7.646W PF:1.000 Freq:50.00Hz Lamp Flux:0.776839x70 lm											
NAME: P01-24V-5050-70-DMX-RGBW(5000K)-B					TYPE:			WEIGHT:			
SPEC.:					DIM.:			SERIAL No.:			
MFR.: OLYMPIA					SUR.:1*0.014			Shielding Angle:			
ceiling/cavity	0.7	0.7	0.5	0.5	0.3	0.7	0.7	0.5	0.5	0.3	
walls	0.5	0.3	0.5	0.3	0.3	0.5	0.3	0.5	0.3	0.3	
working plane	0.2	0.2	0.2	0.2	0.2	0.2	0.2	0.2	0.2	0.2	
Room dimensions		Viewed crosswise					Viewed endwise				
x = 2H y = 2H	24.7	26.2	25.0	26.4	26.6	24.5	26.0	24.8	26.2	26.4	
	3H	26.1	27.5	26.4	27.7	28.0	25.7	27.0	26.0	27.3	27.5
	4H	26.7	28.0	27.0	28.2	28.5	26.0	27.2	26.3	27.5	27.8
	6H	27.1	28.3	27.4	28.6	28.9	26.0	27.2	26.4	27.5	27.8
	8H	27.3	28.4	27.6	28.7	29.1	26.0	27.2	26.4	27.5	27.8
	12H	27.4	28.5	27.8	28.9	29.2	26.0	27.1	26.3	27.4	27.7
4H	2H	25.4	26.6	25.7	26.9	27.2	25.2	26.5	25.5	26.8	27.0
	3H	27.0	28.1	27.4	28.4	28.8	26.6	27.7	27.0	28.0	28.4
	4H	27.7	28.8	28.1	29.1	29.4	27.0	28.1	27.4	28.4	28.7
	6H	28.3	29.2	28.7	29.6	30.0	27.2	28.1	27.6	28.5	28.9
	8H	28.5	29.4	29.0	29.8	30.2	27.2	28.1	27.7	28.5	28.9
	12H	28.7	29.5	29.2	29.9	30.3	27.2	28.0	27.7	28.4	28.8
8H	4H	28.0	28.9	28.4	29.3	29.7	27.4	28.2	27.8	28.6	29.0
	6H	28.8	29.5	29.3	29.9	30.4	27.8	28.5	28.2	28.9	29.3
	8H	29.1	29.8	29.6	30.2	30.7	27.9	28.5	28.3	28.9	29.4
	12H	29.4	30.0	29.9	30.4	30.9	27.9	28.4	28.4	28.9	29.4
12H	4H	28.0	28.8	28.5	29.2	29.6	27.4	28.2	27.9	28.6	29.0
	6H	28.8	29.5	29.3	29.9	30.4	27.9	28.5	28.4	28.9	29.4
	8H	29.2	29.8	29.7	30.2	30.7	28.0	28.6	28.5	29.0	29.5
Variations with the observer position at spacings:											
S = 1.0H	+ 0.2 / - 0.2					+ 0.2 / - 0.2					
1.5H	+ 0.3 / - 0.5					+ 0.2 / - 0.4					
2.0H	+ 0.2 / - 0.5					+ 0.2 / - 0.4					

CIE Pub.117, 54.38 lm Total Lamp Luminous Flux Correct (8log(F/F0) = -10.1)

C Range: 0 - 360DEG  
C Interval: 30.0DEG  
Test Speed: HIGH  
Temperature:25.3DEG  
Operators:LPC  
Test Date:2021-10-22

γ Range: 0 - 120DEG  
γ Interval: 1.0DEG  
Test System:EVERFINE GO-2000B\_V1 SYSTEM V2.0.362  
Humidity:65.0%  
Test Distance:9.200m [K=1.0000]  
Remarks:

### UTILIZATION FACTORS TABLE

Test:U:24.00V I:0.3186A P:7.646W PF:1.000 Freq:50.00Hz Lamp Flux:0.776839x70 lm		
NAME: P01-24V-5050-70-DMX-RGBW(5000K)-B	TYPE:	WEIGHT:
SPEC.:	DIM.:	SERIAL No.:
MFR.: OLYMPIA	SUR.:1*0.014	Shielding Angle:

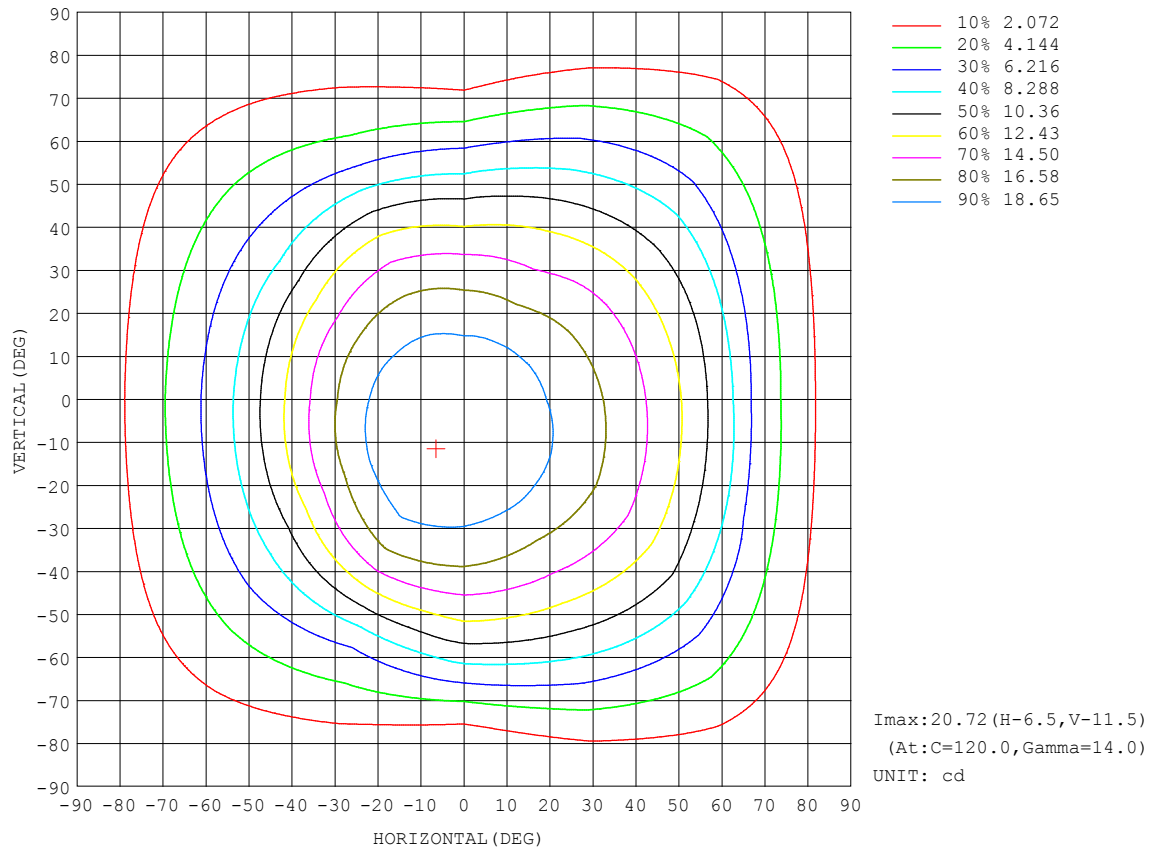
REFLECTANCE										
Ceiling	0.8	0.8	0.8	0.7	0.7	0.7	0.5	0.5	0.5	0
Walls	0.7	0.5	0.3	0.7	0.5	0.3	0.7	0.5	0.3	0
Working plane	0.2	0.2	0.2	0.2	0.2	0.2	0.2	0.2	0.2	0
ROOM INDEX	UTILIZATION FACTORS (PERCENT)    k(RI) × RCR = 5									
k = 0.60	59	47	41	58	47	40	57	47	40	34
0.80	69	57	50	68	57	50	66	56	50	43
1.00	77	66	59	76	66	59	74	67	58	51
1.25	84	74	67	83	73	67	80	72	66	59
1.50	89	79	73	87	78	72	84	77	71	64
2.00	96	87	81	94	86	80	90	84	79	71
2.50	99	92	86	97	90	85	93	88	83	75
3.00	103	96	91	100	94	89	96	91	87	79
4.00	106	101	96	104	99	95	100	96	92	83
5.00	109	104	100	106	102	98	102	98	95	86
ROOM INDEX	UF (total)									Direct
According to DIN EN 13032-2 2004										
Suspended										
SHRNM = 1.25										

C Range: 0 - 360DEG  
C Interval: 30.0DEG  
Test Speed: HIGH  
Temperature:25.3DEG  
Operators:LPC  
Test Date:2021-10-22

γ Range: 0 - 120DEG  
γ Interval: 1.0DEG  
Test System:EVERFINE GO-2000B\_V1 SYSTEM V2.0.362  
Humidity:65.0%  
Test Distance:9.200m [K=1.0000]  
Remarks:

## ISOCANDELA DIAGRAM

Test:U:24.00V I:0.3186A P:7.646W PF:1.000 Freq:50.00Hz Lamp Flux:0.776839x70 lm		
NAME: P01-24V-5050-70-DMX-RGBW(5000K)-B	TYPE:	WEIGHT:
SPEC.:	DIM.:	SERIAL No.:
MFR.: OLYMPIA	SUR.:1*0.014	Shielding Angle:



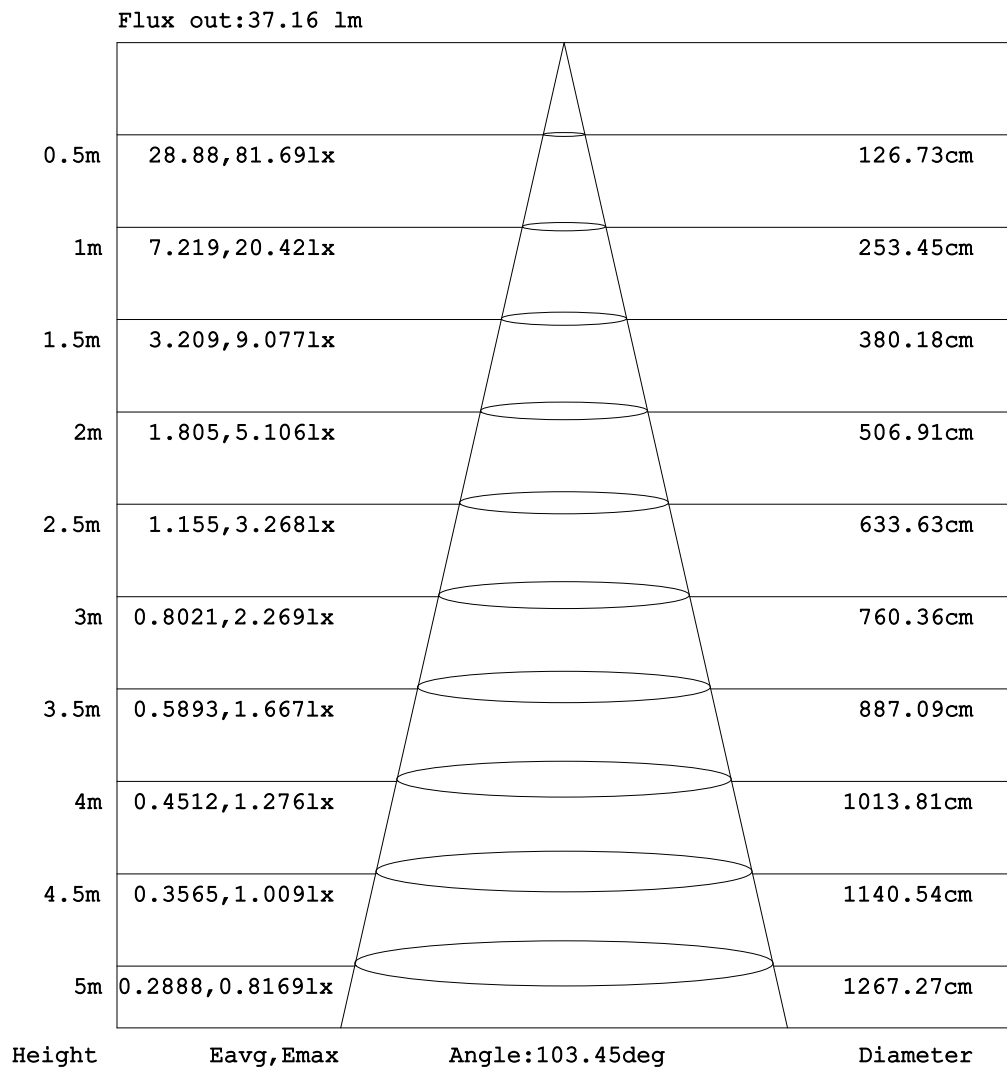
C Range: 0 - 360DEG  
C Interval: 30.0DEG  
Test Speed: HIGH  
Temperature:25.3DEG  
Operators:LPC  
Test Date:2021-10-22

γ Range: 0 - 120DEG  
γ Interval: 1.0DEG  
Test System:EVERFINE GO-2000B\_V1 SYSTEM V2.0.362  
Humidity:65.0%  
Test Distance:9.200m [K=1.0000]  
Remarks:



### AAI Figure

Test:U:24.00V I:0.3186A P:7.646W PF:1.000 Freq:50.00Hz Lamp Flux:0.776839x70 lm		
NAME: P01-24V-5050-70-DMX-RGBW(5000K)-B	TYPE:	WEIGHT:
SPEC.:	DIM.:	SERIAL No.:
MFR.: OLYMPIA	SUR.:1*0.014	Shielding Angle:



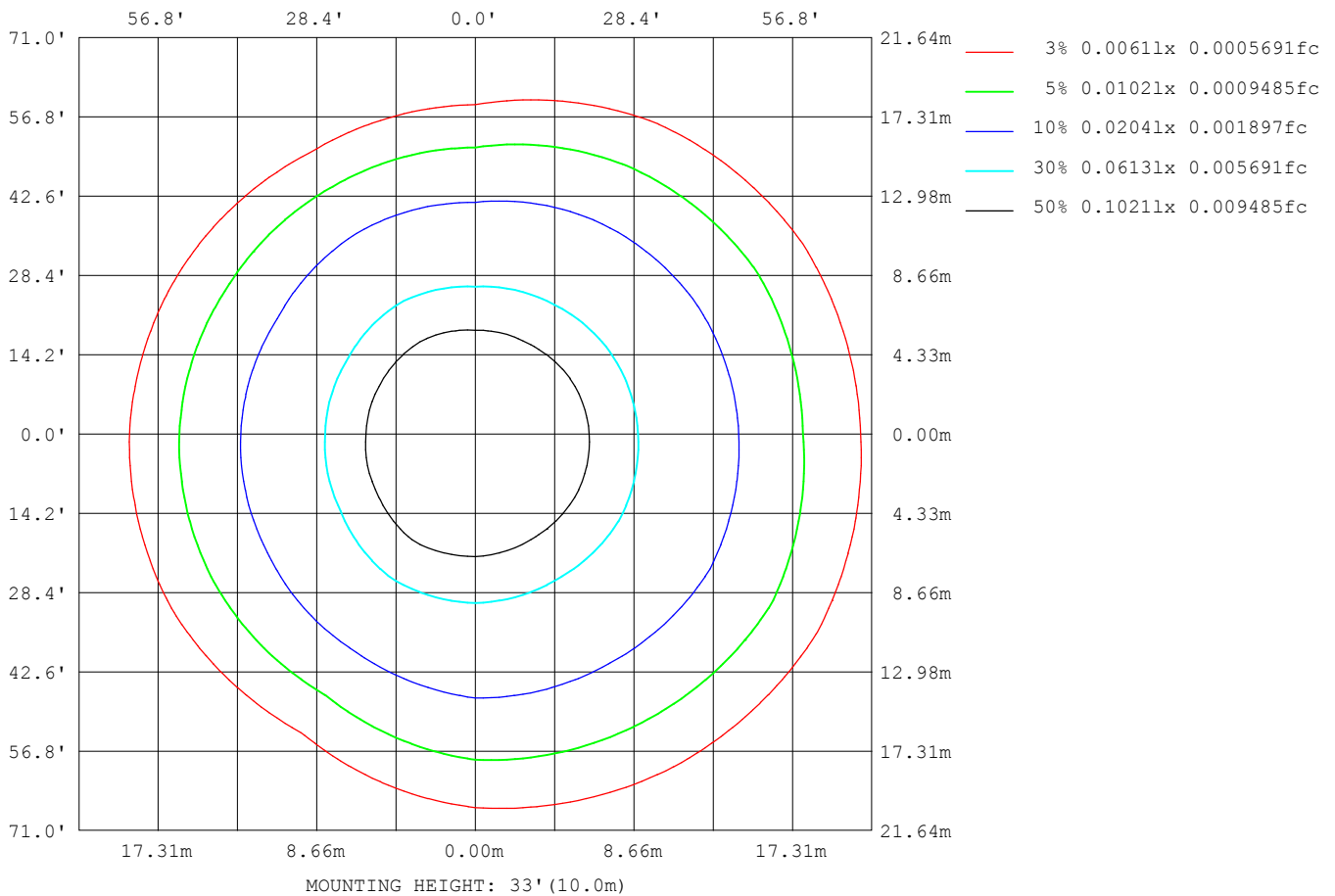
Note:The Curves indicate the illuminated area and the average illumination when the luminaire is at different distance.

C Range: 0 - 360DEG  
C Interval: 30.0DEG  
Test Speed: HIGH  
Temperature:25.3DEG  
Operators:LPC  
Test Date:2021-10-22

γ Range: 0 - 120DEG  
γ Interval: 1.0DEG  
Test System:EVERFINE GO-2000B\_V1 SYSTEM V2.0.362  
Humidity:65.0%  
Test Distance:9.200m [K=1.0000]  
Remarks:

# ISOLUX DIAGRAM

Test:U:24.00V I:0.3186A P:7.646W PF:1.000 Freq:50.00Hz Lamp Flux:0.776839x70 lm		
NAME: P01-24V-5050-70-DMX-RGBW(5000K)-B	TYPE:	WEIGHT:
SPEC.:	DIM.:	SERIAL No.:
MFR.: OLYMPIA	SUR.:1*0.014	Shielding Angle:



C Range: 0 - 360DEG  
C Interval: 30.0DEG  
Test Speed: HIGH  
Temperature:25.3DEG  
Operators:LPC  
Test Date:2021-10-22

γ Range: 0 - 120DEG  
γ Interval: 1.0DEG  
Test System:EVERFINE GO-2000B\_V1 SYSTEM V2.0.362  
Humidity:65.0%  
Test Distance:9.200m [K=1.0000]  
Remarks:

## LED Avg.L Report

Test:U:24.00V I:0.3186A P:7.646W PF:1.000 Freq:50.00Hz Lamp Flux:0.776839x70 lm		
NAME: P01-24V-5050-70-DMX-RGBW(5000K)-B	TYPE:	WEIGHT:
SPEC.:	DIM.:	SERIAL No.:
MFR.: OLYMPIA	SUR.:1*0.014	Shielding Angle:

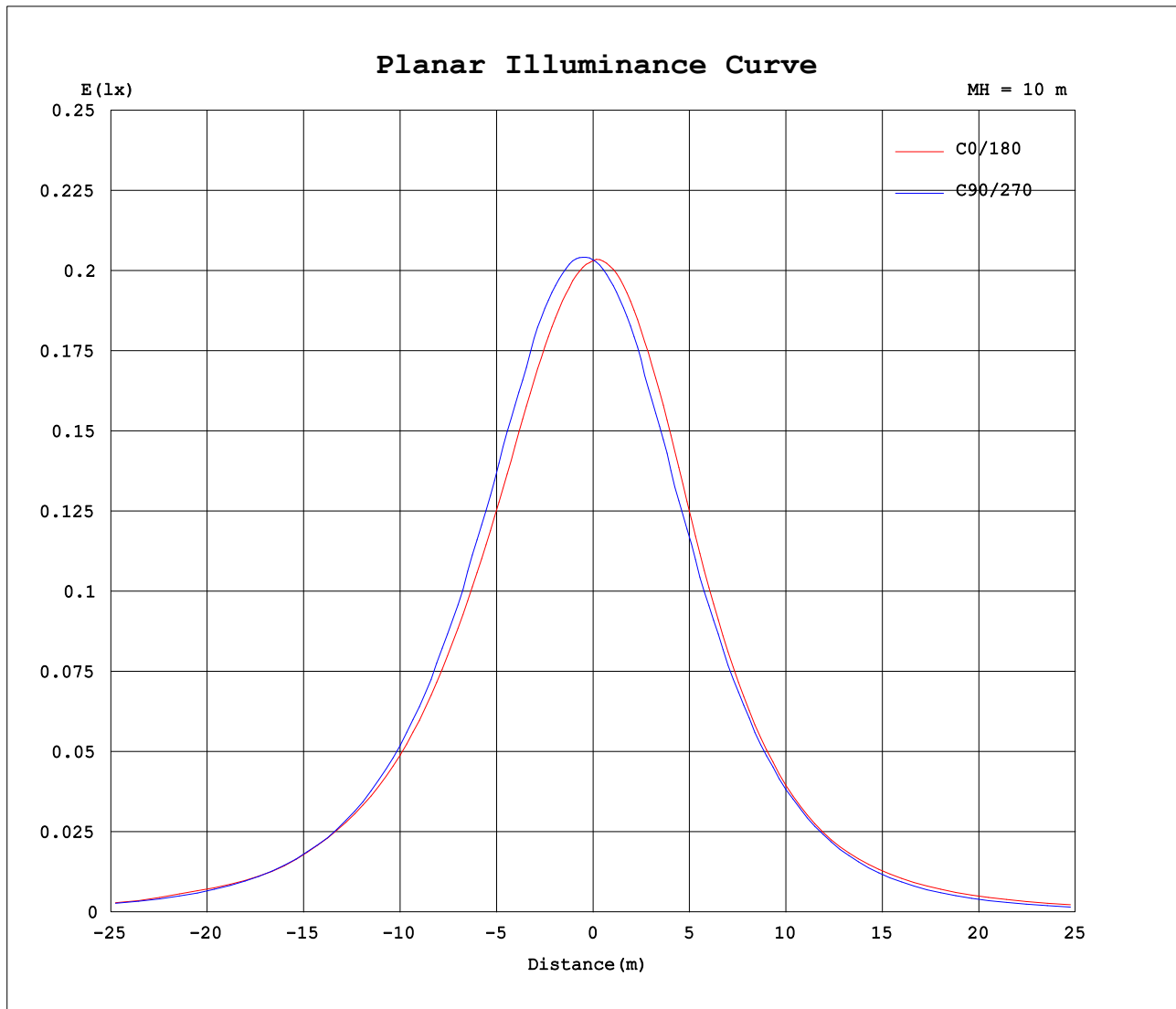
AvgL	cd/m2
L_0~180 (65) av	1085
L_0~180 (75) av	917
L_0~180 (85) av	989
L_90~270 (65) av	904
L_90~270 (75) av	501
L_90~270 (85) av	128
L_45 (65) av	1025
L_45 (75) av	908
L_45 (85) av	814

Standard: GB/T 29293-2012

C Range: 0 - 360DEG  
 C Interval: 30.0DEG  
 Test Speed: HIGH  
 Temperature:25.3DEG  
 Operators:LPC  
 Test Date:2021-10-22

γ Range: 0 - 120DEG  
 γ Interval: 1.0DEG  
 Test System:EVERFINE GO-2000B\_V1 SYSTEM V2.0.362  
 Humidity:65.0%  
 Test Distance:9.200m [K=1.0000]  
 Remarks:

## Planar Illuminance Curve



C Range: 0 - 360DEG  
C Interval: 30.0DEG  
Test Speed: HIGH  
Temperature: 25.3DEG  
Operators: LPC  
Test Date: 2021-10-22

$\gamma$  Range: 0 - 120DEG  
 $\gamma$  Interval: 1.0DEG  
Test System: EVERFINE GO-2000B\_V1 SYSTEM V2.0.362  
Humidity: 65.0%  
Test Distance: 9.200m [K=1.0000]  
Remarks:

## LUMINOUS DISTRIBUTION INTENSITY DATA

Test:U:24.00V I:0.3186A P:7.646W PF:1.000 Freq:50.00Hz Lamp Flux:0.776839x70 lm		
NAME: P01-24V-5050-70-DMX-RGBW(5000K)-B	TYPE:	WEIGHT:
SPEC.:	DIM.:	SERIAL No.:
MFR.: OLYMPIA	SUR.:1*0.014	Shielding Angle:

Table--1

UNIT: cd

C (DEG) γ (DEG)	0	30	60	90	120	150	180	210	240	270	300	330						
0	20.3	20.3	20.3	20.3	20.3	20.3	20.3	20.3	20.3	20.3	20.3	20.3						
5	20.1	20.2	20.4	20.6	20.6	20.6	20.4	20.2	20.0	19.9	19.9	20.0						
10	19.7	20.0	20.4	20.7	20.7	20.5	20.2	19.9	19.6	19.4	19.4	19.5						
15	19.2	19.7	20.2	20.6	20.7	20.2	19.7	19.3	19.0	18.6	18.7	18.9						
20	18.5	19.2	19.8	20.0	20.4	19.7	19.1	18.5	18.0	17.8	17.7	18.1						
25	17.8	18.5	18.9	19.5	19.6	18.8	17.9	17.4	17.1	16.6	16.6	17.3						
30	17.0	17.6	18.1	18.6	18.8	17.4	16.4	16.0	16.0	15.4	15.5	16.4						
35	16.1	16.8	16.9	17.4	17.7	15.7	14.8	14.4	14.7	14.0	14.2	15.4						
40	15.0	15.8	15.7	16.1	16.1	13.9	13.0	12.6	13.2	12.5	13.2	14.3						
45	13.8	14.6	14.4	14.7	14.0	11.9	11.2	10.8	11.3	10.8	11.9	13.0						
50	12.6	13.3	12.9	13.0	11.6	9.98	9.41	8.84	9.38	9.17	10.4	11.7						
55	11.0	11.9	11.3	11.1	9.03	8.31	7.91	7.26	7.41	7.35	8.97	10.3						
60	9.00	10.3	9.56	8.93	6.72	6.84	6.53	5.98	5.44	5.61	7.43	8.79						
65	7.61	8.31	7.70	6.71	5.10	5.42	5.23	4.72	4.05	3.99	5.92	7.13						
70	5.51	6.37	5.81	4.27	3.85	4.07	4.03	3.55	2.99	2.55	4.43	5.46						
75	3.74	4.76	3.97	2.25	2.59	2.85	2.91	2.46	2.01	1.38	3.02	4.01						
80	2.47	2.97	2.33	0.84	1.53	1.75	1.86	1.52	1.16	0.54	1.77	2.59						
85	1.43	1.50	1.06	0.19	0.74	0.88	0.98	0.77	0.52	0.12	0.80	1.41						
90	0.67	0.61	0.36	0.14	0.32	0.35	0.38	0.31	0.19	0.04	0.27	0.62						
95	0.28	0.22	0.23	0.15	0.24	0.23	0.13	0.17	0.16	0.05	0.15	0.25						
100	0.18	0.21	0.23	0.16	0.24	0.23	0.13	0.16	0.16	0.05	0.15	0.16						
105	0.18	0.21	0.20	0.19	0.22	0.23	0.13	0.16	0.16	0.08	0.14	0.16						
110	0.18	0.21	0.20	0.19	0.22	0.23	0.13	0.16	0.21	0.08	0.16	0.16						
115	0.18	0.21	0.21	0.20	0.22	0.23	0.13	0.16	0.21	0.11	0.16	0.16						
120	0.21	0.21	0.21	0.21	0.23	0.23	0.13	0.18	0.21	0.13	0.14	0.16						
125	0.00	0.00	0.00	0.00	0.00	0.00	0.00	0.00	0.00	0.00	0.00	0.00						
130	0.00	0.00	0.00	0.00	0.00	0.00	0.00	0.00	0.00	0.00	0.00	0.00						
135	0.00	0.00	0.00	0.00	0.00	0.00	0.00	0.00	0.00	0.00	0.00	0.00						
140	0.00	0.00	0.00	0.00	0.00	0.00	0.00	0.00	0.00	0.00	0.00	0.00						
145	0.00	0.00	0.00	0.00	0.00	0.00	0.00	0.00	0.00	0.00	0.00	0.00						
150	0.00	0.00	0.00	0.00	0.00	0.00	0.00	0.00	0.00	0.00	0.00	0.00						
155	0.00	0.00	0.00	0.00	0.00	0.00	0.00	0.00	0.00	0.00	0.00	0.00						
160	0.00	0.00	0.00	0.00	0.00	0.00	0.00	0.00	0.00	0.00	0.00	0.00						
165	0.00	0.00	0.00	0.00	0.00	0.00	0.00	0.00	0.00	0.00	0.00	0.00						
170	0.00	0.00	0.00	0.00	0.00	0.00	0.00	0.00	0.00	0.00	0.00	0.00						
175	0.00	0.00	0.00	0.00	0.00	0.00	0.00	0.00	0.00	0.00	0.00	0.00						
180	0.00	0.00	0.00	0.00	0.00	0.00	0.00	0.00	0.00	0.00	0.00	0.00						

C Range: 0 - 360DEG  
C Interval: 30.0DEG  
Test Speed: HIGH  
Temperature:25.3DEG  
Operators:LPC  
Test Date:2021-10-22

γ Range: 0 - 120DEG  
γ Interval: 1.0DEG  
Test System:EVERFINE GO-2000B\_V1 SYSTEM V2.0.362  
Humidity:65.0%  
Test Distance:9.200m [K=1.0000]  
Remarks: