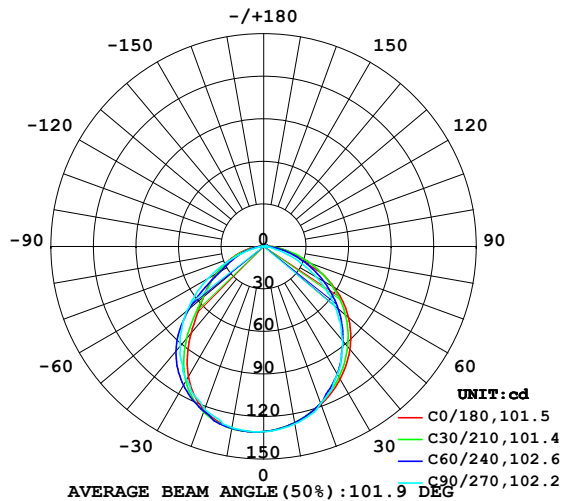


LUMINAIRE PHOTOMETRIC TEST REPORT

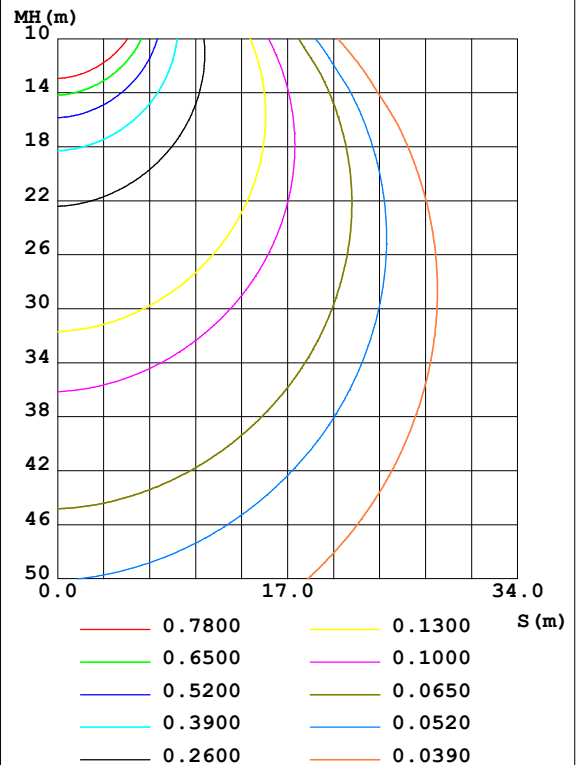
Test:U:24.00V I:0.3164A P:7.594W PF:1.000 Freq:50.00Hz Lamp Flux:4.84867x70 lm		
NAME: P01-24V-5050-70-DMX-RGBW(5000K)-W	TYPE:	WEIGHT:
SPEC.:	DIM.:	SERIAL No.:
MFR.: OLYMPIA	SUR.:1*0.014	Shielding Angle:

DATA OF LAMP		PHOTOMETRIC DATA Eff: 44.70 lm/W			
MODEL	5050	I _{max} (cd)	131.1	S/MH(C0/180)	1.21
NOMINAL POWER(W)	12	LOR(%)	100.0	S/MH(C90/270)	1.24
RATED VOLTAGE(V)	24	TOTAL FLUX(lm)	339.41	η UP,DN(C0-180)	0.9,48.9
NOMINAL FLUX(lm)	4.84867	CIE CLASS	DIRECT	η UP,DN(C180-360)	0.6,49.6
LAMPS INSIDE	70	η up(%)	1.5	CIBSE SHR NOM	1.25
TEST VOLTAGE(V)	24	η down(%)	98.5	CIBSE SHR MAX	1.35

LUMINOUS INTENSITY DISTRIBUTION DIAGRAM



C0 PLANE ISOLUX DIAGRAM (UNIT:lx)



C Range: 0 - 360DEG
 C Interval: 30.0DEG
 Test Speed: HIGH
 Temperature:25.3DEG
 Operators:LPC
 Test Date:2021-10-22

γ Range: 0 - 120DEG
 γ Interval: 1.0DEG
 Test System:EVERFINE GO-2000B_V1 SYSTEM V2.0.362
 Humidity:65.0%
 Test Distance:9.200m [K=1.0000]
 Remarks:

ZONAL FLUX DIAGRAM

ZONAL FLUX DIAGRAM:

γ	C0	C45	C90	C135	C180	C225	C270	C315	γ	Φ zone	Φ total	%lum, lamp
10	126.3	126.2	127.1	128.5	130.0	130.3	129.7	128.2	0- 10	12.36	12.36	3.64, 3.64
20	118.4	117.7	117.7	120.9	122.8	123.9	122.2	120.4	10- 20	35.29	47.65	14, 14
30	108.0	105.1	104.0	106.2	106.2	111.5	108.7	108.9	20- 30	52.78	100.4	29.6, 29.6
40	94.70	89.55	86.45	84.16	79.63	90.41	91.63	94.50	30- 40	61.78	162.2	47.8, 47.8
50	78.12	72.09	65.19	57.49	55.43	62.28	71.03	77.53	40- 50	60.42	222.6	65.6, 65.6
60	56.69	52.31	42.56	35.02	38.71	36.73	45.47	57.51	50- 60	50.41	273.0	80.4, 80.4
70	33.31	32.04	20.35	20.58	23.72	21.22	21.19	35.99	60- 70	35.35	308.4	90.9, 90.9
80	15.32	14.11	4.957	8.954	11.19	8.813	3.749	16.08	70- 80	19.32	327.7	96.6, 96.6
90	4.390	3.230	1.161	2.508	2.770	1.803	0.5528	3.520	80- 90	6.555	334.3	98.5, 98.5
100	1.488	1.837	1.363	1.998	1.201	1.219	0.7733	1.234	90-100	1.865	336.1	99, 99
110	1.528	1.915	1.583	2.078	1.317	1.375	0.9348	1.277	100-110	1.565	337.7	99.5, 99.5
120	1.739	1.927	1.729	2.206	1.412	1.545	1.166	1.314	110-120	1.621	339.3	100, 100
130	0	0	0	0	0	0	0	0	120-130	0.0789	339.4	100, 100
140	0	0	0	0	0	0	0	0	130-140	0	339.4	100, 100
150	0	0	0	0	0	0	0	0	140-150	0	339.4	100, 100
160	0	0	0	0	0	0	0	0	150-160	0	339.4	100, 100
170	0	0	0	0	0	0	0	0	160-170	0	339.4	100, 100
180	0	0	0	0	0	0	0	0	170-180	0	339.4	100, 100
DEG	LUMINOUS INTENSITY:cd									UNIT:lm		

Conical surface Flux(90deg): 193.22 lm

%lum = 56.9%

%lamp = 56.9%

Conical surface Flux(120deg): 273.05 lm

%lum = 80.4%

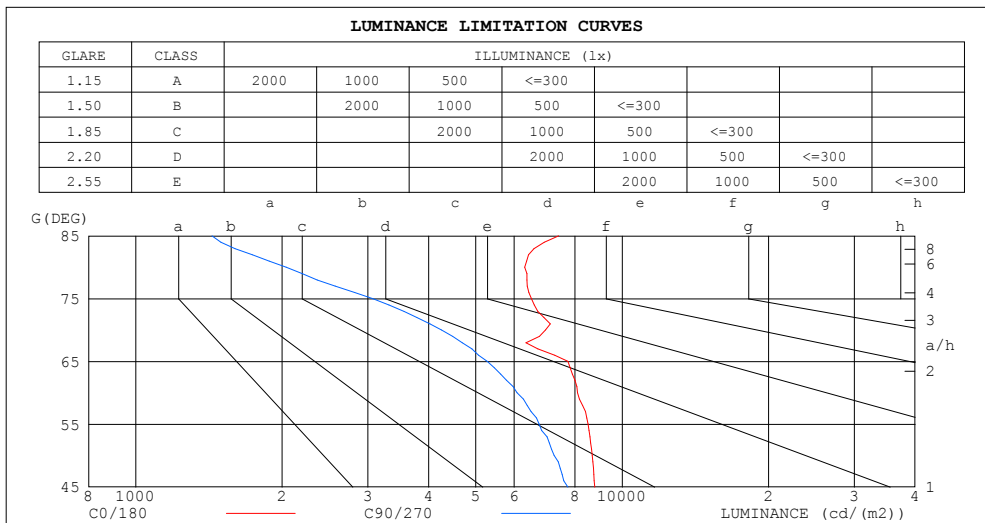
%lamp = 80.4%

C Range: 0 - 360DEG
 C Interval: 30.0DEG
 Test Speed: HIGH
 Temperature:25.3DEG
 Operators:LPC
 Test Date:2021-10-22

γ Range: 0 - 120DEG
 γ Interval: 1.0DEG
 Test System:EVERFINE GO-2000B_V1 SYSTEM V2.0.362
 Humidity:65.0%
 Test Distance:9.200m [K=1.0000]
 Remarks:

LUMINANCE LIMITATION CURVES

Test:U:24.00V I:0.3164A P:7.594W PF:1.000 Freq:50.00Hz Lamp Flux:4.84867x70 lm		
NAME: P01-24V-5050-70-DMX-RGBW(5000K) -W	TYPE:	WEIGHT:
SPEC.:	DIM.:	SERIAL No.:
MFR.: OLYMPIA	SUR.:1*0.014	Shielding Angle:



LUMINANCE cd/(m2)		
G (DEG)	C0/180	C90/270
85	7408	1435
80	6302	2039
75	6511	3069
70	6957	4251
65	7730	5283
60	8099	6080
55	8508	6748
50	8681	7244
45	8780	7734

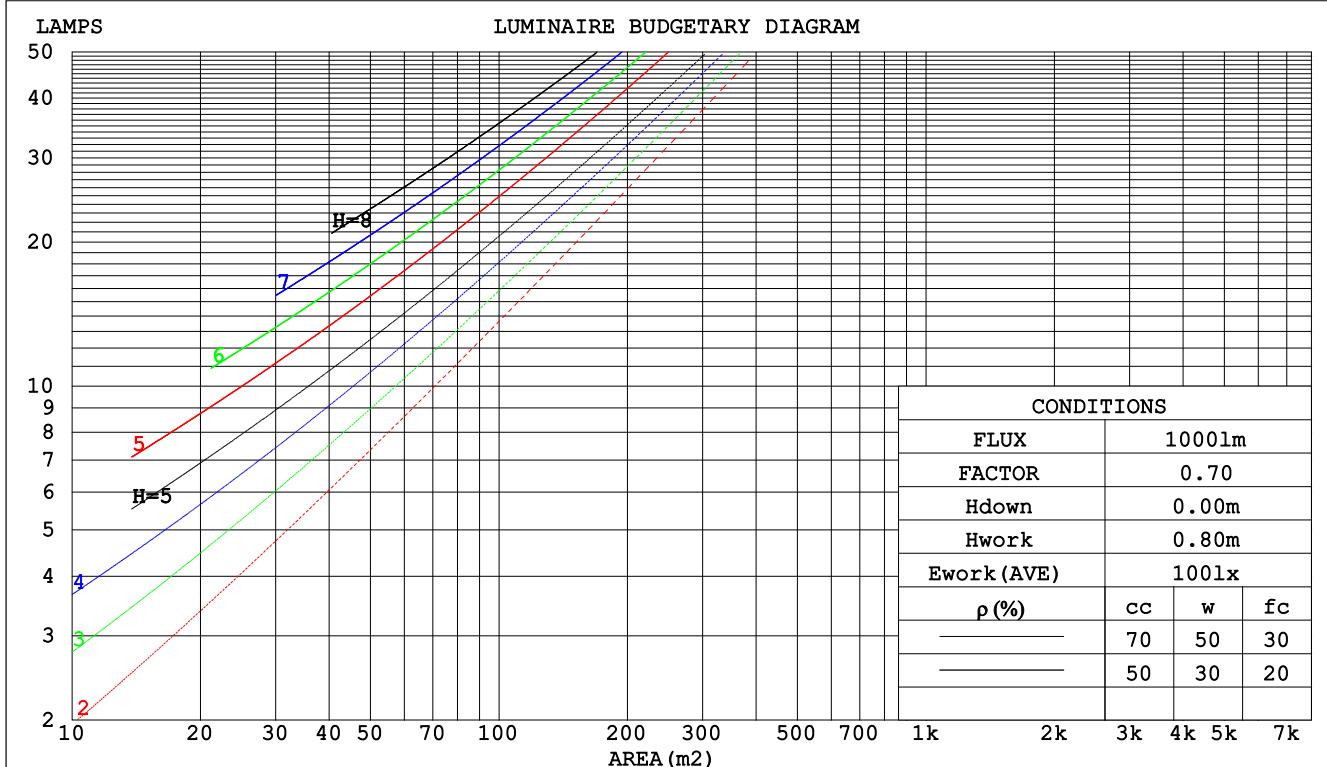
C Range: 0 - 360DEG
C Interval: 30.0DEG
Test Speed: HIGH
Temperature:25.3DEG
Operators:LPC
Test Date:2021-10-22

γ Range: 0 - 120DEG
γ Interval: 1.0DEG
Test System:EVERFINE GO-2000B_V1 SYSTEM V2.0.362
Humidity:65.0%
Test Distance:9.200m [K=1.0000]
Remarks:

CU AND LUMINAIRE BUDGETARY ESTIMATE DIAGRAM

Test:U:24.00V I:0.3164A P:7.594W PF:1.000 Freq:50.00Hz Lamp Flux:4.84867x70 lm		
NAME: P01-24V-5050-70-DMX-RGBW(5000K)-W	TYPE:	WEIGHT:
SPEC.:	DIM.:	SERIAL No.:
MFR.: OLYMPIA	SUR.:1*0.014	Shielding Angle:

pcc	80%			70%			50%			30%			10%			0
pw	50%	30%	10%	50%	30%	10%	50%	30%	10%	50%	30%	10%	50%	30%	10%	0
pfc	20%			20%			20%			20%			20%			0
RCR	RCR:Room Cavity Ratio						Coefficients of Utilization(CU)									
0.0	1.19	1.19	1.19	1.16	1.16	1.16	1.10	1.10	1.10	1.05	1.05	1.05	1.01	1.01	1.01	.98
1.0	1.04	1.00	.96	1.02	.98	.95	.97	.94	.91	.93	.91	.88	.89	.87	.85	.83
2.0	.91	.85	.79	.89	.83	.78	.86	.81	.76	.82	.78	.74	.79	.75	.72	.70
3.0	.81	.73	.66	.79	.72	.66	.76	.70	.64	.73	.68	.63	.70	.66	.62	.60
4.0	.72	.63	.57	.70	.62	.56	.68	.61	.55	.65	.59	.54	.63	.58	.54	.51
5.0	.64	.56	.49	.63	.55	.49	.61	.54	.48	.59	.52	.48	.57	.51	.47	.45
6.0	.58	.49	.43	.57	.49	.43	.55	.48	.42	.53	.47	.42	.52	.46	.41	.39
7.0	.53	.44	.38	.52	.44	.38	.50	.43	.38	.49	.42	.37	.47	.41	.37	.35
8.0	.48	.40	.34	.48	.40	.34	.46	.39	.34	.45	.38	.33	.43	.38	.33	.31
9.0	.44	.36	.31	.44	.36	.31	.42	.35	.31	.41	.35	.30	.40	.34	.30	.28
10.0	.41	.33	.28	.40	.33	.28	.39	.33	.28	.38	.32	.28	.37	.32	.27	.26



C Range: 0 - 360DEG
 C Interval: 30.0DEG
 Test Speed: HIGH
 Temperature:25.3DEG
 Operators:LPC
 Test Date:2021-10-22

γ Range: 0 - 120DEG
 γ Interval: 1.0DEG
 Test System:EVERFINE GO-2000B_V1 SYSTEM V2.0.362
 Humidity:65.0%
 Test Distance:9.200m [K=1.0000]
 Remarks:

WEC AND CCEC

Test:U:24.00V I:0.3164A P:7.594W PF:1.000 Freq:50.00Hz Lamp Flux:4.84867x70 lm					
NAME: P01-24V-5050-70-DMX-RGBW(5000K)-W			TYPE:		WEIGHT:
SPEC.:			DIM.:		SERIAL No.:
MFR.: OLYMPIA			SUR.:1*0.014		Shielding Angle:

pcc	80%			70%			50%			30%			10%			0	
pw	50%	30%	10%	50%	30%	10%	50%	30%	10%	50%	30%	10%	50%	30%	10%	0	
pfc	20%			20%			20%			20%			20%			0	
RCR	RCR:Room Cavity Ratio						Wall Exitance Coefficients(WEC)										
0.0																	
1.0	.297	.169	.053	.289	.165	.052	.275	.158	.050	.262	.151	.049	.251	.145	.047		
2.0	.279	.153	.047	.273	.150	.046	.260	.145	.045	.249	.140	.044	.238	.135	.043		
3.0	.259	.138	.041	.253	.136	.041	.242	.131	.040	.232	.127	.039	.223	.123	.038		
4.0	.240	.125	.037	.235	.123	.036	.225	.119	.036	.216	.116	.035	.208	.113	.034		
5.0	.223	.113	.033	.218	.112	.033	.209	.109	.032	.201	.106	.032	.194	.104	.031		
6.0	.207	.104	.030	.203	.103	.030	.195	.100	.029	.188	.098	.029	.181	.095	.028		
7.0	.193	.096	.027	.190	.094	.027	.183	.092	.027	.176	.090	.026	.170	.088	.026		
8.0	.181	.088	.025	.178	.087	.025	.171	.086	.024	.166	.084	.024	.160	.082	.024		
9.0	.170	.082	.023	.167	.081	.023	.161	.080	.023	.156	.078	.022	.151	.077	.022		
10.0	.160	.077	.021	.157	.076	.021	.152	.075	.021	.147	.073	.021	.143	.072	.021		

pcc	80%			70%			50%			30%			10%			0
pw	50%	30%	10%	50%	30%	10%	50%	30%	10%	50%	30%	10%	50%	30%	10%	0
pfc	20%			20%			20%			20%			20%			0
RCR	RCR:Room Cavity Ratio			Ceiling Cavity Exitance Coefficients(CCEC)												
0.0	.202	.202	.202	.173	.173	.173	.118	.118	.118	.068	.068	.068	.022	.022	.022	
1.0	.191	.168	.147	.163	.144	.127	.112	.099	.087	.064	.057	.051	.021	.018	.016	
2.0	.182	.144	.111	.156	.124	.096	.107	.086	.067	.062	.050	.039	.020	.016	.013	
3.0	.174	.126	.088	.149	.109	.076	.103	.075	.053	.059	.044	.031	.019	.014	.010	
4.0	.166	.113	.071	.143	.097	.062	.098	.068	.044	.057	.040	.026	.018	.013	.009	
5.0	.159	.102	.060	.137	.088	.052	.094	.062	.037	.054	.036	.022	.018	.012	.007	
6.0	.152	.094	.052	.131	.081	.045	.090	.057	.032	.052	.033	.019	.017	.011	.006	
7.0	.145	.087	.046	.125	.075	.040	.086	.053	.028	.050	.031	.017	.016	.010	.006	
8.0	.139	.081	.041	.120	.070	.036	.083	.049	.026	.048	.029	.015	.016	.010	.005	
9.0	.133	.076	.038	.115	.066	.033	.079	.046	.023	.046	.027	.014	.015	.009	.005	
10.0	.127	.072	.035	.110	.062	.030	.076	.044	.022	.044	.026	.013	.014	.009	.004	

C Range: 0 - 360DEG
C Interval: 30.0DEG
Test Speed: HIGH
Temperature:25.3DEG
Operators:LPC
Test Date:2021-10-22

γ Range: 0 - 120DEG
γ Interval: 1.0DEG
Test System:EVERFINE GO-2000B_V1 SYSTEM V2.0.362
Humidity:65.0%
Test Distance:9.200m [K=1.0000]
Remarks:

UGR(Unified Glare Rating) Table

Test:U:24.00V I:0.3164A P:7.594W PF:1.000 Freq:50.00Hz Lamp Flux:4.84867x70 lm											
NAME: P01-24V-5050-70-DMX-RGBW(5000K)-W						TYPE:		WEIGHT:			
SPEC.:						DIM.:		SERIAL No.:			
MFR.: OLYMPIA						SUR.:1*0.014		Shielding Angle:			
ceiling/cavity	0.7	0.7	0.5	0.5	0.3	0.7	0.7	0.5	0.5	0.3	
walls	0.5	0.3	0.5	0.3	0.3	0.5	0.3	0.5	0.3	0.3	
working plane	0.2	0.2	0.2	0.2	0.2	0.2	0.2	0.2	0.2	0.2	
Room dimensions		Viewed crosswise					Viewed endwise				
x = 2H y = 2H	24.2	25.7	24.5	25.9	26.1	23.1	24.6	23.4	24.8	25.0	
	3H	25.6	26.9	25.9	27.2	27.5	24.2	25.5	24.5	25.8	26.0
	4H	26.2	27.5	26.5	27.7	28.0	24.4	25.7	24.8	26.0	26.3
	6H	26.7	27.9	27.0	28.2	28.5	24.5	25.7	24.9	26.0	26.3
	8H	26.8	28.0	27.2	28.3	28.6	24.5	25.7	24.9	26.0	26.3
	12H	27.0	28.1	27.4	28.4	28.8	24.5	25.6	24.9	25.9	26.3
4H	2H	24.7	26.0	25.0	26.2	26.5	23.9	25.1	24.2	25.4	25.7
	3H	26.4	27.5	26.7	27.8	28.1	25.1	26.2	25.5	26.6	26.9
	4H	27.1	28.1	27.5	28.5	28.8	25.6	26.6	25.9	26.9	27.3
	6H	27.7	28.6	28.1	29.0	29.4	25.8	26.7	26.2	27.0	27.4
	8H	28.0	28.8	28.4	29.2	29.6	25.8	26.6	26.2	27.0	27.5
	12H	28.2	29.0	28.6	29.4	29.8	25.8	26.6	26.3	27.0	27.4
8H	4H	27.3	28.2	27.7	28.5	29.0	26.0	26.8	26.4	27.2	27.6
	6H	28.1	28.8	28.6	29.2	29.7	26.4	27.1	26.8	27.5	27.9
	8H	28.5	29.1	29.0	29.5	30.0	26.5	27.1	27.0	27.6	28.0
	12H	28.8	29.4	29.3	29.8	30.3	26.6	27.1	27.1	27.6	28.1
12H	4H	27.3	28.1	27.8	28.5	28.9	26.0	26.8	26.5	27.2	27.6
	6H	28.2	28.8	28.6	29.2	29.7	26.5	27.1	27.0	27.6	28.0
	8H	28.6	29.1	29.1	29.6	30.1	26.7	27.2	27.2	27.7	28.2
Variations with the observer position at spacings:											
S = 1.0H	+ 0.2 / - 0.2					+ 0.2 / - 0.3					
1.5H	+ 0.3 / - 0.4					+ 0.2 / - 0.4					
2.0H	+ 0.2 / - 0.3					+ 0.2 / - 0.5					

CIE Pub.117, 339.4 lm Total Lamp Luminous Flux Correct (8log(F/F0) = -3.8)

C Range: 0 - 360DEG
C Interval: 30.0DEG
Test Speed: HIGH
Temperature:25.3DEG
Operators:LPC
Test Date:2021-10-22

γ Range: 0 - 120DEG
γ Interval: 1.0DEG
Test System:EVERFINE GO-2000B_V1 SYSTEM V2.0.362
Humidity:65.0%
Test Distance:9.200m [K=1.0000]
Remarks:

UTILIZATION FACTORS TABLE

Test:U:24.00V I:0.3164A P:7.594W PF:1.000 Freq:50.00Hz Lamp Flux:4.84867x70 lm		
NAME: P01-24V-5050-70-DMX-RGBW(5000K)-W	TYPE:	WEIGHT:
SPEC.:	DIM.:	SERIAL No.:
MFR.: OLYMPIA	SUR.:1*0.014	Shielding Angle:

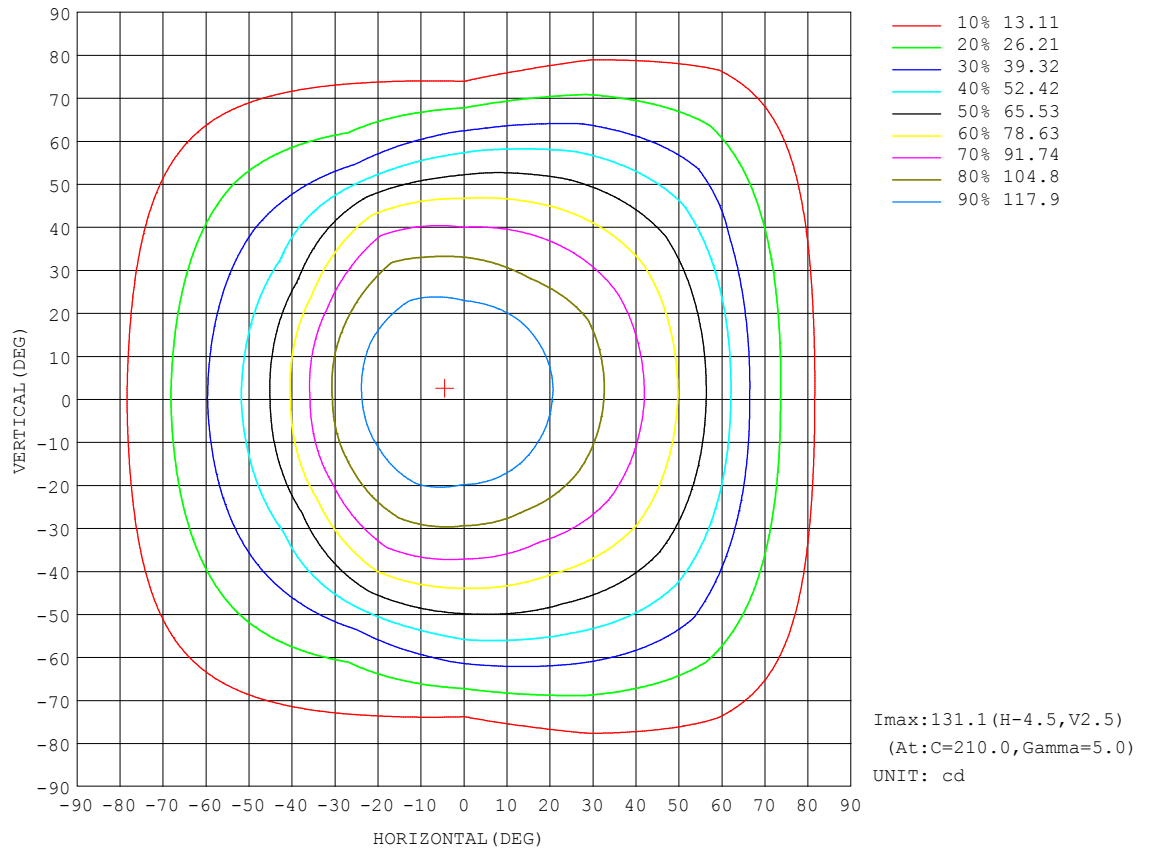
REFLECTANCE										
Ceiling	0.8	0.8	0.8	0.7	0.7	0.7	0.5	0.5	0.5	0
Walls	0.7	0.5	0.3	0.7	0.5	0.3	0.7	0.5	0.3	0
Working plane	0.2	0.2	0.2	0.2	0.2	0.2	0.2	0.2	0.2	0
ROOM INDEX	UTILIZATION FACTORS (PERCENT) $k(RI) \times RCR = 5$									
k = 0.60	59	48	41	58	48	41	57	47	41	35
0.80	69	58	51	68	58	51	66	57	50	44
1.00	77	67	60	76	66	59	74	67	59	52
1.25	84	74	67	83	74	67	80	72	66	59
1.50	89	80	73	88	79	72	84	77	71	64
2.00	96	88	81	94	86	81	90	84	79	71
2.50	99	92	86	97	91	85	93	88	83	75
3.00	103	96	91	100	94	90	96	91	87	79
4.00	106	101	96	104	99	95	100	95	92	83
5.00	109	104	100	106	102	98	101	98	95	86
ROOM INDEX	UF(total)									Direct
According to DIN EN 13032-2 2004			Suspended					SHRNOM = 1.25		

C Range: 0 - 360DEG
C Interval: 30.0DEG
Test Speed: HIGH
Temperature:25.3DEG
Operators:LPC
Test Date:2021-10-22

γ Range: 0 - 120DEG
 γ Interval: 1.0DEG
Test System:EVERFINE GO-2000B_V1 SYSTEM V2.0.362
Humidity:65.0%
Test Distance:9.200m [K=1.0000]
Remarks:

ISOCANDELA DIAGRAM

Test:U:24.00V I:0.3164A P:7.594W PF:1.000 Freq:50.00Hz Lamp Flux:4.84867x70 lm		
NAME: P01-24V-5050-70-DMX-RGBW(5000K)-W	TYPE:	WEIGHT:
SPEC.:	DIM.:	SERIAL No.:
MFR.: OLYMPIA	SUR.:1*0.014	Shielding Angle:

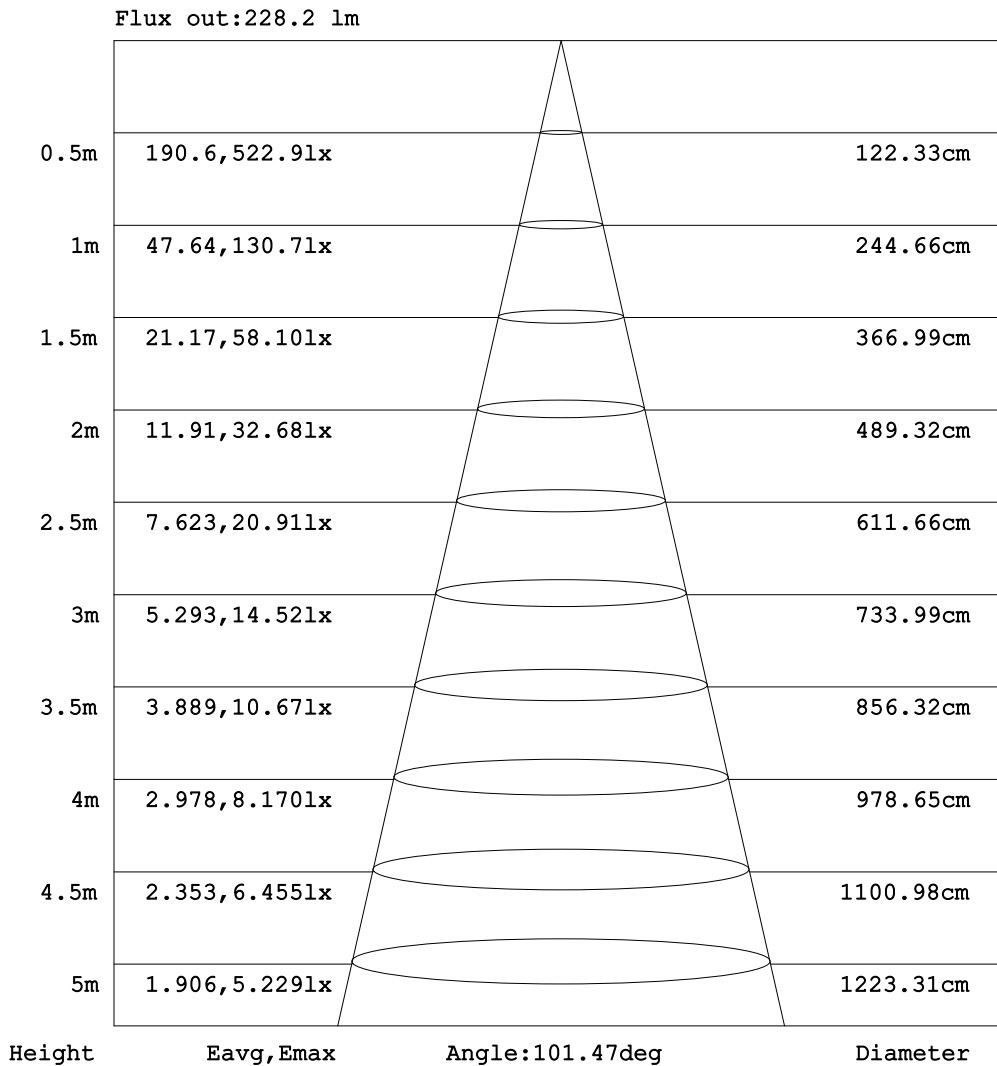


C Range: 0 - 360DEG
C Interval: 30.0DEG
Test Speed: HIGH
Temperature:25.3DEG
Operators:LPC
Test Date:2021-10-22

γ Range: 0 - 120DEG
γ Interval: 1.0DEG
Test System:EVERFINE GO-2000B_V1 SYSTEM V2.0.362
Humidity:65.0%
Test Distance:9.200m [K=1.0000]
Remarks:

AAI Figure

Test:U:24.00V I:0.3164A P:7.594W PF:1.000 Freq:50.00Hz Lamp Flux:4.84867x70 lm		
NAME: P01-24V-5050-70-DMX-RGBW(5000K)-W	TYPE:	WEIGHT:
SPEC.:	DIM.:	SERIAL No.:
MFR.: OLYMPIA	SUR.:1*0.014	Shielding Angle:



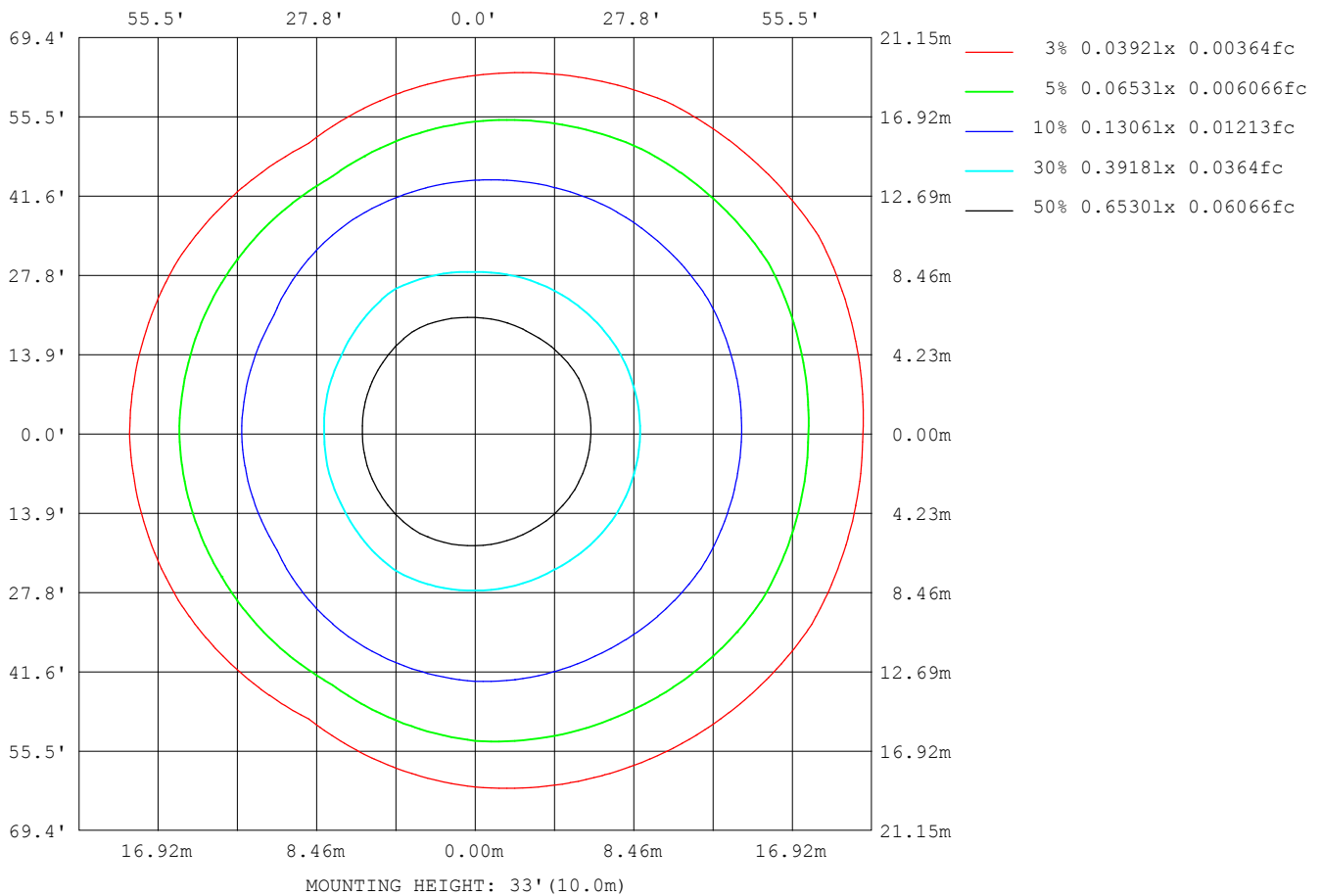
Note:The Curves indicate the illuminated area and the average illumination when the luminaire is at different distance.

C Range: 0 - 360DEG
C Interval: 30.0DEG
Test Speed: HIGH
Temperature:25.3DEG
Operators:LPC
Test Date:2021-10-22

γ Range: 0 - 120DEG
γ Interval: 1.0DEG
Test System:EVERFINE GO-2000B_V1 SYSTEM V2.0.362
Humidity:65.0%
Test Distance:9.200m [K=1.0000]
Remarks:

ISOLUX DIAGRAM

Test:U:24.00V I:0.3164A P:7.594W PF:1.000 Freq:50.00Hz Lamp Flux:4.84867x70 lm		
NAME: P01-24V-5050-70-DMX-RGBW(5000K)-W	TYPE:	WEIGHT:
SPEC.:	DIM.:	SERIAL No.:
MFR.: OLYMPIA	SUR.:1*0.014	Shielding Angle:



C Range: 0 - 360DEG
C Interval: 30.0DEG
Test Speed: HIGH
Temperature:25.3DEG
Operators:LPC
Test Date:2021-10-22

γ Range: 0 - 120DEG
γ Interval: 1.0DEG
Test System:EVERFINE GO-2000B_V1 SYSTEM V2.0.362
Humidity:65.0%
Test Distance:9.200m [K=1.0000]
Remarks:

LED Avg.L Report

Test:U:24.00V I:0.3164A P:7.594W PF:1.000 Freq:50.00Hz Lamp Flux:4.84867x70 lm		
NAME: P01-24V-5050-70-DMX-RGBW(5000K)-W	TYPE:	WEIGHT:
SPEC.:	DIM.:	SERIAL No.:
MFR.: OLYMPIA	SUR.:1*0.014	Shielding Angle:

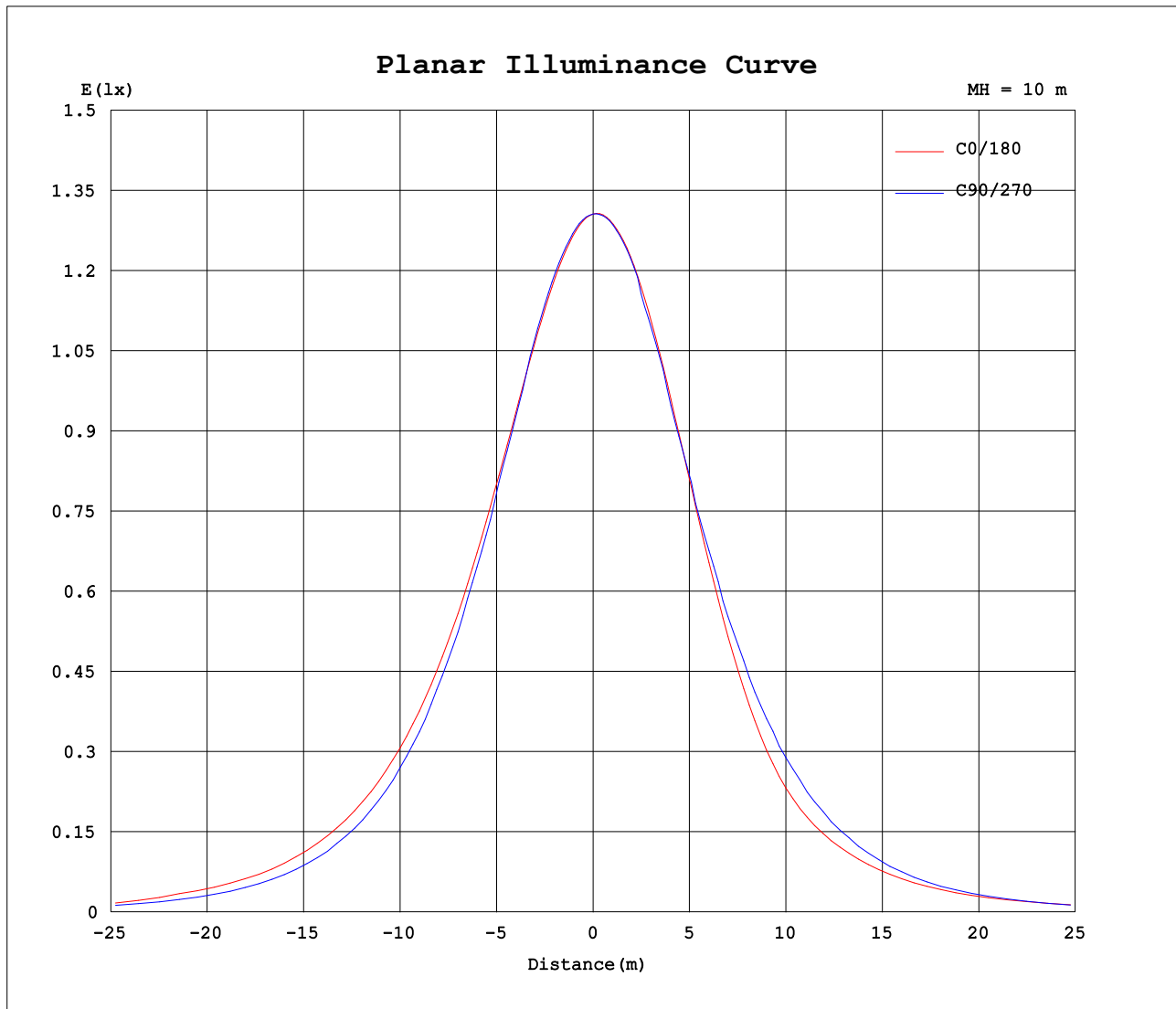
AvgL	cd/m2
L_0~180 (65) av	6468
L_0~180 (75) av	5628
L_0~180 (85) av	6237
L_90~270 (65) av	5403
L_90~270 (75) av	3068
L_90~270 (85) av	1079
L_45 (65) av	6122
L_45 (75) av	5444
L_45 (85) av	5267

Standard: GB/T 29293-2012

C Range: 0 - 360DEG
 C Interval: 30.0DEG
 Test Speed: HIGH
 Temperature:25.3DEG
 Operators:LPC
 Test Date:2021-10-22

γ Range: 0 - 120DEG
 γ Interval: 1.0DEG
 Test System:EVERFINE GO-2000B_V1 SYSTEM V2.0.362
 Humidity:65.0%
 Test Distance:9.200m [K=1.0000]
 Remarks:

Planar Illuminance Curve



C Range: 0 - 360DEG
C Interval: 30.0DEG
Test Speed: HIGH
Temperature: 25.3DEG
Operators: LPC
Test Date: 2021-10-22

γ Range: 0 - 120DEG
 γ Interval: 1.0DEG
Test System: EVERFINE GO-2000B_V1 SYSTEM V2.0.362
Humidity: 65.0%
Test Distance: 9.200m [K=1.0000]
Remarks:

LUMINOUS DISTRIBUTION INTENSITY DATA

Test:U:24.00V I:0.3164A P:7.594W PF:1.000 Freq:50.00Hz Lamp Flux:4.84867x70 lm		
NAME: P01-24V-5050-70-DMX-RGBW(5000K)-W	TYPE:	WEIGHT:
SPEC.:	DIM.:	SERIAL No.:
MFR.: OLYMPIA	SUR.:1*0.014	Shielding Angle:

Table--1

UNIT: cd

C (DEG) γ (DEG)	0	30	60	90	120	150	180	210	240	270	300	330							
0	131	131	131	131	131	131	131	131	131	131	131	131							
5	129	129	129	129	130	130	131	131	131	131	131	130							
10	126	126	126	127	128	129	130	130	130	130	130	129							
15	123	122	122	124	125	126	127	128	128	126	126	124							
20	118	118	118	118	121	121	123	124	124	122	121	120							
25	114	112	111	112	115	115	116	118	119	116	114	116							
30	108	106	104	104	107	106	106	110	113	109	108	110							
35	102	99.6	95.6	95.3	98.3	93.9	93.8	98.5	106	101	99.7	103							
40	94.7	92.1	87.0	86.4	88.2	80.1	79.6	84.6	96.2	91.6	93.5	95.5							
45	86.9	84.1	78.1	76.6	76.2	65.1	65.8	69.2	84.1	81.8	85.1	87.8							
50	78.1	75.4	68.8	65.2	61.9	53.1	55.4	55.8	68.7	71.0	75.7	79.4							
55	68.3	65.9	58.7	54.2	46.3	44.6	47.2	46.7	50.7	58.4	65.6	70.2							
60	56.7	55.9	48.8	42.6	33.4	36.7	38.7	38.3	35.2	45.5	54.9	60.1							
65	45.7	45.4	38.8	31.3	25.5	28.9	30.8	30.2	26.5	32.7	43.9	49.6							
70	33.3	35.0	29.0	20.4	19.3	21.8	23.7	22.6	19.8	21.2	33.1	38.9							
75	23.6	25.2	20.0	11.1	13.3	15.4	17.2	15.8	13.4	11.1	22.7	28.4							
80	15.3	16.1	12.1	4.96	8.09	9.82	11.2	9.65	7.98	3.75	13.6	18.5							
85	9.04	8.53	5.93	1.75	4.22	5.38	6.18	4.85	3.81	0.88	6.53	10.4							
90	4.39	3.95	2.51	1.16	2.31	2.71	2.77	2.05	1.55	0.55	2.30	4.74							
95	2.06	2.04	1.92	1.25	2.03	1.92	1.31	1.22	1.24	0.61	1.26	1.90							
100	1.49	1.76	1.91	1.36	2.04	1.96	1.20	1.19	1.25	0.77	1.25	1.22							
105	1.48	1.81	1.72	1.58	1.83	2.05	1.26	1.25	1.17	0.93	1.08	1.21							
110	1.53	1.86	1.96	1.58	2.04	2.11	1.32	1.33	1.42	0.93	1.31	1.24							
115	1.61	1.94	2.12	1.64	2.17	2.16	1.37	1.43	1.54	1.04	1.42	1.28							
120	1.74	1.97	1.88	1.73	2.21	2.21	1.41	1.51	1.58	1.17	1.27	1.36							
125	0.00	0.00	0.00	0.00	0.00	0.00	0.00	0.00	0.00	0.00	0.00	0.00							
130	0.00	0.00	0.00	0.00	0.00	0.00	0.00	0.00	0.00	0.00	0.00	0.00							
135	0.00	0.00	0.00	0.00	0.00	0.00	0.00	0.00	0.00	0.00	0.00	0.00							
140	0.00	0.00	0.00	0.00	0.00	0.00	0.00	0.00	0.00	0.00	0.00	0.00							
145	0.00	0.00	0.00	0.00	0.00	0.00	0.00	0.00	0.00	0.00	0.00	0.00							
150	0.00	0.00	0.00	0.00	0.00	0.00	0.00	0.00	0.00	0.00	0.00	0.00							
155	0.00	0.00	0.00	0.00	0.00	0.00	0.00	0.00	0.00	0.00	0.00	0.00							
160	0.00	0.00	0.00	0.00	0.00	0.00	0.00	0.00	0.00	0.00	0.00	0.00							
165	0.00	0.00	0.00	0.00	0.00	0.00	0.00	0.00	0.00	0.00	0.00	0.00							
170	0.00	0.00	0.00	0.00	0.00	0.00	0.00	0.00	0.00	0.00	0.00	0.00							
175	0.00	0.00	0.00	0.00	0.00	0.00	0.00	0.00	0.00	0.00	0.00	0.00							
180	0.00	0.00	0.00	0.00	0.00	0.00	0.00	0.00	0.00	0.00	0.00	0.00							

C Range: 0 - 360DEG
C Interval: 30.0DEG
Test Speed: HIGH
Temperature:25.3DEG
Operators:LPC
Test Date:2021-10-22

γ Range: 0 - 120DEG
γ Interval: 1.0DEG
Test System:EVERFINE GO-2000B_V1 SYSTEM V2.0.362
Humidity:65.0%
Test Distance:9.200m [K=1.0000]
Remarks: