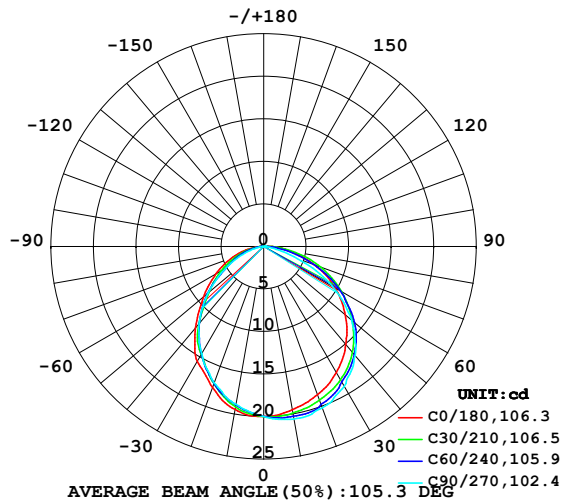


LUMINAIRE PHOTOMETRIC TEST REPORT

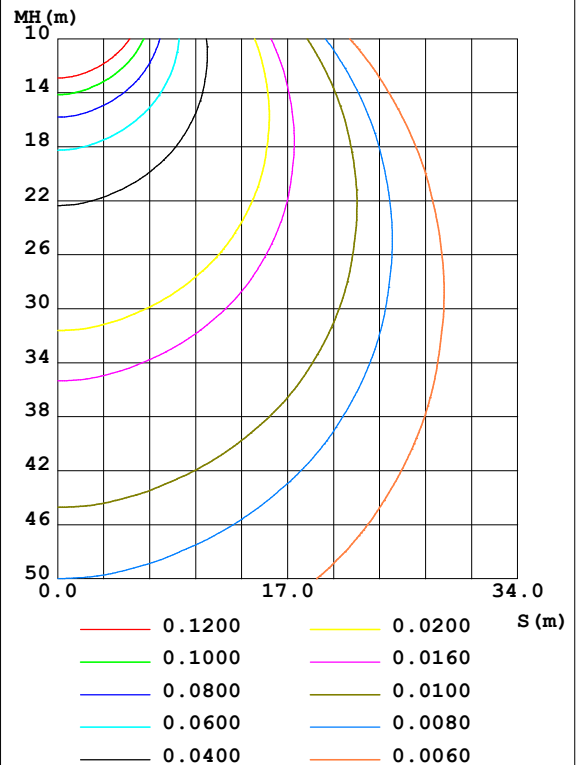
Test:U:24.00V I:0.3194A P:7.666W PF:1.000 Freq:50.00Hz Lamp Flux:0.771509x70 lm		
NAME: P01-24V-5050-70-DMX-RGBW(4000K)-B	TYPE:	WEIGHT:
SPEC.:	DIM.:	SERIAL No.:
MFR.: OLYMPIA	SUR.:1*0.014	Shielding Angle:

DATA OF LAMP		PHOTOMETRIC DATA				Eff: 7.05 lm/W
MODEL	5050	I _{max} (cd)	20.61	S/MH(C0/180)	1.17	
NOMINAL POWER(W)	12	LOR(%)	100.0	S/MH(C90/270)	1.10	
RATED VOLTAGE(V)	24	TOTAL FLUX(lm)	54.006	η UP,DN(C0-180)	0.7,55.2	
NOMINAL FLUX(lm)	0.771509	CIE CLASS	DIRECT	η UP,DN(C180-360)	0.5,43.6	
LAMPS INSIDE	70	η up(%)	1.1	CIBSE SHR NOM	1.25	
TEST VOLTAGE(V)	24	η down(%)	98.9	CIBSE SHR MAX	1.35	

LUMINOUS INTENSITY DISTRIBUTION DIAGRAM



C0 PLANE ISOLUX DIAGRAM (UNIT:lx)



C Range: 0 - 360DEG
 C Interval: 30.0DEG
 Test Speed: HIGH
 Temperature: 25.3DEG
 Operators: LPC
 Test Date: 2021-10-22

γ Range: 0 - 120DEG
 γ Interval: 1.0DEG
 Test System: EVERFINE GO-2000B_V1 SYSTEM V2.0.362
 Humidity: 65.0%
 Test Distance: 9.200m [K=1.0000]
 Remarks:

ZONAL FLUX DIAGRAM

ZONAL FLUX DIAGRAM:

γ	C0	C45	C90	C135	C180	C225	C270	C315	γ	Φ zone	Φ total	%lum, lamp
10	19.48	20.08	20.59	20.19	19.46	19.04	18.84	19.03	0- 10	1.890	1.890	3.5,3.5
20	18.53	19.48	20.17	19.27	17.63	17.14	17.04	17.48	10- 20	5.380	7.271	13.5,13.5
30	17.10	18.23	18.95	17.28	15.64	14.67	14.57	15.59	20- 30	8.050	15.32	28.4,28.4
40	15.03	16.41	16.73	14.34	12.46	11.81	11.76	13.39	30- 40	9.591	24.91	46.1,46.1
50	12.52	13.78	13.52	10.82	9.249	8.536	8.572	10.75	40- 50	9.638	34.55	64,64
60	9.692	10.47	9.302	7.116	6.516	5.458	5.204	7.817	50- 60	8.346	42.90	79.4,79.4
70	6.386	6.745	4.232	4.259	4.078	3.154	2.399	4.870	60- 70	6.079	48.97	90.7,90.7
80	3.174	3.036	0.7973	1.666	1.712	1.221	0.5237	2.196	70- 80	3.341	52.32	96.9,96.9
90	0.8962	0.6431	0.1407	0.2714	0.1954	0.2087	0.0452	0.4828	80- 90	1.070	53.39	98.9,98.9
100	0.1961	0.2136	0.1609	0.2236	0.1206	0.1684	0.0503	0.1659	90-100	0.2452	53.63	99.3,99.3
110	0.1860	0.2035	0.1860	0.2136	0.1306	0.1910	0.0754	0.1784	100-110	0.1863	53.82	99.7,99.7
120	0.1960	0.2086	0.2061	0.2161	0.1256	0.2061	0.1307	0.1558	110-120	0.1799	54.00	100,100
130	0	0	0	0	0	0	0	0	120-130	0.0088	54.01	100,100
140	0	0	0	0	0	0	0	0	130-140	0	54.01	100,100
150	0	0	0	0	0	0	0	0	140-150	0	54.01	100,100
160	0	0	0	0	0	0	0	0	150-160	0	54.01	100,100
170	0	0	0	0	0	0	0	0	160-170	0	54.01	100,100
180	0	0	0	0	0	0	0	0	170-180	0	54.01	100,100
DEG	LUMINOUS INTENSITY:cd									UNIT:lm		

Conical surface Flux(90deg): 29.814 lm

%lum = 55.2%

%lamp = 55.2%

Conical surface Flux(120deg): 42.896 lm

%lum = 79.4%

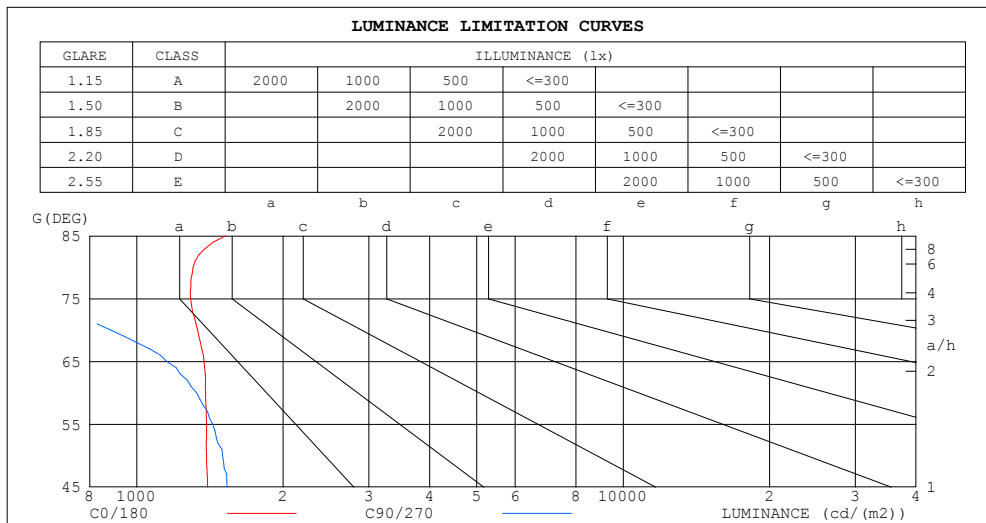
%lamp = 79.4%

C Range: 0 - 360DEG
 C Interval: 30.0DEG
 Test Speed: HIGH
 Temperature:25.3DEG
 Operators:LPC
 Test Date:2021-10-22

γ Range: 0 - 120DEG
 γ Interval: 1.0DEG
 Test System:EVERFINE GO-2000B_V1 SYSTEM V2.0.362
 Humidity:65.0%
 Test Distance:9.200m [K=1.0000]
 Remarks:

LUMINANCE LIMITATION CURVES

Test:U:24.00V I:0.3194A P:7.666W PF:1.000 Freq:50.00Hz Lamp Flux:0.771509x70 lm		
NAME: P01-24V-5050-70-DMX-RGBW(4000K)-B	TYPE:	WEIGHT:
SPEC.:	DIM.:	SERIAL No.:
MFR.: OLYMPIA	SUR.:1*0.014	Shielding Angle:



LUMINANCE cd/(m2)		
G (DEG)	C0/180	C90/270
85	1522	136
80	1306	328
75	1291	608
70	1334	884
65	1374	1152
60	1385	1329
55	1392	1433
50	1391	1502
45	1399	1532

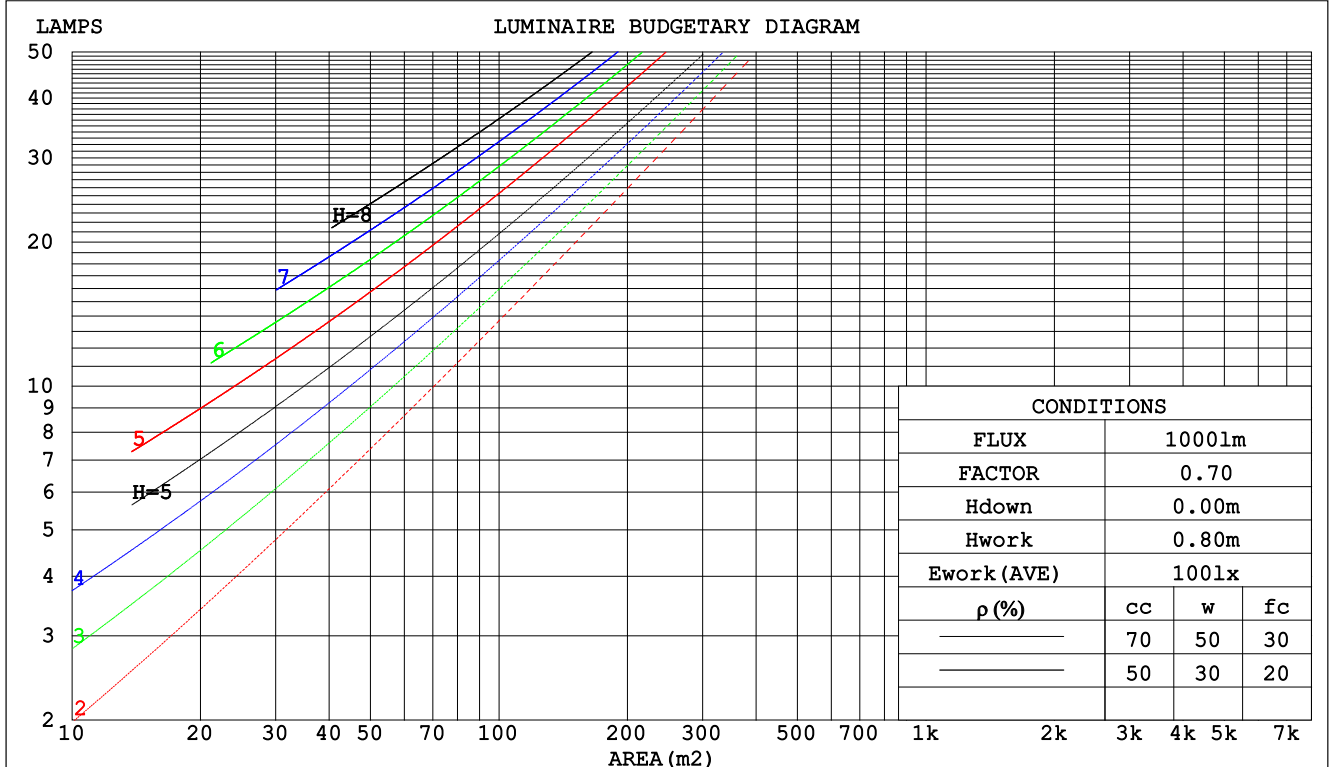
C Range: 0 - 360DEG
C Interval: 30.0DEG
Test Speed: HIGH
Temperature:25.3DEG
Operators:LPC
Test Date:2021-10-22

γ Range: 0 - 120DEG
 γ Interval: 1.0DEG
Test System:EVERFINE GO-2000B_V1 SYSTEM V2.0.362
Humidity:65.0%
Test Distance:9.200m [K=1.0000]
Remarks:

CU AND LUMINAIRE BUDGETARY ESTIMATE DIAGRAM

Test:U:24.00V I:0.3194A P:7.666W PF:1.000 Freq:50.00Hz Lamp Flux:0.771509x70 lm		
NAME: P01-24V-5050-70-DMX-RGBW(4000K)-B	TYPE:	WEIGHT:
SPEC.:	DIM.:	SERIAL No.:
MFR.: OLYMPIA	SUR.:1*0.014	Shielding Angle:

pcc	80%			70%			50%			30%			10%			0
pw	50%	30%	10%	50%	30%	10%	50%	30%	10%	50%	30%	10%	50%	30%	10%	0
pfc	20%			20%			20%			20%			20%			0
RCR	RCR:Room Cavity Ratio						Coefficients of Utilization(CU)									
0.0	1.19	1.19	1.19	1.16	1.16	1.16	1.10	1.10	1.10	1.06	1.06	1.06	1.01	1.01	1.01	.99
1.0	1.04	.00	.96	1.02	.98	.94	.97	.94	.91	.93	.90	.88	.89	.87	.85	.83
2.0	.91	.84	.79	.89	.83	.77	.85	.80	.76	.82	.77	.74	.79	.75	.72	.70
3.0	.80	.72	.66	.78	.71	.65	.75	.69	.64	.72	.67	.62	.70	.65	.61	.59
4.0	.71	.62	.56	.70	.62	.55	.67	.60	.54	.65	.58	.54	.62	.57	.53	.50
5.0	.64	.55	.48	.62	.54	.48	.60	.53	.47	.58	.52	.47	.56	.50	.46	.44
6.0	.57	.48	.42	.56	.48	.42	.54	.47	.41	.53	.46	.41	.51	.45	.40	.38
7.0	.52	.43	.37	.51	.43	.37	.50	.42	.37	.48	.41	.36	.47	.41	.36	.34
8.0	.47	.39	.33	.47	.39	.33	.45	.38	.33	.44	.37	.33	.43	.37	.32	.30
9.0	.44	.35	.30	.43	.35	.30	.42	.35	.30	.41	.34	.29	.40	.34	.29	.27
10.0	.40	.32	.27	.40	.32	.27	.39	.32	.27	.38	.31	.27	.37	.31	.27	.25



C Range: 0 - 360DEG
 C Interval: 30.0DEG
 Test Speed: HIGH
 Temperature:25.3DEG
 Operators:LPC
 Test Date:2021-10-22

γ Range: 0 - 120DEG
 γ Interval: 1.0DEG
 Test System:EVERFINE GO-2000B_V1 SYSTEM V2.0.362
 Humidity:65.0%
 Test Distance:9.200m [K=1.0000]
 Remarks:

WEC AND CCEC

Test:U:24.00V I:0.3194A P:7.666W PF:1.000 Freq:50.00Hz Lamp Flux:0.771509x70 lm		
NAME: P01-24V-5050-70-DMX-RGBW(4000K)-B	TYPE:	WEIGHT:
SPEC.:	DIM.:	SERIAL No.:
MFR.: OLYMPIA	SUR.:1*0.014	Shielding Angle:

pcc	80%			70%			50%			30%			10%			0	
pw	50%	30%	10%	50%	30%	10%	50%	30%	10%	50%	30%	10%	50%	30%	10%	0	
pfc	20%			20%			20%			20%			20%			0	
RCR	RCR:Room Cavity Ratio						Wall Exitance Coefficients(WEC)										
0.0																	
1.0	.303	.172	.055	.296	.169	.054	.282	.162	.052	.269	.155	.050	.257	.149	.048		
2.0	.285	.156	.048	.278	.153	.047	.266	.148	.046	.255	.143	.045	.244	.138	.044		
3.0	.264	.141	.042	.258	.138	.042	.247	.134	.041	.237	.130	.040	.228	.126	.039		
4.0	.244	.127	.037	.239	.125	.037	.229	.122	.036	.220	.118	.036	.212	.115	.035		
5.0	.226	.115	.033	.222	.114	.033	.213	.111	.033	.205	.108	.032	.198	.106	.032		
6.0	.210	.105	.030	.206	.104	.030	.198	.102	.030	.191	.099	.029	.185	.097	.029		
7.0	.196	.097	.027	.192	.096	.027	.185	.094	.027	.179	.092	.027	.173	.090	.026		
8.0	.183	.089	.025	.180	.089	.025	.174	.087	.025	.168	.085	.025	.162	.083	.024		
9.0	.172	.083	.023	.169	.082	.023	.163	.081	.023	.158	.079	.023	.153	.078	.022		
10.0	.162	.077	.022	.159	.077	.021	.154	.075	.021	.149	.074	.021	.145	.073	.021		

pcc	80%			70%			50%			30%			10%			0	
pw	50%	30%	10%	50%	30%	10%	50%	30%	10%	50%	30%	10%	50%	30%	10%	0	
pfc	20%			20%			20%			20%			20%			0	
RCR	RCR:Room Cavity Ratio						Ceiling Cavity Exitance Coefficients(CCEC)										
0.0	.199	.199	.199	.170	.170	.170	.116	.116	.116	.067	.067	.067	.021	.021	.021		
1.0	.189	.165	.144	.161	.142	.124	.110	.097	.086	.064	.056	.050	.020	.018	.016		
2.0	.180	.141	.108	.154	.121	.093	.106	.084	.065	.061	.049	.038	.020	.016	.012		
3.0	.172	.123	.084	.148	.106	.073	.101	.074	.051	.059	.043	.030	.019	.014	.010		
4.0	.165	.110	.068	.141	.095	.059	.097	.066	.042	.056	.039	.025	.018	.013	.008		
5.0	.157	.099	.057	.135	.086	.049	.093	.060	.035	.054	.035	.021	.017	.012	.007		
6.0	.150	.091	.049	.129	.079	.042	.089	.055	.030	.052	.032	.018	.017	.011	.006		
7.0	.143	.084	.043	.123	.073	.037	.085	.051	.026	.049	.030	.016	.016	.010	.005		
8.0	.137	.078	.038	.118	.068	.033	.082	.048	.024	.047	.028	.014	.015	.009	.005		
9.0	.131	.073	.035	.113	.064	.030	.078	.045	.021	.046	.026	.013	.015	.009	.004		
10.0	.125	.069	.032	.108	.060	.028	.075	.042	.020	.044	.025	.012	.014	.008	.004		

C Range: 0 - 360DEG
C Interval: 30.0DEG
Test Speed: HIGH
Temperature:25.3DEG
Operators:LPC
Test Date:2021-10-22

γ Range: 0 - 120DEG
γ Interval: 1.0DEG
Test System:EVERFINE GO-2000B_V1 SYSTEM V2.0.362
Humidity:65.0%
Test Distance:9.200m [K=1.0000]
Remarks:

UGR(Unified Glare Rating) Table

Test:U:24.00V I:0.3194A P:7.666W PF:1.000 Freq:50.00Hz Lamp Flux:0.771509x70 lm											
NAME: P01-24V-5050-70-DMX-RGBW(4000K)-B					TYPE:			WEIGHT:			
SPEC.:					DIM.:			SERIAL No.:			
MFR.: OLYMPIA					SUR.:1*0.014			Shielding Angle:			
ceiling/cavity	0.7	0.7	0.5	0.5	0.3	0.7	0.7	0.5	0.5	0.3	
walls	0.5	0.3	0.5	0.3	0.3	0.5	0.3	0.5	0.3	0.3	
working plane	0.2	0.2	0.2	0.2	0.2	0.2	0.2	0.2	0.2	0.2	
Room dimensions		Viewed crosswise					Viewed endwise				
x = 2H y = 2H	25.0	26.5	25.3	26.7	26.9	25.0	26.4	25.2	26.7	26.9	
	3H	26.7	28.0	27.0	28.3	28.5	26.1	27.4	26.4	27.7	28.0
	4H	27.4	28.7	27.7	28.9	29.2	26.3	27.6	26.7	27.9	28.2
	6H	27.9	29.2	28.3	29.4	29.8	26.4	27.6	26.8	27.9	28.2
	8H	28.2	29.3	28.5	29.6	30.0	26.4	27.6	26.7	27.9	28.2
	12H	28.4	29.5	28.7	29.8	30.1	26.3	27.5	26.7	27.8	28.1
4H	2H	25.7	27.0	26.0	27.3	27.5	25.7	27.0	26.0	27.2	27.5
	3H	27.6	28.7	28.0	29.1	29.4	27.0	28.2	27.4	28.5	28.8
	4H	28.5	29.5	28.8	29.8	30.2	27.5	28.5	27.9	28.8	29.2
	6H	29.2	30.1	29.6	30.5	30.9	27.6	28.6	28.1	28.9	29.3
	8H	29.5	30.3	29.9	30.7	31.1	27.7	28.5	28.1	28.9	29.3
	12H	29.7	30.5	30.2	30.9	31.4	27.6	28.4	28.1	28.8	29.3
8H	4H	28.8	29.6	29.2	30.0	30.4	27.9	28.7	28.3	29.1	29.5
	6H	29.7	30.4	30.1	30.8	31.3	28.3	29.0	28.7	29.4	29.9
	8H	30.1	30.7	30.6	31.2	31.7	28.4	29.0	28.8	29.4	29.9
	12H	30.5	31.0	31.0	31.5	32.0	28.4	28.9	28.9	29.4	29.9
12H	4H	28.8	29.5	29.2	29.9	30.4	27.9	28.7	28.4	29.1	29.6
	6H	29.7	30.4	30.2	30.8	31.3	28.4	29.0	28.9	29.5	30.0
	8H	30.2	30.8	30.7	31.2	31.7	28.6	29.1	29.1	29.6	30.1
Variations with the observer position at spacings:											
S = 1.0H	+ 0.2 / - 0.2					+ 0.2 / - 0.2					
1.5H	+ 0.2 / - 0.4					+ 0.2 / - 0.4					
2.0H	+ 0.2 / - 0.5					+ 0.2 / - 0.5					

CIE Pub.117, 54.01 lm Total Lamp Luminous Flux Correct (8log(F/F0) = -10.1)

C Range: 0 - 360DEG
C Interval: 30.0DEG
Test Speed: HIGH
Temperature:25.3DEG
Operators:LPC
Test Date:2021-10-22

γ Range: 0 - 120DEG
γ Interval: 1.0DEG
Test System:EVERFINE GO-2000B_V1 SYSTEM V2.0.362
Humidity:65.0%
Test Distance:9.200m [K=1.0000]
Remarks:

UTILIZATION FACTORS TABLE

Test:U:24.00V I:0.3194A P:7.666W PF:1.000 Freq:50.00Hz Lamp Flux:0.771509x70 lm		
NAME: P01-24V-5050-70-DMX-RGBW(4000K)-B	TYPE:	WEIGHT:
SPEC.:	DIM.:	SERIAL No.:
MFR.: OLYMPIA	SUR.:1*0.014	Shielding Angle:

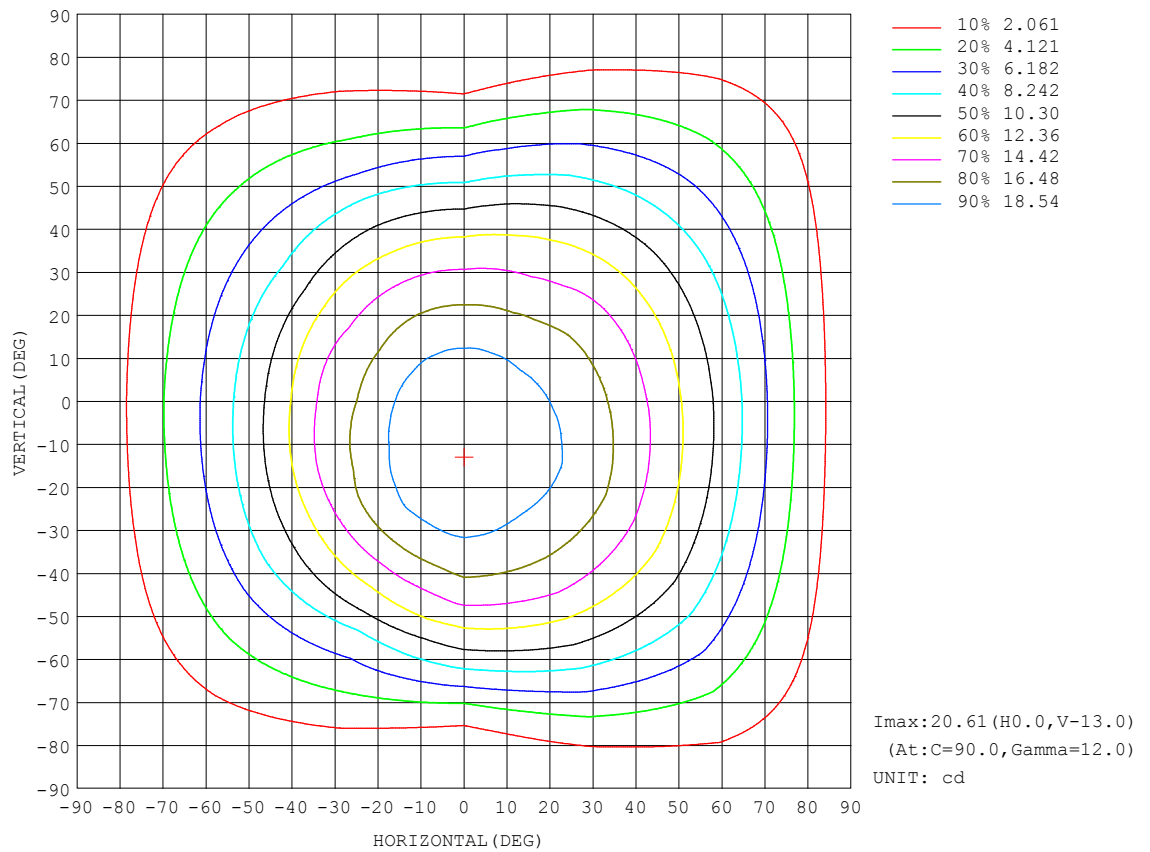
REFLECTANCE										
Ceiling	0.8	0.8	0.8	0.7	0.7	0.7	0.5	0.5	0.5	0
Walls	0.7	0.5	0.3	0.7	0.5	0.3	0.7	0.5	0.3	0
Working plane	0.2	0.2	0.2	0.2	0.2	0.2	0.2	0.2	0.2	0
ROOM INDEX	UTILIZATION FACTORS (PERCENT) k(RI) x RCR = 5									
k = 0.60	58	47	40	58	47	40	56	46	40	33
0.80	68	57	50	67	56	49	65	56	49	42
1.00	77	66	59	75	65	58	73	66	58	51
1.25	84	73	66	82	73	66	79	71	65	58
1.50	89	79	72	87	78	71	84	76	70	63
2.00	95	87	81	93	86	80	90	83	78	70
2.50	99	91	85	97	90	84	93	87	83	74
3.00	102	96	90	100	94	89	96	91	87	78
4.00	106	101	96	104	99	95	99	95	92	83
5.00	109	104	100	106	102	98	101	98	95	85
ROOM INDEX	UF(total)									Direct
According to DIN EN 13032-2 2004										
Suspended										
SHRNOM = 1.25										

C Range: 0 - 360DEG
C Interval: 30.0DEG
Test Speed: HIGH
Temperature:25.3DEG
Operators:LPC
Test Date:2021-10-22

γ Range: 0 - 120DEG
 γ Interval: 1.0DEG
Test System:EVERFINE GO-2000B_V1 SYSTEM V2.0.362
Humidity:65.0%
Test Distance:9.200m [K=1.0000]
Remarks:

ISOCANDELA DIAGRAM

Test:U:24.00V I:0.3194A P:7.666W PF:1.000 Freq:50.00Hz Lamp Flux:0.771509x70 lm		
NAME: P01-24V-5050-70-DMX-RGBW(4000K)-B	TYPE:	WEIGHT:
SPEC.:	DIM.:	SERIAL No.:
MFR.: OLYMPIA	SUR.:1*0.014	Shielding Angle:

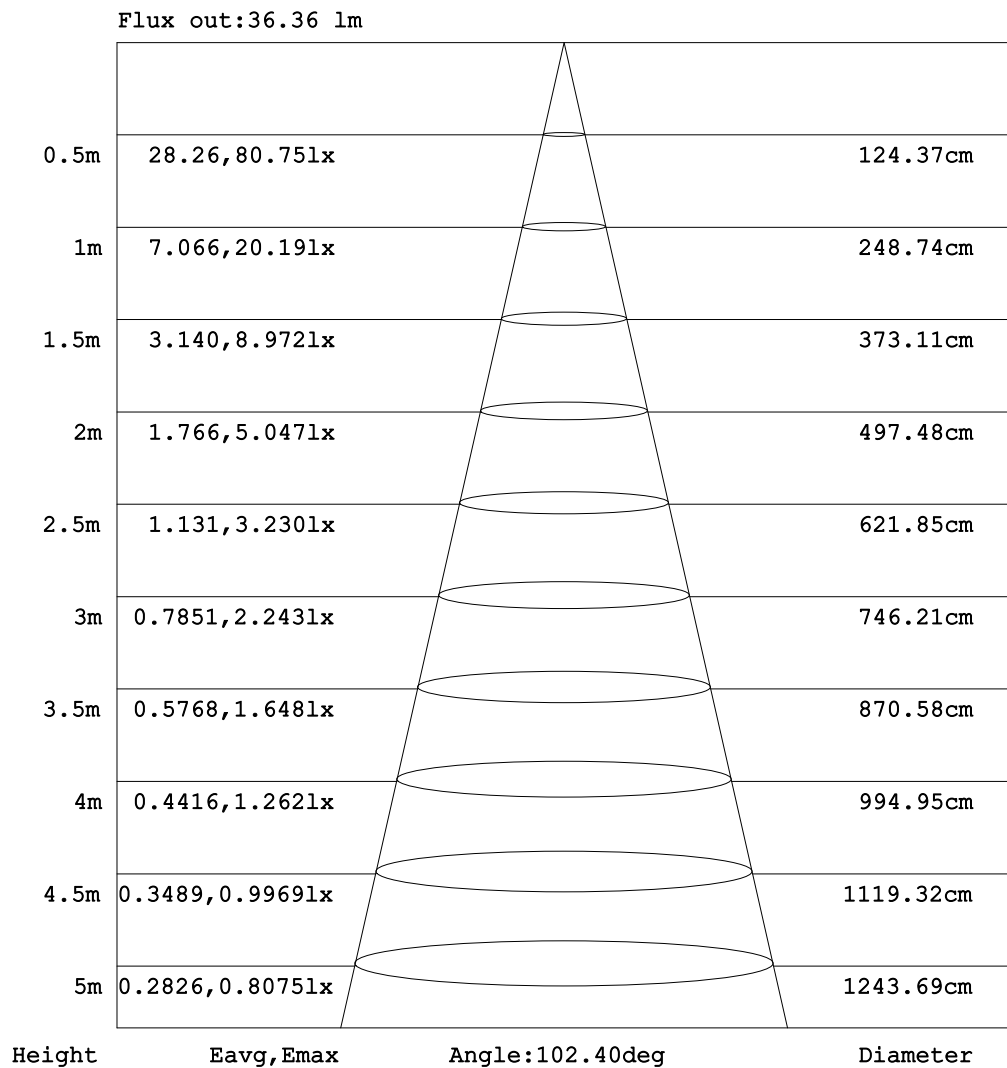


C Range: 0 - 360DEG
C Interval: 30.0DEG
Test Speed: HIGH
Temperature:25.3DEG
Operators:LPC
Test Date:2021-10-22

γ Range: 0 - 120DEG
γ Interval: 1.0DEG
Test System:EVERFINE GO-2000B_V1 SYSTEM V2.0.362
Humidity:65.0%
Test Distance:9.200m [K=1.0000]
Remarks:

AAI Figure

Test:U:24.00V I:0.3194A P:7.666W PF:1.000 Freq:50.00Hz Lamp Flux:0.771509x70 lm		
NAME: P01-24V-5050-70-DMX-RGBW(4000K)-B	TYPE:	WEIGHT:
SPEC.:	DIM.:	SERIAL No.:
MFR.: OLYMPIA	SUR.:1*0.014	Shielding Angle:



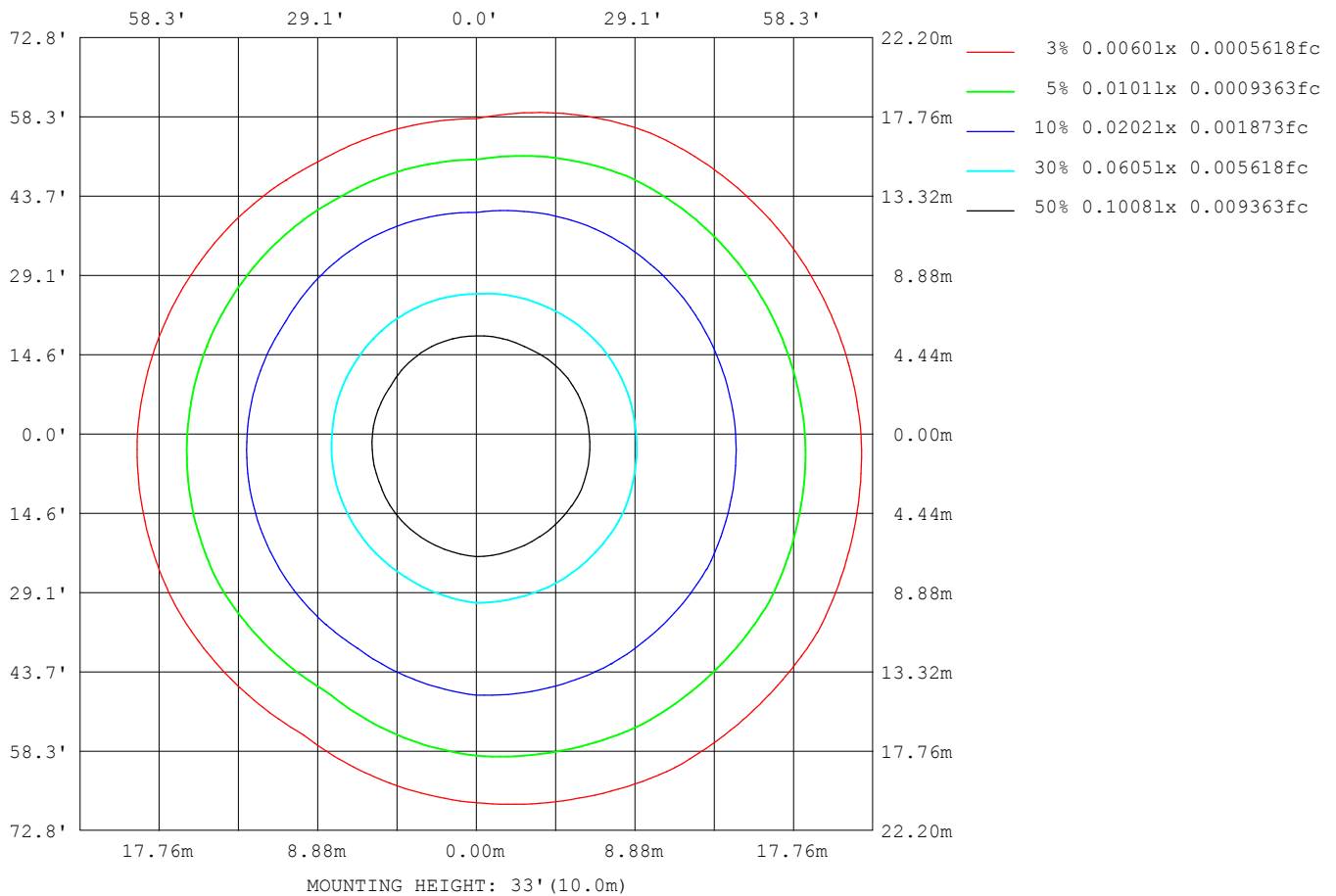
Note:The Curves indicate the illuminated area and the average illumination when the luminaire is at different distance.

C Range: 0 - 360DEG
C Interval: 30.0DEG
Test Speed: HIGH
Temperature:25.3DEG
Operators:LPC
Test Date:2021-10-22

γ Range: 0 - 120DEG
γ Interval: 1.0DEG
Test System:EVERFINE GO-2000B_V1 SYSTEM V2.0.362
Humidity:65.0%
Test Distance:9.200m [K=1.0000]
Remarks:

ISOLUX DIAGRAM

Test:U:24.00V I:0.3194A P:7.666W PF:1.000 Freq:50.00Hz Lamp Flux:0.771509x70 lm		
NAME: P01-24V-5050-70-DMX-RGBW(4000K)-B	TYPE:	WEIGHT:
SPEC.:	DIM.:	SERIAL No.:
MFR.: OLYMPIA	SUR.:1*0.014	Shielding Angle:



C Range: 0 - 360DEG
 C Interval: 30.0DEG
 Test Speed: HIGH
 Temperature:25.3DEG
 Operators:LPC
 Test Date:2021-10-22

γ Range: 0 - 120DEG
 γ Interval: 1.0DEG
 Test System:EVERFINE GO-2000B_V1 SYSTEM V2.0.362
 Humidity:65.0%
 Test Distance:9.200m [K=1.0000]
 Remarks:

LED Avg.L Report

Test:U:24.00V I:0.3194A P:7.666W PF:1.000 Freq:50.00Hz Lamp Flux:0.771509x70 lm		
NAME: P01-24V-5050-70-DMX-RGBW(4000K)-B	TYPE:	WEIGHT:
SPEC.:	DIM.:	SERIAL No.:
MFR.: OLYMPIA	SUR.:1*0.014	Shielding Angle:

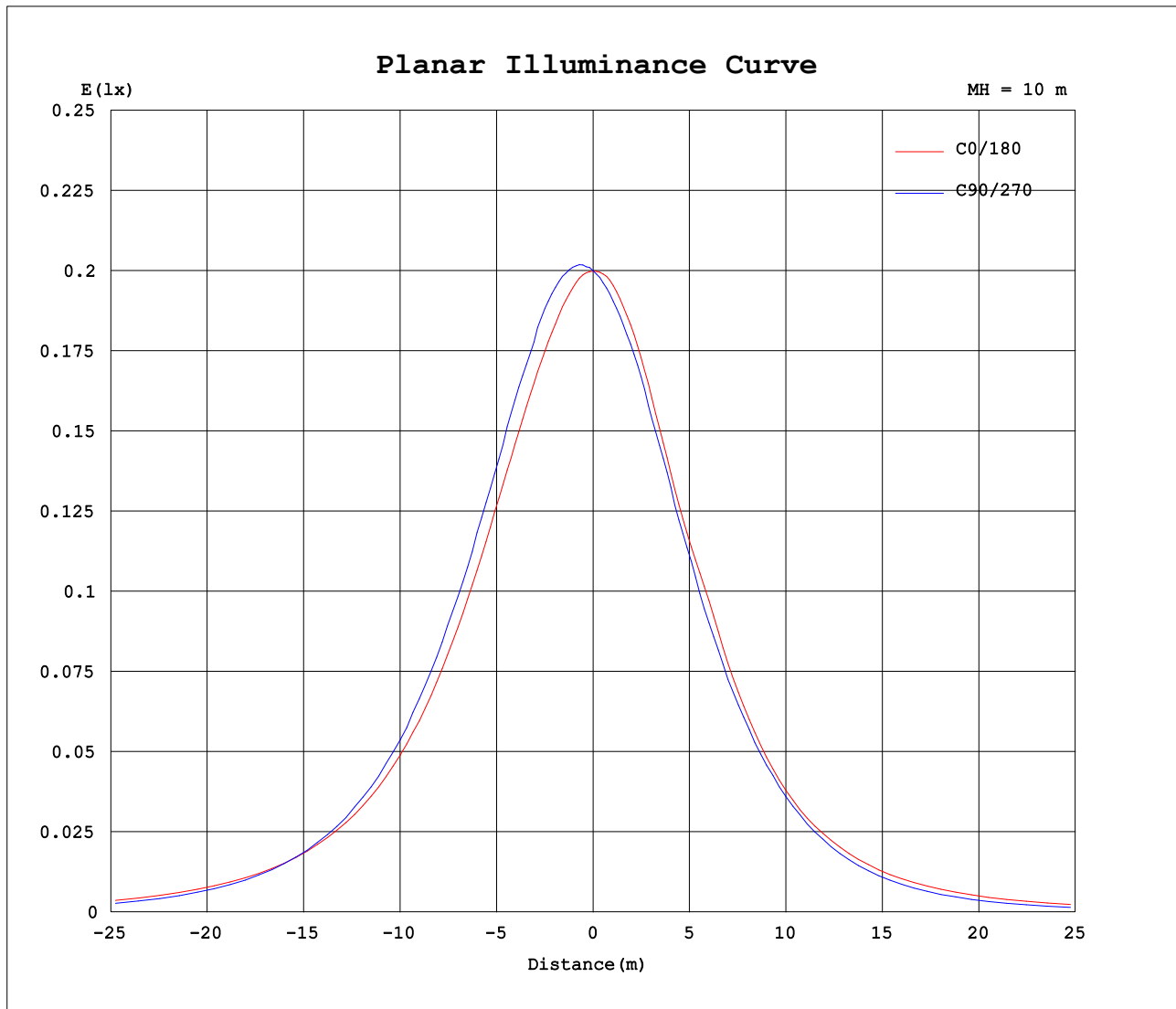
AvgL	cd/m2
L_0~180 (65) av	1132
L_0~180 (75) av	1043
L_0~180 (85) av	1073
L_90~270 (65) av	891
L_90~270 (75) av	484
L_90~270 (85) av	115
L_45 (65) av	1056
L_45 (75) av	937
L_45 (85) av	850

Standard: GB/T 29293-2012

C Range: 0 - 360DEG
 C Interval: 30.0DEG
 Test Speed: HIGH
 Temperature:25.3DEG
 Operators:LPC
 Test Date:2021-10-22

γ Range: 0 - 120DEG
 γ Interval: 1.0DEG
 Test System:EVERFINE GO-2000B_V1 SYSTEM V2.0.362
 Humidity:65.0%
 Test Distance:9.200m [K=1.0000]
 Remarks:

Planar Illuminance Curve



C Range: 0 - 360DEG
C Interval: 30.0DEG
Test Speed: HIGH
Temperature: 25.3DEG
Operators: LPC
Test Date: 2021-10-22

γ Range: 0 - 120DEG
 γ Interval: 1.0DEG
Test System: EVERFINE GO-2000B_V1 SYSTEM V2.0.362
Humidity: 65.0%
Test Distance: 9.200m [K=1.0000]
Remarks:

LUMINOUS DISTRIBUTION INTENSITY DATA

Test:U:24.00V I:0.3194A P:7.666W PF:1.000 Freq:50.00Hz Lamp Flux:0.771509x70 lm		
NAME: P01-24V-5050-70-DMX-RGBW(4000K)-B	TYPE:	WEIGHT:
SPEC.:	DIM.:	SERIAL No.:
MFR.: OLYMPIA	SUR.:1*0.014	Shielding Angle:

Table--1

UNIT: cd

C (DEG) γ (DEG)	0	30	60	90	120	150	180	210	240	270	300	330							
0	20.0	20.0	20.0	20.0	20.0	20.0	20.0	20.0	20.0	20.0	20.0	20.0							
5	19.9	20.0	20.2	20.4	20.3	20.2	19.9	19.7	19.5	19.5	19.5	19.7							
10	19.5	19.9	20.3	20.6	20.4	19.9	19.5	19.1	18.9	18.8	18.9	19.2							
15	19.1	19.6	20.3	20.6	20.3	19.4	18.7	18.3	18.2	18.1	18.2	18.5							
20	18.5	19.2	19.7	20.2	19.9	18.6	17.6	17.1	17.1	17.0	17.1	17.9							
25	17.9	18.7	19.3	19.6	19.1	17.5	16.5	15.9	15.9	15.9	16.0	17.1							
30	17.1	18.1	18.4	19.0	18.1	16.5	15.6	14.7	14.6	14.6	15.0	16.2							
35	16.2	17.3	17.6	17.9	16.7	15.5	14.1	13.6	13.2	13.2	13.7	15.2							
40	15.0	16.3	16.6	16.7	15.0	13.6	12.5	11.8	11.8	11.8	12.7	14.0							
45	13.8	15.0	15.4	15.2	13.2	11.8	10.7	9.98	10.2	10.2	11.5	12.7							
50	12.5	13.6	14.0	13.5	11.4	10.2	9.25	8.43	8.64	8.57	10.1	11.4							
55	11.2	12.1	12.1	11.5	9.27	8.69	7.84	7.09	6.81	6.83	8.65	9.95							
60	9.69	10.6	10.4	9.30	7.11	7.12	6.52	5.79	5.13	5.20	7.18	8.46							
65	8.13	8.86	8.39	6.82	5.70	5.65	5.26	4.54	3.96	3.72	5.69	6.96							
70	6.39	7.16	6.33	4.23	4.22	4.29	4.08	3.39	2.92	2.40	4.28	5.46							
75	4.68	5.35	4.31	2.20	2.77	2.99	2.88	2.31	1.93	1.30	2.94	4.00							
80	3.17	3.52	2.55	0.80	1.57	1.76	1.71	1.35	1.09	0.52	1.76	2.64							
85	1.86	1.96	1.18	0.17	0.68	0.79	0.76	0.62	0.45	0.12	0.83	1.49							
90	0.90	0.89	0.39	0.14	0.27	0.27	0.20	0.24	0.18	0.05	0.28	0.68							
95	0.37	0.31	0.23	0.15	0.23	0.22	0.11	0.17	0.17	0.05	0.16	0.28							
100	0.20	0.21	0.22	0.16	0.23	0.22	0.12	0.17	0.17	0.05	0.16	0.18							
105	0.19	0.21	0.20	0.18	0.21	0.22	0.13	0.17	0.18	0.08	0.17	0.18							
110	0.19	0.21	0.20	0.19	0.21	0.22	0.13	0.17	0.21	0.08	0.18	0.18							
115	0.19	0.21	0.20	0.20	0.21	0.22	0.13	0.18	0.21	0.10	0.16	0.18							
120	0.20	0.21	0.21	0.21	0.22	0.22	0.13	0.20	0.21	0.13	0.14	0.18							
125	0.00	0.00	0.00	0.00	0.00	0.00	0.00	0.00	0.00	0.00	0.00	0.00							
130	0.00	0.00	0.00	0.00	0.00	0.00	0.00	0.00	0.00	0.00	0.00	0.00							
135	0.00	0.00	0.00	0.00	0.00	0.00	0.00	0.00	0.00	0.00	0.00	0.00							
140	0.00	0.00	0.00	0.00	0.00	0.00	0.00	0.00	0.00	0.00	0.00	0.00							
145	0.00	0.00	0.00	0.00	0.00	0.00	0.00	0.00	0.00	0.00	0.00	0.00							
150	0.00	0.00	0.00	0.00	0.00	0.00	0.00	0.00	0.00	0.00	0.00	0.00							
155	0.00	0.00	0.00	0.00	0.00	0.00	0.00	0.00	0.00	0.00	0.00	0.00							
160	0.00	0.00	0.00	0.00	0.00	0.00	0.00	0.00	0.00	0.00	0.00	0.00							
165	0.00	0.00	0.00	0.00	0.00	0.00	0.00	0.00	0.00	0.00	0.00	0.00							
170	0.00	0.00	0.00	0.00	0.00	0.00	0.00	0.00	0.00	0.00	0.00	0.00							
175	0.00	0.00	0.00	0.00	0.00	0.00	0.00	0.00	0.00	0.00	0.00	0.00							
180	0.00	0.00	0.00	0.00	0.00	0.00	0.00	0.00	0.00	0.00	0.00	0.00							

C Range: 0 - 360DEG
C Interval: 30.0DEG
Test Speed: HIGH
Temperature:25.3DEG
Operators:LPC
Test Date:2021-10-22

γ Range: 0 - 120DEG
γ Interval: 1.0DEG
Test System:EVERFINE GO-2000B_V1 SYSTEM V2.0.362
Humidity:65.0%
Test Distance:9.200m [K=1.0000]
Remarks: