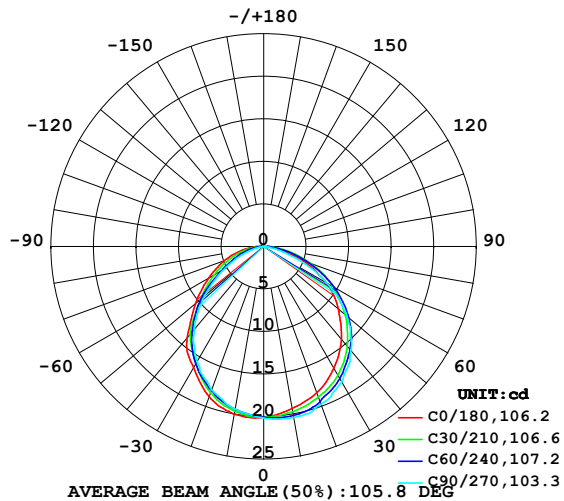


LUMINAIRE PHOTOMETRIC TEST REPORT

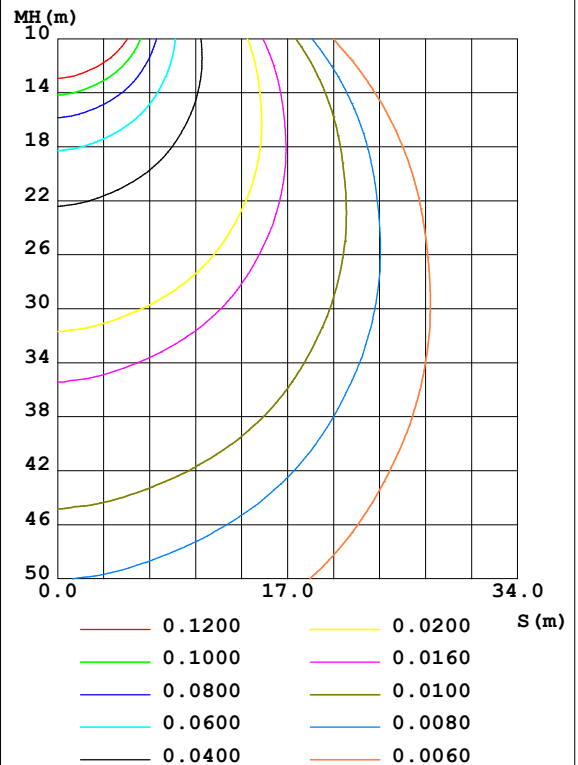
Test:U:24.00V I:0.3185A P:7.644W PF:1.000 Freq:50.00Hz Lamp Flux:0.774982x70 lm		
NAME: P01-24V-5050-70-DMX-RGBW(2700K)-B	TYPE:	WEIGHT:
SPEC.:	DIM.:	SERIAL No.:
MFR.: EVERFINE	SUR.:1*0.014	Shielding Angle:

DATA OF LAMP		PHOTOMETRIC DATA				Eff: 7.10 lm/W
MODEL	5050	I _{max} (cd)	20.40	S/MH (C0/180)	1.23	
NOMINAL POWER (W)	12	LOR (%)	100.0	S/MH (C90/270)	1.16	
RATED VOLTAGE (V)	24	TOTAL FLUX (lm)	54.249	η UP, DN (C0-180)	0.7, 52.2	
NOMINAL FLUX (lm)	0.774982	CIE CLASS	DIRECT	η UP, DN (C180-360)	0.5, 46.7	
LAMPS INSIDE	70	η up (%)	1.2	CIBSE SHR NOM	1.25	
TEST VOLTAGE (V)	24	η down (%)	98.8	CIBSE SHR MAX	1.35	

LUMINOUS INTENSITY DISTRIBUTION DIAGRAM



C0 PLANE ISOLUX DIAGRAM (UNIT:lx)



C Range: 0 - 360DEG
 C Interval: 30.0DEG
 Test Speed: HIGH
 Temperature: 25.3DEG
 Operators: LPC
 Test Date: 2021-10-21

γ Range: 0 - 120DEG
 γ Interval: 1.0DEG
 Test System: EVERFINE GO-2000B_V1 SYSTEM V2.0.362
 Humidity: 65.0%
 Test Distance: 9.200m [K=1.0000]
 Remarks:

ZONAL FLUX DIAGRAM

ZONAL FLUX DIAGRAM:

γ	C0	C45	C90	C135	C180	C225	C270	C315	γ	Φ zone	Φ total	%lum, lamp
10	19.32	19.95	20.39	20.18	20.01	19.54	19.41	19.32	0- 10	1.903	1.903	3.51,3.51
20	18.28	19.13	19.73	19.35	18.78	18.15	17.92	17.93	10- 20	5.449	7.352	13.6,13.6
30	16.51	17.68	18.37	17.32	16.48	15.95	15.66	16.17	20- 30	8.192	15.54	28.7,28.7
40	14.22	15.55	15.95	14.59	13.99	13.30	12.70	13.92	30- 40	9.772	25.32	46.7,46.7
50	11.46	12.77	12.80	10.80	10.50	9.639	9.111	11.17	40- 50	9.788	35.10	64.7,64.7
60	8.441	9.466	8.590	7.137	7.480	6.269	5.376	7.993	50- 60	8.354	43.46	80.1,80.1
70	4.964	5.805	3.921	4.199	4.927	3.674	2.384	4.880	60- 70	5.949	49.41	91.1,91.1
80	1.951	2.392	0.7873	1.721	2.526	1.601	0.4986	2.103	70- 80	3.190	52.60	97,97
90	0.4832	0.4045	0.1408	0.3342	0.5968	0.3094	0.0503	0.4451	80- 90	1.023	53.62	98.8,98.8
100	0.2061	0.2262	0.1759	0.2412	0.1256	0.1608	0.0503	0.1759	90-100	0.2379	53.86	99.3,99.3
110	0.2061	0.2161	0.2010	0.2287	0.1357	0.1834	0.0704	0.1860	100-110	0.1936	54.05	99.6,99.6
120	0.2061	0.2186	0.2211	0.2362	0.1357	0.1985	0.1357	0.1583	110-120	0.1877	54.24	100,100
130	0	0	0	0	0	0	0	0	120-130	0.0091	54.25	100,100
140	0	0	0	0	0	0	0	0	130-140	0	54.25	100,100
150	0	0	0	0	0	0	0	0	140-150	0	54.25	100,100
160	0	0	0	0	0	0	0	0	150-160	0	54.25	100,100
170	0	0	0	0	0	0	0	0	160-170	0	54.25	100,100
180	0	0	0	0	0	0	0	0	170-180	0	54.25	100,100
DEG	LUMINOUS INTENSITY:cd									UNIT:lm		

Conical surface Flux(90deg): 30.313 lm

%lum = 55.9%

%lamp = 55.9%

Conical surface Flux(120deg): 43.458 lm

%lum = 80.1%

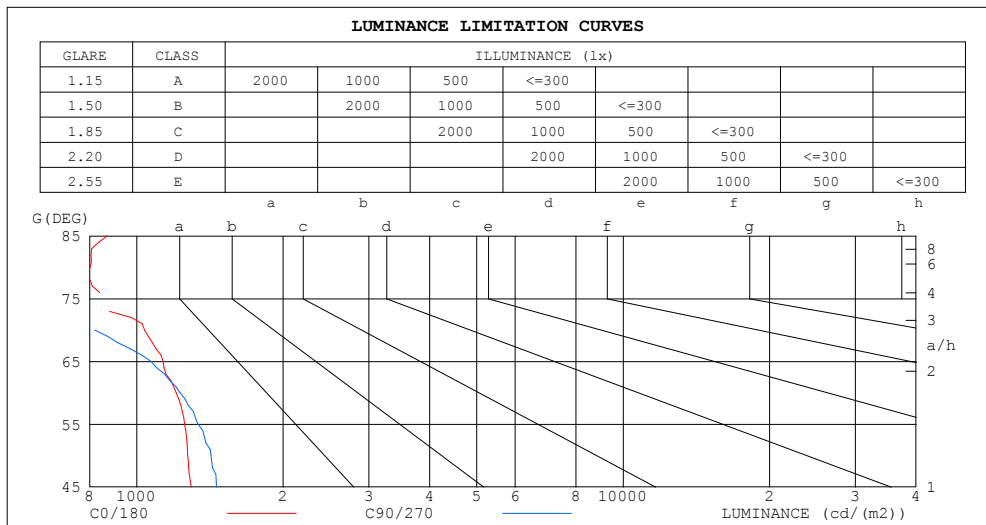
%lamp = 80.1%

C Range: 0 - 360DEG
 C Interval: 30.0DEG
 Test Speed: HIGH
 Temperature:25.3DEG
 Operators:LPC
 Test Date:2021-10-21

γ Range: 0 - 120DEG
 γ Interval: 1.0DEG
 Test System:EVERFINE GO-2000B_V1 SYSTEM V2.0.362
 Humidity:65.0%
 Test Distance:9.200m [K=1.0000]
 Remarks:

LUMINANCE LIMITATION CURVES

Test:U:24.00V I:0.3185A P:7.644W PF:1.000 Freq:50.00Hz Lamp Flux:0.774982x70 lm		
NAME: P01-24V-5050-70-DMX-RGBW(2700K)-B	TYPE:	WEIGHT:
SPEC.:	DIM.:	SERIAL No.:
MFR.: EVERFINE	SUR.:1*0.014	Shielding Angle:



LUMINANCE cd/(m2)		
G (DEG)	C0/180	C90/270
85	871	140
80	803	324
75	798	561
70	1037	819
65	1133	1070
60	1206	1227
55	1255	1336
50	1274	1423
45	1295	1459

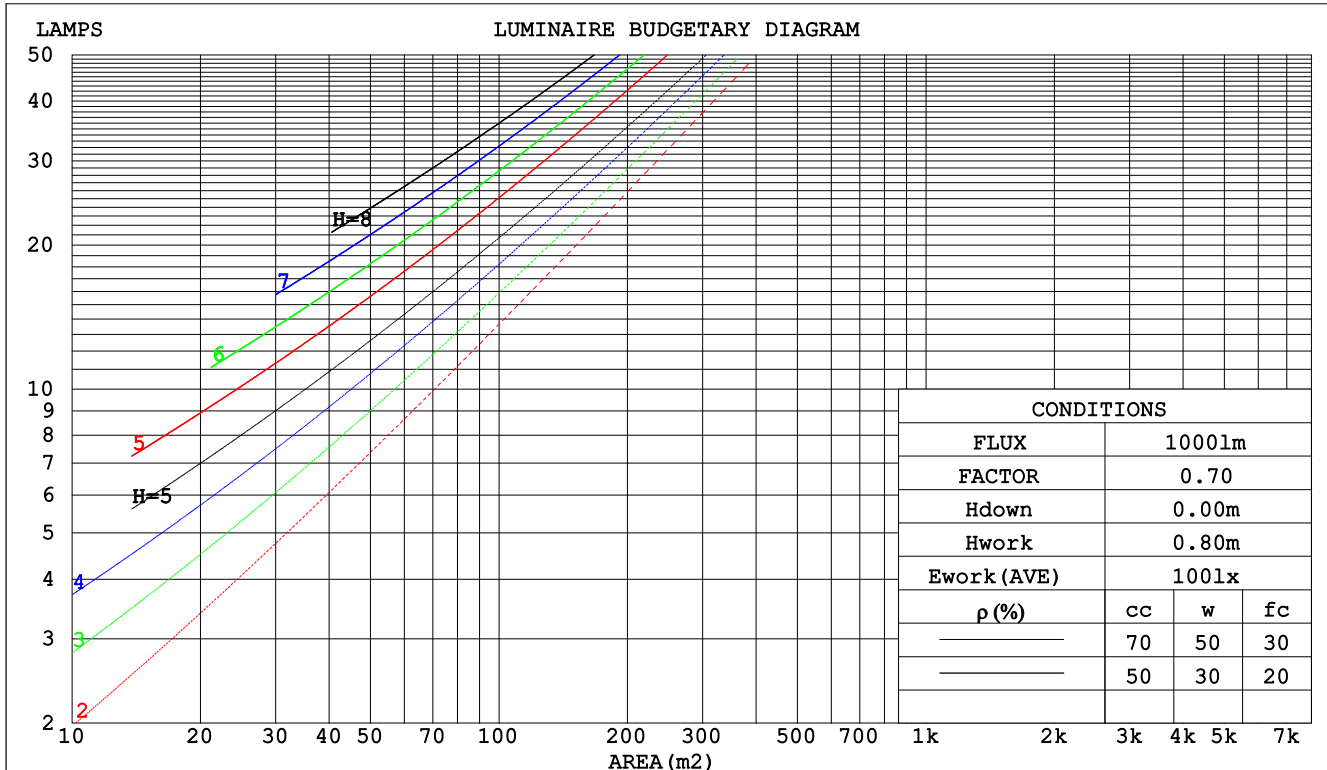
C Range: 0 - 360DEG
C Interval: 30.0DEG
Test Speed: HIGH
Temperature:25.3DEG
Operators:LPC
Test Date:2021-10-21

γ Range: 0 - 120DEG
 γ Interval: 1.0DEG
Test System:EVERFINE GO-2000B_V1 SYSTEM V2.0.362
Humidity:65.0%
Test Distance:9.200m [K=1.0000]
Remarks:

CU AND LUMINAIRE BUDGETARY ESTIMATE DIAGRAM

Test:U:24.00V I:0.3185A P:7.644W PF:1.000 Freq:50.00Hz Lamp Flux:0.774982x70 lm		
NAME: P01-24V-5050-70-DMX-RGBW(2700K)-B	TYPE:	WEIGHT:
SPEC.:	DIM.:	SERIAL No.:
MFR.: EVERFINE	SUR.:1*0.014	Shielding Angle:

pcc	80%			70%			50%			30%			10%			0
pw	50%	30%	10%	50%	30%	10%	50%	30%	10%	50%	30%	10%	50%	30%	10%	0
pfc	20%			20%			20%			20%			20%			0
RCR	RCR:Room Cavity Ratio						Coefficients of Utilization(CU)									
0.0	1.19	1.19	1.19	1.16	1.16	1.16	1.10	1.10	1.10	1.06	1.06	1.06	1.01	1.01	1.01	.99
1.0	1.04	.00	.96	1.02	.98	.95	.97	.94	.91	.93	.91	.88	.89	.87	.86	.83
2.0	.91	.84	.79	.89	.83	.78	.85	.80	.76	.82	.78	.74	.79	.75	.72	.70
3.0	.80	.72	.66	.79	.71	.65	.76	.69	.64	.73	.67	.63	.70	.65	.62	.59
4.0	.71	.63	.56	.70	.62	.56	.67	.60	.55	.65	.59	.54	.63	.57	.53	.51
5.0	.64	.55	.49	.63	.54	.48	.60	.53	.48	.58	.52	.47	.56	.51	.46	.44
6.0	.58	.49	.42	.57	.48	.42	.55	.47	.42	.53	.46	.41	.51	.45	.41	.39
7.0	.52	.44	.38	.51	.43	.37	.50	.42	.37	.48	.42	.37	.47	.41	.36	.34
8.0	.48	.39	.34	.47	.39	.33	.46	.38	.33	.44	.38	.33	.43	.37	.33	.31
9.0	.44	.36	.30	.43	.35	.30	.42	.35	.30	.41	.34	.30	.40	.34	.29	.28
10.0	.40	.33	.27	.40	.32	.27	.39	.32	.27	.38	.31	.27	.37	.31	.27	.25



C Range: 0 - 360DEG
 C Interval: 30.0DEG
 Test Speed: HIGH
 Temperature:25.3DEG
 Operators:LPC
 Test Date:2021-10-21

γ Range: 0 - 120DEG
 γ Interval: 1.0DEG
 Test System:EVERFINE GO-2000B_V1 SYSTEM V2.0.362
 Humidity:65.0%
 Test Distance:9.200m [K=1.0000]
 Remarks:

WEC AND CCEC

Test:U:24.00V I:0.3185A P:7.644W PF:1.000 Freq:50.00Hz Lamp Flux:0.774982x70 lm					
NAME: P01-24V-5050-70-DMX-RGBW(2700K)-B			TYPE:		WEIGHT:
SPEC.:			DIM.:		SERIAL No.:
MFR.: EVERFINE			SUR.:1*0.014		Shielding Angle:

pcc	80%			70%			50%			30%			10%			0	
pw	50%	30%	10%	50%	30%	10%	50%	30%	10%	50%	30%	10%	50%	30%	10%	0	
pfc	20%			20%			20%			20%			20%			0	
RCR	RCR:Room Cavity Ratio						Wall Exitance Coefficients(WEC)										
0.0																	
1.0	.300	.170	.054	.292	.167	.053	.279	.160	.051	.266	.153	.049	.254	.147	.047		
2.0	.282	.155	.047	.276	.152	.047	.264	.147	.046	.252	.142	.044	.242	.137	.043		
3.0	.262	.140	.042	.256	.137	.041	.246	.133	.040	.236	.129	.040	.226	.125	.039		
4.0	.243	.126	.037	.238	.124	.037	.228	.121	.036	.219	.118	.035	.211	.114	.035		
5.0	.225	.115	.033	.220	.113	.033	.212	.110	.032	.204	.108	.032	.196	.105	.032		
6.0	.209	.105	.030	.205	.104	.030	.197	.101	.029	.190	.099	.029	.184	.097	.029		
7.0	.195	.096	.027	.191	.095	.027	.185	.093	.027	.178	.091	.027	.172	.089	.026		
8.0	.182	.089	.025	.179	.088	.025	.173	.086	.025	.167	.085	.024	.162	.083	.024		
9.0	.171	.083	.023	.168	.082	.023	.163	.080	.023	.158	.079	.023	.153	.078	.022		
10.0	.161	.077	.021	.159	.077	.021	.154	.075	.021	.149	.074	.021	.144	.073	.021		

pcc	80%			70%			50%			30%			10%			0
pw	50%	30%	10%	50%	30%	10%	50%	30%	10%	50%	30%	10%	50%	30%	10%	0
pfc	20%			20%			20%			20%			20%			0
RCR	RCR:Room Cavity Ratio						Ceiling Cavity Exitance Coefficients(CCEC)									
0.0	.199	.199	.199	.170	.170	.170	.116	.116	.116	.067	.067	.067	.021	.021	.021	
1.0	.189	.165	.144	.161	.142	.124	.110	.097	.086	.064	.056	.050	.020	.018	.016	
2.0	.180	.141	.108	.154	.121	.093	.106	.084	.065	.061	.049	.038	.020	.016	.012	
3.0	.172	.123	.084	.147	.106	.073	.101	.074	.051	.058	.043	.030	.019	.014	.010	
4.0	.164	.110	.068	.141	.095	.059	.097	.066	.042	.056	.039	.025	.018	.013	.008	
5.0	.157	.099	.057	.135	.086	.050	.093	.060	.035	.054	.035	.021	.017	.012	.007	
6.0	.150	.091	.049	.129	.079	.043	.089	.055	.030	.052	.032	.018	.017	.011	.006	
7.0	.143	.084	.043	.123	.073	.037	.085	.051	.026	.049	.030	.016	.016	.010	.005	
8.0	.137	.078	.038	.118	.068	.033	.081	.048	.024	.047	.028	.014	.015	.009	.005	
9.0	.131	.073	.035	.113	.064	.030	.078	.045	.021	.045	.026	.013	.015	.009	.004	
10.0	.125	.069	.032	.108	.060	.028	.075	.042	.020	.044	.025	.012	.014	.008	.004	

C Range: 0 - 360DEG
C Interval: 30.0DEG
Test Speed: HIGH
Temperature:25.3DEG
Operators:LPC
Test Date:2021-10-21

γ Range: 0 - 120DEG
γ Interval: 1.0DEG
Test System:EVERFINE GO-2000B_V1 SYSTEM V2.0.362
Humidity:65.0%
Test Distance:9.200m [K=1.0000]
Remarks:

UGR(Unified Glare Rating) Table

Test:U:24.00V I:0.3185A P:7.644W PF:1.000 Freq:50.00Hz Lamp Flux:0.774982x70 lm											
NAME: P01-24V-5050-70-DMX-RGBW(2700K)-B					TYPE:			WEIGHT:			
SPEC.:					DIM.:			SERIAL No.:			
MFR.: EVERFINE					SUR.:1*0.014			Shielding Angle:			
ceiling/cavity	0.7	0.7	0.5	0.5	0.3	0.7	0.7	0.5	0.5	0.3	
walls	0.5	0.3	0.5	0.3	0.3	0.5	0.3	0.5	0.3	0.3	
working plane	0.2	0.2	0.2	0.2	0.2	0.2	0.2	0.2	0.2	0.2	
Room dimensions		Viewed crosswise					Viewed endwise				
x = 2H y = 2H	24.2	25.7	24.5	25.9	26.1	24.4	25.9	24.7	26.1	26.3	
	3H	25.6	27.0	25.9	27.2	27.5	25.5	26.9	25.8	27.1	27.4
	4H	26.1	27.3	26.4	27.6	27.9	25.8	27.0	26.1	27.3	27.6
	6H	26.4	27.6	26.7	27.9	28.2	25.8	27.0	26.2	27.3	27.6
	8H	26.5	27.7	26.8	28.0	28.3	25.8	27.0	26.2	27.3	27.6
	12H	26.6	27.7	27.0	28.0	28.4	25.8	26.9	26.1	27.2	27.5
4H	2H	24.9	26.2	25.2	26.5	26.7	25.1	26.4	25.4	26.6	26.9
	3H	26.5	27.7	26.9	28.0	28.3	26.4	27.5	26.8	27.8	28.2
	4H	27.1	28.2	27.5	28.5	28.9	26.8	27.8	27.2	28.2	28.5
	6H	27.6	28.5	28.0	28.9	29.3	27.0	27.9	27.4	28.3	28.6
	8H	27.8	28.6	28.2	29.0	29.4	27.0	27.8	27.4	28.2	28.6
	12H	27.9	28.7	28.3	29.1	29.5	27.0	27.7	27.4	28.1	28.6
8H	4H	27.4	28.3	27.9	28.7	29.1	27.1	28.0	27.6	28.4	28.8
	6H	28.1	28.8	28.5	29.2	29.7	27.5	28.2	27.9	28.6	29.1
	8H	28.3	29.0	28.8	29.4	29.9	27.6	28.2	28.0	28.6	29.1
	12H	28.6	29.1	29.1	29.6	30.1	27.6	28.1	28.1	28.6	29.1
12H	4H	27.4	28.2	27.9	28.6	29.0	27.1	27.9	27.6	28.3	28.8
	6H	28.1	28.7	28.6	29.2	29.7	27.6	28.2	28.0	28.6	29.1
	8H	28.4	29.0	28.9	29.5	30.0	27.7	28.2	28.2	28.7	29.2
Variations with the observer position at spacings:											
S = 1.0H	+ 0.2 / - 0.3					+ 0.2 / - 0.3					
1.5H	+ 0.2 / - 0.4					+ 0.3 / - 0.4					
2.0H	+ 0.2 / - 0.4					+ 0.2 / - 0.5					

CIE Pub.117, 54.25 lm Total Lamp Luminous Flux Correct (8log(F/F0) = -10.1)

C Range: 0 - 360DEG
C Interval: 30.0DEG
Test Speed: HIGH
Temperature:25.3DEG
Operators:LPC
Test Date:2021-10-21

γ Range: 0 - 120DEG
γ Interval: 1.0DEG
Test System:EVERFINE GO-2000B_V1 SYSTEM V2.0.362
Humidity:65.0%
Test Distance:9.200m [K=1.0000]
Remarks:

UTILIZATION FACTORS TABLE

Test:U:24.00V I:0.3185A P:7.644W PF:1.000 Freq:50.00Hz Lamp Flux:0.774982x70 lm		
NAME: P01-24V-5050-70-DMX-RGBW(2700K)-B	TYPE:	WEIGHT:
SPEC.:	DIM.:	SERIAL No.:
MFR.: EVERFINE	SUR.:1*0.014	Shielding Angle:

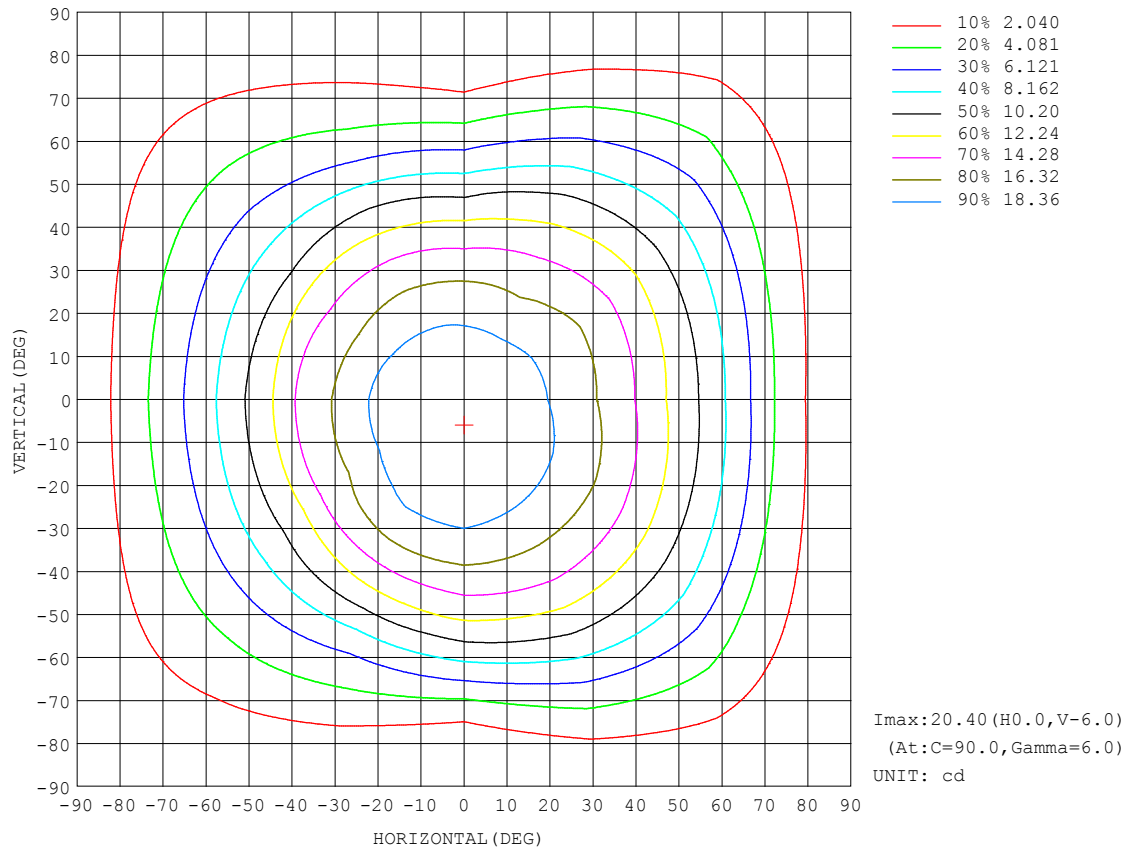
REFLECTANCE										
Ceiling	0.8	0.8	0.8	0.7	0.7	0.7	0.5	0.5	0.5	0
Walls	0.7	0.5	0.3	0.7	0.5	0.3	0.7	0.5	0.3	0
Working plane	0.2	0.2	0.2	0.2	0.2	0.2	0.2	0.2	0.2	0
ROOM INDEX	UTILIZATION FACTORS (PERCENT) k(RI) × RCR = 5									
k = 0.60	59	47	40	58	47	40	57	46	40	34
0.80	69	57	50	68	57	50	66	56	49	43
1.00	77	66	59	76	66	59	73	67	58	51
1.25	84	74	67	82	73	66	80	72	66	58
1.50	89	79	72	87	78	72	84	76	71	63
2.00	96	87	81	94	86	80	90	84	79	71
2.50	99	92	86	97	90	85	93	88	83	75
3.00	103	96	90	100	94	89	96	91	87	78
4.00	106	101	96	104	99	95	100	95	92	83
5.00	109	104	100	106	102	98	102	98	95	86
ROOM INDEX	UF (total)									Direct
According to DIN EN 13032-2 2004										
Suspended										
SHRNM = 1.25										

C Range: 0 - 360DEG
C Interval: 30.0DEG
Test Speed: HIGH
Temperature:25.3DEG
Operators:LPC
Test Date:2021-10-21

γ Range: 0 - 120DEG
 γ Interval: 1.0DEG
Test System:EVERFINE GO-2000B_V1 SYSTEM V2.0.362
Humidity:65.0%
Test Distance:9.200m [K=1.0000]
Remarks:

ISOCANDELA DIAGRAM

Test:U:24.00V I:0.3185A P:7.644W PF:1.000 Freq:50.00Hz Lamp Flux:0.774982x70 lm		
NAME: P01-24V-5050-70-DMX-RGBW(2700K)-B	TYPE:	WEIGHT:
SPEC.:	DIM.:	SERIAL No.:
MFR.: EVERFINE	SUR.:1*0.014	Shielding Angle:

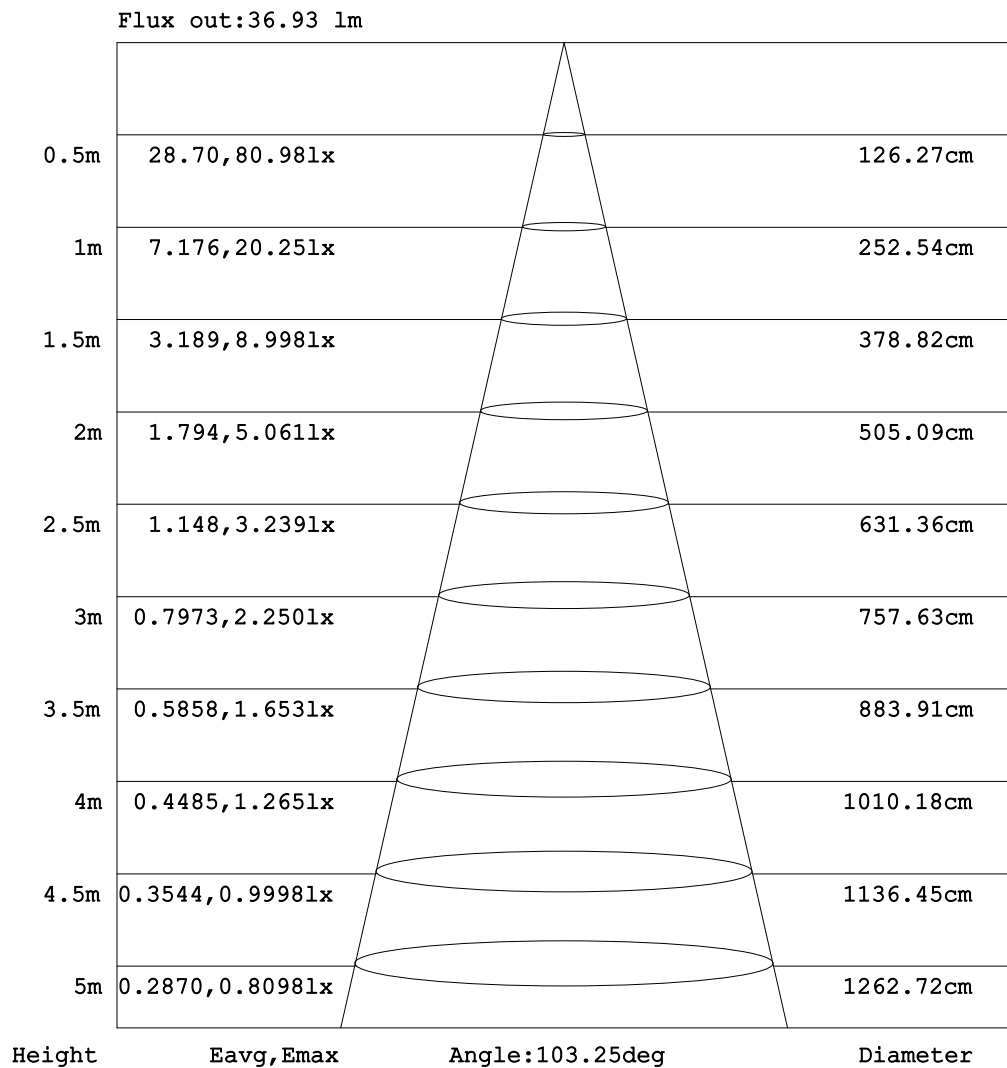


C Range: 0 - 360DEG
C Interval: 30.0DEG
Test Speed: HIGH
Temperature:25.3DEG
Operators:LPC
Test Date:2021-10-21

γ Range: 0 - 120DEG
 γ Interval: 1.0DEG
Test System:EVERFINE GO-2000B_V1 SYSTEM V2.0.362
Humidity:65.0%
Test Distance:9.200m [K=1.0000]
Remarks:

AAI Figure

Test:U:24.00V I:0.3185A P:7.644W PF:1.000 Freq:50.00Hz Lamp Flux:0.774982x70 lm		
NAME: P01-24V-5050-70-DMX-RGBW(2700K)-B	TYPE:	WEIGHT:
SPEC.:	DIM.:	SERIAL No.:
MFR.: EVERFINE	SUR.:1*0.014	Shielding Angle:



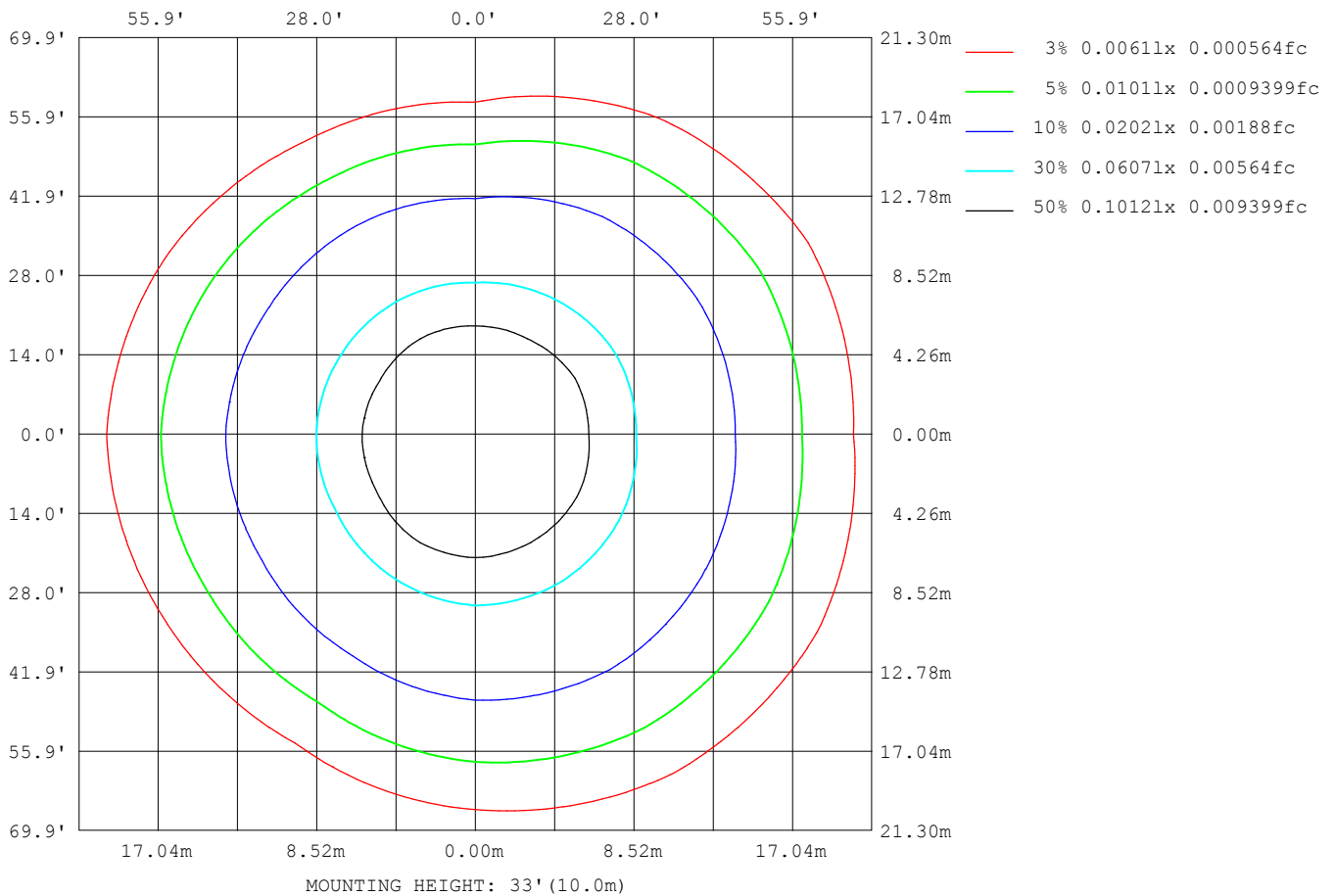
Note:The Curves indicate the illuminated area and the average illumination when the luminaire is at different distance.

C Range: 0 - 360DEG
C Interval: 30.0DEG
Test Speed: HIGH
Temperature:25.3DEG
Operators:LPC
Test Date:2021-10-21

γ Range: 0 - 120DEG
γ Interval: 1.0DEG
Test System:EVERFINE GO-2000B_V1 SYSTEM V2.0.362
Humidity:65.0%
Test Distance:9.200m [K=1.0000]
Remarks:

ISOLUX DIAGRAM

Test:U:24.00V I:0.3185A P:7.644W PF:1.000 Freq:50.00Hz Lamp Flux:0.774982x70 lm		
NAME: P01-24V-5050-70-DMX-RGBW(2700K)-B	TYPE:	WEIGHT:
SPEC.:	DIM.:	SERIAL No.:
MFR.: EVERFINE	SUR.:1*0.014	Shielding Angle:



C Range: 0 - 360DEG
C Interval: 30.0DEG
Test Speed: HIGH
Temperature:25.3DEG
Operators:LPC
Test Date:2021-10-21

γ Range: 0 - 120DEG
γ Interval: 1.0DEG
Test System:EVERFINE GO-2000B_V1 SYSTEM V2.0.362
Humidity:65.0%
Test Distance:9.200m [K=1.0000]
Remarks:

LED Avg.L Report

Test:U:24.00V I:0.3185A P:7.644W PF:1.000 Freq:50.00Hz Lamp Flux:0.774982x70 lm		
NAME: P01-24V-5050-70-DMX-RGBW(2700K)-B	TYPE:	WEIGHT:
SPEC.:	DIM.:	SERIAL No.:
MFR.: EVERFINE	SUR.:1*0.014	Shielding Angle:

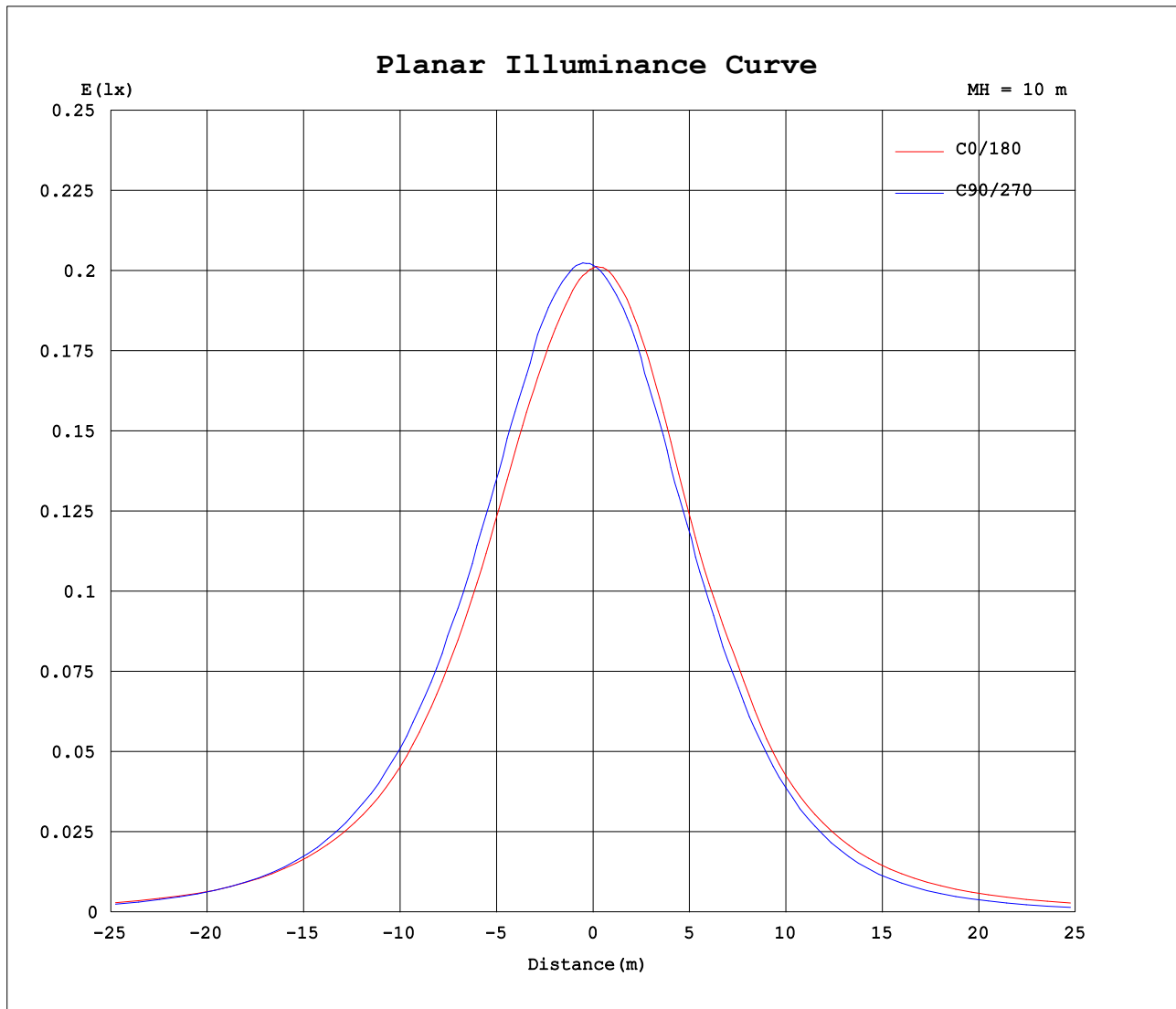
AvgL	cd/m2
L_0~180 (65) av	1088
L_0~180 (75) av	910
L_0~180 (85) av	1032
L_90~270 (65) av	856
L_90~270 (75) av	454
L_90~270 (85) av	115
L_45 (65) av	1045
L_45 (75) av	915
L_45 (85) av	812

Standard: GB/T 29293-2012

C Range: 0 - 360DEG
 C Interval: 30.0DEG
 Test Speed: HIGH
 Temperature:25.3DEG
 Operators:LPC
 Test Date:2021-10-21

γ Range: 0 - 120DEG
 γ Interval: 1.0DEG
 Test System:EVERFINE GO-2000B_V1 SYSTEM V2.0.362
 Humidity:65.0%
 Test Distance:9.200m [K=1.0000]
 Remarks:

Planar Illuminance Curve



C Range: 0 - 360DEG
C Interval: 30.0DEG
Test Speed: HIGH
Temperature: 25.3DEG
Operators: LPC
Test Date: 2021-10-21

γ Range: 0 - 120DEG
 γ Interval: 1.0DEG
Test System: EVERFINE GO-2000B_V1 SYSTEM V2.0.362
Humidity: 65.0%
Test Distance: 9.200m [K=1.0000]
Remarks:

LUMINOUS DISTRIBUTION INTENSITY DATA

Test:U:24.00V I:0.3185A P:7.644W PF:1.000 Freq:50.00Hz Lamp Flux:0.774982x70 lm		
NAME: P01-24V-5050-70-DMX-RGBW(2700K)-B	TYPE:	WEIGHT:
SPEC.:	DIM.:	SERIAL No.:
MFR.: EVERFINE	SUR.:1*0.014	Shielding Angle:

Table--1

UNIT: cd

C (DEG) γ (DEG)	0	30	60	90	120	150	180	210	240	270	300	330						
0	20.1	20.1	20.1	20.2	20.1	20.2	20.1	20.1	20.1	20.2	20.1	20.2						
5	19.8	20.0	20.2	20.4	20.3	20.2	20.2	20.0	19.8	19.8	19.7	19.9						
10	19.3	19.7	20.2	20.4	20.3	20.0	20.0	19.7	19.4	19.4	19.3	19.4						
15	18.9	19.4	19.9	20.3	20.2	19.6	19.6	19.1	18.9	18.6	18.7	18.8						
20	18.3	18.8	19.4	19.7	19.8	18.9	18.8	18.3	18.0	17.9	17.7	18.1						
25	17.5	18.2	18.7	19.1	18.9	17.9	17.7	17.2	17.1	16.9	16.7	17.5						
30	16.5	17.5	17.9	18.4	18.0	16.6	16.5	15.9	16.0	15.7	15.7	16.6						
35	15.4	16.5	16.9	17.3	16.8	15.6	15.5	14.7	14.6	14.3	14.7	15.6						
40	14.2	15.3	15.8	16.0	15.1	14.1	14.0	13.5	13.1	12.7	13.5	14.3						
45	12.8	13.9	14.6	14.4	13.3	11.9	12.0	11.5	11.4	11.0	12.2	13.1						
50	11.5	12.5	13.1	12.8	11.3	10.3	10.5	9.64	9.64	9.11	10.7	11.6						
55	10.1	10.9	11.4	10.7	9.15	8.76	8.92	8.20	7.65	7.20	9.13	10.0						
60	8.44	9.38	9.55	8.59	7.11	7.17	7.48	6.74	5.80	5.38	7.43	8.56						
65	6.70	7.77	7.59	6.33	5.38	5.74	6.17	5.44	4.31	3.80	5.83	7.04						
70	4.96	5.96	5.65	3.92	4.06	4.34	4.93	4.14	3.20	2.38	4.29	5.47						
75	2.89	4.22	3.80	2.03	2.70	3.06	3.71	2.99	2.18	1.26	2.89	3.92						
80	1.95	2.61	2.17	0.79	1.57	1.88	2.53	1.92	1.28	0.50	1.67	2.54						
85	1.06	1.30	0.96	0.17	0.74	0.92	1.46	1.02	0.59	0.11	0.76	1.38						
90	0.48	0.46	0.35	0.14	0.33	0.34	0.60	0.41	0.21	0.05	0.27	0.62						
95	0.25	0.22	0.24	0.15	0.25	0.24	0.15	0.19	0.16	0.05	0.16	0.28						
100	0.21	0.22	0.24	0.18	0.25	0.24	0.13	0.16	0.16	0.05	0.16	0.19						
105	0.21	0.22	0.22	0.19	0.22	0.24	0.13	0.16	0.18	0.07	0.18	0.18						
110	0.21	0.22	0.22	0.20	0.22	0.24	0.14	0.16	0.21	0.07	0.19	0.18						
115	0.21	0.22	0.22	0.21	0.23	0.24	0.14	0.16	0.21	0.10	0.18	0.18						
120	0.21	0.22	0.22	0.22	0.24	0.24	0.14	0.19	0.21	0.14	0.14	0.18						
125	0.00	0.00	0.00	0.00	0.00	0.00	0.00	0.00	0.00	0.00	0.00	0.00						
130	0.00	0.00	0.00	0.00	0.00	0.00	0.00	0.00	0.00	0.00	0.00	0.00						
135	0.00	0.00	0.00	0.00	0.00	0.00	0.00	0.00	0.00	0.00	0.00	0.00						
140	0.00	0.00	0.00	0.00	0.00	0.00	0.00	0.00	0.00	0.00	0.00	0.00						
145	0.00	0.00	0.00	0.00	0.00	0.00	0.00	0.00	0.00	0.00	0.00	0.00						
150	0.00	0.00	0.00	0.00	0.00	0.00	0.00	0.00	0.00	0.00	0.00	0.00						
155	0.00	0.00	0.00	0.00	0.00	0.00	0.00	0.00	0.00	0.00	0.00	0.00						
160	0.00	0.00	0.00	0.00	0.00	0.00	0.00	0.00	0.00	0.00	0.00	0.00						
165	0.00	0.00	0.00	0.00	0.00	0.00	0.00	0.00	0.00	0.00	0.00	0.00						
170	0.00	0.00	0.00	0.00	0.00	0.00	0.00	0.00	0.00	0.00	0.00	0.00						
175	0.00	0.00	0.00	0.00	0.00	0.00	0.00	0.00	0.00	0.00	0.00	0.00						
180	0.00	0.00	0.00	0.00	0.00	0.00	0.00	0.00	0.00	0.00	0.00	0.00						

C Range: 0 - 360DEG
C Interval: 30.0DEG
Test Speed: HIGH
Temperature:25.3DEG
Operators:LPC
Test Date:2021-10-21

γ Range: 0 - 120DEG
γ Interval: 1.0DEG
Test System:EVERFINE GO-2000B_V1 SYSTEM V2.0.362
Humidity:65.0%
Test Distance:9.200m [K=1.0000]
Remarks: