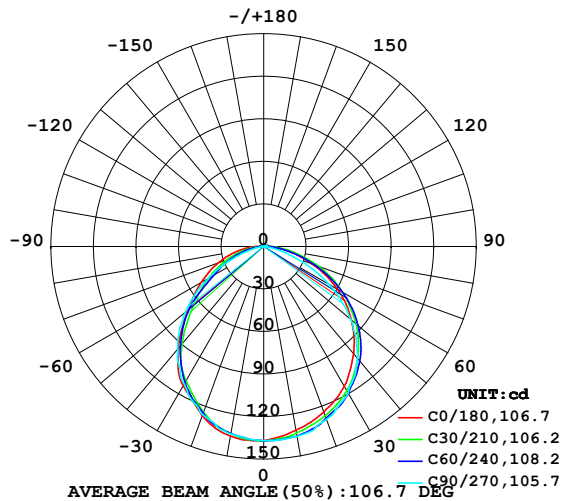


LUMINAIRE PHOTOMETRIC TEST REPORT

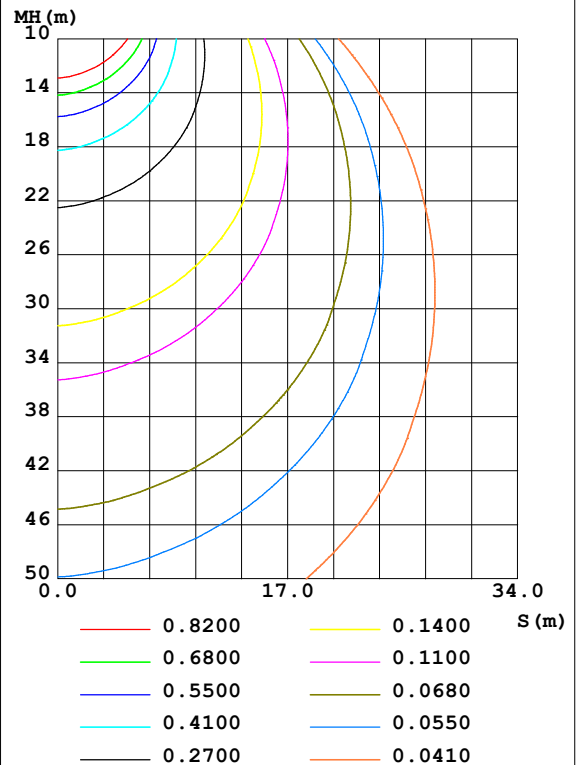
Test:U:24.00V I:0.3154A P:7.570W PF:1.000 Freq:50.00Hz Lamp Flux:5.3749x70 lm		
NAME: P01-24V-5050-70-DMX-RGBW(3000K)-G	TYPE:	WEIGHT:
SPEC.:	DIM.:	SERIAL No.:
MFR.: EVERFINE	SUR.:1*0.014	Shielding Angle:

DATA OF LAMP		PHOTOMETRIC DATA Eff: 49.70 lm/W			
MODEL	5050	I _{max} (cd)	137.2	S/MH(C0/180)	1.24
NOMINAL POWER(W)	12	LOR(%)	100.0	S/MH(C90/270)	1.23
RATED VOLTAGE(V)	24	TOTAL FLUX(lm)	376.24	η UP,DN(C0-180)	0.9,49.5
NOMINAL FLUX(lm)	5.3749	CIE CLASS	DIRECT	η UP,DN(C180-360)	0.7,48.8
LAMPS INSIDE	70	η up(%)	1.6	CIBSE SHR NOM	1.25
TEST VOLTAGE(V)	24	η down(%)	98.4	CIBSE SHR MAX	1.35

LUMINOUS INTENSITY DISTRIBUTION DIAGRAM



C0 PLANE ISOLUX DIAGRAM (UNIT:lx)



C Range: 0 - 360DEG
 C Interval: 30.0DEG
 Test Speed: HIGH
 Temperature: 25.3DEG
 Operators: LPC
 Test Date: 2021-10-20

γ Range: 0 - 120DEG
 γ Interval: 1.0DEG
 Test System: EVERFINE GO-2000B_V1 SYSTEM V2.0.362
 Humidity: 65.0%
 Test Distance: 9.200m [K=1.0000]
 Remarks:

ZONAL FLUX DIAGRAM

ZONAL FLUX DIAGRAM:

γ	C0	C45	C90	C135	C180	C225	C270	C315	γ	Φ zone	Φ total	%lum, lamp
10	131.5	134.6	135.9	134.1	135.8	134.0	134.3	134.3	0- 10	12.94	12.94	3.44,3.44
20	124.1	128.0	129.7	124.4	126.9	124.6	126.1	127.3	10- 20	36.98	49.92	13.3,13.3
30	113.8	118.5	119.3	110.8	113.7	110.2	112.2	116.9	20- 30	55.59	105.5	28,28
40	98.69	104.3	102.9	90.12	93.76	90.54	94.55	103.9	30- 40	66.51	172.0	45.7,45.7
50	80.76	86.09	80.25	66.01	69.74	66.53	72.36	86.54	40- 50	67.10	239.1	63.6,63.6
60	59.99	64.07	52.82	42.49	50.90	42.76	45.75	65.26	50- 60	57.75	296.9	78.9,78.9
70	36.36	39.76	24.46	25.01	34.28	25.57	19.42	42.20	60- 70	41.93	338.8	90,90
80	16.07	17.40	5.363	9.916	18.21	10.69	3.914	20.33	70- 80	23.18	362.0	96.2,96.2
90	4.168	4.166	1.246	2.412	5.188	2.507	0.6936	5.265	80- 90	8.109	370.1	98.4,98.4
100	1.769	2.081	1.493	2.149	1.684	1.769	0.9290	1.624	90-100	2.374	372.5	99,99
110	1.844	2.146	1.674	2.246	1.653	1.702	1.086	1.664	100-110	1.853	374.3	99.5,99.5
120	2.051	2.149	1.829	2.377	1.608	1.764	1.312	1.540	110-120	1.849	376.2	100,100
130	0	0	0	0	0	0	0	0	120-130	0.0884	376.2	100,100
140	0	0	0	0	0	0	0	0	130-140	0	376.2	100,100
150	0	0	0	0	0	0	0	0	140-150	0	376.2	100,100
160	0	0	0	0	0	0	0	0	150-160	0	376.2	100,100
170	0	0	0	0	0	0	0	0	160-170	0	376.2	100,100
180	0	0	0	0	0	0	0	0	170-180	0	376.2	100,100
DEG	LUMINOUS INTENSITY:cd									UNIT:lm		

Conical surface Flux(90deg): 206.15 lm

%lum = 54.8%

%lamp = 54.8%

Conical surface Flux(120deg): 296.86 lm

%lum = 78.9%

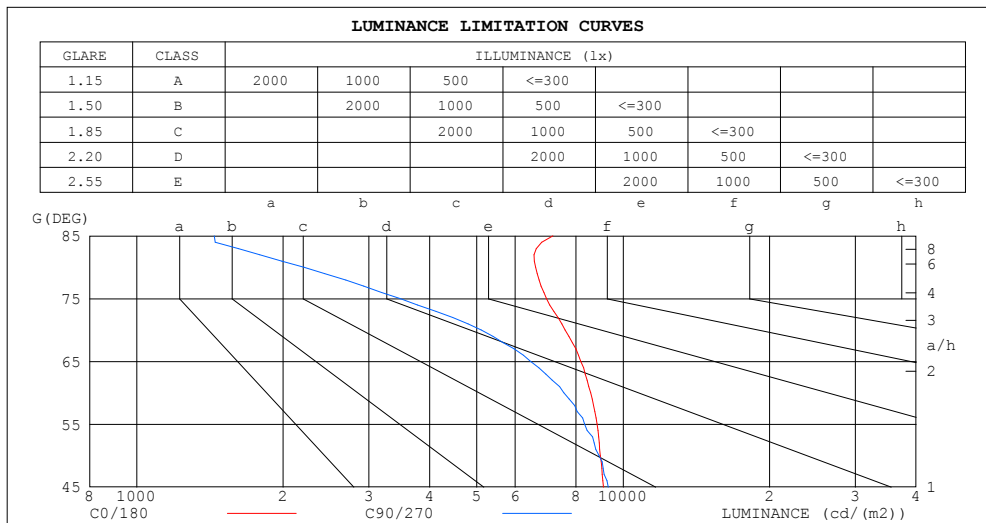
%lamp = 78.9%

C Range: 0 - 360DEG
 C Interval: 30.0DEG
 Test Speed: HIGH
 Temperature:25.3DEG
 Operators:LPC
 Test Date:2021-10-20

γ Range: 0 - 120DEG
 γ Interval: 1.0DEG
 Test System:EVERFINE GO-2000B_V1 SYSTEM V2.0.362
 Humidity:65.0%
 Test Distance:9.200m [K=1.0000]
 Remarks:

LUMINANCE LIMITATION CURVES

Test:U:24.00V I:0.3154A P:7.570W PF:1.000 Freq:50.00Hz Lamp Flux:5.3749x70 lm		
NAME: P01-24V-5050-70-DMX-RGBW(3000K)-G	TYPE:	WEIGHT:
SPEC.:	DIM.:	SERIAL No.:
MFR.: EVERFINE	SUR.:1*0.014	Shielding Angle:



LUMINANCE cd/(m2)		
G (DEG)	C0/180	C90/270
85	7166	1444
80	6610	2206
75	6961	3480
70	7594	5108
65	8178	6446
60	8570	7546
55	8839	8333
50	8974	8917
45	9103	9324

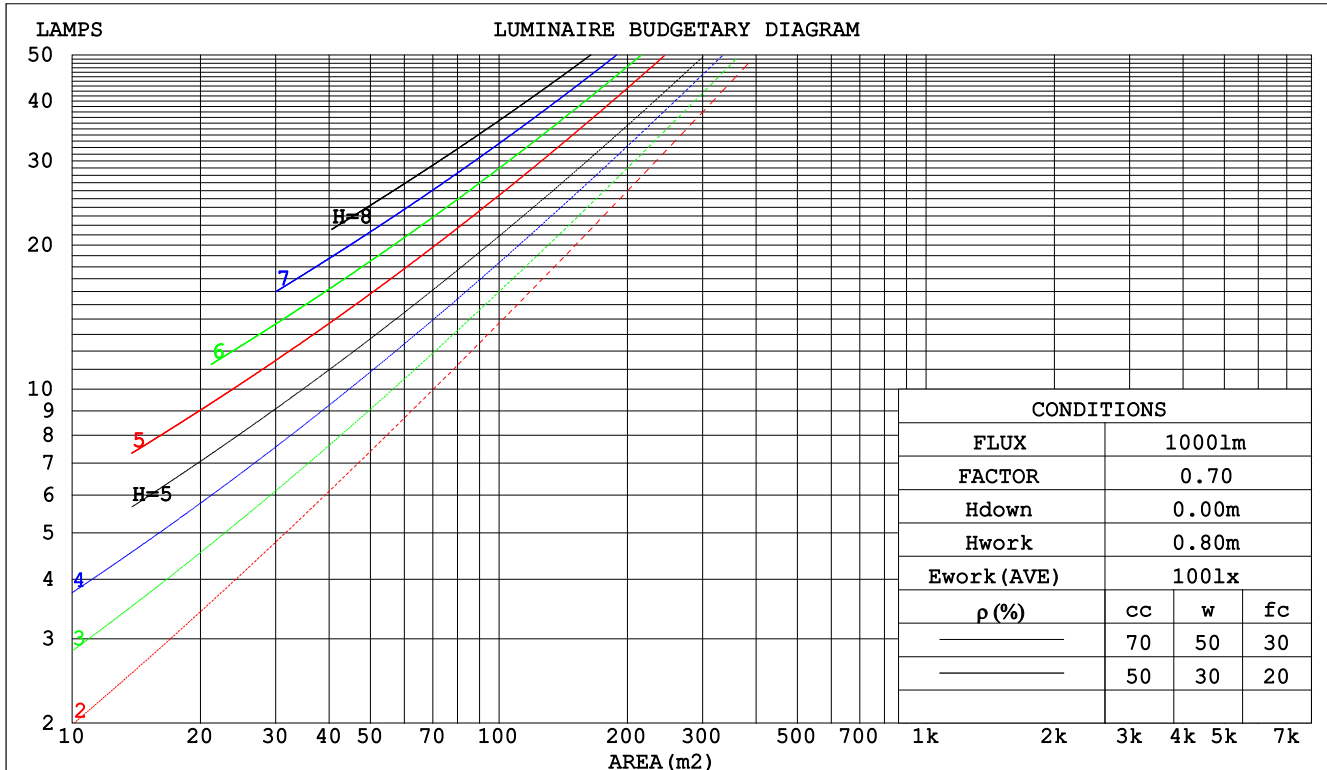
C Range: 0 - 360DEG
C Interval: 30.0DEG
Test Speed: HIGH
Temperature:25.3DEG
Operators:LPC
Test Date:2021-10-20

γ Range: 0 - 120DEG
 γ Interval: 1.0DEG
Test System:EVERFINE GO-2000B_V1 SYSTEM V2.0.362
Humidity:65.0%
Test Distance:9.200m [K=1.0000]
Remarks:

CU AND LUMINAIRE BUDGETARY ESTIMATE DIAGRAM

Test:U:24.00V I:0.3154A P:7.570W PF:1.000 Freq:50.00Hz Lamp Flux:5.3749x70 lm		
NAME: P01-24V-5050-70-DMX-RGBW(3000K)-G	TYPE:	WEIGHT:
SPEC.:	DIM.:	SERIAL No.:
MFR.: EVERFINE	SUR.:1*0.014	Shielding Angle:

pcc	80%			70%			50%			30%			10%			0
pw	50%	30%	10%	50%	30%	10%	50%	30%	10%	50%	30%	10%	50%	30%	10%	0
pfc	20%			20%			20%			20%			20%			0
RCR	RCR:Room Cavity Ratio						Coefficients of Utilization(CU)									
0.0	1.19	1.19	1.19	1.16	1.16	1.16	1.10	1.10	1.10	1.05	1.05	1.05	1.01	1.01	1.01	.98
1.0	1.04	.00	.96	1.01	.97	.94	.97	.94	.91	.93	.90	.88	.89	.87	.85	.83
2.0	.91	.84	.78	.89	.82	.77	.85	.80	.75	.81	.77	.73	.78	.75	.71	.69
3.0	.80	.72	.65	.78	.71	.65	.75	.69	.63	.72	.67	.62	.69	.65	.61	.58
4.0	.71	.62	.56	.69	.61	.55	.67	.60	.54	.64	.58	.53	.62	.57	.52	.50
5.0	.63	.54	.48	.62	.54	.48	.60	.53	.47	.58	.51	.46	.56	.50	.46	.43
6.0	.57	.48	.42	.56	.48	.42	.54	.47	.41	.52	.46	.41	.51	.45	.40	.38
7.0	.52	.43	.37	.51	.43	.37	.49	.42	.36	.48	.41	.36	.46	.40	.36	.34
8.0	.47	.39	.33	.47	.39	.33	.45	.38	.33	.44	.37	.32	.42	.37	.32	.30
9.0	.43	.35	.30	.43	.35	.30	.42	.34	.29	.40	.34	.29	.39	.33	.29	.27
10.0	.40	.32	.27	.40	.32	.27	.38	.32	.27	.37	.31	.27	.36	.31	.26	.25



C Range: 0 - 360DEG
 C Interval: 30.0DEG
 Test Speed: HIGH
 Temperature:25.3DEG
 Operators:LPC
 Test Date:2021-10-20

γ Range: 0 - 120DEG
 γ Interval: 1.0DEG
 Test System:EVERFINE GO-2000B_V1 SYSTEM V2.0.362
 Humidity:65.0%
 Test Distance:9.200m [K=1.0000]
 Remarks:

WEC AND CCEC

Test:U:24.00V I:0.3154A P:7.570W PF:1.000 Freq:50.00Hz Lamp Flux:5.3749x70 lm		
NAME: P01-24V-5050-70-DMX-RGBW(3000K)-G	TYPE:	WEIGHT:
SPEC.:	DIM.:	SERIAL No.:
MFR.: EVERFINE	SUR.:1*0.014	Shielding Angle:

pcc	80%			70%			50%			30%			10%			0	
pw	50%	30%	10%	50%	30%	10%	50%	30%	10%	50%	30%	10%	50%	30%	10%	0	
pfc	20%			20%			20%			20%			20%			0	
RCR	RCR:Room Cavity Ratio						Wall Exitance Coefficients(WEC)										
0.0																	
1.0	.305	.173	.055	.297	.170	.054	.283	.162	.052	.270	.156	.050	.258	.150	.048		
2.0	.286	.157	.048	.279	.154	.047	.267	.148	.046	.255	.143	.045	.244	.138	.044		
3.0	.265	.141	.042	.259	.139	.042	.248	.134	.041	.237	.130	.040	.228	.126	.039		
4.0	.244	.127	.037	.239	.125	.037	.229	.122	.036	.220	.118	.036	.212	.115	.035		
5.0	.226	.115	.033	.222	.114	.033	.213	.111	.033	.205	.108	.032	.197	.105	.032		
6.0	.210	.105	.030	.206	.104	.030	.198	.102	.030	.191	.099	.029	.184	.097	.029		
7.0	.196	.097	.027	.192	.096	.027	.185	.094	.027	.179	.092	.027	.172	.090	.026		
8.0	.183	.089	.025	.180	.089	.025	.173	.087	.025	.168	.085	.024	.162	.083	.024		
9.0	.172	.083	.023	.169	.082	.023	.163	.081	.023	.158	.079	.023	.153	.078	.022		
10.0	.162	.078	.022	.159	.077	.021	.154	.075	.021	.149	.074	.021	.144	.073	.021		

pcc	80%			70%			50%			30%			10%			0
pw	50%	30%	10%	50%	30%	10%	50%	30%	10%	50%	30%	10%	50%	30%	10%	0
pfc	20%			20%			20%			20%			20%			0
RCR	RCR:Room Cavity Ratio						Ceiling Cavity Exitance Coefficients(CCEC)									
0.0	.203	.203	.203	.173	.173	.173	.118	.118	.118	.068	.068	.068	.022	.022	.022	
1.0	.193	.169	.147	.165	.145	.127	.113	.100	.088	.065	.058	.051	.021	.019	.016	
2.0	.184	.145	.111	.158	.124	.096	.108	.086	.067	.062	.050	.039	.020	.016	.013	
3.0	.176	.127	.088	.151	.110	.076	.104	.076	.053	.060	.044	.031	.019	.014	.010	
4.0	.168	.114	.072	.145	.098	.062	.099	.068	.044	.058	.040	.026	.019	.013	.009	
5.0	.161	.103	.061	.138	.089	.053	.095	.062	.037	.055	.037	.022	.018	.012	.007	
6.0	.154	.095	.053	.132	.082	.046	.091	.058	.032	.053	.034	.019	.017	.011	.006	
7.0	.147	.088	.047	.127	.076	.041	.087	.053	.029	.051	.032	.017	.016	.010	.006	
8.0	.141	.082	.042	.121	.071	.037	.084	.050	.026	.049	.030	.015	.016	.010	.005	
9.0	.135	.077	.038	.116	.067	.034	.080	.047	.024	.047	.028	.014	.015	.009	.005	
10.0	.129	.073	.036	.111	.063	.031	.077	.045	.022	.045	.026	.013	.015	.009	.004	

C Range: 0 - 360DEG
C Interval: 30.0DEG
Test Speed: HIGH
Temperature:25.3DEG
Operators:LPC
Test Date:2021-10-20

γ Range: 0 - 120DEG
γ Interval: 1.0DEG
Test System:EVERFINE GO-2000B_V1 SYSTEM V2.0.362
Humidity:65.0%
Test Distance:9.200m [K=1.0000]
Remarks:

UGR(Unified Glare Rating) Table

Test:U:24.00V I:0.3154A P:7.570W PF:1.000 Freq:50.00Hz Lamp Flux:5.3749x70 lm											
NAME: P01-24V-5050-70-DMX-RGBW(3000K) -G					TYPE:			WEIGHT:			
SPEC.:					DIM.:			SERIAL No.:			
MFR.: EVERFINE					SUR.:1*0.014			Shielding Angle:			
ceiling/cavity	0.7	0.7	0.5	0.5	0.3	0.7	0.7	0.5	0.5	0.3	
walls	0.5	0.3	0.5	0.3	0.3	0.5	0.3	0.5	0.3	0.3	
working plane	0.2	0.2	0.2	0.2	0.2	0.2	0.2	0.2	0.2	0.2	
Room dimensions		Viewed crosswise				Viewed endwise					
x = 2H y = 2H	24.2	25.7	24.5	25.9	26.1	24.0	25.5	24.3	25.7	25.9	
	3H	25.7	27.0	26.0	27.3	27.6	25.0	26.4	25.3	26.6	26.9
	4H	26.2	27.5	26.6	27.8	28.1	25.3	26.6	25.6	26.8	27.1
	6H	26.7	27.9	27.0	28.2	28.5	25.3	26.6	25.7	26.9	27.2
	8H	26.8	28.0	27.2	28.3	28.6	25.3	26.5	25.7	26.8	27.1
	12H	27.0	28.1	27.3	28.4	28.7	25.3	26.4	25.7	26.7	27.1
4H	2H	24.8	26.1	25.2	26.4	26.7	24.7	26.0	25.0	26.3	26.5
	3H	26.6	27.7	26.9	28.0	28.3	26.0	27.1	26.4	27.4	27.8
	4H	27.3	28.3	27.7	28.7	29.0	26.4	27.4	26.8	27.8	28.2
	6H	27.8	28.8	28.3	29.1	29.5	26.6	27.5	27.0	27.9	28.3
	8H	28.1	28.9	28.5	29.3	29.7	26.6	27.5	27.1	27.9	28.3
	12H	28.3	29.0	28.7	29.4	29.9	26.6	27.4	27.1	27.8	28.3
8H	4H	27.5	28.4	28.0	28.8	29.2	26.8	27.6	27.2	28.0	28.5
	6H	28.3	29.0	28.8	29.5	29.9	27.2	27.9	27.7	28.3	28.8
	8H	28.6	29.3	29.1	29.7	30.2	27.3	27.9	27.8	28.4	28.9
	12H	29.0	29.5	29.5	30.0	30.5	27.4	27.9	27.9	28.4	28.9
12H	4H	27.6	28.3	28.0	28.7	29.2	26.8	27.6	27.3	28.0	28.5
	6H	28.4	29.0	28.9	29.5	29.9	27.3	27.9	27.8	28.4	28.9
	8H	28.8	29.3	29.3	29.8	30.3	27.5	28.0	28.0	28.5	29.0
Variations with the observer position at spacings:											
S = 1.0H	+ 0.2 / - 0.2					+ 0.2 / - 0.3					
1.5H	+ 0.2 / - 0.4					+ 0.3 / - 0.5					
2.0H	+ 0.2 / - 0.4					+ 0.3 / - 0.6					

CIE Pub.117, 376.2 lm Total Lamp Luminous Flux Correct (8log(F/F0) = -3.4)

C Range: 0 - 360DEG
C Interval: 30.0DEG
Test Speed: HIGH
Temperature:25.3DEG
Operators:LPC
Test Date:2021-10-20

γ Range: 0 - 120DEG
γ Interval: 1.0DEG
Test System:EVERFINE GO-2000B_V1 SYSTEM V2.0.362
Humidity:65.0%
Test Distance:9.200m [K=1.0000]
Remarks:

UTILIZATION FACTORS TABLE

Test:U:24.00V I:0.3154A P:7.570W PF:1.000 Freq:50.00Hz Lamp Flux:5.3749x70 lm		
NAME: P01-24V-5050-70-DMX-RGBW(3000K)-G	TYPE:	WEIGHT:
SPEC.:	DIM.:	SERIAL No.:
MFR.: EVERFINE	SUR.:1*0.014	Shielding Angle:

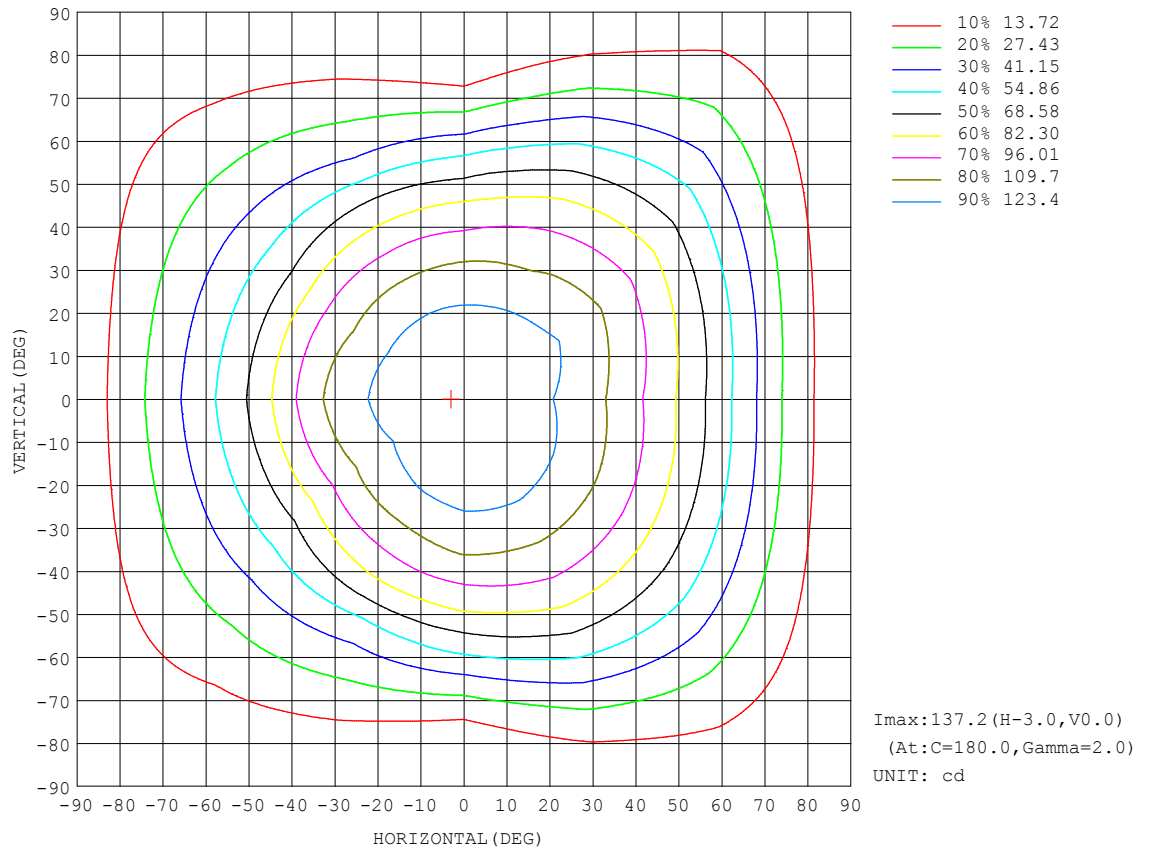
REFLECTANCE										
Ceiling	0.8	0.8	0.8	0.7	0.7	0.7	0.5	0.5	0.5	0
Walls	0.7	0.5	0.3	0.7	0.5	0.3	0.7	0.5	0.3	0
Working plane	0.2	0.2	0.2	0.2	0.2	0.2	0.2	0.2	0.2	0
ROOM INDEX	UTILIZATION FACTORS (PERCENT) k(RI) x RCR = 5									
k = 0.60	58	47	40	57	46	40	56	46	39	33
0.80	68	57	49	67	56	49	65	55	49	42
1.00	76	65	58	75	65	58	73	66	57	50
1.25	83	73	66	82	72	66	79	71	65	57
1.50	88	79	72	87	78	71	83	76	70	62
2.00	95	87	80	93	85	79	89	83	78	70
2.50	99	91	85	97	90	84	93	87	82	74
3.00	102	95	90	100	94	89	96	90	86	78
4.00	106	100	96	103	98	94	99	95	91	82
5.00	108	103	99	106	101	98	101	98	94	85
ROOM INDEX	UF (total)									Direct
According to DIN EN 13032-2 2004										
Suspended										
SHRNM = 1.25										

C Range: 0 - 360DEG
C Interval: 30.0DEG
Test Speed: HIGH
Temperature:25.3DEG
Operators:LPC
Test Date:2021-10-20

γ Range: 0 - 120DEG
 γ Interval: 1.0DEG
Test System:EVERFINE GO-2000B_V1 SYSTEM V2.0.362
Humidity:65.0%
Test Distance:9.200m [K=1.0000]
Remarks:

ISOCANDELA DIAGRAM

Test:U:24.00V I:0.3154A P:7.570W PF:1.000 Freq:50.00Hz Lamp Flux:5.3749x70 lm		
NAME: P01-24V-5050-70-DMX-RGBW(3000K)-G	TYPE:	WEIGHT:
SPEC.:	DIM.:	SERIAL No.:
MFR.: EVERFINE	SUR.:1*0.014	Shielding Angle:

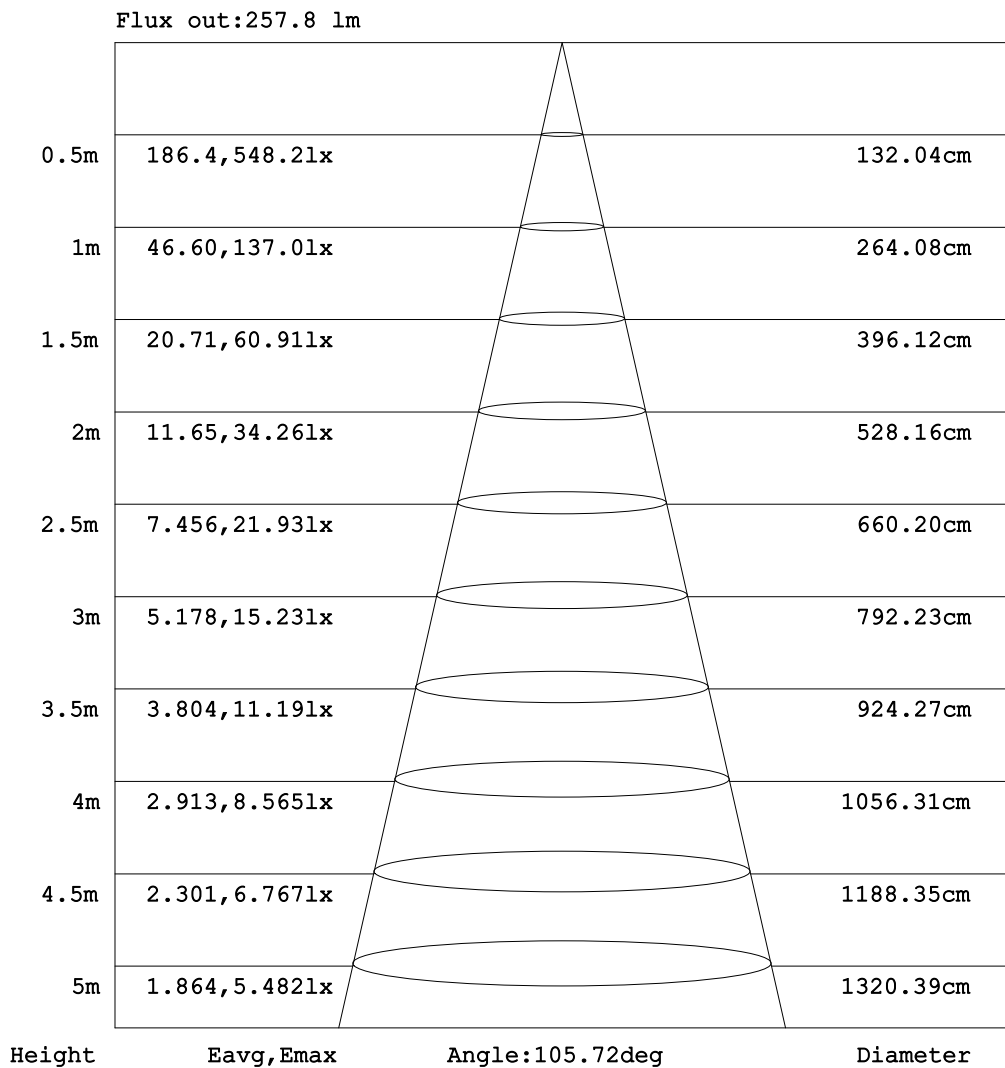


C Range: 0 - 360DEG
C Interval: 30.0DEG
Test Speed: HIGH
Temperature:25.3DEG
Operators:LPC
Test Date:2021-10-20

γ Range: 0 - 120DEG
γ Interval: 1.0DEG
Test System:EVERFINE GO-2000B_V1 SYSTEM V2.0.362
Humidity:65.0%
Test Distance:9.200m [K=1.0000]
Remarks:

AAI Figure

Test:U:24.00V I:0.3154A P:7.570W PF:1.000 Freq:50.00Hz Lamp Flux:5.3749x70 lm		
NAME: P01-24V-5050-70-DMX-RGBW(3000K)-G	TYPE:	WEIGHT:
SPEC.:	DIM.:	SERIAL No.:
MFR.: EVERFINE	SUR.:1*0.014	Shielding Angle:



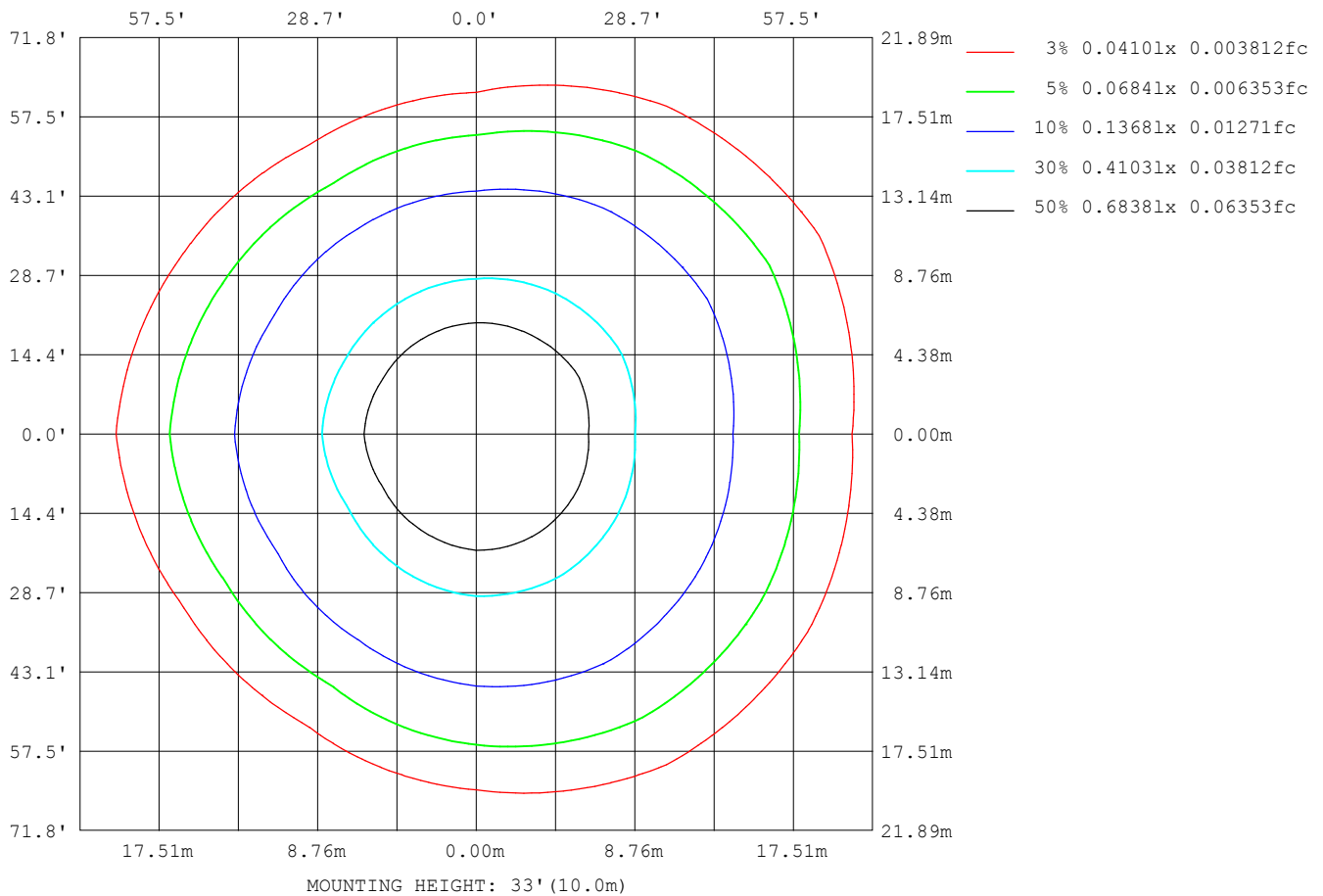
Note:The Curves indicate the illuminated area and the average illumination when the luminaire is at different distance.

C Range: 0 - 360DEG
C Interval: 30.0DEG
Test Speed: HIGH
Temperature:25.3DEG
Operators:LPC
Test Date:2021-10-20

γ Range: 0 - 120DEG
γ Interval: 1.0DEG
Test System:EVERFINE GO-2000B_V1 SYSTEM V2.0.362
Humidity:65.0%
Test Distance:9.200m [K=1.0000]
Remarks:

ISOLUX DIAGRAM

Test:U:24.00V I:0.3154A P:7.570W PF:1.000 Freq:50.00Hz Lamp Flux:5.3749x70 lm		
NAME: P01-24V-5050-70-DMX-RGBW(3000K)-G	TYPE:	WEIGHT:
SPEC.:	DIM.:	SERIAL No.:
MFR.: EVERFINE	SUR.:1*0.014	Shielding Angle:



C Range: 0 - 360DEG
 C Interval: 30.0DEG
 Test Speed: HIGH
 Temperature:25.3DEG
 Operators:LPC
 Test Date:2021-10-20

γ Range: 0 - 120DEG
 γ Interval: 1.0DEG
 Test System:EVERFINE GO-2000B_V1 SYSTEM V2.0.362
 Humidity:65.0%
 Test Distance:9.200m [K=1.0000]
 Remarks:

LED Avg.L Report

Test:U:24.00V I:0.3154A P:7.570W PF:1.000 Freq:50.00Hz Lamp Flux:5.3749x70 lm		
NAME: P01-24V-5050-70-DMX-RGBW(3000K)-G	TYPE:	WEIGHT:
SPEC.:	DIM.:	SERIAL No.:
MFR.: EVERFINE	SUR.:1*0.014	Shielding Angle:

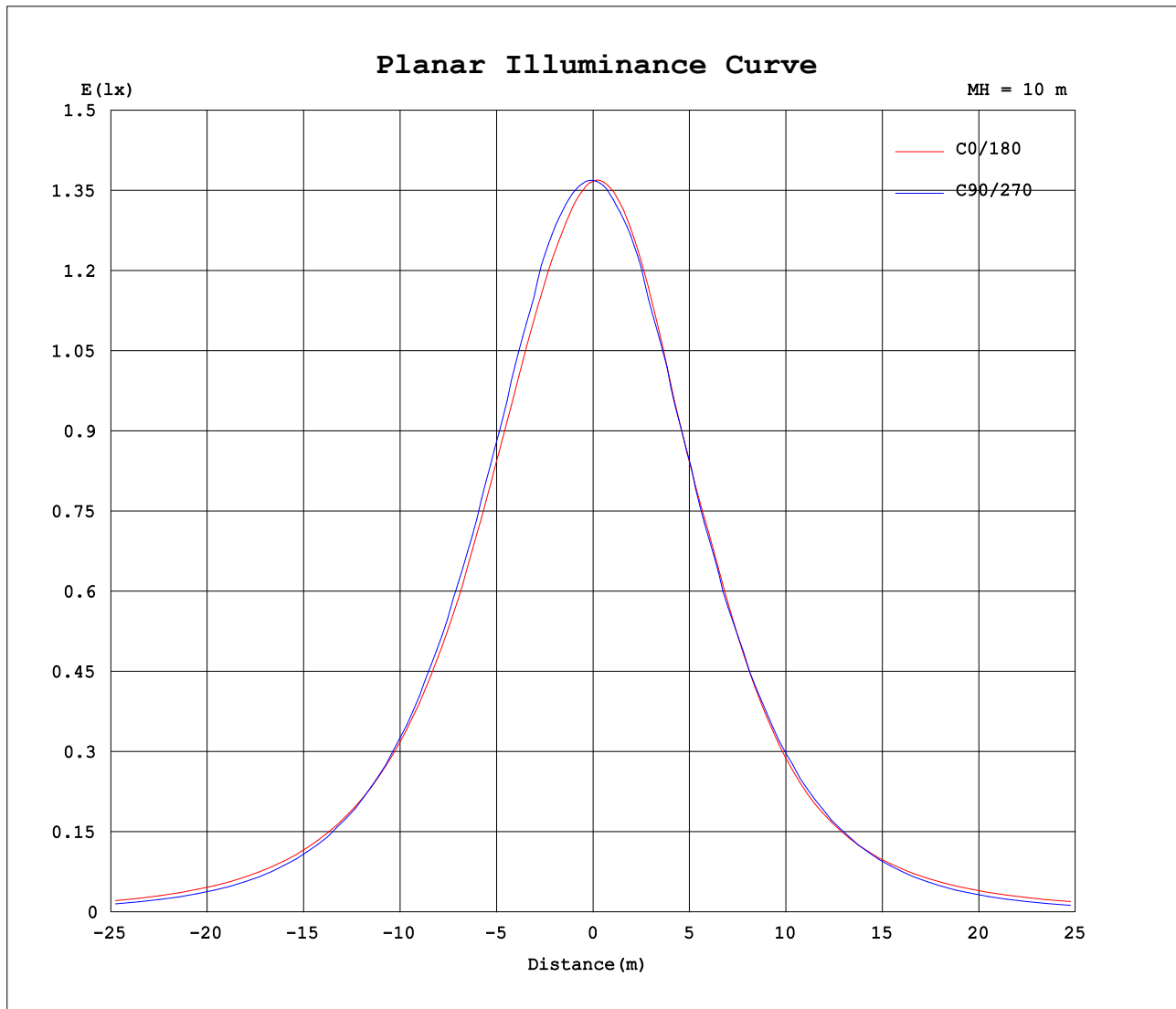
AvgL	cd/m2
L_0~180 (65) av	7678
L_0~180 (75) av	7090
L_0~180 (85) av	8048
L_90~270 (65) av	5933
L_90~270 (75) av	3103
L_90~270 (85) av	1141
L_45 (65) av	7402
L_45 (75) av	6600
L_45 (85) av	6507

Standard: GB/T 29293-2012

C Range: 0 - 360DEG
 C Interval: 30.0DEG
 Test Speed: HIGH
 Temperature:25.3DEG
 Operators:LPC
 Test Date:2021-10-20

γ Range: 0 - 120DEG
 γ Interval: 1.0DEG
 Test System:EVERFINE GO-2000B_V1 SYSTEM V2.0.362
 Humidity:65.0%
 Test Distance:9.200m [K=1.0000]
 Remarks:

Planar Illuminance Curve



C Range: 0 - 360DEG
C Interval: 30.0DEG
Test Speed: HIGH
Temperature: 25.3DEG
Operators: LPC
Test Date: 2021-10-20

γ Range: 0 - 120DEG
 γ Interval: 1.0DEG
Test System: EVERFINE GO-2000B_V1 SYSTEM V2.0.362
Humidity: 65.0%
Test Distance: 9.200m [K=1.0000]
Remarks:

LUMINOUS DISTRIBUTION INTENSITY DATA

Test:U:24.00V I:0.3154A P:7.570W PF:1.000 Freq:50.00Hz Lamp Flux:5.3749x70 lm		
NAME: P01-24V-5050-70-DMX-RGBW(3000K)-G	TYPE:	WEIGHT:
SPEC.:	DIM.:	SERIAL No.:
MFR.: EVERFINE	SUR.:1*0.014	Shielding Angle:

Table--1

UNIT: cd

C (DEG) γ (DEG)	0	30	60	90	120	150	180	210	240	270	300	330						
0	137	137	137	137	137	137	137	137	137	137	137	137						
5	135	136	137	137	136	136	137	137	136	136	136	136						
10	132	134	136	136	135	133	136	134	134	134	134	134						
15	128	130	133	134	132	129	133	130	131	131	132	131						
20	124	127	129	130	127	122	127	124	125	126	126	128						
25	119	123	125	124	121	115	120	117	119	120	120	124						
30	114	117	120	119	113	109	114	110	111	112	115	119						
35	106	111	113	112	104	98.5	105	102	101	104	108	113						
40	98.7	103	105	103	94.0	86.2	93.8	89.6	91.5	94.6	101	106						
45	90.1	94.6	96.9	92.3	83.2	73.4	81.5	76.8	80.5	84.2	92.9	98.5						
50	80.8	85.2	87.0	80.2	69.7	62.3	69.7	64.6	68.5	72.4	83.6	89.5						
55	71.0	74.5	76.1	66.9	53.7	52.4	59.9	54.4	53.6	59.4	73.1	79.5						
60	60.0	64.1	64.0	52.8	41.9	43.0	50.9	44.9	40.7	45.7	61.7	68.9						
65	48.4	53.3	51.1	38.1	32.8	34.3	42.5	36.0	31.7	32.1	49.8	58.1						
70	36.4	41.5	38.1	24.5	24.1	25.9	34.3	27.7	23.5	19.4	38.0	46.4						
75	25.2	29.7	26.0	12.6	16.0	17.9	26.2	19.6	15.7	9.88	26.4	35.1						
80	16.1	19.0	15.8	5.36	9.27	10.6	18.2	12.3	9.12	3.91	16.4	24.3						
85	8.74	10.8	7.65	1.76	4.40	5.17	10.9	6.31	4.36	1.02	8.23	14.5						
90	4.17	5.13	3.20	1.25	2.35	2.48	5.19	2.89	2.12	0.69	3.22	7.31						
95	2.12	2.52	2.16	1.33	2.16	2.06	2.28	1.96	1.79	0.78	1.70	3.12						
100	1.77	2.05	2.12	1.49	2.18	2.12	1.68	1.85	1.69	0.93	1.60	1.65						
105	1.77	2.08	1.92	1.66	2.01	2.22	1.68	1.87	1.46	1.10	1.47	1.53						
110	1.84	2.16	2.14	1.67	2.22	2.27	1.65	1.76	1.64	1.09	1.80	1.53						
115	1.94	2.23	2.27	1.75	2.31	2.33	1.61	1.72	1.77	1.19	1.81	1.56						
120	2.05	2.30	2.00	1.83	2.38	2.37	1.61	1.72	1.81	1.31	1.44	1.64						
125	0.00	0.00	0.00	0.00	0.00	0.00	0.00	0.00	0.00	0.00	0.00	0.00						
130	0.00	0.00	0.00	0.00	0.00	0.00	0.00	0.00	0.00	0.00	0.00	0.00						
135	0.00	0.00	0.00	0.00	0.00	0.00	0.00	0.00	0.00	0.00	0.00	0.00						
140	0.00	0.00	0.00	0.00	0.00	0.00	0.00	0.00	0.00	0.00	0.00	0.00						
145	0.00	0.00	0.00	0.00	0.00	0.00	0.00	0.00	0.00	0.00	0.00	0.00						
150	0.00	0.00	0.00	0.00	0.00	0.00	0.00	0.00	0.00	0.00	0.00	0.00						
155	0.00	0.00	0.00	0.00	0.00	0.00	0.00	0.00	0.00	0.00	0.00	0.00						
160	0.00	0.00	0.00	0.00	0.00	0.00	0.00	0.00	0.00	0.00	0.00	0.00						
165	0.00	0.00	0.00	0.00	0.00	0.00	0.00	0.00	0.00	0.00	0.00	0.00						
170	0.00	0.00	0.00	0.00	0.00	0.00	0.00	0.00	0.00	0.00	0.00	0.00						
175	0.00	0.00	0.00	0.00	0.00	0.00	0.00	0.00	0.00	0.00	0.00	0.00						
180	0.00	0.00	0.00	0.00	0.00	0.00	0.00	0.00	0.00	0.00	0.00	0.00						

C Range: 0 - 360DEG
C Interval: 30.0DEG
Test Speed: HIGH
Temperature:25.3DEG
Operators:LPC
Test Date:2021-10-20

γ Range: 0 - 120DEG
γ Interval: 1.0DEG
Test System:EVERFINE GO-2000B_V1 SYSTEM V2.0.362
Humidity:65.0%
Test Distance:9.200m [K=1.0000]
Remarks: