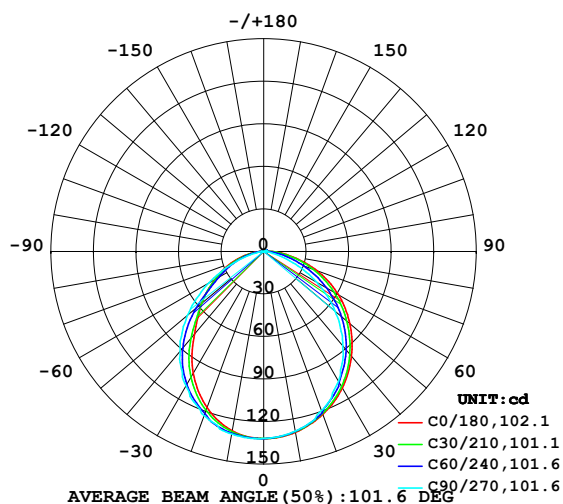


LUMINAIRE PHOTOMETRIC TEST REPORT

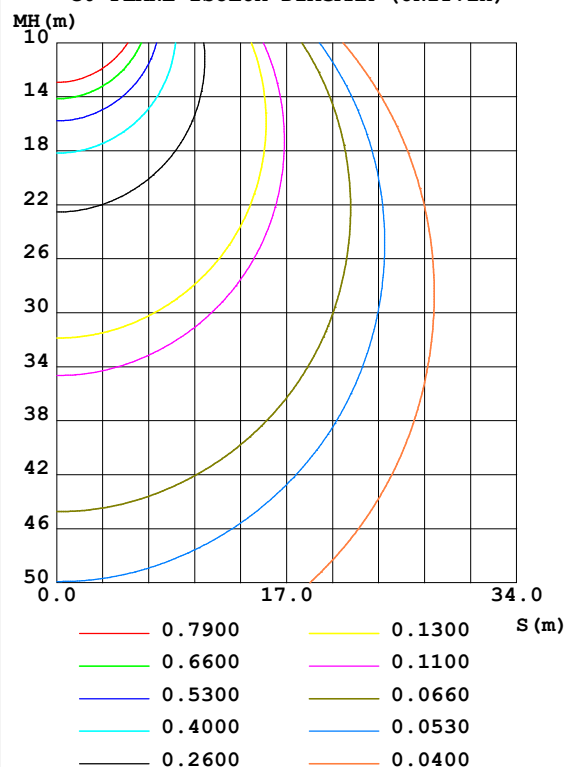
Test:U:24.00V I:0.3184A P:7.642W PF:1.000 Freq:50.00Hz Lamp Flux:4.88725x70 lm		
NAME: P01-24V-5050-70-DMX-RGBW(4000K)-W	TYPE:	WEIGHT:
SPEC.:	DIM.:	SERIAL No.:
MFR.: OLYMPIA	SUR.:1*0.014	Shielding Angle:

DATA OF LAMP		PHOTOMETRIC DATA Eff: 44.77 lm/W			
MODEL	5050	I _{max} (cd)	132.1	S/MH(C0/180)	1.14
NOMINAL POWER(W)	12	LOR(%)	100.0	S/MH(C90/270)	1.24
RATED VOLTAGE(V)	24	TOTAL FLUX(lm)	342.11	η UP,DN(C0-180)	0.9,49.4
NOMINAL FLUX(lm)	4.88725	CIE CLASS	DIRECT	η UP,DN(C180-360)	0.6,49.0
LAMPS INSIDE	70	η up(%)	1.5	CIBSE SHR NOM	1.25
TEST VOLTAGE(V)	24	η down(%)	98.5	CIBSE SHR MAX	1.35

LUMINOUS INTENSITY DISTRIBUTION DIAGRAM



C0 PLANE ISOLUX DIAGRAM (UNIT:lx)



C Range: 0 - 360DEG
 C Interval: 30.0DEG
 Test Speed: HIGH
 Temperature: 25.3DEG
 Operators: LPC
 Test Date: 2021-10-22

γ Range: 0 - 120DEG
 γ Interval: 1.0DEG
 Test System: EVERFINE GO-2000B_V1 SYSTEM V2.0.362
 Humidity: 65.0%
 Test Distance: 9.200m [K=1.0000]
 Remarks:

ZONAL FLUX DIAGRAM

ZONAL FLUX DIAGRAM:

γ	C0	C45	C90	C135	C180	C225	C270	C315	γ	Φ zone	Φ total	%lum, lamp
10	129.5	129.0	128.7	128.1	128.4	129.6	130.8	130.5	0- 10	12.47	12.47	3.65,3.65
20	122.2	121.3	119.4	118.1	117.1	120.4	123.2	123.5	10- 20	35.45	47.93	14,14
30	111.1	108.3	105.7	101.7	99.34	105.5	109.5	112.1	20- 30	52.60	100.5	29.4,29.4
40	96.34	92.54	86.77	79.84	76.04	84.30	91.77	97.58	30- 40	61.24	161.8	47.3,47.3
50	79.44	74.14	65.94	56.36	57.27	59.79	70.54	79.15	40- 50	60.18	221.9	64.9,64.9
60	60.74	54.18	43.07	36.35	39.90	37.96	45.01	58.32	50- 60	51.08	273.0	79.8,79.8
70	40.12	33.79	19.92	21.38	24.82	21.96	20.10	36.61	60- 70	36.77	309.8	90.6,90.6
80	19.62	15.46	4.676	8.752	10.74	8.694	3.457	16.87	70- 80	20.22	330.0	96.5,96.5
90	5.774	3.859	1.166	2.194	1.771	1.561	0.5579	3.940	80- 90	6.855	336.9	98.5,98.5
100	1.523	1.839	1.368	1.980	1.106	1.289	0.7884	1.304	90-100	1.950	338.8	99,99
110	1.518	1.909	1.583	2.078	1.307	1.453	0.9448	1.329	100-110	1.582	340.4	99.5,99.5
120	1.674	1.900	1.734	2.214	1.457	1.593	1.171	1.292	110-120	1.631	342.0	100,100
130	0	0	0	0	0	0	0	0	120-130	0.0789	342.1	100,100
140	0	0	0	0	0	0	0	0	130-140	0	342.1	100,100
150	0	0	0	0	0	0	0	0	140-150	0	342.1	100,100
160	0	0	0	0	0	0	0	0	150-160	0	342.1	100,100
170	0	0	0	0	0	0	0	0	160-170	0	342.1	100,100
180	0	0	0	0	0	0	0	0	170-180	0	342.1	100,100
DEG	LUMINOUS INTENSITY:cd									UNIT:lm		

Conical surface Flux(90deg): 192.54 lm

%lum = 56.3%

%lamp = 56.3%

Conical surface Flux(120deg): 273.02 lm

%lum = 79.8%

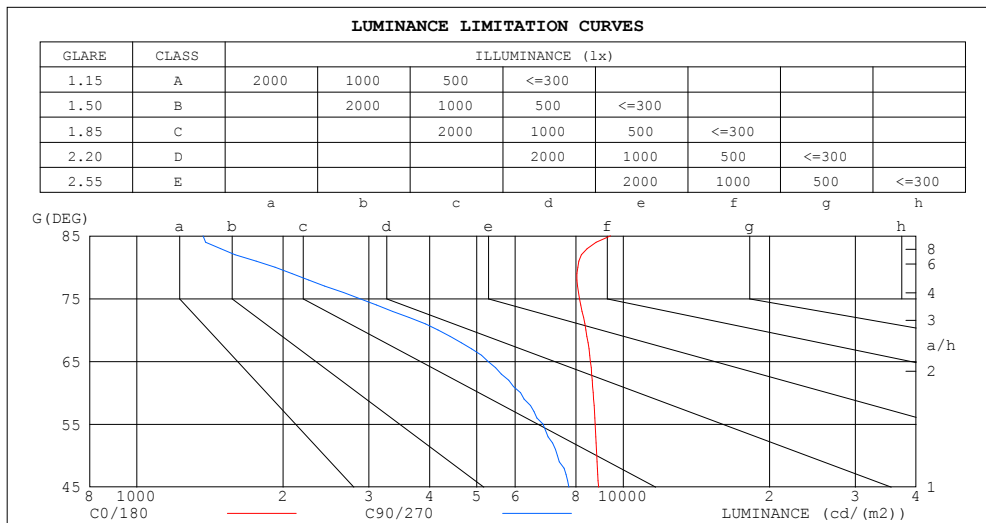
%lamp = 79.8%

C Range: 0 - 360DEG
 C Interval: 30.0DEG
 Test Speed: HIGH
 Temperature:25.3DEG
 Operators:LPC
 Test Date:2021-10-22

γ Range: 0 - 120DEG
 γ Interval: 1.0DEG
 Test System:EVERFINE GO-2000B_V1 SYSTEM V2.0.362
 Humidity:65.0%
 Test Distance:9.200m [K=1.0000]
 Remarks:

LUMINANCE LIMITATION CURVES

Test:U:24.00V I:0.3184A P:7.642W PF:1.000 Freq:50.00Hz Lamp Flux:4.88725x70 lm		
NAME: P01-24V-5050-70-DMX-RGBW(4000K)-W	TYPE:	WEIGHT:
SPEC.:	DIM.:	SERIAL No.:
MFR.: OLYMPIA	SUR.:1*0.014	Shielding Angle:



LUMINANCE cd/(m2)		
G (DEG)	C0/180	C90/270
85	9420	1370
80	8070	1924
75	8131	2871
70	8379	4161
65	8562	5269
60	8677	6153
55	8759	6838
50	8828	7327
45	8900	7740

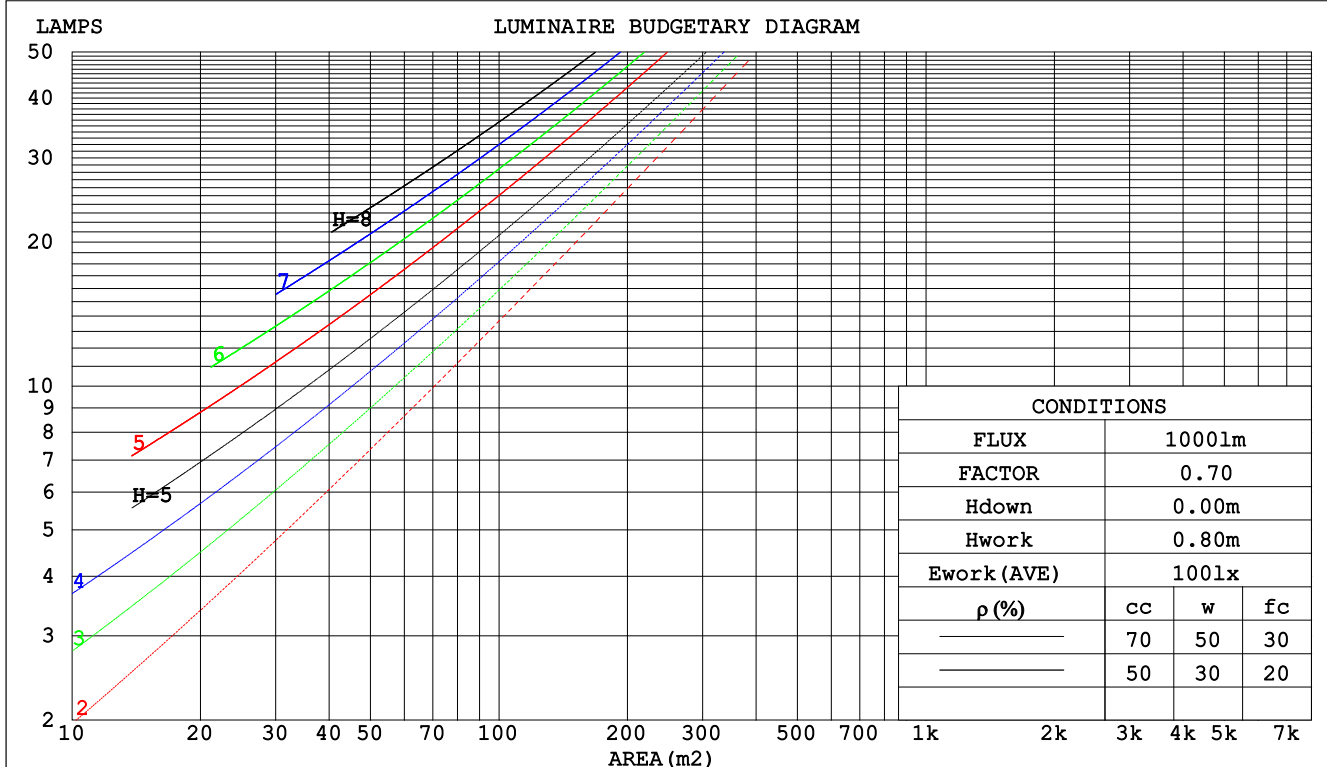
C Range: 0 - 360DEG
C Interval: 30.0DEG
Test Speed: HIGH
Temperature:25.3DEG
Operators:LPC
Test Date:2021-10-22

γ Range: 0 - 120DEG
γ Interval: 1.0DEG
Test System:EVERFINE GO-2000B_V1 SYSTEM V2.0.362
Humidity:65.0%
Test Distance:9.200m [K=1.0000]
Remarks:

CU AND LUMINAIRE BUDGETARY ESTIMATE DIAGRAM

Test:U:24.00V I:0.3184A P:7.642W PF:1.000 Freq:50.00Hz Lamp Flux:4.88725x70 lm		
NAME: P01-24V-5050-70-DMX-RGBW(4000K)-W	TYPE:	WEIGHT:
SPEC.:	DIM.:	SERIAL No.:
MFR.: OLYMPIA	SUR.:1*0.014	Shielding Angle:

pcc	80%			70%			50%			30%			10%			0
pw	50%	30%	10%	50%	30%	10%	50%	30%	10%	50%	30%	10%	50%	30%	10%	0
pfc	20%			20%			20%			20%			20%			0
RCR	RCR:Room Cavity Ratio						Coefficients of Utilization(CU)									
0.0	1.19	1.19	1.19	1.16	1.16	1.16	1.10	1.10	1.10	1.05	1.05	1.05	1.01	1.01	1.01	.98
1.0	1.04	.00	.96	1.02	.98	.94	.97	.94	.91	.93	.90	.88	.89	.87	.85	.83
2.0	.91	.85	.79	.89	.83	.78	.85	.80	.76	.82	.78	.74	.79	.75	.72	.70
3.0	.80	.72	.66	.79	.71	.65	.76	.69	.64	.73	.67	.63	.70	.65	.62	.59
4.0	.72	.63	.56	.70	.62	.56	.67	.60	.55	.65	.59	.54	.63	.57	.53	.51
5.0	.64	.55	.49	.63	.55	.48	.61	.53	.48	.58	.52	.47	.57	.51	.47	.44
6.0	.58	.49	.43	.57	.49	.43	.55	.48	.42	.53	.47	.42	.51	.46	.41	.39
7.0	.53	.44	.38	.52	.44	.38	.50	.43	.37	.48	.42	.37	.47	.41	.37	.35
8.0	.48	.40	.34	.47	.39	.34	.46	.39	.34	.45	.38	.33	.43	.37	.33	.31
9.0	.44	.36	.31	.44	.36	.31	.42	.35	.30	.41	.35	.30	.40	.34	.30	.28
10.0	.41	.33	.28	.40	.33	.28	.39	.32	.28	.38	.32	.27	.37	.31	.27	.25



C Range: 0 - 360DEG
 C Interval: 30.0DEG
 Test Speed: HIGH
 Temperature:25.3DEG
 Operators:LPC
 Test Date:2021-10-22

γ Range: 0 - 120DEG
 γ Interval: 1.0DEG
 Test System:EVERFINE GO-2000B_V1 SYSTEM V2.0.362
 Humidity:65.0%
 Test Distance:9.200m [K=1.0000]
 Remarks:

WEC AND CCEC

Test:U:24.00V I:0.3184A P:7.642W PF:1.000 Freq:50.00Hz Lamp Flux:4.88725x70 lm		
NAME: P01-24V-5050-70-DMX-RGBW(4000K)-W	TYPE:	WEIGHT:
SPEC.:	DIM.:	SERIAL No.:
MFR.: OLYMPIA	SUR.:1*0.014	Shielding Angle:

pcc	80%			70%			50%			30%			10%			0	
pw	50%	30%	10%	50%	30%	10%	50%	30%	10%	50%	30%	10%	50%	30%	10%	0	
pfc	20%			20%			20%			20%			20%			0	
RCR	RCR:Room Cavity Ratio						Wall Exitance Coefficients(WEC)										
0.0																	
1.0	.300	.170	.054	.292	.167	.053	.278	.159	.051	.265	.153	.049	.253	.147	.047		
2.0	.281	.154	.047	.275	.151	.047	.262	.146	.045	.251	.141	.044	.240	.136	.043		
3.0	.261	.139	.042	.255	.137	.041	.244	.132	.040	.234	.128	.039	.224	.124	.038		
4.0	.241	.125	.037	.236	.124	.037	.226	.120	.036	.217	.117	.035	.209	.114	.035		
5.0	.224	.114	.033	.219	.112	.033	.210	.110	.032	.202	.107	.032	.195	.104	.031		
6.0	.208	.104	.030	.204	.103	.030	.196	.100	.029	.189	.098	.029	.182	.096	.028		
7.0	.194	.096	.027	.190	.095	.027	.183	.093	.027	.177	.091	.026	.171	.089	.026		
8.0	.181	.089	.025	.178	.088	.025	.172	.086	.025	.166	.084	.024	.160	.082	.024		
9.0	.170	.082	.023	.167	.082	.023	.162	.080	.023	.156	.078	.022	.151	.077	.022		
10.0	.160	.077	.021	.158	.076	.021	.153	.075	.021	.148	.073	.021	.143	.072	.021		

pcc	80%			70%			50%			30%			10%			0
pw	50%	30%	10%	50%	30%	10%	50%	30%	10%	50%	30%	10%	50%	30%	10%	0
pfc	20%			20%			20%			20%			20%			0
RCR	RCR:Room Cavity Ratio						Ceiling Cavity Exitance Coefficients(CCEC)									
0.0	.202	.202	.202	.173	.173	.173	.118	.118	.118	.068	.068	.068	.022	.022	.022	
1.0	.191	.168	.147	.164	.144	.126	.112	.099	.087	.064	.057	.051	.021	.018	.016	
2.0	.183	.144	.111	.156	.124	.096	.107	.086	.067	.062	.050	.039	.020	.016	.013	
3.0	.175	.126	.088	.150	.109	.076	.103	.076	.053	.059	.044	.031	.019	.014	.010	
4.0	.167	.113	.071	.143	.097	.062	.098	.068	.044	.057	.040	.026	.018	.013	.009	
5.0	.159	.102	.060	.137	.089	.052	.094	.062	.037	.055	.036	.022	.018	.012	.007	
6.0	.152	.094	.052	.131	.081	.045	.090	.057	.032	.052	.033	.019	.017	.011	.006	
7.0	.146	.087	.046	.125	.075	.040	.087	.053	.028	.050	.031	.017	.016	.010	.006	
8.0	.139	.081	.041	.120	.070	.036	.083	.049	.026	.048	.029	.015	.016	.010	.005	
9.0	.133	.076	.038	.115	.066	.033	.080	.047	.023	.046	.027	.014	.015	.009	.005	
10.0	.128	.072	.035	.110	.063	.030	.076	.044	.022	.045	.026	.013	.014	.009	.004	

C Range: 0 - 360DEG
C Interval: 30.0DEG
Test Speed: HIGH
Temperature:25.3DEG
Operators:LPC
Test Date:2021-10-22

γ Range: 0 - 120DEG
γ Interval: 1.0DEG
Test System:EVERFINE GO-2000B_V1 SYSTEM V2.0.362
Humidity:65.0%
Test Distance:9.200m [K=1.0000]
Remarks:

UGR(Unified Glare Rating) Table

Test:U:24.00V I:0.3184A P:7.642W PF:1.000 Freq:50.00Hz Lamp Flux:4.88725x70 lm										
NAME: P01-24V-5050-70-DMX-RGBW(4000K)-W					TYPE:			WEIGHT:		
SPEC.:					DIM.:			SERIAL No.:		
MFR.: OLYMPIA					SUR.:1*0.014			Shielding Angle:		
ceiling/cavity	0.7	0.7	0.5	0.5	0.3	0.7	0.7	0.5	0.5	0.3
walls	0.5	0.3	0.5	0.3	0.3	0.5	0.3	0.5	0.3	0.3
working plane	0.2	0.2	0.2	0.2	0.2	0.2	0.2	0.2	0.2	0.2
Room dimensions	Viewed crosswise					Viewed endwise				
x = 2H y = 2H	24.4	25.8	24.7	26.1	26.3	23.3	24.7	23.6	25.0	25.2
3H	26.1	27.4	26.4	27.7	28.0	24.3	25.6	24.6	25.9	26.1
4H	26.8	28.1	27.2	28.4	28.7	24.5	25.8	24.9	26.1	26.4
6H	27.4	28.6	27.8	28.9	29.2	24.6	25.8	25.0	26.1	26.4
8H	27.7	28.8	28.0	29.1	29.5	24.6	25.8	25.0	26.1	26.4
12H	27.9	29.0	28.3	29.3	29.7	24.6	25.7	24.9	26.0	26.3
4H 2H	24.9	26.2	25.2	26.4	26.7	24.0	25.3	24.4	25.6	25.9
3H	26.8	27.9	27.2	28.2	28.6	25.3	26.4	25.6	26.7	27.0
4H	27.7	28.7	28.1	29.0	29.4	25.7	26.7	26.1	27.0	27.4
6H	28.4	29.3	28.9	29.7	30.1	25.9	26.8	26.3	27.2	27.6
8H	28.8	29.6	29.2	30.0	30.4	25.9	26.7	26.3	27.1	27.6
12H	29.1	29.8	29.5	30.2	30.7	25.9	26.7	26.4	27.1	27.5
8H 4H	27.9	28.7	28.3	29.1	29.5	26.1	27.0	26.6	27.4	27.8
6H	28.8	29.5	29.3	30.0	30.4	26.5	27.2	27.0	27.6	28.1
8H	29.3	29.9	29.8	30.3	30.8	26.6	27.3	27.1	27.7	28.2
12H	29.7	30.2	30.2	30.7	31.2	26.7	27.2	27.2	27.7	28.2
12H 4H	27.9	28.7	28.3	29.1	29.5	26.2	27.0	26.6	27.4	27.8
6H	28.9	29.5	29.4	29.9	30.4	26.7	27.3	27.2	27.7	28.2
8H	29.4	29.9	29.9	30.4	30.9	26.9	27.4	27.4	27.9	28.4
Variations with the observer position at spacings:										
S = 1.0H	+ 0.1 / - 0.2					+ 0.2 / - 0.3				
1.5H	+ 0.2 / - 0.3					+ 0.3 / - 0.4				
2.0H	+ 0.1 / - 0.3					+ 0.2 / - 0.6				

CIE Pub.117, 342.1 lm Total Lamp Luminous Flux Correct (8log(F/F0) = -3.7)

C Range: 0 - 360DEG
C Interval: 30.0DEG
Test Speed: HIGH
Temperature:25.3DEG
Operators:LPC
Test Date:2021-10-22

γ Range: 0 - 120DEG
γ Interval: 1.0DEG
Test System:EVERFINE GO-2000B_V1 SYSTEM V2.0.362
Humidity:65.0%
Test Distance:9.200m [K=1.0000]
Remarks:

UTILIZATION FACTORS TABLE

Test:U:24.00V I:0.3184A P:7.642W PF:1.000 Freq:50.00Hz Lamp Flux:4.88725x70 lm		
NAME: P01-24V-5050-70-DMX-RGBW(4000K)-W	TYPE:	WEIGHT:
SPEC.:	DIM.:	SERIAL No.:
MFR.: OLYMPIA	SUR.:1*0.014	Shielding Angle:

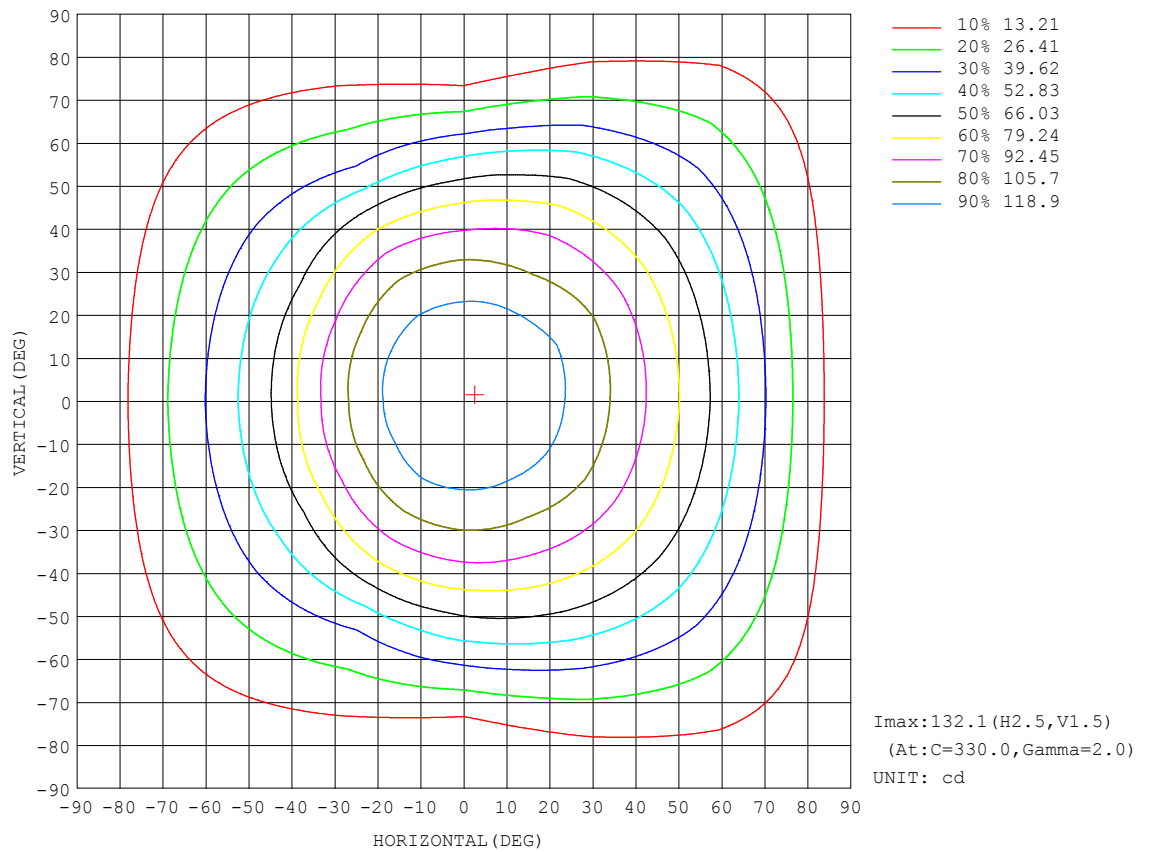
REFLECTANCE										
Ceiling	0.8	0.8	0.8	0.7	0.7	0.7	0.5	0.5	0.5	0
Walls	0.7	0.5	0.3	0.7	0.5	0.3	0.7	0.5	0.3	0
Working plane	0.2	0.2	0.2	0.2	0.2	0.2	0.2	0.2	0.2	0
ROOM INDEX	UTILIZATION FACTORS (PERCENT) $k(RI) \times RCR = 5$									
$k = 0.60$	59	48	41	58	47	41	57	47	41	34
0.80	69	58	50	68	57	50	66	56	50	43
1.00	77	66	59	76	66	59	74	67	58	51
1.25	84	74	67	83	73	67	80	72	66	59
1.50	89	79	73	87	78	72	84	77	71	63
2.00	96	87	81	94	86	80	90	84	79	71
2.50	99	92	86	97	90	85	93	87	83	74
3.00	102	96	90	100	94	89	96	91	87	78
4.00	106	101	96	104	99	95	99	95	92	83
5.00	109	104	100	106	102	98	101	98	95	85
ROOM INDEX	UF(total)									Direct
According to DIN EN 13032-2 2004			Suspended					SHRNOM = 1.25		

C Range: 0 - 360DEG
C Interval: 30.0DEG
Test Speed: HIGH
Temperature:25.3DEG
Operators:LPC
Test Date:2021-10-22

γ Range: 0 - 120DEG
 γ Interval: 1.0DEG
Test System:EVERFINE GO-2000B_V1 SYSTEM V2.0.362
Humidity:65.0%
Test Distance:9.200m [K=1.0000]
Remarks:

ISOCANDELA DIAGRAM

Test:U:24.00V I:0.3184A P:7.642W PF:1.000 Freq:50.00Hz Lamp Flux:4.88725x70 lm		
NAME: P01-24V-5050-70-DMX-RGBW(4000K)-W	TYPE:	WEIGHT:
SPEC.:	DIM.:	SERIAL No.:
MFR.: OLYMPIA	SUR.:1*0.014	Shielding Angle:

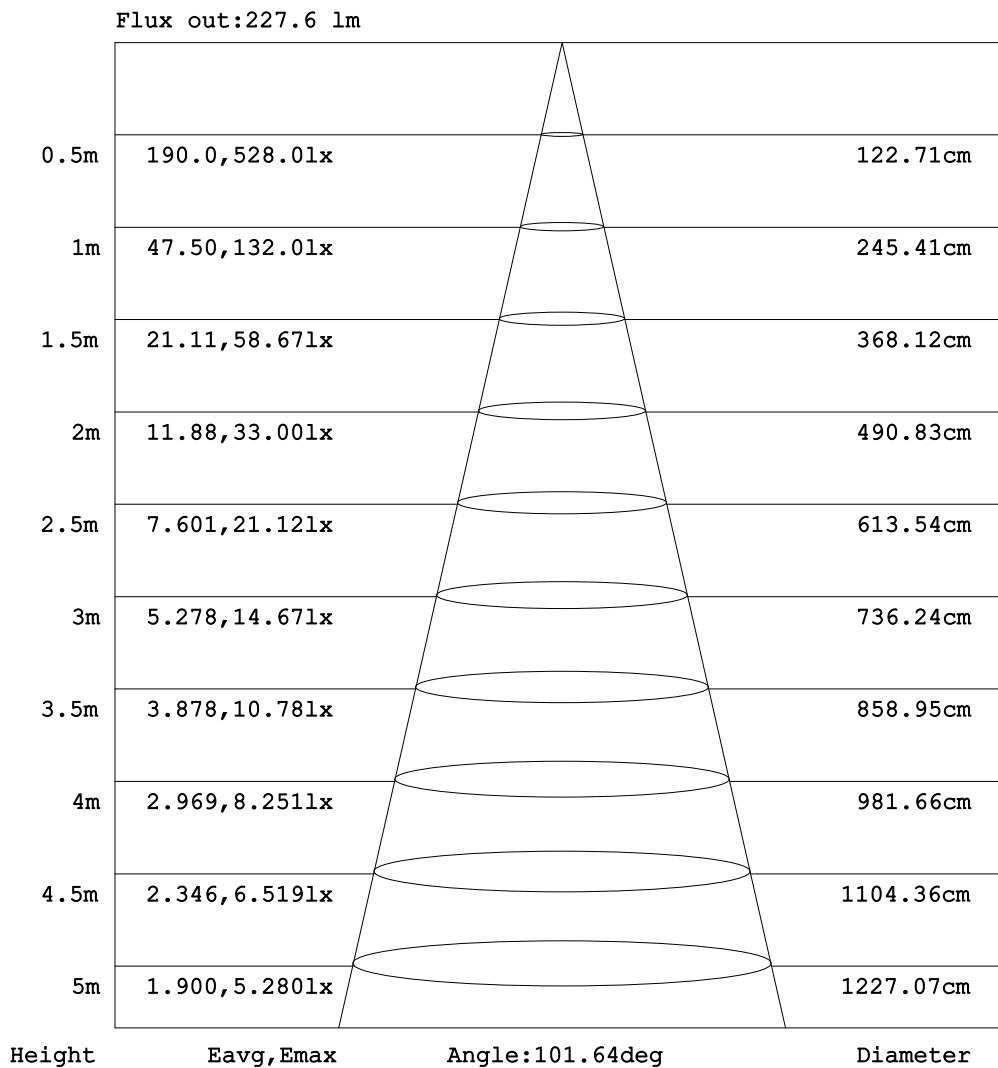


C Range: 0 - 360DEG
C Interval: 30.0DEG
Test Speed: HIGH
Temperature:25.3DEG
Operators:LPC
Test Date:2021-10-22

γ Range: 0 - 120DEG
γ Interval: 1.0DEG
Test System:EVERFINE GO-2000B_V1 SYSTEM V2.0.362
Humidity:65.0%
Test Distance:9.200m [K=1.0000]
Remarks:

AAI Figure

Test:U:24.00V I:0.3184A P:7.642W PF:1.000 Freq:50.00Hz Lamp Flux:4.88725x70 lm		
NAME: P01-24V-5050-70-DMX-RGBW(4000K)-W	TYPE:	WEIGHT:
SPEC.:	DIM.:	SERIAL No.:
MFR.: OLYMPIA	SUR.:1*0.014	Shielding Angle:



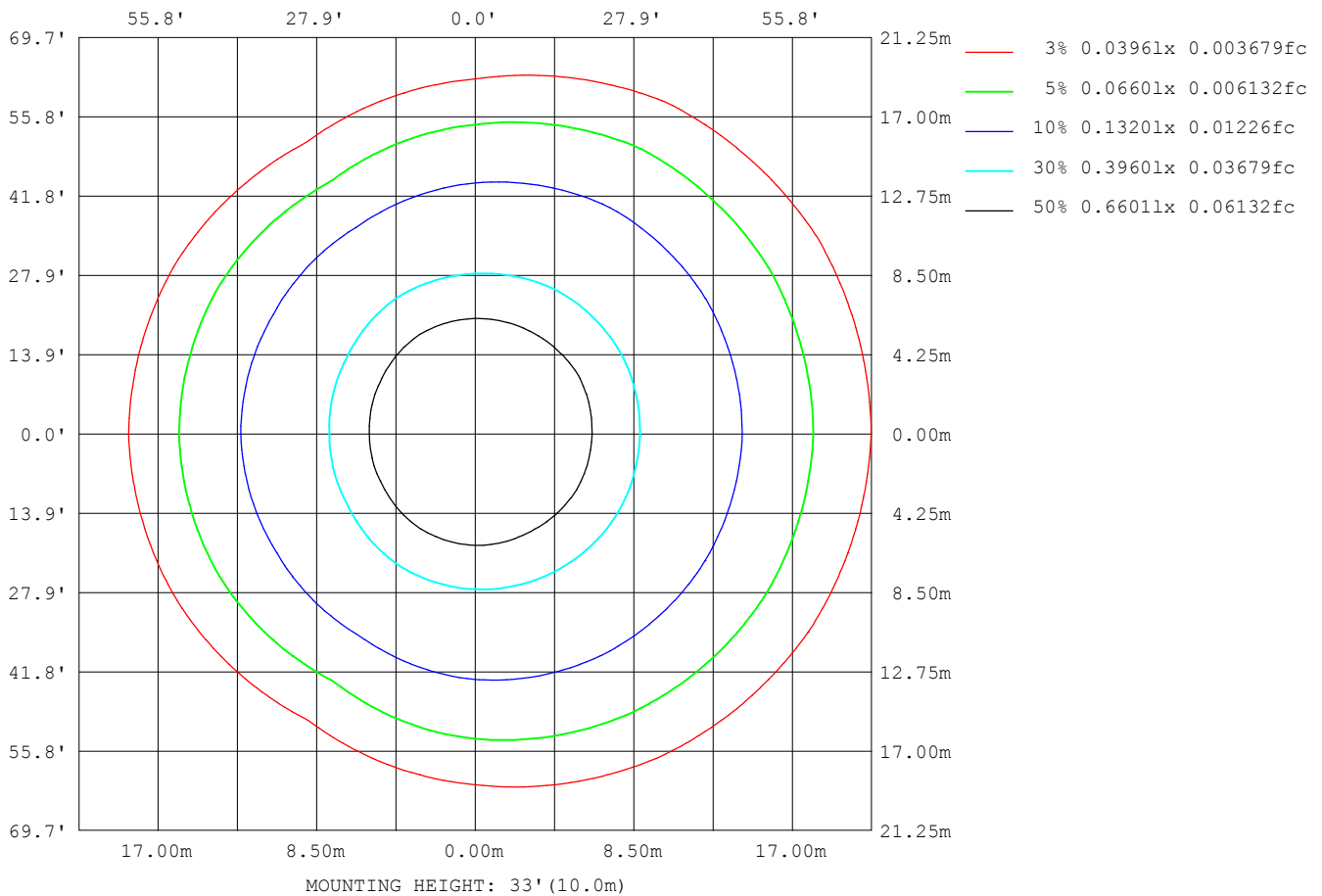
Note:The Curves indicate the illuminated area and the average illumination when the luminaire is at different distance.

C Range: 0 - 360DEG
C Interval: 30.0DEG
Test Speed: HIGH
Temperature:25.3DEG
Operators:LPC
Test Date:2021-10-22

γ Range: 0 - 120DEG
γ Interval: 1.0DEG
Test System:EVERFINE GO-2000B_V1 SYSTEM V2.0.362
Humidity:65.0%
Test Distance:9.200m [K=1.0000]
Remarks:

ISOLUX DIAGRAM

Test:U:24.00V I:0.3184A P:7.642W PF:1.000 Freq:50.00Hz Lamp Flux:4.88725x70 lm		
NAME: P01-24V-5050-70-DMX-RGBW(4000K)-W	TYPE:	WEIGHT:
SPEC.:	DIM.:	SERIAL No.:
MFR.: OLYMPIA	SUR.:1*0.014	Shielding Angle:



C Range: 0 - 360DEG
 C Interval: 30.0DEG
 Test Speed: HIGH
 Temperature:25.3DEG
 Operators:LPC
 Test Date:2021-10-22

γ Range: 0 - 120DEG
 γ Interval: 1.0DEG
 Test System:EVERFINE GO-2000B_V1 SYSTEM V2.0.362
 Humidity:65.0%
 Test Distance:9.200m [K=1.0000]
 Remarks:

LED Avg.L Report

Test:U:24.00V I:0.3184A P:7.642W PF:1.000 Freq:50.00Hz Lamp Flux:4.88725x70 lm		
NAME: P01-24V-5050-70-DMX-RGBW(4000K)-W	TYPE:	WEIGHT:
SPEC.:	DIM.:	SERIAL No.:
MFR.: OLYMPIA	SUR.:1*0.014	Shielding Angle:

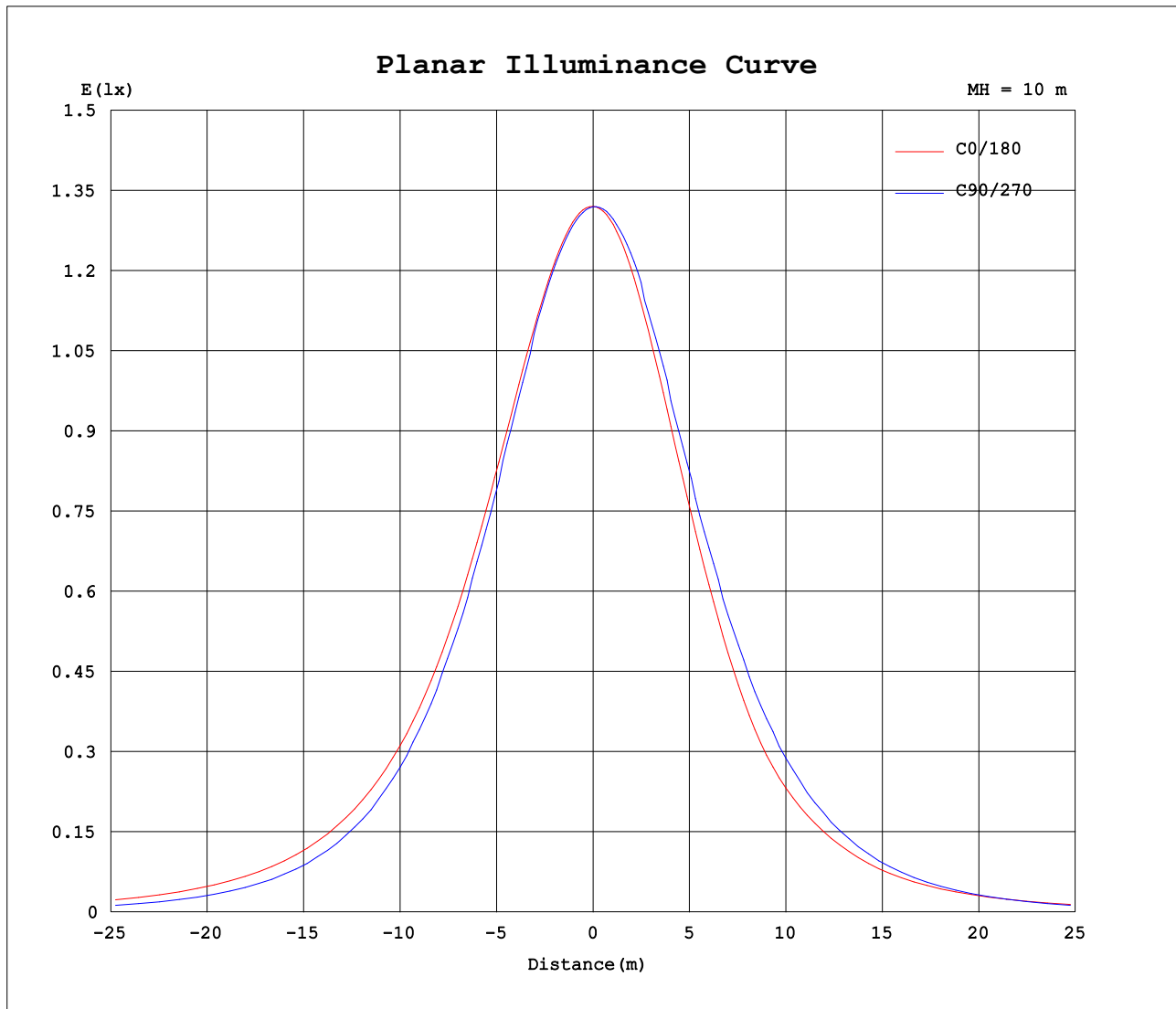
AvgL	cd/m2
L_0~180 (65) av	6997
L_0~180 (75) av	6495
L_0~180 (85) av	6804
L_90~270 (65) av	5334
L_90~270 (75) av	2830
L_90~270 (85) av	1038
L_45 (65) av	6342
L_45 (75) av	5621
L_45 (85) av	5439

Standard: GB/T 29293-2012

C Range: 0 - 360DEG
C Interval: 30.0DEG
Test Speed: HIGH
Temperature:25.3DEG
Operators:LPC
Test Date:2021-10-22

γ Range: 0 - 120DEG
γ Interval: 1.0DEG
Test System:EVERFINE GO-2000B_V1 SYSTEM V2.0.362
Humidity:65.0%
Test Distance:9.200m [K=1.0000]
Remarks:

Planar Illuminance Curve



C Range: 0 - 360DEG
C Interval: 30.0DEG
Test Speed: HIGH
Temperature: 25.3DEG
Operators: LPC
Test Date: 2021-10-22

γ Range: 0 - 120DEG
 γ Interval: 1.0DEG
Test System: EVERFINE GO-2000B_V1 SYSTEM V2.0.362
Humidity: 65.0%
Test Distance: 9.200m [K=1.0000]
Remarks:

LUMINOUS DISTRIBUTION INTENSITY DATA

Test:U:24.00V I:0.3184A P:7.642W PF:1.000 Freq:50.00Hz Lamp Flux:4.88725x70 lm		
NAME: P01-24V-5050-70-DMX-RGBW(4000K)-W	TYPE:	WEIGHT:
SPEC.:	DIM.:	SERIAL No.:
MFR.: OLYMPIA	SUR.:1*0.014	Shielding Angle:

Table--1

UNIT: cd

C (DEG) γ (DEG)	0	30	60	90	120	150	180	210	240	270	300	330							
0	132	132	132	132	132	132	132	132	132	132	132	132							
5	131	131	131	131	131	131	131	131	132	132	132	132							
10	129	129	129	129	128	128	128	129	130	131	131	130							
15	126	126	126	125	124	123	124	125	127	127	128	127							
20	122	122	121	119	119	117	117	119	122	123	123	124							
25	117	116	114	114	112	109	109	112	116	117	117	119							
30	111	110	106	106	104	99.7	99.3	103	108	110	111	113							
35	104	103	98.8	96.5	94.0	88.8	88.2	92.1	99.5	101	104	106							
40	96.3	94.5	90.5	86.8	83.2	76.5	76.0	79.8	88.8	91.8	96.8	98.4							
45	88.1	85.7	81.5	76.6	71.1	64.3	65.7	67.3	76.4	81.5	88.0	89.4							
50	79.4	76.5	71.8	65.9	57.6	55.2	57.3	57.3	62.3	70.5	78.2	80.1							
55	70.3	67.0	61.5	54.9	44.1	46.7	48.4	48.5	47.6	57.8	67.5	70.5							
60	60.7	57.3	51.1	43.1	34.5	38.2	39.9	39.3	36.6	45.0	56.3	60.3							
65	50.7	47.3	40.5	31.2	27.1	30.2	32.1	31.0	28.4	31.9	44.8	50.1							
70	40.1	37.3	30.2	19.9	20.1	22.7	24.8	23.1	20.8	20.1	33.4	39.8							
75	29.5	27.6	20.8	10.4	13.5	15.8	17.6	15.9	13.8	10.1	22.8	29.7							
80	19.6	18.3	12.6	4.68	7.94	9.57	10.7	9.41	7.98	3.46	13.7	20.0							
85	11.5	10.5	6.22	1.67	3.86	4.80	5.11	4.26	3.58	0.86	6.63	11.6							
90	5.77	5.09	2.62	1.17	2.12	2.26	1.77	1.66	1.47	0.56	2.41	5.47							
95	2.61	2.42	1.92	1.25	1.99	1.91	1.04	1.24	1.31	0.62	1.33	2.21							
100	1.52	1.77	1.91	1.37	2.01	1.95	1.11	1.26	1.32	0.79	1.32	1.29							
105	1.50	1.81	1.72	1.57	1.85	2.05	1.21	1.34	1.25	0.94	1.18	1.27							
110	1.52	1.86	1.95	1.58	2.05	2.11	1.31	1.42	1.48	0.94	1.36	1.30							
115	1.59	1.92	2.07	1.64	2.16	2.15	1.41	1.50	1.58	1.07	1.40	1.33							
120	1.67	1.94	1.86	1.73	2.22	2.21	1.46	1.58	1.60	1.17	1.25	1.33							
125	0.00	0.00	0.00	0.00	0.00	0.00	0.00	0.00	0.00	0.00	0.00	0.00							
130	0.00	0.00	0.00	0.00	0.00	0.00	0.00	0.00	0.00	0.00	0.00	0.00							
135	0.00	0.00	0.00	0.00	0.00	0.00	0.00	0.00	0.00	0.00	0.00	0.00							
140	0.00	0.00	0.00	0.00	0.00	0.00	0.00	0.00	0.00	0.00	0.00	0.00							
145	0.00	0.00	0.00	0.00	0.00	0.00	0.00	0.00	0.00	0.00	0.00	0.00							
150	0.00	0.00	0.00	0.00	0.00	0.00	0.00	0.00	0.00	0.00	0.00	0.00							
155	0.00	0.00	0.00	0.00	0.00	0.00	0.00	0.00	0.00	0.00	0.00	0.00							
160	0.00	0.00	0.00	0.00	0.00	0.00	0.00	0.00	0.00	0.00	0.00	0.00							
165	0.00	0.00	0.00	0.00	0.00	0.00	0.00	0.00	0.00	0.00	0.00	0.00							
170	0.00	0.00	0.00	0.00	0.00	0.00	0.00	0.00	0.00	0.00	0.00	0.00							
175	0.00	0.00	0.00	0.00	0.00	0.00	0.00	0.00	0.00	0.00	0.00	0.00							
180	0.00	0.00	0.00	0.00	0.00	0.00	0.00	0.00	0.00	0.00	0.00	0.00							

C Range: 0 - 360DEG
C Interval: 30.0DEG
Test Speed: HIGH
Temperature:25.3DEG
Operators:LPC
Test Date:2021-10-22

γ Range: 0 - 120DEG
γ Interval: 1.0DEG
Test System:EVERFINE GO-2000B_V1 SYSTEM V2.0.362
Humidity:65.0%
Test Distance:9.200m [K=1.0000]
Remarks: