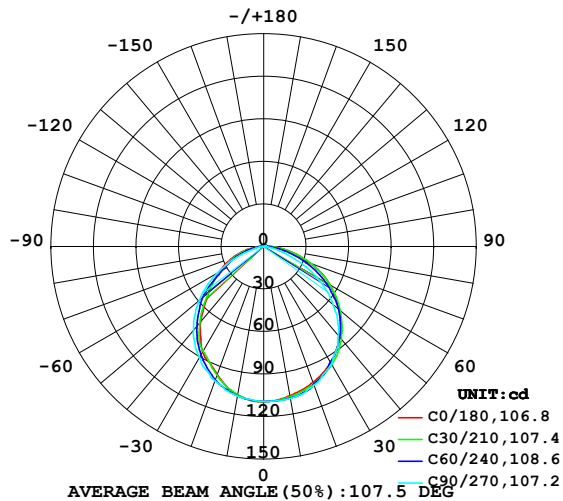


LUMINAIRE PHOTOMETRIC TEST REPORT

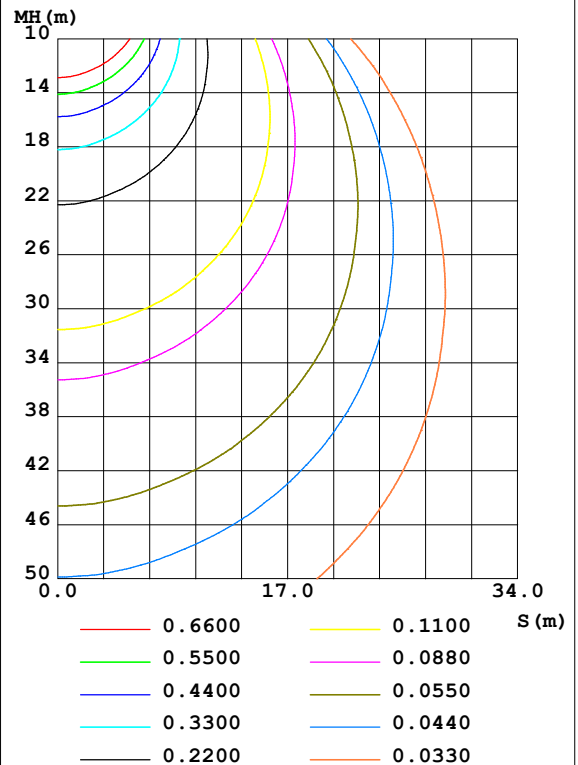
Test:U:24.00V I:0.3198A P:7.675W PF:1.000 Freq:50.00Hz Lamp Flux:4.3184x70 lm		
NAME: P01-24V-5050-70-DMX-RGBW(4000K)-G	TYPE:	WEIGHT:
SPEC.:	DIM.:	SERIAL No.:
MFR.: OLYMPIA	SUR.:1*0.014	Shielding Angle:

DATA OF LAMP		PHOTOMETRIC DATA Eff: 39.39 lm/W			
MODEL	5050	I _{max} (cd)	109.5	S/MH (C0/180)	1.18
NOMINAL POWER (W)	12	LOR (%)	100.0	S/MH (C90/270)	1.24
RATED VOLTAGE (V)	24	TOTAL FLUX (lm)	302.29	η UP, DN (C0-180)	0.9, 50.9
NOMINAL FLUX (lm)	4.3184	CIE CLASS	DIRECT	η UP, DN (C180-360)	0.6, 47.6
LAMPS INSIDE	70	η up (%)	1.5	CIBSE SHR NOM	1.25
TEST VOLTAGE (V)	24	η down (%)	98.5	CIBSE SHR MAX	1.35

LUMINOUS INTENSITY DISTRIBUTION DIAGRAM



C0 PLANE ISOLUX DIAGRAM (UNIT:lx)



C Range: 0 - 360DEG
 C Interval: 30.0DEG
 Test Speed: HIGH
 Temperature: 25.3DEG
 Operators: LPC
 Test Date: 2021-10-22

γ Range: 0 - 120DEG
 γ Interval: 1.0DEG
 Test System: EVERFINE GO-2000B_V1 SYSTEM V2.0.362
 Humidity: 65.0%
 Test Distance: 9.200m [K=1.0000]
 Remarks:

ZONAL FLUX DIAGRAM

ZONAL FLUX DIAGRAM:

γ	C0	C45	C90	C135	C180	C225	C270	C315	γ	Φ zone	Φ total	%lum, lamp
10	106.9	108.2	108.9	107.5	106.5	106.5	107.1	106.9	0- 10	10.34	10.34	3.42,3.42
20	102.0	103.3	104.1	100.6	96.04	98.45	100.8	101.0	10- 20	29.51	39.85	13.2,13.2
30	94.52	95.26	95.71	89.47	86.17	86.87	90.46	93.05	20- 30	44.38	84.23	27.9,27.9
40	83.23	84.40	82.00	73.56	69.15	71.76	76.89	82.31	30- 40	53.27	137.5	45.5,45.5
50	69.35	69.74	64.10	55.29	50.88	53.60	59.37	68.23	40- 50	53.90	191.4	63.3,63.3
60	53.94	52.11	43.25	35.97	36.54	34.61	38.18	51.13	50- 60	46.86	238.3	78.8,78.8
70	35.31	33.02	19.25	21.58	23.44	20.59	16.25	32.68	60- 70	34.17	272.4	90.1,90.1
80	17.58	14.77	4.339	8.865	10.49	8.197	3.092	14.92	70- 80	18.88	291.3	96.4,96.4
90	5.009	3.555	1.000	1.970	1.786	1.493	0.5177	3.409	80- 90	6.356	297.7	98.5,98.5
100	1.337	1.578	1.172	1.666	0.9651	1.211	0.7281	1.216	90-100	1.724	299.4	99,99
110	1.357	1.618	1.357	1.754	1.131	1.339	0.8745	1.234	100-110	1.396	300.8	99.5,99.5
120	1.498	1.618	1.493	1.857	1.246	1.457	1.045	1.166	110-120	1.430	302.2	100,100
130	0	0	0	0	0	0	0	0	120-130	0.0688	302.3	100,100
140	0	0	0	0	0	0	0	0	130-140	0	302.3	100,100
150	0	0	0	0	0	0	0	0	140-150	0	302.3	100,100
160	0	0	0	0	0	0	0	0	150-160	0	302.3	100,100
170	0	0	0	0	0	0	0	0	160-170	0	302.3	100,100
180	0	0	0	0	0	0	0	0	170-180	0	302.3	100,100
DEG	LUMINOUS INTENSITY:cd									UNIT:lm		

Conical surface Flux(90deg): 164.88 lm

%lum = 54.5%

%lamp = 54.5%

Conical surface Flux(120deg): 238.26 lm

%lum = 78.8%

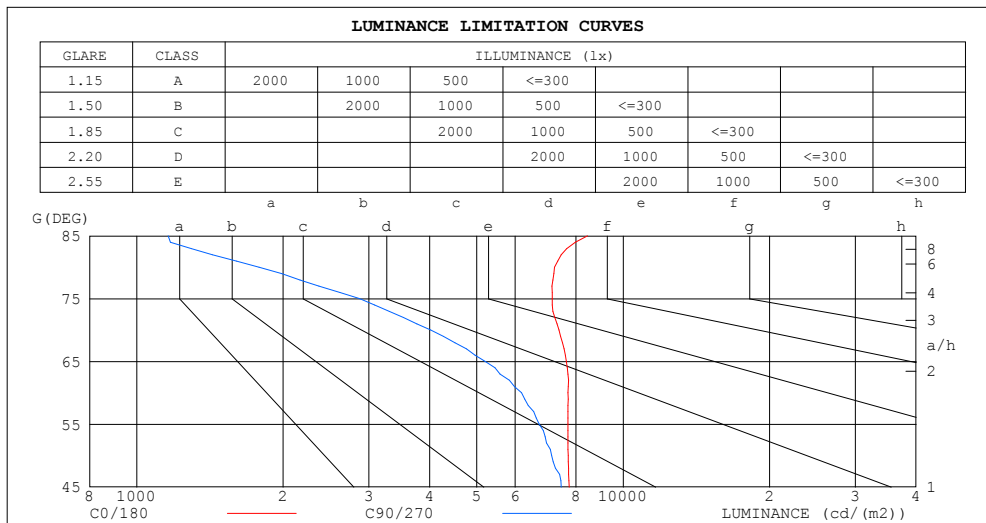
%lamp = 78.8%

C Range: 0 - 360DEG
 C Interval: 30.0DEG
 Test Speed: HIGH
 Temperature:25.3DEG
 Operators:LPC
 Test Date:2021-10-22

γ Range: 0 - 120DEG
 γ Interval: 1.0DEG
 Test System:EVERFINE GO-2000B_V1 SYSTEM V2.0.362
 Humidity:65.0%
 Test Distance:9.200m [K=1.0000]
 Remarks:

LUMINANCE LIMITATION CURVES

Test:U:24.00V I:0.3198A P:7.675W PF:1.000 Freq:50.00Hz Lamp Flux:4.3184x70 lm		
NAME: P01-24V-5050-70-DMX-RGBW(4000K)-G	TYPE:	WEIGHT:
SPEC.:	DIM.:	SERIAL No.:
MFR.: OLYMPIA	SUR.:1*0.014	Shielding Angle:



LUMINANCE cd/(m2)		
G (DEG)	C0/180	C90/270
85	8444	1160
80	7230	1785
75	7144	2873
70	7375	4020
65	7641	5203
60	7705	6179
55	7702	6723
50	7706	7123
45	7741	7455

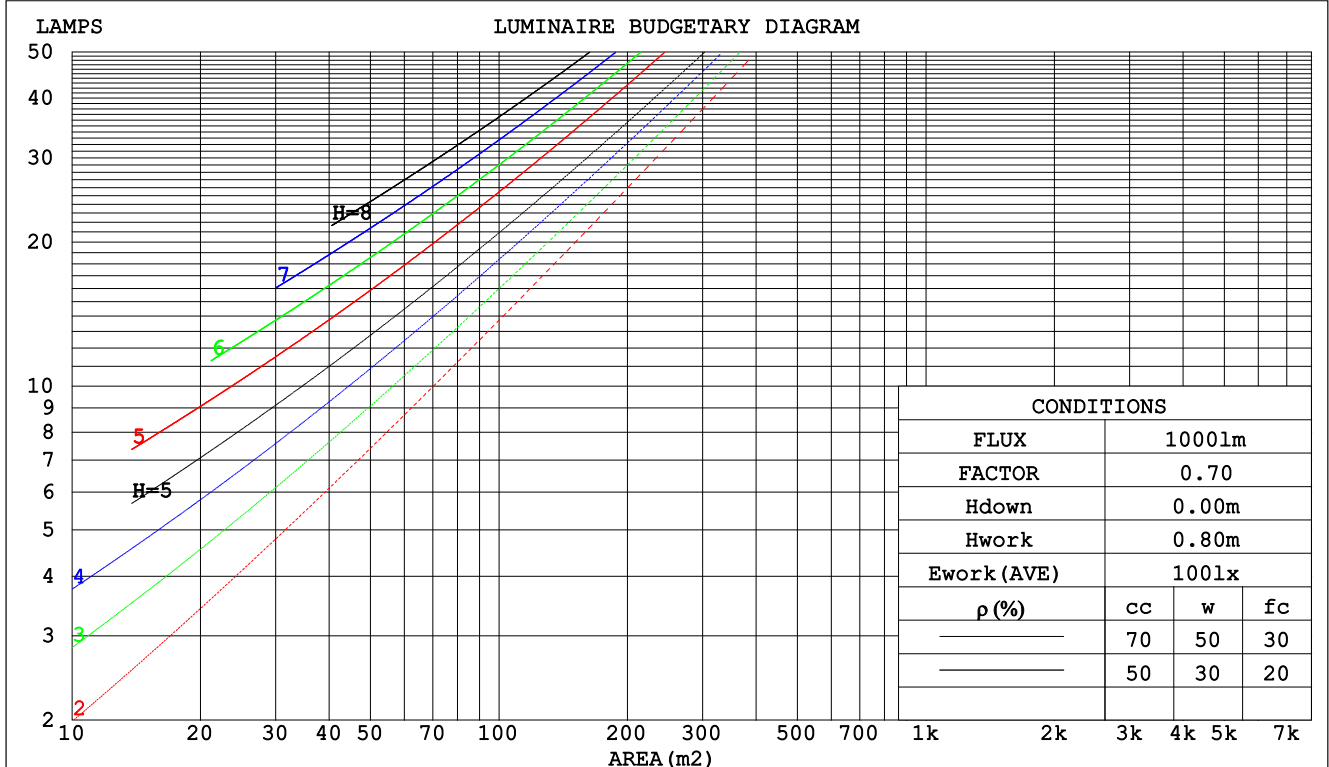
C Range: 0 - 360DEG
C Interval: 30.0DEG
Test Speed: HIGH
Temperature:25.3DEG
Operators:LPC
Test Date:2021-10-22

γ Range: 0 - 120DEG
 γ Interval: 1.0DEG
Test System:EVERFINE GO-2000B_V1 SYSTEM V2.0.362
Humidity:65.0%
Test Distance:9.200m [K=1.0000]
Remarks:

CU AND LUMINAIRE BUDGETARY ESTIMATE DIAGRAM

Test:U:24.00V I:0.3198A P:7.675W PF:1.000 Freq:50.00Hz Lamp Flux:4.3184x70 lm		
NAME: P01-24V-5050-70-DMX-RGBW(4000K)-G	TYPE:	WEIGHT:
SPEC.:	DIM.:	SERIAL No.:
MFR.: OLYMPIA	SUR.:1*0.014	Shielding Angle:

pcc	80%			70%			50%			30%			10%			0
pw	50%	30%	10%	50%	30%	10%	50%	30%	10%	50%	30%	10%	50%	30%	10%	0
pfc	20%			20%			20%			20%			20%			0
RCR	RCR:Room Cavity Ratio			Coefficients of Utilization(CU)												
0.0	1.19	1.19	1.19	1.16	1.16	1.16	1.10	1.10	1.10	1.05	1.05	1.05	1.01	1.01	1.01	.98
1.0	1.04	.99	.96	1.01	.97	.94	.97	.94	.91	.93	.90	.88	.89	.87	.85	.83
2.0	.91	.84	.78	.89	.82	.77	.85	.80	.75	.81	.77	.73	.78	.75	.71	.69
3.0	.80	.72	.65	.78	.71	.65	.75	.68	.63	.72	.66	.62	.69	.65	.61	.58
4.0	.71	.62	.55	.69	.61	.55	.67	.60	.54	.64	.58	.53	.62	.57	.52	.50
5.0	.63	.54	.48	.62	.54	.47	.60	.52	.47	.58	.51	.46	.56	.50	.46	.43
6.0	.57	.48	.42	.56	.48	.42	.54	.47	.41	.52	.46	.41	.50	.45	.40	.38
7.0	.52	.43	.37	.51	.43	.37	.49	.42	.36	.48	.41	.36	.46	.40	.36	.34
8.0	.47	.39	.33	.46	.38	.33	.45	.38	.33	.44	.37	.32	.42	.36	.32	.30
9.0	.43	.35	.30	.43	.35	.30	.41	.34	.29	.40	.34	.29	.39	.33	.29	.27
10.0	.40	.32	.27	.39	.32	.27	.38	.31	.27	.37	.31	.26	.36	.30	.26	.24



C Range: 0 - 360DEG
 C Interval: 30.0DEG
 Test Speed: HIGH
 Temperature:25.3DEG
 Operators:LPC
 Test Date:2021-10-22

γ Range: 0 - 120DEG
 γ Interval: 1.0DEG
 Test System:EVERFINE GO-2000B_V1 SYSTEM V2.0.362
 Humidity:65.0%
 Test Distance:9.200m [K=1.0000]
 Remarks:

WEC AND CCEC

Test:U:24.00V I:0.3198A P:7.675W PF:1.000 Freq:50.00Hz Lamp Flux:4.3184x70 lm		
NAME: P01-24V-5050-70-DMX-RGBW(4000K)-G	TYPE:	WEIGHT:
SPEC.:	DIM.:	SERIAL No.:
MFR.: OLYMPIA	SUR.:1*0.014	Shielding Angle:

pcc	80%			70%			50%			30%			10%			0	
pw	50%	30%	10%	50%	30%	10%	50%	30%	10%	50%	30%	10%	50%	30%	10%	0	
pfc	20%			20%			20%			20%			20%			0	
RCR	RCR:Room Cavity Ratio						Wall Exitance Coefficients(WEC)										
0.0																	
1.0	.305	.174	.055	.298	.170	.054	.284	.163	.052	.271	.156	.050	.259	.150	.048		
2.0	.286	.157	.048	.280	.154	.047	.267	.149	.046	.256	.144	.045	.245	.139	.044		
3.0	.265	.141	.042	.259	.139	.042	.248	.135	.041	.238	.130	.040	.229	.127	.039		
4.0	.245	.127	.037	.240	.126	.037	.230	.122	.036	.221	.119	.036	.212	.115	.035		
5.0	.227	.116	.033	.222	.114	.033	.213	.111	.033	.205	.108	.032	.198	.106	.032		
6.0	.211	.106	.030	.207	.104	.030	.199	.102	.030	.191	.099	.029	.185	.097	.029		
7.0	.196	.097	.028	.193	.096	.027	.186	.094	.027	.179	.092	.027	.173	.090	.026		
8.0	.184	.090	.025	.180	.089	.025	.174	.087	.025	.168	.085	.025	.162	.083	.024		
9.0	.172	.083	.023	.169	.082	.023	.163	.081	.023	.158	.079	.023	.153	.078	.022		
10.0	.162	.078	.022	.159	.077	.021	.154	.075	.021	.149	.074	.021	.145	.073	.021		

pcc	80%			70%			50%			30%			10%			0
pw	50%	30%	10%	50%	30%	10%	50%	30%	10%	50%	30%	10%	50%	30%	10%	0
pfc	20%			20%			20%			20%			20%			0
RCR	RCR:Room Cavity Ratio						Ceiling Cavity Exitance Coefficients(CCEC)									
0.0	.202	.202	.202	.173	.173	.173	.118	.118	.118	.068	.068	.068	.022	.022	.022	
1.0	.192	.168	.146	.164	.144	.126	.112	.099	.087	.065	.057	.051	.021	.018	.016	
2.0	.183	.144	.110	.157	.124	.095	.108	.086	.067	.062	.050	.039	.020	.016	.013	
3.0	.175	.126	.087	.150	.109	.075	.103	.076	.053	.060	.044	.031	.019	.014	.010	
4.0	.168	.113	.071	.144	.097	.062	.099	.068	.043	.057	.040	.026	.018	.013	.008	
5.0	.160	.102	.060	.138	.089	.052	.095	.062	.037	.055	.036	.022	.018	.012	.007	
6.0	.153	.094	.052	.132	.081	.045	.091	.057	.032	.053	.034	.019	.017	.011	.006	
7.0	.146	.087	.046	.126	.076	.040	.087	.053	.028	.051	.031	.017	.016	.010	.006	
8.0	.140	.081	.041	.121	.071	.036	.083	.050	.025	.049	.029	.015	.016	.010	.005	
9.0	.134	.076	.038	.116	.066	.033	.080	.047	.023	.047	.028	.014	.015	.009	.005	
10.0	.128	.072	.035	.111	.063	.030	.077	.044	.022	.045	.026	.013	.015	.009	.004	

C Range: 0 - 360DEG
C Interval: 30.0DEG
Test Speed: HIGH
Temperature:25.3DEG
Operators:LPC
Test Date:2021-10-22

γ Range: 0 - 120DEG
γ Interval: 1.0DEG
Test System:EVERFINE GO-2000B_V1 SYSTEM V2.0.362
Humidity:65.0%
Test Distance:9.200m [K=1.0000]
Remarks:

UGR(Unified Glare Rating) Table

Test:U:24.00V I:0.3198A P:7.675W PF:1.000 Freq:50.00Hz Lamp Flux:4.3184x70 lm										
NAME: P01-24V-5050-70-DMX-RGBW(4000K)-G					TYPE:			WEIGHT:		
SPEC.:					DIM.:			SERIAL No.:		
MFR.: OLYMPIA					SUR.:1*0.014			Shielding Angle:		
ceiling/cavity	0.7	0.7	0.5	0.5	0.3	0.7	0.7	0.5	0.5	0.3
walls	0.5	0.3	0.5	0.3	0.3	0.5	0.3	0.5	0.3	0.3
working plane	0.2	0.2	0.2	0.2	0.2	0.2	0.2	0.2	0.2	0.2
Room dimensions	Viewed crosswise					Viewed endwise				
x = 2H y = 2H	24.6	26.1	24.9	26.3	26.5	23.9	25.4	24.2	25.6	25.9
3H	26.3	27.7	26.6	27.9	28.2	25.0	26.3	25.3	26.6	26.8
4H	27.0	28.3	27.3	28.6	28.9	25.2	26.5	25.5	26.8	27.1
6H	27.6	28.8	27.9	29.1	29.4	25.3	26.5	25.6	26.8	27.1
8H	27.8	29.0	28.2	29.3	29.7	25.3	26.4	25.6	26.8	27.1
12H	28.1	29.2	28.4	29.5	29.8	25.2	26.4	25.6	26.7	27.0
4H 2H	25.2	26.5	25.5	26.8	27.1	24.7	26.0	25.0	26.3	26.5
3H	27.1	28.2	27.5	28.6	28.9	26.0	27.1	26.3	27.4	27.8
4H	28.0	29.0	28.4	29.3	29.7	26.4	27.4	26.8	27.7	28.1
6H	28.7	29.6	29.1	30.0	30.4	26.6	27.5	27.0	27.9	28.3
8H	29.0	29.9	29.5	30.3	30.7	26.6	27.4	27.0	27.8	28.3
12H	29.3	30.1	29.8	30.5	30.9	26.6	27.4	27.0	27.8	28.2
8H 4H	28.2	29.1	28.6	29.5	29.9	26.8	27.7	27.2	28.1	28.5
6H	29.1	29.8	29.6	30.3	30.7	27.2	27.9	27.7	28.3	28.8
8H	29.6	30.2	30.1	30.7	31.1	27.3	27.9	27.8	28.4	28.9
12H	30.0	30.5	30.5	31.0	31.5	27.4	27.9	27.9	28.4	28.9
12H 4H	28.2	29.0	28.6	29.4	29.8	26.9	27.7	27.3	28.1	28.5
6H	29.2	29.8	29.7	30.3	30.7	27.3	28.0	27.8	28.4	28.9
8H	29.7	30.2	30.2	30.7	31.2	27.5	28.1	28.0	28.5	29.0
Variations with the observer position at spacings:										
S = 1.0H	+ 0.1 / - 0.2					+ 0.2 / - 0.3				
1.5H	+ 0.2 / - 0.3					+ 0.3 / - 0.4				
2.0H	+ 0.1 / - 0.4					+ 0.2 / - 0.5				

CIE Pub.117, 302.3 lm Total Lamp Luminous Flux Correct (8log(F/F0) = -4.2)

C Range: 0 - 360DEG
C Interval: 30.0DEG
Test Speed: HIGH
Temperature:25.3DEG
Operators:LPC
Test Date:2021-10-22

γ Range: 0 - 120DEG
γ Interval: 1.0DEG
Test System:EVERFINE GO-2000B_V1 SYSTEM V2.0.362
Humidity:65.0%
Test Distance:9.200m [K=1.0000]
Remarks:

UTILIZATION FACTORS TABLE

Test:U:24.00V I:0.3198A P:7.675W PF:1.000 Freq:50.00Hz Lamp Flux:4.3184x70 lm		
NAME: P01-24V-5050-70-DMX-RGBW(4000K)-G	TYPE:	WEIGHT:
SPEC.:	DIM.:	SERIAL No.:
MFR.: OLYMPIA	SUR.:1*0.014	Shielding Angle:

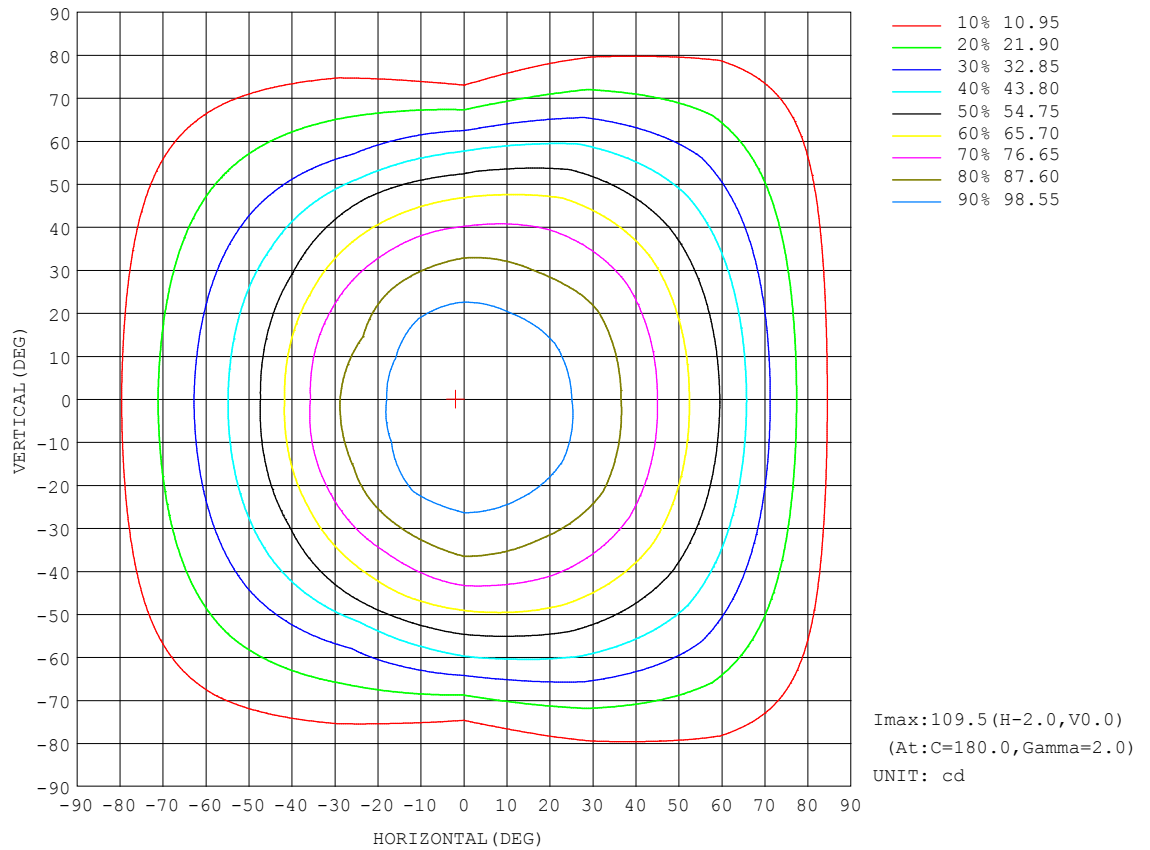
REFLECTANCE										
Ceiling	0.8	0.8	0.8	0.7	0.7	0.7	0.5	0.5	0.5	0
Walls	0.7	0.5	0.3	0.7	0.5	0.3	0.7	0.5	0.3	0
Working plane	0.2	0.2	0.2	0.2	0.2	0.2	0.2	0.2	0.2	0
ROOM INDEX	UTILIZATION FACTORS (PERCENT) k(RI) × RCR = 5									
k = 0.60	58	46	39	57	46	39	56	46	39	33
0.80	68	56	49	67	56	49	65	55	49	42
1.00	76	65	58	75	65	58	73	66	57	50
1.25	83	73	66	82	72	65	79	71	65	57
1.50	88	78	71	86	77	71	83	76	70	62
2.00	95	86	80	93	85	79	89	83	78	70
2.50	99	91	85	97	90	84	93	87	82	74
3.00	102	95	90	100	94	89	96	90	86	78
4.00	106	100	96	103	98	94	99	95	91	82
5.00	108	104	99	106	101	98	101	98	95	85
ROOM INDEX	UF (total)									Direct
According to DIN EN 13032-2 2004										
Suspended										
SHRNM = 1.25										

C Range: 0 - 360DEG
C Interval: 30.0DEG
Test Speed: HIGH
Temperature:25.3DEG
Operators:LPC
Test Date:2021-10-22

γ Range: 0 - 120DEG
 γ Interval: 1.0DEG
Test System:EVERFINE GO-2000B_V1 SYSTEM V2.0.362
Humidity:65.0%
Test Distance:9.200m [K=1.0000]
Remarks:

ISOCANDELA DIAGRAM

Test:U:24.00V I:0.3198A P:7.675W PF:1.000 Freq:50.00Hz Lamp Flux:4.3184x70 lm		
NAME: P01-24V-5050-70-DMX-RGBW(4000K)-G	TYPE:	WEIGHT:
SPEC.:	DIM.:	SERIAL No.:
MFR.: OLYMPIA	SUR.:1*0.014	Shielding Angle:

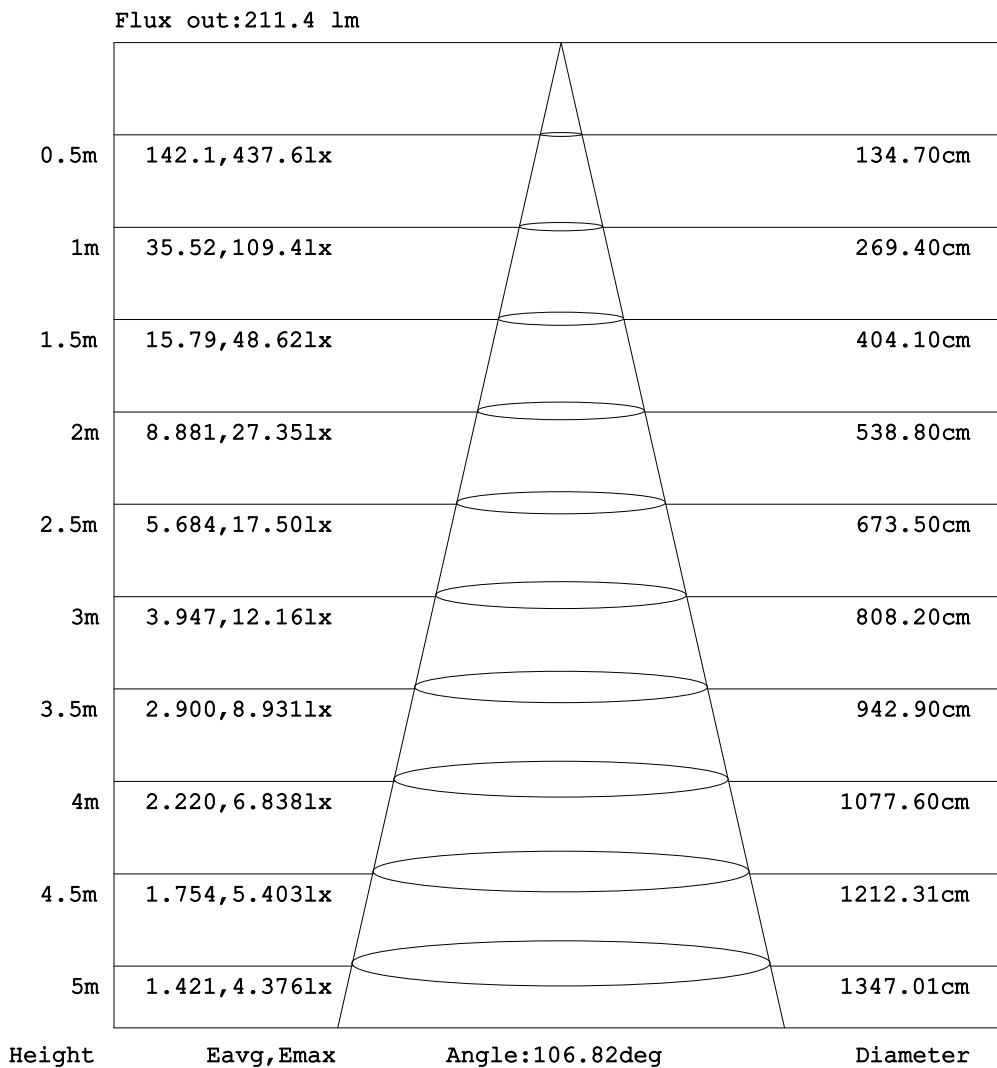


C Range: 0 - 360DEG
C Interval: 30.0DEG
Test Speed: HIGH
Temperature:25.3DEG
Operators:LPC
Test Date:2021-10-22

γ Range: 0 - 120DEG
 γ Interval: 1.0DEG
Test System:EVERFINE GO-2000B_V1 SYSTEM V2.0.362
Humidity:65.0%
Test Distance:9.200m [K=1.0000]
Remarks:

AAI Figure

Test:U:24.00V I:0.3198A P:7.675W PF:1.000 Freq:50.00Hz Lamp Flux:4.3184x70 lm		
NAME: P01-24V-5050-70-DMX-RGBW(4000K)-G	TYPE:	WEIGHT:
SPEC.:	DIM.:	SERIAL No.:
MFR.: OLYMPIA	SUR.:1*0.014	Shielding Angle:



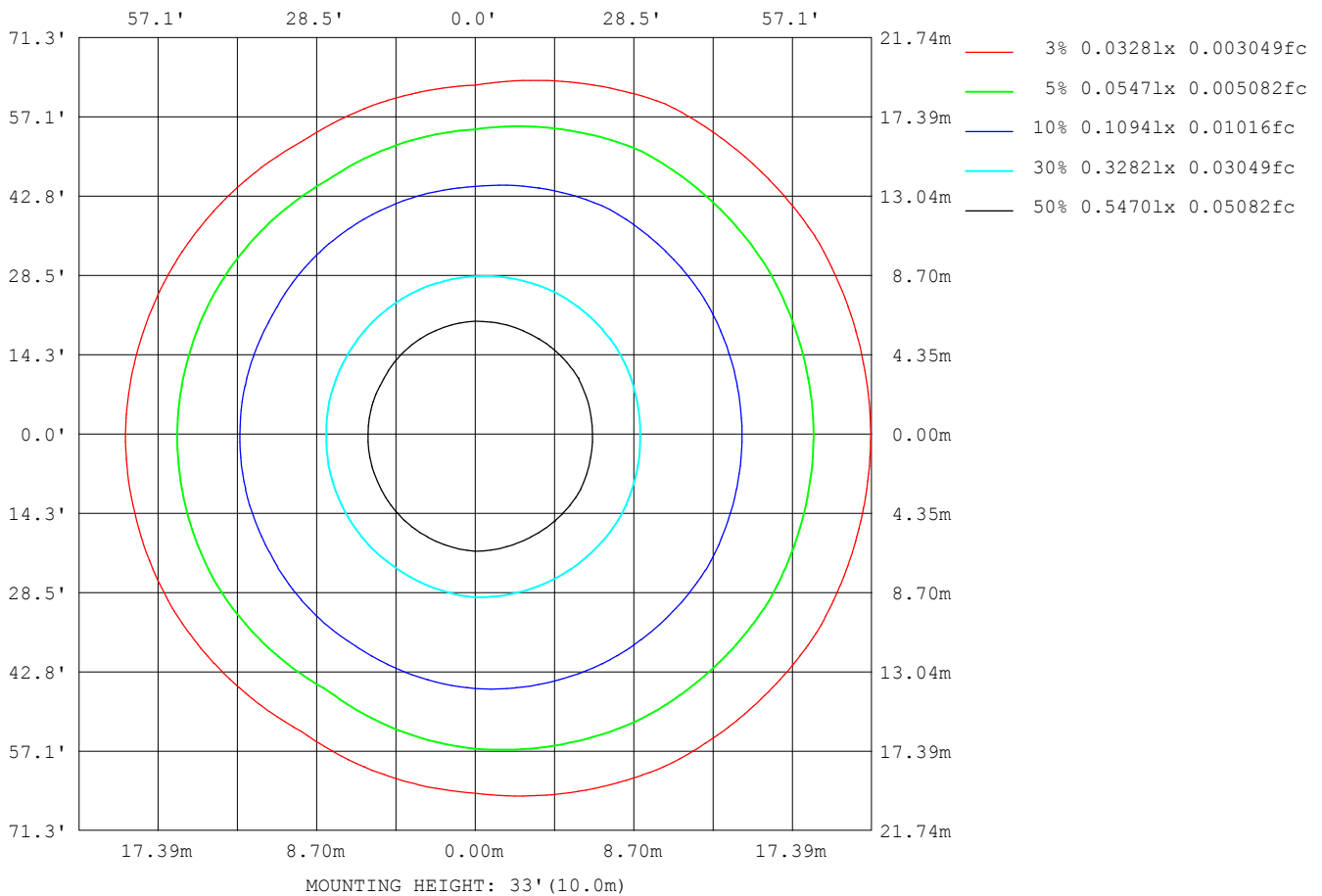
Note: The Curves indicate the illuminated area and the average illumination when the luminaire is at different distance.

C Range: 0 - 360DEG
C Interval: 30.0DEG
Test Speed: HIGH
Temperature: 25.3DEG
Operators: LPC
Test Date: 2021-10-22

γ Range: 0 - 120DEG
γ Interval: 1.0DEG
Test System: EVERFINE GO-2000B_V1 SYSTEM V2.0.362
Humidity: 65.0%
Test Distance: 9.200m [K=1.0000]
Remarks:

ISOLUX DIAGRAM

Test:U:24.00V I:0.3198A P:7.675W PF:1.000 Freq:50.00Hz Lamp Flux:4.3184x70 lm		
NAME: P01-24V-5050-70-DMX-RGBW(4000K)-G	TYPE:	WEIGHT:
SPEC.:	DIM.:	SERIAL No.:
MFR.: OLYMPIA	SUR.:1*0.014	Shielding Angle:



C Range: 0 - 360DEG
 C Interval: 30.0DEG
 Test Speed: HIGH
 Temperature:25.3DEG
 Operators:LPC
 Test Date:2021-10-22

γ Range: 0 - 120DEG
 γ Interval: 1.0DEG
 Test System:EVERFINE GO-2000B_V1 SYSTEM V2.0.362
 Humidity:65.0%
 Test Distance:9.200m [K=1.0000]
 Remarks:

LED Avg.L Report

Test:U:24.00V I:0.3198A P:7.675W PF:1.000 Freq:50.00Hz Lamp Flux:4.3184x70 lm		
NAME: P01-24V-5050-70-DMX-RGBW(4000K)-G	TYPE:	WEIGHT:
SPEC.:	DIM.:	SERIAL No.:
MFR.: OLYMPIA	SUR.:1*0.014	Shielding Angle:

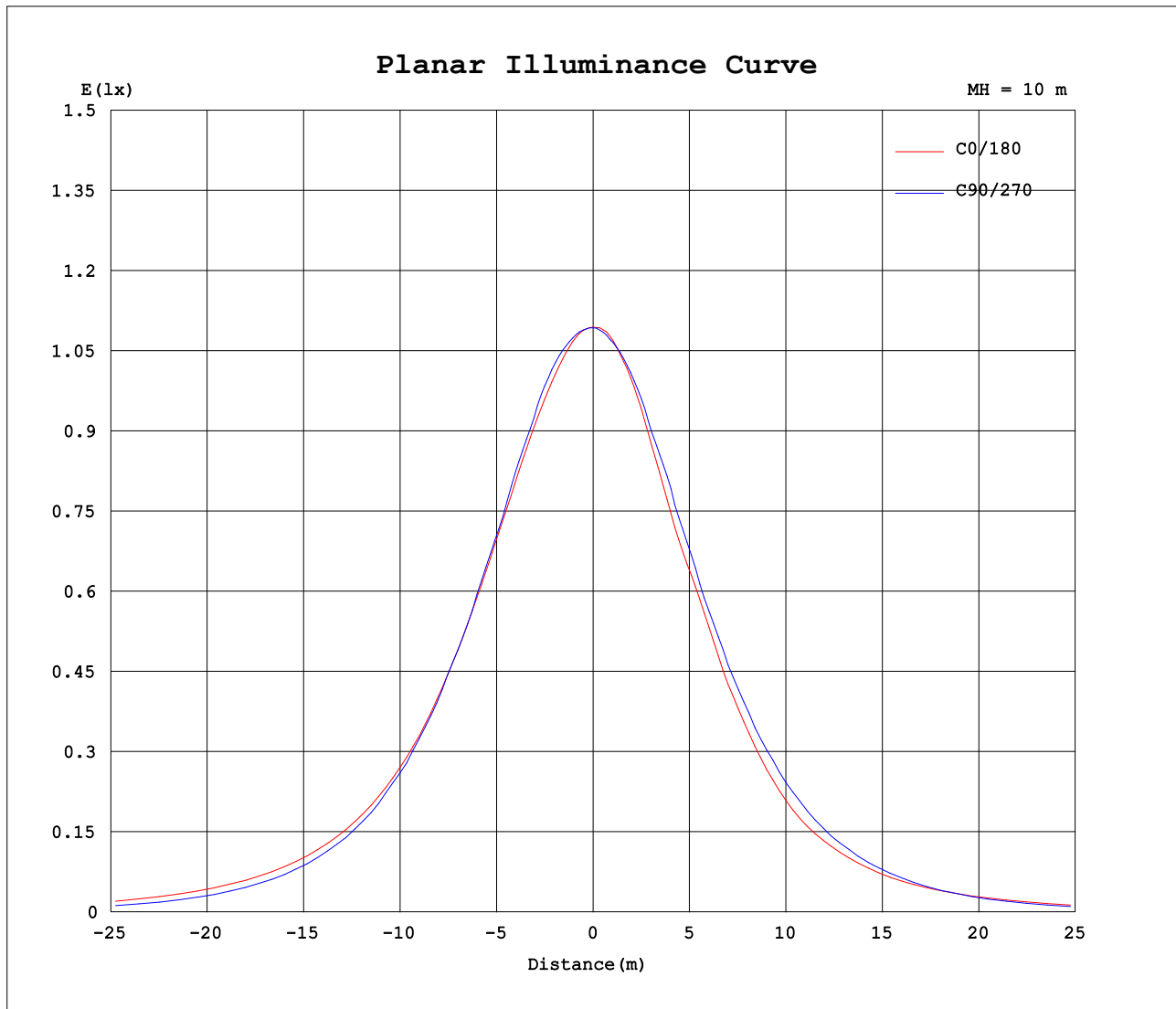
AvgL	cd/m2
L_0~180 (65) av	6352
L_0~180 (75) av	5905
L_0~180 (85) av	6325
L_90~270 (65) av	4883
L_90~270 (75) av	2547
L_90~270 (85) av	912
L_45 (65) av	5991
L_45 (75) av	5356
L_45 (85) av	5048

Standard: GB/T 29293-2012

C Range: 0 - 360DEG
 C Interval: 30.0DEG
 Test Speed: HIGH
 Temperature:25.3DEG
 Operators:LPC
 Test Date:2021-10-22

γ Range: 0 - 120DEG
 γ Interval: 1.0DEG
 Test System:EVERFINE GO-2000B_V1 SYSTEM V2.0.362
 Humidity:65.0%
 Test Distance:9.200m [K=1.0000]
 Remarks:

Planar Illuminance Curve



C Range: 0 - 360DEG
C Interval: 30.0DEG
Test Speed: HIGH
Temperature: 25.3DEG
Operators: LPC
Test Date: 2021-10-22

γ Range: 0 - 120DEG
 γ Interval: 1.0DEG
Test System: EVERFINE GO-2000B_V1 SYSTEM V2.0.362
Humidity: 65.0%
Test Distance: 9.200m [K=1.0000]
Remarks:

LUMINOUS DISTRIBUTION INTENSITY DATA

Test:U:24.00V I:0.3198A P:7.675W PF:1.000 Freq:50.00Hz Lamp Flux:4.3184x70 lm		
NAME: P01-24V-5050-70-DMX-RGBW(4000K)-G	TYPE:	WEIGHT:
SPEC.:	DIM.:	SERIAL No.:
MFR.: OLYMPIA	SUR.:1*0.014	Shielding Angle:

Table--1

UNIT: cd

C (DEG) γ (DEG)	0	30	60	90	120	150	180	210	240	270	300	330							
0	109	109	109	109	109	109	109	109	109	109	109	109							
5	109	109	109	109	109	109	109	109	109	109	108	108	109						
10	107	108	109	109	108	107	106	106	107	107	107	107							
15	105	106	107	107	106	103	102	102	104	105	105	104							
20	102	103	103	104	103	98.1	96.0	96.7	100	101	100	102							
25	98.6	100	99.8	99.6	97.7	92.1	90.5	90.5	94.6	96.1	96.0	98.3							
30	94.5	96.2	94.3	95.7	91.4	87.5	86.2	85.3	88.5	90.5	91.7	94.4							
35	89.4	91.4	89.4	89.4	84.2	81.2	77.7	79.6	81.6	84.2	85.7	89.4							
40	83.2	85.3	83.5	82.0	75.5	71.6	69.1	70.2	73.3	76.9	80.9	83.7							
45	76.6	78.1	76.7	73.8	67.0	61.7	59.2	60.4	64.6	68.7	74.4	77.0							
50	69.3	70.5	69.0	64.1	58.2	52.3	50.9	51.0	56.2	59.4	67.0	69.4							
55	61.8	62.5	59.6	54.0	45.7	44.5	43.6	43.1	44.6	49.2	58.6	61.5							
60	53.9	53.9	50.3	43.2	35.2	36.8	36.5	35.4	33.8	38.2	49.4	52.9							
65	45.2	45.0	40.4	30.8	27.8	29.6	30.0	28.3	26.5	27.0	39.7	44.3							
70	35.3	35.9	30.1	19.2	20.5	22.6	23.4	21.6	19.6	16.3	29.9	35.5							
75	25.9	26.5	20.5	10.4	13.8	16.0	16.9	15.0	13.0	8.04	20.5	26.3							
80	17.6	17.3	12.2	4.34	8.01	9.72	10.5	9.00	7.39	3.09	12.3	17.6							
85	10.3	9.82	5.92	1.42	3.77	4.84	5.13	4.18	3.29	0.81	5.85	10.1							
90	5.01	4.74	2.37	1.00	1.85	2.09	1.79	1.61	1.38	0.52	2.12	4.70							
95	2.22	2.12	1.63	1.07	1.68	1.62	0.90	1.15	1.26	0.58	1.25	1.92							
100	1.34	1.53	1.62	1.17	1.68	1.65	0.97	1.16	1.26	0.73	1.24	1.19							
105	1.33	1.57	1.49	1.35	1.56	1.73	1.05	1.24	1.18	0.87	1.11	1.18							
110	1.36	1.60	1.64	1.36	1.72	1.78	1.13	1.29	1.39	0.87	1.27	1.20							
115	1.42	1.65	1.74	1.43	1.81	1.83	1.22	1.36	1.48	0.94	1.32	1.24							
120	1.50	1.65	1.59	1.49	1.84	1.87	1.25	1.42	1.49	1.05	1.12	1.22							
125	0.00	0.00	0.00	0.00	0.00	0.00	0.00	0.00	0.00	0.00	0.00	0.00							
130	0.00	0.00	0.00	0.00	0.00	0.00	0.00	0.00	0.00	0.00	0.00	0.00							
135	0.00	0.00	0.00	0.00	0.00	0.00	0.00	0.00	0.00	0.00	0.00	0.00							
140	0.00	0.00	0.00	0.00	0.00	0.00	0.00	0.00	0.00	0.00	0.00	0.00							
145	0.00	0.00	0.00	0.00	0.00	0.00	0.00	0.00	0.00	0.00	0.00	0.00							
150	0.00	0.00	0.00	0.00	0.00	0.00	0.00	0.00	0.00	0.00	0.00	0.00							
155	0.00	0.00	0.00	0.00	0.00	0.00	0.00	0.00	0.00	0.00	0.00	0.00							
160	0.00	0.00	0.00	0.00	0.00	0.00	0.00	0.00	0.00	0.00	0.00	0.00							
165	0.00	0.00	0.00	0.00	0.00	0.00	0.00	0.00	0.00	0.00	0.00	0.00							
170	0.00	0.00	0.00	0.00	0.00	0.00	0.00	0.00	0.00	0.00	0.00	0.00							
175	0.00	0.00	0.00	0.00	0.00	0.00	0.00	0.00	0.00	0.00	0.00	0.00							
180	0.00	0.00	0.00	0.00	0.00	0.00	0.00	0.00	0.00	0.00	0.00	0.00							

C Range: 0 - 360DEG
C Interval: 30.0DEG
Test Speed: HIGH
Temperature:25.3DEG
Operators:LPC
Test Date:2021-10-22

γ Range: 0 - 120DEG
γ Interval: 1.0DEG
Test System:EVERFINE GO-2000B_V1 SYSTEM V2.0.362
Humidity:65.0%
Test Distance:9.200m [K=1.0000]
Remarks: