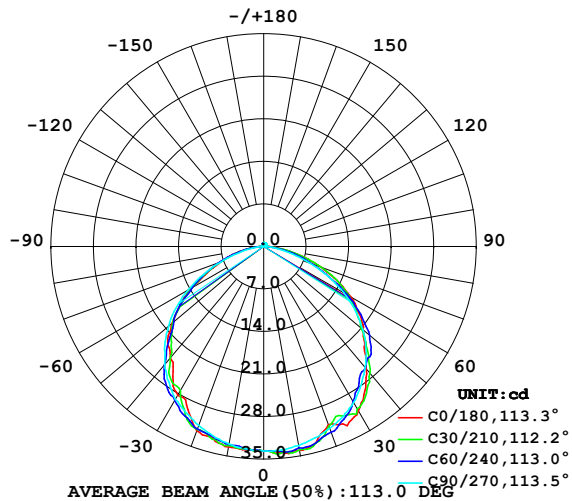


LUMINAIRE PHOTOMETRIC TEST REPORT

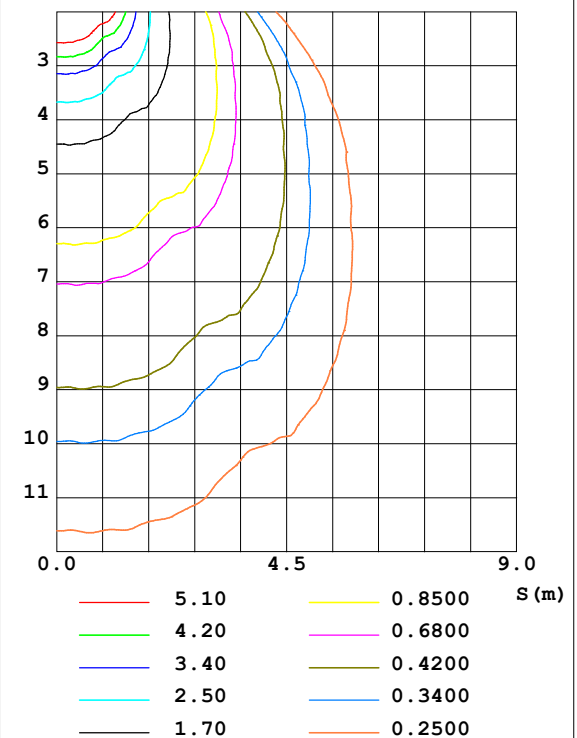
Test:U:24.00V I:0.3155A P:7.572W PF:1.000 Lamp Flux:99.0902x1 lm		
NAME: SP01-24V-5050-70-DMX3-RGB-R	TYPE: 硅胶	WEIGHT:
DIM.: 15MM*7MM	SPEC.:	SERIAL No.:202301008
MFR.: OLYMPIA	SUR.:1*0.015	PROTECTION ANGLE:

DATA OF LAMP		PHOTOMETRIC DATA Eff: 13.09 lm/W			
MODEL	5050	I _{max} (cd)	34.33	S/MH (C0/180)	1.35
NOMINAL POWER (W)	15	LOR (%)	100.0	S/MH (C90/270)	1.30
RATED VOLTAGE (V)	24	TOTAL FLUX (lm)	99.090	η UP, DN (C0-180)	1.4, 49.8
NOMINAL FLUX (lm)	99.0902	CIE CLASS	DIRECT	η UP, DN (C180-360)	1.0, 47.9
LAMPS INSIDE	1	η up (%)	2.3	CIBSE SHR NOM	1.25
TEST VOLTAGE (V)	24.0	η down (%)	97.7	CIBSE SHR MAX	1.35

LUMINOUS INTENSITY DISTRIBUTION DIAGRAM



C0 PLANE ISOLUX DIAGRAM (UNIT:lx)



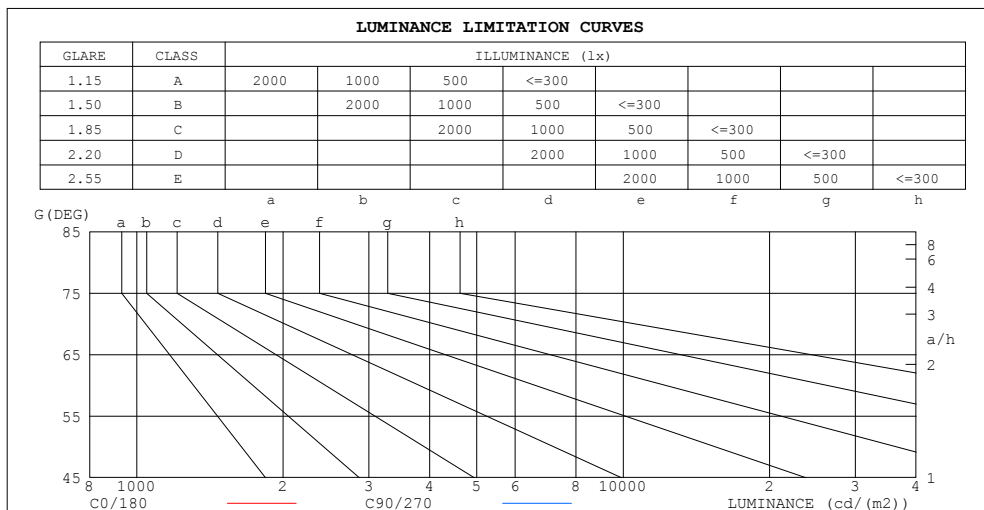
C Range: 0 - 360DEG
C Interval: 30.0DEG
Test Speed: HIGH
Temperature:25.3DEG
Operators:WFW
Test Date:2023-01-06

γ Range: 0 - 180DEG
γ Interval: 1.0DEG
Test System:EVERFINE GO-2000B_V1 SYSTEM V2.0.269
Humidity:65.0%
Test Distance:10.800m [K=1.0000]
Remarks:

ZONAL FLUX DIAGRAM AND LUMINANCE LIMITATION CURVES

ZONAL FLUX DIAGRAM:

γ	C0	C45	C90	C135	C180	C225	C270	C315	γ	Φ zone	Φ total	%lum, lamp
10	34.05	33.80	33.25	33.20	33.49	33.18	32.98	33.37	0- 10	3.207	3.207	3.24,3.24
20	31.21	31.99	31.82	32.28	32.30	32.01	31.31	31.59	10- 20	9.268	12.47	12.6,12.6
30	31.22	30.10	29.62	28.77	28.27	28.36	29.06	29.88	20- 30	14.19	26.67	26.9,26.9
40	26.26	26.66	26.02	25.05	23.91	24.67	25.33	26.13	30- 40	17.31	43.97	44.4,44.4
50	21.25	21.85	21.36	19.83	19.74	19.44	20.42	21.27	40- 50	17.82	61.79	62.4,62.4
60	16.53	16.07	15.27	13.96	13.76	13.61	14.45	15.61	50- 60	15.96	77.75	78.5,78.5
70	10.10	9.329	8.208	8.031	7.537	7.728	7.555	9.113	60- 70	11.48	89.23	90.1,90.1
80	3.995	3.550	2.476	3.131	3.188	2.922	2.241	3.414	70- 80	6.000	95.23	96.1,96.1
90	0.4028	0.3257	0.3602	0.3365	0.1727	0.1978	0.2220	0.2185	80- 90	1.538	96.77	97.7,97.7
100	0.2700	0.3186	0.4019	0.3325	0.1870	0.1836	0.2008	0.1835	90-100	0.2717	97.04	97.9,97.9
110	0.2839	0.3773	0.4710	0.3913	0.2493	0.2251	0.2077	0.2217	100-110	0.2933	97.34	98.2,98.2
120	0.3600	0.4121	0.4986	0.4293	0.3117	0.2977	0.2701	0.2631	110-120	0.3235	97.66	98.6,98.6
130	0.3948	0.4571	0.5125	0.4744	0.3741	0.3393	0.2978	0.3187	120-130	0.3369	98.00	98.9,98.9
140	0.4432	0.5090	0.5609	0.5195	0.4433	0.4156	0.3809	0.3913	130-140	0.3286	98.33	99.2,99.2
150	0.5056	0.5264	0.5887	0.5437	0.5127	0.4950	0.4293	0.4502	140-150	0.3020	98.63	99.5,99.5
160	0.5194	0.5713	0.6165	0.5645	0.5818	0.5333	0.5056	0.5332	150-160	0.2447	98.87	99.8,99.8
170	0.5748	0.6197	0.6303	0.5887	0.6233	0.5748	0.5333	0.5679	160-170	0.1609	99.03	99.9,99.9
180	0.6303	0.6303	0.6372	0.6268	0.6303	0.6337	0.6164	0.6268	170-180	0.0574	99.09	100,100
DEG	LUMINOUS INTENSITY:cd									UNIT:lm		



LUMINANCE cd/(m2)		
G (DEG)	C0/180	C90/270
85	184	109
80	230	143
75	270	193
70	295	240
65	315	277
60	331	305
55	335	321
50	331	332
45	332	336

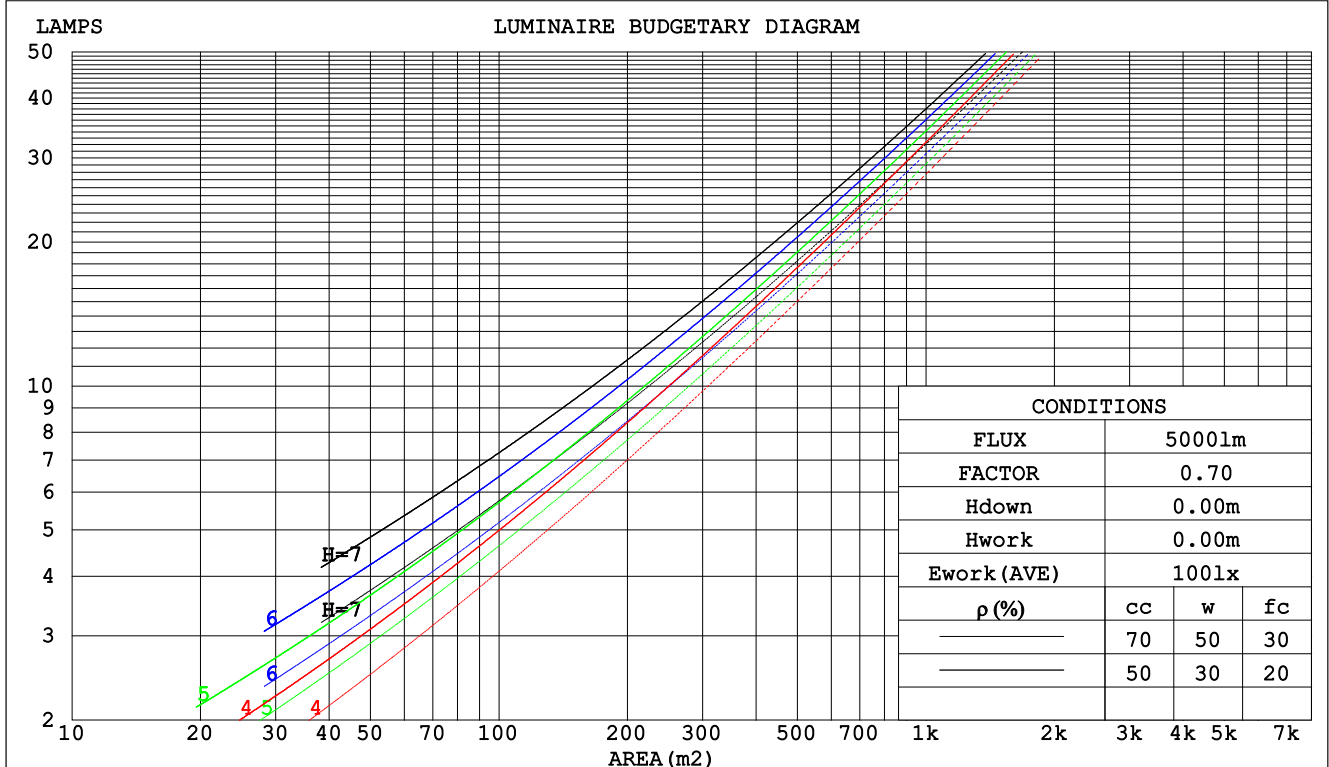
C Range: 0 - 360DEG
C Interval: 30.0DEG
Test Speed: HIGH
Temperature:25.3DEG
Operators:WFW
Test Date:2023-01-06

γ Range: 0 - 180DEG
 γ Interval: 1.0DEG
Test System:EVERFINE GO-2000B_V1 SYSTEM V2.0.269
Humidity:65.0%
Test Distance:10.800m [K=1.0000]
Remarks:

CU AND LUMINAIRE BUDGETARY ESTIMATE DIAGRAM

Test:U:24.00V I:0.3155A P:7.572W PF:1.000 Lamp Flux:99.0902x1 lm		
NAME: SP01-24V-5050-70-DMX3-RGB-R	TYPE: 硅胶	WEIGHT:
DIM.: 15MM*7MM	SPEC.:	SERIAL No.:202301008
MFR.: OLYMPIA	SUR.:1*0.015	PROTECTION ANGLE:

pcc	80%			70%			50%			30%			10%			0
pw	50%	30%	10%	50%	30%	10%	50%	30%	10%	50%	30%	10%	50%	30%	10%	0
pfc	20%			20%			20%			20%			20%			0
RCR	RCR:Room Cavity Ratio						Coefficients of Utilization(CU)									
0.0	1.18	1.18	1.18	1.15	1.15	1.15	1.10	1.10	1.10	1.05	1.05	1.05	.00	.00	.00	.98
1.0	1.04	.00	.96	1.01	.97	.94	.97	.93	.91	.92	.90	.87	.88	.86	.84	.82
2.0	.91	.84	.78	.88	.82	.77	.85	.79	.75	.81	.77	.73	.78	.74	.71	.69
3.0	.80	.72	.65	.78	.70	.64	.75	.68	.63	.71	.66	.62	.69	.64	.60	.58
4.0	.70	.62	.55	.69	.61	.55	.66	.59	.54	.64	.58	.53	.61	.56	.52	.49
5.0	.63	.54	.47	.62	.53	.47	.59	.52	.46	.57	.51	.46	.55	.49	.45	.43
6.0	.57	.48	.41	.56	.47	.41	.54	.46	.41	.52	.45	.40	.50	.44	.39	.37
7.0	.51	.43	.36	.50	.42	.36	.49	.41	.36	.47	.40	.35	.45	.40	.35	.33
8.0	.47	.38	.32	.46	.38	.32	.44	.37	.32	.43	.36	.32	.42	.36	.31	.29
9.0	.43	.35	.29	.42	.34	.29	.41	.34	.29	.40	.33	.29	.38	.33	.28	.26
10.0	.40	.32	.26	.39	.31	.26	.38	.31	.26	.37	.30	.26	.36	.30	.26	.24



C Range: 0 - 360DEG
C Interval: 30.0DEG
Test Speed: HIGH
Temperature:25.3DEG
Operators:WFW
Test Date:2023-01-06

γ Range: 0 - 180DEG
γ Interval: 1.0DEG
Test System:EVERFINE GO-2000B_V1 SYSTEM V2.0.269
Humidity:65.0%
Test Distance:10.800m [K=1.0000]
Remarks:

WEC AND CCEC

Test:U:24.00V I:0.3155A P:7.572W PF:1.000 Lamp Flux:99.0902x1 lm					
NAME: SP01-24V-5050-70-DMX3-RGB-R			TYPE: 硅胶		WEIGHT:
DIM.: 15MM*7MM			SPEC.:		SERIAL No.:202301008
MFR.: OLYMPIA			SUR.:1*0.015		PROTECTION ANGLE:

pcc	80%			70%			50%			30%			10%			0	
pw	50%	30%	10%	50%	30%	10%	50%	30%	10%	50%	30%	10%	50%	30%	10%	0	
pfc	20%			20%			20%			20%			20%			0	
RCR	RCR:Room Cavity Ratio						Wall Exitance Coefficients(WEC)										
0.0																	
1.0	.301	.171	.054	.293	.167	.053	.279	.160	.051	.265	.153	.049	.253	.147	.047		
2.0	.285	.156	.048	.278	.153	.047	.265	.148	.046	.253	.142	.045	.242	.137	.043		
3.0	.265	.141	.042	.259	.139	.042	.247	.134	.041	.237	.130	.040	.227	.126	.039		
4.0	.245	.127	.037	.240	.126	.037	.230	.122	.036	.220	.118	.036	.211	.115	.035		
5.0	.227	.116	.034	.223	.114	.033	.213	.111	.033	.205	.108	.032	.197	.105	.032		
6.0	.211	.106	.030	.207	.105	.030	.199	.102	.030	.191	.099	.029	.184	.097	.029		
7.0	.197	.097	.028	.193	.096	.027	.186	.094	.027	.179	.092	.027	.172	.090	.026		
8.0	.184	.090	.025	.181	.089	.025	.174	.087	.025	.168	.085	.025	.162	.083	.024		
9.0	.173	.084	.023	.170	.083	.023	.164	.081	.023	.158	.079	.023	.153	.078	.022		
10.0	.162	.078	.022	.160	.077	.022	.154	.076	.021	.149	.074	.021	.144	.073	.021		

pcc	80%			70%			50%			30%			10%			0
pw	50%	30%	10%	50%	30%	10%	50%	30%	10%	50%	30%	10%	50%	30%	10%	0
pfc	20%			20%			20%			20%			20%			0
RCR	RCR:Room Cavity Ratio						Ceiling Cavity Exitance Coefficients(CCEC)									
0.0	.208	.208	.208	.178	.178	.178	.122	.122	.122	.070	.070	.070	.022	.022	.022	
1.0	.198	.174	.153	.169	.150	.132	.116	.103	.091	.067	.060	.053	.021	.019	.017	
2.0	.189	.150	.117	.162	.129	.101	.111	.089	.070	.064	.052	.041	.021	.017	.013	
3.0	.182	.132	.093	.156	.114	.081	.107	.079	.057	.062	.046	.033	.020	.015	.011	
4.0	.174	.119	.077	.149	.103	.067	.103	.072	.047	.059	.042	.028	.019	.014	.009	
5.0	.167	.109	.066	.143	.094	.057	.099	.066	.041	.057	.039	.024	.018	.013	.008	
6.0	.160	.100	.058	.137	.087	.050	.095	.061	.036	.055	.036	.021	.018	.012	.007	
7.0	.153	.094	.052	.132	.081	.045	.091	.057	.032	.053	.034	.019	.017	.011	.006	
8.0	.147	.088	.047	.126	.076	.041	.087	.053	.029	.051	.032	.017	.016	.010	.006	
9.0	.141	.083	.044	.121	.072	.038	.084	.051	.027	.049	.030	.016	.016	.010	.005	
10.0	.135	.079	.041	.117	.068	.036	.081	.048	.025	.047	.028	.015	.015	.009	.005	

C Range: 0 - 360DEG
 C Interval: 30.0DEG
 Test Speed: HIGH
 Temperature:25.3DEG
 Operators:WFW
 Test Date:2023-01-06

γ Range: 0 - 180DEG
 γ Interval: 1.0DEG
 Test System:EVERFINE GO-2000B_V1 SYSTEM V2.0.269
 Humidity:65.0%
 Test Distance:10.800m [K=1.0000]
 Remarks:

Uncorrected UGR Table

Test:U:24.00V I:0.3155A P:7.572W PF:1.000 Lamp Flux:99.0902x1 lm										
NAME: SP01-24V-5050-70-DMX3-RGB-R						TYPE:硅胶		WEIGHT:		
DIM.: 15MM*7MM						SPEC.:		SERIAL No.:202301008		
MFR.: OLYMPIA						SUR.:1*0.015		PROTECTION ANGLE:		
ceiling/cavity	0.7	0.7	0.5	0.5	0.3	0.7	0.7	0.5	0.5	0.3
walls	0.5	0.3	0.5	0.3	0.3	0.5	0.3	0.5	0.3	0.3
working plane	0.2	0.2	0.2	0.2	0.2	0.2	0.2	0.2	0.2	0.2
Room dimensions	Viewed crosswise					Viewed endwise				
x = 2H y = 2H	9.2	10.7	9.5	10.9	11.2	9.0	10.5	9.3	10.7	11.0
3H	10.7	12.1	11.1	12.4	12.7	10.2	11.6	10.5	11.8	12.1
4H	11.3	12.6	11.7	12.9	13.2	10.6	11.9	10.9	12.2	12.5
6H	11.7	12.9	12.1	13.2	13.5	10.8	12.0	11.1	12.3	12.6
8H	11.8	13.0	12.2	13.3	13.6	10.8	12.0	11.2	12.3	12.6
12H	11.8	13.0	12.2	13.3	13.7	10.8	11.9	11.2	12.3	12.6
4H 2H	9.8	11.1	10.1	11.4	11.7	9.6	10.9	10.0	11.2	11.5
3H	11.5	12.6	11.9	13.0	13.3	11.0	12.1	11.3	12.4	12.8
4H	12.2	13.2	12.6	13.6	14.0	11.4	12.5	11.8	12.8	13.2
6H	12.7	13.6	13.1	14.0	14.4	11.7	12.6	12.2	13.0	13.4
8H	12.8	13.7	13.3	14.1	14.5	11.8	12.6	12.2	13.0	13.5
12H	12.9	13.7	13.4	14.1	14.6	11.8	12.6	12.3	13.0	13.5
8H 4H	12.4	13.2	12.8	13.6	14.1	11.7	12.5	12.1	13.0	13.4
6H	13.0	13.7	13.5	14.1	14.6	12.1	12.8	12.6	13.3	13.7
8H	13.2	13.8	13.7	14.3	14.8	12.2	12.9	12.7	13.3	13.8
12H	13.4	13.9	13.9	14.4	14.9	12.3	12.8	12.8	13.3	13.9
12H 4H	12.4	13.1	12.8	13.6	14.0	11.7	12.5	12.2	12.9	13.4
6H	13.0	13.6	13.5	14.1	14.6	12.2	12.8	12.7	13.2	13.7
8H	13.3	13.8	13.8	14.3	14.8	12.3	12.9	12.8	13.3	13.9
Variations with the observer position at spacings:										
S = 1.0H	+ 0.2 / - 0.2					+ 0.2 / - 0.2				
1.5H	+ 0.1 / - 0.3					+ 0.3 / - 0.4				
2.0H	+ 0.2 / - 0.4					+ 0.3 / - 0.4				

CIE Pub.117 Corrected 99.09 lm Total Lamp Luminous Flux. (8log(F/F0) = -8.0)

C Range: 0 - 360DEG
 C Interval: 30.0DEG
 Test Speed: HIGH
 Temperature:25.3DEG
 Operators:WFW
 Test Date:2023-01-06

γ Range: 0 - 180DEG
 γ Interval: 1.0DEG
 Test System:EVERFINE GO-2000B_V1 SYSTEM V2.0.269
 Humidity:65.0%
 Test Distance:10.800m [K=1.0000]
 Remarks:

UTILIZATION FACTORS TABLE

Test:U:24.00V I:0.3155A P:7.572W PF:1.000 Lamp Flux:99.0902x1 lm		
NAME: SP01-24V-5050-70-DMX3-RGB-R	TYPE: 硅胶	WEIGHT:
DIM.: 15MM*7MM	SPEC.:	SERIAL No.:202301008
MFR.: OLYMPIA	SUR.:1*0.015	PROTECTION ANGLE:

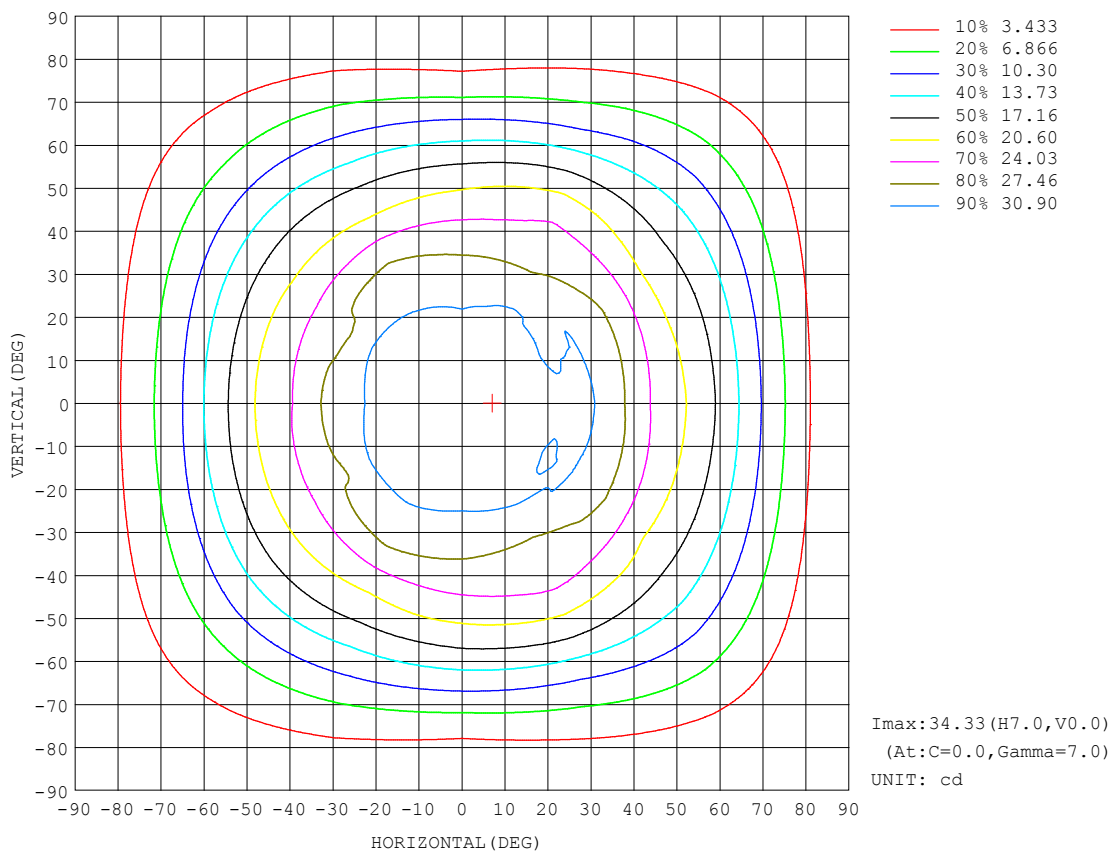
REFLECTANCE										
Ceiling	0.8	0.8	0.8	0.7	0.7	0.7	0.5	0.5	0.5	0
Walls	0.7	0.5	0.3	0.7	0.5	0.3	0.7	0.5	0.3	0
Working plane	0.2	0.2	0.2	0.2	0.2	0.2	0.2	0.2	0.2	0
ROOM INDEX	UTILIZATION FACTORS (PERCENT) $k(RI) \times RCR = 5$									
$k = 0.60$	57	46	39	56	45	39	55	45	38	32
0.80	67	56	48	66	55	48	64	54	48	41
1.00	76	65	58	75	64	57	72	65	57	49
1.25	83	73	65	81	72	65	78	70	64	57
1.50	88	78	71	86	77	71	83	75	69	62
2.00	95	86	80	93	85	79	89	82	77	69
2.50	99	91	85	96	89	84	92	86	82	73
3.00	102	95	90	100	93	89	95	90	86	77
4.00	106	100	96	103	98	94	99	95	91	82
5.00	108	104	100	106	101	98	101	97	94	85
ROOM INDEX	UF(total)									Direct
According to DIN EN 13032-2 2004			Suspended					SHRNM = 1.25		

C Range: 0 - 360DEG
 C Interval: 30.0DEG
 Test Speed: HIGH
 Temperature:25.3DEG
 Operators:WFW
 Test Date:2023-01-06

γ Range: 0 - 180DEG
 γ Interval: 1.0DEG
 Test System:EVERFINE GO-2000B_V1 SYSTEM V2.0.269
 Humidity:65.0%
 Test Distance:10.800m [K=1.0000]
 Remarks:

ISOCANDELA DIAGRAM

Test:U:24.00V I:0.3155A P:7.572W PF:1.000 Lamp Flux:99.0902x1 lm		
NAME: SP01-24V-5050-70-DMX3-RGB-R	TYPE: 硅胶	WEIGHT:
DIM.: 15MM*7MM	SPEC.:	SERIAL No.:202301008
MFR.: OLYMPIA	SUR.:1*0.015	PROTECTION ANGLE:

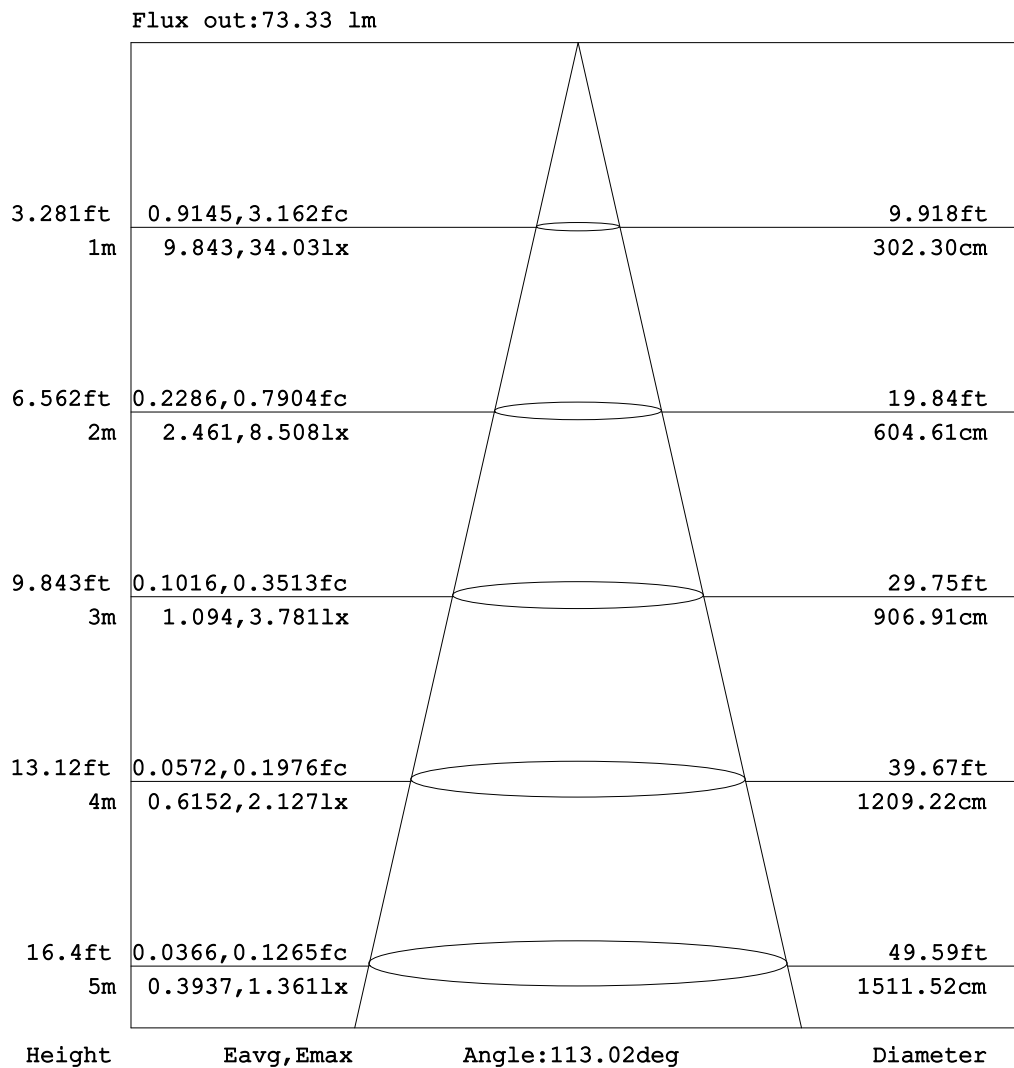


C Range: 0 - 360DEG
C Interval: 30.0DEG
Test Speed: HIGH
Temperature: 25.3DEG
Operators: WFW
Test Date: 2023-01-06

γ Range: 0 - 180DEG
 γ Interval: 1.0DEG
Test System: EVERFINE GO-2000B_V1 SYSTEM V2.0.269
Humidity: 65.0%
Test Distance: 10.800m [K=1.0000]
Remarks:

AAI Figure

Test:U:24.00V I:0.3155A P:7.572W PF:1.000 Lamp Flux:99.0902x1 lm		
NAME: SP01-24V-5050-70-DMX3-RGB-R	TYPE: 硅胶	WEIGHT:
DIM.: 15MM*7MM	SPEC.:	SERIAL No.:202301008
MFR.: OLYMPIA	SUR.:1*0.015	PROTECTION ANGLE:



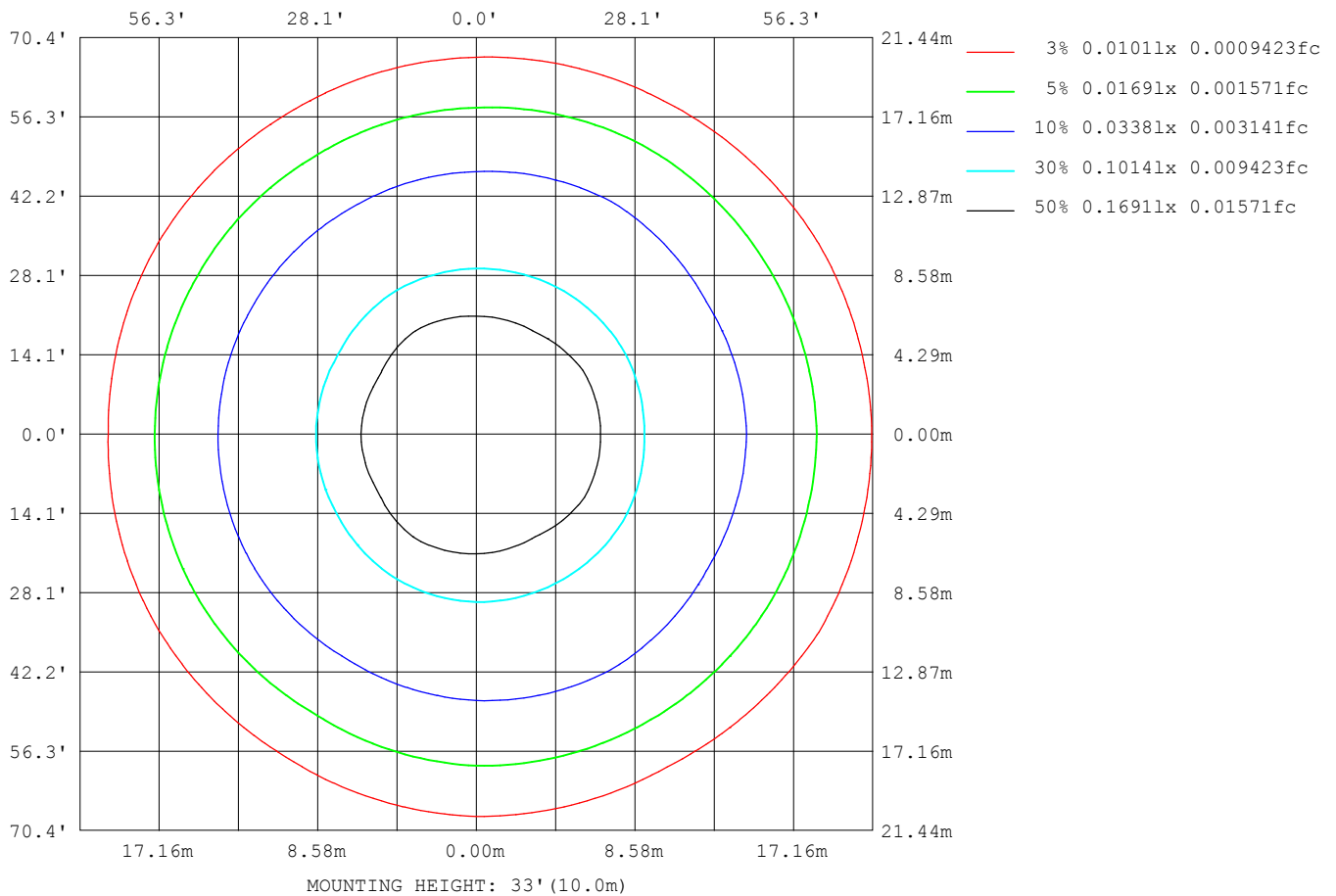
Note: The Curves indicate the illuminated area and the average illumination when the luminaire is at different distance.

C Range: 0 - 360DEG
C Interval: 30.0DEG
Test Speed: HIGH
Temperature: 25.3DEG
Operators: WFW
Test Date: 2023-01-06

γ Range: 0 - 180DEG
γ Interval: 1.0DEG
Test System: EVERFINE GO-2000B_V1 SYSTEM V2.0.269
Humidity: 65.0%
Test Distance: 10.800m [K=1.0000]
Remarks:

ISOLUX DIAGRAM

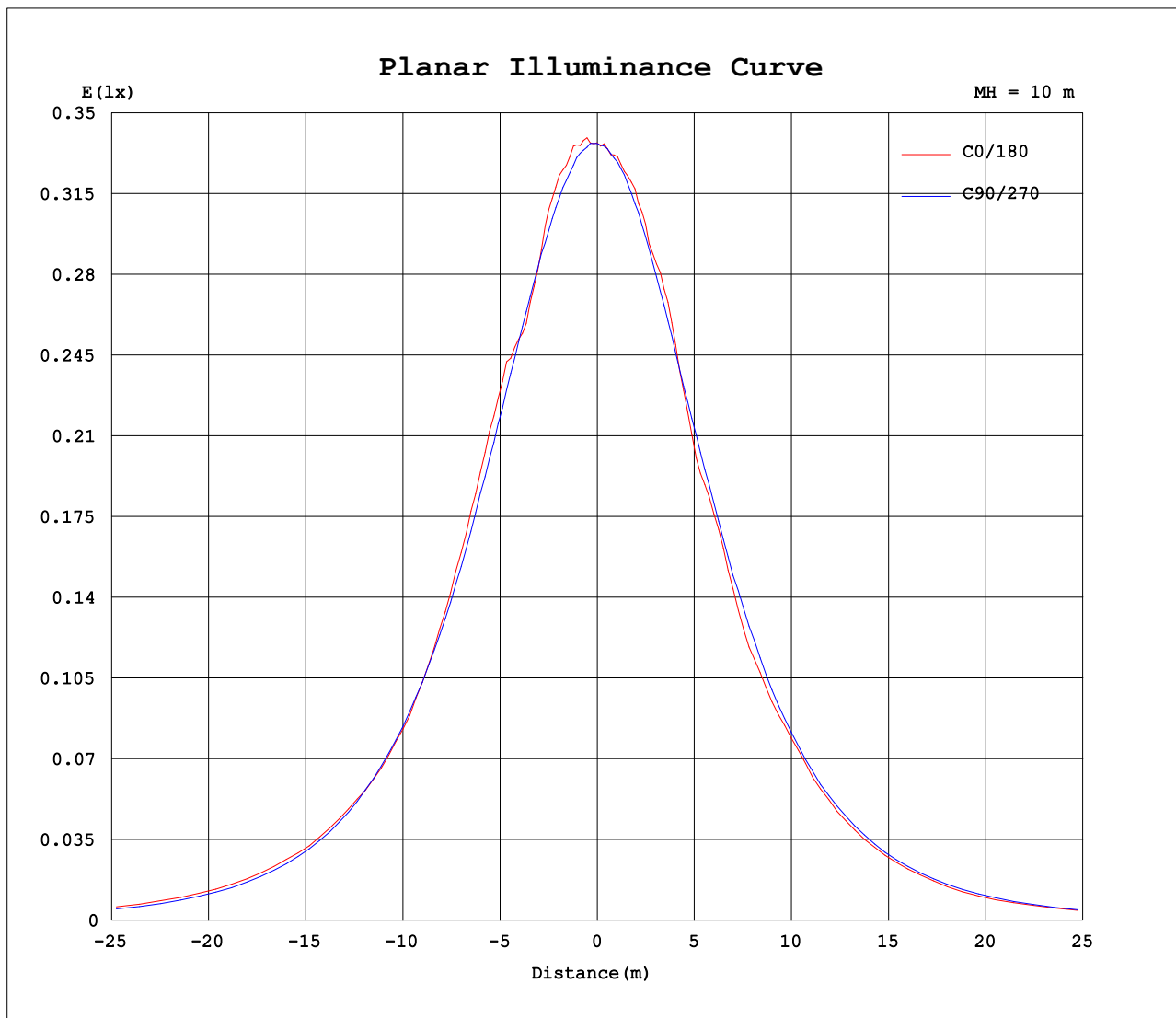
Test:U:24.00V I:0.3155A P:7.572W PF:1.000 Lamp Flux:99.0902x1 lm		
NAME: SP01-24V-5050-70-DMX3-RGB-R	TYPE: 硅胶	WEIGHT:
DIM.: 15MM*7MM	SPEC.:	SERIAL No.:202301008
MFR.: OLYMPIA	SUR.:1*0.015	PROTECTION ANGLE:



C Range: 0 - 360DEG
C Interval: 30.0DEG
Test Speed: HIGH
Temperature:25.3DEG
Operators:WFW
Test Date:2023-01-06

γ Range: 0 - 180DEG
 γ Interval: 1.0DEG
Test System:EVERFINE GO-2000B_V1 SYSTEM V2.0.269
Humidity:65.0%
Test Distance:10.800m [K=1.0000]
Remarks:

Planar Illuminance Curve



C Range: 0 - 360DEG
C Interval: 30.0DEG
Test Speed: HIGH
Temperature: 25.3DEG
Operators: WFW
Test Date: 2023-01-06

γ Range: 0 - 180DEG
 γ Interval: 1.0DEG
Test System: EVERFINE GO-2000B_V1 SYSTEM V2.0.269
Humidity: 65.0%
Test Distance: 10.800m [K=1.0000]
Remarks:

LUMINOUS DISTRIBUTION INTENSITY DATA

Test:U:24.00V I:0.3155A P:7.572W PF:1.000 Lamp Flux:99.0902x1 lm		
NAME: SP01-24V-5050-70-DMX3-RGB-R	TYPE: 硅胶	WEIGHT:
DIM.: 15MM*7MM	SPEC.:	SERIAL No.:202301008
MFR.: OLYMPIA	SUR.:1*0.015	PROTECTION ANGLE:

Table--1

UNIT: cd

C (DEG) γ (DEG)	0	30	60	90	120	150	180	210	240	270	300	330							
0	33.7	33.7	33.6	33.7	33.6	33.6	33.7	33.7	33.6	33.7	33.6	33.6							
5	34.0	34.1	33.9	33.6	33.5	33.4	33.6	33.4	33.5	33.4	33.7	33.9							
10	34.1	34.0	33.6	33.2	33.1	33.3	33.5	33.3	33.1	33.0	33.2	33.5							
15	33.4	33.4	33.4	32.6	32.7	33.0	32.5	32.8	32.4	32.3	32.8	32.9							
20	31.2	31.4	32.5	31.8	32.2	32.3	32.3	32.1	32.0	31.3	32.0	31.2							
25	32.5	30.8	31.3	30.9	31.2	30.9	29.6	30.5	30.8	30.2	30.8	30.4							
30	31.2	30.8	29.4	29.6	29.5	28.0	28.3	27.4	29.3	29.1	29.2	30.6							
35	29.0	29.5	27.4	27.9	28.3	26.8	26.2	26.7	27.9	27.2	27.1	29.2							
40	26.3	27.2	26.1	26.0	25.8	24.3	23.9	23.9	25.4	25.3	25.3	27.0							
45	23.4	24.1	25.0	23.8	22.3	21.9	22.3	21.6	22.1	23.0	24.3	23.6							
50	21.3	20.9	22.8	21.4	19.7	19.9	19.7	19.5	19.4	20.4	22.1	20.5							
55	19.2	18.6	19.6	18.4	17.0	17.1	16.8	16.7	16.8	17.6	18.8	18.1							
60	16.5	16.3	15.9	15.3	14.0	14.0	13.8	13.6	13.7	14.4	15.6	15.6							
65	13.3	13.4	11.9	11.7	11.1	11.0	10.3	10.5	10.8	11.0	11.7	12.9							
70	10.1	10.1	8.57	8.21	8.22	7.84	7.54	7.52	7.94	7.56	8.41	9.82							
75	6.98	6.85	5.74	5.00	5.57	5.26	5.36	5.01	5.29	4.50	5.54	6.56							
80	3.99	3.85	3.25	2.48	3.17	3.09	3.19	2.87	2.97	2.24	3.09	3.74							
85	1.60	1.49	1.25	0.95	1.35	1.36	1.35	1.21	1.16	0.85	1.14	1.41							
90	0.40	0.31	0.34	0.36	0.36	0.31	0.17	0.23	0.17	0.22	0.19	0.25							
95	0.22	0.28	0.32	0.37	0.33	0.31	0.15	0.15	0.18	0.20	0.18	0.16							
100	0.27	0.32	0.32	0.40	0.33	0.34	0.19	0.15	0.21	0.20	0.21	0.16							
105	0.28	0.35	0.32	0.45	0.33	0.36	0.21	0.17	0.24	0.20	0.23	0.16							
110	0.28	0.37	0.38	0.47	0.40	0.38	0.25	0.19	0.26	0.21	0.26	0.19							
115	0.31	0.39	0.39	0.48	0.40	0.42	0.27	0.21	0.30	0.25	0.29	0.19							
120	0.36	0.42	0.40	0.50	0.42	0.44	0.31	0.27	0.33	0.27	0.32	0.21							
125	0.39	0.45	0.42	0.51	0.45	0.47	0.34	0.27	0.35	0.27	0.33	0.26							
130	0.39	0.47	0.44	0.51	0.46	0.49	0.37	0.30	0.37	0.30	0.36	0.28							
135	0.42	0.50	0.45	0.53	0.46	0.52	0.41	0.35	0.42	0.33	0.39	0.30							
140	0.44	0.52	0.50	0.56	0.51	0.53	0.44	0.39	0.44	0.38	0.42	0.36							
145	0.49	0.55	0.50	0.57	0.51	0.54	0.48	0.40	0.48	0.39	0.46	0.40							
150	0.51	0.55	0.50	0.59	0.51	0.57	0.51	0.47	0.52	0.43	0.50	0.40							
155	0.51	0.58	0.53	0.60	0.51	0.58	0.55	0.49	0.55	0.51	0.53	0.44							
160	0.52	0.60	0.55	0.62	0.53	0.60	0.58	0.49	0.57	0.51	0.57	0.50							
165	0.53	0.62	0.56	0.62	0.54	0.61	0.60	0.52	0.60	0.53	0.58	0.51							
170	0.57	0.63	0.61	0.63	0.56	0.62	0.62	0.54	0.61	0.53	0.61	0.53							
175	0.62	0.64	0.60	0.64	0.61	0.62	0.63	0.58	0.61	0.55	0.62	0.56							
180	0.63	0.64	0.62	0.64	0.64	0.62	0.63	0.63	0.64	0.62	0.64	0.62							

C Range: 0 - 360DEG
C Interval: 30.0DEG
Test Speed: HIGH
Temperature:25.3DEG
Operators:WFW
Test Date:2023-01-06

γ Range: 0 - 180DEG
γ Interval: 1.0DEG
Test System:EVERFINE GO-2000B_V1 SYSTEM V2.0.269
Humidity:65.0%
Test Distance:10.800m [K=1.0000]
Remarks:

Photometric Data Table [cd]

G/C	0.0	30.0	60.0	90.0	120.0	150.0	180.0	210.0	240.0	270.0
0.0	33.70	33.68	33.64	33.67	33.58	33.56	33.70	33.68	33.64	33.67
3.0	34.07	34.06	33.70	33.65	33.53	33.56	33.59	33.66	33.57	33.59
6.0	34.17	33.97	34.07	33.62	33.33	33.44	33.64	33.47	33.32	33.40
9.0	33.97	34.17	33.83	33.30	33.17	33.24	33.49	33.25	33.10	33.11
12.0	33.97	34.13	33.74	33.01	33.15	33.31	33.21	33.27	32.86	32.78
15.0	33.40	33.44	33.43	32.59	32.69	32.98	32.54	32.85	32.40	32.28
18.0	31.93	32.59	32.75	32.17	32.49	32.12	32.64	32.07	32.12	31.70
21.0	31.28	31.23	32.48	31.64	32.23	32.22	31.84	31.92	31.86	31.14
24.0	31.97	30.47	31.54	31.10	31.22	31.38	30.14	31.11	30.88	30.37
27.0	31.97	31.05	30.80	30.42	30.55	29.54	28.33	29.42	30.33	29.74
30.0	31.22	30.81	29.39	29.62	29.49	28.04	28.27	27.45	29.28	29.06
33.0	30.07	30.29	28.18	28.61	28.99	27.31	27.38	27.09	28.64	28.00
36.0	28.63	28.96	26.85	27.57	27.85	26.50	25.38	26.33	27.55	26.96
39.0	26.95	27.60	26.22	26.38	26.38	24.91	24.10	24.46	26.03	25.79
42.0	25.17	26.02	25.39	25.14	24.41	22.84	23.09	22.69	23.98	24.34
45.0	23.44	24.12	25.03	23.78	22.34	21.90	22.34	21.59	22.13	23.05
48.0	22.08	22.19	23.61	22.40	20.62	20.68	20.65	20.34	20.13	21.54
51.0	21.15	20.48	22.27	20.71	19.38	19.43	18.99	19.15	19.08	19.92
54.0	19.81	19.01	20.04	18.98	17.72	17.51	17.34	17.23	17.32	18.24
57.0	18.17	17.66	18.00	17.16	15.61	15.90	15.64	15.48	15.48	16.32
60.0	16.53	16.28	15.87	15.27	13.97	13.95	13.76	13.57	13.66	14.45
63.0	14.60	14.50	13.56	13.15	12.09	11.94	11.44	11.75	11.84	12.42
66.0	12.73	12.75	11.19	11.01	10.49	10.36	9.683	9.826	10.13	10.27
69.0	10.62	10.81	9.135	8.901	8.739	8.417	7.974	8.122	8.492	8.330
72.0	8.756	8.817	7.411	6.816	7.037	6.748	6.685	6.494	6.836	6.281
75.0	6.981	6.852	5.741	5.003	5.567	5.260	5.356	5.012	5.286	4.501
78.0	5.104	4.968	4.141	3.404	4.112	3.896	4.013	3.695	3.846	3.024
81.0	3.455	3.327	2.762	2.096	2.733	2.705	2.780	2.537	2.551	1.893
84.0	2.000	1.880	1.584	1.196	1.652	1.666	1.679	1.499	1.471	1.062
87.0	0.9179	0.8362	0.6956	0.5809	0.8270	0.8434	0.7663	0.7018	0.6488	0.5071
90.0	0.4028	0.3115	0.3399	0.3602	0.3614	0.3115	0.1727	0.2294	0.1662	0.2220
93.0	0.3187	0.2840	0.3186	0.3671	0.3255	0.3047	0.1385	0.1524	0.1731	0.2078
96.0	0.2490	0.3117	0.3186	0.3741	0.3255	0.3187	0.1594	0.1524	0.1872	0.2008
99.0	0.2630	0.3186	0.3186	0.4017	0.3255	0.3394	0.1733	0.1524	0.2147	0.2008
102.0	0.2770	0.3187	0.3186	0.4225	0.3255	0.3533	0.1872	0.1661	0.2286	0.2008
105.0	0.2770	0.3464	0.3186	0.4502	0.3255	0.3603	0.2079	0.1662	0.2424	0.2008
108.0	0.2770	0.3603	0.3530	0.4572	0.3737	0.3809	0.2286	0.1662	0.2632	0.2008
111.0	0.2977	0.3810	0.3878	0.4710	0.4017	0.4018	0.2494	0.1870	0.2701	0.2146
114.0	0.3047	0.3948	0.3879	0.4779	0.4017	0.4225	0.2701	0.1939	0.2910	0.2285
117.0	0.3254	0.4087	0.3948	0.4848	0.4017	0.4363	0.2910	0.2146	0.3047	0.2631
120.0	0.3600	0.4225	0.4016	0.4986	0.4154	0.4433	0.3117	0.2698	0.3256	0.2701
123.0	0.3947	0.4433	0.4155	0.4987	0.4086	0.4572	0.3257	0.2701	0.3463	0.2701
126.0	0.3948	0.4502	0.4155	0.5125	0.4502	0.4711	0.3532	0.2770	0.3533	0.2701
129.0	0.3948	0.4710	0.4433	0.5125	0.4570	0.4849	0.3740	0.2908	0.3740	0.2977
132.0	0.4016	0.4779	0.4433	0.5264	0.4571	0.4987	0.3880	0.3185	0.3879	0.3047
135.0	0.4223	0.4987	0.4501	0.5333	0.4640	0.5194	0.4087	0.3530	0.4155	0.3255
138.0	0.4363	0.5194	0.4846	0.5471	0.5053	0.5264	0.4364	0.3878	0.4363	0.3808
141.0	0.4433	0.5264	0.4987	0.5541	0.5125	0.5334	0.4504	0.3878	0.4572	0.3878
144.0	0.4916	0.5403	0.4987	0.5610	0.5125	0.5402	0.4779	0.4016	0.4779	0.3948
147.0	0.5056	0.5471	0.4987	0.5748	0.5125	0.5541	0.4919	0.4155	0.4917	0.4016
150.0	0.5056	0.5542	0.4987	0.5887	0.5125	0.5748	0.5127	0.4707	0.5194	0.4293
153.0	0.5056	0.5749	0.5125	0.5887	0.5125	0.5818	0.5265	0.4917	0.5334	0.4501
156.0	0.5056	0.5956	0.5264	0.6095	0.5262	0.5956	0.5541	0.4917	0.5541	0.5056
159.0	0.5125	0.5956	0.5333	0.6164	0.5264	0.6025	0.5681	0.4917	0.5680	0.5056
162.0	0.5333	0.5956	0.5471	0.6233	0.5333	0.6095	0.5887	0.5055	0.5819	0.5056
165.0	0.5333	0.6233	0.5608	0.6233	0.5402	0.6095	0.6026	0.5194	0.5958	0.5332
168.0	0.5540	0.6234	0.5817	0.6303	0.5541	0.6164	0.6165	0.5332	0.6095	0.5264
171.0	0.5817	0.6303	0.6026	0.6372	0.5816	0.6164	0.6234	0.5402	0.6095	0.5402
174.0	0.6163	0.6372	0.6025	0.6372	0.6094	0.6164	0.6303	0.5677	0.6095	0.5471
177.0	0.6233	0.6372	0.6162	0.6372	0.6164	0.6164	0.6303	0.5956	0.6094	0.5747
180.0	0.6303	0.6372	0.6233	0.6372	0.6372	0.6164	0.6303	0.6303	0.6372	0.6164
G/C	300.0	330.0								
0.0	33.58	33.56								
3.0	33.50	33.86								
6.0	33.88	33.70								
9.0	33.37	33.77								
12.0	33.35	33.59								
15.0	32.83	32.92								
18.0	32.11	31.86								
21.0	31.91	30.91								
24.0	31.19	29.99								
27.0	30.35	30.68								
30.0	29.20	30.56								

C Range: 0 - 360DEG
 C Interval: 30.0DEG
 Test Speed: HIGH
 Temperature: 25.3DEG
 Operators: WFW
 Test Date: 2023-01-06

γ Range: 0 - 180DEG
 γ Interval: 1.0DEG
 Test System: EVERFINE GO-2000B_V1 SYSTEM V2.0.269
 Humidity: 65.0%
 Test Distance: 10.800m [K=1.0000]
 Remarks:

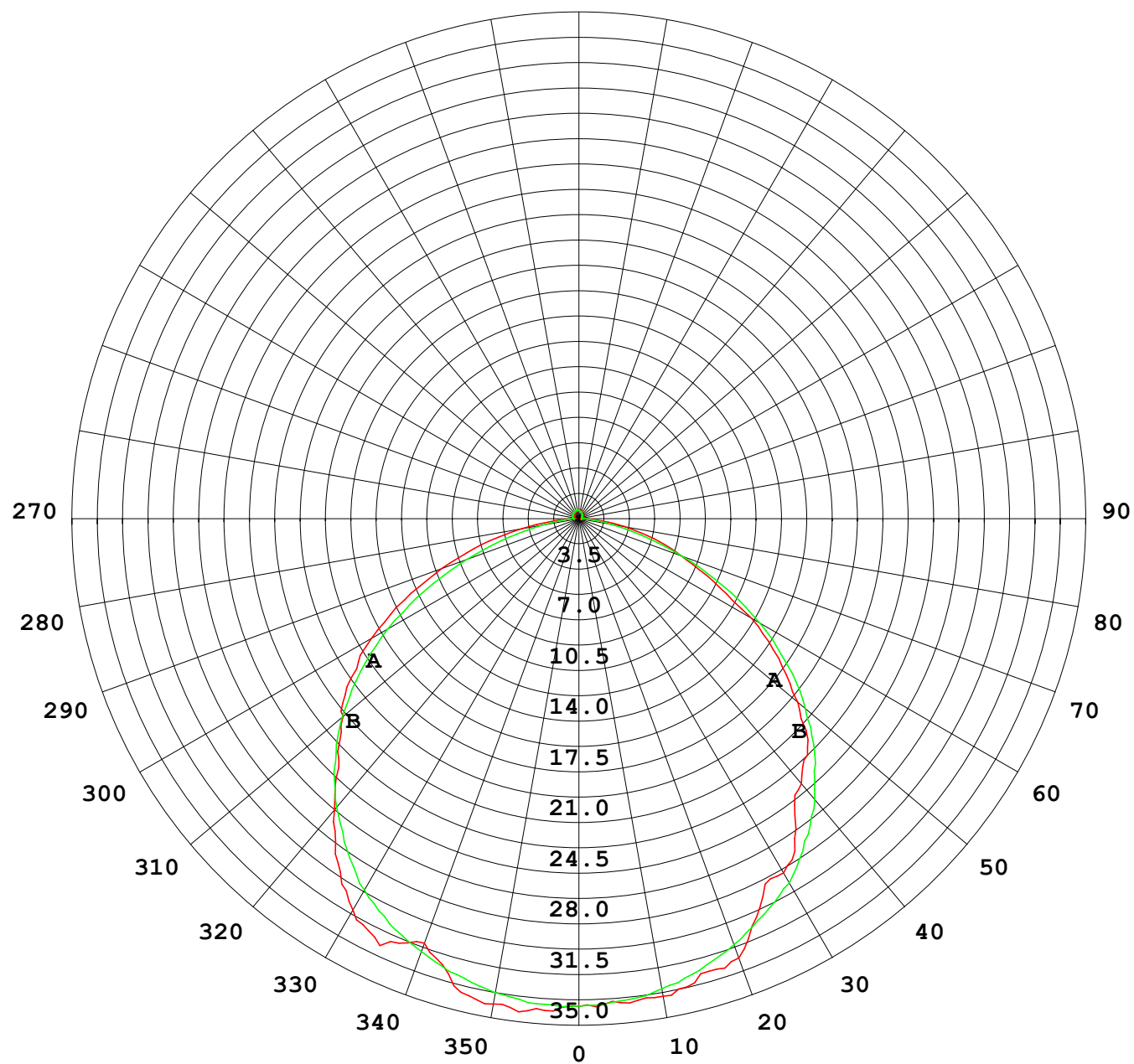
Photometric Data Table [cd]

33.0	27.86	29.92
36.0	26.69	28.59
39.0	25.47	27.16
42.0	24.98	25.43
45.0	24.30	23.61
48.0	23.07	21.90
51.0	21.68	19.92
54.0	19.58	18.64
57.0	17.69	17.20
60.0	15.57	15.65
63.0	13.14	14.11
66.0	10.86	12.24
69.0	9.059	10.45
72.0	7.072	8.484
75.0	5.536	6.564
78.0	4.053	4.832
81.0	2.654	3.252
84.0	1.478	1.805
87.0	0.6075	0.7646
90.0	0.1869	0.2501
93.0	0.1801	0.1663
96.0	0.1802	0.1593
99.0	0.1941	0.1593
102.0	0.2147	0.1593
105.0	0.2287	0.1593
108.0	0.2425	0.1801
111.0	0.2702	0.1870
114.0	0.2840	0.1870
117.0	0.2979	0.1939
120.0	0.3186	0.2077
123.0	0.3256	0.2423
126.0	0.3327	0.2769
129.0	0.3670	0.2770
132.0	0.3740	0.2840
135.0	0.3948	0.3047
138.0	0.4156	0.3323
141.0	0.4296	0.3876
144.0	0.4571	0.4017
147.0	0.4780	0.4017
150.0	0.4987	0.4017
153.0	0.5127	0.4293
156.0	0.5334	0.4433
159.0	0.5542	0.4917
162.0	0.5748	0.5055
165.0	0.5818	0.5056
168.0	0.6095	0.5263
171.0	0.6096	0.5332
174.0	0.6233	0.5539
177.0	0.6303	0.5610
180.0	0.6372	0.6164

C Range: 0 - 360DEG
C Interval: 30.0DEG
Test Speed: HIGH
Temperature: 25.3DEG
Operators: WFW
Test Date: 2023-01-06

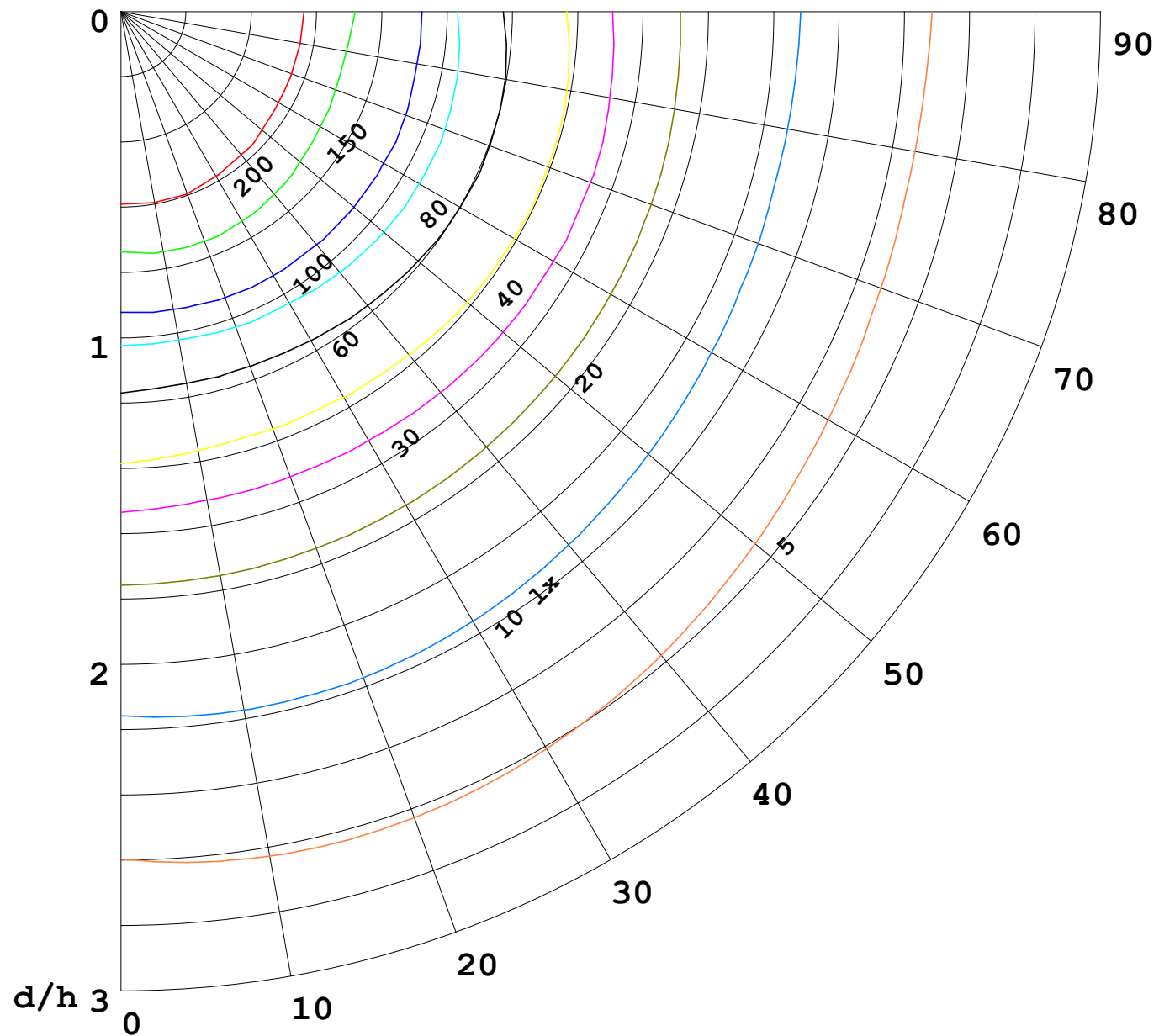
γ Range: 0 - 180DEG
γ Interval: 1.0DEG
Test System: EVERFINE GO-2000B_V1 SYSTEM V2.0.269
Humidity: 65.0%
Test Distance: 10.800m [K=1.0000]
Remarks:

I (cd)



1000 lm

$\kappa = 1$



F = 5000 lm
 K = 0.7
 Hcc = 0.0 m
 Hfc = 0.0 m
 Eave = 100 lx

	Pcc	Pw	Pfc
—	70	50	30
—	50	30	20

