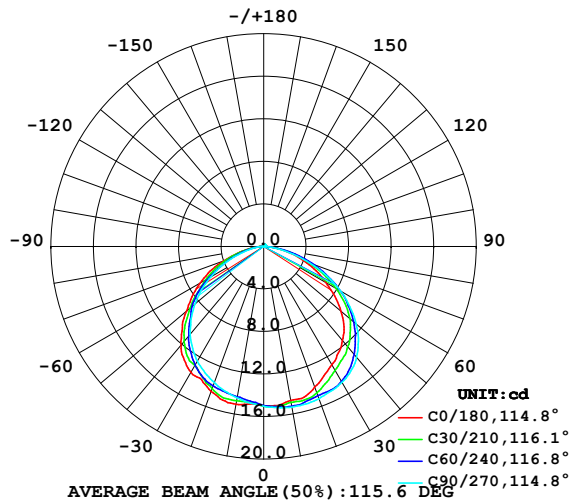


## LUMINAIRE PHOTOMETRIC TEST REPORT

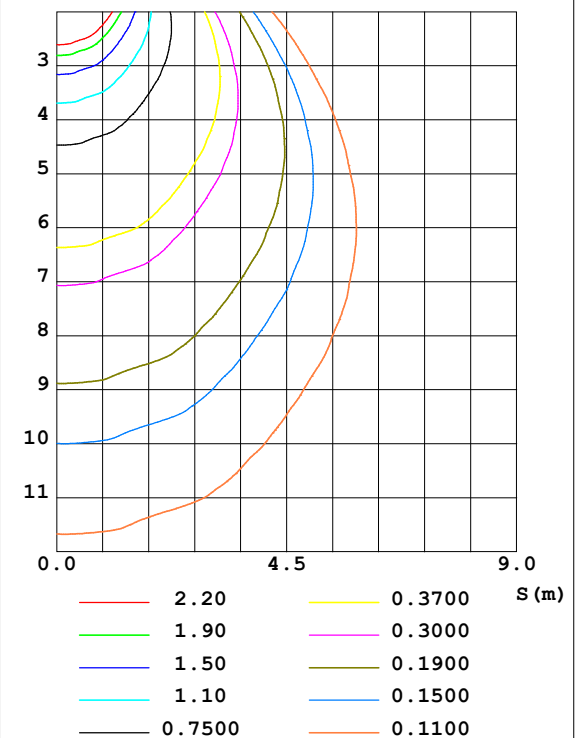
Test:U:24.00V I:0.3170A P:7.608W PF:1.000 Lamp Flux:45.8272x1 lm		
NAME: SP01-24V-5050-70-DMX3-RGB-B	TYPE: 硅胶	WEIGHT:
DIM.: 15MM*7MM	SPEC.:	SERIAL No.:202301008
MFR.: OLYMPIA	SUR.:1*0.015	PROTECTION ANGLE:

DATA OF LAMP		PHOTOMETRIC DATA				Eff: 6.02 lm/W
MODEL	5050	I <sub>max</sub> (cd)	15.42	S/MH (C0/180)	1.29	
NOMINAL POWER (W)	15	LOR (%)	100.0	S/MH (C90/270)	1.46	
RATED VOLTAGE (V)	24	TOTAL FLUX (lm)	45.827	η UP, DN (C0-180)	0.9, 53.1	
NOMINAL FLUX (lm)	45.8272	CIE CLASS	DIRECT	η UP, DN (C180-360)	0.6, 45.4	
LAMPS INSIDE	1	η up (%)	1.5	CIBSE SHR NOM	1.50	
TEST VOLTAGE (V)	24.0	η down (%)	98.5	CIBSE SHR MAX	1.50	

LUMINOUS INTENSITY DISTRIBUTION DIAGRAM



C0 PLANE ISOLUX DIAGRAM (UNIT:lx)



C Range: 0 - 360DEG  
C Interval: 30.0DEG  
Test Speed: HIGH  
Temperature: 25.3DEG  
Operators: WFW  
Test Date: 2023-01-06

γ Range: 0 - 180DEG  
γ Interval: 1.0DEG  
Test System: EVERFINE GO-2000B\_V1 SYSTEM V2.0.269  
Humidity: 65.0%  
Test Distance: 10.800m [K=1.0000]  
Remarks:

ZONAL FLUX DIAGRAM  
AND LUMINANCE LIMITATION CURVES

## ZONAL FLUX DIAGRAM:

$\gamma$	C0	C45	C90	C135	C180	C225	C270	C315	$\gamma$	$\Phi$ zone	$\Phi$ total	%lum, lamp
10	14.70	15.07	15.34	15.12	15.06	14.54	14.45	14.47	0- 10	1.421	1.421	3.1,3.1
20	14.06	14.80	15.24	15.21	14.51	14.09	13.61	13.69	10- 20	4.160	5.581	12.2,12.2
30	12.83	14.04	14.75	14.61	13.67	12.93	12.47	12.49	20- 30	6.454	12.03	26.3,26.3
40	11.54	12.78	13.61	13.33	12.12	11.32	10.77	10.81	30- 40	8.055	20.09	43.8,43.8
50	9.478	10.82	11.38	11.02	9.478	8.938	8.459	8.691	40- 50	8.466	28.55	62.3,62.3
60	6.748	8.072	8.322	7.920	6.909	6.166	5.743	6.184	50- 60	7.560	36.11	78.8,78.8
70	4.075	4.852	4.679	4.669	4.006	3.500	3.042	3.570	60- 70	5.491	41.61	90.8,90.8
80	1.595	1.812	1.439	1.763	1.466	1.285	1.006	1.323	70- 80	2.871	44.48	97.1,97.1
90	0.1182	0.1040	0.1177	0.0904	0.0069	0.0279	0.0625	0.0556	80- 90	0.6726	45.15	98.5,98.5
100	0.0831	0.0970	0.1524	0.0935	0.0069	0.0104	0.0554	0.0381	90-100	0.0683	45.22	98.7,98.7
110	0.0831	0.1074	0.1731	0.1039	0.0555	0.0519	0.0693	0.0519	100-110	0.0806	45.30	98.8,98.8
120	0.0831	0.1246	0.1801	0.1108	0.0831	0.0727	0.0762	0.0831	110-120	0.0908	45.39	99,99
130	0.0900	0.1384	0.1870	0.1281	0.1108	0.0866	0.0553	0.0935	120-130	0.0942	45.48	99.2,99.2
140	0.1108	0.1801	0.2008	0.1628	0.1455	0.1144	0.0762	0.1039	130-140	0.0951	45.58	99.5,99.5
150	0.1662	0.1870	0.2008	0.1662	0.1732	0.1489	0.1246	0.1420	140-150	0.0955	45.67	99.7,99.7
160	0.1801	0.1870	0.2008	0.1870	0.2008	0.1835	0.1870	0.1766	150-160	0.0819	45.76	99.8,99.8
170	0.1870	0.1870	0.2008	0.1870	0.2008	0.1835	0.1870	0.1905	160-170	0.0534	45.81	100,100
180	0.1870	0.1835	0.2008	0.1905	0.1870	0.1905	0.1870	0.1905	170-180	0.0180	45.83	100,100
DEG	LUMINOUS INTENSITY:cd									UNIT:lm		



LUMINANCE cd/(m2)		
G (DEG)	C0/180	C90/270
85	69	54
80	92	83
75	108	111
70	119	137
65	129	155
60	135	166
55	142	173
50	147	177
45	151	178

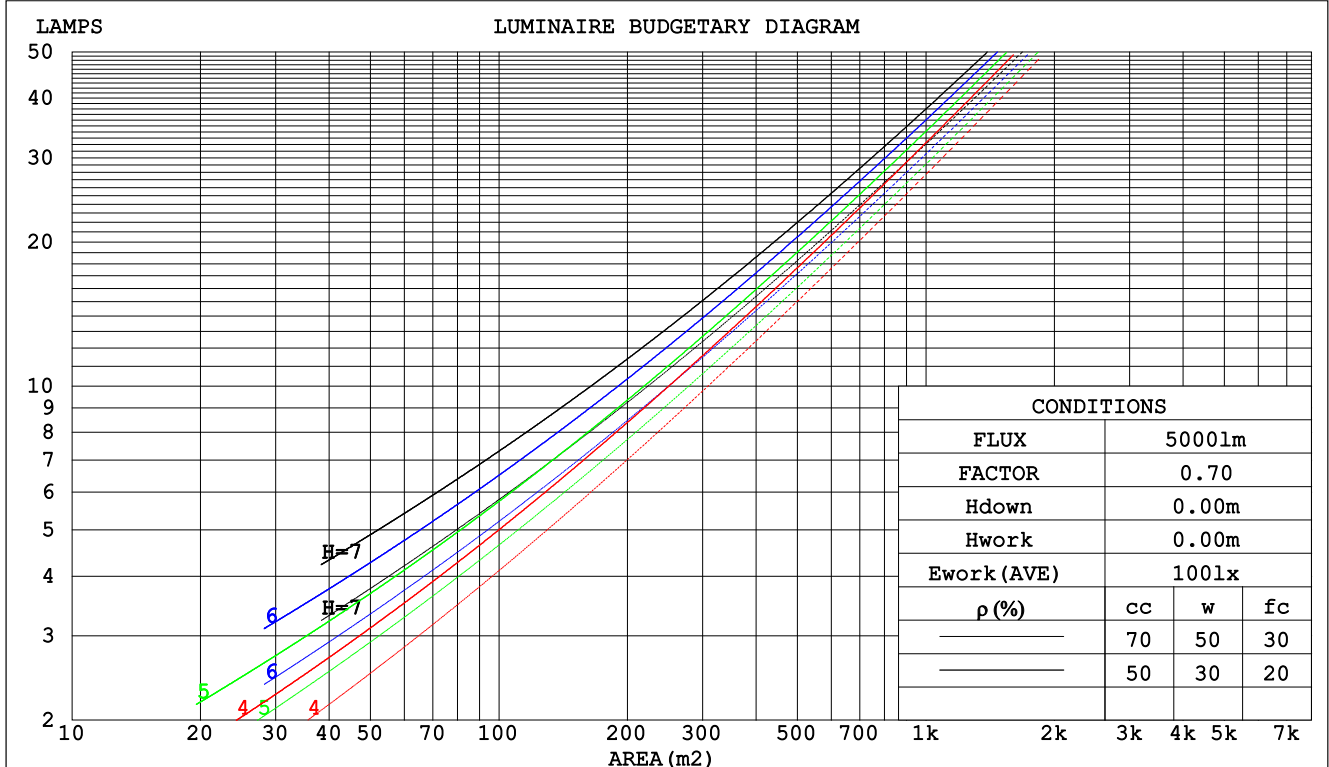
C Range: 0 - 360DEG  
C Interval: 30.0DEG  
Test Speed: HIGH  
Temperature:25.3DEG  
Operators:WFW  
Test Date:2023-01-06

$\gamma$  Range: 0 - 180DEG  
 $\gamma$  Interval: 1.0DEG  
Test System:EVERFINE GO-2000B\_V1 SYSTEM V2.0.269  
Humidity:65.0%  
Test Distance:10.800m [K=1.0000]  
Remarks:

## CU AND LUMINAIRE BUDGETARY ESTIMATE DIAGRAM

Test:U:24.00V I:0.3170A P:7.608W PF:1.000 Lamp Flux:45.8272x1 lm		
NAME: SP01-24V-5050-70-DMX3-RGB-B	TYPE: 硅胶	WEIGHT:
DIM.: 15MM*7MM	SPEC.:	SERIAL No.:202301008
MFR.: OLYMPIA	SUR.:1*0.015	PROTECTION ANGLE:

$\rho_{cc}$	80%			70%			50%			30%			10%			0
$\rho_w$	50%	30%	10%	50%	30%	10%	50%	30%	10%	50%	30%	10%	50%	30%	10%	0
$\rho_{fc}$	20%			20%			20%			20%			20%			0
RCR	RCR:Room Cavity Ratio			Coefficients of Utilization(CU)												
0.0	1.19	1.19	1.19	1.16	1.16	1.16	1.10	1.10	1.10	1.05	1.05	1.05	1.01	1.01	1.01	.99
1.0	1.04	.00	.96	1.01	.98	.94	.97	.94	.91	.93	.90	.88	.89	.87	.85	.83
2.0	.91	.84	.78	.89	.82	.77	.85	.80	.75	.81	.77	.73	.78	.74	.71	.69
3.0	.79	.71	.65	.78	.70	.64	.75	.68	.63	.72	.66	.62	.69	.64	.60	.58
4.0	.70	.61	.55	.69	.61	.54	.66	.59	.53	.64	.57	.53	.61	.56	.52	.49
5.0	.63	.54	.47	.61	.53	.47	.59	.52	.46	.57	.51	.45	.55	.49	.45	.43
6.0	.56	.47	.41	.55	.47	.41	.53	.46	.40	.52	.45	.40	.50	.44	.39	.37
7.0	.51	.42	.36	.50	.42	.36	.48	.41	.35	.47	.40	.35	.45	.39	.35	.33
8.0	.46	.38	.32	.46	.38	.32	.44	.37	.32	.43	.36	.31	.42	.36	.31	.29
9.0	.43	.34	.29	.42	.34	.29	.41	.33	.28	.39	.33	.28	.38	.32	.28	.26
10.0	.39	.31	.26	.39	.31	.26	.38	.31	.26	.36	.30	.26	.36	.30	.25	.24



C Range: 0 - 360DEG  
C Interval: 30.0DEG  
Test Speed: HIGH  
Temperature:25.3DEG  
Operators:WFW  
Test Date:2023-01-06

$\gamma$  Range: 0 - 180DEG  
 $\gamma$  Interval: 1.0DEG  
Test System:EVERFINE GO-2000B\_V1 SYSTEM V2.0.269  
Humidity:65.0%  
Test Distance:10.800m [K=1.0000]  
Remarks:

## WEC AND CCEC

Test:U:24.00V I:0.3170A P:7.608W PF:1.000 Lamp Flux:45.8272x1 lm					
NAME: SP01-24V-5050-70-DMX3-RGB-B			TYPE: 硅胶		WEIGHT:
DIM.: 15MM*7MM			SPEC.:		SERIAL No.:202301008
MFR.: OLYMPIA			SUR.:1*0.015		PROTECTION ANGLE:

pcc	80%			70%			50%			30%			10%			0	
pw	50%	30%	10%	50%	30%	10%	50%	30%	10%	50%	30%	10%	50%	30%	10%	0	
pfc	20%			20%			20%			20%			20%			0	
RCR	RCR:Room Cavity Ratio						Wall Exitance Coefficients(WEC)										
0.0																	
1.0	.303	.172	.055	.295	.168	.054	.281	.161	.052	.268	.155	.050	.256	.149	.048		
2.0	.287	.157	.048	.281	.155	.048	.268	.149	.046	.257	.144	.045	.246	.139	.044		
3.0	.267	.142	.043	.261	.140	.042	.250	.136	.041	.240	.132	.040	.231	.128	.040		
4.0	.247	.129	.038	.242	.127	.037	.232	.123	.037	.223	.120	.036	.215	.117	.036		
5.0	.229	.117	.034	.225	.115	.034	.216	.112	.033	.208	.110	.033	.200	.107	.032		
6.0	.213	.107	.031	.209	.105	.030	.201	.103	.030	.194	.101	.030	.187	.098	.029		
7.0	.198	.098	.028	.195	.097	.028	.188	.095	.027	.181	.093	.027	.175	.091	.027		
8.0	.185	.091	.025	.182	.090	.025	.176	.088	.025	.170	.086	.025	.164	.084	.025		
9.0	.174	.084	.023	.171	.083	.023	.165	.082	.023	.160	.080	.023	.155	.079	.023		
10.0	.164	.078	.022	.161	.078	.022	.156	.076	.021	.151	.075	.021	.146	.074	.021		

pcc	80%			70%			50%			30%			10%			0
pw	50%	30%	10%	50%	30%	10%	50%	30%	10%	50%	30%	10%	50%	30%	10%	0
pfc	20%			20%			20%			20%			20%			0
RCR	RCR:Room Cavity Ratio						Ceiling Cavity Exitance Coefficients(CCEC)									
0.0	.202	.202	.202	.172	.172	.172	.118	.118	.118	.068	.068	.068	.022	.022	.022	
1.0	.191	.168	.146	.164	.144	.126	.112	.099	.087	.064	.057	.051	.021	.018	.016	
2.0	.183	.143	.110	.157	.123	.095	.107	.085	.066	.062	.050	.039	.020	.016	.013	
3.0	.175	.126	.086	.150	.109	.075	.103	.075	.052	.060	.044	.031	.019	.014	.010	
4.0	.168	.112	.070	.144	.097	.061	.099	.068	.043	.057	.040	.025	.018	.013	.008	
5.0	.161	.102	.059	.138	.088	.051	.095	.062	.036	.055	.036	.021	.018	.012	.007	
6.0	.154	.094	.051	.132	.081	.044	.091	.057	.031	.053	.033	.019	.017	.011	.006	
7.0	.147	.087	.045	.126	.075	.039	.087	.053	.028	.051	.031	.017	.016	.010	.005	
8.0	.141	.081	.040	.121	.070	.035	.084	.049	.025	.049	.029	.015	.016	.010	.005	
9.0	.135	.076	.037	.116	.066	.032	.080	.047	.023	.047	.027	.014	.015	.009	.005	
10.0	.129	.072	.034	.111	.063	.030	.077	.044	.021	.045	.026	.013	.015	.009	.004	

C Range: 0 - 360DEG  
 C Interval: 30.0DEG  
 Test Speed: HIGH  
 Temperature:25.3DEG  
 Operators:WFW  
 Test Date:2023-01-06

γ Range: 0 - 180DEG  
 γ Interval: 1.0DEG  
 Test System:EVERFINE GO-2000B\_V1 SYSTEM V2.0.269  
 Humidity:65.0%  
 Test Distance:10.800m [K=1.0000]  
 Remarks:

## Uncorrected UGR Table

Test:U:24.00V I:0.3170A P:7.608W PF:1.000 Lamp Flux:45.8272x1 lm										
NAME: SP01-24V-5050-70-DMX3-RGB-B					TYPE:硅胶			WEIGHT:		
DIM.: 15MM*7MM					SPEC.:			SERIAL No.:202301008		
MFR.: OLYMPIA					SUR.:1*0.015			PROTECTION ANGLE:		
ceiling/cavity	0.7	0.7	0.5	0.5	0.3	0.7	0.7	0.5	0.5	0.3
walls	0.5	0.3	0.5	0.3	0.3	0.5	0.3	0.5	0.3	0.3
working plane	0.2	0.2	0.2	0.2	0.2	0.2	0.2	0.2	0.2	0.2
Room dimensions	Viewed crosswise					Viewed endwise				
x = 2H y = 2H	6.5	8.0	6.8	8.2	8.5	7.2	8.7	7.5	9.0	9.2
3H	7.8	9.2	8.2	9.5	9.8	8.6	10.0	8.9	10.3	10.5
4H	8.3	9.7	8.7	9.9	10.2	9.1	10.4	9.4	10.7	11.0
6H	8.7	9.9	9.0	10.2	10.5	9.3	10.5	9.7	10.8	11.1
8H	8.7	9.9	9.1	10.2	10.6	9.3	10.5	9.7	10.8	11.2
12H	8.8	9.9	9.1	10.2	10.6	9.3	10.5	9.7	10.8	11.1
4H 2H	7.2	8.5	7.6	8.8	9.1	7.8	9.1	8.1	9.4	9.7
3H	8.7	9.9	9.1	10.2	10.6	9.4	10.5	9.8	10.9	11.2
4H	9.4	10.4	9.8	10.8	11.1	10.0	11.0	10.4	11.4	11.7
6H	9.8	10.7	10.2	11.1	11.5	10.3	11.2	10.7	11.6	12.0
8H	9.9	10.8	10.3	11.2	11.6	10.4	11.2	10.8	11.6	12.1
12H	10.0	10.7	10.4	11.2	11.6	10.4	11.2	10.9	11.6	12.0
8H 4H	9.6	10.5	10.1	10.9	11.3	10.2	11.0	10.6	11.4	11.9
6H	10.2	10.9	10.7	11.3	11.8	10.7	11.4	11.1	11.8	12.3
8H	10.4	11.0	10.9	11.5	11.9	10.8	11.4	11.3	11.9	12.4
12H	10.5	11.0	11.0	11.5	12.0	10.9	11.4	11.4	11.9	12.4
12H 4H	9.7	10.4	10.1	10.9	11.3	10.2	11.0	10.6	11.4	11.8
6H	10.2	10.9	10.7	11.3	11.8	10.7	11.3	11.2	11.8	12.3
8H	10.5	11.0	11.0	11.5	12.0	10.9	11.4	11.4	11.9	12.4
Variations with the observer position at spacings:										
S = 1.0H	+ 0.2 / - 0.2					+ 0.2 / - 0.2				
1.5H	+ 0.3 / - 0.5					+ 0.2 / - 0.4				
2.0H	+ 0.2 / - 0.5					+ 0.2 / - 0.3				

CIE Pub.117 Corrected 45.83 lm Total Lamp Luminous Flux. (8log(F/F0) = -10.7)

C Range: 0 - 360DEG  
 C Interval: 30.0DEG  
 Test Speed: HIGH  
 Temperature:25.3DEG  
 Operators:WFW  
 Test Date:2023-01-06

γ Range: 0 - 180DEG  
 γ Interval: 1.0DEG  
 Test System:EVERFINE GO-2000B\_V1 SYSTEM V2.0.269  
 Humidity:65.0%  
 Test Distance:10.800m [K=1.0000]  
 Remarks:

## UTILIZATION FACTORS TABLE

Test:U:24.00V I:0.3170A P:7.608W PF:1.000 Lamp Flux:45.8272x1 lm		
NAME: SP01-24V-5050-70-DMX3-RGB-B	TYPE: 硅胶	WEIGHT:
DIM.: 15MM*7MM	SPEC.:	SERIAL No.:202301008
MFR.: OLYMPIA	SUR.:1*0.015	PROTECTION ANGLE:

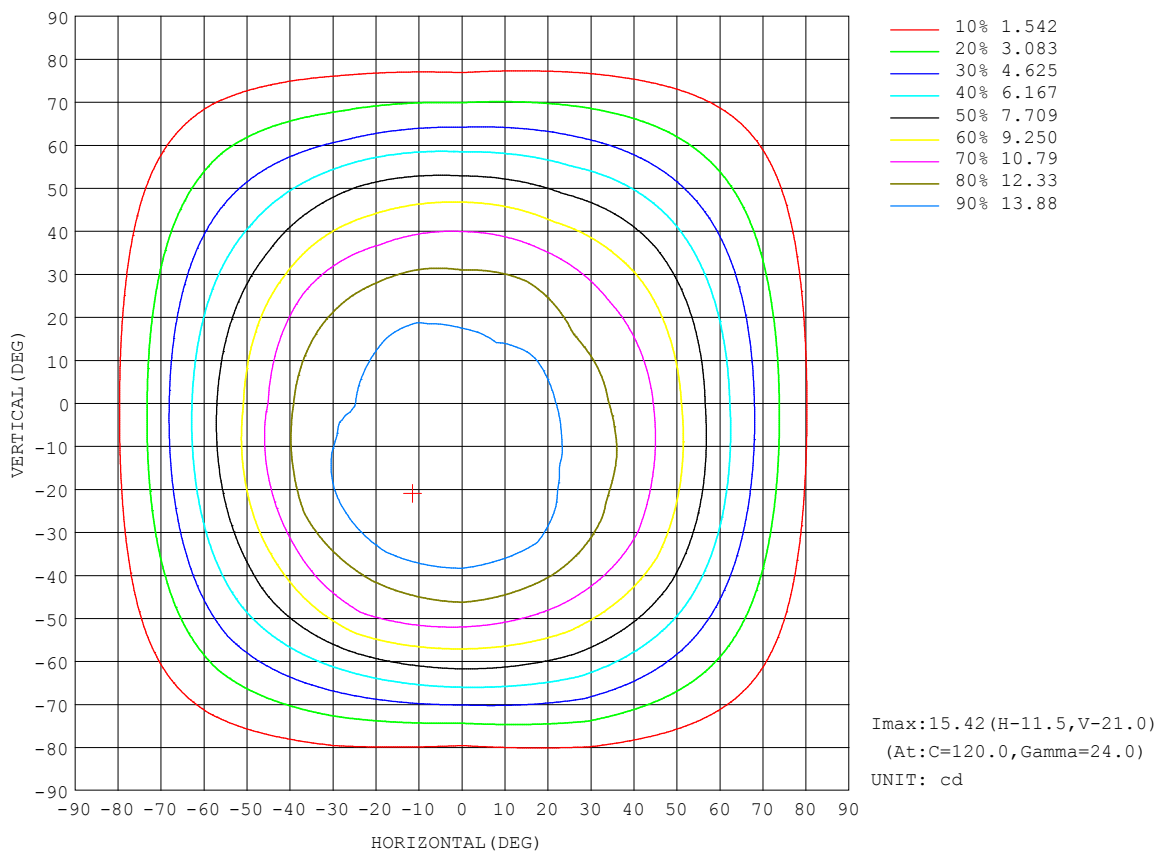
REFLECTANCE										
Ceiling	0.8	0.8	0.8	0.7	0.7	0.7	0.5	0.5	0.5	0
Walls	0.7	0.5	0.3	0.7	0.5	0.3	0.7	0.5	0.3	0
Working plane	0.2	0.2	0.2	0.2	0.2	0.2	0.2	0.2	0.2	0
ROOM INDEX	UTILIZATION FACTORS (PERCENT) $k(RI) \times RCR = 5$									
$k = 0.60$	57	45	38	56	45	38	55	44	38	31
0.80	67	55	48	66	55	48	64	54	47	40
1.00	76	65	57	74	64	57	72	65	56	49
1.25	83	72	65	81	72	65	78	70	64	56
1.50	88	78	71	86	77	71	83	75	69	62
2.00	95	86	80	93	85	79	89	83	77	69
2.50	99	91	85	97	90	84	93	87	82	73
3.00	102	95	90	100	94	89	96	90	86	77
4.00	106	100	96	104	99	94	99	95	91	82
5.00	108	104	100	106	102	98	101	98	95	85
ROOM INDEX	UF(total)									Direct
According to DIN EN 13032-2 2004			Suspended					SHRNM = 1.25		

C Range: 0 - 360DEG  
 C Interval: 30.0DEG  
 Test Speed: HIGH  
 Temperature:25.3DEG  
 Operators:WFW  
 Test Date:2023-01-06

$\gamma$  Range: 0 - 180DEG  
 $\gamma$  Interval: 1.0DEG  
 Test System:EVERFINE GO-2000B\_V1 SYSTEM V2.0.269  
 Humidity:65.0%  
 Test Distance:10.800m [K=1.0000]  
 Remarks:

## ISOCANDELA DIAGRAM

Test:U:24.00V I:0.3170A P:7.608W PF:1.000 Lamp Flux:45.8272x1 lm		
NAME: SP01-24V-5050-70-DMX3-RGB-B	TYPE: 硅胶	WEIGHT:
DIM.: 15MM*7MM	SPEC.:	SERIAL No.:202301008
MFR.: OLYMPIA	SUR.:1*0.015	PROTECTION ANGLE:

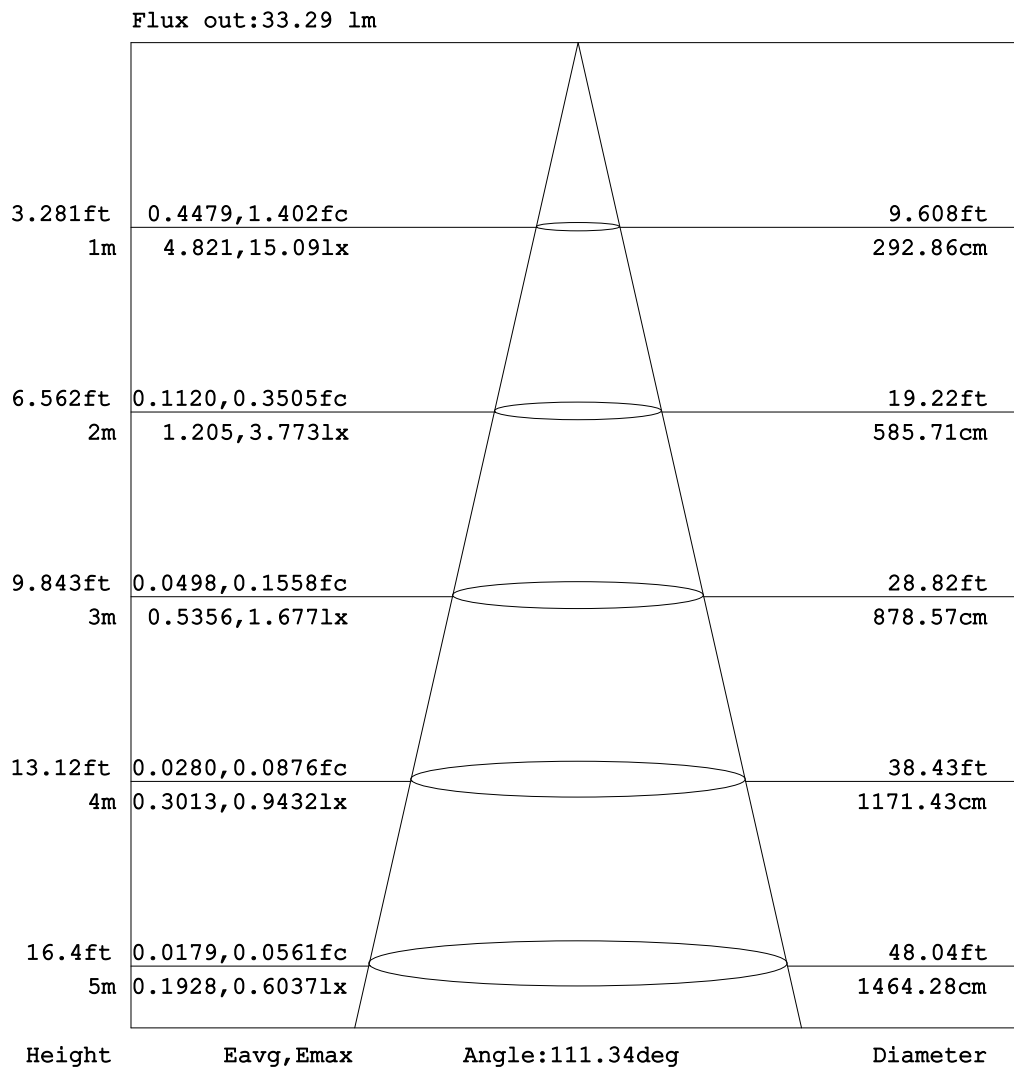


C Range: 0 - 360DEG  
C Interval: 30.0DEG  
Test Speed: HIGH  
Temperature:25.3DEG  
Operators:WFW  
Test Date:2023-01-06

$\gamma$  Range: 0 - 180DEG  
 $\gamma$  Interval: 1.0DEG  
Test System:EVERFINE GO-2000B\_V1 SYSTEM V2.0.269  
Humidity:65.0%  
Test Distance:10.800m [K=1.0000]  
Remarks:

## AAI Figure

Test:U:24.00V I:0.3170A P:7.608W PF:1.000 Lamp Flux:45.8272x1 lm		
NAME: SP01-24V-5050-70-DMX3-RGB-B	TYPE: 硅胶	WEIGHT:
DIM.: 15MM*7MM	SPEC.:	SERIAL No.:202301008
MFR.: OLYMPIA	SUR.:1*0.015	PROTECTION ANGLE:



Note: The Curves indicate the illuminated area and the average illumination when the luminaire is at different distance.

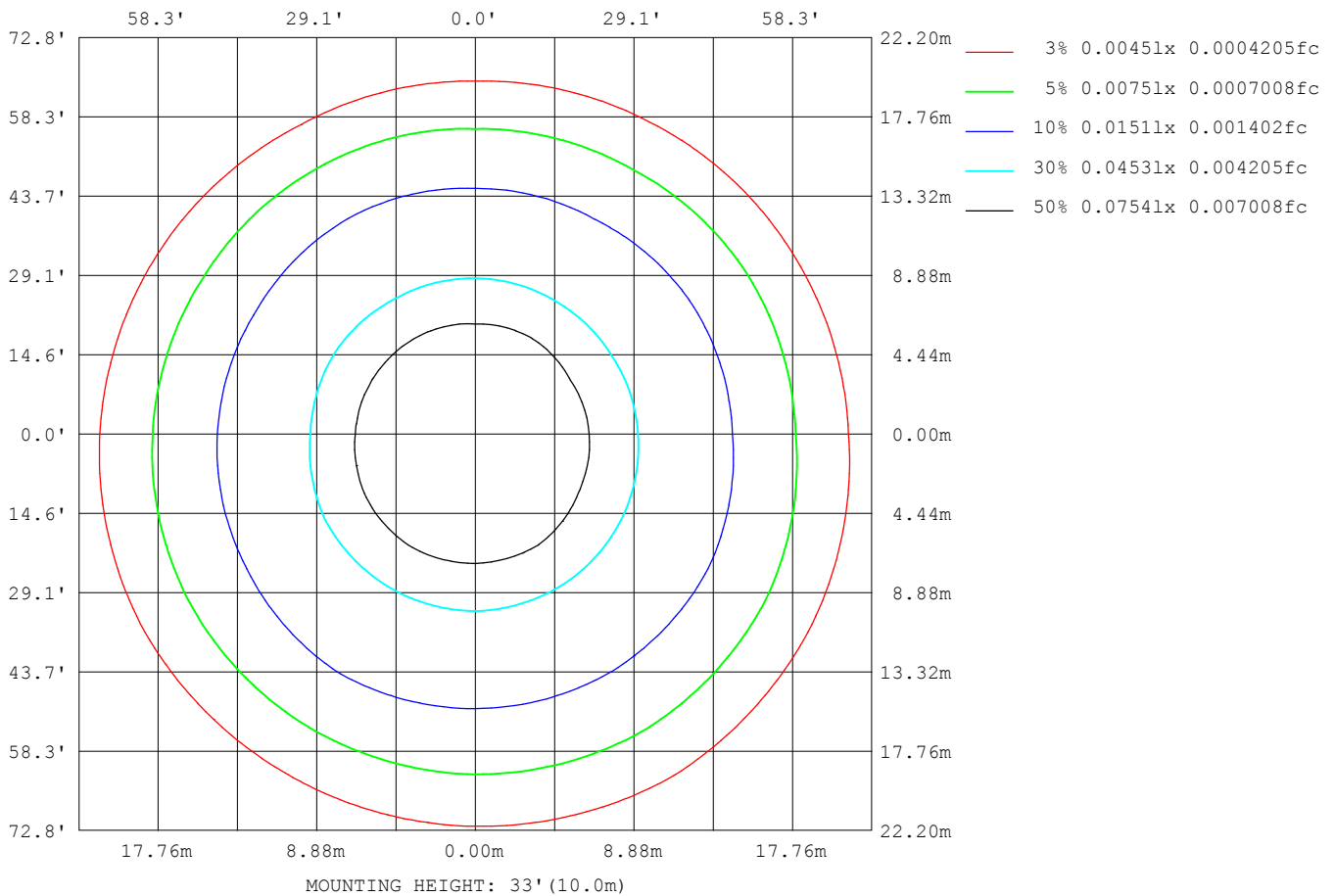
C Range: 0 - 360DEG  
C Interval: 30.0DEG  
Test Speed: HIGH  
Temperature: 25.3DEG  
Operators: WFW  
Test Date: 2023-01-06

γ Range: 0 - 180DEG  
γ Interval: 1.0DEG  
Test System: EVERFINE GO-2000B\_V1 SYSTEM V2.0.269  
Humidity: 65.0%  
Test Distance: 10.800m [K=1.0000]  
Remarks:



## ISOLUX DIAGRAM

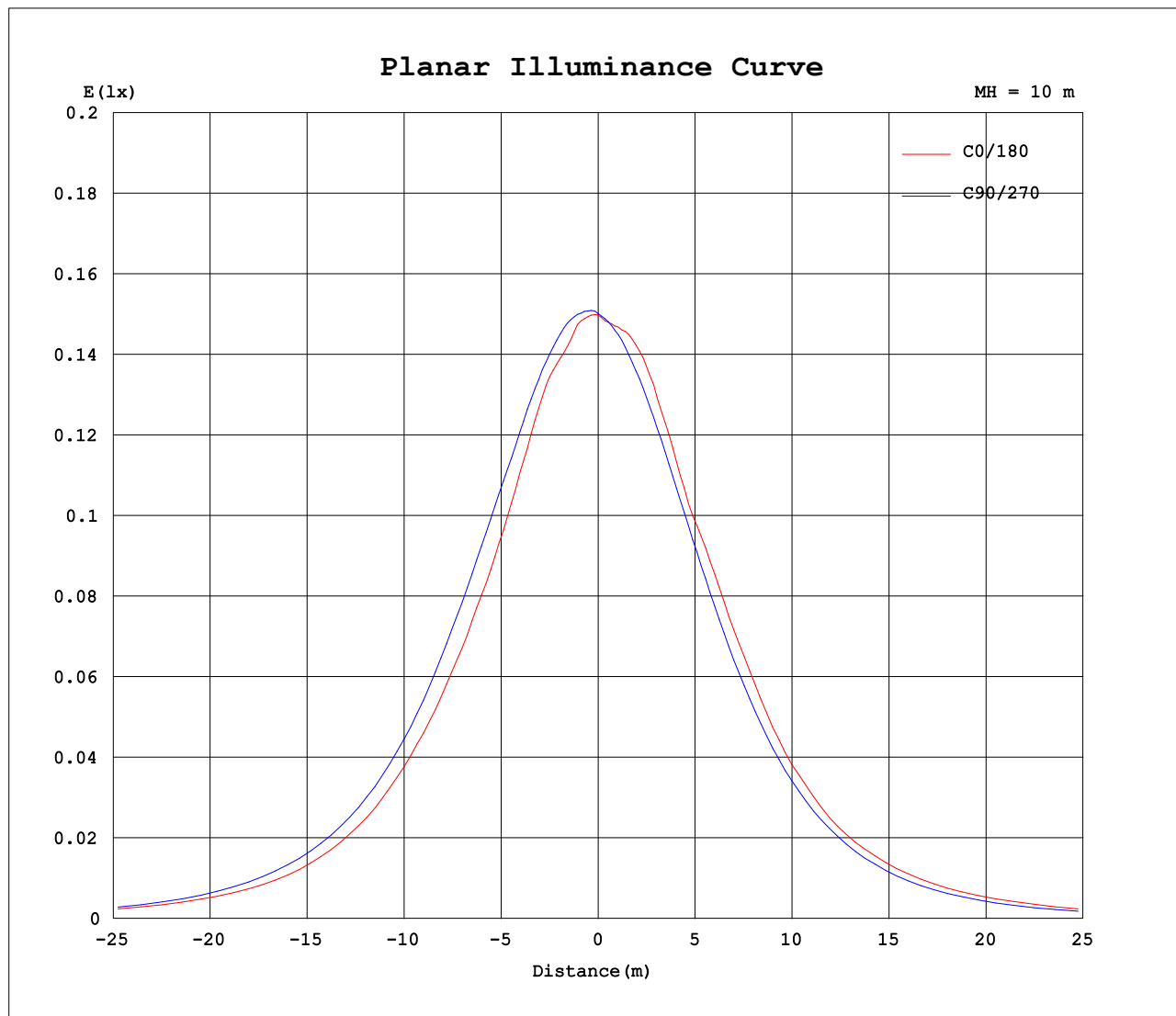
Test:U:24.00V I:0.3170A P:7.608W PF:1.000 Lamp Flux:45.8272x1 lm		
NAME: SP01-24V-5050-70-DMX3-RGB-B	TYPE: 硅胶	WEIGHT:
DIM.: 15MM*7MM	SPEC.:	SERIAL No.:202301008
MFR.: OLYMPIA	SUR.:1*0.015	PROTECTION ANGLE:



C Range: 0 - 360DEG  
C Interval: 30.0DEG  
Test Speed: HIGH  
Temperature:25.3DEG  
Operators:WFW  
Test Date:2023-01-06

$\gamma$  Range: 0 - 180DEG  
 $\gamma$  Interval: 1.0DEG  
Test System:EVERFINE GO-2000B\_V1 SYSTEM V2.0.269  
Humidity:65.0%  
Test Distance:10.800m [K=1.0000]  
Remarks:

## Planar Illuminance Curve



C Range: 0 - 360DEG  
C Interval: 30.0DEG  
Test Speed: HIGH  
Temperature: 25.3DEG  
Operators: WFW  
Test Date: 2023-01-06

$\gamma$  Range: 0 - 180DEG  
 $\gamma$  Interval: 1.0DEG  
Test System: EVERFINE GO-2000B\_V1 SYSTEM V2.0.269  
Humidity: 65.0%  
Test Distance: 10.800m [K=1.0000]  
Remarks:

## LUMINOUS DISTRIBUTION INTENSITY DATA

Test:U:24.00V I:0.3170A P:7.608W PF:1.000 Lamp Flux:45.8272x1 lm		
NAME: SP01-24V-5050-70-DMX3-RGB-B	TYPE: 硅胶	WEIGHT:
DIM.: 15MM*7MM	SPEC.:	SERIAL No.:202301008
MFR.: OLYMPIA	SUR.:1*0.015	PROTECTION ANGLE:

Table--1

UNIT: cd

C (DEG) γ (DEG)	0	30	60	90	120	150	180	210	240	270	300	330						
0	15.0	15.0	15.0	15.0	14.9	14.9	15.0	15.0	15.0	15.0	14.9	14.9						
5	15.0	15.1	15.1	15.2	15.0	14.9	14.9	14.7	14.6	14.8	14.7	14.9						
10	14.7	14.9	15.3	15.3	15.1	15.1	15.1	14.7	14.4	14.4	14.5	14.5						
15	14.7	14.9	15.1	15.3	15.3	15.3	15.0	14.8	14.1	14.1	14.0	14.3						
20	14.1	14.7	14.9	15.2	15.4	15.0	14.5	14.2	13.9	13.6	13.5	13.9						
25	13.4	14.1	14.9	15.0	15.4	14.5	13.8	13.6	13.6	13.1	13.2	13.1						
30	12.8	13.4	14.6	14.8	15.1	14.1	13.7	13.0	12.9	12.5	12.6	12.4						
35	12.2	13.0	14.1	14.3	14.4	13.9	13.0	12.6	12.0	11.7	11.8	11.7						
40	11.5	12.3	13.3	13.6	13.5	13.1	12.1	11.7	11.0	10.8	10.7	10.9						
45	10.7	11.5	12.2	12.6	12.4	12.0	10.8	10.5	9.79	9.68	9.55	9.99						
50	9.48	10.6	11.0	11.4	11.5	10.5	9.48	9.05	8.82	8.46	8.38	9.00						
55	8.16	9.33	9.72	9.90	10.0	8.97	8.25	7.61	7.53	7.16	7.17	7.78						
60	6.75	7.82	8.32	8.32	8.25	7.59	6.91	6.32	6.01	5.74	5.93	6.44						
65	5.47	6.22	6.69	6.56	6.33	6.11	5.62	5.04	4.51	4.39	4.67	5.05						
70	4.08	4.63	5.07	4.68	4.68	4.66	4.01	3.76	3.25	3.04	3.43	3.71						
75	2.79	3.15	3.43	2.87	3.11	3.11	2.61	2.52	2.09	1.89	2.26	2.50						
80	1.60	1.74	1.89	1.44	1.78	1.74	1.47	1.41	1.15	1.01	1.22	1.43						
85	0.60	0.61	0.66	0.47	0.70	0.68	0.53	0.54	0.39	0.37	0.39	0.52						
90	0.12	0.09	0.12	0.12	0.10	0.08	0.01	0.06	0.00	0.06	0.05	0.06						
95	0.08	0.09	0.10	0.12	0.09	0.08	0.01	0.02	0.00	0.06	0.05	0.03						
100	0.08	0.10	0.10	0.15	0.09	0.10	0.01	0.02	0.00	0.06	0.06	0.01						
105	0.08	0.11	0.10	0.17	0.09	0.11	0.04	0.02	0.08	0.06	0.08	0.01						
110	0.08	0.12	0.10	0.17	0.09	0.12	0.06	0.02	0.08	0.07	0.08	0.02						
115	0.08	0.12	0.10	0.17	0.09	0.12	0.07	0.02	0.09	0.08	0.10	0.04						
120	0.08	0.15	0.10	0.18	0.09	0.13	0.08	0.04	0.10	0.08	0.11	0.06						
125	0.09	0.15	0.10	0.19	0.09	0.13	0.10	0.06	0.12	0.08	0.11	0.06						
130	0.09	0.16	0.12	0.19	0.10	0.16	0.11	0.06	0.12	0.06	0.13	0.06						
135	0.10	0.18	0.12	0.19	0.13	0.17	0.11	0.06	0.14	0.06	0.14	0.06						
140	0.11	0.19	0.17	0.20	0.15	0.17	0.15	0.08	0.15	0.08	0.14	0.07						
145	0.16	0.19	0.19	0.20	0.15	0.17	0.16	0.10	0.17	0.10	0.17	0.09						
150	0.17	0.19	0.18	0.20	0.16	0.17	0.17	0.11	0.19	0.12	0.19	0.10						
155	0.18	0.19	0.18	0.20	0.17	0.20	0.19	0.16	0.19	0.17	0.19	0.13						
160	0.18	0.19	0.18	0.20	0.18	0.19	0.20	0.17	0.19	0.19	0.19	0.16						
165	0.19	0.19	0.18	0.20	0.18	0.19	0.20	0.17	0.19	0.19	0.19	0.18						
170	0.19	0.19	0.18	0.20	0.18	0.19	0.20	0.17	0.19	0.19	0.19	0.19						
175	0.19	0.19	0.18	0.20	0.18	0.19	0.20	0.17	0.19	0.19	0.19	0.19						
180	0.19	0.19	0.18	0.20	0.19	0.19	0.19	0.19	0.19	0.19	0.19	0.19						

C Range: 0 - 360DEG  
C Interval: 30.0DEG  
Test Speed: HIGH  
Temperature:25.3DEG  
Operators:WFW  
Test Date:2023-01-06

γ Range: 0 - 180DEG  
γ Interval: 1.0DEG  
Test System:EVERFINE GO-2000B\_V1 SYSTEM V2.0.269  
Humidity:65.0%  
Test Distance:10.800m [K=1.0000]  
Remarks:

Photometric Data Table [cd]

G/C	0.0	30.0	60.0	90.0	120.0	150.0	180.0	210.0	240.0	270.0
0.0	14.98	15.02	14.95	15.02	14.93	14.92	14.98	15.02	14.95	15.02
3.0	15.00	15.08	15.07	15.14	14.95	14.90	14.86	14.79	14.69	14.88
6.0	14.99	15.04	15.16	15.24	14.95	14.94	14.92	14.72	14.55	14.73
9.0	14.74	14.89	15.24	15.34	15.05	15.11	15.04	14.72	14.37	14.52
12.0	14.71	14.90	15.26	15.34	15.18	15.29	15.06	14.75	14.29	14.32
15.0	14.69	14.93	15.13	15.34	15.25	15.30	14.95	14.75	14.15	14.08
18.0	14.38	14.83	15.00	15.29	15.33	15.16	14.66	14.48	14.05	13.83
21.0	13.96	14.54	14.93	15.17	15.42	14.86	14.38	14.05	13.90	13.51
24.0	13.57	14.17	14.92	15.02	15.42	14.66	14.00	13.74	13.65	13.21
27.0	13.19	13.80	14.88	14.92	15.29	14.32	13.78	13.32	13.33	12.86
30.0	12.83	13.44	14.64	14.75	15.09	14.13	13.67	12.95	12.90	12.47
33.0	12.54	13.12	14.36	14.51	14.66	14.09	13.34	12.83	12.37	12.02
36.0	12.15	12.82	13.95	14.20	14.28	13.77	12.89	12.39	11.83	11.51
39.0	11.69	12.45	13.42	13.78	13.76	13.32	12.37	11.84	11.25	10.96
42.0	11.24	12.06	12.85	13.23	13.06	12.71	11.58	11.22	10.53	10.32
45.0	10.68	11.52	12.20	12.62	12.42	11.96	10.81	10.47	9.791	9.677
48.0	10.02	11.00	11.53	11.92	11.89	11.07	10.11	9.581	9.189	8.929
51.0	9.262	10.34	10.79	11.09	11.27	10.26	9.195	8.778	8.599	8.203
54.0	8.453	9.618	10.00	10.21	10.37	9.326	8.495	7.954	7.809	7.399
57.0	7.560	8.731	9.235	9.292	9.354	8.357	7.706	6.998	6.923	6.568
60.0	6.748	7.823	8.321	8.322	8.246	7.595	6.909	6.325	6.008	5.743
63.0	5.987	6.860	7.345	7.282	6.979	6.701	6.105	5.536	5.066	4.948
66.0	5.184	5.905	6.382	6.182	5.995	5.822	5.329	4.788	4.215	4.116
69.0	4.339	4.929	5.399	5.066	5.031	4.956	4.325	4.019	3.481	3.306
72.0	3.550	4.035	4.409	3.930	4.007	4.062	3.418	3.271	2.754	2.551
75.0	2.787	3.149	3.425	2.872	3.106	3.107	2.608	2.516	2.090	1.893
78.0	2.066	2.256	2.455	1.951	2.275	2.235	1.902	1.816	1.515	1.331
81.0	1.374	1.480	1.603	1.196	1.540	1.501	1.258	1.227	0.9817	0.8462
84.0	0.7643	0.8153	0.8685	0.6219	0.8889	0.8640	0.6975	0.6803	0.5316	0.4651
87.0	0.3270	0.2831	0.3273	0.2418	0.3964	0.3797	0.2553	0.2920	0.1861	0.2085
90.0	0.1182	0.0900	0.1180	0.1177	0.1046	0.0762	0.0069	0.0558	0	0.0625
93.0	0.0833	0.0900	0.1039	0.1177	0.0900	0.0762	0.0069	0.0208	0	0.0554
96.0	0.0831	0.0901	0.0970	0.1316	0.0900	0.0831	0.0069	0.0208	0	0.0554
99.0	0.0831	0.0970	0.0970	0.1386	0.0900	0.0970	0.0069	0.0208	0	0.0554
102.0	0.0831	0.0970	0.0970	0.1593	0.0900	0.1108	0.0139	0.0208	0.0007	0.0554
105.0	0.0831	0.1108	0.0970	0.1731	0.0900	0.1108	0.0416	0.0208	0.0762	0.0554
108.0	0.0831	0.1177	0.0970	0.1731	0.0900	0.1109	0.0486	0.0208	0.0763	0.0693
111.0	0.0831	0.1177	0.0970	0.1731	0.0900	0.1247	0.0623	0.0208	0.0831	0.0693
114.0	0.0831	0.1177	0.0970	0.1731	0.0900	0.1247	0.0761	0.0208	0.0900	0.0761
117.0	0.0831	0.1247	0.0970	0.1732	0.0900	0.1316	0.0762	0.0482	0.0970	0.0762
120.0	0.0831	0.1523	0.0970	0.1801	0.0900	0.1316	0.0831	0.0416	0.1039	0.0762
123.0	0.0831	0.1455	0.0970	0.1870	0.0900	0.1316	0.0901	0.0554	0.1177	0.0762
126.0	0.0900	0.1593	0.0970	0.1870	0.0900	0.1316	0.1039	0.0554	0.1177	0.0831
129.0	0.0900	0.1593	0.1039	0.1870	0.0970	0.1387	0.1108	0.0554	0.1177	0.0485
132.0	0.0969	0.1594	0.1108	0.1870	0.1039	0.1594	0.1108	0.0554	0.1317	0.0554
135.0	0.0970	0.1801	0.1246	0.1871	0.1315	0.1662	0.1108	0.0623	0.1385	0.0623
138.0	0.1108	0.1870	0.1454	0.2077	0.1524	0.1731	0.1386	0.0693	0.1385	0.0693
141.0	0.1177	0.1939	0.1731	0.2008	0.1524	0.1731	0.1524	0.0762	0.1662	0.0899
144.0	0.1592	0.1939	0.1731	0.2008	0.1524	0.1731	0.1661	0.0900	0.1731	0.0900
147.0	0.1593	0.1939	0.1801	0.2008	0.1593	0.1731	0.1662	0.0970	0.1801	0.1108
150.0	0.1662	0.1939	0.1801	0.2008	0.1593	0.1731	0.1732	0.1108	0.1871	0.1246
153.0	0.1801	0.1939	0.1801	0.2008	0.1662	0.1523	0.1802	0.1522	0.1939	0.1524
156.0	0.1801	0.1939	0.1801	0.2008	0.1731	0.1939	0.2008	0.1593	0.1939	0.1800
159.0	0.1801	0.1939	0.1801	0.2008	0.1801	0.1939	0.2008	0.1731	0.1939	0.1869
162.0	0.1869	0.1939	0.1801	0.2008	0.1801	0.1939	0.2008	0.1731	0.1939	0.1870
165.0	0.1870	0.1939	0.1801	0.2008	0.1801	0.1939	0.2008	0.1731	0.1939	0.1870
168.0	0.1870	0.1939	0.1801	0.2008	0.1801	0.1939	0.2008	0.1731	0.1939	0.1870
171.0	0.1870	0.1870	0.1801	0.2008	0.1801	0.1939	0.2008	0.1731	0.1939	0.1870
174.0	0.1870	0.1870	0.1801	0.2008	0.1801	0.1939	0.2008	0.1731	0.1939	0.1870
177.0	0.1731	0.1870	0.1801	0.2008	0.1870	0.1939	0.2008	0.1731	0.1939	0.1870
180.0	0.1870	0.1870	0.1801	0.2008	0.1870	0.1939	0.1870	0.1870	0.1939	0.1870
G/C	300.0	330.0								
0.0	14.93	14.92								
3.0	14.80	14.92								
6.0	14.68	14.84								
9.0	14.55	14.57								
12.0	14.34	14.32								
15.0	14.02	14.30								
18.0	13.68	14.09								
21.0	13.40	13.71								
24.0	13.26	13.29								
27.0	13.00	12.81								
30.0	12.62	12.36								

C Range: 0 - 360DEG  
 C Interval: 30.0DEG  
 Test Speed: HIGH  
 Temperature: 25.3DEG  
 Operators: WFW  
 Test Date: 2023-01-06

γ Range: 0 - 180DEG  
 γ Interval: 1.0DEG  
 Test System: EVERFINE GO-2000B\_V1 SYSTEM V2.0.269  
 Humidity: 65.0%  
 Test Distance: 10.800m [K=1.0000]  
 Remarks:

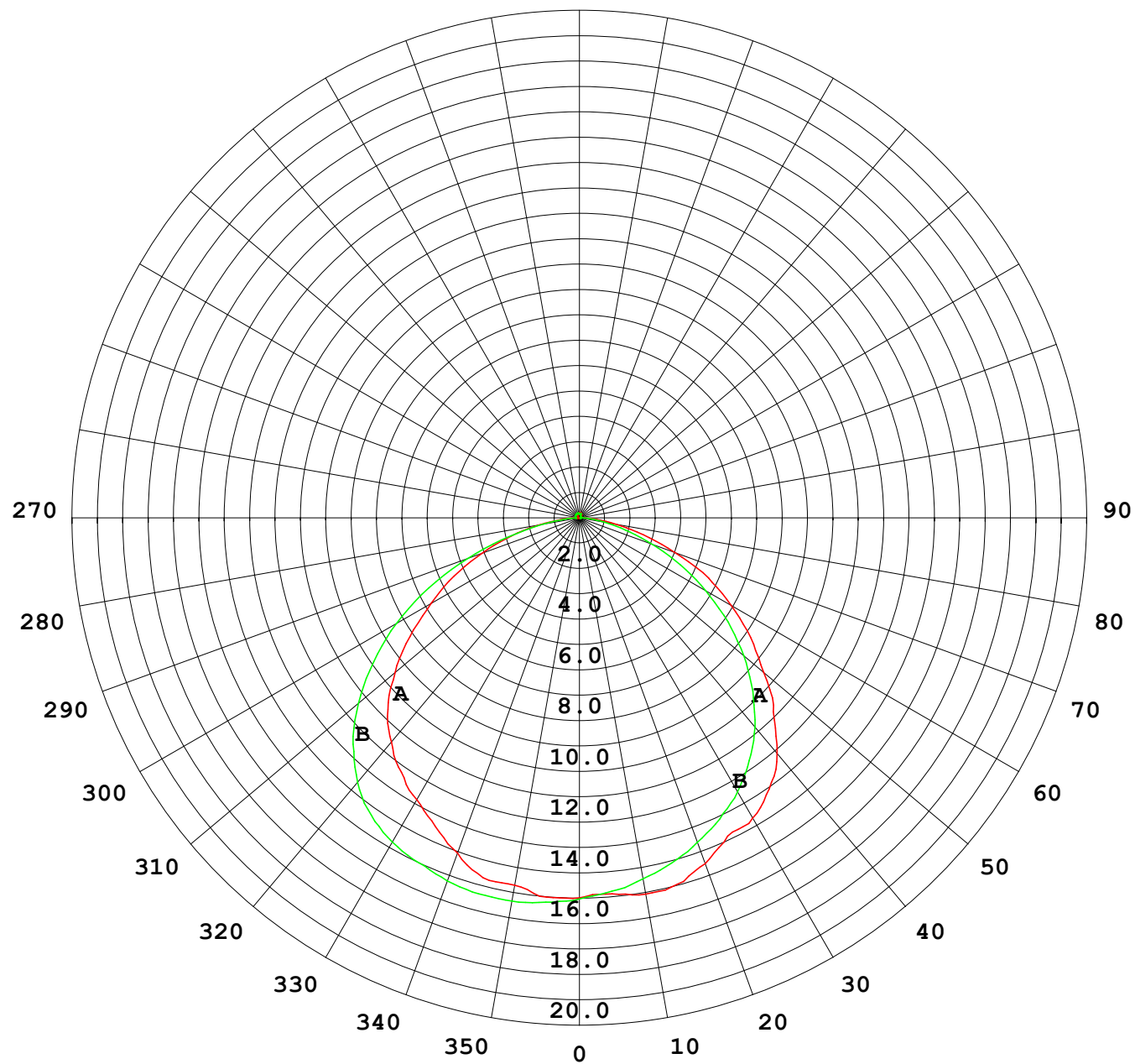
## Photometric Data Table [cd]

33.0	12.16	11.92
36.0	11.60	11.57
39.0	10.96	11.08
42.0	10.27	10.60
45.0	9.548	9.989
48.0	8.869	9.393
51.0	8.135	8.791
54.0	7.408	8.050
57.0	6.639	7.240
60.0	5.926	6.443
63.0	5.177	5.592
66.0	4.409	4.767
69.0	3.654	3.977
72.0	2.941	3.257
75.0	2.256	2.502
78.0	1.625	1.851
81.0	1.037	1.214
84.0	0.5316	0.6734
87.0	0.1585	0.2642
90.0	0.0485	0.0627
93.0	0.0485	0.0416
96.0	0.0485	0.0278
99.0	0.0555	0.0139
102.0	0.0623	0.0139
105.0	0.0762	0.0139
108.0	0.0763	0.0139
111.0	0.0831	0.0414
114.0	0.0970	0.0415
117.0	0.0971	0.0416
120.0	0.1108	0.0553
123.0	0.1108	0.0554
126.0	0.1247	0.0554
129.0	0.1247	0.0554
132.0	0.1317	0.0554
135.0	0.1385	0.0554
138.0	0.1385	0.0623
141.0	0.1387	0.0693
144.0	0.1662	0.0900
147.0	0.1732	0.0900
150.0	0.1870	0.0969
153.0	0.2008	0.1176
156.0	0.1939	0.1385
159.0	0.1939	0.1524
162.0	0.1939	0.1662
165.0	0.1939	0.1801
168.0	0.1939	0.1870
171.0	0.1939	0.1870
174.0	0.1939	0.1870
177.0	0.1939	0.1870
180.0	0.1939	0.1870

C Range: 0 - 360DEG  
C Interval: 30.0DEG  
Test Speed: HIGH  
Temperature: 25.3DEG  
Operators: WFW  
Test Date: 2023-01-06

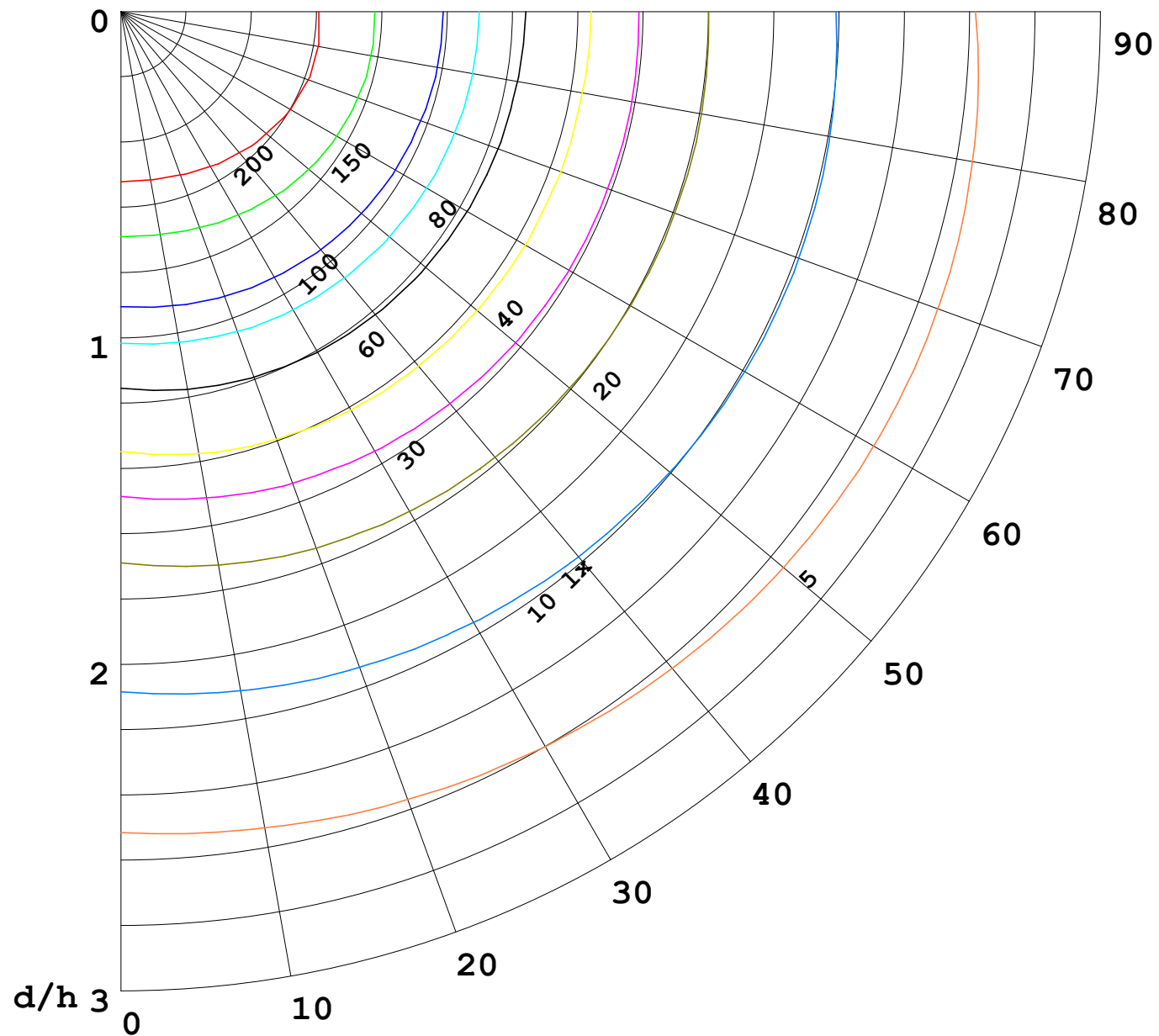
γ Range: 0 - 180DEG  
γ Interval: 1.0DEG  
Test System: EVERFINE GO-2000B\_V1 SYSTEM V2.0.269  
Humidity: 65.0%  
Test Distance: 10.800m [K=1.0000]  
Remarks:

I (cd)



1000 lm

$\kappa = 1$



F = 5000 lm  
 K = 0.7  
 Hcc = 0.0 m  
 Hfc = 0.0 m  
 Eave = 100 lx

	Pcc	Pw	Pfc
—	70	50	30
—	50	30	20

