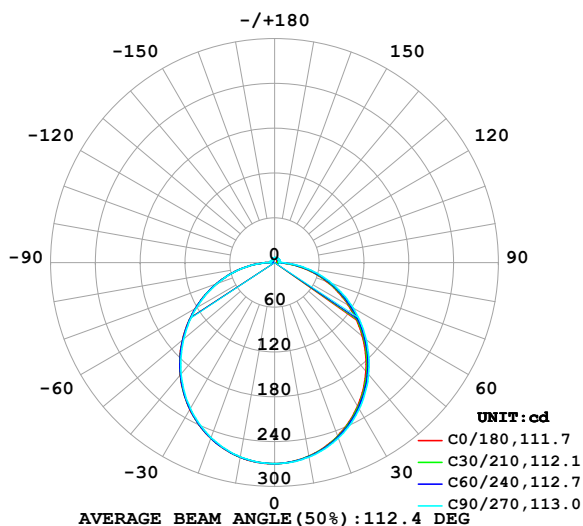


LUMINAIRE PHOTOMETRIC TEST REPORT

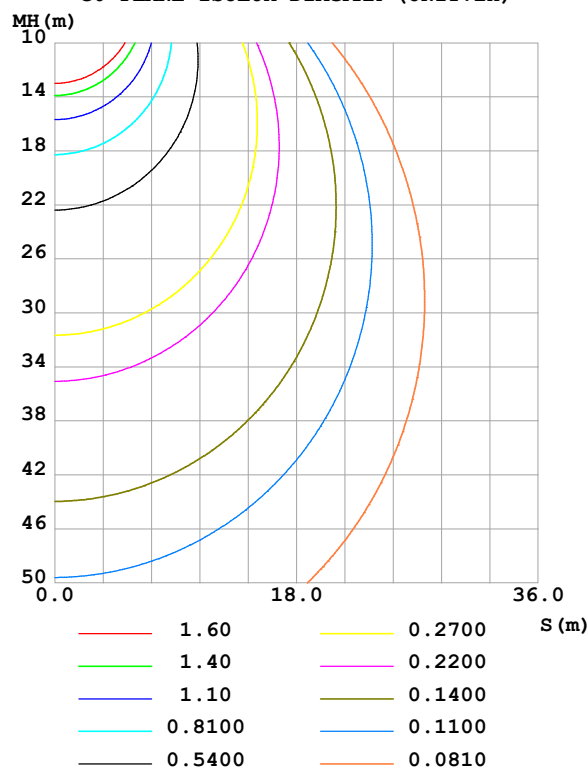
Test:U:48.00V I:0.2437A P:11.70W PF:1.000 Freq:0Hz Lamp Flux:820.432x1 lm		
NAME: SF34-48V-2835-96-CC-3000K-80	TYPE:	WEIGHT:
SPEC.:	DIM.: Length=1m	SERIAL No.:
MFR.: OLympia lighting	SUR.:	Shielding Angle:

DATA OF LAMP		PHOTOMETRIC DATA Eff: 70.14 lm/W			
MODEL	2835	Imax (cd)	269.4	S/MH(C0/180)	1.25
NOMINAL POWER(W)	12	LOR(%)	100.0	S/MH(C90/270)	1.25
RATED VOLTAGE(V)	48	TOTAL FLUX(lm)	820.43	η UP,DN(C0-180)	2.2,47.8
NOMINAL FLUX(lm)	820.432	CIE CLASS	DIRECT	η UP,DN(C180-360)	1.8,48.2
LAMPS INSIDE	1	η up (%)	4.0	CIBSE SHR NOM	1.25
TEST VOLTAGE(V)		η down (%)	96.0	CIBSE SHR MAX	1.35

LUMINOUS INTENSITY DISTRIBUTION DIAGRAM



C0 PLANE ISOLUX DIAGRAM (UNIT:lx)



C Range: 0 - 360DEG
C Interval: 30.0DEG
Test Speed: HIGH
Temperature:25.3℃
Operators:
Test Date:2025-04-16

γ Range: 0 - 180DEG
 γ Interval: 1.0DEG
Test System:EVERFINE GO-2000B_V1 SYSTEM V2.00.488
Humidity:65.0%
Test Distance:6.360m [K=1.0000]
Remarks:

ZONAL FLUX DIAGRAM

ZONAL FLUX DIAGRAM:

γ	C0	C45	C90	C135	C180	C225	C270	C315	γ	Φ zone	Φ total	%lum, lamp
10	263.4	263.8	264.6	264.8	264.9	264.7	264.3	263.8	0- 10	25.47	25.47	3.1,3.1
20	247.3	248.4	250.1	250.4	250.5	250.3	249.5	248.2	10- 20	72.79	98.25	12,12
30	222.4	224.2	226.7	227.2	227.2	226.9	225.8	223.9	20- 30	109.9	208.1	25.4,25.4
40	190.5	193.0	196.0	196.8	196.7	196.4	194.9	192.5	30- 40	131.9	340.0	41.4,41.4
50	153.7	156.7	160.2	161.0	161.1	160.7	159.2	156.3	40- 50	136.7	476.7	58.1,58.1
60	114.3	117.4	121.3	122.3	122.3	122.1	120.9	117.3	50- 60	124.6	601.3	73.3,73.3
70	74.33	77.52	81.56	82.47	82.50	82.39	81.65	77.49	60- 70	98.87	700.2	85.3,85.3
80	35.08	38.08	42.19	43.04	43.24	43.17	42.89	38.27	70- 80	63.62	763.8	93.1,93.1
90	3.164	5.052	6.278	5.964	5.586	5.700	6.332	3.848	80- 90	23.51	787.3	96,96
100	3.600	5.260	6.595	5.186	3.270	3.839	6.147	3.910	90-100	4.960	792.3	96.6,96.6
110	4.157	5.631	6.754	5.539	3.701	4.162	6.173	4.201	100-110	5.109	797.4	97.2,97.2
120	4.703	5.917	6.774	5.841	4.216	4.441	5.492	4.337	110-120	5.052	802.5	97.8,97.8
130	5.217	6.138	6.754	6.080	4.724	4.761	4.841	4.598	120-130	4.741	807.2	98.4,98.4
140	5.669	6.308	6.733	6.277	5.181	5.227	4.939	4.873	130-140	4.264	811.5	98.9,98.9
150	6.037	6.416	6.746	6.442	5.670	5.724	5.617	5.345	140-150	3.651	815.1	99.4,99.4
160	6.367	6.533	6.765	6.578	6.144	6.229	6.106	5.909	150-160	2.848	818.0	99.7,99.7
170	6.640	6.669	6.777	6.704	6.572	6.627	6.635	6.448	160-170	1.831	819.8	99.9,99.9
180	6.755	6.807	6.887	6.795	6.767	6.807	6.867	6.792	170-180	0.6399	820.4	100,100
DEG	LUMINOUS INTENSITY:cd									UNIT:lm		

Conical surface Flux(90deg): 408.86 lm

%lum = 49.8%

%lamp = 49.8%

Conical surface Flux(130deg): 654.7 lm

%lum = 79.8%

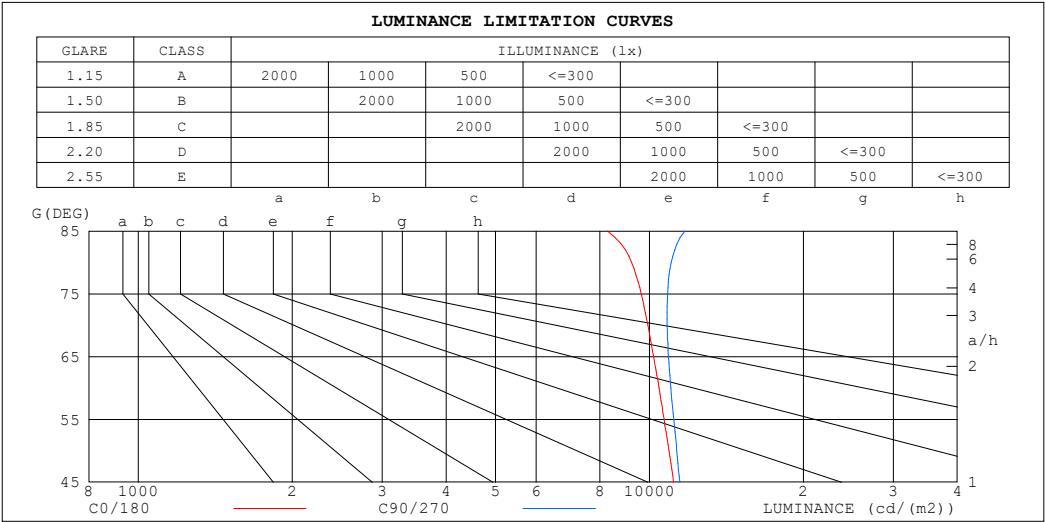
%lamp = 79.8%

C Range: 0 - 360DEG
 C Interval: 30.0DEG
 Test Speed: HIGH
 Temperature:25.3℃
 Operators:
 Test Date:2025-04-16

γ Range: 0 - 180DEG
 γ Interval: 1.0DEG
 Test System:EVERFINE GO-2000B_V1 SYSTEM V2.00.488
 Humidity:65.0%
 Test Distance:6.360m [K=1.0000]
 Remarks:

LUMINANCE LIMITATION CURVES

Test:U:48.00V I:0.2437A P:11.70W PF:1.000 Freq:0Hz Lamp Flux:820.432x1 lm		
NAME: SF34-48V-2835-96-CC-3000K-80	TYPE:	WEIGHT:
SPEC.:	DIM.: Length=1m	SERIAL No.:
MFR.: OLympia lighting	SUR.:	Shielding Angle:



LUMINANCE cd/(m2)		
G (DEG)	C0/180	C90/270
85	8279	11730
80	9224	11030
75	9637	10854
70	9922	10825
65	10190	10894
60	10437	11008
55	10677	11155
50	10916	11310
45	11146	11467

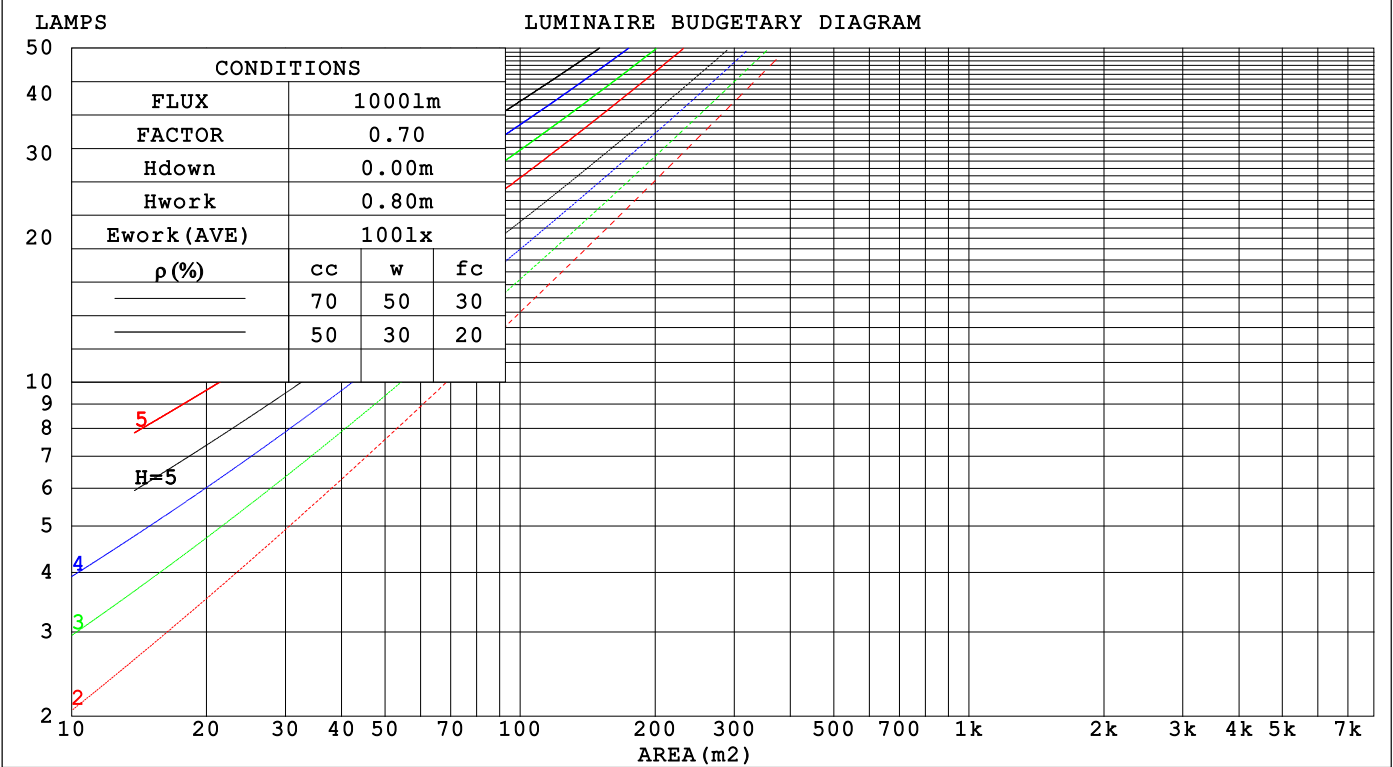
C Range: 0 - 360DEG
C Interval: 30.0DEG
Test Speed: HIGH
Temperature:25.3℃
Operators:
Test Date:2025-04-16

γ Range: 0 - 180DEG
γ Interval: 1.0DEG
Test System:EVERFINE GO-2000B_V1 SYSTEM V2.00.488
Humidity:65.0%
Test Distance:6.360m [K=1.0000]
Remarks:

CU AND LUMINAIRE BUDGETARY ESTIMATE DIAGRAM

Test:U:48.00V I:0.2437A P:11.70W PF:1.000 Freq:0Hz		
Lamp Flux:820.432x1 lm		
NAME: SF34-48V-2835-96-CC-3000K-80	TYPE:	WEIGHT:
SPEC.:	DIM.: Length=1m	SERIAL No.:
MFR.: OLYMPIA lighting	SUR.:	Shielding Angle:

pcc	80%			70%			50%			30%			10%			0
p _w	50%	30%	10%	50%	30%	10%	50%	30%	10%	50%	30%	10%	50%	30%	10%	0
p _{fc}	20%			20%			20%			20%			20%			0
RCR	RCR:Room Cavity Ratio															



C Range: 0 - 360DEG

C Interval: 30.0DEG

Test Speed: HIGH

Temperature:25.3℃

Operators:

Test Date:2025-04-16

γ Range: 0 - 180DEG

γ Interval: 1.0DEG

Test System:EVERFINE GO-2000B_V1 SYSTEM V2.00.488

Humidity:65.0%

Test Distance:6.360m [K=1.0000]

Remarks:

WEC AND CCEC

Test:U:48.00V I:0.2437A P:11.70W PF:1.000 Freq:0Hz Lamp Flux:820.432x1 lm		
NAME: SF34-48V-2835-96-CC-3000K-80	TYPE:	WEIGHT:
SPEC.:	DIM.: Length=1m	SERIAL No.:
MFR.: OLympia lighting	SUR.:	Shielding Angle:

pcc	80%			70%			50%			30%			10%			0
pw	50%	30%	10%	50%	30%	10%	50%	30%	10%	50%	30%	10%	50%	30%	10%	0
pfc	20%			20%			20%			20%			20%			0
RCR	RCR:Room Cavity Ratio						Wall Exitance Coefficients(WEC)									
0.0																
1.0	.324	.184	.058	.316	.180	.057	.300	.172	.055	.286	.165	.053	.273	.158	.051	
2.0	.300	.164	.050	.292	.161	.050	.278	.155	.048	.266	.149	.047	.254	.144	.045	
3.0	.275	.146	.044	.268	.144	.043	.256	.139	.042	.244	.134	.041	.234	.129	.040	
4.0	.252	.131	.039	.246	.129	.038	.235	.125	.037	.225	.121	.036	.216	.117	.036	
5.0	.232	.118	.034	.227	.117	.034	.217	.113	.033	.208	.110	.033	.199	.107	.032	
6.0	.215	.108	.031	.210	.106	.031	.201	.103	.030	.193	.100	.029	.185	.098	.029	
7.0	.200	.099	.028	.195	.097	.028	.187	.095	.027	.180	.092	.027	.173	.090	.026	
8.0	.186	.091	.026	.182	.090	.025	.175	.088	.025	.168	.085	.025	.162	.083	.024	
9.0	.174	.084	.024	.171	.083	.023	.164	.081	.023	.158	.079	.023	.152	.077	.022	
10.0	.164	.079	.022	.161	.078	.022	.155	.076	.021	.149	.074	.021	.144	.072	.021	

pcc	80%			70%			50%			30%			10%			0
pw	50%	30%	10%	50%	30%	10%	50%	30%	10%	50%	30%	10%	50%	30%	10%	0
pfc	20%			20%			20%			20%			20%			0
RCR	RCR:Room Cavity Ratio						Ceiling Cavity Exitance Coefficients (CCEC)									
0.0	.221	.221	.221	.189	.189	.189	.129	.129	.129	.074	.074	.074	.024	.024	.024	
1.0	.212	.187	.164	.182	.160	.141	.124	.110	.098	.072	.064	.057	.023	.021	.018	
2.0	.205	.163	.128	.175	.140	.111	.120	.097	.077	.069	.056	.045	.022	.018	.015	
3.0	.197	.146	.105	.169	.126	.091	.116	.087	.064	.067	.051	.038	.021	.017	.012	
4.0	.189	.133	.089	.162	.115	.078	.112	.080	.055	.065	.047	.032	.021	.015	.011	
5.0	.182	.122	.078	.156	.106	.068	.107	.074	.048	.062	.043	.029	.020	.014	.009	
6.0	.174	.114	.071	.150	.099	.062	.103	.069	.044	.060	.041	.026	.019	.013	.009	
7.0	.168	.107	.065	.144	.093	.057	.100	.065	.040	.058	.038	.024	.019	.013	.008	
8.0	.161	.101	.060	.139	.088	.053	.096	.062	.037	.056	.036	.022	.018	.012	.007	
9.0	.155	.097	.057	.133	.084	.050	.092	.059	.035	.054	.035	.021	.017	.011	.007	
10.0	.149	.092	.054	.129	.080	.047	.089	.056	.034	.052	.033	.020	.017	.011	.007	

C Range: 0 - 360DEG
C Interval: 30.0DEG
Test Speed: HIGH
Temperature:25.3℃
Operators:
Test Date:2025-04-16

γ Range: 0 - 180DEG
γ Interval: 1.0DEG
Test System:EVERFINE GO-2000B_V1 SYSTEM V2.00.488
Humidity:65.0%
Test Distance:6.360m [K=1.0000]
Remarks:

UGR(Unified Glare Rating) Table

Test:U:48.00V I:0.2437A P:11.70W PF:1.000 Freq:0Hz Lamp Flux:820.432x1 lm										
NAME: SF34-48V-2835-96-CC-3000K-80					TYPE:			WEIGHT:		
SPEC.:					DIM.: Length=1m			SERIAL No.:		
MFR.: OLympia lighting					SUR.:			Shielding Angle:		
ceiling/cavity	0.7	0.7	0.5	0.5	0.3	0.7	0.7	0.5	0.5	0.3
walls	0.5	0.3	0.5	0.3	0.3	0.5	0.3	0.5	0.3	0.3
working plane	0.2	0.2	0.2	0.2	0.2	0.2	0.2	0.2	0.2	0.2
Room dimensions	Viewed crosswise					Viewed endwise				
x = 2H y = 2H	21.5	22.9	21.8	23.2	23.5	21.6	23.1	22.0	23.4	23.7
3H	23.1	24.4	23.4	24.7	25.1	23.3	24.7	23.7	25.0	25.3
4H	23.7	25.0	24.1	25.4	25.7	24.1	25.4	24.5	25.7	26.1
6H	24.3	25.5	24.7	25.9	26.2	24.7	26.0	25.1	26.3	26.7
8H	24.5	25.7	24.9	26.0	26.4	25.0	26.2	25.4	26.5	26.9
12H	24.6	25.7	25.0	26.1	26.5	25.2	26.4	25.6	26.7	27.1
4H 2H	22.1	23.4	22.5	23.7	24.1	22.2	23.5	22.6	23.9	24.2
3H	23.9	25.0	24.3	25.4	25.8	24.1	25.3	24.5	25.6	26.0
4H	24.7	25.8	25.2	26.2	26.6	25.0	26.1	25.5	26.5	26.9
6H	25.4	26.3	25.9	26.8	27.2	25.8	26.8	26.3	27.2	27.6
8H	25.7	26.5	26.1	27.0	27.4	26.2	27.0	26.6	27.5	27.9
12H	25.8	26.6	26.3	27.1	27.6	26.4	27.2	26.9	27.7	28.2
8H 4H	25.1	25.9	25.5	26.4	26.8	25.3	26.2	25.8	26.6	27.1
6H	25.9	26.6	26.4	27.1	27.6	26.3	27.0	26.8	27.5	28.0
8H	26.3	26.9	26.8	27.4	27.9	26.7	27.4	27.3	27.9	28.4
12H	26.5	27.1	27.1	27.6	28.2	27.1	27.7	27.7	28.2	28.8
12H 4H	25.1	25.9	25.6	26.3	26.8	25.3	26.1	25.8	26.6	27.1
6H	26.0	26.6	26.5	27.1	27.7	26.4	27.0	26.9	27.5	28.1
8H	26.4	27.0	27.0	27.5	28.1	26.9	27.4	27.4	27.9	28.5
Variations with the observer position at spacings(CIE Pub.117):										
S = 1.0H	+ 0.1 / - 0.2					+ 0.1 / - 0.2				
1.5H	+ 0.2 / - 0.3					+ 0.2 / - 0.3				
2.0H	+ 0.1 / - 0.3					+ 0.1 / - 0.3				

CIE Pub.117, 820.4 lm Total Lamp Luminous Flux Correct (8log(F/F0) = -0.7)
Area: 0.022 m2

C Range: 0 - 360DEG
C Interval: 30.0DEG
Test Speed: HIGH
Temperature:25.3℃
Operators:
Test Date:2025-04-16

γ Range: 0 - 180DEG
γ Interval: 1.0DEG
Test System:EVERFINE GO-2000B_V1 SYSTEM V2.00.488
Humidity:65.0%
Test Distance:6.360m [K=1.0000]
Remarks:

UTILIZATION FACTORS TABLE

Test:U:48.00V I:0.2437A P:11.70W PF:1.000 Freq:0Hz Lamp Flux:820.432x1 lm		
NAME: SF34-48V-2835-96-CC-3000K-80	TYPE:	WEIGHT:
SPEC.:	DIM.: Length=1m	SERIAL No.:
MFR.: OLympia lighting	SUR.:	Shielding Angle:

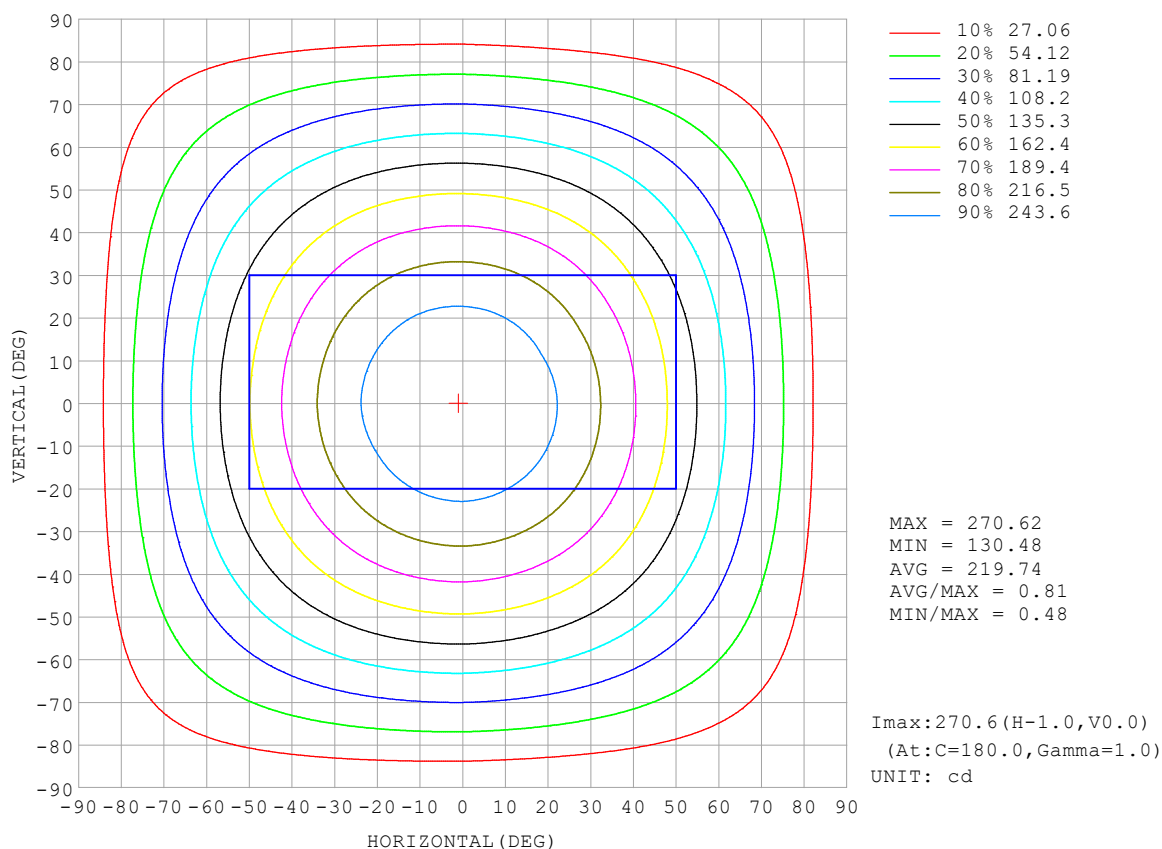
REFLECTANCE										
Ceiling	0.8	0.8	0.8	0.7	0.7	0.7	0.5	0.5	0.5	0
Walls	0.7	0.5	0.3	0.7	0.5	0.3	0.7	0.5	0.3	0
Working plane	0.2	0.2	0.2	0.2	0.2	0.2	0.2	0.2	0.2	0
ROOM INDEX	UTILIZATION FACTORS (PERCENT) $k(RI) \times RCR = 5$									
$k = 0.60$	56	44	37	55	44	37	53	43	37	30
0.80	66	54	46	64	53	46	62	52	45	38
1.00	74	62	55	72	62	54	70	63	54	46
1.25	81	70	63	79	69	62	76	67	61	53
1.50	86	75	68	84	74	68	80	72	66	58
2.00	93	84	77	91	82	76	87	80	74	65
2.50	97	89	82	94	87	81	90	84	79	69
3.00	100	93	87	98	91	86	93	88	83	73
4.00	104	98	93	102	96	92	97	92	88	78
5.00	107	102	97	104	99	95	99	95	92	81
ROOM INDEX	UF (total)									Direct
According to DIN EN 13032-2 2004			Suspended					SHRNOM = 1.25		

C Range: 0 - 360DEG
 C Interval: 30.0DEG
 Test Speed: HIGH
 Temperature: 25.3 °C
 Operators:
 Test Date: 2025-04-16

γ Range: 0 - 180DEG
 γ Interval: 1.0DEG
 Test System: EVERFINE GO-2000B_V1 SYSTEM V2.00.488
 Humidity: 65.0%
 Test Distance: 6.360m [K=1.0000]
 Remarks:

ISOCANDELA DIAGRAM

Test:U:48.00V I:0.2437A P:11.70W PF:1.000 Freq:0Hz Lamp Flux:820.432x1 lm		
NAME: SF34-48V-2835-96-CC-3000K-80	TYPE:	WEIGHT:
SPEC.:	DIM.: Length=1m	SERIAL No.:
MFR.: OLympia lighting	SUR.:	Shielding Angle:

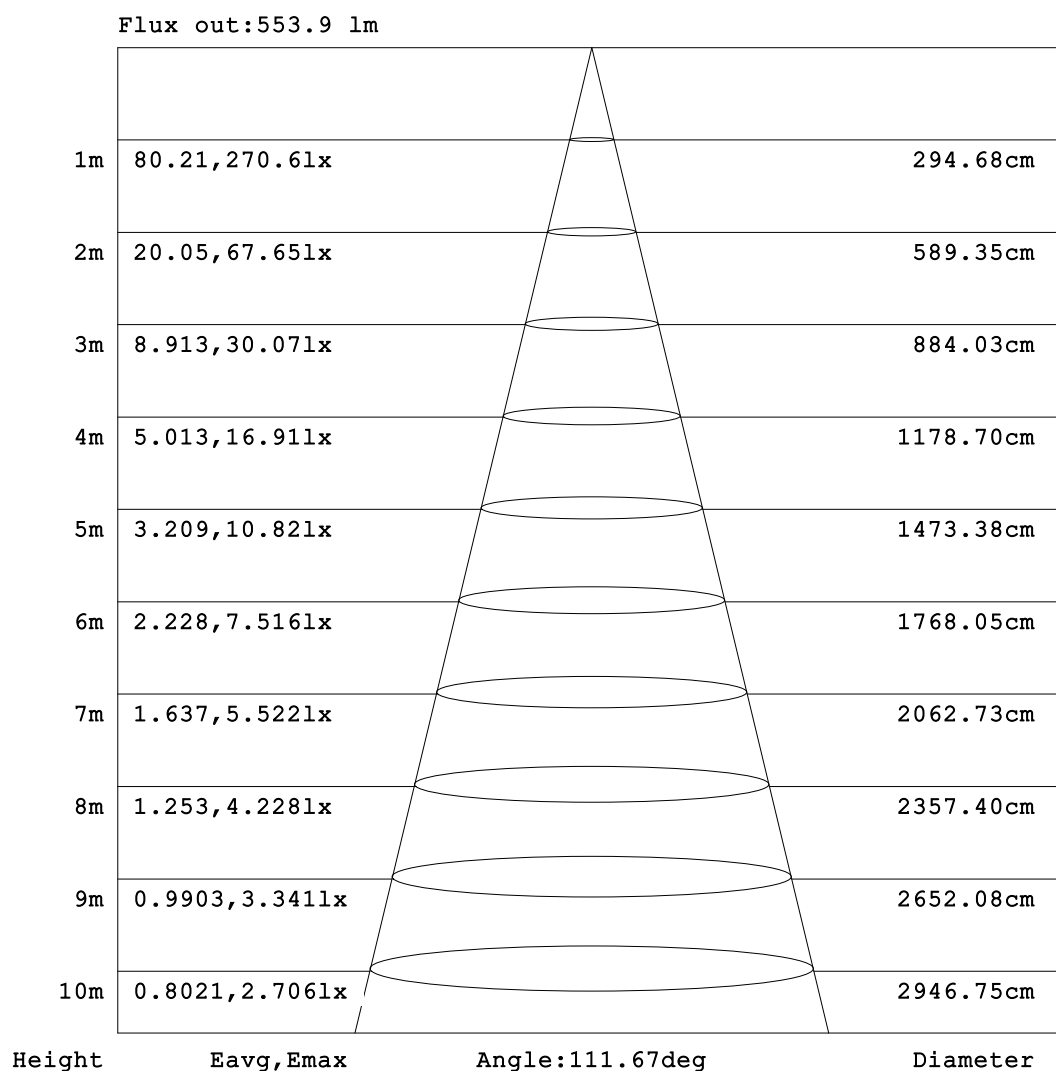


C Range: 0 - 360DEG
C Interval: 30.0DEG
Test Speed: HIGH
Temperature:25.3℃
Operators:
Test Date:2025-04-16

γ Range: 0 - 180DEG
γ Interval: 1.0DEG
Test System:EVERFINE GO-2000B_V1 SYSTEM V2.00.488
Humidity:65.0%
Test Distance:6.360m [K=1.0000]
Remarks:

AAI Figure

Test:U:48.00V I:0.2437A P:11.70W PF:1.000 Freq:0Hz Lamp Flux:820.432x1 lm		
NAME: SF34-48V-2835-96-CC-3000K-80	TYPE:	WEIGHT:
SPEC.:	DIM.: Length=1m	SERIAL No.:
MFR.: OLympia lighting	SUR.:	Shielding Angle:



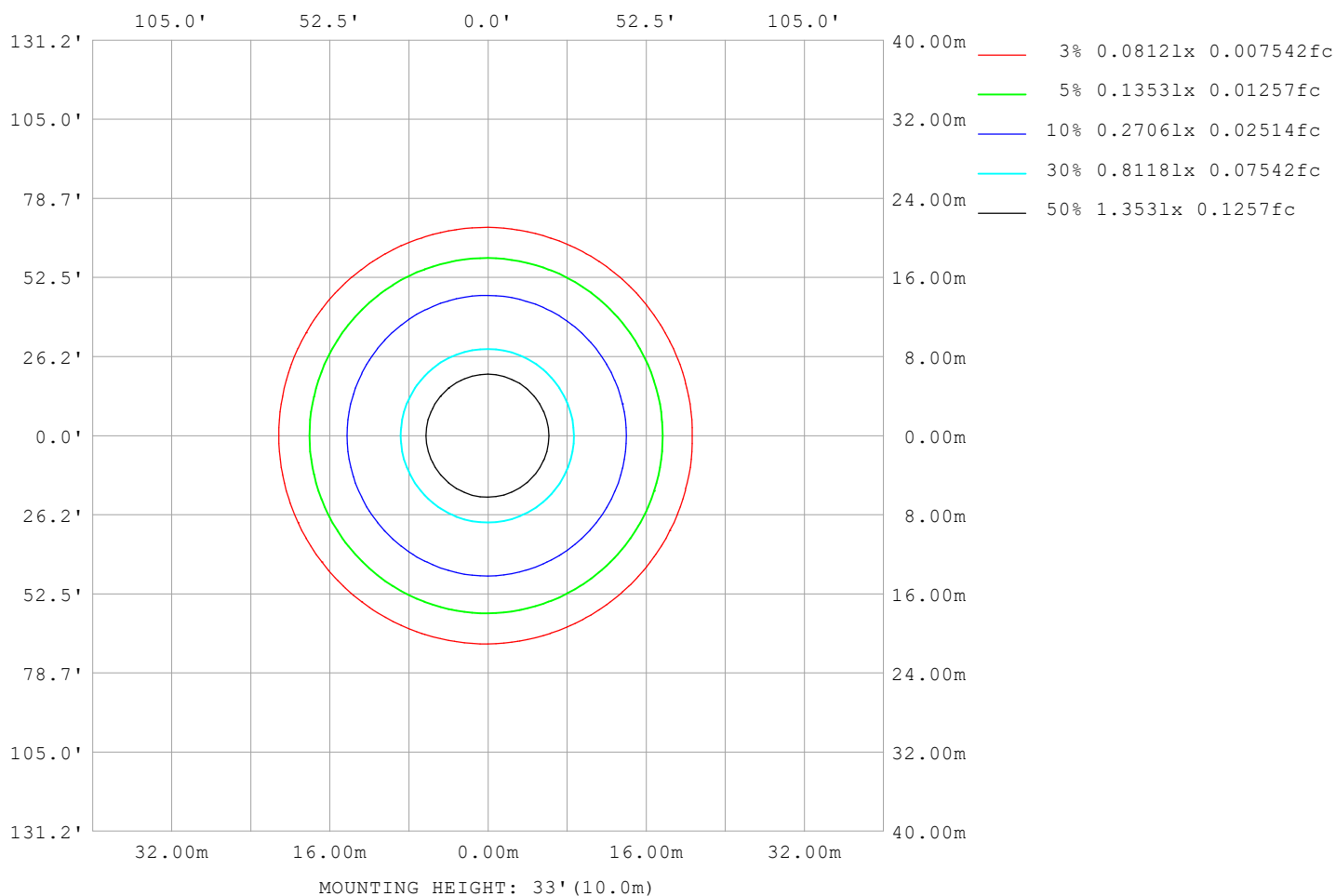
Note:The Curves indicate the illuminated area and the average illumination when the luminaire is at different distance.

C Range: 0 - 360DEG
C Interval: 30.0DEG
Test Speed: HIGH
Temperature:25.3℃
Operators:
Test Date:2025-04-16

γ Range: 0 - 180DEG
γ Interval: 1.0DEG
Test System:EVERFINE GO-2000B_V1 SYSTEM V2.00.488
Humidity:65.0%
Test Distance:6.360m [K=1.0000]
Remarks:

ISOLUX DIAGRAM

Test:U:48.00V I:0.2437A P:11.70W PF:1.000 Freq:0Hz Lamp Flux:820.432x1 lm		
NAME: SF34-48V-2835-96-CC-3000K-80	TYPE:	WEIGHT:
SPEC.:	DIM.: Length=1m	SERIAL No.:
MFR.: OLympia lighting	SUR.:	Shielding Angle:



C Range: 0 - 360DEG
C Interval: 30.0DEG
Test Speed: HIGH
Temperature: 25.3°C
Operators:
Test Date: 2025-04-16

γ Range: 0 - 180DEG
γ Interval: 1.0DEG
Test System: EVERFINE GO-2000B_V1 SYSTEM V2.00.488
Humidity: 65.0%
Test Distance: 6.360m [K=1.0000]
Remarks:

LED Avg.L Report

Test:U:48.00V I:0.2437A P:11.70W PF:1.000 Freq:0Hz Lamp Flux:820.432x1 lm		
NAME: SF34-48V-2835-96-CC-3000K-80	TYPE:	WEIGHT:
SPEC.:	DIM.: Length=1m	SERIAL No.:
MFR.: OLympia lighting	SUR.:	Shielding Angle:

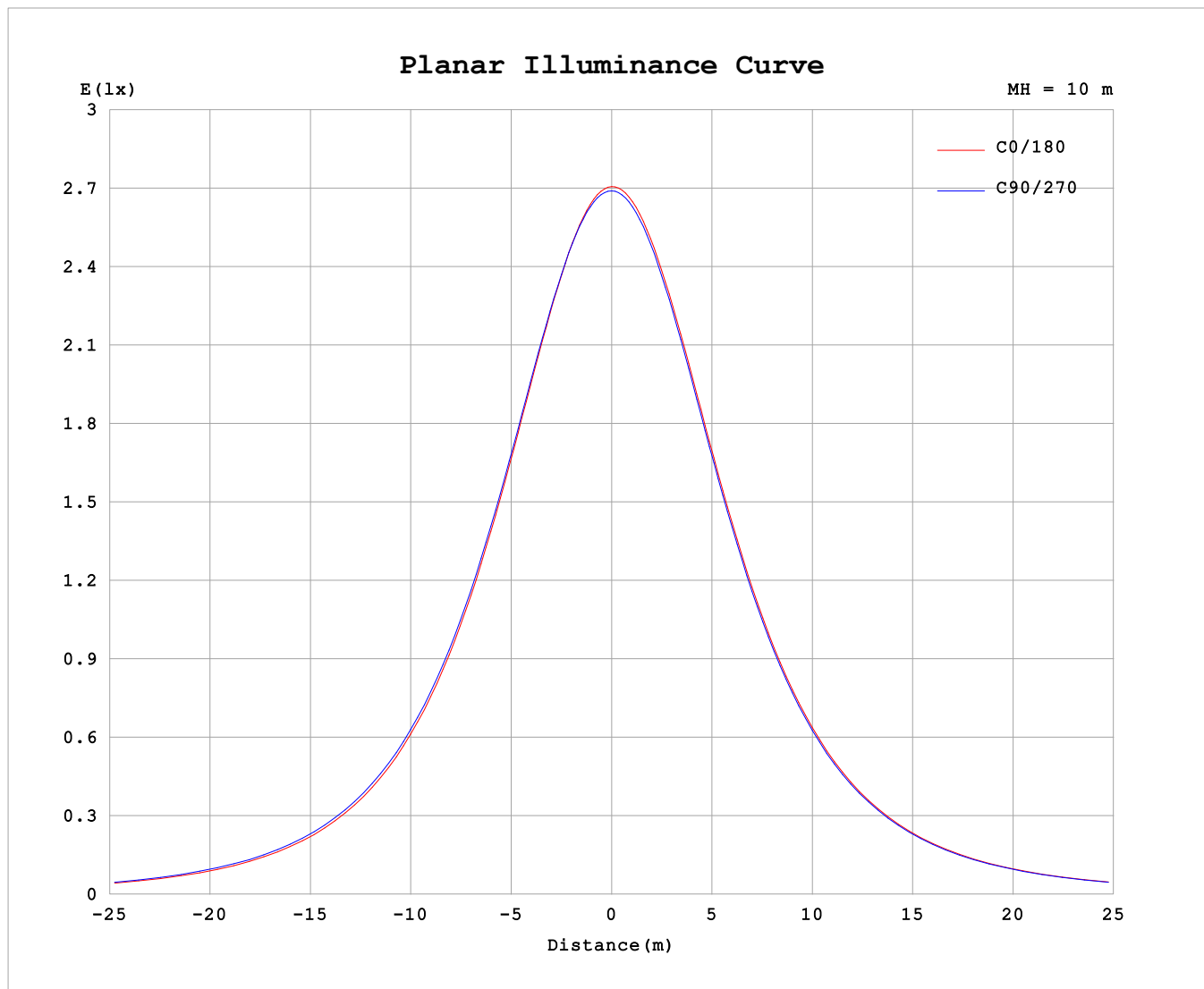
AvgL	cd/m2
L_0~180 (65) av	10579
L_0~180 (75) av	10311
L_0~180 (85) av	10311
L_90~270 (65) av	10901
L_90~270 (75) av	10895
L_90~270 (85) av	12024
L_45 (65) av	10745
L_45 (75) av	10576
L_45 (85) av	10991

Standard: GB/T 29293-2012

C Range: 0 - 360DEG
C Interval: 30.0DEG
Test Speed: HIGH
Temperature:25.3℃
Operators:
Test Date:2025-04-16

γ Range: 0 - 180DEG
γ Interval: 1.0DEG
Test System:EVERFINE GO-2000B_V1 SYSTEM V2.00.488
Humidity:65.0%
Test Distance:6.360m [K=1.0000]
Remarks:

Planar Illuminance Curve



C Range: 0 - 360DEG
C Interval: 30.0DEG
Test Speed: HIGH
Temperature: 25.3 °C
Operators:
Test Date: 2025-04-16

γ Range: 0 - 180DEG
 γ Interval: 1.0DEG
Test System: EVERFINE GO-2000B_V1 SYSTEM V2.00.488
Humidity: 65.0%
Test Distance: 6.360m [K=1.0000]
Remarks:

LUMINOUS DISTRIBUTION INTENSITY DATA

Test:U:48.00V I:0.2437A P:11.70W PF:1.000 Freq:0Hz Lamp Flux:820.432x1 lm		
NAME: SF34-48V-2835-96-CC-3000K-80	TYPE:	WEIGHT:
SPEC.:	DIM.: Length=1m	SERIAL No.:
MFR.: OLYMPIA lighting	SUR.:	Shielding Angle:

Table--1

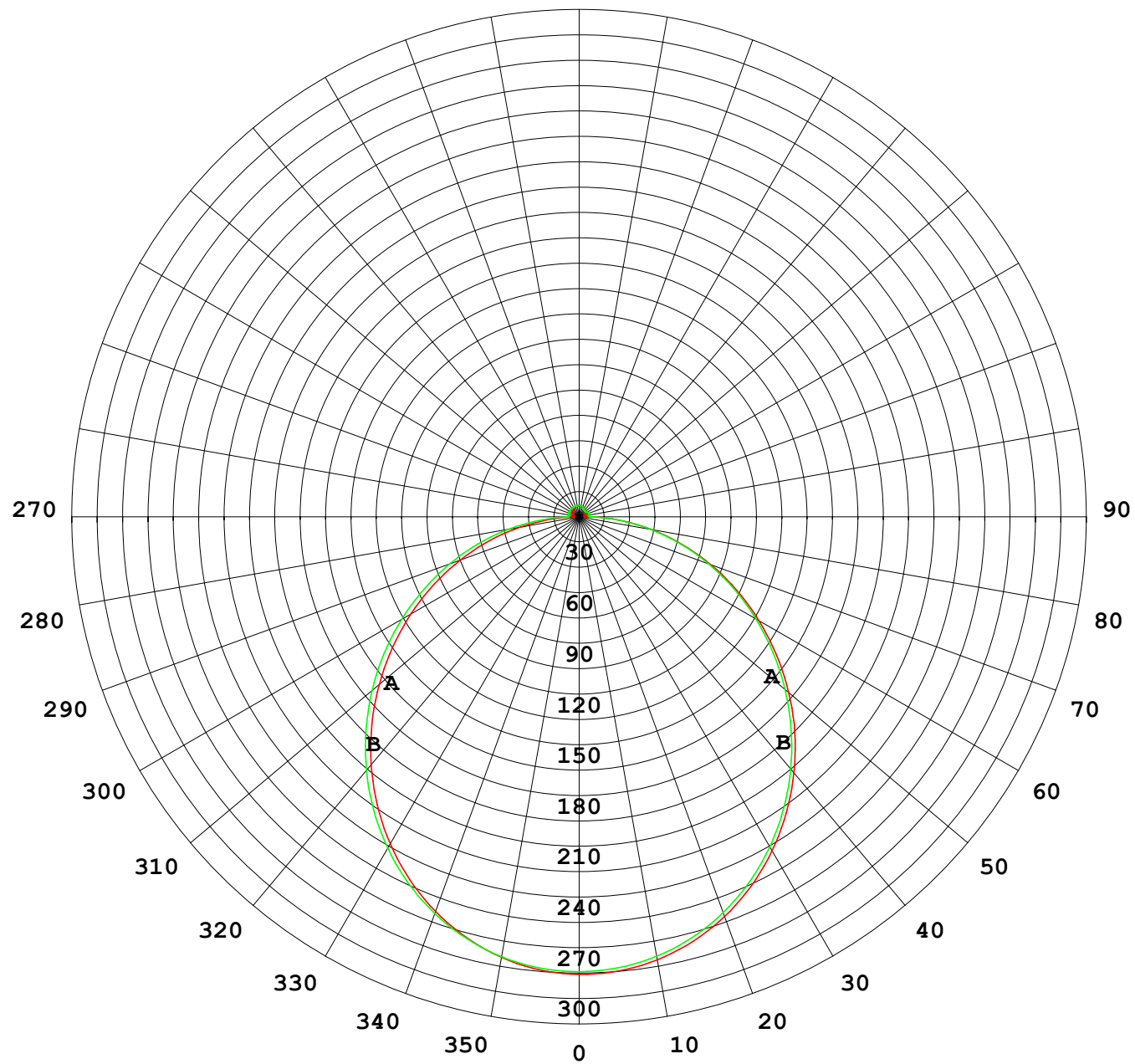
UNIT: cd

C (DEG) γ (DEG)	0	30	60	90	120	150	180	210	240	270	300	330						
0	269	269	269	269	269	269	269	269	269	269	269	269						
5	268	268	268	268	268	268	268	268	268	268	268	268						
10	263	264	264	265	265	265	265	265	265	264	264	264						
15	256	257	258	258	259	259	259	259	259	258	258	257						
20	247	248	249	250	250	251	250	250	250	249	249	248						
25	236	237	238	239	240	240	240	240	240	239	238	236						
30	222	224	225	227	227	227	227	227	227	226	225	223						
35	207	209	210	212	213	213	213	212	212	211	210	208						
40	191	192	194	196	197	197	197	196	196	195	194	192						
45	173	174	176	179	179	180	180	179	179	178	176	174						
50	154	156	158	160	161	161	161	161	161	159	158	155						
55	134	136	138	141	142	142	142	142	142	140	138	136						
60	114	116	119	121	122	122	122	122	122	121	119	116						
65	94.3	96.3	98.7	101	102	102	102	102	102	101	98.9	95.9						
70	74.3	76.3	78.7	81.6	82.4	82.5	82.5	82.4	82.4	81.7	79.0	76.0						
75	54.6	56.6	59.0	61.9	62.6	62.8	62.8	62.7	62.7	62.2	59.2	56.3						
80	35.1	36.9	39.3	42.2	42.9	43.2	43.2	43.2	43.2	42.9	39.7	36.8						
85	15.8	17.4	19.6	22.5	23.3	23.6	23.7	23.6	23.8	23.6	20.3	17.4						
90	3.16	4.35	5.76	6.28	6.13	5.80	5.59	5.57	5.83	6.33	4.50	3.19						
95	3.32	4.41	5.69	6.46	5.64	4.40	3.12	3.26	4.10	6.01	4.26	3.15						
100	3.60	4.64	5.88	6.60	5.80	4.57	3.27	3.41	4.27	6.15	4.45	3.37						
105	3.88	4.86	6.05	6.69	5.97	4.75	3.47	3.58	4.43	6.19	4.55	3.59						
110	4.16	5.08	6.18	6.75	6.11	4.96	3.70	3.80	4.52	6.17	4.57	3.83						
115	4.44	5.28	6.29	6.77	6.24	5.16	3.95	4.03	4.57	5.86	4.45	4.01						
120	4.70	5.46	6.38	6.77	6.34	5.34	4.22	4.28	4.61	5.49	4.39	4.28						
125	4.96	5.63	6.44	6.77	6.41	5.51	4.48	4.51	4.65	5.13	4.39	4.53						
130	5.22	5.79	6.48	6.75	6.47	5.69	4.72	4.74	4.79	4.84	4.48	4.72						
135	5.45	5.95	6.52	6.74	6.52	5.84	4.94	4.98	4.99	4.81	4.68	4.60						
140	5.67	6.08	6.54	6.73	6.56	5.99	5.18	5.22	5.23	4.94	4.90	4.85						
145	5.86	6.17	6.56	6.73	6.59	6.13	5.43	5.47	5.48	5.19	5.14	5.06						
150	6.04	6.26	6.57	6.75	6.63	6.26	5.67	5.72	5.73	5.62	5.39	5.30						
155	6.20	6.35	6.60	6.75	6.65	6.37	5.91	5.97	5.98	5.87	5.88	5.55						
160	6.37	6.45	6.61	6.76	6.67	6.48	6.14	6.20	6.25	6.11	6.03	5.79						
165	6.51	6.55	6.64	6.77	6.69	6.59	6.36	6.41	6.50	6.38	6.26	6.05						
170	6.64	6.66	6.68	6.78	6.71	6.70	6.57	6.57	6.68	6.64	6.49	6.40						
175	6.72	6.75	6.75	6.84	6.79	6.77	6.70	6.70	6.80	6.78	6.73	6.62						
180	6.76	6.78	6.83	6.89	6.82	6.77	6.77	6.77	6.84	6.87	6.83	6.75						

C Range: 0 - 360DEG
C Interval: 30.0DEG
Test Speed: HIGH
Temperature:25.3℃
Operators:
Test Date:2025-04-16

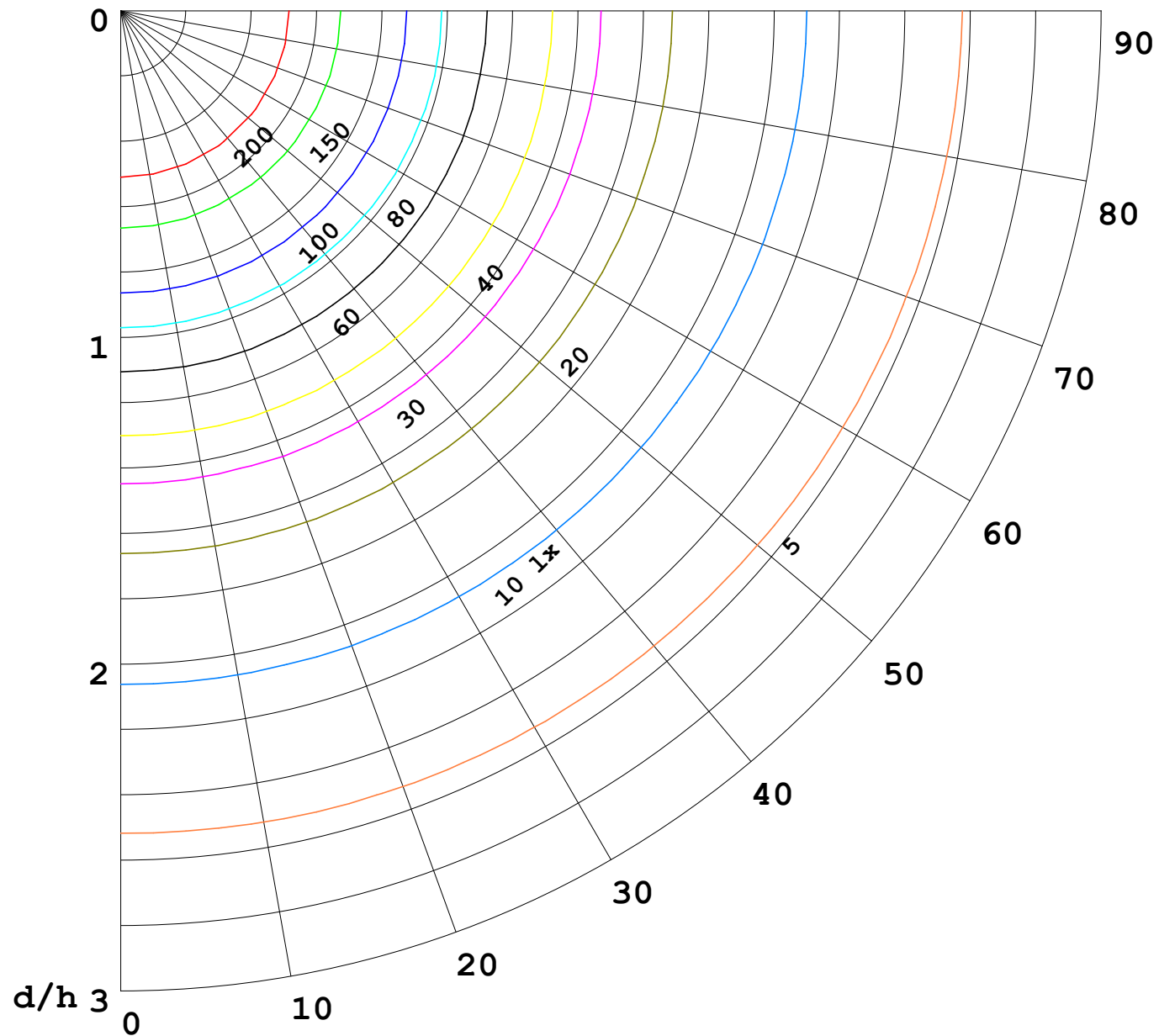
γ Range: 0 - 180DEG
γ Interval: 1.0DEG
Test System:EVERFINE GO-2000B_V1 SYSTEM V2.00.488
Humidity:65.0%
Test Distance:6.360m [K=1.0000]
Remarks:

I (cd)



1000 lm

$\kappa = 1$



F = 1000 lm
 K = 0.7
 Hcc = 0.8 m
 Hfc = 0.0 m
 Eave = 100 lx

	Pcc	Pw	Pfc
—————	70	50	30
—————	50	30	20

