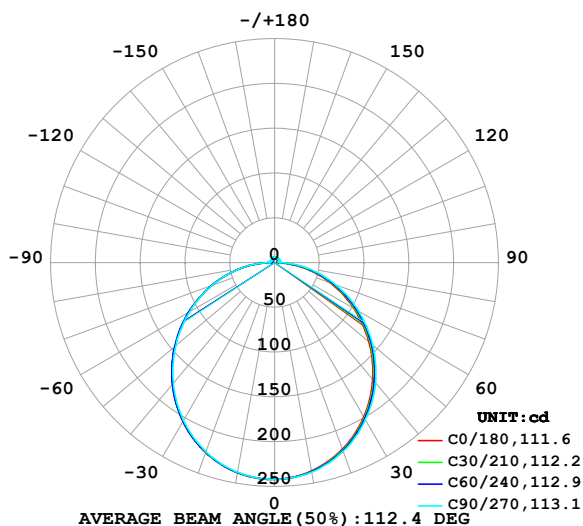


LUMINAIRE PHOTOMETRIC TEST REPORT

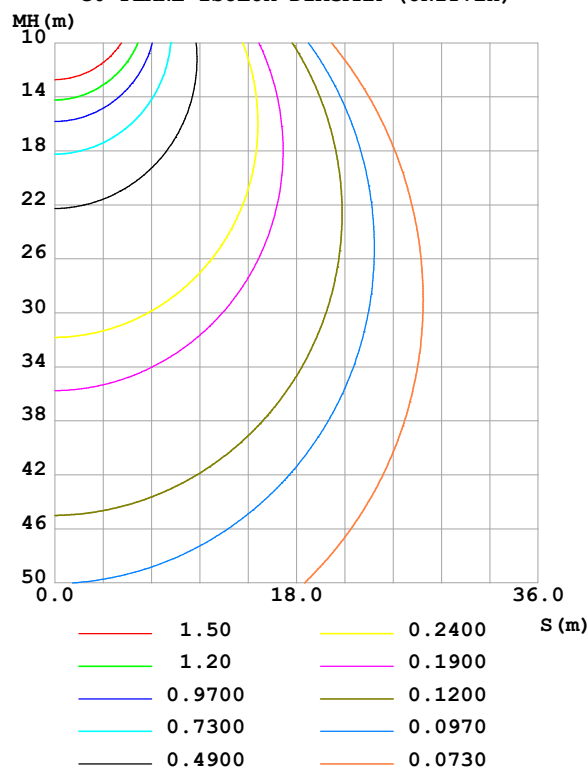
Test:U:48.00V I:0.2449A P:11.76W PF:1.000 Freq:0Hz Lamp Flux:736.964x1 lm		
NAME: SF34-48V-2835-96-CC-2200K-80	TYPE:	WEIGHT:
SPEC.:	DIM.: Length=1m	SERIAL No.:
MFR.: OLympia lighting	SUR.:	Shielding Angle:

DATA OF LAMP		PHOTOMETRIC DATA				Eff: 62.69 lm/W
MODEL	2835	I _{max} (cd)	242.1	S/MH(C0/180)	1.26	
NOMINAL POWER(W)	12	LOR(%)	100.0	S/MH(C90/270)	1.25	
RATED VOLTAGE(V)	48	TOTAL FLUX(lm)	736.96	η UP,DN(C0-180)	2.2,47.6	
NOMINAL FLUX(lm)	736.964	CIE CLASS	DIRECT	η UP,DN(C180-360)	1.8,48.4	
LAMPS INSIDE	1	η up(%)	4.0	CIBSE SHR NOM	1.25	
TEST VOLTAGE(V)		η down(%)	96.0	CIBSE SHR MAX	1.35	

LUMINOUS INTENSITY DISTRIBUTION DIAGRAM



C0 PLANE ISOLUX DIAGRAM (UNIT:lx)



C Range: 0 - 360DEG
C Interval: 30.0DEG
Test Speed: HIGH
Temperature:25.3℃
Operators:
Test Date:2025-04-16

γ Range: 0 - 180DEG
γ Interval: 1.0DEG
Test System:EVERFINE GO-2000B_V1 SYSTEM V2.00.488
Humidity:65.0%
Test Distance:6.360m [K=1.0000]
Remarks:

ZONAL FLUX DIAGRAM

ZONAL FLUX DIAGRAM:

γ	C0	C45	C90	C135	C180	C225	C270	C315	γ	Φ zone	Φ total	%lum, lamp
10	236.3	236.9	237.6	238.0	238.4	238.2	237.8	237.1	0- 10	22.89	22.89	3.11,3.11
20	221.6	222.8	224.1	225.1	225.4	225.4	224.6	223.1	10- 20	65.42	88.31	12,12
30	199.2	200.9	202.8	204.2	204.7	204.8	203.6	201.2	20- 30	98.73	187.0	25.4,25.4
40	170.5	172.7	175.5	176.9	177.4	177.6	176.1	173.1	30- 40	118.6	305.6	41.5,41.5
50	137.4	140.1	142.8	144.9	145.2	145.5	144.0	140.4	40- 50	122.8	428.4	58.1,58.1
60	102.1	104.9	108.1	110.1	110.4	110.8	109.7	105.3	50- 60	112.1	540.5	73.3,73.3
70	66.30	69.17	72.57	74.30	74.61	74.71	74.37	69.52	60- 70	88.91	629.4	85.4,85.4
80	31.19	33.80	37.26	38.74	39.02	39.25	39.46	34.27	70- 80	57.21	686.6	93.2,93.2
90	2.841	4.240	5.346	5.100	4.805	4.936	6.337	3.458	80- 90	21.07	707.7	96,96
100	3.207	4.569	5.620	4.530	2.886	3.485	5.949	3.521	90-100	4.418	712.1	96.6,96.6
110	3.710	4.879	5.765	4.847	3.315	3.731	5.854	3.740	100-110	4.542	716.7	97.2,97.2
120	4.187	5.118	5.825	5.096	3.769	3.937	5.014	3.862	110-120	4.462	721.1	97.8,97.8
130	4.616	5.300	5.833	5.299	4.206	4.203	4.317	4.088	120-130	4.162	725.3	98.4,98.4
140	4.987	5.450	5.841	5.469	4.649	4.631	4.415	4.367	130-140	3.744	729.0	98.9,98.9
150	5.332	5.589	5.892	5.639	5.083	5.088	4.989	4.807	140-150	3.220	732.2	99.4,99.4
160	5.668	5.759	5.947	5.817	5.499	5.525	5.446	5.296	150-160	2.521	734.8	99.7,99.7
170	5.947	5.946	6.025	5.996	5.887	5.904	5.851	5.734	160-170	1.628	736.4	99.9,99.9
180	6.057	6.102	6.157	6.049	6.065	6.102	6.149	6.041	170-180	0.5710	737.0	100,100
DEG	LUMINOUS INTENSITY:cd									UNIT:lm		

Conical surface Flux(90deg): 367.46 lm

%lum = 49.9%

%lamp = 49.9%

Conical surface Flux(130deg): 588.49 lm

%lum = 79.9%

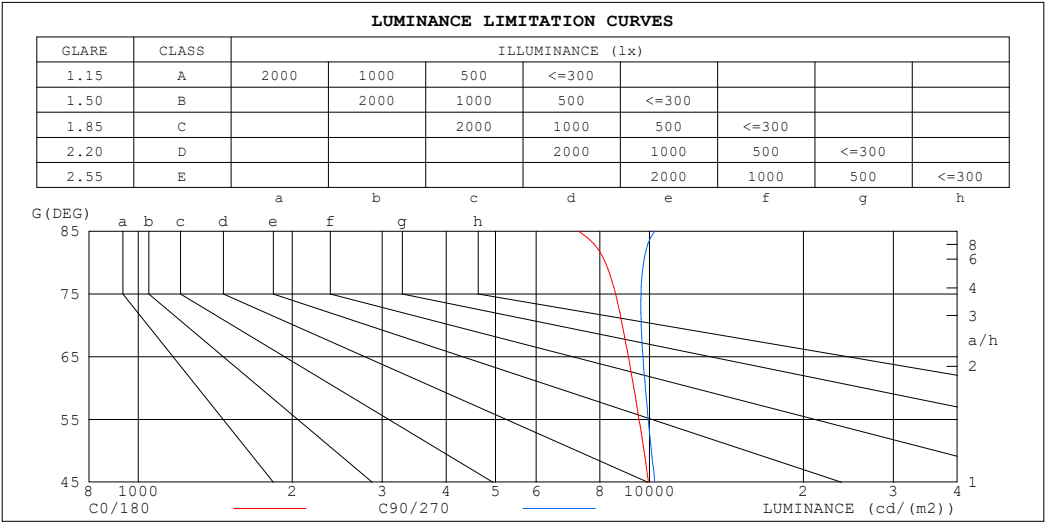
%lamp = 79.9%

C Range: 0 - 360DEG
 C Interval: 30.0DEG
 Test Speed: HIGH
 Temperature:25.3℃
 Operators:
 Test Date:2025-04-16

γ Range: 0 - 180DEG
 γ Interval: 1.0DEG
 Test System:EVERFINE GO-2000B_V1 SYSTEM V2.00.488
 Humidity:65.0%
 Test Distance:6.360m [K=1.0000]
 Remarks:

LUMINANCE LIMITATION CURVES

Test:U:48.00V I:0.2449A P:11.76W PF:1.000 Freq:0Hz Lamp Flux:736.964x1 lm		
NAME: SF34-48V-2835-96-CC-2200K-80	TYPE:	WEIGHT:
SPEC.:	DIM.: Length=1m	SERIAL No.:
MFR.: OLympia lighting	SUR.:	Shielding Angle:



LUMINANCE cd/(m2)		
G (DEG)	C0/180	C90/270
85	7261	10240
80	8198	9743
75	8583	9626
70	8847	9634
65	9090	9707
60	9318	9815
55	9539	9944
50	9754	10089
45	9958	10239

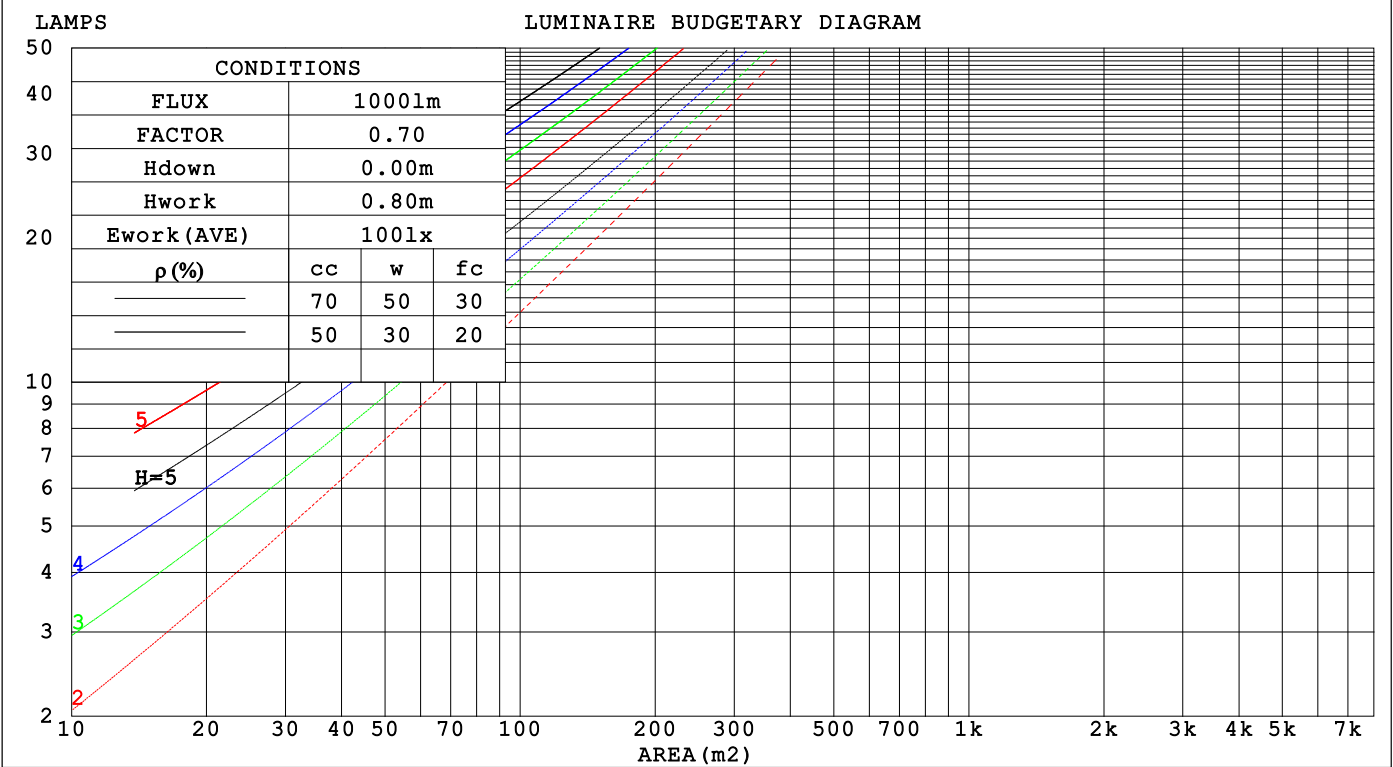
C Range: 0 - 360DEG
C Interval: 30.0DEG
Test Speed: HIGH
Temperature:25.3℃
Operators:
Test Date:2025-04-16

γ Range: 0 - 180DEG
γ Interval: 1.0DEG
Test System:EVERFINE GO-2000B_V1 SYSTEM V2.00.488
Humidity:65.0%
Test Distance:6.360m [K=1.0000]
Remarks:

CU AND LUMINAIRE BUDGETARY ESTIMATE DIAGRAM

Test:U:48.00V I:0.2449A P:11.76W PF:1.000 Freq:0Hz		
Lamp Flux:736.964x1 lm		
NAME: SF34-48V-2835-96-CC-2200K-80	TYPE:	WEIGHT:
SPEC.:	DIM.: Length=1m	SERIAL No.:
MFR.: OLYMPIA lighting	SUR.:	Shielding Angle:

pcc	80%			70%			50%			30%			10%			0
pw	50%	30%	10%	50%	30%	10%	50%	30%	10%	50%	30%	10%	50%	30%	10%	0
pfc	20%			20%			20%			20%			20%			0
RCR	RCR:Room Cavity Ratio			Coefficients of Utilization(CU)												
0.0	1.18	1.18	1.18	1.15	1.15	1.15	1.09	1.09	1.09	1.03	1.03	1.03	.98	.98	.98	.96
1.0	1.02	.98	.94	.99	.95	.92	.94	.91	.88	.90	.87	.85	.86	.83	.81	.79
2.0	.89	.82	.76	.86	.80	.74	.82	.77	.72	.78	.74	.70	.75	.71	.68	.65
3.0	.78	.69	.63	.76	.68	.62	.72	.66	.60	.69	.63	.59	.66	.61	.57	.55
4.0	.69	.60	.53	.67	.59	.52	.64	.57	.51	.61	.55	.50	.59	.53	.49	.47
5.0	.61	.52	.45	.60	.51	.45	.57	.50	.44	.55	.48	.43	.53	.47	.42	.40
6.0	.55	.46	.40	.54	.45	.39	.52	.44	.39	.50	.43	.38	.48	.42	.37	.35
7.0	.50	.41	.35	.49	.41	.35	.47	.39	.34	.45	.38	.34	.43	.38	.33	.31
8.0	.45	.37	.31	.45	.36	.31	.43	.36	.30	.41	.35	.30	.40	.34	.30	.28
9.0	.42	.33	.28	.41	.33	.28	.40	.32	.27	.38	.32	.27	.37	.31	.27	.25
10.0	.38	.31	.25	.38	.30	.25	.37	.30	.25	.35	.29	.24	.34	.28	.24	.22



C Range: 0 - 360DEG
C Interval: 30.0DEG
Test Speed: HIGH
Temperature:25.3℃
Operators:
Test Date:2025-04-16

γ Range: 0 - 180DEG
γ Interval: 1.0DEG
Test System:EVERFINE GO-2000B_V1 SYSTEM V2.00.488
Humidity:65.0%
Test Distance:6.360m [K=1.0000]
Remarks:

WEC AND CCEC

Test:U:48.00V I:0.2449A P:11.76W PF:1.000 Freq:0Hz Lamp Flux:736.964x1 lm		
NAME: SF34-48V-2835-96-CC-2200K-80	TYPE:	WEIGHT:
SPEC.:	DIM.: Length=1m	SERIAL No.:
MFR.: OLympia lighting	SUR.:	Shielding Angle:

pcc	80%			70%			50%			30%			10%			0														
pw	50%	30%	10%	50%	30%	10%	50%	30%	10%	50%	30%	10%	50%	30%	10%	0														
pfc	20%			20%			20%			20%			20%			0														
RCR	RCR:Room Cavity Ratio															Wall Exitance Coefficients(WEC)														
0.0																														
1.0	.324	.184	.058	.316	.180	.057	.300	.172	.055	.286	.165	.053	.273	.158	.051															
2.0	.300	.164	.050	.292	.161	.050	.279	.155	.048	.266	.149	.047	.254	.144	.045															
3.0	.275	.146	.044	.268	.144	.043	.256	.139	.042	.245	.134	.041	.234	.130	.040															
4.0	.252	.131	.039	.246	.129	.038	.235	.125	.037	.225	.121	.036	.216	.117	.036															
5.0	.232	.118	.034	.227	.117	.034	.217	.113	.033	.208	.110	.033	.200	.107	.032															
6.0	.215	.108	.031	.210	.106	.031	.201	.103	.030	.193	.100	.030	.185	.098	.029															
7.0	.200	.099	.028	.195	.097	.028	.187	.095	.027	.180	.092	.027	.173	.090	.026															
8.0	.186	.091	.026	.182	.090	.025	.175	.088	.025	.168	.085	.025	.162	.083	.024															
9.0	.174	.084	.024	.171	.083	.023	.164	.081	.023	.158	.079	.023	.152	.077	.022															
10.0	.164	.079	.022	.161	.078	.022	.155	.076	.021	.149	.074	.021	.144	.072	.021															

pcc	80%			70%			50%			30%			10%			0
pw	50%	30%	10%	50%	30%	10%	50%	30%	10%	50%	30%	10%	50%	30%	10%	0
pfc	20%			20%			20%			20%			20%			0
RCR	RCR:Room Cavity Ratio						Ceiling Cavity Exitance Coefficients (CCEC)									
0.0	.221	.221	.221	.189	.189	.189	.129	.129	.129	.074	.074	.074	.024	.024	.024	
1.0	.212	.187	.164	.181	.160	.141	.124	.110	.097	.071	.064	.057	.023	.021	.018	
2.0	.204	.163	.128	.175	.140	.110	.120	.097	.077	.069	.056	.045	.022	.018	.015	
3.0	.196	.145	.104	.168	.125	.091	.116	.087	.064	.067	.051	.037	.021	.017	.012	
4.0	.189	.132	.089	.162	.114	.077	.111	.080	.054	.064	.047	.032	.021	.015	.011	
5.0	.181	.122	.078	.156	.105	.068	.107	.074	.048	.062	.043	.028	.020	.014	.009	
6.0	.174	.114	.070	.149	.098	.061	.103	.069	.043	.060	.040	.026	.019	.013	.008	
7.0	.167	.107	.064	.144	.092	.056	.099	.065	.040	.058	.038	.024	.019	.013	.008	
8.0	.161	.101	.060	.138	.088	.052	.096	.061	.037	.056	.036	.022	.018	.012	.007	
9.0	.154	.096	.057	.133	.083	.049	.092	.059	.035	.054	.035	.021	.017	.011	.007	
10.0	.149	.092	.054	.128	.080	.047	.089	.056	.033	.052	.033	.020	.017	.011	.007	

C Range: 0 - 360DEG
C Interval: 30.0DEG
Test Speed: HIGH
Temperature:25.3℃
Operators:
Test Date:2025-04-16

γ Range: 0 - 180DEG
γ Interval: 1.0DEG
Test System:EVERFINE GO-2000B_V1 SYSTEM V2.00.488
Humidity:65.0%
Test Distance:6.360m [K=1.0000]
Remarks:

UGR(Unified Glare Rating) Table

Test:U:48.00V I:0.2449A P:11.76W PF:1.000 Freq:0Hz Lamp Flux:736.964x1 lm										
NAME: SF34-48V-2835-96-CC-2200K-80					TYPE:			WEIGHT:		
SPEC.:					DIM.: Length=1m			SERIAL No.:		
MFR.: OLympia lighting					SUR.:			Shielding Angle:		
ceiling/cavity	0.7	0.7	0.5	0.5	0.3	0.7	0.7	0.5	0.5	0.3
walls	0.5	0.3	0.5	0.3	0.3	0.5	0.3	0.5	0.3	0.3
working plane	0.2	0.2	0.2	0.2	0.2	0.2	0.2	0.2	0.2	0.2
Room dimensions	Viewed crosswise					Viewed endwise				
x = 2H y = 2H	21.4	22.9	21.7	23.2	23.5	21.6	23.1	21.9	23.4	23.6
3H	23.0	24.4	23.4	24.7	25.0	23.3	24.7	23.6	25.0	25.3
4H	23.7	25.0	24.1	25.3	25.7	24.0	25.4	24.4	25.7	26.0
6H	24.2	25.5	24.6	25.8	26.2	24.7	25.9	25.1	26.3	26.6
8H	24.4	25.6	24.8	26.0	26.3	24.9	26.1	25.3	26.5	26.9
12H	24.5	25.7	24.9	26.0	26.4	25.1	26.3	25.5	26.6	27.0
4H 2H	22.1	23.4	22.4	23.7	24.0	22.2	23.5	22.6	23.8	24.2
3H	23.9	25.0	24.3	25.4	25.8	24.1	25.2	24.5	25.6	26.0
4H	24.7	25.7	25.1	26.1	26.5	25.0	26.0	25.4	26.4	26.8
6H	25.3	26.3	25.8	26.7	27.2	25.8	26.7	26.2	27.1	27.6
8H	25.6	26.5	26.1	26.9	27.4	26.1	27.0	26.6	27.4	27.9
12H	25.8	26.6	26.3	27.0	27.5	26.4	27.1	26.8	27.6	28.1
8H 4H	25.0	25.9	25.5	26.3	26.8	25.3	26.1	25.8	26.6	27.1
6H	25.9	26.6	26.4	27.1	27.6	26.2	27.0	26.7	27.4	28.0
8H	26.2	26.8	26.7	27.3	27.9	26.7	27.3	27.2	27.8	28.3
12H	26.5	27.0	27.0	27.5	28.1	27.0	27.6	27.6	28.1	28.7
12H 4H	25.0	25.8	25.5	26.3	26.8	25.3	26.1	25.8	26.6	27.0
6H	26.0	26.6	26.5	27.1	27.6	26.3	27.0	26.8	27.5	28.0
8H	26.4	26.9	26.9	27.4	28.0	26.8	27.3	27.3	27.9	28.4
Variations with the observer position at spacings(CIE Pub.117):										
S = 1.0H	+ 0.1 / - 0.2					+ 0.1 / - 0.2				
1.5H	+ 0.2 / - 0.3					+ 0.2 / - 0.3				
2.0H	+ 0.1 / - 0.3					+ 0.1 / - 0.3				

CIE Pub.117, 737.0 lm Total Lamp Luminous Flux Correct (8log(F/F0) = -1.1)
Area: 0.022 m2

C Range: 0 - 360DEG
C Interval: 30.0DEG
Test Speed: HIGH
Temperature:25.3℃
Operators:
Test Date:2025-04-16

γ Range: 0 - 180DEG
γ Interval: 1.0DEG
Test System:EVERFINE GO-2000B_V1 SYSTEM V2.00.488
Humidity:65.0%
Test Distance:6.360m [K=1.0000]
Remarks:

UTILIZATION FACTORS TABLE

Test:U:48.00V I:0.2449A P:11.76W PF:1.000 Freq:0Hz Lamp Flux:736.964x1 lm		
NAME: SF34-48V-2835-96-CC-2200K-80	TYPE:	WEIGHT:
SPEC.:	DIM.: Length=1m	SERIAL No.:
MFR.: OLympia lighting	SUR.:	Shielding Angle:

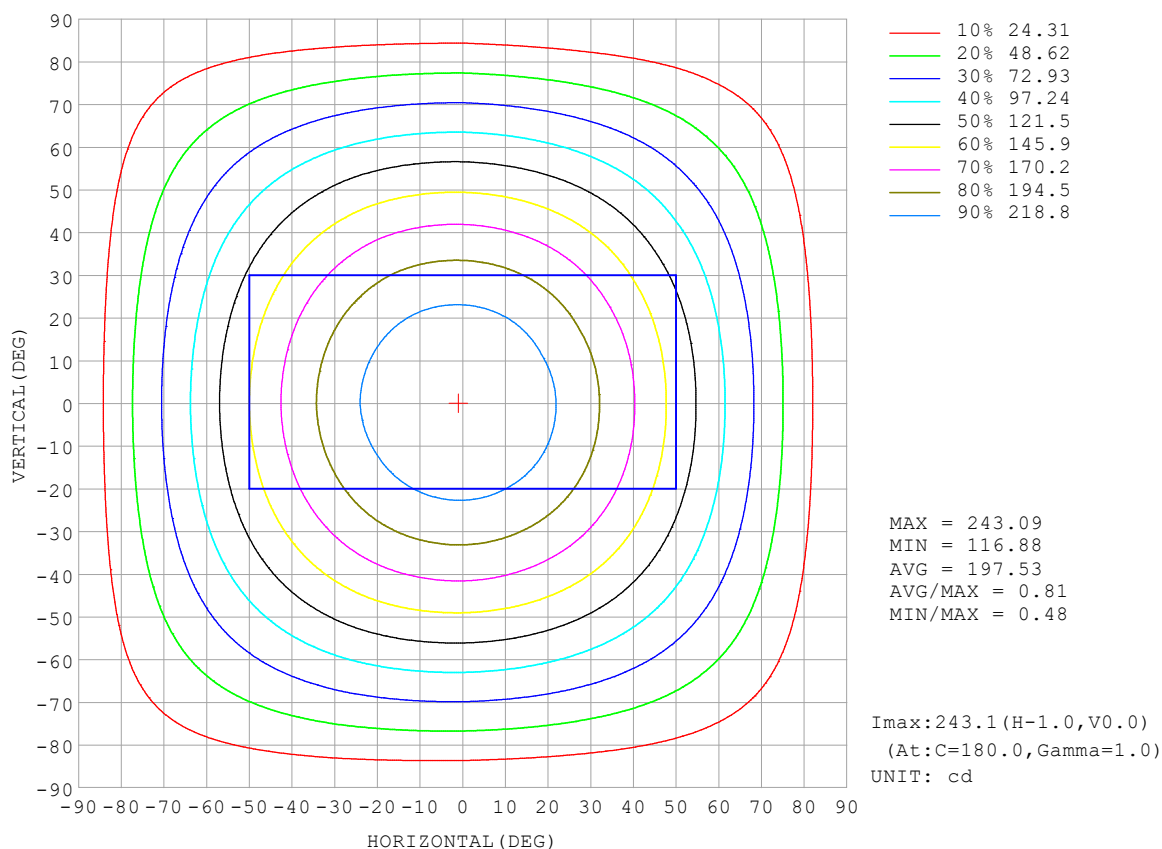
REFLECTANCE										
Ceiling	0.8	0.8	0.8	0.7	0.7	0.7	0.5	0.5	0.5	0
Walls	0.7	0.5	0.3	0.7	0.5	0.3	0.7	0.5	0.3	0
Working plane	0.2	0.2	0.2	0.2	0.2	0.2	0.2	0.2	0.2	0
ROOM INDEX	UTILIZATION FACTORS (PERCENT) $k(RI) \times RCR = 5$									
$k = 0.60$	56	44	37	55	44	37	53	43	37	30
0.80	66	54	46	64	53	46	62	52	45	38
1.00	74	62	55	72	62	54	70	63	54	46
1.25	81	70	63	79	69	62	76	67	61	53
1.50	86	76	68	84	74	68	80	72	66	58
2.00	93	84	77	91	82	76	87	80	74	65
2.50	97	89	82	94	87	81	90	84	79	69
3.00	100	93	87	98	91	86	93	88	83	73
4.00	104	98	93	102	96	92	97	92	88	78
5.00	107	102	97	104	99	95	99	95	92	81
ROOM INDEX	UF (total)									Direct
According to DIN EN 13032-2 2004			Suspended					SHRNOM = 1.25		

C Range: 0 - 360DEG
 C Interval: 30.0DEG
 Test Speed: HIGH
 Temperature: 25.3 °C
 Operators:
 Test Date: 2025-04-16

γ Range: 0 - 180DEG
 γ Interval: 1.0DEG
 Test System: EVERFINE GO-2000B_V1 SYSTEM V2.00.488
 Humidity: 65.0%
 Test Distance: 6.360m [K=1.0000]
 Remarks:

ISOCANDELA DIAGRAM

Test:U:48.00V I:0.2449A P:11.76W PF:1.000 Freq:0Hz Lamp Flux:736.964x1 lm		
NAME: SF34-48V-2835-96-CC-2200K-80	TYPE:	WEIGHT:
SPEC.:	DIM.: Length=1m	SERIAL No.:
MFR.: OLympia lighting	SUR.:	Shielding Angle:

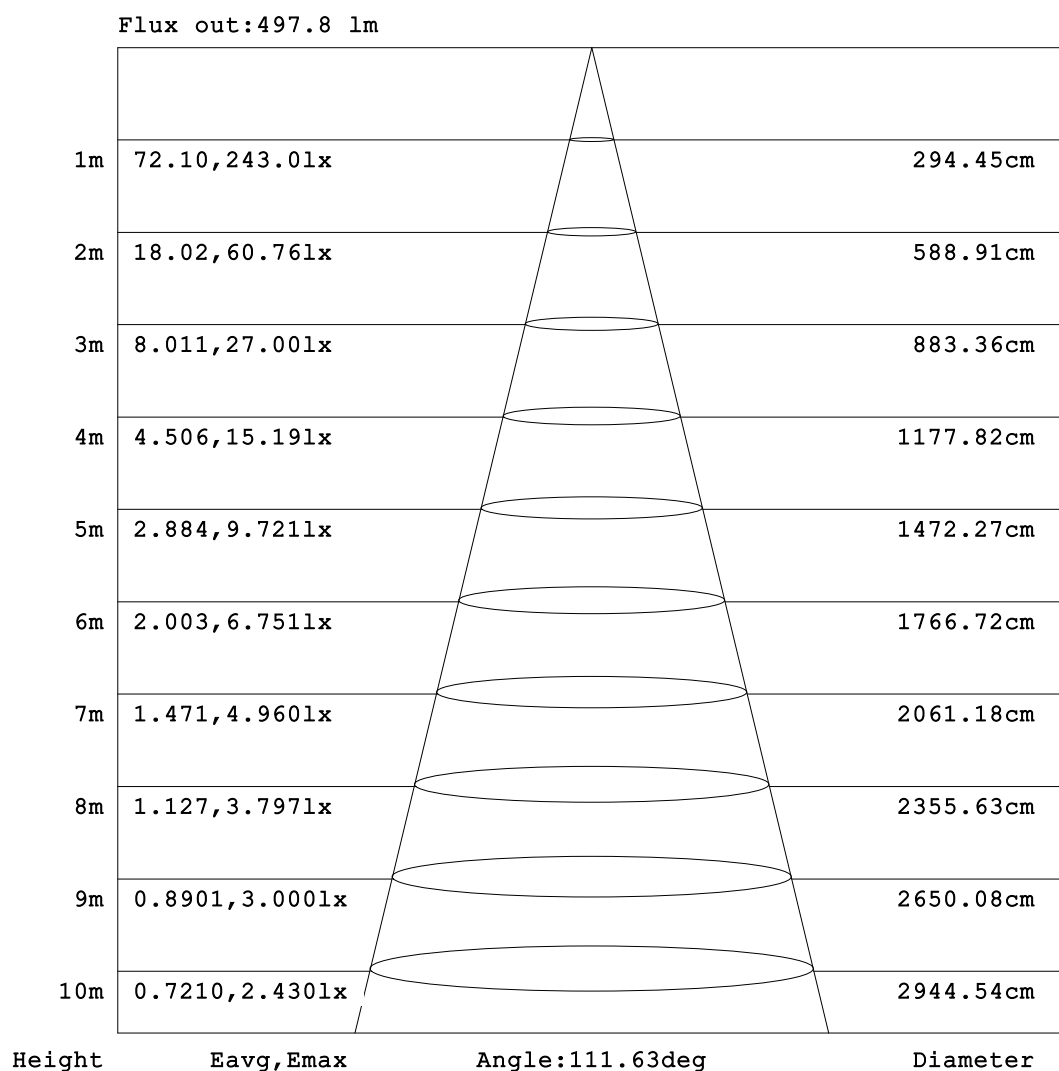


C Range: 0 - 360DEG
C Interval: 30.0DEG
Test Speed: HIGH
Temperature:25.3℃
Operators:
Test Date:2025-04-16

γ Range: 0 - 180DEG
γ Interval: 1.0DEG
Test System:EVERFINE GO-2000B_V1 SYSTEM V2.00.488
Humidity:65.0%
Test Distance:6.360m [K=1.0000]
Remarks:

AAI Figure

Test:U:48.00V I:0.2449A P:11.76W PF:1.000 Freq:0Hz Lamp Flux:736.964x1 lm		
NAME: SF34-48V-2835-96-CC-2200K-80	TYPE:	WEIGHT:
SPEC.:	DIM.: Length=1m	SERIAL No.:
MFR.: OLympia lighting	SUR.:	Shielding Angle:



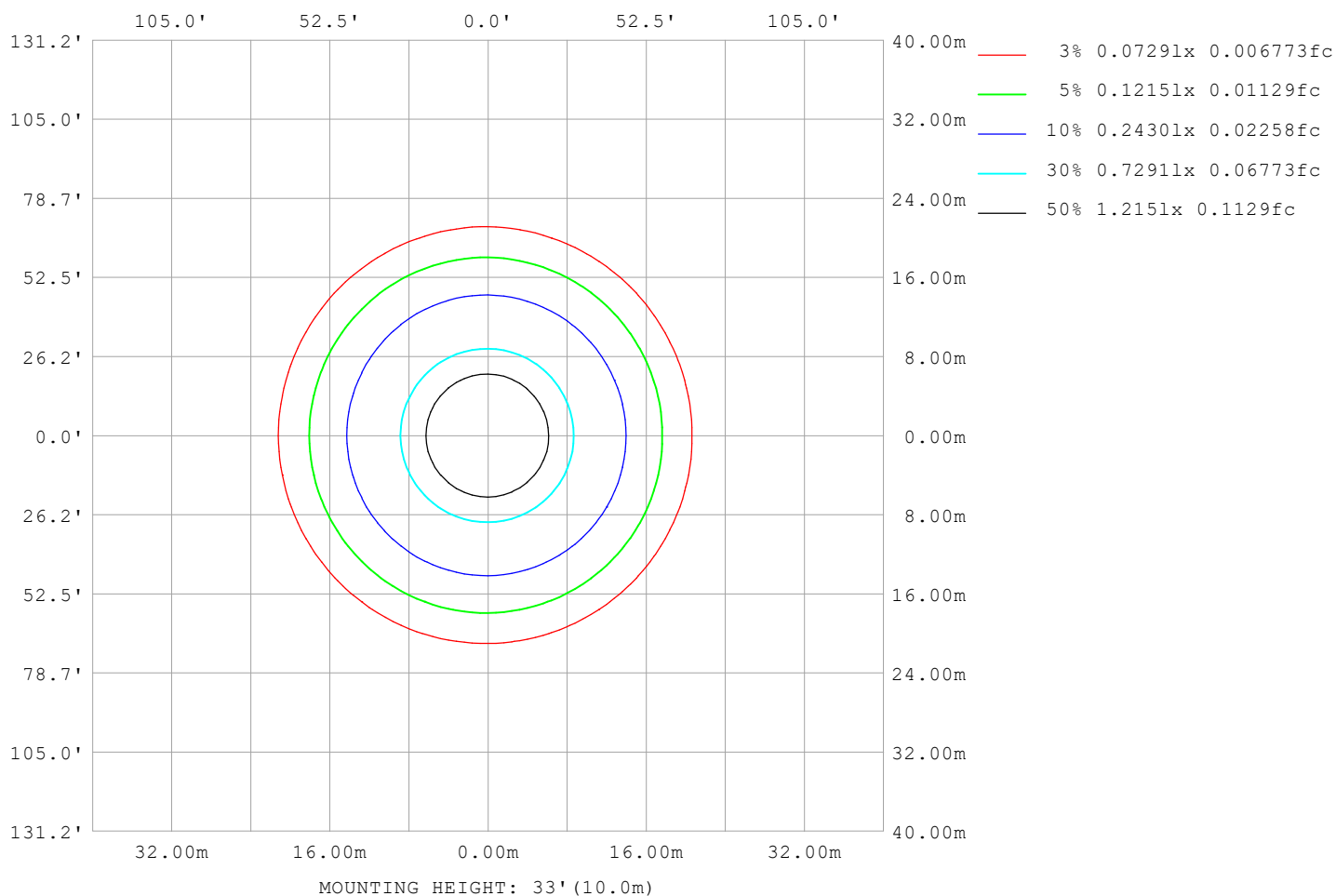
Note:The Curves indicate the illuminated area and the average illumination when the luminaire is at different distance.

C Range: 0 - 360DEG
C Interval: 30.0DEG
Test Speed: HIGH
Temperature:25.3℃
Operators:
Test Date:2025-04-16

γ Range: 0 - 180DEG
γ Interval: 1.0DEG
Test System:EVERFINE GO-2000B_V1 SYSTEM V2.00.488
Humidity:65.0%
Test Distance:6.360m [K=1.0000]
Remarks:

ISOLUX DIAGRAM

Test:U:48.00V I:0.2449A P:11.76W PF:1.000 Freq:0Hz Lamp Flux:736.964x1 lm		
NAME: SF34-48V-2835-96-CC-2200K-80	TYPE:	WEIGHT:
SPEC.:	DIM.: Length=1m	SERIAL No.:
MFR.: OLympia lighting	SUR.:	Shielding Angle:



C Range: 0 - 360DEG
C Interval: 30.0DEG
Test Speed: HIGH
Temperature: 25.3°C
Operators:
Test Date: 2025-04-16

γ Range: 0 - 180DEG
γ Interval: 1.0DEG
Test System: EVERFINE GO-2000B_V1 SYSTEM V2.00.488
Humidity: 65.0%
Test Distance: 6.360m [K=1.0000]
Remarks:

LED Avg.L Report

Test:U:48.00V I:0.2449A P:11.76W PF:1.000 Freq:0Hz Lamp Flux:736.964x1 lm		
NAME: SF34-48V-2835-96-CC-2200K-80	TYPE:	WEIGHT:
SPEC.:	DIM.: Length=1m	SERIAL No.:
MFR.: OLympia lighting	SUR.:	Shielding Angle:

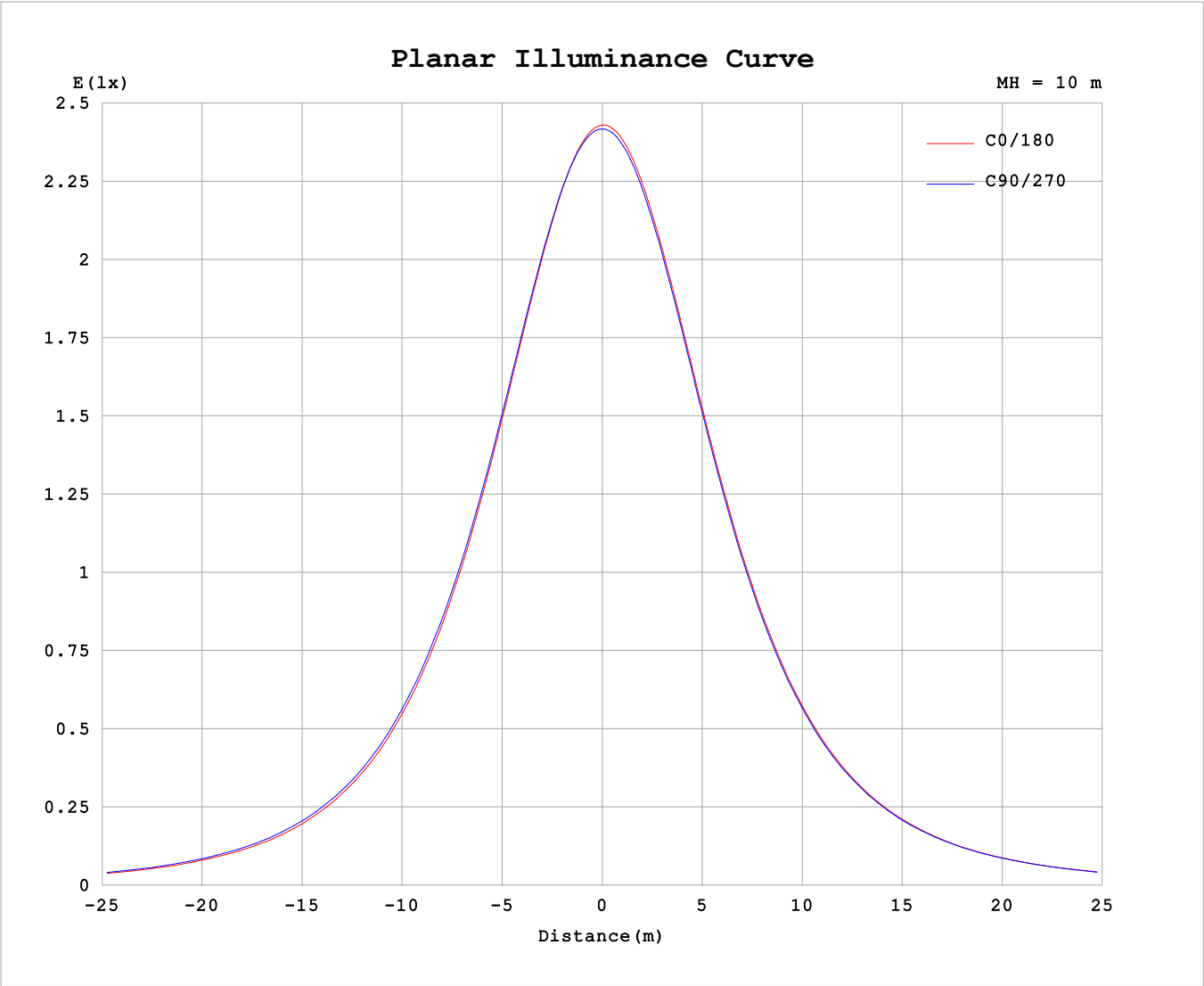
AvgL	cd/m2
L_0~180 (65) av	9503
L_0~180 (75) av	9260
L_0~180 (85) av	9181
L_90~270 (65) av	9807
L_90~270 (75) av	9811
L_90~270 (85) av	10873
L_45 (65) av	9662
L_45 (75) av	9510
L_45 (85) av	9850

Standard: GB/T 29293-2012

C Range: 0 - 360DEG
C Interval: 30.0DEG
Test Speed: HIGH
Temperature:25.3℃
Operators:
Test Date:2025-04-16

γ Range: 0 - 180DEG
γ Interval: 1.0DEG
Test System:EVERFINE GO-2000B_V1 SYSTEM V2.00.488
Humidity:65.0%
Test Distance:6.360m [K=1.0000]
Remarks:

Planar Illuminance Curve



C Range: 0 - 360DEG	γ Range: 0 - 180DEG
C Interval: 30.0DEG	γ Interval: 1.0DEG
Test Speed: HIGH	Test System:EVERFINE GO-2000B_V1 SYSTEM V2.00.488
Temperature:25.3℃	Humidity:65.0%
Operators:	Test Distance:6.360m [K=1.0000]
Test Date:2025-04-16	Remarks:

LUMINOUS DISTRIBUTION INTENSITY DATA

Test:U:48.00V I:0.2449A P:11.76W PF:1.000 Freq:0Hz Lamp Flux:736.964x1 lm																	
NAME: SF34-48V-2835-96-CC-2200K-80									TYPE:						WEIGHT:		
SPEC.:									DIM.: Length=1m						SERIAL No.:		
MFR.: OLYMPIA lighting									SUR.:						Shielding Angle:		

Table--1

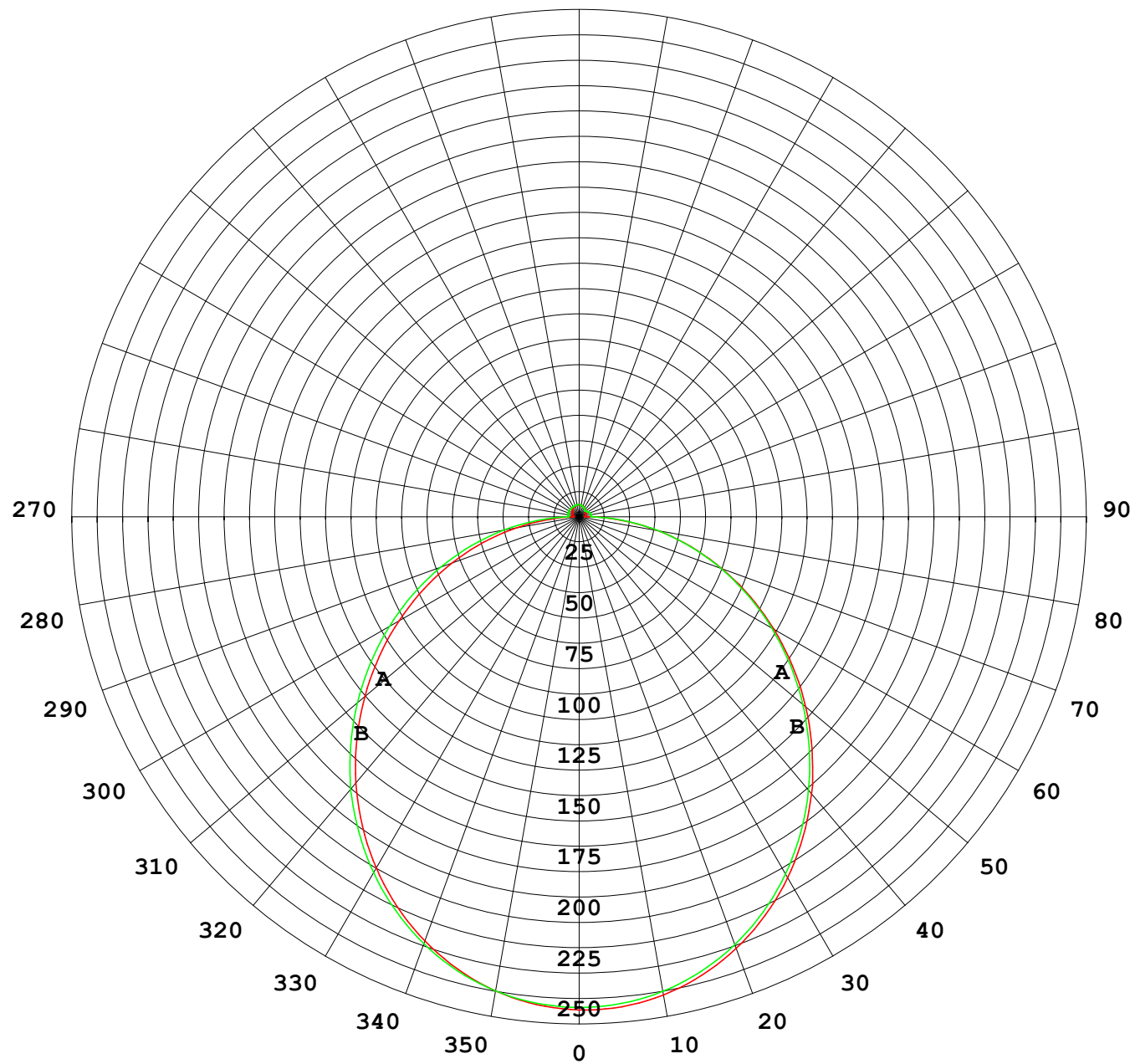
UNIT: cd

C (DEG) γ (DEG)	0	30	60	90	120	150	180	210	240	270	300	330						
0	242	242	242	242	242	242	242	242	242	242	242	242						
5	240	241	241	241	241	241	241	241	241	241	241	241						
10	236	237	237	238	238	238	238	238	238	238	237	237						
15	230	231	231	232	232	233	233	233	233	232	232	231						
20	222	222	223	224	225	225	225	225	225	225	224	222						
25	211	212	213	214	215	216	216	216	216	215	214	212						
30	199	200	201	203	204	205	205	205	205	204	202	200						
35	186	187	188	190	191	192	192	192	192	191	189	187						
40	170	172	173	176	176	177	177	177	178	176	174	172						
45	154	156	158	159	161	162	162	162	162	160	158	156						
50	137	139	141	143	145	145	145	145	146	144	142	139						
55	120	122	124	126	127	128	128	128	129	127	125	122						
60	102	104	106	108	110	110	110	110	111	110	107	104						
65	84.2	86.0	88.1	90.4	91.9	92.5	92.5	92.6	92.7	92.0	89.0	85.9						
70	66.3	68.1	70.3	72.6	74.0	74.5	74.6	74.7	74.8	74.4	71.0	68.0						
75	48.7	50.3	52.5	54.9	56.3	56.7	56.8	56.9	57.0	56.9	53.3	50.3						
80	31.2	32.7	34.9	37.3	38.5	38.9	39.0	39.1	39.4	39.5	35.7	32.8						
85	13.9	15.3	17.2	19.7	20.8	21.2	21.3	21.4	21.8	22.0	18.3	15.3						
90	2.84	3.67	4.82	5.35	5.22	4.98	4.80	4.71	5.16	6.34	4.07	2.84						
95	2.95	3.85	4.94	5.49	4.95	3.82	2.73	2.86	3.83	5.91	3.90	2.80						
100	3.21	4.05	5.09	5.62	5.10	3.96	2.89	2.99	3.98	5.95	4.05	2.99						
105	3.46	4.24	5.23	5.71	5.24	4.14	3.09	3.17	4.08	5.94	4.11	3.18						
110	3.71	4.43	5.33	5.76	5.35	4.34	3.31	3.37	4.09	5.85	4.11	3.37						
115	3.95	4.59	5.42	5.80	5.44	4.51	3.54	3.58	4.10	5.44	4.00	3.55						
120	4.19	4.75	5.49	5.83	5.52	4.68	3.77	3.78	4.09	5.01	3.98	3.74						
125	4.41	4.89	5.53	5.83	5.58	4.84	3.98	3.98	4.10	4.62	3.90	3.97						
130	4.62	5.02	5.58	5.83	5.62	4.98	4.21	4.20	4.21	4.32	3.99	4.18						
135	4.81	5.14	5.62	5.83	5.65	5.10	4.43	4.42	4.39	4.23	4.19	4.12						
140	4.99	5.25	5.65	5.84	5.70	5.23	4.65	4.64	4.62	4.41	4.40	4.34						
145	5.16	5.35	5.69	5.87	5.74	5.36	4.86	4.88	4.85	4.64	4.61	4.55						
150	5.33	5.45	5.73	5.89	5.79	5.49	5.08	5.09	5.09	4.99	4.84	4.77						
155	5.50	5.57	5.77	5.92	5.83	5.62	5.30	5.32	5.31	5.23	5.19	4.99						
160	5.67	5.70	5.82	5.95	5.87	5.76	5.50	5.52	5.53	5.45	5.38	5.21						
165	5.82	5.83	5.86	5.98	5.92	5.90	5.70	5.72	5.74	5.66	5.57	5.43						
170	5.95	5.95	5.95	6.02	6.00	6.00	5.89	5.89	5.92	5.85	5.77	5.69						
175	6.02	6.05	6.05	6.12	6.07	6.01	6.00	6.01	6.08	6.02	5.95	5.84						
180	6.06	6.08	6.13	6.16	6.09	6.01	6.07	6.07	6.14	6.15	6.09	5.99						

C Range: 0 - 360DEG
C Interval: 30.0DEG
Test Speed: HIGH
Temperature:25.3℃
Operators:
Test Date:2025-04-16

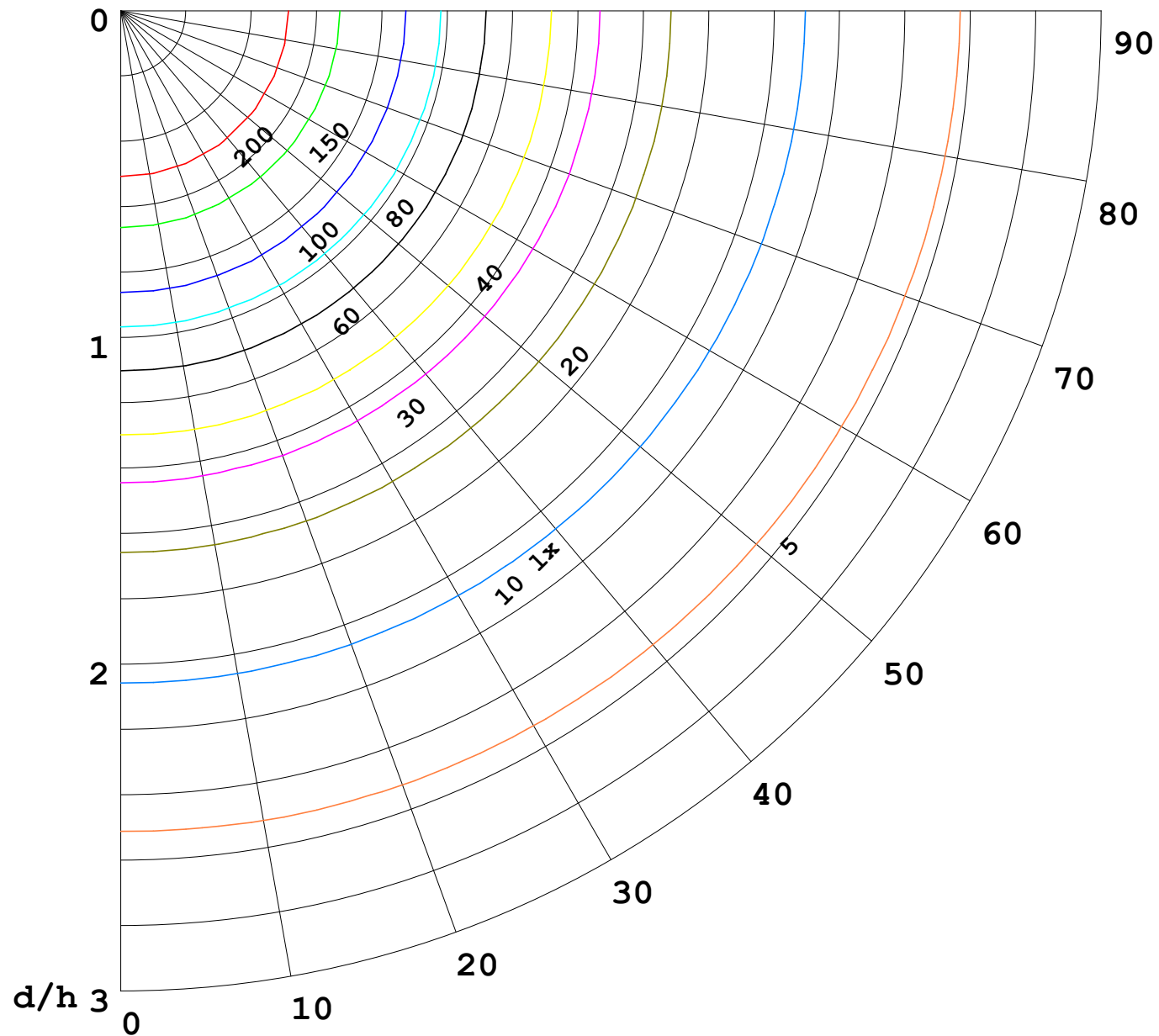
γ Range: 0 - 180DEG
γ Interval: 1.0DEG
Test System:EVERFINE GO-2000B_V1 SYSTEM V2.00.488
Humidity:65.0%
Test Distance:6.360m [K=1.0000]
Remarks:

I (cd)



1000 lm

$\kappa = 1$



F = 1000 lm
 K = 0.7
 Hcc = 0.8 m
 Hfc = 0.0 m
 Eave = 100 lx

	Pcc	Pw	Pfc
—————	70	50	30
—————	50	30	20

