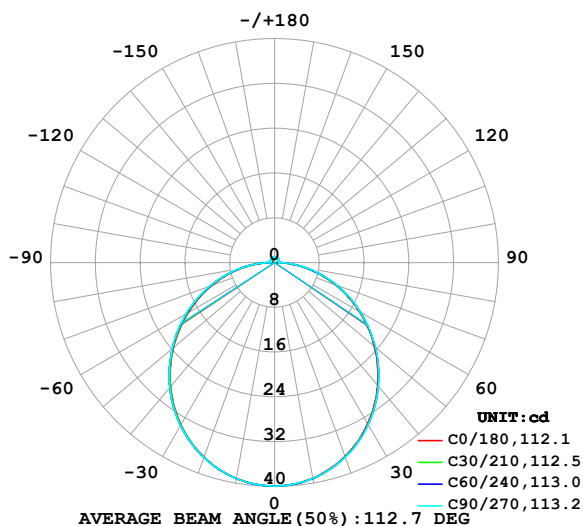


LUMINAIRE PHOTOMETRIC TEST REPORT

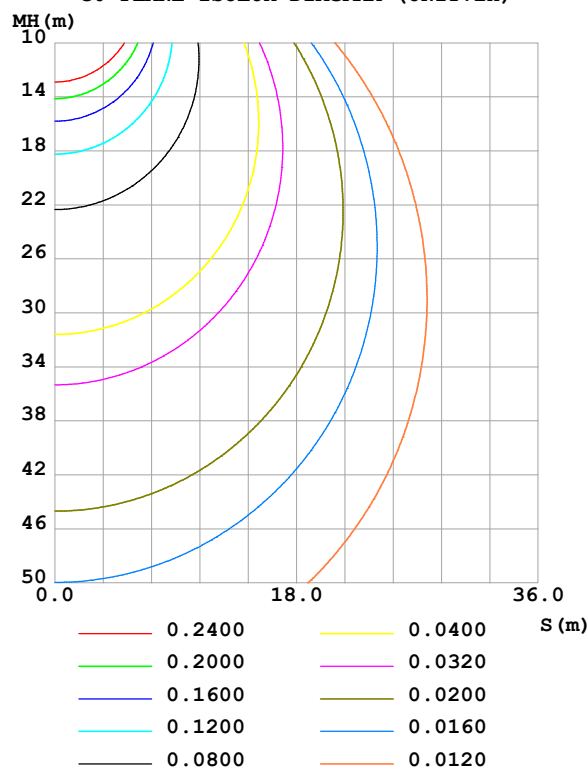
Test:U:48.00V I:0.0427A P:2.050W PF:1.000 Freq:0Hz Lamp Flux:121.97x1 lm		
NAME: SF34-48V-2835-96-CC-2700K	TYPE:	WEIGHT:
SPEC.:	DIM.: Length=1m	SERIAL No.:
MFR.: OLympia lighting	SUR.:	Shielding Angle:

DATA OF LAMP		PHOTOMETRIC DATA				Eff: 59.51 lm/W
MODEL	2835	I _{max} (cd)	39.91	S/MH(C0/180)	1.25	
NOMINAL POWER(W)	2	LOR(%)	100.0	S/MH(C90/270)	1.25	
RATED VOLTAGE(V)	48	TOTAL FLUX(lm)	121.97	η UP,DN(C0-180)	2.0,47.6	
NOMINAL FLUX(lm)	121.97	CIE CLASS	DIRECT	η UP,DN(C180-360)	2.1,48.4	
LAMPS INSIDE	1	η up(%)	4.1	CIBSE SHR NOM	1.25	
TEST VOLTAGE(V)		η down(%)	95.9	CIBSE SHR MAX	1.35	

LUMINOUS INTENSITY DISTRIBUTION DIAGRAM



C0 PLANE ISOLUX DIAGRAM (UNIT:lx)



C Range: 0 - 360DEG
C Interval: 30.0DEG
Test Speed: HIGH
Temperature:25.3℃
Operators:
Test Date:2025-04-03

γ Range: 0 - 180DEG
γ Interval: 1.0DEG
Test System:EVERFINE GO-2000B_V1 SYSTEM V2.00.488
Humidity:65.0%
Test Distance:6.360m [K=1.0000]
Remarks:

ZONAL FLUX DIAGRAM

ZONAL FLUX DIAGRAM:

γ	C0	C45	C90	C135	C180	C225	C270	C315	γ	Φ zone	Φ total	%lum, lamp
10	39.12	39.16	39.16	39.17	39.18	39.18	39.19	39.19	0- 10	3.775	3.775	3.09,3.09
20	36.82	36.93	36.96	36.95	36.97	37.00	37.02	36.98	10- 20	10.79	14.56	11.9,11.9
30	33.26	33.40	33.46	33.44	33.48	33.56	33.61	33.52	20- 30	16.29	30.86	25.3,25.3
40	28.64	28.80	28.87	28.86	28.91	29.07	29.15	29.01	30- 40	19.59	50.44	41.4,41.4
50	23.26	23.43	23.52	23.49	23.58	23.77	23.90	23.73	40- 50	20.31	70.76	58,58
60	17.47	17.64	17.73	17.71	17.80	18.05	18.24	18.01	50- 60	18.55	89.31	73.2,73.2
70	11.51	11.70	11.85	11.80	11.91	12.15	12.31	12.04	60- 70	14.73	104.0	85.3,85.3
80	5.634	5.811	5.977	5.978	6.097	6.311	6.468	6.167	70- 80	9.471	113.5	93.1,93.1
90	0.5881	0.6850	0.7679	0.7956	0.8452	0.9412	0.9325	0.7943	80- 90	3.516	117.0	95.9,95.9
100	0.5451	0.6784	0.7621	0.6769	0.4933	0.7014	0.8834	0.7115	90-100	0.7417	117.8	96.6,96.6
110	0.6201	0.7188	0.7188	0.7259	0.5683	0.7577	0.9094	0.7591	100-110	0.7482	118.5	97.2,97.2
120	0.7008	0.7577	0.7333	0.7663	0.6462	0.7996	0.9209	0.8038	110-120	0.7446	119.3	97.8,97.8
130	0.7701	0.7938	0.7910	0.8168	0.7126	0.8414	0.9296	0.8414	120-130	0.7124	120.0	98.4,98.4
140	0.8306	0.8198	0.8546	0.8760	0.7876	0.8790	0.9440	0.8731	130-140	0.6485	120.6	98.9,98.9
150	0.8797	0.8443	0.9239	0.9280	0.8596	0.9122	0.9555	0.9034	140-150	0.5507	121.2	99.3,99.3
160	0.9344	0.9179	0.9816	0.9770	0.9288	0.9511	0.9729	0.9352	150-160	0.4276	121.6	99.7,99.7
170	0.9490	0.9944	1.019	1.010	0.9548	0.9858	0.9902	0.9756	160-170	0.2742	121.9	99.9,99.9
180	0.9605	1.006	1.019	1.017	0.9634	1.005	1.016	1.010	170-180	0.0948	122.0	100,100
DEG	LUMINOUS INTENSITY:cd									UNIT:lm		

Conical surface Flux(90deg): 60.671 lm

%lum = 49.7%

%lamp = 49.7%

Conical surface Flux(130deg): 97.26 lm

%lum = 79.7%

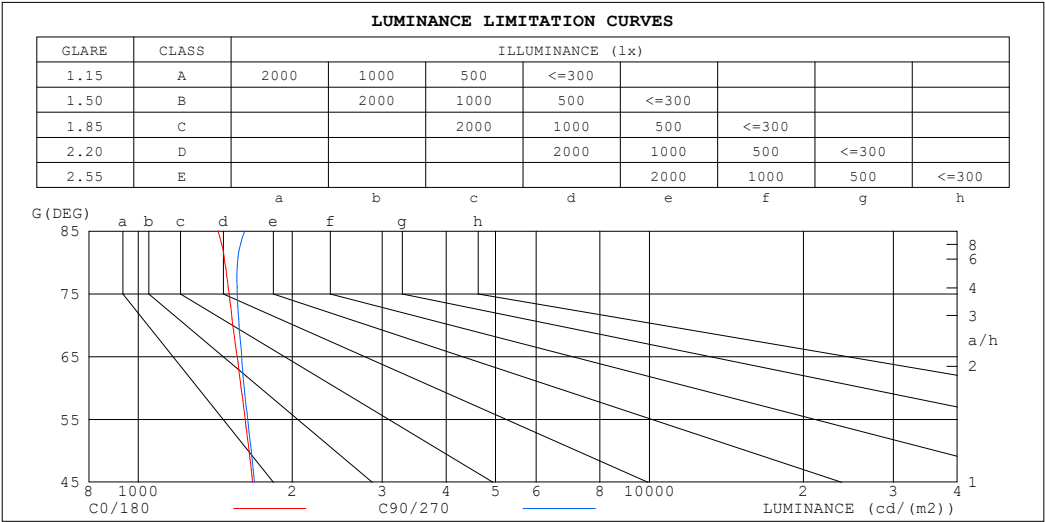
%lamp = 79.7%

C Range: 0 - 360DEG
 C Interval: 30.0DEG
 Test Speed: HIGH
 Temperature:25.3℃
 Operators:
 Test Date:2025-04-03

γ Range: 0 - 180DEG
 γ Interval: 1.0DEG
 Test System:EVERFINE GO-2000B_V1 SYSTEM V2.00.488
 Humidity:65.0%
 Test Distance:6.360m [K=1.0000]
 Remarks:

LUMINANCE LIMITATION CURVES

Test:U:48.00V I:0.0427A P:2.050W PF:1.000 Freq:0Hz Lamp Flux:121.97x1 lm		
NAME: SF34-48V-2835-96-CC-2700K	TYPE:	WEIGHT:
SPEC.:	DIM.: Length=1m	SERIAL No.:
MFR.: OLympia lighting	SUR.:	Shielding Angle:



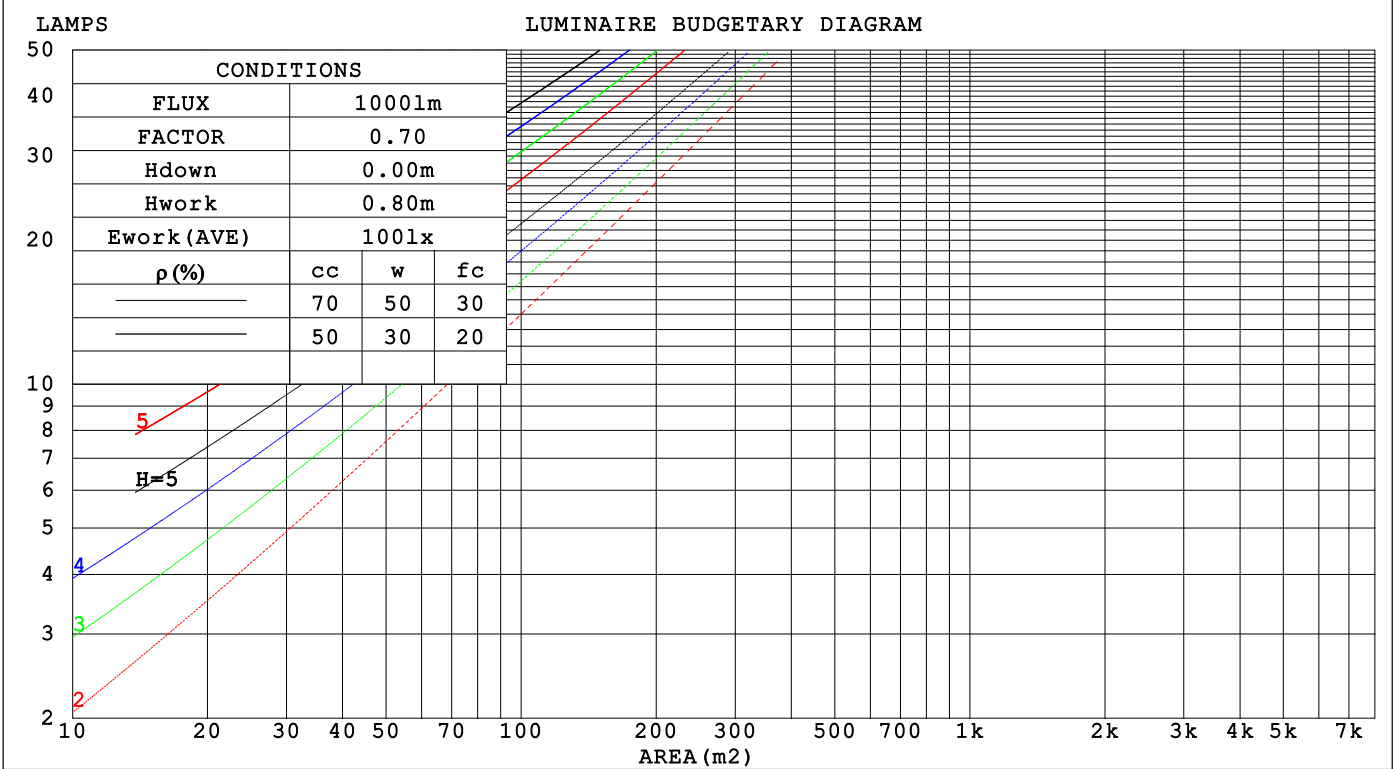
LUMINANCE cd/(m2)		
G (DEG)	C0/180	C90/270
85	1432	1617
80	1476	1564
75	1506	1561
70	1531	1574
65	1561	1593
60	1589	1611
55	1618	1636
50	1646	1663
45	1674	1688

C Range: 0 - 360DEG	γ Range: 0 - 180DEG
C Interval: 30.0DEG	γ Interval: 1.0DEG
Test Speed: HIGH	Test System:EVERFINE GO-2000B_V1 SYSTEM V2.00.488
Temperature:25.3℃	Humidity:65.0%
Operators:	Test Distance:6.360m [K=1.0000]
Test Date:2025-04-03	Remarks:

CU AND LUMINAIRE BUDGETARY ESTIMATE DIAGRAM

Test:U:48.00V I:0.0427A P:2.050W PF:1.000 Freq:0Hz		
Lamp Flux:121.97x1 lm		
NAME: SF34-48V-2835-96-CC-2700K	TYPE:	WEIGHT:
SPEC.:	DIM.: Length=1m	SERIAL No.:
MFR.: OLYMPIA lighting	SUR.:	Shielding Angle:

pcc	80%			70%			50%			30%			10%			0
p _w	50%	30%	10%	50%	30%	10%	50%	30%	10%	50%	30%	10%	50%	30%	10%	0
p _{fc}	20%			20%			20%			20%			20%			0
RCR	RCR:Room Cavity Ratio Coefficients of Utilization(CU)															
0.0	1.18	1.18	1.18	1.15	1.15	1.15	1.09	1.09	1.09	1.03	1.03	1.03	.98	.98	.98	.96
1.0	1.02	.98	.94	.99	.95	.92	.94	.91	.88	.90	.87	.85	.86	.83	.81	.79
2.0	.89	.82	.76	.86	.80	.74	.82	.77	.72	.78	.74	.70	.75	.71	.68	.65
3.0	.78	.69	.63	.76	.68	.62	.72	.65	.60	.69	.63	.58	.66	.61	.57	.55
4.0	.69	.60	.53	.67	.59	.52	.64	.57	.51	.61	.55	.50	.58	.53	.49	.46
5.0	.61	.52	.45	.60	.51	.45	.57	.50	.44	.55	.48	.43	.53	.47	.42	.40
6.0	.55	.46	.39	.54	.45	.39	.52	.44	.38	.50	.43	.38	.48	.42	.37	.35
7.0	.50	.41	.35	.49	.40	.35	.47	.39	.34	.45	.38	.33	.43	.37	.33	.31
8.0	.45	.37	.31	.45	.36	.31	.43	.36	.30	.41	.35	.30	.40	.34	.29	.27
9.0	.42	.33	.28	.41	.33	.28	.39	.32	.27	.38	.32	.27	.37	.31	.27	.25
10.0	.38	.30	.25	.38	.30	.25	.36	.30	.25	.35	.29	.24	.34	.28	.24	.22



C Range: 0 - 360DEG
C Interval: 30.0DEG
Test Speed: HIGH
Temperature:25.3℃
Operators:
Test Date:2025-04-03

γ Range: 0 - 180DEG
γ Interval: 1.0DEG
Test System:EVERFINE GO-2000B_V1 SYSTEM V2.00.488
Humidity:65.0%
Test Distance:6.360m [K=1.0000]
Remarks:

WEC AND CCEC

Test:U:48.00V I:0.0427A P:2.050W PF:1.000 Freq:0Hz Lamp Flux:121.97x1 lm		
NAME: SF34-48V-2835-96-CC-2700K	TYPE:	WEIGHT:
SPEC.:	DIM.: Length=1m	SERIAL No.:
MFR.: OLympia lighting	SUR.:	Shielding Angle:

pcc	80%			70%			50%			30%			10%			0														
pw	50%	30%	10%	50%	30%	10%	50%	30%	10%	50%	30%	10%	50%	30%	10%	0														
pfc	20%			20%			20%			20%			20%			0														
RCR	RCR:Room Cavity Ratio															Wall Exitance Coefficients(WEC)														
0.0																														
1.0	.325	.185	.058	.316	.180	.057	.301	.172	.055	.286	.165	.053	.273	.158	.051															
2.0	.300	.164	.050	.293	.161	.050	.279	.155	.048	.266	.149	.047	.254	.144	.045															
3.0	.275	.146	.044	.269	.144	.043	.256	.139	.042	.245	.134	.041	.234	.130	.040															
4.0	.252	.131	.039	.247	.129	.038	.236	.125	.037	.225	.121	.036	.216	.117	.036															
5.0	.233	.118	.034	.227	.117	.034	.217	.113	.033	.208	.110	.033	.200	.107	.032															
6.0	.215	.108	.031	.210	.106	.031	.201	.103	.030	.193	.100	.030	.185	.098	.029															
7.0	.200	.099	.028	.196	.097	.028	.188	.095	.027	.180	.092	.027	.173	.090	.026															
8.0	.186	.091	.026	.182	.090	.025	.175	.088	.025	.168	.085	.025	.162	.083	.024															
9.0	.174	.084	.024	.171	.083	.023	.164	.081	.023	.158	.079	.023	.152	.077	.022															
10.0	.164	.079	.022	.161	.078	.022	.155	.076	.021	.149	.074	.021	.144	.072	.021															

pcc	80%			70%			50%			30%			10%			0
pw	50%	30%	10%	50%	30%	10%	50%	30%	10%	50%	30%	10%	50%	30%	10%	0
pfc	20%			20%			20%			20%			20%			0
RCR	RCR:Room Cavity Ratio						Ceiling Cavity Exitance Coefficients (CCEC)									
0.0	.221	.221	.221	.189	.189	.189	.129	.129	.129	.074	.074	.074	.024	.024	.024	
1.0	.212	.187	.164	.182	.161	.141	.124	.110	.098	.072	.064	.057	.023	.021	.018	
2.0	.205	.163	.128	.175	.140	.111	.120	.097	.077	.069	.057	.045	.022	.018	.015	
3.0	.197	.146	.105	.169	.126	.091	.116	.087	.064	.067	.051	.038	.022	.017	.012	
4.0	.189	.133	.089	.162	.115	.078	.112	.080	.055	.065	.047	.032	.021	.015	.011	
5.0	.182	.122	.079	.156	.106	.068	.108	.074	.048	.062	.043	.029	.020	.014	.009	
6.0	.175	.114	.071	.150	.099	.062	.104	.069	.044	.060	.041	.026	.019	.013	.009	
7.0	.168	.107	.065	.144	.093	.057	.100	.065	.040	.058	.038	.024	.019	.013	.008	
8.0	.161	.102	.061	.139	.088	.053	.096	.062	.037	.056	.036	.022	.018	.012	.007	
9.0	.155	.097	.057	.134	.084	.050	.093	.059	.035	.054	.035	.021	.017	.011	.007	
10.0	.149	.092	.054	.129	.080	.048	.089	.056	.034	.052	.033	.020	.017	.011	.007	

C Range: 0 - 360DEG
C Interval: 30.0DEG
Test Speed: HIGH
Temperature:25.3℃
Operators:
Test Date:2025-04-03

γ Range: 0 - 180DEG
γ Interval: 1.0DEG
Test System:EVERFINE GO-2000B_V1 SYSTEM V2.00.488
Humidity:65.0%
Test Distance:6.360m [K=1.0000]
Remarks:

UGR(Unified Glare Rating) Table

Test:U:48.00V I:0.0427A P:2.050W PF:1.000 Freq:0Hz Lamp Flux:121.97x1 lm										
NAME: SF34-48V-2835-96-CC-2700K					TYPE:			WEIGHT:		
SPEC.:					DIM.: Length=1m			SERIAL No.:		
MFR.: OLympia lighting					SUR.:			Shielding Angle:		
ceiling/cavity	0.7	0.7	0.5	0.5	0.3	0.7	0.7	0.5	0.5	0.3
walls	0.5	0.3	0.5	0.3	0.3	0.5	0.3	0.5	0.3	0.3
working plane	0.2	0.2	0.2	0.2	0.2	0.2	0.2	0.2	0.2	0.2
Room dimensions	Viewed crosswise					Viewed endwise				
x = 2H y = 2H	21.6	23.0	21.9	23.3	23.6	21.6	23.1	21.9	23.4	23.7
3H	23.2	24.6	23.6	24.9	25.2	23.3	24.7	23.6	25.0	25.3
4H	23.9	25.2	24.3	25.5	25.9	24.0	25.3	24.4	25.7	26.0
6H	24.5	25.7	24.9	26.1	26.4	24.6	25.9	25.0	26.2	26.6
8H	24.7	25.9	25.1	26.3	26.6	24.9	26.1	25.3	26.4	26.8
12H	24.9	26.0	25.3	26.4	26.8	25.1	26.2	25.5	26.6	27.0
4H 2H	22.2	23.5	22.6	23.8	24.2	22.2	23.5	22.6	23.9	24.2
3H	24.0	25.2	24.4	25.5	25.9	24.1	25.3	24.5	25.6	26.0
4H	24.9	25.9	25.3	26.3	26.8	25.0	26.0	25.4	26.4	26.9
6H	25.6	26.5	26.1	27.0	27.4	25.8	26.7	26.2	27.1	27.6
8H	25.9	26.8	26.4	27.2	27.7	26.1	26.9	26.5	27.4	27.8
12H	26.1	26.9	26.6	27.4	27.9	26.3	27.1	26.8	27.6	28.1
8H 4H	25.2	26.1	25.7	26.5	27.0	25.3	26.2	25.8	26.6	27.1
6H	26.1	26.8	26.6	27.3	27.8	26.3	27.0	26.8	27.5	28.0
8H	26.5	27.2	27.0	27.7	28.2	26.7	27.3	27.2	27.8	28.3
12H	26.8	27.4	27.4	27.9	28.5	27.0	27.6	27.6	28.1	28.7
12H 4H	25.2	26.0	25.7	26.5	27.0	25.3	26.1	25.8	26.6	27.1
6H	26.2	26.9	26.7	27.4	27.9	26.3	27.0	26.9	27.5	28.0
8H	26.7	27.2	27.2	27.7	28.3	26.8	27.4	27.4	27.9	28.4
Variations with the observer position at spacings(CIE Pub.117):										
S = 1.0H	+ 0.1 / - 0.2					+ 0.1 / - 0.2				
1.5H	+ 0.2 / - 0.3					+ 0.2 / - 0.3				
2.0H	+ 0.1 / - 0.3					+ 0.1 / - 0.3				

CIE Pub.117, 122.0 lm Total Lamp Luminous Flux Correct (8log(F/F0) = -7.3)
Area: 0.022 m2

C Range: 0 - 360DEG
C Interval: 30.0DEG
Test Speed: HIGH
Temperature:25.3℃
Operators:
Test Date:2025-04-03

γ Range: 0 - 180DEG
γ Interval: 1.0DEG
Test System:EVERFINE GO-2000B_V1 SYSTEM V2.00.488
Humidity:65.0%
Test Distance:6.360m [K=1.0000]
Remarks:

UTILIZATION FACTORS TABLE

Test:U:48.00V I:0.0427A P:2.050W PF:1.000 Freq:0Hz Lamp Flux:121.97x1 lm		
NAME: SF34-48V-2835-96-CC-2700K	TYPE:	WEIGHT:
SPEC.:	DIM.: Length=1m	SERIAL No.:
MFR.: OLympia lighting	SUR.:	Shielding Angle:

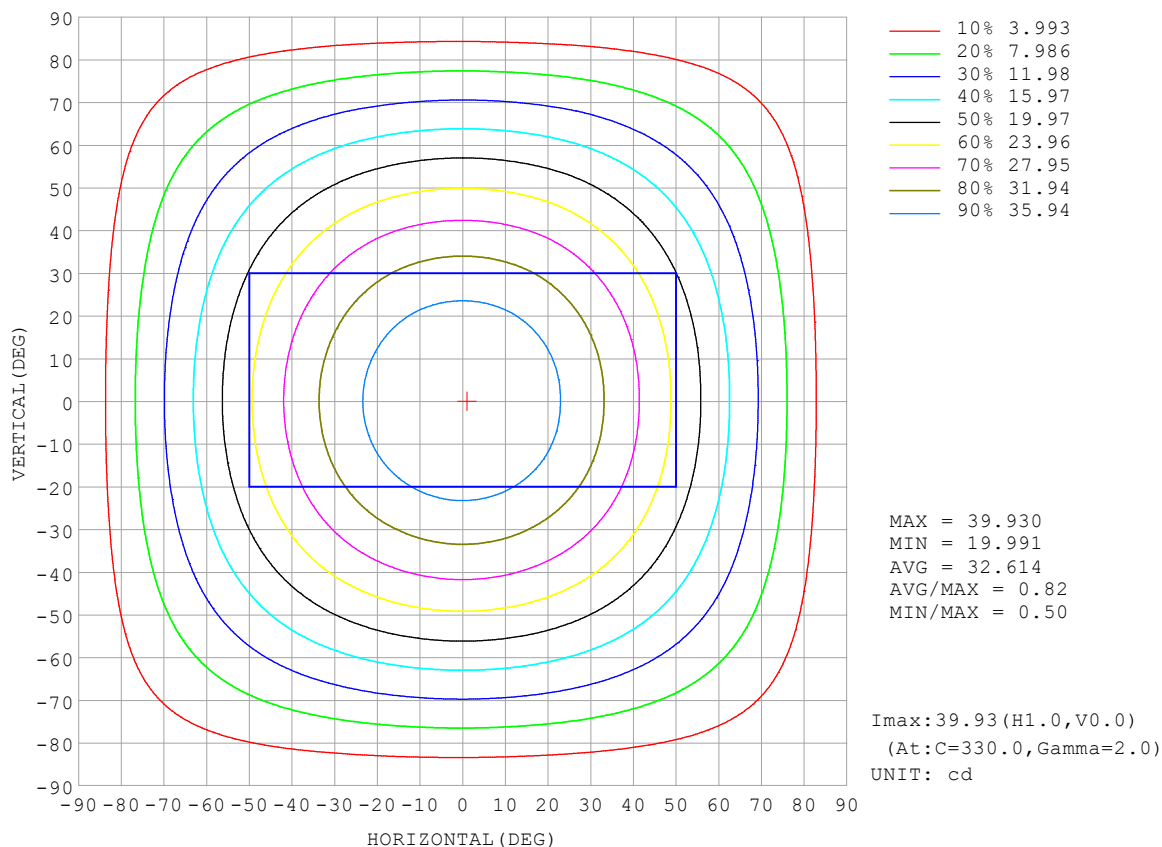
REFLECTANCE										
Ceiling	0.8	0.8	0.8	0.7	0.7	0.7	0.5	0.5	0.5	0
Walls	0.7	0.5	0.3	0.7	0.5	0.3	0.7	0.5	0.3	0
Working plane	0.2	0.2	0.2	0.2	0.2	0.2	0.2	0.2	0.2	0
ROOM INDEX	UTILIZATION FACTORS (PERCENT) $k(RI) \times RCR = 5$									
$k = 0.60$	56	44	37	55	44	37	53	43	36	30
0.80	65	54	46	64	53	46	62	52	45	38
1.00	74	62	55	72	62	54	70	63	54	46
1.25	81	70	62	79	69	62	76	67	61	53
1.50	86	75	68	84	74	67	80	72	66	58
2.00	93	84	77	91	82	76	86	80	74	65
2.50	97	89	82	94	87	81	90	84	79	69
3.00	100	93	87	98	91	86	93	88	83	73
4.00	104	98	93	102	96	92	97	92	88	78
5.00	107	102	97	104	99	95	99	95	92	81
ROOM INDEX	UF (total)									Direct
According to DIN EN 13032-2 2004			Suspended					SHRNOM = 1.25		

C Range: 0 - 360DEG
 C Interval: 30.0DEG
 Test Speed: HIGH
 Temperature: 25.3 °C
 Operators:
 Test Date: 2025-04-03

γ Range: 0 - 180DEG
 γ Interval: 1.0DEG
 Test System: EVERFINE GO-2000B_V1 SYSTEM V2.00.488
 Humidity: 65.0%
 Test Distance: 6.360m [K=1.0000]
 Remarks:

ISOCANDELA DIAGRAM

Test:U:48.00V I:0.0427A P:2.050W PF:1.000 Freq:0Hz Lamp Flux:121.97x1 lm		
NAME: SF34-48V-2835-96-CC-2700K	TYPE:	WEIGHT:
SPEC.:	DIM.: Length=1m	SERIAL No.:
MFR.: OLympia lighting	SUR.:	Shielding Angle:

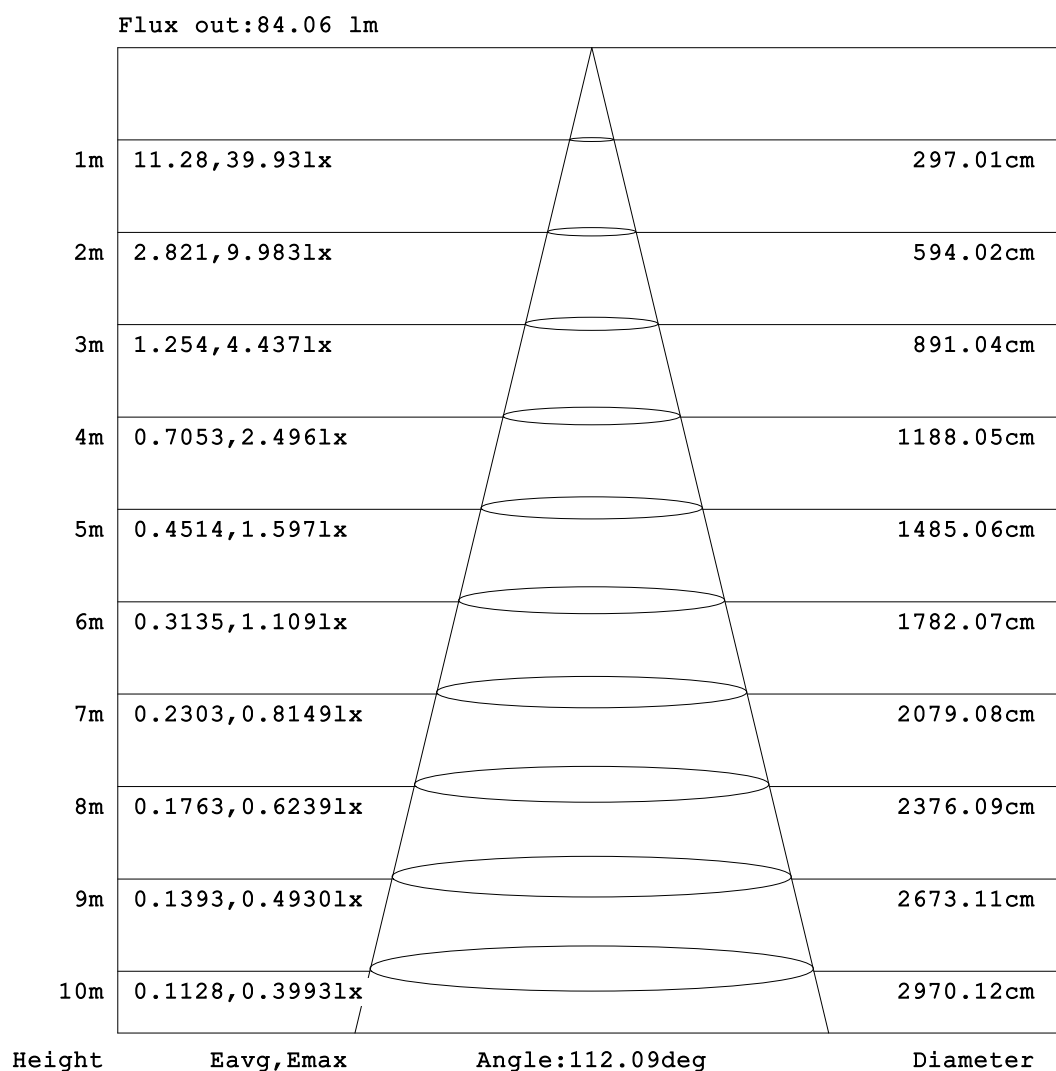


C Range: 0 - 360DEG
C Interval: 30.0DEG
Test Speed: HIGH
Temperature:25.3℃
Operators:
Test Date:2025-04-03

γ Range: 0 - 180DEG
γ Interval: 1.0DEG
Test System:EVERFINE GO-2000B_V1 SYSTEM V2.00.488
Humidity:65.0%
Test Distance:6.360m [K=1.0000]
Remarks:

AAI Figure

Test:U:48.00V I:0.0427A P:2.050W PF:1.000 Freq:0Hz Lamp Flux:121.97x1 lm		
NAME: SF34-48V-2835-96-CC-2700K	TYPE:	WEIGHT:
SPEC.:	DIM.: Length=1m	SERIAL No.:
MFR.: OLympia lighting	SUR.:	Shielding Angle:



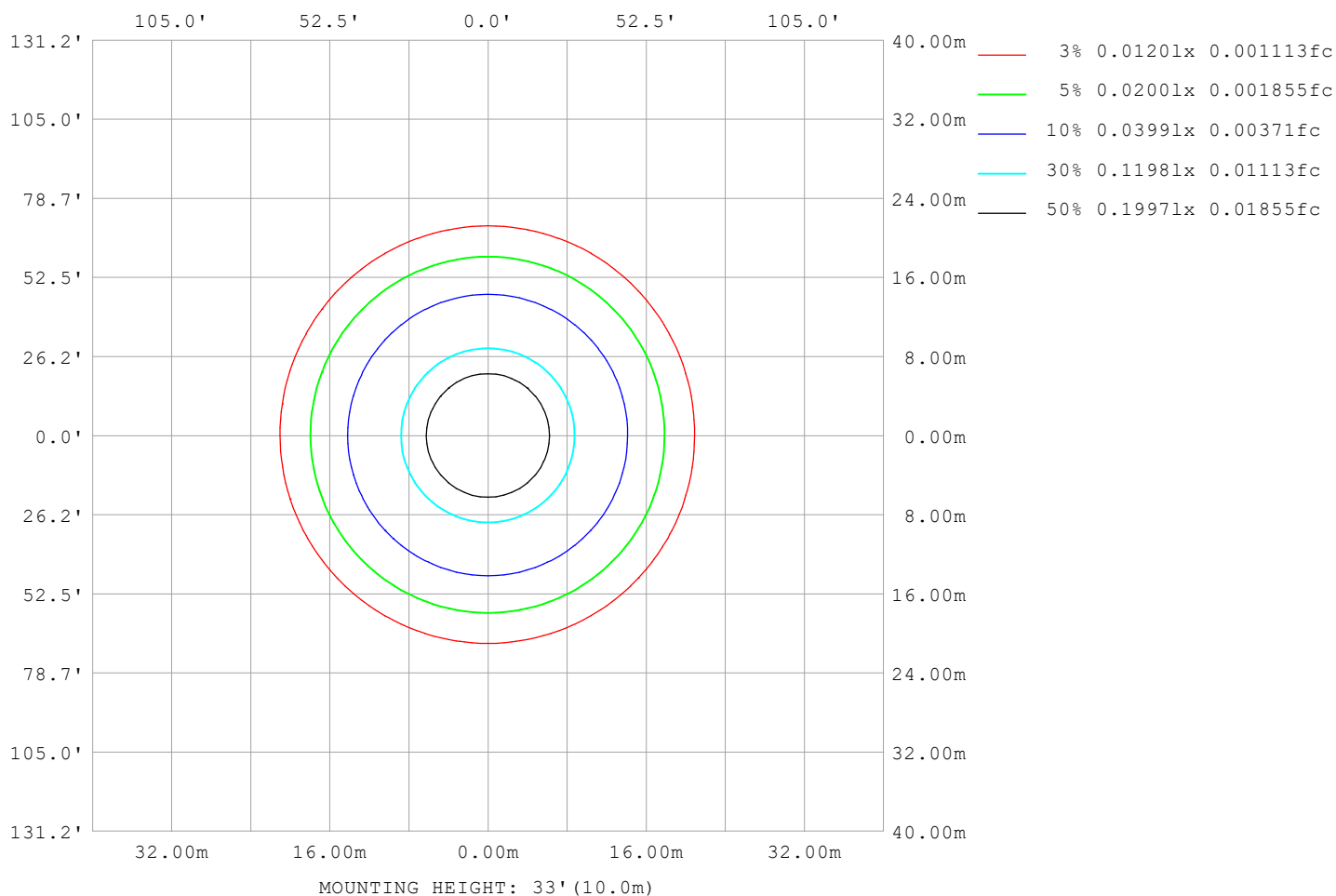
Note:The Curves indicate the illuminated area and the average illumination when the luminaire is at different distance.

C Range: 0 - 360DEG
C Interval: 30.0DEG
Test Speed: HIGH
Temperature:25.3℃
Operators:
Test Date:2025-04-03

γ Range: 0 - 180DEG
γ Interval: 1.0DEG
Test System:EVERFINE GO-2000B_V1 SYSTEM V2.00.488
Humidity:65.0%
Test Distance:6.360m [K=1.0000]
Remarks:

ISOLUX DIAGRAM

Test:U:48.00V I:0.0427A P:2.050W PF:1.000 Freq:0Hz Lamp Flux:121.97x1 lm		
NAME: SF34-48V-2835-96-CC-2700K	TYPE:	WEIGHT:
SPEC.:	DIM.: Length=1m	SERIAL No.:
MFR.: OLympia lighting	SUR.:	Shielding Angle:



C Range: 0 - 360DEG
C Interval: 30.0DEG
Test Speed: HIGH
Temperature: 25.3°C
Operators:
Test Date: 2025-04-03

γ Range: 0 - 180DEG
γ Interval: 1.0DEG
Test System: EVERFINE GO-2000B_V1 SYSTEM V2.00.488
Humidity: 65.0%
Test Distance: 6.360m [K=1.0000]
Remarks:

LED Avg.L Report

Test:U:48.00V I:0.0427A P:2.050W PF:1.000 Freq:0Hz Lamp Flux:121.97x1 lm		
NAME: SF34-48V-2835-96-CC-2700K	TYPE:	WEIGHT:
SPEC.:	DIM.: Length=1m	SERIAL No.:
MFR.: OLympia lighting	SUR.:	Shielding Angle:

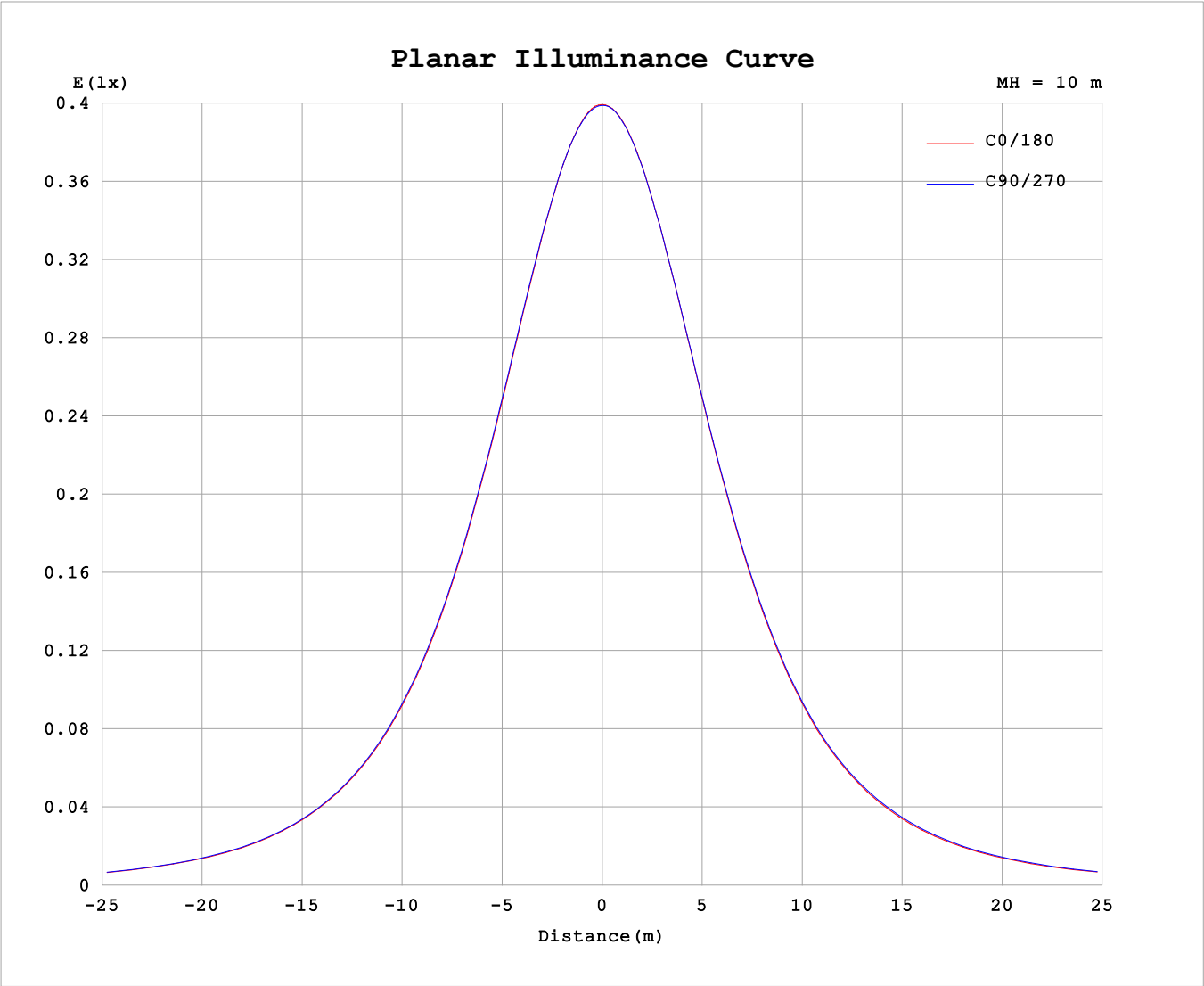
AvgL	cd/m2
L_0~180 (65) av	1579
L_0~180 (75) av	1541
L_0~180 (85) av	1564
L_90~270 (65) av	1620
L_90~270 (75) av	1605
L_90~270 (85) av	1742
L_45 (65) av	1602
L_45 (75) av	1578
L_45 (85) av	1661

Standard: GB/T 29293-2012

C Range: 0 - 360DEG
C Interval: 30.0DEG
Test Speed: HIGH
Temperature:25.3℃
Operators:
Test Date:2025-04-03

γ Range: 0 - 180DEG
γ Interval: 1.0DEG
Test System:EVERFINE GO-2000B_V1 SYSTEM V2.00.488
Humidity:65.0%
Test Distance:6.360m [K=1.0000]
Remarks:

Planar Illuminance Curve



C Range: 0 - 360DEG
C Interval: 30.0DEG
Test Speed: HIGH
Temperature:25.3℃
Operators:
Test Date:2025-04-03

γ Range: 0 - 180DEG
γ Interval: 1.0DEG
Test System:EVERFINE GO-2000B_V1 SYSTEM V2.00.488
Humidity:65.0%
Test Distance:6.360m [K=1.0000]
Remarks:

LUMINOUS DISTRIBUTION INTENSITY DATA

Test:U:48.00V I:0.0427A P:2.050W PF:1.000 Freq:0Hz Lamp Flux:121.97x1 lm											
NAME: SF34-48V-2835-96-CC-2700K						TYPE:			WEIGHT:		
SPEC.:						DIM.: Length=1m			SERIAL No.:		
MFR.: OLympia lighting						SUR.:			Shielding Angle:		

Table--1

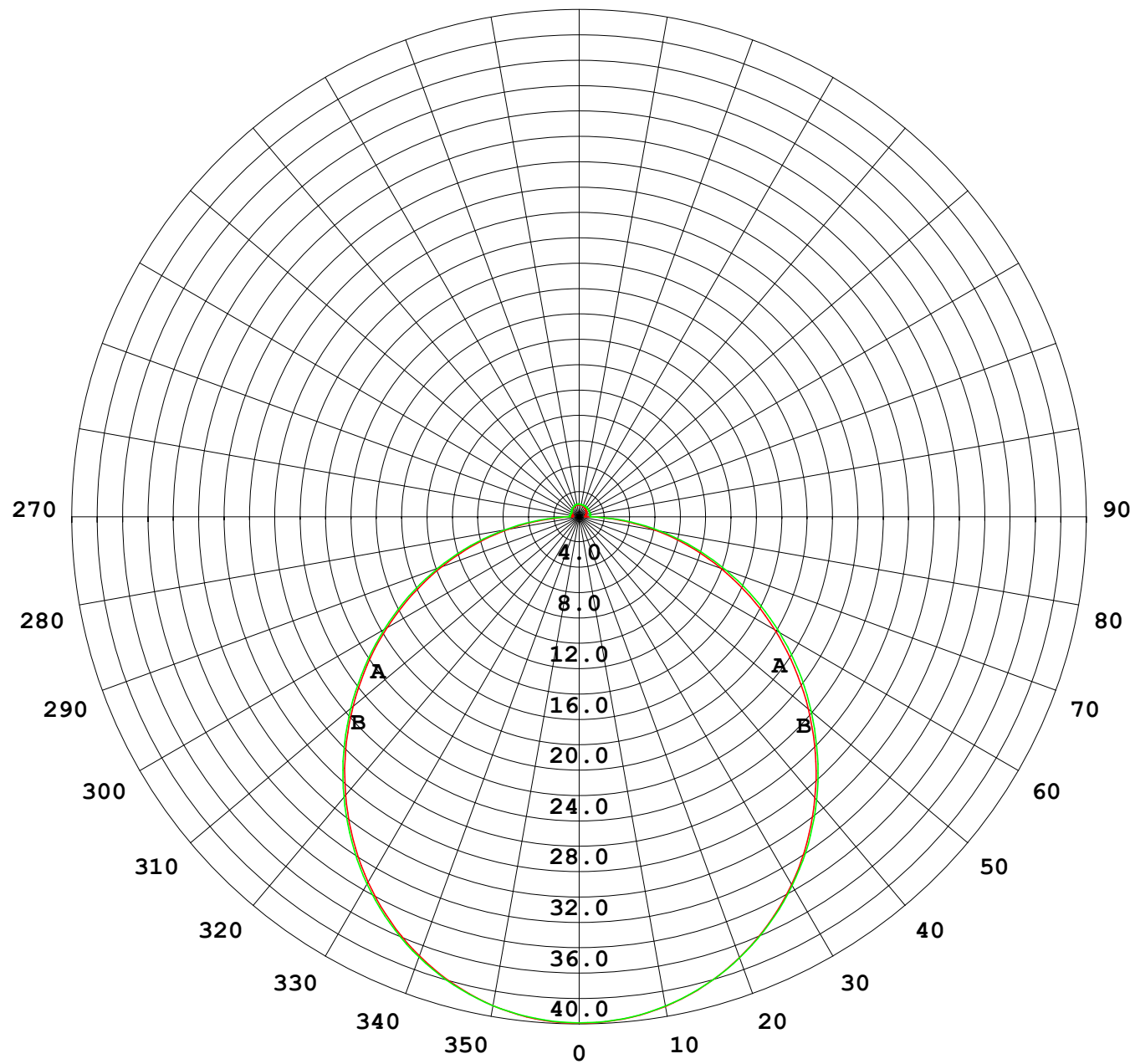
UNIT: cd

C (DEG) γ (DEG)	0	30	60	90	120	150	180	210	240	270	300	330							
0	39.9	39.9	39.9	39.9	39.9	39.9	39.9	39.9	39.9	39.9	39.9	39.9							
5	39.7	39.7	39.7	39.7	39.7	39.7	39.7	39.7	39.7	39.7	39.7	39.7							
10	39.1	39.2	39.2	39.2	39.2	39.2	39.2	39.2	39.2	39.2	39.2	39.2							
15	38.1	38.2	38.2	38.2	38.2	38.2	38.2	38.2	38.2	38.3	38.3	38.3	38.2						
20	36.8	36.9	36.9	37.0	36.9	37.0	37.0	37.0	37.0	37.0	37.0	37.0	36.9						
25	35.2	35.3	35.3	35.4	35.3	35.3	35.4	35.4	35.5	35.5	35.5	35.3							
30	33.3	33.4	33.4	33.5	33.4	33.5	33.5	33.5	33.6	33.6	33.6	33.4							
35	31.1	31.2	31.2	31.3	31.2	31.3	31.3	31.4	31.5	31.5	31.5	31.3							
40	28.6	28.8	28.8	28.9	28.8	28.9	28.9	29.0	29.2	29.1	29.1	28.9							
45	26.0	26.2	26.2	26.3	26.2	26.3	26.3	26.4	26.6	26.6	26.6	26.3							
50	23.3	23.4	23.5	23.5	23.5	23.5	23.6	23.7	23.9	23.9	23.9	23.6							
55	20.4	20.5	20.6	20.7	20.6	20.6	20.7	20.8	21.1	21.1	21.1	20.7							
60	17.5	17.6	17.7	17.7	17.7	17.7	17.8	18.0	18.1	18.2	18.2	17.8							
65	14.5	14.6	14.7	14.8	14.8	14.8	14.9	15.0	15.2	15.3	15.2	14.9							
70	11.5	11.6	11.8	11.8	11.8	11.8	11.9	12.1	12.2	12.3	12.2	11.9							
75	8.57	8.68	8.82	8.89	8.86	8.88	8.98	9.12	9.30	9.38	9.27	8.92							
80	5.63	5.75	5.88	5.98	5.95	6.00	6.10	6.21	6.41	6.47	6.34	6.00							
85	2.74	2.87	2.97	3.10	3.08	3.15	3.25	3.34	3.54	3.58	3.42	3.08							
90	0.59	0.65	0.72	0.77	0.76	0.83	0.85	0.92	0.96	0.93	0.87	0.72							
95	0.52	0.63	0.70	0.77	0.70	0.61	0.47	0.58	0.78	0.87	0.79	0.60							
100	0.55	0.65	0.70	0.76	0.71	0.64	0.49	0.60	0.81	0.88	0.81	0.61							
105	0.58	0.68	0.71	0.74	0.72	0.68	0.54	0.63	0.83	0.90	0.83	0.64							
110	0.62	0.71	0.72	0.72	0.74	0.71	0.57	0.66	0.85	0.91	0.85	0.67							
115	0.66	0.74	0.74	0.72	0.76	0.73	0.61	0.70	0.87	0.92	0.87	0.70							
120	0.70	0.76	0.75	0.73	0.77	0.76	0.65	0.72	0.88	0.92	0.88	0.73							
125	0.74	0.80	0.77	0.76	0.79	0.80	0.68	0.74	0.90	0.92	0.90	0.75							
130	0.77	0.80	0.79	0.79	0.81	0.83	0.71	0.77	0.91	0.93	0.91	0.77							
135	0.80	0.81	0.80	0.83	0.84	0.86	0.75	0.80	0.92	0.94	0.92	0.79							
140	0.83	0.83	0.81	0.85	0.87	0.89	0.79	0.82	0.94	0.94	0.93	0.82							
145	0.85	0.84	0.81	0.86	0.89	0.91	0.82	0.85	0.95	0.95	0.94	0.84							
150	0.88	0.86	0.83	0.92	0.92	0.93	0.86	0.87	0.95	0.96	0.94	0.86							
155	0.91	0.89	0.90	0.95	0.95	0.96	0.90	0.90	0.97	0.97	0.96	0.89							
160	0.93	0.91	0.92	0.98	0.97	0.98	0.93	0.92	0.98	0.97	0.97	0.90							
165	0.95	0.94	0.97	1.01	0.99	1.00	0.95	0.94	0.99	0.98	0.98	0.93							
170	0.95	1.00	0.99	1.02	1.00	1.02	0.95	0.97	1.00	0.99	0.99	0.96							
175	0.95	1.00	1.00	1.02	1.01	1.02	0.96	0.98	1.01	1.00	1.01	0.98							
180	0.96	1.00	1.01	1.02	1.02	1.02	0.96	1.00	1.01	1.02	1.02	1.00							

C Range: 0 - 360DEG
C Interval: 30.0DEG
Test Speed: HIGH
Temperature:25.3℃
Operators:
Test Date:2025-04-03

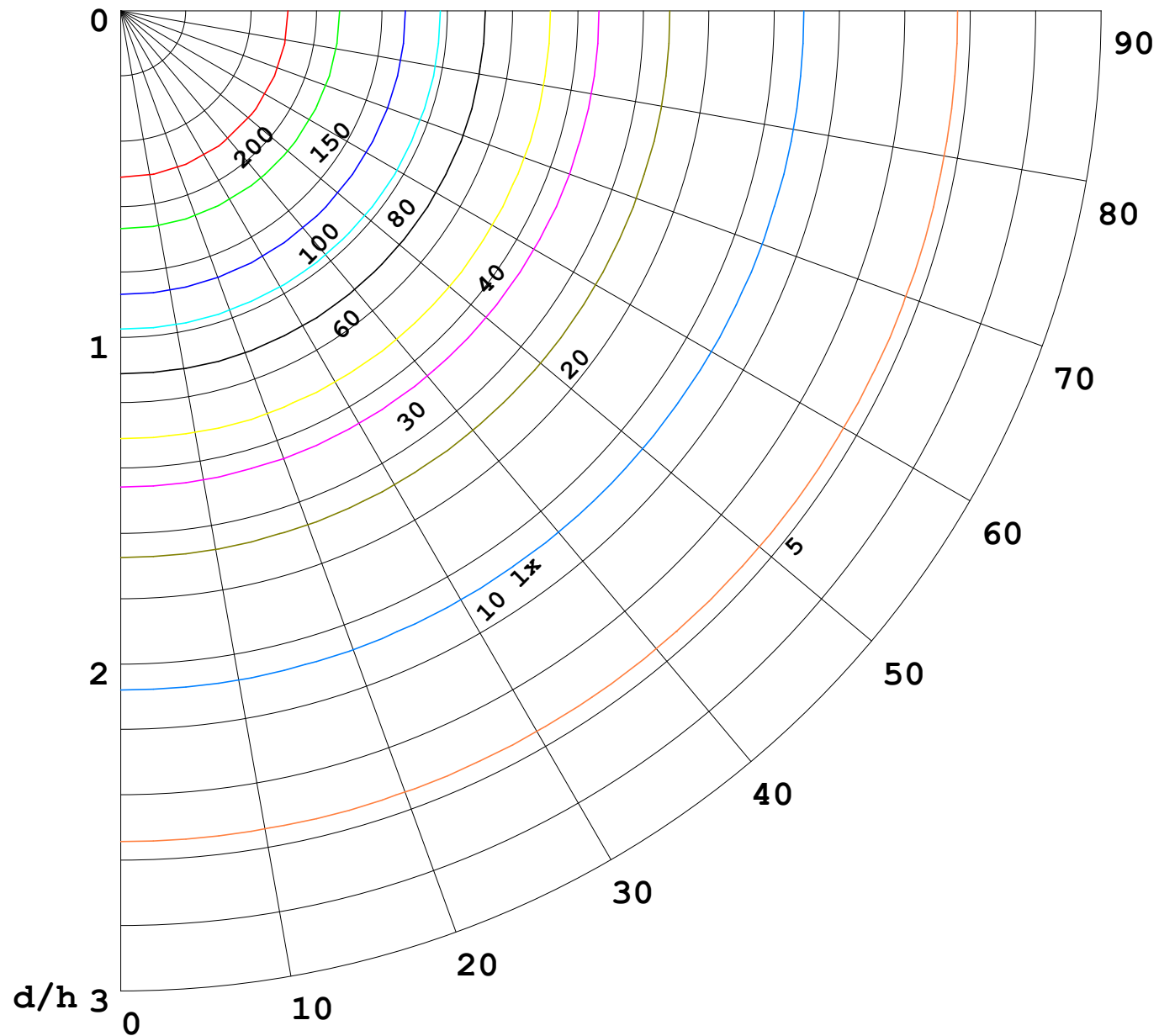
γ Range: 0 - 180DEG
γ Interval: 1.0DEG
Test System:EVERFINE GO-2000B_V1 SYSTEM V2.00.488
Humidity:65.0%
Test Distance:6.360m [K=1.0000]
Remarks:

I (cd)



1000 lm

$\kappa = 1$



F = 1000 lm
 K = 0.7
 Hcc = 0.8 m
 Hfc = 0.0 m
 Eave = 100 lx

	Pcc	Pw	Pfc
————	70	50	30
————	50	30	20

