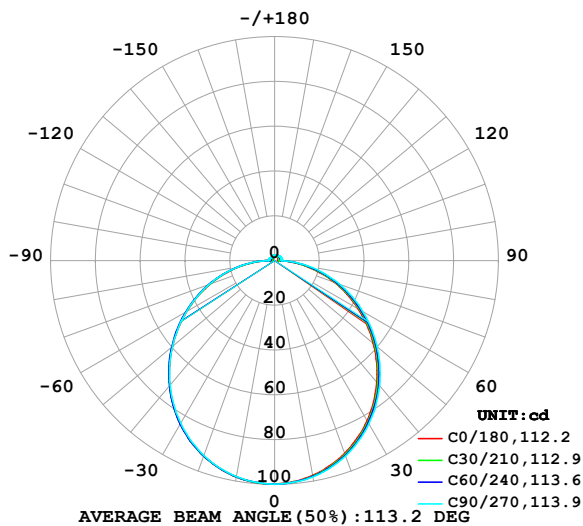


LUMINAIRE PHOTOMETRIC TEST REPORT

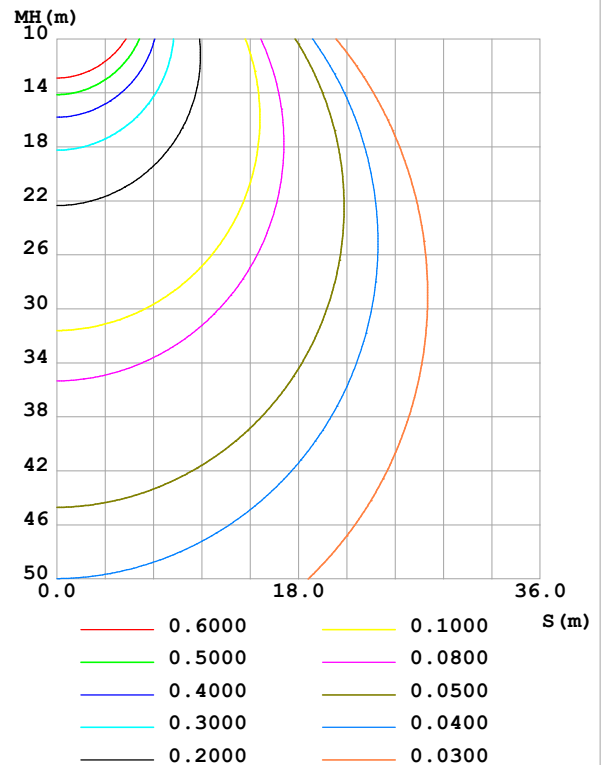
Test:U:48.00V I:0.0996A P:4.781W PF:1.000 Freq:0Hz Lamp Flux:309.68x1 lm		
NAME: SF33-48V-2835-96-CC-4000K-80	TYPE:	WEIGHT:
SPEC.:	DIM.: Length=1m	SERIAL No.:
MFR.: OLympia lighting	SUR.:	Shielding Angle:

DATA OF LAMP		PHOTOMETRIC DATA				Eff: 64.78 lm/W
MODEL	2835	I _{max} (cd)	99.76	S/MH(C0/180)	1.26	
NOMINAL POWER(W)	5	LOR(%)	100.0	S/MH(C90/270)	1.25	
RATED VOLTAGE(V)	48	TOTAL FLUX(lm)	309.68	η UP,DN(C0-180)	2.6,47.5	
NOMINAL FLUX(lm)	309.68	CIE CLASS	DIRECT	η UP,DN(C180-360)	2.1,47.8	
LAMPS INSIDE	1	η up (%)	4.6	CIBSE SHR NOM	1.25	
TEST VOLTAGE(V)		η down (%)	95.4	CIBSE SHR MAX	1.35	

LUMINOUS INTENSITY DISTRIBUTION DIAGRAM



C0 PLANE ISOLUX DIAGRAM (UNIT:lx)



C Range: 0 - 360DEG
C Interval: 30.0DEG
Test Speed: HIGH
Temperature:25.3℃
Operators:
Test Date:2025-04-16

γ Range: 0 - 180DEG
γ Interval: 1.0DEG
Test System:EVERFINE GO-2000B_V1 SYSTEM V2.00.488
Humidity:65.0%
Test Distance:6.360m [K=1.0000]
Remarks:

ZONAL FLUX DIAGRAM

ZONAL FLUX DIAGRAM:

γ	C0	C45	C90	C135	C180	C225	C270	C315	γ	Φ zone	Φ total	%lum, lamp
10	97.45	97.82	98.10	98.18	98.19	98.11	97.96	97.76	0- 10	9.437	9.437	3.05,3.05
20	91.60	92.25	92.79	92.98	92.84	92.83	92.59	92.15	10- 20	26.99	36.43	11.8,11.8
30	82.62	83.45	84.20	84.49	84.24	84.28	83.92	83.35	20- 30	40.81	77.24	24.9,24.9
40	71.04	72.02	72.90	73.32	72.89	73.05	72.67	71.96	30- 40	49.09	126.3	40.8,40.8
50	57.62	58.70	59.74	60.23	59.64	59.90	59.57	58.71	40- 50	50.99	177.3	57.3,57.3
60	43.16	44.29	45.47	45.98	45.31	45.66	45.47	44.40	50- 60	46.71	224.0	72.3,72.3
70	28.36	29.47	30.80	31.22	30.65	31.07	31.03	29.68	60- 70	37.29	261.3	84.4,84.4
80	13.82	14.77	16.18	16.52	16.14	16.56	16.63	15.07	70- 80	24.26	285.6	92.2,92.2
90	2.924	3.186	3.104	3.691	3.472	3.373	2.898	3.141	80- 90	9.725	295.3	95.4,95.4
100	1.472	2.401	3.126	2.610	1.320	1.873	2.715	1.934	90-100	2.561	297.9	96.2,96.2
110	1.668	2.489	3.113	2.635	1.472	1.897	2.680	1.968	100-110	2.345	300.2	96.9,96.9
120	1.867	2.539	3.029	2.644	1.651	1.916	2.524	1.919	110-120	2.237	302.4	97.7,97.7
130	2.048	2.551	2.922	2.610	1.824	1.955	2.250	1.908	120-130	2.026	304.5	98.3,98.3
140	2.198	2.540	2.801	2.566	2.006	2.027	2.053	1.857	130-140	1.743	306.2	98.9,98.9
150	2.334	2.522	2.700	2.549	2.178	2.170	2.083	2.003	140-150	1.431	307.6	99.3,99.3
160	2.449	2.531	2.631	2.549	2.351	2.329	2.247	2.202	150-160	1.092	308.7	99.7,99.7
170	2.538	2.561	2.588	2.562	2.504	2.505	2.486	2.468	160-170	0.6966	309.4	99.9,99.9
180	2.576	2.591	2.613	2.588	2.576	2.590	2.611	2.588	170-180	0.2438	309.7	100,100
DEG	LUMINOUS INTENSITY:cd									UNIT:lm		

Conical surface Flux(90deg): 151.98 lm

%lum = 49.1%

%lamp = 49.1%

Conical surface Flux(130deg): 244.12 lm

%lum = 78.8%

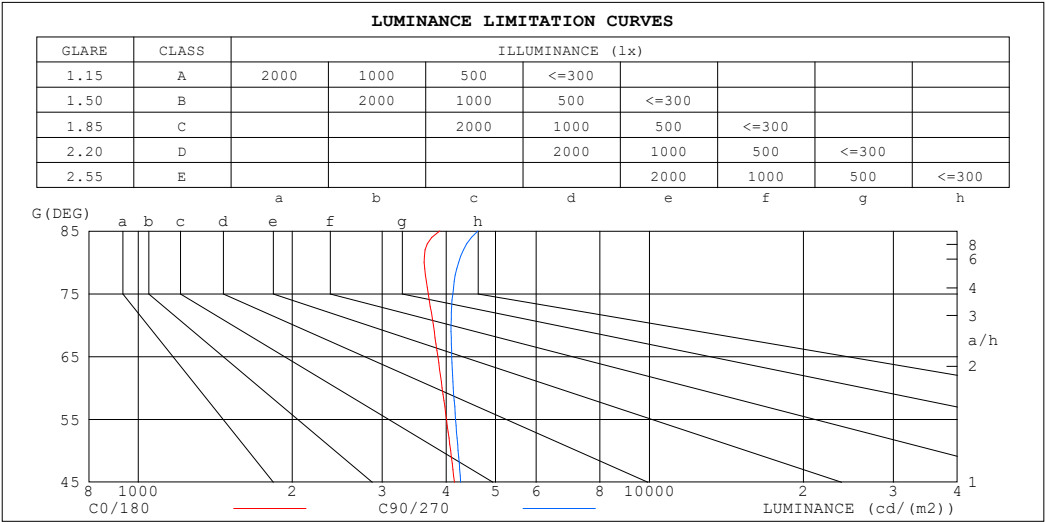
%lamp = 78.8%

C Range: 0 - 360DEG
 C Interval: 30.0DEG
 Test Speed: HIGH
 Temperature:25.3℃
 Operators:
 Test Date:2025-04-16

γ Range: 0 - 180DEG
 γ Interval: 1.0DEG
 Test System:EVERFINE GO-2000B_V1 SYSTEM V2.00.488
 Humidity:65.0%
 Test Distance:6.360m [K=1.0000]
 Remarks:

LUMINANCE LIMITATION CURVES

Test:U:48.00V I:0.0996A P:4.781W PF:1.000 Freq:0Hz Lamp Flux:309.68x1 lm		
NAME: SF33-48V-2835-96-CC-4000K-80	TYPE:	WEIGHT:
SPEC.:	DIM.: Length=1m	SERIAL No.:
MFR.: OLympia lighting	SUR.:	Shielding Angle:



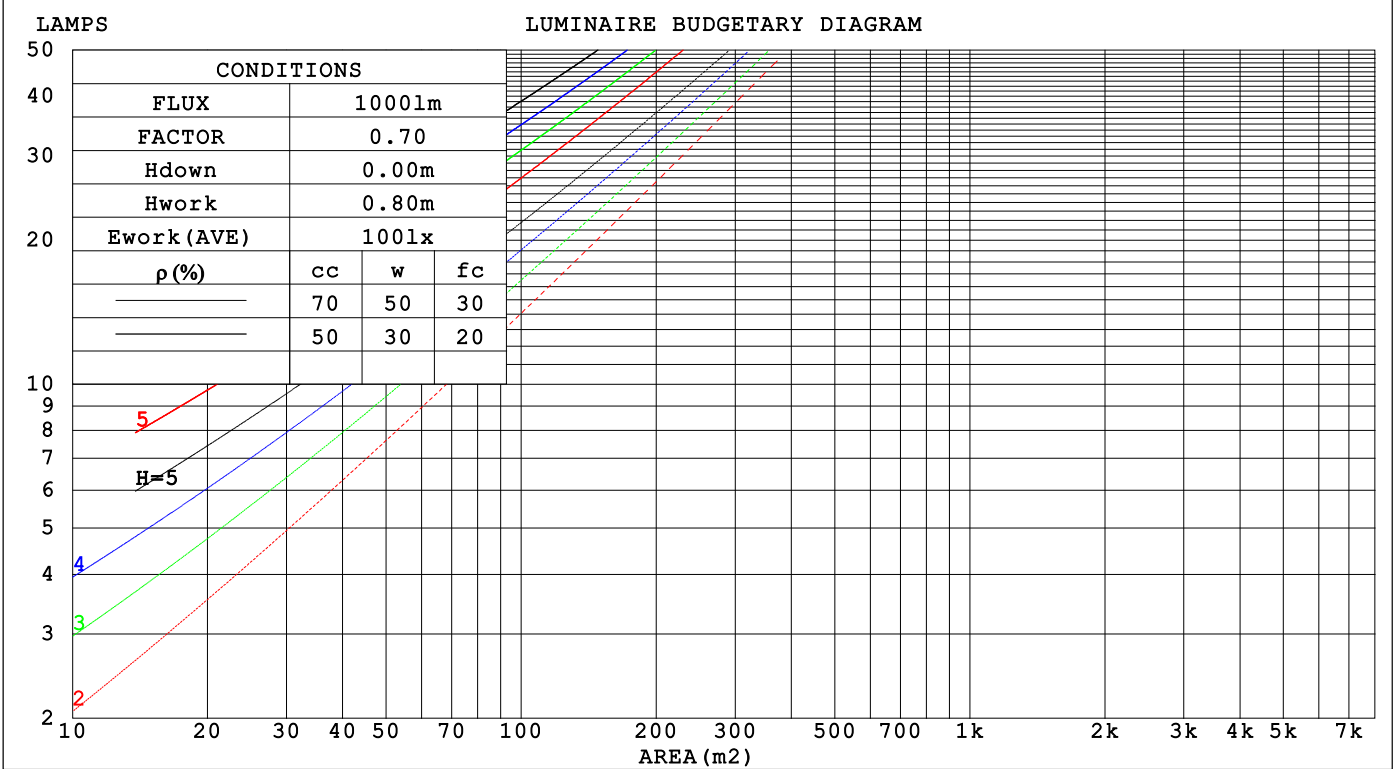
LUMINANCE cd/(m2)		
G (DEG)	C0/180	C90/270
85	3891	4618
80	3625	4232
75	3693	4122
70	3775	4091
65	3854	4102
60	3930	4132
55	4006	4173
50	4081	4222
45	4153	4273

C Range: 0 - 360DEG	γ Range: 0 - 180DEG
C Interval: 30.0DEG	γ Interval: 1.0DEG
Test Speed: HIGH	Test System:EVERFINE GO-2000B_V1 SYSTEM V2.00.488
Temperature:25.3℃	Humidity:65.0%
Operators:	Test Distance:6.360m [K=1.0000]
Test Date:2025-04-16	Remarks:

CU AND LUMINAIRE BUDGETARY ESTIMATE DIAGRAM

Test:U:48.00V I:0.0996A P:4.781W PF:1.000 Freq:0Hz		
Lamp Flux:309.68x1 lm		
NAME: SF33-48V-2835-96-CC-4000K-80	TYPE:	WEIGHT:
SPEC.:	DIM.: Length=1m	SERIAL No.:
MFR.: OLYMPIA lighting	SUR.:	Shielding Angle:

pcc	80%			70%			50%			30%			10%			0
p _w	50%	30%	10%	50%	30%	10%	50%	30%	10%	50%	30%	10%	50%	30%	10%	0
p _{fc}	20%			20%			20%			20%			20%			0
RCR	RCR:Room Cavity Ratio															



C Range: 0 - 360DEG
C Interval: 30.0DEG
Test Speed: HIGH
Temperature:25.3℃
Operators:
Test Date:2025-04-16

γ Range: 0 - 180DEG
γ Interval: 1.0DEG
Test System:EVERFINE GO-2000B_V1 SYSTEM V2.00.488
Humidity:65.0%
Test Distance:6.360m [K=1.0000]
Remarks:

WEC AND CCEC

Test:U:48.00V I:0.0996A P:4.781W PF:1.000 Freq:0Hz Lamp Flux:309.68x1 lm		
NAME: SF33-48V-2835-96-CC-4000K-80	TYPE:	WEIGHT:
SPEC.:	DIM.: Length=1m	SERIAL No.:
MFR.: OLympia lighting	SUR.:	Shielding Angle:

pcc	80%			70%			50%			30%			10%			0														
pw	50%	30%	10%	50%	30%	10%	50%	30%	10%	50%	30%	10%	50%	30%	10%	0														
pfc	20%			20%			20%			20%			20%			0														
RCR	RCR:Room Cavity Ratio															Wall Exitance Coefficients(WEC)														
0.0																														
1.0	.328	.186	.059	.319	.182	.058	.303	.174	.056	.289	.166	.053	.275	.159	.051															
2.0	.302	.165	.051	.294	.162	.050	.280	.156	.048	.267	.150	.047	.255	.144	.045															
3.0	.276	.147	.044	.269	.144	.043	.257	.139	.042	.245	.134	.041	.234	.130	.040															
4.0	.253	.132	.039	.247	.129	.038	.236	.125	.037	.225	.121	.036	.215	.117	.036															
5.0	.233	.119	.034	.228	.117	.034	.217	.113	.033	.208	.110	.033	.199	.106	.032															
6.0	.215	.108	.031	.211	.106	.031	.201	.103	.030	.193	.100	.029	.185	.097	.029															
7.0	.200	.099	.028	.196	.097	.028	.187	.095	.027	.180	.092	.027	.172	.090	.026															
8.0	.186	.091	.026	.183	.090	.025	.175	.087	.025	.168	.085	.025	.161	.083	.024															
9.0	.175	.084	.024	.171	.083	.023	.164	.081	.023	.158	.079	.023	.152	.077	.022															
10.0	.164	.079	.022	.161	.078	.022	.154	.076	.021	.149	.074	.021	.143	.072	.021															

pcc	80%			70%			50%			30%			10%			0
pw	50%	30%	10%	50%	30%	10%	50%	30%	10%	50%	30%	10%	50%	30%	10%	0
pfc	20%			20%			20%			20%			20%			0
RCR	RCR:Room Cavity Ratio						Ceiling Cavity Exitance Coefficients (CCEC)									
0.0	.226	.226	.226	.193	.193	.193	.132	.132	.132	.076	.076	.076	.024	.024	.024	
1.0	.217	.192	.169	.186	.164	.145	.127	.113	.100	.073	.065	.058	.023	.021	.019	
2.0	.209	.168	.133	.179	.144	.115	.123	.100	.080	.071	.058	.047	.023	.019	.015	
3.0	.202	.150	.110	.173	.130	.095	.119	.090	.067	.069	.053	.039	.022	.017	.013	
4.0	.194	.137	.094	.167	.119	.082	.115	.083	.057	.066	.048	.034	.021	.016	.011	
5.0	.187	.127	.083	.160	.110	.072	.110	.077	.051	.064	.045	.030	.021	.015	.010	
6.0	.179	.119	.075	.154	.103	.066	.106	.072	.046	.062	.042	.028	.020	.014	.009	
7.0	.172	.112	.070	.148	.097	.061	.102	.068	.043	.060	.040	.026	.019	.013	.008	
8.0	.166	.106	.065	.143	.092	.057	.099	.065	.040	.057	.038	.024	.019	.013	.008	
9.0	.160	.101	.062	.138	.088	.054	.095	.062	.038	.056	.037	.023	.018	.012	.008	
10.0	.154	.097	.059	.133	.084	.052	.092	.059	.037	.054	.035	.022	.017	.012	.007	

C Range: 0 - 360DEG
C Interval: 30.0DEG
Test Speed: HIGH
Temperature:25.3℃
Operators:
Test Date:2025-04-16

γ Range: 0 - 180DEG
γ Interval: 1.0DEG
Test System:EVERFINE GO-2000B_V1 SYSTEM V2.00.488
Humidity:65.0%
Test Distance:6.360m [K=1.0000]
Remarks:

UGR(Unified Glare Rating) Table

Test:U:48.00V I:0.0996A P:4.781W PF:1.000 Freq:0Hz Lamp Flux:309.68x1 lm										
NAME: SF33-48V-2835-96-CC-4000K-80					TYPE:			WEIGHT:		
SPEC.:					DIM.: Length=1m			SERIAL No.:		
MFR.: OLympia lighting					SUR.:			Shielding Angle:		
ceiling/cavity	0.7	0.7	0.5	0.5	0.3	0.7	0.7	0.5	0.5	0.3
walls	0.5	0.3	0.5	0.3	0.3	0.5	0.3	0.5	0.3	0.3
working plane	0.2	0.2	0.2	0.2	0.2	0.2	0.2	0.2	0.2	0.2
Room dimensions	Viewed crosswise					Viewed endwise				
x = 2H y = 2H	21.4	22.9	21.7	23.2	23.5	21.6	23.1	21.9	23.4	23.7
3H	23.0	24.4	23.4	24.7	25.1	23.3	24.7	23.7	25.0	25.3
4H	23.7	25.0	24.1	25.4	25.7	24.1	25.4	24.5	25.7	26.1
6H	24.3	25.5	24.7	25.9	26.3	24.7	26.0	25.1	26.3	26.7
8H	24.5	25.7	24.9	26.1	26.5	25.0	26.2	25.4	26.6	27.0
12H	24.7	25.8	25.1	26.2	26.6	25.2	26.4	25.7	26.8	27.2
4H 2H	22.1	23.4	22.4	23.7	24.1	22.2	23.5	22.6	23.8	24.2
3H	23.9	25.0	24.3	25.4	25.8	24.1	25.2	24.5	25.6	26.0
4H	24.7	25.8	25.2	26.2	26.6	25.0	26.1	25.5	26.5	26.9
6H	25.4	26.4	25.9	26.8	27.3	25.8	26.8	26.3	27.2	27.7
8H	25.7	26.6	26.2	27.0	27.5	26.2	27.0	26.7	27.5	28.0
12H	26.0	26.8	26.5	27.2	27.7	26.5	27.3	27.0	27.7	28.2
8H 4H	25.1	25.9	25.6	26.4	26.9	25.3	26.2	25.8	26.6	27.1
6H	26.0	26.7	26.5	27.2	27.7	26.3	27.0	26.8	27.5	28.1
8H	26.4	27.0	26.9	27.5	28.1	26.8	27.4	27.3	27.9	28.5
12H	26.7	27.3	27.3	27.8	28.4	27.2	27.7	27.7	28.3	28.8
12H 4H	25.1	25.9	25.6	26.4	26.9	25.3	26.1	25.8	26.6	27.1
6H	26.1	26.7	26.6	27.2	27.8	26.4	27.0	26.9	27.5	28.1
8H	26.5	27.1	27.1	27.6	28.2	26.9	27.5	27.5	28.0	28.6
Variations with the observer position at spacings(CIE Pub.117):										
S = 1.0H	+ 0.1 / - 0.2					+ 0.1 / - 0.2				
1.5H	+ 0.2 / - 0.3					+ 0.2 / - 0.3				
2.0H	+ 0.1 / - 0.3					+ 0.1 / - 0.3				

CIE Pub.117, 309.7 lm Total Lamp Luminous Flux Correct (8log(F/F0) = -4.1)
Area: 0.022 m2

C Range: 0 - 360DEG
C Interval: 30.0DEG
Test Speed: HIGH
Temperature:25.3℃
Operators:
Test Date:2025-04-16

γ Range: 0 - 180DEG
γ Interval: 1.0DEG
Test System:EVERFINE GO-2000B_V1 SYSTEM V2.00.488
Humidity:65.0%
Test Distance:6.360m [K=1.0000]
Remarks:

UTILIZATION FACTORS TABLE

Test:U:48.00V I:0.0996A P:4.781W PF:1.000 Freq:0Hz Lamp Flux:309.68x1 lm		
NAME: SF33-48V-2835-96-CC-4000K-80	TYPE:	WEIGHT:
SPEC.:	DIM.: Length=1m	SERIAL No.:
MFR.: OLympia lighting	SUR.:	Shielding Angle:

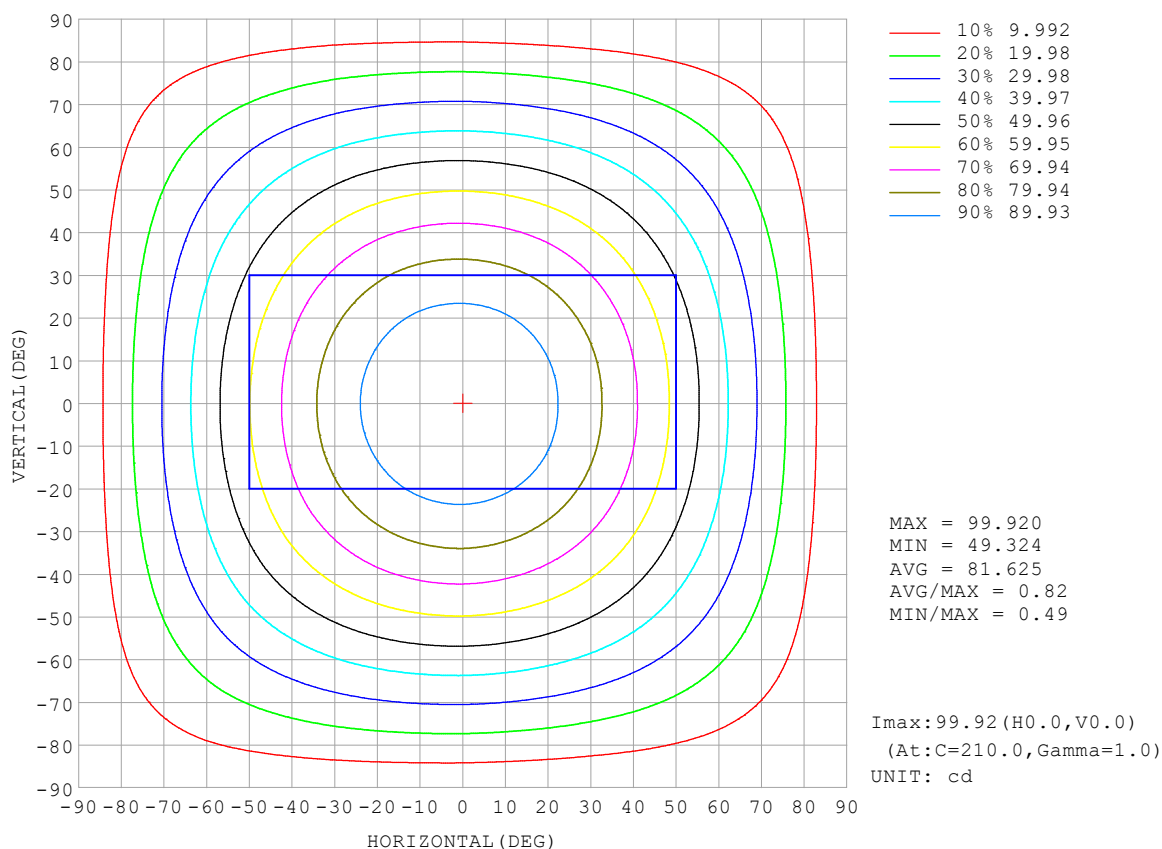
REFLECTANCE										
Ceiling	0.8	0.8	0.8	0.7	0.7	0.7	0.5	0.5	0.5	0
Walls	0.7	0.5	0.3	0.7	0.5	0.3	0.7	0.5	0.3	0
Working plane	0.2	0.2	0.2	0.2	0.2	0.2	0.2	0.2	0.2	0
ROOM INDEX	UTILIZATION FACTORS (PERCENT) $k(RI) \times RCR = 5$									
$k = 0.60$	55	44	36	54	43	36	53	43	36	29
0.80	65	53	46	64	53	45	62	52	45	38
1.00	73	62	54	72	61	54	69	62	53	45
1.25	80	69	62	79	68	61	75	67	60	52
1.50	85	75	68	83	74	67	80	72	66	57
2.00	92	83	76	90	82	75	86	79	73	64
2.50	96	88	82	94	86	80	89	83	78	69
3.00	100	92	86	97	91	85	92	87	82	73
4.00	104	98	93	101	96	91	96	92	88	77
5.00	107	101	97	104	99	95	98	95	91	80
ROOM INDEX	UF (total)									Direct
According to DIN EN 13032-2 2004			Suspended					SHRNOM = 1.25		

C Range: 0 - 360DEG
 C Interval: 30.0DEG
 Test Speed: HIGH
 Temperature: 25.3 °C
 Operators:
 Test Date: 2025-04-16

γ Range: 0 - 180DEG
 γ Interval: 1.0DEG
 Test System: EVERFINE GO-2000B_V1 SYSTEM V2.00.488
 Humidity: 65.0%
 Test Distance: 6.360m [K=1.0000]
 Remarks:

ISOCANDELA DIAGRAM

Test:U:48.00V I:0.0996A P:4.781W PF:1.000 Freq:0Hz Lamp Flux:309.68x1 lm		
NAME: SF33-48V-2835-96-CC-4000K-80	TYPE:	WEIGHT:
SPEC.:	DIM.: Length=1m	SERIAL No.:
MFR.: OLympia lighting	SUR.:	Shielding Angle:

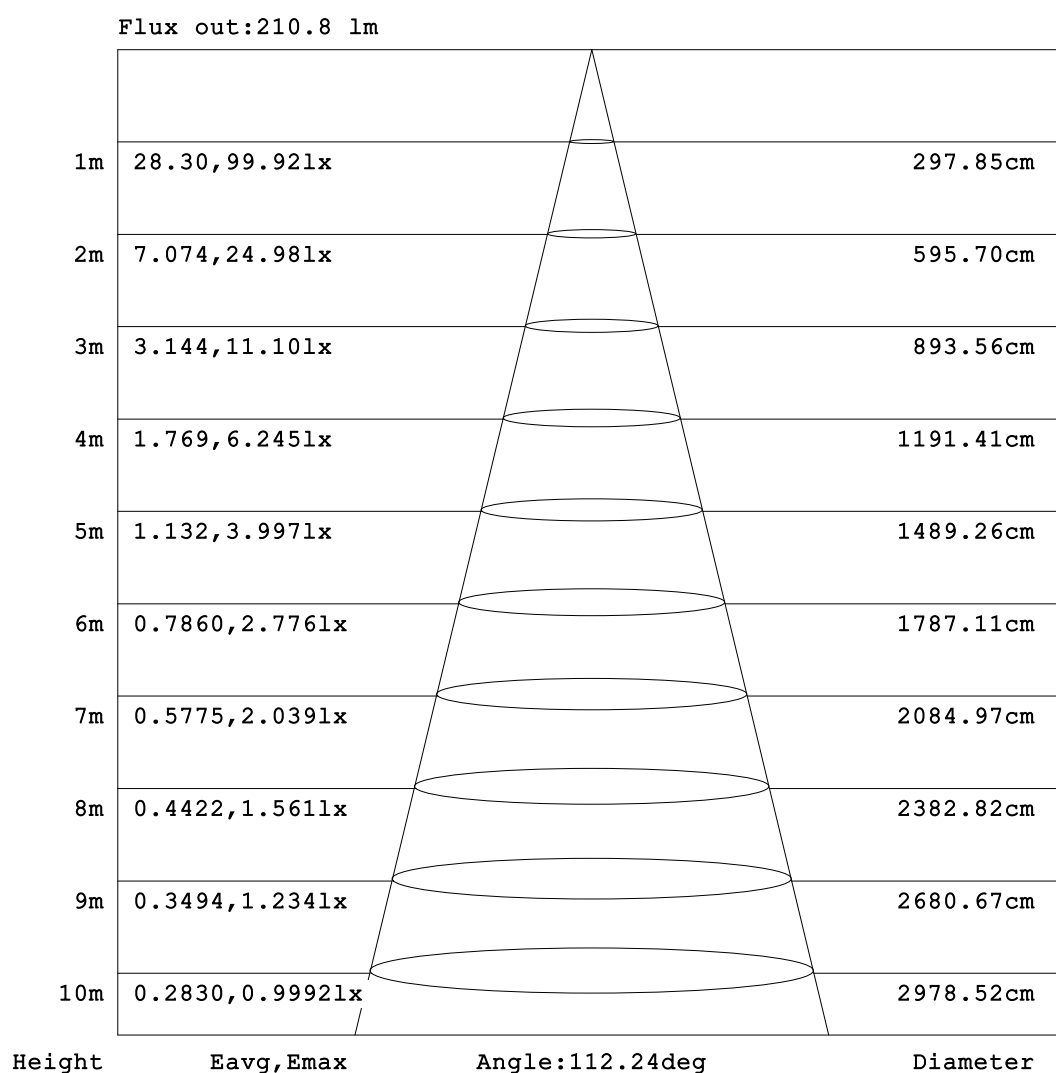


C Range: 0 - 360DEG
C Interval: 30.0DEG
Test Speed: HIGH
Temperature:25.3℃
Operators:
Test Date:2025-04-16

γ Range: 0 - 180DEG
γ Interval: 1.0DEG
Test System:EVERFINE GO-2000B_V1 SYSTEM V2.00.488
Humidity:65.0%
Test Distance:6.360m [K=1.0000]
Remarks:

AAI Figure

Test:U:48.00V I:0.0996A P:4.781W PF:1.000 Freq:0Hz Lamp Flux:309.68x1 lm		
NAME: SF33-48V-2835-96-CC-4000K-80	TYPE:	WEIGHT:
SPEC.:	DIM.: Length=1m	SERIAL No.:
MFR.: OLympia lighting	SUR.:	Shielding Angle:



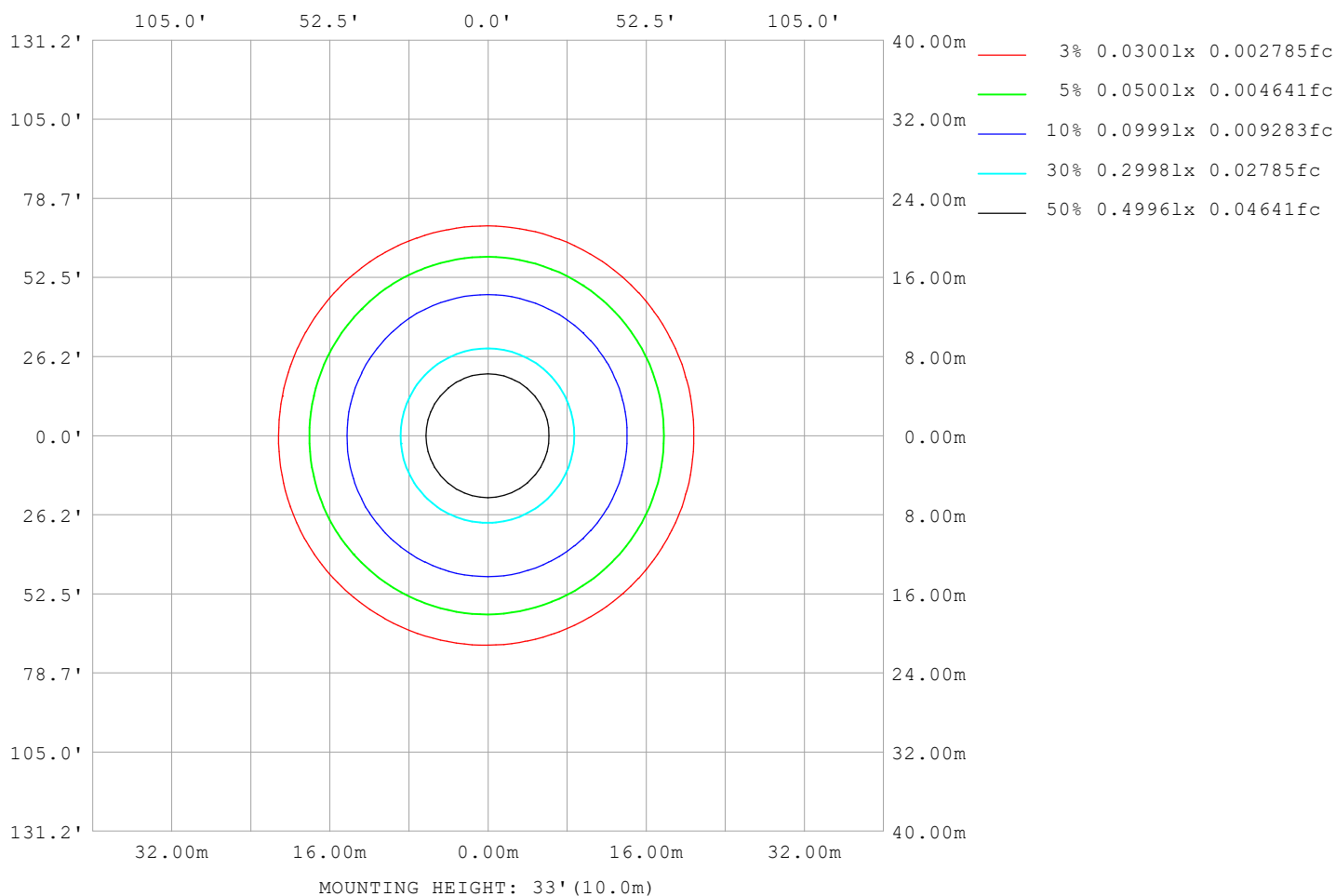
Note:The Curves indicate the illuminated area and the average illumination when the luminaire is at different distance.

C Range: 0 - 360DEG
C Interval: 30.0DEG
Test Speed: HIGH
Temperature:25.3℃
Operators:
Test Date:2025-04-16

γ Range: 0 - 180DEG
γ Interval: 1.0DEG
Test System:EVERFINE GO-2000B_V1 SYSTEM V2.00.488
Humidity:65.0%
Test Distance:6.360m [K=1.0000]
Remarks:

ISOLUX DIAGRAM

Test:U:48.00V I:0.0996A P:4.781W PF:1.000 Freq:0Hz Lamp Flux:309.68x1 lm		
NAME: SF33-48V-2835-96-CC-4000K-80	TYPE:	WEIGHT:
SPEC.:	DIM.: Length=1m	SERIAL No.:
MFR.: OLympia lighting	SUR.:	Shielding Angle:



C Range: 0 - 360DEG
C Interval: 30.0DEG
Test Speed: HIGH
Temperature: 25.3°C
Operators:
Test Date: 2025-04-16

γ Range: 0 - 180DEG
γ Interval: 1.0DEG
Test System: EVERFINE GO-2000B_V1 SYSTEM V2.00.488
Humidity: 65.0%
Test Distance: 6.360m [K=1.0000]
Remarks:

LED Avg.L Report

Test:U:48.00V I:0.0996A P:4.781W PF:1.000 Freq:0Hz Lamp Flux:309.68x1 lm		
NAME: SF33-48V-2835-96-CC-4000K-80	TYPE:	WEIGHT:
SPEC.:	DIM.: Length=1m	SERIAL No.:
MFR.: OLympia lighting	SUR.:	Shielding Angle:

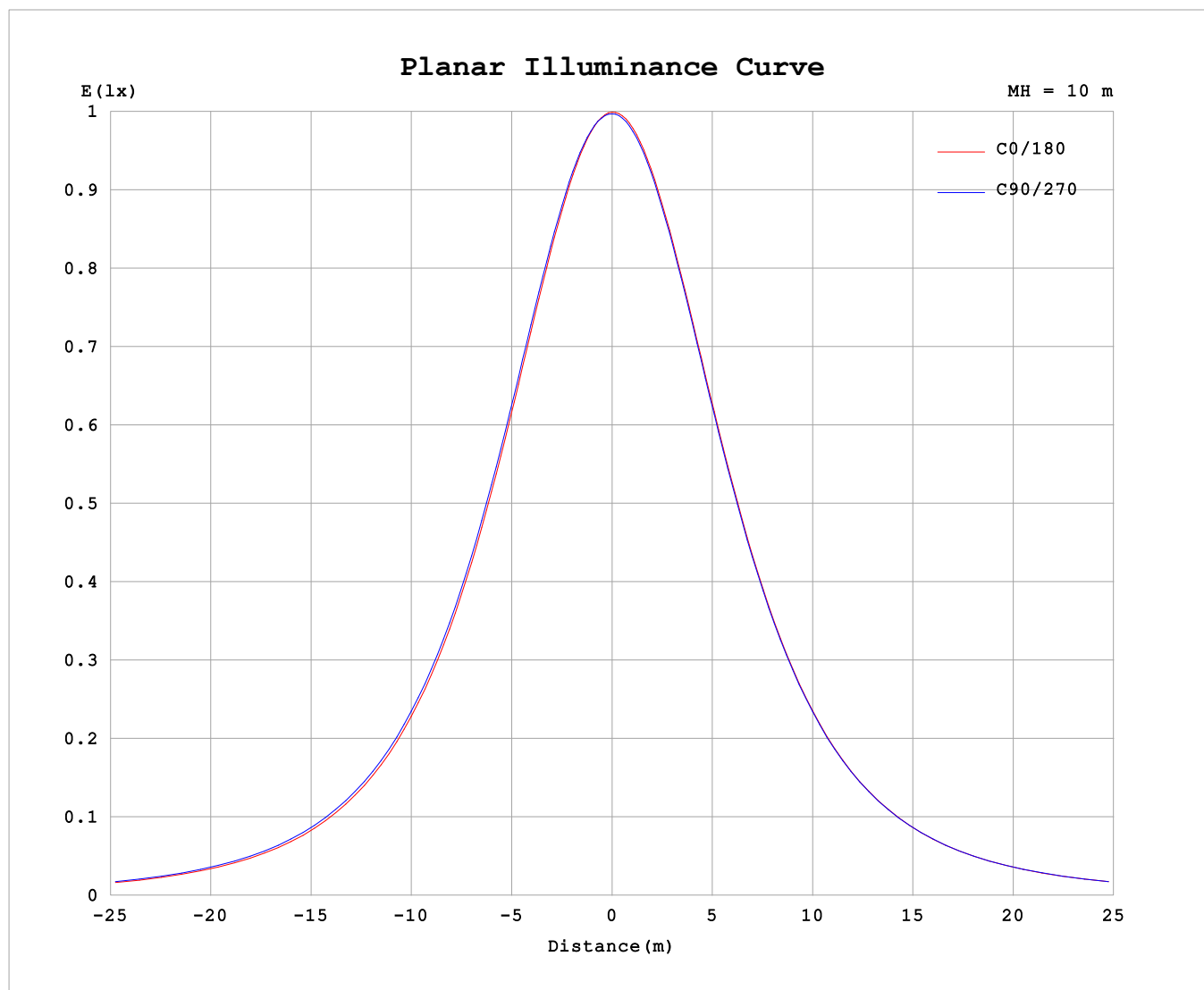
AvgL	cd/m2
L_0~180 (65) av	3967
L_0~180 (75) av	3895
L_0~180 (85) av	4282
L_90~270 (65) av	4110
L_90~270 (75) av	4154
L_90~270 (85) av	4773
L_45 (65) av	4062
L_45 (75) av	4044
L_45 (85) av	4539

Standard: GB/T 29293-2012

C Range: 0 - 360DEG
C Interval: 30.0DEG
Test Speed: HIGH
Temperature:25.3℃
Operators:
Test Date:2025-04-16

γ Range: 0 - 180DEG
γ Interval: 1.0DEG
Test System:EVERFINE GO-2000B_V1 SYSTEM V2.00.488
Humidity:65.0%
Test Distance:6.360m [K=1.0000]
Remarks:

Planar Illuminance Curve



C Range: 0 - 360DEG
C Interval: 30.0DEG
Test Speed: HIGH
Temperature: 25.3 °C
Operators:
Test Date: 2025-04-16

γ Range: 0 - 180DEG
 γ Interval: 1.0DEG
Test System: EVERFINE GO-2000B_V1 SYSTEM V2.00.488
Humidity: 65.0%
Test Distance: 6.360m [K=1.0000]
Remarks:

LUMINOUS DISTRIBUTION INTENSITY DATA

Test:U:48.00V I:0.0996A P:4.781W PF:1.000 Freq:0Hz Lamp Flux:309.68x1 lm		
NAME: SF33-48V-2835-96-CC-4000K-80	TYPE:	WEIGHT:
SPEC.:	DIM.: Length=1m	SERIAL No.:
MFR.: OLympia lighting	SUR.:	Shielding Angle:

Table--1

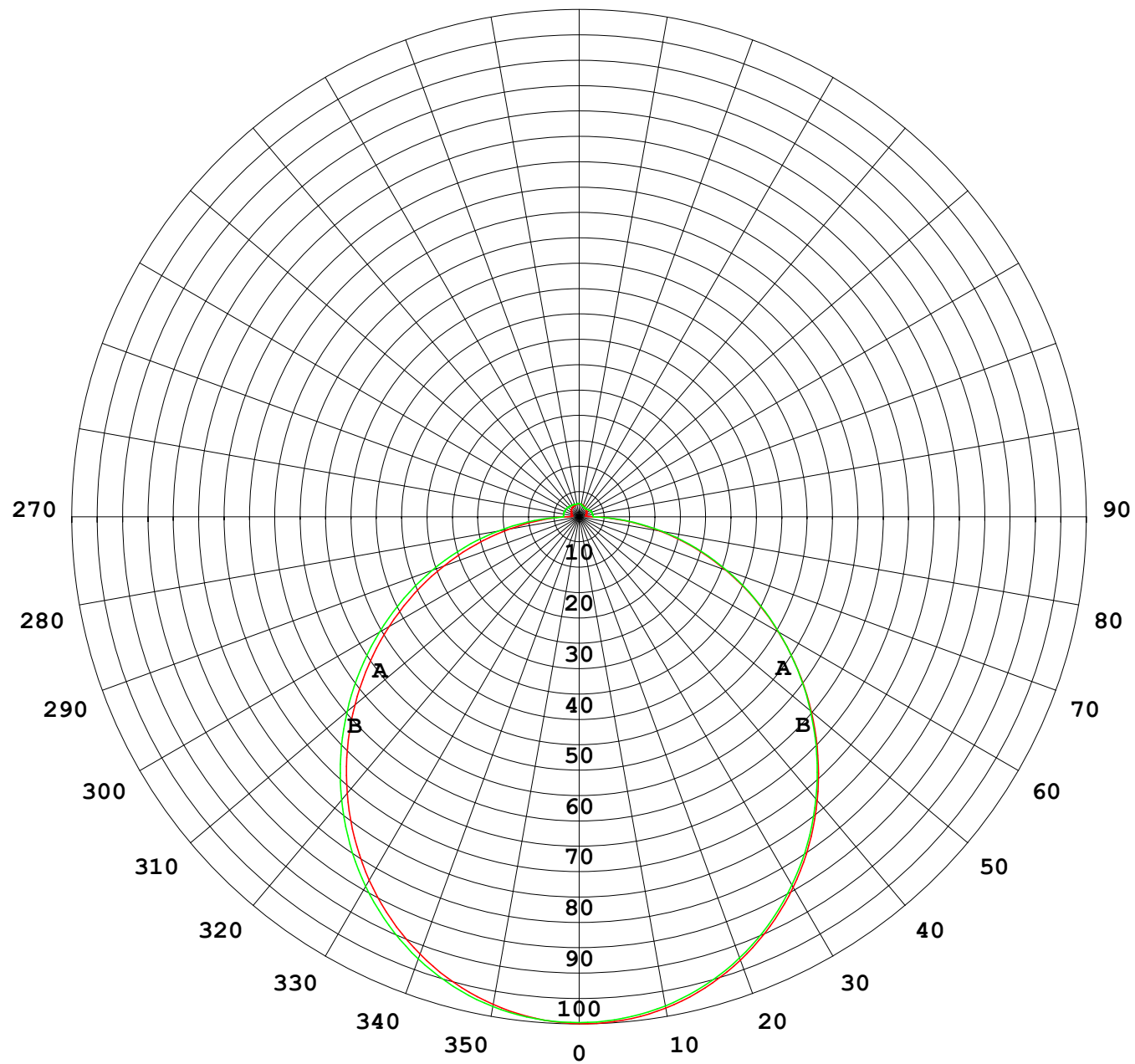
UNIT: cd

C (DEG) γ (DEG)	0	30	60	90	120	150	180	210	240	270	300	330							
0	99.7	99.7	99.7	99.7	99.7	99.7	99.7	99.7	99.7	99.7	99.7	99.7							
5	99.1	99.2	99.3	99.4	99.4	99.4	99.4	99.4	99.4	99.3	99.2	99.2							
10	97.4	97.7	97.9	98.1	98.2	98.2	98.2	98.1	98.1	98.0	97.8	97.7							
15	94.9	95.3	95.6	95.9	96.0	96.0	96.0	95.9	95.9	95.7	95.5	95.2							
20	91.6	92.0	92.5	92.8	93.0	93.0	92.8	92.9	92.8	92.6	92.3	92.0							
25	87.5	88.0	88.4	88.9	89.1	89.1	88.9	88.9	88.9	88.6	88.3	87.9							
30	82.6	83.2	83.7	84.2	84.5	84.5	84.2	84.3	84.3	83.9	83.6	83.1							
35	77.1	77.8	78.3	78.8	79.2	79.2	78.9	78.9	79.0	78.6	78.2	77.6							
40	71.0	71.7	72.3	72.9	73.3	73.4	72.9	73.0	73.1	72.7	72.3	71.7							
45	64.5	65.2	65.9	66.5	66.9	67.1	66.4	66.6	66.7	66.3	65.9	65.2							
50	57.6	58.4	59.0	59.7	60.1	60.3	59.6	59.8	60.0	59.6	59.1	58.3							
55	50.5	51.2	52.0	52.7	53.1	53.3	52.5	52.7	53.0	52.6	52.1	51.2							
60	43.2	43.9	44.7	45.5	45.9	46.1	45.3	45.5	45.8	45.5	44.9	43.9							
65	35.8	36.5	37.3	38.2	38.6	38.7	38.0	38.2	38.6	38.3	37.6	36.5							
70	28.4	29.1	29.9	30.8	31.2	31.3	30.7	30.8	31.3	31.0	30.2	29.1							
75	21.0	21.7	22.5	23.5	23.8	23.9	23.4	23.6	24.0	23.8	22.9	21.8							
80	13.8	14.4	15.1	16.2	16.5	16.6	16.1	16.3	16.8	16.6	15.6	14.5							
85	7.45	7.85	8.08	8.86	9.14	9.34	8.97	9.15	9.59	9.44	8.57	7.88							
90	2.92	3.19	3.18	3.10	3.50	3.88	3.47	3.45	3.30	2.90	3.21	3.07							
95	1.44	1.98	2.78	3.13	2.89	2.36	1.47	1.67	2.18	2.75	2.38	1.55							
100	1.47	2.03	2.78	3.13	2.92	2.30	1.32	1.57	2.18	2.72	2.31	1.56							
105	1.56	2.09	2.81	3.12	2.95	2.30	1.39	1.60	2.18	2.71	2.30	1.59							
110	1.67	2.15	2.82	3.11	2.95	2.32	1.47	1.65	2.14	2.68	2.29	1.65							
115	1.77	2.20	2.82	3.08	2.95	2.34	1.56	1.70	2.10	2.63	2.18	1.69							
120	1.87	2.26	2.82	3.03	2.93	2.36	1.65	1.75	2.08	2.52	2.12	1.72							
125	1.97	2.29	2.81	2.98	2.89	2.37	1.74	1.81	2.06	2.39	1.99	1.82							
130	2.05	2.33	2.78	2.92	2.83	2.39	1.82	1.86	2.05	2.25	1.93	1.89							
135	2.13	2.35	2.74	2.86	2.78	2.40	1.92	1.93	2.04	2.14	1.91	1.74							
140	2.20	2.37	2.71	2.80	2.72	2.41	2.01	2.01	2.05	2.05	1.91	1.81							
145	2.27	2.39	2.67	2.75	2.68	2.42	2.09	2.09	2.09	2.03	1.94	1.89							
150	2.33	2.41	2.64	2.70	2.65	2.44	2.18	2.17	2.17	2.08	2.03	1.98							
155	2.39	2.43	2.61	2.66	2.63	2.46	2.27	2.26	2.25	2.16	2.19	2.07							
160	2.45	2.47	2.59	2.63	2.61	2.49	2.35	2.34	2.32	2.25	2.24	2.16							
165	2.50	2.52	2.57	2.59	2.58	2.51	2.43	2.42	2.42	2.37	2.36	2.24							
170	2.54	2.55	2.57	2.59	2.57	2.55	2.50	2.49	2.52	2.49	2.49	2.45							
175	2.56	2.58	2.58	2.61	2.57	2.58	2.55	2.54	2.58	2.56	2.57	2.53							
180	2.58	2.58	2.60	2.61	2.59	2.58	2.58	2.58	2.60	2.61	2.61	2.57							

C Range: 0 - 360DEG
C Interval: 30.0DEG
Test Speed: HIGH
Temperature:25.3℃
Operators:
Test Date:2025-04-16

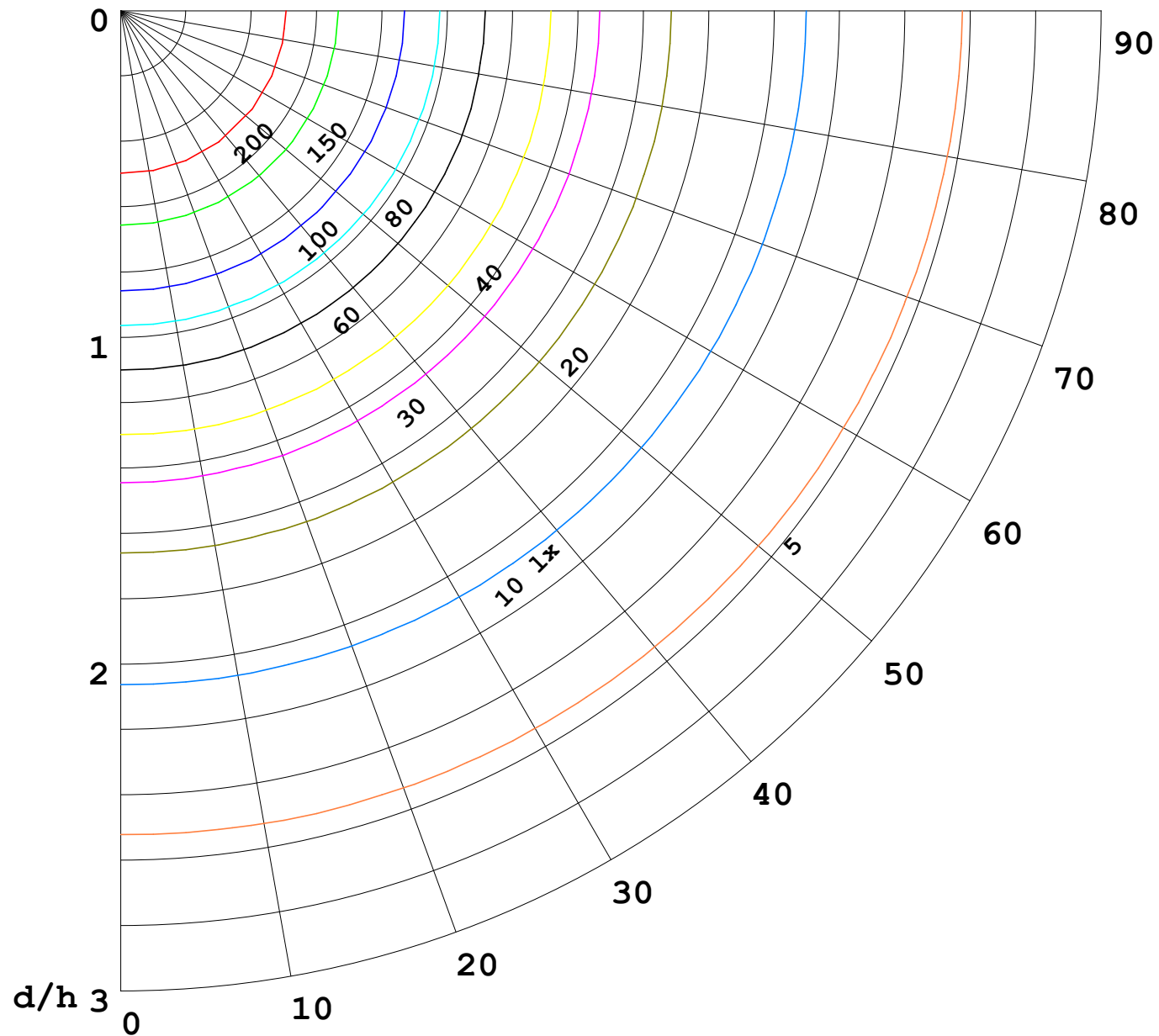
γ Range: 0 - 180DEG
γ Interval: 1.0DEG
Test System:EVERFINE GO-2000B_V1 SYSTEM V2.00.488
Humidity:65.0%
Test Distance:6.360m [K=1.0000]
Remarks:

I (cd)



1000 lm

$\kappa = 1$



F = 1000 lm
 K = 0.7
 Hcc = 0.8 m
 Hfc = 0.0 m
 Eave = 100 lx

	Pcc	Pw	Pfc
—————	70	50	30
—————	50	30	20

