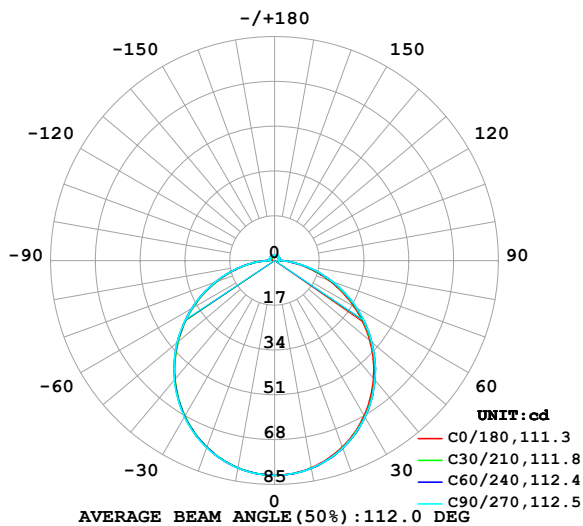


LUMINAIRE PHOTOMETRIC TEST REPORT

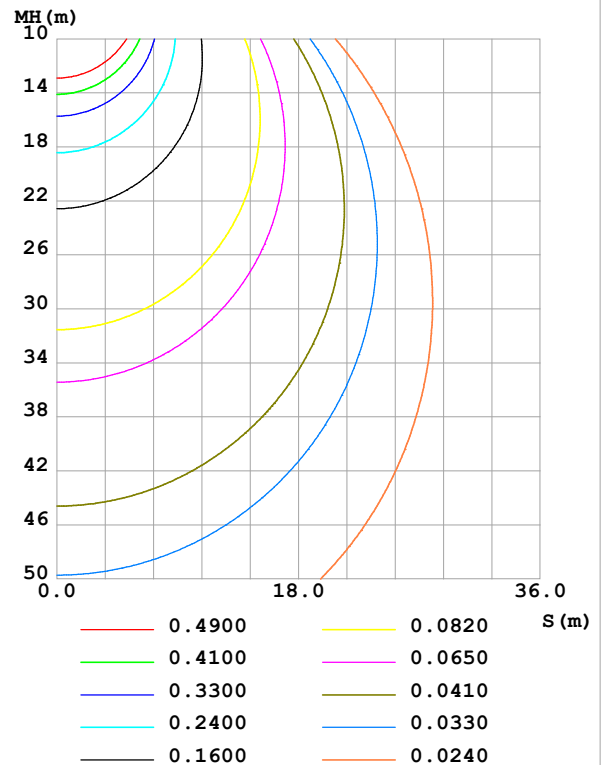
Test:U:48.00V I:0.1029A P:4.939W PF:1.000 Freq:0Hz Lamp Flux:248.855x1 lm		
NAME: SF33-48V-2835-96-CC-3000K-80	TYPE:	WEIGHT:
SPEC.:	DIM.: Length=1m	SERIAL No.:
MFR.: OLympia lighting	SUR.:	Shielding Angle:

DATA OF LAMP		PHOTOMETRIC DATA Eff: 50.38 lm/W			
MODEL	2835	I _{max} (cd)	81.49	S/MH(C0/180)	1.25
NOMINAL POWER(W)	5	LOR(%)	100.0	S/MH(C90/270)	1.25
RATED VOLTAGE(V)	48	TOTAL FLUX(lm)	248.85	η UP,DN(C0-180)	2.3,47.4
NOMINAL FLUX(lm)	248.855	CIE CLASS	DIRECT	η UP,DN(C180-360)	2.5,47.8
LAMPS INSIDE	1	η up (%)	4.8	CIBSE SHR NOM	1.25
TEST VOLTAGE(V)		η down (%)	95.2	CIBSE SHR MAX	1.35

LUMINOUS INTENSITY DISTRIBUTION DIAGRAM



C0 PLANE ISOLUX DIAGRAM (UNIT:lx)



C Range: 0 - 360DEG
C Interval: 30.0DEG
Test Speed: HIGH
Temperature: 25.3 °C
Operators:
Test Date: 2025-02-18

γ Range: 0 - 180DEG
γ Interval: 1.0DEG
Test System: EVERFINE GO-2000B_V1 SYSTEM V2.00.488
Humidity: 65.0%
Test Distance: 6.360m [K=1.0000]
Remarks:

ZONAL FLUX DIAGRAM

ZONAL FLUX DIAGRAM:

γ	C0	C45	C90	C135	C180	C225	C270	C315	γ	Φ zone	Φ total	%lum, lamp
10	79.88	80.09	80.07	79.93	79.98	79.89	79.99	80.07	0- 10	7.708	7.708	3.1,3.1
20	75.26	75.66	75.68	75.43	75.43	75.37	75.56	75.65	10- 20	22.04	29.75	12,12
30	68.02	68.56	68.62	68.31	68.28	68.25	68.49	68.59	20- 30	33.30	63.05	25.3,25.3
40	58.45	59.15	59.26	58.97	58.92	58.94	59.20	59.27	30- 40	40.01	103.1	41.4,41.4
50	47.18	47.98	48.15	48.00	47.91	48.03	48.26	48.22	40- 50	41.41	144.5	58.1,58.1
60	34.75	35.65	35.95	36.01	35.95	36.09	36.30	36.03	50- 60	37.57	182.0	73.1,73.1
70	22.03	22.99	23.36	23.68	23.47	23.80	23.97	23.50	60- 70	29.33	211.4	84.9,84.9
80	10.24	11.15	11.41	11.98	11.80	12.14	12.17	11.68	70- 80	18.37	229.7	92.3,92.3
90	2.070	2.248	1.554	3.120	3.110	3.150	2.234	2.610	80- 90	7.193	236.9	95.2,95.2
100	1.321	1.596	1.562	2.016	1.436	1.993	2.183	1.781	90-100	2.122	239.0	96.1,96.1
110	1.465	1.697	1.640	1.960	1.462	1.967	2.186	1.836	100-110	1.887	240.9	96.8,96.8
120	1.609	1.801	1.776	1.964	1.574	1.980	2.146	1.863	110-120	1.818	242.8	97.5,97.5
130	1.741	1.870	1.932	1.967	1.693	1.997	2.096	1.872	120-130	1.690	244.4	98.2,98.2
140	1.842	1.916	2.024	1.950	1.785	2.019	2.062	1.846	130-140	1.486	245.9	98.8,98.8
150	1.935	1.979	2.088	1.985	1.794	2.006	2.044	1.868	140-150	1.222	247.2	99.3,99.3
160	2.013	2.055	2.137	2.076	1.949	2.013	2.044	1.918	150-160	0.9198	248.1	99.7,99.7
170	2.076	2.106	2.140	2.148	2.068	2.077	2.065	2.029	160-170	0.5830	248.7	99.9,99.9
180	2.105	2.124	2.140	2.135	2.105	2.123	2.134	2.125	170-180	0.2005	248.9	100,100
DEG	LUMINOUS INTENSITY:cd									UNIT:lm		

Conical surface Flux(90deg): 123.93 lm

%lum = 49.8%

%lamp = 49.8%

Conical surface Flux(130deg): 197.95 lm

%lum = 79.5%

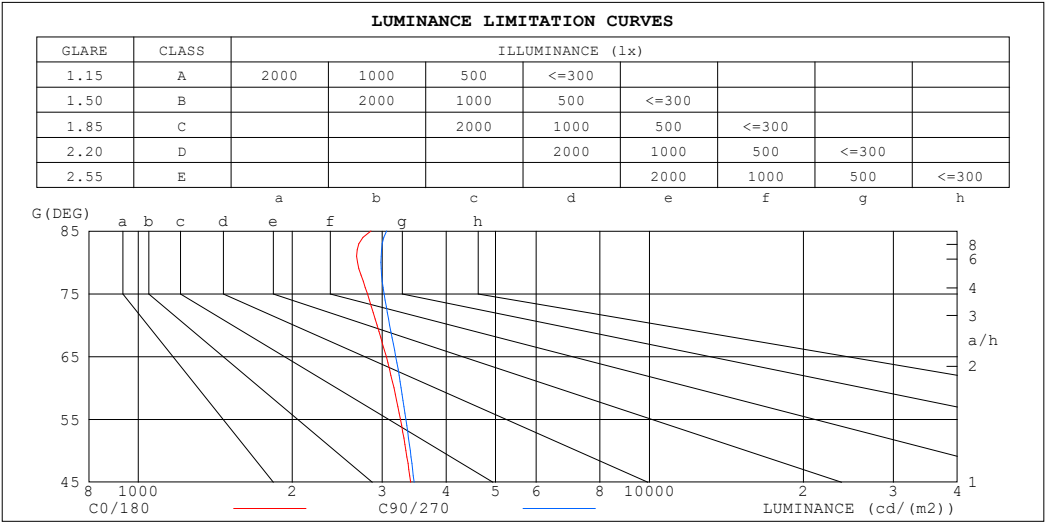
%lamp = 79.5%

C Range: 0 - 360DEG
 C Interval: 30.0DEG
 Test Speed: HIGH
 Temperature:25.3℃
 Operators:
 Test Date:2025-02-18

γ Range: 0 - 180DEG
 γ Interval: 1.0DEG
 Test System:EVERFINE GO-2000B_V1 SYSTEM V2.00.488
 Humidity:65.0%
 Test Distance:6.360m [K=1.0000]
 Remarks:

LUMINANCE LIMITATION CURVES

Test:U:48.00V I:0.1029A P:4.939W PF:1.000 Freq:0Hz Lamp Flux:248.855x1 lm		
NAME: SF33-48V-2835-96-CC-3000K-80	TYPE:	WEIGHT:
SPEC.:	DIM.: Length=1m	SERIAL No.:
MFR.: OLympia lighting	SUR.:	Shielding Angle:



LUMINANCE cd/(m2)		
G (DEG)	C0/180	C90/270
85	2850	3062
80	2683	2984
75	2806	3025
70	2931	3102
65	3054	3188
60	3162	3267
55	3257	3337
50	3339	3403
45	3408	3463

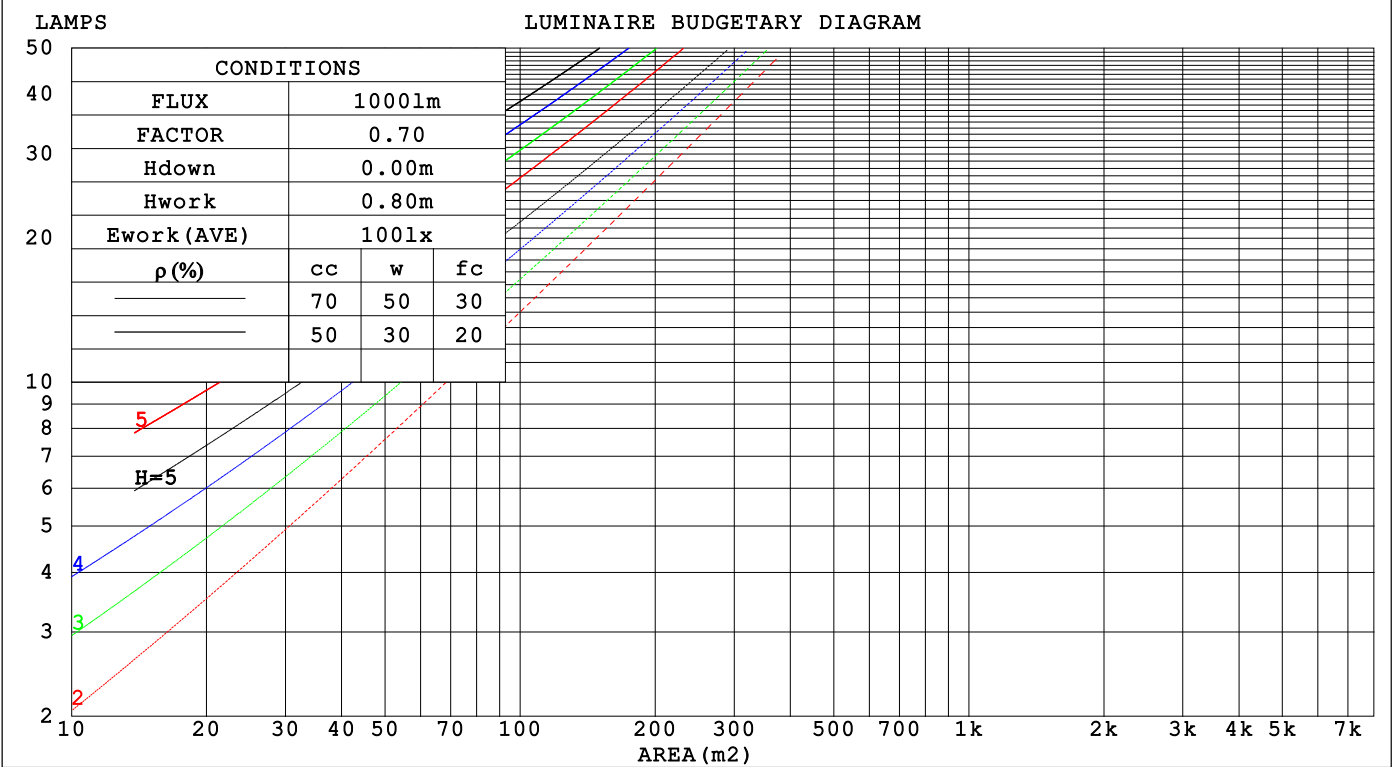
C Range: 0 - 360DEG
C Interval: 30.0DEG
Test Speed: HIGH
Temperature:25.3℃
Operators:
Test Date:2025-02-18

γ Range: 0 - 180DEG
γ Interval: 1.0DEG
Test System:EVERFINE GO-2000B_V1 SYSTEM V2.00.488
Humidity:65.0%
Test Distance:6.360m [K=1.0000]
Remarks:

CU AND LUMINAIRE BUDGETARY ESTIMATE DIAGRAM

Test:U:48.00V I:0.1029A P:4.939W PF:1.000 Freq:0Hz		
Lamp Flux:248.855x1 lm		
NAME: SF33-48V-2835-96-CC-3000K-80	TYPE:	WEIGHT:
SPEC.:	DIM.: Length=1m	SERIAL No.:
MFR.: OLYMPIA lighting	SUR.:	Shielding Angle:

pcc	80%			70%			50%			30%			10%			0
ρw	50%	30%	10%	50%	30%	10%	50%	30%	10%	50%	30%	10%	50%	30%	10%	0
ρfc	20%			20%			20%			20%			20%			0
RCR	RCR:Room Cavity Ratio			Coefficients of Utilization(CU)												
0.0	1.18	1.18	1.18	1.15	1.15	1.15	1.08	1.08	1.08	1.03	1.03	1.03	.98	.98	.98	.95
1.0	1.02	.98	.94	.99	.95	.92	.94	.91	.88	.89	.87	.84	.85	.83	.81	.78
2.0	.89	.82	.76	.86	.80	.74	.82	.77	.72	.78	.74	.70	.74	.71	.67	.65
3.0	.78	.69	.63	.76	.68	.62	.72	.66	.60	.69	.63	.58	.65	.61	.57	.54
4.0	.69	.60	.53	.67	.59	.52	.64	.57	.51	.61	.55	.50	.58	.53	.49	.46
5.0	.61	.52	.46	.60	.51	.45	.57	.50	.44	.55	.48	.43	.52	.47	.42	.40
6.0	.55	.46	.40	.54	.45	.39	.52	.44	.39	.49	.43	.38	.47	.42	.37	.35
7.0	.50	.41	.35	.49	.41	.35	.47	.39	.34	.45	.38	.34	.43	.37	.33	.31
8.0	.46	.37	.31	.45	.37	.31	.43	.36	.30	.41	.35	.30	.40	.34	.29	.28
9.0	.42	.34	.28	.41	.33	.28	.39	.32	.27	.38	.32	.27	.37	.31	.27	.25
10.0	.39	.31	.25	.38	.30	.25	.37	.30	.25	.35	.29	.24	.34	.28	.24	.22



C Range: 0 - 360DEG
C Interval: 30.0DEG
Test Speed: HIGH
Temperature:25.3℃
Operators:
Test Date:2025-02-18

γ Range: 0 - 180DEG
γ Interval: 1.0DEG
Test System:EVERFINE GO-2000B_V1 SYSTEM V2.00.488
Humidity:65.0%
Test Distance:6.360m [K=1.0000]
Remarks:

WEC AND CCEC

Test:U:48.00V I:0.1029A P:4.939W PF:1.000 Freq:0Hz Lamp Flux:248.855x1 lm		
NAME: SF33-48V-2835-96-CC-3000K-80	TYPE:	WEIGHT:
SPEC.:	DIM.: Length=1m	SERIAL No.:
MFR.: OLympia lighting	SUR.:	Shielding Angle:

pcc	80%			70%			50%			30%			10%			0
pw	50%	30%	10%	50%	30%	10%	50%	30%	10%	50%	30%	10%	50%	30%	10%	0
pfc	20%			20%			20%			20%			20%			0
RCR	RCR:Room Cavity Ratio						Wall Exitance Coefficients(WEC)									
0.0																
1.0	.322	.183	.058	.314	.179	.057	.298	.171	.055	.283	.163	.052	.269	.156	.050	
2.0	.298	.163	.050	.290	.160	.049	.276	.153	.048	.263	.147	.046	.251	.142	.045	
3.0	.273	.145	.044	.267	.143	.043	.254	.138	.042	.242	.133	.041	.231	.128	.040	
4.0	.251	.130	.038	.245	.128	.038	.234	.124	.037	.223	.120	.036	.213	.116	.035	
5.0	.231	.118	.034	.226	.116	.034	.216	.112	.033	.206	.109	.032	.197	.105	.032	
6.0	.214	.107	.031	.209	.106	.030	.200	.103	.030	.191	.099	.029	.183	.097	.029	
7.0	.199	.098	.028	.195	.097	.028	.186	.094	.027	.179	.092	.027	.171	.089	.026	
8.0	.186	.091	.025	.182	.089	.025	.174	.087	.025	.167	.085	.024	.160	.082	.024	
9.0	.174	.084	.023	.170	.083	.023	.163	.081	.023	.157	.079	.023	.151	.077	.022	
10.0	.163	.078	.022	.160	.077	.022	.154	.075	.021	.148	.073	.021	.142	.072	.021	

pcc	80%			70%			50%			30%			10%			0
pw	50%	30%	10%	50%	30%	10%	50%	30%	10%	50%	30%	10%	50%	30%	10%	0
pfc	20%			20%			20%			20%			20%			0
RCR	RCR:Room Cavity Ratio						Ceiling Cavity Exitance Coefficients (CCEC)									
0.0	.227	.227	.227	.194	.194	.194	.132	.132	.132	.076	.076	.076	.024	.024	.024	
1.0	.218	.193	.170	.187	.166	.146	.128	.114	.101	.073	.066	.059	.024	.021	.019	
2.0	.210	.169	.134	.180	.145	.116	.123	.101	.081	.071	.059	.047	.023	.019	.015	
3.0	.202	.152	.111	.174	.131	.096	.119	.091	.068	.069	.053	.040	.022	.017	.013	
4.0	.195	.138	.095	.167	.120	.083	.115	.083	.058	.066	.049	.035	.021	.016	.011	
5.0	.187	.128	.085	.161	.111	.074	.111	.077	.052	.064	.045	.031	.021	.015	.010	
6.0	.180	.120	.077	.155	.104	.067	.107	.073	.047	.062	.043	.028	.020	.014	.009	
7.0	.173	.113	.071	.149	.098	.062	.103	.069	.044	.060	.040	.026	.019	.013	.009	
8.0	.167	.107	.067	.144	.093	.058	.099	.065	.041	.058	.039	.025	.019	.013	.008	
9.0	.161	.102	.063	.138	.089	.055	.096	.062	.039	.056	.037	.023	.018	.012	.008	
10.0	.155	.098	.060	.134	.085	.053	.093	.060	.037	.054	.035	.022	.018	.012	.007	

C Range: 0 - 360DEG
C Interval: 30.0DEG
Test Speed: HIGH
Temperature:25.3℃
Operators:
Test Date:2025-02-18

γ Range: 0 - 180DEG
γ Interval: 1.0DEG
Test System:EVERFINE GO-2000B_V1 SYSTEM V2.00.488
Humidity:65.0%
Test Distance:6.360m [K=1.0000]
Remarks:

UGR(Unified Glare Rating) Table

Test:U:48.00V I:0.1029A P:4.939W PF:1.000 Freq:0Hz Lamp Flux:248.855x1 lm											
NAME: SF33-48V-2835-96-CC-3000K-80					TYPE:			WEIGHT:			
SPEC.:					DIM.: Length=1m			SERIAL No.:			
MFR.: OLympia lighting					SUR.:			Shielding Angle:			
ceiling/cavity	0.7	0.7	0.5	0.5	0.3	0.7	0.7	0.5	0.5	0.3	
walls	0.5	0.3	0.5	0.3	0.3	0.5	0.3	0.5	0.3	0.3	
working plane	0.2	0.2	0.2	0.2	0.2	0.2	0.2	0.2	0.2	0.2	
Room dimensions		Viewed crosswise					Viewed endwise				
x = 2H y = 2H	2H	21.5	22.9	21.8	23.2	23.5	21.6	23.1	21.9	23.3	23.6
	3H	23.0	24.4	23.4	24.7	25.0	23.2	24.5	23.5	24.9	25.2
	4H	23.6	24.9	24.0	25.3	25.6	23.9	25.2	24.3	25.5	25.9
	6H	24.1	25.4	24.6	25.7	26.1	24.4	25.6	24.8	26.0	26.4
	8H	24.3	25.5	24.7	25.9	26.3	24.6	25.8	25.1	26.2	26.6
	12H	24.5	25.6	24.9	26.0	26.4	24.8	25.9	25.2	26.3	26.7
4H	2H	22.1	23.4	22.5	23.7	24.1	22.2	23.5	22.6	23.8	24.2
	3H	23.8	24.9	24.2	25.3	25.7	24.0	25.1	24.4	25.5	25.9
	4H	24.6	25.6	25.1	26.0	26.5	24.8	25.8	25.2	26.2	26.7
	6H	25.2	26.2	25.7	26.6	27.1	25.5	26.4	26.0	26.9	27.3
	8H	25.5	26.4	26.0	26.8	27.3	25.8	26.6	26.3	27.1	27.6
	12H	25.7	26.5	26.2	27.0	27.5	26.0	26.8	26.5	27.3	27.8
8H	4H	24.9	25.8	25.4	26.2	26.7	25.1	25.9	25.6	26.4	26.9
	6H	25.7	26.5	26.3	26.9	27.5	26.0	26.7	26.5	27.2	27.7
	8H	26.1	26.7	26.6	27.2	27.8	26.4	27.0	26.9	27.5	28.1
	12H	26.4	27.0	27.0	27.5	28.1	26.7	27.3	27.3	27.8	28.4
12H	4H	24.9	25.7	25.4	26.2	26.7	25.1	25.9	25.6	26.4	26.9
	6H	25.8	26.5	26.4	27.0	27.5	26.1	26.7	26.6	27.2	27.7
	8H	26.3	26.8	26.8	27.3	27.9	26.5	27.0	27.1	27.6	28.2
Variations with the observer position at spacings(CIE Pub.117):											
S = 1.0H		+ 0.1 / - 0.2					+ 0.1 / - 0.2				
1.5H		+ 0.2 / - 0.3					+ 0.2 / - 0.3				
2.0H		+ 0.1 / - 0.3					+ 0.1 / - 0.3				

CIE Pub.117, 248.9 lm Total Lamp Luminous Flux Correct (8log(F/F0) = -4.8)
Area: 0.022 m2

C Range: 0 - 360DEG
C Interval: 30.0DEG
Test Speed: HIGH
Temperature:25.3℃
Operators:
Test Date:2025-02-18

γ Range: 0 - 180DEG
γ Interval: 1.0DEG
Test System:EVERFINE GO-2000B_V1 SYSTEM V2.00.488
Humidity:65.0%
Test Distance:6.360m [K=1.0000]
Remarks:

UTILIZATION FACTORS TABLE

Test:U:48.00V I:0.1029A P:4.939W PF:1.000 Freq:0Hz Lamp Flux:248.855x1 lm		
NAME: SF33-48V-2835-96-CC-3000K-80	TYPE:	WEIGHT:
SPEC.:	DIM.: Length=1m	SERIAL No.:
MFR.: OLympia lighting	SUR.:	Shielding Angle:

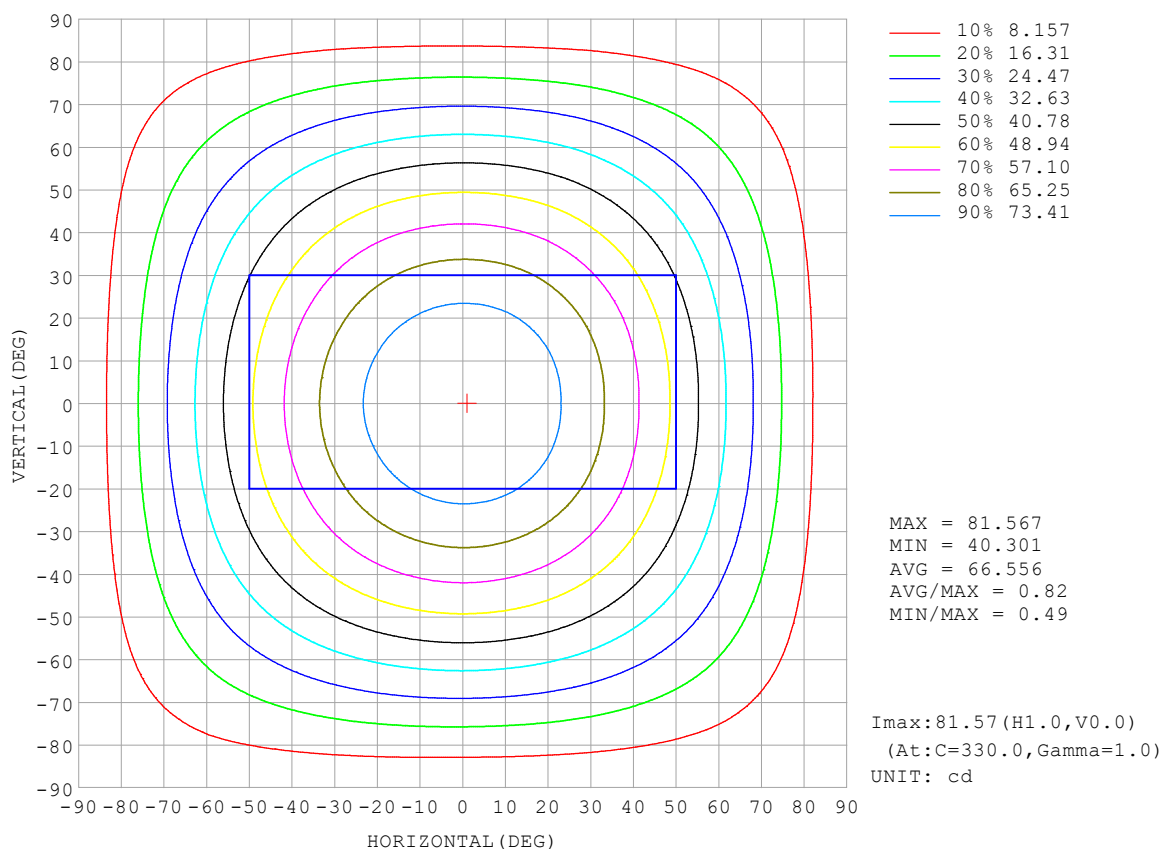
REFLECTANCE										
Ceiling	0.8	0.8	0.8	0.7	0.7	0.7	0.5	0.5	0.5	0
Walls	0.7	0.5	0.3	0.7	0.5	0.3	0.7	0.5	0.3	0
Working plane	0.2	0.2	0.2	0.2	0.2	0.2	0.2	0.2	0.2	0
ROOM INDEX	UTILIZATION FACTORS (PERCENT) $k(RI) \times RCR = 5$									
$k = 0.60$	56	44	37	55	44	37	53	43	36	30
0.80	65	54	46	64	53	46	62	52	45	38
1.00	74	62	55	72	62	54	70	63	54	46
1.25	81	70	62	79	69	62	76	67	61	53
1.50	86	75	68	84	74	67	80	72	66	58
2.00	93	84	77	90	82	76	86	79	74	65
2.50	97	88	82	94	87	81	90	84	79	69
3.00	100	93	87	97	91	86	93	87	83	73
4.00	104	98	93	101	96	91	96	92	88	78
5.00	107	102	97	104	99	95	98	95	91	81
ROOM INDEX	UF (total)									Direct
According to DIN EN 13032-2 2004			Suspended					SHRNOM = 1.25		

C Range: 0 - 360DEG
 C Interval: 30.0DEG
 Test Speed: HIGH
 Temperature: 25.3 °C
 Operators:
 Test Date: 2025-02-18

γ Range: 0 - 180DEG
 γ Interval: 1.0DEG
 Test System: EVERFINE GO-2000B_V1 SYSTEM V2.00.488
 Humidity: 65.0%
 Test Distance: 6.360m [K=1.0000]
 Remarks:

ISOCANDELA DIAGRAM

Test:U:48.00V I:0.1029A P:4.939W PF:1.000 Freq:0Hz Lamp Flux:248.855x1 lm		
NAME: SF33-48V-2835-96-CC-3000K-80	TYPE:	WEIGHT:
SPEC.:	DIM.: Length=1m	SERIAL No.:
MFR.: OLympia lighting	SUR.:	Shielding Angle:

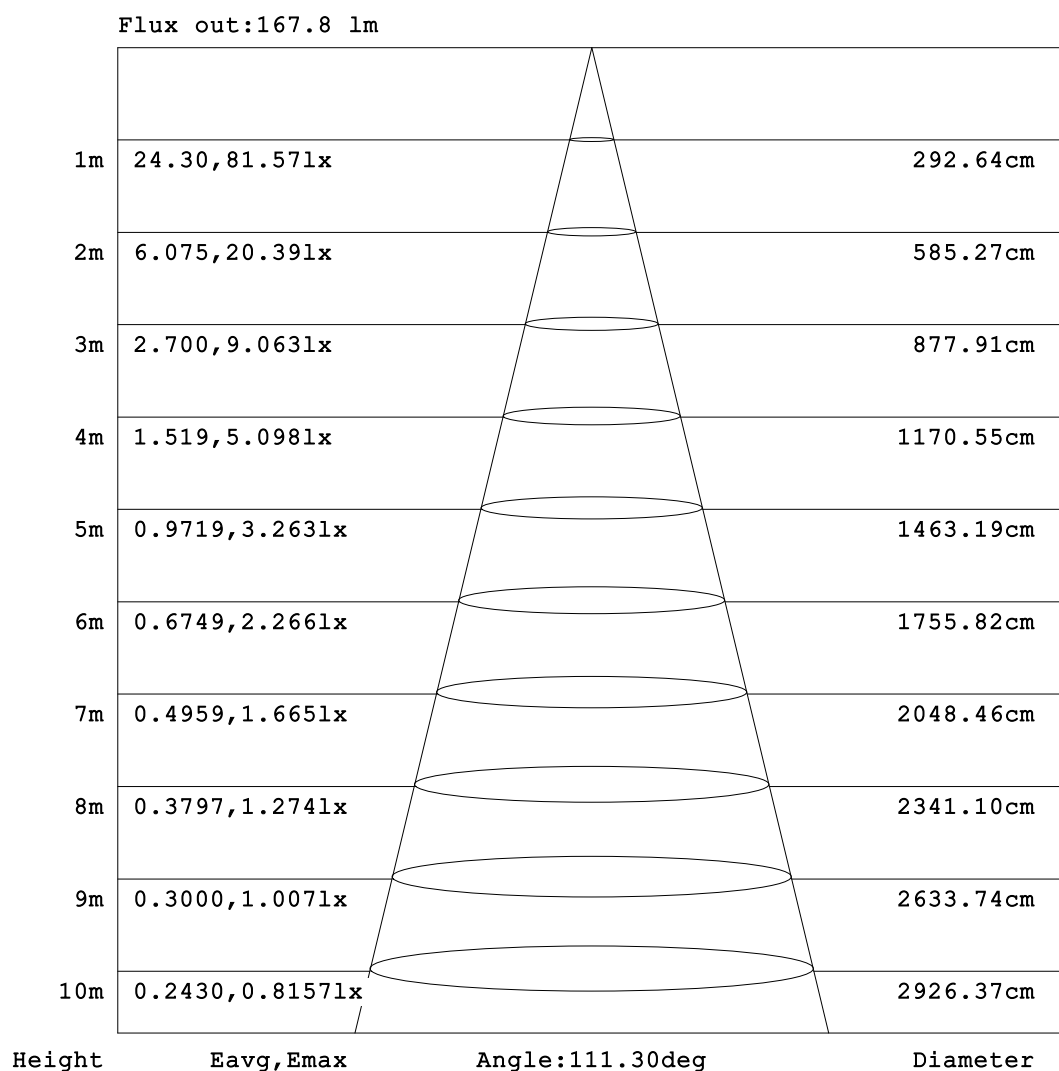


C Range: 0 - 360DEG
C Interval: 30.0DEG
Test Speed: HIGH
Temperature: 25.3°C
Operators:
Test Date: 2025-02-18

γ Range: 0 - 180DEG
γ Interval: 1.0DEG
Test System: EVERFINE GO-2000B_V1 SYSTEM V2.00.488
Humidity: 65.0%
Test Distance: 6.360m [K=1.0000]
Remarks:

AAI Figure

Test:U:48.00V I:0.1029A P:4.939W PF:1.000 Freq:0Hz Lamp Flux:248.855x1 lm		
NAME: SF33-48V-2835-96-CC-3000K-80	TYPE:	WEIGHT:
SPEC.:	DIM.: Length=1m	SERIAL No.:
MFR.: OLympia lighting	SUR.:	Shielding Angle:



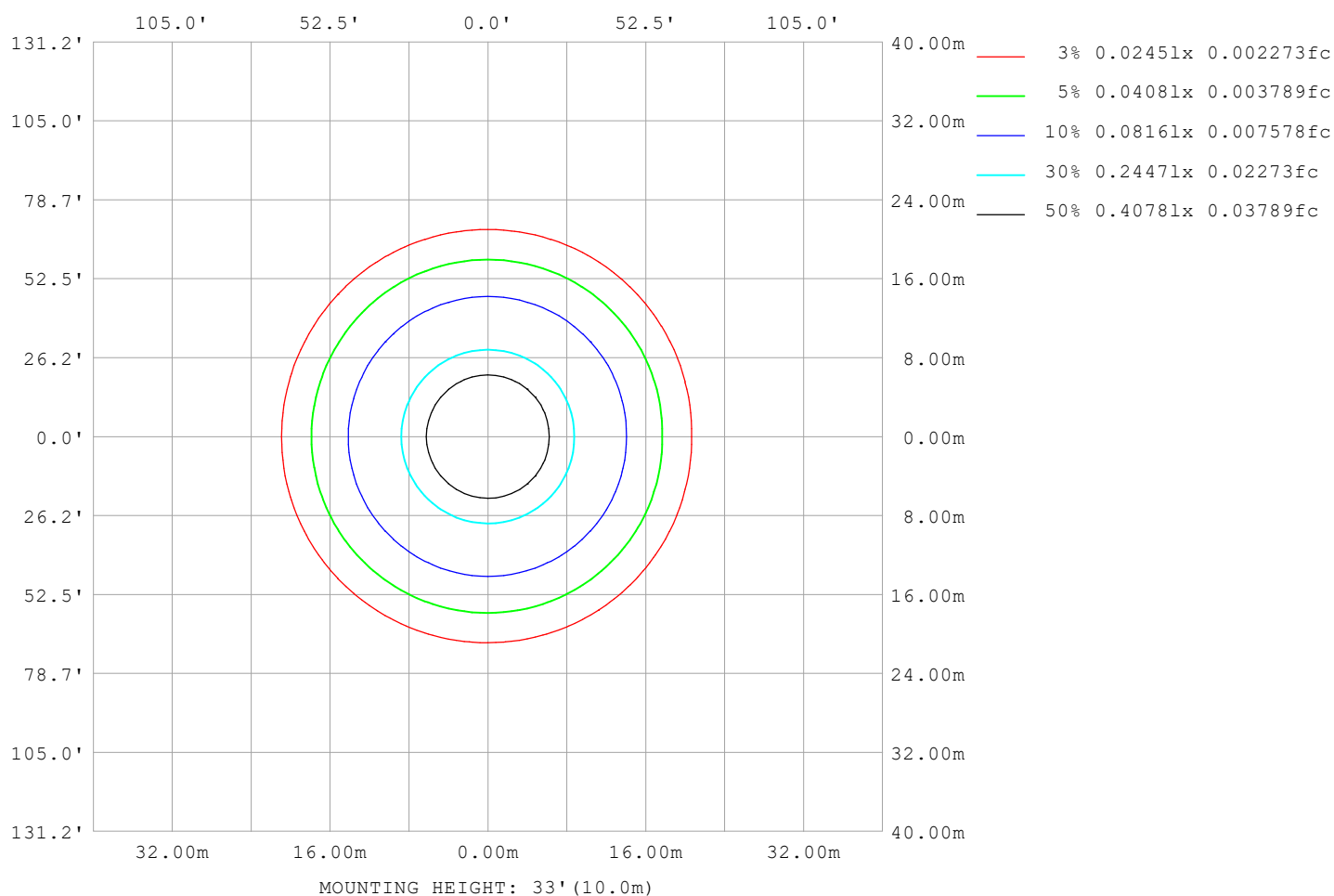
Note:The Curves indicate the illuminated area and the average illumination when the luminaire is at different distance.

C Range: 0 - 360DEG
C Interval: 30.0DEG
Test Speed: HIGH
Temperature:25.3℃
Operators:
Test Date:2025-02-18

γ Range: 0 - 180DEG
γ Interval: 1.0DEG
Test System:EVERFINE GO-2000B_V1 SYSTEM V2.00.488
Humidity:65.0%
Test Distance:6.360m [K=1.0000]
Remarks:

ISOLUX DIAGRAM

Test:U:48.00V I:0.1029A P:4.939W PF:1.000 Freq:0Hz Lamp Flux:248.855x1 lm		
NAME: SF33-48V-2835-96-CC-3000K-80	TYPE:	WEIGHT:
SPEC.:	DIM.: Length=1m	SERIAL No.:
MFR.: OLympia lighting	SUR.:	Shielding Angle:



C Range: 0 - 360DEG
C Interval: 30.0DEG
Test Speed: HIGH
Temperature: 25.3°C
Operators:
Test Date: 2025-02-18

γ Range: 0 - 180DEG
γ Interval: 1.0DEG
Test System: EVERFINE GO-2000B_V1 SYSTEM V2.00.488
Humidity: 65.0%
Test Distance: 6.360m [K=1.0000]
Remarks:

LED Avg.L Report

Test:U:48.00V I:0.1029A P:4.939W PF:1.000 Freq:0Hz Lamp Flux:248.855x1 lm		
NAME: SF33-48V-2835-96-CC-3000K-80	TYPE:	WEIGHT:
SPEC.:	DIM.: Length=1m	SERIAL No.:
MFR.: OLympia lighting	SUR.:	Shielding Angle:

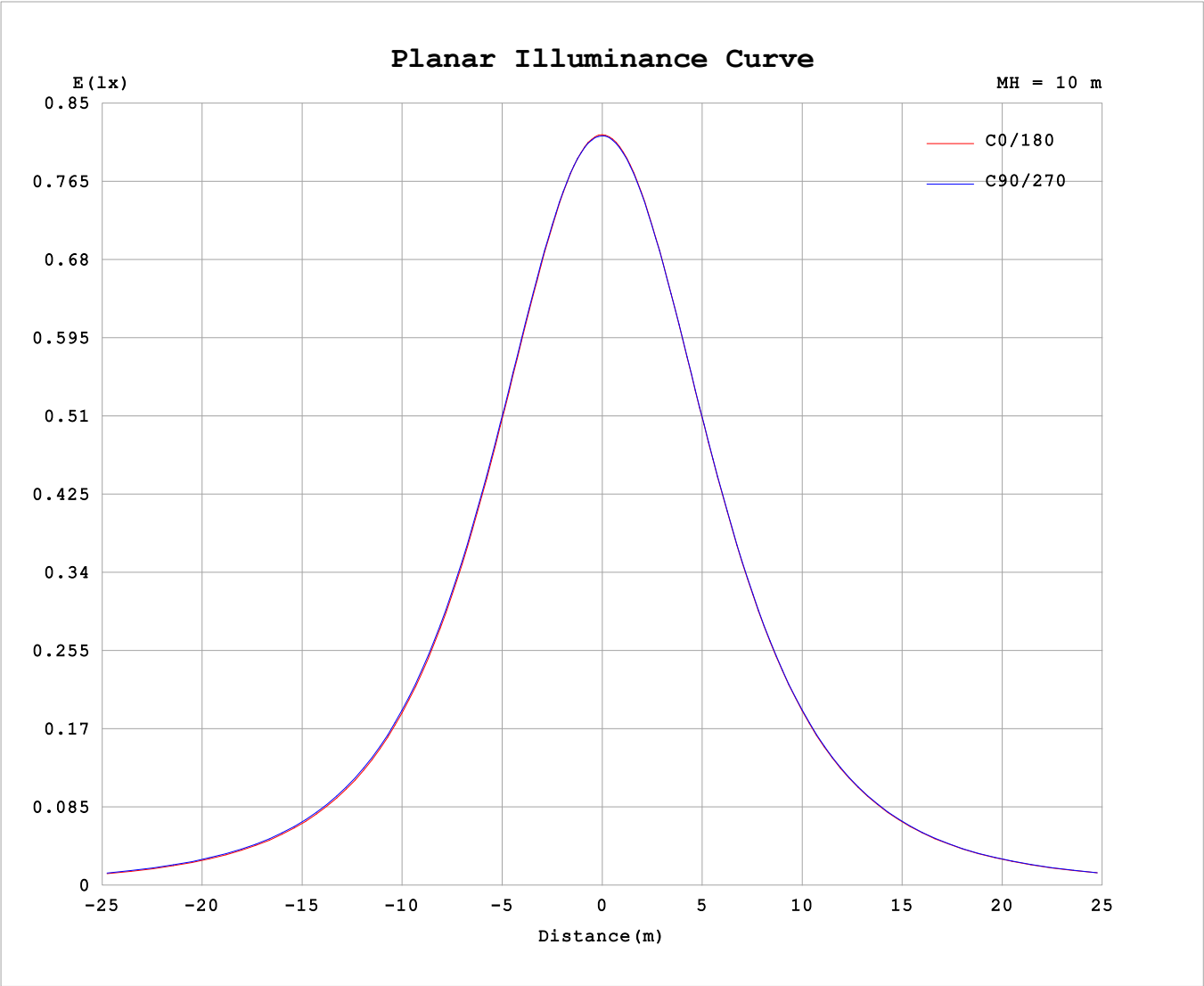
AvgL	cd/m2
L_0~180 (65) av	3124
L_0~180 (75) av	2933
L_0~180 (85) av	3143
L_90~270 (65) av	3215
L_90~270 (75) av	3089
L_90~270 (85) av	3290
L_45 (65) av	3199
L_45 (75) av	3073
L_45 (85) av	3407

Standard: GB/T 29293-2012

C Range: 0 - 360DEG
C Interval: 30.0DEG
Test Speed: HIGH
Temperature:25.3℃
Operators:
Test Date:2025-02-18

γ Range: 0 - 180DEG
γ Interval: 1.0DEG
Test System:EVERFINE GO-2000B_V1 SYSTEM V2.00.488
Humidity:65.0%
Test Distance:6.360m [K=1.0000]
Remarks:

Planar Illuminance Curve



C Range: 0 - 360DEG	γ Range: 0 - 180DEG
C Interval: 30.0DEG	γ Interval: 1.0DEG
Test Speed: HIGH	Test System:EVERFINE GO-2000B_V1 SYSTEM V2.00.488
Temperature:25.3℃	Humidity:65.0%
Operators:	Test Distance:6.360m [K=1.0000]
Test Date:2025-02-18	Remarks:

LUMINOUS DISTRIBUTION INTENSITY DATA

Test:U:48.00V I:0.1029A P:4.939W PF:1.000 Freq:0Hz Lamp Flux:248.855x1 lm											
NAME: SF33-48V-2835-96-CC-3000K-80						TYPE:			WEIGHT:		
SPEC.:						DIM.: Length=1m			SERIAL No.:		
MFR.: Olym pia lighting						SUR.:			Shielding Angle:		

Table--1

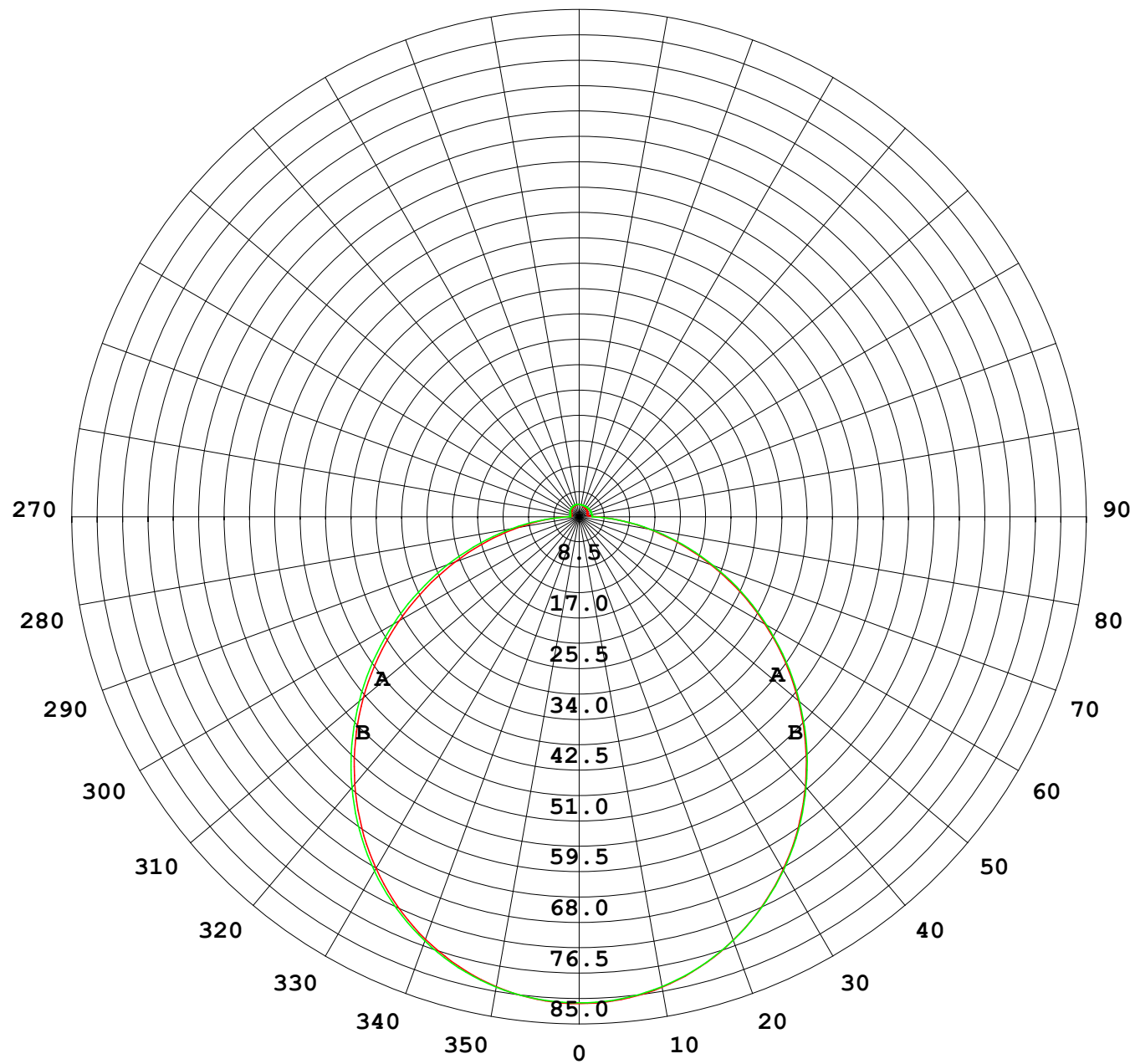
UNIT: cd

C (DEG) γ (DEG)	0	30	60	90	120	150	180	210	240	270	300	330							
0	81.5	81.5	81.5	81.5	81.5	81.5	81.5	81.5	81.5	81.5	81.5	81.5							
5	81.1	81.2	81.2	81.1	81.1	81.1	81.1	81.1	81.1	81.1	81.1	81.2							
10	79.9	80.1	80.1	80.1	80.0	79.9	80.0	79.9	79.9	80.0	80.1	80.1							
15	77.9	78.2	78.3	78.2	78.1	78.0	78.1	77.9	78.0	78.1	78.3	78.2							
20	75.3	75.6	75.7	75.7	75.5	75.4	75.4	75.3	75.4	75.6	75.7	75.6							
25	72.0	72.3	72.5	72.4	72.3	72.1	72.2	72.0	72.2	72.3	72.5	72.4							
30	68.0	68.5	68.6	68.6	68.4	68.2	68.3	68.2	68.3	68.5	68.7	68.5							
35	63.5	64.0	64.2	64.2	64.0	63.8	63.8	63.7	63.9	64.1	64.3	64.1							
40	58.5	59.0	59.3	59.3	59.1	58.9	58.9	58.8	59.1	59.2	59.4	59.1							
45	53.0	53.6	53.9	53.9	53.7	53.6	53.6	53.5	53.8	53.9	54.1	53.7							
50	47.2	47.8	48.2	48.1	48.1	47.9	47.9	47.9	48.2	48.3	48.4	48.0							
55	41.1	41.7	42.1	42.1	42.1	42.0	42.0	42.0	42.3	42.4	42.5	42.0							
60	34.8	35.4	35.9	36.0	36.0	36.0	36.0	35.9	36.3	36.3	36.3	35.7							
65	28.4	29.1	29.5	29.7	29.8	29.9	29.7	29.7	30.1	30.1	30.1	29.4							
70	22.0	22.8	23.2	23.4	23.6	23.8	23.5	23.6	24.0	24.0	23.9	23.2							
75	16.0	16.7	17.1	17.2	17.6	17.8	17.4	17.7	18.0	17.9	17.8	17.1							
80	10.2	11.0	11.3	11.4	11.8	12.2	11.8	12.0	12.3	12.2	12.0	11.3							
85	5.46	5.98	5.96	5.87	6.41	6.91	6.59	6.78	6.95	6.74	6.69	6.25							
90	2.07	2.39	2.11	1.55	2.71	3.53	3.11	3.29	3.01	2.23	2.67	2.55							
95	1.30	1.54	1.64	1.55	2.04	2.31	1.79	2.10	2.20	2.18	2.00	1.57							
100	1.32	1.56	1.64	1.56	1.96	2.07	1.44	1.85	2.13	2.18	2.00	1.56							
105	1.39	1.62	1.67	1.59	1.93	2.01	1.44	1.81	2.13	2.18	2.03	1.59							
110	1.46	1.68	1.72	1.64	1.91	2.01	1.46	1.80	2.13	2.19	2.04	1.64							
115	1.54	1.73	1.76	1.70	1.89	2.02	1.51	1.81	2.13	2.16	2.03	1.67							
120	1.61	1.79	1.81	1.78	1.88	2.05	1.57	1.84	2.12	2.15	2.02	1.71							
125	1.68	1.84	1.82	1.86	1.88	2.05	1.63	1.87	2.12	2.12	2.00	1.74							
130	1.74	1.86	1.88	1.93	1.88	2.05	1.69	1.89	2.10	2.10	1.98	1.76							
135	1.79	1.84	1.92	1.99	1.88	2.05	1.75	1.92	2.10	2.08	1.98	1.73							
140	1.84	1.88	1.95	2.02	1.90	2.00	1.78	1.94	2.10	2.06	1.97	1.72							
145	1.89	1.92	1.98	2.06	1.96	1.96	1.79	1.96	2.08	2.05	1.97	1.74							
150	1.93	1.95	2.00	2.09	2.03	1.94	1.79	1.96	2.06	2.04	1.97	1.76							
155	1.98	1.99	2.04	2.11	2.09	1.95	1.85	1.94	2.06	2.04	2.01	1.79							
160	2.01	2.03	2.08	2.14	2.13	2.02	1.95	1.96	2.07	2.04	2.02	1.82							
165	2.05	2.07	2.09	2.14	2.15	2.12	2.04	2.02	2.09	2.05	2.03	1.86							
170	2.08	2.11	2.10	2.14	2.16	2.14	2.07	2.06	2.10	2.06	2.05	2.01							
175	2.08	2.12	2.12	2.14	2.16	2.13	2.10	2.09	2.11	2.08	2.08	2.06							
180	2.10	2.12	2.13	2.14	2.14	2.13	2.10	2.11	2.13	2.13	2.14	2.11							

C Range: 0 - 360DEG
C Interval: 30.0DEG
Test Speed: HIGH
Temperature:25.3℃
Operators:
Test Date:2025-02-18

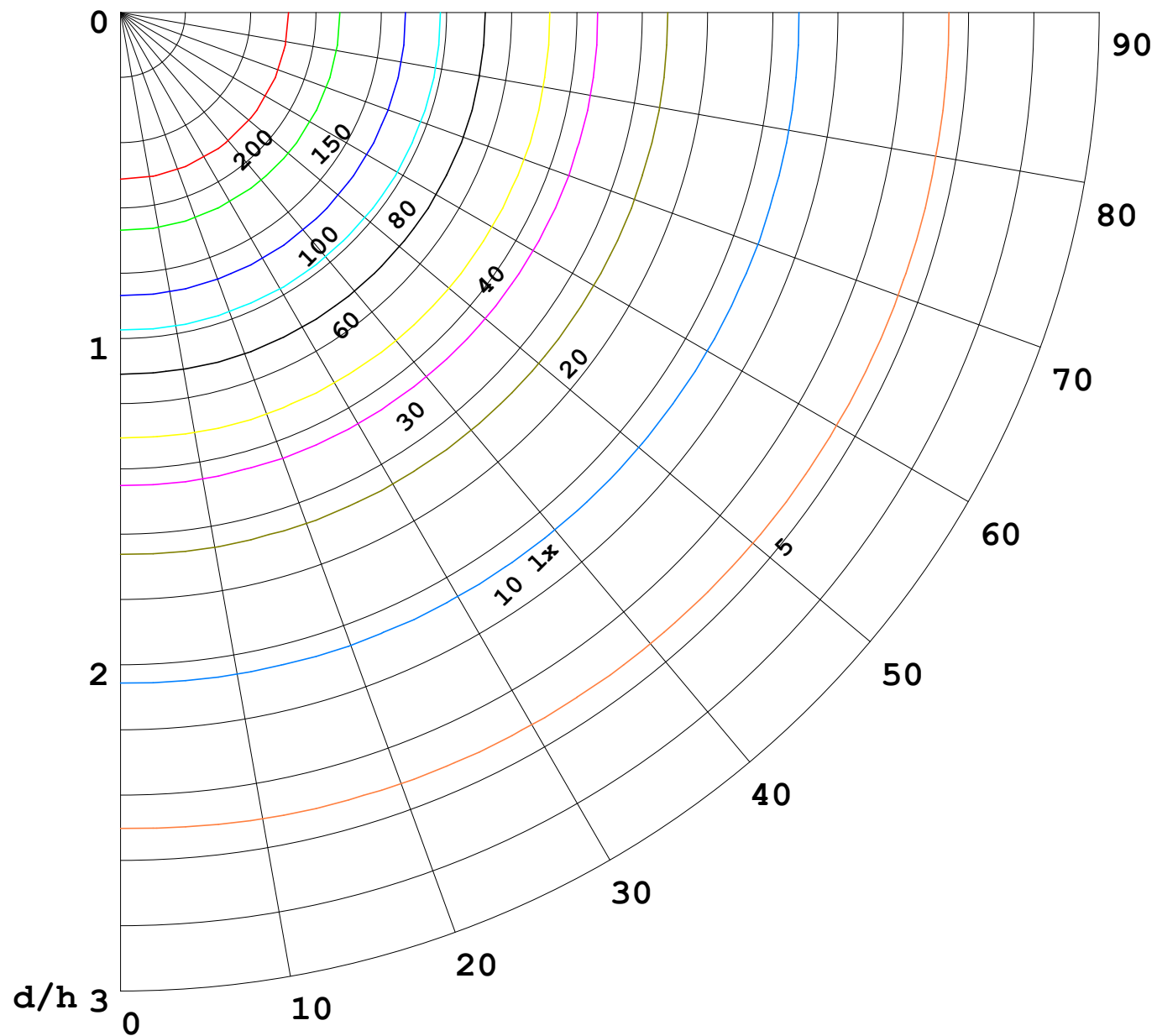
γ Range: 0 - 180DEG
γ Interval: 1.0DEG
Test System:EVERFINE GO-2000B_V1 SYSTEM V2.00.488
Humidity:65.0%
Test Distance:6.360m [K=1.0000]
Remarks:

I (cd)



1000 lm

$\kappa = 1$



	Pcc	Pw	Pfc
_____	70	50	30
_____	50	30	20

