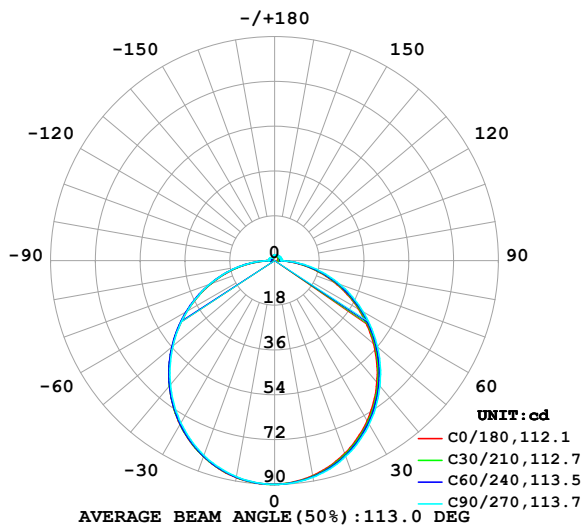


LUMINAIRE PHOTOMETRIC TEST REPORT

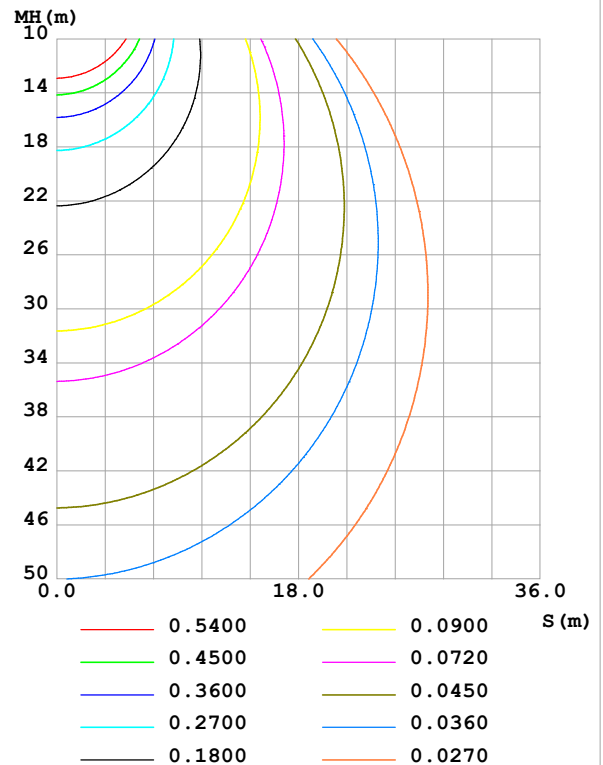
Test:U:48.00V I:0.1001A P:4.805W PF:1.000 Freq:0Hz Lamp Flux:277.961x1 lm		
NAME: SF33-48V-2835-96-CC-2200K-80	TYPE:	WEIGHT:
SPEC.:	DIM.: Length=1m	SERIAL No.:
MFR.: Olym pia lighting	SUR.:	Shielding Angle:

DATA OF LAMP		PHOTOMETRIC DATA				Eff: 57.85 lm/W
MODEL	2835	I _{max} (cd)	89.94	S/MH(C0/180)	1.26	
NOMINAL POWER(W)	5	LOR(%)	100.0	S/MH(C90/270)	1.25	
RATED VOLTAGE(V)	48	TOTAL FLUX(lm)	277.96	η UP,DN(C0-180)	2.5,47.8	
NOMINAL FLUX(lm)	277.961	CIE CLASS	DIRECT	η UP,DN(C180-360)	2.0,47.7	
LAMPS INSIDE	1	η up (%)	4.5	CIBSE SHR NOM	1.25	
TEST VOLTAGE(V)		η down (%)	95.5	CIBSE SHR MAX	1.35	

LUMINOUS INTENSITY DISTRIBUTION DIAGRAM



C0 PLANE ISOLUX DIAGRAM (UNIT:lx)



C Range: 0 - 360DEG
C Interval: 30.0DEG
Test Speed: HIGH
Temperature:25.3℃
Operators:
Test Date:2025-04-16

γ Range: 0 - 180DEG
γ Interval: 1.0DEG
Test System:EVERFINE GO-2000B_V1 SYSTEM V2.00.488
Humidity:65.0%
Test Distance:6.360m [K=1.0000]
Remarks:

ZONAL FLUX DIAGRAM

ZONAL FLUX DIAGRAM:

γ	C0	C45	C90	C135	C180	C225	C270	C315	γ	Φ zone	Φ total	%lum, lamp
10	87.81	88.16	88.47	88.63	88.56	88.44	88.22	88.00	0- 10	8.507	8.507	3.06,3.06
20	82.50	83.12	83.73	84.08	83.82	83.68	83.27	82.80	10- 20	24.33	32.84	11.8,11.8
30	74.40	75.19	76.04	76.52	76.09	75.96	75.38	74.78	20- 30	36.78	69.62	25,25
40	63.98	64.89	65.88	66.46	65.78	65.81	65.16	64.48	30- 40	44.24	113.9	41,41
50	51.94	52.90	53.97	54.61	53.64	53.89	53.36	52.56	40- 50	45.93	159.8	57.5,57.5
60	38.97	39.93	41.09	41.67	40.56	40.95	40.66	39.69	50- 60	42.04	201.8	72.6,72.6
70	25.65	26.58	27.86	28.31	27.22	27.66	27.68	26.45	60- 70	33.51	235.3	84.7,84.7
80	12.67	13.34	14.63	14.94	14.01	14.44	14.72	13.28	70- 80	21.71	257.1	92.5,92.5
90	2.534	2.693	2.602	2.904	2.359	2.423	2.475	2.483	80- 90	8.492	265.5	95.5,95.5
100	1.311	2.032	2.644	2.269	1.253	1.607	2.396	1.570	90-100	2.141	267.7	96.3,96.3
110	1.489	2.117	2.637	2.248	1.383	1.619	2.368	1.619	100-110	2.011	269.7	97,97
120	1.665	2.175	2.585	2.255	1.516	1.652	2.111	1.575	110-120	1.917	271.6	97.7,97.7
130	1.835	2.218	2.515	2.273	1.663	1.708	1.814	1.630	120-130	1.744	273.4	98.3,98.3
140	1.971	2.231	2.437	2.277	1.810	1.794	1.698	1.652	130-140	1.522	274.9	98.9,98.9
150	2.089	2.241	2.380	2.268	1.953	1.886	1.888	1.812	140-150	1.268	276.1	99.3,99.3
160	2.192	2.263	2.342	2.255	2.103	2.019	2.059	2.022	150-160	0.9731	277.1	99.7,99.7
170	2.279	2.297	2.326	2.259	2.247	2.195	2.206	2.201	160-170	0.6218	277.7	99.9,99.9
180	2.311	2.319	2.328	2.266	2.308	2.317	2.302	2.259	170-180	0.2164	278.0	100,100
DEG	LUMINOUS INTENSITY:cd									UNIT:lm		

Conical surface Flux(90deg): 136.97 lm

%lum = 49.3%

%lamp = 49.3%

Conical surface Flux(130deg): 219.89 lm

%lum = 79.1%

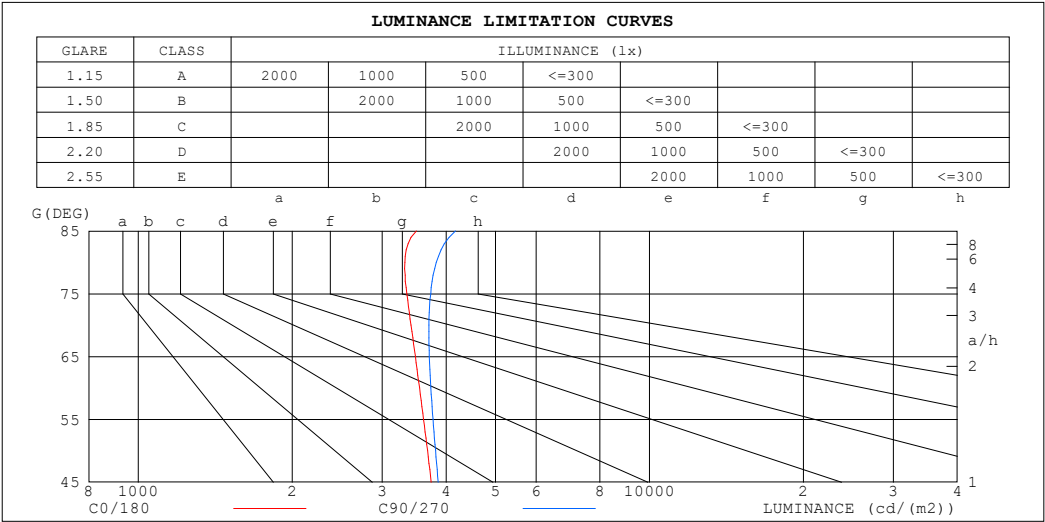
%lamp = 79.1%

C Range: 0 - 360DEG
 C Interval: 30.0DEG
 Test Speed: HIGH
 Temperature:25.3℃
 Operators:
 Test Date:2025-04-16

γ Range: 0 - 180DEG
 γ Interval: 1.0DEG
 Test System:EVERFINE GO-2000B_V1 SYSTEM V2.00.488
 Humidity:65.0%
 Test Distance:6.360m [K=1.0000]
 Remarks:

LUMINANCE LIMITATION CURVES

Test:U:48.00V I:0.1001A P:4.805W PF:1.000 Freq:0Hz Lamp Flux:277.961x1 lm		
NAME: SF33-48V-2835-96-CC-2200K-80	TYPE:	WEIGHT:
SPEC.:	DIM.: Length=1m	SERIAL No.:
MFR.: OLympia lighting	SUR.:	Shielding Angle:



LUMINANCE cd/(m2)		
G (DEG)	C0/180	C90/270
85	3499	4175
80	3322	3827
75	3352	3732
70	3415	3701
65	3483	3708
60	3549	3734
55	3613	3770
50	3680	3814
45	3742	3859

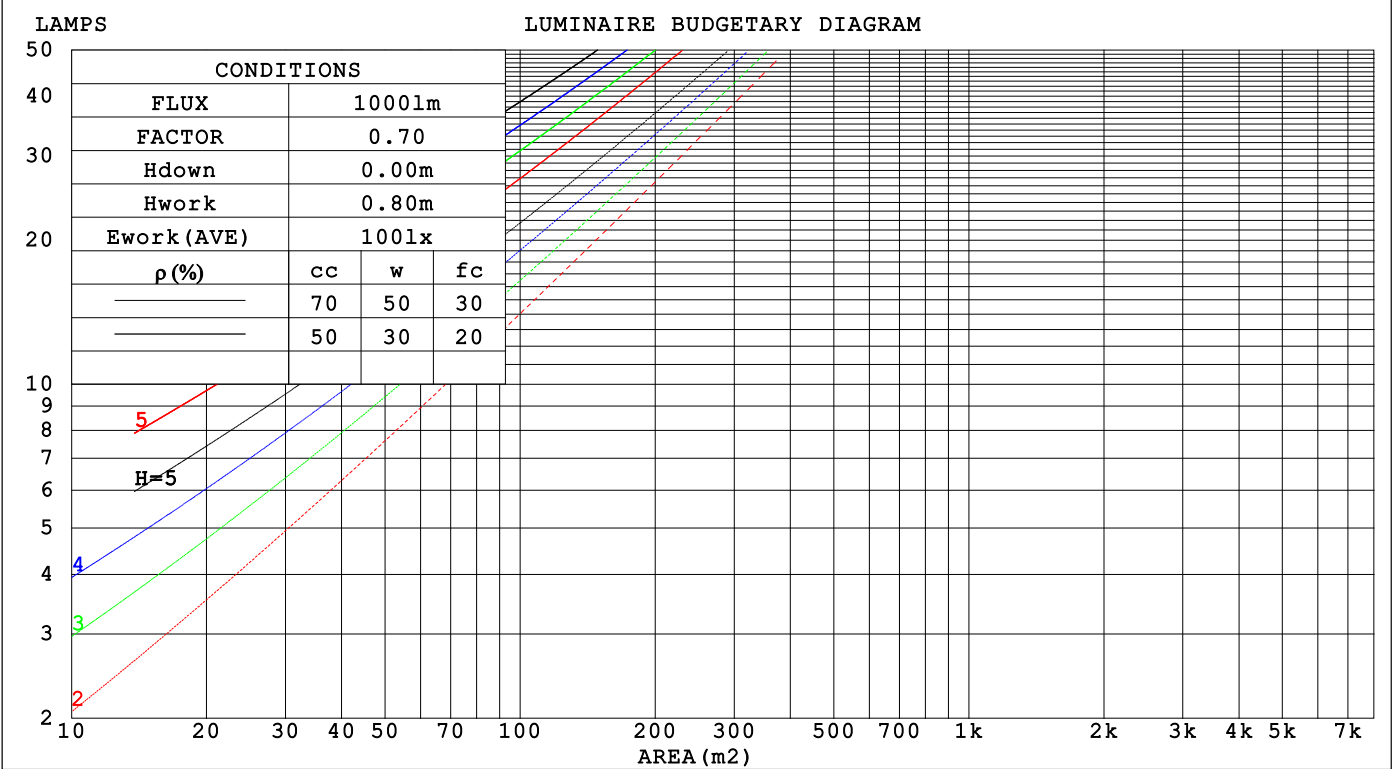
C Range: 0 - 360DEG
C Interval: 30.0DEG
Test Speed: HIGH
Temperature:25.3℃
Operators:
Test Date:2025-04-16

γ Range: 0 - 180DEG
γ Interval: 1.0DEG
Test System:EVERFINE GO-2000B_V1 SYSTEM V2.00.488
Humidity:65.0%
Test Distance:6.360m [K=1.0000]
Remarks:

CU AND LUMINAIRE BUDGETARY ESTIMATE DIAGRAM

Test:U:48.00V I:0.1001A P:4.805W PF:1.000 Freq:0Hz		
Lamp Flux:277.961x1 lm		
NAME: SF33-48V-2835-96-CC-2200K-80	TYPE:	WEIGHT:
SPEC.:	DIM.: Length=1m	SERIAL No.:
MFR.: OLYMPIA lighting	SUR.:	Shielding Angle:

pcc	80%			70%			50%			30%			10%			0
pw	50%	30%	10%	50%	30%	10%	50%	30%	10%	50%	30%	10%	50%	30%	10%	0
pfc	20%			20%			20%			20%			20%			0
RCR	RCR:Room Cavity Ratio															



C Range: 0 - 360DEG

C Interval: 30.0DEG

Test Speed: HIGH

Temperature:25.3℃

Operators:

Test Date:2025-04-16

γ Range: 0 - 180DEG

γ Interval: 1.0DEG

Test System:EVERFINE GO-2000B_V1 SYSTEM V2.00.488

Humidity:65.0%

Test Distance:6.360m [K=1.0000]

Remarks:

WEC AND CCEC

Test:U:48.00V I:0.1001A P:4.805W PF:1.000 Freq:0Hz Lamp Flux:277.961x1 lm		
NAME: SF33-48V-2835-96-CC-2200K-80	TYPE:	WEIGHT:
SPEC.:	DIM.: Length=1m	SERIAL No.:
MFR.: OLympia lighting	SUR.:	Shielding Angle:

pcc	80%			70%			50%			30%			10%			0														
pw	50%	30%	10%	50%	30%	10%	50%	30%	10%	50%	30%	10%	50%	30%	10%	0														
pfc	20%			20%			20%			20%			20%			0														
RCR	RCR:Room Cavity Ratio															Wall Exitance Coefficients(WEC)														
0.0																														
1.0	.327	.186	.059	.318	.182	.058	.302	.173	.055	.288	.166	.053	.274	.159	.051															
2.0	.301	.165	.051	.294	.162	.050	.280	.155	.048	.266	.149	.047	.254	.144	.045															
3.0	.276	.147	.044	.269	.144	.043	.257	.139	.042	.245	.134	.041	.234	.130	.040															
4.0	.253	.131	.039	.247	.129	.038	.236	.125	.037	.225	.121	.036	.216	.117	.036															
5.0	.233	.119	.034	.228	.117	.034	.217	.113	.033	.208	.110	.033	.199	.106	.032															
6.0	.215	.108	.031	.211	.106	.031	.201	.103	.030	.193	.100	.029	.185	.097	.029															
7.0	.200	.099	.028	.196	.097	.028	.187	.095	.027	.180	.092	.027	.173	.090	.026															
8.0	.186	.091	.026	.183	.090	.025	.175	.087	.025	.168	.085	.025	.162	.083	.024															
9.0	.174	.084	.024	.171	.083	.023	.164	.081	.023	.158	.079	.023	.152	.077	.022															
10.0	.164	.079	.022	.161	.078	.022	.155	.076	.021	.149	.074	.021	.143	.072	.021															

pcc	80%			70%			50%			30%			10%			0
pw	50%	30%	10%	50%	30%	10%	50%	30%	10%	50%	30%	10%	50%	30%	10%	0
pfc	20%			20%			20%			20%			20%			0
RCR	RCR:Room Cavity Ratio						Ceiling Cavity Exitance Coefficients (CCEC)									
0.0	.225	.225	.225	.192	.192	.192	.131	.131	.131	.075	.075	.075	.024	.024	.024	
1.0	.216	.190	.167	.185	.163	.144	.126	.112	.100	.073	.065	.058	.023	.021	.019	
2.0	.208	.166	.131	.178	.143	.114	.122	.099	.079	.070	.058	.046	.023	.019	.015	
3.0	.200	.149	.108	.172	.129	.094	.118	.089	.066	.068	.052	.039	.022	.017	.013	
4.0	.193	.136	.093	.165	.117	.080	.114	.082	.057	.066	.048	.034	.021	.016	.011	
5.0	.185	.126	.082	.159	.109	.071	.110	.076	.050	.063	.045	.030	.020	.015	.010	
6.0	.178	.117	.074	.153	.102	.064	.106	.071	.046	.061	.042	.027	.020	.014	.009	
7.0	.171	.111	.068	.147	.096	.059	.102	.067	.042	.059	.040	.025	.019	.013	.008	
8.0	.165	.105	.064	.142	.091	.056	.098	.064	.040	.057	.038	.024	.018	.012	.008	
9.0	.158	.100	.060	.136	.087	.053	.095	.061	.037	.055	.036	.022	.018	.012	.007	
10.0	.153	.096	.058	.132	.083	.050	.091	.058	.036	.053	.035	.021	.017	.011	.007	

C Range: 0 - 360DEG
C Interval: 30.0DEG
Test Speed: HIGH
Temperature:25.3℃
Operators:
Test Date:2025-04-16

γ Range: 0 - 180DEG
γ Interval: 1.0DEG
Test System:EVERFINE GO-2000B_V1 SYSTEM V2.00.488
Humidity:65.0%
Test Distance:6.360m [K=1.0000]
Remarks:

UGR(Unified Glare Rating) Table

Test:U:48.00V I:0.1001A P:4.805W PF:1.000 Freq:0Hz Lamp Flux:277.961x1 lm										
NAME: SF33-48V-2835-96-CC-2200K-80					TYPE:			WEIGHT:		
SPEC.:					DIM.: Length=1m			SERIAL No.:		
MFR.: OLympia lighting					SUR.:			Shielding Angle:		
ceiling/cavity	0.7	0.7	0.5	0.5	0.3	0.7	0.7	0.5	0.5	0.3
walls	0.5	0.3	0.5	0.3	0.3	0.5	0.3	0.5	0.3	0.3
working plane	0.2	0.2	0.2	0.2	0.2	0.2	0.2	0.2	0.2	0.2
Room dimensions	Viewed crosswise					Viewed endwise				
x = 2H y = 2H	21.4	22.9	21.8	23.2	23.5	21.6	23.1	22.0	23.4	23.7
3H	23.1	24.4	23.4	24.8	25.1	23.3	24.7	23.7	25.0	25.4
4H	23.8	25.1	24.2	25.4	25.8	24.1	25.4	24.5	25.8	26.1
6H	24.4	25.6	24.8	25.9	26.3	24.8	26.0	25.2	26.4	26.7
8H	24.6	25.8	25.0	26.1	26.5	25.1	26.2	25.5	26.6	27.0
12H	24.8	25.9	25.2	26.3	26.7	25.3	26.4	25.7	26.8	27.2
4H 2H	22.1	23.4	22.5	23.7	24.1	22.2	23.5	22.6	23.9	24.2
3H	23.9	25.1	24.3	25.4	25.8	24.2	25.3	24.6	25.7	26.1
4H	24.8	25.8	25.2	26.2	26.6	25.1	26.1	25.5	26.5	26.9
6H	25.5	26.4	26.0	26.9	27.3	25.9	26.8	26.3	27.2	27.7
8H	25.8	26.7	26.3	27.1	27.6	26.2	27.1	26.7	27.5	28.0
12H	26.0	26.8	26.5	27.3	27.8	26.5	27.3	27.0	27.8	28.3
8H 4H	25.1	26.0	25.6	26.4	26.9	25.4	26.2	25.9	26.7	27.2
6H	26.0	26.7	26.5	27.2	27.8	26.4	27.1	26.9	27.6	28.1
8H	26.4	27.1	27.0	27.6	28.1	26.8	27.5	27.3	28.0	28.5
12H	26.8	27.3	27.3	27.9	28.4	27.2	27.8	27.8	28.3	28.9
12H 4H	25.2	25.9	25.6	26.4	26.9	25.4	26.2	25.9	26.7	27.2
6H	26.1	26.8	26.7	27.3	27.8	26.4	27.1	27.0	27.6	28.1
8H	26.6	27.1	27.1	27.7	28.2	27.0	27.5	27.5	28.0	28.6
Variations with the observer position at spacings(CIE Pub.117):										
S = 1.0H	+ 0.1 / - 0.2					+ 0.1 / - 0.2				
1.5H	+ 0.2 / - 0.3					+ 0.2 / - 0.3				
2.0H	+ 0.1 / - 0.3					+ 0.1 / - 0.3				

CIE Pub.117, 278.0 lm Total Lamp Luminous Flux Correct (8log(F/F0) = -4.4)
Area: 0.022 m2

C Range: 0 - 360DEG
C Interval: 30.0DEG
Test Speed: HIGH
Temperature:25.3℃
Operators:
Test Date:2025-04-16

γ Range: 0 - 180DEG
γ Interval: 1.0DEG
Test System:EVERFINE GO-2000B_V1 SYSTEM V2.00.488
Humidity:65.0%
Test Distance:6.360m [K=1.0000]
Remarks:

UTILIZATION FACTORS TABLE

Test:U:48.00V I:0.1001A P:4.805W PF:1.000 Freq:0Hz Lamp Flux:277.961x1 lm		
NAME: SF33-48V-2835-96-CC-2200K-80	TYPE:	WEIGHT:
SPEC.:	DIM.: Length=1m	SERIAL No.:
MFR.: OLympia lighting	SUR.:	Shielding Angle:

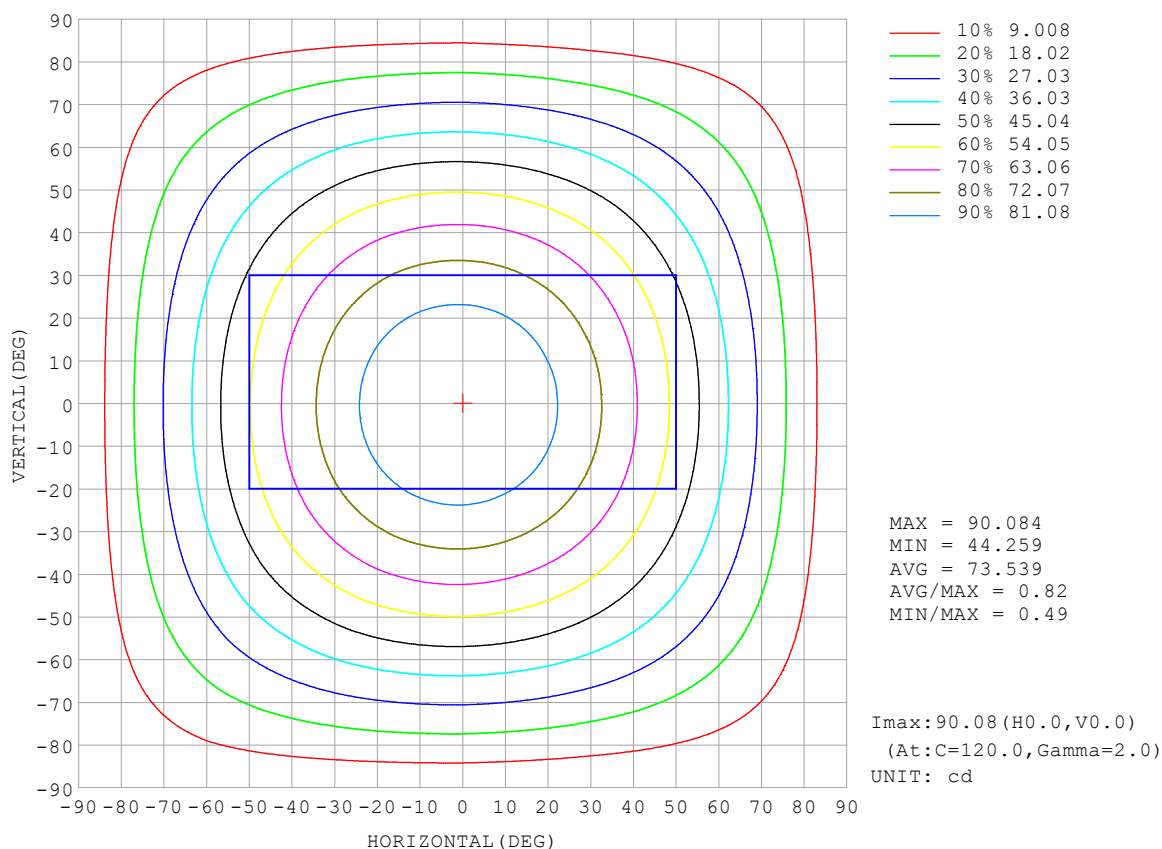
REFLECTANCE										
Ceiling	0.8	0.8	0.8	0.7	0.7	0.7	0.5	0.5	0.5	0
Walls	0.7	0.5	0.3	0.7	0.5	0.3	0.7	0.5	0.3	0
Working plane	0.2	0.2	0.2	0.2	0.2	0.2	0.2	0.2	0.2	0
ROOM INDEX	UTILIZATION FACTORS (PERCENT) $k(RI) \times RCR = 5$									
$k = 0.60$	55	44	37	55	43	36	53	43	36	30
0.80	65	53	46	64	53	46	62	52	45	38
1.00	73	62	54	72	61	54	69	62	53	46
1.25	80	70	62	79	69	62	76	67	60	52
1.50	85	75	68	84	74	67	80	72	66	57
2.00	92	83	76	90	82	76	86	79	74	65
2.50	96	88	82	94	87	81	90	83	78	69
3.00	100	93	87	97	91	85	93	87	83	73
4.00	104	98	93	101	96	91	96	92	88	78
5.00	107	101	97	104	99	95	98	95	91	81
ROOM INDEX	UF (total)									Direct
According to DIN EN 13032-2 2004			Suspended					SHRNOM = 1.25		

C Range: 0 - 360DEG
 C Interval: 30.0DEG
 Test Speed: HIGH
 Temperature: 25.3 °C
 Operators:
 Test Date: 2025-04-16

γ Range: 0 - 180DEG
 γ Interval: 1.0DEG
 Test System: EVERFINE GO-2000B_V1 SYSTEM V2.00.488
 Humidity: 65.0%
 Test Distance: 6.360m [K=1.0000]
 Remarks:

ISOCANDELA DIAGRAM

Test:U:48.00V I:0.1001A P:4.805W PF:1.000 Freq:0Hz Lamp Flux:277.961x1 lm		
NAME: SF33-48V-2835-96-CC-2200K-80	TYPE:	WEIGHT:
SPEC.:	DIM.: Length=1m	SERIAL No.:
MFR.: OLympia lighting	SUR.:	Shielding Angle:

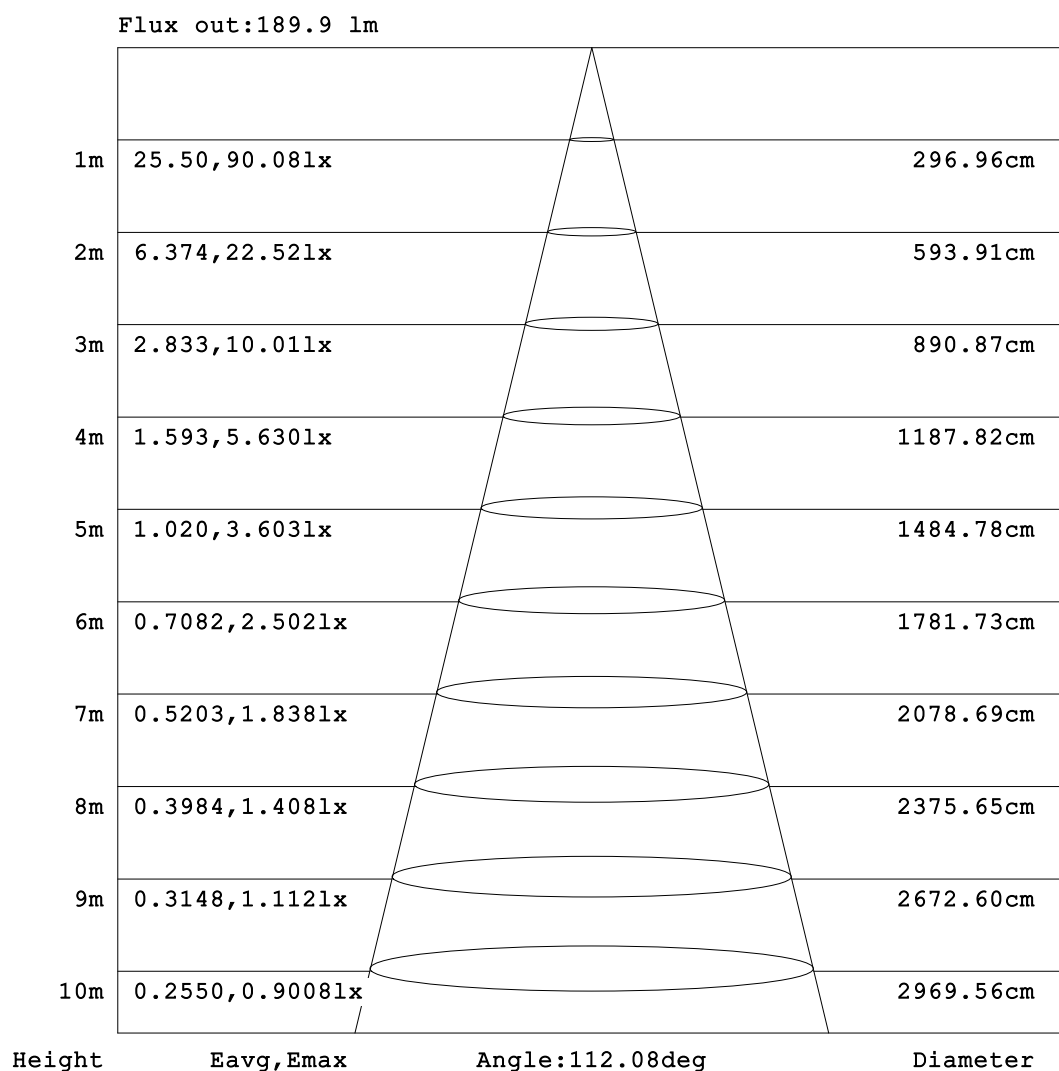


C Range: 0 - 360DEG
C Interval: 30.0DEG
Test Speed: HIGH
Temperature:25.3℃
Operators:
Test Date:2025-04-16

γ Range: 0 - 180DEG
γ Interval: 1.0DEG
Test System:EVERFINE GO-2000B_V1 SYSTEM V2.00.488
Humidity:65.0%
Test Distance:6.360m [K=1.0000]
Remarks:

AAI Figure

Test:U:48.00V I:0.1001A P:4.805W PF:1.000 Freq:0Hz Lamp Flux:277.96lx1 lm		
NAME: SF33-48V-2835-96-CC-2200K-80	TYPE:	WEIGHT:
SPEC.:	DIM.: Length=1m	SERIAL No.:
MFR.: OLympia lighting	SUR.:	Shielding Angle:



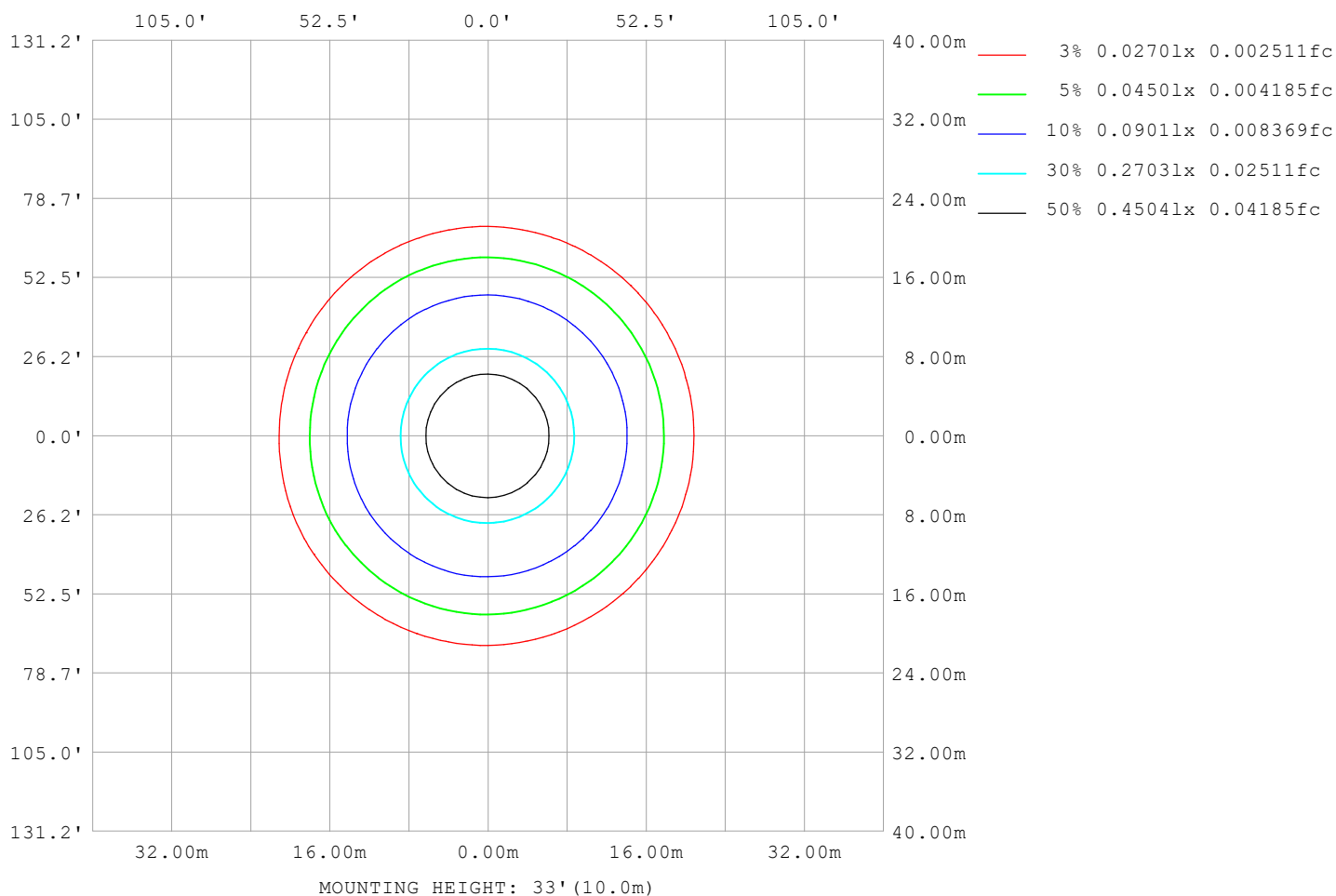
Note:The Curves indicate the illuminated area and the average illumination when the luminaire is at different distance.

C Range: 0 - 360DEG
C Interval: 30.0DEG
Test Speed: HIGH
Temperature:25.3℃
Operators:
Test Date:2025-04-16

γ Range: 0 - 180DEG
γ Interval: 1.0DEG
Test System:EVERFINE GO-2000B_V1 SYSTEM V2.00.488
Humidity:65.0%
Test Distance:6.360m [K=1.0000]
Remarks:

ISOLUX DIAGRAM

Test:U:48.00V I:0.1001A P:4.805W PF:1.000 Freq:0Hz Lamp Flux:277.96lx 1m		
NAME: SF33-48V-2835-96-CC-2200K-80	TYPE:	WEIGHT:
SPEC.:	DIM.: Length=1m	SERIAL No.:
MFR.: OLympia lighting	SUR.:	Shielding Angle:



C Range: 0 - 360DEG
C Interval: 30.0DEG
Test Speed: HIGH
Temperature: 25.3°C
Operators:
Test Date: 2025-04-16

γ Range: 0 - 180DEG
γ Interval: 1.0DEG
Test System: EVERFINE GO-2000B_V1 SYSTEM V2.00.488
Humidity: 65.0%
Test Distance: 6.360m [K=1.0000]
Remarks:

LED Avg.L Report

Test:U:48.00V I:0.1001A P:4.805W PF:1.000 Freq:0Hz Lamp Flux:277.961x1 lm		
NAME: SF33-48V-2835-96-CC-2200K-80	TYPE:	WEIGHT:
SPEC.:	DIM.: Length=1m	SERIAL No.:
MFR.: OLympia lighting	SUR.:	Shielding Angle:

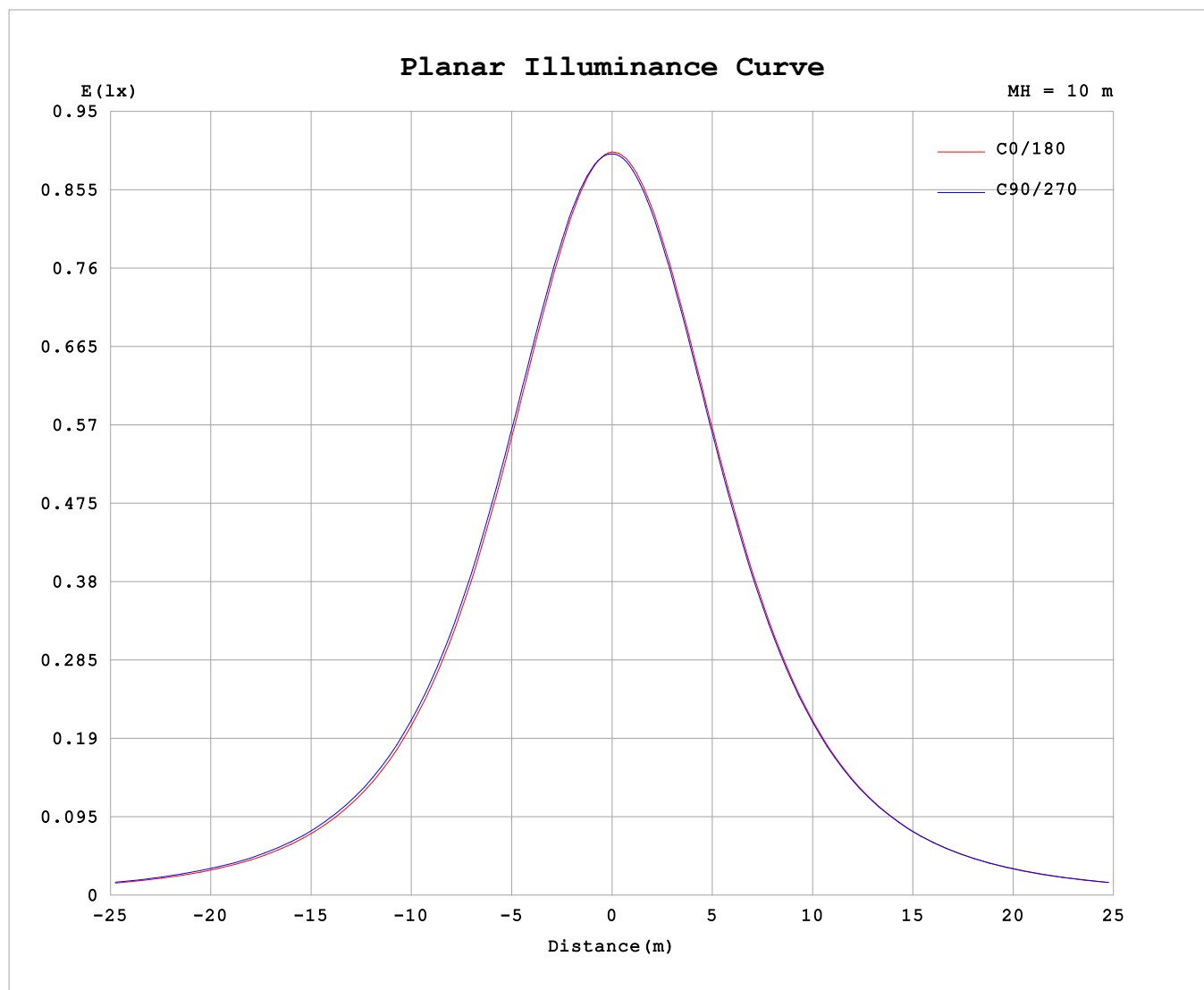
AvgL	cd/m2
L_0~180 (65) av	3561
L_0~180 (75) av	3481
L_0~180 (85) av	3703
L_90~270 (65) av	3693
L_90~270 (75) av	3729
L_90~270 (85) av	4231
L_45 (65) av	3652
L_45 (75) av	3619
L_45 (85) av	3962

Standard: GB/T 29293-2012

C Range: 0 - 360DEG
C Interval: 30.0DEG
Test Speed: HIGH
Temperature:25.3℃
Operators:
Test Date:2025-04-16

γ Range: 0 - 180DEG
γ Interval: 1.0DEG
Test System:EVERFINE GO-2000B_V1 SYSTEM V2.00.488
Humidity:65.0%
Test Distance:6.360m [K=1.0000]
Remarks:

Planar Illuminance Curve



C Range: 0 - 360DEG
C Interval: 30.0DEG
Test Speed: HIGH
Temperature: 25.3 °C
Operators:
Test Date: 2025-04-16

γ Range: 0 - 180DEG
 γ Interval: 1.0DEG
Test System: EVERFINE GO-2000B_V1 SYSTEM V2.00.488
Humidity: 65.0%
Test Distance: 6.360m [K=1.0000]
Remarks:

LUMINOUS DISTRIBUTION INTENSITY DATA

Test:U:48.00V I:0.1001A P:4.805W PF:1.000 Freq:0Hz Lamp Flux:277.96lx1 lm											
NAME: SF33-48V-2835-96-CC-2200K-80						TYPE:				WEIGHT:	
SPEC.:						DIM.: Length=1m				SERIAL No.:	
MFR.: Olym pia lighting						SUR.:				Shielding Angle:	

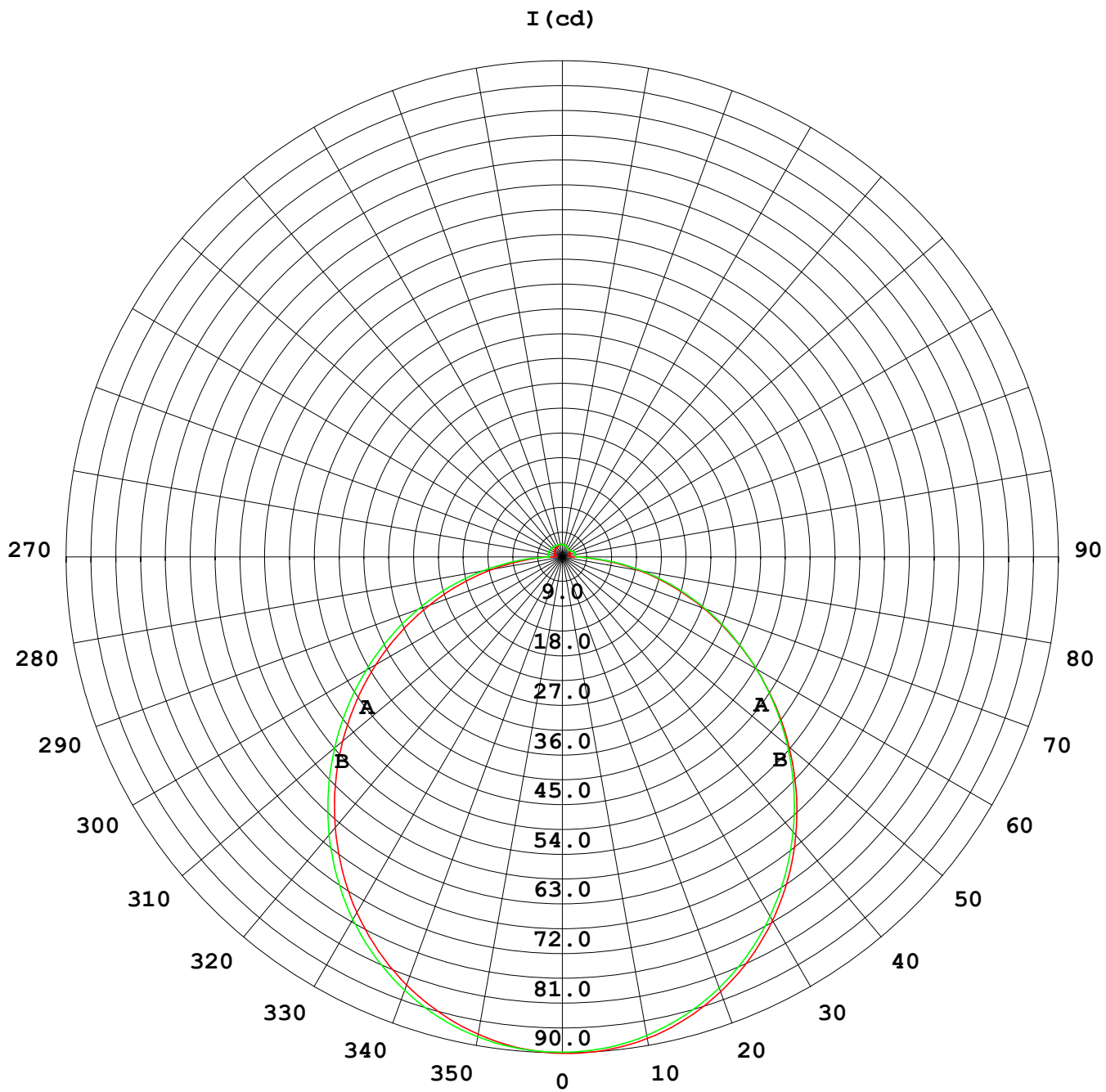
Table--1

UNIT: cd

C (DEG) γ (DEG)	0	30	60	90	120	150	180	210	240	270	300	330							
0	89.9	89.9	89.9	89.9	89.9	89.9	89.9	89.9	89.9	89.9	89.9	89.9							
5	89.3	89.4	89.5	89.6	89.7	89.7	89.7	89.6	89.6	89.5	89.4	89.3							
10	87.8	88.1	88.2	88.5	88.6	88.6	88.6	88.5	88.4	88.2	88.1	87.9							
15	85.5	85.9	86.2	86.5	86.7	86.8	86.6	86.5	86.4	86.1	85.9	85.6							
20	82.5	82.9	83.3	83.7	84.1	84.1	83.8	83.8	83.6	83.3	83.0	82.6							
25	78.8	79.2	79.7	80.2	80.6	80.7	80.3	80.2	80.1	79.7	79.3	78.9							
30	74.4	75.0	75.4	76.0	76.5	76.5	76.1	76.0	75.9	75.4	75.0	74.6							
35	69.4	70.1	70.5	71.2	71.7	71.8	71.2	71.2	71.1	70.5	70.1	69.7							
40	64.0	64.6	65.2	65.9	66.4	66.5	65.8	65.8	65.8	65.2	64.7	64.2							
45	58.1	58.8	59.4	60.1	60.7	60.7	59.9	60.0	60.0	59.4	58.9	58.4							
50	51.9	52.6	53.2	54.0	54.6	54.6	53.6	53.8	54.0	53.4	52.9	52.3							
55	45.5	46.1	46.8	47.6	48.2	48.2	47.2	47.4	47.6	47.1	46.5	45.9							
60	39.0	39.6	40.3	41.1	41.7	41.7	40.6	40.8	41.1	40.7	40.0	39.3							
65	32.3	32.9	33.6	34.5	35.0	35.1	33.9	34.1	34.5	34.2	33.5	32.7							
70	25.7	26.2	26.9	27.9	28.3	28.4	27.2	27.5	27.8	27.7	26.8	26.1							
75	19.1	19.6	20.3	21.3	21.6	21.7	20.6	20.8	21.2	21.2	20.2	19.4							
80	12.7	13.1	13.6	14.6	14.8	15.0	14.0	14.3	14.6	14.7	13.6	12.9							
85	6.70	7.04	7.25	8.01	8.14	8.42	7.50	7.73	8.04	8.22	7.29	6.86							
90	2.53	2.71	2.67	2.60	2.69	3.12	2.36	2.45	2.39	2.48	2.50	2.47							
95	1.26	1.66	2.30	2.63	2.40	2.25	1.28	1.48	1.80	2.42	1.87	1.29							
100	1.31	1.72	2.34	2.64	2.40	2.13	1.25	1.43	1.78	2.40	1.83	1.31							
105	1.40	1.78	2.37	2.64	2.41	2.08	1.31	1.45	1.78	2.39	1.83	1.37							
110	1.49	1.84	2.39	2.64	2.42	2.08	1.38	1.49	1.75	2.37	1.81	1.43							
115	1.58	1.90	2.40	2.62	2.42	2.08	1.44	1.52	1.74	2.27	1.72	1.46							
120	1.67	1.96	2.39	2.58	2.42	2.09	1.52	1.56	1.74	2.11	1.65	1.50							
125	1.75	2.00	2.39	2.55	2.42	2.11	1.58	1.61	1.74	1.95	1.60	1.61							
130	1.84	2.04	2.39	2.52	2.42	2.13	1.66	1.68	1.74	1.81	1.59	1.67							
135	1.91	2.08	2.37	2.48	2.41	2.15	1.73	1.75	1.76	1.73	1.61	1.59							
140	1.97	2.11	2.36	2.44	2.40	2.16	1.81	1.77	1.81	1.70	1.68	1.63							
145	2.03	2.13	2.34	2.41	2.38	2.16	1.88	1.79	1.88	1.75	1.76	1.71							
150	2.09	2.15	2.33	2.38	2.37	2.16	1.95	1.83	1.94	1.89	1.83	1.79							
155	2.14	2.18	2.32	2.36	2.35	2.17	2.02	1.91	1.99	1.98	2.00	1.87							
160	2.19	2.22	2.31	2.34	2.34	2.17	2.10	1.99	2.05	2.06	2.09	1.95							
165	2.24	2.26	2.30	2.32	2.32	2.19	2.18	2.08	2.13	2.15	2.16	2.03							
170	2.28	2.29	2.30	2.33	2.30	2.21	2.25	2.19	2.20	2.21	2.22	2.19							
175	2.30	2.31	2.31	2.33	2.29	2.25	2.29	2.26	2.28	2.24	2.26	2.22							
180	2.31	2.31	2.32	2.33	2.27	2.26	2.31	2.31	2.32	2.30	2.27	2.25							

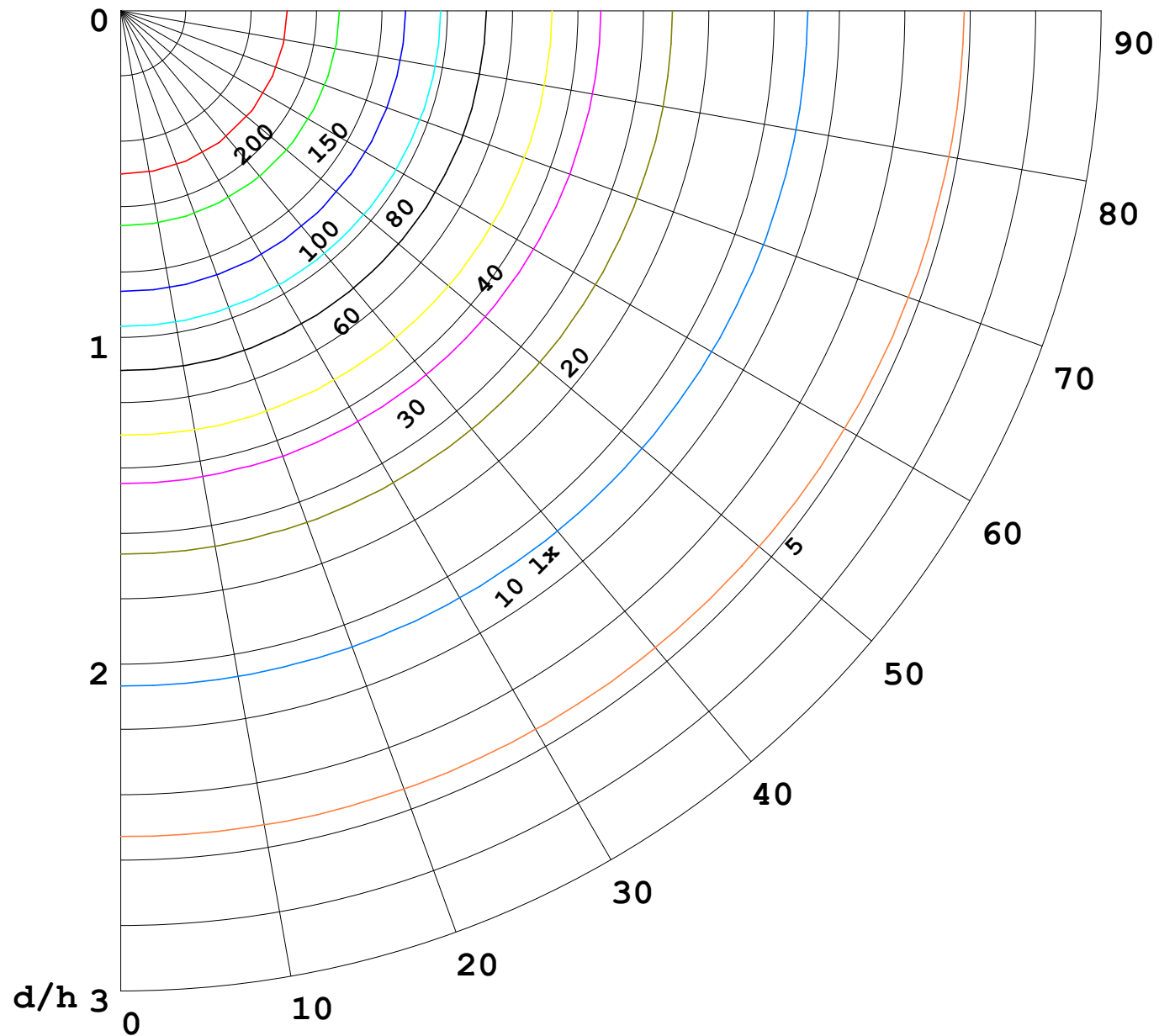
C Range: 0 - 360DEG
C Interval: 30.0DEG
Test Speed: HIGH
Temperature:25.3℃
Operators:
Test Date:2025-04-16

γ Range: 0 - 180DEG
γ Interval: 1.0DEG
Test System:EVERFINE GO-2000B_V1 SYSTEM V2.00.488
Humidity:65.0%
Test Distance:6.360m [K=1.0000]
Remarks:



1000 lm

$\kappa = 1$



F = 1000 lm
 K = 0.7
 Hcc = 0.8 m
 Hfc = 0.0 m
 Eave = 100 lx

	Pcc	Pw	Pfc
————	70	50	30
————	50	30	20

