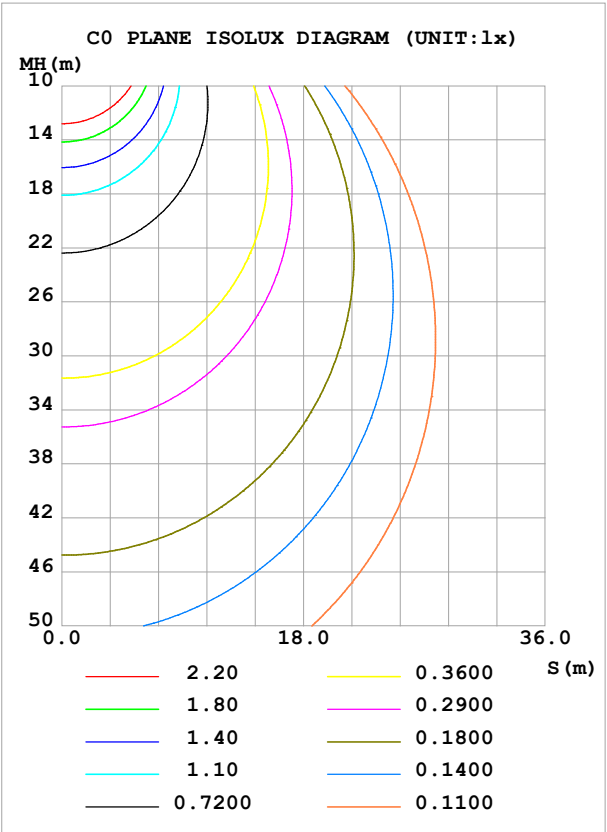
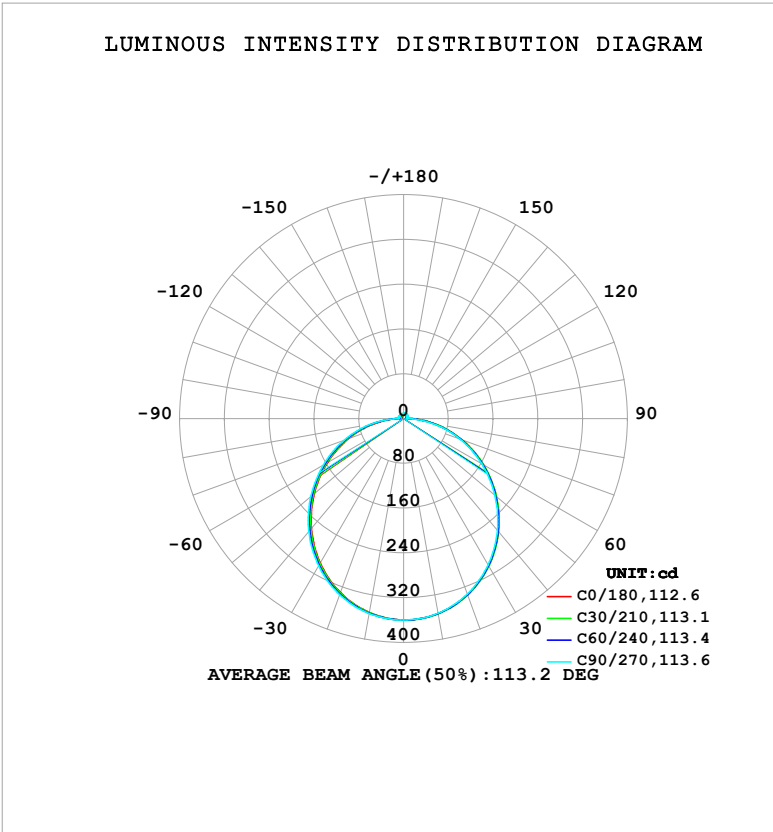


LUMINAIRE PHOTOMETRIC TEST REPORT

Test:U:24.00V I:0.6188A P:14.85W PF:1.000 Freq:0Hz		
Lamp Flux:1112.99x1 lm		
NAME: SF33-24V-5050-84-3500k-80	TYPE:	WEIGHT:
SPEC.:	DIM.: Length=1m	SERIAL No.:
MFR.: OLympia lighting	SUR.:	Shielding Angle:

DATA OF LAMP		PHOTOMETRIC DATA				Eff: 74.94 lm/W
MODEL	5050	I <sub>max</sub> (cd)	359.9	S/MH(C0/180)	1.24	
NOMINAL POWER(W)	15	LOR(%)	100.0	S/MH(C90/270)	1.26	
RATED VOLTAGE(V)	24	TOTAL FLUX(lm)	1113.0	η UP,DN(C0-180)	2.1,47.6	
NOMINAL FLUX(lm)	1112.99	CIE CLASS	DIRECT	η UP,DN(C180-360)	2.3,48.0	
LAMPS INSIDE	1	η up (%)	4.4	CIBSE SHR NOM	1.25	
TEST VOLTAGE(V)		η down (%)	95.6	CIBSE SHR MAX	1.35	



C Range: 0 - 360DEG  
C Interval: 30.0DEG  
Test Speed: HIGH  
Temperature:25.3℃  
Operators:  
Test Date:2025-04-29

γ Range: 0 - 180DEG  
γ Interval: 1.0DEG  
Test System:EVERFINE GO-2000B\_V1 SYSTEM V2.00.488  
Humidity:65.0%  
Test Distance:6.360m [K=1.0000]  
Remarks:

## ZONAL FLUX DIAGRAM

## ZONAL FLUX DIAGRAM:

$\gamma$	C0	C45	C90	C135	C180	C225	C270	C315	$\gamma$	$\Phi$ zone	$\Phi$ total	%lum, lamp
10	353.9	354.0	353.1	352.1	351.9	352.5	353.7	354.4	0- 10	34.04	34.04	3.06,3.06
20	334.7	334.8	333.4	331.5	330.7	332.3	334.6	335.9	10- 20	97.33	131.4	11.8,11.8
30	304.0	303.9	301.9	299.3	298.1	300.6	303.8	305.5	20- 30	147.1	278.4	25,25
40	263.5	263.2	260.8	257.7	256.3	259.4	263.4	265.4	30- 40	176.9	455.3	40.9,40.9
50	216.1	215.6	212.9	209.7	208.2	211.9	216.3	218.4	40- 50	183.8	639.1	57.4,57.4
60	164.3	163.7	161.0	158.3	156.9	160.9	165.3	167.1	50- 60	168.4	807.5	72.6,72.6
70	110.9	110.1	107.5	105.7	104.7	108.7	112.9	113.9	60- 70	134.5	942.1	84.6,84.6
80	57.47	56.49	53.91	53.03	52.86	56.65	60.40	60.66	70- 80	87.52	1030	92.5,92.5
90	13.63	10.86	6.158	11.11	13.21	13.29	10.30	13.95	80- 90	34.64	1064	95.6,95.6
100	5.158	6.101	6.591	6.352	4.892	7.730	9.774	7.352	90-100	8.213	1072	96.4,96.4
110	5.890	6.659	7.143	6.427	5.148	7.887	9.757	7.662	100-110	7.348	1080	97,97
120	6.587	7.205	7.746	7.033	5.938	8.089	9.551	7.821	110-120	7.239	1087	97.7,97.7
130	7.207	7.669	8.203	8.092	6.707	8.233	9.320	7.944	120-130	6.931	1094	98.3,98.3
140	7.763	7.943	8.538	8.622	7.355	8.404	9.124	8.055	130-140	6.260	1100	98.9,98.9
150	8.276	8.291	9.046	9.010	7.992	8.617	9.092	8.226	140-150	5.263	1105	99.3,99.3
160	8.777	8.809	9.393	9.331	8.622	8.881	9.106	8.557	150-160	4.044	1110	99.7,99.7
170	8.740	9.321	9.522	9.481	8.752	9.144	9.170	9.039	160-170	2.565	1112	99.9,99.9
180	8.993	9.444	9.499	9.462	8.996	9.438	9.493	9.454	170-180	0.8835	1113	100,100
DEG	LUMINOUS INTENSITY:cd									UNIT:lm		

Conical surface Flux(90deg): 547.8 lm

%lum = 49.2%

%lamp = 49.2%

Conical surface Flux(130deg): 880 lm

%lum = 79.1%

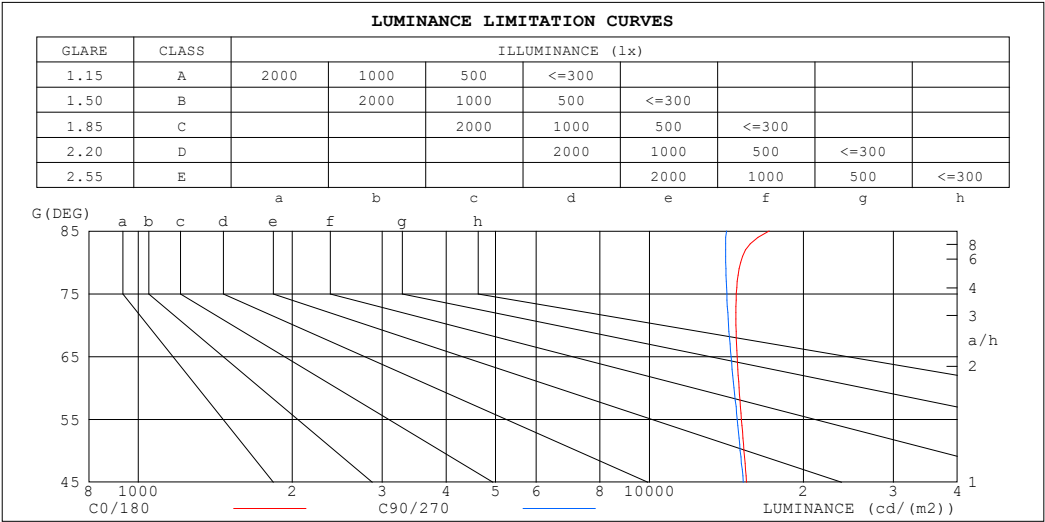
%lamp = 79.1%

C Range: 0 - 360DEG  
 C Interval: 30.0DEG  
 Test Speed: HIGH  
 Temperature:25.3℃  
 Operators:  
 Test Date:2025-04-29

$\gamma$  Range: 0 - 180DEG  
 $\gamma$  Interval: 1.0DEG  
 Test System:EVERFINE GO-2000B\_V1 SYSTEM V2.00.488  
 Humidity:65.0%  
 Test Distance:6.360m [K=1.0000]  
 Remarks:

LUMINANCE LIMITATION CURVES

Test:U:24.00V I:0.6188A P:14.85W PF:1.000 Freq:0Hz Lamp Flux:1112.99x1 lm		
NAME: SF33-24V-5050-84-3500k-80	TYPE:	WEIGHT:
SPEC.:	DIM.: Length=1m	SERIAL No.:
MFR.: OLympia lighting	SUR.:	Shielding Angle:



LUMINANCE cd/(m2)		
G (DEG)	C0/180	C90/270
85	17147	14149
80	15073	14101
75	14787	14167
70	14762	14274
65	14837	14439
60	14966	14630
55	15133	14836
50	15308	15047
45	15486	15262

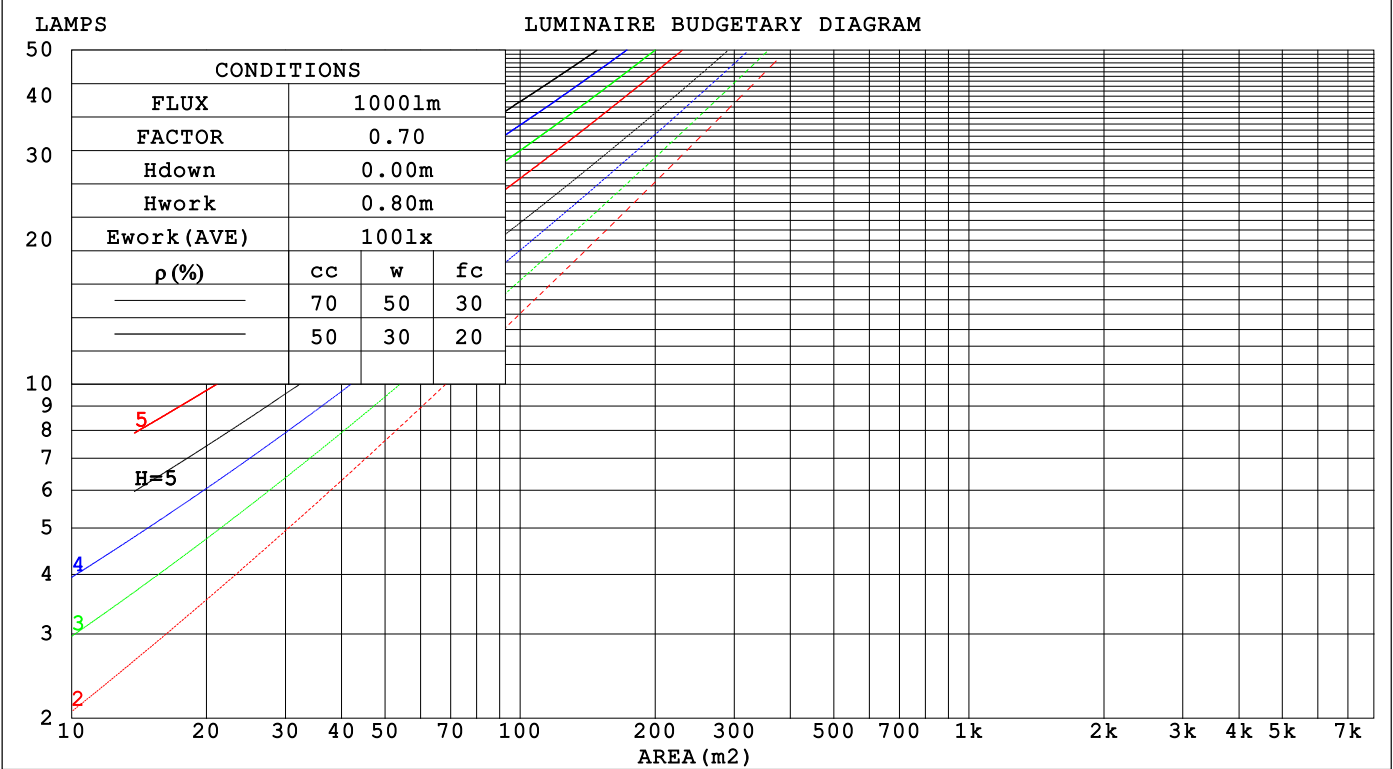
C Range: 0 - 360DEG  
C Interval: 30.0DEG  
Test Speed: HIGH  
Temperature:25.3℃  
Operators:  
Test Date:2025-04-29

γ Range: 0 - 180DEG  
γ Interval: 1.0DEG  
Test System:EVERFINE GO-2000B\_V1 SYSTEM V2.00.488  
Humidity:65.0%  
Test Distance:6.360m [K=1.0000]  
Remarks:

CU AND LUMINAIRE BUDGETARY ESTIMATE DIAGRAM

Test:U:24.00V I:0.6188A P:14.85W PF:1.000 Freq:0Hz		
Lamp Flux:1112.99x1 lm		
NAME: SF33-24V-5050-84-3500k-80	TYPE:	WEIGHT:
SPEC.:	DIM.: Length=1m	SERIAL No.:
MFR.: OLYMPIA lighting	SUR.:	Shielding Angle:

pcc	80%			70%			50%			30%			10%			0
pw	50%	30%	10%	50%	30%	10%	50%	30%	10%	50%	30%	10%	50%	30%	10%	0
pfc	20%			20%			20%			20%			20%			0
RCR	RCR:Room Cavity Ratio															



C Range: 0 - 360DEG

C Interval: 30.0DEG

Test Speed: HIGH

Temperature:25.3℃

Operators:

Test Date:2025-04-29

γ Range: 0 - 180DEG

γ Interval: 1.0DEG

Test System:EVERFINE GO-2000B\_V1 SYSTEM V2.00.488

Humidity:65.0%

Test Distance:6.360m [K=1.0000]

Remarks:

## WEC AND CCEC

Test:U:24.00V I:0.6188A P:14.85W PF:1.000 Freq:0Hz Lamp Flux:1112.99x1 lm		
NAME: SF33-24V-5050-84-3500k-80	TYPE:	WEIGHT:
SPEC.:	DIM.: Length=1m	SERIAL No.:
MFR.: OLympia lighting	SUR.:	Shielding Angle:

pcc	80%			70%			50%			30%			10%			0														
pw	50%	30%	10%	50%	30%	10%	50%	30%	10%	50%	30%	10%	50%	30%	10%	0														
pfc	20%			20%			20%			20%			20%			0														
RCR	RCR:Room Cavity Ratio															Wall Exitance Coefficients(WEC)														
0.0																														
1.0	.328	.186	.059	.319	.182	.058	.303	.174	.056	.289	.167	.053	.275	.160	.051															
2.0	.302	.165	.051	.294	.162	.050	.280	.156	.048	.267	.150	.047	.255	.144	.045															
3.0	.276	.147	.044	.270	.144	.043	.257	.139	.042	.245	.134	.041	.235	.130	.040															
4.0	.253	.132	.039	.247	.129	.038	.236	.125	.037	.226	.121	.037	.216	.117	.036															
5.0	.233	.119	.034	.228	.117	.034	.218	.113	.033	.208	.110	.033	.200	.107	.032															
6.0	.216	.108	.031	.211	.106	.031	.202	.103	.030	.193	.100	.030	.185	.098	.029															
7.0	.200	.099	.028	.196	.098	.028	.188	.095	.027	.180	.092	.027	.173	.090	.026															
8.0	.187	.091	.026	.183	.090	.025	.175	.088	.025	.168	.085	.025	.162	.083	.024															
9.0	.175	.084	.024	.171	.083	.023	.164	.081	.023	.158	.079	.023	.152	.077	.022															
10.0	.164	.079	.022	.161	.078	.022	.155	.076	.021	.149	.074	.021	.143	.072	.021															

pcc	80%			70%			50%			30%			10%			0
pw	50%	30%	10%	50%	30%	10%	50%	30%	10%	50%	30%	10%	50%	30%	10%	0
pfc	20%			20%			20%			20%			20%			0
RCR	RCR:Room Cavity Ratio						Ceiling Cavity Exitance Coefficients (CCEC)									
0.0	.224	.224	.224	.191	.191	.191	.131	.131	.131	.075	.075	.075	.024	.024	.024	
1.0	.215	.190	.167	.184	.163	.143	.126	.112	.099	.072	.065	.058	.023	.021	.019	
2.0	.207	.166	.131	.178	.143	.113	.122	.099	.079	.070	.057	.046	.023	.019	.015	
3.0	.200	.148	.107	.171	.128	.093	.118	.089	.065	.068	.052	.039	.022	.017	.013	
4.0	.192	.135	.092	.165	.117	.080	.113	.081	.056	.066	.048	.033	.021	.016	.011	
5.0	.185	.125	.081	.158	.108	.071	.109	.076	.050	.063	.044	.030	.020	.014	.010	
6.0	.177	.117	.073	.152	.101	.064	.105	.071	.045	.061	.042	.027	.020	.014	.009	
7.0	.170	.110	.068	.147	.095	.059	.101	.067	.042	.059	.039	.025	.019	.013	.008	
8.0	.164	.104	.063	.141	.090	.055	.098	.063	.039	.057	.037	.023	.018	.012	.008	
9.0	.158	.099	.060	.136	.086	.052	.094	.061	.037	.055	.036	.022	.018	.012	.007	
10.0	.152	.095	.057	.131	.083	.050	.091	.058	.035	.053	.034	.021	.017	.011	.007	

C Range: 0 - 360DEG  
C Interval: 30.0DEG  
Test Speed: HIGH  
Temperature:25.3℃  
Operators:  
Test Date:2025-04-29

γ Range: 0 - 180DEG  
γ Interval: 1.0DEG  
Test System:EVERFINE GO-2000B\_V1 SYSTEM V2.00.488  
Humidity:65.0%  
Test Distance:6.360m [K=1.0000]  
Remarks:

UGR(Unified Glare Rating) Table

Test:U:24.00V I:0.6188A P:14.85W PF:1.000 Freq:0Hz Lamp Flux:1112.99x1 lm										
NAME: SF33-24V-5050-84-3500k-80					TYPE:			WEIGHT:		
SPEC.:					DIM.: Length=1m			SERIAL No.:		
MFR.: OLympia lighting					SUR.:			Shielding Angle:		
ceiling/cavity	0.7	0.7	0.5	0.5	0.3	0.7	0.7	0.5	0.5	0.3
walls	0.5	0.3	0.5	0.3	0.3	0.5	0.3	0.5	0.3	0.3
working plane	0.2	0.2	0.2	0.2	0.2	0.2	0.2	0.2	0.2	0.2
Room dimensions	Viewed crosswise					Viewed endwise				
x = 2H y = 2H	19.7	21.2	20.1	21.5	21.8	19.6	21.1	20.0	21.4	21.7
3H	21.4	22.8	21.8	23.1	23.4	21.3	22.7	21.7	23.0	23.3
4H	22.2	23.5	22.6	23.8	24.2	22.0	23.3	22.4	23.7	24.0
6H	22.8	24.1	23.2	24.4	24.8	22.7	23.9	23.0	24.2	24.6
8H	23.1	24.3	23.5	24.7	25.0	22.9	24.1	23.3	24.4	24.8
12H	23.3	24.5	23.8	24.9	25.3	23.1	24.2	23.5	24.6	25.0
4H 2H	20.4	21.7	20.7	22.0	22.3	20.3	21.6	20.7	21.9	22.3
3H	22.3	23.4	22.7	23.8	24.2	22.2	23.3	22.6	23.7	24.1
4H	23.2	24.2	23.6	24.6	25.1	23.0	24.1	23.5	24.5	24.9
6H	24.0	24.9	24.4	25.3	25.8	23.8	24.7	24.3	25.2	25.6
8H	24.3	25.2	24.8	25.6	26.1	24.1	25.0	24.6	25.4	25.9
12H	24.6	25.4	25.1	25.9	26.4	24.3	25.1	24.8	25.6	26.1
8H 4H	23.5	24.4	24.0	24.8	25.3	23.4	24.3	23.9	24.7	25.2
6H	24.5	25.2	25.0	25.7	26.2	24.3	25.1	24.8	25.5	26.1
8H	25.0	25.6	25.5	26.1	26.7	24.7	25.4	25.3	25.9	26.4
12H	25.4	25.9	25.9	26.5	27.0	25.1	25.7	25.6	26.2	26.7
12H 4H	23.5	24.3	24.0	24.8	25.3	23.4	24.2	23.9	24.7	25.2
6H	24.6	25.2	25.1	25.7	26.3	24.4	25.1	25.0	25.6	26.1
8H	25.1	25.7	25.7	26.2	26.8	24.9	25.5	25.5	26.0	26.6
Variations with the observer position at spacings(CIE Pub.117):										
S = 1.0H	+ 0.1 / - 0.2					+ 0.1 / - 0.2				
1.5H	+ 0.2 / - 0.3					+ 0.2 / - 0.3				
2.0H	+ 0.1 / - 0.3					+ 0.1 / - 0.3				

CIE Pub.117, 1113 lm Total Lamp Luminous Flux Correct ( $8\log(F/F_0) = 0.4$ )  
Area: 0.022 m<sup>2</sup>

C Range: 0 - 360DEG  
C Interval: 30.0DEG  
Test Speed: HIGH  
Temperature:25.3℃  
Operators:  
Test Date:2025-04-29

γ Range: 0 - 180DEG  
γ Interval: 1.0DEG  
Test System:EVERFINE GO-2000B\_V1 SYSTEM V2.00.488  
Humidity:65.0%  
Test Distance:6.360m [K=1.0000]  
Remarks:

## UTILIZATION FACTORS TABLE

Test:U:24.00V I:0.6188A P:14.85W PF:1.000 Freq:0Hz Lamp Flux:1112.99x1 lm		
NAME: SF33-24V-5050-84-3500k-80	TYPE:	WEIGHT:
SPEC.:	DIM.: Length=1m	SERIAL No.:
MFR.: OLympia lighting	SUR.:	Shielding Angle:

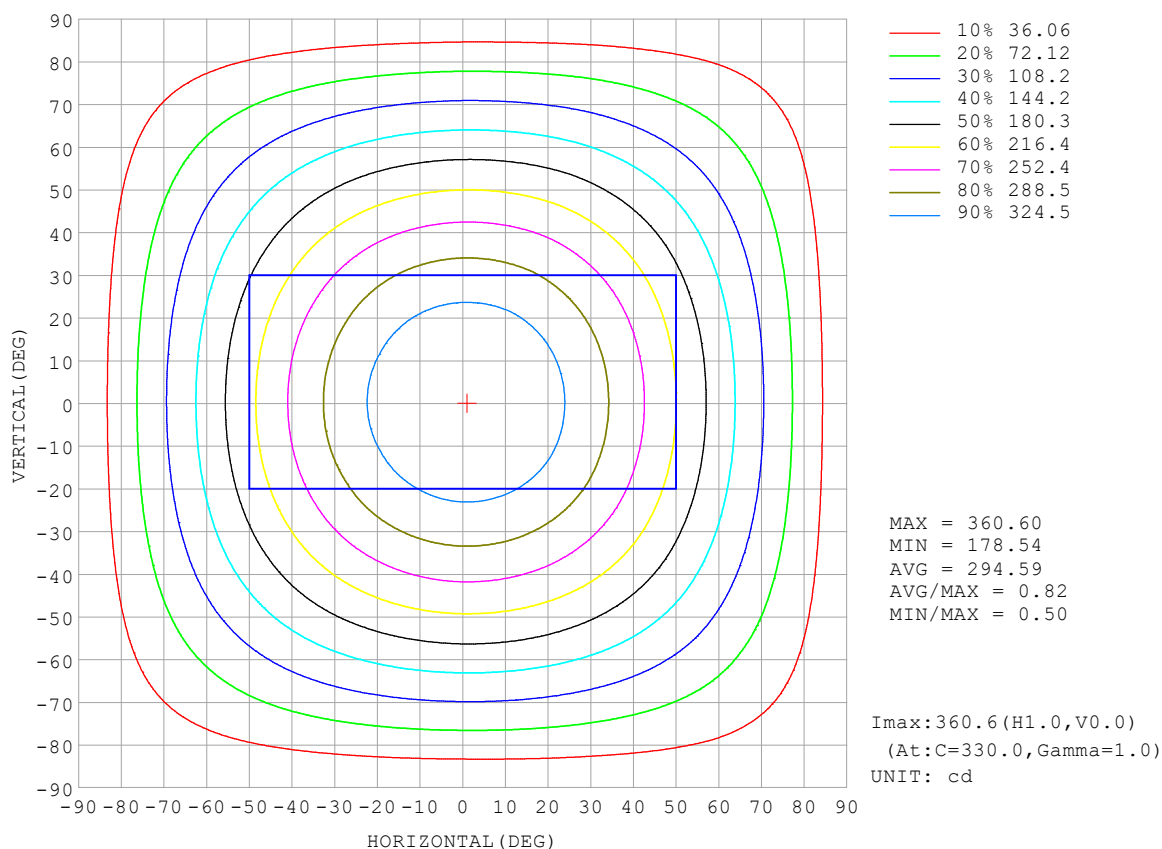
REFLECTANCE										
Ceiling	0.8	0.8	0.8	0.7	0.7	0.7	0.5	0.5	0.5	0
Walls	0.7	0.5	0.3	0.7	0.5	0.3	0.7	0.5	0.3	0
Working plane	0.2	0.2	0.2	0.2	0.2	0.2	0.2	0.2	0.2	0
ROOM INDEX	UTILIZATION FACTORS (PERCENT) $k(RI) \times RCR = 5$									
$k = 0.60$	55	44	37	54	43	36	53	43	36	30
0.80	65	53	46	64	53	46	62	52	45	38
1.00	73	62	54	72	61	54	69	62	53	46
1.25	80	69	62	79	69	61	76	67	60	52
1.50	85	75	68	83	74	67	80	72	66	57
2.00	92	83	76	90	82	75	86	79	74	65
2.50	96	88	82	94	86	81	90	83	78	69
3.00	100	93	87	97	91	85	93	87	83	73
4.00	104	98	93	101	96	91	96	92	88	78
5.00	107	101	97	104	99	95	98	95	91	81
ROOM INDEX	UF (total)									Direct
According to DIN EN 13032-2 2004			Suspended					SHRNOM = 1.25		

C Range: 0 - 360DEG  
 C Interval: 30.0DEG  
 Test Speed: HIGH  
 Temperature: 25.3 °C  
 Operators:  
 Test Date: 2025-04-29

γ Range: 0 - 180DEG  
 γ Interval: 1.0DEG  
 Test System: EVERFINE GO-2000B\_V1 SYSTEM V2.00.488  
 Humidity: 65.0%  
 Test Distance: 6.360m [K=1.0000]  
 Remarks:

## ISOCANDELA DIAGRAM

Test:U:24.00V I:0.6188A P:14.85W PF:1.000 Freq:0Hz Lamp Flux:1112.99x1 lm		
NAME: SF33-24V-5050-84-3500k-80	TYPE:	WEIGHT:
SPEC.:	DIM.: Length=1m	SERIAL No.:
MFR.: OLympia lighting	SUR.:	Shielding Angle:



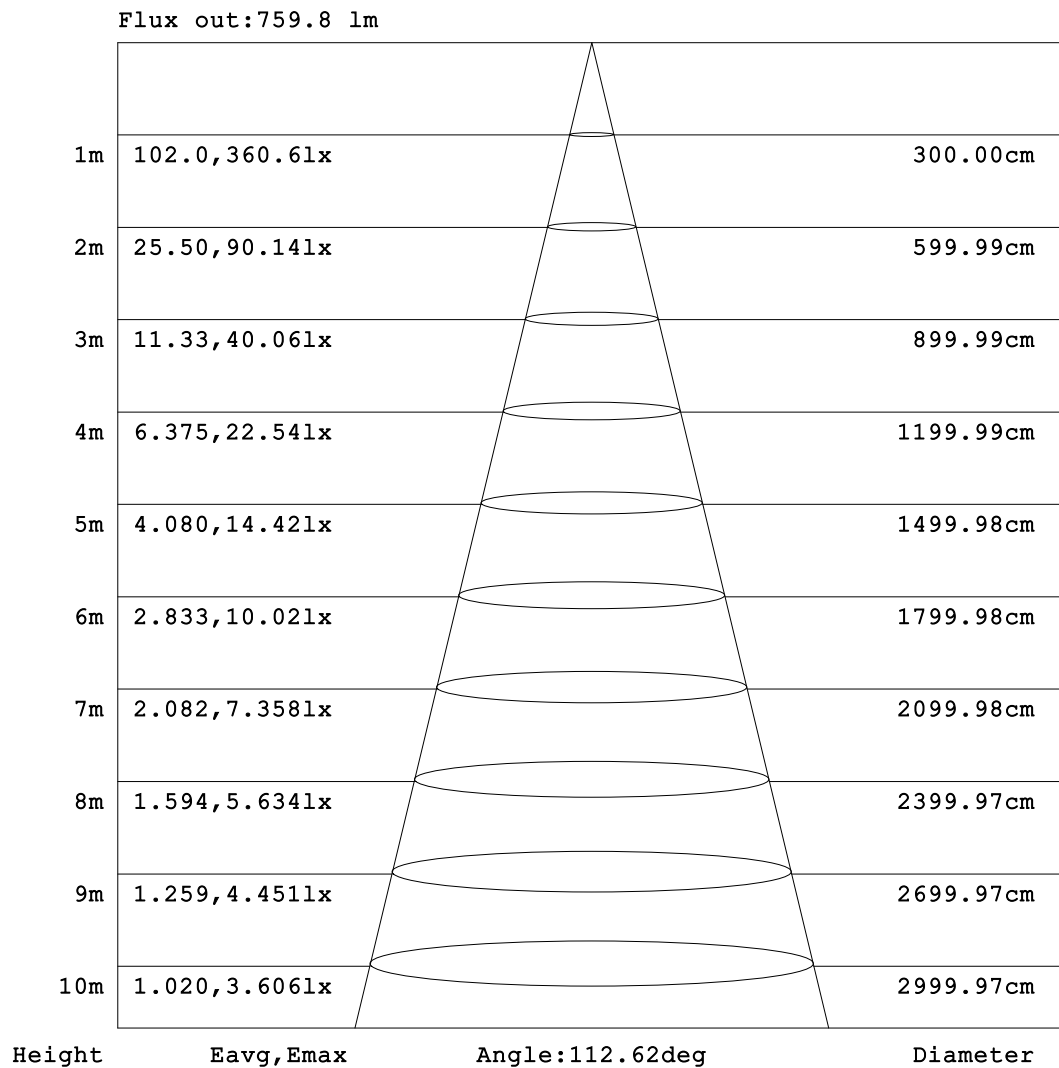
C Range: 0 - 360DEG  
C Interval: 30.0DEG  
Test Speed: HIGH  
Temperature:25.3℃  
Operators:  
Test Date:2025-04-29

γ Range: 0 - 180DEG  
γ Interval: 1.0DEG  
Test System:EVERFINE GO-2000B\_V1 SYSTEM V2.00.488  
Humidity:65.0%  
Test Distance:6.360m [K=1.0000]  
Remarks:



## AAI Figure

Test:U:24.00V I:0.6188A P:14.85W PF:1.000 Freq:0Hz Lamp Flux:1112.99x1 lm		
NAME: SF33-24V-5050-84-3500k-80	TYPE:	WEIGHT:
SPEC.:	DIM.: Length=1m	SERIAL No.:
MFR.: OLympia lighting	SUR.:	Shielding Angle:



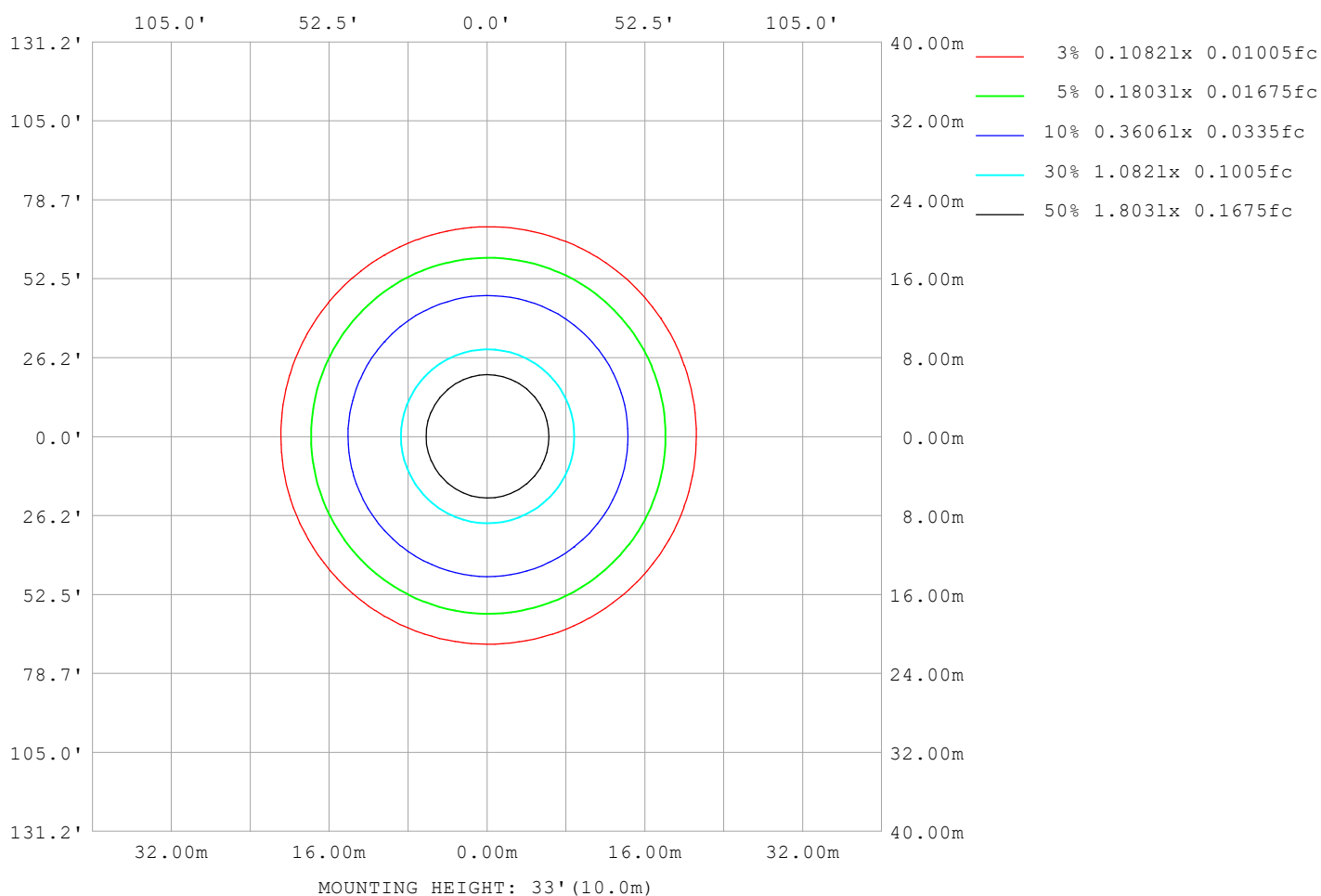
Note:The Curves indicate the illuminated area and the average illumination when the luminaire is at different distance.

C Range: 0 - 360DEG  
C Interval: 30.0DEG  
Test Speed: HIGH  
Temperature:25.3℃  
Operators:  
Test Date:2025-04-29

γ Range: 0 - 180DEG  
γ Interval: 1.0DEG  
Test System:EVERFINE GO-2000B\_V1 SYSTEM V2.00.488  
Humidity:65.0%  
Test Distance:6.360m [K=1.0000]  
Remarks:

## ISOLUX DIAGRAM

Test:U:24.00V I:0.6188A P:14.85W PF:1.000 Freq:0Hz Lamp Flux:1112.99x1 lm		
NAME: SF33-24V-5050-84-3500k-80	TYPE:	WEIGHT:
SPEC.:	DIM.: Length=1m	SERIAL No.:
MFR.: OLympia lighting	SUR.:	Shielding Angle:



C Range: 0 - 360DEG  
C Interval: 30.0DEG  
Test Speed: HIGH  
Temperature:25.3℃  
Operators:  
Test Date:2025-04-29

γ Range: 0 - 180DEG  
γ Interval: 1.0DEG  
Test System:EVERFINE GO-2000B\_V1 SYSTEM V2.00.488  
Humidity:65.0%  
Test Distance:6.360m [K=1.0000]  
Remarks:

## LED Avg.L Report

Test:U:24.00V I:0.6188A P:14.85W PF:1.000 Freq:0Hz Lamp Flux:1112.99x1 lm		
NAME: SF33-24V-5050-84-3500k-80	TYPE:	WEIGHT:
SPEC.:	DIM.: Length=1m	SERIAL No.:
MFR.: OLympia lighting	SUR.:	Shielding Angle:

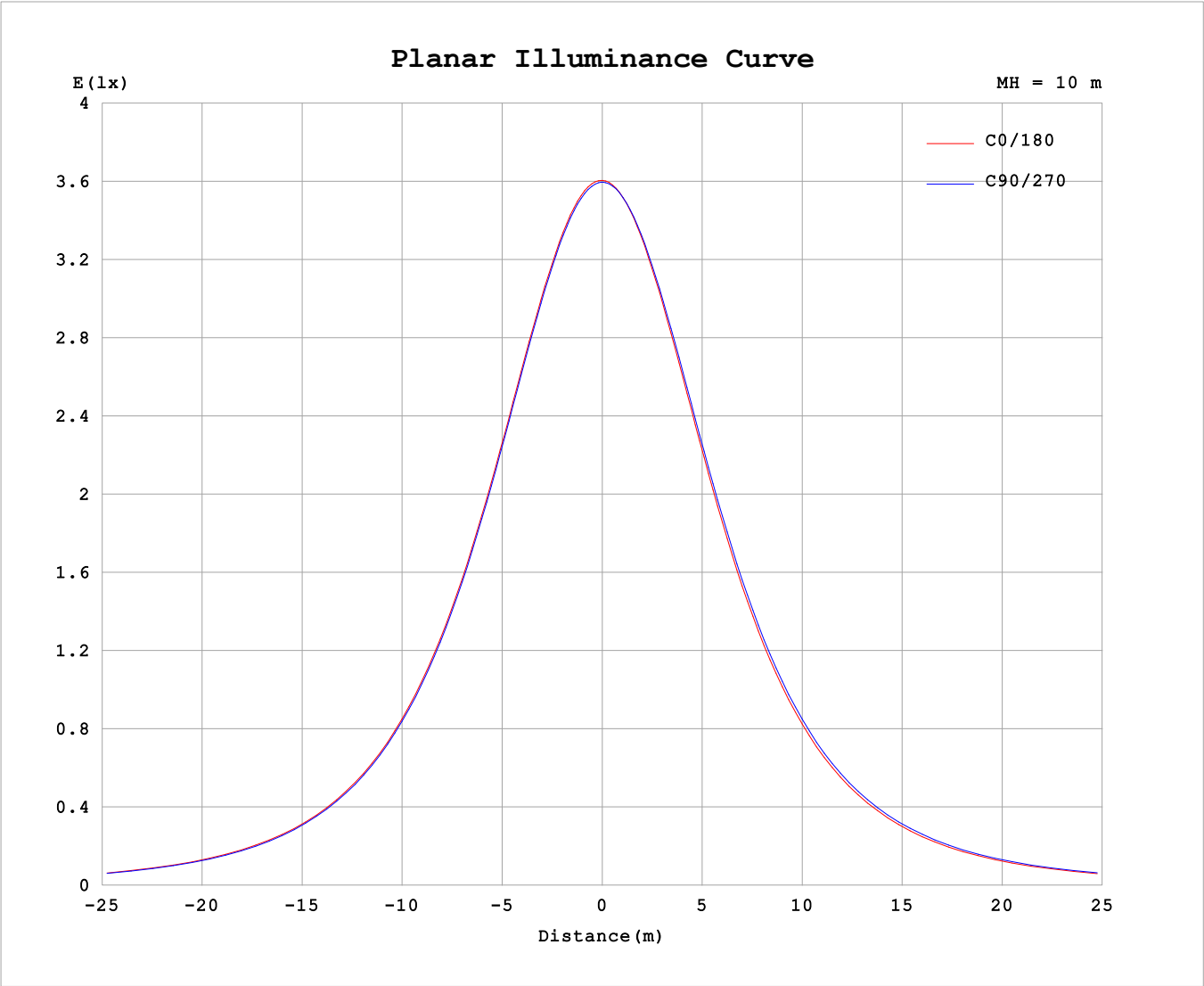
AvgL	cd/m2
L_0~180 (65) av	14440
L_0~180 (75) av	14293
L_0~180 (85) av	15784
L_90~270 (65) av	14708
L_90~270 (75) av	14696
L_90~270 (85) av	15938
L_45 (65) av	14650
L_45 (75) av	14614
L_45 (85) av	16059

Standard: GB/T 29293-2012

C Range: 0 - 360DEG  
C Interval: 30.0DEG  
Test Speed: HIGH  
Temperature:25.3℃  
Operators:  
Test Date:2025-04-29

γ Range: 0 - 180DEG  
γ Interval: 1.0DEG  
Test System:EVERFINE GO-2000B\_V1 SYSTEM V2.00.488  
Humidity:65.0%  
Test Distance:6.360m [K=1.0000]  
Remarks:

Planar Illuminance Curve



C Range: 0 - 360DEG	γ Range: 0 - 180DEG
C Interval: 30.0DEG	γ Interval: 1.0DEG
Test Speed: HIGH	Test System:EVERFINE GO-2000B_V1 SYSTEM V2.00.488
Temperature:25.3℃	Humidity:65.0%
Operators:	Test Distance:6.360m [K=1.0000]
Test Date:2025-04-29	Remarks:

## LUMINOUS DISTRIBUTION INTENSITY DATA

Test:U:24.00V I:0.6188A P:14.85W PF:1.000 Freq:0Hz Lamp Flux:1112.99x1 lm		
NAME: SF33-24V-5050-84-3500k-80	TYPE:	WEIGHT:
SPEC.:	DIM.: Length=1m	SERIAL No.:
MFR.: OLympia lighting	SUR.:	Shielding Angle:

Table--1

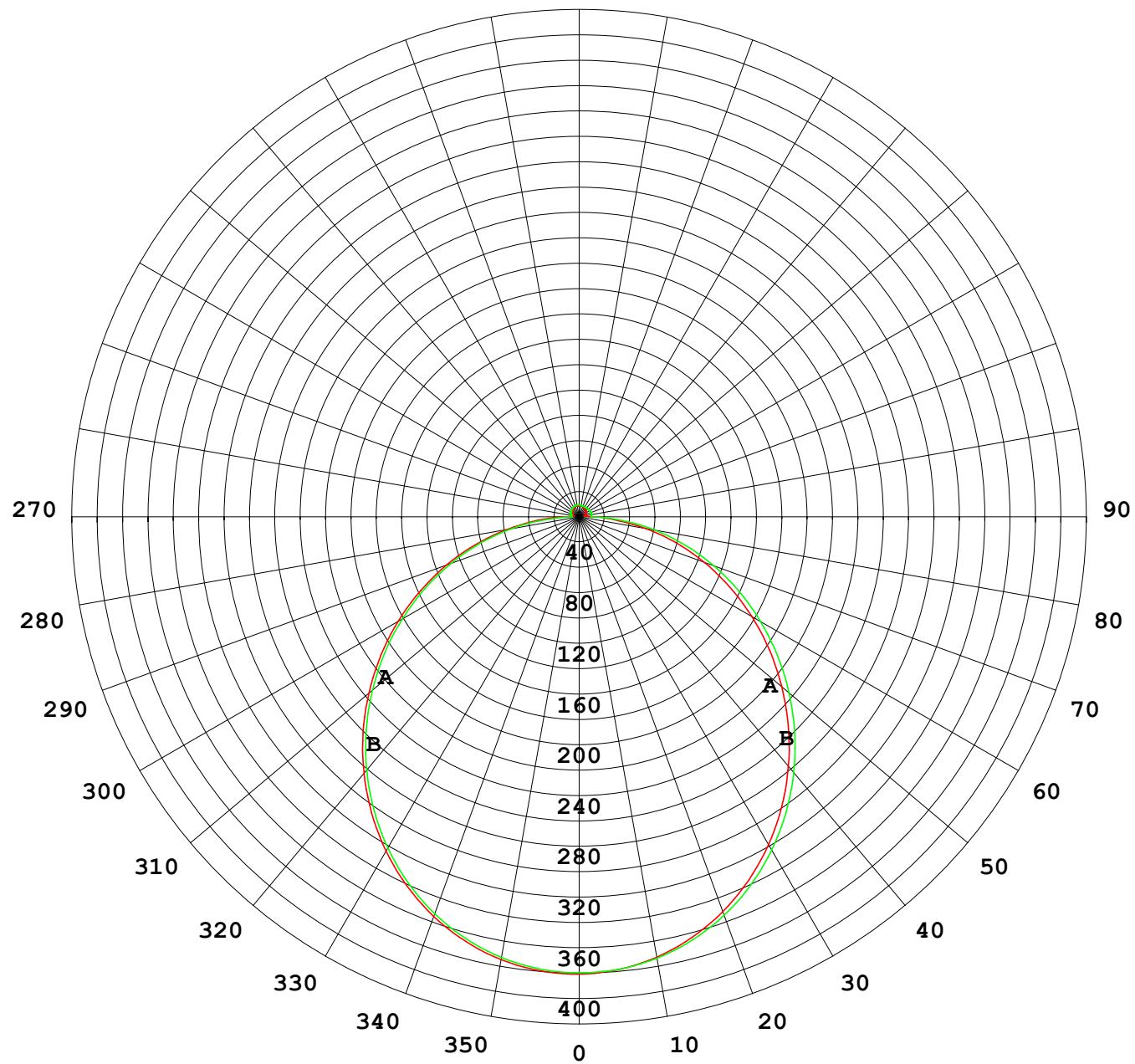
UNIT: cd

C (DEG) γ (DEG)	0	30	60	90	120	150	180	210	240	270	300	330							
0	360	360	360	360	360	360	360	360	360	360	360	360							
5	359	359	358	358	358	358	358	358	358	358	359	359							
10	354	354	354	353	352	352	352	352	353	354	354	354							
15	346	346	346	345	344	343	343	343	345	346	347	347							
20	335	335	334	333	332	331	331	331	333	335	336	336							
25	321	321	320	319	317	316	316	317	319	321	322	322							
30	304	304	303	302	300	299	298	299	302	304	306	305							
35	285	285	284	282	280	279	278	280	282	285	287	286							
40	263	264	262	261	259	257	256	258	261	263	266	265							
45	240	241	239	238	235	234	233	235	238	241	243	242							
50	216	216	215	213	211	209	208	210	214	216	219	218							
55	191	191	189	187	185	184	183	185	189	191	193	193							
60	164	165	163	161	159	157	157	159	163	165	167	167							
65	138	138	136	134	133	131	131	133	137	139	141	140							
70	111	111	109	107	106	105	105	107	110	113	114	113							
75	84.0	84.2	82.3	80.7	79.9	79.0	78.7	81.1	84.2	86.6	87.8	86.7							
80	57.5	57.5	55.5	53.9	53.2	52.8	52.9	55.1	58.2	60.4	61.3	60.1							
85	32.8	32.3	29.0	27.1	26.5	27.5	27.7	29.4	31.9	34.0	34.9	34.5							
90	13.6	12.8	8.95	6.16	9.16	13.1	13.2	13.9	12.6	10.3	13.4	14.6							
95	4.87	5.53	6.18	6.36	6.15	6.62	5.23	6.85	8.63	9.77	8.48	5.90							
100	5.16	5.79	6.41	6.59	6.15	6.56	4.89	6.73	8.73	9.77	8.63	6.07							
105	5.52	6.10	6.66	6.85	6.23	6.46	5.09	6.87	8.73	9.82	8.74	6.31							
110	5.89	6.41	6.91	7.14	6.56	6.30	5.15	6.92	8.86	9.76	8.79	6.53							
115	6.24	6.72	7.16	7.46	7.08	6.18	5.45	7.12	8.88	9.68	8.80	6.73							
120	6.59	7.02	7.39	7.75	7.66	6.40	5.94	7.30	8.88	9.55	8.74	6.91							
125	6.91	7.29	7.62	8.00	8.06	7.08	6.32	7.45	8.88	9.44	8.70	7.07							
130	7.21	7.51	7.83	8.20	8.29	7.89	6.71	7.59	8.88	9.32	8.66	7.22							
135	7.49	7.48	8.02	8.37	8.50	8.33	7.03	7.75	8.88	9.22	8.64	7.32							
140	7.76	7.69	8.20	8.54	8.71	8.53	7.35	7.92	8.89	9.12	8.62	7.49							
145	8.01	7.87	8.37	8.69	8.92	8.73	7.67	8.10	8.91	9.04	8.62	7.65							
150	8.28	8.06	8.52	9.05	9.10	8.92	7.99	8.29	8.95	9.09	8.63	7.82							
155	8.53	8.26	8.97	9.24	9.27	9.10	8.32	8.50	9.00	9.11	8.82	8.02							
160	8.78	8.47	9.15	9.39	9.39	9.27	8.62	8.71	9.05	9.11	8.88	8.24							
165	8.95	8.67	9.27	9.48	9.46	9.38	8.89	8.91	9.11	9.11	8.96	8.51							
170	8.74	9.27	9.37	9.52	9.51	9.46	8.75	9.10	9.19	9.17	9.09	8.99							
175	8.89	9.38	9.44	9.52	9.52	9.47	8.91	9.28	9.33	9.30	9.28	9.22							
180	8.99	9.41	9.47	9.50	9.49	9.44	9.00	9.40	9.47	9.49	9.49	9.42							

C Range: 0 - 360DEG  
C Interval: 30.0DEG  
Test Speed: HIGH  
Temperature:25.3℃  
Operators:  
Test Date:2025-04-29

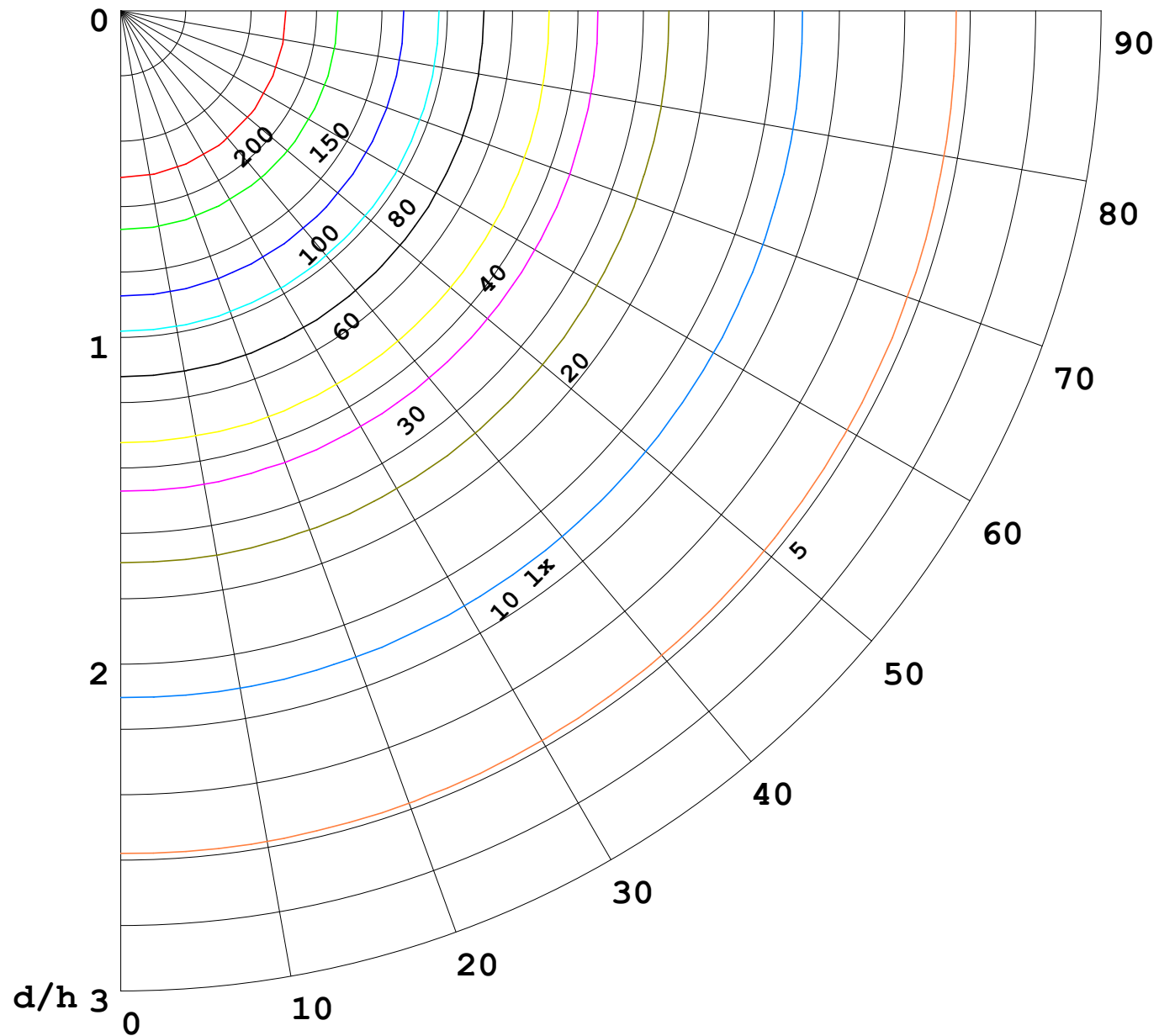
γ Range: 0 - 180DEG  
γ Interval: 1.0DEG  
Test System:EVERFINE GO-2000B\_V1 SYSTEM V2.00.488  
Humidity:65.0%  
Test Distance:6.360m [K=1.0000]  
Remarks:

I (cd)



1000 lm

$\kappa = 1$



F = 1000 lm  
 K = 0.7  
 Hcc = 0.8 m  
 Hfc = 0.0 m  
 Eave = 100 lx

	Pcc	Pw	Pfc
————	70	50	30
————	50	30	20

