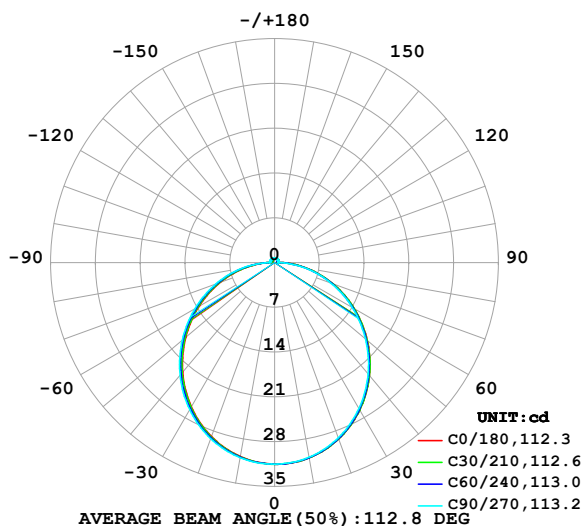


LUMINAIRE PHOTOMETRIC TEST REPORT

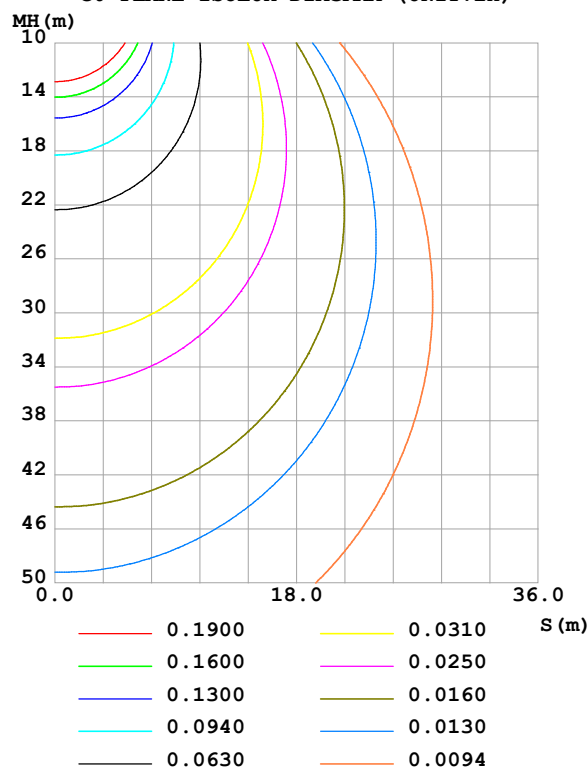
Test:U:24.00V I:0.6154A P:14.77W PF:1.000 Freq:0Hz Lamp Flux:96.9201x1 lm		
NAME: SF33-24V-5050-84-B	TYPE:	WEIGHT:
SPEC.:	DIM.: Length=1m	SERIAL No.:
MFR.: OLympia lighting	SUR.:	Shielding Angle:

DATA OF LAMP		PHOTOMETRIC DATA				Eff: 6.56 lm/W
MODEL	5050	I _{max} (cd)	31.51	S/MH(C0/180)	1.24	
NOMINAL POWER(W)	15	LOR(%)	100.0	S/MH(C90/270)	1.25	
RATED VOLTAGE(V)	24	TOTAL FLUX(lm)	96.920	η UP,DN(C0-180)	2.0,47.7	
NOMINAL FLUX(lm)	96.9201	CIE CLASS	DIRECT	η UP,DN(C180-360)	2.2,48.0	
LAMPS INSIDE	1	η up (%)	4.3	CIBSE SHR NOM	1.25	
TEST VOLTAGE(V)		η down (%)	95.7	CIBSE SHR MAX	1.35	

LUMINOUS INTENSITY DISTRIBUTION DIAGRAM



C0 PLANE ISOLUX DIAGRAM (UNIT:lx)



C Range: 0 - 360DEG
C Interval: 30.0DEG
Test Speed: HIGH
Temperature:25.3℃
Operators:
Test Date:2025-04-28

γ Range: 0 - 180DEG
γ Interval: 1.0DEG
Test System:EVERFINE GO-2000B_V1 SYSTEM V2.00.488
Humidity:65.0%
Test Distance:6.360m [K=1.0000]
Remarks:

ZONAL FLUX DIAGRAM

ZONAL FLUX DIAGRAM:

γ	C0	C45	C90	C135	C180	C225	C270	C315	γ	Φ zone	Φ total	%lum, lamp
10	31.01	31.00	30.90	30.82	30.80	30.86	30.97	31.04	0- 10	2.980	2.980	3.07,3.07
20	29.33	29.29	29.14	28.99	28.93	29.08	29.28	29.40	10- 20	8.518	11.50	11.9,11.9
30	26.62	26.57	26.36	26.15	26.05	26.27	26.56	26.72	20- 30	12.86	24.36	25.1,25.1
40	23.08	23.00	22.76	22.48	22.37	22.64	23.01	23.20	30- 40	15.45	39.82	41.1,41.1
50	18.90	18.81	18.56	18.26	18.13	18.45	18.85	19.07	40- 50	16.04	55.85	57.6,57.6
60	14.37	14.27	14.02	13.74	13.62	13.96	14.36	14.56	50- 60	14.67	70.52	72.8,72.8
70	9.703	9.603	9.364	9.141	9.037	9.378	9.767	9.919	60- 70	11.69	82.21	84.8,84.8
80	5.050	4.949	4.741	4.574	4.509	4.822	5.184	5.280	70- 80	7.587	89.80	92.7,92.7
90	1.210	0.9549	0.5484	0.9446	1.052	1.061	0.8334	1.188	80- 90	2.986	92.79	95.7,95.7
100	0.4332	0.5155	0.5628	0.5969	0.4361	0.6498	0.8081	0.6113	90-100	0.7153	93.50	96.5,96.5
110	0.4994	0.5372	0.5657	0.6314	0.4881	0.6585	0.8081	0.6300	100-110	0.6270	94.13	97.1,97.1
120	0.5545	0.5646	0.5945	0.6675	0.5430	0.6758	0.7994	0.6474	110-120	0.6148	94.74	97.8,97.8
130	0.6150	0.6194	0.6263	0.7021	0.5921	0.6917	0.7821	0.6661	120-130	0.5814	95.32	98.4,98.4
140	0.6555	0.6671	0.6725	0.7324	0.6412	0.7105	0.7705	0.6661	130-140	0.5248	95.85	98.9,98.9
150	0.6931	0.6975	0.7446	0.7641	0.6961	0.7292	0.7590	0.6819	140-150	0.4424	96.29	99.4,99.4
160	0.7364	0.7321	0.7850	0.7872	0.7422	0.7523	0.7590	0.7122	150-160	0.3401	96.63	99.7,99.7
170	0.7537	0.7624	0.7966	0.7973	0.7422	0.7711	0.7677	0.7555	160-170	0.2150	96.85	99.9,99.9
180	0.7480	0.7812	0.7966	0.7973	0.7422	0.7812	0.7937	0.7858	170-180	0.0739	96.92	100,100
DEG	LUMINOUS INTENSITY:cd									UNIT:lm		

Conical surface Flux(90deg): 47.889 lm

%lum = 49.4%

%lamp = 49.4%

Conical surface Flux(130deg): 76.821 lm

%lum = 79.3%

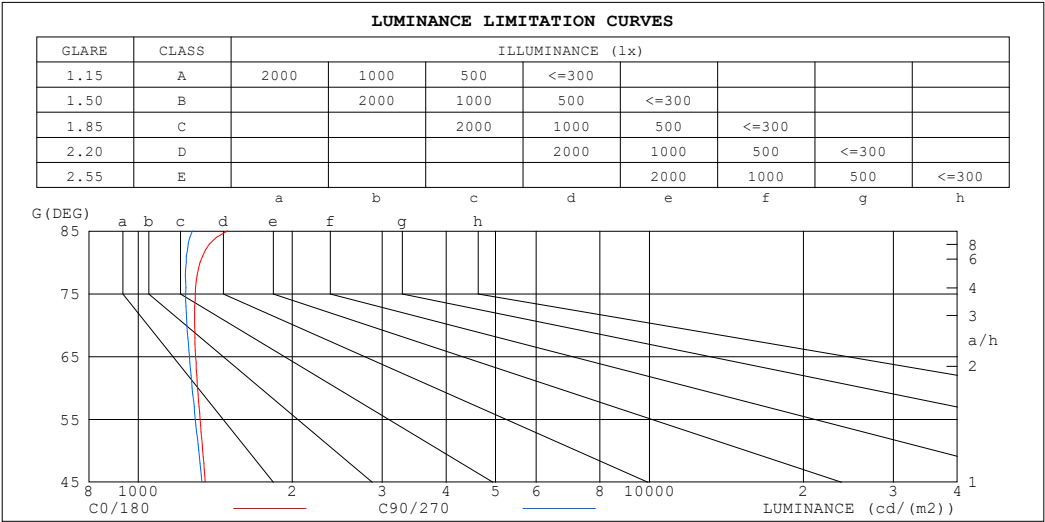
%lamp = 79.3%

C Range: 0 - 360DEG
 C Interval: 30.0DEG
 Test Speed: HIGH
 Temperature:25.3℃
 Operators:
 Test Date:2025-04-28

γ Range: 0 - 180DEG
 γ Interval: 1.0DEG
 Test System:EVERFINE GO-2000B_V1 SYSTEM V2.00.488
 Humidity:65.0%
 Test Distance:6.360m [K=1.0000]
 Remarks:

LUMINANCE LIMITATION CURVES

Test:U:24.00V I:0.6154A P:14.77W PF:1.000 Freq:0Hz Lamp Flux:96.9201x1 lm		
NAME: SF33-24V-5050-84-B	TYPE:	WEIGHT:
SPEC.:	DIM.: Length=1m	SERIAL No.:
MFR.: OLYMPIA lighting	SUR.:	Shielding Angle:



LUMINANCE cd/(m2)		
G (DEG)	C0/180	C90/270
85	1494	1276
80	1321	1241
75	1292	1238
70	1289	1245
65	1294	1258
60	1306	1274
55	1321	1293
50	1336	1312
45	1352	1332

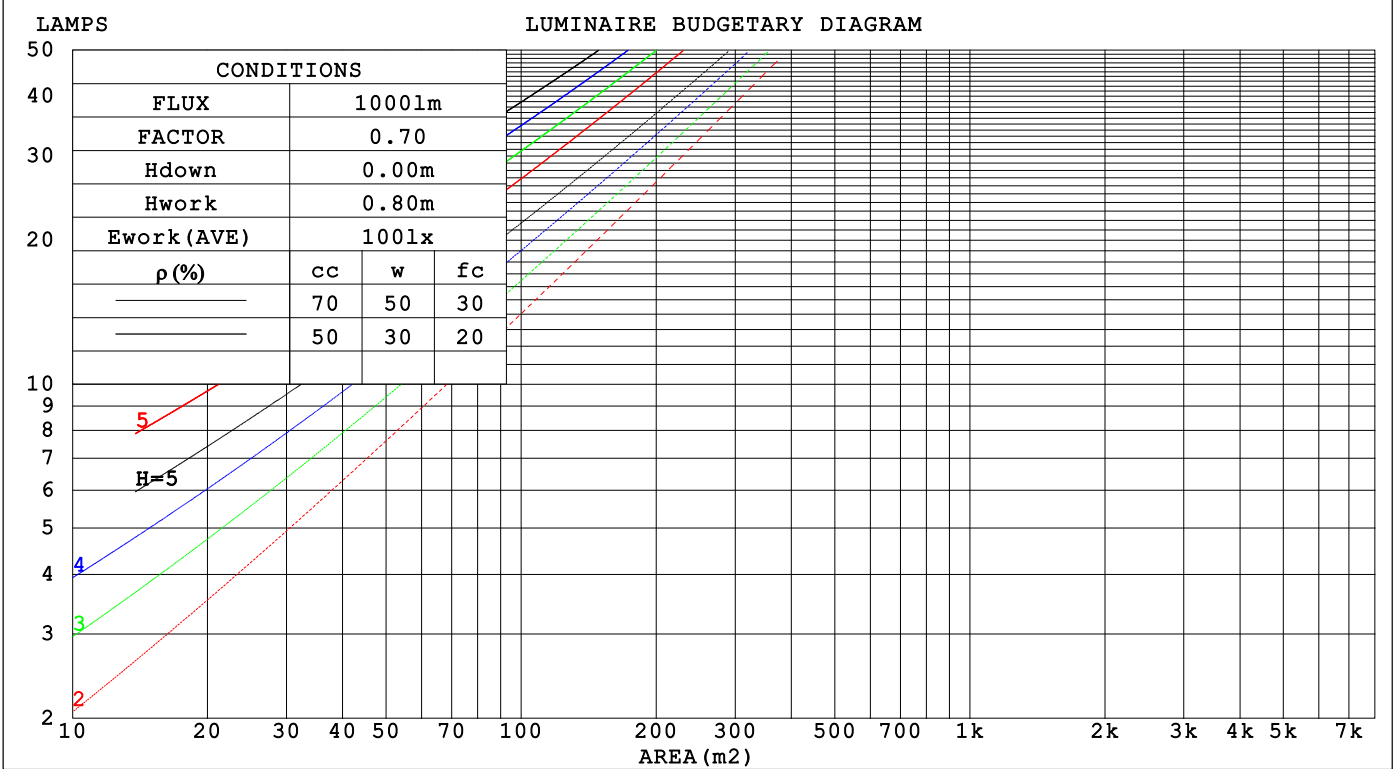
C Range: 0 - 360DEG
C Interval: 30.0DEG
Test Speed: HIGH
Temperature:25.3℃
Operators:
Test Date:2025-04-28

γ Range: 0 - 180DEG
γ Interval: 1.0DEG
Test System:EVERFINE GO-2000B_V1 SYSTEM V2.00.488
Humidity:65.0%
Test Distance:6.360m [K=1.0000]
Remarks:

CU AND LUMINAIRE BUDGETARY ESTIMATE DIAGRAM

Test:U:24.00V I:0.6154A P:14.77W PF:1.000 Freq:0Hz		
Lamp Flux:96.9201x1 lm		
NAME: SF33-24V-5050-84-B	TYPE:	WEIGHT:
SPEC.:	DIM.: Length=1m	SERIAL No.:
MFR.: OLYMPIA lighting	SUR.:	Shielding Angle:

pcc	80%			70%			50%			30%			10%			0
p _w	50%	30%	10%	50%	30%	10%	50%	30%	10%	50%	30%	10%	50%	30%	10%	0
p _{fc}	20%			20%			20%			20%			20%			0
RCR	RCR:Room Cavity Ratio															



C Range: 0 - 360DEG

C Interval: 30.0DEG

Test Speed: HIGH

Temperature:25.3℃

Operators:

Test Date:2025-04-28

γ Range: 0 - 180DEG

γ Interval: 1.0DEG

Test System:EVERFINE GO-2000B_V1 SYSTEM V2.00.488

Humidity:65.0%

Test Distance:6.360m [K=1.0000]

Remarks:

WEC AND CCEC

Test:U:24.00V I:0.6154A P:14.77W PF:1.000 Freq:0Hz Lamp Flux:96.9201x1 lm		
NAME: SF33-24V-5050-84-B	TYPE:	WEIGHT:
SPEC.:	DIM.: Length=1m	SERIAL No.:
MFR.: OLympia lighting	SUR.:	Shielding Angle:

pcc	80%			70%			50%			30%			10%			0														
pw	50%	30%	10%	50%	30%	10%	50%	30%	10%	50%	30%	10%	50%	30%	10%	0														
pfc	20%			20%			20%			20%			20%			0														
RCR	RCR:Room Cavity Ratio															Wall Exitance Coefficients(WEC)														
0.0																														
1.0	.327	.186	.059	.319	.182	.058	.303	.174	.055	.288	.166	.053	.275	.159	.051															
2.0	.301	.165	.051	.294	.162	.050	.280	.156	.048	.267	.150	.047	.255	.144	.045															
3.0	.276	.147	.044	.269	.144	.043	.257	.139	.042	.245	.134	.041	.234	.130	.040															
4.0	.253	.131	.039	.247	.129	.038	.236	.125	.037	.226	.121	.037	.216	.117	.036															
5.0	.233	.119	.034	.228	.117	.034	.218	.113	.033	.208	.110	.033	.200	.107	.032															
6.0	.215	.108	.031	.211	.106	.031	.202	.103	.030	.193	.100	.030	.185	.098	.029															
7.0	.200	.099	.028	.196	.098	.028	.188	.095	.027	.180	.092	.027	.173	.090	.026															
8.0	.186	.091	.026	.183	.090	.025	.175	.088	.025	.168	.085	.025	.162	.083	.024															
9.0	.174	.084	.024	.171	.083	.023	.164	.081	.023	.158	.079	.023	.152	.077	.022															
10.0	.164	.079	.022	.161	.078	.022	.155	.076	.021	.149	.074	.021	.144	.072	.021															

pcc	80%			70%			50%			30%			10%			0
pw	50%	30%	10%	50%	30%	10%	50%	30%	10%	50%	30%	10%	50%	30%	10%	0
pfc	20%			20%			20%			20%			20%			0
RCR	RCR:Room Cavity Ratio						Ceiling Cavity Exitance Coefficients (CCEC)									
0.0	.223	.223	.223	.191	.191	.191	.130	.130	.130	.075	.075	.075	.024	.024	.024	
1.0	.214	.189	.166	.183	.162	.143	.125	.111	.099	.072	.064	.057	.023	.021	.019	
2.0	.207	.165	.130	.177	.142	.112	.121	.098	.078	.070	.057	.046	.022	.018	.015	
3.0	.199	.148	.107	.170	.127	.092	.117	.088	.065	.068	.052	.038	.022	.017	.013	
4.0	.191	.134	.091	.164	.116	.079	.113	.081	.056	.065	.047	.033	.021	.015	.011	
5.0	.184	.124	.080	.158	.107	.070	.109	.075	.049	.063	.044	.029	.020	.014	.010	
6.0	.176	.116	.072	.152	.100	.063	.105	.070	.045	.061	.041	.027	.020	.014	.009	
7.0	.169	.109	.067	.146	.094	.058	.101	.066	.041	.059	.039	.025	.019	.013	.008	
8.0	.163	.103	.062	.140	.090	.054	.097	.063	.039	.056	.037	.023	.018	.012	.008	
9.0	.157	.098	.059	.135	.085	.051	.094	.060	.036	.055	.035	.022	.018	.012	.007	
10.0	.151	.094	.056	.130	.082	.049	.090	.057	.035	.053	.034	.021	.017	.011	.007	

C Range: 0 - 360DEG
C Interval: 30.0DEG
Test Speed: HIGH
Temperature:25.3℃
Operators:
Test Date:2025-04-28

γ Range: 0 - 180DEG
γ Interval: 1.0DEG
Test System:EVERFINE GO-2000B_V1 SYSTEM V2.00.488
Humidity:65.0%
Test Distance:6.360m [K=1.0000]
Remarks:

UGR(Unified Glare Rating) Table

Test:U:24.00V I:0.6154A P:14.77W PF:1.000 Freq:0Hz Lamp Flux:96.9201x1 lm											
NAME: SF33-24V-5050-84-B					TYPE:			WEIGHT:			
SPEC.:					DIM.: Length=1m			SERIAL No.:			
MFR.: OLympia lighting					SUR.:			Shielding Angle:			
ceiling/cavity		0.7	0.7	0.5	0.5	0.3	0.7	0.7	0.5	0.5	0.3
walls		0.5	0.3	0.5	0.3	0.3	0.5	0.3	0.5	0.3	0.3
working plane		0.2	0.2	0.2	0.2	0.2	0.2	0.2	0.2	0.2	0.2
Room dimensions		Viewed crosswise					Viewed endwise				
x = 2H y = 2H		19.7	21.2	20.1	21.5	21.8	19.6	21.1	20.0	21.4	21.7
		21.4	22.8	21.8	23.1	23.5	21.3	22.7	21.7	23.0	23.3
		22.2	23.5	22.6	23.8	24.2	22.0	23.4	22.4	23.7	24.0
		22.9	24.1	23.3	24.4	24.8	22.7	23.9	23.1	24.2	24.6
		23.1	24.3	23.5	24.7	25.1	22.9	24.1	23.3	24.5	24.8
		23.4	24.5	23.8	24.9	25.3	23.1	24.2	23.5	24.6	25.0
4H	2H	20.4	21.7	20.7	22.0	22.3	20.3	21.6	20.7	21.9	22.3
	3H	22.3	23.4	22.7	23.8	24.2	22.2	23.3	22.6	23.7	24.1
	4H	23.2	24.2	23.6	24.6	25.1	23.0	24.1	23.5	24.5	24.9
	6H	24.0	24.9	24.5	25.4	25.8	23.8	24.7	24.3	25.2	25.6
	8H	24.3	25.2	24.8	25.7	26.1	24.1	25.0	24.6	25.4	25.9
	12H	24.6	25.4	25.1	25.9	26.4	24.4	25.2	24.9	25.6	26.1
8H	4H	23.5	24.4	24.0	24.8	25.3	23.4	24.3	23.9	24.7	25.2
	6H	24.5	25.3	25.0	25.7	26.3	24.3	25.1	24.9	25.6	26.1
	8H	25.0	25.6	25.5	26.1	26.7	24.8	25.4	25.3	25.9	26.5
	12H	25.4	26.0	26.0	26.5	27.1	25.1	25.7	25.7	26.2	26.8
12H	4H	23.6	24.4	24.1	24.8	25.3	23.4	24.2	23.9	24.7	25.2
	6H	24.6	25.3	25.2	25.8	26.3	24.5	25.1	25.0	25.6	26.1
	8H	25.1	25.7	25.7	26.2	26.8	24.9	25.5	25.5	26.0	26.6
Variations with the observer position at spacings(CIE Pub.117):											
S = 1.0H		+ 0.1 / - 0.2					+ 0.1 / - 0.2				
1.5H		+ 0.2 / - 0.3					+ 0.2 / - 0.3				
2.0H		+ 0.1 / - 0.3					+ 0.1 / - 0.3				

CIE Pub.117, 96.92 lm Total Lamp Luminous Flux Correct (8log(F/F0) = -8.1)
Area: 0.022 m2

C Range: 0 - 360DEG
C Interval: 30.0DEG
Test Speed: HIGH
Temperature:25.3℃
Operators:
Test Date:2025-04-28

γ Range: 0 - 180DEG
γ Interval: 1.0DEG
Test System:EVERFINE GO-2000B_V1 SYSTEM V2.00.488
Humidity:65.0%
Test Distance:6.360m [K=1.0000]
Remarks:

UTILIZATION FACTORS TABLE

Test:U:24.00V I:0.6154A P:14.77W PF:1.000 Freq:0Hz Lamp Flux:96.9201x1 lm		
NAME: SF33-24V-5050-84-B	TYPE:	WEIGHT:
SPEC.:	DIM.: Length=1m	SERIAL No.:
MFR.: OLympia lighting	SUR.:	Shielding Angle:

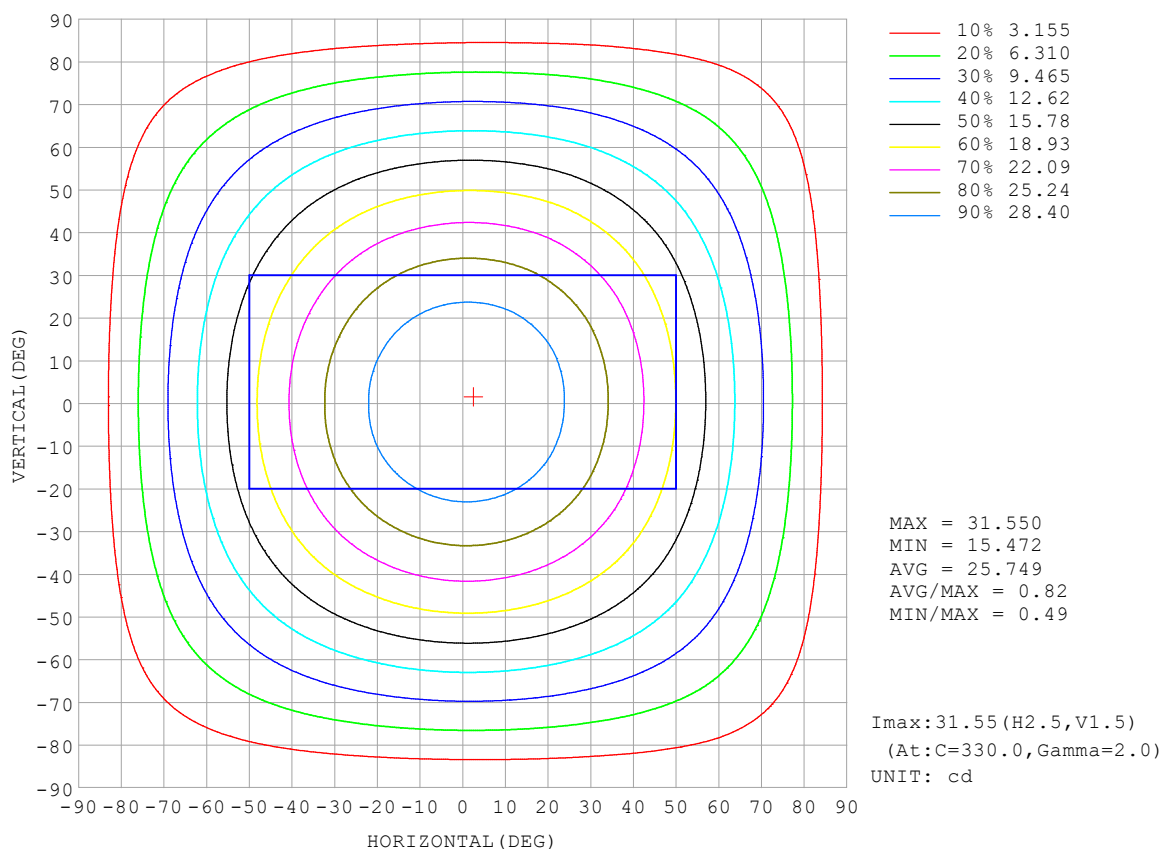
REFLECTANCE										
Ceiling	0.8	0.8	0.8	0.7	0.7	0.7	0.5	0.5	0.5	0
Walls	0.7	0.5	0.3	0.7	0.5	0.3	0.7	0.5	0.3	0
Working plane	0.2	0.2	0.2	0.2	0.2	0.2	0.2	0.2	0.2	0
ROOM INDEX	UTILIZATION FACTORS (PERCENT) $k(RI) \times RCR = 5$									
$k = 0.60$	55	44	37	55	43	37	53	43	36	30
0.80	65	53	46	64	53	46	62	52	45	38
1.00	73	62	54	72	61	54	69	62	53	46
1.25	81	70	62	79	69	62	76	67	61	53
1.50	86	75	68	84	74	67	80	72	66	57
2.00	92	83	77	90	82	76	86	79	74	65
2.50	97	88	82	94	87	81	90	83	78	69
3.00	100	93	87	97	91	85	93	87	83	73
4.00	104	98	93	101	96	91	96	92	88	78
5.00	107	101	97	104	99	95	99	95	91	81
ROOM INDEX	UF (total)									Direct
According to DIN EN 13032-2 2004			Suspended					SHRNOM = 1.25		

C Range: 0 - 360DEG
 C Interval: 30.0DEG
 Test Speed: HIGH
 Temperature: 25.3 °C
 Operators:
 Test Date: 2025-04-28

γ Range: 0 - 180DEG
 γ Interval: 1.0DEG
 Test System: EVERFINE GO-2000B_V1 SYSTEM V2.00.488
 Humidity: 65.0%
 Test Distance: 6.360m [K=1.0000]
 Remarks:

ISOCANDELA DIAGRAM

Test:U:24.00V I:0.6154A P:14.77W PF:1.000 Freq:0Hz Lamp Flux:96.9201x1 lm		
NAME: SF33-24V-5050-84-B	TYPE:	WEIGHT:
SPEC.:	DIM.: Length=1m	SERIAL No.:
MFR.: OLympia lighting	SUR.:	Shielding Angle:

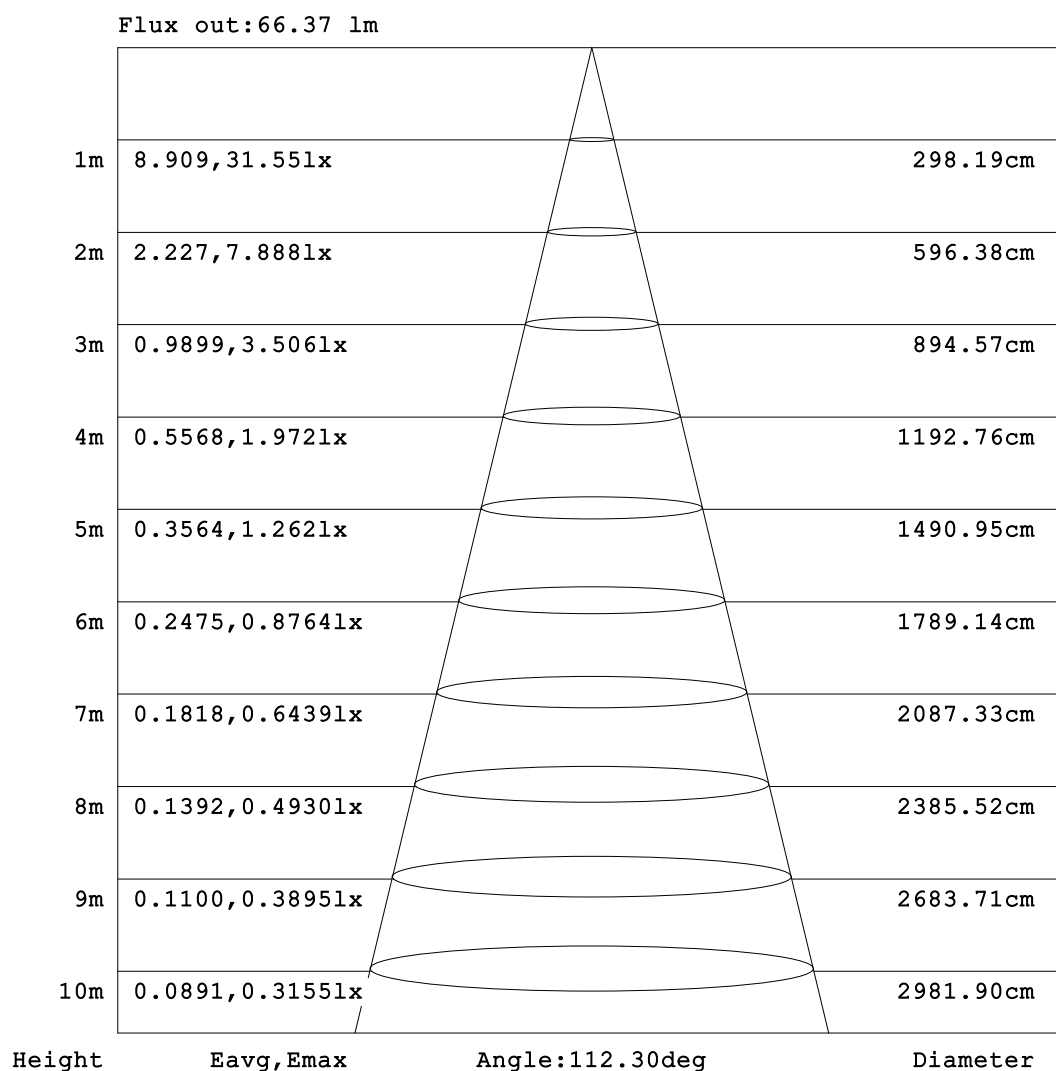


C Range: 0 - 360DEG
C Interval: 30.0DEG
Test Speed: HIGH
Temperature:25.3℃
Operators:
Test Date:2025-04-28

γ Range: 0 - 180DEG
γ Interval: 1.0DEG
Test System:EVERFINE GO-2000B_V1 SYSTEM V2.00.488
Humidity:65.0%
Test Distance:6.360m [K=1.0000]
Remarks:

AAI Figure

Test:U:24.00V I:0.6154A P:14.77W PF:1.000 Freq:0Hz Lamp Flux:96.9201lx 1m		
NAME: SF33-24V-5050-84-B	TYPE:	WEIGHT:
SPEC.:	DIM.: Length=1m	SERIAL No.:
MFR.: OLympia lighting	SUR.:	Shielding Angle:



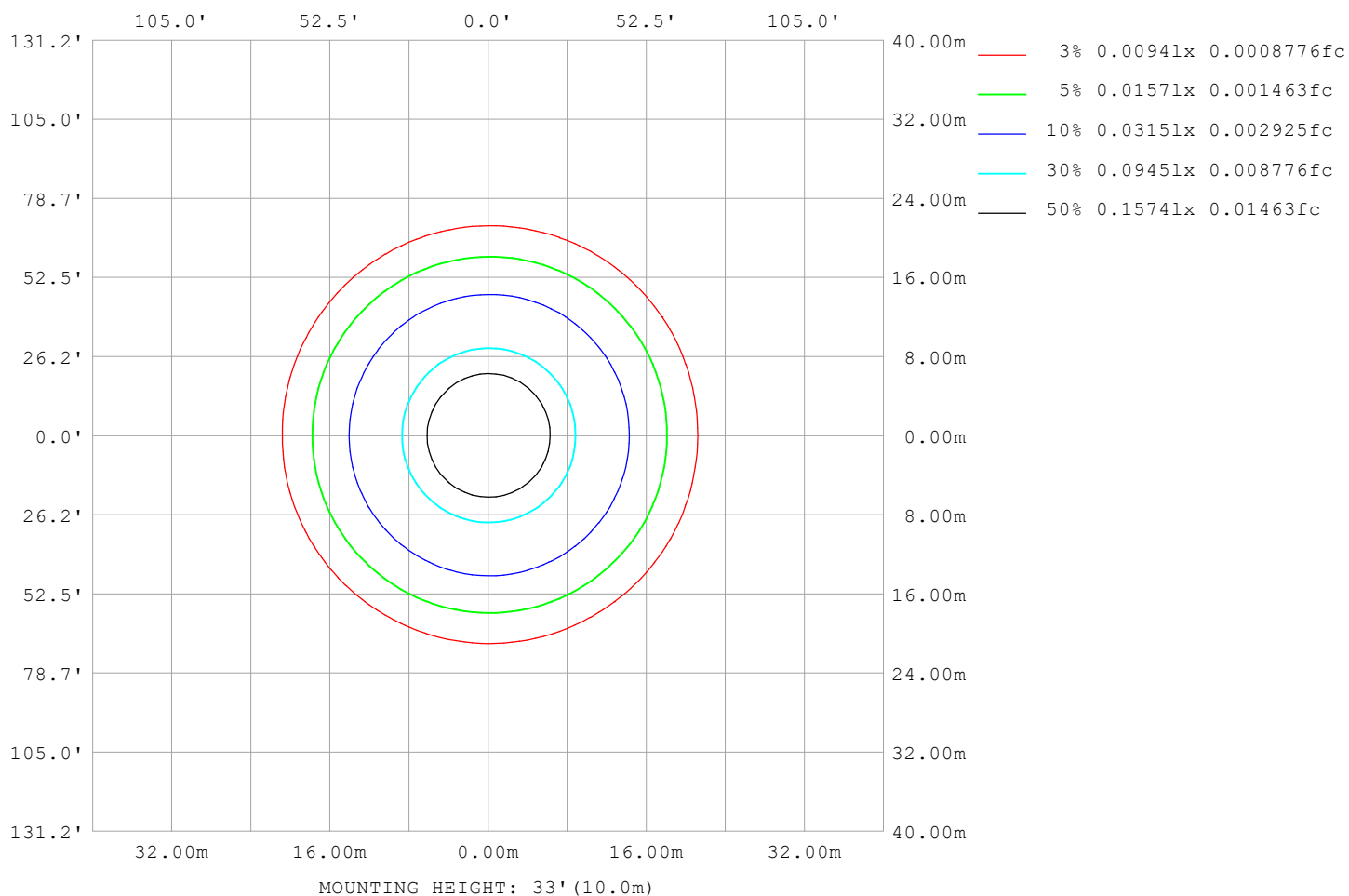
Note:The Curves indicate the illuminated area and the average illumination when the luminaire is at different distance.

C Range: 0 - 360DEG
C Interval: 30.0DEG
Test Speed: HIGH
Temperature:25.3℃
Operators:
Test Date:2025-04-28

γ Range: 0 - 180DEG
γ Interval: 1.0DEG
Test System:EVERFINE GO-2000B_V1 SYSTEM V2.00.488
Humidity:65.0%
Test Distance:6.360m [K=1.0000]
Remarks:

ISOLUX DIAGRAM

Test:U:24.00V I:0.6154A P:14.77W PF:1.000 Freq:0Hz Lamp Flux:96.9201x1 lm		
NAME: SF33-24V-5050-84-B	TYPE:	WEIGHT:
SPEC.:	DIM.: Length=1m	SERIAL No.:
MFR.: OLympia lighting	SUR.:	Shielding Angle:



C Range: 0 - 360DEG
C Interval: 30.0DEG
Test Speed: HIGH
Temperature: 25.3°C
Operators:
Test Date: 2025-04-28

γ Range: 0 - 180DEG
γ Interval: 1.0DEG
Test System: EVERFINE GO-2000B_V1 SYSTEM V2.00.488
Humidity: 65.0%
Test Distance: 6.360m [K=1.0000]
Remarks:

LED Avg.L Report

Test:U:24.00V I:0.6154A P:14.77W PF:1.000 Freq:0Hz Lamp Flux:96.9201x1 lm		
NAME: SF33-24V-5050-84-B	TYPE:	WEIGHT:
SPEC.:	DIM.: Length=1m	SERIAL No.:
MFR.: OLympia lighting	SUR.:	Shielding Angle:

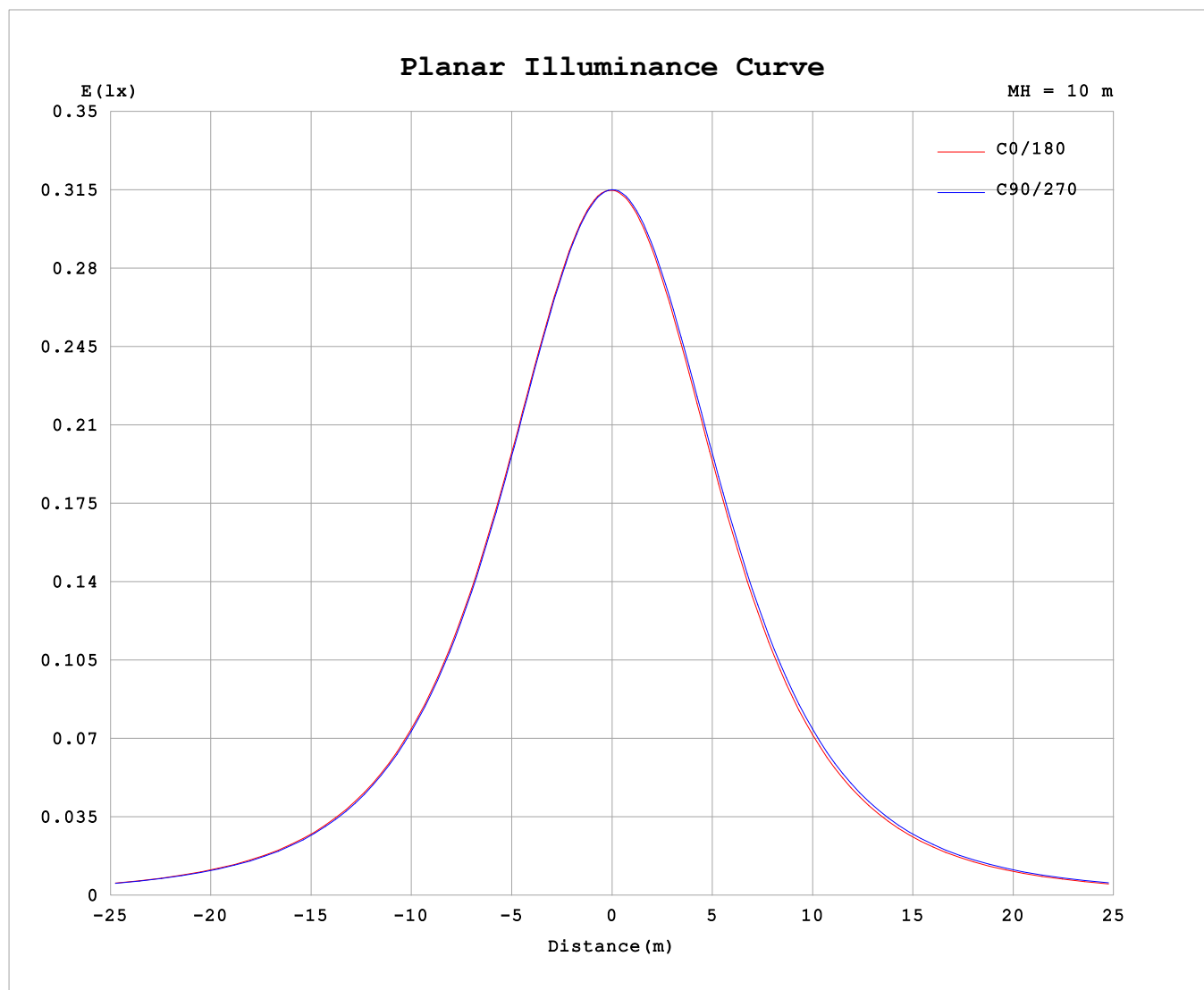
AvgL	cd/m2
L_0~180 (65) av	1256
L_0~180 (75) av	1240
L_0~180 (85) av	1351
L_90~270 (65) av	1278
L_90~270 (75) av	1276
L_90~270 (85) av	1394
L_45 (65) av	1272
L_45 (75) av	1265
L_45 (85) av	1383

Standard: GB/T 29293-2012

C Range: 0 - 360DEG
C Interval: 30.0DEG
Test Speed: HIGH
Temperature:25.3℃
Operators:
Test Date:2025-04-28

γ Range: 0 - 180DEG
γ Interval: 1.0DEG
Test System:EVERFINE GO-2000B_V1 SYSTEM V2.00.488
Humidity:65.0%
Test Distance:6.360m [K=1.0000]
Remarks:

Planar Illuminance Curve



C Range: 0 - 360DEG
C Interval: 30.0DEG
Test Speed: HIGH
Temperature: 25.3 °C
Operators:
Test Date: 2025-04-28

γ Range: 0 - 180DEG
 γ Interval: 1.0DEG
Test System: EVERFINE GO-2000B_V1 SYSTEM V2.00.488
Humidity: 65.0%
Test Distance: 6.360m [K=1.0000]
Remarks:

LUMINOUS DISTRIBUTION INTENSITY DATA

Test:U:24.00V I:0.6154A P:14.77W PF:1.000 Freq:0Hz Lamp Flux:96.9201x1 lm											
NAME: SF33-24V-5050-84-B						TYPE:			WEIGHT:		
SPEC.:						DIM.: Length=1m			SERIAL No.:		
MFR.: Olym pia lighting						SUR.:			Shielding Angle:		

Table--1

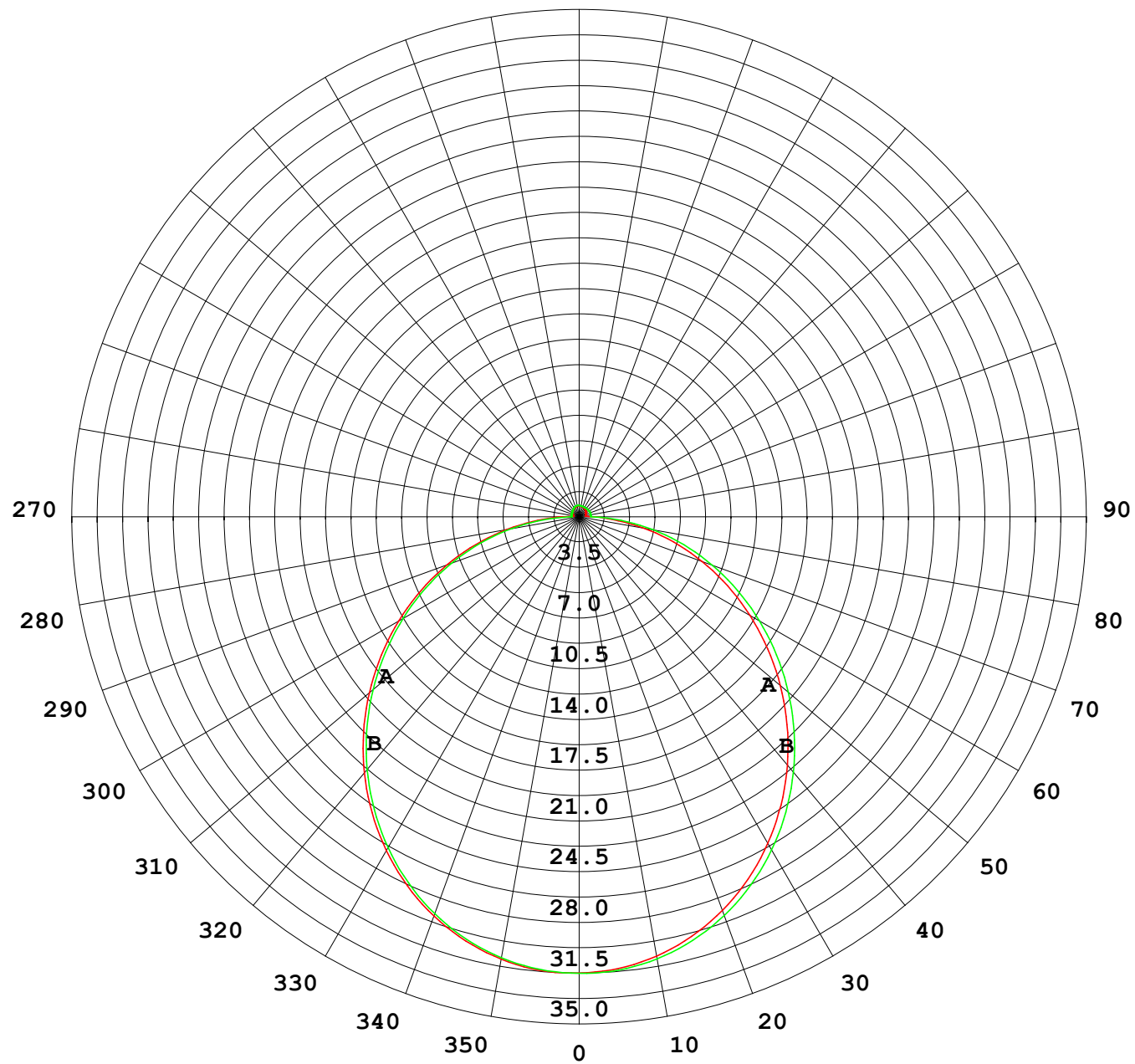
UNIT: cd

C (DEG) γ (DEG)	0	30	60	90	120	150	180	210	240	270	300	330							
0	31.5	31.5	31.5	31.5	31.5	31.5	31.5	31.5	31.5	31.5	31.5	31.5							
5	31.4	31.4	31.4	31.3	31.3	31.3	31.3	31.3	31.3	31.4	31.4	31.4							
10	31.0	31.0	31.0	30.9	30.9	30.8	30.8	30.8	30.9	31.0	31.0	31.1							
15	30.3	30.3	30.3	30.2	30.1	30.0	30.0	30.1	30.2	30.3	30.3	30.4							
20	29.3	29.3	29.3	29.1	29.0	28.9	28.9	29.0	29.1	29.3	29.4	29.4							
25	28.1	28.1	28.0	27.9	27.7	27.6	27.6	27.7	27.9	28.0	28.2	28.2							
30	26.6	26.6	26.5	26.4	26.2	26.1	26.0	26.1	26.4	26.6	26.7	26.7							
35	24.9	24.9	24.8	24.7	24.5	24.3	24.3	24.4	24.7	24.9	25.0	25.1							
40	23.1	23.1	22.9	22.8	22.5	22.4	22.4	22.5	22.8	23.0	23.2	23.2							
45	21.0	21.0	20.9	20.7	20.5	20.4	20.3	20.4	20.8	21.0	21.2	21.2							
50	18.9	18.9	18.7	18.6	18.3	18.2	18.1	18.3	18.6	18.8	19.1	19.1							
55	16.7	16.7	16.5	16.3	16.1	16.0	15.9	16.0	16.4	16.6	16.9	16.8							
60	14.4	14.4	14.2	14.0	13.8	13.7	13.6	13.8	14.1	14.4	14.6	14.5							
65	12.0	12.0	11.8	11.7	11.5	11.4	11.3	11.5	11.8	12.1	12.3	12.2							
70	9.70	9.70	9.50	9.36	9.21	9.07	9.04	9.21	9.54	9.77	9.95	9.89							
75	7.36	7.37	7.17	7.05	6.91	6.79	6.76	6.93	7.25	7.48	7.63	7.56							
80	5.05	5.05	4.85	4.74	4.62	4.52	4.51	4.67	4.98	5.18	5.32	5.24							
85	2.87	2.82	2.56	2.45	2.33	2.31	2.31	2.43	2.71	2.90	3.04	2.99							
90	1.21	1.12	0.79	0.55	0.85	1.04	1.05	1.12	1.01	0.83	1.12	1.26							
95	0.43	0.48	0.52	0.57	0.62	0.59	0.52	0.63	0.73	0.81	0.71	0.51							
100	0.43	0.51	0.52	0.56	0.61	0.58	0.44	0.57	0.73	0.81	0.72	0.50							
105	0.46	0.54	0.52	0.56	0.62	0.60	0.46	0.57	0.74	0.81	0.72	0.52							
110	0.50	0.56	0.51	0.57	0.64	0.63	0.49	0.57	0.74	0.81	0.72	0.54							
115	0.53	0.59	0.51	0.58	0.65	0.65	0.51	0.59	0.75	0.81	0.72	0.56							
120	0.55	0.61	0.52	0.59	0.66	0.67	0.54	0.61	0.75	0.80	0.72	0.58							
125	0.59	0.64	0.54	0.61	0.68	0.69	0.57	0.62	0.75	0.79	0.72	0.59							
130	0.61	0.64	0.60	0.63	0.70	0.71	0.59	0.64	0.75	0.78	0.72	0.61							
135	0.64	0.65	0.64	0.65	0.71	0.72	0.62	0.65	0.75	0.77	0.72	0.61							
140	0.66	0.67	0.67	0.67	0.73	0.74	0.64	0.67	0.75	0.77	0.72	0.61							
145	0.67	0.68	0.68	0.70	0.75	0.76	0.67	0.68	0.76	0.76	0.72	0.63							
150	0.69	0.70	0.69	0.74	0.76	0.77	0.70	0.70	0.76	0.76	0.72	0.64							
155	0.72	0.72	0.72	0.77	0.77	0.79	0.72	0.71	0.77	0.76	0.74	0.66							
160	0.74	0.74	0.73	0.79	0.78	0.80	0.74	0.73	0.77	0.76	0.74	0.68							
165	0.75	0.75	0.74	0.80	0.79	0.80	0.74	0.75	0.78	0.76	0.75	0.70							
170	0.75	0.77	0.75	0.80	0.80	0.80	0.74	0.76	0.79	0.77	0.77	0.74							
175	0.75	0.77	0.77	0.80	0.80	0.80	0.74	0.77	0.79	0.78	0.79	0.74							
180	0.75	0.77	0.79	0.80	0.80	0.80	0.74	0.77	0.79	0.79	0.79	0.78							

C Range: 0 - 360DEG
C Interval: 30.0DEG
Test Speed: HIGH
Temperature:25.3℃
Operators:
Test Date:2025-04-28

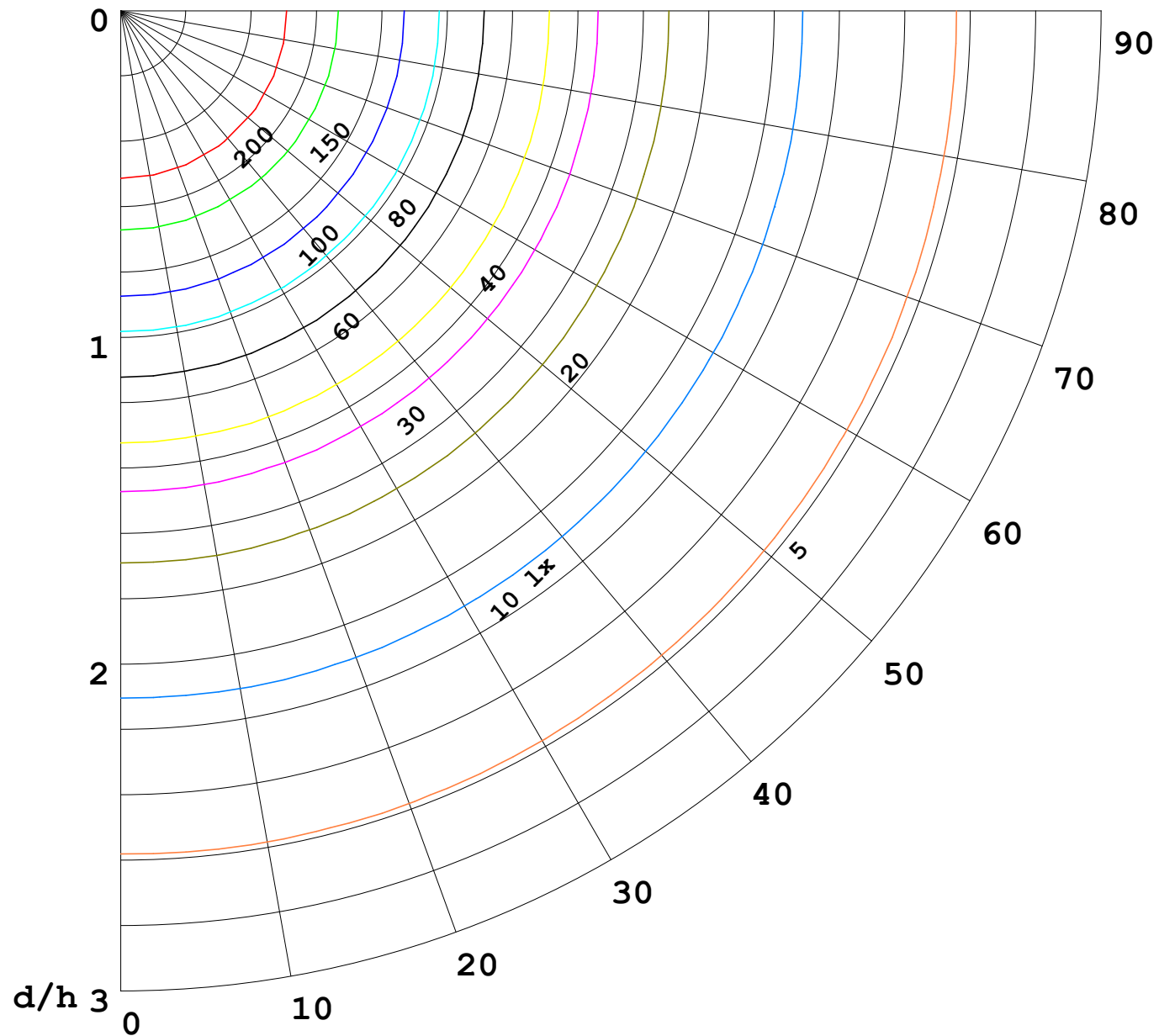
γ Range: 0 - 180DEG
γ Interval: 1.0DEG
Test System:EVERFINE GO-2000B_V1 SYSTEM V2.00.488
Humidity:65.0%
Test Distance:6.360m [K=1.0000]
Remarks:

I (cd)



1000 lm

$\kappa = 1$



F = 1000 lm
 K = 0.7
 Hcc = 0.8 m
 Hfc = 0.0 m
 Eave = 100 lx

	Pcc	Pw	Pfc
————	70	50	30
————	50	30	20

