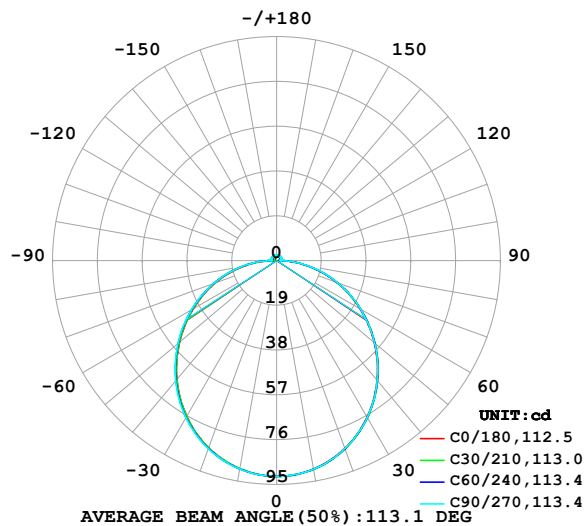


LUMINAIRE PHOTOMETRIC TEST REPORT

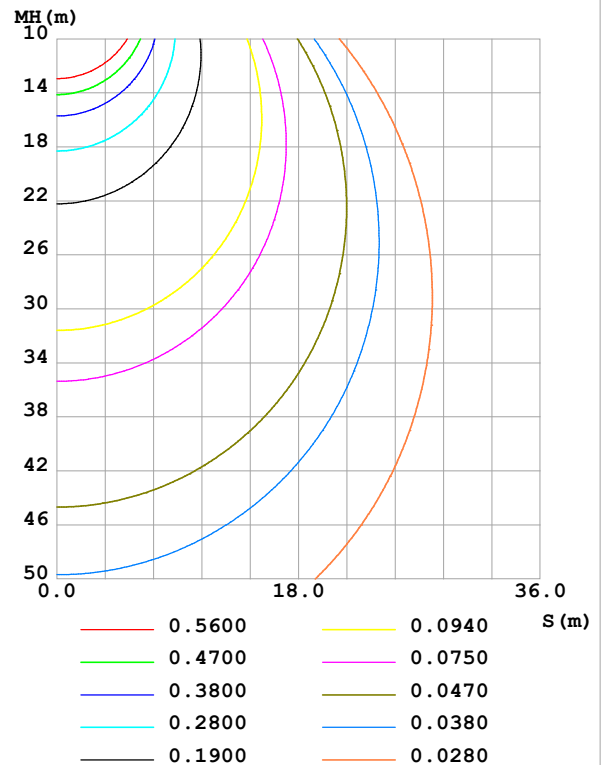
Test:U:24.00V I:0.5965A P:14.32W PF:1.000 Freq:0Hz Lamp Flux:282.895x1 lm		
NAME: SF33-24V-5050-84-R	TYPE:	WEIGHT:
SPEC.:	DIM.: Length=1m	SERIAL No.:
MFR.: OLympia lighting	SUR.:	Shielding Angle:

DATA OF LAMP		PHOTOMETRIC DATA				Eff: 19.76 lm/W
MODEL	5050	I _{max} (cd)	91.53	S/MH(C0/180)	1.24	
NOMINAL POWER(W)	15	LOR(%)	100.0	S/MH(C90/270)	1.25	
RATED VOLTAGE(V)	24	TOTAL FLUX(lm)	282.89	η UP,DN(C0-180)	2.1,47.5	
NOMINAL FLUX(lm)	282.895	CIE CLASS	DIRECT	η UP,DN(C180-360)	2.3,48.0	
LAMPS INSIDE	1	η up (%)	4.5	CIBSE SHR NOM	1.25	
TEST VOLTAGE(V)		η down (%)	95.5	CIBSE SHR MAX	1.35	

LUMINOUS INTENSITY DISTRIBUTION DIAGRAM



C0 PLANE ISOLUX DIAGRAM (UNIT:lx)



C Range: 0 - 360DEG
C Interval: 30.0DEG
Test Speed: HIGH
Temperature: 25.3 °C
Operators:
Test Date: 2025-04-28

γ Range: 0 - 180DEG
γ Interval: 1.0DEG
Test System: EVERFINE GO-2000B_V1 SYSTEM V2.00.488
Humidity: 65.0%
Test Distance: 6.360m [K=1.0000]
Remarks:

ZONAL FLUX DIAGRAM

ZONAL FLUX DIAGRAM:

γ	C0	C45	C90	C135	C180	C225	C270	C315	γ	Φ zone	Φ total	%lum, lamp
10	89.83	89.95	89.89	89.71	89.72	89.72	89.84	89.96	0- 10	8.656	8.656	3.06,3.06
20	84.77	84.98	84.87	84.58	84.46	84.65	84.90	85.06	10- 20	24.75	33.40	11.8,11.8
30	76.81	77.03	76.92	76.50	76.32	76.60	76.96	77.21	20- 30	37.39	70.79	25,25
40	66.32	66.61	66.49	66.07	65.81	66.19	66.62	66.92	30- 40	44.95	115.7	40.9,40.9
50	54.08	54.43	54.31	53.99	53.73	54.19	54.64	54.86	40- 50	46.69	162.4	57.4,57.4
60	40.81	41.18	41.12	40.98	40.81	41.34	41.71	41.76	50- 60	42.79	205.2	72.5,72.5
70	27.12	27.49	27.53	27.65	27.61	28.22	28.46	28.22	60- 70	34.21	239.4	84.6,84.6
80	13.49	13.78	13.91	13.96	14.35	15.04	15.17	14.61	70- 80	22.23	261.7	92.5,92.5
90	2.259	2.123	1.641	2.236	2.782	3.160	2.556	2.786	80- 90	8.597	270.3	95.5,95.5
100	1.287	1.599	1.740	1.608	1.152	2.017	2.512	1.921	90-100	1.965	272.2	96.2,96.2
110	1.476	1.749	1.914	1.946	1.397	2.113	2.547	2.015	100-110	1.941	274.2	96.9,96.9
120	1.656	1.892	2.085	2.061	1.563	2.145	2.509	2.058	110-120	1.949	276.1	97.6,97.6
130	1.811	2.017	2.196	2.154	1.718	2.167	2.448	2.097	120-130	1.836	277.9	98.3,98.3
140	1.952	2.120	2.285	2.234	1.882	2.209	2.396	2.118	130-140	1.642	279.6	98.8,98.8
150	2.090	2.205	2.364	2.307	2.042	2.266	2.375	2.152	140-150	1.375	281.0	99.3,99.3
160	2.216	2.289	2.407	2.364	2.200	2.312	2.387	2.231	150-160	1.047	282.0	99.7,99.7
170	2.281	2.368	2.422	2.401	2.296	2.352	2.387	2.333	160-170	0.6595	282.7	99.9,99.9
180	2.335	2.402	2.422	2.410	2.363	2.400	2.404	2.407	170-180	0.2265	282.9	100,100
DEG	LUMINOUS INTENSITY:cd									UNIT:lm		

Conical surface Flux(90deg): 139.24 lm

%lum = 49.2%

%lamp = 49.2%

Conical surface Flux(130deg): 223.64 lm

%lum = 79.1%

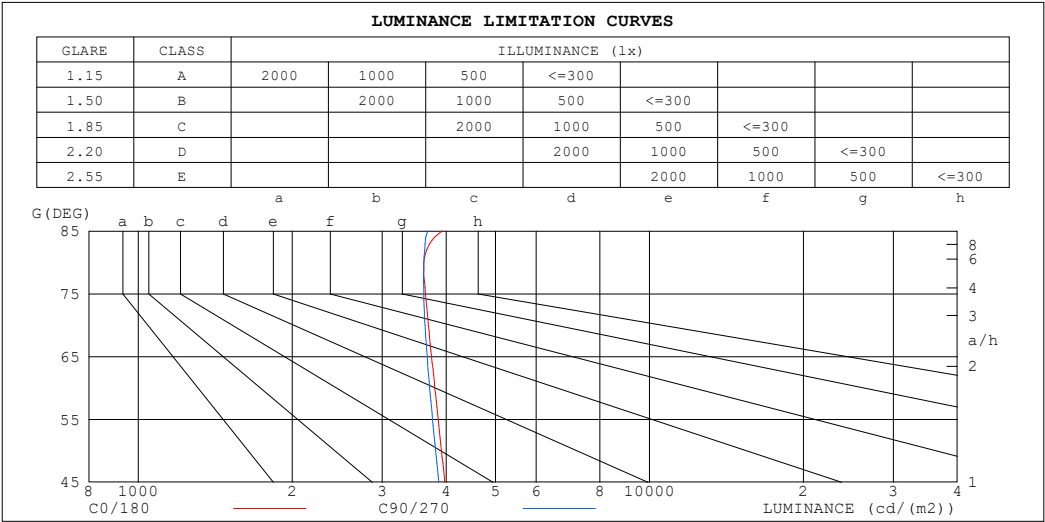
%lamp = 79.1%

C Range: 0 - 360DEG
 C Interval: 30.0DEG
 Test Speed: HIGH
 Temperature:25.3℃
 Operators:
 Test Date:2025-04-28

γ Range: 0 - 180DEG
 γ Interval: 1.0DEG
 Test System:EVERFINE GO-2000B_V1 SYSTEM V2.00.488
 Humidity:65.0%
 Test Distance:6.360m [K=1.0000]
 Remarks:

LUMINANCE LIMITATION CURVES

Test:U:24.00V I:0.5965A P:14.32W PF:1.000 Freq:0Hz Lamp Flux:282.895x1 lm		
NAME: SF33-24V-5050-84-R	TYPE:	WEIGHT:
SPEC.:	DIM.: Length=1m	SERIAL No.:
MFR.: OLympia lighting	SUR.:	Shielding Angle:



LUMINANCE cd/(m2)		
G (DEG)	C0/180	C90/270
85	3927	3681
80	3620	3620
75	3646	3619
70	3694	3637
65	3748	3673
60	3802	3716
55	3859	3764
50	3919	3817
45	3976	3869

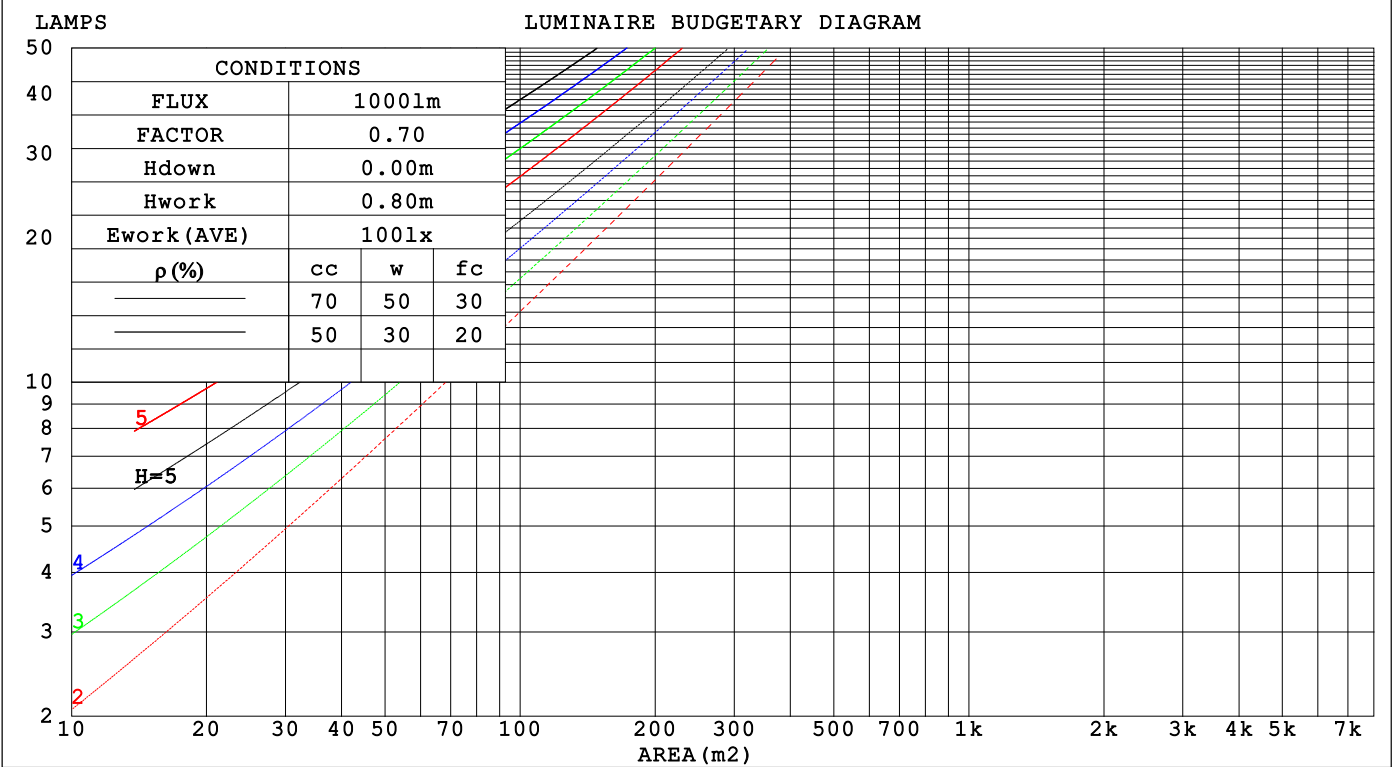
C Range: 0 - 360DEG
C Interval: 30.0DEG
Test Speed: HIGH
Temperature:25.3℃
Operators:
Test Date:2025-04-28

γ Range: 0 - 180DEG
γ Interval: 1.0DEG
Test System:EVERFINE GO-2000B_V1 SYSTEM V2.00.488
Humidity:65.0%
Test Distance:6.360m [K=1.0000]
Remarks:

CU AND LUMINAIRE BUDGETARY ESTIMATE DIAGRAM

Test:U:24.00V I:0.5965A P:14.32W PF:1.000 Freq:0Hz		
Lamp Flux:282.895x1 lm		
NAME: SF33-24V-5050-84-R	TYPE:	WEIGHT:
SPEC.:	DIM.: Length=1m	SERIAL No.:
MFR.: OLYMPIA lighting	SUR.:	Shielding Angle:

pcc	80%			70%			50%			30%			10%			0
pw	50%	30%	10%	50%	30%	10%	50%	30%	10%	50%	30%	10%	50%	30%	10%	0
pfc	20%			20%			20%			20%			20%			0
RCR	RCR:Room Cavity Ratio															



C Range: 0 - 360DEG
C Interval: 30.0DEG
Test Speed: HIGH
Temperature:25.3℃
Operators:
Test Date:2025-04-28

γ Range: 0 - 180DEG
γ Interval: 1.0DEG
Test System:EVERFINE GO-2000B_V1 SYSTEM V2.00.488
Humidity:65.0%
Test Distance:6.360m [K=1.0000]
Remarks:

WEC AND CCEC

Test:U:24.00V I:0.5965A P:14.32W PF:1.000 Freq:0Hz Lamp Flux:282.895x1 lm					
NAME: SF33-24V-5050-84-R			TYPE:		WEIGHT:
SPEC.:			DIM.: Length=1m		SERIAL No.:
MFR.: OLympia lighting			SUR.:		Shielding Angle:

pcc	80%			70%			50%			30%			10%			0														
pw	50%	30%	10%	50%	30%	10%	50%	30%	10%	50%	30%	10%	50%	30%	10%	0														
pfc	20%			20%			20%			20%			20%			0														
RCR	RCR:Room Cavity Ratio															Wall Exitance Coefficients(WEC)														
0.0																														
1.0	.327	.186	.059	.318	.182	.058	.303	.174	.055	.288	.166	.053	.274	.159	.051															
2.0	.301	.165	.051	.294	.162	.050	.280	.156	.048	.267	.150	.047	.255	.144	.045															
3.0	.276	.147	.044	.269	.144	.043	.257	.139	.042	.245	.134	.041	.234	.130	.040															
4.0	.253	.132	.039	.247	.129	.038	.236	.125	.037	.225	.121	.037	.216	.117	.036															
5.0	.233	.119	.034	.228	.117	.034	.218	.113	.033	.208	.110	.033	.199	.107	.032															
6.0	.215	.108	.031	.211	.106	.031	.202	.103	.030	.193	.100	.029	.185	.097	.029															
7.0	.200	.099	.028	.196	.097	.028	.188	.095	.027	.180	.092	.027	.173	.090	.026															
8.0	.186	.091	.026	.183	.090	.025	.175	.088	.025	.168	.085	.025	.162	.083	.024															
9.0	.175	.084	.024	.171	.083	.023	.164	.081	.023	.158	.079	.023	.152	.077	.022															
10.0	.164	.079	.022	.161	.078	.022	.155	.076	.021	.149	.074	.021	.143	.072	.021															

pcc	80%			70%			50%			30%			10%			0
pw	50%	30%	10%	50%	30%	10%	50%	30%	10%	50%	30%	10%	50%	30%	10%	0
pfc	20%			20%			20%			20%			20%			0
RCR	RCR:Room Cavity Ratio						Ceiling Cavity Exitance Coefficients (CCEC)									
0.0	.225	.225	.225	.192	.192	.192	.131	.131	.131	.075	.075	.075	.024	.024	.024	
1.0	.216	.190	.167	.185	.163	.144	.126	.112	.100	.073	.065	.058	.023	.021	.019	
2.0	.208	.166	.131	.178	.143	.114	.122	.099	.079	.070	.058	.046	.023	.019	.015	
3.0	.200	.149	.108	.172	.129	.094	.118	.089	.066	.068	.052	.039	.022	.017	.013	
4.0	.193	.136	.093	.165	.117	.080	.114	.082	.057	.066	.048	.034	.021	.016	.011	
5.0	.185	.126	.082	.159	.109	.071	.110	.076	.050	.063	.045	.030	.020	.015	.010	
6.0	.178	.117	.074	.153	.102	.064	.106	.071	.046	.061	.042	.027	.020	.014	.009	
7.0	.171	.111	.068	.147	.096	.059	.102	.067	.042	.059	.040	.025	.019	.013	.008	
8.0	.165	.105	.064	.142	.091	.056	.098	.064	.040	.057	.038	.024	.018	.012	.008	
9.0	.158	.100	.060	.136	.087	.053	.095	.061	.037	.055	.036	.022	.018	.012	.007	
10.0	.153	.096	.058	.132	.083	.050	.091	.058	.036	.053	.035	.021	.017	.011	.007	

C Range: 0 - 360DEG
C Interval: 30.0DEG
Test Speed: HIGH
Temperature:25.3℃
Operators:
Test Date:2025-04-28

γ Range: 0 - 180DEG
γ Interval: 1.0DEG
Test System:EVERFINE GO-2000B_V1 SYSTEM V2.00.488
Humidity:65.0%
Test Distance:6.360m [K=1.0000]
Remarks:

UGR(Unified Glare Rating) Table

Test:U:24.00V I:0.5965A P:14.32W PF:1.000 Freq:0Hz Lamp Flux:282.895x1 lm											
NAME: SF33-24V-5050-84-R					TYPE:			WEIGHT:			
SPEC.:					DIM.: Length=1m			SERIAL No.:			
MFR.: OLympia lighting					SUR.:			Shielding Angle:			
ceiling/cavity	0.7	0.7	0.5	0.5	0.3	0.7	0.7	0.5	0.5	0.3	
walls	0.5	0.3	0.5	0.3	0.3	0.5	0.3	0.5	0.3	0.3	
working plane	0.2	0.2	0.2	0.2	0.2	0.2	0.2	0.2	0.2	0.2	
Room dimensions		Viewed crosswise					Viewed endwise				
x = 2H y = 2H	2H	19.7	21.2	20.1	21.5	21.8	19.6	21.1	19.9	21.4	21.7
	3H	21.4	22.8	21.8	23.1	23.4	21.3	22.7	21.7	23.0	23.3
	4H	22.1	23.4	22.5	23.8	24.1	22.0	23.3	22.4	23.7	24.0
	6H	22.7	24.0	23.1	24.3	24.7	22.6	23.9	23.0	24.2	24.6
	8H	23.0	24.1	23.4	24.5	24.9	22.9	24.1	23.3	24.4	24.8
	12H	23.2	24.3	23.6	24.7	25.1	23.1	24.2	23.5	24.6	25.0
4H	2H	20.3	21.6	20.7	22.0	22.3	20.3	21.6	20.6	21.9	22.2
	3H	22.2	23.4	22.6	23.7	24.1	22.1	23.3	22.6	23.7	24.1
	4H	23.1	24.1	23.5	24.5	25.0	23.0	24.1	23.5	24.5	24.9
	6H	23.8	24.8	24.3	25.2	25.7	23.8	24.7	24.2	25.1	25.6
	8H	24.1	25.0	24.6	25.5	25.9	24.1	24.9	24.6	25.4	25.9
	12H	24.4	25.2	24.9	25.7	26.2	24.3	25.1	24.8	25.6	26.1
8H	4H	23.4	24.3	23.9	24.7	25.2	23.3	24.2	23.8	24.7	25.1
	6H	24.4	25.1	24.9	25.6	26.1	24.3	25.0	24.8	25.5	26.0
	8H	24.8	25.4	25.3	25.9	26.5	24.7	25.4	25.2	25.9	26.4
	12H	25.1	25.7	25.7	26.2	26.8	25.1	25.6	25.6	26.1	26.7
12H	4H	23.4	24.2	23.9	24.7	25.2	23.4	24.2	23.9	24.6	25.1
	6H	24.4	25.1	25.0	25.6	26.1	24.4	25.0	24.9	25.5	26.1
	8H	24.9	25.5	25.5	26.0	26.6	24.9	25.4	25.4	25.9	26.5
Variations with the observer position at spacings(CIE Pub.117):											
S = 1.0H		+ 0.1 / - 0.2					+ 0.1 / - 0.2				
1.5H		+ 0.2 / - 0.3					+ 0.2 / - 0.3				
2.0H		+ 0.1 / - 0.3					+ 0.1 / - 0.3				

CIE Pub.117, 282.9 lm Total Lamp Luminous Flux Correct (8log(F/F0) = -4.4)
Area: 0.022 m2

C Range: 0 - 360DEG
C Interval: 30.0DEG
Test Speed: HIGH
Temperature:25.3℃
Operators:
Test Date:2025-04-28

γ Range: 0 - 180DEG
γ Interval: 1.0DEG
Test System:EVERFINE GO-2000B_V1 SYSTEM V2.00.488
Humidity:65.0%
Test Distance:6.360m [K=1.0000]
Remarks:

UTILIZATION FACTORS TABLE

Test:U:24.00V I:0.5965A P:14.32W PF:1.000 Freq:0Hz Lamp Flux:282.895x1 lm		
NAME: SF33-24V-5050-84-R	TYPE:	WEIGHT:
SPEC.:	DIM.: Length=1m	SERIAL No.:
MFR.: OLympia lighting	SUR.:	Shielding Angle:

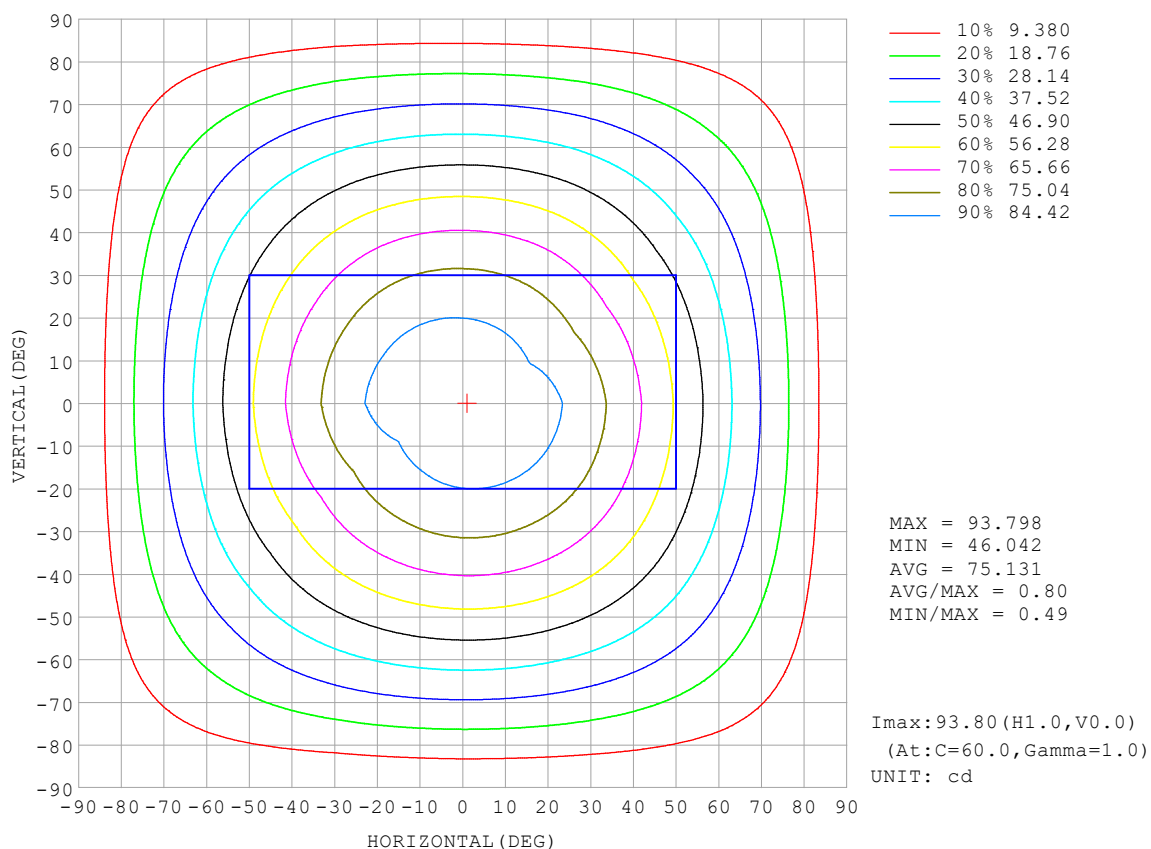
REFLECTANCE										
Ceiling	0.8	0.8	0.8	0.7	0.7	0.7	0.5	0.5	0.5	0
Walls	0.7	0.5	0.3	0.7	0.5	0.3	0.7	0.5	0.3	0
Working plane	0.2	0.2	0.2	0.2	0.2	0.2	0.2	0.2	0.2	0
ROOM INDEX	UTILIZATION FACTORS (PERCENT) $k(RI) \times RCR = 5$									
$k = 0.60$	55	44	37	54	43	36	53	43	36	30
0.80	65	53	46	64	53	46	62	52	45	38
1.00	73	62	54	72	61	54	69	62	53	46
1.25	80	69	62	79	69	61	76	67	60	52
1.50	85	75	68	83	74	67	80	72	66	57
2.00	92	83	76	90	82	76	86	79	74	65
2.50	96	88	82	94	87	81	90	83	78	69
3.00	100	93	87	97	91	85	93	87	83	73
4.00	104	98	93	101	96	91	96	92	88	78
5.00	107	101	97	104	99	95	98	95	91	81
ROOM INDEX	UF (total)									Direct
According to DIN EN 13032-2 2004			Suspended					SHRNOM = 1.25		

C Range: 0 - 360DEG
 C Interval: 30.0DEG
 Test Speed: HIGH
 Temperature: 25.3 °C
 Operators:
 Test Date: 2025-04-28

γ Range: 0 - 180DEG
 γ Interval: 1.0DEG
 Test System: EVERFINE GO-2000B_V1 SYSTEM V2.00.488
 Humidity: 65.0%
 Test Distance: 6.360m [K=1.0000]
 Remarks:

ISOCANDELA DIAGRAM

Test:U:24.00V I:0.5965A P:14.32W PF:1.000 Freq:0Hz Lamp Flux:282.895x1 lm		
NAME: SF33-24V-5050-84-R	TYPE:	WEIGHT:
SPEC.:	DIM.: Length=1m	SERIAL No.:
MFR.: OLympia lighting	SUR.:	Shielding Angle:

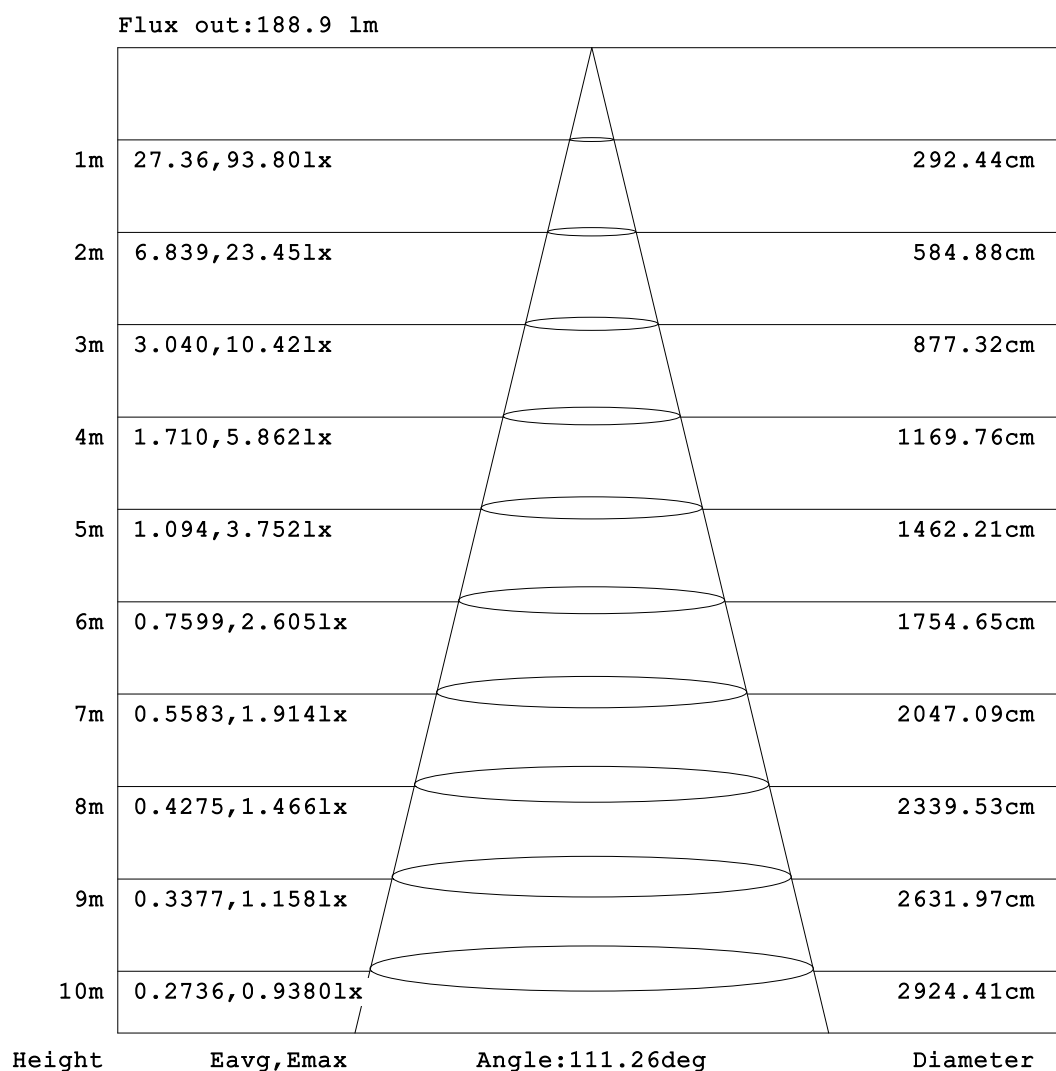


C Range: 0 - 360DEG
C Interval: 30.0DEG
Test Speed: HIGH
Temperature:25.3℃
Operators:
Test Date:2025-04-28

γ Range: 0 - 180DEG
γ Interval: 1.0DEG
Test System:EVERFINE GO-2000B_V1 SYSTEM V2.00.488
Humidity:65.0%
Test Distance:6.360m [K=1.0000]
Remarks:

AAI Figure

Test:U:24.00V I:0.5965A P:14.32W PF:1.000 Freq:0Hz Lamp Flux:282.895x1 lm		
NAME: SF33-24V-5050-84-R	TYPE:	WEIGHT:
SPEC.:	DIM.: Length=1m	SERIAL No.:
MFR.: OLympia lighting	SUR.:	Shielding Angle:



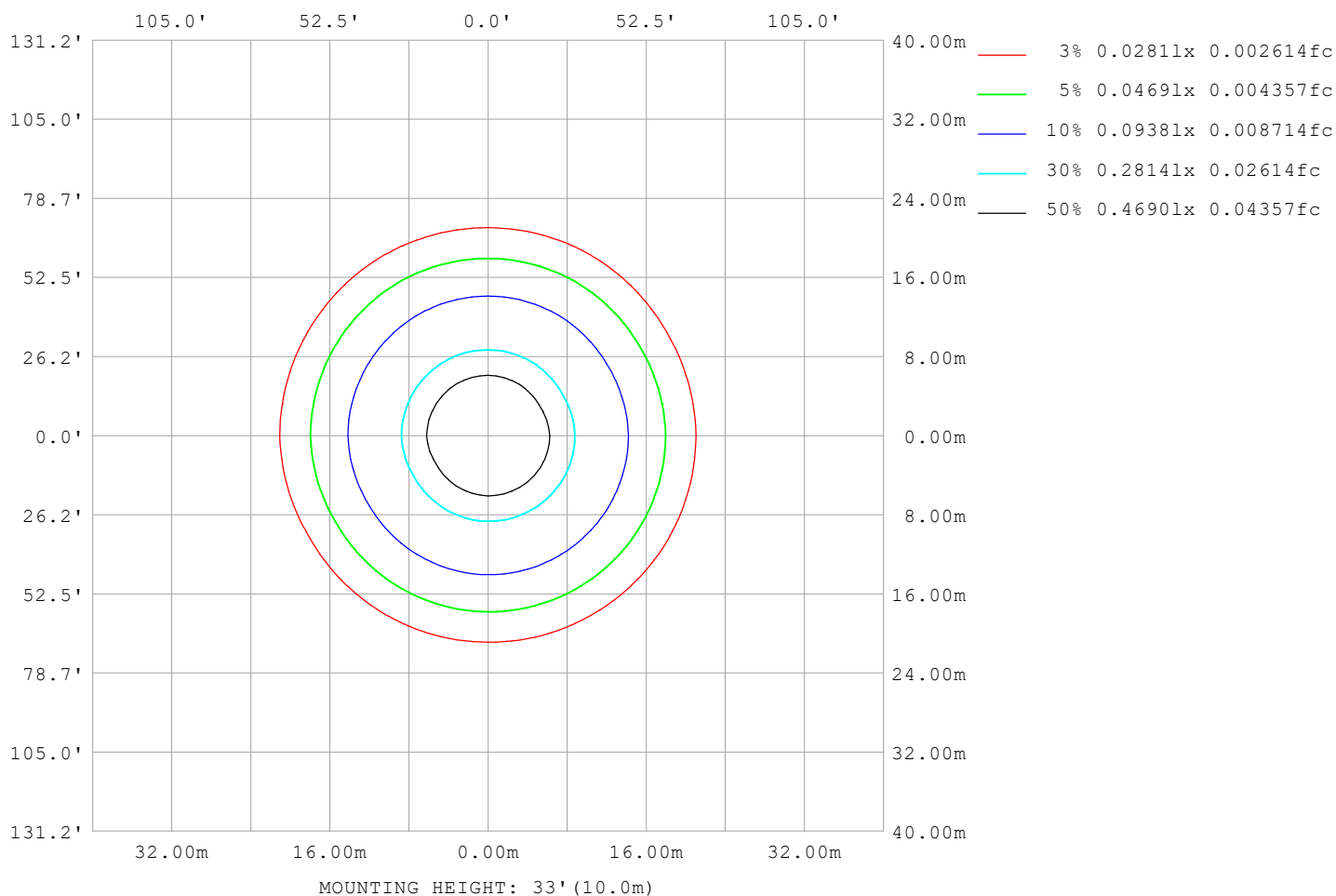
Note: The Curves indicate the illuminated area and the average illumination when the luminaire is at different distance.

C Range: 0 - 360DEG
C Interval: 30.0DEG
Test Speed: HIGH
Temperature: 25.3°C
Operators:
Test Date: 2025-04-28

γ Range: 0 - 180DEG
γ Interval: 1.0DEG
Test System: EVERFINE GO-2000B_V1 SYSTEM V2.00.488
Humidity: 65.0%
Test Distance: 6.360m [K=1.0000]
Remarks:

ISOLUX DIAGRAM

Test:U:24.00V I:0.5965A P:14.32W PF:1.000 Freq:0Hz Lamp Flux:282.895x1 lm		
NAME: SF33-24V-5050-84-R	TYPE:	WEIGHT:
SPEC.:	DIM.: Length=1m	SERIAL No.:
MFR.: OLympia lighting	SUR.:	Shielding Angle:



C Range: 0 - 360DEG
C Interval: 30.0DEG
Test Speed: HIGH
Temperature: 25.3°C
Operators:
Test Date: 2025-04-28

γ Range: 0 - 180DEG
γ Interval: 1.0DEG
Test System: EVERFINE GO-2000B_V1 SYSTEM V2.00.488
Humidity: 65.0%
Test Distance: 6.360m [K=1.0000]
Remarks:

LED Avg.L Report

Test:U:24.00V I:0.5965A P:14.32W PF:1.000 Freq:0Hz Lamp Flux:282.895x1 lm		
NAME: SF33-24V-5050-84-R	TYPE:	WEIGHT:
SPEC.:	DIM.: Length=1m	SERIAL No.:
MFR.: OLympia lighting	SUR.:	Shielding Angle:

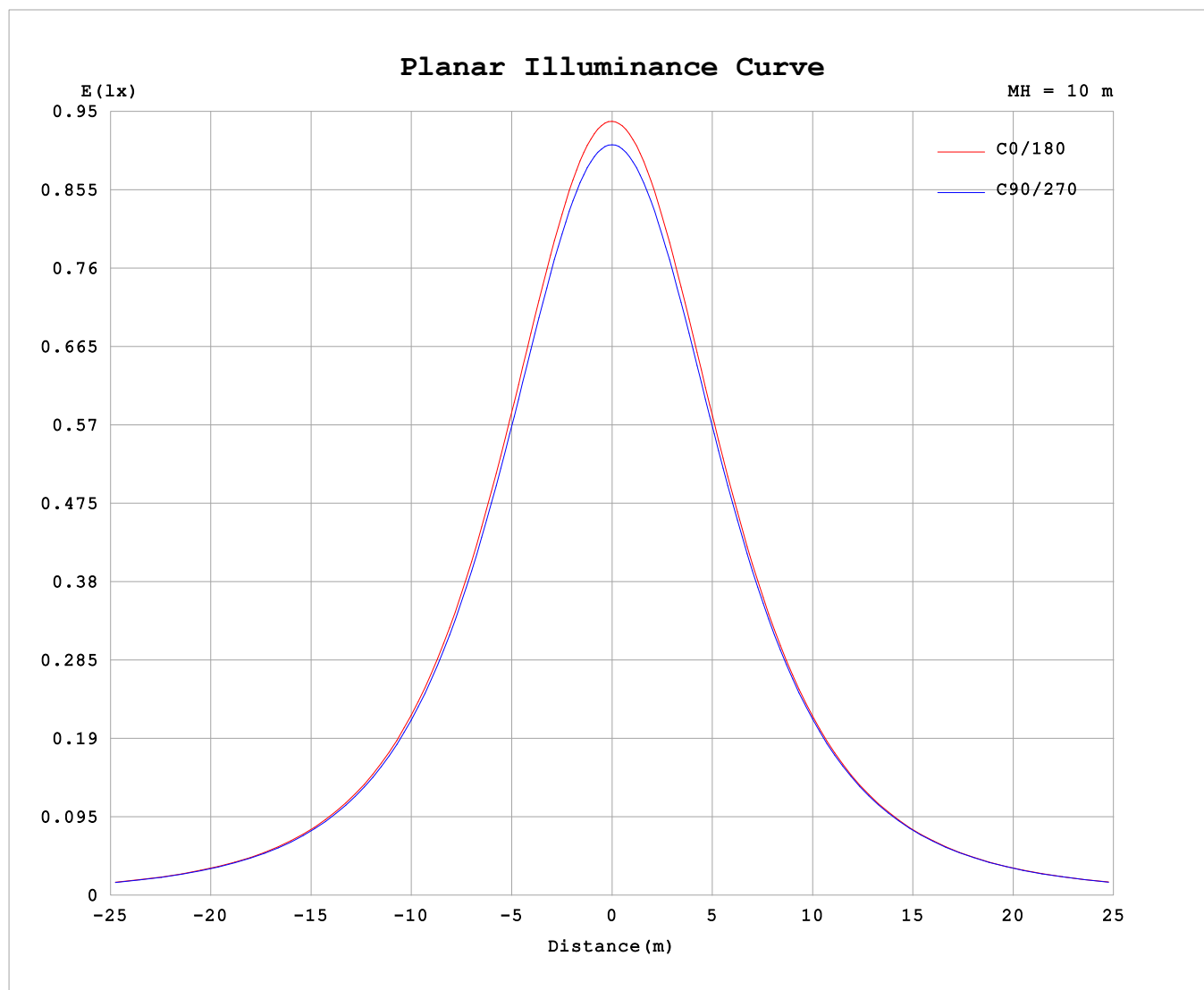
AvgL	cd/m2
L_0~180 (65) av	3669
L_0~180 (75) av	3622
L_0~180 (85) av	3926
L_90~270 (65) av	3736
L_90~270 (75) av	3736
L_90~270 (85) av	4062
L_45 (65) av	3728
L_45 (75) av	3717
L_45 (85) av	4027

Standard: GB/T 29293-2012

C Range: 0 - 360DEG
C Interval: 30.0DEG
Test Speed: HIGH
Temperature:25.3℃
Operators:
Test Date:2025-04-28

γ Range: 0 - 180DEG
γ Interval: 1.0DEG
Test System:EVERFINE GO-2000B_V1 SYSTEM V2.00.488
Humidity:65.0%
Test Distance:6.360m [K=1.0000]
Remarks:

Planar Illuminance Curve



C Range: 0 - 360DEG
C Interval: 30.0DEG
Test Speed: HIGH
Temperature: 25.3 °C
Operators:
Test Date: 2025-04-28

γ Range: 0 - 180DEG
 γ Interval: 1.0DEG
Test System: EVERFINE GO-2000B_V1 SYSTEM V2.00.488
Humidity: 65.0%
Test Distance: 6.360m [K=1.0000]
Remarks:

LUMINOUS DISTRIBUTION INTENSITY DATA

Test:U:24.00V I:0.5965A P:14.32W PF:1.000 Freq:0Hz Lamp Flux:282.895x1 lm																	
NAME: SF33-24V-5050-84-R									TYPE:						WEIGHT:		
SPEC.:									DIM.: Length=1m						SERIAL No.:		
MFR.: OLympia lighting									SUR.:						Shielding Angle:		

Table--1

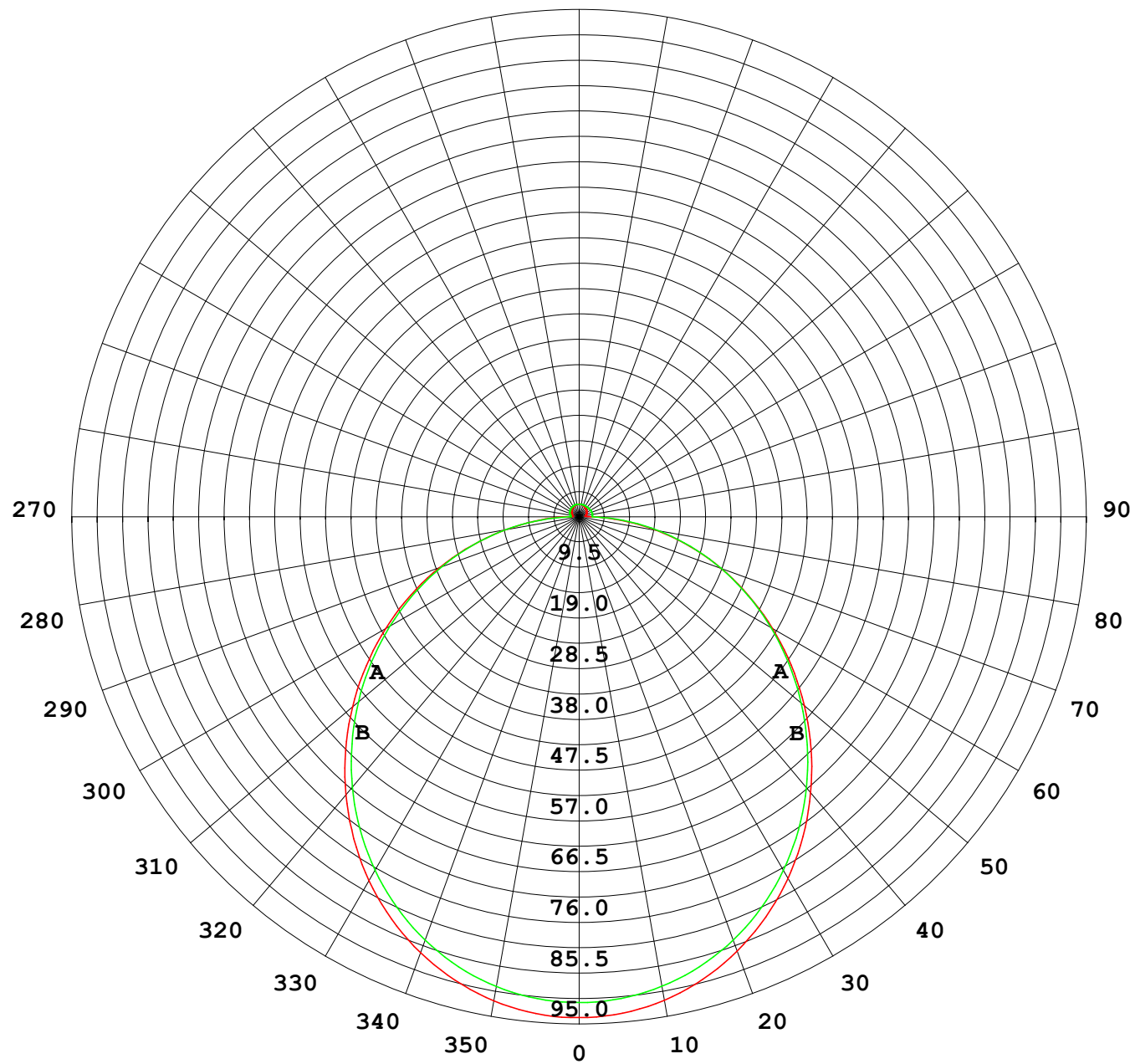
UNIT: cd

C (DEG) γ (DEG)	0	30	60	90	120	150	180	210	240	270	300	330						
0	91.5	91.5	91.5	91.5	91.5	91.5	91.5	91.5	91.5	91.5	91.5	91.5						
5	91.1	91.2	91.2	91.1	91.1	91.0	91.1	91.0	91.1	91.1	91.1	91.2						
10	89.8	90.0	89.9	89.9	89.7	89.7	89.7	89.6	89.8	89.8	90.0	89.9						
15	87.7	87.9	87.8	87.8	87.6	87.5	87.5	87.4	87.7	87.7	88.0	87.9						
20	84.8	85.0	85.0	84.9	84.7	84.5	84.5	84.5	84.8	84.9	85.1	85.0						
25	81.1	81.4	81.3	81.2	81.0	80.8	80.7	80.8	81.1	81.3	81.5	81.4						
30	76.8	77.1	76.9	76.9	76.6	76.4	76.3	76.4	76.8	77.0	77.3	77.1						
35	71.8	72.2	72.0	72.0	71.6	71.4	71.3	71.4	71.9	72.1	72.4	72.2						
40	66.3	66.7	66.5	66.5	66.2	66.0	65.8	65.9	66.5	66.6	67.0	66.8						
45	60.4	60.7	60.7	60.6	60.3	60.0	59.9	60.1	60.6	60.8	61.2	60.9						
50	54.1	54.5	54.4	54.3	54.1	53.9	53.7	53.9	54.5	54.6	55.0	54.7						
55	47.5	47.9	47.9	47.8	47.7	47.4	47.3	47.6	48.1	48.3	48.6	48.2						
60	40.8	41.2	41.2	41.1	41.1	40.9	40.8	41.1	41.6	41.7	42.0	41.5						
65	34.0	34.4	34.3	34.4	34.4	34.3	34.2	34.5	35.0	35.1	35.3	34.8						
70	27.1	27.5	27.5	27.5	27.6	27.7	27.6	28.0	28.5	28.5	28.5	27.9						
75	20.3	20.6	20.6	20.7	20.7	21.0	21.0	21.4	21.9	21.8	21.7	21.1						
80	13.5	13.8	13.8	13.9	13.6	14.3	14.4	14.8	15.3	15.2	14.9	14.3						
85	7.35	7.44	7.09	7.10	6.71	7.55	7.71	8.16	8.58	8.47	8.25	7.94						
90	2.26	2.29	1.95	1.64	1.83	2.65	2.78	3.20	3.12	2.56	2.85	2.72						
95	1.21	1.41	1.65	1.68	1.49	1.43	1.19	1.83	2.31	2.50	2.20	1.54						
100	1.29	1.49	1.71	1.74	1.69	1.52	1.15	1.72	2.32	2.51	2.25	1.59						
105	1.38	1.57	1.77	1.82	1.88	1.73	1.30	1.79	2.38	2.54	2.29	1.65						
110	1.48	1.66	1.84	1.91	2.02	1.87	1.40	1.83	2.40	2.55	2.31	1.72						
115	1.57	1.74	1.91	2.00	2.09	1.93	1.48	1.87	2.39	2.54	2.31	1.78						
120	1.66	1.82	1.97	2.09	2.13	1.99	1.56	1.90	2.39	2.51	2.29	1.82						
125	1.74	1.89	2.02	2.15	2.18	2.04	1.64	1.94	2.38	2.48	2.29	1.86						
130	1.81	1.96	2.08	2.20	2.21	2.09	1.72	1.98	2.36	2.45	2.28	1.91						
135	1.89	2.01	2.13	2.24	2.25	2.15	1.80	2.02	2.36	2.42	2.28	1.92						
140	1.95	2.06	2.18	2.29	2.28	2.19	1.88	2.06	2.36	2.40	2.28	1.95						
145	2.02	2.11	2.22	2.32	2.31	2.23	1.96	2.11	2.36	2.38	2.28	1.99						
150	2.09	2.16	2.25	2.36	2.34	2.27	2.04	2.16	2.38	2.38	2.28	2.02						
155	2.15	2.20	2.29	2.39	2.36	2.31	2.12	2.20	2.38	2.39	2.35	2.06						
160	2.22	2.26	2.32	2.41	2.38	2.35	2.20	2.23	2.39	2.39	2.36	2.10						
165	2.26	2.31	2.34	2.42	2.38	2.39	2.27	2.28	2.39	2.39	2.36	2.15						
170	2.28	2.37	2.36	2.42	2.39	2.41	2.30	2.31	2.39	2.39	2.37	2.29						
175	2.32	2.40	2.39	2.42	2.40	2.41	2.35	2.35	2.41	2.38	2.39	2.34						
180	2.33	2.40	2.40	2.42	2.41	2.41	2.36	2.38	2.42	2.40	2.42	2.39						

C Range: 0 - 360DEG
C Interval: 30.0DEG
Test Speed: HIGH
Temperature:25.3℃
Operators:
Test Date:2025-04-28

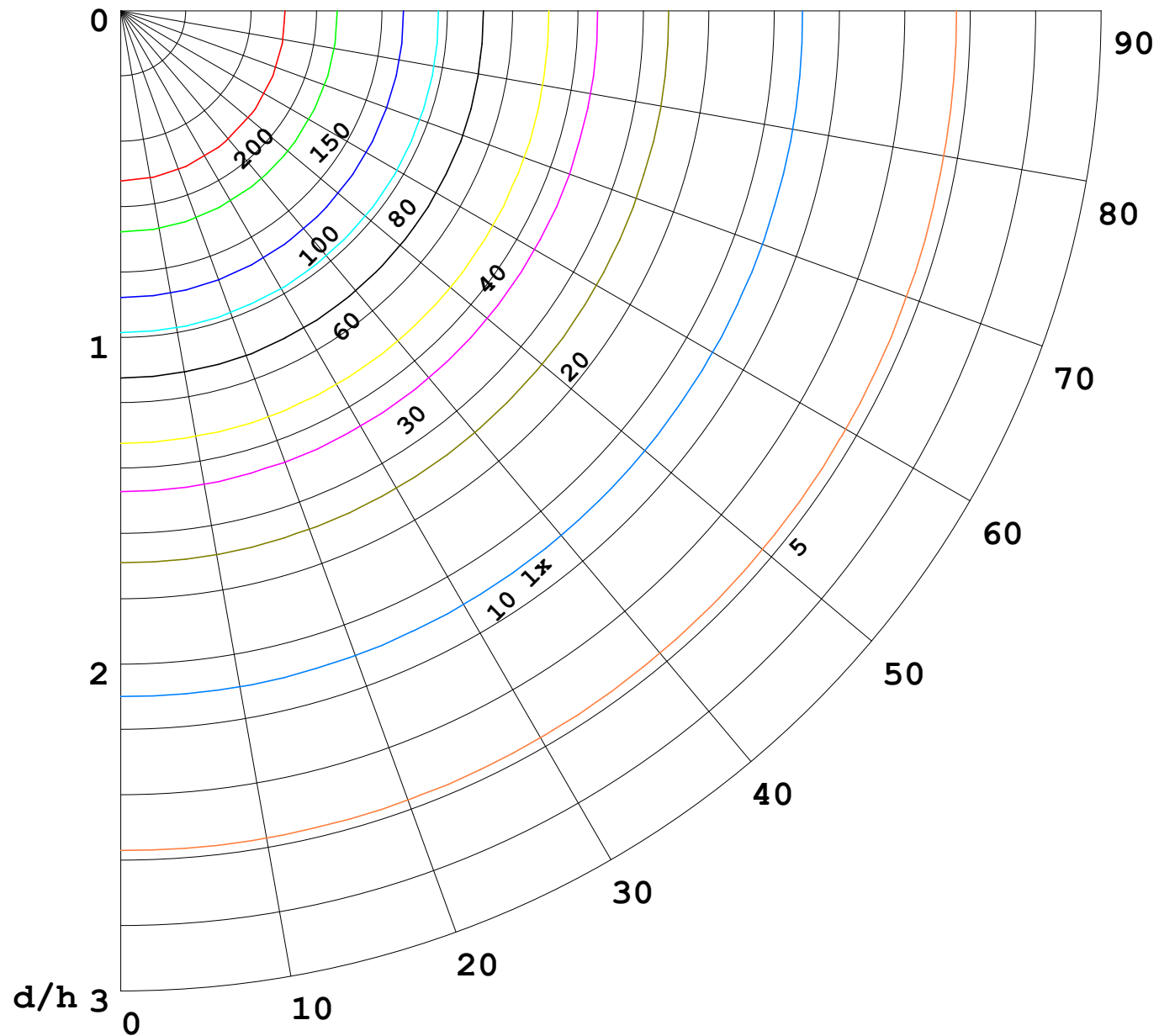
γ Range: 0 - 180DEG
γ Interval: 1.0DEG
Test System:EVERFINE GO-2000B_V1 SYSTEM V2.00.488
Humidity:65.0%
Test Distance:6.360m [K=1.0000]
Remarks:

I (cd)



1000 lm

$\kappa = 1$



F = 1000 lm
 K = 0.7
 Hcc = 0.8 m
 Hfc = 0.0 m
 Eave = 100 lx

	Pcc	Pw	Pfc
—————	70	50	30
—————	50	30	20

