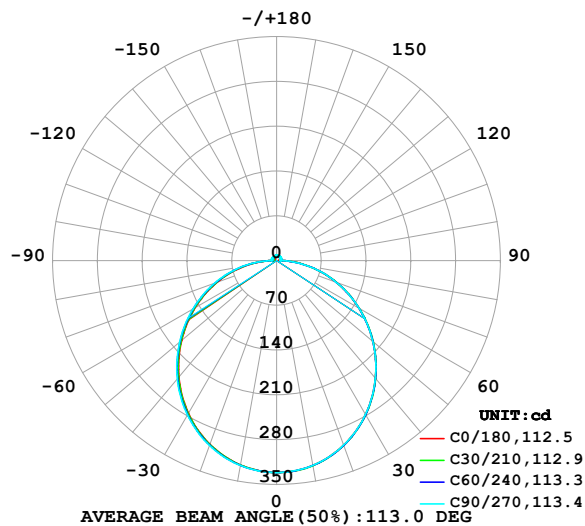


## LUMINAIRE PHOTOMETRIC TEST REPORT

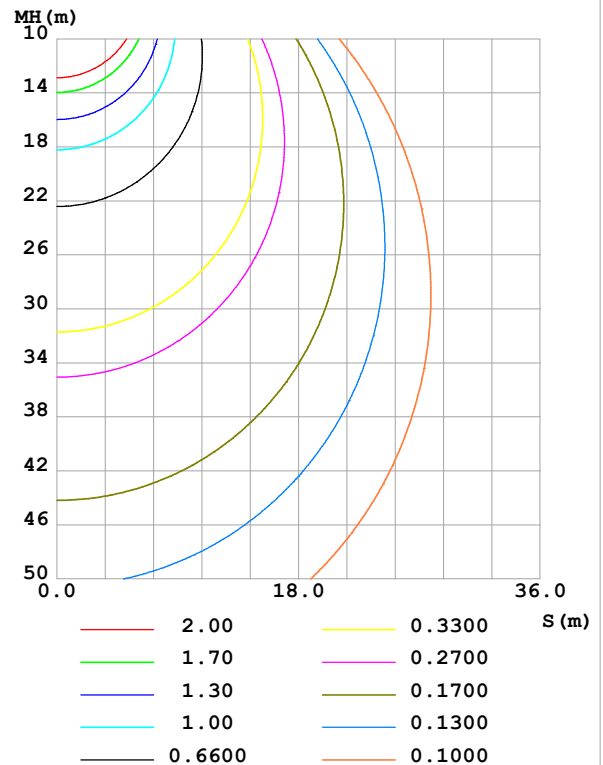
Test:U:24.00V I:0.6019A P:14.45W PF:1.000 Freq:0Hz Lamp Flux:1021.27x1 lm		
NAME: SF33-24V-5050-84-4000k-80	TYPE:	WEIGHT:
SPEC.:	DIM.: Length=1m	SERIAL No.:
MFR.: OLympia lighting	SUR.:	Shielding Angle:

DATA OF LAMP		PHOTOMETRIC DATA Eff: 70.70 lm/W			
MODEL	5050	Imax (cd)	331.3	S/MH(C0/180)	1.24
NOMINAL POWER(W)	15	LOR(%)	100.0	S/MH(C90/270)	1.25
RATED VOLTAGE(V)	24	TOTAL FLUX(lm)	1021.3	$\eta$ UP,DN(C0-180)	2.1,47.6
NOMINAL FLUX(lm)	1021.27	CIE CLASS	DIRECT	$\eta$ UP,DN(C180-360)	2.2,48.0
LAMPS INSIDE	1	$\eta$ up (%)	4.3	CIBSE SHR NOM	1.25
TEST VOLTAGE(V)		$\eta$ down (%)	95.7	CIBSE SHR MAX	1.35

LUMINOUS INTENSITY DISTRIBUTION DIAGRAM



C0 PLANE ISOLUX DIAGRAM (UNIT:lx)



C Range: 0 - 360DEG  
C Interval: 30.0DEG  
Test Speed: HIGH  
Temperature:25.3℃  
Operators:  
Test Date:2025-04-29

$\gamma$  Range: 0 - 180DEG  
 $\gamma$  Interval: 1.0DEG  
Test System:EVERFINE GO-2000B\_V1 SYSTEM V2.00.488  
Humidity:65.0%  
Test Distance:6.360m [K=1.0000]  
Remarks:

## ZONAL FLUX DIAGRAM

## ZONAL FLUX DIAGRAM:

$\gamma$	C0	C45	C90	C135	C180	C225	C270	C315	$\gamma$	$\Phi$ zone	$\Phi$ total	%lum, lamp
10	325.1	325.4	325.1	324.6	324.5	324.7	325.2	325.6	0- 10	31.32	31.32	3.07,3.07
20	306.8	307.3	306.9	305.9	305.4	306.3	307.5	307.9	10- 20	89.55	120.9	11.8,11.8
30	278.0	278.5	277.9	276.6	275.8	277.2	278.9	279.4	20- 30	135.3	256.1	25.1,25.1
40	240.3	240.8	240.3	238.7	237.8	239.6	241.6	242.2	30- 40	162.6	418.8	41,41
50	196.3	196.9	196.3	194.8	193.8	195.9	198.1	198.7	40- 50	168.9	587.6	57.5,57.5
60	148.5	149.1	148.6	147.6	146.7	149.0	151.1	151.2	50- 60	154.7	742.4	72.7,72.7
70	99.18	99.72	99.42	99.26	98.63	101.0	102.8	102.3	60- 70	123.5	865.9	84.8,84.8
80	50.16	50.42	50.19	50.69	50.47	52.92	54.51	53.25	70- 80	80.20	946.1	92.6,92.6
90	10.14	8.764	5.799	8.465	9.599	10.27	8.607	10.87	80- 90	31.15	977.3	95.7,95.7
100	4.728	5.705	6.059	5.214	4.242	6.750	8.536	6.494	90-100	6.801	984.1	96.4,96.4
110	5.422	6.268	6.643	6.187	4.759	6.993	8.563	6.829	100-110	6.570	990.6	97,97
120	6.074	6.787	7.258	7.262	5.559	7.235	8.461	7.031	110-120	6.715	997.3	97.7,97.7
130	6.653	7.156	7.705	7.707	6.147	7.434	8.311	7.204	120-130	6.427	1004	98.3,98.3
140	7.157	7.395	8.028	8.040	6.735	7.667	8.193	7.310	130-140	5.760	1010	98.9,98.9
150	7.627	7.686	8.505	8.311	7.305	7.934	8.261	7.500	140-150	4.844	1014	99.3,99.3
160	8.088	8.124	8.658	8.529	7.882	8.196	8.389	7.873	150-160	3.723	1018	99.7,99.7
170	8.117	8.555	8.710	8.656	8.089	8.421	8.479	8.339	160-170	2.359	1020	99.9,99.9
180	8.319	8.666	8.713	8.672	8.325	8.659	8.707	8.660	170-180	0.8120	1021	100,100
DEG	LUMINOUS INTENSITY:cd									UNIT:lm		

Conical surface Flux(90deg): 503.75 lm

%lum = 49.3%

%lamp = 49.3%

Conical surface Flux(130deg): 808.92 lm

%lum = 79.2%

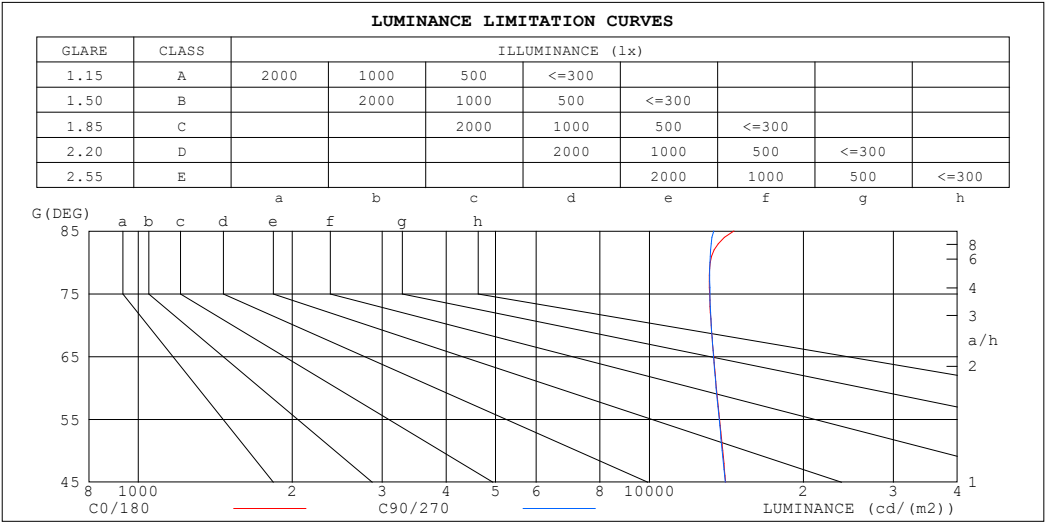
%lamp = 79.2%

C Range: 0 - 360DEG  
 C Interval: 30.0DEG  
 Test Speed: HIGH  
 Temperature:25.3℃  
 Operators:  
 Test Date:2025-04-29

$\gamma$  Range: 0 - 180DEG  
 $\gamma$  Interval: 1.0DEG  
 Test System:EVERFINE GO-2000B\_V1 SYSTEM V2.00.488  
 Humidity:65.0%  
 Test Distance:6.360m [K=1.0000]  
 Remarks:

LUMINANCE LIMITATION CURVES

Test:U:24.00V I:0.6019A P:14.45W PF:1.000 Freq:0Hz Lamp Flux:1021.27x1 lm		
NAME: SF33-24V-5050-84-4000k-80	TYPE:	WEIGHT:
SPEC.:	DIM.: Length=1m	SERIAL No.:
MFR.: OLympia lighting	SUR.:	Shielding Angle:



LUMINANCE cd/(m2)		
G (DEG)	C0/180	C90/270
85	14635	13360
80	13150	13129
75	13107	13137
70	13202	13205
65	13358	13343
60	13521	13501
55	13712	13690
50	13904	13872
45	14093	14063

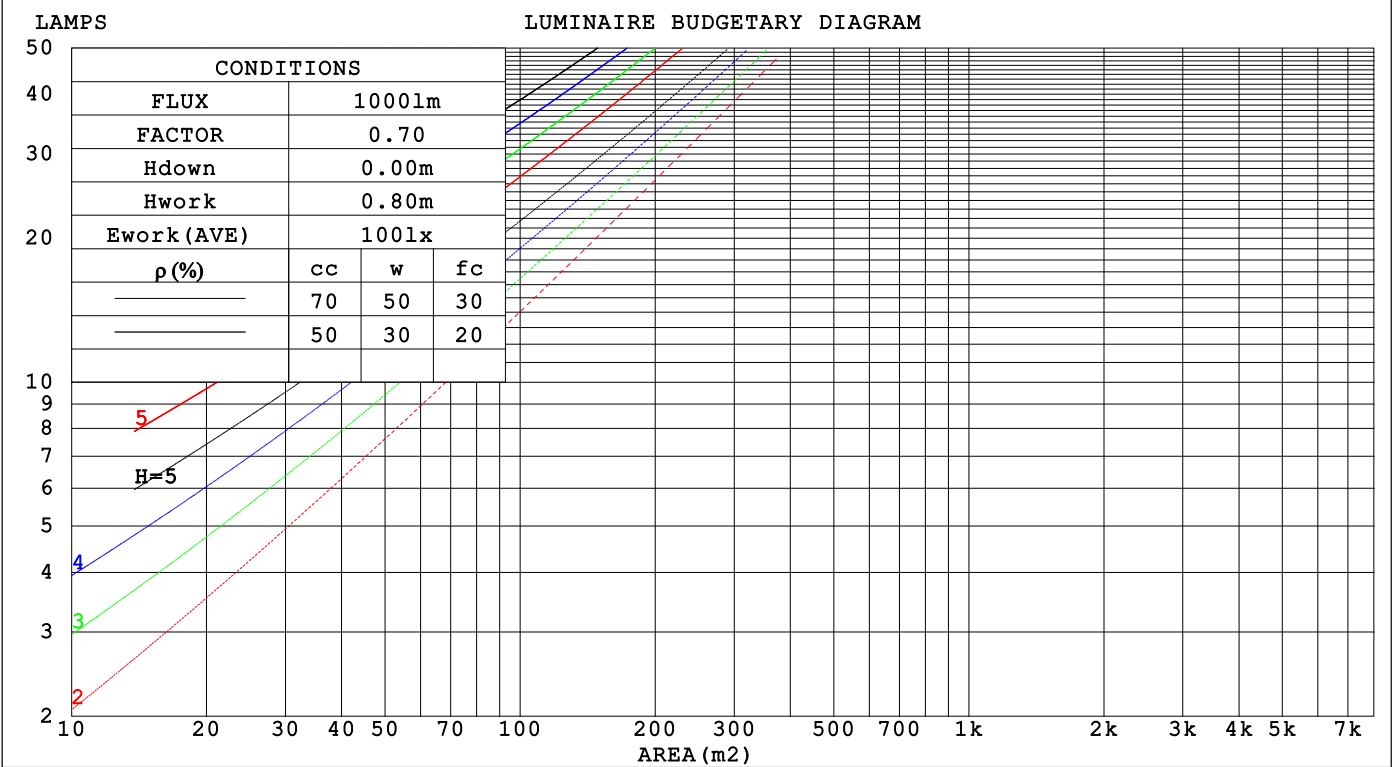
C Range: 0 - 360DEG  
C Interval: 30.0DEG  
Test Speed: HIGH  
Temperature:25.3℃  
Operators:  
Test Date:2025-04-29

γ Range: 0 - 180DEG  
γ Interval: 1.0DEG  
Test System:EVERFINE GO-2000B\_V1 SYSTEM V2.00.488  
Humidity:65.0%  
Test Distance:6.360m [K=1.0000]  
Remarks:

CU AND LUMINAIRE BUDGETARY ESTIMATE DIAGRAM

Test:U:24.00V I:0.6019A P:14.45W PF:1.000 Freq:0Hz		
Lamp Flux:1021.27x1 lm		
NAME: SF33-24V-5050-84-4000k-80	TYPE:	WEIGHT:
SPEC.:	DIM.: Length=1m	SERIAL No.:
MFR.: OLYMPIA lighting	SUR.:	Shielding Angle:

pcc	80%			70%			50%			30%			10%			0
pw	50%	30%	10%	50%	30%	10%	50%	30%	10%	50%	30%	10%	50%	30%	10%	0
pfc	20%			20%			20%			20%			20%			0
RCR	RCR:Room Cavity Ratio															



C Range: 0 - 360DEG  
C Interval: 30.0DEG  
Test Speed: HIGH  
Temperature:25.3℃  
Operators:  
Test Date:2025-04-29

γ Range: 0 - 180DEG  
γ Interval: 1.0DEG  
Test System:EVERFINE GO-2000B\_V1 SYSTEM V2.00.488  
Humidity:65.0%  
Test Distance:6.360m [K=1.0000]  
Remarks:

## WEC AND CCEC

Test:U:24.00V I:0.6019A P:14.45W PF:1.000 Freq:0Hz Lamp Flux:1021.27x1 lm		
NAME: SF33-24V-5050-84-4000k-80	TYPE:	WEIGHT:
SPEC.:	DIM.: Length=1m	SERIAL No.:
MFR.: OLympia lighting	SUR.:	Shielding Angle:

pcc	80%			70%			50%			30%			10%			0														
pw	50%	30%	10%	50%	30%	10%	50%	30%	10%	50%	30%	10%	50%	30%	10%	0														
pfc	20%			20%			20%			20%			20%			0														
RCR	RCR:Room Cavity Ratio															Wall Exitance Coefficients(WEC)														
0.0																														
1.0	.327	.186	.059	.319	.182	.058	.303	.174	.055	.288	.166	.053	.275	.159	.051															
2.0	.301	.165	.051	.294	.162	.050	.280	.156	.048	.267	.150	.047	.255	.144	.045															
3.0	.276	.147	.044	.269	.144	.043	.257	.139	.042	.245	.134	.041	.234	.130	.040															
4.0	.253	.132	.039	.247	.129	.038	.236	.125	.037	.226	.121	.037	.216	.117	.036															
5.0	.233	.119	.034	.228	.117	.034	.218	.113	.033	.208	.110	.033	.200	.107	.032															
6.0	.215	.108	.031	.211	.106	.031	.202	.103	.030	.193	.100	.030	.185	.098	.029															
7.0	.200	.099	.028	.196	.098	.028	.188	.095	.027	.180	.092	.027	.173	.090	.026															
8.0	.186	.091	.026	.183	.090	.025	.175	.088	.025	.168	.085	.025	.162	.083	.024															
9.0	.175	.084	.024	.171	.083	.023	.164	.081	.023	.158	.079	.023	.152	.077	.022															
10.0	.164	.079	.022	.161	.078	.022	.155	.076	.021	.149	.074	.021	.144	.072	.021															

pcc	80%			70%			50%			30%			10%			0
pw	50%	30%	10%	50%	30%	10%	50%	30%	10%	50%	30%	10%	50%	30%	10%	0
pfc	20%			20%			20%			20%			20%			0
RCR	RCR:Room Cavity Ratio						Ceiling Cavity Exitance Coefficients(CCEC)									
0.0	.223	.223	.223	.191	.191	.191	.130	.130	.130	.075	.075	.075	.024	.024	.024	
1.0	.215	.189	.166	.184	.162	.143	.126	.112	.099	.072	.065	.057	.023	.021	.019	
2.0	.207	.165	.130	.177	.142	.113	.121	.098	.078	.070	.057	.046	.022	.019	.015	
3.0	.199	.148	.107	.171	.128	.093	.117	.089	.065	.068	.052	.038	.022	.017	.013	
4.0	.191	.135	.091	.164	.116	.079	.113	.081	.056	.065	.048	.033	.021	.015	.011	
5.0	.184	.124	.081	.158	.108	.070	.109	.075	.049	.063	.044	.029	.020	.014	.010	
6.0	.177	.116	.073	.152	.101	.063	.105	.070	.045	.061	.041	.027	.020	.014	.009	
7.0	.170	.109	.067	.146	.095	.058	.101	.066	.041	.059	.039	.025	.019	.013	.008	
8.0	.163	.104	.063	.141	.090	.055	.097	.063	.039	.057	.037	.023	.018	.012	.008	
9.0	.157	.099	.059	.135	.086	.052	.094	.060	.037	.055	.036	.022	.018	.012	.007	
10.0	.151	.094	.057	.131	.082	.049	.091	.058	.035	.053	.034	.021	.017	.011	.007	

C Range: 0 - 360DEG  
C Interval: 30.0DEG  
Test Speed: HIGH  
Temperature:25.3℃  
Operators:  
Test Date:2025-04-29

γ Range: 0 - 180DEG  
γ Interval: 1.0DEG  
Test System:EVERFINE GO-2000B\_V1 SYSTEM V2.00.488  
Humidity:65.0%  
Test Distance:6.360m [K=1.0000]  
Remarks:

UGR(Unified Glare Rating) Table

Test:U:24.00V I:0.6019A P:14.45W PF:1.000 Freq:0Hz Lamp Flux:1021.27x1 lm										
NAME: SF33-24V-5050-84-4000k-80					TYPE:			WEIGHT:		
SPEC.:					DIM.: Length=1m			SERIAL No.:		
MFR.: OLympia lighting					SUR.:			Shielding Angle:		
ceiling/cavity	0.7	0.7	0.5	0.5	0.3	0.7	0.7	0.5	0.5	0.3
walls	0.5	0.3	0.5	0.3	0.3	0.5	0.3	0.5	0.3	0.3
working plane	0.2	0.2	0.2	0.2	0.2	0.2	0.2	0.2	0.2	0.2
Room dimensions	Viewed crosswise					Viewed endwise				
x = 2H y = 2H	19.6	21.1	20.0	21.4	21.7	19.6	21.1	20.0	21.4	21.7
3H	21.3	22.7	21.7	23.0	23.3	21.3	22.7	21.7	23.0	23.3
4H	22.1	23.4	22.4	23.7	24.1	22.1	23.4	22.4	23.7	24.0
6H	22.7	23.9	23.1	24.3	24.6	22.7	23.9	23.1	24.3	24.6
8H	22.9	24.1	23.3	24.5	24.9	22.9	24.1	23.3	24.5	24.8
12H	23.1	24.3	23.6	24.7	25.1	23.1	24.2	23.5	24.6	25.0
4H 2H	20.3	21.6	20.7	21.9	22.3	20.3	21.6	20.6	21.9	22.3
3H	22.2	23.3	22.6	23.7	24.1	22.1	23.3	22.6	23.7	24.1
4H	23.1	24.1	23.5	24.5	24.9	23.0	24.1	23.5	24.5	24.9
6H	23.8	24.7	24.3	25.2	25.6	23.8	24.7	24.3	25.2	25.6
8H	24.1	25.0	24.6	25.4	25.9	24.1	25.0	24.6	25.4	25.9
12H	24.4	25.2	24.9	25.7	26.2	24.3	25.1	24.8	25.6	26.1
8H 4H	23.4	24.2	23.9	24.7	25.2	23.4	24.2	23.8	24.7	25.2
6H	24.3	25.1	24.8	25.5	26.1	24.3	25.0	24.8	25.5	26.0
8H	24.8	25.4	25.3	25.9	26.5	24.7	25.4	25.3	25.9	26.4
12H	25.2	25.7	25.7	26.2	26.8	25.1	25.6	25.6	26.2	26.7
12H 4H	23.4	24.2	23.9	24.7	25.2	23.4	24.2	23.9	24.7	25.2
6H	24.4	25.1	25.0	25.6	26.1	24.4	25.1	24.9	25.6	26.1
8H	24.9	25.5	25.5	26.0	26.6	24.9	25.4	25.4	26.0	26.5
Variations with the observer position at spacings(CIE Pub.117):										
S = 1.0H	+ 0.1 / - 0.2					+ 0.1 / - 0.2				
1.5H	+ 0.2 / - 0.3					+ 0.2 / - 0.3				
2.0H	+ 0.1 / - 0.3					+ 0.1 / - 0.3				

CIE Pub.117, 1021 lm Total Lamp Luminous Flux Correct ( $8\log(F/F_0) = 0.1$ )  
Area: 0.022 m<sup>2</sup>

C Range: 0 - 360DEG  
C Interval: 30.0DEG  
Test Speed: HIGH  
Temperature:25.3℃  
Operators:  
Test Date:2025-04-29

γ Range: 0 - 180DEG  
γ Interval: 1.0DEG  
Test System:EVERFINE GO-2000B\_V1 SYSTEM V2.00.488  
Humidity:65.0%  
Test Distance:6.360m [K=1.0000]  
Remarks:

## UTILIZATION FACTORS TABLE

Test:U:24.00V I:0.6019A P:14.45W PF:1.000 Freq:0Hz Lamp Flux:1021.27x1 lm		
NAME: SF33-24V-5050-84-4000k-80	TYPE:	WEIGHT:
SPEC.:	DIM.: Length=1m	SERIAL No.:
MFR.: OLympia lighting	SUR.:	Shielding Angle:

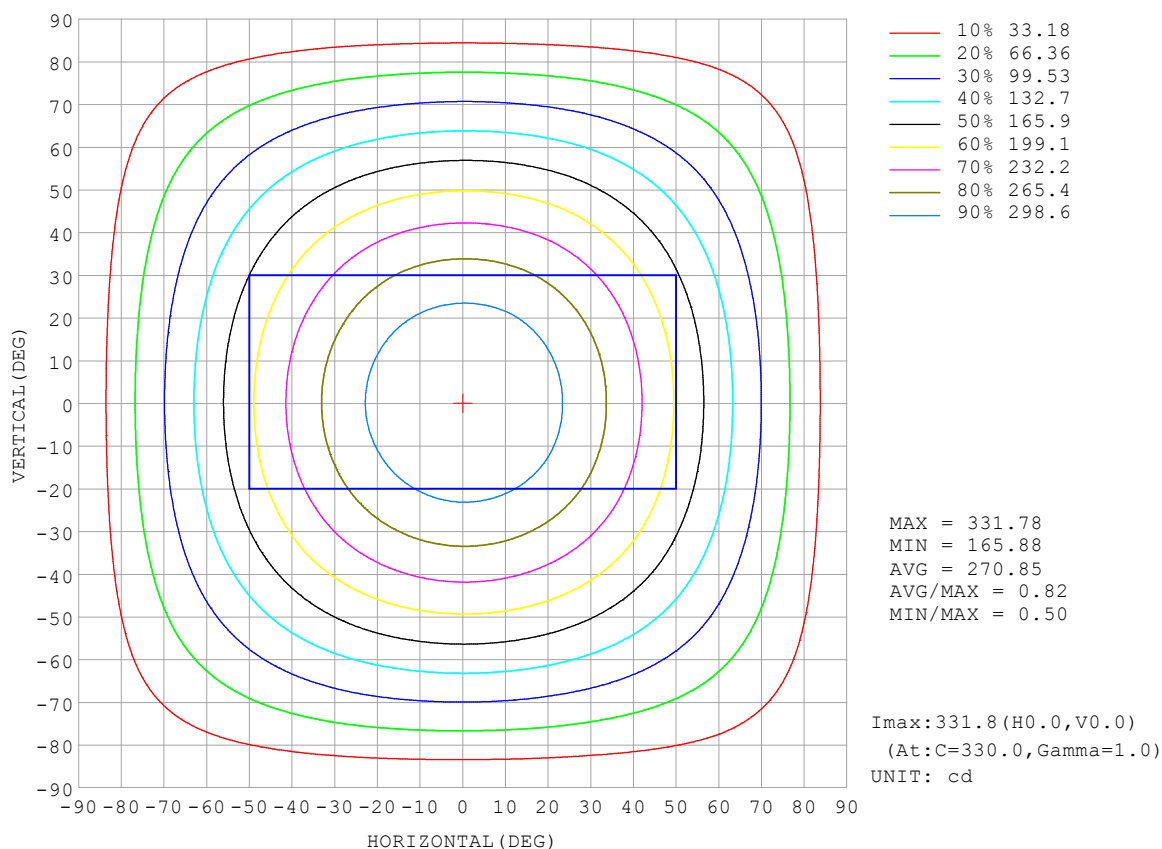
REFLECTANCE										
Ceiling	0.8	0.8	0.8	0.7	0.7	0.7	0.5	0.5	0.5	0
Walls	0.7	0.5	0.3	0.7	0.5	0.3	0.7	0.5	0.3	0
Working plane	0.2	0.2	0.2	0.2	0.2	0.2	0.2	0.2	0.2	0
ROOM INDEX	UTILIZATION FACTORS (PERCENT) $k(RI) \times RCR = 5$									
$k = 0.60$	55	44	37	55	43	36	53	43	36	30
0.80	65	53	46	64	53	46	62	52	45	38
1.00	73	62	54	72	61	54	69	62	53	46
1.25	80	70	62	79	69	62	76	67	61	53
1.50	86	75	68	84	74	67	80	72	66	57
2.00	92	83	77	90	82	76	86	79	74	65
2.50	97	88	82	94	87	81	90	83	78	69
3.00	100	93	87	97	91	85	93	87	83	73
4.00	104	98	93	101	96	91	96	92	88	78
5.00	107	101	97	104	99	95	99	95	91	81
ROOM INDEX	UF (total)									Direct
According to DIN EN 13032-2 2004			Suspended					SHRNOM = 1.25		

C Range: 0 - 360DEG  
 C Interval: 30.0DEG  
 Test Speed: HIGH  
 Temperature: 25.3 °C  
 Operators:  
 Test Date: 2025-04-29

γ Range: 0 - 180DEG  
 γ Interval: 1.0DEG  
 Test System: EVERFINE GO-2000B\_V1 SYSTEM V2.00.488  
 Humidity: 65.0%  
 Test Distance: 6.360m [K=1.0000]  
 Remarks:

## ISOCANDELA DIAGRAM

Test:U:24.00V I:0.6019A P:14.45W PF:1.000 Freq:0Hz Lamp Flux:1021.27x1 lm		
NAME: SF33-24V-5050-84-4000k-80	TYPE:	WEIGHT:
SPEC.:	DIM.: Length=1m	SERIAL No.:
MFR.: OLympia lighting	SUR.:	Shielding Angle:

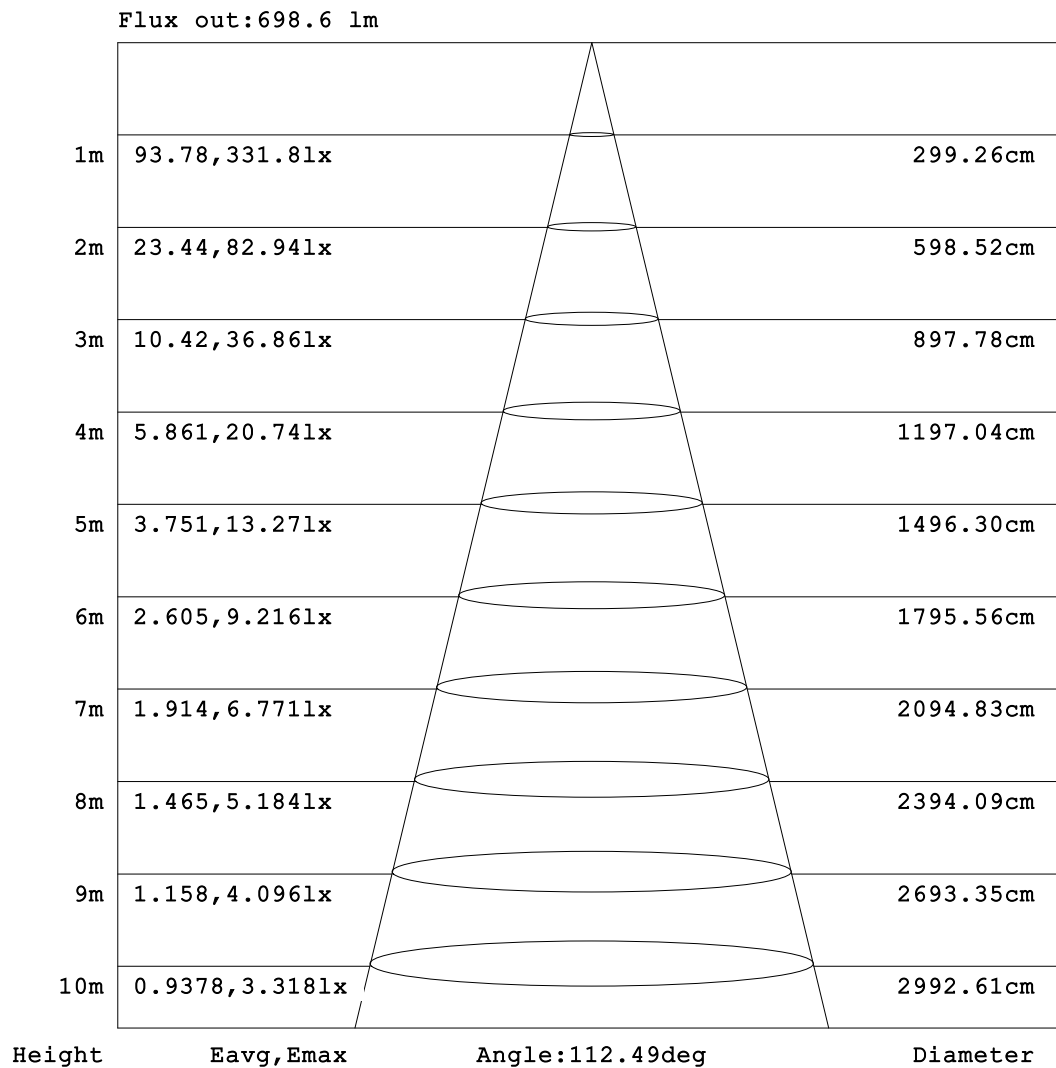


C Range: 0 - 360DEG  
C Interval: 30.0DEG  
Test Speed: HIGH  
Temperature:25.3℃  
Operators:  
Test Date:2025-04-29

γ Range: 0 - 180DEG  
γ Interval: 1.0DEG  
Test System:EVERFINE GO-2000B\_V1 SYSTEM V2.00.488  
Humidity:65.0%  
Test Distance:6.360m [K=1.0000]  
Remarks:

## AAI Figure

Test:U:24.00V I:0.6019A P:14.45W PF:1.000 Freq:0Hz Lamp Flux:1021.27x1 lm		
NAME: SF33-24V-5050-84-4000k-80	TYPE:	WEIGHT:
SPEC.:	DIM.: Length=1m	SERIAL No.:
MFR.: OLympia lighting	SUR.:	Shielding Angle:



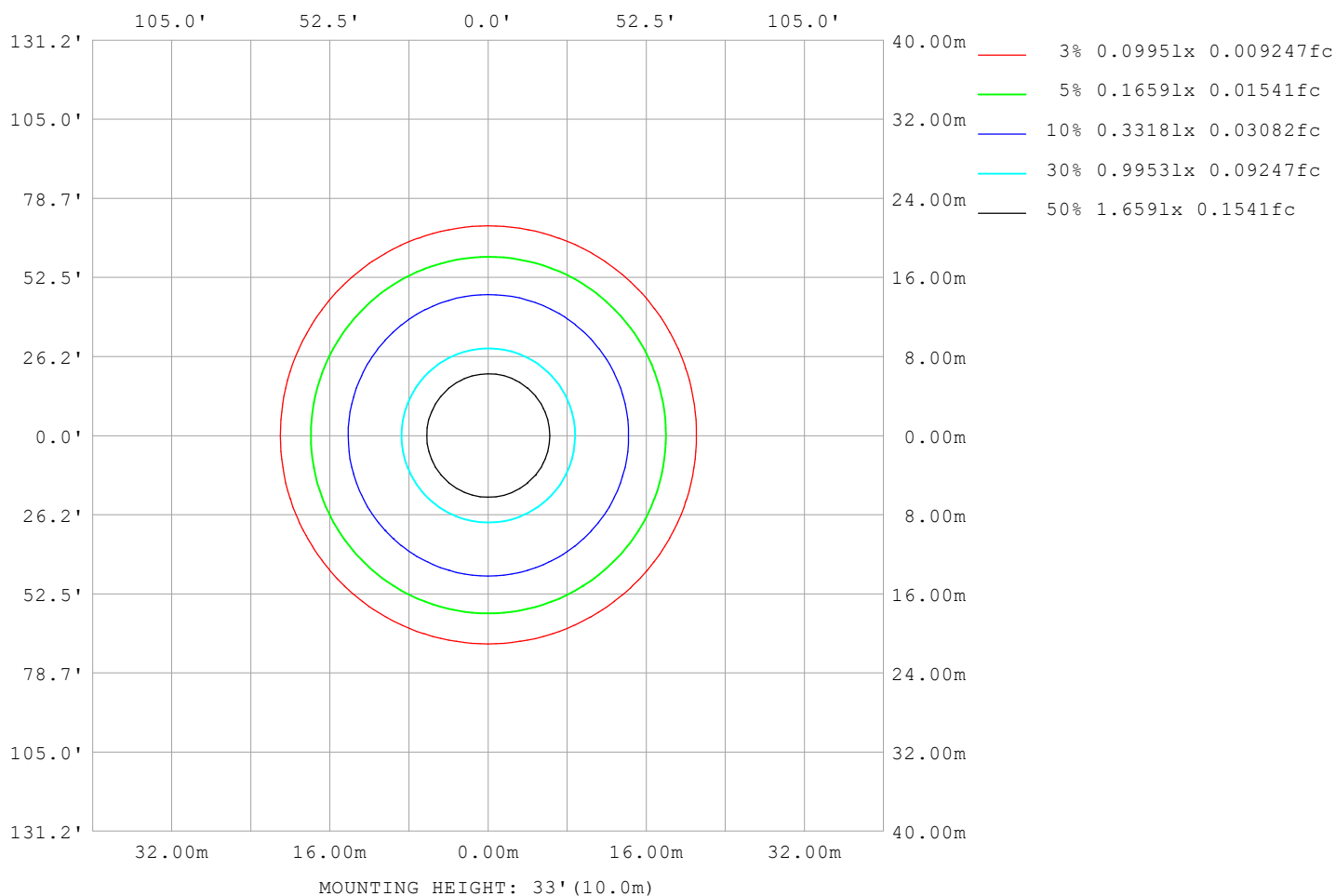
Note:The Curves indicate the illuminated area and the average illumination when the luminaire is at different distance.

C Range: 0 - 360DEG  
C Interval: 30.0DEG  
Test Speed: HIGH  
Temperature:25.3℃  
Operators:  
Test Date:2025-04-29

γ Range: 0 - 180DEG  
γ Interval: 1.0DEG  
Test System:EVERFINE GO-2000B\_V1 SYSTEM V2.00.488  
Humidity:65.0%  
Test Distance:6.360m [K=1.0000]  
Remarks:

## ISOLUX DIAGRAM

Test:U:24.00V I:0.6019A P:14.45W PF:1.000 Freq:0Hz Lamp Flux:1021.27x1 lm		
NAME: SF33-24V-5050-84-4000k-80	TYPE:	WEIGHT:
SPEC.:	DIM.: Length=1m	SERIAL No.:
MFR.: OLympia lighting	SUR.:	Shielding Angle:



C Range: 0 - 360DEG  
C Interval: 30.0DEG  
Test Speed: HIGH  
Temperature: 25.3°C  
Operators:  
Test Date: 2025-04-29

γ Range: 0 - 180DEG  
γ Interval: 1.0DEG  
Test System: EVERFINE GO-2000B\_V1 SYSTEM V2.00.488  
Humidity: 65.0%  
Test Distance: 6.360m [K=1.0000]  
Remarks:

## LED Avg.L Report

Test:U:24.00V I:0.6019A P:14.45W PF:1.000 Freq:0Hz Lamp Flux:1021.27x1 lm		
NAME: SF33-24V-5050-84-4000k-80	TYPE:	WEIGHT:
SPEC.:	DIM.: Length=1m	SERIAL No.:
MFR.: OLympia lighting	SUR.:	Shielding Angle:

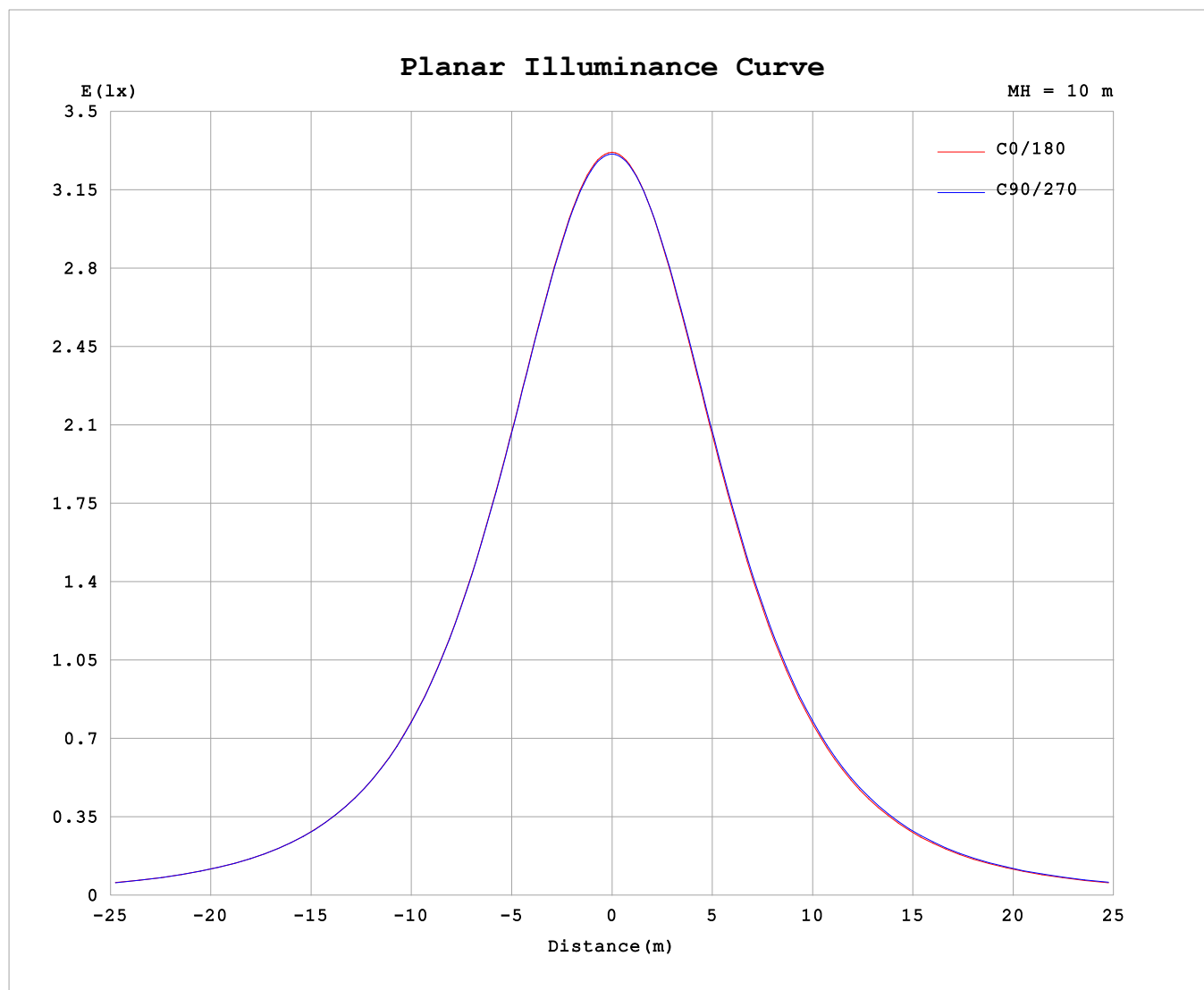
AvgL	cd/m2
L_0~180 (65) av	13267
L_0~180 (75) av	13095
L_0~180 (85) av	14168
L_90~270 (65) av	13508
L_90~270 (75) av	13479
L_90~270 (85) av	14561
L_45 (65) av	13451
L_45 (75) av	13391
L_45 (85) av	14573

Standard: GB/T 29293-2012

C Range: 0 - 360DEG  
C Interval: 30.0DEG  
Test Speed: HIGH  
Temperature:25.3℃  
Operators:  
Test Date:2025-04-29

γ Range: 0 - 180DEG  
γ Interval: 1.0DEG  
Test System:EVERFINE GO-2000B\_V1 SYSTEM V2.00.488  
Humidity:65.0%  
Test Distance:6.360m [K=1.0000]  
Remarks:

## Planar Illuminance Curve



C Range: 0 - 360DEG  
C Interval: 30.0DEG  
Test Speed: HIGH  
Temperature: 25.3 °C  
Operators:  
Test Date: 2025-04-29

$\gamma$  Range: 0 - 180DEG  
 $\gamma$  Interval: 1.0DEG  
Test System: EVERFINE GO-2000B\_V1 SYSTEM V2.00.488  
Humidity: 65.0%  
Test Distance: 6.360m [K=1.0000]  
Remarks:

## LUMINOUS DISTRIBUTION INTENSITY DATA

Test:U:24.00V I:0.6019A P:14.45W PF:1.000 Freq:0Hz Lamp Flux:1021.27x1 lm		
NAME: SF33-24V-5050-84-4000k-80	TYPE:	WEIGHT:
SPEC.:	DIM.: Length=1m	SERIAL No.:
MFR.: OLympia lighting	SUR.:	Shielding Angle:

Table--1

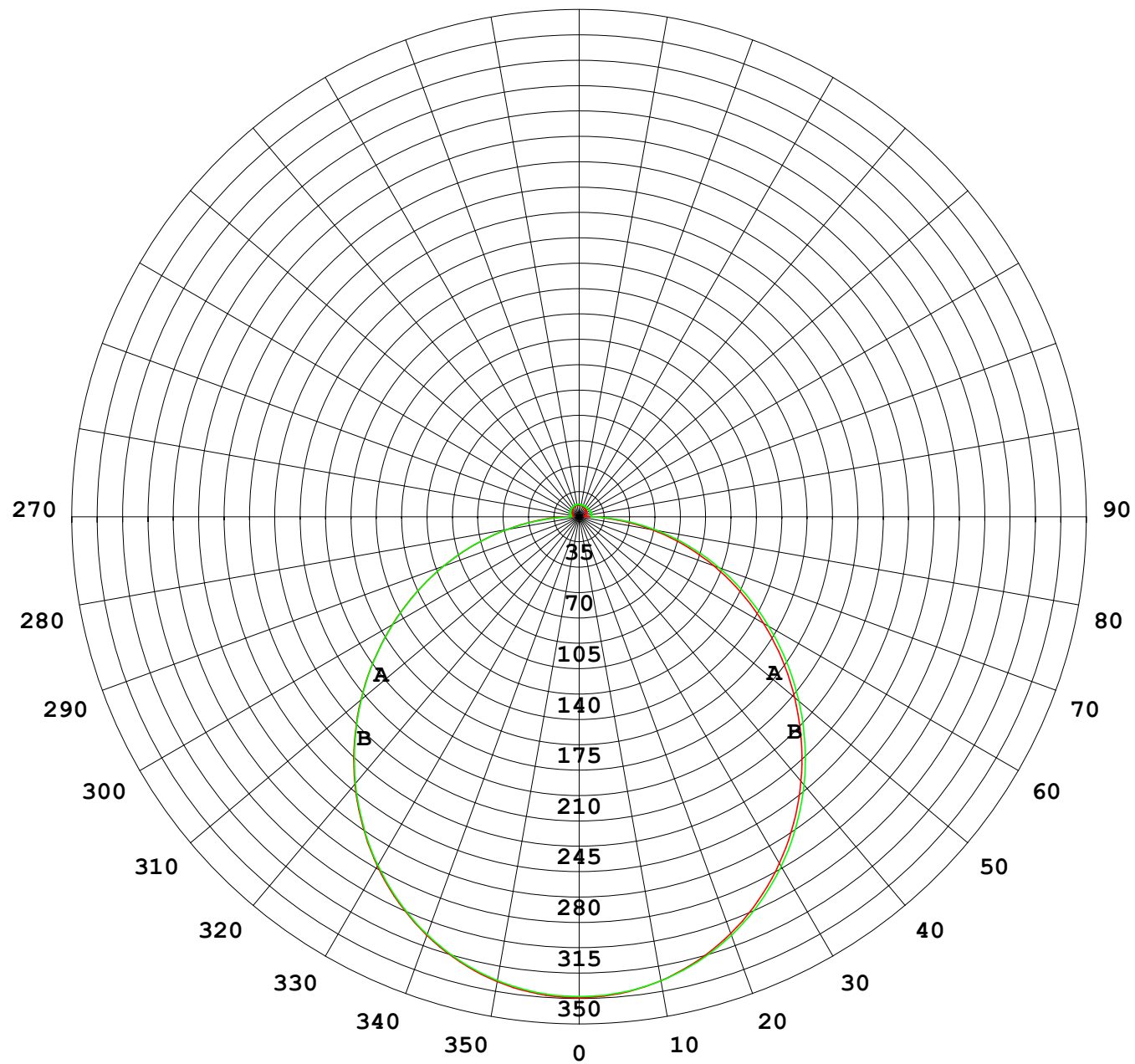
UNIT: cd

C (DEG) γ (DEG)	0	30	60	90	120	150	180	210	240	270	300	330							
0	331	331	331	331	331	331	331	331	331	331	331	331							
5	330	330	330	330	329	329	330	329	330	330	330	330							
10	325	326	325	325	325	324	325	324	325	325	326	326							
15	317	318	318	317	317	317	316	317	317	318	318	318							
20	307	307	307	307	306	306	305	306	307	307	308	308							
25	294	294	294	294	293	292	292	292	294	294	295	295							
30	278	279	278	278	277	276	276	276	278	279	280	279							
35	260	261	260	260	259	258	258	258	260	261	262	261							
40	240	241	241	240	239	238	238	239	241	242	243	242							
45	219	220	219	219	218	217	216	217	219	220	221	221							
50	196	197	197	196	195	194	194	195	197	198	199	198							
55	173	174	173	173	172	171	171	172	174	175	176	175							
60	148	149	149	149	148	147	147	148	150	151	152	151							
65	124	125	124	124	124	123	123	124	126	127	128	126							
70	99.2	100.0	99.5	99.4	99.8	98.8	98.6	100.0	102	103	103	102							
75	74.5	75.3	74.7	74.8	75.4	74.7	74.6	76.0	77.9	78.7	78.5	76.9							
80	50.2	50.7	50.1	50.2	50.9	50.5	50.5	52.0	53.9	54.5	54.1	52.4							
85	28.0	28.1	26.0	25.6	25.9	26.3	26.3	27.6	29.7	30.2	30.0	29.5							
90	10.1	10.0	7.52	5.80	7.18	9.75	9.60	10.4	10.1	8.61	10.6	11.1							
95	4.40	5.17	5.72	5.87	5.16	5.59	4.08	5.67	7.53	8.48	7.38	5.19							
100	4.73	5.46	5.95	6.06	4.95	5.48	4.24	5.86	7.64	8.54	7.56	5.43							
105	5.08	5.77	6.20	6.32	5.58	5.55	4.36	5.89	7.63	8.59	7.68	5.67							
110	5.42	6.08	6.46	6.64	6.46	5.91	4.76	6.17	7.82	8.56	7.77	5.89							
115	5.75	6.38	6.71	6.97	7.14	6.46	5.23	6.39	7.87	8.53	7.81	6.09							
120	6.07	6.65	6.92	7.26	7.51	7.02	5.56	6.56	7.90	8.46	7.78	6.28							
125	6.38	6.91	7.14	7.50	7.72	7.30	5.85	6.73	7.93	8.38	7.78	6.44							
130	6.65	6.97	7.35	7.71	7.91	7.51	6.15	6.90	7.97	8.31	7.78	6.62							
135	6.91	6.94	7.52	7.88	8.08	7.68	6.44	7.08	8.01	8.25	7.79	6.67							
140	7.16	7.12	7.67	8.03	8.23	7.85	6.73	7.27	8.06	8.19	7.79	6.83							
145	7.39	7.28	7.80	8.16	8.36	8.01	7.02	7.47	8.14	8.15	7.80	6.99							
150	7.63	7.45	7.92	8.50	8.46	8.16	7.31	7.66	8.21	8.26	7.84	7.16							
155	7.86	7.64	8.30	8.61	8.53	8.31	7.61	7.85	8.31	8.35	8.12	7.35							
160	8.09	7.83	8.42	8.66	8.60	8.46	7.88	8.03	8.36	8.39	8.21	7.53							
165	8.24	8.03	8.52	8.68	8.64	8.56	8.14	8.20	8.42	8.43	8.30	7.76							
170	8.12	8.52	8.59	8.71	8.68	8.63	8.09	8.36	8.48	8.48	8.40	8.28							
175	8.24	8.61	8.66	8.72	8.70	8.65	8.24	8.52	8.57	8.56	8.54	8.48							
180	8.32	8.64	8.70	8.71	8.69	8.65	8.32	8.62	8.69	8.71	8.69	8.63							

C Range: 0 - 360DEG  
C Interval: 30.0DEG  
Test Speed: HIGH  
Temperature:25.3℃  
Operators:  
Test Date:2025-04-29

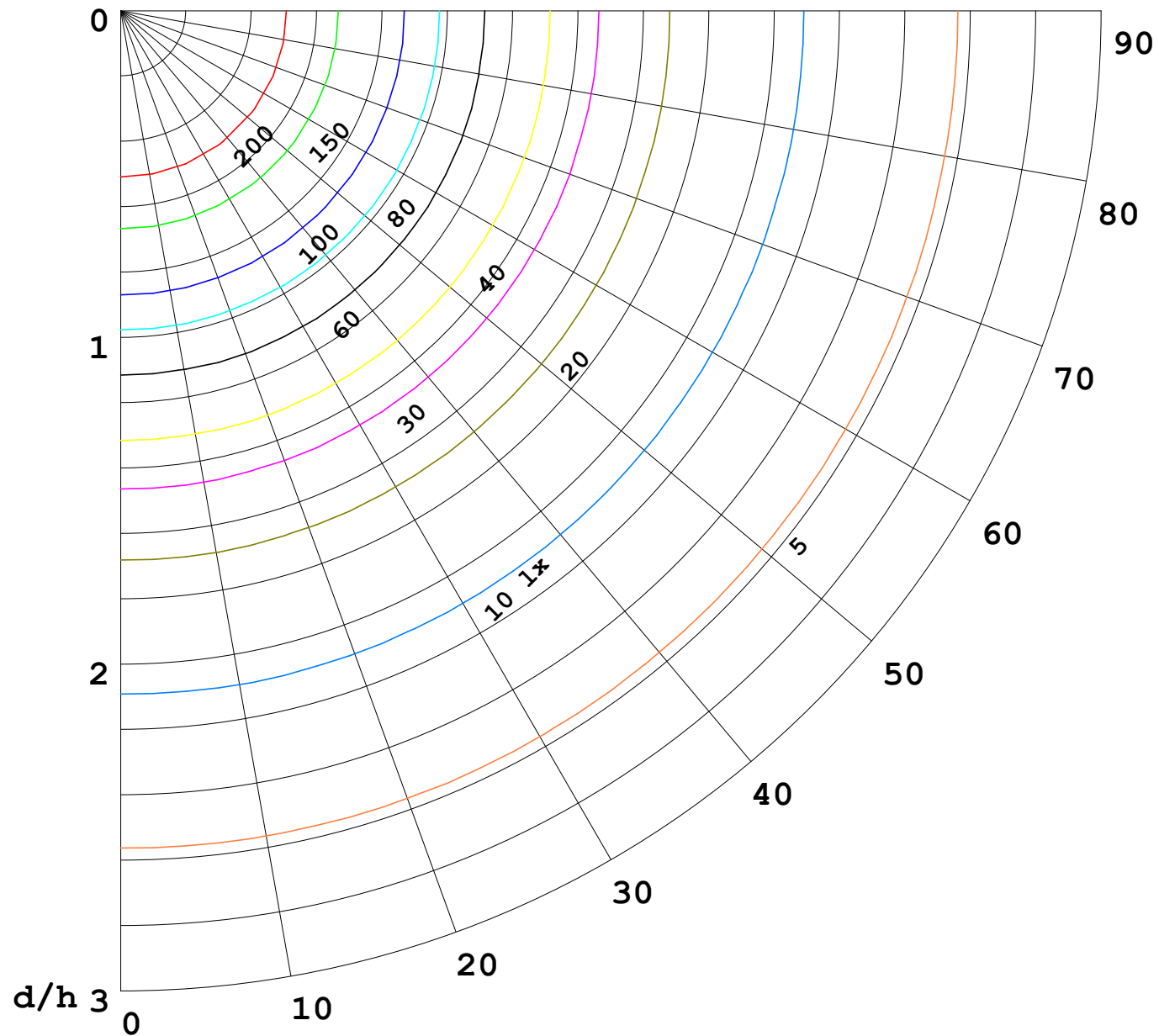
γ Range: 0 - 180DEG  
γ Interval: 1.0DEG  
Test System:EVERFINE GO-2000B\_V1 SYSTEM V2.00.488  
Humidity:65.0%  
Test Distance:6.360m [K=1.0000]  
Remarks:

I (cd)



1000 lm

$\kappa = 1$



F = 1000 lm  
 K = 0.7  
 Hcc = 0.8 m  
 Hfc = 0.0 m  
 Eave = 100 lx

	Pcc	Pw	Pfc
—————	70	50	30
—————	50	30	20

