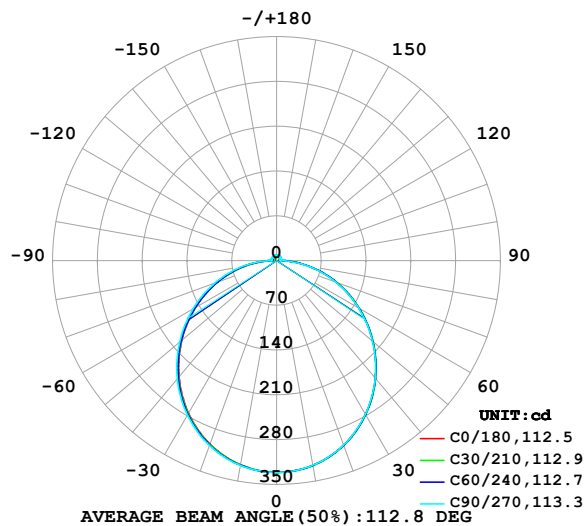


## LUMINAIRE PHOTOMETRIC TEST REPORT

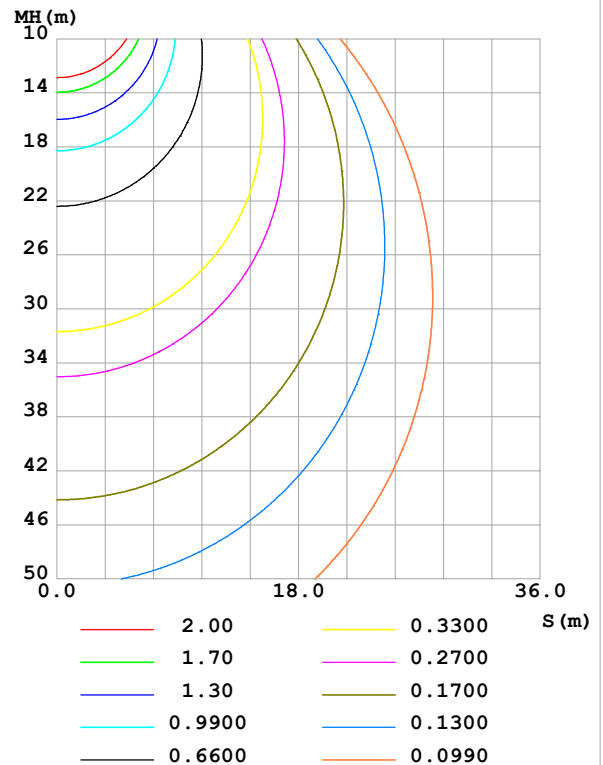
Test:U:24.00V I:0.6218A P:14.92W PF:1.000 Freq:0Hz Lamp Flux:1018.91x1 lm		
NAME: SF33-24V-5050-84-6500k-80	TYPE:	WEIGHT:
SPEC.:	DIM.: Length=1m	SERIAL No.:
MFR.: OLympia lighting	SUR.:	Shielding Angle:

DATA OF LAMP		PHOTOMETRIC DATA				Eff: 68.28 lm/W
MODEL	5050	I <sub>max</sub> (cd)	331.1	S/MH(C0/180)	1.24	
NOMINAL POWER(W)	15	LOR(%)	100.0	S/MH(C90/270)	1.25	
RATED VOLTAGE(V)	24	TOTAL FLUX(lm)	1018.9	η UP,DN(C0-180)	2.1,47.6	
NOMINAL FLUX(lm)	1018.91	CIE CLASS	DIRECT	η UP,DN(C180-360)	2.3,48.1	
LAMPS INSIDE	1	η up (%)	4.4	CIBSE SHR NOM	1.25	
TEST VOLTAGE(V)		η down (%)	95.6	CIBSE SHR MAX	1.35	

LUMINOUS INTENSITY DISTRIBUTION DIAGRAM



C0 PLANE ISOLUX DIAGRAM (UNIT:lx)



C Range: 0 - 360DEG  
C Interval: 30.0DEG  
Test Speed: HIGH  
Temperature:25.3℃  
Operators:  
Test Date:2025-04-29

γ Range: 0 - 180DEG  
γ Interval: 1.0DEG  
Test System:EVERFINE GO-2000B\_V1 SYSTEM V2.00.488  
Humidity:65.0%  
Test Distance:6.360m [K=1.0000]  
Remarks:

## ZONAL FLUX DIAGRAM

## ZONAL FLUX DIAGRAM:

$\gamma$	C0	C45	C90	C135	C180	C225	C270	C315	$\gamma$	$\Phi$ zone	$\Phi$ total	%lum, lamp
10	325.0	325.3	324.9	324.2	324.2	324.6	325.2	325.6	0- 10	31.31	31.31	3.07,3.07
20	306.8	307.2	306.7	305.3	305.1	306.1	307.5	308.1	10- 20	89.50	120.8	11.9,11.9
30	277.9	278.3	277.7	275.6	275.4	276.8	278.9	279.7	20- 30	135.2	256.0	25.1,25.1
40	240.4	240.7	239.9	237.4	237.3	238.9	241.6	242.6	30- 40	162.4	418.4	41.1,41.1
50	196.4	196.8	195.7	193.0	193.2	194.8	198.0	199.1	40- 50	168.5	586.9	57.6,57.6
60	148.7	149.1	147.9	145.3	146.1	147.1	151.0	151.8	50- 60	154.2	741.1	72.7,72.7
70	99.59	100.00	98.65	96.70	98.10	98.19	102.8	102.9	60- 70	122.8	863.9	84.8,84.8
80	50.66	50.95	49.28	48.30	49.46	51.49	54.49	54.02	70- 80	79.41	943.3	92.6,92.6
90	11.37	9.682	5.679	8.792	11.13	11.67	9.044	11.84	80- 90	31.15	974.4	95.6,95.6
100	4.692	5.653	5.944	5.732	4.350	7.202	8.912	6.679	90-100	7.179	981.6	96.3,96.3
110	5.361	6.048	6.546	6.501	4.947	7.419	8.958	6.982	100-110	6.801	988.4	97,97
120	5.999	6.515	7.056	6.972	5.530	7.543	8.805	7.165	110-120	6.766	995.2	97.7,97.7
130	6.576	6.855	7.429	7.405	6.110	7.662	8.585	7.302	120-130	6.393	1002	98.3,98.3
140	7.069	7.083	7.728	7.790	6.693	7.812	8.402	7.416	130-140	5.709	1007	98.9,98.9
150	7.537	7.408	8.269	8.123	7.264	7.992	8.338	7.575	140-150	4.795	1012	99.3,99.3
160	7.998	7.950	8.498	8.415	7.820	8.210	8.341	7.852	150-160	3.684	1016	99.7,99.7
170	7.932	8.494	8.674	8.597	7.921	8.422	8.445	8.253	160-170	2.338	1018	99.9,99.9
180	8.157	8.654	8.712	8.616	8.154	8.664	8.698	8.609	170-180	0.8064	1019	100,100
DEG	LUMINOUS INTENSITY:cd									UNIT:lm		

Conical surface Flux(90deg): 503.23 lm

%lum = 49.4%

%lamp = 49.4%

Conical surface Flux(130deg): 807.3 lm

%lum = 79.2%

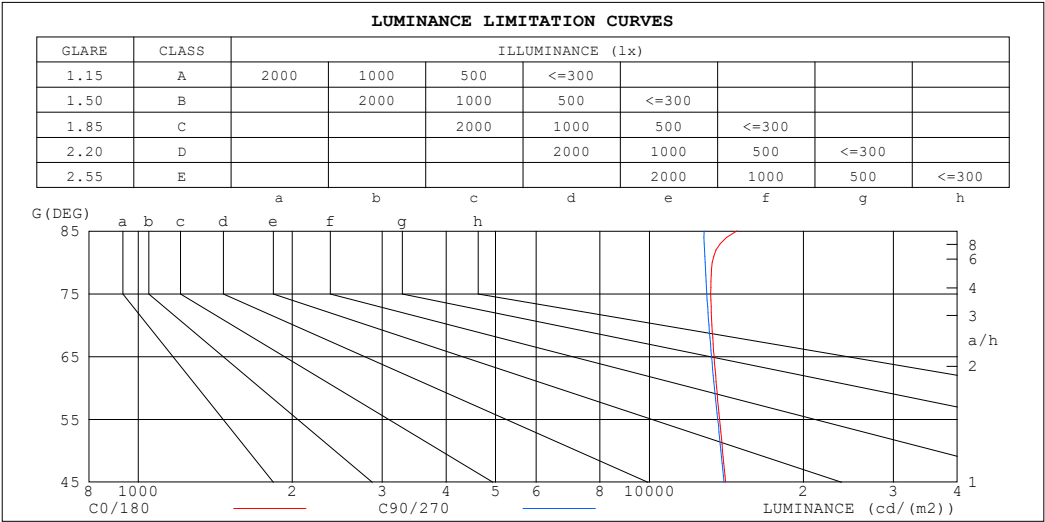
%lamp = 79.2%

C Range: 0 - 360DEG  
 C Interval: 30.0DEG  
 Test Speed: HIGH  
 Temperature:25.3℃  
 Operators:  
 Test Date:2025-04-29

$\gamma$  Range: 0 - 180DEG  
 $\gamma$  Interval: 1.0DEG  
 Test System:EVERFINE GO-2000B\_V1 SYSTEM V2.00.488  
 Humidity:65.0%  
 Test Distance:6.360m [K=1.0000]  
 Remarks:

LUMINANCE LIMITATION CURVES

Test:U:24.00V I:0.6218A P:14.92W PF:1.000 Freq:0Hz Lamp Flux:1018.91x1 lm		
NAME: SF33-24V-5050-84-6500k-80	TYPE:	WEIGHT:
SPEC.:	DIM.: Length=1m	SERIAL No.:
MFR.: OLympia lighting	SUR.:	Shielding Angle:



LUMINANCE cd/(m2)		
G (DEG)	C0/180	C90/270
85	14817	12787
80	13269	12856
75	13178	12949
70	13244	13065
65	13378	13224
60	13529	13397
55	13712	13601
50	13897	13792
45	14085	13992

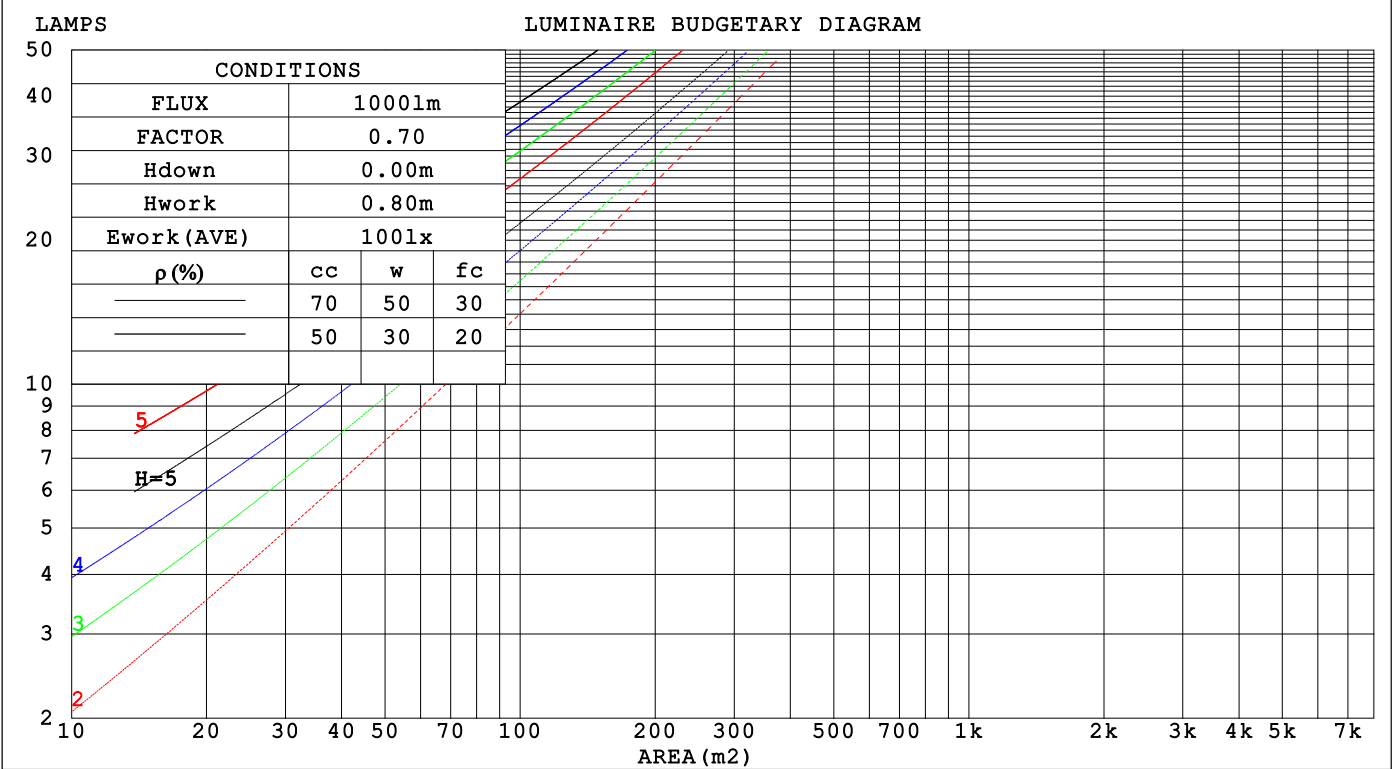
C Range: 0 - 360DEG  
C Interval: 30.0DEG  
Test Speed: HIGH  
Temperature:25.3℃  
Operators:  
Test Date:2025-04-29

γ Range: 0 - 180DEG  
γ Interval: 1.0DEG  
Test System:EVERFINE GO-2000B\_V1 SYSTEM V2.00.488  
Humidity:65.0%  
Test Distance:6.360m [K=1.0000]  
Remarks:

CU AND LUMINAIRE BUDGETARY ESTIMATE DIAGRAM

Test:U:24.00V I:0.6218A P:14.92W PF:1.000 Freq:0Hz		
Lamp Flux:1018.91x1 lm		
NAME: SF33-24V-5050-84-6500k-80	TYPE:	WEIGHT:
SPEC.:	DIM.: Length=1m	SERIAL No.:
MFR.: OLYMPIA lighting	SUR.:	Shielding Angle:

pcc	80%			70%			50%			30%			10%			0
pw	50%	30%	10%	50%	30%	10%	50%	30%	10%	50%	30%	10%	50%	30%	10%	0
pfc	20%			20%			20%			20%			20%			0
RCR	RCR:Room Cavity Ratio															



C Range: 0 - 360DEG

C Interval: 30.0DEG

Test Speed: HIGH

Temperature:25.3℃

Operators:

Test Date:2025-04-29

γ Range: 0 - 180DEG

γ Interval: 1.0DEG

Test System:EVERFINE GO-2000B\_V1 SYSTEM V2.00.488

Humidity:65.0%

Test Distance:6.360m [K=1.0000]

Remarks:

## WEC AND CCEC

Test:U:24.00V I:0.6218A P:14.92W PF:1.000 Freq:0Hz Lamp Flux:1018.91x1 lm		
NAME: SF33-24V-5050-84-6500k-80	TYPE:	WEIGHT:
SPEC.:	DIM.: Length=1m	SERIAL No.:
MFR.: OLympia lighting	SUR.:	Shielding Angle:

pcc	80%			70%			50%			30%			10%			0														
pw	50%	30%	10%	50%	30%	10%	50%	30%	10%	50%	30%	10%	50%	30%	10%	0														
pfc	20%			20%			20%			20%			20%			0														
RCR	RCR:Room Cavity Ratio															Wall Exitance Coefficients(WEC)														
0.0																														
1.0	.327	.186	.059	.318	.181	.058	.302	.173	.055	.288	.166	.053	.274	.159	.051															
2.0	.301	.165	.051	.294	.162	.050	.279	.155	.048	.266	.149	.047	.254	.144	.045															
3.0	.276	.147	.044	.269	.144	.043	.257	.139	.042	.245	.134	.041	.234	.130	.040															
4.0	.253	.131	.039	.247	.129	.038	.236	.125	.037	.225	.121	.036	.216	.117	.036															
5.0	.233	.119	.034	.227	.117	.034	.217	.113	.033	.208	.110	.033	.199	.107	.032															
6.0	.215	.108	.031	.210	.106	.031	.201	.103	.030	.193	.100	.029	.185	.097	.029															
7.0	.200	.099	.028	.196	.097	.028	.187	.095	.027	.180	.092	.027	.173	.090	.026															
8.0	.186	.091	.026	.183	.090	.025	.175	.088	.025	.168	.085	.025	.162	.083	.024															
9.0	.174	.084	.024	.171	.083	.023	.164	.081	.023	.158	.079	.023	.152	.077	.022															
10.0	.164	.079	.022	.161	.078	.022	.155	.076	.021	.149	.074	.021	.143	.072	.021															

pcc	80%			70%			50%			30%			10%			0
pw	50%	30%	10%	50%	30%	10%	50%	30%	10%	50%	30%	10%	50%	30%	10%	0
pfc	20%			20%			20%			20%			20%			0
RCR	RCR:Room Cavity Ratio						Ceiling Cavity Exitance Coefficients (CCEC)									
0.0	.224	.224	.224	.191	.191	.191	.131	.131	.131	.075	.075	.075	.024	.024	.024	
1.0	.215	.190	.167	.184	.163	.143	.126	.112	.099	.072	.065	.058	.023	.021	.019	
2.0	.207	.166	.131	.177	.143	.113	.122	.099	.079	.070	.057	.046	.023	.019	.015	
3.0	.200	.148	.107	.171	.128	.093	.117	.089	.065	.068	.052	.039	.022	.017	.013	
4.0	.192	.135	.092	.165	.117	.080	.113	.081	.056	.065	.048	.033	.021	.016	.011	
5.0	.184	.125	.081	.158	.108	.070	.109	.075	.050	.063	.044	.030	.020	.014	.010	
6.0	.177	.117	.073	.152	.101	.064	.105	.071	.045	.061	.042	.027	.020	.014	.009	
7.0	.170	.110	.067	.146	.095	.059	.101	.067	.042	.059	.039	.025	.019	.013	.008	
8.0	.164	.104	.063	.141	.090	.055	.098	.063	.039	.057	.037	.023	.018	.012	.008	
9.0	.158	.099	.060	.136	.086	.052	.094	.060	.037	.055	.036	.022	.018	.012	.007	
10.0	.152	.095	.057	.131	.082	.050	.091	.058	.035	.053	.034	.021	.017	.011	.007	

C Range: 0 - 360DEG  
C Interval: 30.0DEG  
Test Speed: HIGH  
Temperature:25.3℃  
Operators:  
Test Date:2025-04-29

γ Range: 0 - 180DEG  
γ Interval: 1.0DEG  
Test System:EVERFINE GO-2000B\_V1 SYSTEM V2.00.488  
Humidity:65.0%  
Test Distance:6.360m [K=1.0000]  
Remarks:

UGR(Unified Glare Rating) Table

Test:U:24.00V I:0.6218A P:14.92W PF:1.000 Freq:0Hz Lamp Flux:1018.91x1 lm										
NAME: SF33-24V-5050-84-6500k-80					TYPE:			WEIGHT:		
SPEC.:					DIM.: Length=1m			SERIAL No.:		
MFR.: OLympia lighting					SUR.:			Shielding Angle:		
ceiling/cavity	0.7	0.7	0.5	0.5	0.3	0.7	0.7	0.5	0.5	0.3
walls	0.5	0.3	0.5	0.3	0.3	0.5	0.3	0.5	0.3	0.3
working plane	0.2	0.2	0.2	0.2	0.2	0.2	0.2	0.2	0.2	0.2
Room dimensions	Viewed crosswise					Viewed endwise				
x = 2H y = 2H	19.7	21.1	20.0	21.4	21.7	19.6	21.1	20.0	21.4	21.7
3H	21.4	22.7	21.7	23.0	23.4	21.3	22.7	21.7	23.0	23.3
4H	22.1	23.4	22.5	23.7	24.1	22.0	23.3	22.4	23.7	24.0
6H	22.7	24.0	23.1	24.3	24.7	22.6	23.9	23.0	24.2	24.6
8H	23.0	24.2	23.4	24.5	24.9	22.9	24.1	23.3	24.4	24.8
12H	23.2	24.3	23.6	24.7	25.1	23.0	24.2	23.5	24.6	25.0
4H 2H	20.3	21.6	20.7	21.9	22.3	20.3	21.6	20.7	21.9	22.3
3H	22.2	23.3	22.6	23.7	24.1	22.1	23.3	22.6	23.7	24.1
4H	23.1	24.1	23.5	24.5	25.0	23.0	24.1	23.5	24.5	24.9
6H	23.9	24.8	24.3	25.2	25.7	23.8	24.7	24.3	25.1	25.6
8H	24.2	25.0	24.7	25.5	26.0	24.1	25.0	24.6	25.4	25.9
12H	24.5	25.3	24.9	25.7	26.2	24.3	25.1	24.8	25.6	26.1
8H 4H	23.4	24.3	23.9	24.7	25.2	23.4	24.2	23.9	24.7	25.2
6H	24.4	25.1	24.9	25.6	26.1	24.3	25.0	24.8	25.5	26.0
8H	24.8	25.5	25.3	26.0	26.5	24.7	25.4	25.3	25.9	26.4
12H	25.2	25.8	25.8	26.3	26.9	25.1	25.6	25.6	26.2	26.7
12H 4H	23.4	24.2	23.9	24.7	25.2	23.4	24.2	23.9	24.7	25.2
6H	24.5	25.1	25.0	25.6	26.2	24.4	25.1	24.9	25.6	26.1
8H	25.0	25.5	25.5	26.0	26.6	24.9	25.4	25.4	26.0	26.5
Variations with the observer position at spacings(CIE Pub.117):										
S = 1.0H	+ 0.1 / - 0.2					+ 0.1 / - 0.2				
1.5H	+ 0.2 / - 0.3					+ 0.2 / - 0.3				
2.0H	+ 0.1 / - 0.3					+ 0.1 / - 0.3				

CIE Pub.117, 1019 lm Total Lamp Luminous Flux Correct ( $8\log(F/F_0) = 0.1$ )  
Area: 0.022 m<sup>2</sup>

C Range: 0 - 360DEG  
C Interval: 30.0DEG  
Test Speed: HIGH  
Temperature:25.3℃  
Operators:  
Test Date:2025-04-29

γ Range: 0 - 180DEG  
γ Interval: 1.0DEG  
Test System:EVERFINE GO-2000B\_V1 SYSTEM V2.00.488  
Humidity:65.0%  
Test Distance:6.360m [K=1.0000]  
Remarks:

## UTILIZATION FACTORS TABLE

Test:U:24.00V I:0.6218A P:14.92W PF:1.000 Freq:0Hz Lamp Flux:1018.91x1 lm		
NAME: SF33-24V-5050-84-6500k-80	TYPE:	WEIGHT:
SPEC.:	DIM.: Length=1m	SERIAL No.:
MFR.: OLympia lighting	SUR.:	Shielding Angle:

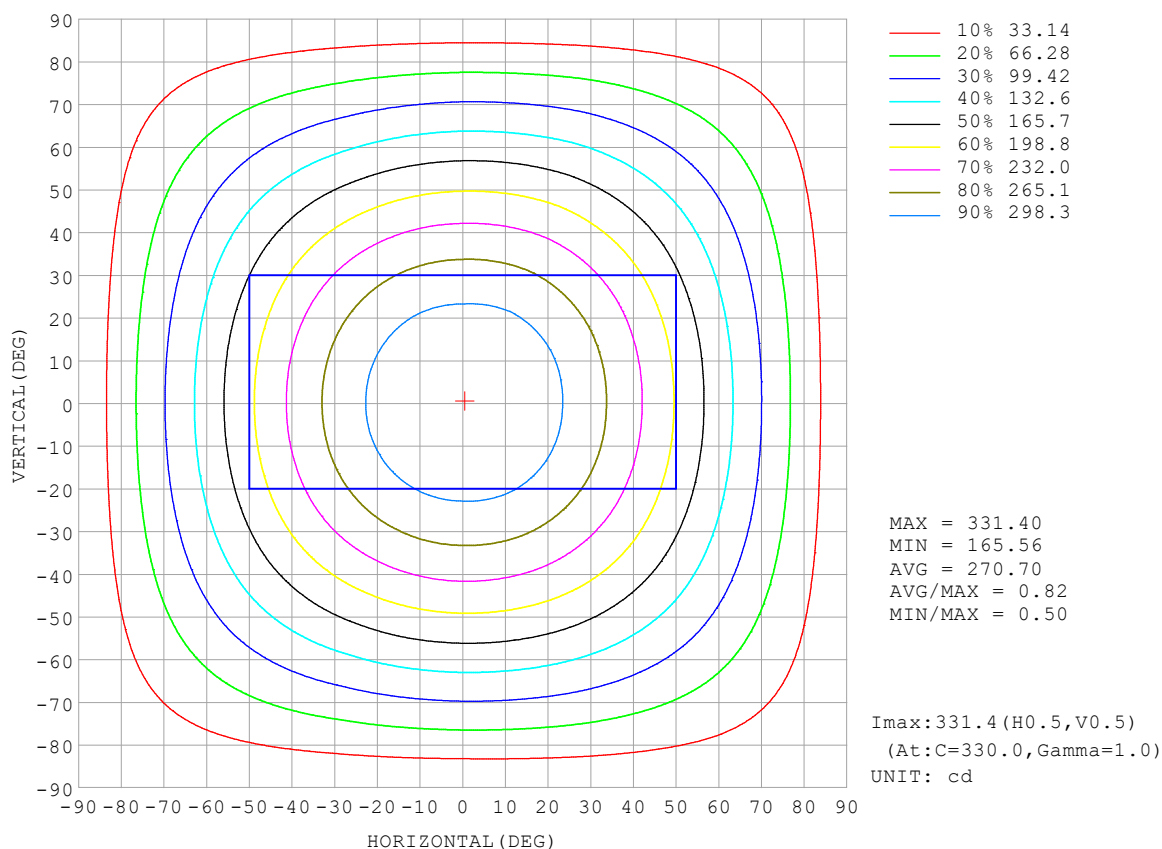
REFLECTANCE										
Ceiling	0.8	0.8	0.8	0.7	0.7	0.7	0.5	0.5	0.5	0
Walls	0.7	0.5	0.3	0.7	0.5	0.3	0.7	0.5	0.3	0
Working plane	0.2	0.2	0.2	0.2	0.2	0.2	0.2	0.2	0.2	0
ROOM INDEX	UTILIZATION FACTORS (PERCENT) $k(RI) \times RCR = 5$									
$k = 0.60$	55	44	37	55	43	37	53	43	36	30
0.80	65	53	46	64	53	46	62	52	45	38
1.00	73	62	54	72	61	54	69	62	53	46
1.25	81	70	62	79	69	62	76	67	61	53
1.50	86	75	68	84	74	67	80	72	66	57
2.00	92	83	77	90	82	76	86	79	74	65
2.50	97	88	82	94	87	81	90	83	78	69
3.00	100	93	87	97	91	85	93	87	83	73
4.00	104	98	93	101	96	91	96	92	88	78
5.00	107	101	97	104	99	95	99	95	91	81
ROOM INDEX	UF (total)									Direct
According to DIN EN 13032-2 2004			Suspended					SHRNOM = 1.25		

C Range: 0 - 360DEG  
 C Interval: 30.0DEG  
 Test Speed: HIGH  
 Temperature: 25.3 °C  
 Operators:  
 Test Date: 2025-04-29

γ Range: 0 - 180DEG  
 γ Interval: 1.0DEG  
 Test System: EVERFINE GO-2000B\_V1 SYSTEM V2.00.488  
 Humidity: 65.0%  
 Test Distance: 6.360m [K=1.0000]  
 Remarks:

## ISOCANDELA DIAGRAM

Test:U:24.00V I:0.6218A P:14.92W PF:1.000 Freq:0Hz Lamp Flux:1018.91x1 lm		
NAME: SF33-24V-5050-84-6500k-80	TYPE:	WEIGHT:
SPEC.:	DIM.: Length=1m	SERIAL No.:
MFR.: OLympia lighting	SUR.:	Shielding Angle:



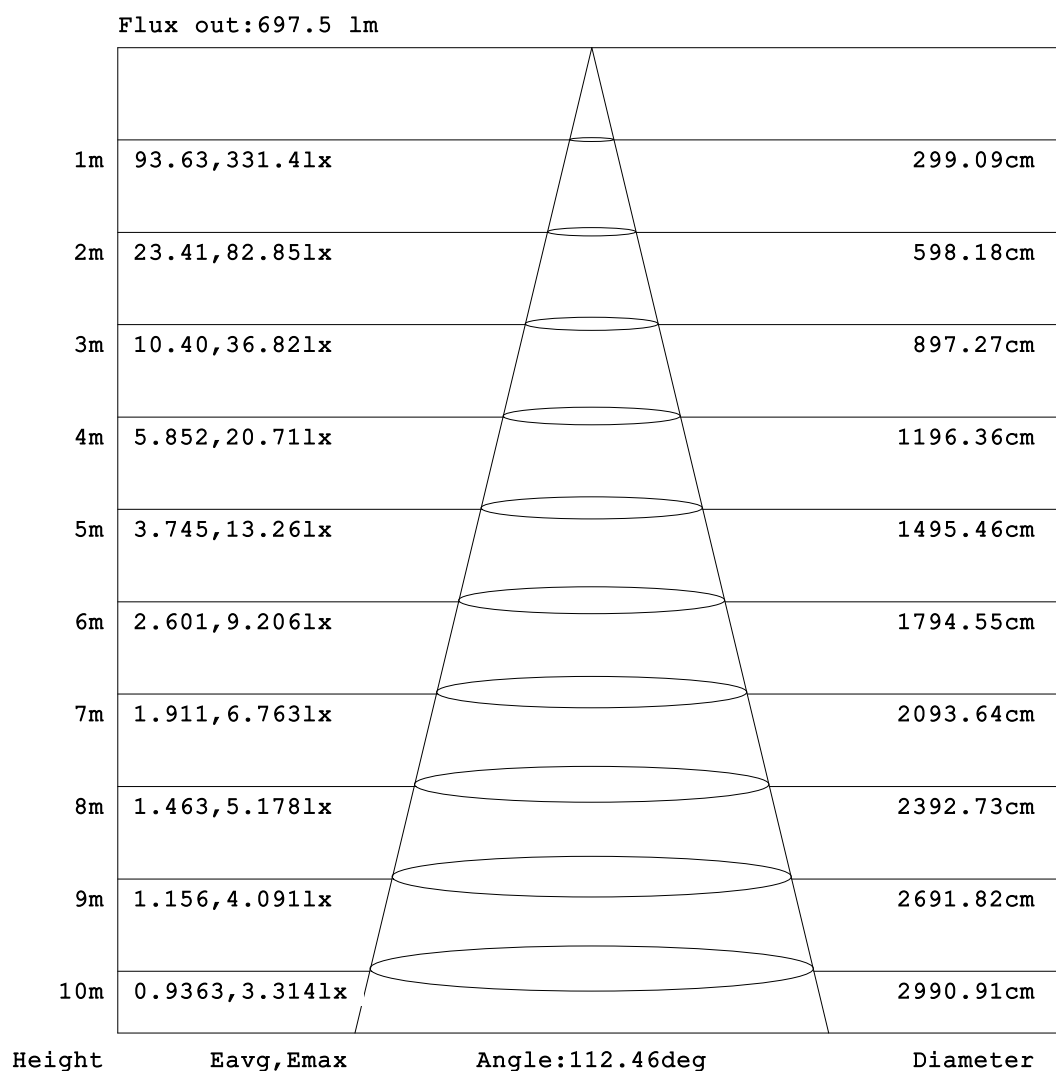
C Range: 0 - 360DEG  
C Interval: 30.0DEG  
Test Speed: HIGH  
Temperature:25.3℃  
Operators:  
Test Date:2025-04-29

γ Range: 0 - 180DEG  
γ Interval: 1.0DEG  
Test System:EVERFINE GO-2000B\_V1 SYSTEM V2.00.488  
Humidity:65.0%  
Test Distance:6.360m [K=1.0000]  
Remarks:



## AAI Figure

Test:U:24.00V I:0.6218A P:14.92W PF:1.000 Freq:0Hz Lamp Flux:1018.91x1 lm		
NAME: SF33-24V-5050-84-6500k-80	TYPE:	WEIGHT:
SPEC.:	DIM.: Length=1m	SERIAL No.:
MFR.: OLympia lighting	SUR.:	Shielding Angle:



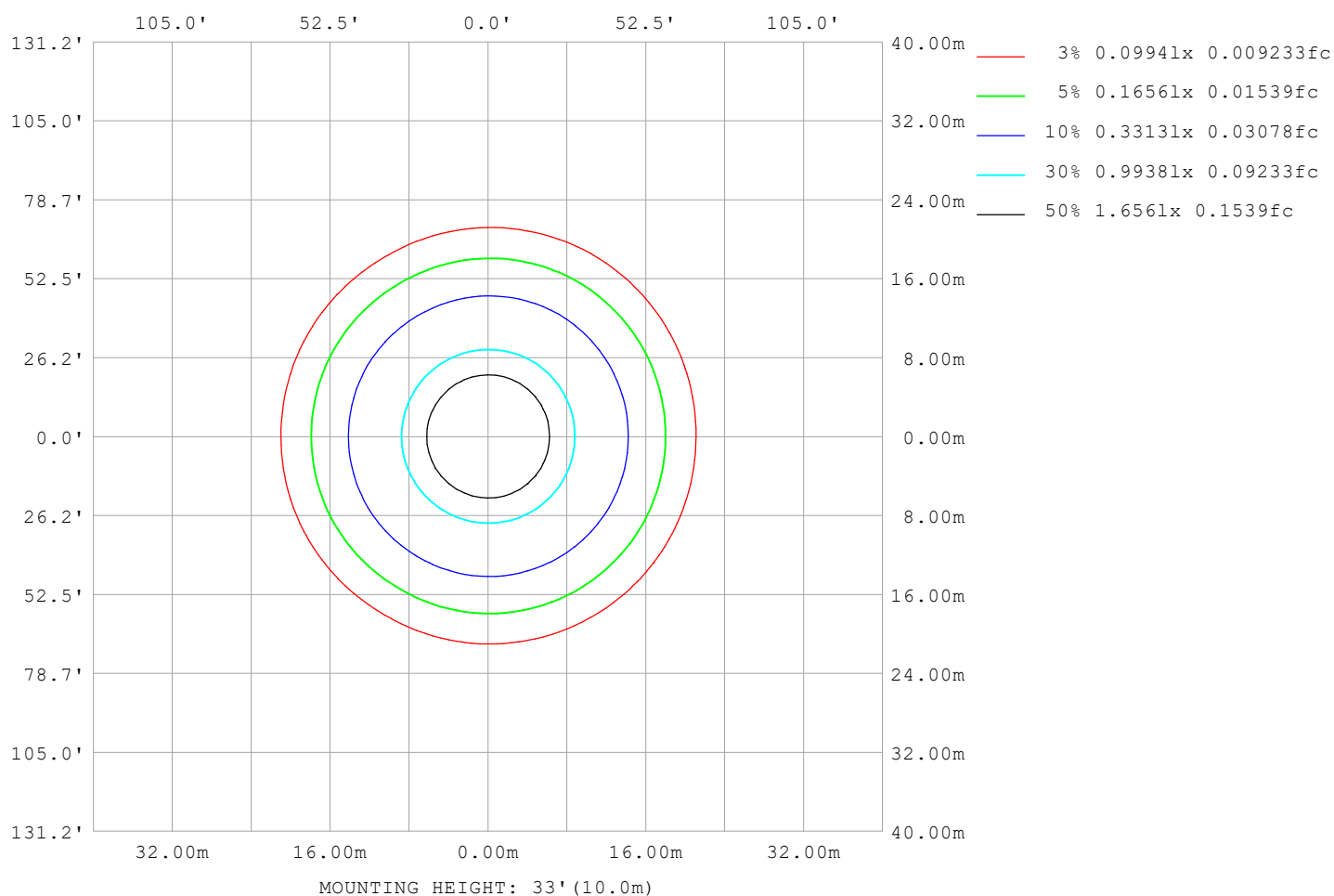
Note:The Curves indicate the illuminated area and the average illumination when the luminaire is at different distance.

C Range: 0 - 360DEG  
C Interval: 30.0DEG  
Test Speed: HIGH  
Temperature:25.3℃  
Operators:  
Test Date:2025-04-29

γ Range: 0 - 180DEG  
γ Interval: 1.0DEG  
Test System:EVERFINE GO-2000B\_V1 SYSTEM V2.00.488  
Humidity:65.0%  
Test Distance:6.360m [K=1.0000]  
Remarks:

## ISOLUX DIAGRAM

Test:U:24.00V I:0.6218A P:14.92W PF:1.000 Freq:0Hz Lamp Flux:1018.9lx1 lm		
NAME: SF33-24V-5050-84-6500k-80	TYPE:	WEIGHT:
SPEC.:	DIM.: Length=1m	SERIAL No.:
MFR.: OLympia lighting	SUR.:	Shielding Angle:



C Range: 0 - 360DEG  
C Interval: 30.0DEG  
Test Speed: HIGH  
Temperature: 25.3°C  
Operators:  
Test Date: 2025-04-29

γ Range: 0 - 180DEG  
γ Interval: 1.0DEG  
Test System: EVERFINE GO-2000B\_V1 SYSTEM V2.00.488  
Humidity: 65.0%  
Test Distance: 6.360m [K=1.0000]  
Remarks:

## LED Avg.L Report

Test:U:24.00V I:0.6218A P:14.92W PF:1.000 Freq:0Hz Lamp Flux:1018.91x1 lm		
NAME: SF33-24V-5050-84-6500k-80	TYPE:	WEIGHT:
SPEC.:	DIM.: Length=1m	SERIAL No.:
MFR.: OLympia lighting	SUR.:	Shielding Angle:

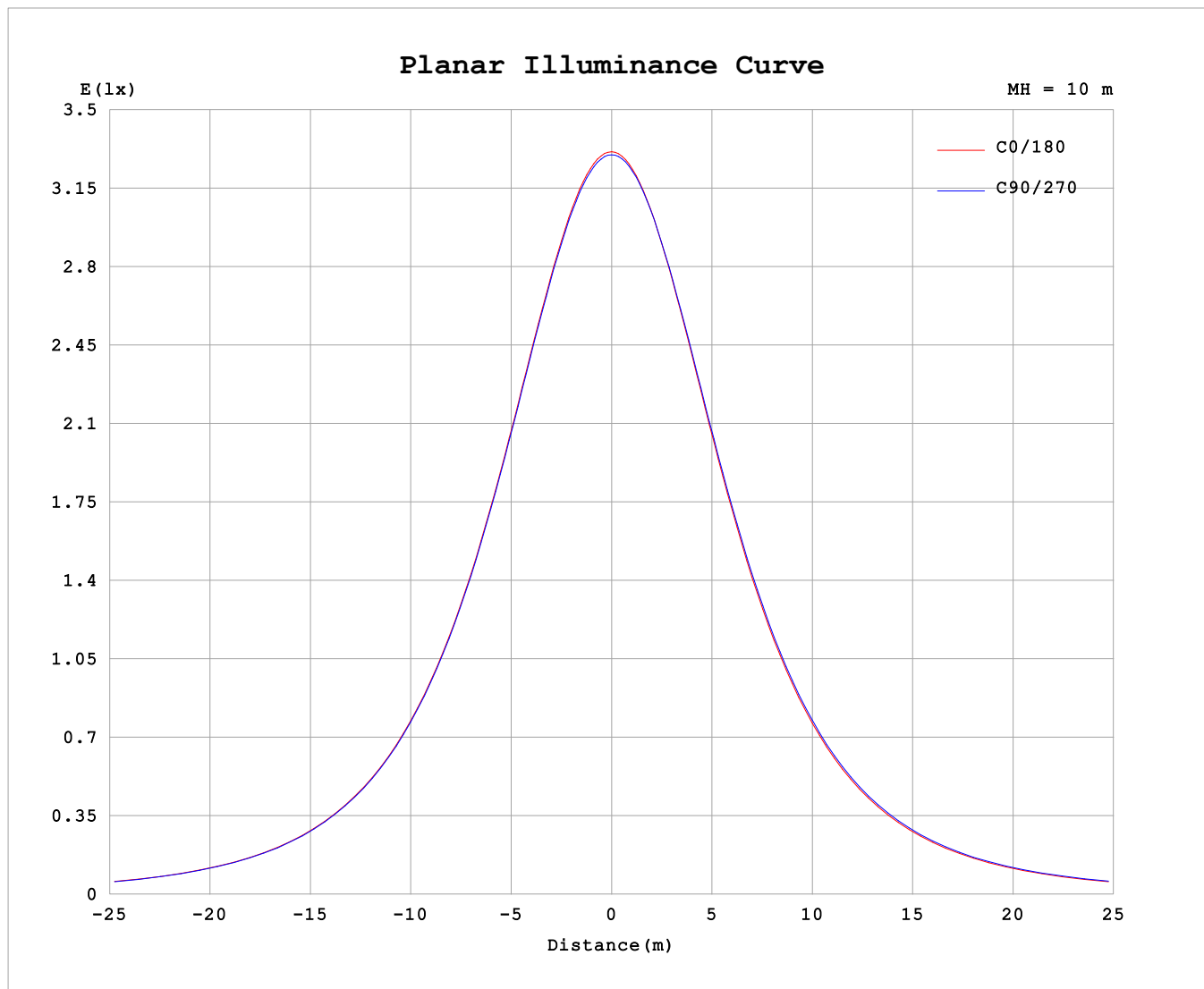
AvgL	cd/m2
L_0~180 (65) av	13256
L_0~180 (75) av	13046
L_0~180 (85) av	14248
L_90~270 (65) av	13461
L_90~270 (75) av	13399
L_90~270 (85) av	14388
L_45 (65) av	13329
L_45 (75) av	13203
L_45 (85) av	14491

Standard: GB/T 29293-2012

C Range: 0 - 360DEG  
C Interval: 30.0DEG  
Test Speed: HIGH  
Temperature:25.3℃  
Operators:  
Test Date:2025-04-29

γ Range: 0 - 180DEG  
γ Interval: 1.0DEG  
Test System:EVERFINE GO-2000B\_V1 SYSTEM V2.00.488  
Humidity:65.0%  
Test Distance:6.360m [K=1.0000]  
Remarks:

## Planar Illuminance Curve



C Range: 0 - 360DEG  
C Interval: 30.0DEG  
Test Speed: HIGH  
Temperature: 25.3 °C  
Operators:  
Test Date: 2025-04-29

$\gamma$  Range: 0 - 180DEG  
 $\gamma$  Interval: 1.0DEG  
Test System: EVERFINE GO-2000B\_V1 SYSTEM V2.00.488  
Humidity: 65.0%  
Test Distance: 6.360m [K=1.0000]  
Remarks:

## LUMINOUS DISTRIBUTION INTENSITY DATA

Test:U:24.00V I:0.6218A P:14.92W PF:1.000 Freq:0Hz Lamp Flux:1018.91x1 lm		
NAME: SF33-24V-5050-84-6500k-80	TYPE:	WEIGHT:
SPEC.:	DIM.: Length=1m	SERIAL No.:
MFR.: OLYMPIA lighting	SUR.:	Shielding Angle:

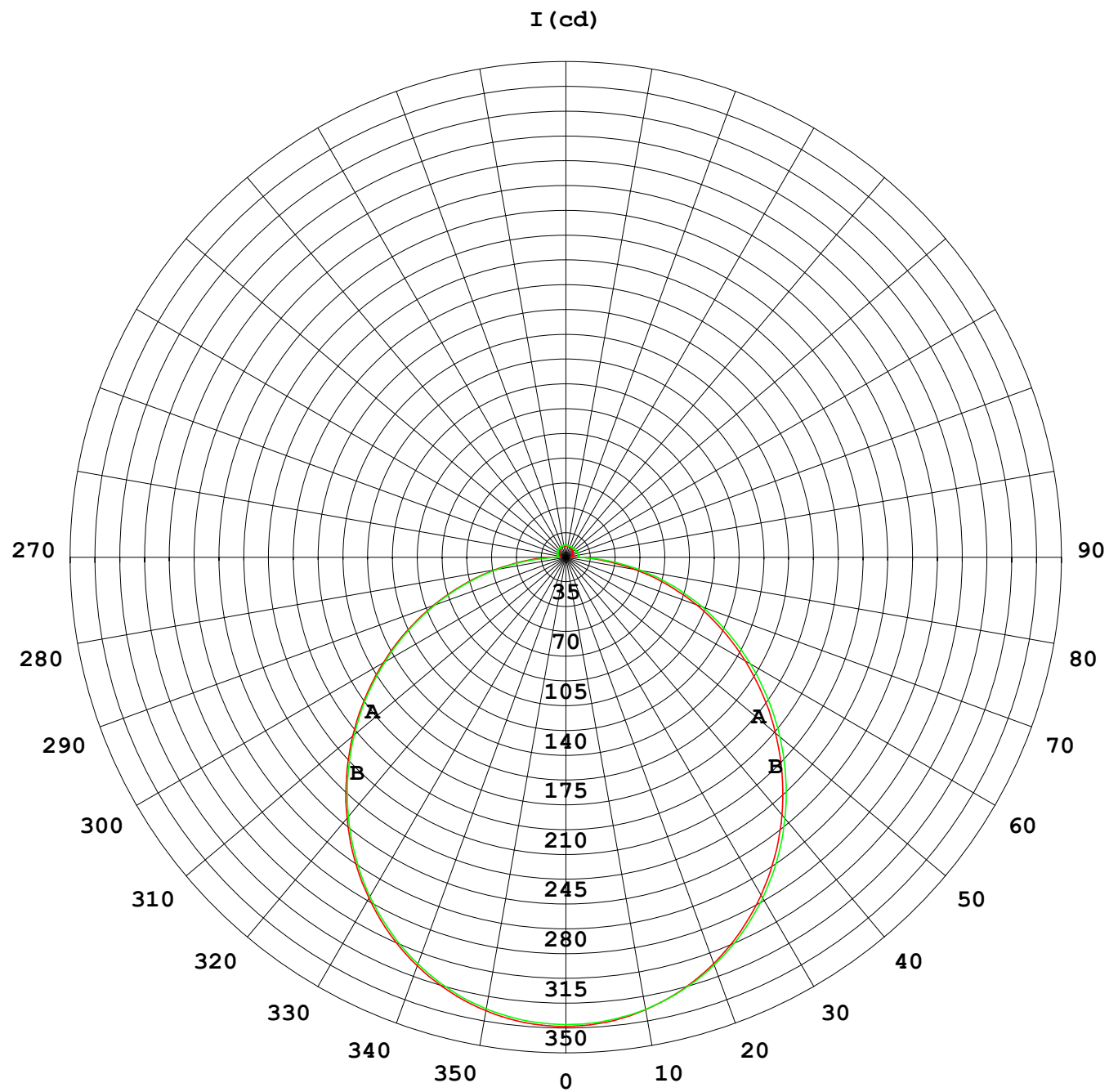
Table--1

UNIT: cd

C (DEG) γ (DEG)	0	30	60	90	120	150	180	210	240	270	300	330							
0	331	331	331	331	331	331	331	331	331	331	331	331							
5	330	330	330	330	329	329	329	329	329	329	330	330							
10	325	325	325	325	324	324	324	324	325	325	326	326							
15	317	318	318	317	316	316	316	316	317	318	318	318							
20	307	307	307	307	305	305	305	306	306	307	308	308							
25	294	294	294	293	292	292	291	292	293	294	295	295							
30	278	279	278	278	276	276	275	276	277	279	280	279							
35	260	261	260	260	257	257	257	258	259	261	262	262							
40	240	241	240	240	237	238	237	238	239	242	243	242							
45	219	220	219	218	215	216	216	217	218	220	222	221							
50	196	197	196	196	193	193	193	195	195	198	200	199							
55	173	174	173	172	169	170	170	171	171	175	177	175							
60	149	149	149	148	145	146	146	147	147	151	152	151							
65	124	125	124	123	120	122	122	123	122	127	128	127							
70	99.6	100	99.8	98.7	95.6	97.8	98.1	98.1	98.3	103	104	102							
75	75.0	75.6	75.2	74.0	71.5	73.3	73.6	74.1	74.9	78.6	79.3	77.5							
80	50.7	51.2	50.7	49.3	47.6	49.0	49.5	50.9	52.1	54.5	54.9	53.1							
85	28.4	28.3	26.6	24.6	24.1	25.3	26.2	27.8	29.1	30.6	30.8	30.0							
90	11.4	11.0	8.36	5.68	7.27	10.3	11.1	12.2	11.1	9.04	11.5	12.2							
95	4.37	5.09	5.90	5.68	5.37	4.98	3.98	6.10	8.01	8.87	7.79	5.29							
100	4.69	5.34	5.97	5.94	5.88	5.58	4.35	6.28	8.13	8.91	7.86	5.50							
105	5.02	5.59	6.06	6.24	6.36	6.04	4.65	6.43	8.21	8.96	7.94	5.73							
110	5.36	5.86	6.24	6.55	6.69	6.31	4.95	6.57	8.27	8.96	8.02	5.94							
115	5.68	6.14	6.45	6.83	6.90	6.57	5.24	6.69	8.28	8.89	8.04	6.14							
120	6.00	6.41	6.62	7.06	7.11	6.84	5.53	6.81	8.28	8.80	8.01	6.32							
125	6.29	6.66	6.81	7.26	7.32	7.07	5.82	6.93	8.27	8.69	7.98	6.50							
130	6.58	6.73	6.98	7.43	7.53	7.28	6.11	7.06	8.26	8.58	7.96	6.65							
135	6.84	6.68	7.14	7.58	7.72	7.48	6.40	7.20	8.26	8.49	7.92	6.75							
140	7.07	6.88	7.29	7.73	7.92	7.66	6.69	7.36	8.27	8.40	7.92	6.91							
145	7.30	7.07	7.41	7.85	8.08	7.83	6.97	7.50	8.28	8.33	7.92	7.07							
150	7.54	7.27	7.55	8.27	8.24	8.01	7.26	7.67	8.31	8.34	7.93	7.22							
155	7.77	7.46	8.06	8.38	8.38	8.18	7.55	7.84	8.37	8.35	8.07	7.40							
160	8.00	7.66	8.24	8.50	8.50	8.33	7.82	7.99	8.42	8.34	8.12	7.58							
165	8.14	7.87	8.40	8.60	8.58	8.46	8.07	8.14	8.48	8.41	8.18	7.81							
170	7.93	8.45	8.53	8.67	8.64	8.55	7.92	8.31	8.53	8.45	8.30	8.20							
175	8.07	8.55	8.66	8.71	8.68	8.58	8.07	8.47	8.64	8.53	8.45	8.40							
180	8.16	8.57	8.74	8.71	8.66	8.58	8.15	8.58	8.75	8.70	8.66	8.56							

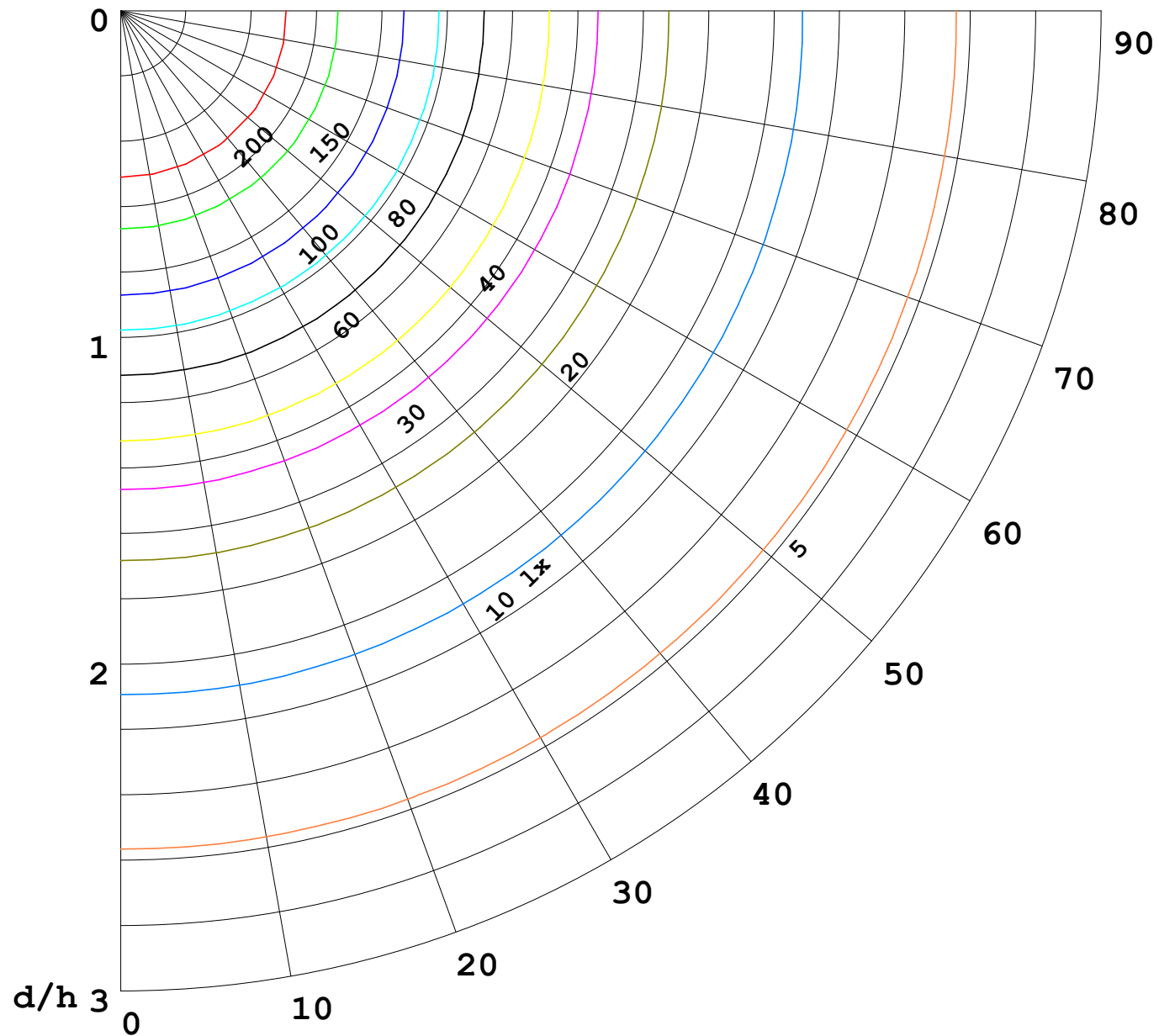
C Range: 0 - 360DEG  
C Interval: 30.0DEG  
Test Speed: HIGH  
Temperature:25.3℃  
Operators:  
Test Date:2025-04-29

γ Range: 0 - 180DEG  
γ Interval: 1.0DEG  
Test System:EVERFINE GO-2000B\_V1 SYSTEM V2.00.488  
Humidity:65.0%  
Test Distance:6.360m [K=1.0000]  
Remarks:



1000 lm

$\kappa = 1$



F = 1000 lm  
 K = 0.7  
 Hcc = 0.8 m  
 Hfc = 0.0 m  
 Eave = 100 lx

	Pcc	Pw	Pfc
—————	70	50	30
—————	50	30	20

