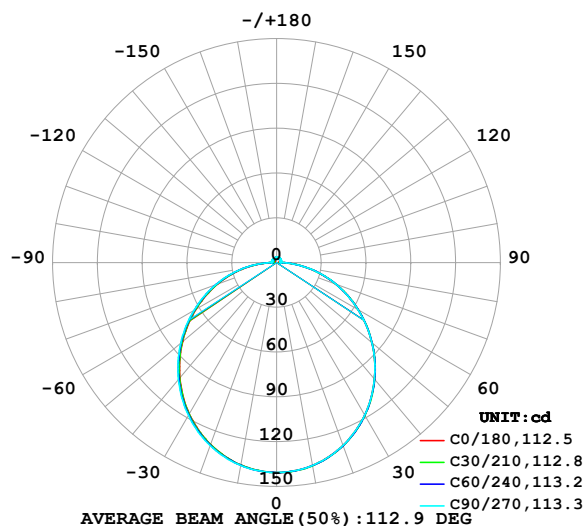


LUMINAIRE PHOTOMETRIC TEST REPORT

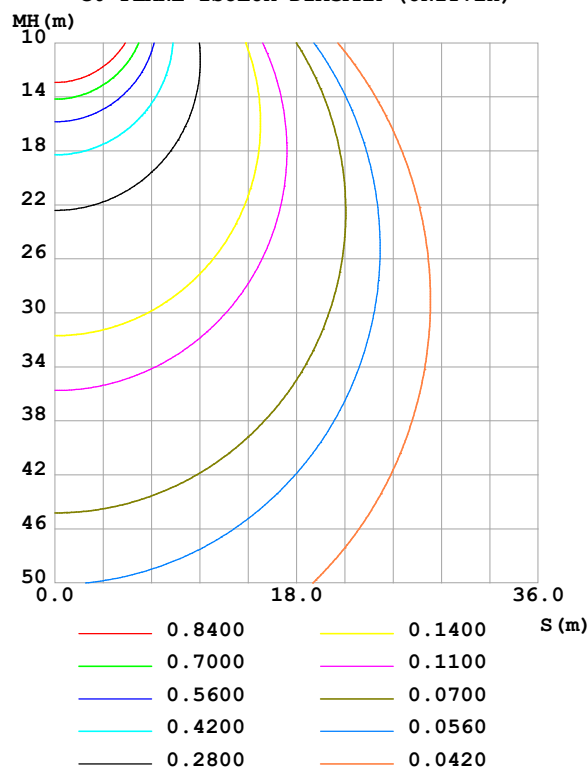
Test:U:24.00V I:0.6241A P:14.98W PF:1.000 Freq:0Hz Lamp Flux:433.145x1 lm		
NAME: SF33-24V-5050-84-P	TYPE:	WEIGHT:
SPEC.:	DIM.: Length=1m	SERIAL No.:
MFR.: OLympia lighting	SUR.:	Shielding Angle:

DATA OF LAMP		PHOTOMETRIC DATA				Eff: 28.92 lm/W
MODEL	5050	I _{max} (cd)	140.6	S/MH(C0/180)	1.24	
NOMINAL POWER(W)	15	LOR(%)	100.0	S/MH(C90/270)	1.25	
RATED VOLTAGE(V)	24	TOTAL FLUX(lm)	433.15	η UP,DN(C0-180)	2.1,47.7	
NOMINAL FLUX(lm)	433.145	CIE CLASS	DIRECT	η UP,DN(C180-360)	2.2,48.0	
LAMPS INSIDE	1	η up(%)	4.3	CIBSE SHR NOM	1.25	
TEST VOLTAGE(V)		η down(%)	95.7	CIBSE SHR MAX	1.35	

LUMINOUS INTENSITY DISTRIBUTION DIAGRAM



C0 PLANE ISOLUX DIAGRAM (UNIT:lx)



C Range: 0 - 360DEG
C Interval: 30.0DEG
Test Speed: HIGH
Temperature: 25.3 °C
Operators:
Test Date: 2025-04-28

γ Range: 0 - 180DEG
γ Interval: 1.0DEG
Test System: EVERFINE GO-2000B_V1 SYSTEM V2.00.488
Humidity: 65.0%
Test Distance: 6.360m [K=1.0000]
Remarks:

ZONAL FLUX DIAGRAM

ZONAL FLUX DIAGRAM:

γ	C0	C45	C90	C135	C180	C225	C270	C315	γ	Φ zone	Φ total	%lum, lamp
10	138.0	138.2	138.0	137.8	137.7	137.8	138.1	138.2	0- 10	13.30	13.30	3.07,3.07
20	130.3	130.5	130.3	129.9	129.6	129.9	130.4	130.7	10- 20	38.01	51.31	11.8,11.8
30	118.0	118.2	118.0	117.4	117.0	117.5	118.2	118.5	20- 30	57.40	108.7	25.1,25.1
40	102.0	102.2	102.0	101.3	100.8	101.5	102.4	102.7	30- 40	68.99	177.7	41,41
50	83.27	83.54	83.28	82.67	82.23	82.99	83.91	84.20	40- 50	71.63	249.3	57.6,57.6
60	62.97	63.23	63.05	62.67	62.34	63.15	63.97	64.10	50- 60	65.61	314.9	72.7,72.7
70	42.02	42.27	42.23	42.24	42.05	42.86	43.52	43.31	60- 70	52.40	367.4	84.8,84.8
80	21.21	21.34	21.40	21.69	21.62	22.52	23.06	22.51	70- 80	34.05	401.4	92.7,92.7
90	3.898	3.427	2.517	3.442	3.826	4.074	3.620	4.343	80- 90	13.14	414.5	95.7,95.7
100	2.018	2.402	2.604	2.319	1.764	2.789	3.559	2.762	90-100	2.849	417.4	96.4,96.4
110	2.309	2.619	2.820	2.649	2.131	2.915	3.591	2.899	100-110	2.782	420.2	97,97
120	2.586	2.827	3.057	3.052	2.428	3.024	3.548	2.975	110-120	2.837	423.0	97.7,97.7
130	2.838	3.013	3.236	3.222	2.677	3.117	3.496	3.050	120-130	2.707	425.7	98.3,98.3
140	3.054	3.151	3.374	3.371	2.928	3.224	3.452	3.086	130-140	2.434	428.2	98.8,98.8
150	3.256	3.302	3.527	3.522	3.159	3.345	3.466	3.169	140-150	2.053	430.2	99.3,99.3
160	3.447	3.485	3.660	3.648	3.390	3.476	3.550	3.342	150-160	1.581	431.8	99.7,99.7
170	3.493	3.661	3.735	3.713	3.493	3.587	3.608	3.555	160-170	1.007	432.8	99.9,99.9
180	3.580	3.701	3.724	3.713	3.577	3.700	3.718	3.702	170-180	0.3476	433.1	100,100
DEG	LUMINOUS INTENSITY:cd									UNIT:lm		

Conical surface Flux(90deg): 213.76 lm

%lum = 49.3%

%lamp = 49.3%

Conical surface Flux(130deg): 343.17 lm

%lum = 79.2%

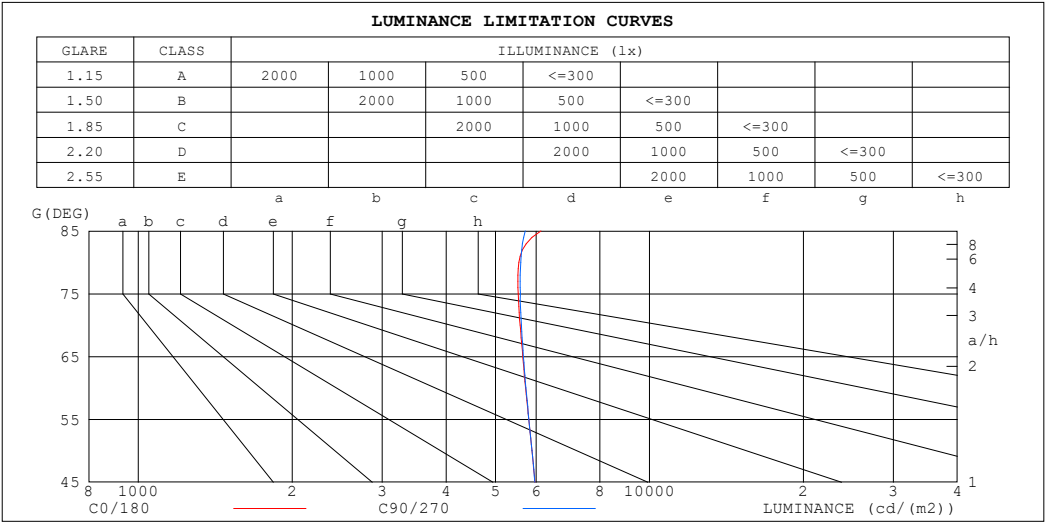
%lamp = 79.2%

C Range: 0 - 360DEG
 C Interval: 30.0DEG
 Test Speed: HIGH
 Temperature:25.3℃
 Operators:
 Test Date:2025-04-28

γ Range: 0 - 180DEG
 γ Interval: 1.0DEG
 Test System:EVERFINE GO-2000B_V1 SYSTEM V2.00.488
 Humidity:65.0%
 Test Distance:6.360m [K=1.0000]
 Remarks:

LUMINANCE LIMITATION CURVES

Test:U:24.00V I:0.6241A P:14.98W PF:1.000 Freq:0Hz Lamp Flux:433.145x1 lm		
NAME: SF33-24V-5050-84-P	TYPE:	WEIGHT:
SPEC.:	DIM.: Length=1m	SERIAL No.:
MFR.: OLympia lighting	SUR.:	Shielding Angle:



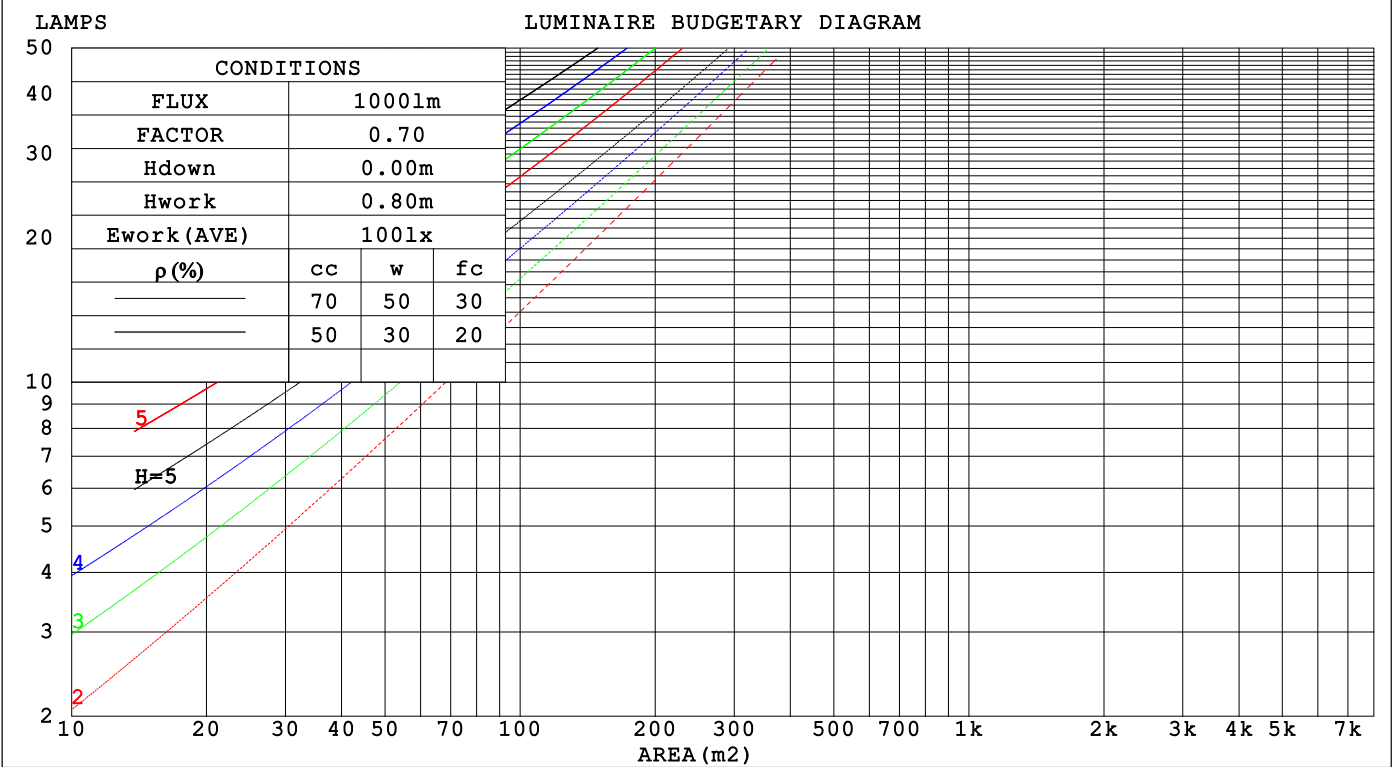
LUMINANCE cd/(m2)		
G (DEG)	C0/180	C90/270
85	6129	5712
80	5550	5600
75	5535	5590
70	5584	5612
65	5650	5667
60	5723	5732
55	5804	5807
50	5887	5888
45	5969	5970

C Range: 0 - 360DEG	γ Range: 0 - 180DEG
C Interval: 30.0DEG	γ Interval: 1.0DEG
Test Speed: HIGH	Test System:EVERFINE GO-2000B_V1 SYSTEM V2.00.488
Temperature:25.3℃	Humidity:65.0%
Operators:	Test Distance:6.360m [K=1.0000]
Test Date:2025-04-28	Remarks:

CU AND LUMINAIRE BUDGETARY ESTIMATE DIAGRAM

Test:U:24.00V I:0.6241A P:14.98W PF:1.000 Freq:0Hz		
Lamp Flux:433.145x1 lm		
NAME: SF33-24V-5050-84-P	TYPE:	WEIGHT:
SPEC.:	DIM.: Length=1m	SERIAL No.:
MFR.: OLYMPIA lighting	SUR.:	Shielding Angle:

pcc	80%			70%			50%			30%			10%			0
p _w	50%	30%	10%	50%	30%	10%	50%	30%	10%	50%	30%	10%	50%	30%	10%	0
p _{fc}	20%			20%			20%			20%			20%			0
RCR	RCR:Room Cavity Ratio															



C Range: 0 - 360DEG

C Interval: 30.0DEG

Test Speed: HIGH

Temperature:25.3℃

Operators:

Test Date:2025-04-28

γ Range: 0 - 180DEG

γ Interval: 1.0DEG

Test System:EVERFINE GO-2000B_V1 SYSTEM V2.00.488

Humidity:65.0%

Test Distance:6.360m [K=1.0000]

Remarks:

WEC AND CCEC

Test:U:24.00V I:0.6241A P:14.98W PF:1.000 Freq:0Hz Lamp Flux:433.145x1 lm		
NAME: SF33-24V-5050-84-P	TYPE:	WEIGHT:
SPEC.:	DIM.: Length=1m	SERIAL No.:
MFR.: OLympia lighting	SUR.:	Shielding Angle:

pcc	80%			70%			50%			30%			10%			0														
pw	50%	30%	10%	50%	30%	10%	50%	30%	10%	50%	30%	10%	50%	30%	10%	0														
pfc	20%			20%			20%			20%			20%			0														
RCR	RCR:Room Cavity Ratio															Wall Exitance Coefficients(WEC)														
0.0																														
1.0	.327	.186	.059	.318	.182	.058	.303	.174	.055	.288	.166	.053	.275	.159	.051															
2.0	.301	.165	.051	.294	.162	.050	.280	.156	.048	.267	.150	.047	.255	.144	.045															
3.0	.276	.147	.044	.269	.144	.043	.257	.139	.042	.245	.134	.041	.234	.130	.040															
4.0	.253	.132	.039	.247	.129	.038	.236	.125	.037	.226	.121	.037	.216	.117	.036															
5.0	.233	.119	.034	.228	.117	.034	.218	.113	.033	.208	.110	.033	.200	.107	.032															
6.0	.215	.108	.031	.211	.106	.031	.202	.103	.030	.193	.100	.030	.185	.098	.029															
7.0	.200	.099	.028	.196	.098	.028	.188	.095	.027	.180	.092	.027	.173	.090	.026															
8.0	.186	.091	.026	.183	.090	.025	.175	.088	.025	.168	.085	.025	.162	.083	.024															
9.0	.175	.084	.024	.171	.083	.023	.164	.081	.023	.158	.079	.023	.152	.077	.022															
10.0	.164	.079	.022	.161	.078	.022	.155	.076	.021	.149	.074	.021	.144	.072	.021															

pcc	80%			70%			50%			30%			10%			0
pw	50%	30%	10%	50%	30%	10%	50%	30%	10%	50%	30%	10%	50%	30%	10%	0
pfc	20%			20%			20%			20%			20%			0
RCR	RCR:Room Cavity Ratio						Ceiling Cavity Exitance Coefficients (CCEC)									
0.0	.223	.223	.223	.191	.191	.191	.130	.130	.130	.075	.075	.075	.024	.024	.024	
1.0	.214	.189	.166	.184	.162	.143	.126	.112	.099	.072	.065	.057	.023	.021	.019	
2.0	.207	.165	.130	.177	.142	.112	.121	.098	.078	.070	.057	.046	.022	.018	.015	
3.0	.199	.148	.107	.171	.127	.093	.117	.089	.065	.068	.052	.038	.022	.017	.013	
4.0	.191	.135	.091	.164	.116	.079	.113	.081	.056	.065	.047	.033	.021	.015	.011	
5.0	.184	.124	.080	.158	.108	.070	.109	.075	.049	.063	.044	.029	.020	.014	.010	
6.0	.177	.116	.073	.152	.101	.063	.105	.070	.045	.061	.041	.027	.020	.014	.009	
7.0	.170	.109	.067	.146	.095	.058	.101	.066	.041	.059	.039	.025	.019	.013	.008	
8.0	.163	.103	.062	.140	.090	.054	.097	.063	.039	.057	.037	.023	.018	.012	.008	
9.0	.157	.099	.059	.135	.086	.052	.094	.060	.037	.055	.036	.022	.018	.012	.007	
10.0	.151	.094	.056	.130	.082	.049	.090	.058	.035	.053	.034	.021	.017	.011	.007	

C Range: 0 - 360DEG
C Interval: 30.0DEG
Test Speed: HIGH
Temperature:25.3℃
Operators:
Test Date:2025-04-28

γ Range: 0 - 180DEG
γ Interval: 1.0DEG
Test System:EVERFINE GO-2000B_V1 SYSTEM V2.00.488
Humidity:65.0%
Test Distance:6.360m [K=1.0000]
Remarks:

UGR(Unified Glare Rating) Table

Test:U:24.00V I:0.6241A P:14.98W PF:1.000 Freq:0Hz Lamp Flux:433.145x1 lm											
NAME: SF33-24V-5050-84-P					TYPE:			WEIGHT:			
SPEC.:					DIM.: Length=1m			SERIAL No.:			
MFR.: OLympia lighting					SUR.:			Shielding Angle:			
ceiling/cavity	0.7	0.7	0.5	0.5	0.3	0.7	0.7	0.5	0.5	0.3	
walls	0.5	0.3	0.5	0.3	0.3	0.5	0.3	0.5	0.3	0.3	
working plane	0.2	0.2	0.2	0.2	0.2	0.2	0.2	0.2	0.2	0.2	
Room dimensions		Viewed crosswise					Viewed endwise				
x = 2H y = 2H	2H	19.6	21.1	20.0	21.4	21.7	19.6	21.1	20.0	21.4	21.7
	3H	21.3	22.7	21.7	23.0	23.3	21.3	22.7	21.7	23.0	23.3
	4H	22.1	23.4	22.4	23.7	24.0	22.1	23.4	22.4	23.7	24.0
	6H	22.7	23.9	23.1	24.2	24.6	22.7	23.9	23.1	24.3	24.6
	8H	22.9	24.1	23.3	24.5	24.8	22.9	24.1	23.3	24.5	24.9
	12H	23.1	24.3	23.5	24.6	25.0	23.1	24.3	23.5	24.6	25.0
4H	2H	20.3	21.6	20.7	21.9	22.3	20.3	21.6	20.6	21.9	22.3
	3H	22.2	23.3	22.6	23.7	24.1	22.2	23.3	22.6	23.7	24.1
	4H	23.0	24.1	23.5	24.5	24.9	23.0	24.1	23.5	24.5	24.9
	6H	23.8	24.7	24.3	25.2	25.6	23.8	24.7	24.3	25.2	25.6
	8H	24.1	25.0	24.6	25.4	25.9	24.1	25.0	24.6	25.4	25.9
	12H	24.4	25.2	24.9	25.6	26.1	24.4	25.2	24.9	25.6	26.1
8H	4H	23.4	24.2	23.8	24.7	25.2	23.4	24.2	23.9	24.7	25.2
	6H	24.3	25.0	24.8	25.5	26.0	24.3	25.0	24.8	25.5	26.0
	8H	24.7	25.4	25.3	25.9	26.4	24.7	25.4	25.3	25.9	26.4
	12H	25.1	25.7	25.7	26.2	26.8	25.1	25.7	25.6	26.2	26.8
12H	4H	23.4	24.2	23.9	24.7	25.2	23.4	24.2	23.9	24.7	25.2
	6H	24.4	25.1	24.9	25.6	26.1	24.4	25.1	24.9	25.6	26.1
	8H	24.9	25.5	25.4	26.0	26.5	24.9	25.4	25.4	26.0	26.5
Variations with the observer position at spacings(CIE Pub.117):											
S = 1.0H		+ 0.1 / - 0.2					+ 0.1 / - 0.2				
1.5H		+ 0.2 / - 0.3					+ 0.2 / - 0.3				
2.0H		+ 0.1 / - 0.3					+ 0.1 / - 0.3				

CIE Pub.117, 433.1 lm Total Lamp Luminous Flux Correct (8log(F/F0) = -2.9)
Area: 0.022 m2

C Range: 0 - 360DEG
C Interval: 30.0DEG
Test Speed: HIGH
Temperature:25.3℃
Operators:
Test Date:2025-04-28

γ Range: 0 - 180DEG
γ Interval: 1.0DEG
Test System:EVERFINE GO-2000B_V1 SYSTEM V2.00.488
Humidity:65.0%
Test Distance:6.360m [K=1.0000]
Remarks:

UTILIZATION FACTORS TABLE

Test:U:24.00V I:0.6241A P:14.98W PF:1.000 Freq:0Hz Lamp Flux:433.145x1 lm		
NAME: SF33-24V-5050-84-P	TYPE:	WEIGHT:
SPEC.:	DIM.: Length=1m	SERIAL No.:
MFR.: OLympia lighting	SUR.:	Shielding Angle:

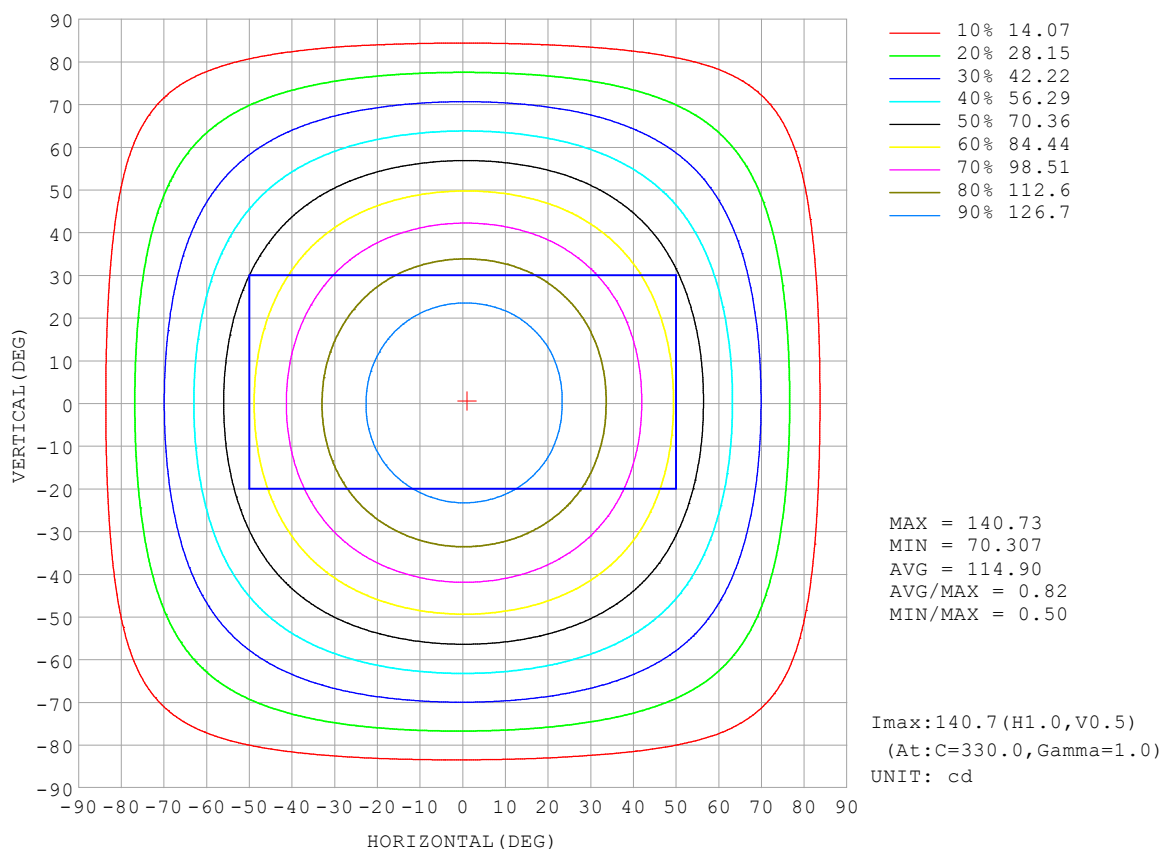
REFLECTANCE										
Ceiling	0.8	0.8	0.8	0.7	0.7	0.7	0.5	0.5	0.5	0
Walls	0.7	0.5	0.3	0.7	0.5	0.3	0.7	0.5	0.3	0
Working plane	0.2	0.2	0.2	0.2	0.2	0.2	0.2	0.2	0.2	0
ROOM INDEX	UTILIZATION FACTORS (PERCENT) $k(RI) \times RCR = 5$									
$k = 0.60$	55	44	37	55	43	37	53	43	36	30
0.80	65	53	46	64	53	46	62	52	45	38
1.00	73	62	54	72	61	54	69	62	53	46
1.25	81	70	62	79	69	62	76	67	61	53
1.50	86	75	68	84	74	67	80	72	66	57
2.00	92	83	77	90	82	76	86	79	74	65
2.50	97	88	82	94	87	81	90	83	78	69
3.00	100	93	87	97	91	85	93	87	83	73
4.00	104	98	93	101	96	91	96	92	88	78
5.00	107	101	97	104	99	95	99	95	91	81
ROOM INDEX	UF (total)									Direct
According to DIN EN 13032-2 2004			Suspended					SHRNOM = 1.25		

C Range: 0 - 360DEG
 C Interval: 30.0DEG
 Test Speed: HIGH
 Temperature: 25.3 °C
 Operators:
 Test Date: 2025-04-28

γ Range: 0 - 180DEG
 γ Interval: 1.0DEG
 Test System: EVERFINE GO-2000B_V1 SYSTEM V2.00.488
 Humidity: 65.0%
 Test Distance: 6.360m [K=1.0000]
 Remarks:

ISOCANDELA DIAGRAM

Test:U:24.00V I:0.6241A P:14.98W PF:1.000 Freq:0Hz Lamp Flux:433.145x1 lm		
NAME: SF33-24V-5050-84-P	TYPE:	WEIGHT:
SPEC.:	DIM.: Length=1m	SERIAL No.:
MFR.: OLympia lighting	SUR.:	Shielding Angle:

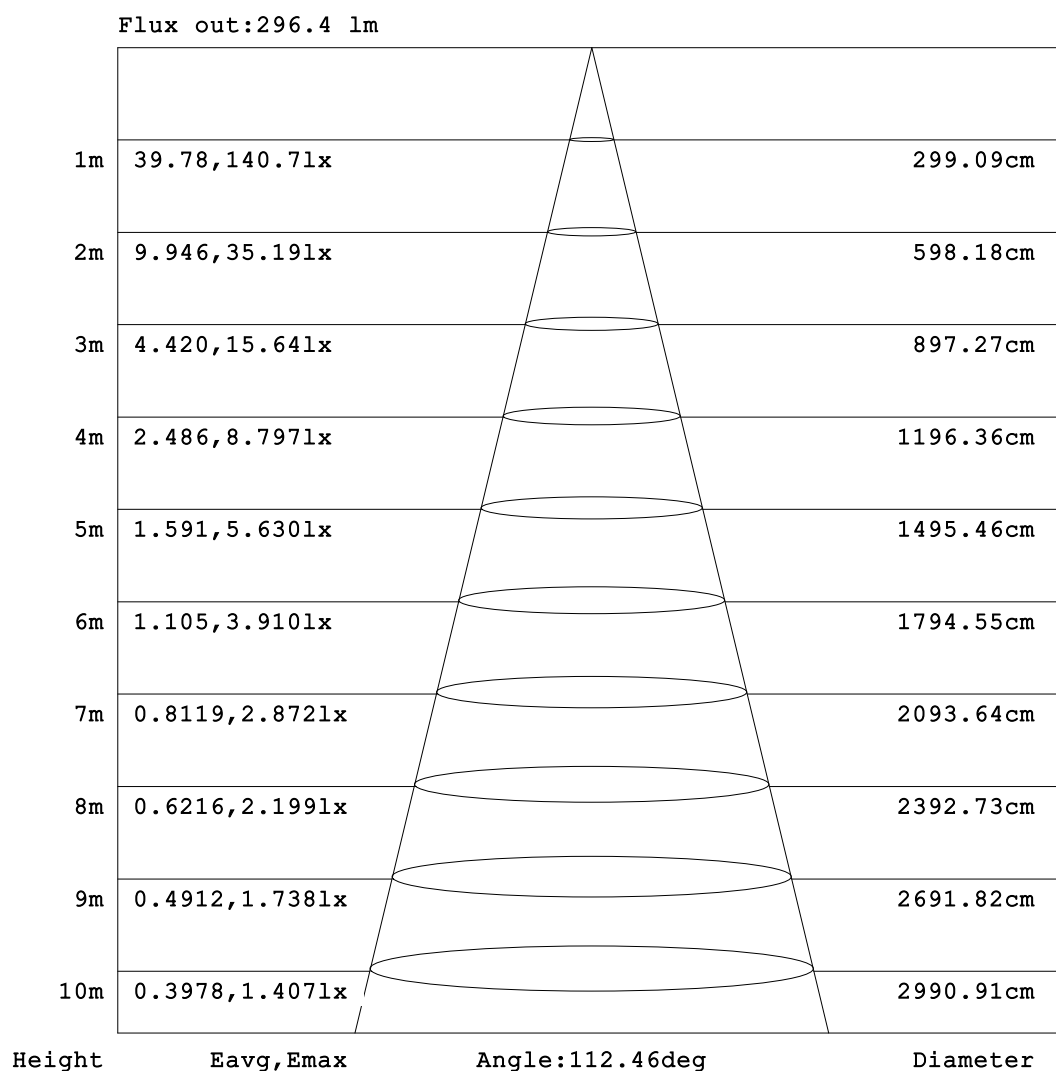


C Range: 0 - 360DEG
C Interval: 30.0DEG
Test Speed: HIGH
Temperature:25.3℃
Operators:
Test Date:2025-04-28

γ Range: 0 - 180DEG
γ Interval: 1.0DEG
Test System:EVERFINE GO-2000B_V1 SYSTEM V2.00.488
Humidity:65.0%
Test Distance:6.360m [K=1.0000]
Remarks:

AAI Figure

Test:U:24.00V I:0.6241A P:14.98W PF:1.000 Freq:0Hz Lamp Flux:433.145x1 lm		
NAME: SF33-24V-5050-84-P	TYPE:	WEIGHT:
SPEC.:	DIM.: Length=1m	SERIAL No.:
MFR.: OLympia lighting	SUR.:	Shielding Angle:



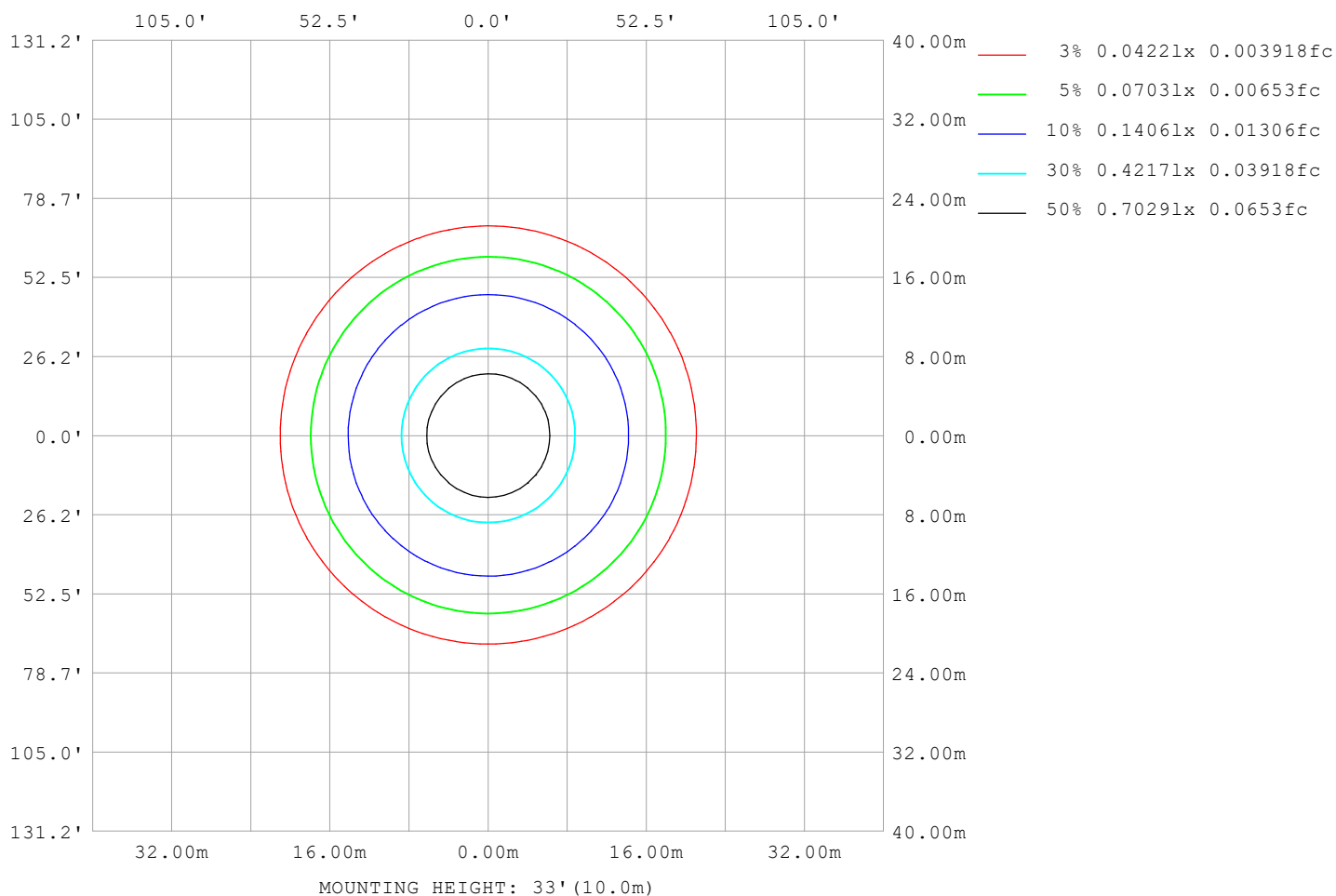
Note:The Curves indicate the illuminated area and the average illumination when the luminaire is at different distance.

C Range: 0 - 360DEG
C Interval: 30.0DEG
Test Speed: HIGH
Temperature:25.3℃
Operators:
Test Date:2025-04-28

γ Range: 0 - 180DEG
γ Interval: 1.0DEG
Test System:EVERFINE GO-2000B_V1 SYSTEM V2.00.488
Humidity:65.0%
Test Distance:6.360m [K=1.0000]
Remarks:

ISOLUX DIAGRAM

Test:U:24.00V I:0.6241A P:14.98W PF:1.000 Freq:0Hz Lamp Flux:433.145x1 lm		
NAME: SF33-24V-5050-84-P	TYPE:	WEIGHT:
SPEC.:	DIM.: Length=1m	SERIAL No.:
MFR.: OLympia lighting	SUR.:	Shielding Angle:



C Range: 0 - 360DEG
C Interval: 30.0DEG
Test Speed: HIGH
Temperature: 25.3°C
Operators:
Test Date: 2025-04-28

γ Range: 0 - 180DEG
γ Interval: 1.0DEG
Test System: EVERFINE GO-2000B_V1 SYSTEM V2.00.488
Humidity: 65.0%
Test Distance: 6.360m [K=1.0000]
Remarks:

LED Avg.L Report

Test:U:24.00V I:0.6241A P:14.98W PF:1.000 Freq:0Hz Lamp Flux:433.145x1 lm		
NAME: SF33-24V-5050-84-P	TYPE:	WEIGHT:
SPEC.:	DIM.: Length=1m	SERIAL No.:
MFR.: OLympia lighting	SUR.:	Shielding Angle:

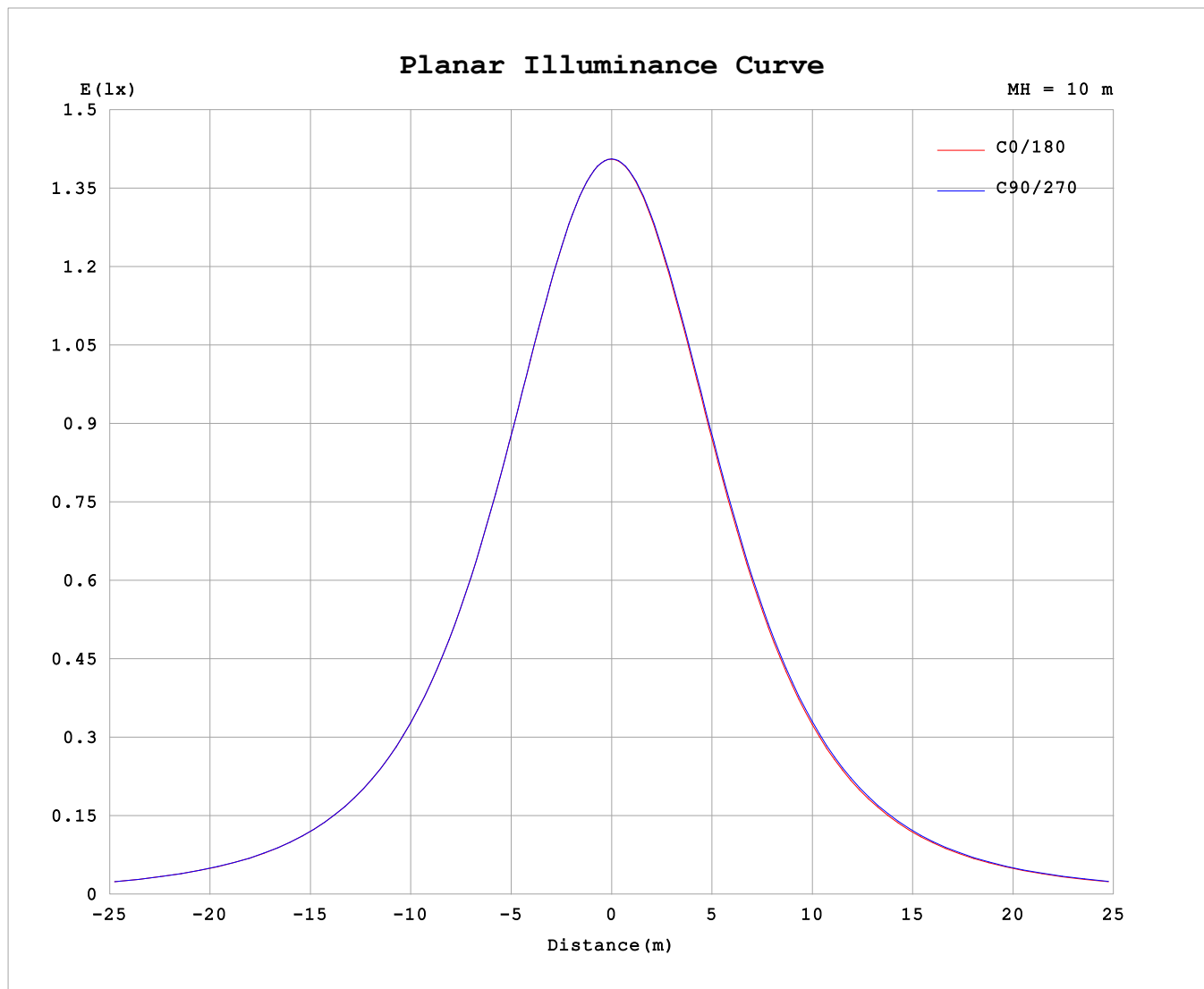
AvgL	cd/m2
L_0~180 (65) av	5634
L_0~180 (75) av	5567
L_0~180 (85) av	5989
L_90~270 (65) av	5726
L_90~270 (75) av	5718
L_90~270 (85) av	6181
L_45 (65) av	5705
L_45 (75) av	5686
L_45 (85) av	6169

Standard: GB/T 29293-2012

C Range: 0 - 360DEG
C Interval: 30.0DEG
Test Speed: HIGH
Temperature:25.3℃
Operators:
Test Date:2025-04-28

γ Range: 0 - 180DEG
γ Interval: 1.0DEG
Test System:EVERFINE GO-2000B_V1 SYSTEM V2.00.488
Humidity:65.0%
Test Distance:6.360m [K=1.0000]
Remarks:

Planar Illuminance Curve



C Range: 0 - 360DEG
C Interval: 30.0DEG
Test Speed: HIGH
Temperature: 25.3 °C
Operators:
Test Date: 2025-04-28

γ Range: 0 - 180DEG
 γ Interval: 1.0DEG
Test System: EVERFINE GO-2000B_V1 SYSTEM V2.00.488
Humidity: 65.0%
Test Distance: 6.360m [K=1.0000]
Remarks:

LUMINOUS DISTRIBUTION INTENSITY DATA

Test:U:24.00V I:0.6241A P:14.98W PF:1.000 Freq:0Hz Lamp Flux:433.145x1 lm		
NAME: SF33-24V-5050-84-P	TYPE:	WEIGHT:
SPEC.:	DIM.: Length=1m	SERIAL No.:
MFR.: Olym pia lighting	SUR.:	Shielding Angle:

Table--1

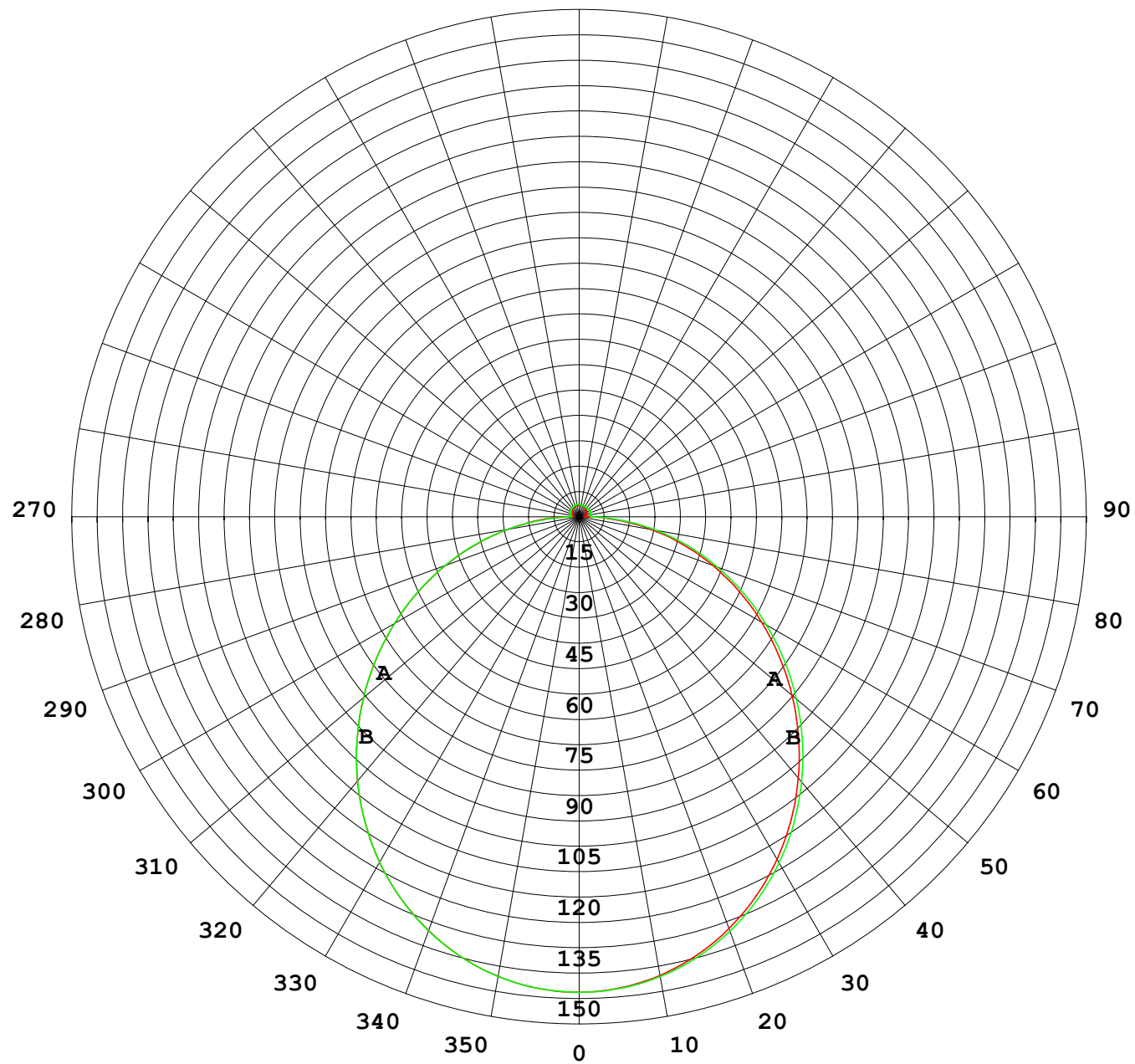
UNIT: cd

C (DEG) γ (DEG)	0	30	60	90	120	150	180	210	240	270	300	330							
0	141	141	141	141	141	141	141	141	141	141	141	141							
5	140	140	140	140	140	140	140	140	140	140	140	140							
10	138	138	138	138	138	138	138	138	138	138	138	138							
15	135	135	135	135	135	134	134	134	135	135	135	135							
20	130	131	130	130	130	130	130	130	130	130	131	131							
25	125	125	125	125	124	124	124	124	125	125	125	125							
30	118	118	118	118	118	117	117	117	118	118	119	118							
35	110	111	111	110	110	110	109	110	110	111	111	111							
40	102	102	102	102	102	101	101	101	102	102	103	103							
45	92.9	93.2	93.1	92.9	92.4	92.0	91.8	92.1	92.9	93.4	93.9	93.6							
50	83.3	83.6	83.5	83.3	82.9	82.5	82.2	82.6	83.4	83.9	84.4	84.0							
55	73.3	73.5	73.5	73.3	73.0	72.6	72.4	72.8	73.6	74.1	74.5	74.1							
60	63.0	63.3	63.2	63.1	62.8	62.5	62.3	62.8	63.5	64.0	64.3	63.9							
65	52.5	52.8	52.7	52.7	52.6	52.3	52.2	52.6	53.4	53.8	54.0	53.5							
70	42.0	42.3	42.2	42.2	42.4	42.1	42.0	42.5	43.2	43.5	43.6	43.0							
75	31.5	31.8	31.7	31.8	32.1	31.9	31.9	32.4	33.1	33.3	33.2	32.5							
80	21.2	21.4	21.3	21.4	21.7	21.7	21.6	22.2	22.9	23.1	22.9	22.2							
85	11.8	11.8	11.0	11.0	11.1	11.2	11.2	11.7	12.6	12.7	12.6	12.4							
90	3.90	3.83	3.02	2.52	2.98	3.91	3.83	4.09	4.06	3.62	4.29	4.40							
95	1.88	2.15	2.45	2.54	2.40	2.33	1.76	2.37	3.11	3.54	3.12	2.23							
100	2.02	2.26	2.54	2.60	2.39	2.25	1.76	2.42	3.16	3.56	3.19	2.33							
105	2.17	2.39	2.63	2.71	2.50	2.31	1.89	2.42	3.17	3.59	3.25	2.42							
110	2.31	2.51	2.73	2.82	2.76	2.54	2.13	2.58	3.25	3.59	3.28	2.52							
115	2.46	2.63	2.82	2.95	2.99	2.83	2.30	2.68	3.28	3.58	3.28	2.60							
120	2.59	2.75	2.90	3.06	3.11	2.99	2.43	2.75	3.30	3.55	3.28	2.67							
125	2.72	2.86	2.99	3.16	3.19	3.09	2.56	2.82	3.32	3.52	3.28	2.74							
130	2.84	2.95	3.07	3.24	3.26	3.18	2.68	2.90	3.33	3.50	3.28	2.82							
135	2.95	2.99	3.16	3.31	3.33	3.26	2.80	2.98	3.36	3.47	3.29	2.82							
140	3.05	3.08	3.23	3.37	3.40	3.34	2.93	3.07	3.38	3.45	3.29	2.88							
145	3.16	3.15	3.30	3.44	3.46	3.43	3.05	3.15	3.42	3.44	3.30	2.96							
150	3.26	3.24	3.37	3.53	3.54	3.50	3.16	3.23	3.46	3.47	3.32	3.02							
155	3.35	3.32	3.49	3.59	3.60	3.57	3.28	3.32	3.50	3.52	3.45	3.10							
160	3.45	3.40	3.57	3.66	3.66	3.63	3.39	3.41	3.55	3.55	3.50	3.19							
165	3.52	3.47	3.63	3.72	3.70	3.69	3.49	3.49	3.58	3.58	3.54	3.28							
170	3.49	3.65	3.68	3.74	3.72	3.70	3.49	3.56	3.62	3.61	3.59	3.52							
175	3.55	3.68	3.70	3.74	3.73	3.70	3.56	3.64	3.67	3.65	3.65	3.61							
180	3.58	3.69	3.72	3.72	3.72	3.70	3.58	3.68	3.72	3.72	3.72	3.69							

C Range: 0 - 360DEG
C Interval: 30.0DEG
Test Speed: HIGH
Temperature:25.3℃
Operators:
Test Date:2025-04-28

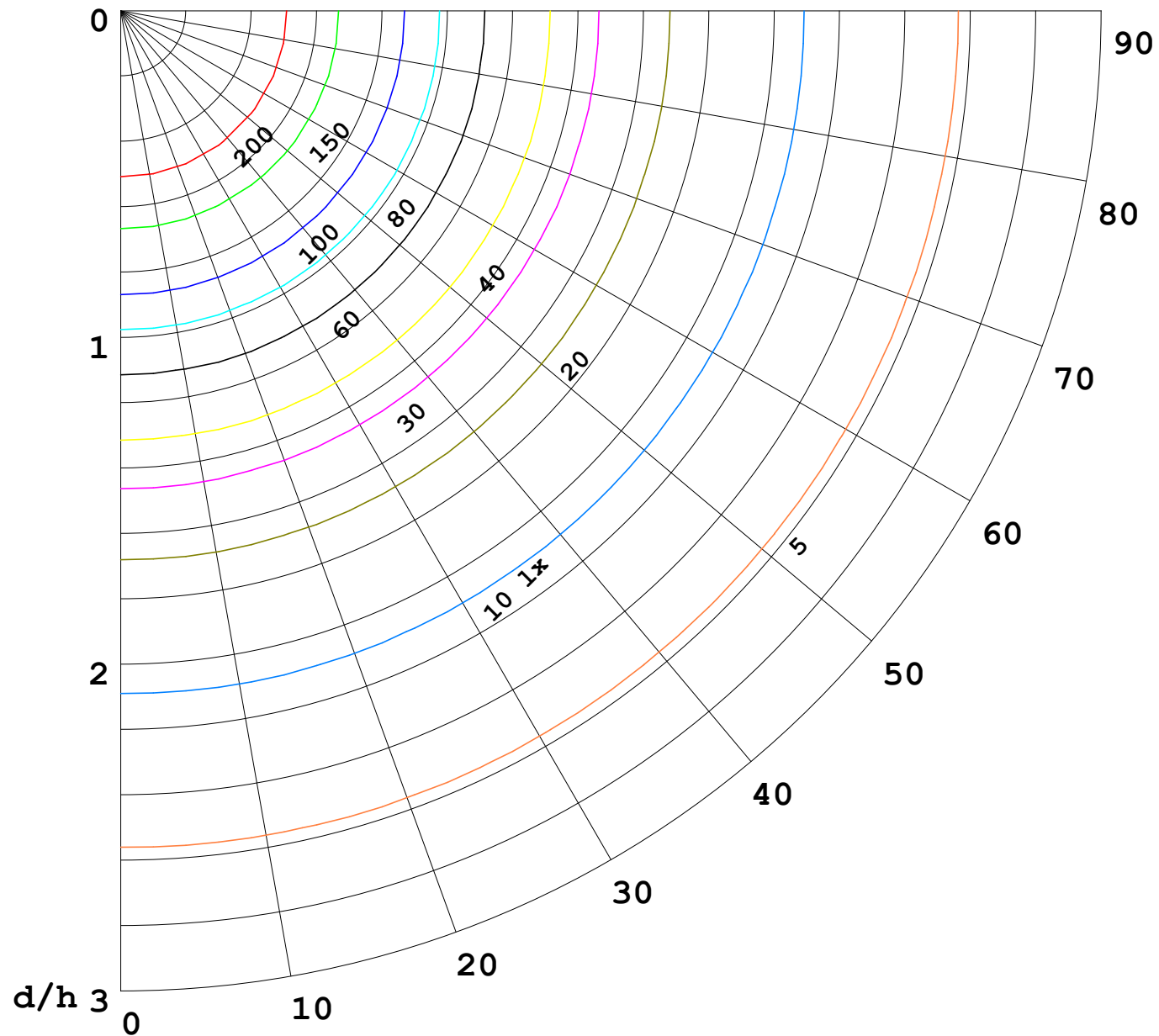
γ Range: 0 - 180DEG
γ Interval: 1.0DEG
Test System:EVERFINE GO-2000B_V1 SYSTEM V2.00.488
Humidity:65.0%
Test Distance:6.360m [K=1.0000]
Remarks:

I (cd)



1000 lm

$\kappa = 1$



F = 1000 lm
 K = 0.7
 Hcc = 0.8 m
 Hfc = 0.0 m
 Eave = 100 lx

	Pcc	Pw	Pfc
—————	70	50	30
—————	50	30	20

