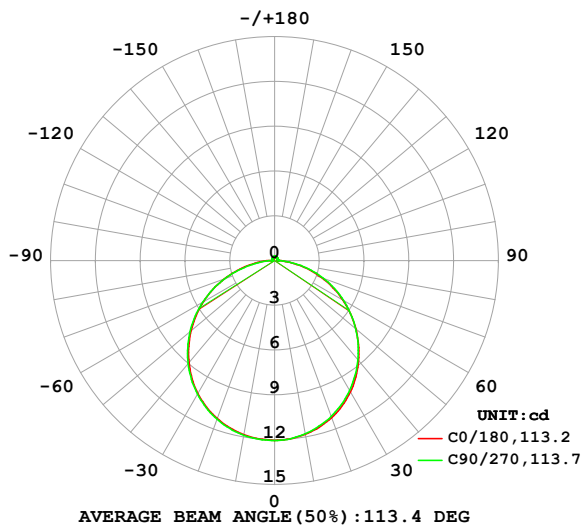


LUMINAIRE PHOTOMETRIC TEST REPORT

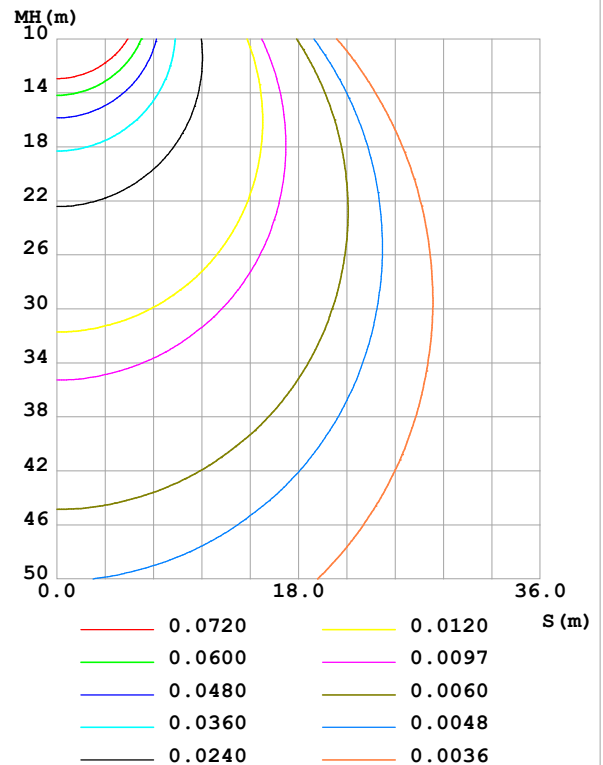
Test:U:24.00V I:0.2893A P:6.943W PF:1.000 Freq:0Hz Lamp Flux:36.6255x1 lm		
NAME: SF28-24V-5050-72-DMX4-RGBW(3000K)	TYPE:	WEIGHT:
SPEC.:	DIM.: Length=1m	SERIAL No.:
MFR.:	SUR.:	Shielding Angle:

DATA OF LAMP		PHOTOMETRIC DATA				Eff: 5.28 lm/W
MODEL		I _{max} (cd)	12.06	S/MH(C0/180)	1.27	
NOMINAL POWER(W)		LOR(%)	100.0	S/MH(C90/270)	1.28	
RATED VOLTAGE(V)		TOTAL FLUX(lm)	36.625	η UP,DN(C0-180)	1.9,47.6	
NOMINAL FLUX(lm)	36.6255	CIE CLASS	DIRECT	η UP,DN(C180-360)	1.8,48.7	
LAMPS INSIDE	1	η up (%)	3.7	CIBSE SHR NOM	1.25	
TEST VOLTAGE(V)		η down (%)	96.3	CIBSE SHR MAX	1.35	

LUMINOUS INTENSITY DISTRIBUTION DIAGRAM



C0 PLANE ISOLUX DIAGRAM (UNIT:lx)



C Range: 0 - 360DEG
C Interval: 22.5DEG
Test Speed: HIGH
Temperature:25.3℃
Operators:Cloud
Test Date:2024-10-19

γ Range: 0 - 180DEG
γ Interval: 1.0DEG
Test System:EVERFINE GO-2000B_V1 SYSTEM V2.00.488
Humidity:65.0%
Test Distance:6.360m [K=1.0000]
Remarks: BLUE

ZONAL FLUX DIAGRAM

ZONAL FLUX DIAGRAM:

γ	C0	C45	C90	C135	C180	C225	C270	C315	γ	Φ zone	Φ total	%lum,lamp
10	11.82	11.81	11.78	11.81	11.85	11.87	11.89	11.87	0- 10	1.140	1.140	3.11,3.11
20	11.20	11.16	11.10	11.17	11.25	11.32	11.31	11.28	10- 20	3.269	4.409	12,12
30	10.17	10.12	10.05	10.16	10.29	10.37	10.33	10.32	20- 30	4.967	9.376	25.6,25.6
40	8.754	8.752	8.689	8.815	8.929	9.060	9.014	8.984	30- 40	6.001	15.38	42,42
50	7.106	7.103	7.087	7.179	7.309	7.425	7.395	7.325	40- 50	6.239	21.62	59,59
60	5.277	5.304	5.337	5.381	5.503	5.568	5.558	5.469	50- 60	5.681	27.30	74.5,74.5
70	3.352	3.418	3.484	3.491	3.582	3.590	3.552	3.481	60- 70	4.423	31.72	86.6,86.6
80	1.488	1.558	1.616	1.612	1.678	1.606	1.514	1.513	70- 80	2.658	34.38	93.9,93.9
90	0.3118	0.3155	0.2607	0.3584	0.3940	0.3085	0.1703	0.2448	80- 90	0.9001	35.28	96.3,96.3
100	0.1700	0.1964	0.2367	0.2078	0.1671	0.1762	0.1877	0.1674	90-100	0.2277	35.51	96.9,96.9
110	0.1700	0.1964	0.2021	0.2020	0.1729	0.1877	0.2136	0.1819	100-110	0.1981	35.70	97.5,97.5
120	0.1815	0.1992	0.2021	0.2020	0.1873	0.1993	0.2223	0.1992	110-120	0.1920	35.90	98,98
130	0.2073	0.2050	0.2136	0.2135	0.2075	0.2137	0.2252	0.2222	120-130	0.1844	36.08	98.5,98.5
140	0.2189	0.2224	0.2309	0.2365	0.2276	0.2339	0.2425	0.2367	130-140	0.1711	36.25	99,99
150	0.2391	0.2397	0.2512	0.2539	0.2449	0.2513	0.2541	0.2511	140-150	0.1501	36.40	99.4,99.4
160	0.2650	0.2599	0.2656	0.2712	0.2680	0.2772	0.2743	0.2741	150-160	0.1193	36.52	99.7,99.7
170	0.2708	0.2743	0.2743	0.2799	0.2794	0.2830	0.2858	0.2886	160-170	0.0779	36.60	99.9,99.9
180	0.2794	0.2830	0.2887	0.2886	0.2794	0.2830	0.2858	0.2886	170-180	0.0269	36.63	100,100
DEG	LUMINOUS INTENSITY:cd									UNIT:lm		

Conical surface Flux(90deg): 18.518 lm

%lum = 50.6%

%lamp = 50.6%

Conical surface Flux(130deg): 29.704 lm

%lum = 81.1%

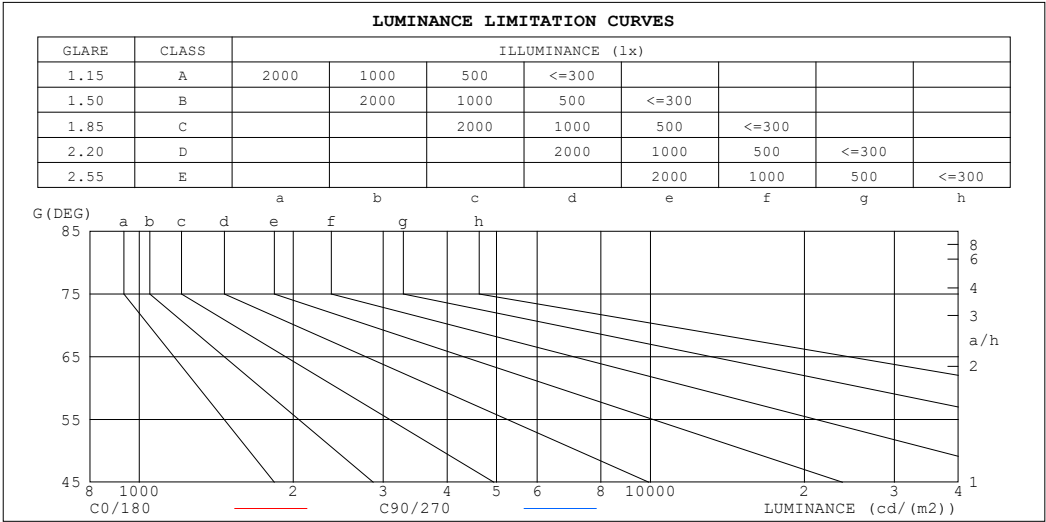
%lamp = 81.1%

C Range: 0 - 360DEG
 C Interval: 22.5DEG
 Test Speed: HIGH
 Temperature:25.3℃
 Operators:Cloud
 Test Date:2024-10-19

γ Range: 0 - 180DEG
 γ Interval: 1.0DEG
 Test System:EVERFINE GO-2000B_V1 SYSTEM V2.00.488
 Humidity:65.0%
 Test Distance:6.360m [K=1.0000]
 Remarks: BLUE

LUMINANCE LIMITATION CURVES

Test:U:24.00V I:0.2893A P:6.943W PF:1.000 Freq:0Hz Lamp Flux:36.6255x1 lm		
NAME: SF28-24V-5050-72-DMX4-RGBW(3000K)	TYPE:	WEIGHT:
SPEC.:	DIM.: Length=1m	SERIAL No.:
MFR.:	SUR.:	Shielding Angle:



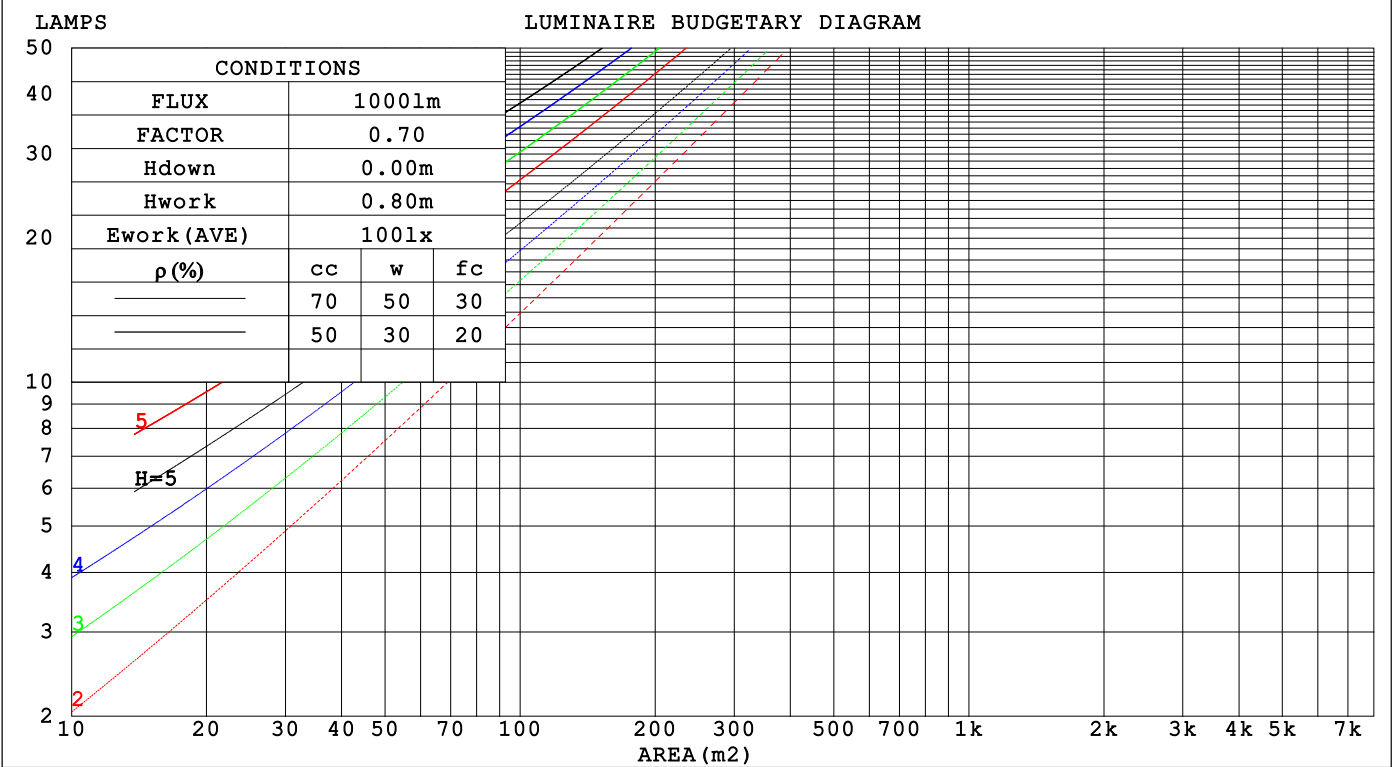
LUMINANCE cd/(m2)		
G (DEG)	C0/180	C90/270
85	508	531
80	505	547
75	546	576
70	578	599
65	603	615
60	622	628
55	637	638
50	652	648
45	663	658

C Range: 0 - 360DEG	γ Range: 0 - 180DEG
C Interval: 22.5DEG	γ Interval: 1.0DEG
Test Speed: HIGH	Test System:EVERFINE GO-2000B_V1 SYSTEM V2.00.488
Temperature:25.3℃	Humidity:65.0%
Operators:Cloud	Test Distance:6.360m [K=1.0000]
Test Date:2024-10-19	Remarks: BLUE

CU AND LUMINAIRE BUDGETARY ESTIMATE DIAGRAM

Test:U:24.00V I:0.2893A P:6.943W PF:1.000 Freq:0Hz		
Lamp Flux:36.6255x1 lm		
NAME: SF28-24V-5050-72-DMX4-RGBW(3000K)	TYPE:	WEIGHT:
SPEC.:	DIM.: Length=1m	SERIAL No.:
MFR.:	SUR.:	Shielding Angle:

pcc	80%			70%			50%			30%			10%			0
pw	50%	30%	10%	50%	30%	10%	50%	30%	10%	50%	30%	10%	50%	30%	10%	0
pfc	20%			20%			20%			20%			20%			0
RCR	RCR:Room Cavity Ratio			Coefficients of Utilization(CU)												
0.0	1.18	1.18	1.18	1.15	1.15	1.15	1.09	1.09	1.09	1.04	1.04	1.04	.99	.99	.99	.96
1.0	1.03	.98	.94	.00	.96	.92	.95	.92	.89	.90	.88	.85	.86	.84	.82	.80
2.0	.89	.82	.76	.87	.81	.75	.83	.77	.73	.79	.74	.71	.75	.72	.68	.66
3.0	.78	.70	.63	.76	.69	.62	.73	.66	.61	.69	.64	.59	.66	.62	.58	.55
4.0	.69	.60	.53	.67	.59	.53	.64	.57	.52	.62	.56	.51	.59	.54	.49	.47
5.0	.62	.53	.46	.60	.52	.45	.58	.50	.45	.55	.49	.44	.53	.47	.43	.41
6.0	.55	.46	.40	.54	.46	.40	.52	.45	.39	.50	.43	.38	.48	.42	.38	.36
7.0	.50	.41	.35	.49	.41	.35	.47	.40	.34	.46	.39	.34	.44	.38	.33	.31
8.0	.46	.37	.31	.45	.37	.31	.43	.36	.31	.42	.35	.30	.40	.34	.30	.28
9.0	.42	.34	.28	.41	.33	.28	.40	.33	.28	.38	.32	.27	.37	.31	.27	.25
10.0	.39	.31	.25	.38	.30	.25	.37	.30	.25	.36	.29	.25	.34	.29	.24	.23



C Range: 0 - 360DEG
C Interval: 22.5DEG
Test Speed: HIGH
Temperature:25.3℃
Operators:Cloud
Test Date:2024-10-19

γ Range: 0 - 180DEG
γ Interval: 1.0DEG
Test System:EVERFINE GO-2000B_V1 SYSTEM V2.00.488
Humidity:65.0%
Test Distance:6.360m [K=1.0000]
Remarks: BLUE

WEC AND CCEC

Test:U:24.00V I:0.2893A P:6.943W PF:1.000 Freq:0Hz Lamp Flux:36.6255x1 lm		
NAME: SF28-24V-5050-72-DMX4-RGBW(3000K)	TYPE:	WEIGHT:
SPEC.:	DIM.: Length=1m	SERIAL No.:
MFR.:	SUR.:	Shielding Angle:

pcc	80%			70%			50%			30%			10%			0														
pw	50%	30%	10%	50%	30%	10%	50%	30%	10%	50%	30%	10%	50%	30%	10%	0														
pfc	20%			20%			20%			20%			20%			0														
RCR	RCR:Room Cavity Ratio															Wall Exitance Coefficients(WEC)														
0.0																														
1.0	.318	.181	.057	.310	.177	.056	.294	.169	.054	.280	.162	.052	.267	.155	.050															
2.0	.296	.162	.050	.289	.159	.049	.275	.153	.047	.262	.147	.046	.251	.142	.045															
3.0	.272	.145	.043	.266	.142	.043	.254	.138	.042	.243	.133	.041	.232	.128	.040															
4.0	.251	.130	.038	.245	.128	.038	.234	.124	.037	.224	.120	.036	.215	.117	.036															
5.0	.231	.118	.034	.226	.116	.034	.216	.113	.033	.207	.109	.033	.199	.106	.032															
6.0	.214	.107	.031	.210	.106	.030	.201	.103	.030	.193	.100	.029	.185	.097	.029															
7.0	.199	.098	.028	.195	.097	.028	.187	.095	.027	.180	.092	.027	.173	.090	.026															
8.0	.186	.091	.026	.182	.090	.025	.175	.087	.025	.168	.085	.025	.162	.083	.024															
9.0	.174	.084	.024	.171	.083	.023	.164	.081	.023	.158	.079	.023	.152	.077	.022															
10.0	.164	.078	.022	.160	.077	.022	.155	.076	.021	.149	.074	.021	.144	.072	.021															

pcc	80%			70%			50%			30%			10%			0
pw	50%	30%	10%	50%	30%	10%	50%	30%	10%	50%	30%	10%	50%	30%	10%	0
pfc	20%			20%			20%			20%			20%			0
RCR	RCR:Room Cavity Ratio						Ceiling Cavity Exitance Coefficients (CCEC)									
0.0	.219	.219	.219	.187	.187	.187	.127	.127	.127	.073	.073	.073	.023	.023	.023	
1.0	.209	.184	.162	.179	.158	.139	.122	.109	.096	.070	.063	.056	.023	.020	.018	
2.0	.201	.160	.126	.172	.138	.109	.118	.095	.076	.068	.056	.045	.022	.018	.015	
3.0	.194	.143	.103	.166	.123	.089	.114	.086	.062	.066	.050	.037	.021	.016	.012	
4.0	.186	.130	.087	.160	.112	.075	.110	.078	.053	.063	.046	.031	.020	.015	.010	
5.0	.179	.119	.076	.153	.103	.066	.106	.072	.047	.061	.042	.028	.020	.014	.009	
6.0	.171	.111	.068	.147	.096	.059	.102	.067	.042	.059	.040	.025	.019	.013	.008	
7.0	.165	.104	.062	.142	.090	.054	.098	.063	.038	.057	.037	.023	.018	.012	.008	
8.0	.158	.099	.058	.136	.086	.050	.094	.060	.036	.055	.035	.021	.018	.012	.007	
9.0	.152	.094	.054	.131	.081	.047	.091	.057	.034	.053	.034	.020	.017	.011	.007	
10.0	.146	.089	.052	.126	.078	.045	.087	.055	.032	.051	.032	.019	.017	.011	.006	

C Range: 0 - 360DEG
C Interval: 22.5DEG
Test Speed: HIGH
Temperature:25.3℃
Operators:Cloud
Test Date:2024-10-19

γ Range: 0 - 180DEG
γ Interval: 1.0DEG
Test System:EVERFINE GO-2000B_V1 SYSTEM V2.00.488
Humidity:65.0%
Test Distance:6.360m [K=1.0000]
Remarks: BLUE

UGR(Unified Glare Rating) Table

Test:U:24.00V I:0.2893A P:6.943W PF:1.000 Freq:0Hz Lamp Flux:36.6255x1 lm											
NAME: SF28-24V-5050-72-DMX4-RGBW(3000K)					TYPE:			WEIGHT:			
SPEC.:					DIM.: Length=1m			SERIAL No.:			
MFR.:					SUR.:			Shielding Angle:			
ceiling/cavity	0.7	0.7	0.5	0.5	0.3	0.7	0.7	0.5	0.5	0.3	
walls	0.5	0.3	0.5	0.3	0.3	0.5	0.3	0.5	0.3	0.3	
working plane	0.2	0.2	0.2	0.2	0.2	0.2	0.2	0.2	0.2	0.2	
Room dimensions		Viewed crosswise					Viewed endwise				
x = 2H y = 2H	22.5	24.0	22.8	24.3	24.5	22.5	24.0	22.9	24.3	24.6	
	3H	24.1	25.4	24.4	25.7	26.1	24.2	25.5	24.5	25.8	26.1
	4H	24.7	26.0	25.1	26.3	26.7	24.8	26.1	25.2	26.5	26.8
	6H	25.2	26.4	25.6	26.7	27.1	25.4	26.6	25.7	26.9	27.3
	8H	25.3	26.5	25.7	26.9	27.3	25.5	26.7	25.9	27.1	27.4
	12H	25.5	26.6	25.9	27.0	27.4	25.7	26.8	26.1	27.2	27.6
4H	2H	23.1	24.4	23.5	24.7	25.1	23.2	24.4	23.5	24.8	25.1
	3H	24.9	26.0	25.3	26.4	26.8	25.0	26.1	25.4	26.5	26.8
	4H	25.6	26.7	26.1	27.1	27.5	25.8	26.8	26.2	27.2	27.6
	6H	26.3	27.2	26.7	27.6	28.0	26.4	27.3	26.9	27.8	28.2
	8H	26.5	27.3	26.9	27.8	28.2	26.7	27.5	27.1	28.0	28.4
	12H	26.7	27.4	27.1	27.9	28.4	26.8	27.6	27.3	28.1	28.6
8H	4H	25.9	26.8	26.4	27.2	27.7	26.0	26.9	26.5	27.3	27.8
	6H	26.7	27.4	27.2	27.9	28.4	26.9	27.6	27.4	28.0	28.6
	8H	27.0	27.7	27.5	28.2	28.7	27.2	27.8	27.7	28.3	28.9
	12H	27.3	27.9	27.8	28.4	28.9	27.5	28.0	28.0	28.5	29.1
12H	4H	26.0	26.7	26.4	27.2	27.7	26.1	26.8	26.5	27.3	27.8
	6H	26.8	27.4	27.3	27.9	28.4	26.9	27.6	27.4	28.1	28.6
	8H	27.2	27.7	27.7	28.2	28.8	27.3	27.9	27.8	28.4	28.9
Variations with the observer position at spacings(CIE Pub.117):											
S = 1.0H		+ 0.1 / - 0.2					+ 0.1 / - 0.2				
1.5H		+ 0.2 / - 0.3					+ 0.2 / - 0.3				
2.0H		+ 0.1 / - 0.3					+ 0.1 / - 0.3				

CIE Pub.117, 36.63 lm Total Lamp Luminous Flux Correct (8log(F/F0) = -11.5)
Area: 0.017 m2

C Range: 0 - 360DEG
C Interval: 22.5DEG
Test Speed: HIGH
Temperature:25.3℃
Operators:Cloud
Test Date:2024-10-19

γ Range: 0 - 180DEG
γ Interval: 1.0DEG
Test System:EVERFINE GO-2000B_V1 SYSTEM V2.00.488
Humidity:65.0%
Test Distance:6.360m [K=1.0000]
Remarks: BLUE

UTILIZATION FACTORS TABLE

Test:U:24.00V I:0.2893A P:6.943W PF:1.000 Freq:0Hz Lamp Flux:36.6255x1 lm		
NAME: SF28-24V-5050-72-DMX4-RGBW(3000K)	TYPE:	WEIGHT:
SPEC.:	DIM.: Length=1m	SERIAL No.:
MFR.:	SUR.:	Shielding Angle:

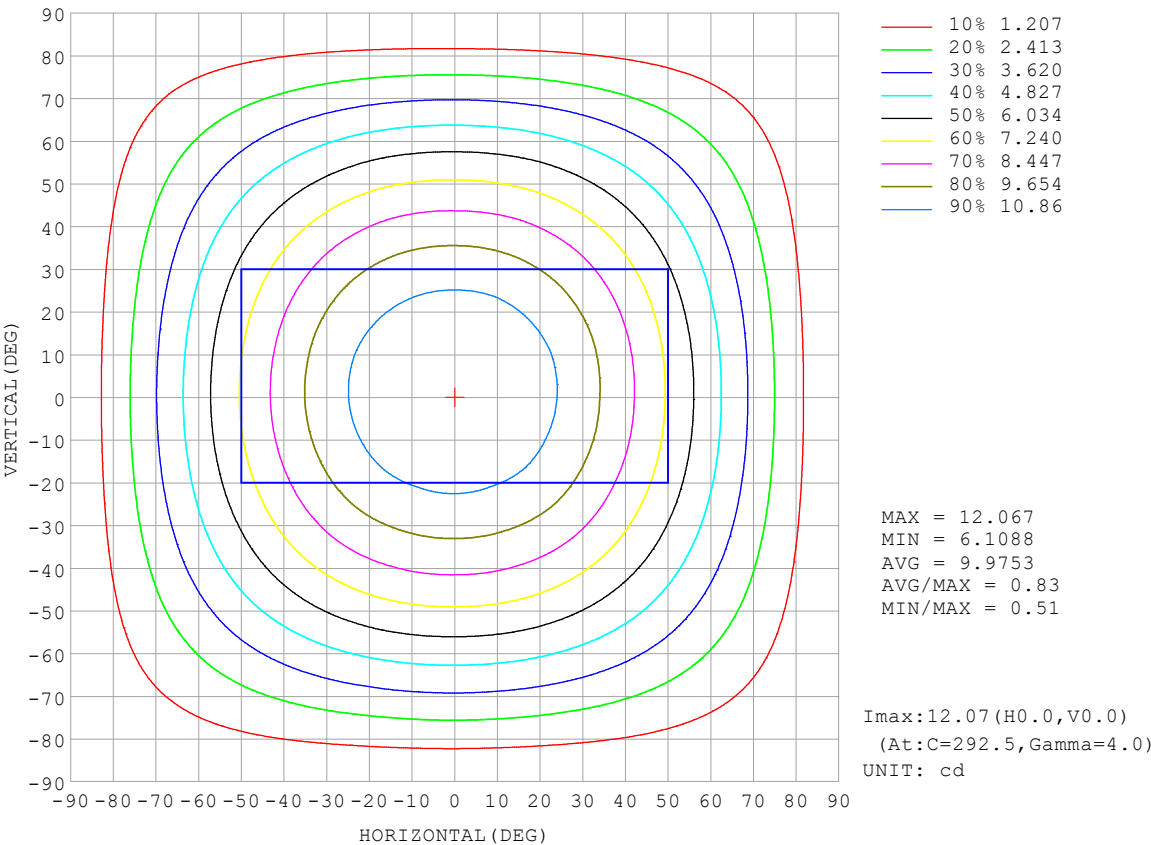
REFLECTANCE										
Ceiling	0.8	0.8	0.8	0.7	0.7	0.7	0.5	0.5	0.5	0
Walls	0.7	0.5	0.3	0.7	0.5	0.3	0.7	0.5	0.3	0
Working plane	0.2	0.2	0.2	0.2	0.2	0.2	0.2	0.2	0.2	0
ROOM INDEX	UTILIZATION FACTORS (PERCENT) $k(RI) \times RCR = 5$									
$k = 0.60$	56	44	37	55	44	37	54	43	37	30
0.80	66	54	47	65	54	46	63	53	46	39
1.00	74	63	55	73	62	55	70	63	54	47
1.25	81	70	63	80	70	63	77	68	62	54
1.50	86	76	69	84	75	68	81	73	67	59
2.00	93	84	78	91	83	77	87	80	75	66
2.50	97	89	83	95	87	82	90	84	79	70
3.00	101	93	88	98	92	86	94	88	84	74
4.00	105	99	94	102	97	92	97	93	89	79
5.00	107	102	98	104	100	96	99	96	92	82
ROOM INDEX	UF(total)									Direct
According to DIN EN 13032-2 2004			Suspended					SHRNOM = 1.25		

C Range: 0 - 360DEG
 C Interval: 22.5DEG
 Test Speed: HIGH
 Temperature: 25.3°C
 Operators: Cloud
 Test Date: 2024-10-19

γ Range: 0 - 180DEG
 γ Interval: 1.0DEG
 Test System: EVERFINE GO-2000B_V1 SYSTEM V2.00.488
 Humidity: 65.0%
 Test Distance: 6.360m [K=1.0000]
 Remarks: BLUE

ISOCANDELA DIAGRAM

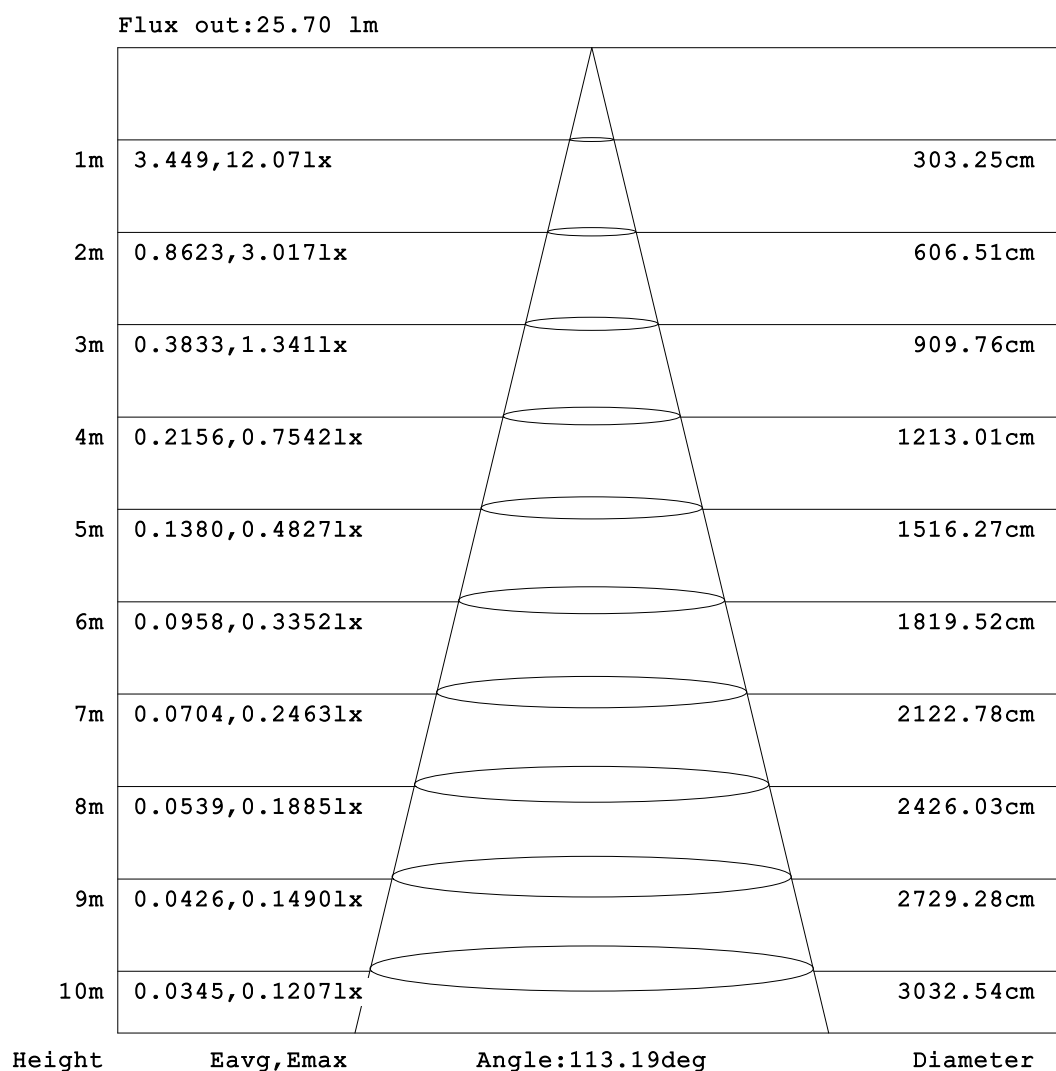
Test:U:24.00V I:0.2893A P:6.943W PF:1.000 Freq:0Hz Lamp Flux:36.6255x1 lm		
NAME: SF28-24V-5050-72-DMX4-RGBW(3000K)	TYPE:	WEIGHT:
SPEC.:	DIM.: Length=1m	SERIAL No.:
MFR.:	SUR.:	Shielding Angle:



C Range: 0 - 360DEG	γ Range: 0 - 180DEG
C Interval: 22.5DEG	γ Interval: 1.0DEG
Test Speed: HIGH	Test System:EVERFINE GO-2000B_V1 SYSTEM V2.00.488
Temperature:25.3℃	Humidity:65.0%
Operators:Cloud	Test Distance:6.360m [K=1.0000]
Test Date:2024-10-19	Remarks: BLUE

AAI Figure

Test:U:24.00V I:0.2893A P:6.943W PF:1.000 Freq:0Hz Lamp Flux:36.6255x1 lm		
NAME: SF28-24V-5050-72-DMX4-RGBW(3000K)	TYPE:	WEIGHT:
SPEC.:	DIM.: Length=1m	SERIAL No.:
MFR.:	SUR.:	Shielding Angle:



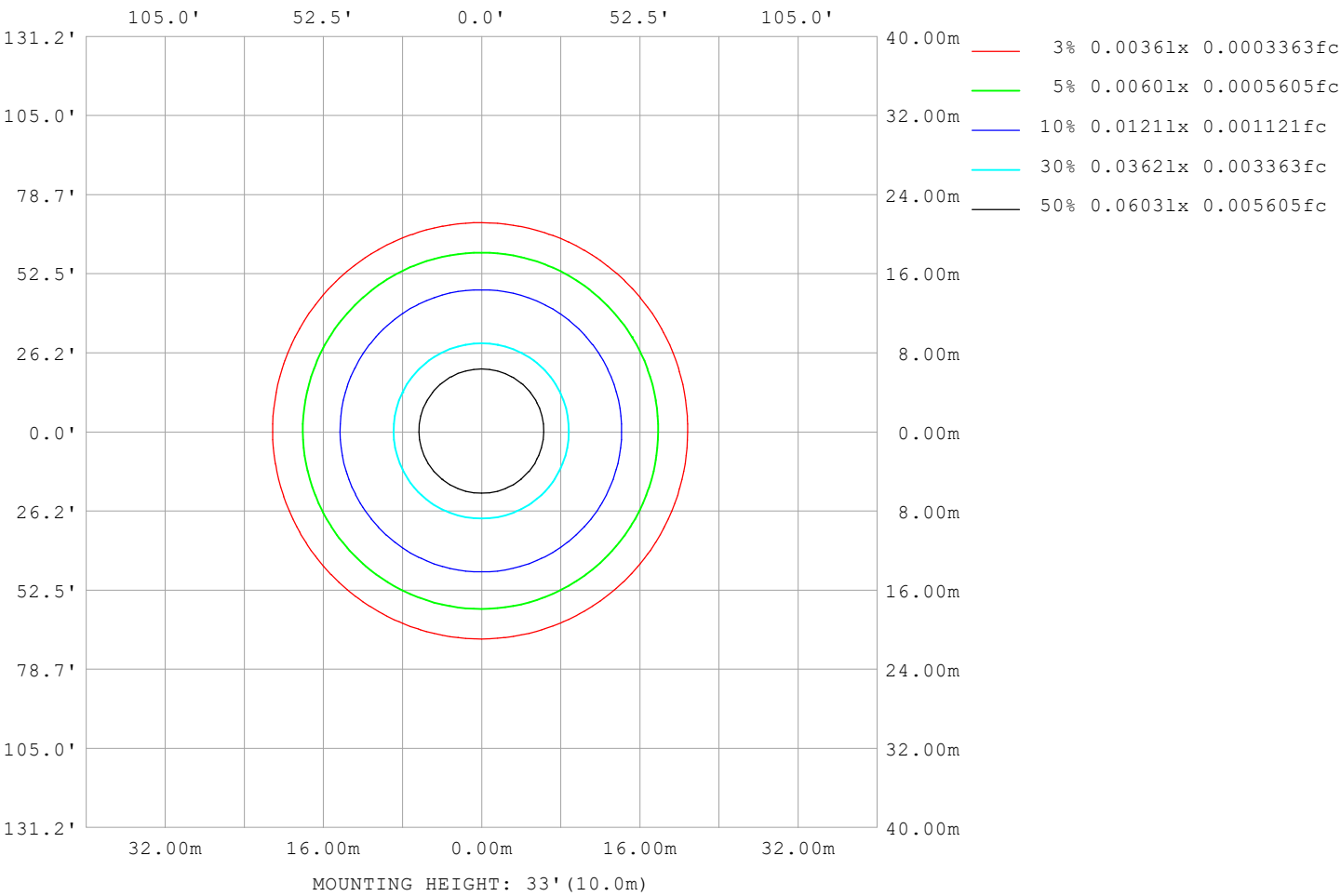
Note:The Curves indicate the illuminated area and the average illumination when the luminaire is at different distance.

C Range: 0 - 360DEG
C Interval: 22.5DEG
Test Speed: HIGH
Temperature:25.3℃
Operators:Cloud
Test Date:2024-10-19

γ Range: 0 - 180DEG
γ Interval: 1.0DEG
Test System:EVERFINE GO-2000B_V1 SYSTEM V2.00.488
Humidity:65.0%
Test Distance:6.360m [K=1.0000]
Remarks: BLUE

ISOLUX DIAGRAM

Test:U:24.00V I:0.2893A P:6.943W PF:1.000 Freq:0Hz Lamp Flux:36.6255x1 lm		
NAME: SF28-24V-5050-72-DMX4-RGBW(3000K)	TYPE:	WEIGHT:
SPEC.:	DIM.: Length=1m	SERIAL No.:
MFR.:	SUR.:	Shielding Angle:



C Range: 0 - 360DEG	γ Range: 0 - 180DEG
C Interval: 22.5DEG	γ Interval: 1.0DEG
Test Speed: HIGH	Test System:EVERFINE GO-2000B_V1 SYSTEM V2.00.488
Temperature:25.3℃	Humidity:65.0%
Operators:Cloud	Test Distance:6.360m [K=1.0000]
Test Date:2024-10-19	Remarks: BLUE

LED Avg.L Report

Test:U:24.00V I:0.2893A P:6.943W PF:1.000 Freq:0Hz Lamp Flux:36.6255x1 lm		
NAME: SF28-24V-5050-72-DMX4-RGBW(3000K)	TYPE:	WEIGHT:
SPEC.:	DIM.: Length=1m	SERIAL No.:
MFR.:	SUR.:	Shielding Angle:

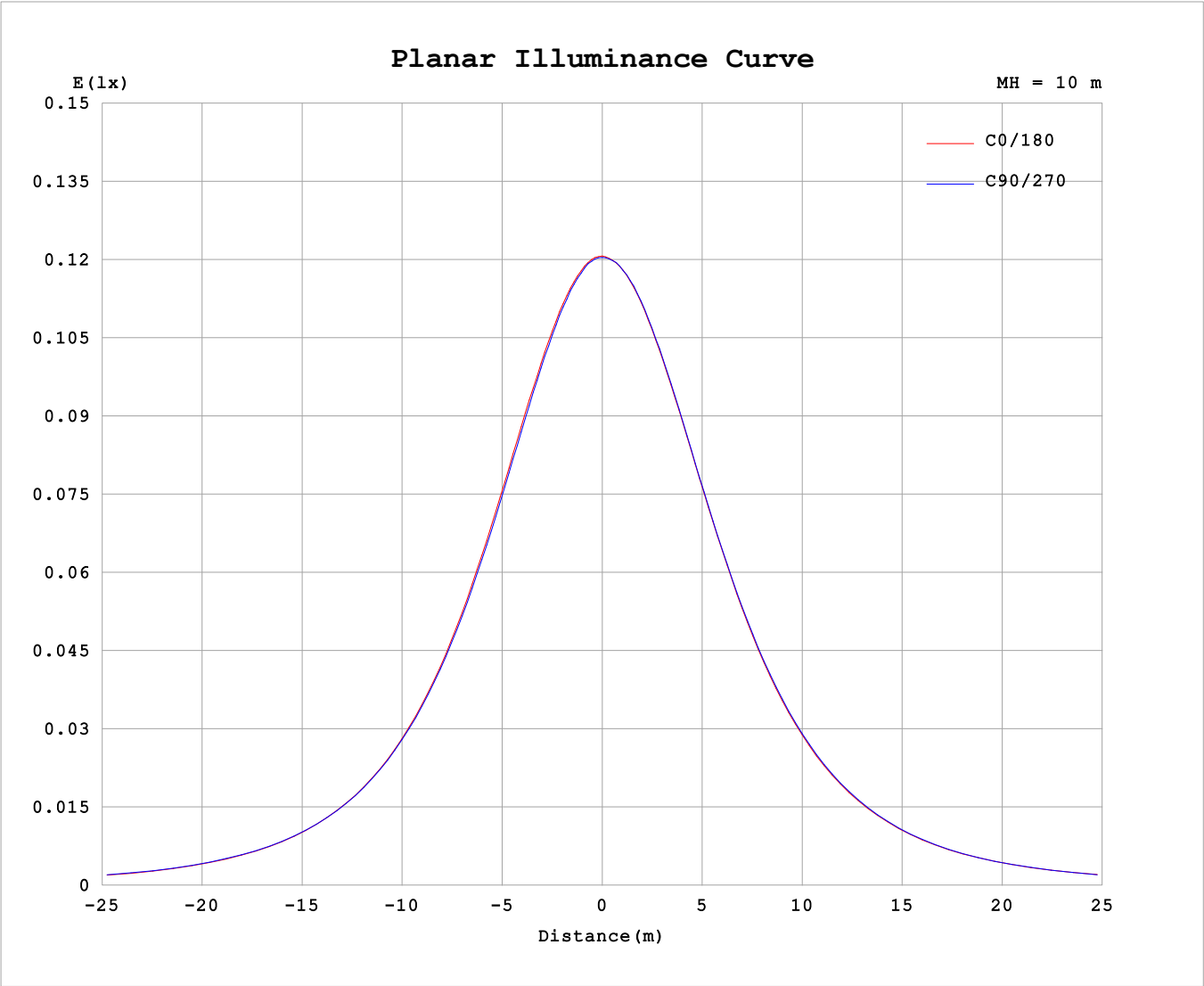
AvgL	cd/m2
L_0~180 (65) av	618
L_0~180 (75) av	569
L_0~180 (85) av	553
L_90~270 (65) av	626
L_90~270 (75) av	574
L_90~270 (85) av	484
L_45 (65) av	622
L_45 (75) av	571
L_45 (85) av	523

Standard: GB/T 29293-2012

C Range: 0 - 360DEG
C Interval: 22.5DEG
Test Speed: HIGH
Temperature:25.3℃
Operators:Cloud
Test Date:2024-10-19

γ Range: 0 - 180DEG
γ Interval: 1.0DEG
Test System:EVERFINE GO-2000B_V1 SYSTEM V2.00.488
Humidity:65.0%
Test Distance:6.360m [K=1.0000]
Remarks: BLUE

Planar Illuminance Curve



C Range: 0 - 360DEG	γ Range: 0 - 180DEG
C Interval: 22.5DEG	γ Interval: 1.0DEG
Test Speed: HIGH	Test System:EVERFINE GO-2000B_V1 SYSTEM V2.00.488
Temperature:25.3℃	Humidity:65.0%
Operators:Cloud	Test Distance:6.360m [K=1.0000]
Test Date:2024-10-19	Remarks: BLUE

LUMINOUS DISTRIBUTION INTENSITY DATA

Test:U:24.00V I:0.2893A P:6.943W PF:1.000 Freq:0Hz Lamp Flux:36.6255x1 lm																	
NAME: SF28-24V-5050-72-DMX4-RGBW(3000K)									TYPE:						WEIGHT:		
SPEC.:									DIM.: Length=1m						SERIAL No.:		
MFR.:									SUR.:						Shielding Angle:		

Table--1

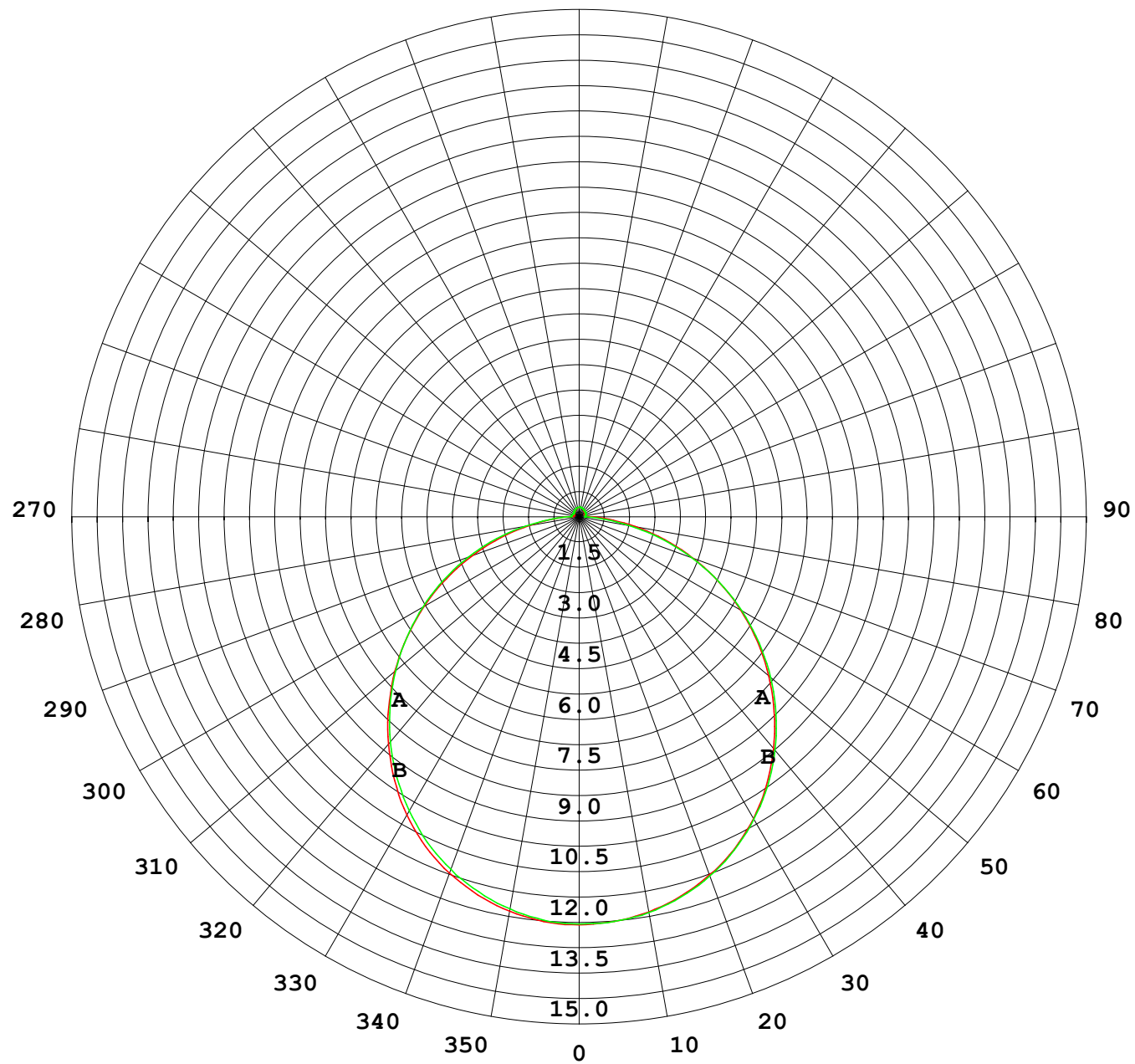
UNIT: cd

C (DEG) γ (DEG)	0	22.5	45	67.5	90	112.5	135	157.5	180	202.5	225	247.5	270	292.5	315	337.5			
0	12.0	12.0	12.0	12.0	12.0	12.0	12.0	12.0	12.0	12.0	12.0	12.0	12.0	12.0	12.0	12.0			
5	12.0	12.0	12.0	11.9	12.0	12.0	12.0	12.0	12.0	12.0	12.0	12.0	12.0	12.1	12.0	12.0			
10	11.8	11.8	11.8	11.8	11.8	11.8	11.8	11.8	11.8	11.9	11.9	11.9	11.9	11.9	11.9	11.9			
15	11.6	11.5	11.5	11.5	11.5	11.5	11.5	11.6	11.6	11.7	11.6	11.7	11.6	11.7	11.6	11.6			
20	11.2	11.2	11.2	11.1	11.1	11.1	11.2	11.2	11.2	11.3	11.3	11.3	11.3	11.3	11.3	11.3			
25	10.7	10.7	10.7	10.6	10.6	10.6	10.7	10.8	10.8	10.9	10.9	10.9	10.9	10.9	10.9	10.8			
30	10.2	10.1	10.1	10.1	10.0	10.1	10.2	10.2	10.3	10.4	10.4	10.4	10.3	10.4	10.3	10.3			
35	9.50	9.48	9.47	9.42	9.41	9.44	9.53	9.58	9.65	9.74	9.76	9.76	9.73	9.74	9.70	9.63			
40	8.75	8.74	8.75	8.71	8.69	8.73	8.81	8.86	8.93	9.02	9.06	9.06	9.01	9.03	8.98	8.88			
45	7.95	7.94	7.95	7.94	7.91	7.96	8.02	8.06	8.15	8.23	8.27	8.29	8.23	8.27	8.19	8.08			
50	7.11	7.08	7.10	7.11	7.09	7.14	7.18	7.22	7.31	7.38	7.42	7.45	7.39	7.41	7.32	7.23			
55	6.20	6.20	6.22	6.24	6.22	6.27	6.29	6.34	6.43	6.48	6.52	6.55	6.50	6.52	6.41	6.32			
60	5.28	5.28	5.30	5.34	5.34	5.36	5.38	5.42	5.50	5.54	5.57	5.60	5.56	5.55	5.47	5.38			
65	4.32	4.33	4.37	4.39	4.42	4.43	4.44	4.48	4.55	4.58	4.60	4.60	4.58	4.56	4.48	4.41			
70	3.35	3.38	3.42	3.45	3.48	3.47	3.49	3.52	3.58	3.60	3.59	3.58	3.55	3.54	3.48	3.43			
75	2.40	2.43	2.47	2.50	2.54	2.51	2.54	2.56	2.61	2.61	2.58	2.55	2.52	2.50	2.47	2.44			
80	1.49	1.52	1.56	1.57	1.62	1.60	1.61	1.64	1.68	1.66	1.61	1.56	1.51	1.51	1.51	1.52			
85	0.75	0.76	0.78	0.77	0.79	0.78	0.82	0.85	0.89	0.87	0.79	0.71	0.65	0.67	0.71	0.72			
90	0.31	0.29	0.32	0.27	0.26	0.28	0.36	0.38	0.39	0.39	0.31	0.25	0.17	0.22	0.24	0.29			
95	0.18	0.18	0.20	0.21	0.24	0.21	0.23	0.21	0.20	0.22	0.18	0.18	0.18	0.17	0.16	0.17			
100	0.17	0.18	0.20	0.21	0.24	0.21	0.21	0.19	0.17	0.18	0.18	0.18	0.19	0.17	0.17	0.16			
105	0.17	0.19	0.20	0.21	0.23	0.21	0.21	0.19	0.17	0.17	0.18	0.18	0.20	0.17	0.17	0.16			
110	0.17	0.20	0.20	0.21	0.20	0.21	0.20	0.20	0.17	0.17	0.19	0.18	0.21	0.18	0.18	0.16			
115	0.18	0.20	0.20	0.21	0.20	0.22	0.20	0.21	0.18	0.17	0.20	0.19	0.22	0.18	0.19	0.16			
120	0.18	0.21	0.20	0.22	0.20	0.22	0.20	0.22	0.19	0.17	0.20	0.19	0.22	0.18	0.20	0.17			
125	0.20	0.22	0.20	0.22	0.20	0.22	0.21	0.22	0.20	0.18	0.21	0.19	0.23	0.19	0.21	0.18			
130	0.21	0.23	0.21	0.23	0.21	0.24	0.21	0.24	0.21	0.18	0.21	0.20	0.23	0.20	0.22	0.19			
135	0.21	0.24	0.21	0.24	0.22	0.25	0.22	0.25	0.22	0.19	0.22	0.21	0.23	0.21	0.23	0.20			
140	0.22	0.24	0.22	0.25	0.23	0.25	0.24	0.25	0.23	0.20	0.23	0.21	0.24	0.22	0.24	0.21			
145	0.23	0.25	0.23	0.26	0.24	0.26	0.24	0.26	0.24	0.22	0.24	0.22	0.25	0.22	0.25	0.22			
150	0.24	0.25	0.24	0.27	0.25	0.27	0.25	0.27	0.24	0.23	0.25	0.23	0.25	0.23	0.25	0.23			
155	0.25	0.27	0.25	0.28	0.26	0.28	0.26	0.28	0.26	0.24	0.27	0.24	0.27	0.24	0.27	0.25			
160	0.27	0.27	0.26	0.28	0.27	0.29	0.27	0.29	0.27	0.25	0.28	0.25	0.27	0.25	0.27	0.25			
165	0.27	0.28	0.27	0.29	0.27	0.29	0.28	0.29	0.28	0.26	0.28	0.26	0.28	0.26	0.29	0.27			
170	0.27	0.28	0.27	0.29	0.27	0.29	0.28	0.29	0.28	0.27	0.28	0.27	0.29	0.27	0.29	0.28			
175	0.27	0.28	0.28	0.29	0.28	0.29	0.28	0.29	0.28	0.27	0.28	0.28	0.29	0.28	0.29	0.29			
180	0.28	0.28	0.28	0.29	0.29	0.29	0.29	0.29	0.28	0.28	0.28	0.29	0.29	0.29	0.29	0.29			

C Range: 0 - 360DEG
C Interval: 22.5DEG
Test Speed: HIGH
Temperature:25.3℃
Operators:Cloud
Test Date:2024-10-19

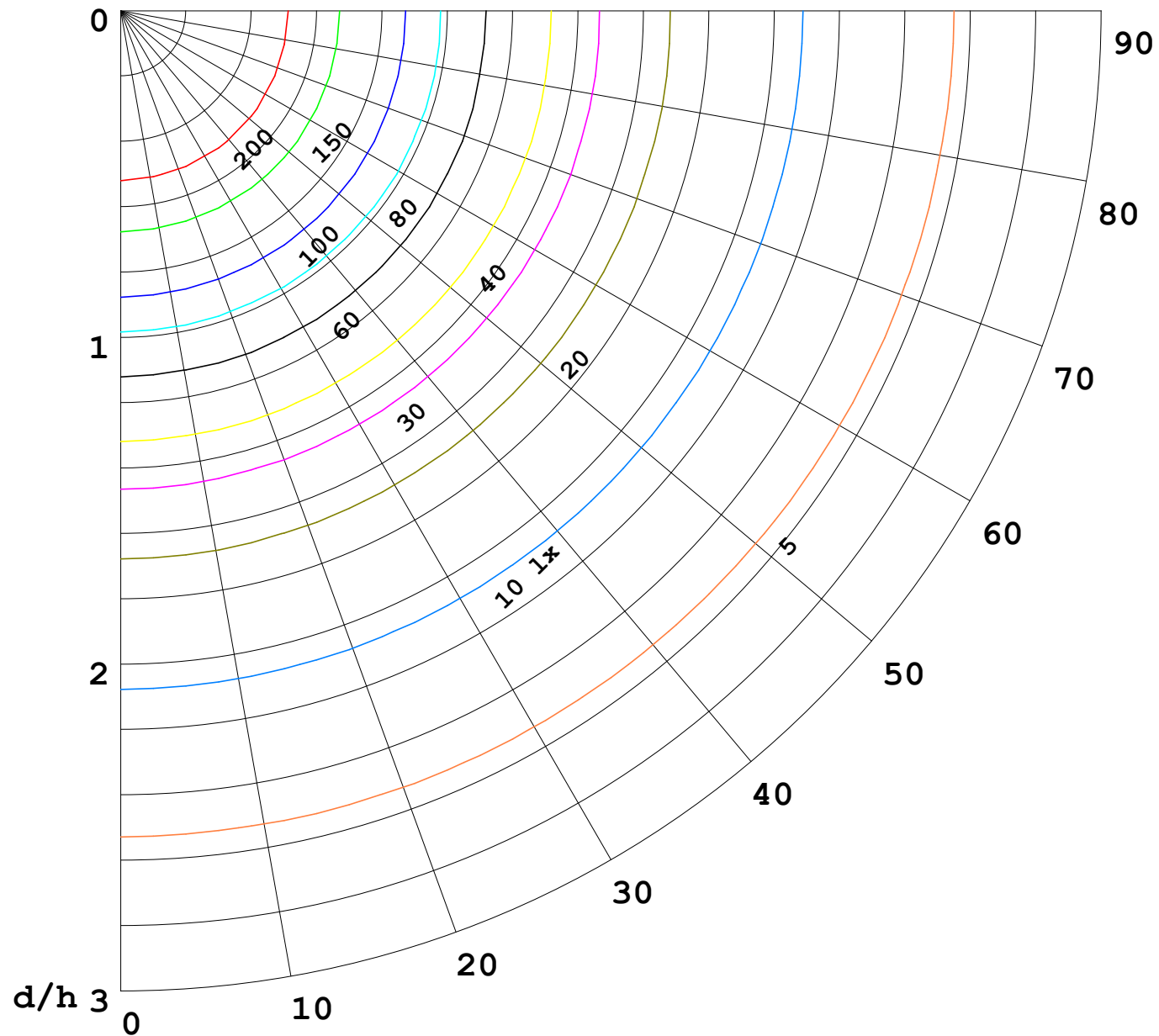
γ Range: 0 - 180DEG
γ Interval: 1.0DEG
Test System:EVERFINE GO-2000B_V1 SYSTEM V2.00.488
Humidity:65.0%
Test Distance:6.360m [K=1.0000]
Remarks: BLUE

I (cd)



1000 lm

$\kappa = 1$



F = 1000 lm
 K = 0.7
 Hcc = 0.8 m
 Hfc = 0.0 m
 Eave = 100 lx

	Pcc	Pw	Pfc
—————	70	50	30
—————	50	30	20

