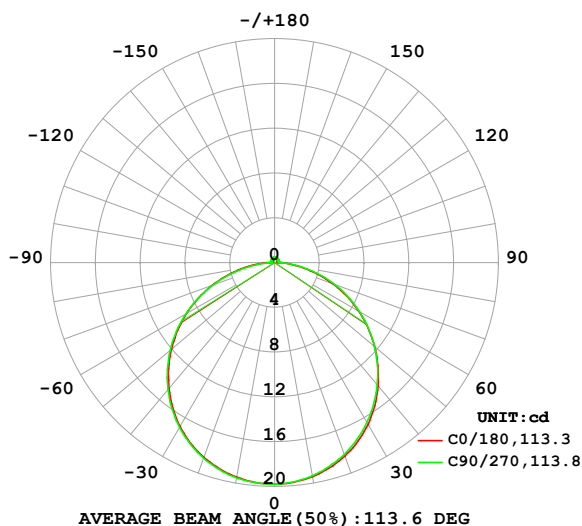


LUMINAIRE PHOTOMETRIC TEST REPORT

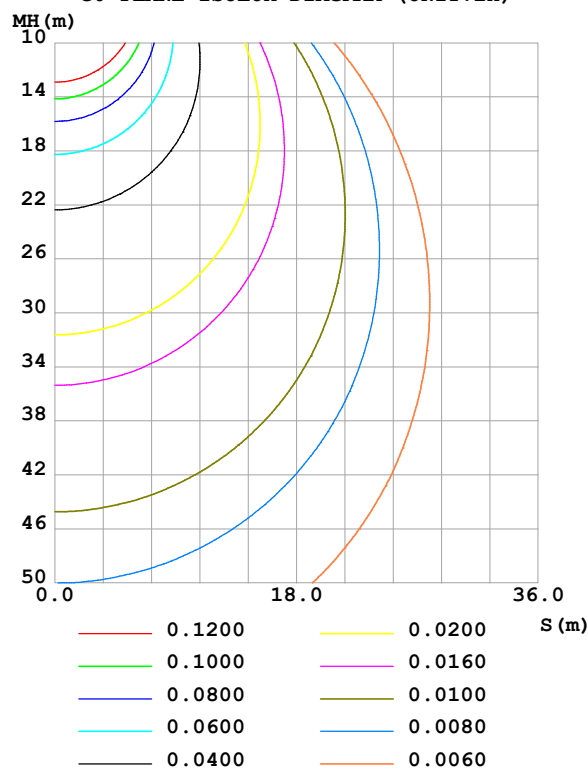
Test:U:24.00V I:0.2720A P:6.528W PF:1.000 Freq:0Hz Lamp Flux:60.2922x1 lm		
NAME: SF28-24V-5050-72-DMX4-RGBW(3000K)	TYPE:	WEIGHT:
SPEC.:	DIM.: Length=1m	SERIAL No.:
MFR.:	SUR.:	Shielding Angle:

DATA OF LAMP		PHOTOMETRIC DATA				Eff: 9.24 lm/W
MODEL		I _{max} (cd)	19.79	S/MH(C0/180)	1.27	
NOMINAL POWER(W)		LOR(%)	100.0	S/MH(C90/270)	1.28	
RATED VOLTAGE(V)		TOTAL FLUX(lm)	60.292	η UP,DN(C0-180)	2.0,47.5	
NOMINAL FLUX(lm)	60.2922	CIE CLASS	DIRECT	η UP,DN(C180-360)	1.9,48.6	
LAMPS INSIDE	1	η up (%)	3.9	CIBSE SHR NOM	1.25	
TEST VOLTAGE(V)		η down (%)	96.1	CIBSE SHR MAX	1.35	

LUMINOUS INTENSITY DISTRIBUTION DIAGRAM



C0 PLANE ISOLUX DIAGRAM (UNIT:lx)



C Range: 0 - 360DEG
C Interval: 22.5DEG
Test Speed: HIGH
Temperature:25.3℃
Operators:Cloud
Test Date:2024-10-19

γ Range: 0 - 180DEG
γ Interval: 1.0DEG
Test System:EVERFINE GO-2000B_V1 SYSTEM V2.00.488
Humidity:65.0%
Test Distance:6.360m [K=1.0000]
Remarks: RED

ZONAL FLUX DIAGRAM

ZONAL FLUX DIAGRAM:

γ	C0	C45	C90	C135	C180	C225	C270	C315	γ	Φ zone	Φ total	%lum, lamp
10	19.43	19.36	19.34	19.38	19.47	19.51	19.53	19.48	0- 10	1.872	1.872	3.11,3.11
20	18.39	18.29	18.22	18.33	18.50	18.58	18.58	18.54	10- 20	5.367	7.239	12,12
30	16.70	16.60	16.48	16.66	16.91	17.04	17.00	16.95	20- 30	8.152	15.39	25.5,25.5
40	14.38	14.35	14.26	14.45	14.68	14.88	14.83	14.77	30- 40	9.853	25.24	41.9,41.9
50	11.66	11.66	11.64	11.79	12.02	12.21	12.18	12.05	40- 50	10.25	35.49	58.9,58.9
60	8.661	8.704	8.755	8.841	9.074	9.189	9.171	9.014	50- 60	9.345	44.84	74.4,74.4
70	5.497	5.594	5.703	5.728	5.915	5.927	5.858	5.735	60- 70	7.278	52.12	86.4,86.4
80	2.429	2.537	2.599	2.638	2.791	2.668	2.496	2.489	70- 80	4.369	56.49	93.7,93.7
90	0.5033	0.5192	0.4093	0.5988	0.6811	0.5375	0.2951	0.4142	80- 90	1.484	57.97	96.1,96.1
100	0.2883	0.3368	0.3790	0.3569	0.2882	0.3052	0.3183	0.2902	90-100	0.3896	58.36	96.8,96.8
110	0.2967	0.3368	0.3298	0.3511	0.2883	0.3196	0.3617	0.3134	100-110	0.3394	58.70	97.4,97.4
120	0.3310	0.3484	0.3442	0.3569	0.3196	0.3484	0.3790	0.3424	110-120	0.3315	59.03	97.9,97.9
130	0.3596	0.3627	0.3646	0.3801	0.3454	0.3656	0.3906	0.3715	120-130	0.3201	59.35	98.4,98.4
140	0.3881	0.3858	0.3963	0.4091	0.3853	0.4002	0.4051	0.4033	130-140	0.2963	59.65	98.9,98.9
150	0.4194	0.4174	0.4339	0.4381	0.4195	0.4319	0.4311	0.4323	140-150	0.2584	59.91	99.4,99.4
160	0.4537	0.4578	0.4658	0.4642	0.4566	0.4636	0.4630	0.4671	150-160	0.2054	60.11	99.7,99.7
170	0.4709	0.4750	0.4832	0.4845	0.4851	0.4923	0.5005	0.4933	160-170	0.1343	60.25	99.9,99.9
180	0.4851	0.4894	0.5006	0.4961	0.4823	0.4923	0.5034	0.4990	170-180	0.0467	60.29	100,100
DEG	LUMINOUS INTENSITY:cd									UNIT:lm		

Conical surface Flux(90deg): 30.403 lm

%lum = 50.4%

%lamp = 50.4%

Conical surface Flux(130deg): 48.8 lm

%lum = 80.9%

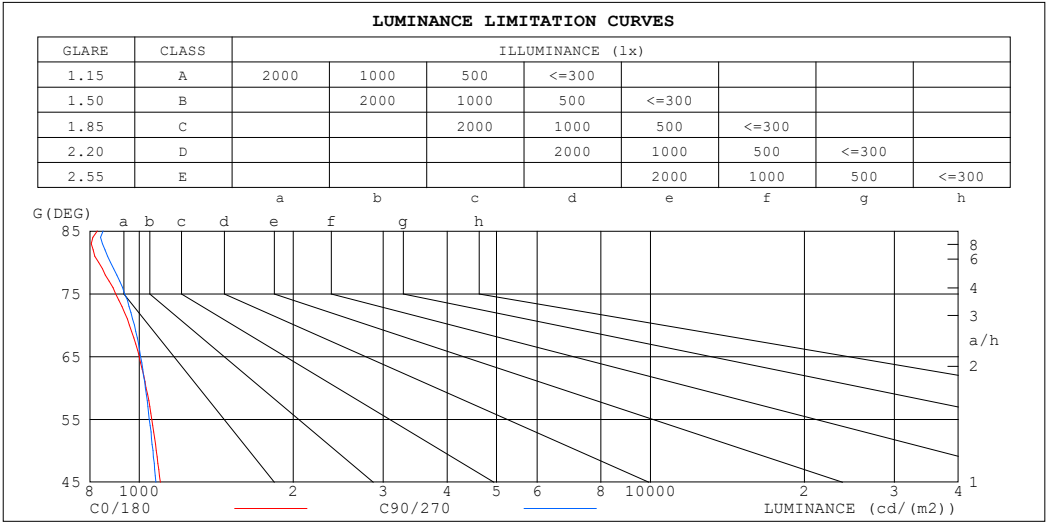
%lamp = 80.9%

C Range: 0 - 360DEG
 C Interval: 22.5DEG
 Test Speed: HIGH
 Temperature:25.3℃
 Operators:Cloud
 Test Date:2024-10-19

γ Range: 0 - 180DEG
 γ Interval: 1.0DEG
 Test System:EVERFINE GO-2000B_V1 SYSTEM V2.00.488
 Humidity:65.0%
 Test Distance:6.360m [K=1.0000]
 Remarks: RED

LUMINANCE LIMITATION CURVES

Test:U:24.00V I:0.2720A P:6.528W PF:1.000 Freq:0Hz Lamp Flux:60.2922x1 lm		
NAME: SF28-24V-5050-72-DMX4-RGBW(3000K)	TYPE:	WEIGHT:
SPEC.:	DIM.: Length=1m	SERIAL No.:
MFR.:	SUR.:	Shielding Angle:



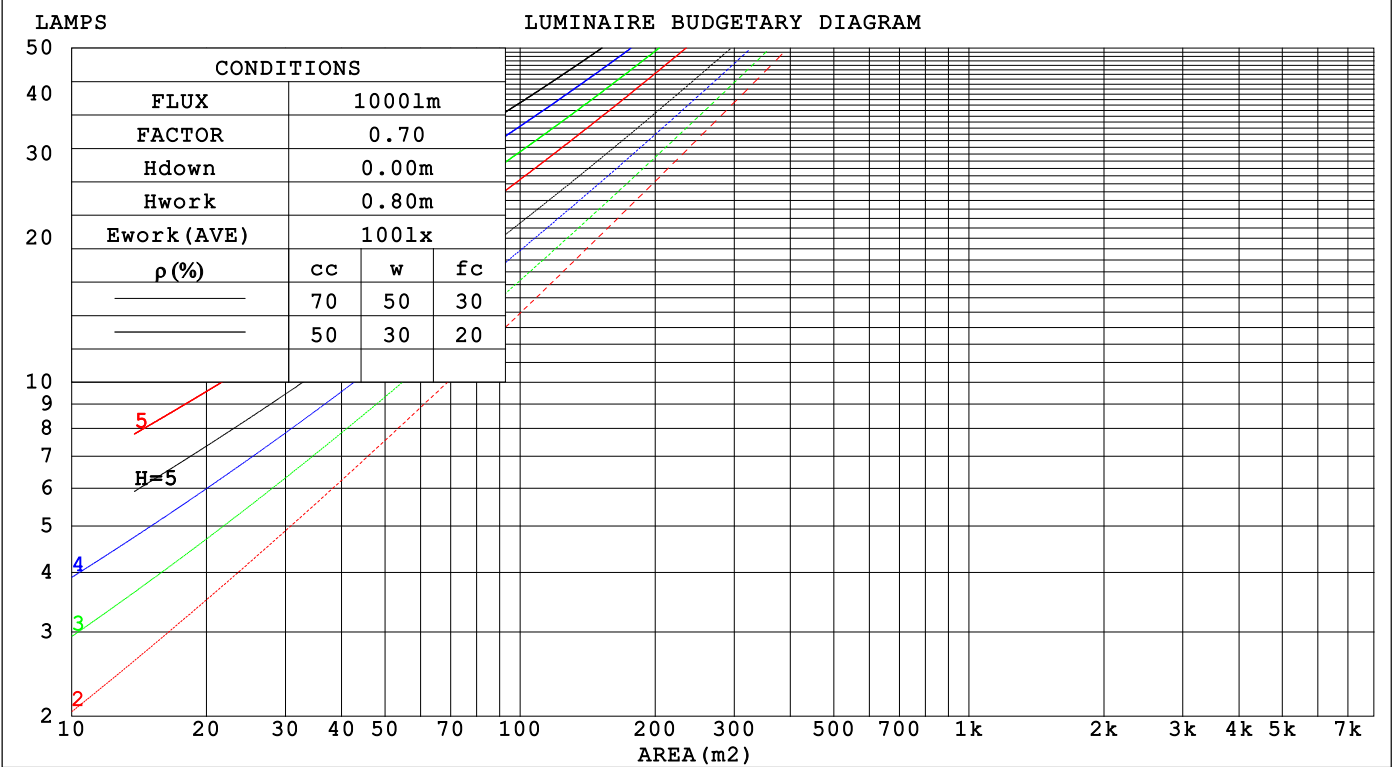
LUMINANCE cd/(m2)		
G (DEG)	C0/180	C90/270
85	828	849
80	832	878
75	898	936
70	956	978
65	999	1006
60	1031	1027
55	1057	1046
50	1079	1063
45	1099	1077

C Range: 0 - 360DEG	γ Range: 0 - 180DEG
C Interval: 22.5DEG	γ Interval: 1.0DEG
Test Speed: HIGH	Test System:EVERFINE GO-2000B_V1 SYSTEM V2.00.488
Temperature:25.3℃	Humidity:65.0%
Operators:Cloud	Test Distance:6.360m [K=1.0000]
Test Date:2024-10-19	Remarks: RED

CU AND LUMINAIRE BUDGETARY ESTIMATE DIAGRAM

Test:U:24.00V I:0.2720A P:6.528W PF:1.000 Freq:0Hz		
Lamp Flux:60.2922x1 lm		
NAME: SF28-24V-5050-72-DMX4-RGBW(3000K)	TYPE:	WEIGHT:
SPEC.:	DIM.: Length=1m	SERIAL No.:
MFR.:	SUR.:	Shielding Angle:

pcc	80%			70%			50%			30%			10%			0
ρw	50%	30%	10%	50%	30%	10%	50%	30%	10%	50%	30%	10%	50%	30%	10%	0
ρfc	20%			20%			20%			20%			20%			0
RCR	RCR:Room Cavity Ratio			Coefficients of Utilization(CU)												
0.0	1.18	1.18	1.18	1.15	1.15	1.15	1.09	1.09	1.09	1.04	1.04	1.04	.99	.99	.99	.96
1.0	1.03	.98	.94	.90	.96	.92	.95	.92	.89	.90	.88	.85	.86	.84	.82	.80
2.0	.89	.82	.76	.87	.80	.75	.83	.77	.73	.79	.74	.70	.75	.72	.68	.66
3.0	.78	.70	.63	.76	.68	.62	.73	.66	.61	.69	.64	.59	.66	.62	.58	.55
4.0	.69	.60	.53	.67	.59	.53	.64	.57	.52	.62	.55	.50	.59	.54	.49	.47
5.0	.62	.52	.46	.60	.52	.45	.58	.50	.44	.55	.49	.44	.53	.47	.43	.41
6.0	.55	.46	.40	.54	.46	.40	.52	.44	.39	.50	.43	.38	.48	.42	.38	.35
7.0	.50	.41	.35	.49	.41	.35	.47	.40	.34	.45	.39	.34	.44	.38	.33	.31
8.0	.46	.37	.31	.45	.37	.31	.43	.36	.31	.42	.35	.30	.40	.34	.30	.28
9.0	.42	.34	.28	.41	.33	.28	.40	.33	.28	.38	.32	.27	.37	.31	.27	.25
10.0	.39	.31	.25	.38	.30	.25	.37	.30	.25	.36	.29	.25	.34	.29	.24	.23



C Range: 0 - 360DEG

C Interval: 22.5DEG

Test Speed: HIGH

Temperature:25.3℃

Operators:Cloud

Test Date:2024-10-19

γ Range: 0 - 180DEG

γ Interval: 1.0DEG

Test System:EVERFINE GO-2000B_V1 SYSTEM V2.00.488

Humidity:65.0%

Test Distance:6.360m [K=1.0000]

Remarks: RED

WEC AND CCEC

Test:U:24.00V I:0.2720A P:6.528W PF:1.000 Freq:0Hz Lamp Flux:60.2922x1 lm		
NAME: SF28-24V-5050-72-DMX4-RGBW(3000K)	TYPE:	WEIGHT:
SPEC.:	DIM.: Length=1m	SERIAL No.:
MFR.:	SUR.:	Shielding Angle:

pcc	80%			70%			50%			30%			10%			0														
pw	50%	30%	10%	50%	30%	10%	50%	30%	10%	50%	30%	10%	50%	30%	10%	0														
pfc	20%			20%			20%			20%			20%			0														
RCR	RCR:Room Cavity Ratio															Wall Exitance Coefficients(WEC)														
0.0																														
1.0	.318	.181	.057	.310	.177	.056	.294	.169	.054	.280	.161	.052	.267	.155	.050															
2.0	.296	.162	.050	.289	.159	.049	.275	.153	.047	.262	.147	.046	.250	.142	.045															
3.0	.272	.145	.043	.266	.142	.043	.254	.137	.042	.242	.133	.041	.232	.128	.040															
4.0	.251	.130	.038	.245	.128	.038	.234	.124	.037	.224	.120	.036	.214	.116	.035															
5.0	.231	.118	.034	.226	.116	.034	.216	.113	.033	.207	.109	.033	.199	.106	.032															
6.0	.214	.107	.031	.210	.106	.030	.201	.103	.030	.192	.100	.029	.185	.097	.029															
7.0	.199	.098	.028	.195	.097	.028	.187	.095	.027	.180	.092	.027	.173	.090	.026															
8.0	.186	.091	.026	.182	.090	.025	.175	.087	.025	.168	.085	.025	.162	.083	.024															
9.0	.174	.084	.024	.171	.083	.023	.164	.081	.023	.158	.079	.023	.152	.077	.022															
10.0	.163	.078	.022	.160	.077	.022	.154	.076	.021	.149	.074	.021	.144	.072	.021															

pcc	80%			70%			50%			30%			10%			0
pw	50%	30%	10%	50%	30%	10%	50%	30%	10%	50%	30%	10%	50%	30%	10%	0
pfc	20%			20%			20%			20%			20%			0
RCR	RCR:Room Cavity Ratio						Ceiling Cavity Exitance Coefficients (CCEC)									
0.0	.220	.220	.220	.188	.188	.188	.128	.128	.128	.074	.074	.074	.024	.024	.024	
1.0	.210	.186	.163	.180	.159	.141	.123	.110	.097	.071	.063	.057	.023	.020	.018	
2.0	.203	.162	.127	.174	.139	.110	.119	.096	.077	.069	.056	.045	.022	.018	.015	
3.0	.195	.144	.104	.167	.124	.090	.115	.086	.063	.066	.050	.037	.021	.016	.012	
4.0	.187	.131	.088	.161	.113	.077	.111	.079	.054	.064	.046	.032	.021	.015	.010	
5.0	.180	.121	.077	.154	.105	.067	.106	.073	.047	.062	.043	.028	.020	.014	.009	
6.0	.173	.113	.069	.148	.097	.060	.102	.068	.043	.059	.040	.025	.019	.013	.008	
7.0	.166	.106	.064	.143	.092	.055	.099	.064	.039	.057	.038	.023	.019	.012	.008	
8.0	.159	.100	.059	.137	.087	.052	.095	.061	.037	.055	.036	.022	.018	.012	.007	
9.0	.153	.095	.056	.132	.082	.049	.092	.058	.034	.053	.034	.021	.017	.011	.007	
10.0	.148	.091	.053	.127	.079	.046	.088	.055	.033	.051	.033	.020	.017	.011	.006	

C Range: 0 - 360DEG
C Interval: 22.5DEG
Test Speed: HIGH
Temperature:25.3℃
Operators:Cloud
Test Date:2024-10-19

γ Range: 0 - 180DEG
γ Interval: 1.0DEG
Test System:EVERFINE GO-2000B_V1 SYSTEM V2.00.488
Humidity:65.0%
Test Distance:6.360m [K=1.0000]
Remarks: RED

UGR(Unified Glare Rating) Table

Test:U:24.00V I:0.2720A P:6.528W PF:1.000 Freq:0Hz Lamp Flux:60.2922x1 lm										
NAME: SF28-24V-5050-72-DMX4-RGBW(3000K)					TYPE:			WEIGHT:		
SPEC.:					DIM.: Length=1m			SERIAL No.:		
MFR.:					SUR.:			Shielding Angle:		
ceiling/cavity	0.7	0.7	0.5	0.5	0.3	0.7	0.7	0.5	0.5	0.3
walls	0.5	0.3	0.5	0.3	0.3	0.5	0.3	0.5	0.3	0.3
working plane	0.2	0.2	0.2	0.2	0.2	0.2	0.2	0.2	0.2	0.2
Room dimensions	Viewed crosswise					Viewed endwise				
x = 2H y = 2H	22.5	24.0	22.9	24.3	24.6	22.5	24.0	22.9	24.3	24.6
3H	24.1	25.5	24.5	25.8	26.1	24.1	25.5	24.5	25.8	26.1
4H	24.7	26.0	25.1	26.4	26.7	24.8	26.1	25.2	26.4	26.8
6H	25.2	26.4	25.6	26.8	27.1	25.3	26.5	25.7	26.9	27.2
8H	25.4	26.6	25.8	26.9	27.3	25.5	26.7	25.9	27.0	27.4
12H	25.5	26.6	25.9	27.0	27.4	25.6	26.8	26.0	27.1	27.5
4H 2H	23.2	24.5	23.5	24.8	25.1	23.1	24.4	23.5	24.8	25.1
3H	24.9	26.0	25.3	26.4	26.8	24.9	26.1	25.3	26.4	26.8
4H	25.7	26.7	26.1	27.1	27.5	25.7	26.8	26.2	27.2	27.6
6H	26.3	27.2	26.7	27.6	28.1	26.4	27.3	26.8	27.7	28.2
8H	26.5	27.4	27.0	27.8	28.3	26.6	27.5	27.1	27.9	28.4
12H	26.7	27.5	27.2	27.9	28.4	26.8	27.6	27.3	28.0	28.5
8H 4H	26.0	26.8	26.4	27.3	27.7	26.0	26.9	26.5	27.3	27.8
6H	26.7	27.4	27.2	27.9	28.4	26.8	27.5	27.3	28.0	28.5
8H	27.0	27.7	27.6	28.2	28.7	27.2	27.8	27.7	28.3	28.8
12H	27.3	27.9	27.9	28.4	28.9	27.4	28.0	28.0	28.5	29.1
12H 4H	26.0	26.8	26.5	27.2	27.7	26.0	26.8	26.5	27.3	27.8
6H	26.8	27.4	27.3	27.9	28.5	26.9	27.5	27.4	28.0	28.6
8H	27.2	27.7	27.7	28.2	28.8	27.3	27.8	27.8	28.3	28.9
Variations with the observer position at spacings(CIE Pub.117):										
S = 1.0H	+ 0.1 / - 0.2					+ 0.1 / - 0.2				
1.5H	+ 0.2 / - 0.3					+ 0.2 / - 0.3				
2.0H	+ 0.1 / - 0.3					+ 0.1 / - 0.3				

CIE Pub.117, 60.29 lm Total Lamp Luminous Flux Correct (8log(F/F0) = -9.8)
Area: 0.017 m2

C Range: 0 - 360DEG
C Interval: 22.5DEG
Test Speed: HIGH
Temperature:25.3℃
Operators:Cloud
Test Date:2024-10-19

γ Range: 0 - 180DEG
γ Interval: 1.0DEG
Test System:EVERFINE GO-2000B_V1 SYSTEM V2.00.488
Humidity:65.0%
Test Distance:6.360m [K=1.0000]
Remarks: RED

UTILIZATION FACTORS TABLE

Test:U:24.00V I:0.2720A P:6.528W PF:1.000 Freq:0Hz Lamp Flux:60.2922x1 lm		
NAME: SF28-24V-5050-72-DMX4-RGBW(3000K)	TYPE:	WEIGHT:
SPEC.:	DIM.: Length=1m	SERIAL No.:
MFR.:	SUR.:	Shielding Angle:

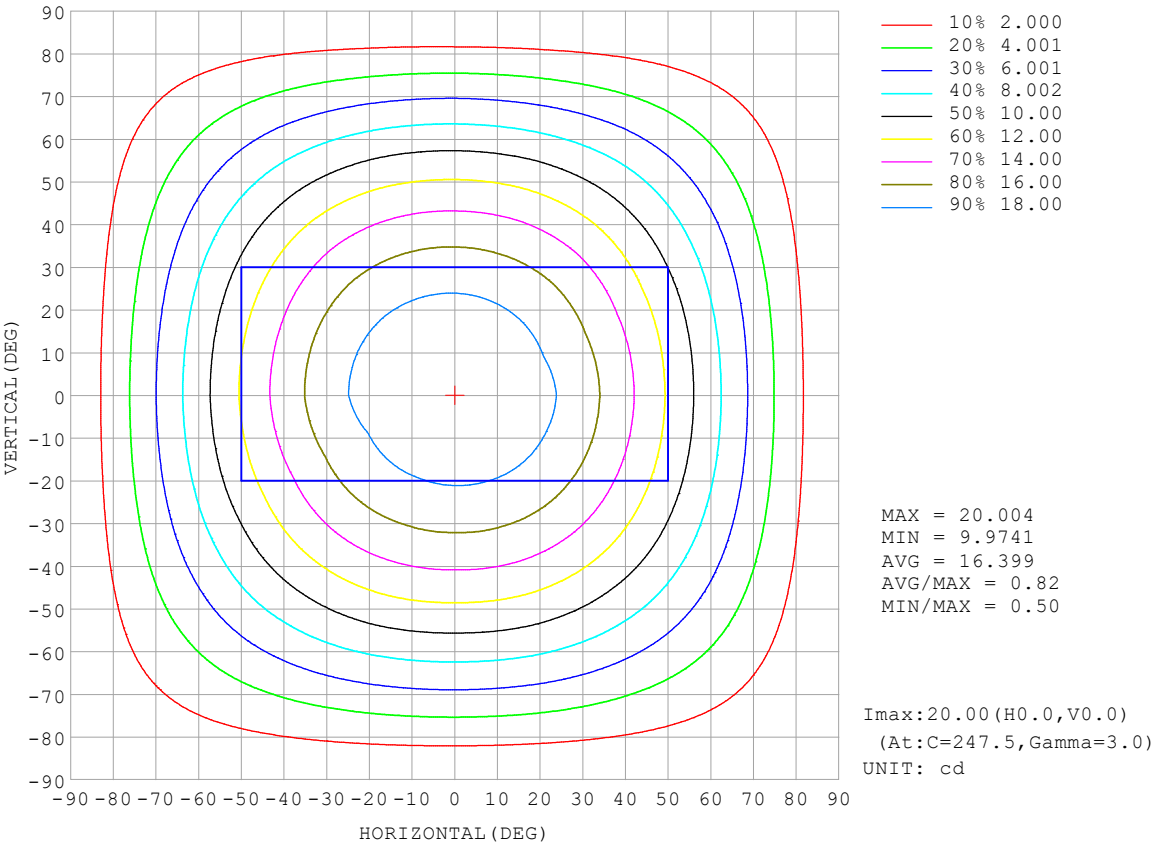
REFLECTANCE										
Ceiling	0.8	0.8	0.8	0.7	0.7	0.7	0.5	0.5	0.5	0
Walls	0.7	0.5	0.3	0.7	0.5	0.3	0.7	0.5	0.3	0
Working plane	0.2	0.2	0.2	0.2	0.2	0.2	0.2	0.2	0.2	0
ROOM INDEX	UTILIZATION FACTORS (PERCENT) $k(RI) \times RCR = 5$									
$k = 0.60$	56	44	37	55	44	37	54	43	37	30
0.80	66	54	47	65	53	46	63	52	46	39
1.00	74	63	55	73	62	55	70	63	54	47
1.25	81	70	63	79	70	63	76	68	61	54
1.50	86	76	69	84	75	68	81	73	67	59
2.00	93	84	78	91	83	77	87	80	75	66
2.50	97	89	83	95	87	82	90	84	79	70
3.00	101	93	88	98	92	86	93	88	84	74
4.00	105	99	94	102	97	92	97	93	89	79
5.00	107	102	98	104	100	96	99	96	92	82
ROOM INDEX	UF (total)									Direct
According to DIN EN 13032-2 2004			Suspended					SHRNOM = 1.25		

C Range: 0 - 360DEG
 C Interval: 22.5DEG
 Test Speed: HIGH
 Temperature: 25.3°C
 Operators: Cloud
 Test Date: 2024-10-19

γ Range: 0 - 180DEG
 γ Interval: 1.0DEG
 Test System: EVERFINE GO-2000B_V1 SYSTEM V2.00.488
 Humidity: 65.0%
 Test Distance: 6.360m [K=1.0000]
 Remarks: RED

ISOCANDELA DIAGRAM

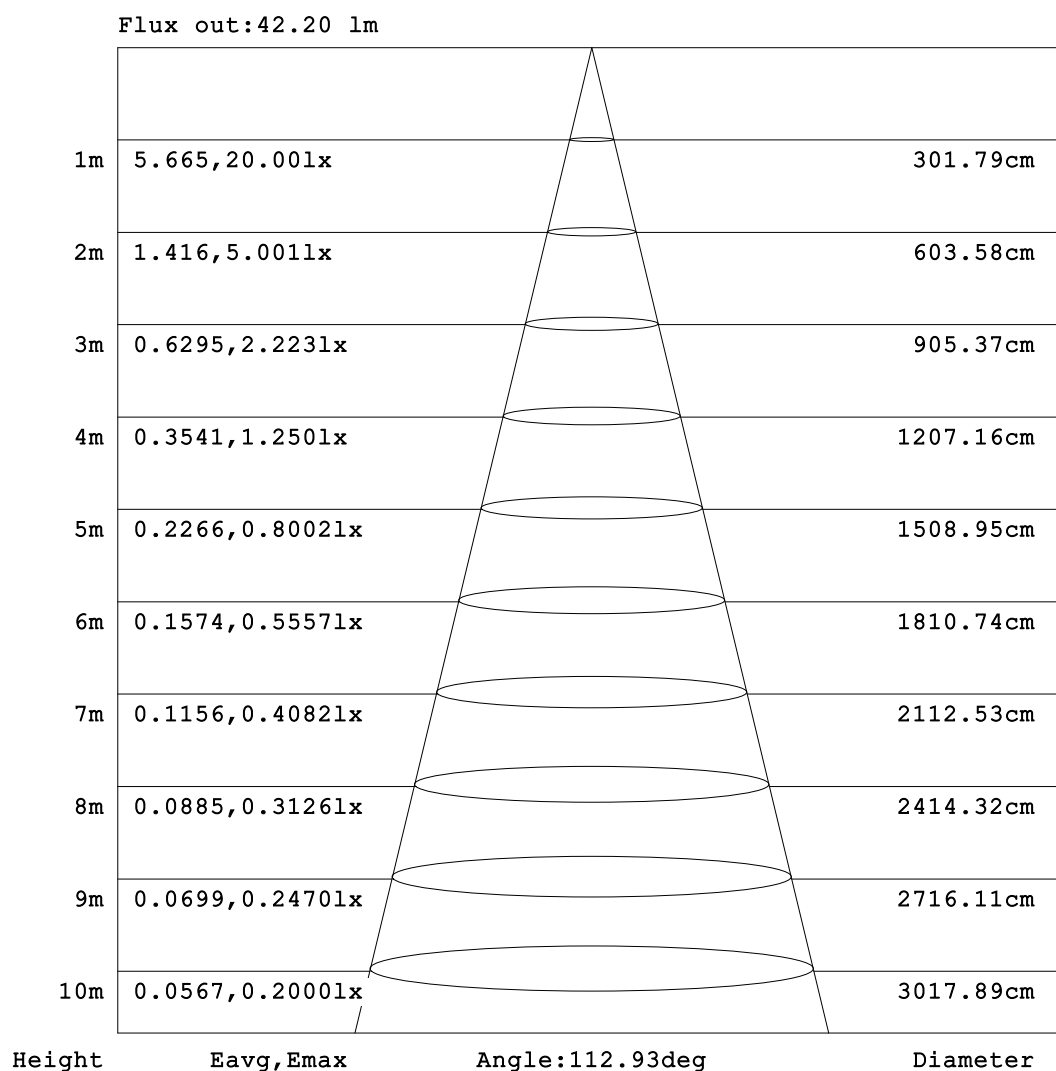
Test:U:24.00V I:0.2720A P:6.528W PF:1.000 Freq:0Hz Lamp Flux:60.2922x1 lm		
NAME: SF28-24V-5050-72-DMX4-RGBW(3000K)	TYPE:	WEIGHT:
SPEC.:	DIM.: Length=1m	SERIAL No.:
MFR.:	SUR.:	Shielding Angle:



C Range: 0 - 360DEG	γ Range: 0 - 180DEG
C Interval: 22.5DEG	γ Interval: 1.0DEG
Test Speed: HIGH	Test System:EVERFINE GO-2000B_V1 SYSTEM V2.00.488
Temperature:25.3℃	Humidity:65.0%
Operators:Cloud	Test Distance:6.360m [K=1.0000]
Test Date:2024-10-19	Remarks: RED

AAI Figure

Test:U:24.00V I:0.2720A P:6.528W PF:1.000 Freq:0Hz Lamp Flux:60.2922x1 lm		
NAME: SF28-24V-5050-72-DMX4-RGBW(3000K)	TYPE:	WEIGHT:
SPEC.:	DIM.: Length=1m	SERIAL No.:
MFR.:	SUR.:	Shielding Angle:



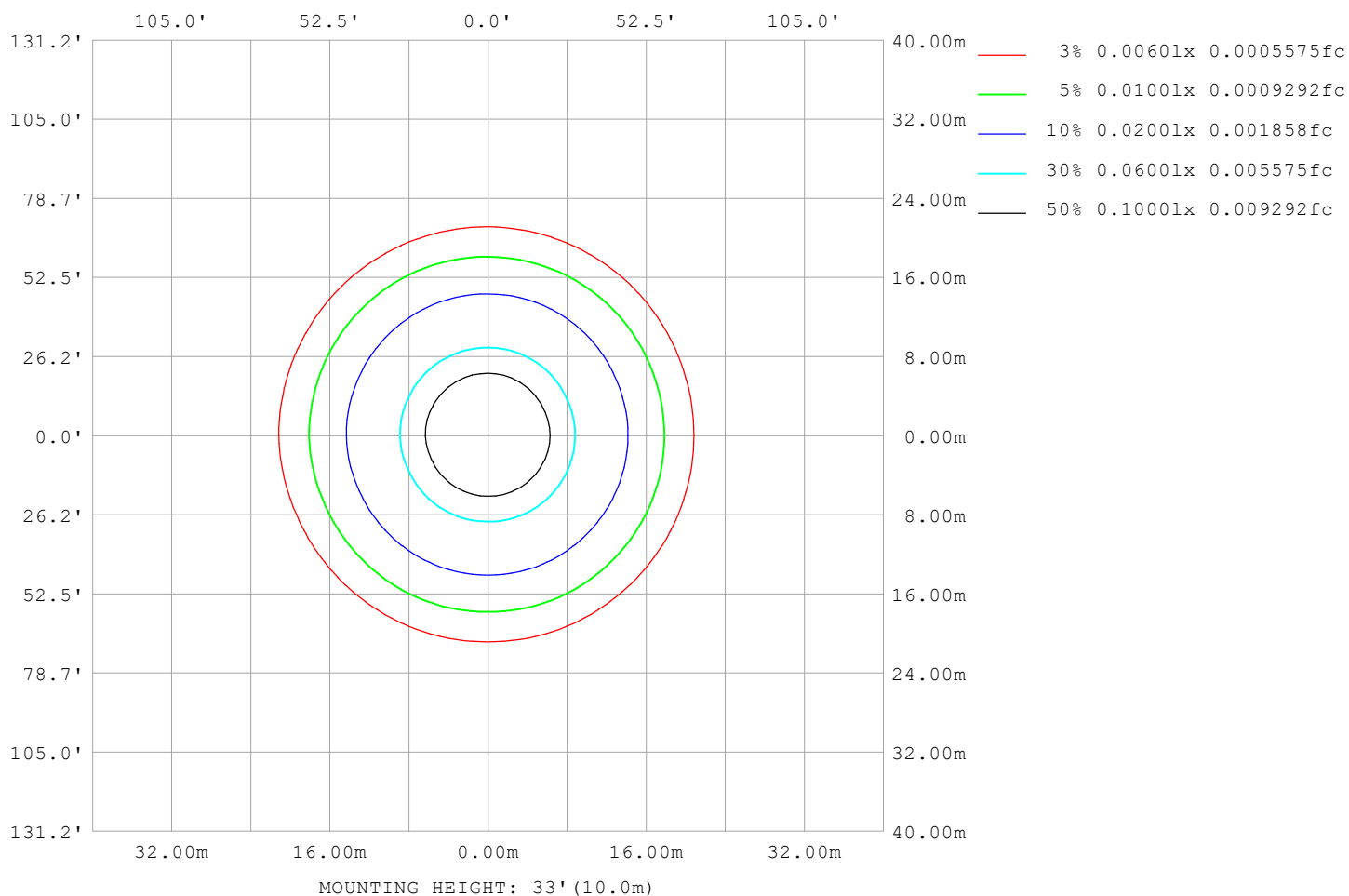
Note:The Curves indicate the illuminated area and the average illumination when the luminaire is at different distance.

C Range: 0 - 360DEG
C Interval: 22.5DEG
Test Speed: HIGH
Temperature:25.3℃
Operators:Cloud
Test Date:2024-10-19

γ Range: 0 - 180DEG
γ Interval: 1.0DEG
Test System:EVERFINE GO-2000B_V1 SYSTEM V2.00.488
Humidity:65.0%
Test Distance:6.360m [K=1.0000]
Remarks: RED

ISOLUX DIAGRAM

Test:U:24.00V I:0.2720A P:6.528W PF:1.000 Freq:0Hz Lamp Flux:60.2922x1 lm		
NAME: SF28-24V-5050-72-DMX4-RGBW(3000K)	TYPE:	WEIGHT:
SPEC.:	DIM.: Length=1m	SERIAL No.:
MFR.:	SUR.:	Shielding Angle:



C Range: 0 - 360DEG
C Interval: 22.5DEG
Test Speed: HIGH
Temperature: 25.3°C
Operators: Cloud
Test Date: 2024-10-19

γ Range: 0 - 180DEG
γ Interval: 1.0DEG
Test System: EVERFINE GO-2000B_V1 SYSTEM V2.00.488
Humidity: 65.0%
Test Distance: 6.360m [K=1.0000]
Remarks: RED

LED Avg.L Report

Test:U:24.00V I:0.2720A P:6.528W PF:1.000 Freq:0Hz Lamp Flux:60.2922x1 lm		
NAME: SF28-24V-5050-72-DMX4-RGBW(3000K)	TYPE:	WEIGHT:
SPEC.:	DIM.: Length=1m	SERIAL No.:
MFR.:	SUR.:	Shielding Angle:

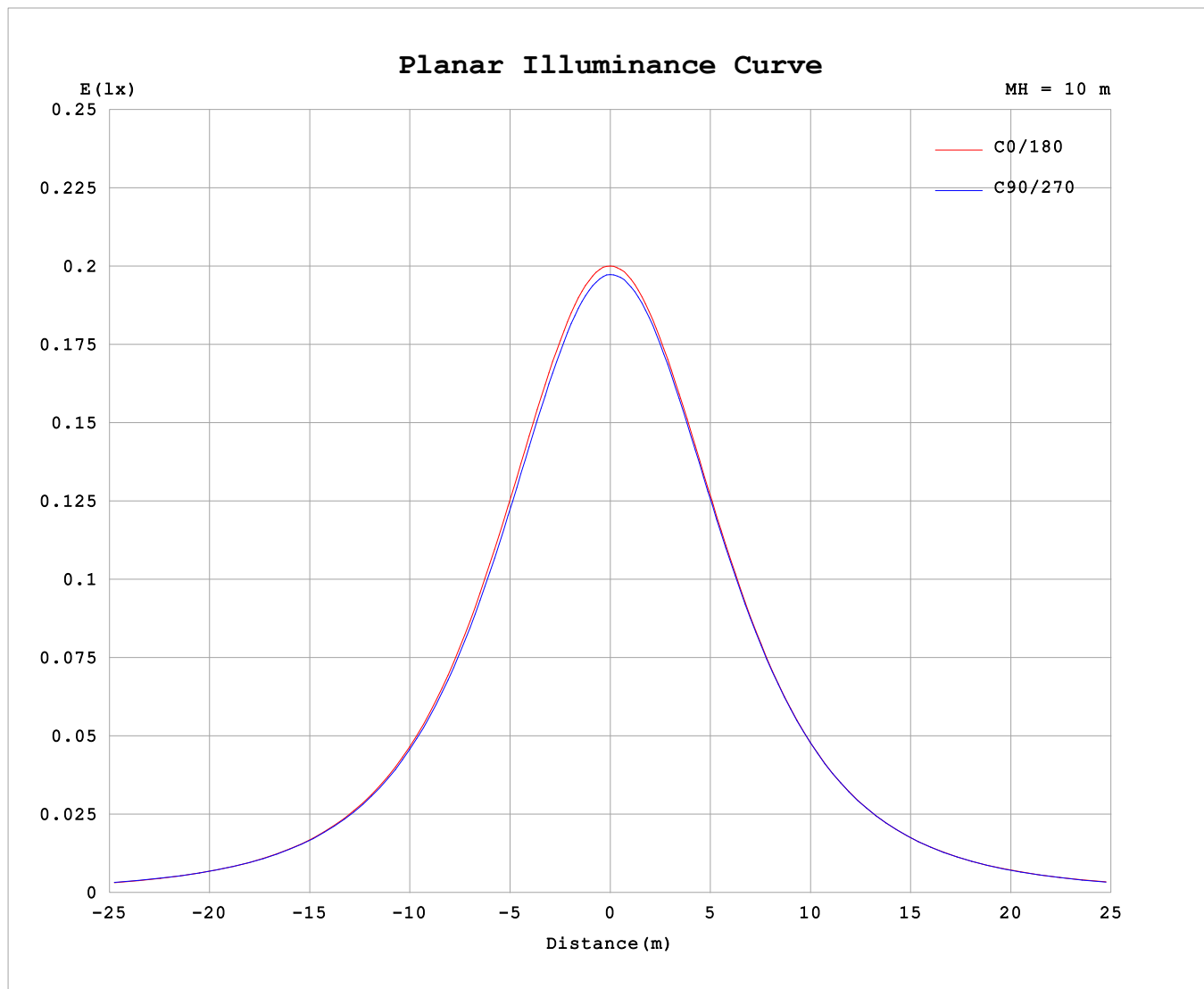
AvgL	cd/m2
L_0~180 (65) av	1017
L_0~180 (75) av	935
L_0~180 (85) av	911
L_90~270 (65) av	1029
L_90~270 (75) av	941
L_90~270 (85) av	790
L_45 (65) av	1024
L_45 (75) av	938
L_45 (85) av	864

Standard: GB/T 29293-2012

C Range: 0 - 360DEG
C Interval: 22.5DEG
Test Speed: HIGH
Temperature:25.3℃
Operators:Cloud
Test Date:2024-10-19

γ Range: 0 - 180DEG
γ Interval: 1.0DEG
Test System:EVERFINE GO-2000B_V1 SYSTEM V2.00.488
Humidity:65.0%
Test Distance:6.360m [K=1.0000]
Remarks: RED

Planar Illuminance Curve



C Range: 0 - 360DEG
C Interval: 22.5DEG
Test Speed: HIGH
Temperature: 25.3 °C
Operators: Cloud
Test Date: 2024-10-19

γ Range: 0 - 180DEG
 γ Interval: 1.0DEG
Test System: EVERFINE GO-2000B_V1 SYSTEM V2.00.488
Humidity: 65.0%
Test Distance: 6.360m [K=1.0000]
Remarks: RED

LUMINOUS DISTRIBUTION INTENSITY DATA

Test:U:24.00V I:0.2720A P:6.528W PF:1.000 Freq:0Hz Lamp Flux:60.2922x1 lm																		
NAME: SF28-24V-5050-72-DMX4-RGBW(3000K)									TYPE:					WEIGHT:				
SPEC.:									DIM.: Length=1m					SERIAL No.:				
MFR.:									SUR.:					Shielding Angle:				

Table--1

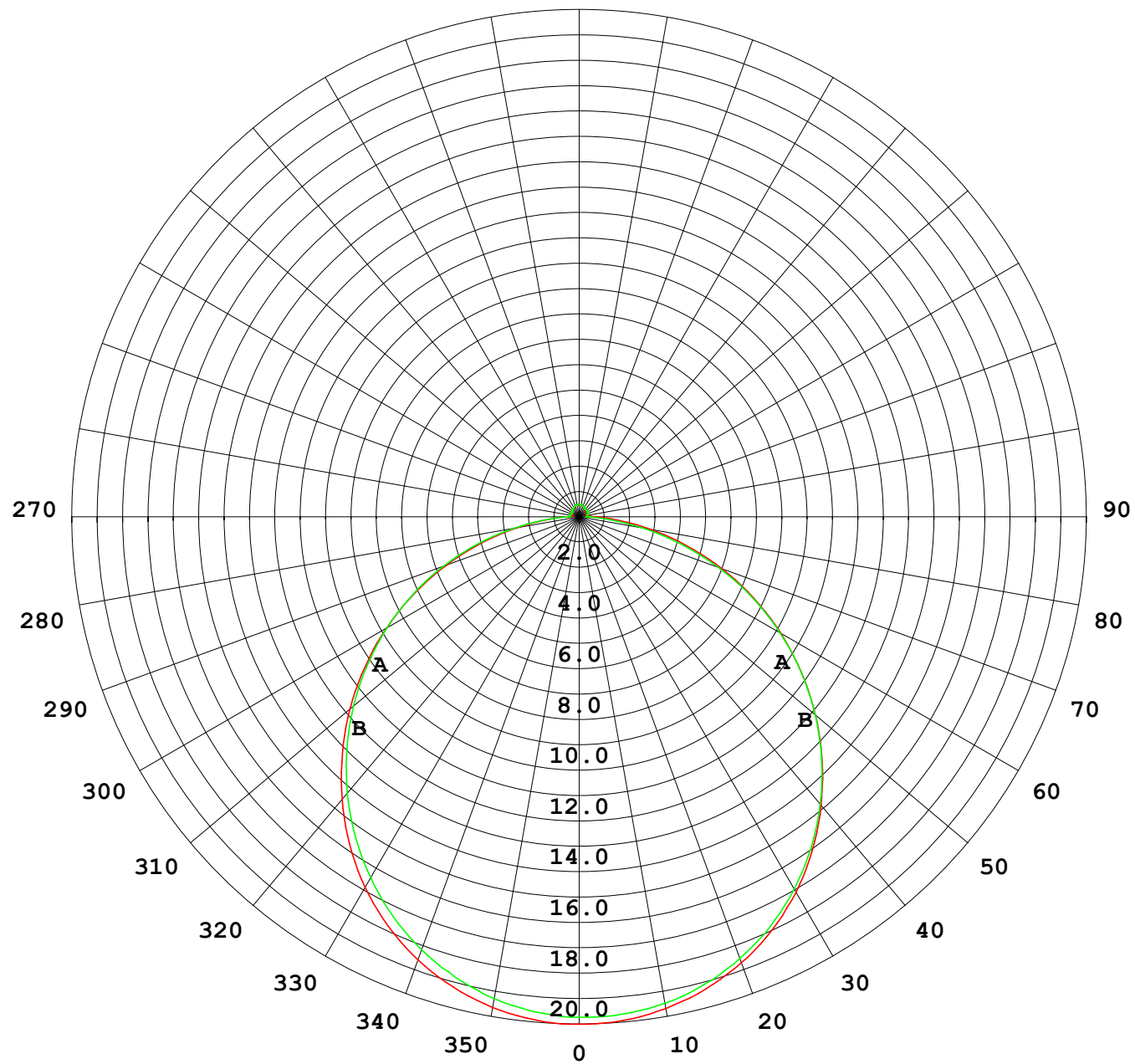
UNIT: cd

C (DEG) γ (DEG)		0	22.5	45	67.5	90	112.5	135	157.5	180	202.5	225	247.5	270	292.5	315	337.5			
0	19.8	19.8	19.8	19.8	19.8	19.8	19.8	19.8	19.8	19.8	19.8	19.8	19.8	19.8	19.8	19.8	19.8			
5	19.7	19.7	19.7	19.6	19.6	19.6	19.6	19.7	19.7	19.7	19.7	19.7	19.8	19.8	19.8	19.7	19.7			
10	19.4	19.4	19.4	19.3	19.3	19.3	19.4	19.4	19.5	19.5	19.5	19.6	19.5	19.5	19.5	19.5	19.5			
15	19.0	18.9	18.9	18.9	18.9	18.9	18.9	19.0	19.1	19.1	19.1	19.2	19.1	19.2	19.1	19.1	19.1			
20	18.4	18.3	18.3	18.2	18.2	18.2	18.3	18.4	18.5	18.6	18.6	18.6	18.6	18.6	18.6	18.5	18.5			
25	17.6	17.6	17.5	17.4	17.4	17.5	17.6	17.7	17.8	17.9	17.9	17.9	17.9	17.9	17.9	17.8	17.8			
30	16.7	16.6	16.6	16.5	16.5	16.5	16.7	16.8	16.9	17.0	17.0	17.0	17.0	17.0	17.0	17.0	16.9			
35	15.6	15.6	15.5	15.5	15.4	15.5	15.6	15.7	15.9	16.0	16.0	16.0	16.0	16.0	16.0	15.9	15.8			
40	14.4	14.4	14.3	14.3	14.3	14.4	14.4	14.5	14.7	14.8	14.9	14.9	14.8	14.8	14.8	14.8	14.6			
45	13.1	13.1	13.1	13.0	13.0	13.1	13.2	13.3	13.4	13.5	13.6	13.6	13.6	13.6	13.6	13.5	13.3			
50	11.7	11.7	11.7	11.7	11.6	11.7	11.8	11.9	12.0	12.1	12.2	12.2	12.2	12.2	12.2	12.1	11.9			
55	10.2	10.2	10.2	10.3	10.2	10.3	10.3	10.4	10.6	10.6	10.7	10.8	10.7	10.7	10.7	10.6	10.4			
60	8.66	8.69	8.70	8.79	8.76	8.84	8.84	8.94	9.07	9.11	9.19	9.21	9.17	9.13	9.13	9.01	8.85			
65	7.10	7.14	7.17	7.25	7.24	7.30	7.30	7.39	7.51	7.53	7.58	7.57	7.55	7.48	7.48	7.39	7.25			
70	5.50	5.56	5.59	5.68	5.70	5.72	5.73	5.81	5.91	5.91	5.93	5.88	5.86	5.80	5.80	5.74	5.63			
75	3.91	4.00	4.02	4.11	4.13	4.14	4.16	4.23	4.32	4.29	4.26	4.19	4.16	4.10	4.10	4.07	4.01			
80	2.43	2.50	2.54	2.59	2.60	2.63	2.64	2.71	2.79	2.74	2.67	2.56	2.50	2.47	2.47	2.49	2.48			
85	1.21	1.26	1.27	1.26	1.26	1.29	1.35	1.43	1.49	1.43	1.32	1.18	1.08	1.10	1.10	1.17	1.17			
90	0.50	0.51	0.52	0.46	0.41	0.48	0.60	0.66	0.68	0.66	0.54	0.41	0.30	0.37	0.37	0.41	0.48			
95	0.31	0.31	0.35	0.35	0.38	0.35	0.39	0.38	0.36	0.38	0.31	0.31	0.31	0.30	0.30	0.28	0.29			
100	0.29	0.31	0.34	0.35	0.38	0.35	0.36	0.33	0.29	0.32	0.31	0.31	0.32	0.30	0.30	0.29	0.27			
105	0.29	0.32	0.34	0.35	0.37	0.35	0.35	0.33	0.29	0.30	0.32	0.31	0.34	0.30	0.30	0.30	0.27			
110	0.30	0.34	0.34	0.35	0.33	0.36	0.35	0.34	0.29	0.29	0.32	0.32	0.36	0.32	0.32	0.31	0.27			
115	0.31	0.35	0.34	0.36	0.33	0.36	0.35	0.36	0.31	0.29	0.33	0.33	0.37	0.33	0.33	0.33	0.29			
120	0.33	0.36	0.35	0.36	0.34	0.37	0.36	0.37	0.32	0.31	0.35	0.34	0.38	0.33	0.34	0.34	0.30			
125	0.35	0.37	0.36	0.38	0.35	0.39	0.37	0.39	0.34	0.32	0.35	0.36	0.38	0.35	0.36	0.36	0.32			
130	0.36	0.38	0.36	0.38	0.36	0.40	0.38	0.41	0.35	0.33	0.37	0.36	0.39	0.36	0.36	0.37	0.34			
135	0.37	0.40	0.37	0.40	0.38	0.41	0.40	0.42	0.37	0.35	0.38	0.37	0.40	0.37	0.37	0.38	0.35			
140	0.39	0.41	0.39	0.41	0.40	0.42	0.41	0.43	0.39	0.37	0.40	0.38	0.41	0.38	0.40	0.40	0.37			
145	0.40	0.42	0.40	0.43	0.42	0.44	0.42	0.44	0.40	0.38	0.41	0.40	0.41	0.39	0.42	0.42	0.39			
150	0.42	0.43	0.42	0.45	0.43	0.46	0.44	0.46	0.42	0.40	0.43	0.41	0.43	0.41	0.43	0.43	0.41			
155	0.43	0.45	0.44	0.47	0.45	0.48	0.45	0.48	0.44	0.42	0.45	0.42	0.45	0.43	0.45	0.45	0.43			
160	0.45	0.47	0.46	0.48	0.47	0.49	0.46	0.49	0.46	0.44	0.46	0.44	0.46	0.44	0.46	0.47	0.44			
165	0.46	0.47	0.47	0.49	0.48	0.50	0.48	0.50	0.48	0.45	0.48	0.46	0.48	0.46	0.48	0.48	0.47			
170	0.47	0.49	0.48	0.50	0.48	0.50	0.48	0.50	0.49	0.47	0.49	0.47	0.50	0.48	0.49	0.49	0.48			
175	0.47	0.49	0.49	0.50	0.49	0.50	0.49	0.50	0.49	0.48	0.49	0.49	0.50	0.48	0.50	0.50	0.49			
180	0.49	0.49	0.49	0.50	0.50	0.50	0.50	0.50	0.48	0.49	0.49	0.50	0.50	0.50	0.50	0.50	0.50			

C Range: 0 - 360DEG
C Interval: 22.5DEG
Test Speed: HIGH
Temperature:25.3℃
Operators:Cloud
Test Date:2024-10-19

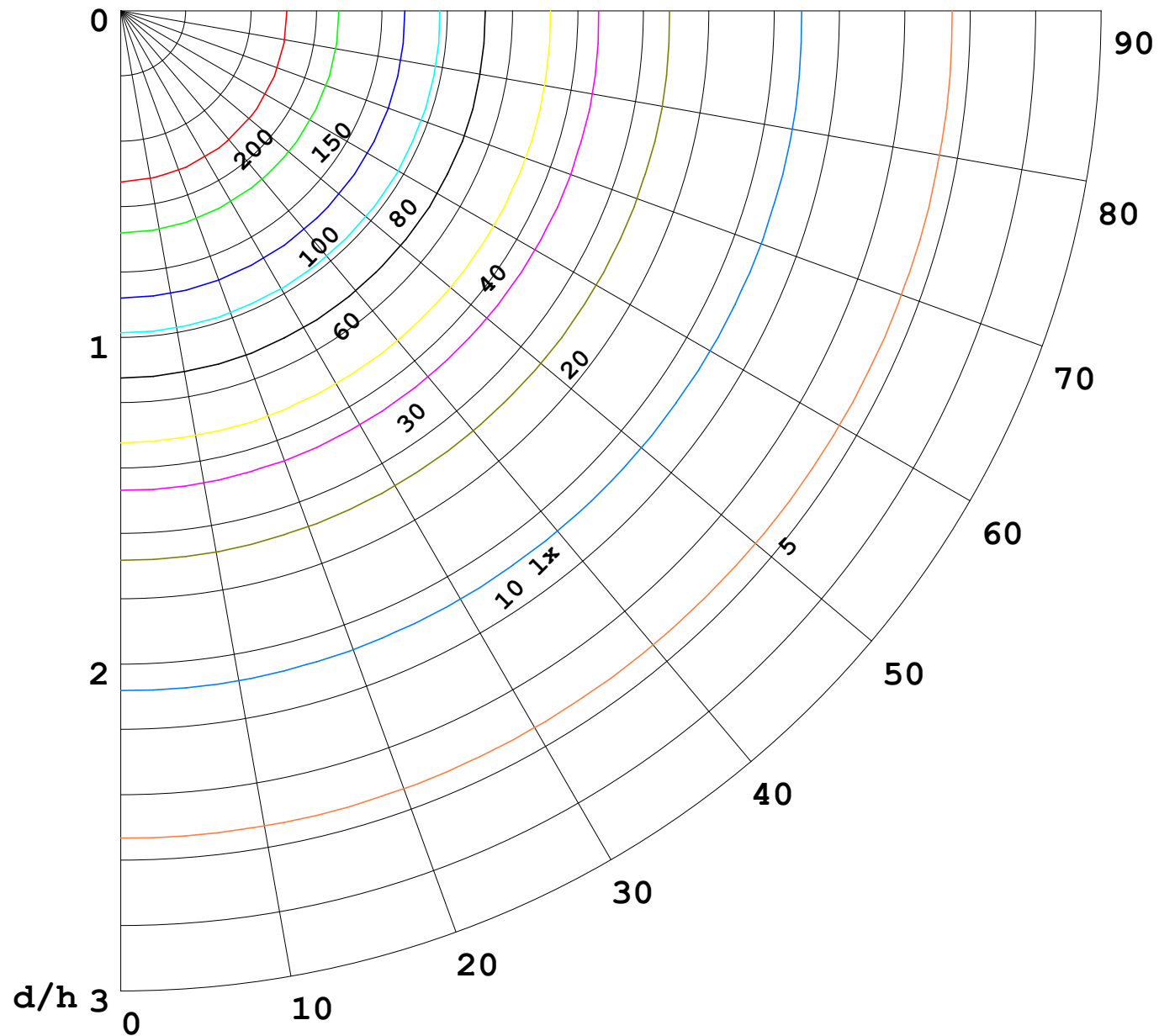
γ Range: 0 - 180DEG
γ Interval: 1.0DEG
Test System:EVERFINE GO-2000B_V1 SYSTEM V2.00.488
Humidity:65.0%
Test Distance:6.360m [K=1.0000]
Remarks: RED

I (cd)



1000 lm

$\kappa = 1$



F = 1000 lm
 K = 0.7
 Hcc = 0.8 m
 Hfc = 0.0 m
 Eave = 100 lx

	Pcc	Pw	Pfc
—————	70	50	30
—————	50	30	20

