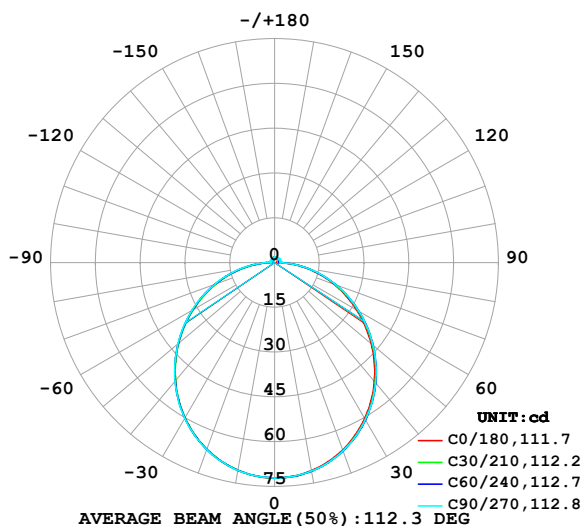


LUMINAIRE PHOTOMETRIC TEST REPORT

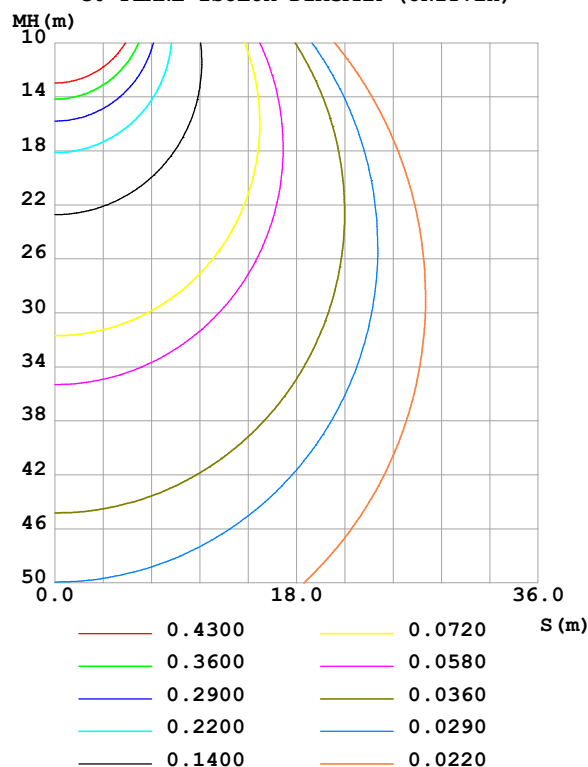
Test:U:24.00V I:0.5199A P:12.48W PF:1.000 Freq:0Hz Lamp Flux:220.253x1 lm		
NAME: SF28-24V-5050-72-P	TYPE:	WEIGHT:
SPEC.:	DIM.: Length=1m	SERIAL No.:
MFR.: OLympia lighting	SUR.:	Shielding Angle:

DATA OF LAMP		PHOTOMETRIC DATA Eff: 17.65 lm/W			
MODEL	5050	Imax (cd)	72.17	S/MH(C0/180)	1.24
NOMINAL POWER(W)	13	LOR(%)	100.0	S/MH(C90/270)	1.24
RATED VOLTAGE(V)	24	TOTAL FLUX(lm)	220.25	η UP,DN(C0-180)	2.3,48.1
NOMINAL FLUX(lm)	220.253	CIE CLASS	DIRECT	η UP,DN(C180-360)	1.9,47.7
LAMPS INSIDE	1	η up (%)	4.2	CIBSE SHR NOM	1.25
TEST VOLTAGE(V)		η down (%)	95.8	CIBSE SHR MAX	1.35

LUMINOUS INTENSITY DISTRIBUTION DIAGRAM



C0 PLANE ISOLUX DIAGRAM (UNIT:lx)



C Range: 0 - 360DEG
C Interval: 30.0DEG
Test Speed: HIGH
Temperature:25.3℃
Operators:
Test Date:2025-05-19

γ Range: 0 - 180DEG
 γ Interval: 1.0DEG
Test System:EVERFINE GO-2000B_V1 SYSTEM V2.00.488
Humidity:65.0%
Test Distance:6.360m [K=1.0000]
Remarks:

ZONAL FLUX DIAGRAM

ZONAL FLUX DIAGRAM:

γ	C0	C45	C90	C135	C180	C225	C270	C315	γ	Φ zone	Φ total	%lum, lamp
10	70.81	70.97	70.91	70.78	70.66	70.65	70.68	70.77	0- 10	6.821	6.821	3.1,3.1
20	66.76	67.10	67.09	66.77	66.56	66.54	66.65	66.78	10- 20	19.50	26.32	11.9,11.9
30	60.35	60.81	60.82	60.42	60.08	60.12	60.23	60.38	20- 30	29.43	55.75	25.3,25.3
40	51.98	52.60	52.64	52.13	51.72	51.75	51.90	52.11	30- 40	35.33	91.08	41.4,41.4
50	42.26	42.97	43.03	42.46	42.01	42.08	42.26	42.44	40- 50	36.58	127.7	58,58
60	31.79	32.51	32.63	31.99	31.58	31.67	31.93	32.06	50- 60	33.35	161.0	73.1,73.1
70	21.16	21.79	21.94	21.32	20.97	21.09	21.42	21.45	60- 70	26.44	187.5	85.1,85.1
80	10.77	11.26	11.39	10.81	10.54	10.70	11.12	11.07	70- 80	17.04	204.5	92.8,92.8
90	1.830	1.981	1.716	1.688	1.504	1.457	1.444	1.734	80- 90	6.489	211.0	95.8,95.8
100	0.9931	1.483	1.857	1.477	0.9128	1.114	1.476	1.107	90-100	1.425	212.4	96.4,96.4
110	1.134	1.583	1.938	1.582	1.045	1.222	1.539	1.192	100-110	1.429	213.8	97.1,97.1
120	1.275	1.645	1.929	1.646	1.172	1.317	1.560	1.267	110-120	1.431	215.3	97.7,97.7
130	1.396	1.682	1.898	1.682	1.293	1.392	1.568	1.326	120-130	1.346	216.6	98.3,98.3
140	1.506	1.711	1.854	1.716	1.434	1.469	1.525	1.344	130-140	1.195	217.8	98.9,98.9
150	1.609	1.731	1.828	1.750	1.566	1.562	1.528	1.441	140-150	1.001	218.8	99.3,99.3
160	1.713	1.759	1.828	1.781	1.696	1.692	1.640	1.605	150-160	0.7708	219.6	99.7,99.7
170	1.794	1.798	1.831	1.820	1.800	1.808	1.794	1.786	160-170	0.4972	220.1	99.9,99.9
180	1.837	1.848	1.860	1.849	1.834	1.848	1.863	1.852	170-180	0.1742	220.3	100,100
DEG	LUMINOUS INTENSITY:cd									UNIT:lm		

Conical surface Flux(90deg): 109.5 lm

%lum = 49.7%

%lamp = 49.7%

Conical surface Flux(130deg): 175.28 lm

%lum = 79.6%

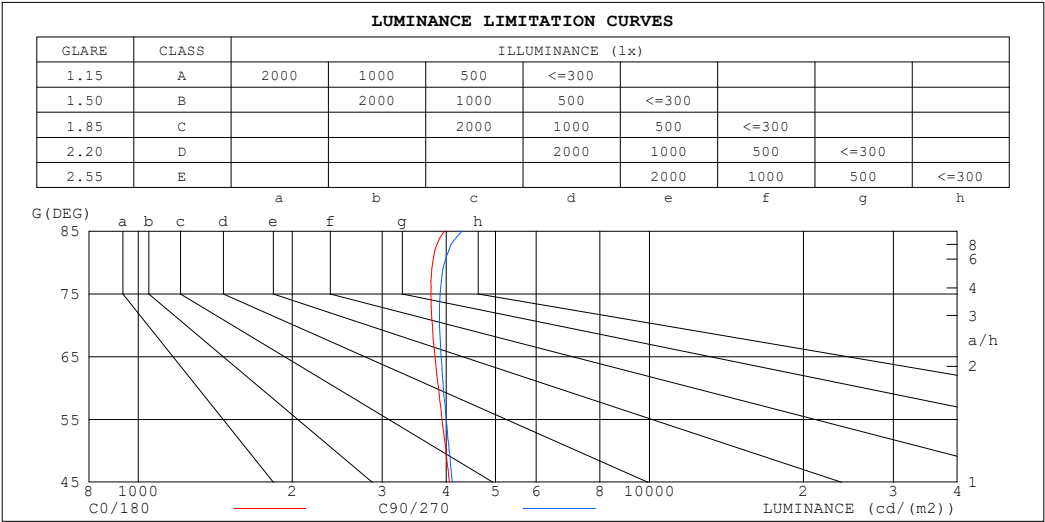
%lamp = 79.6%

C Range: 0 - 360DEG
 C Interval: 30.0DEG
 Test Speed: HIGH
 Temperature:25.3℃
 Operators:
 Test Date:2025-05-19

γ Range: 0 - 180DEG
 γ Interval: 1.0DEG
 Test System:EVERFINE GO-2000B_V1 SYSTEM V2.00.488
 Humidity:65.0%
 Test Distance:6.360m [K=1.0000]
 Remarks:

LUMINANCE LIMITATION CURVES

Test:U:24.00V I:0.5199A P:12.48W PF:1.000 Freq:0Hz Lamp Flux:220.253x1 lm		
NAME: SF28-24V-5050-72-P	TYPE:	WEIGHT:
SPEC.:	DIM.: Length=1m	SERIAL No.:
MFR.: OLympia lighting	SUR.:	Shielding Angle:



LUMINANCE cd/(m2)		
G (DEG)	C0/180	C90/270
85	3974	4302
80	3768	3974
75	3736	3895
70	3759	3885
65	3806	3913
60	3863	3952
55	3929	4001
50	3995	4054
45	4058	4110

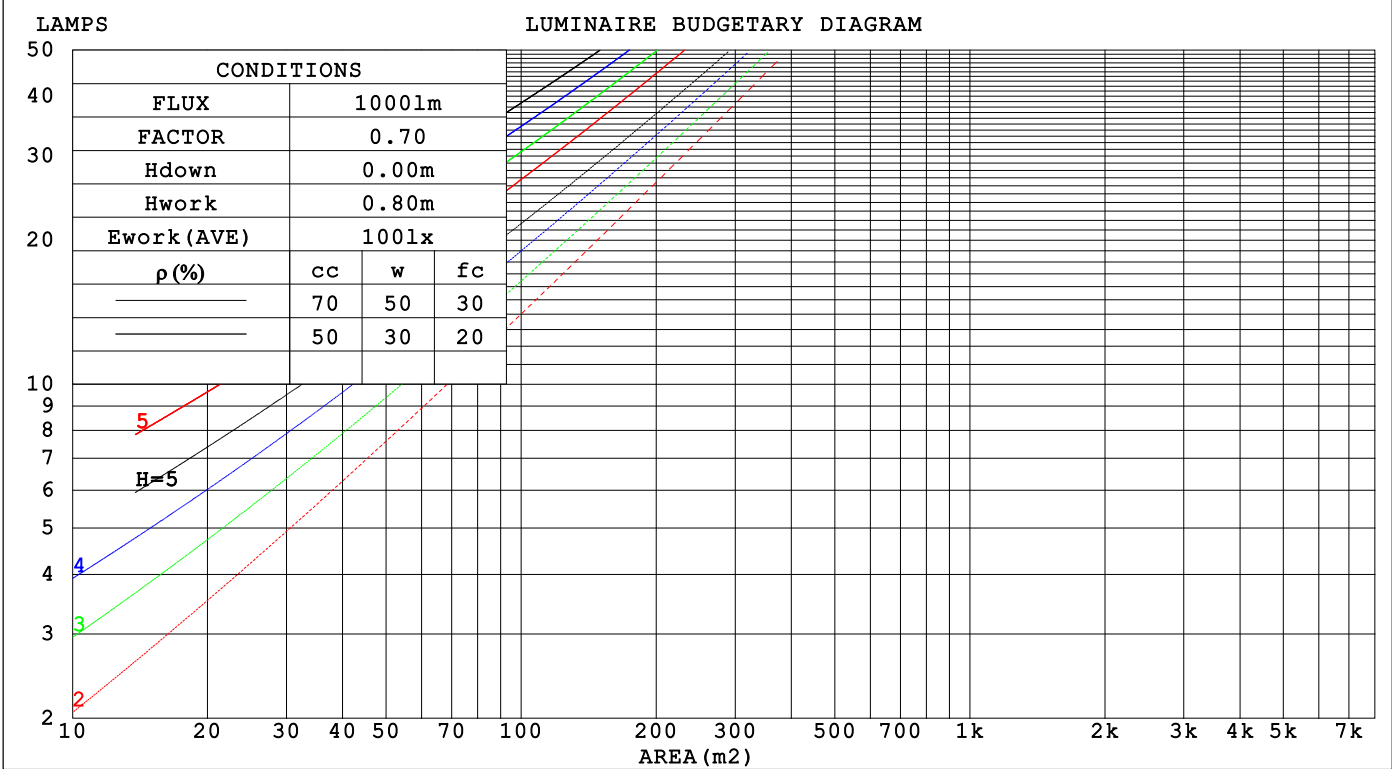
C Range: 0 - 360DEG
C Interval: 30.0DEG
Test Speed: HIGH
Temperature:25.3℃
Operators:
Test Date:2025-05-19

γ Range: 0 - 180DEG
γ Interval: 1.0DEG
Test System:EVERFINE GO-2000B_V1 SYSTEM V2.00.488
Humidity:65.0%
Test Distance:6.360m [K=1.0000]
Remarks:

CU AND LUMINAIRE BUDGETARY ESTIMATE DIAGRAM

Test:U:24.00V I:0.5199A P:12.48W PF:1.000 Freq:0Hz		
Lamp Flux:220.253x1 lm		
NAME: SF28-24V-5050-72-P	TYPE:	WEIGHT:
SPEC.:	DIM.: Length=1m	SERIAL No.:
MFR.: OLYMPIA lighting	SUR.:	Shielding Angle:

pcc	80%			70%			50%			30%			10%			0
p _w	50%	30%	10%	50%	30%	10%	50%	30%	10%	50%	30%	10%	50%	30%	10%	0
p _{fc}	20%			20%			20%			20%			20%			0
RCR	RCR:Room Cavity Ratio			Coefficients of Utilization(CU)												
0.0	1.18	1.18	1.18	1.15	1.15	1.15	1.09	1.09	1.09	1.03	1.03	1.03	.98	.98	.98	.96
1.0	1.02	.98	.93	.99	.95	.92	.94	.91	.88	.90	.87	.84	.85	.83	.81	.79
2.0	.89	.82	.76	.86	.80	.74	.82	.77	.72	.78	.74	.70	.74	.71	.67	.65
3.0	.78	.69	.62	.76	.68	.62	.72	.65	.60	.69	.63	.58	.66	.61	.57	.55
4.0	.69	.60	.53	.67	.59	.52	.64	.57	.51	.61	.55	.50	.58	.53	.49	.46
5.0	.61	.52	.45	.60	.51	.45	.57	.50	.44	.55	.48	.43	.52	.47	.42	.40
6.0	.55	.46	.39	.54	.45	.39	.52	.44	.38	.50	.43	.38	.48	.42	.37	.35
7.0	.50	.41	.35	.49	.40	.35	.47	.39	.34	.45	.38	.33	.43	.37	.33	.31
8.0	.45	.37	.31	.45	.36	.31	.43	.36	.30	.41	.35	.30	.40	.34	.29	.27
9.0	.42	.33	.28	.41	.33	.28	.39	.32	.27	.38	.32	.27	.37	.31	.27	.25
10.0	.38	.31	.25	.38	.30	.25	.36	.30	.25	.35	.29	.24	.34	.28	.24	.22

C Range: 0 - 360DEG
C Interval: 30.0DEG
Test Speed: HIGH
Temperature:25.3℃
Operators:
Test Date:2025-05-19γ Range: 0 - 180DEG
γ Interval: 1.0DEG
Test System:EVERFINE GO-2000B_V1 SYSTEM V2.00.488
Humidity:65.0%
Test Distance:6.360m [K=1.0000]
Remarks:

WEC AND CCEC

Test:U:24.00V I:0.5199A P:12.48W PF:1.000 Freq:0Hz Lamp Flux:220.253x1 lm		
NAME: SF28-24V-5050-72-P	TYPE:	WEIGHT:
SPEC.:	DIM.: Length=1m	SERIAL No.:
MFR.: OLympia lighting	SUR.:	Shielding Angle:

pcc	80%			70%			50%			30%			10%			0
pw	50%	30%	10%	50%	30%	10%	50%	30%	10%	50%	30%	10%	50%	30%	10%	0
pfc	20%			20%			20%			20%			20%			0
RCR	RCR:Room Cavity Ratio						Wall Exitance Coefficients(WEC)									
0.0																
1.0	.325	.185	.059	.317	.181	.057	.301	.173	.055	.286	.165	.053	.273	.158	.051	
2.0	.300	.164	.050	.293	.161	.050	.279	.155	.048	.266	.149	.047	.254	.144	.045	
3.0	.275	.146	.044	.268	.144	.043	.256	.139	.042	.244	.134	.041	.234	.129	.040	
4.0	.252	.131	.039	.246	.129	.038	.235	.125	.037	.225	.121	.036	.215	.117	.036	
5.0	.232	.118	.034	.227	.117	.034	.217	.113	.033	.208	.110	.033	.199	.106	.032	
6.0	.215	.108	.031	.210	.106	.031	.201	.103	.030	.193	.100	.029	.185	.097	.029	
7.0	.200	.099	.028	.195	.097	.028	.187	.095	.027	.180	.092	.027	.173	.090	.026	
8.0	.186	.091	.026	.182	.090	.025	.175	.087	.025	.168	.085	.025	.162	.083	.024	
9.0	.174	.084	.024	.171	.083	.023	.164	.081	.023	.158	.079	.023	.152	.077	.022	
10.0	.164	.078	.022	.161	.078	.022	.155	.076	.021	.149	.074	.021	.143	.072	.021	

pcc	80%			70%			50%			30%			10%			0
pw	50%	30%	10%	50%	30%	10%	50%	30%	10%	50%	30%	10%	50%	30%	10%	0
pfc	20%			20%			20%			20%			20%			0
RCR	RCR:Room Cavity Ratio						Ceiling Cavity Exitance Coefficients (CCEC)									
0.0	.223	.223	.223	.190	.190	.190	.130	.130	.130	.075	.075	.075	.024	.024	.024	
1.0	.214	.188	.166	.183	.162	.142	.125	.111	.099	.072	.064	.057	.023	.021	.019	
2.0	.206	.164	.130	.176	.142	.112	.121	.098	.078	.070	.057	.046	.022	.018	.015	
3.0	.198	.147	.106	.170	.127	.092	.117	.088	.065	.067	.051	.038	.022	.017	.012	
4.0	.191	.134	.091	.163	.116	.079	.112	.081	.055	.065	.047	.033	.021	.015	.011	
5.0	.183	.124	.080	.157	.107	.069	.108	.075	.049	.063	.044	.029	.020	.014	.010	
6.0	.176	.115	.072	.151	.100	.063	.104	.070	.044	.060	.041	.026	.020	.013	.009	
7.0	.169	.109	.066	.145	.094	.058	.100	.066	.041	.058	.039	.024	.019	.013	.008	
8.0	.162	.103	.062	.140	.089	.054	.097	.063	.038	.056	.037	.023	.018	.012	.008	
9.0	.156	.098	.058	.135	.085	.051	.093	.060	.036	.054	.035	.022	.018	.012	.007	
10.0	.151	.094	.056	.130	.081	.049	.090	.057	.035	.053	.034	.021	.017	.011	.007	

C Range: 0 - 360DEG
C Interval: 30.0DEG
Test Speed: HIGH
Temperature:25.3℃
Operators:
Test Date:2025-05-19

γ Range: 0 - 180DEG
γ Interval: 1.0DEG
Test System:EVERFINE GO-2000B_V1 SYSTEM V2.00.488
Humidity:65.0%
Test Distance:6.360m [K=1.0000]
Remarks:

UGR(Unified Glare Rating) Table

Test:U:24.00V I:0.5199A P:12.48W PF:1.000 Freq:0Hz Lamp Flux:220.253x1 lm											
NAME: SF28-24V-5050-72-P					TYPE:			WEIGHT:			
SPEC.:					DIM.: Length=1m			SERIAL No.:			
MFR.: OLympia lighting					SUR.:			Shielding Angle:			
ceiling/cavity	0.7	0.7	0.5	0.5	0.3	0.7	0.7	0.5	0.5	0.3	
walls	0.5	0.3	0.5	0.3	0.3	0.5	0.3	0.5	0.3	0.3	
working plane	0.2	0.2	0.2	0.2	0.2	0.2	0.2	0.2	0.2	0.2	
Room dimensions		Viewed crosswise					Viewed endwise				
x = 2H y = 2H	2H	21.7	23.1	22.0	23.4	23.7	21.7	23.2	22.1	23.5	23.8
	3H	23.3	24.7	23.7	25.0	25.3	23.4	24.8	23.8	25.1	25.4
	4H	24.1	25.4	24.4	25.7	26.0	24.2	25.5	24.6	25.8	26.2
	6H	24.7	25.9	25.1	26.2	26.6	24.8	26.1	25.2	26.4	26.8
	8H	24.9	26.1	25.3	26.5	26.8	25.1	26.3	25.5	26.6	27.0
	12H	25.1	26.2	25.5	26.6	27.0	25.3	26.5	25.7	26.8	27.2
4H	2H	22.3	23.6	22.7	23.9	24.3	22.4	23.7	22.7	24.0	24.3
	3H	24.2	25.3	24.6	25.7	26.1	24.3	25.4	24.7	25.8	26.2
	4H	25.1	26.1	25.5	26.5	26.9	25.2	26.2	25.6	26.6	27.0
	6H	25.8	26.8	26.3	27.2	27.6	26.0	26.9	26.4	27.3	27.8
	8H	26.1	27.0	26.6	27.4	27.9	26.3	27.2	26.8	27.6	28.1
	12H	26.4	27.2	26.9	27.7	28.2	26.6	27.4	27.1	27.8	28.3
8H	4H	25.4	26.3	25.9	26.7	27.2	25.5	26.4	26.0	26.8	27.3
	6H	26.4	27.1	26.9	27.6	28.1	26.5	27.2	27.0	27.7	28.2
	8H	26.8	27.4	27.3	27.9	28.5	27.0	27.6	27.5	28.1	28.6
	12H	27.2	27.7	27.7	28.3	28.8	27.4	27.9	27.9	28.4	29.0
12H	4H	25.4	26.2	25.9	26.7	27.2	25.5	26.3	26.0	26.8	27.3
	6H	26.5	27.1	27.0	27.6	28.2	26.6	27.2	27.1	27.7	28.3
	8H	27.0	27.5	27.5	28.0	28.6	27.1	27.7	27.7	28.2	28.8
Variations with the observer position at spacings(CIE Pub.117):											
S = 1.0H		+ 0.1 / - 0.2					+ 0.1 / - 0.2				
1.5H		+ 0.2 / - 0.3					+ 0.2 / - 0.3				
2.0H		+ 0.1 / - 0.3					+ 0.1 / - 0.3				

CIE Pub.117, 220.3 lm Total Lamp Luminous Flux Correct (8log(F/F0) = -5.3)
Area: 0.0165 m2

C Range: 0 - 360DEG
C Interval: 30.0DEG
Test Speed: HIGH
Temperature:25.3℃
Operators:
Test Date:2025-05-19

γ Range: 0 - 180DEG
γ Interval: 1.0DEG
Test System:EVERFINE GO-2000B_V1 SYSTEM V2.00.488
Humidity:65.0%
Test Distance:6.360m [K=1.0000]
Remarks:

UTILIZATION FACTORS TABLE

Test:U:24.00V I:0.5199A P:12.48W PF:1.000 Freq:0Hz Lamp Flux:220.253x1 lm		
NAME: SF28-24V-5050-72-P	TYPE:	WEIGHT:
SPEC.:	DIM.: Length=1m	SERIAL No.:
MFR.: OLympia lighting	SUR.:	Shielding Angle:

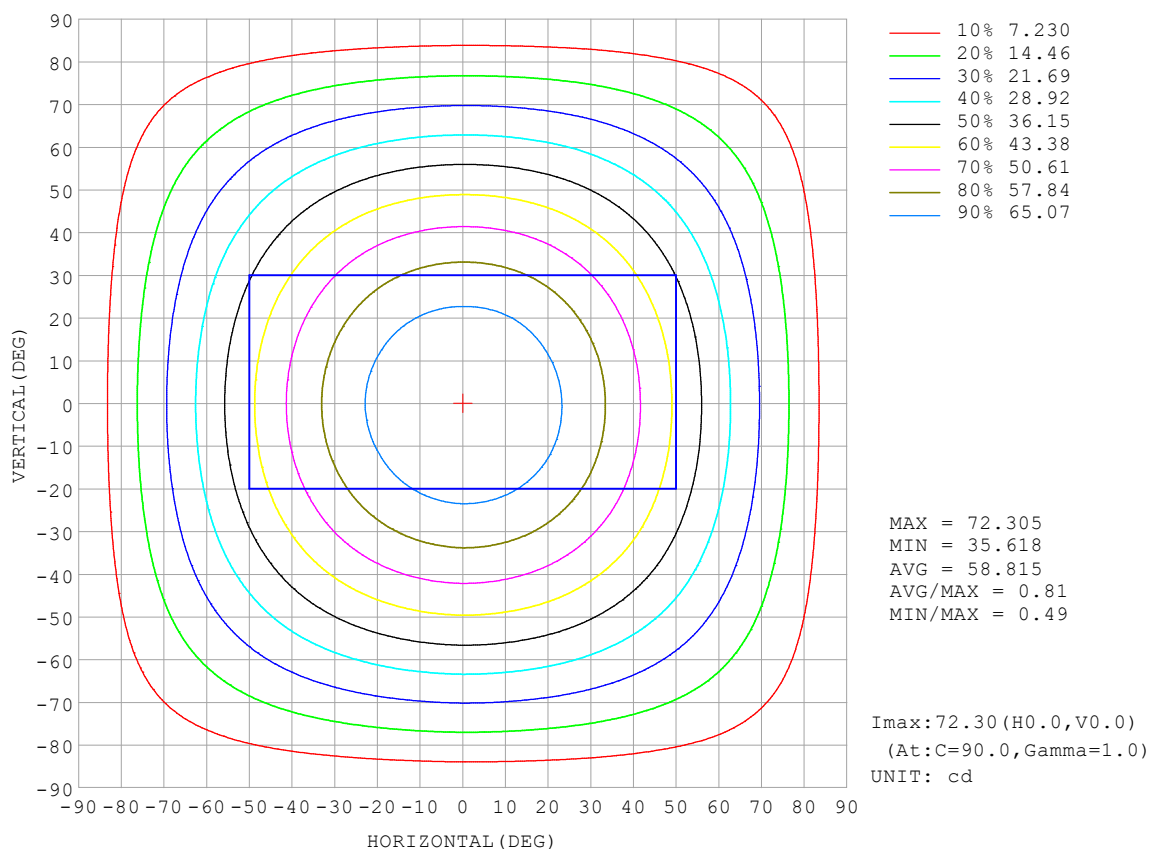
REFLECTANCE										
Ceiling	0.8	0.8	0.8	0.7	0.7	0.7	0.5	0.5	0.5	0
Walls	0.7	0.5	0.3	0.7	0.5	0.3	0.7	0.5	0.3	0
Working plane	0.2	0.2	0.2	0.2	0.2	0.2	0.2	0.2	0.2	0
ROOM INDEX	UTILIZATION FACTORS (PERCENT) $k(RI) \times RCR = 5$									
$k = 0.60$	56	44	37	55	44	37	53	43	36	30
0.80	65	54	46	64	53	46	62	52	45	38
1.00	74	62	55	72	61	54	70	63	54	46
1.25	81	70	62	79	69	62	76	67	61	53
1.50	86	75	68	84	74	67	80	72	66	58
2.00	93	84	77	90	82	76	86	79	74	65
2.50	97	88	82	94	87	81	90	84	79	69
3.00	100	93	87	98	91	86	93	87	83	73
4.00	104	98	93	101	96	91	97	92	88	78
5.00	107	102	97	104	99	95	99	95	92	81
ROOM INDEX	UF (total)									Direct
According to DIN EN 13032-2 2004			Suspended					SHRNOM = 1.25		

C Range: 0 - 360DEG
 C Interval: 30.0DEG
 Test Speed: HIGH
 Temperature: 25.3°C
 Operators:
 Test Date: 2025-05-19

γ Range: 0 - 180DEG
 γ Interval: 1.0DEG
 Test System: EVERFINE GO-2000B_V1 SYSTEM V2.00.488
 Humidity: 65.0%
 Test Distance: 6.360m [K=1.0000]
 Remarks:

ISOCANDELA DIAGRAM

Test:U:24.00V I:0.5199A P:12.48W PF:1.000 Freq:0Hz Lamp Flux:220.253x1 lm		
NAME: SF28-24V-5050-72-P	TYPE:	WEIGHT:
SPEC.:	DIM.: Length=1m	SERIAL No.:
MFR.: OLympia lighting	SUR.:	Shielding Angle:

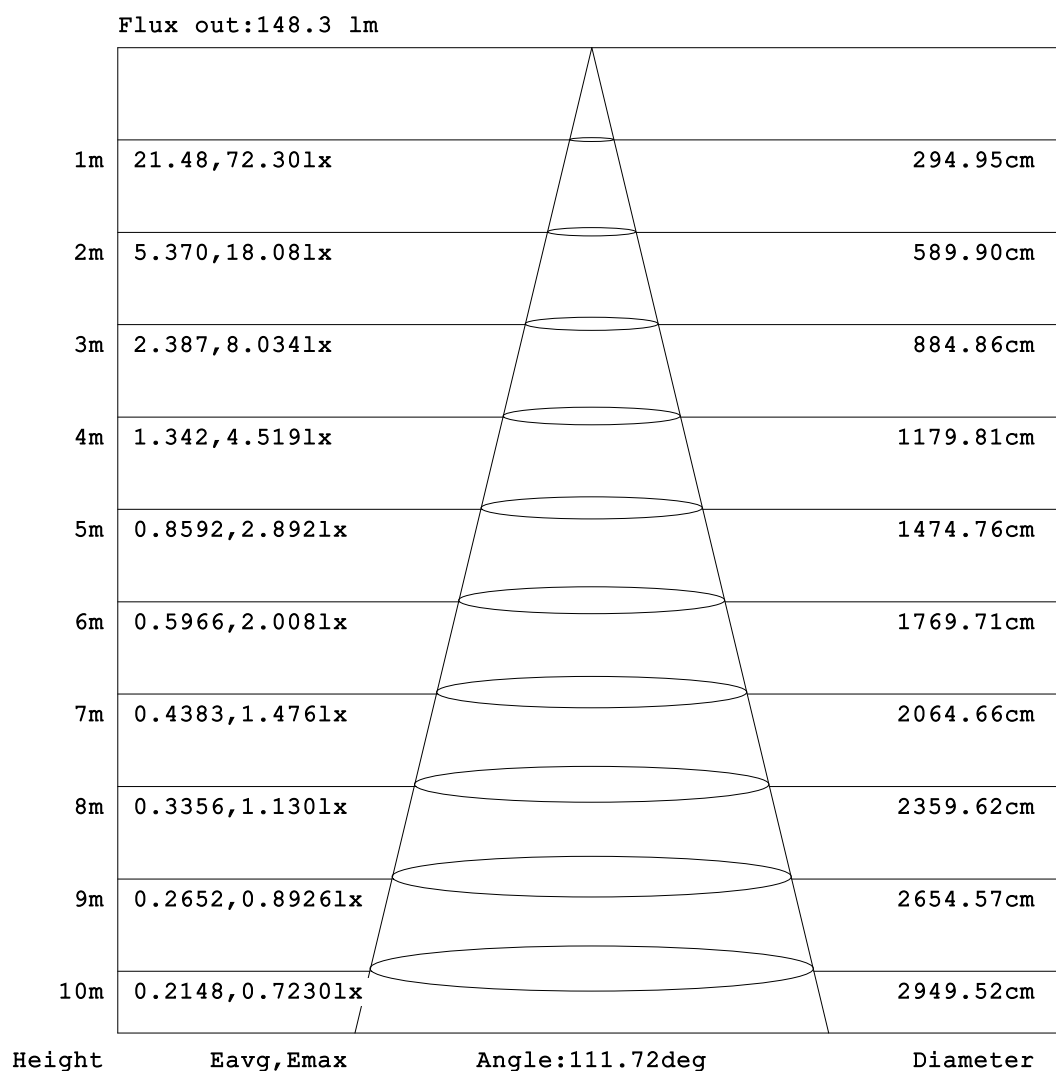


C Range: 0 - 360DEG
C Interval: 30.0DEG
Test Speed: HIGH
Temperature: 25.3°C
Operators:
Test Date: 2025-05-19

γ Range: 0 - 180DEG
γ Interval: 1.0DEG
Test System: EVERFINE GO-2000B_V1 SYSTEM V2.00.488
Humidity: 65.0%
Test Distance: 6.360m [K=1.0000]
Remarks:

AAI Figure

Test:U:24.00V I:0.5199A P:12.48W PF:1.000 Freq:0Hz Lamp Flux:220.253x1 lm		
NAME: SF28-24V-5050-72-P	TYPE:	WEIGHT:
SPEC.:	DIM.: Length=1m	SERIAL No.:
MFR.: OLympia lighting	SUR.:	Shielding Angle:



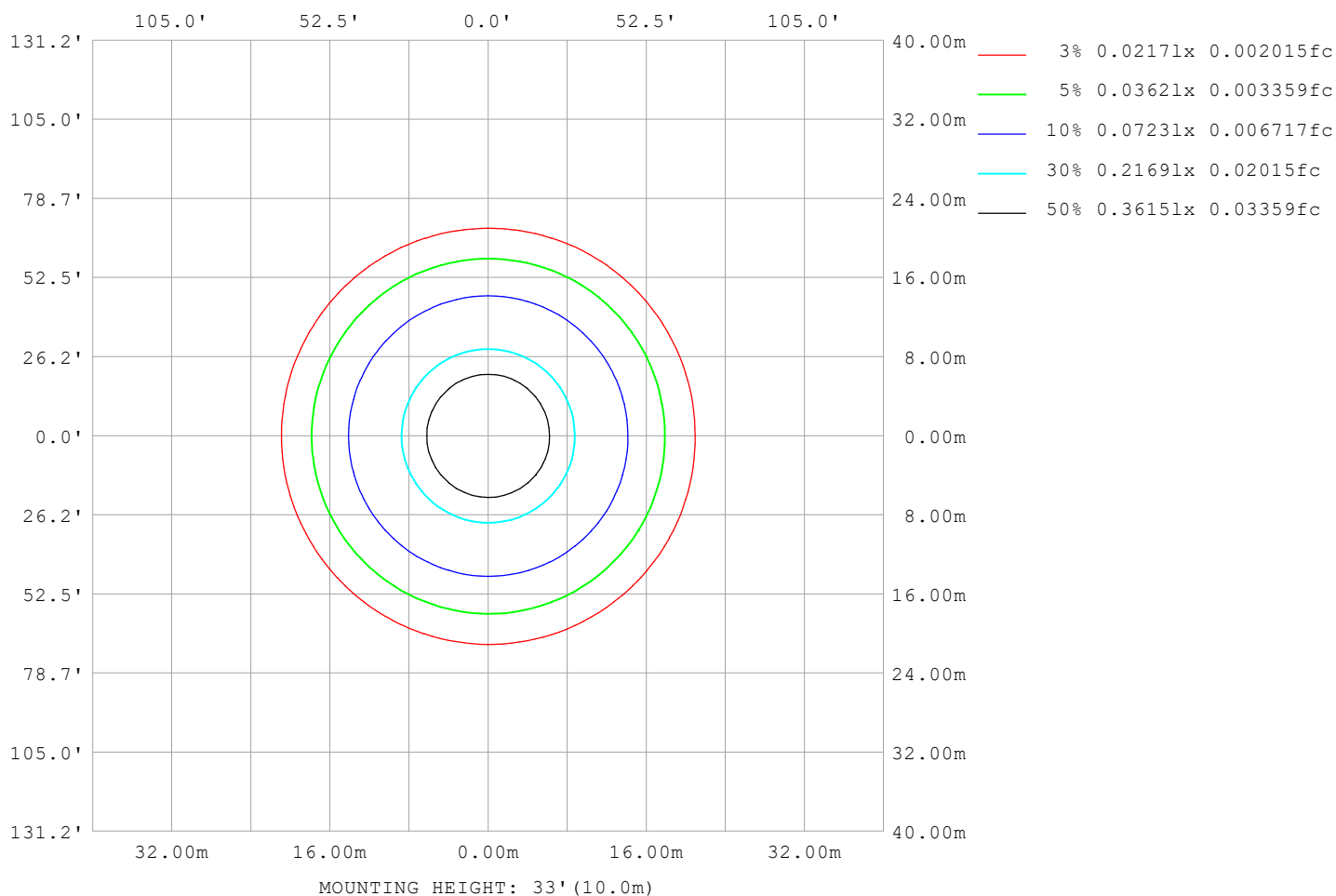
Note:The Curves indicate the illuminated area and the average illumination when the luminaire is at different distance.

C Range: 0 - 360DEG
C Interval: 30.0DEG
Test Speed: HIGH
Temperature:25.3℃
Operators:
Test Date:2025-05-19

γ Range: 0 - 180DEG
γ Interval: 1.0DEG
Test System:EVERFINE GO-2000B_V1 SYSTEM V2.00.488
Humidity:65.0%
Test Distance:6.360m [K=1.0000]
Remarks:

ISOLUX DIAGRAM

Test:U:24.00V I:0.5199A P:12.48W PF:1.000 Freq:0Hz Lamp Flux:220.253x1 lm		
NAME: SF28-24V-5050-72-P	TYPE:	WEIGHT:
SPEC.:	DIM.: Length=1m	SERIAL No.:
MFR.: OLympia lighting	SUR.:	Shielding Angle:



C Range: 0 - 360DEG
C Interval: 30.0DEG
Test Speed: HIGH
Temperature: 25.3°C
Operators:
Test Date: 2025-05-19

γ Range: 0 - 180DEG
γ Interval: 1.0DEG
Test System: EVERFINE GO-2000B_V1 SYSTEM V2.00.488
Humidity: 65.0%
Test Distance: 6.360m [K=1.0000]
Remarks:

LED Avg.L Report

Test:U:24.00V I:0.5199A P:12.48W PF:1.000 Freq:0Hz Lamp Flux:220.253x1 lm		
NAME: SF28-24V-5050-72-P	TYPE:	WEIGHT:
SPEC.:	DIM.: Length=1m	SERIAL No.:
MFR.: OLympia lighting	SUR.:	Shielding Angle:

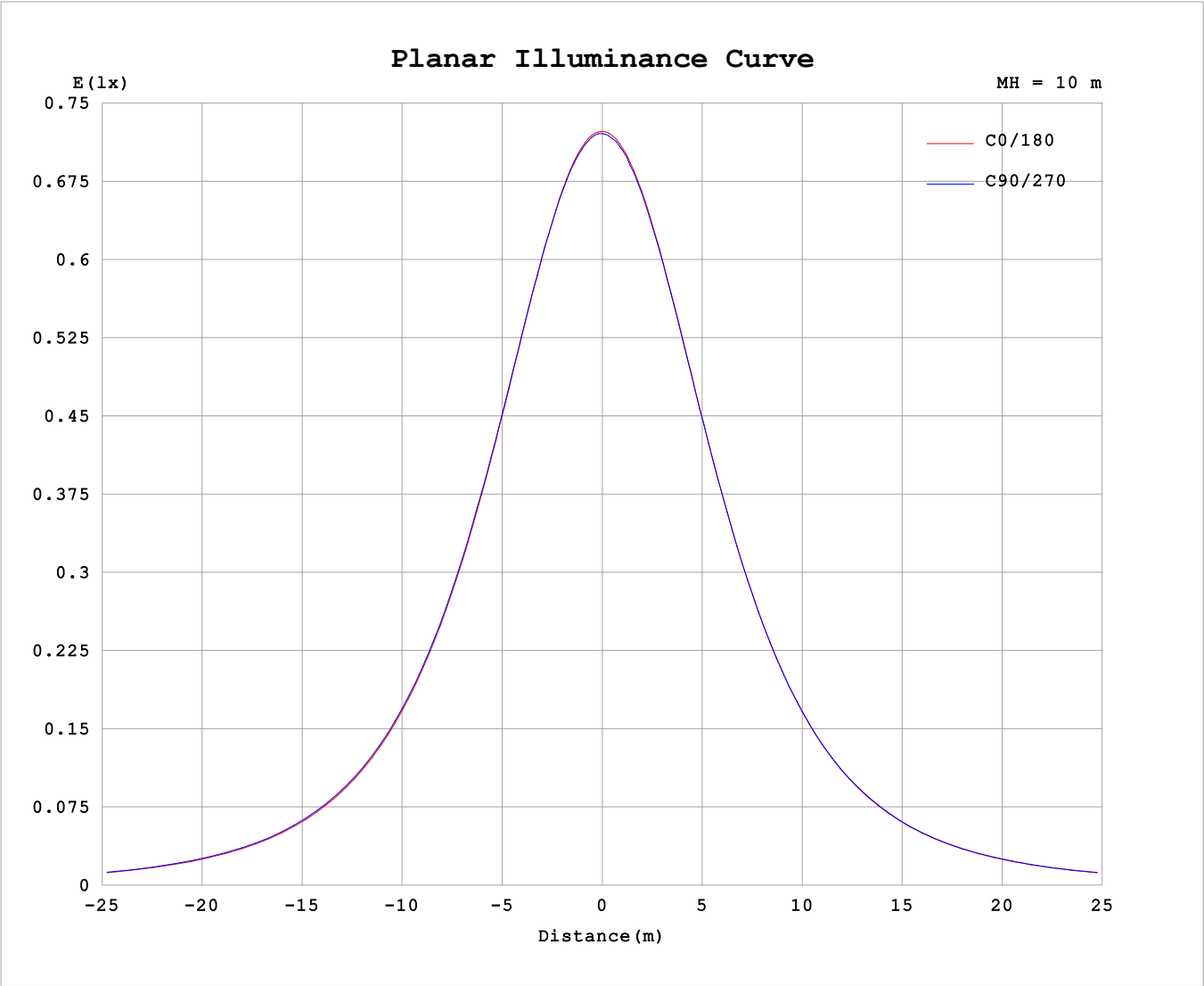
AvgL	cd/m2
L_0~180 (65) av	3783
L_0~180 (75) av	3704
L_0~180 (85) av	3871
L_90~270 (65) av	3869
L_90~270 (75) av	3849
L_90~270 (85) av	4249
L_45 (65) av	3835
L_45 (75) av	3782
L_45 (85) av	4058

Standard: GB/T 29293-2012

C Range: 0 - 360DEG
C Interval: 30.0DEG
Test Speed: HIGH
Temperature:25.3℃
Operators:
Test Date:2025-05-19

γ Range: 0 - 180DEG
γ Interval: 1.0DEG
Test System:EVERFINE GO-2000B_V1 SYSTEM V2.00.488
Humidity:65.0%
Test Distance:6.360m [K=1.0000]
Remarks:

Planar Illuminance Curve



C Range: 0 - 360DEG	γ Range: 0 - 180DEG
C Interval: 30.0DEG	γ Interval: 1.0DEG
Test Speed: HIGH	Test System:EVERFINE GO-2000B_V1 SYSTEM V2.00.488
Temperature:25.3℃	Humidity:65.0%
Operators:	Test Distance:6.360m [K=1.0000]
Test Date:2025-05-19	Remarks:

LUMINOUS DISTRIBUTION INTENSITY DATA

Test:U:24.00V I:0.5199A P:12.48W PF:1.000 Freq:0Hz Lamp Flux:220.253x1 lm																	
NAME: SF28-24V-5050-72-P									TYPE:			WEIGHT:					
SPEC.:									DIM.: Length=1m			SERIAL No.:					
MFR.: OLympia lighting									SUR.:			Shielding Angle:					

Table--1

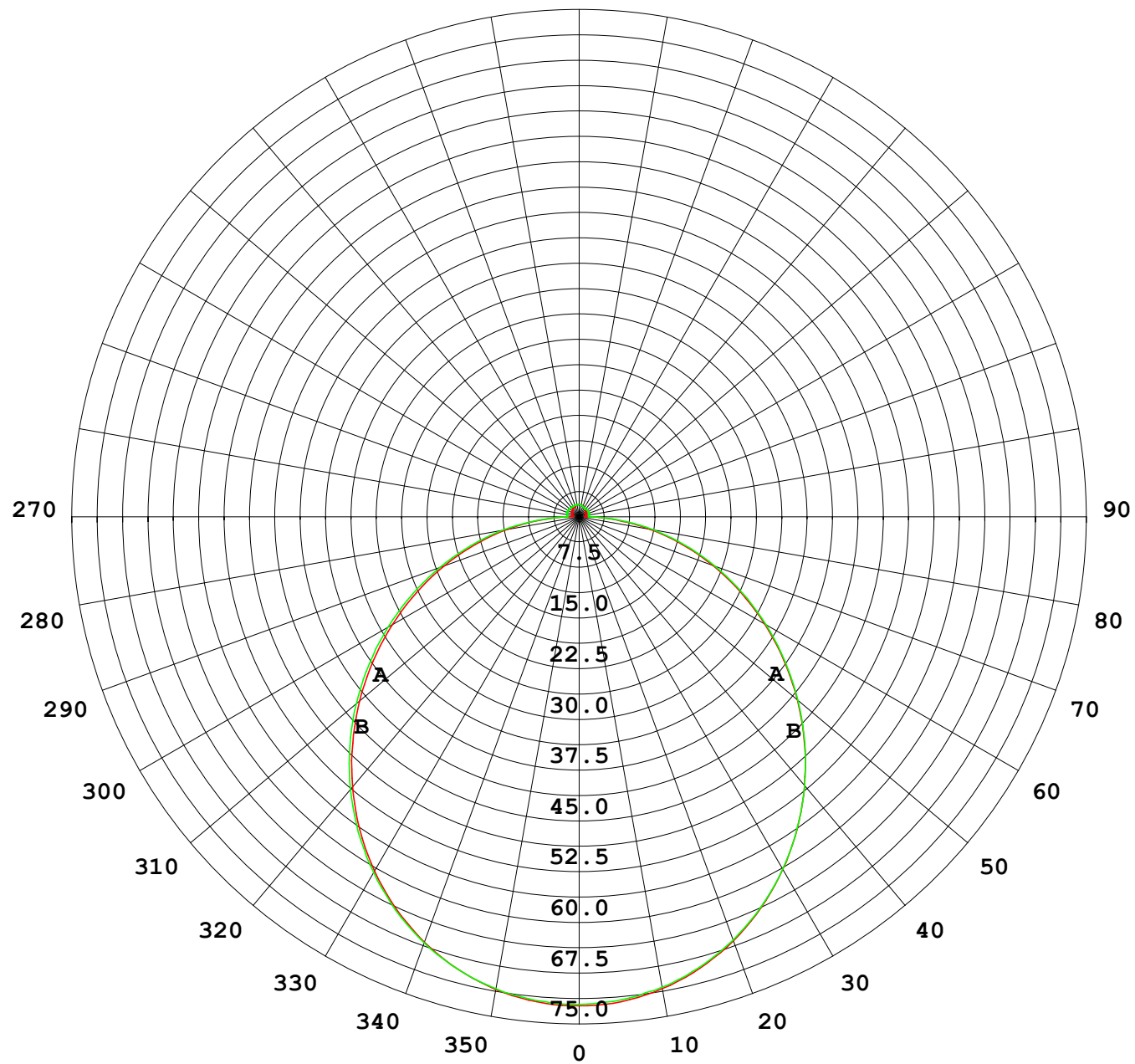
UNIT: cd

C (DEG) γ (DEG)	0	30	60	90	120	150	180	210	240	270	300	330						
0	72.1	72.1	72.1	72.1	72.1	72.1	72.1	72.1	72.1	72.1	72.1	72.1						
5	71.8	71.9	71.9	71.9	71.8	71.8	71.8	71.7	71.7	71.7	71.8	71.8						
10	70.8	71.0	71.0	70.9	70.8	70.7	70.7	70.6	70.7	70.7	70.8	70.8						
15	69.1	69.3	69.3	69.3	69.2	69.0	68.9	68.9	68.9	69.0	69.1	69.1						
20	66.8	67.0	67.2	67.1	66.9	66.7	66.6	66.5	66.6	66.7	66.8	66.8						
25	63.8	64.2	64.3	64.3	64.1	63.8	63.6	63.5	63.6	63.7	63.9	63.9						
30	60.3	60.7	60.9	60.8	60.6	60.3	60.1	60.1	60.2	60.2	60.4	60.4						
35	56.4	56.8	57.0	57.0	56.7	56.4	56.1	56.1	56.2	56.3	56.5	56.5						
40	52.0	52.5	52.7	52.6	52.3	52.0	51.7	51.7	51.8	51.9	52.1	52.1						
45	47.2	47.8	48.0	48.0	47.6	47.2	47.0	46.9	47.1	47.2	47.4	47.4						
50	42.3	42.8	43.1	43.0	42.7	42.3	42.0	42.0	42.2	42.3	42.5	42.4						
55	37.1	37.7	37.9	37.9	37.5	37.1	36.8	36.8	37.1	37.2	37.3	37.3						
60	31.8	32.4	32.6	32.6	32.2	31.8	31.6	31.5	31.8	31.9	32.1	32.0						
65	26.5	27.0	27.3	27.3	26.9	26.4	26.3	26.2	26.5	26.7	26.8	26.7						
70	21.2	21.7	21.9	21.9	21.5	21.1	21.0	20.9	21.2	21.4	21.5	21.4						
75	15.9	16.4	16.6	16.6	16.2	15.8	15.7	15.7	16.0	16.2	16.3	16.1						
80	10.8	11.2	11.3	11.4	11.0	10.6	10.5	10.5	10.9	11.1	11.2	11.0						
85	5.70	6.07	6.18	6.19	5.80	5.50	5.43	5.40	5.78	6.03	6.09	5.88						
90	1.83	2.02	1.94	1.72	1.75	1.62	1.50	1.42	1.50	1.44	1.70	1.76						
95	0.94	1.25	1.60	1.79	1.61	1.23	0.86	0.90	1.23	1.43	1.23	0.91						
100	0.99	1.31	1.66	1.86	1.67	1.29	0.91	0.93	1.29	1.48	1.28	0.93						
105	1.07	1.37	1.71	1.90	1.72	1.35	0.97	1.00	1.35	1.51	1.29	0.99						
110	1.13	1.42	1.75	1.94	1.76	1.40	1.05	1.06	1.39	1.54	1.34	1.05						
115	1.21	1.47	1.77	1.94	1.78	1.46	1.11	1.12	1.43	1.56	1.40	1.11						
120	1.28	1.51	1.78	1.93	1.80	1.49	1.17	1.18	1.45	1.56	1.37	1.17						
125	1.34	1.54	1.79	1.92	1.80	1.53	1.24	1.24	1.48	1.56	1.38	1.21						
130	1.40	1.57	1.79	1.90	1.80	1.56	1.29	1.30	1.48	1.57	1.38	1.27						
135	1.45	1.60	1.79	1.87	1.80	1.61	1.37	1.37	1.49	1.54	1.40	1.22						
140	1.51	1.63	1.79	1.85	1.80	1.63	1.43	1.43	1.50	1.53	1.41	1.28						
145	1.55	1.65	1.79	1.83	1.80	1.66	1.50	1.50	1.54	1.52	1.43	1.34						
150	1.61	1.68	1.79	1.83	1.80	1.70	1.57	1.56	1.56	1.53	1.47	1.41						
155	1.66	1.70	1.79	1.83	1.80	1.73	1.63	1.63	1.62	1.57	1.59	1.48						
160	1.71	1.73	1.79	1.83	1.80	1.76	1.70	1.69	1.70	1.64	1.66	1.55						
165	1.76	1.77	1.79	1.83	1.80	1.80	1.74	1.74	1.77	1.72	1.74	1.61						
170	1.79	1.81	1.79	1.83	1.81	1.83	1.80	1.79	1.82	1.79	1.80	1.77						
175	1.82	1.84	1.83	1.86	1.83	1.85	1.83	1.82	1.86	1.83	1.85	1.81						
180	1.84	1.84	1.85	1.86	1.85	1.85	1.83	1.84	1.86	1.86	1.86	1.84						

C Range: 0 - 360DEG
C Interval: 30.0DEG
Test Speed: HIGH
Temperature:25.3℃
Operators:
Test Date:2025-05-19

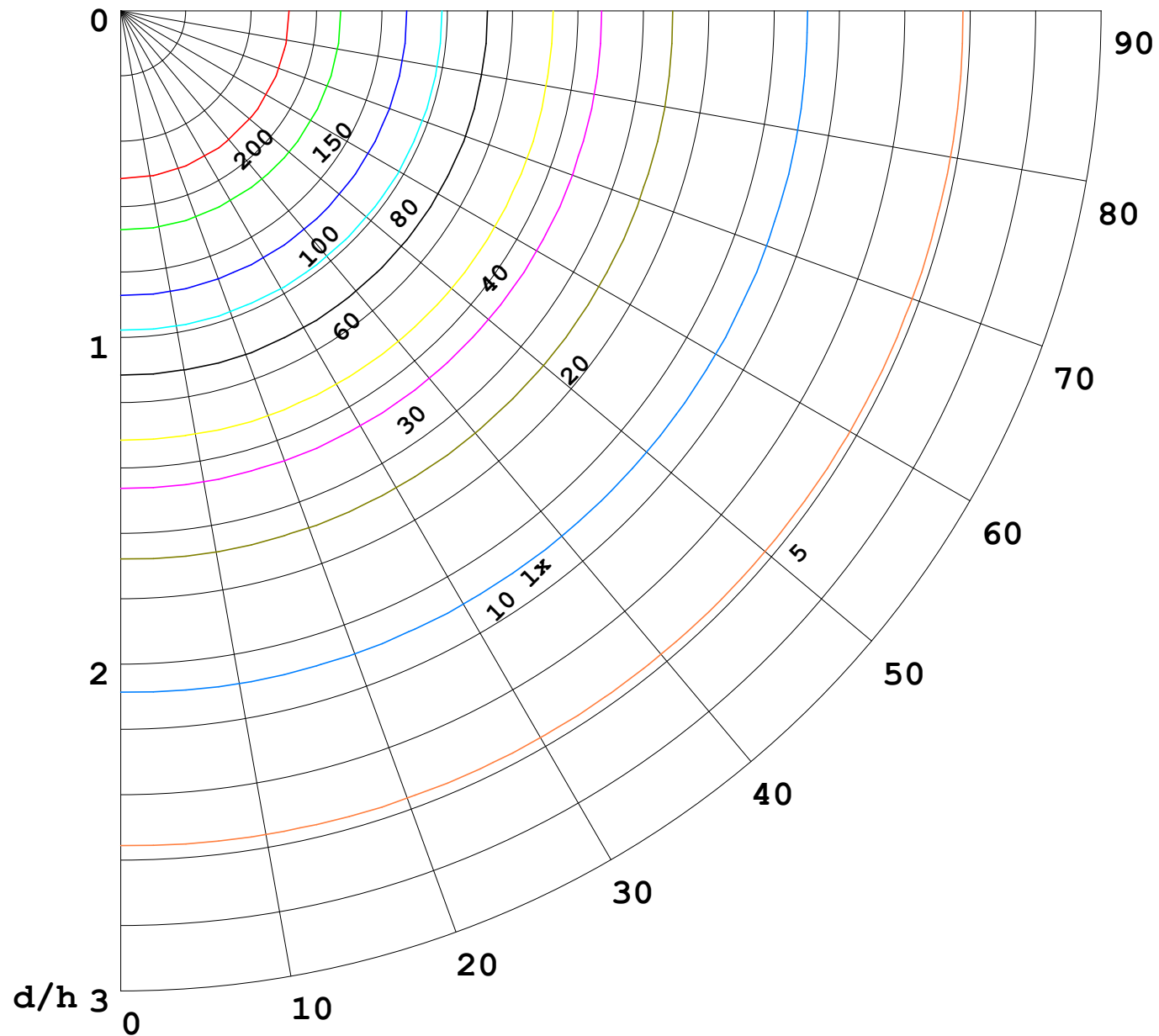
γ Range: 0 - 180DEG
γ Interval: 1.0DEG
Test System:EVERFINE GO-2000B_V1 SYSTEM V2.00.488
Humidity:65.0%
Test Distance:6.360m [K=1.0000]
Remarks:

I (cd)



1000 lm

$\kappa = 1$



F = 1000 lm
 K = 0.7
 Hcc = 0.8 m
 Hfc = 0.0 m
 Eave = 100 lx

	Pcc	Pw	Pfc
————	70	50	30
————	50	30	20

