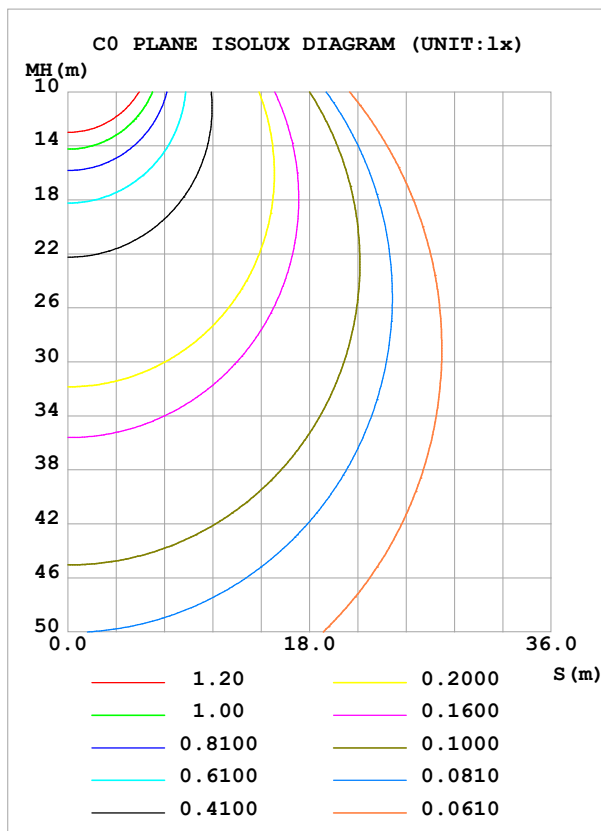
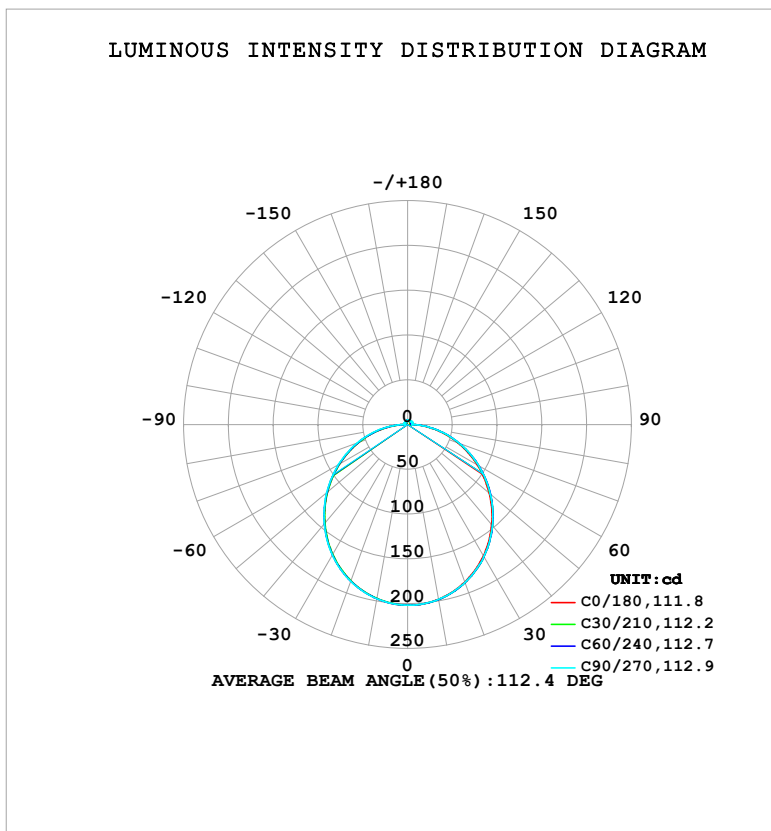


LUMINAIRE PHOTOMETRIC TEST REPORT

Test:U:24.00V I:0.5445A P:13.07W PF:1.000 Freq:0Hz Lamp Flux:615.505x1 lm		
NAME: SF28-24V-5050-72-5000K-80	TYPE:	WEIGHT:
SPEC.:	DIM.: Length=1m	SERIAL No.:
MFR.: OLympia lighting	SUR.:	Shielding Angle:

DATA OF LAMP			PHOTOMETRIC DATA			
			Eff: 47.10 lm/W			
MODEL	5050		Imax (cd)	201.7	S/MH (C0/180)	1.24
NOMINAL POWER (W)	13		LOR (%)	100.0	S/MH (C90/270)	1.24
RATED VOLTAGE (V)	24		TOTAL FLUX (lm)	615.51	η UP, DN (C0-180)	2.3, 48.3
NOMINAL FLUX (lm)	615.505		CIE CLASS	DIRECT	η UP, DN (C180-360)	1.8, 47.6
LAMPS INSIDE	1		η up (%)	4.1	CIBSE SHR NOM	1.25
TEST VOLTAGE (V)			η down (%)	95.9	CIBSE SHR MAX	1.35



C Range: 0 - 360DEG
C Interval: 30.0DEG
Test Speed: HIGH
Temperature: 25.3°C
Operators:
Test Date: 2025-05-19

```

γ Range: 0 - 180DEG
γ Interval: 1.0DEG
Test System:EVERFINE GO-2000B_V1 SYSTEM V2.00.488
Humidity:65.0%
Test Distance:6.360m [K=1.0000]
Remarks:

```

ZONAL FLUX DIAGRAM

ZONAL FLUX DIAGRAM:

γ	C0	C45	C90	C135	C180	C225	C270	C315	γ	Φ zone	Φ total	%lum, lamp
10	198.1	198.4	198.2	197.7	197.4	197.3	197.6	198.1	0- 10	19.07	19.07	3.1,3.1
20	187.0	187.8	187.6	186.5	185.7	185.7	186.2	187.0	10- 20	54.50	73.57	12,12
30	169.3	170.5	170.3	168.7	167.6	167.6	168.2	169.2	20- 30	82.30	155.9	25.3,25.3
40	146.1	147.6	147.5	145.5	144.1	144.2	144.9	146.1	30- 40	98.79	254.7	41.4,41.4
50	119.1	120.7	120.7	118.5	116.9	117.1	118.0	119.1	40- 50	102.3	357.0	58,58
60	89.70	91.48	91.55	89.32	87.74	87.96	89.12	89.94	50- 60	93.33	450.3	73.2,73.2
70	59.82	61.46	61.65	59.50	58.09	58.38	59.74	60.23	60- 70	74.00	524.3	85.2,85.2
80	30.55	31.88	32.09	30.14	28.98	29.36	30.83	31.05	70- 80	47.66	572.0	92.9,92.9
90	5.551	5.855	4.819	4.870	4.271	3.913	3.752	4.934	80- 90	18.15	590.1	95.9,95.9
100	2.694	4.106	5.189	4.140	2.471	2.959	4.006	2.882	90-100	3.938	594.1	96.5,96.5
110	3.093	4.392	5.417	4.444	2.836	3.274	4.235	3.158	100-110	3.908	598.0	97.2,97.2
120	3.463	4.577	5.446	4.628	3.194	3.470	4.287	3.305	110-120	3.915	601.9	97.8,97.8
130	3.779	4.682	5.368	4.737	3.533	3.660	4.012	3.470	120-130	3.668	605.6	98.4,98.4
140	4.083	4.747	5.232	4.821	3.880	3.917	3.902	3.586	130-140	3.251	608.8	98.9,98.9
150	4.379	4.802	5.134	4.886	4.242	4.250	4.101	3.912	140-150	2.735	611.6	99.4,99.4
160	4.660	4.878	5.085	4.964	4.580	4.610	4.474	4.361	150-160	2.117	613.7	99.7,99.7
170	4.895	4.944	5.041	4.995	4.881	4.907	4.882	4.827	160-170	1.362	615.0	99.9,99.9
180	5.005	5.035	5.064	5.018	5.013	5.035	5.056	5.012	170-180	0.4739	615.5	100,100
DEG	LUMINOUS INTENSITY:cd									UNIT:lm		

Conical surface Flux(90deg): 306.2 lm

%lum = 49.7%

%lamp = 49.7%

Conical surface Flux(130deg): 490.26 lm

%lum = 79.7%

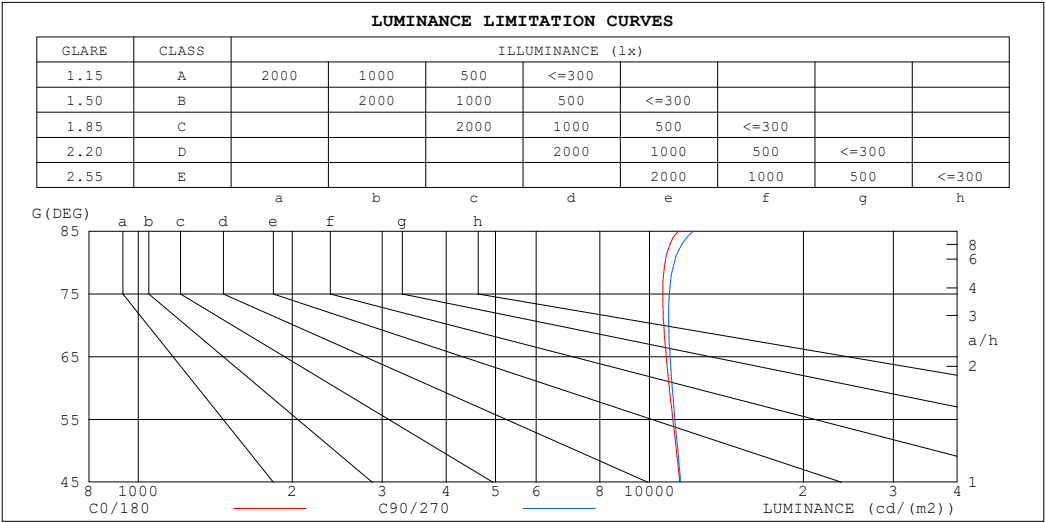
%lamp = 79.7%

C Range: 0 - 360DEG
 C Interval: 30.0DEG
 Test Speed: HIGH
 Temperature:25.3℃
 Operators:
 Test Date:2025-05-19

γ Range: 0 - 180DEG
 γ Interval: 1.0DEG
 Test System:EVERFINE GO-2000B_V1 SYSTEM V2.00.488
 Humidity:65.0%
 Test Distance:6.360m [K=1.0000]
 Remarks:

LUMINANCE LIMITATION CURVES

Test:U:24.00V I:0.5445A P:13.07W PF:1.000 Freq:0Hz Lamp Flux:615.505x1 lm		
NAME: SF28-24V-5050-72-5000K-80	TYPE:	WEIGHT:
SPEC.:	DIM.: Length=1m	SERIAL No.:
MFR.: OLympia lighting	SUR.:	Shielding Angle:



LUMINANCE cd/(m2)		
G (DEG)	C0/180	C90/270
85	11391	12181
80	10726	11184
75	10616	10939
70	10661	10907
65	10782	10972
60	10936	11080
55	11110	11213
50	11290	11362
45	11454	11507

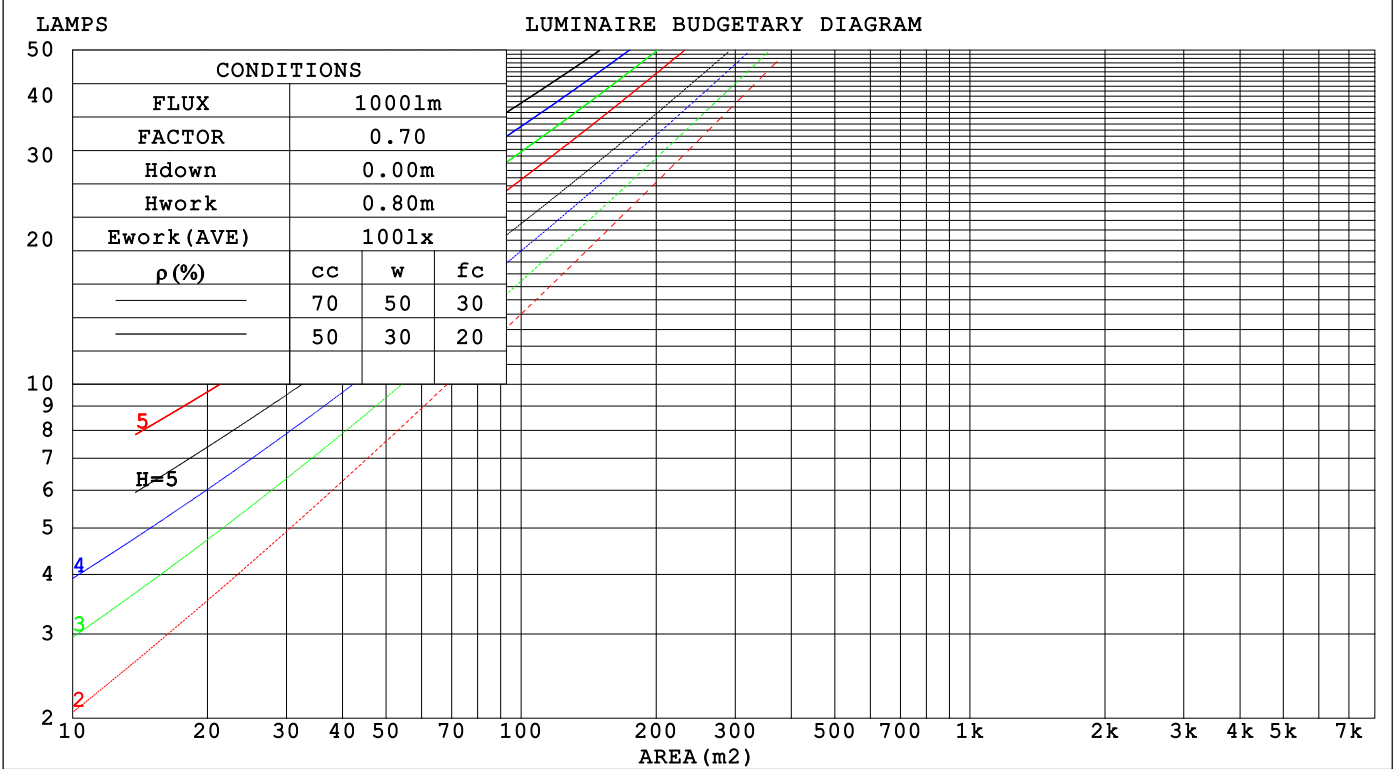
C Range: 0 - 360DEG
C Interval: 30.0DEG
Test Speed: HIGH
Temperature:25.3℃
Operators:
Test Date:2025-05-19

γ Range: 0 - 180DEG
γ Interval: 1.0DEG
Test System:EVERFINE GO-2000B_V1 SYSTEM V2.00.488
Humidity:65.0%
Test Distance:6.360m [K=1.0000]
Remarks:

CU AND LUMINAIRE BUDGETARY ESTIMATE DIAGRAM

Test:U:24.00V I:0.5445A P:13.07W PF:1.000 Freq:0Hz		
Lamp Flux:615.505x1 lm		
NAME: SF28-24V-5050-72-5000K-80	TYPE:	WEIGHT:
SPEC.:	DIM.: Length=1m	SERIAL No.:
MFR.: OLYMPIA lighting	SUR.:	Shielding Angle:

pcc	80%			70%			50%			30%			10%			0
p _w	50%	30%	10%	50%	30%	10%	50%	30%	10%	50%	30%	10%	50%	30%	10%	0
p _{fc}	20%			20%			20%			20%			20%			0
RCR	RCR:Room Cavity Ratio															



C Range: 0 - 360DEG
C Interval: 30.0DEG
Test Speed: HIGH
Temperature:25.3℃
Operators:
Test Date:2025-05-19

γ Range: 0 - 180DEG
γ Interval: 1.0DEG
Test System:EVERFINE GO-2000B_V1 SYSTEM V2.00.488
Humidity:65.0%
Test Distance:6.360m [K=1.0000]
Remarks:

WEC AND CCEC

Test:U:24.00V I:0.5445A P:13.07W PF:1.000 Freq:0Hz Lamp Flux:615.505x1 lm		
NAME: SF28-24V-5050-72-5000K-80	TYPE:	WEIGHT:
SPEC.:	DIM.: Length=1m	SERIAL No.:
MFR.: OLympia lighting	SUR.:	Shielding Angle:

pcc	80%			70%			50%			30%			10%			0														
pw	50%	30%	10%	50%	30%	10%	50%	30%	10%	50%	30%	10%	50%	30%	10%	0														
pfc	20%			20%			20%			20%			20%			0														
RCR	RCR:Room Cavity Ratio															Wall Exitance Coefficients(WEC)														
0.0																														
1.0	.325	.185	.059	.317	.181	.057	.301	.173	.055	.287	.165	.053	.273	.158	.051															
2.0	.300	.164	.050	.293	.161	.050	.279	.155	.048	.266	.149	.047	.254	.144	.045															
3.0	.275	.146	.044	.268	.144	.043	.256	.139	.042	.245	.134	.041	.234	.129	.040															
4.0	.252	.131	.039	.247	.129	.038	.235	.125	.037	.225	.121	.036	.216	.117	.036															
5.0	.232	.118	.034	.227	.117	.034	.217	.113	.033	.208	.110	.033	.199	.107	.032															
6.0	.215	.108	.031	.210	.106	.031	.201	.103	.030	.193	.100	.029	.185	.097	.029															
7.0	.200	.099	.028	.195	.097	.028	.187	.095	.027	.180	.092	.027	.173	.090	.026															
8.0	.186	.091	.026	.182	.090	.025	.175	.087	.025	.168	.085	.025	.162	.083	.024															
9.0	.174	.084	.024	.171	.083	.023	.164	.081	.023	.158	.079	.023	.152	.077	.022															
10.0	.164	.079	.022	.161	.078	.022	.155	.076	.021	.149	.074	.021	.144	.072	.021															

pcc	80%			70%			50%			30%			10%			0
pw	50%	30%	10%	50%	30%	10%	50%	30%	10%	50%	30%	10%	50%	30%	10%	0
pfc	20%			20%			20%			20%			20%			0
RCR	RCR:Room Cavity Ratio						Ceiling Cavity Exitance Coefficients (CCEC)									
0.0	.222	.222	.222	.190	.190	.190	.129	.129	.129	.074	.074	.074	.024	.024	.024	
1.0	.213	.188	.165	.182	.161	.142	.125	.111	.098	.072	.064	.057	.023	.021	.018	
2.0	.205	.164	.129	.176	.141	.111	.120	.098	.078	.069	.057	.046	.022	.018	.015	
3.0	.198	.146	.106	.169	.126	.092	.116	.088	.064	.067	.051	.038	.022	.017	.012	
4.0	.190	.133	.090	.163	.115	.078	.112	.080	.055	.065	.047	.033	.021	.015	.011	
5.0	.182	.123	.079	.157	.106	.069	.108	.074	.049	.062	.044	.029	.020	.014	.010	
6.0	.175	.115	.071	.151	.099	.062	.104	.070	.044	.060	.041	.026	.019	.013	.009	
7.0	.168	.108	.066	.145	.093	.057	.100	.066	.040	.058	.039	.024	.019	.013	.008	
8.0	.162	.102	.061	.139	.089	.053	.096	.062	.038	.056	.037	.023	.018	.012	.007	
9.0	.156	.097	.058	.134	.084	.050	.093	.059	.036	.054	.035	.021	.018	.011	.007	
10.0	.150	.093	.055	.129	.081	.048	.090	.057	.034	.052	.034	.020	.017	.011	.007	

C Range: 0 - 360DEG
C Interval: 30.0DEG
Test Speed: HIGH
Temperature:25.3℃
Operators:
Test Date:2025-05-19

γ Range: 0 - 180DEG
γ Interval: 1.0DEG
Test System:EVERFINE GO-2000B_V1 SYSTEM V2.00.488
Humidity:65.0%
Test Distance:6.360m [K=1.0000]
Remarks:

UGR(Unified Glare Rating) Table

Test:U:24.00V I:0.5445A P:13.07W PF:1.000 Freq:0Hz Lamp Flux:615.505x1 lm										
NAME: SF28-24V-5050-72-5000K-80					TYPE:			WEIGHT:		
SPEC.:					DIM.: Length=1m			SERIAL No.:		
MFR.: OLympia lighting					SUR.:			Shielding Angle:		
ceiling/cavity	0.7	0.7	0.5	0.5	0.3	0.7	0.7	0.5	0.5	0.3
walls	0.5	0.3	0.5	0.3	0.3	0.5	0.3	0.5	0.3	0.3
working plane	0.2	0.2	0.2	0.2	0.2	0.2	0.2	0.2	0.2	0.2
Room dimensions	Viewed crosswise					Viewed endwise				
x = 2H y = 2H	21.7	23.2	22.1	23.5	23.8	21.8	23.2	22.1	23.5	23.8
3H	23.4	24.8	23.8	25.1	25.4	23.5	24.8	23.8	25.1	25.5
4H	24.1	25.4	24.5	25.8	26.1	24.2	25.5	24.6	25.9	26.2
6H	24.8	26.0	25.2	26.3	26.7	24.9	26.1	25.3	26.5	26.8
8H	25.0	26.2	25.4	26.6	26.9	25.1	26.3	25.5	26.7	27.1
12H	25.2	26.4	25.6	26.7	27.1	25.4	26.5	25.8	26.9	27.3
4H 2H	22.4	23.7	22.8	24.0	24.4	22.4	23.7	22.8	24.0	24.4
3H	24.3	25.4	24.7	25.8	26.2	24.3	25.5	24.7	25.8	26.2
4H	25.1	26.2	25.6	26.6	27.0	25.2	26.3	25.7	26.7	27.1
6H	25.9	26.8	26.4	27.3	27.7	26.0	26.9	26.5	27.4	27.8
8H	26.2	27.1	26.7	27.5	28.0	26.4	27.2	26.8	27.7	28.1
12H	26.5	27.3	27.0	27.8	28.3	26.6	27.4	27.1	27.9	28.4
8H 4H	25.5	26.4	26.0	26.8	27.3	25.6	26.4	26.0	26.9	27.3
6H	26.5	27.2	27.0	27.7	28.2	26.6	27.3	27.1	27.8	28.3
8H	26.9	27.5	27.4	28.0	28.6	27.0	27.7	27.5	28.2	28.7
12H	27.3	27.8	27.8	28.4	28.9	27.4	28.0	28.0	28.5	29.1
12H 4H	25.5	26.3	26.0	26.8	27.3	25.6	26.4	26.1	26.8	27.3
6H	26.6	27.2	27.1	27.7	28.2	26.7	27.3	27.2	27.8	28.3
8H	27.1	27.6	27.6	28.1	28.7	27.2	27.7	27.7	28.2	28.8
Variations with the observer position at spacings(CIE Pub.117):										
S = 1.0H	+ 0.1 / - 0.2					+ 0.1 / - 0.2				
1.5H	+ 0.2 / - 0.3					+ 0.2 / - 0.3				
2.0H	+ 0.1 / - 0.3					+ 0.1 / - 0.3				

CIE Pub.117, 615.5 lm Total Lamp Luminous Flux Correct (8log(F/F0) = -1.7)
Area: 0.0165 m2

C Range: 0 - 360DEG
C Interval: 30.0DEG
Test Speed: HIGH
Temperature:25.3℃
Operators:
Test Date:2025-05-19

γ Range: 0 - 180DEG
γ Interval: 1.0DEG
Test System:EVERFINE GO-2000B_V1 SYSTEM V2.00.488
Humidity:65.0%
Test Distance:6.360m [K=1.0000]
Remarks:

UTILIZATION FACTORS TABLE

Test:U:24.00V I:0.5445A P:13.07W PF:1.000 Freq:0Hz Lamp Flux:615.505x1 lm		
NAME: SF28-24V-5050-72-5000K-80	TYPE:	WEIGHT:
SPEC.:	DIM.: Length=1m	SERIAL No.:
MFR.: OLympia lighting	SUR.:	Shielding Angle:

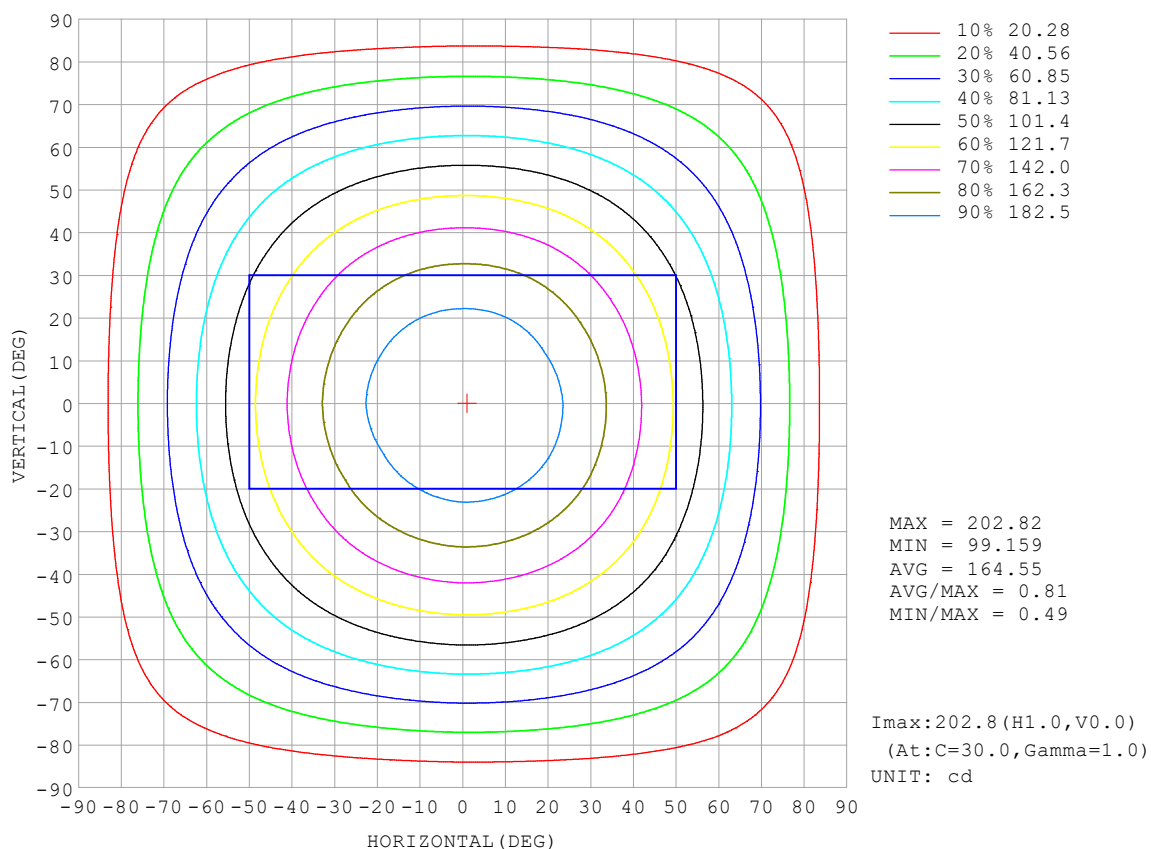
REFLECTANCE										
Ceiling	0.8	0.8	0.8	0.7	0.7	0.7	0.5	0.5	0.5	0
Walls	0.7	0.5	0.3	0.7	0.5	0.3	0.7	0.5	0.3	0
Working plane	0.2	0.2	0.2	0.2	0.2	0.2	0.2	0.2	0.2	0
ROOM INDEX	UTILIZATION FACTORS (PERCENT) $k(RI) \times RCR = 5$									
$k = 0.60$	56	44	37	55	44	37	53	43	36	30
0.80	65	54	46	64	53	46	62	52	45	38
1.00	74	62	55	72	62	54	70	63	54	46
1.25	81	70	62	79	69	62	76	67	61	53
1.50	86	75	68	84	74	67	80	72	66	58
2.00	93	84	77	91	82	76	86	79	74	65
2.50	97	88	82	94	87	81	90	84	79	69
3.00	100	93	87	98	91	86	93	87	83	73
4.00	104	98	93	102	96	92	97	92	88	78
5.00	107	102	97	104	99	95	99	95	92	81
ROOM INDEX	UF (total)									Direct
According to DIN EN 13032-2 2004			Suspended					SHRNOM = 1.25		

C Range: 0 - 360DEG
 C Interval: 30.0DEG
 Test Speed: HIGH
 Temperature: 25.3°C
 Operators:
 Test Date: 2025-05-19

γ Range: 0 - 180DEG
 γ Interval: 1.0DEG
 Test System: EVERFINE GO-2000B_V1 SYSTEM V2.00.488
 Humidity: 65.0%
 Test Distance: 6.360m [K=1.0000]
 Remarks:

ISOCANDELA DIAGRAM

Test:U:24.00V I:0.5445A P:13.07W PF:1.000 Freq:0Hz Lamp Flux:615.505x1 lm		
NAME: SF28-24V-5050-72-5000K-80	TYPE:	WEIGHT:
SPEC.:	DIM.: Length=1m	SERIAL No.:
MFR.: OLympia lighting	SUR.:	Shielding Angle:

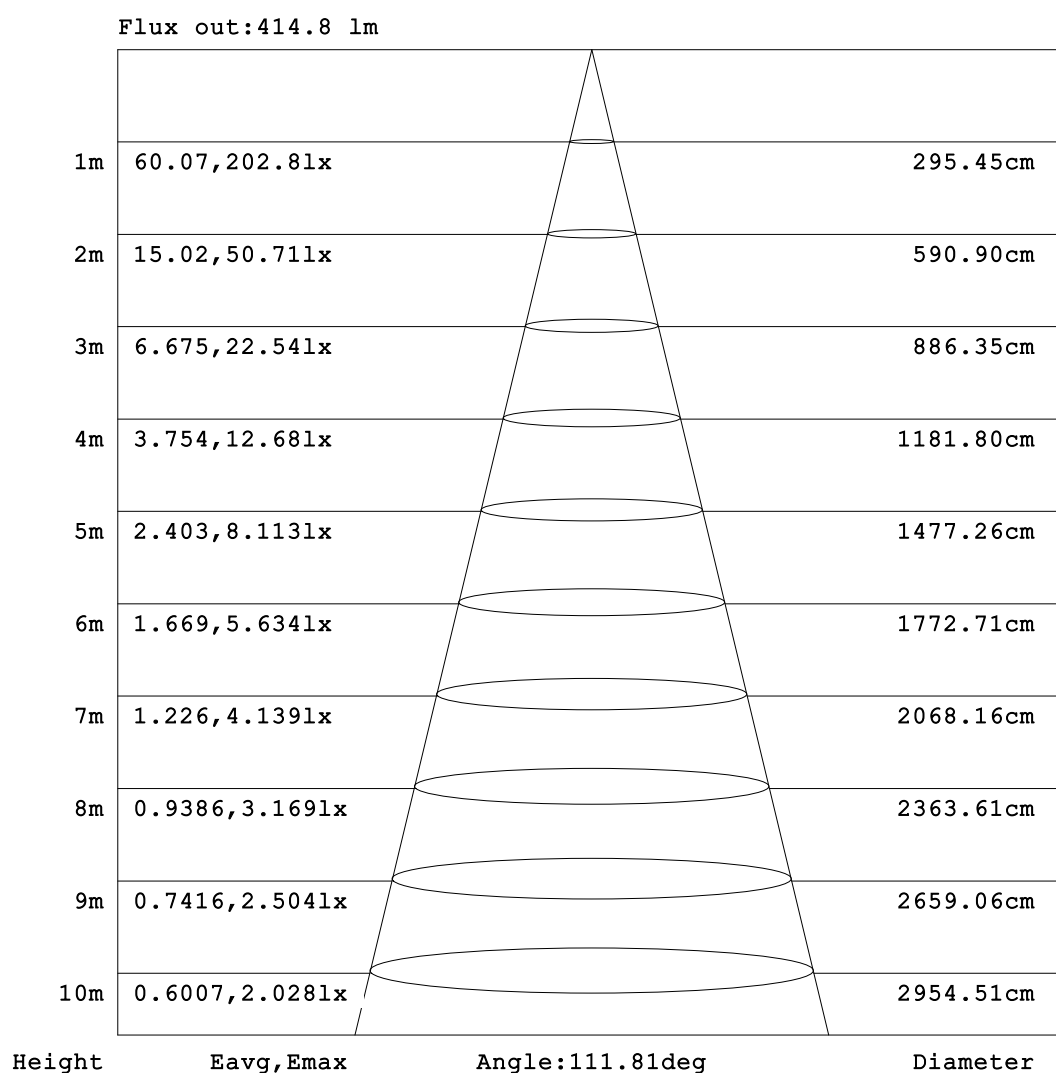


C Range: 0 - 360DEG
C Interval: 30.0DEG
Test Speed: HIGH
Temperature:25.3℃
Operators:
Test Date:2025-05-19

γ Range: 0 - 180DEG
γ Interval: 1.0DEG
Test System:EVERFINE GO-2000B_V1 SYSTEM V2.00.488
Humidity:65.0%
Test Distance:6.360m [K=1.0000]
Remarks:

AAI Figure

Test:U:24.00V I:0.5445A P:13.07W PF:1.000 Freq:0Hz Lamp Flux:615.505x1 lm		
NAME: SF28-24V-5050-72-5000K-80	TYPE:	WEIGHT:
SPEC.:	DIM.: Length=1m	SERIAL No.:
MFR.: OLympia lighting	SUR.:	Shielding Angle:



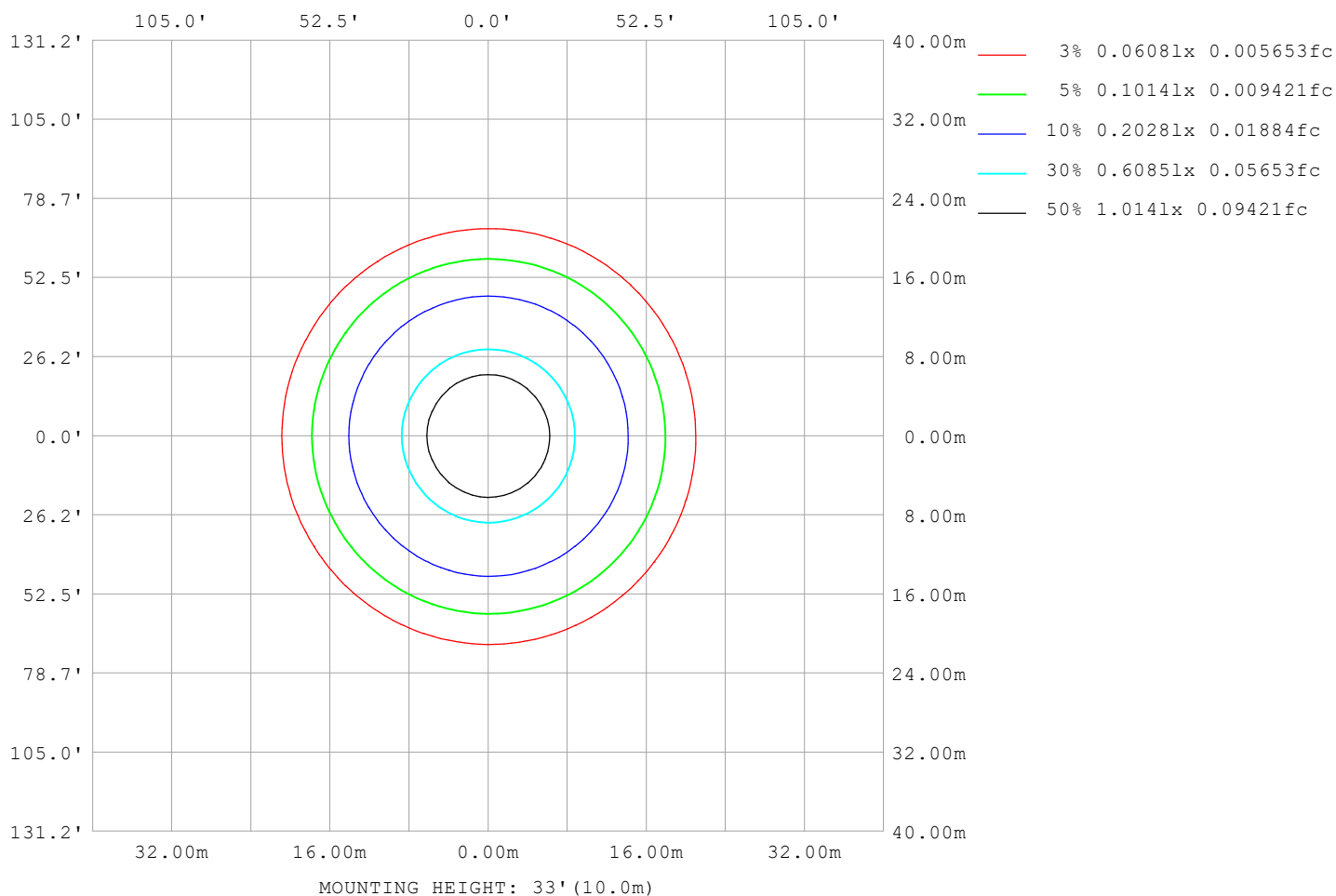
Note:The Curves indicate the illuminated area and the average illumination when the luminaire is at different distance.

C Range: 0 - 360DEG
C Interval: 30.0DEG
Test Speed: HIGH
Temperature:25.3℃
Operators:
Test Date:2025-05-19

γ Range: 0 - 180DEG
γ Interval: 1.0DEG
Test System:EVERFINE GO-2000B_V1 SYSTEM V2.00.488
Humidity:65.0%
Test Distance:6.360m [K=1.0000]
Remarks:

ISOLUX DIAGRAM

Test:U:24.00V I:0.5445A P:13.07W PF:1.000 Freq:0Hz Lamp Flux:615.505x1 lm		
NAME: SF28-24V-5050-72-5000K-80	TYPE:	WEIGHT:
SPEC.:	DIM.: Length=1m	SERIAL No.:
MFR.: OLympia lighting	SUR.:	Shielding Angle:



C Range: 0 - 360DEG
C Interval: 30.0DEG
Test Speed: HIGH
Temperature: 25.3°C
Operators:
Test Date: 2025-05-19

γ Range: 0 - 180DEG
γ Interval: 1.0DEG
Test System: EVERFINE GO-2000B_V1 SYSTEM V2.00.488
Humidity: 65.0%
Test Distance: 6.360m [K=1.0000]
Remarks:

LED Avg.L Report

Test:U:24.00V I:0.5445A P:13.07W PF:1.000 Freq:0Hz Lamp Flux:615.505x1 lm		
NAME: SF28-24V-5050-72-5000K-80	TYPE:	WEIGHT:
SPEC.:	DIM.: Length=1m	SERIAL No.:
MFR.: OLympia lighting	SUR.:	Shielding Angle:

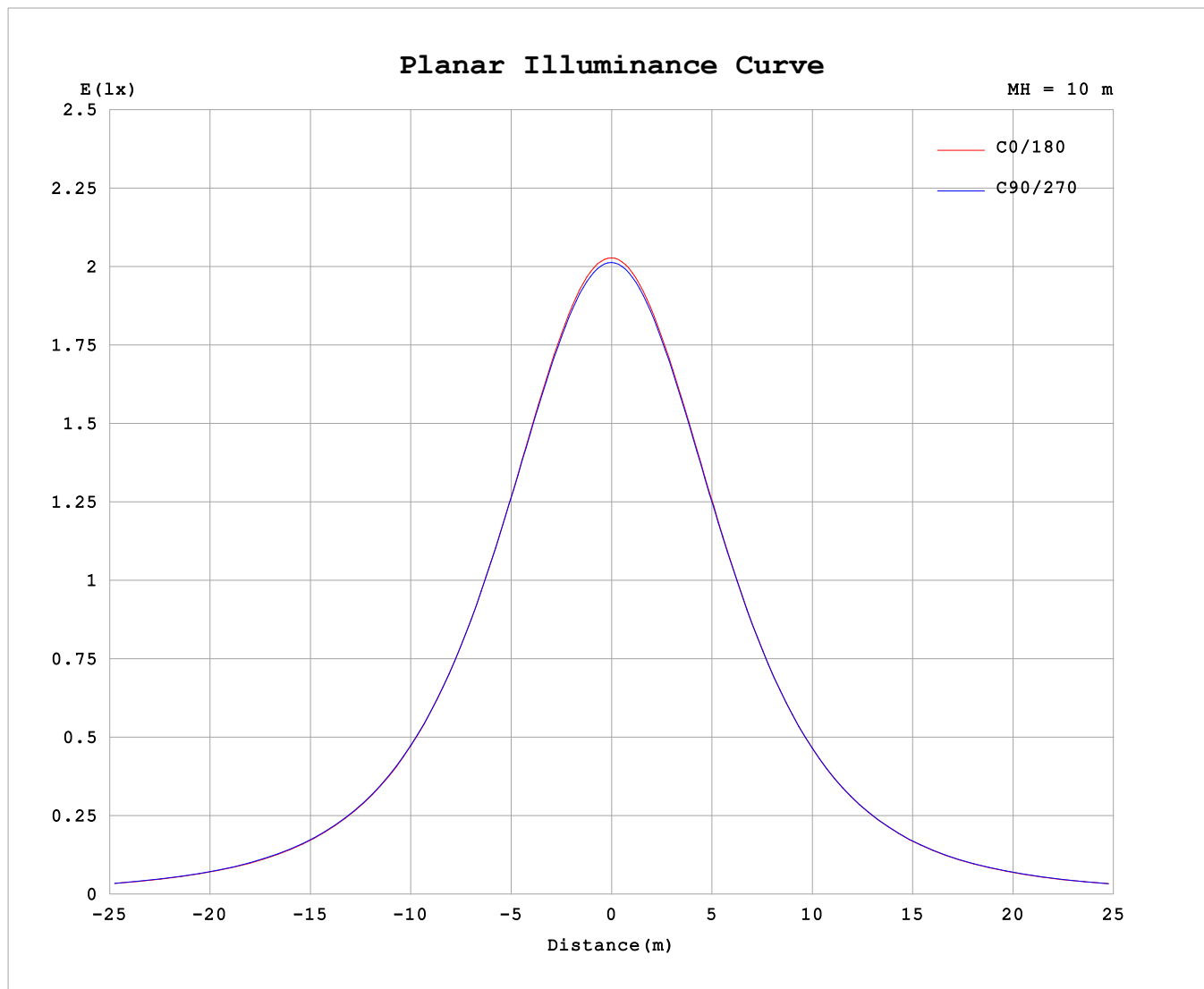
AvgL	cd/m2
L_0~180 (65) av	10588
L_0~180 (75) av	10362
L_0~180 (85) av	10838
L_90~270 (65) av	10830
L_90~270 (75) av	10769
L_90~270 (85) av	11847
L_45 (65) av	10728
L_45 (75) av	10573
L_45 (85) av	11303

Standard: GB/T 29293-2012

C Range: 0 - 360DEG
C Interval: 30.0DEG
Test Speed: HIGH
Temperature:25.3℃
Operators:
Test Date:2025-05-19

γ Range: 0 - 180DEG
γ Interval: 1.0DEG
Test System:EVERFINE GO-2000B_V1 SYSTEM V2.00.488
Humidity:65.0%
Test Distance:6.360m [K=1.0000]
Remarks:

Planar Illuminance Curve



C Range: 0 - 360DEG
C Interval: 30.0DEG
Test Speed: HIGH
Temperature: 25.3 °C
Operators:
Test Date: 2025-05-19

γ Range: 0 - 180DEG
 γ Interval: 1.0DEG
Test System: EVERFINE GO-2000B_V1 SYSTEM V2.00.488
Humidity: 65.0%
Test Distance: 6.360m [K=1.0000]
Remarks:

LUMINOUS DISTRIBUTION INTENSITY DATA

Test:U:24.00V I:0.5445A P:13.07W PF:1.000 Freq:0Hz Lamp Flux:615.505x1 lm																	
NAME: SF28-24V-5050-72-5000K-80									TYPE:						WEIGHT:		
SPEC.:									DIM.: Length=1m						SERIAL No.:		
MFR.: OLympia lighting									SUR.:						Shielding Angle:		

Table--1

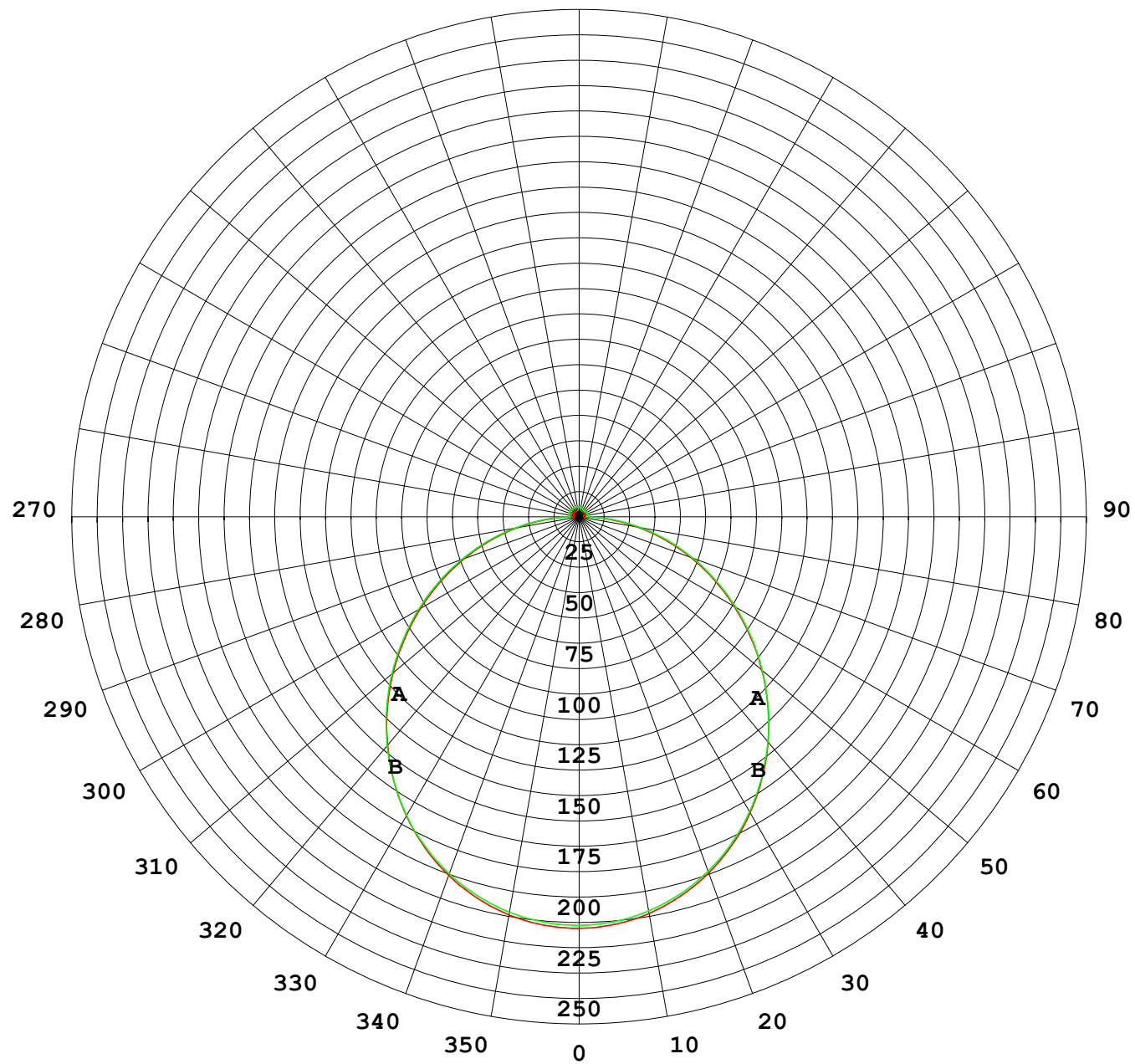
UNIT: cd

C (DEG) γ (DEG)	0	30	60	90	120	150	180	210	240	270	300	330						
0	202	202	202	202	202	202	202	202	202	202	202	202						
5	201	201	201	201	201	201	201	200	200	201	201	201						
10	198	198	198	198	198	198	197	197	197	198	198	198						
15	193	194	194	194	193	193	192	192	193	193	193	193						
20	187	188	188	188	187	186	186	186	186	186	187	187						
25	179	180	180	180	179	178	177	177	178	178	179	179						
30	169	170	171	170	169	168	168	167	168	168	169	169						
35	158	160	160	159	158	157	156	156	157	157	158	158						
40	146	147	148	147	146	145	144	144	145	145	146	146						
45	133	134	135	134	133	132	131	131	131	132	133	133						
50	119	121	121	121	119	118	117	117	117	118	119	119						
55	105	106	107	106	105	103	102	102	103	104	105	105						
60	89.7	91.2	91.8	91.6	90.1	88.6	87.7	87.5	88.4	89.1	90.0	89.9						
65	74.8	76.2	76.8	76.6	75.2	73.7	72.9	72.7	73.6	74.4	75.1	75.0						
70	59.8	61.2	61.8	61.6	60.2	58.8	58.1	57.9	58.8	59.7	60.3	60.2						
75	45.1	46.3	46.8	46.8	45.4	44.1	43.4	43.3	44.2	45.2	45.6	45.4						
80	30.6	31.7	32.1	32.1	30.8	29.5	29.0	28.9	29.9	30.8	31.2	30.9						
85	16.3	17.3	17.6	17.5	16.3	15.3	14.9	14.6	15.6	16.5	16.9	16.6						
90	5.55	6.04	5.67	4.82	5.00	4.74	4.27	3.89	3.93	3.75	4.65	5.22						
95	2.57	3.41	4.49	5.01	4.51	3.42	2.32	2.43	3.21	3.86	3.13	2.38						
100	2.69	3.57	4.64	5.19	4.69	3.59	2.47	2.56	3.36	4.01	3.28	2.48						
105	2.89	3.74	4.78	5.32	4.84	3.77	2.66	2.73	3.52	4.13	3.31	2.65						
110	3.09	3.89	4.89	5.42	4.96	3.93	2.84	2.90	3.65	4.23	3.51	2.81						
115	3.28	4.03	4.95	5.45	5.03	4.07	3.02	3.06	3.68	4.28	3.58	2.97						
120	3.46	4.15	5.00	5.45	5.07	4.19	3.19	3.23	3.71	4.29	3.48	3.13						
125	3.64	4.25	5.03	5.42	5.09	4.29	3.36	3.38	3.74	4.16	3.49	3.28						
130	3.78	4.33	5.03	5.37	5.09	4.38	3.53	3.55	3.77	4.01	3.51	3.43						
135	3.93	4.42	5.02	5.30	5.09	4.47	3.71	3.73	3.84	3.94	3.57	3.34						
140	4.08	4.49	5.00	5.23	5.08	4.56	3.88	3.90	3.93	3.90	3.66	3.51						
145	4.23	4.56	4.98	5.17	5.06	4.64	4.06	4.08	4.05	3.91	3.78	3.69						
150	4.38	4.63	4.98	5.13	5.06	4.71	4.24	4.27	4.23	4.10	3.96	3.87						
155	4.52	4.71	4.98	5.10	5.06	4.80	4.41	4.45	4.42	4.26	4.24	4.06						
160	4.66	4.78	4.98	5.08	5.06	4.87	4.58	4.61	4.61	4.47	4.48	4.24						
165	4.79	4.85	4.98	5.07	5.05	4.92	4.74	4.76	4.80	4.73	4.70	4.42						
170	4.90	4.91	4.98	5.04	5.03	4.96	4.88	4.88	4.93	4.88	4.86	4.79						
175	4.97	4.99	4.99	5.04	5.02	5.01	4.98	4.97	5.02	4.99	4.97	4.91						
180	5.00	5.02	5.05	5.06	5.03	5.01	5.01	5.02	5.05	5.06	5.04	4.98						

C Range: 0 - 360DEG
C Interval: 30.0DEG
Test Speed: HIGH
Temperature:25.3℃
Operators:
Test Date:2025-05-19

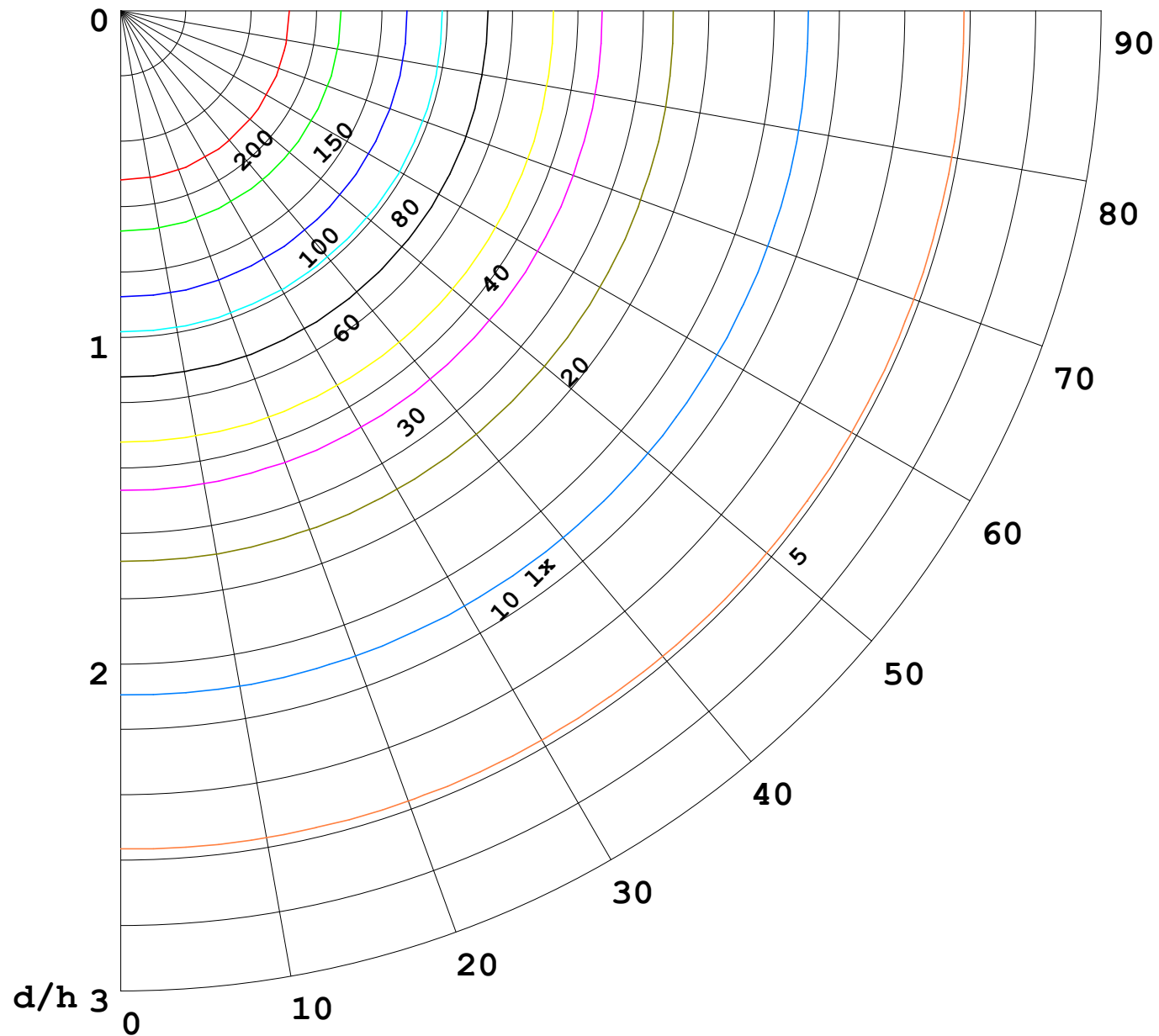
γ Range: 0 - 180DEG
γ Interval: 1.0DEG
Test System:EVERFINE GO-2000B_V1 SYSTEM V2.00.488
Humidity:65.0%
Test Distance:6.360m [K=1.0000]
Remarks:

I (cd)



1000 lm

$\kappa = 1$



F = 1000 lm
 K = 0.7
 Hcc = 0.8 m
 Hfc = 0.0 m
 Eave = 100 lx

	Pcc	Pw	Pfc
—————	70	50	30
—————	50	30	20

