

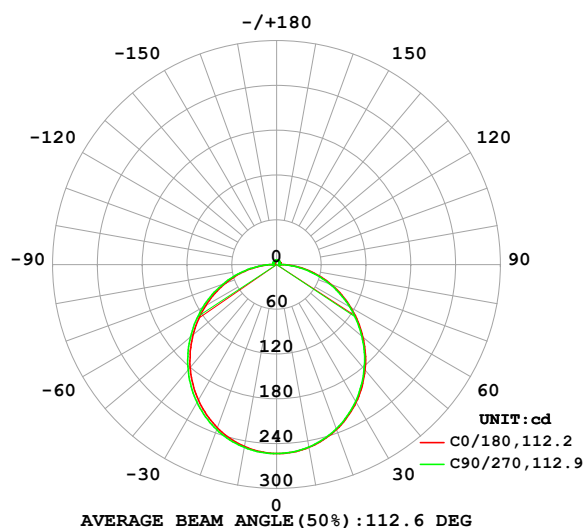
LUMINAIRE PHOTOMETRIC TEST REPORT

Test:U:24.10V I:0.6701A P:16.15W PF:1.000 Freq:0Hz
Lamp Flux:774.909x1 lm

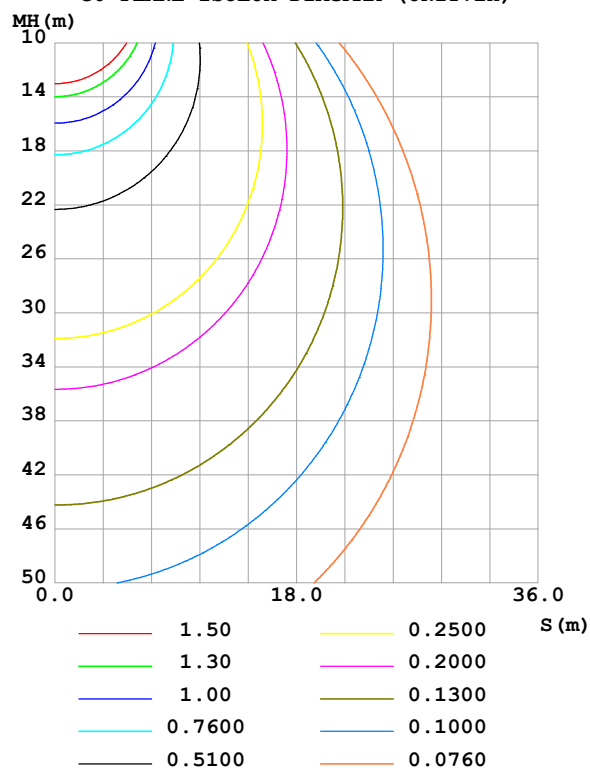
| | | |
|--------------------------------|-----------------|------------------|
| NAME: SF28-24V-5050-72-3000-80 | TYPE: | WEIGHT: |
| SPEC.: | DIM.: Length=1m | SERIAL No.: |
| MFR.: | SUR.: | Shielding Angle: |

| DATA OF LAMP | | PHOTOMETRIC DATA | | | | Eff: 47.98 lm/W |
|------------------|---------|------------------|--------|------------------------|----------|-----------------|
| MODEL | | Imax (cd) | 253.2 | S/MH(C0/180) | 1.24 | |
| NOMINAL POWER(W) | | LOR(%) | 100.0 | S/MH(C90/270) | 1.25 | |
| RATED VOLTAGE(V) | | TOTAL FLUX(lm) | 774.91 | η UP,DN(C0-180) | 2.0,47.9 | |
| NOMINAL FLUX(lm) | 774.909 | CIE CLASS | DIRECT | η UP,DN(C180-360) | 2.1,48.0 | |
| LAMPS INSIDE | 1 | η up (%) | 4.0 | CIBSE SHR NOM | 1.25 | |
| TEST VOLTAGE(V) | | η down (%) | 96.0 | CIBSE SHR MAX | 1.35 | |

LUMINOUS INTENSITY DISTRIBUTION DIAGRAM



C0 PLANE ISOLUX DIAGRAM (UNIT:lx)



C Range: 0 - 360DEG
C Interval: 22.5DEG
Test Speed: HIGH
Temperature:25.3℃
Operators:Cloud
Test Date:2025-01-15

γ Range: 0 - 180DEG
 γ Interval: 1.0DEG
Test System:EVERFINE GO-2000B_V1 SYSTEM V2.00.488
Humidity:65.0%
Test Distance:6.360m [K=1.0000]
Remarks:

ZONAL FLUX DIAGRAM

ZONAL FLUX DIAGRAM:

| γ | C0 | C45 | C90 | C135 | C180 | C225 | C270 | C315 | γ | Φ zone | Φ total | %lum, lamp |
|----------|-----------------------|-------|-------|-------|-------|-------|-------|-------|----------|-------------|--------------|------------|
| 10 | 248.8 | 248.8 | 248.2 | 247.6 | 247.6 | 248.1 | 248.9 | 249.3 | 0- 10 | 23.94 | 23.94 | 3.09,3.09 |
| 20 | 235.1 | 235.2 | 234.1 | 232.9 | 232.7 | 233.9 | 235.3 | 236.1 | 10- 20 | 68.43 | 92.36 | 11.9,11.9 |
| 30 | 213.2 | 213.2 | 211.7 | 210.1 | 209.7 | 211.4 | 213.3 | 214.4 | 20- 30 | 103.3 | 195.7 | 25.3,25.3 |
| 40 | 184.5 | 184.5 | 182.7 | 180.6 | 180.3 | 182.3 | 184.5 | 185.9 | 30- 40 | 124.1 | 319.8 | 41.3,41.3 |
| 50 | 151.0 | 151.0 | 149.1 | 146.6 | 146.2 | 148.3 | 150.7 | 152.3 | 40- 50 | 128.7 | 448.4 | 57.9,57.9 |
| 60 | 114.8 | 114.9 | 112.9 | 110.2 | 109.8 | 111.7 | 114.0 | 115.9 | 50- 60 | 117.5 | 566.0 | 73,73 |
| 70 | 77.71 | 77.74 | 75.69 | 73.14 | 72.80 | 74.34 | 76.46 | 78.49 | 60- 70 | 93.50 | 659.5 | 85.1,85.1 |
| 80 | 41.04 | 40.96 | 38.60 | 36.75 | 36.68 | 37.59 | 39.24 | 41.36 | 70- 80 | 60.54 | 720.0 | 92.9,92.9 |
| 90 | 9.425 | 8.087 | 3.810 | 6.050 | 7.005 | 6.821 | 5.095 | 8.453 | 80- 90 | 23.54 | 743.5 | 96,96 |
| 100 | 5.106 | 4.551 | 3.730 | 3.828 | 3.400 | 4.614 | 5.358 | 5.260 | 90-100 | 5.279 | 748.8 | 96.6,96.6 |
| 110 | 4.905 | 4.571 | 4.086 | 4.250 | 3.782 | 4.836 | 5.514 | 5.176 | 100-110 | 4.802 | 753.6 | 97.3,97.3 |
| 120 | 5.100 | 4.556 | 4.458 | 4.600 | 4.173 | 4.977 | 5.574 | 5.095 | 110-120 | 4.694 | 758.3 | 97.9,97.9 |
| 130 | 5.070 | 4.613 | 4.802 | 4.941 | 4.500 | 5.116 | 5.600 | 5.043 | 120-130 | 4.392 | 762.7 | 98.4,98.4 |
| 140 | 5.134 | 4.985 | 5.140 | 5.318 | 4.874 | 5.338 | 5.655 | 5.252 | 130-140 | 3.925 | 766.6 | 98.9,98.9 |
| 150 | 5.502 | 5.343 | 5.553 | 5.682 | 5.310 | 5.589 | 5.768 | 5.475 | 140-150 | 3.362 | 770.0 | 99.4,99.4 |
| 160 | 5.864 | 5.873 | 5.932 | 6.015 | 5.710 | 5.863 | 5.942 | 5.773 | 150-160 | 2.629 | 772.6 | 99.7,99.7 |
| 170 | 6.031 | 6.139 | 6.207 | 6.235 | 5.991 | 6.108 | 6.164 | 6.074 | 160-170 | 1.698 | 774.3 | 99.9,99.9 |
| 180 | 6.192 | 6.284 | 6.331 | 6.322 | 6.201 | 6.289 | 6.337 | 6.331 | 170-180 | 0.5922 | 774.9 | 100,100 |
| DEG | LUMINOUS INTENSITY:cd | | | | | | | | | UNIT:lm | | |

Conical surface Flux(90deg): 384.56 lm

%lum = 49.6%

%lamp = 49.6%

Conical surface Flux(130deg): 616.37 lm

%lum = 79.5%

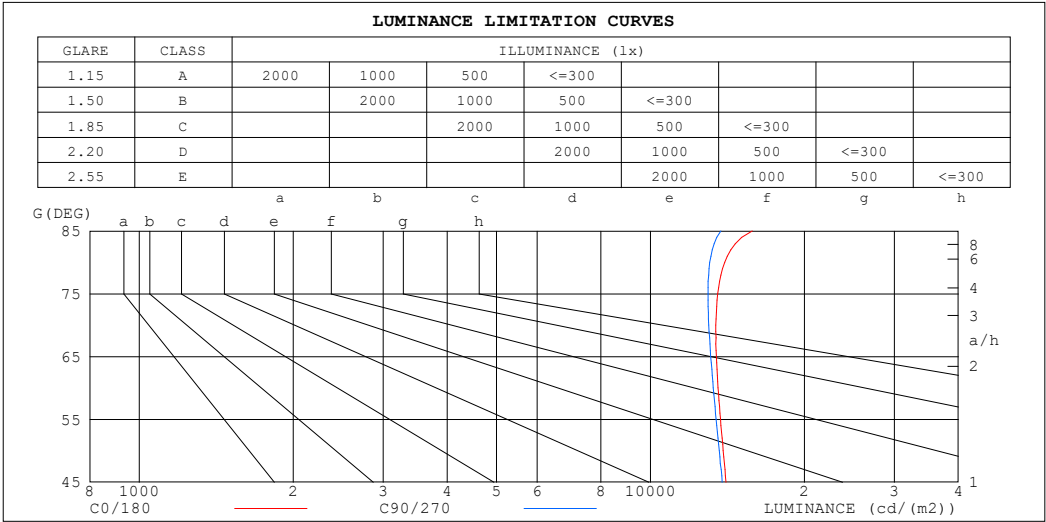
%lamp = 79.5%

C Range: 0 - 360DEG
 C Interval: 22.5DEG
 Test Speed: HIGH
 Temperature:25.3℃
 Operators:Cloud
 Test Date:2025-01-15

γ Range: 0 - 180DEG
 γ Interval: 1.0DEG
 Test System:EVERFINE GO-2000B_V1 SYSTEM V2.00.488
 Humidity:65.0%
 Test Distance:6.360m [K=1.0000]
 Remarks:

LUMINANCE LIMITATION CURVES

| | | |
|--|-----------------|------------------|
| Test:U:24.10V I:0.6701A P:16.15W PF:1.000 Freq:0Hz Lamp Flux:774.909x1 lm | | |
| NAME: SF28-24V-5050-72-3000-80 | TYPE: | WEIGHT: |
| SPEC.: | DIM.: Length=1m | SERIAL No.: |
| MFR.: | SUR.: | Shielding Angle: |



| LUMINANCE cd/(m2) | | |
|-------------------|--------|---------|
| G (DEG) | C0/180 | C90/270 |
| 85 | 15826 | 13732 |
| 80 | 13963 | 13061 |
| 75 | 13530 | 12953 |
| 70 | 13424 | 13002 |
| 65 | 13454 | 13121 |
| 60 | 13562 | 13269 |
| 55 | 13707 | 13433 |
| 50 | 13878 | 13625 |
| 45 | 14054 | 13816 |

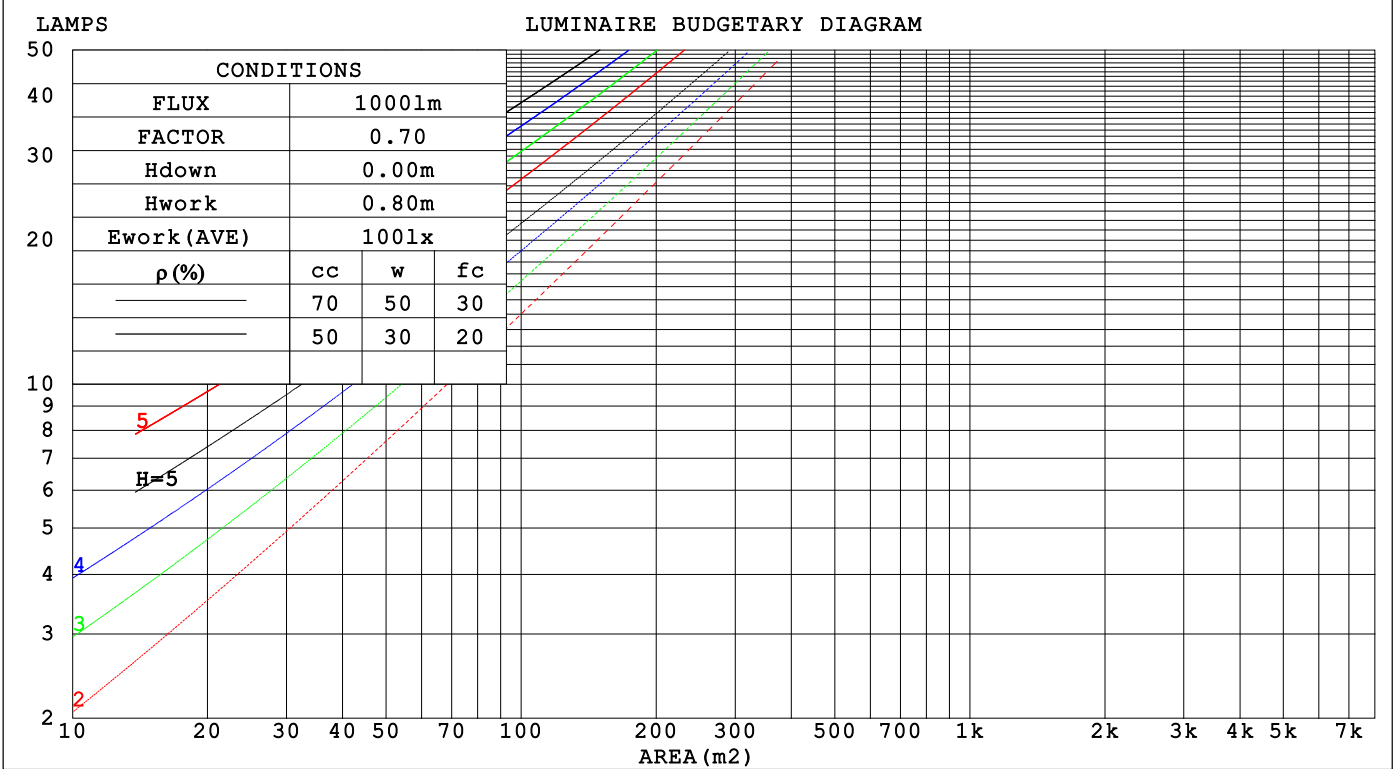
C Range: 0 - 360DEG
C Interval: 22.5DEG
Test Speed: HIGH
Temperature:25.3℃
Operators:Cloud
Test Date:2025-01-15

γ Range: 0 - 180DEG
γ Interval: 1.0DEG
Test System:EVERFINE GO-2000B_V1 SYSTEM V2.00.488
Humidity:65.0%
Test Distance:6.360m [K=1.0000]
Remarks:

CU AND LUMINAIRE BUDGETARY ESTIMATE DIAGRAM

| | | |
|--|-----------------|------------------|
| Test:U:24.10V I:0.6701A P:16.15W PF:1.000 Freq:0Hz Lamp Flux:774.909x1 lm | | |
| NAME: SF28-24V-5050-72-3000-80 | TYPE: | WEIGHT: |
| SPEC.: | DIM.: Length=1m | SERIAL No.: |
| MFR.: | SUR.: | Shielding Angle: |

| | | | | | | | | | | | | | | | | |
|-----------------|-----------------------|-----|-----|-----|-----|-----|-----|-----|-----|-----|-----|-----|-----|-----|-----|---|
| pcc | 80% | | | 70% | | | 50% | | | 30% | | | 10% | | | 0 |
| p _w | 50% | 30% | 10% | 50% | 30% | 10% | 50% | 30% | 10% | 50% | 30% | 10% | 50% | 30% | 10% | 0 |
| p _{fc} | 20% | | | 20% | | | 20% | | | 20% | | | 20% | | | 0 |
| RCR | RCR:Room Cavity Ratio | | | | | | | | | | | | | | | |



C Range: 0 - 360DEG
C Interval: 22.5DEG
Test Speed: HIGH
Temperature:25.3℃
Operators:Cloud
Test Date:2025-01-15

γ Range: 0 - 180DEG
γ Interval: 1.0DEG
Test System:EVERFINE GO-2000B_V1 SYSTEM V2.00.488
Humidity:65.0%
Test Distance:6.360m [K=1.0000]
Remarks:

WEC AND CCEC

| | | |
|--|-----------------|------------------|
| Test:U:24.10V I:0.6701A P:16.15W PF:1.000 Freq:0Hz Lamp Flux:774.909x1 lm | | |
| NAME: SF28-24V-5050-72-3000-80 | TYPE: | WEIGHT: |
| SPEC.: | DIM.: Length=1m | SERIAL No.: |
| MFR.: | SUR.: | Shielding Angle: |

| pcc | 80% | | | 70% | | | 50% | | | 30% | | | 10% | | | 0 | | | | | | | | | | | | | | |
|------|-----------------------|------|------|------|------|------|------|------|------|------|------|------|------|------|------|---------------------------------|--|--|--|--|--|--|--|--|--|--|--|--|--|--|
| pw | 50% | 30% | 10% | 50% | 30% | 10% | 50% | 30% | 10% | 50% | 30% | 10% | 50% | 30% | 10% | 0 | | | | | | | | | | | | | | |
| pfc | 20% | | | 20% | | | 20% | | | 20% | | | 20% | | | 0 | | | | | | | | | | | | | | |
| RCR | RCR:Room Cavity Ratio | | | | | | | | | | | | | | | Wall Exitance Coefficients(WEC) | | | | | | | | | | | | | | |
| 0.0 | | | | | | | | | | | | | | | | | | | | | | | | | | | | | | |
| 1.0 | .326 | .186 | .059 | .318 | .181 | .058 | .302 | .173 | .055 | .288 | .166 | .053 | .275 | .159 | .051 | | | | | | | | | | | | | | | |
| 2.0 | .301 | .165 | .051 | .294 | .162 | .050 | .280 | .155 | .048 | .267 | .150 | .047 | .255 | .144 | .045 | | | | | | | | | | | | | | | |
| 3.0 | .276 | .147 | .044 | .269 | .144 | .043 | .257 | .139 | .042 | .245 | .134 | .041 | .235 | .130 | .040 | | | | | | | | | | | | | | | |
| 4.0 | .253 | .131 | .039 | .247 | .129 | .038 | .236 | .125 | .037 | .226 | .121 | .037 | .216 | .117 | .036 | | | | | | | | | | | | | | | |
| 5.0 | .233 | .119 | .034 | .228 | .117 | .034 | .218 | .113 | .033 | .208 | .110 | .033 | .200 | .107 | .032 | | | | | | | | | | | | | | | |
| 6.0 | .215 | .108 | .031 | .211 | .106 | .031 | .202 | .103 | .030 | .193 | .100 | .030 | .186 | .098 | .029 | | | | | | | | | | | | | | | |
| 7.0 | .200 | .099 | .028 | .196 | .097 | .028 | .188 | .095 | .027 | .180 | .092 | .027 | .173 | .090 | .026 | | | | | | | | | | | | | | | |
| 8.0 | .186 | .091 | .026 | .183 | .090 | .025 | .175 | .088 | .025 | .169 | .085 | .025 | .162 | .083 | .024 | | | | | | | | | | | | | | | |
| 9.0 | .174 | .084 | .024 | .171 | .083 | .023 | .164 | .081 | .023 | .158 | .079 | .023 | .152 | .077 | .022 | | | | | | | | | | | | | | | |
| 10.0 | .164 | .079 | .022 | .161 | .078 | .022 | .155 | .076 | .021 | .149 | .074 | .021 | .144 | .072 | .021 | | | | | | | | | | | | | | | |

| pcc | 80% | | | 70% | | | 50% | | | 30% | | | 10% | | | 0 |
|------|-----------------------|------|------|------|------|------|---|------|------|------|------|------|------|------|------|---|
| pw | 50% | 30% | 10% | 50% | 30% | 10% | 50% | 30% | 10% | 50% | 30% | 10% | 50% | 30% | 10% | 0 |
| pfc | 20% | | | 20% | | | 20% | | | 20% | | | 20% | | | 0 |
| RCR | RCR:Room Cavity Ratio | | | | | | Ceiling Cavity Exitance Coefficients (CCEC) | | | | | | | | | |
| 0.0 | .221 | .221 | .221 | .189 | .189 | .189 | .129 | .129 | .129 | .074 | .074 | .074 | .024 | .024 | .024 | |
| 1.0 | .213 | .187 | .164 | .182 | .161 | .141 | .124 | .110 | .098 | .072 | .064 | .057 | .023 | .021 | .018 | |
| 2.0 | .205 | .163 | .128 | .175 | .140 | .111 | .120 | .097 | .077 | .069 | .057 | .045 | .022 | .018 | .015 | |
| 3.0 | .197 | .146 | .105 | .169 | .126 | .091 | .116 | .087 | .064 | .067 | .051 | .038 | .022 | .017 | .012 | |
| 4.0 | .189 | .133 | .089 | .163 | .115 | .078 | .112 | .080 | .055 | .065 | .047 | .032 | .021 | .015 | .011 | |
| 5.0 | .182 | .122 | .079 | .156 | .106 | .068 | .108 | .074 | .048 | .062 | .043 | .029 | .020 | .014 | .009 | |
| 6.0 | .175 | .114 | .071 | .150 | .099 | .062 | .104 | .069 | .044 | .060 | .041 | .026 | .019 | .013 | .009 | |
| 7.0 | .168 | .107 | .065 | .144 | .093 | .057 | .100 | .065 | .040 | .058 | .038 | .024 | .019 | .013 | .008 | |
| 8.0 | .161 | .102 | .061 | .139 | .088 | .053 | .096 | .062 | .037 | .056 | .036 | .022 | .018 | .012 | .007 | |
| 9.0 | .155 | .097 | .057 | .134 | .084 | .050 | .093 | .059 | .035 | .054 | .035 | .021 | .017 | .011 | .007 | |
| 10.0 | .149 | .092 | .054 | .129 | .080 | .048 | .089 | .056 | .034 | .052 | .033 | .020 | .017 | .011 | .007 | |

C Range: 0 - 360DEG
C Interval: 22.5DEG
Test Speed: HIGH
Temperature:25.3℃
Operators:Cloud
Test Date:2025-01-15

γ Range: 0 - 180DEG
γ Interval: 1.0DEG
Test System:EVERFINE GO-2000B_V1 SYSTEM V2.00.488
Humidity:65.0%
Test Distance:6.360m [K=1.0000]
Remarks:

UGR(Unified Glare Rating) Table

| | | | | | | | | | | |
|--|------------------|------|------|------|-----------------|----------------|------|------------------|------|------|
| Test:U:24.10V I:0.6701A P:16.15W PF:1.000 Freq:0Hz Lamp Flux:774.909x1 lm | | | | | | | | | | |
| NAME: SF28-24V-5050-72-3000-80 | | | | | TYPE: | | | WEIGHT: | | |
| SPEC.: | | | | | DIM.: Length=1m | | | SERIAL No.: | | |
| MFR.: | | | | | SUR.: | | | Shielding Angle: | | |
| ceiling/cavity | 0.7 | 0.7 | 0.5 | 0.5 | 0.3 | 0.7 | 0.7 | 0.5 | 0.5 | 0.3 |
| walls | 0.5 | 0.3 | 0.5 | 0.3 | 0.3 | 0.5 | 0.3 | 0.5 | 0.3 | 0.3 |
| working plane | 0.2 | 0.2 | 0.2 | 0.2 | 0.2 | 0.2 | 0.2 | 0.2 | 0.2 | 0.2 |
| Room dimensions | Viewed crosswise | | | | | Viewed endwise | | | | |
| x = 2H y = 2H | 22.7 | 24.1 | 23.0 | 24.4 | 24.7 | 22.6 | 24.1 | 22.9 | 24.3 | 24.6 |
| 3H | 24.4 | 25.8 | 24.7 | 26.1 | 26.4 | 24.3 | 25.6 | 24.6 | 26.0 | 26.3 |
| 4H | 25.2 | 26.5 | 25.5 | 26.8 | 27.1 | 25.0 | 26.3 | 25.4 | 26.7 | 27.0 |
| 6H | 25.8 | 27.1 | 26.2 | 27.4 | 27.8 | 25.7 | 26.9 | 26.0 | 27.2 | 27.6 |
| 8H | 26.1 | 27.3 | 26.5 | 27.7 | 28.0 | 25.9 | 27.1 | 26.3 | 27.4 | 27.8 |
| 12H | 26.3 | 27.5 | 26.8 | 27.9 | 28.2 | 26.1 | 27.2 | 26.5 | 27.6 | 28.0 |
| 4H 2H | 23.3 | 24.6 | 23.7 | 24.9 | 25.3 | 23.2 | 24.5 | 23.6 | 24.9 | 25.2 |
| 3H | 25.2 | 26.4 | 25.6 | 26.7 | 27.1 | 25.1 | 26.3 | 25.5 | 26.6 | 27.0 |
| 4H | 26.2 | 27.2 | 26.6 | 27.6 | 28.0 | 26.0 | 27.1 | 26.5 | 27.5 | 27.9 |
| 6H | 27.0 | 27.9 | 27.4 | 28.3 | 28.8 | 26.8 | 27.7 | 27.3 | 28.2 | 28.6 |
| 8H | 27.3 | 28.2 | 27.8 | 28.6 | 29.1 | 27.1 | 28.0 | 27.6 | 28.4 | 28.9 |
| 12H | 27.6 | 28.4 | 28.1 | 28.9 | 29.4 | 27.4 | 28.2 | 27.9 | 28.7 | 29.2 |
| 8H 4H | 26.5 | 27.4 | 27.0 | 27.8 | 28.3 | 26.4 | 27.3 | 26.9 | 27.7 | 28.2 |
| 6H | 27.5 | 28.3 | 28.0 | 28.7 | 29.2 | 27.4 | 28.1 | 27.9 | 28.6 | 29.1 |
| 8H | 28.0 | 28.6 | 28.5 | 29.1 | 29.7 | 27.8 | 28.5 | 28.3 | 29.0 | 29.5 |
| 12H | 28.4 | 29.0 | 29.0 | 29.5 | 30.1 | 28.2 | 28.8 | 28.7 | 29.3 | 29.8 |
| 12H 4H | 26.5 | 27.3 | 27.0 | 27.8 | 28.3 | 26.4 | 27.2 | 26.9 | 27.7 | 28.2 |
| 6H | 27.6 | 28.3 | 28.2 | 28.8 | 29.3 | 27.5 | 28.1 | 28.0 | 28.6 | 29.2 |
| 8H | 28.2 | 28.7 | 28.7 | 29.2 | 29.8 | 28.0 | 28.6 | 28.5 | 29.1 | 29.6 |
| Variations with the observer position at spacings(CIE Pub.117): | | | | | | | | | | |
| S = 1.0H | + 0.1 / - 0.2 | | | | | + 0.1 / - 0.2 | | | | |
| 1.5H | + 0.2 / - 0.3 | | | | | + 0.2 / - 0.3 | | | | |
| 2.0H | + 0.1 / - 0.3 | | | | | + 0.1 / - 0.3 | | | | |

CIE Pub.117, 774.9 lm Total Lamp Luminous Flux Correct (8log(F/F0) = -0.9)
Area: 0.017 m2

C Range: 0 - 360DEG
C Interval: 22.5DEG
Test Speed: HIGH
Temperature:25.3℃
Operators:Cloud
Test Date:2025-01-15

γ Range: 0 - 180DEG
γ Interval: 1.0DEG
Test System:EVERFINE GO-2000B_V1 SYSTEM V2.00.488
Humidity:65.0%
Test Distance:6.360m [K=1.0000]
Remarks:

UTILIZATION FACTORS TABLE

| | | |
|--|-----------------|------------------|
| Test:U:24.10V I:0.6701A P:16.15W PF:1.000 Freq:0Hz Lamp Flux:774.909x1 lm | | |
| NAME: SF28-24V-5050-72-3000-80 | TYPE: | WEIGHT: |
| SPEC.: | DIM.: Length=1m | SERIAL No.: |
| MFR.: | SUR.: | Shielding Angle: |

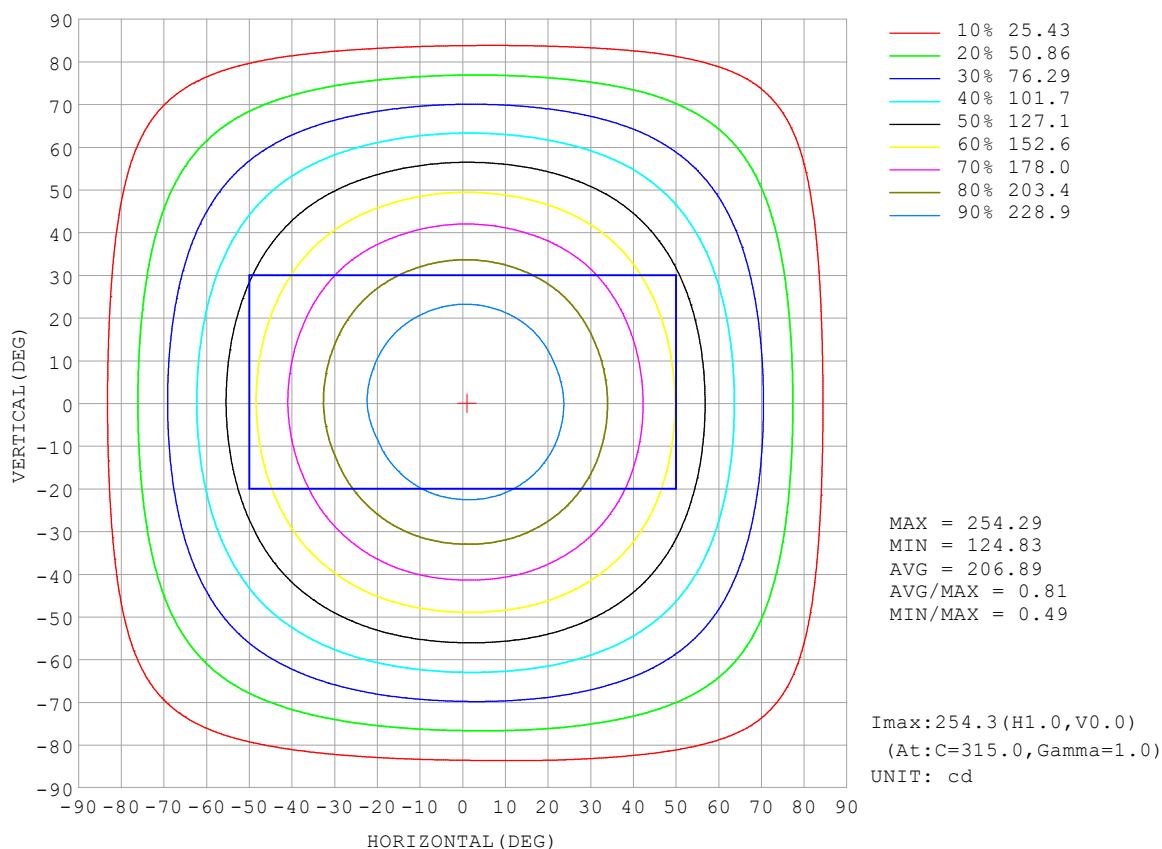
| REFLECTANCE | | | | | | | | | | |
|----------------------------------|--|-----|-----------|-----|-----|-----|-----|---------------|-----|--------|
| Ceiling | 0.8 | 0.8 | 0.8 | 0.7 | 0.7 | 0.7 | 0.5 | 0.5 | 0.5 | 0 |
| Walls | 0.7 | 0.5 | 0.3 | 0.7 | 0.5 | 0.3 | 0.7 | 0.5 | 0.3 | 0 |
| Working plane | 0.2 | 0.2 | 0.2 | 0.2 | 0.2 | 0.2 | 0.2 | 0.2 | 0.2 | 0 |
| ROOM INDEX | UTILIZATION FACTORS (PERCENT) $k(RI) \times RCR = 5$ | | | | | | | | | |
| $k = 0.60$ | 56 | 44 | 37 | 55 | 44 | 37 | 53 | 43 | 36 | 30 |
| 0.80 | 65 | 54 | 46 | 64 | 53 | 46 | 62 | 52 | 45 | 38 |
| 1.00 | 74 | 62 | 55 | 72 | 61 | 54 | 70 | 63 | 54 | 46 |
| 1.25 | 81 | 70 | 62 | 79 | 69 | 62 | 76 | 67 | 61 | 53 |
| 1.50 | 86 | 75 | 68 | 84 | 74 | 67 | 80 | 72 | 66 | 58 |
| 2.00 | 93 | 84 | 77 | 90 | 82 | 76 | 86 | 79 | 74 | 65 |
| 2.50 | 97 | 88 | 82 | 94 | 87 | 81 | 90 | 84 | 79 | 69 |
| 3.00 | 100 | 93 | 87 | 98 | 91 | 86 | 93 | 87 | 83 | 73 |
| 4.00 | 104 | 98 | 93 | 101 | 96 | 91 | 97 | 92 | 88 | 78 |
| 5.00 | 107 | 102 | 97 | 104 | 99 | 95 | 99 | 95 | 92 | 81 |
| ROOM INDEX | UF (total) | | | | | | | | | Direct |
| According to DIN EN 13032-2 2004 | | | Suspended | | | | | SHRNOM = 1.25 | | |

C Range: 0 - 360DEG
 C Interval: 22.5DEG
 Test Speed: HIGH
 Temperature: 25.3°C
 Operators: Cloud
 Test Date: 2025-01-15

γ Range: 0 - 180DEG
 γ Interval: 1.0DEG
 Test System: EVERFINE GO-2000B_V1 SYSTEM V2.00.488
 Humidity: 65.0%
 Test Distance: 6.360m [K=1.0000]
 Remarks:

ISOCANDELA DIAGRAM

| | | |
|--|-----------------|------------------|
| Test:U:24.10V I:0.6701A P:16.15W PF:1.000 Freq:0Hz Lamp Flux:774.909x1 lm | | |
| NAME: SF28-24V-5050-72-3000-80 | TYPE: | WEIGHT: |
| SPEC.: | DIM.: Length=1m | SERIAL No.: |
| MFR.: | SUR.: | Shielding Angle: |

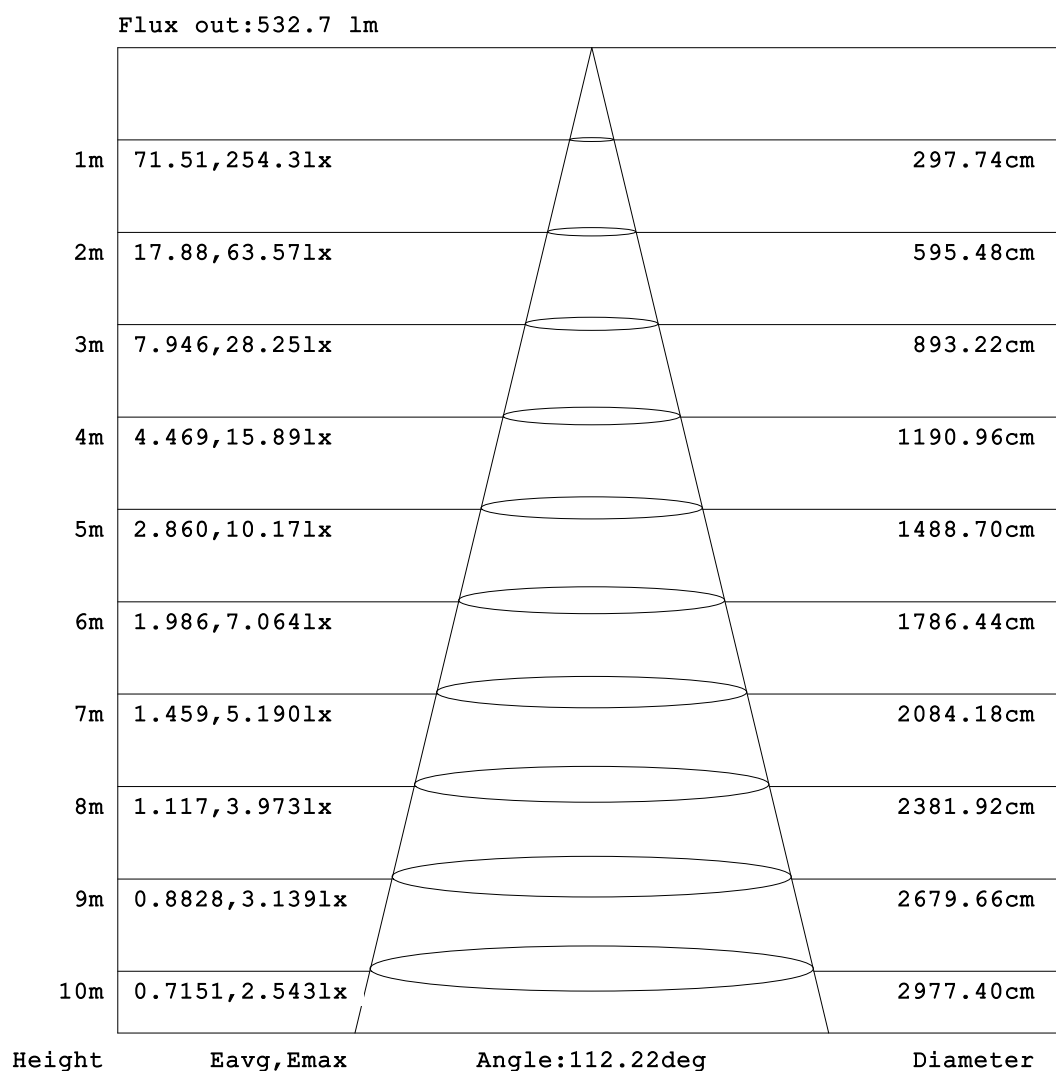


C Range: 0 - 360DEG
C Interval: 22.5DEG
Test Speed: HIGH
Temperature:25.3℃
Operators:Cloud
Test Date:2025-01-15

γ Range: 0 - 180DEG
γ Interval: 1.0DEG
Test System:EVERFINE GO-2000B_V1 SYSTEM V2.00.488
Humidity:65.0%
Test Distance:6.360m [K=1.0000]
Remarks:

AAI Figure

| | | |
|--|-----------------|------------------|
| Test:U:24.10V I:0.6701A P:16.15W PF:1.000 Freq:0Hz Lamp Flux:774.909x1 lm | | |
| NAME: SF28-24V-5050-72-3000-80 | TYPE: | WEIGHT: |
| SPEC.: | DIM.: Length=1m | SERIAL No.: |
| MFR.: | SUR.: | Shielding Angle: |



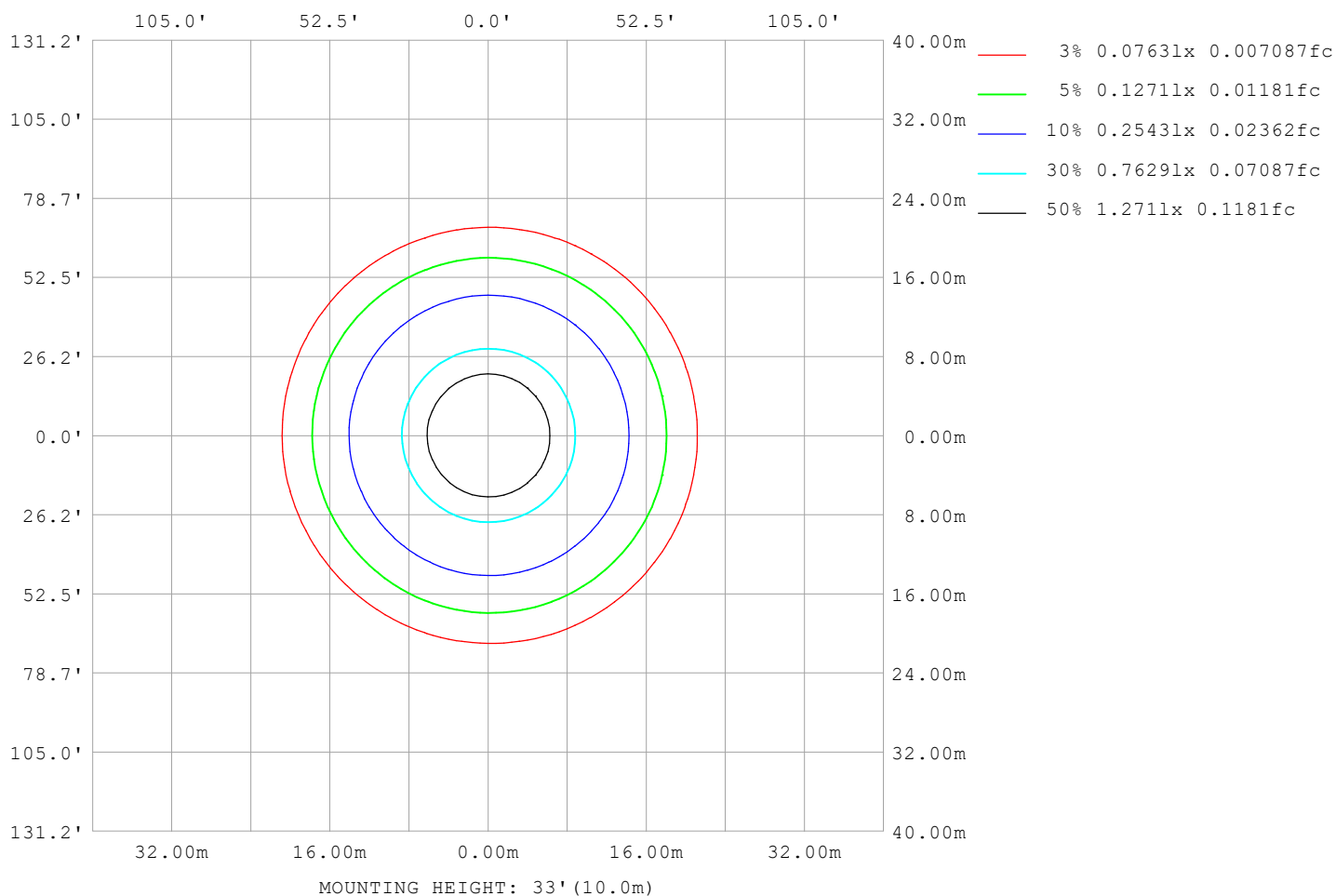
Note:The Curves indicate the illuminated area and the average illumination when the luminaire is at different distance.

C Range: 0 - 360DEG
C Interval: 22.5DEG
Test Speed: HIGH
Temperature:25.3℃
Operators:Cloud
Test Date:2025-01-15

γ Range: 0 - 180DEG
γ Interval: 1.0DEG
Test System:EVERFINE GO-2000B_V1 SYSTEM V2.00.488
Humidity:65.0%
Test Distance:6.360m [K=1.0000]
Remarks:

ISOLUX DIAGRAM

| | | |
|--|-----------------|------------------|
| Test:U:24.10V I:0.6701A P:16.15W PF:1.000 Freq:0Hz Lamp Flux:774.909x1 lm | | |
| NAME: SF28-24V-5050-72-3000-80 | TYPE: | WEIGHT: |
| SPEC.: | DIM.: Length=1m | SERIAL No.: |
| MFR.: | SUR.: | Shielding Angle: |



C Range: 0 - 360DEG
C Interval: 22.5DEG
Test Speed: HIGH
Temperature: 25.3°C
Operators: Cloud
Test Date: 2025-01-15

γ Range: 0 - 180DEG
γ Interval: 1.0DEG
Test System: EVERFINE GO-2000B_V1 SYSTEM V2.00.488
Humidity: 65.0%
Test Distance: 6.360m [K=1.0000]
Remarks:

LED Avg.L Report

| | | |
|--|-----------------|------------------|
| Test:U:24.10V I:0.6701A P:16.15W PF:1.000 Freq:0Hz Lamp Flux:774.909x1 lm | | |
| NAME: SF28-24V-5050-72-3000-80 | TYPE: | WEIGHT: |
| SPEC.: | DIM.: Length=1m | SERIAL No.: |
| MFR.: | SUR.: | Shielding Angle: |

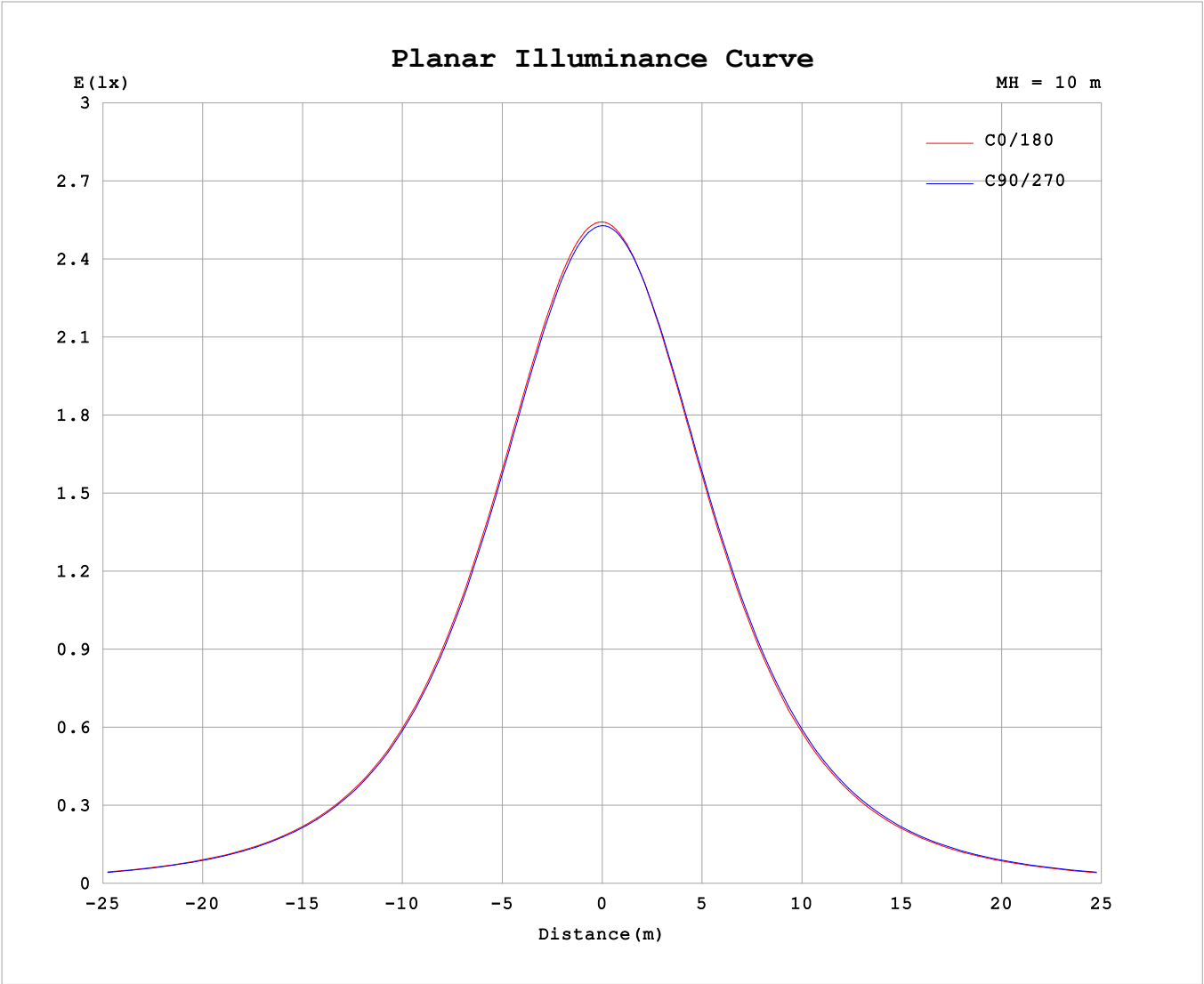
| AvgL | cd/m2 |
|------------------|-------|
| L_0~180 (65) av | 13048 |
| L_0~180 (75) av | 12940 |
| L_0~180 (85) av | 14302 |
| L_90~270 (65) av | 13200 |
| L_90~270 (75) av | 13048 |
| L_90~270 (85) av | 13917 |
| L_45 (65) av | 13163 |
| L_45 (75) av | 13050 |
| L_45 (85) av | 14275 |

Standard: GB/T 29293-2012

C Range: 0 - 360DEG
C Interval: 22.5DEG
Test Speed: HIGH
Temperature:25.3℃
Operators:Cloud
Test Date:2025-01-15

γ Range: 0 - 180DEG
γ Interval: 1.0DEG
Test System:EVERFINE GO-2000B_V1 SYSTEM V2.00.488
Humidity:65.0%
Test Distance:6.360m [K=1.0000]
Remarks:

Planar Illuminance Curve



| | |
|----------------------|---|
| C Range: 0 - 360DEG | γ Range: 0 - 180DEG |
| C Interval: 22.5DEG | γ Interval: 1.0DEG |
| Test Speed: HIGH | Test System:EVERFINE GO-2000B_V1 SYSTEM V2.00.488 |
| Temperature:25.3℃ | Humidity:65.0% |
| Operators:Cloud | Test Distance:6.360m [K=1.0000] |
| Test Date:2025-01-15 | Remarks: |

LUMINOUS DISTRIBUTION INTENSITY DATA

| | | | | | | | | | | | | | | | | | | |
|--|--|--|--|--|--|--|--|--|-----------------|--|--|--|--|------------------|--|--|--|--|
| Test:U:24.10V I:0.6701A P:16.15W PF:1.000 Freq:0Hz Lamp Flux:774.909x1 lm | | | | | | | | | | | | | | | | | | |
| NAME: SF28-24V-5050-72-3000-80 | | | | | | | | | TYPE: | | | | | WEIGHT: | | | | |
| SPEC.: | | | | | | | | | DIM.: Length=1m | | | | | SERIAL No.: | | | | |
| MFR.: | | | | | | | | | SUR.: | | | | | Shielding Angle: | | | | |

Table--1

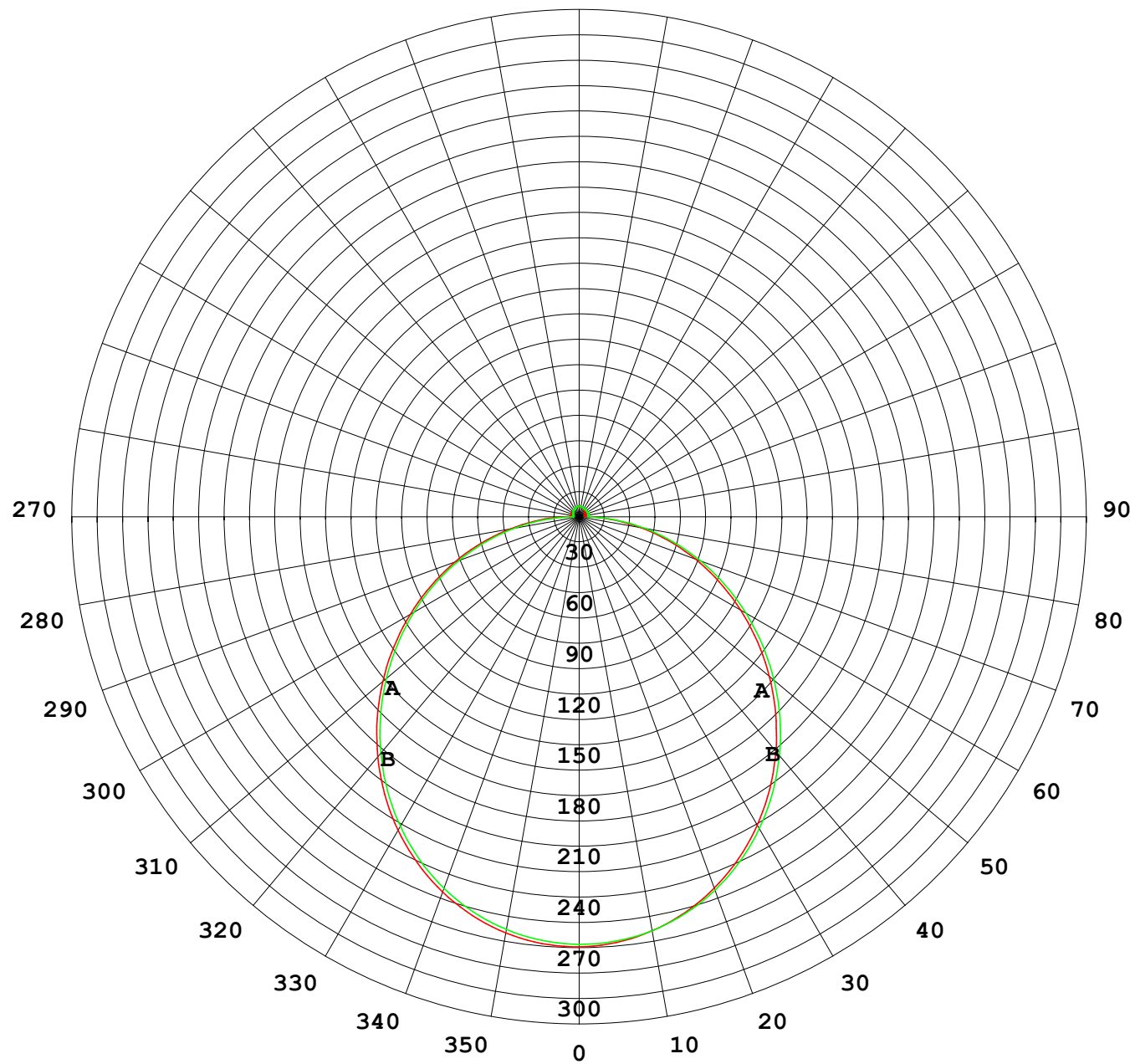
UNIT: cd

| C (DEG) γ (DEG) | C (DEG) | | | | | | | | | | | | | | | | | |
|--------------------|---------|------|------|------|------|-------|------|-------|------|-------|------|-------|------|-------|------|-------|--|--|
| | 0 | 22.5 | 45 | 67.5 | 90 | 112.5 | 135 | 157.5 | 180 | 202.5 | 225 | 247.5 | 270 | 292.5 | 315 | 337.5 | | |
| 0 | 253 | 253 | 253 | 253 | 253 | 253 | 253 | 253 | 253 | 253 | 253 | 253 | 253 | 253 | 253 | 253 | | |
| 5 | 252 | 252 | 252 | 252 | 252 | 252 | 252 | 251 | 252 | 252 | 252 | 252 | 252 | 252 | 252 | 252 | | |
| 10 | 249 | 249 | 249 | 249 | 248 | 248 | 248 | 247 | 248 | 248 | 248 | 248 | 249 | 249 | 249 | 249 | | |
| 15 | 243 | 243 | 243 | 243 | 242 | 242 | 241 | 241 | 241 | 241 | 242 | 243 | 243 | 244 | 244 | 244 | | |
| 20 | 235 | 235 | 235 | 235 | 234 | 234 | 233 | 233 | 233 | 233 | 234 | 235 | 235 | 236 | 236 | 236 | | |
| 25 | 225 | 225 | 225 | 225 | 224 | 223 | 222 | 222 | 222 | 223 | 224 | 224 | 225 | 226 | 226 | 226 | | |
| 30 | 213 | 213 | 213 | 213 | 212 | 211 | 210 | 210 | 210 | 210 | 211 | 212 | 213 | 214 | 214 | 214 | | |
| 35 | 200 | 200 | 200 | 199 | 198 | 197 | 196 | 196 | 196 | 196 | 198 | 198 | 200 | 200 | 201 | 200 | | |
| 40 | 184 | 185 | 185 | 184 | 183 | 182 | 181 | 180 | 180 | 181 | 182 | 183 | 184 | 185 | 186 | 185 | | |
| 45 | 168 | 169 | 168 | 168 | 166 | 165 | 164 | 164 | 164 | 164 | 166 | 167 | 168 | 169 | 170 | 169 | | |
| 50 | 151 | 151 | 151 | 151 | 149 | 148 | 147 | 146 | 146 | 147 | 148 | 149 | 151 | 151 | 152 | 152 | | |
| 55 | 133 | 134 | 133 | 133 | 131 | 130 | 129 | 128 | 128 | 129 | 130 | 131 | 133 | 133 | 134 | 134 | | |
| 60 | 115 | 115 | 115 | 114 | 113 | 112 | 110 | 110 | 110 | 110 | 112 | 113 | 114 | 115 | 116 | 116 | | |
| 65 | 96.2 | 96.7 | 96.3 | 95.8 | 94.4 | 93.2 | 91.7 | 91.1 | 91.3 | 91.8 | 93.0 | 93.9 | 95.3 | 96.2 | 97.2 | 97.1 | | |
| 70 | 77.7 | 78.1 | 77.7 | 77.2 | 75.7 | 74.5 | 73.1 | 72.6 | 72.8 | 73.2 | 74.3 | 75.2 | 76.5 | 77.5 | 78.5 | 78.5 | | |
| 75 | 59.3 | 59.8 | 59.2 | 58.6 | 57.1 | 56.0 | 54.8 | 54.4 | 54.6 | 54.9 | 55.8 | 56.6 | 57.8 | 58.8 | 59.8 | 60.0 | | |
| 80 | 41.0 | 41.5 | 41.0 | 40.1 | 38.6 | 37.6 | 36.7 | 36.5 | 36.7 | 36.9 | 37.6 | 38.2 | 39.2 | 40.3 | 41.4 | 41.6 | | |
| 85 | 23.3 | 23.7 | 22.9 | 21.9 | 20.4 | 19.6 | 19.0 | 18.9 | 19.0 | 19.0 | 19.6 | 20.0 | 20.9 | 21.9 | 23.1 | 23.6 | | |
| 90 | 9.43 | 9.46 | 8.09 | 6.06 | 3.81 | 4.91 | 6.05 | 6.95 | 7.00 | 7.04 | 6.82 | 6.01 | 5.09 | 6.66 | 8.45 | 9.41 | | |
| 95 | 5.32 | 5.24 | 4.77 | 4.03 | 3.62 | 3.67 | 3.69 | 3.70 | 3.30 | 3.75 | 4.49 | 5.07 | 5.24 | 5.42 | 5.52 | 5.33 | | |
| 100 | 5.11 | 5.01 | 4.55 | 3.90 | 3.73 | 3.78 | 3.83 | 3.86 | 3.40 | 3.83 | 4.61 | 5.16 | 5.36 | 5.31 | 5.26 | 5.08 | | |
| 105 | 4.96 | 4.86 | 4.48 | 4.00 | 3.88 | 3.96 | 4.04 | 4.06 | 3.59 | 3.98 | 4.73 | 5.25 | 5.45 | 5.31 | 5.16 | 4.84 | | |
| 110 | 4.90 | 4.88 | 4.57 | 4.09 | 4.09 | 4.13 | 4.25 | 4.28 | 3.78 | 4.13 | 4.84 | 5.27 | 5.51 | 5.27 | 5.18 | 4.74 | | |
| 115 | 5.01 | 4.98 | 4.64 | 4.19 | 4.27 | 4.34 | 4.45 | 4.49 | 3.98 | 4.28 | 4.94 | 5.33 | 5.55 | 5.30 | 5.14 | 4.84 | | |
| 120 | 5.10 | 5.07 | 4.56 | 4.37 | 4.46 | 4.55 | 4.60 | 4.69 | 4.17 | 4.42 | 4.98 | 5.38 | 5.57 | 5.34 | 5.09 | 4.87 | | |
| 125 | 5.17 | 5.11 | 4.43 | 4.56 | 4.63 | 4.74 | 4.75 | 4.86 | 4.37 | 4.54 | 5.02 | 5.42 | 5.59 | 5.38 | 4.95 | 4.87 | | |
| 130 | 5.07 | 4.90 | 4.61 | 4.74 | 4.80 | 4.92 | 4.94 | 4.96 | 4.50 | 4.62 | 5.12 | 5.46 | 5.60 | 5.41 | 5.04 | 4.66 | | |
| 135 | 4.96 | 4.94 | 4.80 | 4.93 | 4.97 | 5.11 | 5.13 | 5.13 | 4.66 | 4.77 | 5.22 | 5.52 | 5.62 | 5.46 | 5.14 | 4.72 | | |
| 140 | 5.13 | 4.95 | 4.99 | 5.10 | 5.14 | 5.29 | 5.32 | 5.33 | 4.87 | 4.95 | 5.34 | 5.57 | 5.66 | 5.51 | 5.25 | 4.89 | | |
| 145 | 5.31 | 5.13 | 5.17 | 5.27 | 5.32 | 5.48 | 5.49 | 5.51 | 5.10 | 5.15 | 5.46 | 5.64 | 5.70 | 5.57 | 5.36 | 5.07 | | |
| 150 | 5.50 | 5.32 | 5.34 | 5.45 | 5.55 | 5.66 | 5.68 | 5.70 | 5.31 | 5.33 | 5.59 | 5.72 | 5.77 | 5.64 | 5.47 | 5.25 | | |
| 155 | 5.70 | 5.51 | 5.53 | 5.74 | 5.75 | 5.85 | 5.85 | 5.87 | 5.52 | 5.53 | 5.72 | 5.82 | 5.85 | 5.74 | 5.62 | 5.44 | | |
| 160 | 5.86 | 5.71 | 5.87 | 5.93 | 5.93 | 6.02 | 6.02 | 6.03 | 5.71 | 5.73 | 5.86 | 5.92 | 5.94 | 5.85 | 5.77 | 5.65 | | |
| 165 | 5.97 | 5.89 | 6.02 | 6.09 | 6.09 | 6.16 | 6.14 | 6.16 | 5.89 | 5.91 | 5.99 | 6.03 | 6.05 | 5.98 | 5.92 | 5.85 | | |
| 170 | 6.03 | 6.04 | 6.14 | 6.21 | 6.21 | 6.26 | 6.24 | 6.25 | 5.99 | 6.06 | 6.11 | 6.13 | 6.16 | 6.09 | 6.07 | 6.04 | | |
| 175 | 6.13 | 6.25 | 6.23 | 6.30 | 6.29 | 6.33 | 6.30 | 6.31 | 6.12 | 6.19 | 6.23 | 6.24 | 6.28 | 6.24 | 6.23 | 6.19 | | |
| 180 | 6.19 | 6.28 | 6.28 | 6.32 | 6.33 | 6.34 | 6.32 | 6.31 | 6.20 | 6.26 | 6.29 | 6.32 | 6.34 | 6.34 | 6.33 | 6.30 | | |

C Range: 0 - 360DEG
C Interval: 22.5DEG
Test Speed: HIGH
Temperature:25.3℃
Operators:Cloud
Test Date:2025-01-15

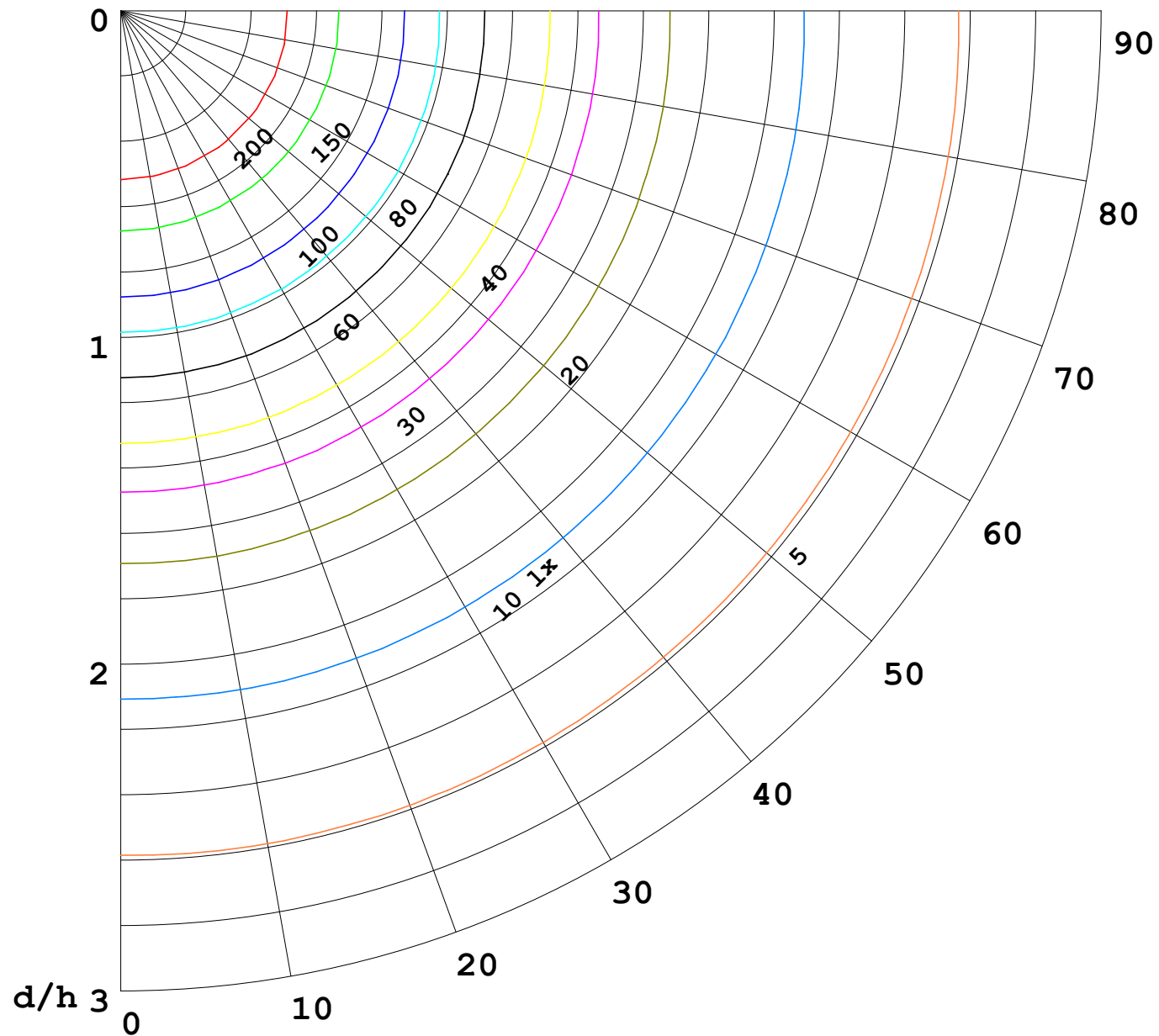
γ Range: 0 - 180DEG
γ Interval: 1.0DEG
Test System:EVERFINE GO-2000B_V1 SYSTEM V2.00.488
Humidity:65.0%
Test Distance:6.360m [K=1.0000]
Remarks:

I (cd)



1000 lm

$\kappa = 1$



F = 1000 lm
 K = 0.7
 Hcc = 0.8 m
 Hfc = 0.0 m
 Eave = 100 lx

| | Pcc | Pw | Pfc |
|-------|-----|----|-----|
| ————— | 70 | 50 | 30 |
| ————— | 50 | 30 | 20 |

