

LUMINAIRE PHOTOMETRIC TEST REPORT

Test:U:24.00V I:0.5404A P:12.97W PF:1.000 Freq:0Hz
Lamp Flux:57.915x1 lm

NAME: SF28-24V-5050-72-B

TYPE:

WEIGHT:

SPEC.:

DIM.: Length=1m

SERIAL No.:

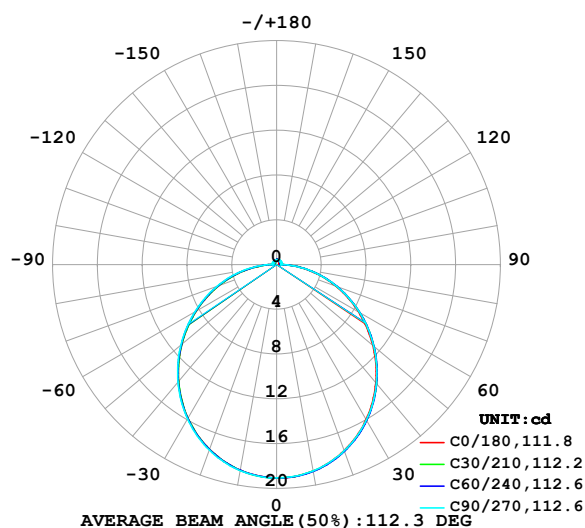
MFR.: OLympia lighting

SUR.:

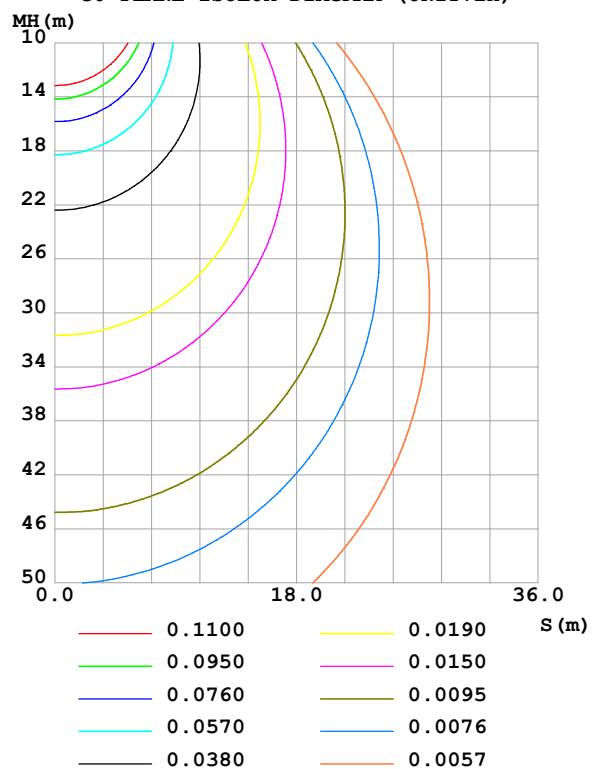
Shielding Angle:

DATA OF LAMP		PHOTOMETRIC DATA				Eff: 4.47 lm/W
MODEL	5050	I _{max} (cd)	19.05	S/MH(C0/180)	1.24	
NOMINAL POWER(W)	13	LOR(%)	100.0	S/MH(C90/270)	1.24	
RATED VOLTAGE(V)	24	TOTAL FLUX(lm)	57.915	η UP,DN(C0-180)	2.1,48.3	
NOMINAL FLUX(lm)	57.915	CIE CLASS	DIRECT	η UP,DN(C180-360)	1.8,47.8	
LAMPS INSIDE	1	η up (%)	3.9	CIBSE SHR NOM	1.25	
TEST VOLTAGE(V)		η down (%)	96.1	CIBSE SHR MAX	1.35	

LUMINOUS INTENSITY DISTRIBUTION DIAGRAM



C0 PLANE ISOLUX DIAGRAM (UNIT:lx)



C Range: 0 - 360DEG
C Interval: 30.0DEG
Test Speed: HIGH
Temperature:25.3℃
Operators:
Test Date:2025-05-19

γ Range: 0 - 180DEG
γ Interval: 1.0DEG
Test System:EVERFINE GO-2000B_V1 SYSTEM V2.00.488
Humidity:65.0%
Test Distance:6.360m [K=1.0000]
Remarks:

ZONAL FLUX DIAGRAM

ZONAL FLUX DIAGRAM:

γ	C0	C45	C90	C135	C180	C225	C270	C315	γ	Φ zone	Φ total	%lum,lamp
10	18.73	18.75	18.72	18.69	18.65	18.66	18.69	18.72	0- 10	1.802	1.802	3.11,3.11
20	17.68	17.73	17.69	17.62	17.56	17.56	17.62	17.67	10- 20	5.151	6.954	12,12
30	15.99	16.08	16.04	15.93	15.85	15.85	15.92	15.99	20- 30	7.775	14.73	25.4,25.4
40	13.79	13.90	13.87	13.74	13.64	13.65	13.72	13.79	30- 40	9.331	24.06	41.5,41.5
50	11.23	11.35	11.32	11.17	11.08	11.08	11.17	11.24	40- 50	9.657	33.72	58.2,58.2
60	8.455	8.586	8.563	8.396	8.310	8.325	8.435	8.483	50- 60	8.801	42.52	73.4,73.4
70	5.643	5.748	5.732	5.564	5.499	5.521	5.653	5.679	60- 70	6.967	49.48	85.4,85.4
80	2.907	2.978	2.947	2.796	2.739	2.783	2.934	2.937	70- 80	4.481	53.97	93.2,93.2
90	0.5180	0.5012	0.3781	0.4172	0.4029	0.3742	0.3939	0.4646	80- 90	1.703	55.67	96.1,96.1
100	0.2454	0.3335	0.4099	0.3347	0.2339	0.2815	0.3896	0.2727	90-100	0.3528	56.02	96.7,96.7
110	0.2713	0.3595	0.4300	0.3621	0.2714	0.2974	0.4041	0.2885	100-110	0.3406	56.36	97.3,97.3
120	0.3088	0.3825	0.4416	0.3866	0.3002	0.3133	0.4069	0.3029	110-120	0.3406	56.70	97.9,97.9
130	0.3348	0.3984	0.4445	0.3996	0.3291	0.3320	0.3839	0.3159	120-130	0.3220	57.02	98.5,98.5
140	0.3608	0.4086	0.4473	0.4140	0.3637	0.3537	0.3637	0.3318	130-140	0.2882	57.31	99,99
150	0.3868	0.4215	0.4531	0.4299	0.3955	0.3897	0.3637	0.3636	140-150	0.2448	57.56	99.4,99.4
160	0.4128	0.4388	0.4560	0.4429	0.4244	0.4201	0.4069	0.4039	150-160	0.1911	57.75	99.7,99.7
170	0.4359	0.4475	0.4560	0.4501	0.4560	0.4446	0.4386	0.4400	160-170	0.1234	57.87	99.9,99.9
180	0.4532	0.4561	0.4560	0.4544	0.4561	0.4547	0.4531	0.4515	170-180	0.0429	57.91	100,100
DEG	LUMINOUS INTENSITY:cd									UNIT:lm		

Conical surface Flux(90deg): 28.924 lm

%lum = 49.9%

%lamp = 49.9%

Conical surface Flux(130deg): 46.278 lm

%lum = 79.9%

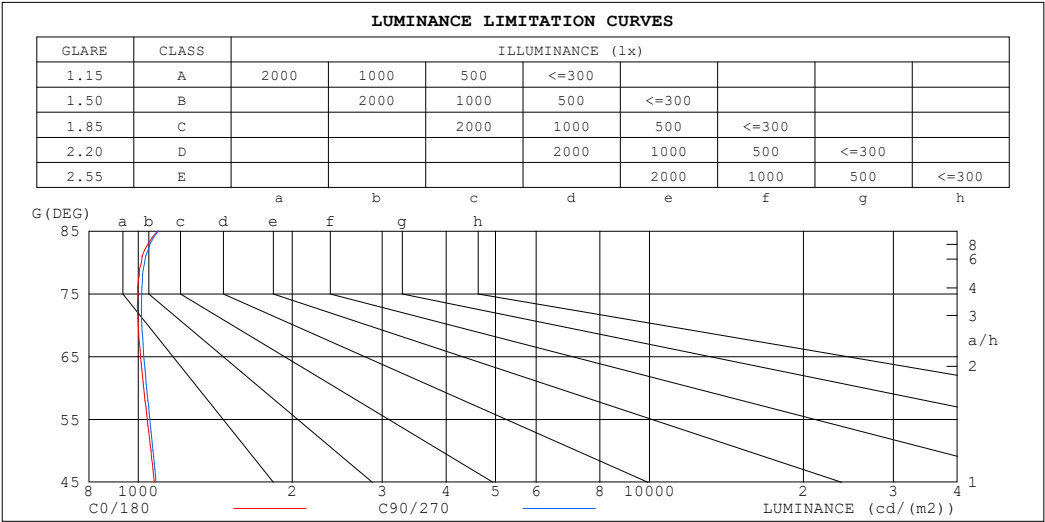
%lamp = 79.9%

C Range: 0 - 360DEG
 C Interval: 30.0DEG
 Test Speed: HIGH
 Temperature:25.3℃
 Operators:
 Test Date:2025-05-19

γ Range: 0 - 180DEG
 γ Interval: 1.0DEG
 Test System:EVERFINE GO-2000B_V1 SYSTEM V2.00.488
 Humidity:65.0%
 Test Distance:6.360m [K=1.0000]
 Remarks:

LUMINANCE LIMITATION CURVES

Test:U:24.00V I:0.5404A P:12.97W PF:1.000 Freq:0Hz Lamp Flux:57.915x1 lm		
NAME: SF28-24V-5050-72-B	TYPE:	WEIGHT:
SPEC.:	DIM.: Length=1m	SERIAL No.:
MFR.: OLYmpia lighting	SUR.:	Shielding Angle:



LUMINANCE cd/(m2)		
G (DEG)	C0/180	C90/270
85	1092	1094
80	1014	1029
75	998	1015
70	1000	1016
65	1010	1025
60	1025	1038
55	1041	1053
50	1059	1068
45	1074	1083

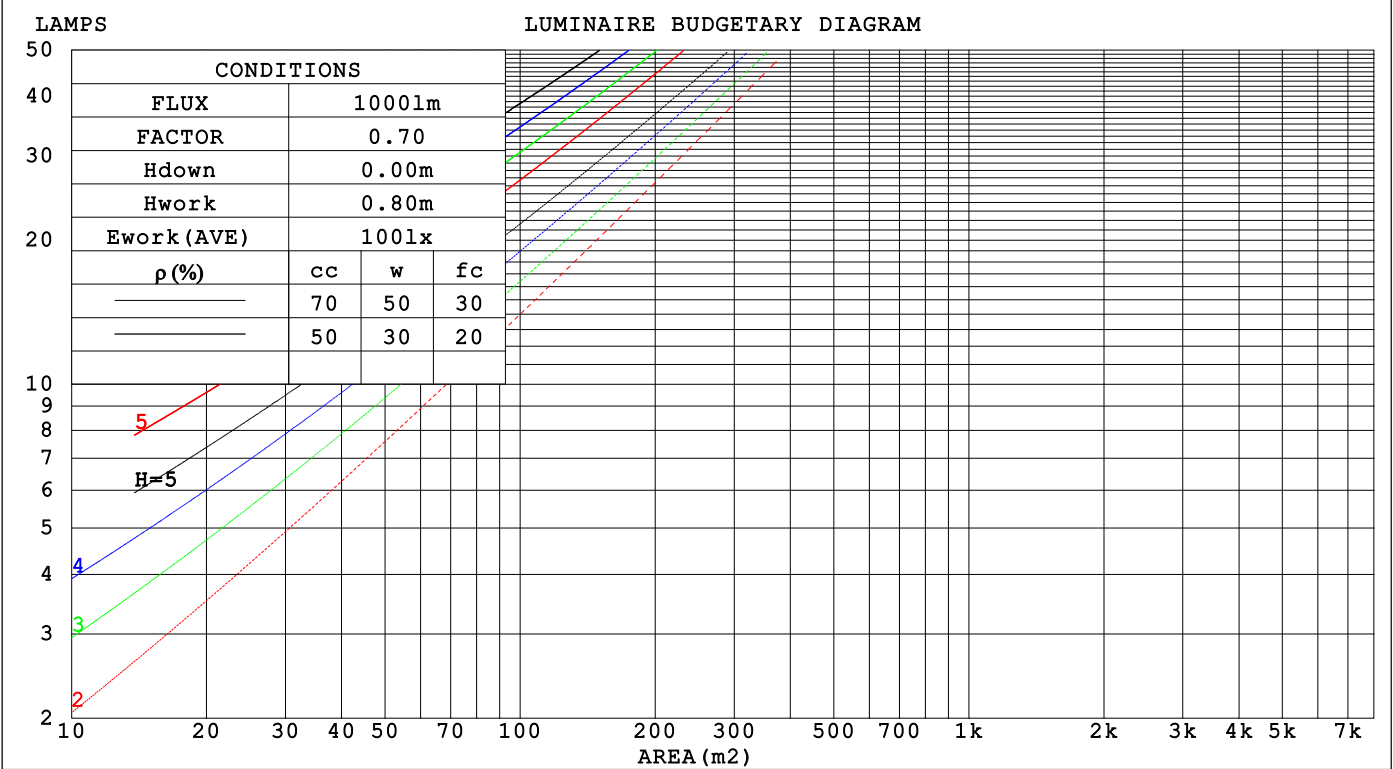
C Range: 0 - 360DEG
C Interval: 30.0DEG
Test Speed: HIGH
Temperature:25.3℃
Operators:
Test Date:2025-05-19

γ Range: 0 - 180DEG
γ Interval: 1.0DEG
Test System:EVERFINE GO-2000B_V1 SYSTEM V2.00.488
Humidity:65.0%
Test Distance:6.360m [K=1.0000]
Remarks:

CU AND LUMINAIRE BUDGETARY ESTIMATE DIAGRAM

Test:U:24.00V I:0.5404A P:12.97W PF:1.000 Freq:0Hz		
Lamp Flux:57.915x1 lm		
NAME: SF28-24V-5050-72-B	TYPE:	WEIGHT:
SPEC.:	DIM.: Length=1m	SERIAL No.:
MFR.: OLYMPIA lighting	SUR.:	Shielding Angle:

pcc	80%			70%			50%			30%			10%			0
ρw	50%	30%	10%	50%	30%	10%	50%	30%	10%	50%	30%	10%	50%	30%	10%	0
ρfc	20%			20%			20%			20%			20%			0
RCR	RCR:Room Cavity Ratio			Coefficients of Utilization(CU)												
0.0	1.18	1.18	1.18	1.15	1.15	1.15	1.09	1.09	1.09	1.03	1.03	1.03	.98	.98	.98	.96
1.0	1.02	.98	.94	.99	.95	.92	.95	.91	.88	.90	.87	.85	.86	.84	.81	.79
2.0	.89	.82	.76	.86	.80	.74	.82	.77	.72	.78	.74	.70	.75	.71	.68	.65
3.0	.78	.69	.63	.76	.68	.62	.72	.66	.60	.69	.63	.59	.66	.61	.57	.55
4.0	.69	.60	.53	.67	.59	.52	.64	.57	.51	.61	.55	.50	.59	.53	.49	.47
5.0	.61	.52	.45	.60	.51	.45	.57	.50	.44	.55	.48	.43	.53	.47	.42	.40
6.0	.55	.46	.40	.54	.45	.39	.52	.44	.39	.50	.43	.38	.48	.42	.37	.35
7.0	.50	.41	.35	.49	.41	.35	.47	.40	.34	.45	.39	.34	.44	.38	.33	.31
8.0	.46	.37	.31	.45	.37	.31	.43	.36	.30	.41	.35	.30	.40	.34	.30	.28
9.0	.42	.33	.28	.41	.33	.28	.40	.32	.27	.38	.32	.27	.37	.31	.27	.25
10.0	.39	.31	.25	.38	.30	.25	.37	.30	.25	.35	.29	.25	.34	.28	.24	.22



C Range: 0 - 360DEG
C Interval: 30.0DEG
Test Speed: HIGH
Temperature:25.3℃
Operators:
Test Date:2025-05-19

γ Range: 0 - 180DEG
γ Interval: 1.0DEG
Test System:EVERFINE GO-2000B_V1 SYSTEM V2.00.488
Humidity:65.0%
Test Distance:6.360m [K=1.0000]
Remarks:

WEC AND CCEC

Test:U:24.00V I:0.5404A P:12.97W PF:1.000 Freq:0Hz Lamp Flux:57.915x1 lm		
NAME: SF28-24V-5050-72-B	TYPE:	WEIGHT:
SPEC.:	DIM.: Length=1m	SERIAL No.:
MFR.: OLympia lighting	SUR.:	Shielding Angle:

pcc	80%			70%			50%			30%			10%			0														
pw	50%	30%	10%	50%	30%	10%	50%	30%	10%	50%	30%	10%	50%	30%	10%	0														
pfc	20%			20%			20%			20%			20%			0														
RCR	RCR:Room Cavity Ratio															Wall Exitance Coefficients(WEC)														
0.0																														
1.0	.325	.185	.059	.317	.181	.057	.301	.173	.055	.287	.165	.053	.274	.159	.051															
2.0	.300	.164	.050	.293	.161	.050	.279	.155	.048	.266	.149	.047	.254	.144	.045															
3.0	.275	.146	.044	.268	.144	.043	.256	.139	.042	.245	.134	.041	.234	.130	.040															
4.0	.252	.131	.039	.247	.129	.038	.236	.125	.037	.225	.121	.037	.216	.117	.036															
5.0	.232	.118	.034	.227	.117	.034	.217	.113	.033	.208	.110	.033	.200	.107	.032															
6.0	.215	.108	.031	.210	.106	.031	.201	.103	.030	.193	.100	.030	.186	.098	.029															
7.0	.200	.099	.028	.195	.097	.028	.188	.095	.027	.180	.092	.027	.173	.090	.026															
8.0	.186	.091	.026	.182	.090	.025	.175	.088	.025	.169	.085	.025	.162	.083	.024															
9.0	.174	.084	.024	.171	.083	.023	.164	.081	.023	.158	.079	.023	.152	.077	.022															
10.0	.164	.079	.022	.161	.078	.022	.155	.076	.021	.149	.074	.021	.144	.072	.021															

pcc	80%			70%			50%			30%			10%			0
pw	50%	30%	10%	50%	30%	10%	50%	30%	10%	50%	30%	10%	50%	30%	10%	0
pfc	20%			20%			20%			20%			20%			0
RCR	RCR:Room Cavity Ratio						Ceiling Cavity Exitance Coefficients (CCEC)									
0.0	.220	.220	.220	.188	.188	.188	.128	.128	.128	.074	.074	.074	.024	.024	.024	
1.0	.211	.186	.163	.181	.159	.140	.124	.110	.097	.071	.063	.056	.023	.020	.018	
2.0	.203	.162	.127	.174	.139	.110	.119	.096	.077	.069	.056	.045	.022	.018	.015	
3.0	.196	.144	.104	.168	.125	.090	.115	.087	.063	.066	.051	.037	.021	.016	.012	
4.0	.188	.131	.088	.161	.113	.077	.111	.079	.054	.064	.046	.032	.021	.015	.010	
5.0	.180	.121	.077	.155	.105	.067	.107	.073	.047	.062	.043	.028	.020	.014	.009	
6.0	.173	.113	.069	.149	.098	.060	.103	.068	.043	.060	.040	.025	.019	.013	.008	
7.0	.166	.106	.064	.143	.092	.055	.099	.064	.039	.057	.038	.023	.019	.012	.008	
8.0	.160	.100	.059	.138	.087	.052	.095	.061	.037	.055	.036	.022	.018	.012	.007	
9.0	.154	.095	.056	.132	.083	.049	.092	.058	.035	.053	.034	.021	.017	.011	.007	
10.0	.148	.091	.053	.128	.079	.046	.088	.056	.033	.052	.033	.020	.017	.011	.007	

C Range: 0 - 360DEG
C Interval: 30.0DEG
Test Speed: HIGH
Temperature:25.3℃
Operators:
Test Date:2025-05-19

γ Range: 0 - 180DEG
γ Interval: 1.0DEG
Test System:EVERFINE GO-2000B_V1 SYSTEM V2.00.488
Humidity:65.0%
Test Distance:6.360m [K=1.0000]
Remarks:

UGR(Unified Glare Rating) Table

Test:U:24.00V I:0.5404A P:12.97W PF:1.000 Freq:0Hz Lamp Flux:57.915x1 lm											
NAME: SF28-24V-5050-72-B					TYPE:			WEIGHT:			
SPEC.:					DIM.: Length=1m			SERIAL No.:			
MFR.: OLympia lighting					SUR.:			Shielding Angle:			
ceiling/cavity	0.7	0.7	0.5	0.5	0.3	0.7	0.7	0.5	0.5	0.3	
walls	0.5	0.3	0.5	0.3	0.3	0.5	0.3	0.5	0.3	0.3	
working plane	0.2	0.2	0.2	0.2	0.2	0.2	0.2	0.2	0.2	0.2	
Room dimensions		Viewed crosswise					Viewed endwise				
x = 2H y = 2H	2H	21.7	23.2	22.0	23.5	23.7	21.8	23.2	22.1	23.5	23.8
	3H	23.4	24.7	23.7	25.1	25.4	23.4	24.8	23.8	25.1	25.4
	4H	24.1	25.4	24.5	25.7	26.1	24.2	25.5	24.6	25.8	26.2
	6H	24.8	26.0	25.1	26.3	26.7	24.8	26.1	25.2	26.4	26.8
	8H	25.0	26.2	25.4	26.5	26.9	25.1	26.3	25.5	26.6	27.0
	12H	25.2	26.4	25.6	26.7	27.1	25.3	26.4	25.7	26.8	27.2
4H	2H	22.4	23.7	22.7	24.0	24.3	22.4	23.7	22.8	24.0	24.4
	3H	24.2	25.4	24.6	25.7	26.1	24.3	25.4	24.7	25.8	26.2
	4H	25.1	26.2	25.6	26.6	27.0	25.2	26.2	25.6	26.6	27.0
	6H	25.9	26.8	26.4	27.3	27.7	26.0	26.9	26.4	27.3	27.8
	8H	26.2	27.1	26.7	27.5	28.0	26.3	27.2	26.8	27.6	28.1
	12H	26.5	27.3	27.0	27.8	28.2	26.6	27.4	27.0	27.8	28.3
8H	4H	25.5	26.3	25.9	26.8	27.2	25.5	26.4	26.0	26.8	27.3
	6H	26.4	27.2	26.9	27.6	28.2	26.5	27.2	27.0	27.7	28.2
	8H	26.9	27.5	27.4	28.0	28.6	26.9	27.6	27.5	28.1	28.6
	12H	27.3	27.8	27.8	28.4	28.9	27.3	27.9	27.9	28.4	29.0
12H	4H	25.5	26.3	26.0	26.8	27.2	25.5	26.3	26.0	26.8	27.3
	6H	26.5	27.2	27.1	27.7	28.2	26.6	27.2	27.1	27.7	28.3
	8H	27.1	27.6	27.6	28.1	28.7	27.1	27.7	27.6	28.2	28.7
Variations with the observer position at spacings(CIE Pub.117):											
S = 1.0H		+ 0.1 / - 0.2					+ 0.1 / - 0.2				
1.5H		+ 0.2 / - 0.3					+ 0.2 / - 0.3				
2.0H		+ 0.1 / - 0.3					+ 0.1 / - 0.3				

CIE Pub.117, 57.91 lm Total Lamp Luminous Flux Correct (8log(F/F0) = -9.9)
Area: 0.0165 m2

C Range: 0 - 360DEG
C Interval: 30.0DEG
Test Speed: HIGH
Temperature:25.3℃
Operators:
Test Date:2025-05-19

γ Range: 0 - 180DEG
γ Interval: 1.0DEG
Test System:EVERFINE GO-2000B_V1 SYSTEM V2.00.488
Humidity:65.0%
Test Distance:6.360m [K=1.0000]
Remarks:

UTILIZATION FACTORS TABLE

Test:U:24.00V I:0.5404A P:12.97W PF:1.000 Freq:0Hz Lamp Flux:57.915x1 lm		
NAME: SF28-24V-5050-72-B	TYPE:	WEIGHT:
SPEC.:	DIM.: Length=1m	SERIAL No.:
MFR.: OLympia lighting	SUR.:	Shielding Angle:

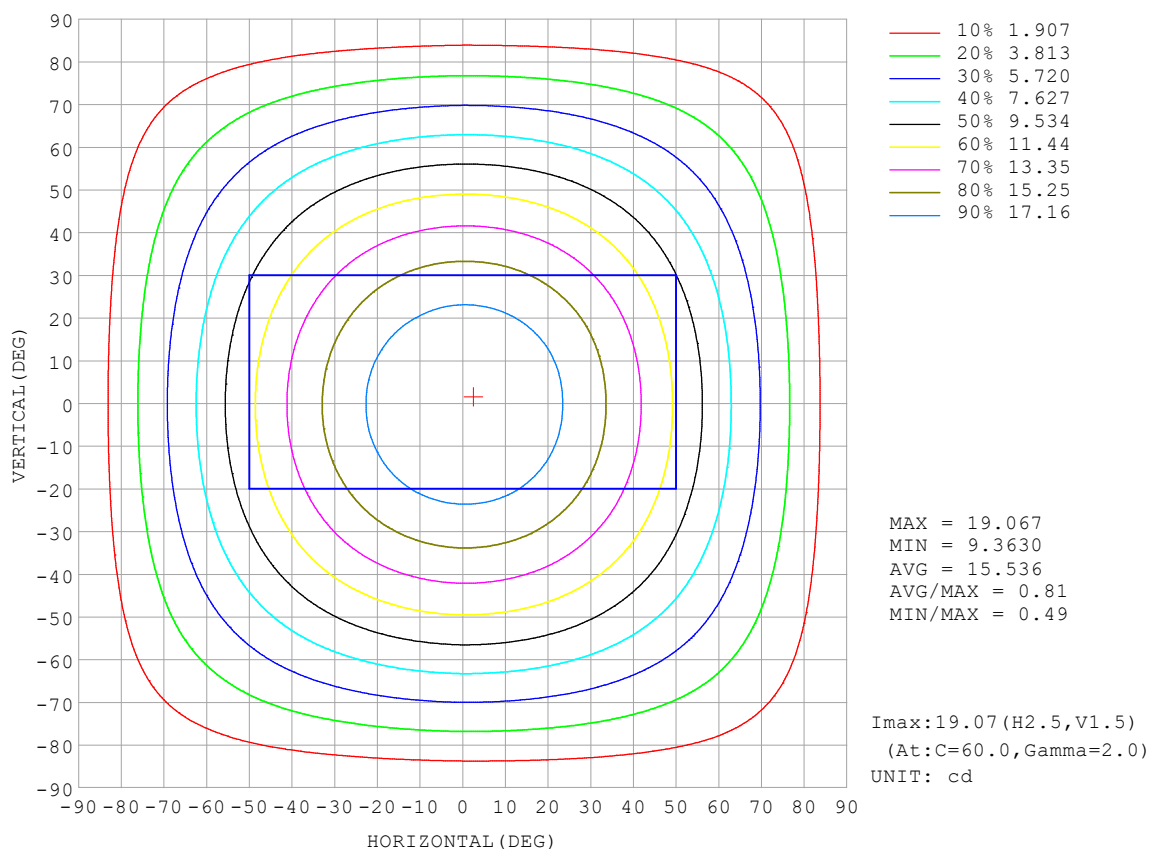
REFLECTANCE										
Ceiling	0.8	0.8	0.8	0.7	0.7	0.7	0.5	0.5	0.5	0
Walls	0.7	0.5	0.3	0.7	0.5	0.3	0.7	0.5	0.3	0
Working plane	0.2	0.2	0.2	0.2	0.2	0.2	0.2	0.2	0.2	0
ROOM INDEX	UTILIZATION FACTORS (PERCENT) $k(RI) \times RCR = 5$									
$k = 0.60$	56	44	37	55	44	37	53	43	37	30
0.80	66	54	46	64	53	46	62	52	45	38
1.00	74	62	55	72	62	55	70	63	54	46
1.25	81	70	63	79	69	62	76	67	61	53
1.50	86	76	68	84	74	68	80	72	66	58
2.00	93	84	77	91	82	76	87	80	74	65
2.50	97	89	82	94	87	81	90	84	79	69
3.00	100	93	87	98	91	86	93	88	83	73
4.00	104	98	93	102	96	92	97	92	88	78
5.00	107	102	97	104	99	95	99	95	92	81
ROOM INDEX	UF (total)									Direct
According to DIN EN 13032-2 2004			Suspended					SHRNOM = 1.25		

C Range: 0 - 360DEG
 C Interval: 30.0DEG
 Test Speed: HIGH
 Temperature: 25.3 °C
 Operators:
 Test Date: 2025-05-19

γ Range: 0 - 180DEG
 γ Interval: 1.0DEG
 Test System: EVERFINE GO-2000B_V1 SYSTEM V2.00.488
 Humidity: 65.0%
 Test Distance: 6.360m [K=1.0000]
 Remarks:

ISOCANDELA DIAGRAM

Test:U:24.00V I:0.5404A P:12.97W PF:1.000 Freq:0Hz Lamp Flux:57.915x1 lm		
NAME: SF28-24V-5050-72-B	TYPE:	WEIGHT:
SPEC.:	DIM.: Length=1m	SERIAL No.:
MFR.: OLympia lighting	SUR.:	Shielding Angle:

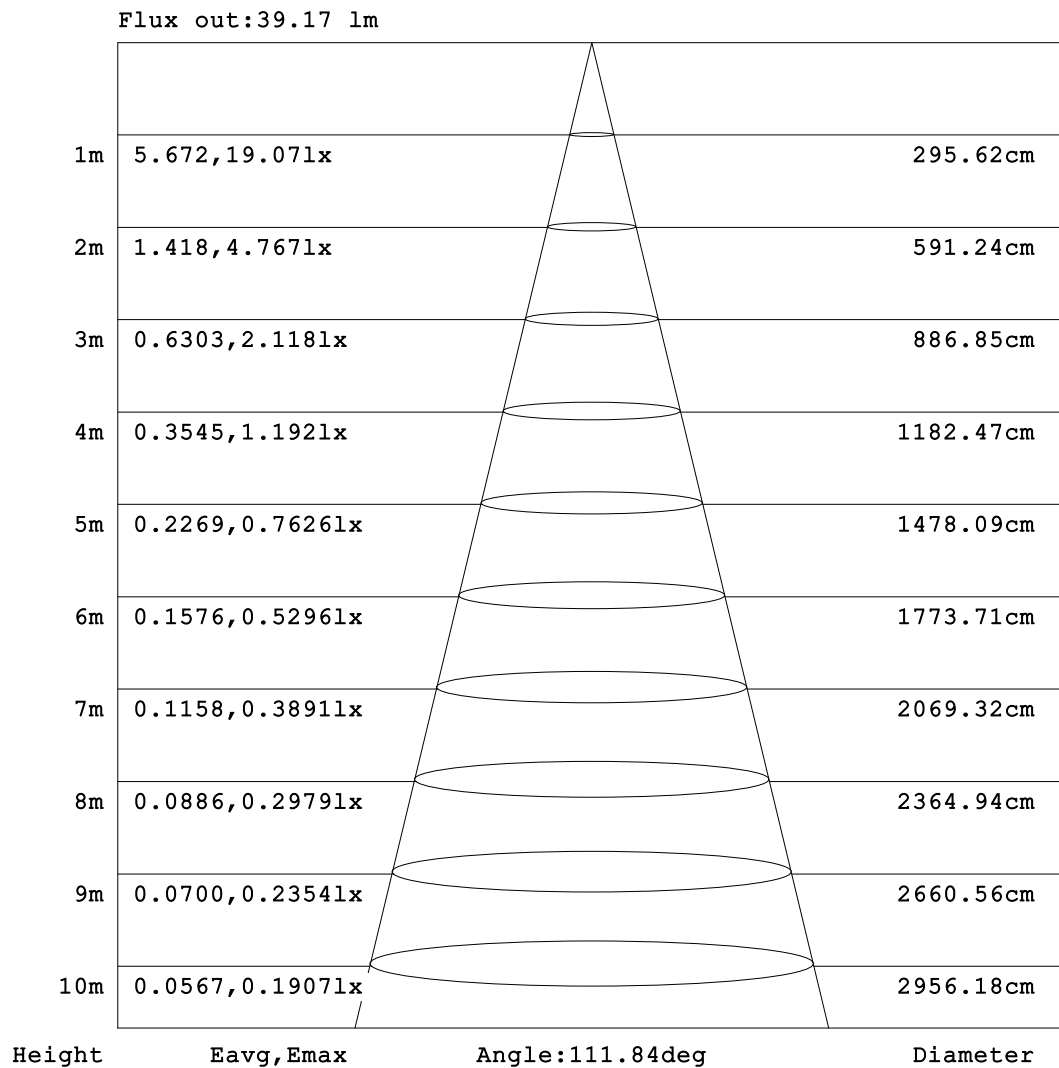


C Range: 0 - 360DEG
C Interval: 30.0DEG
Test Speed: HIGH
Temperature:25.3℃
Operators:
Test Date:2025-05-19

γ Range: 0 - 180DEG
γ Interval: 1.0DEG
Test System:EVERFINE GO-2000B_V1 SYSTEM V2.00.488
Humidity:65.0%
Test Distance:6.360m [K=1.0000]
Remarks:

AAI Figure

Test:U:24.00V I:0.5404A P:12.97W PF:1.000 Freq:0Hz Lamp Flux:57.915x1 lm		
NAME: SF28-24V-5050-72-B	TYPE:	WEIGHT:
SPEC.:	DIM.: Length=1m	SERIAL No.:
MFR.: OLympia lighting	SUR.:	Shielding Angle:



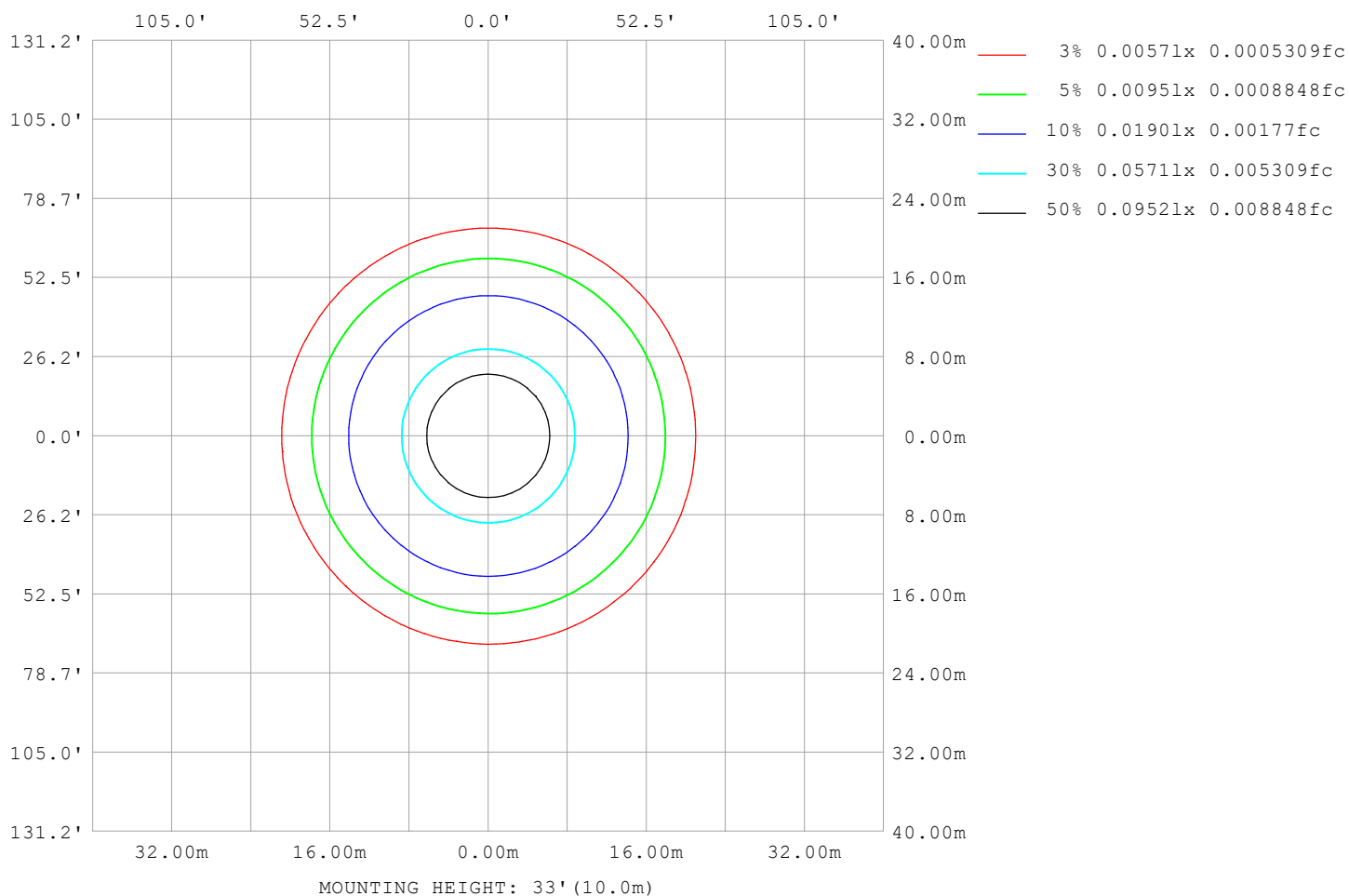
Note:The Curves indicate the illuminated area and the average illumination when the luminaire is at different distance.

C Range: 0 - 360DEG
C Interval: 30.0DEG
Test Speed: HIGH
Temperature:25.3℃
Operators:
Test Date:2025-05-19

γ Range: 0 - 180DEG
γ Interval: 1.0DEG
Test System:EVERFINE GO-2000B_V1 SYSTEM V2.00.488
Humidity:65.0%
Test Distance:6.360m [K=1.0000]
Remarks:

ISOLUX DIAGRAM

Test:U:24.00V I:0.5404A P:12.97W PF:1.000 Freq:0Hz Lamp Flux:57.915x1 lm		
NAME: SF28-24V-5050-72-B	TYPE:	WEIGHT:
SPEC.:	DIM.: Length=1m	SERIAL No.:
MFR.: OLympia lighting	SUR.:	Shielding Angle:



C Range: 0 - 360DEG
C Interval: 30.0DEG
Test Speed: HIGH
Temperature: 25.3°C
Operators:
Test Date: 2025-05-19

γ Range: 0 - 180DEG
γ Interval: 1.0DEG
Test System: EVERFINE GO-2000B_V1 SYSTEM V2.00.488
Humidity: 65.0%
Test Distance: 6.360m [K=1.0000]
Remarks:

LED Avg.L Report

Test:U:24.00V I:0.5404A P:12.97W PF:1.000 Freq:0Hz Lamp Flux:57.915x1 lm		
NAME: SF28-24V-5050-72-B	TYPE:	WEIGHT:
SPEC.:	DIM.: Length=1m	SERIAL No.:
MFR.: OLympia lighting	SUR.:	Shielding Angle:

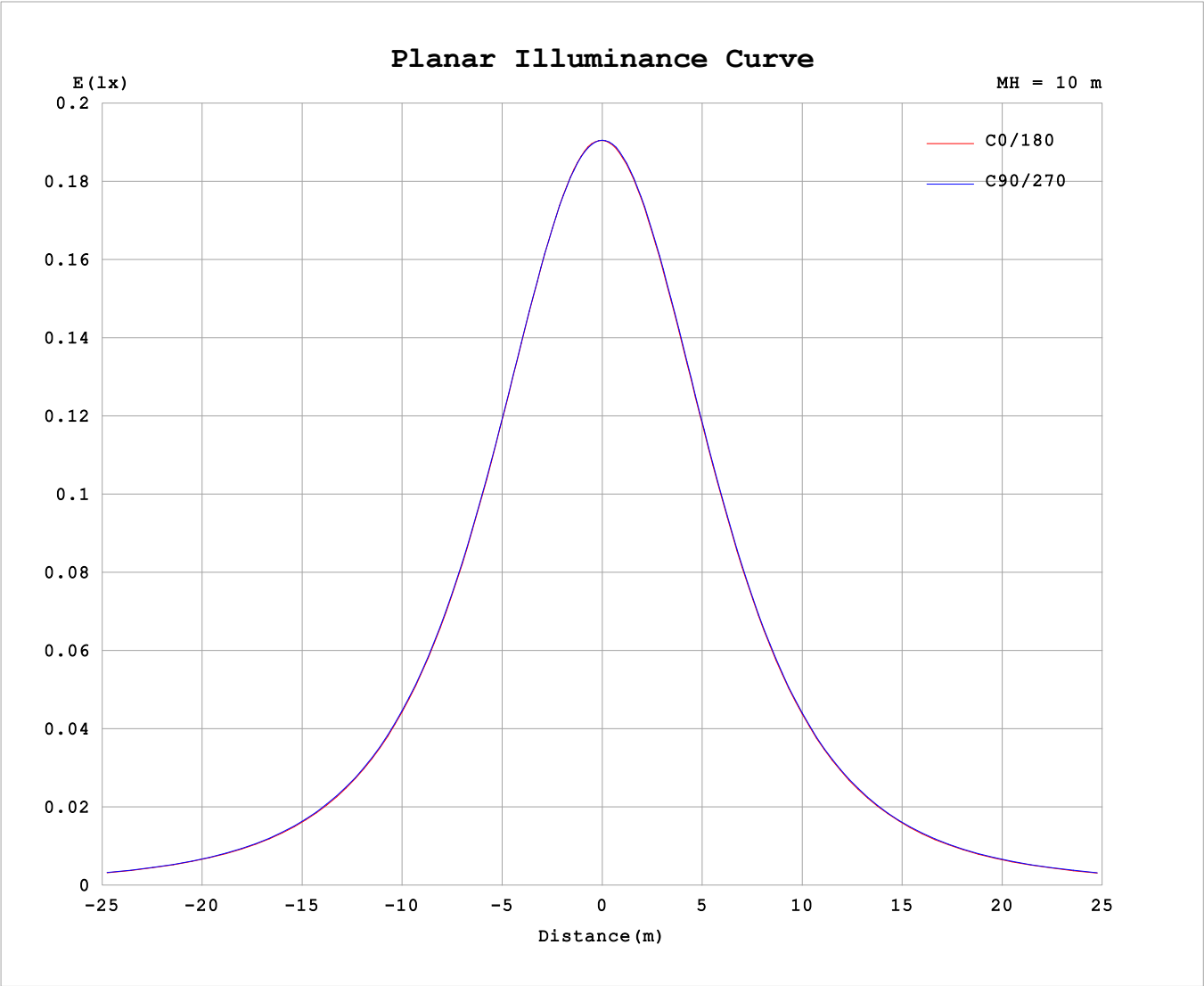
AvgL	cd/m2
L_0~180 (65) av	1000
L_0~180 (75) av	981
L_0~180 (85) av	1035
L_90~270 (65) av	1017
L_90~270 (75) av	1009
L_90~270 (85) av	1104
L_45 (65) av	1009
L_45 (75) av	992
L_45 (85) av	1062

Standard: GB/T 29293-2012

C Range: 0 - 360DEG
C Interval: 30.0DEG
Test Speed: HIGH
Temperature:25.3℃
Operators:
Test Date:2025-05-19

γ Range: 0 - 180DEG
γ Interval: 1.0DEG
Test System:EVERFINE GO-2000B_V1 SYSTEM V2.00.488
Humidity:65.0%
Test Distance:6.360m [K=1.0000]
Remarks:

Planar Illuminance Curve



C Range: 0 - 360DEG	γ Range: 0 - 180DEG
C Interval: 30.0DEG	γ Interval: 1.0DEG
Test Speed: HIGH	Test System:EVERFINE GO-2000B_V1 SYSTEM V2.00.488
Temperature:25.3℃	Humidity:65.0%
Operators:	Test Distance:6.360m [K=1.0000]
Test Date:2025-05-19	Remarks:

LUMINOUS DISTRIBUTION INTENSITY DATA

Test:U:24.00V I:0.5404A P:12.97W PF:1.000 Freq:0Hz Lamp Flux:57.915x1 lm											
NAME: SF28-24V-5050-72-B						TYPE:			WEIGHT:		
SPEC.:						DIM.: Length=1m			SERIAL No.:		
MFR.: OLYMPIA lighting						SUR.:			Shielding Angle:		

Table--1

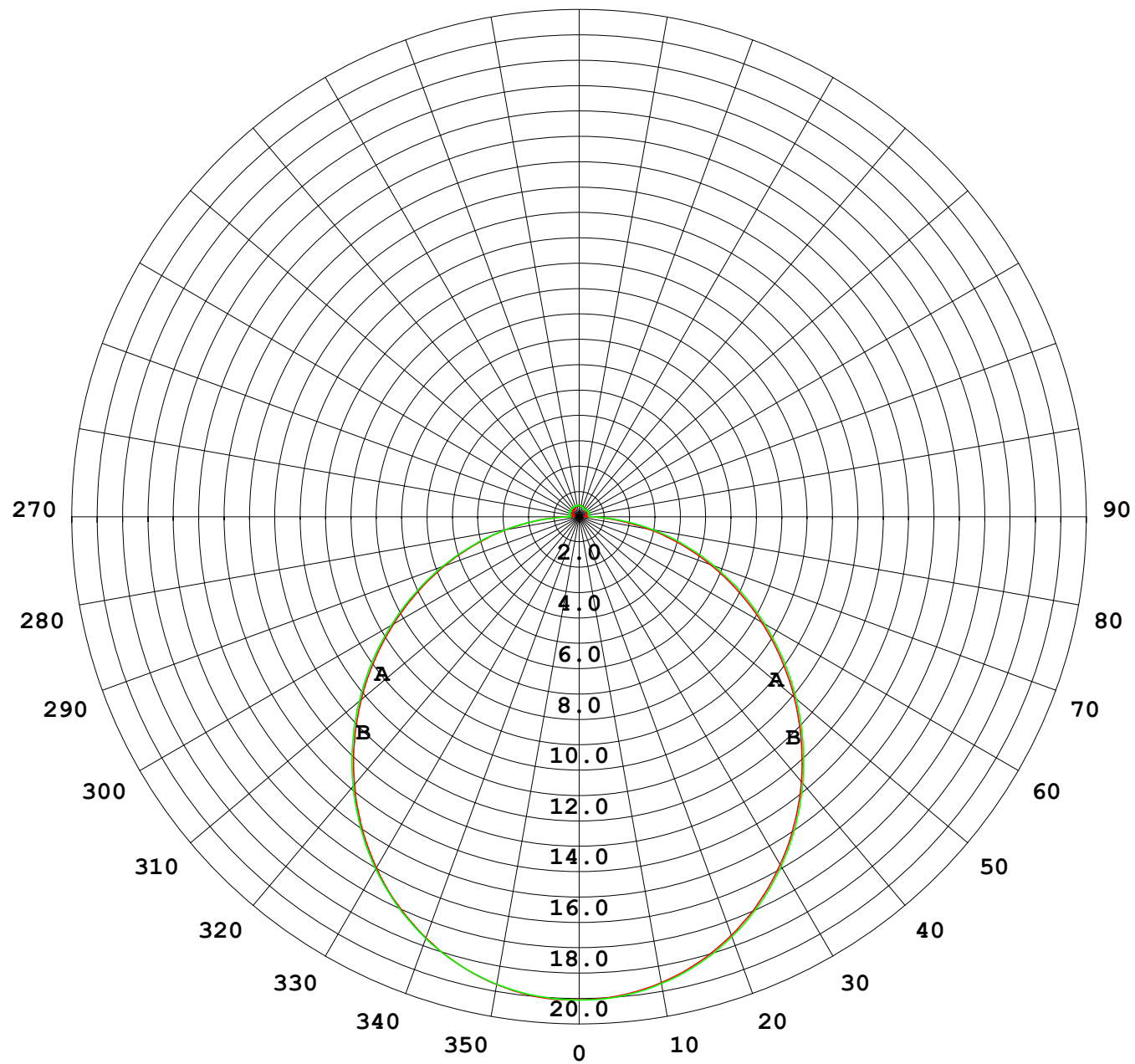
UNIT: cd

C (DEG) γ (DEG)	0	30	60	90	120	150	180	210	240	270	300	330							
0	19.1	19.1	19.1	19.1	19.1	19.1	19.1	19.1	19.1	19.1	19.1	19.1							
5	19.0	19.0	19.0	19.0	19.0	18.9	18.9	19.0	18.9	19.0	19.0	19.0							
10	18.7	18.7	18.8	18.7	18.7	18.7	18.7	18.7	18.7	18.7	18.7	18.7							
15	18.3	18.3	18.3	18.3	18.3	18.2	18.2	18.2	18.2	18.2	18.3	18.3							
20	17.7	17.7	17.7	17.7	17.7	17.6	17.6	17.6	17.6	17.6	17.7	17.7							
25	16.9	17.0	17.0	16.9	16.9	16.8	16.8	16.8	16.8	16.8	16.9	16.9							
30	16.0	16.1	16.1	16.0	16.0	15.9	15.9	15.8	15.9	15.9	16.0	16.0							
35	14.9	15.0	15.1	15.0	14.9	14.8	14.8	14.8	14.8	14.9	14.9	15.0							
40	13.8	13.9	13.9	13.9	13.8	13.7	13.6	13.6	13.7	13.7	13.8	13.8							
45	12.5	12.6	12.7	12.6	12.5	12.4	12.4	12.4	12.4	12.5	12.5	12.6							
50	11.2	11.3	11.4	11.3	11.2	11.1	11.1	11.1	11.1	11.2	11.2	11.2							
55	9.85	9.97	10.0	9.96	9.85	9.75	9.71	9.68	9.76	9.82	9.87	9.88							
60	8.45	8.57	8.60	8.56	8.45	8.34	8.31	8.29	8.36	8.44	8.49	8.48							
65	7.04	7.15	7.18	7.15	7.03	6.93	6.90	6.88	6.97	7.04	7.09	7.07							
70	5.64	5.74	5.76	5.73	5.61	5.52	5.50	5.48	5.56	5.65	5.69	5.67							
75	4.26	4.35	4.36	4.34	4.21	4.13	4.12	4.10	4.19	4.28	4.30	4.29							
80	2.91	2.98	2.98	2.95	2.83	2.76	2.74	2.74	2.83	2.93	2.94	2.93							
85	1.57	1.63	1.62	1.57	1.47	1.41	1.41	1.39	1.49	1.60	1.61	1.59							
90	0.52	0.52	0.48	0.38	0.42	0.41	0.40	0.38	0.37	0.39	0.43	0.50							
95	0.25	0.30	0.36	0.40	0.36	0.30	0.23	0.24	0.31	0.39	0.31	0.23							
100	0.25	0.31	0.36	0.41	0.36	0.31	0.23	0.23	0.33	0.39	0.32	0.22							
105	0.26	0.33	0.38	0.42	0.37	0.33	0.25	0.24	0.34	0.40	0.33	0.23							
110	0.27	0.34	0.38	0.43	0.38	0.34	0.27	0.25	0.35	0.40	0.33	0.25							
115	0.29	0.36	0.39	0.44	0.39	0.36	0.29	0.27	0.35	0.40	0.33	0.27							
120	0.31	0.37	0.40	0.44	0.40	0.37	0.30	0.28	0.35	0.41	0.33	0.28							
125	0.32	0.38	0.40	0.44	0.40	0.38	0.31	0.29	0.35	0.40	0.33	0.29							
130	0.33	0.39	0.41	0.44	0.41	0.39	0.33	0.31	0.35	0.38	0.33	0.30							
135	0.35	0.39	0.41	0.44	0.41	0.40	0.35	0.33	0.36	0.38	0.33	0.30							
140	0.36	0.40	0.42	0.45	0.42	0.41	0.36	0.34	0.36	0.36	0.35	0.32							
145	0.38	0.41	0.42	0.45	0.42	0.43	0.38	0.36	0.38	0.36	0.36	0.34							
150	0.39	0.42	0.42	0.45	0.43	0.43	0.40	0.38	0.40	0.36	0.38	0.35							
155	0.40	0.43	0.43	0.46	0.43	0.44	0.41	0.40	0.42	0.39	0.41	0.37							
160	0.41	0.44	0.44	0.46	0.44	0.45	0.42	0.41	0.43	0.41	0.42	0.38							
165	0.43	0.45	0.44	0.46	0.44	0.46	0.44	0.42	0.45	0.42	0.44	0.40							
170	0.44	0.46	0.44	0.46	0.44	0.46	0.46	0.43	0.46	0.44	0.45	0.43							
175	0.45	0.46	0.44	0.46	0.45	0.46	0.46	0.44	0.46	0.45	0.46	0.44							
180	0.45	0.46	0.45	0.46	0.45	0.46	0.46	0.45	0.46	0.45	0.46	0.45							

C Range: 0 - 360DEG
C Interval: 30.0DEG
Test Speed: HIGH
Temperature:25.3℃
Operators:
Test Date:2025-05-19

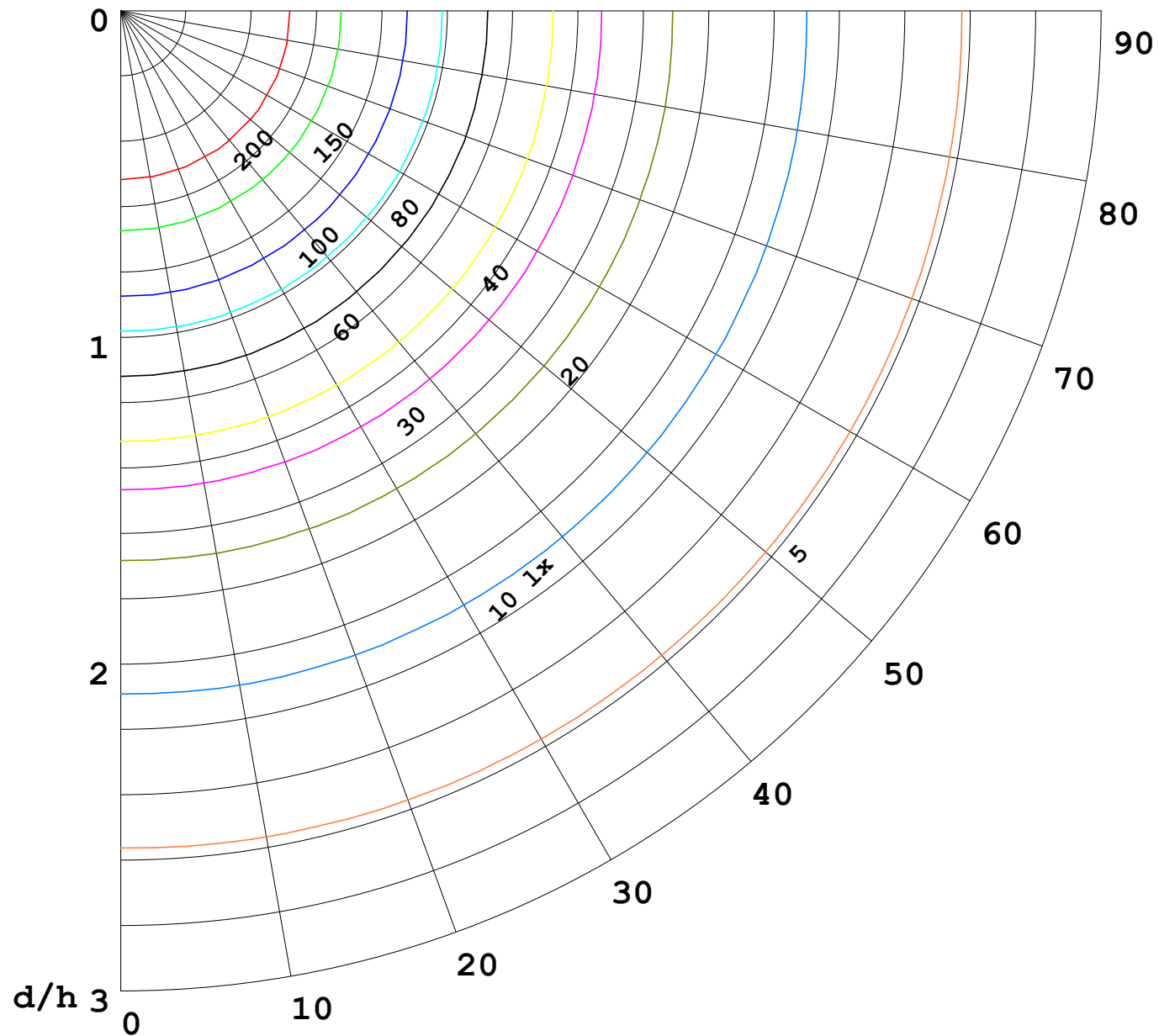
γ Range: 0 - 180DEG
γ Interval: 1.0DEG
Test System:EVERFINE GO-2000B_V1 SYSTEM V2.00.488
Humidity:65.0%
Test Distance:6.360m [K=1.0000]
Remarks:

I (cd)



1000 lm

$\kappa = 1$



F = 1000 lm
 K = 0.7
 Hcc = 0.8 m
 Hfc = 0.0 m
 Eave = 100 lx

	Pcc	Pw	Pfc
————	70	50	30
————	50	30	20

