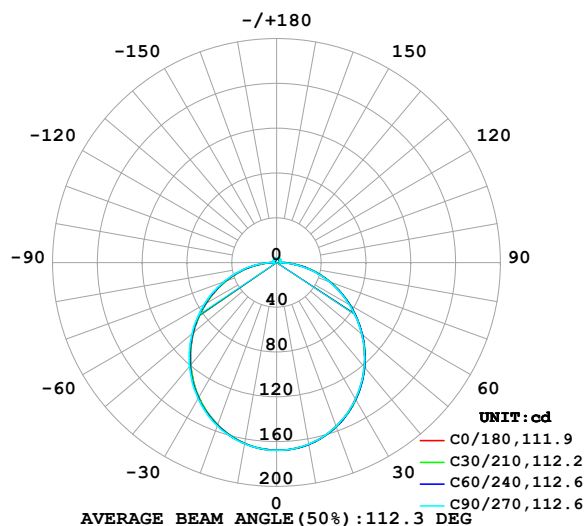


LUMINAIRE PHOTOMETRIC TEST REPORT

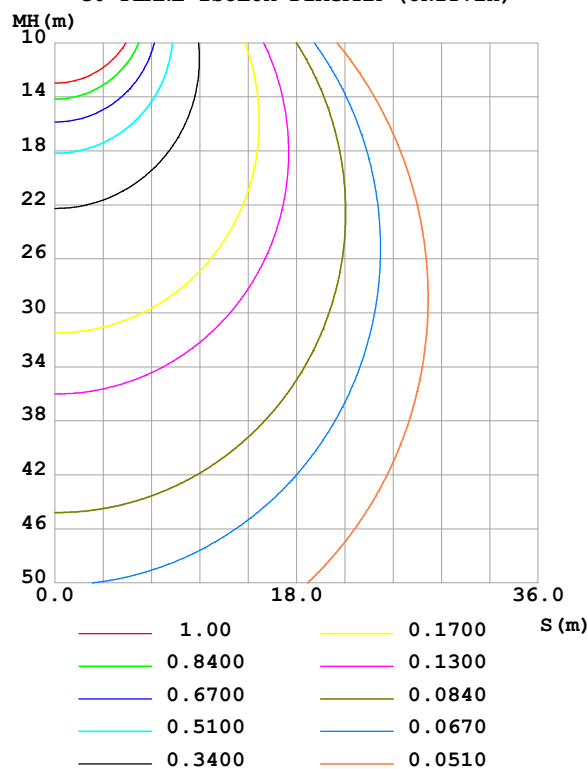
Test:U:24.00V I:0.5196A P:12.47W PF:1.000 Freq:0Hz Lamp Flux:511.073x1 lm		
NAME: SF28-24V-5050-72-2200K-80	TYPE:	WEIGHT:
SPEC.:	DIM.: Length=1m	SERIAL No.:
MFR.: OLympia lighting	SUR.:	Shielding Angle:

DATA OF LAMP		PHOTOMETRIC DATA				Eff: 40.98 lm/W
MODEL	5050	Imax (cd)	167.7	S/MH(C0/180)	1.24	
NOMINAL POWER(W)	13	LOR(%)	100.0	S/MH(C90/270)	1.24	
RATED VOLTAGE(V)	24	TOTAL FLUX(lm)	511.07	η UP,DN(C0-180)	2.1,48.1	
NOMINAL FLUX(lm)	511.073	CIE CLASS	DIRECT	η UP,DN(C180-360)	1.9,47.8	
LAMPS INSIDE	1	η up (%)	4.1	CIBSE SHR NOM	1.25	
TEST VOLTAGE(V)		η down (%)	95.9	CIBSE SHR MAX	1.35	

LUMINOUS INTENSITY DISTRIBUTION DIAGRAM



C0 PLANE ISOLUX DIAGRAM (UNIT:lx)



C Range: 0 - 360DEG
C Interval: 30.0DEG
Test Speed: HIGH
Temperature: 25.3°C
Operators:
Test Date: 2025-04-17

γ Range: 0 - 180DEG
 γ Interval: 1.0DEG
Test System: EVERFINE GO-2000B_V1 SYSTEM V2.00.488
Humidity: 65.0%
Test Distance: 6.360m [K=1.0000]
Remarks:

ZONAL FLUX DIAGRAM

ZONAL FLUX DIAGRAM:

γ	C0	C45	C90	C135	C180	C225	C270	C315	γ	Φ zone	Φ total	%lum, lamp
10	164.8	165.0	164.8	164.3	164.1	164.1	164.5	164.8	0- 10	15.86	15.86	3.1,3.1
20	155.6	156.0	155.6	154.7	154.2	154.5	155.2	155.7	10- 20	45.32	61.17	12,12
30	140.9	141.5	140.9	139.7	139.0	139.4	140.3	141.1	20- 30	68.39	129.6	25.4,25.4
40	121.8	122.4	121.7	120.3	119.5	120.0	121.0	121.9	30- 40	82.08	211.6	41.4,41.4
50	99.38	100.0	99.27	97.65	96.85	97.46	98.72	99.62	40- 50	84.99	296.6	58,58
60	75.26	75.80	74.96	73.31	72.68	73.31	74.71	75.58	50- 60	77.51	374.1	73.2,73.2
70	50.80	50.98	49.99	48.46	48.10	48.75	50.24	51.04	60- 70	61.51	435.7	85.2,85.2
80	26.79	26.56	25.16	23.96	23.91	24.55	26.01	26.94	70- 80	39.68	475.3	93,93
90	4.650	4.287	3.188	3.828	3.751	3.657	3.419	4.415	80- 90	15.01	490.3	95.9,95.9
100	2.635	3.037	3.454	3.304	2.898	2.945	3.410	2.644	90-100	3.488	493.8	96.6,96.6
110	2.560	3.144	3.639	3.239	2.565	2.884	3.604	2.721	100-110	3.181	497.0	97.2,97.2
120	2.855	3.337	3.754	3.397	2.721	3.030	3.679	2.867	110-120	3.081	500.1	97.9,97.9
130	3.117	3.491	3.818	3.531	2.959	3.141	3.676	2.993	120-130	2.921	503.0	98.4,98.4
140	3.378	3.624	3.864	3.677	3.226	3.295	3.503	3.071	130-140	2.614	505.6	98.9,98.9
150	3.631	3.761	3.948	3.829	3.525	3.513	3.491	3.297	140-150	2.212	507.8	99.4,99.4
160	3.875	3.909	4.040	3.976	3.813	3.802	3.708	3.631	150-160	1.722	509.6	99.7,99.7
170	4.079	4.079	4.127	4.116	4.071	4.071	4.025	3.950	160-170	1.116	510.7	99.9,99.9
180	4.177	4.199	4.234	4.178	4.180	4.199	4.225	4.177	170-180	0.3933	511.1	100,100
DEG	LUMINOUS INTENSITY:cd									UNIT:lm		

Conical surface Flux(90deg): 254.45 lm

%lum = 49.8%

%lamp = 49.8%

Conical surface Flux(130deg): 407.33 lm

%lum = 79.7%

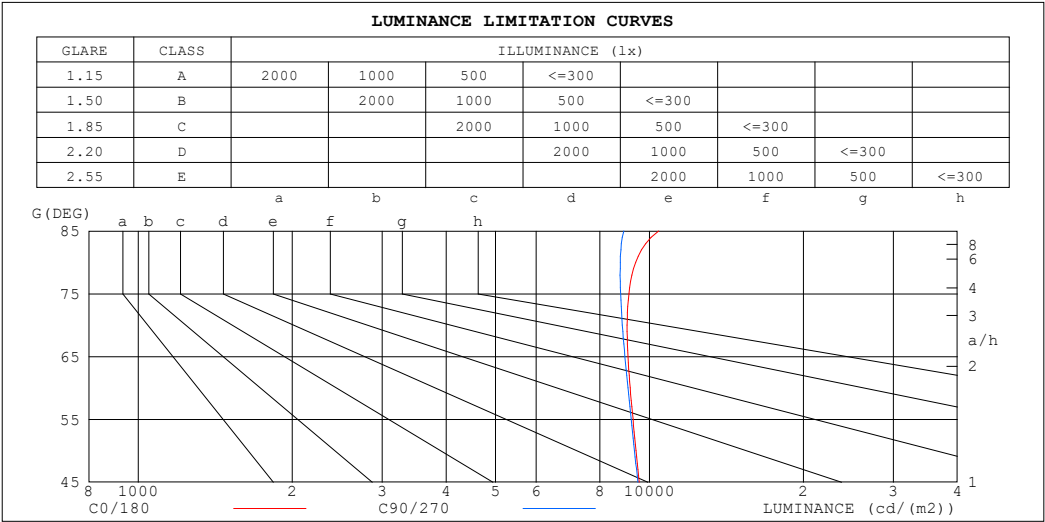
%lamp = 79.7%

C Range: 0 - 360DEG
 C Interval: 30.0DEG
 Test Speed: HIGH
 Temperature:25.3℃
 Operators:
 Test Date:2025-04-17

γ Range: 0 - 180DEG
 γ Interval: 1.0DEG
 Test System:EVERFINE GO-2000B_V1 SYSTEM V2.00.488
 Humidity:65.0%
 Test Distance:6.360m [K=1.0000]
 Remarks:

LUMINANCE LIMITATION CURVES

Test:U:24.00V I:0.5196A P:12.47W PF:1.000 Freq:0Hz Lamp Flux:511.073x1 lm		
NAME: SF28-24V-5050-72-2200K-80	TYPE:	WEIGHT:
SPEC.:	DIM.: Length=1m	SERIAL No.:
MFR.: OLympia lighting	SUR.:	Shielding Angle:



LUMINANCE cd/(m2)		
G (DEG)	C0/180	C90/270
85	10432	8906
80	9395	8770
75	9112	8785
70	9043	8846
65	9077	8953
60	9165	9074
55	9284	9208
50	9414	9348
45	9544	9486

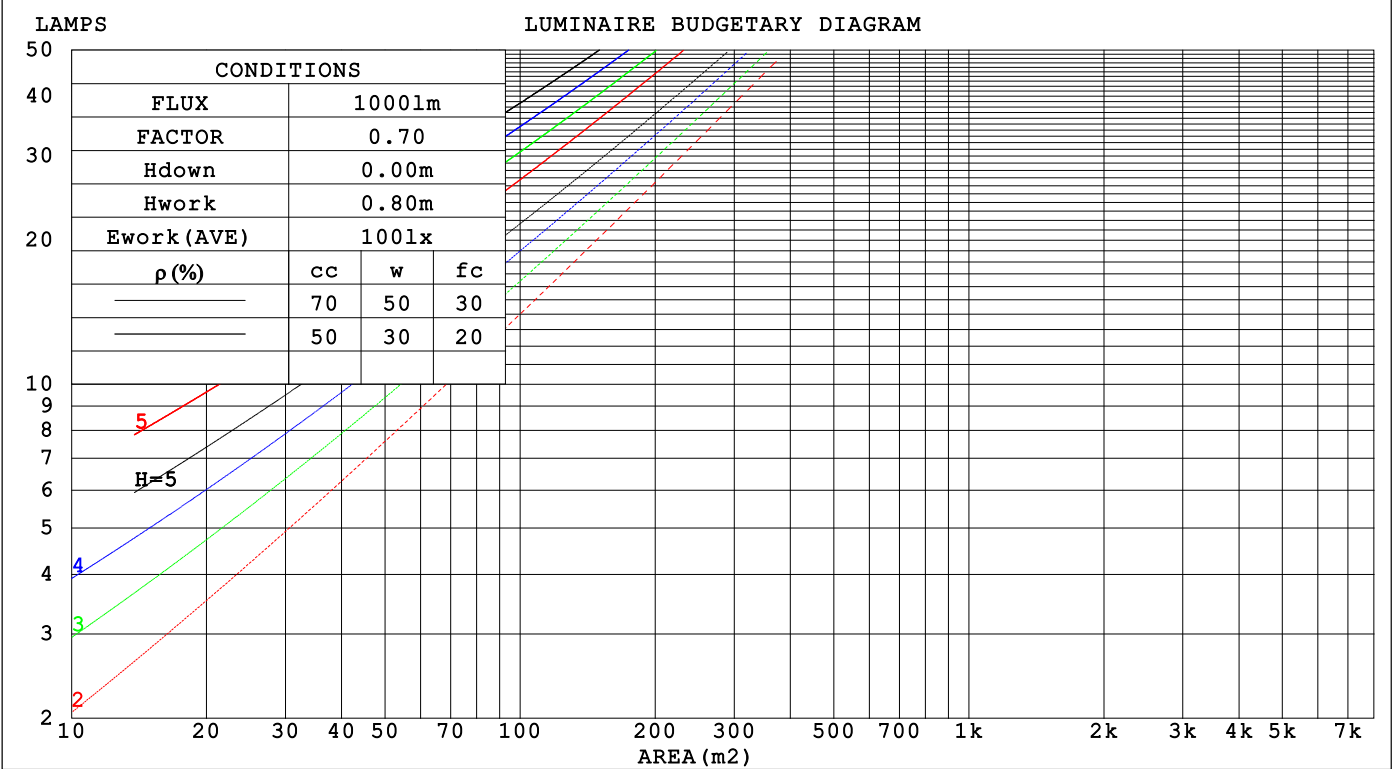
C Range: 0 - 360DEG
C Interval: 30.0DEG
Test Speed: HIGH
Temperature:25.3℃
Operators:
Test Date:2025-04-17

γ Range: 0 - 180DEG
γ Interval: 1.0DEG
Test System:EVERFINE GO-2000B_V1 SYSTEM V2.00.488
Humidity:65.0%
Test Distance:6.360m [K=1.0000]
Remarks:

CU AND LUMINAIRE BUDGETARY ESTIMATE DIAGRAM

Test:U:24.00V I:0.5196A P:12.47W PF:1.000 Freq:0Hz		
Lamp Flux:511.073x1 lm		
NAME: SF28-24V-5050-72-2200K-80	TYPE:	WEIGHT:
SPEC.:	DIM.: Length=1m	SERIAL No.:
MFR.: OLYMPIA lighting	SUR.:	Shielding Angle:

pcc	80%			70%			50%			30%			10%			0
pw	50%	30%	10%	50%	30%	10%	50%	30%	10%	50%	30%	10%	50%	30%	10%	0
pfc	20%			20%			20%			20%			20%			0
RCR	RCR:Room Cavity Ratio			Coefficients of Utilization(CU)												
0.0	1.18	1.18	1.18	1.15	1.15	1.15	1.09	1.09	1.09	1.03	1.03	1.03	.98	.98	.98	.96
1.0	1.02	.98	.94	.99	.95	.92	.94	.91	.88	.90	.87	.85	.86	.83	.81	.79
2.0	.89	.82	.76	.86	.80	.74	.82	.77	.72	.78	.74	.70	.75	.71	.68	.65
3.0	.78	.69	.63	.76	.68	.62	.72	.65	.60	.69	.63	.58	.66	.61	.57	.55
4.0	.69	.60	.53	.67	.59	.52	.64	.57	.51	.61	.55	.50	.58	.53	.49	.46
5.0	.61	.52	.45	.60	.51	.45	.57	.50	.44	.55	.48	.43	.53	.47	.42	.40
6.0	.55	.46	.39	.54	.45	.39	.52	.44	.38	.50	.43	.38	.48	.42	.37	.35
7.0	.50	.41	.35	.49	.40	.35	.47	.39	.34	.45	.38	.33	.43	.37	.33	.31
8.0	.45	.37	.31	.45	.36	.31	.43	.36	.30	.41	.35	.30	.40	.34	.29	.28
9.0	.42	.33	.28	.41	.33	.28	.39	.32	.27	.38	.32	.27	.37	.31	.27	.25
10.0	.38	.31	.25	.38	.30	.25	.37	.30	.25	.35	.29	.24	.34	.28	.24	.22



C Range: 0 - 360DEG
C Interval: 30.0DEG
Test Speed: HIGH
Temperature:25.3℃
Operators:
Test Date:2025-04-17

γ Range: 0 - 180DEG
γ Interval: 1.0DEG
Test System:EVERFINE GO-2000B_V1 SYSTEM V2.00.488
Humidity:65.0%
Test Distance:6.360m [K=1.0000]
Remarks:

WEC AND CCEC

Test:U:24.00V I:0.5196A P:12.47W PF:1.000 Freq:0Hz Lamp Flux:511.073x1 lm		
NAME: SF28-24V-5050-72-2200K-80	TYPE:	WEIGHT:
SPEC.:	DIM.: Length=1m	SERIAL No.:
MFR.: OLympia lighting	SUR.:	Shielding Angle:

pcc	80%			70%			50%			30%			10%			0														
pw	50%	30%	10%	50%	30%	10%	50%	30%	10%	50%	30%	10%	50%	30%	10%	0														
pfc	20%			20%			20%			20%			20%			0														
RCR	RCR:Room Cavity Ratio															Wall Exitance Coefficients(WEC)														
0.0																														
1.0	.325	.185	.059	.317	.181	.057	.301	.173	.055	.287	.165	.053	.273	.158	.051															
2.0	.300	.164	.050	.293	.161	.050	.279	.155	.048	.266	.149	.047	.254	.144	.045															
3.0	.275	.146	.044	.269	.144	.043	.256	.139	.042	.245	.134	.041	.234	.130	.040															
4.0	.252	.131	.039	.247	.129	.038	.235	.125	.037	.225	.121	.036	.216	.117	.036															
5.0	.232	.118	.034	.227	.117	.034	.217	.113	.033	.208	.110	.033	.199	.107	.032															
6.0	.215	.108	.031	.210	.106	.031	.201	.103	.030	.193	.100	.029	.185	.098	.029															
7.0	.200	.099	.028	.195	.097	.028	.187	.095	.027	.180	.092	.027	.173	.090	.026															
8.0	.186	.091	.026	.182	.090	.025	.175	.088	.025	.168	.085	.025	.162	.083	.024															
9.0	.174	.084	.024	.171	.083	.023	.164	.081	.023	.158	.079	.023	.152	.077	.022															
10.0	.164	.079	.022	.161	.078	.022	.155	.076	.021	.149	.074	.021	.144	.072	.021															

pcc	80%			70%			50%			30%			10%			0
pw	50%	30%	10%	50%	30%	10%	50%	30%	10%	50%	30%	10%	50%	30%	10%	0
pfc	20%			20%			20%			20%			20%			0
RCR	RCR:Room Cavity Ratio						Ceiling Cavity Exitance Coefficients (CCEC)									
0.0	.221	.221	.221	.189	.189	.189	.129	.129	.129	.074	.074	.074	.024	.024	.024	
1.0	.213	.187	.164	.182	.161	.141	.124	.111	.098	.072	.064	.057	.023	.021	.018	
2.0	.205	.163	.128	.175	.141	.111	.120	.097	.077	.069	.057	.045	.022	.018	.015	
3.0	.197	.146	.105	.169	.126	.091	.116	.087	.064	.067	.051	.038	.022	.017	.012	
4.0	.189	.133	.090	.162	.115	.078	.112	.080	.055	.065	.047	.032	.021	.015	.011	
5.0	.182	.122	.079	.156	.106	.068	.108	.074	.048	.062	.043	.029	.020	.014	.009	
6.0	.175	.114	.071	.150	.099	.062	.104	.069	.044	.060	.041	.026	.019	.013	.009	
7.0	.168	.107	.065	.144	.093	.057	.100	.065	.040	.058	.038	.024	.019	.013	.008	
8.0	.161	.102	.061	.139	.088	.053	.096	.062	.038	.056	.036	.022	.018	.012	.007	
9.0	.155	.097	.057	.134	.084	.050	.093	.059	.035	.054	.035	.021	.017	.011	.007	
10.0	.149	.092	.055	.129	.080	.048	.089	.056	.034	.052	.033	.020	.017	.011	.007	

C Range: 0 - 360DEG
C Interval: 30.0DEG
Test Speed: HIGH
Temperature:25.3℃
Operators:
Test Date:2025-04-17

γ Range: 0 - 180DEG
γ Interval: 1.0DEG
Test System:EVERFINE GO-2000B_V1 SYSTEM V2.00.488
Humidity:65.0%
Test Distance:6.360m [K=1.0000]
Remarks:

UGR(Unified Glare Rating) Table

Test:U:24.00V I:0.5196A P:12.47W PF:1.000 Freq:0Hz Lamp Flux:511.073x1 lm										
NAME: SF28-24V-5050-72-2200K-80					TYPE:			WEIGHT:		
SPEC.:					DIM.: Length=1m			SERIAL No.:		
MFR.: OLympia lighting					SUR.:			Shielding Angle:		
ceiling/cavity	0.7	0.7	0.5	0.5	0.3	0.7	0.7	0.5	0.5	0.3
walls	0.5	0.3	0.5	0.3	0.3	0.5	0.3	0.5	0.3	0.3
working plane	0.2	0.2	0.2	0.2	0.2	0.2	0.2	0.2	0.2	0.2
Room dimensions	Viewed crosswise					Viewed endwise				
x = 2H y = 2H	---	---	---	---	---	---	---	---	---	---
3H	---	---	---	---	---	---	---	---	---	---
4H	---	---	---	---	---	---	---	---	---	---
6H	---	---	---	---	---	---	---	---	---	---
8H	---	---	---	---	---	---	---	---	---	---
12H	---	---	---	---	---	---	---	---	---	---
4H 2H	---	---	---	---	---	---	---	---	---	---
3H	---	---	---	---	---	---	---	---	---	---
4H	---	---	---	---	---	---	---	---	---	---
6H	---	---	---	---	---	---	---	---	---	---
8H	---	---	---	---	---	---	---	---	---	---
12H	---	---	---	---	---	---	---	---	---	---
8H 4H	---	---	---	---	---	---	---	---	---	---
6H	---	---	---	---	---	---	---	---	---	---
8H	---	---	---	---	---	---	---	---	---	---
12H	---	---	---	---	---	---	---	---	---	---
12H 4H	---	---	---	---	---	---	---	---	---	---
6H	---	---	---	---	---	---	---	---	---	---
8H	---	---	---	---	---	---	---	---	---	---
Variations with the observer position at spacings(CIE Pub.117):										
S = 1.0H	+ 0.0 / - 0.0					+ 0.0 / - 0.0				
1.5H	+ 0.0 / - 0.0					+ 0.0 / - 0.0				
2.0H	+ 0.0 / - 0.0					+ 0.0 / - 0.0				

CIE Pub.117, 511.1 lm Total Lamp Luminous Flux Correct (8log(F/F0) = -2.3)
Area: 0.0165 m2

C Range: 0 - 360DEG
C Interval: 30.0DEG
Test Speed: HIGH
Temperature:25.3℃
Operators:
Test Date:2025-04-17

γ Range: 0 - 180DEG
γ Interval: 1.0DEG
Test System:EVERFINE GO-2000B_V1 SYSTEM V2.00.488
Humidity:65.0%
Test Distance:6.360m [K=1.0000]
Remarks:

UTILIZATION FACTORS TABLE

Test:U:24.00V I:0.5196A P:12.47W PF:1.000 Freq:0Hz Lamp Flux:511.073x1 lm		
NAME: SF28-24V-5050-72-2200K-80	TYPE:	WEIGHT:
SPEC.:	DIM.: Length=1m	SERIAL No.:
MFR.: OLympia lighting	SUR.:	Shielding Angle:

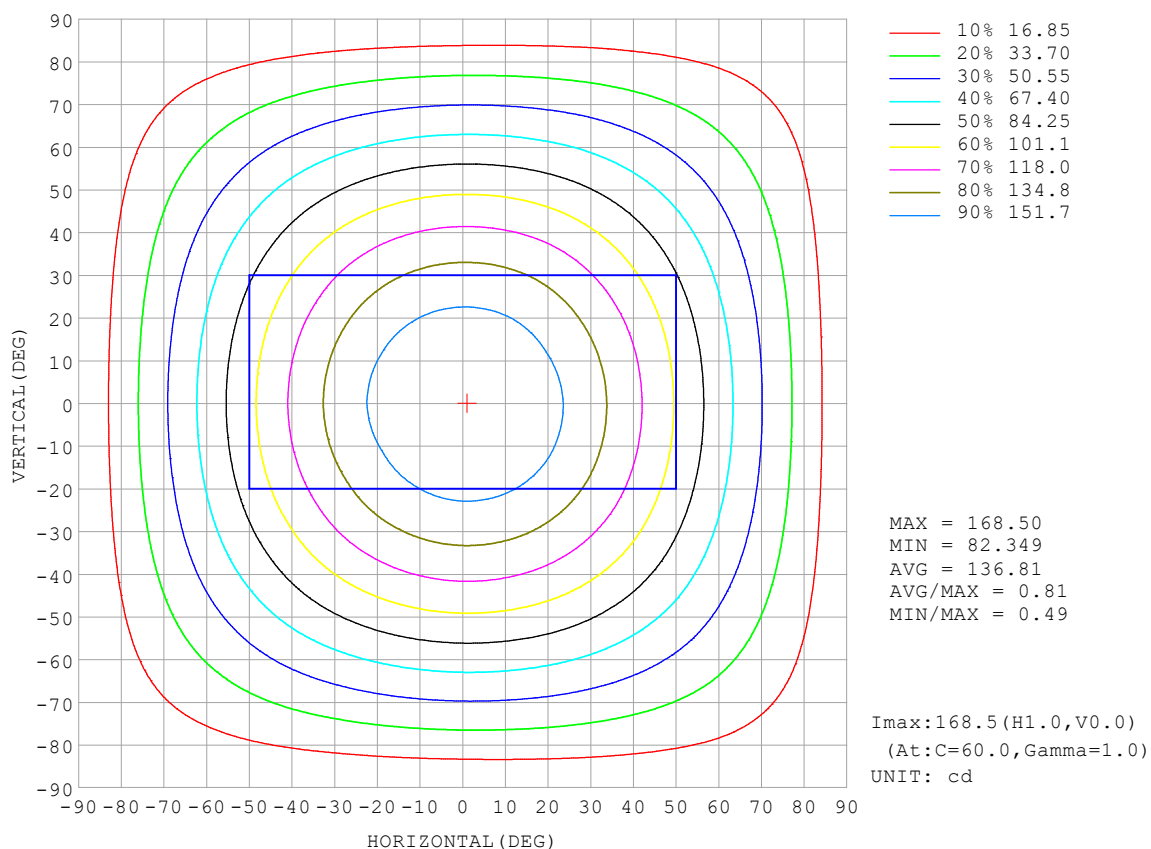
REFLECTANCE										
Ceiling	0.8	0.8	0.8	0.7	0.7	0.7	0.5	0.5	0.5	0
Walls	0.7	0.5	0.3	0.7	0.5	0.3	0.7	0.5	0.3	0
Working plane	0.2	0.2	0.2	0.2	0.2	0.2	0.2	0.2	0.2	0
ROOM INDEX	UTILIZATION FACTORS (PERCENT) $k(RI) \times RCR = 5$									
$k = 0.60$	56	44	37	55	44	37	53	43	37	30
0.80	65	54	46	64	53	46	62	52	45	38
1.00	74	62	55	72	62	54	70	63	54	46
1.25	81	70	62	79	69	62	76	67	61	53
1.50	86	75	68	84	74	67	80	72	66	58
2.00	93	84	77	91	82	76	86	80	74	65
2.50	97	88	82	94	87	81	90	84	79	69
3.00	100	93	87	98	91	86	93	88	83	73
4.00	104	98	93	102	96	92	97	92	88	78
5.00	107	102	97	104	99	95	99	95	92	81
ROOM INDEX	UF (total)									Direct
According to DIN EN 13032-2 2004			Suspended					SHRNOM = 1.25		

C Range: 0 - 360DEG
 C Interval: 30.0DEG
 Test Speed: HIGH
 Temperature: 25.3°C
 Operators:
 Test Date: 2025-04-17

γ Range: 0 - 180DEG
 γ Interval: 1.0DEG
 Test System: EVERFINE GO-2000B_V1 SYSTEM V2.00.488
 Humidity: 65.0%
 Test Distance: 6.360m [K=1.0000]
 Remarks:

ISOCANDELA DIAGRAM

Test:U:24.00V I:0.5196A P:12.47W PF:1.000 Freq:0Hz Lamp Flux:511.073x1 lm		
NAME: SF28-24V-5050-72-2200K-80	TYPE:	WEIGHT:
SPEC.:	DIM.: Length=1m	SERIAL No.:
MFR.: OLympia lighting	SUR.:	Shielding Angle:

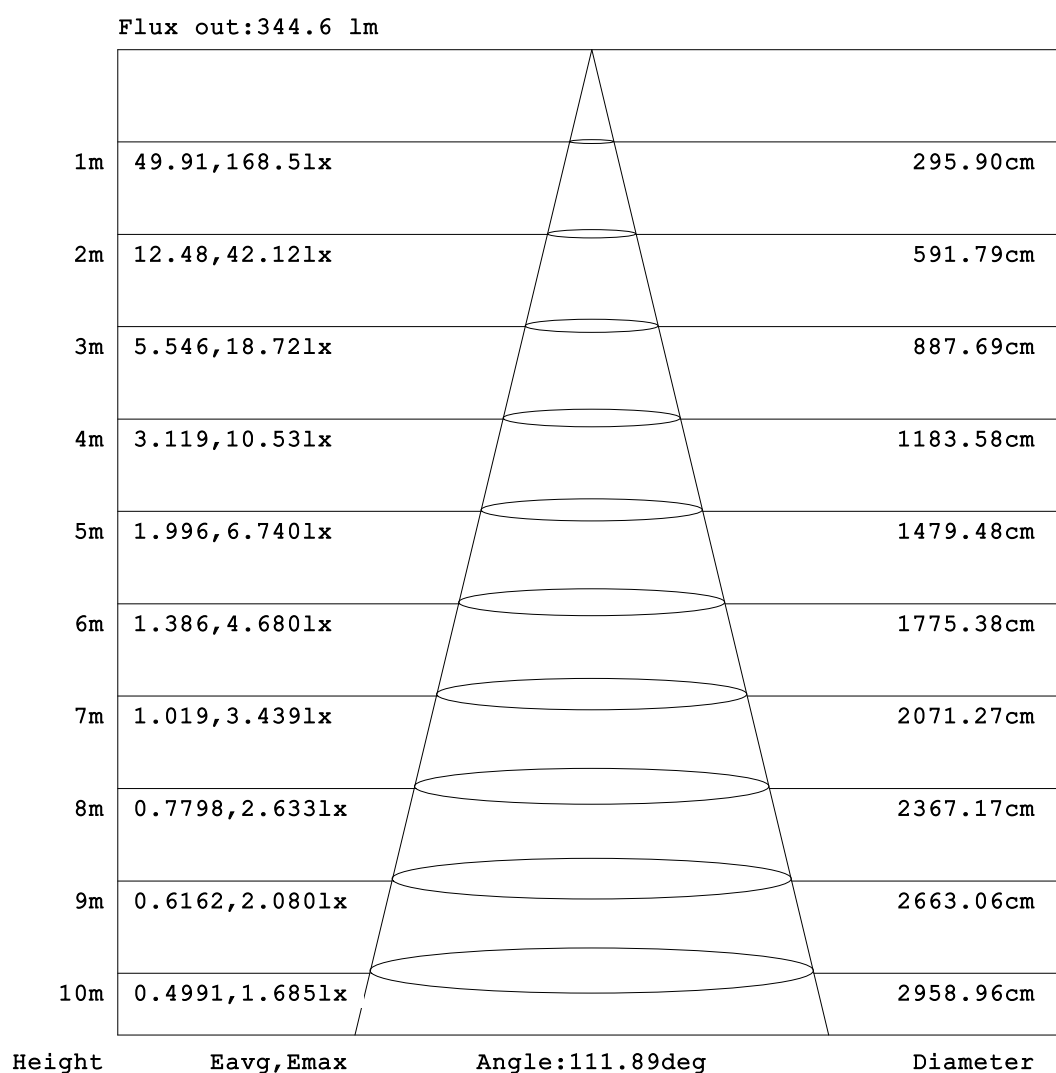


C Range: 0 - 360DEG
C Interval: 30.0DEG
Test Speed: HIGH
Temperature:25.3℃
Operators:
Test Date:2025-04-17

γ Range: 0 - 180DEG
γ Interval: 1.0DEG
Test System:EVERFINE GO-2000B_V1 SYSTEM V2.00.488
Humidity:65.0%
Test Distance:6.360m [K=1.0000]
Remarks:

AAI Figure

Test:U:24.00V I:0.5196A P:12.47W PF:1.000 Freq:0Hz Lamp Flux:511.073lx 1m		
NAME: SF28-24V-5050-72-2200K-80	TYPE:	WEIGHT:
SPEC.:	DIM.: Length=1m	SERIAL No.:
MFR.: OLympia lighting	SUR.:	Shielding Angle:



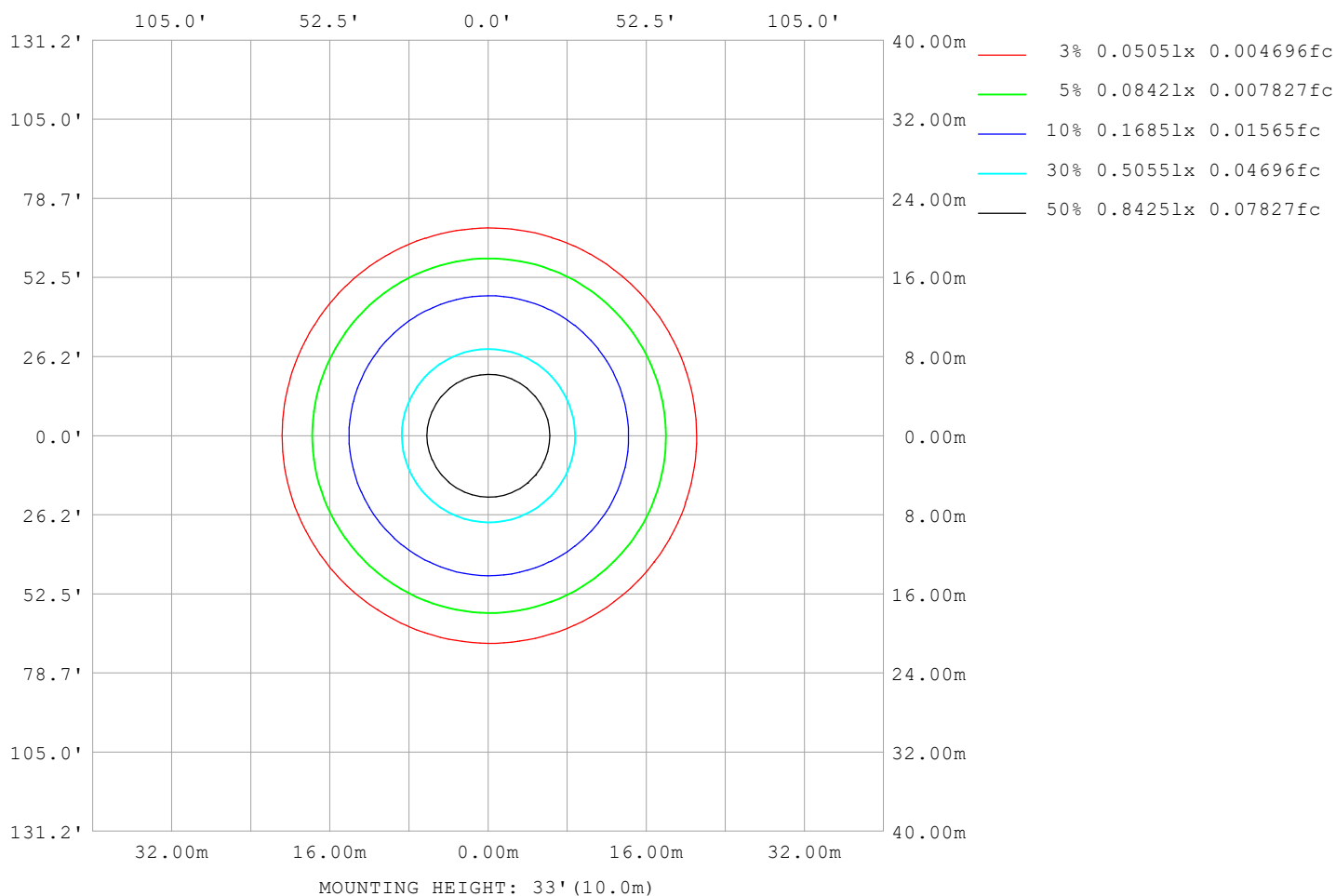
Note: The Curves indicate the illuminated area and the average illumination when the luminaire is at different distance.

C Range: 0 - 360DEG
C Interval: 30.0DEG
Test Speed: HIGH
Temperature: 25.3°C
Operators:
Test Date: 2025-04-17

γ Range: 0 - 180DEG
γ Interval: 1.0DEG
Test System: EVERFINE GO-2000B_V1 SYSTEM V2.00.488
Humidity: 65.0%
Test Distance: 6.360m [K=1.0000]
Remarks:

ISOLUX DIAGRAM

Test:U:24.00V I:0.5196A P:12.47W PF:1.000 Freq:0Hz Lamp Flux:511.073x1 lm		
NAME: SF28-24V-5050-72-2200K-80	TYPE:	WEIGHT:
SPEC.:	DIM.: Length=1m	SERIAL No.:
MFR.: OLympia lighting	SUR.:	Shielding Angle:



C Range: 0 - 360DEG
C Interval: 30.0DEG
Test Speed: HIGH
Temperature: 25.3°C
Operators:
Test Date: 2025-04-17

γ Range: 0 - 180DEG
γ Interval: 1.0DEG
Test System: EVERFINE GO-2000B_V1 SYSTEM V2.00.488
Humidity: 65.0%
Test Distance: 6.360m [K=1.0000]
Remarks:

LED Avg.L Report

Test:U:24.00V I:0.5196A P:12.47W PF:1.000 Freq:0Hz Lamp Flux:511.073x1 lm		
NAME: SF28-24V-5050-72-2200K-80	TYPE:	WEIGHT:
SPEC.:	DIM.: Length=1m	SERIAL No.:
MFR.: OLympia lighting	SUR.:	Shielding Angle:

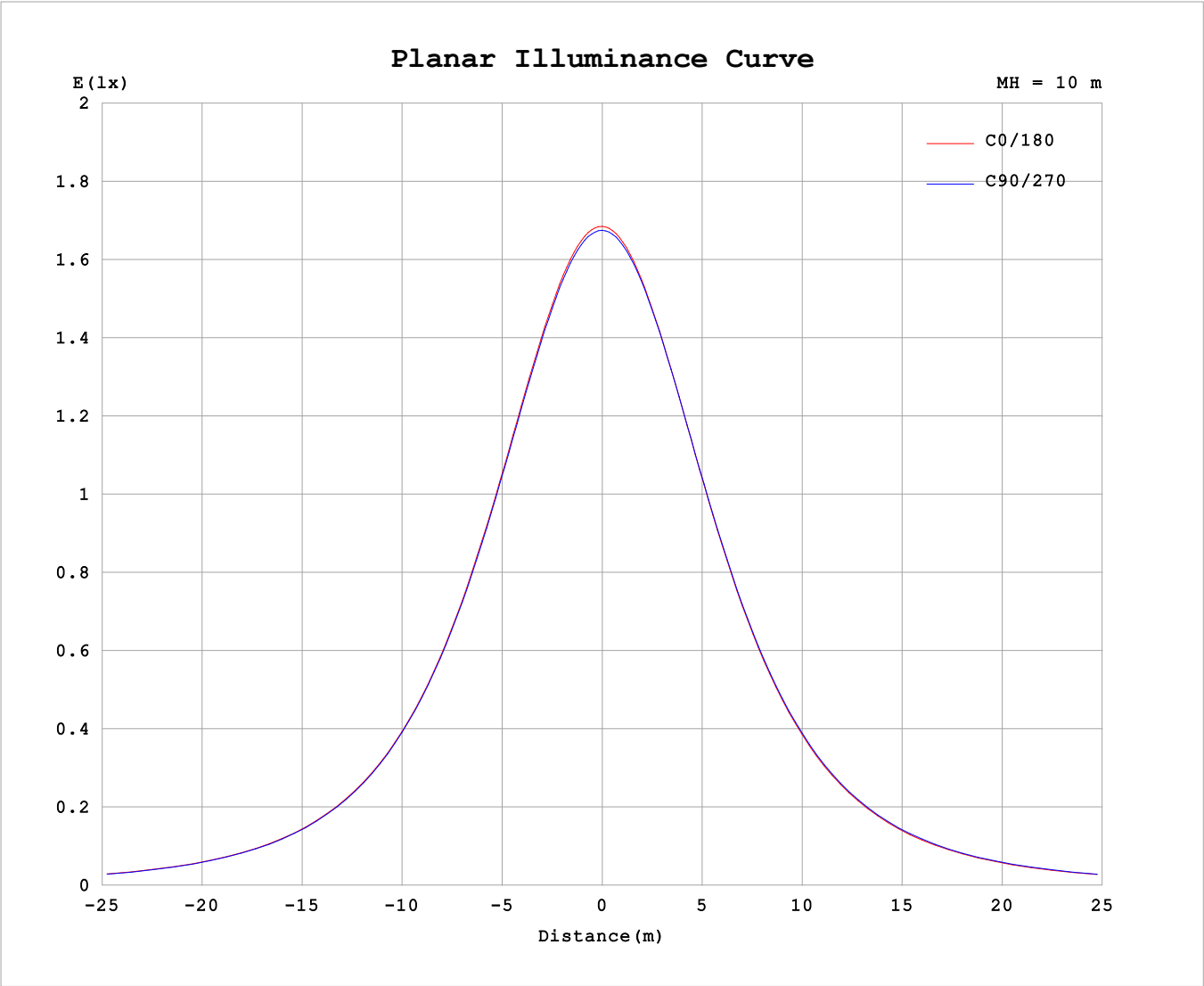
AvgL	cd/m2
L_0~180 (65) av	8848
L_0~180 (75) av	8743
L_0~180 (85) av	9363
L_90~270 (65) av	8962
L_90~270 (75) av	8855
L_90~270 (85) av	9293
L_45 (65) av	8915
L_45 (75) av	8802
L_45 (85) av	9416

Standard: GB/T 29293-2012

C Range: 0 - 360DEG
C Interval: 30.0DEG
Test Speed: HIGH
Temperature:25.3℃
Operators:
Test Date:2025-04-17

γ Range: 0 - 180DEG
γ Interval: 1.0DEG
Test System:EVERFINE GO-2000B_V1 SYSTEM V2.00.488
Humidity:65.0%
Test Distance:6.360m [K=1.0000]
Remarks:

Planar Illuminance Curve



C Range: 0 - 360DEG	γ Range: 0 - 180DEG
C Interval: 30.0DEG	γ Interval: 1.0DEG
Test Speed: HIGH	Test System:EVERFINE GO-2000B_V1 SYSTEM V2.00.488
Temperature:25.3℃	Humidity:65.0%
Operators:	Test Distance:6.360m [K=1.0000]
Test Date:2025-04-17	Remarks:

LUMINOUS DISTRIBUTION INTENSITY DATA

Test:U:24.00V I:0.5196A P:12.47W PF:1.000 Freq:0Hz Lamp Flux:511.073x1 lm		
NAME: SF28-24V-5050-72-2200K-80	TYPE:	WEIGHT:
SPEC.:	DIM.: Length=1m	SERIAL No.:
MFR.: OLYMPIA lighting	SUR.:	Shielding Angle:

Table--1

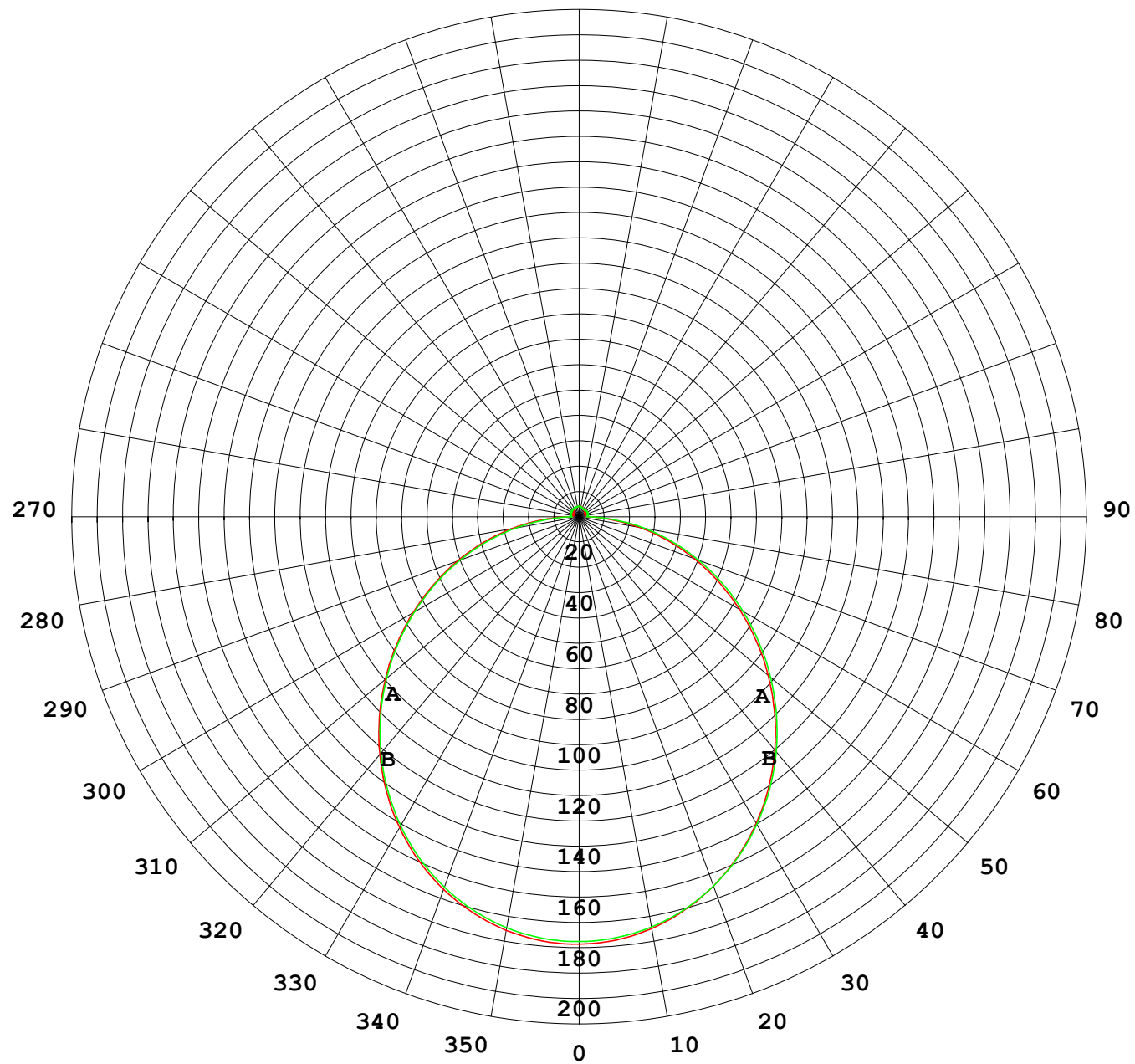
UNIT: cd

C (DEG) γ (DEG)	0	30	60	90	120	150	180	210	240	270	300	330							
0	168	168	168	168	168	168	168	168	168	168	168	168							
5	167	167	167	167	167	167	167	167	167	167	167	167							
10	165	165	165	165	164	164	164	164	164	164	164	165							
15	161	161	161	161	160	160	160	160	160	161	161	161							
20	156	156	156	156	155	154	154	154	155	155	156	156							
25	149	149	149	149	148	148	147	147	148	148	149	149							
30	141	142	141	141	140	139	139	139	140	140	141	141							
35	132	132	132	132	131	130	130	130	131	131	132	132							
40	122	122	122	122	121	120	119	120	120	121	122	122							
45	111	112	111	111	110	109	108	109	109	110	111	111							
50	99.4	100	100.0	99.3	98.1	97.2	96.9	97.0	97.9	98.7	99.6	99.7							
55	87.5	88.1	88.0	87.3	86.0	85.2	84.9	85.0	86.0	86.8	87.7	87.8							
60	75.3	75.9	75.7	75.0	73.7	72.9	72.7	72.8	73.8	74.7	75.6	75.6							
65	63.0	63.5	63.3	62.5	61.3	60.5	60.4	60.5	61.6	62.5	63.3	63.3							
70	50.8	51.2	50.8	50.0	48.8	48.1	48.1	48.2	49.3	50.2	51.0	51.1							
75	38.7	39.0	38.4	37.6	36.4	35.9	35.9	36.1	37.1	38.1	38.8	39.0							
80	26.8	27.0	26.2	25.2	24.1	23.8	23.9	24.0	25.1	26.0	26.8	27.0							
85	14.9	15.0	14.1	12.8	12.0	11.8	12.0	12.1	13.1	13.9	15.0	15.2							
90	4.65	4.63	3.94	3.19	3.73	3.93	3.75	3.57	3.75	3.42	4.29	4.54							
95	2.76	3.00	3.24	3.33	3.46	3.48	3.12	3.00	3.23	3.28	2.96	2.50							
100	2.63	2.88	3.20	3.45	3.33	3.27	2.90	2.78	3.11	3.41	2.93	2.36							
105	2.56	2.83	3.29	3.56	3.34	3.12	2.71	2.61	3.17	3.52	3.02	2.29							
110	2.56	2.91	3.38	3.64	3.43	3.04	2.57	2.52	3.25	3.60	3.12	2.32							
115	2.71	3.03	3.46	3.70	3.48	3.13	2.59	2.59	3.30	3.66	3.13	2.45							
120	2.86	3.14	3.54	3.75	3.56	3.24	2.72	2.70	3.36	3.68	3.15	2.58							
125	3.00	3.23	3.59	3.79	3.62	3.32	2.85	2.81	3.37	3.68	3.15	2.69							
130	3.12	3.33	3.65	3.82	3.68	3.38	2.96	2.92	3.37	3.68	3.16	2.83							
135	3.25	3.43	3.69	3.84	3.73	3.48	3.08	3.06	3.37	3.59	3.16	2.81							
140	3.38	3.52	3.73	3.86	3.78	3.57	3.23	3.21	3.38	3.50	3.18	2.96							
145	3.50	3.60	3.78	3.90	3.84	3.67	3.37	3.36	3.43	3.45	3.24	3.11							
150	3.63	3.69	3.84	3.95	3.89	3.76	3.53	3.51	3.52	3.49	3.34	3.26							
155	3.76	3.78	3.88	4.00	3.95	3.86	3.67	3.66	3.65	3.58	3.57	3.42							
160	3.88	3.88	3.94	4.04	4.00	3.96	3.81	3.81	3.80	3.71	3.68	3.58							
165	3.99	3.99	4.00	4.08	4.04	4.06	3.94	3.94	3.95	3.86	3.82	3.73							
170	4.08	4.09	4.07	4.13	4.10	4.13	4.07	4.05	4.09	4.03	3.98	3.92							
175	4.14	4.16	4.16	4.21	4.17	4.16	4.15	4.13	4.19	4.16	4.13	4.04							
180	4.18	4.19	4.21	4.23	4.20	4.16	4.18	4.18	4.22	4.23	4.21	4.14							

C Range: 0 - 360DEG
C Interval: 30.0DEG
Test Speed: HIGH
Temperature:25.3℃
Operators:
Test Date:2025-04-17

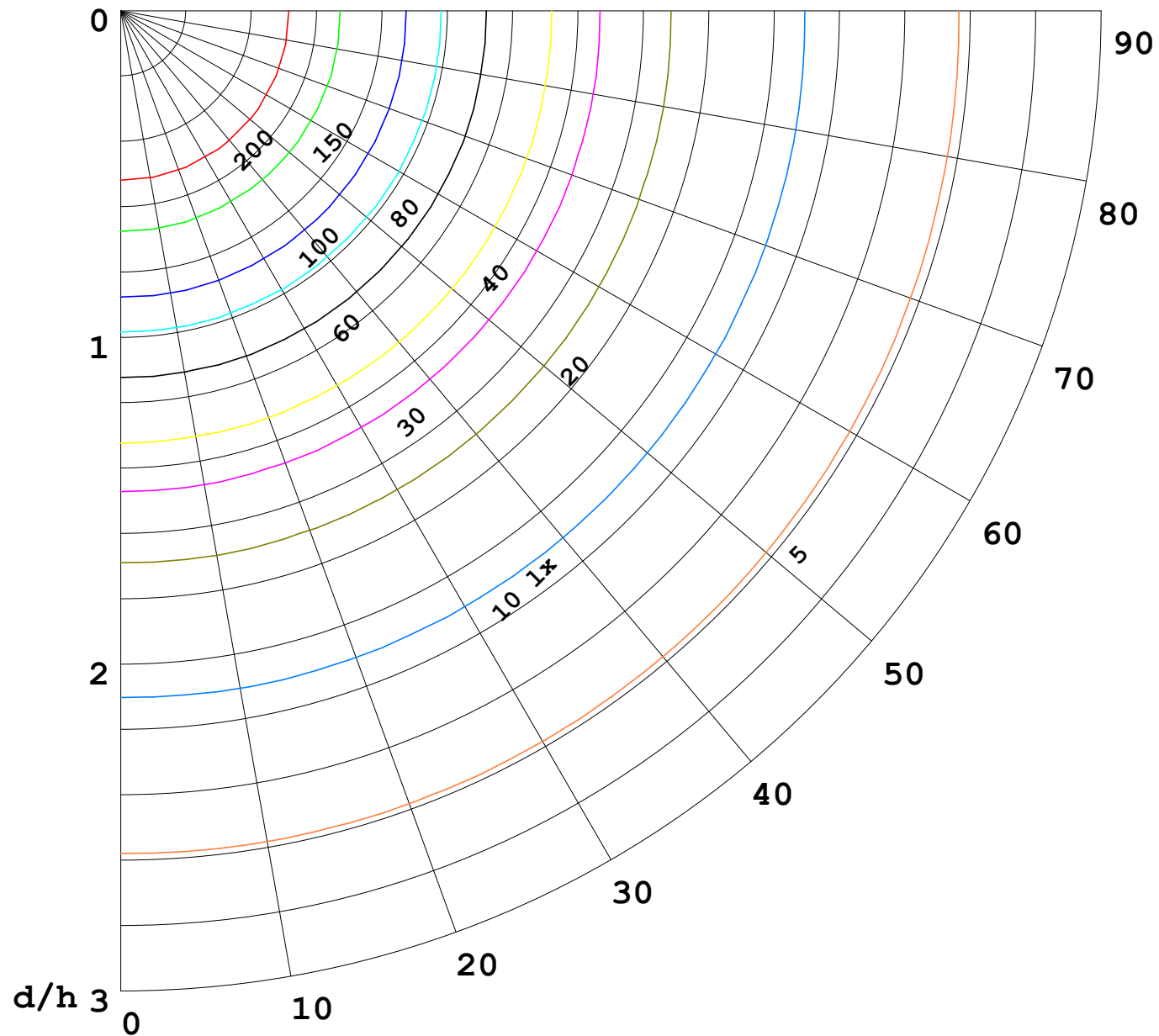
γ Range: 0 - 180DEG
γ Interval: 1.0DEG
Test System:EVERFINE GO-2000B_V1 SYSTEM V2.00.488
Humidity:65.0%
Test Distance:6.360m [K=1.0000]
Remarks:

I (cd)



1000 lm

$\kappa = 1$



F = 1000 lm
 K = 0.7
 Hcc = 0.8 m
 Hfc = 0.0 m
 Eave = 100 lx

	Pcc	Pw	Pfc
—————	70	50	30
—————	50	30	20

