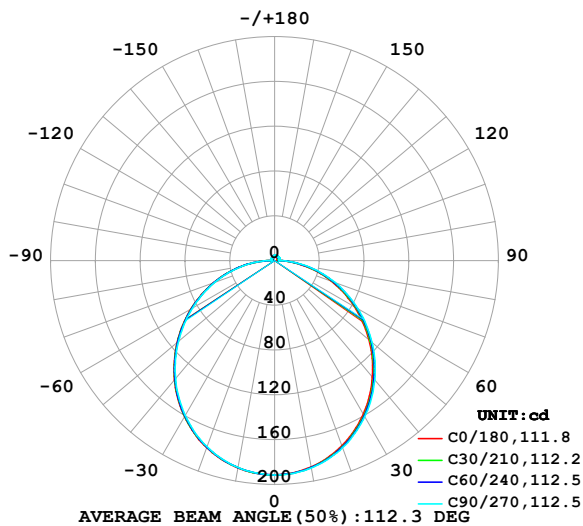


## LUMINAIRE PHOTOMETRIC TEST REPORT

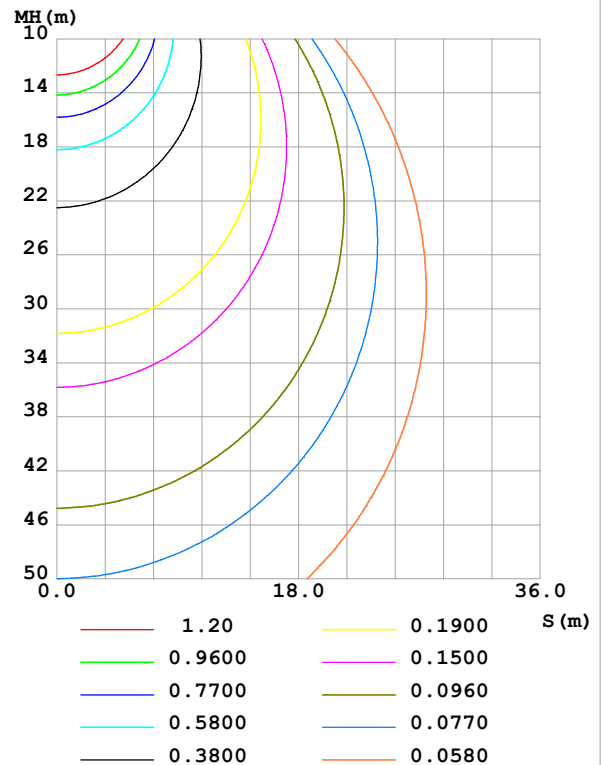
Test:U:24.00V I:0.5309A P:12.74W PF:1.000 Freq:0Hz Lamp Flux:582.14x1 lm		
NAME: SF28-24V-5050-72-4500	TYPE:	WEIGHT:
SPEC.:	DIM.: Length=1m	SERIAL No.:
MFR.: OLympia lighting	SUR.:	Shielding Angle:

DATA OF LAMP		PHOTOMETRIC DATA Eff: 45.69 lm/W			
MODEL	5050	I <sub>max</sub> (cd)	191.5	S/MH(C0/180)	1.25
NOMINAL POWER(W)	13	LOR(%)	100.0	S/MH(C90/270)	1.24
RATED VOLTAGE(V)	24	TOTAL FLUX(lm)	582.14	η UP,DN(C0-180)	2.2,48.0
NOMINAL FLUX(lm)	582.14	CIE CLASS	DIRECT	η UP,DN(C180-360)	1.8,48.1
LAMPS INSIDE	1	η up (%)	4.0	CIBSE SHR NOM	1.25
TEST VOLTAGE(V)		η down (%)	96.0	CIBSE SHR MAX	1.35

LUMINOUS INTENSITY DISTRIBUTION DIAGRAM



C0 PLANE ISOLUX DIAGRAM (UNIT:lx)



C Range: 0 - 360DEG  
C Interval: 30.0DEG  
Test Speed: HIGH  
Temperature:25.3℃  
Operators:  
Test Date:2025-05-19

γ Range: 0 - 180DEG  
γ Interval: 1.0DEG  
Test System:EVERFINE GO-2000B\_V1 SYSTEM V2.00.488  
Humidity:65.0%  
Test Distance:6.360m [K=1.0000]  
Remarks:

## ZONAL FLUX DIAGRAM

## ZONAL FLUX DIAGRAM:

$\gamma$	C0	C45	C90	C135	C180	C225	C270	C315	$\gamma$	$\Phi$ zone	$\Phi$ total	%lum, lamp
10	187.2	187.7	188.1	188.1	188.1	187.9	187.6	187.5	0- 10	18.10	18.10	3.11,3.11
20	175.9	177.0	177.8	177.8	177.7	177.4	176.9	176.7	10- 20	51.72	69.82	12,12
30	158.5	160.0	161.1	161.1	161.1	160.6	159.9	159.3	20- 30	78.06	147.9	25.4,25.4
40	135.9	137.8	139.3	139.3	139.2	138.7	137.7	136.9	30- 40	93.64	241.5	41.5,41.5
50	110.1	112.1	113.8	113.8	113.7	113.2	112.2	111.1	40- 50	96.94	338.5	58.1,58.1
60	82.22	84.28	86.01	86.10	86.26	85.67	84.65	83.40	50- 60	88.36	426.8	73.3,73.3
70	54.09	55.95	57.58	57.82	58.15	57.65	56.78	55.33	60- 70	70.05	496.9	85.4,85.4
80	26.67	28.10	29.49	29.85	30.39	30.04	29.29	27.87	70- 80	45.12	542.0	93.1,93.1
90	4.327	4.480	3.877	5.151	5.828	4.895	3.224	4.026	80- 90	17.14	559.1	96,96
100	2.598	3.532	4.244	3.519	2.383	2.698	3.356	2.682	90-100	3.561	562.7	96.7,96.7
110	2.966	3.804	4.481	3.814	2.628	2.969	3.585	2.934	100-110	3.440	566.1	97.2,97.2
120	3.311	4.012	4.585	4.043	2.958	3.223	3.721	3.134	110-120	3.485	569.6	97.8,97.8
130	3.563	4.148	4.614	4.209	3.280	3.443	3.761	3.319	120-130	3.320	572.9	98.4,98.4
140	3.845	4.276	4.620	4.347	3.616	3.685	3.732	3.442	130-140	2.987	575.9	98.9,98.9
150	4.112	4.391	4.655	4.475	3.949	3.976	3.902	3.732	140-150	2.534	578.5	99.4,99.4
160	4.373	4.510	4.695	4.593	4.273	4.317	4.206	4.098	150-160	1.971	580.4	99.7,99.7
170	4.592	4.626	4.724	4.677	4.563	4.601	4.602	4.536	160-170	1.272	581.7	99.9,99.9
180	4.692	4.732	4.773	4.740	4.695	4.733	4.773	4.737	170-180	0.4454	582.1	100,100
DEG	LUMINOUS INTENSITY:cd									UNIT:lm		

Conical surface Flux(90deg): 290.35 lm

%lum = 49.9%

%lamp = 49.9%

Conical surface Flux(130deg): 464.62 lm

%lum = 79.8%

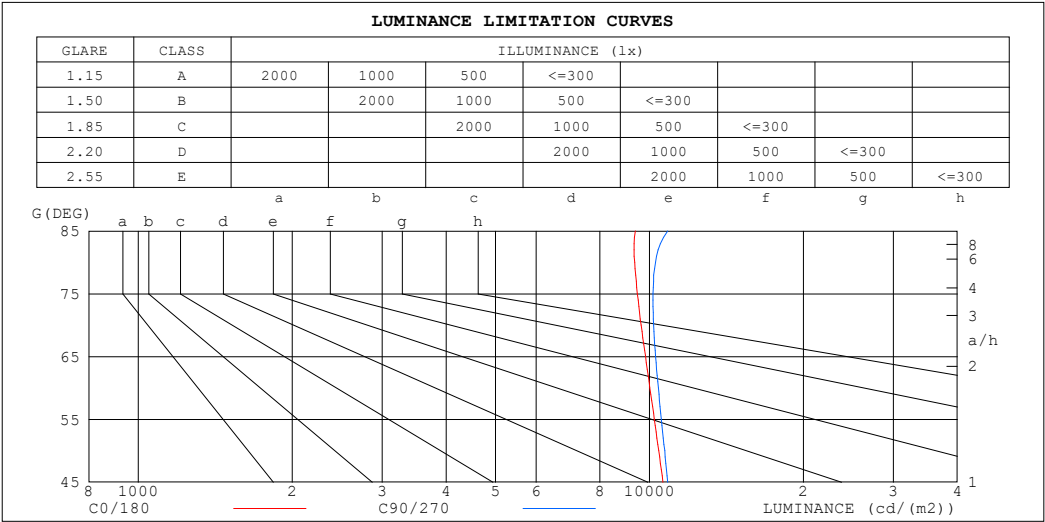
%lamp = 79.8%

C Range: 0 - 360DEG  
 C Interval: 30.0DEG  
 Test Speed: HIGH  
 Temperature:25.3℃  
 Operators:  
 Test Date:2025-05-19

$\gamma$  Range: 0 - 180DEG  
 $\gamma$  Interval: 1.0DEG  
 Test System:EVERFINE GO-2000B\_V1 SYSTEM V2.00.488  
 Humidity:65.0%  
 Test Distance:6.360m [K=1.0000]  
 Remarks:

LUMINANCE LIMITATION CURVES

Test:U:24.00V I:0.5309A P:12.74W PF:1.000 Freq:0Hz Lamp Flux:582.14x1 lm		
NAME: SF28-24V-5050-72-4500	TYPE:	WEIGHT:
SPEC.:	DIM.: Length=1m	SERIAL No.:
MFR.: OLympia lighting	SUR.:	Shielding Angle:



LUMINANCE cd/(m2)		
G (DEG)	C0/180	C90/270
85	9389	10855
80	9355	10275
75	9472	10160
70	9633	10187
65	9821	10279
60	10016	10408
55	10222	10543
50	10430	10707
45	10626	10857

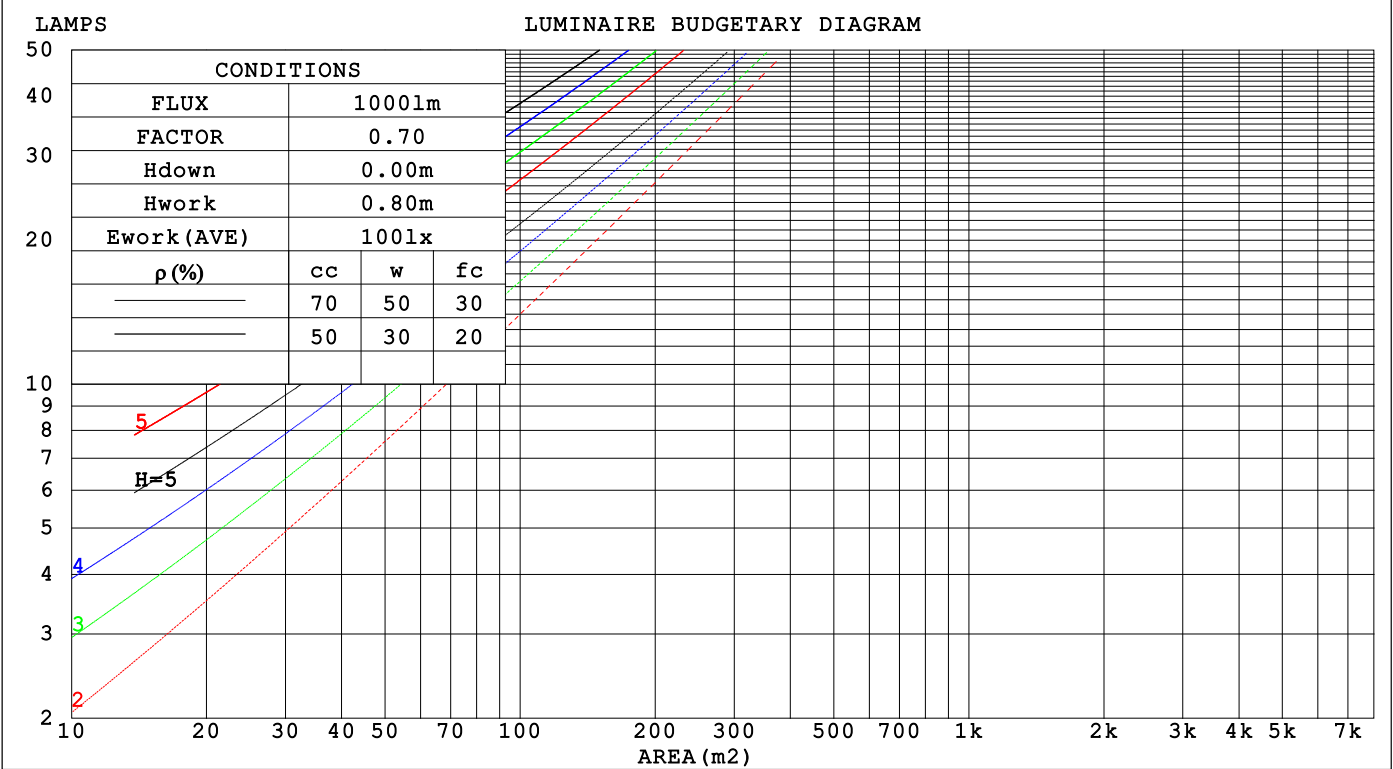
C Range: 0 - 360DEG  
C Interval: 30.0DEG  
Test Speed: HIGH  
Temperature:25.3℃  
Operators:  
Test Date:2025-05-19

γ Range: 0 - 180DEG  
γ Interval: 1.0DEG  
Test System:EVERFINE GO-2000B\_V1 SYSTEM V2.00.488  
Humidity:65.0%  
Test Distance:6.360m [K=1.0000]  
Remarks:

CU AND LUMINAIRE BUDGETARY ESTIMATE DIAGRAM

Test:U:24.00V I:0.5309A P:12.74W PF:1.000 Freq:0Hz		
Lamp Flux:582.14x1 lm		
NAME: SF28-24V-5050-72-4500	TYPE:	WEIGHT:
SPEC.:	DIM.: Length=1m	SERIAL No.:
MFR.: OLYMPIA lighting	SUR.:	Shielding Angle:

pcc	80%			70%			50%			30%			10%			0
pw	50%	30%	10%	50%	30%	10%	50%	30%	10%	50%	30%	10%	50%	30%	10%	0
pfc	20%			20%			20%			20%			20%			0
RCR	RCR:Room Cavity Ratio															



C Range: 0 - 360DEG  
C Interval: 30.0DEG  
Test Speed: HIGH  
Temperature:25.3℃  
Operators:  
Test Date:2025-05-19

γ Range: 0 - 180DEG  
γ Interval: 1.0DEG  
Test System:EVERFINE GO-2000B\_V1 SYSTEM V2.00.488  
Humidity:65.0%  
Test Distance:6.360m [K=1.0000]  
Remarks:

## WEC AND CCEC

Test:U:24.00V I:0.5309A P:12.74W PF:1.000 Freq:0Hz Lamp Flux:582.14x1 lm		
NAME: SF28-24V-5050-72-4500	TYPE:	WEIGHT:
SPEC.:	DIM.: Length=1m	SERIAL No.:
MFR.: OLympia lighting	SUR.:	Shielding Angle:

pcc	80%			70%			50%			30%			10%			0														
pw	50%	30%	10%	50%	30%	10%	50%	30%	10%	50%	30%	10%	50%	30%	10%	0														
pfc	20%			20%			20%			20%			20%			0														
RCR	RCR:Room Cavity Ratio															Wall Exitance Coefficients(WEC)														
0.0																														
1.0	.325	.185	.059	.317	.181	.057	.301	.173	.055	.287	.165	.053	.274	.159	.051															
2.0	.300	.164	.050	.293	.161	.050	.279	.155	.048	.266	.149	.047	.254	.144	.045															
3.0	.275	.146	.044	.269	.144	.043	.256	.139	.042	.245	.134	.041	.234	.130	.040															
4.0	.252	.131	.039	.247	.129	.038	.236	.125	.037	.225	.121	.036	.216	.117	.036															
5.0	.232	.118	.034	.227	.117	.034	.217	.113	.033	.208	.110	.033	.200	.107	.032															
6.0	.215	.108	.031	.210	.106	.031	.201	.103	.030	.193	.100	.030	.185	.098	.029															
7.0	.200	.099	.028	.195	.097	.028	.188	.095	.027	.180	.092	.027	.173	.090	.026															
8.0	.186	.091	.026	.182	.090	.025	.175	.088	.025	.168	.085	.025	.162	.083	.024															
9.0	.174	.084	.024	.171	.083	.023	.164	.081	.023	.158	.079	.023	.152	.077	.022															
10.0	.164	.079	.022	.161	.078	.022	.155	.076	.021	.149	.074	.021	.144	.072	.021															

pcc	80%			70%			50%			30%			10%			0
pw	50%	30%	10%	50%	30%	10%	50%	30%	10%	50%	30%	10%	50%	30%	10%	0
pfc	20%			20%			20%			20%			20%			0
RCR	RCR:Room Cavity Ratio						Ceiling Cavity Exitance Coefficients (CCEC)									
0.0	.221	.221	.221	.189	.189	.189	.129	.129	.129	.074	.074	.074	.024	.024	.024	
1.0	.212	.186	.164	.181	.160	.141	.124	.110	.097	.071	.064	.057	.023	.020	.018	
2.0	.204	.162	.128	.175	.140	.110	.120	.097	.077	.069	.056	.045	.022	.018	.015	
3.0	.196	.145	.104	.168	.125	.090	.115	.087	.063	.067	.051	.037	.021	.016	.012	
4.0	.189	.132	.089	.162	.114	.077	.111	.079	.054	.064	.047	.032	.021	.015	.011	
5.0	.181	.122	.078	.155	.105	.068	.107	.074	.048	.062	.043	.028	.020	.014	.009	
6.0	.174	.113	.070	.149	.098	.061	.103	.069	.043	.060	.040	.026	.019	.013	.008	
7.0	.167	.107	.064	.144	.092	.056	.099	.065	.040	.058	.038	.024	.019	.012	.008	
8.0	.160	.101	.060	.138	.087	.052	.096	.061	.037	.056	.036	.022	.018	.012	.007	
9.0	.154	.096	.056	.133	.083	.049	.092	.058	.035	.054	.035	.021	.017	.011	.007	
10.0	.149	.092	.054	.128	.080	.047	.089	.056	.033	.052	.033	.020	.017	.011	.007	

C Range: 0 - 360DEG  
C Interval: 30.0DEG  
Test Speed: HIGH  
Temperature:25.3℃  
Operators:  
Test Date:2025-05-19

γ Range: 0 - 180DEG  
γ Interval: 1.0DEG  
Test System:EVERFINE GO-2000B\_V1 SYSTEM V2.00.488  
Humidity:65.0%  
Test Distance:6.360m [K=1.0000]  
Remarks:

UGR(Unified Glare Rating) Table

Test:U:24.00V I:0.5309A P:12.74W PF:1.000 Freq:0Hz Lamp Flux:582.14x1 lm										
NAME: SF28-24V-5050-72-4500					TYPE:			WEIGHT:		
SPEC.:					DIM.: Length=1m			SERIAL No.:		
MFR.: OLympia lighting					SUR.:			Shielding Angle:		
ceiling/cavity	0.7	0.7	0.5	0.5	0.3	0.7	0.7	0.5	0.5	0.3
walls	0.5	0.3	0.5	0.3	0.3	0.5	0.3	0.5	0.3	0.3
working plane	0.2	0.2	0.2	0.2	0.2	0.2	0.2	0.2	0.2	0.2
Room dimensions	Viewed crosswise					Viewed endwise				
x = 2H y = 2H	21.5	23.0	21.9	23.3	23.6	21.7	23.2	22.0	23.4	23.7
3H	23.2	24.5	23.5	24.8	25.2	23.4	24.7	23.7	25.0	25.4
4H	23.9	25.2	24.3	25.5	25.9	24.1	25.4	24.5	25.7	26.1
6H	24.5	25.7	24.9	26.0	26.4	24.7	26.0	25.1	26.3	26.7
8H	24.7	25.9	25.1	26.2	26.6	25.0	26.2	25.4	26.5	26.9
12H	24.8	26.0	25.3	26.4	26.7	25.2	26.3	25.6	26.7	27.1
4H 2H	22.2	23.5	22.6	23.8	24.2	22.3	23.6	22.7	23.9	24.3
3H	24.0	25.2	24.4	25.5	25.9	24.2	25.3	24.6	25.7	26.1
4H	24.9	25.9	25.3	26.3	26.7	25.1	26.1	25.5	26.5	26.9
6H	25.6	26.5	26.1	27.0	27.4	25.8	26.8	26.3	27.2	27.7
8H	25.9	26.8	26.4	27.2	27.7	26.2	27.0	26.6	27.5	27.9
12H	26.1	26.9	26.6	27.4	27.9	26.4	27.2	26.9	27.7	28.2
8H 4H	25.2	26.1	25.7	26.5	27.0	25.4	26.2	25.9	26.7	27.2
6H	26.1	26.8	26.6	27.3	27.8	26.3	27.1	26.9	27.5	28.1
8H	26.5	27.2	27.0	27.7	28.2	26.8	27.4	27.3	27.9	28.5
12H	26.9	27.4	27.4	27.9	28.5	27.2	27.7	27.7	28.2	28.8
12H 4H	25.2	26.0	25.7	26.5	27.0	25.4	26.2	25.9	26.7	27.2
6H	26.2	26.9	26.7	27.4	27.9	26.4	27.1	27.0	27.6	28.1
8H	26.7	27.2	27.2	27.7	28.3	26.9	27.5	27.5	28.0	28.6
Variations with the observer position at spacings(CIE Pub.117):										
S = 1.0H	+ 0.1 / - 0.2					+ 0.1 / - 0.2				
1.5H	+ 0.2 / - 0.3					+ 0.2 / - 0.3				
2.0H	+ 0.1 / - 0.3					+ 0.1 / - 0.3				

CIE Pub.117, 582.1 lm Total Lamp Luminous Flux Correct (8log(F/F0) = -1.9)  
Area: 0.0165 m2

C Range: 0 - 360DEG  
C Interval: 30.0DEG  
Test Speed: HIGH  
Temperature:25.3℃  
Operators:  
Test Date:2025-05-19

γ Range: 0 - 180DEG  
γ Interval: 1.0DEG  
Test System:EVERFINE GO-2000B\_V1 SYSTEM V2.00.488  
Humidity:65.0%  
Test Distance:6.360m [K=1.0000]  
Remarks:

## UTILIZATION FACTORS TABLE

Test:U:24.00V I:0.5309A P:12.74W PF:1.000 Freq:0Hz Lamp Flux:582.14x1 lm		
NAME: SF28-24V-5050-72-4500	TYPE:	WEIGHT:
SPEC.:	DIM.: Length=1m	SERIAL No.:
MFR.: OLympia lighting	SUR.:	Shielding Angle:

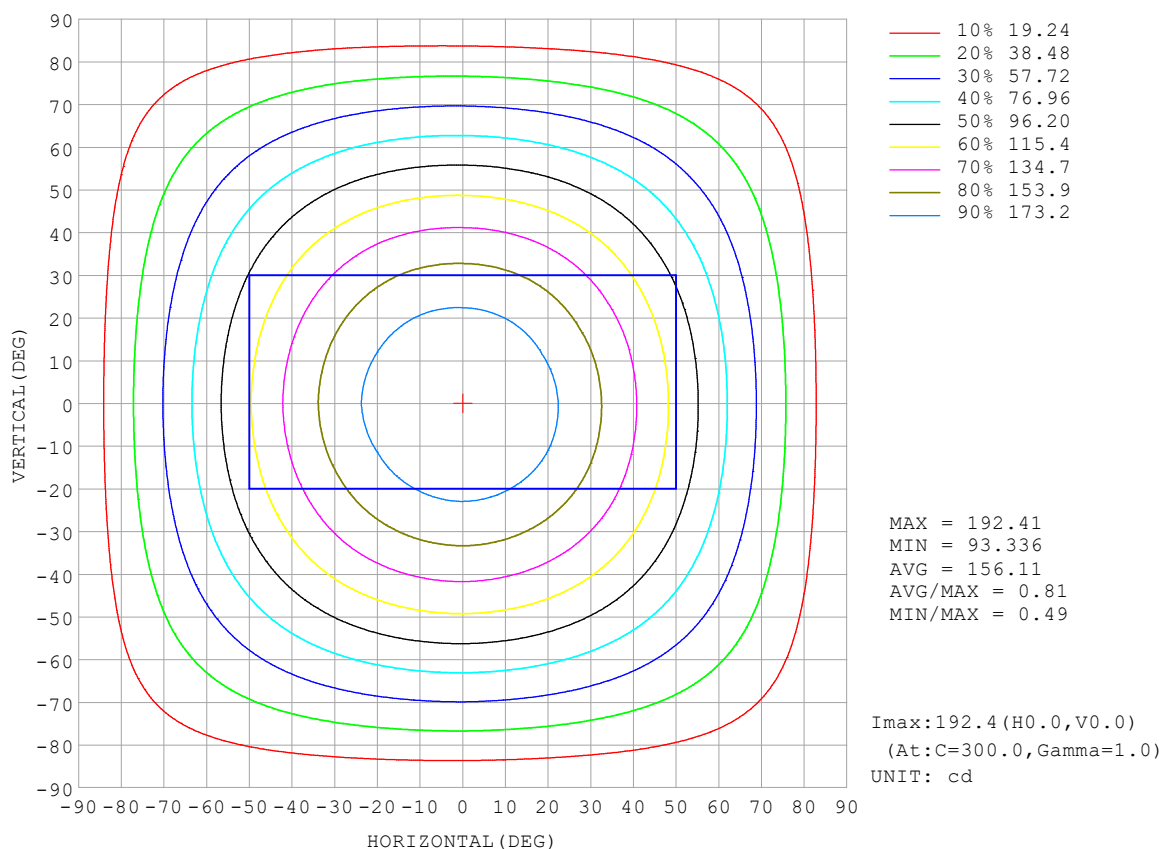
REFLECTANCE										
Ceiling	0.8	0.8	0.8	0.7	0.7	0.7	0.5	0.5	0.5	0
Walls	0.7	0.5	0.3	0.7	0.5	0.3	0.7	0.5	0.3	0
Working plane	0.2	0.2	0.2	0.2	0.2	0.2	0.2	0.2	0.2	0
ROOM INDEX	UTILIZATION FACTORS (PERCENT) $k(RI) \times RCR = 5$									
$k = 0.60$	56	44	37	55	44	37	53	43	37	30
0.80	66	54	46	64	53	46	62	52	45	38
1.00	74	62	55	72	62	54	70	63	54	46
1.25	81	70	63	79	69	62	76	67	61	53
1.50	86	75	68	84	74	68	80	72	66	58
2.00	93	84	77	91	82	76	87	80	74	65
2.50	97	89	82	94	87	81	90	84	79	69
3.00	100	93	87	98	91	86	93	88	83	73
4.00	104	98	93	102	96	92	97	92	88	78
5.00	107	102	97	104	99	95	99	95	92	81
ROOM INDEX	UF (total)									Direct
According to DIN EN 13032-2 2004			Suspended					SHRNOM = 1.25		

C Range: 0 - 360DEG  
 C Interval: 30.0DEG  
 Test Speed: HIGH  
 Temperature: 25.3 °C  
 Operators:  
 Test Date: 2025-05-19

γ Range: 0 - 180DEG  
 γ Interval: 1.0DEG  
 Test System: EVERFINE GO-2000B\_V1 SYSTEM V2.00.488  
 Humidity: 65.0%  
 Test Distance: 6.360m [K=1.0000]  
 Remarks:

## ISOCANDELA DIAGRAM

Test:U:24.00V I:0.5309A P:12.74W PF:1.000 Freq:0Hz Lamp Flux:582.14x1 lm		
NAME: SF28-24V-5050-72-4500	TYPE:	WEIGHT:
SPEC.:	DIM.: Length=1m	SERIAL No.:
MFR.: OLympia lighting	SUR.:	Shielding Angle:

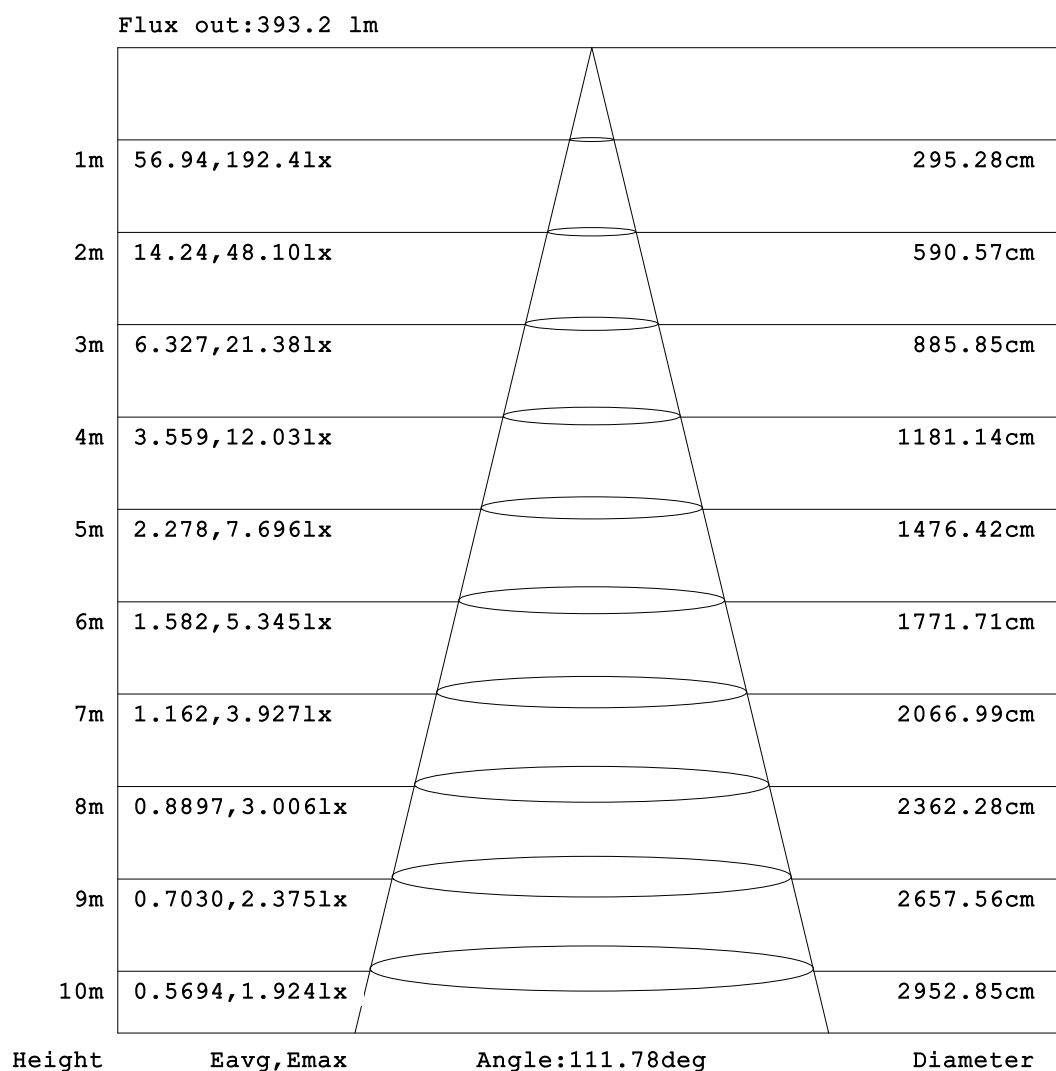


C Range: 0 - 360DEG  
C Interval: 30.0DEG  
Test Speed: HIGH  
Temperature:25.3℃  
Operators:  
Test Date:2025-05-19

γ Range: 0 - 180DEG  
γ Interval: 1.0DEG  
Test System:EVERFINE GO-2000B\_V1 SYSTEM V2.00.488  
Humidity:65.0%  
Test Distance:6.360m [K=1.0000]  
Remarks:

## AAI Figure

Test:U:24.00V I:0.5309A P:12.74W PF:1.000 Freq:0Hz Lamp Flux:582.14x1 lm		
NAME: SF28-24V-5050-72-4500	TYPE:	WEIGHT:
SPEC.:	DIM.: Length=1m	SERIAL No.:
MFR.: OLympia lighting	SUR.:	Shielding Angle:



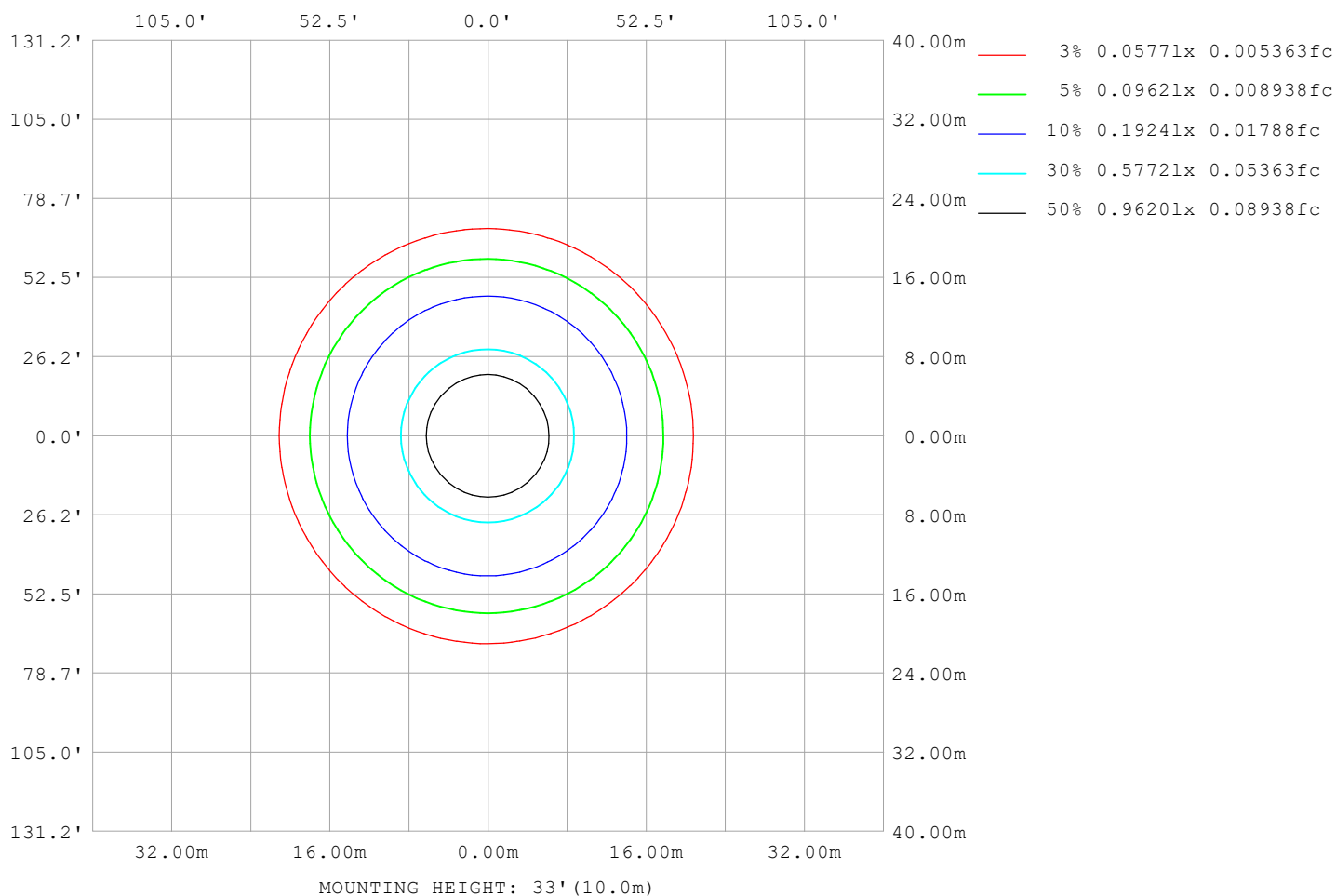
Note:The Curves indicate the illuminated area and the average illumination when the luminaire is at different distance.

C Range: 0 - 360DEG  
C Interval: 30.0DEG  
Test Speed: HIGH  
Temperature:25.3℃  
Operators:  
Test Date:2025-05-19

γ Range: 0 - 180DEG  
γ Interval: 1.0DEG  
Test System:EVERFINE GO-2000B\_V1 SYSTEM V2.00.488  
Humidity:65.0%  
Test Distance:6.360m [K=1.0000]  
Remarks:

## ISOLUX DIAGRAM

Test:U:24.00V I:0.5309A P:12.74W PF:1.000 Freq:0Hz Lamp Flux:582.14x1 lm		
NAME: SF28-24V-5050-72-4500	TYPE:	WEIGHT:
SPEC.:	DIM.: Length=1m	SERIAL No.:
MFR.: OLympia lighting	SUR.:	Shielding Angle:



C Range: 0 - 360DEG  
C Interval: 30.0DEG  
Test Speed: HIGH  
Temperature: 25.3°C  
Operators:  
Test Date: 2025-05-19

γ Range: 0 - 180DEG  
γ Interval: 1.0DEG  
Test System: EVERFINE GO-2000B\_V1 SYSTEM V2.00.488  
Humidity: 65.0%  
Test Distance: 6.360m [K=1.0000]  
Remarks:

## LED Avg.L Report

Test:U:24.00V I:0.5309A P:12.74W PF:1.000 Freq:0Hz Lamp Flux:582.14x1 lm		
NAME: SF28-24V-5050-72-4500	TYPE:	WEIGHT:
SPEC.:	DIM.: Length=1m	SERIAL No.:
MFR.: OLympia lighting	SUR.:	Shielding Angle:

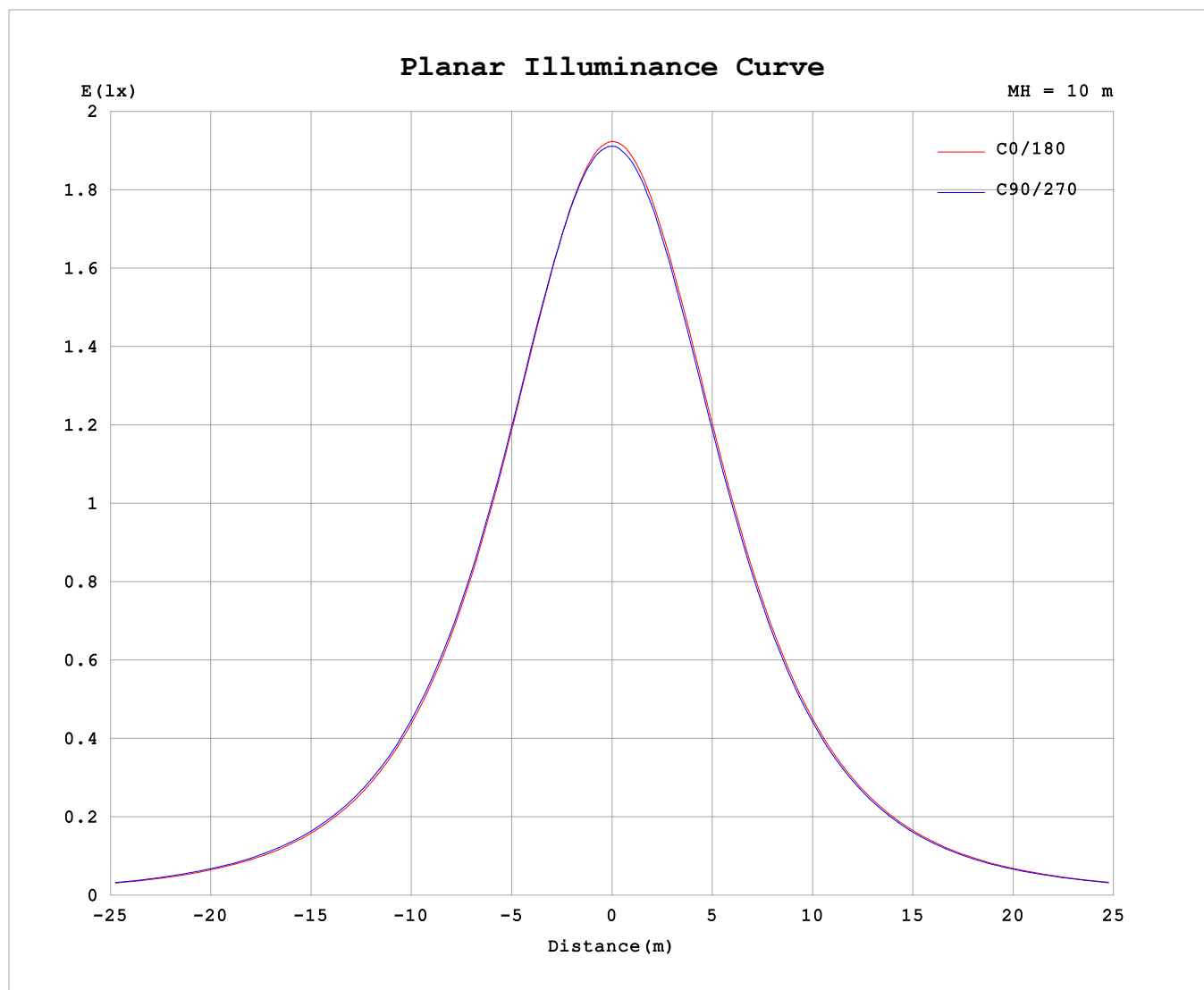
AvgL	cd/m2
L_0~180 (65) av	10066
L_0~180 (75) av	9884
L_0~180 (85) av	10504
L_90~270 (65) av	10219
L_90~270 (75) av	10116
L_90~270 (85) av	10887
L_45 (65) av	10153
L_45 (75) av	10007
L_45 (85) av	10701

Standard: GB/T 29293-2012

C Range: 0 - 360DEG  
C Interval: 30.0DEG  
Test Speed: HIGH  
Temperature:25.3℃  
Operators:  
Test Date:2025-05-19

γ Range: 0 - 180DEG  
γ Interval: 1.0DEG  
Test System:EVERFINE GO-2000B\_V1 SYSTEM V2.00.488  
Humidity:65.0%  
Test Distance:6.360m [K=1.0000]  
Remarks:

## Planar Illuminance Curve



C Range: 0 - 360DEG  
C Interval: 30.0DEG  
Test Speed: HIGH  
Temperature: 25.3 °C  
Operators:  
Test Date: 2025-05-19

$\gamma$  Range: 0 - 180DEG  
 $\gamma$  Interval: 1.0DEG  
Test System: EVERFINE GO-2000B\_V1 SYSTEM V2.00.488  
Humidity: 65.0%  
Test Distance: 6.360m [K=1.0000]  
Remarks:

## LUMINOUS DISTRIBUTION INTENSITY DATA

Test:U:24.00V I:0.5309A P:12.74W PF:1.000 Freq:0Hz Lamp Flux:582.14x1 lm																	
NAME: SF28-24V-5050-72-4500									TYPE:						WEIGHT:		
SPEC.:									DIM.: Length=1m						SERIAL No.:		
MFR.: OLYMPIA lighting									SUR.:						Shielding Angle:		

Table--1

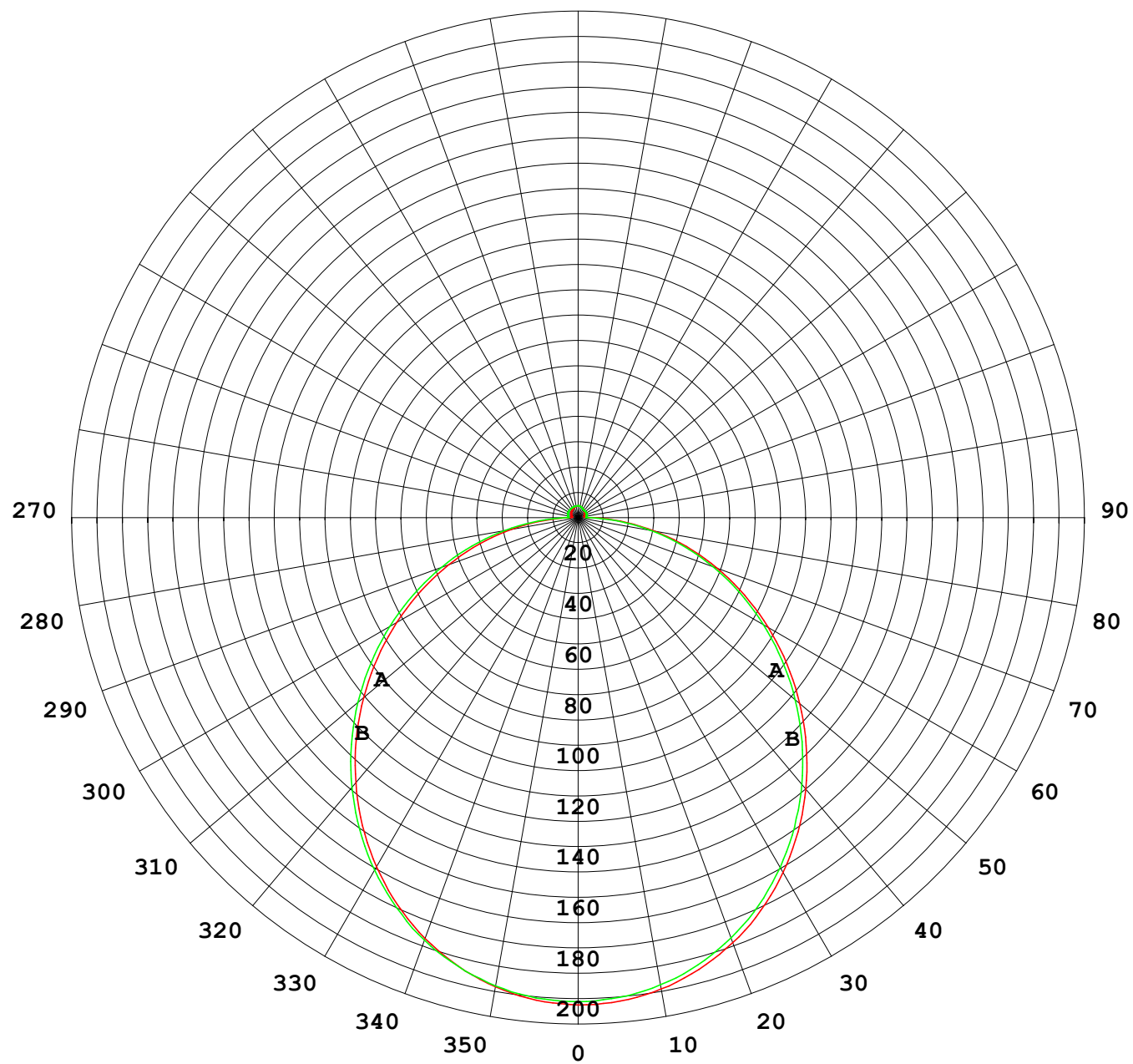
UNIT: cd

C (DEG) γ (DEG)	0	30	60	90	120	150	180	210	240	270	300	330						
0	191	191	191	191	191	191	191	191	191	191	191	191						
5	190	191	191	191	190	191	191	191	191	190	190	190						
10	187	188	188	188	188	188	188	188	188	188	188	187						
15	182	183	183	184	184	184	184	184	183	183	183	183						
20	176	177	177	178	178	178	178	177	177	177	177	176						
25	168	169	170	170	170	170	170	170	170	169	169	168						
30	158	160	160	161	161	161	161	161	161	160	160	159						
35	148	149	150	151	151	151	151	150	150	149	149	148						
40	136	137	138	139	139	139	139	139	139	138	137	136						
45	123	125	126	127	127	127	127	126	126	125	125	124						
50	110	112	113	114	114	114	114	113	113	112	112	111						
55	96.3	97.7	99.0	99.9	100	100	100	99.7	99.4	98.6	97.9	97.0						
60	82.2	83.7	84.9	86.0	86.1	86.1	86.3	85.8	85.5	84.6	83.9	82.9						
65	68.1	69.6	70.7	71.8	71.9	72.0	72.2	71.8	71.5	70.7	69.9	68.9						
70	54.1	55.4	56.5	57.6	57.7	57.9	58.2	57.8	57.5	56.8	55.8	54.8						
75	40.2	41.4	42.4	43.5	43.6	43.9	44.2	43.9	43.7	42.9	42.0	41.0						
80	26.7	27.7	28.5	29.5	29.7	30.0	30.4	30.1	30.0	29.3	28.4	27.3						
85	13.4	14.3	14.8	15.6	15.9	16.3	16.8	16.4	16.4	15.7	14.9	14.0						
90	4.33	4.60	4.36	3.88	4.76	5.54	5.83	5.30	4.49	3.22	3.91	4.14						
95	2.43	3.02	3.73	4.06	3.77	3.35	2.75	2.66	2.89	3.20	2.86	2.25						
100	2.60	3.18	3.88	4.24	3.87	3.17	2.38	2.40	2.99	3.36	2.99	2.38						
105	2.79	3.34	4.02	4.37	4.03	3.31	2.46	2.50	3.13	3.48	3.04	2.54						
110	2.97	3.49	4.12	4.48	4.16	3.47	2.63	2.67	3.27	3.58	3.18	2.69						
115	3.14	3.63	4.20	4.54	4.25	3.62	2.79	2.83	3.38	3.67	3.32	2.85						
120	3.31	3.74	4.28	4.59	4.34	3.75	2.96	2.99	3.46	3.72	3.27	2.99						
125	3.45	3.82	4.34	4.61	4.40	3.87	3.12	3.14	3.53	3.76	3.32	3.12						
130	3.56	3.92	4.38	4.61	4.44	3.98	3.28	3.30	3.58	3.76	3.38	3.26						
135	3.71	4.02	4.41	4.61	4.48	4.09	3.45	3.47	3.65	3.74	3.45	3.21						
140	3.84	4.11	4.44	4.62	4.51	4.18	3.62	3.64	3.73	3.73	3.52	3.37						
145	3.98	4.19	4.47	4.63	4.54	4.28	3.78	3.81	3.83	3.75	3.62	3.53						
150	4.11	4.28	4.50	4.65	4.59	4.36	3.95	3.99	3.97	3.90	3.76	3.70						
155	4.25	4.36	4.54	4.67	4.62	4.46	4.12	4.16	4.14	4.03	3.96	3.87						
160	4.37	4.45	4.57	4.70	4.64	4.54	4.27	4.32	4.32	4.21	4.15	4.05						
165	4.50	4.53	4.61	4.71	4.66	4.60	4.42	4.46	4.50	4.41	4.38	4.21						
170	4.59	4.61	4.64	4.72	4.68	4.68	4.56	4.57	4.63	4.60	4.58	4.49						
175	4.65	4.68	4.69	4.75	4.72	4.73	4.66	4.66	4.73	4.71	4.70	4.63						
180	4.69	4.71	4.75	4.77	4.75	4.73	4.70	4.71	4.75	4.77	4.76	4.71						

C Range: 0 - 360DEG  
C Interval: 30.0DEG  
Test Speed: HIGH  
Temperature:25.3℃  
Operators:  
Test Date:2025-05-19

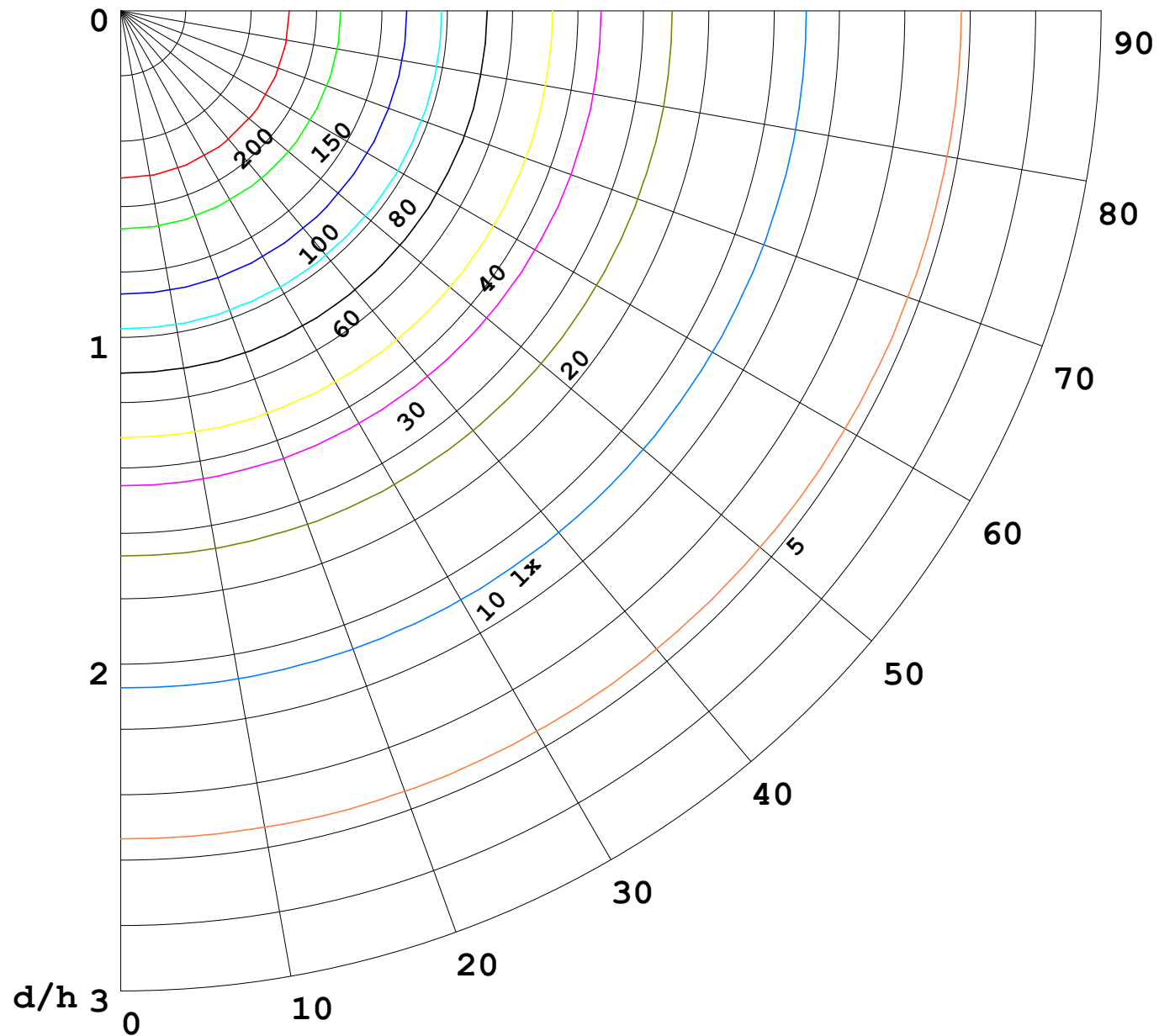
γ Range: 0 - 180DEG  
γ Interval: 1.0DEG  
Test System:EVERFINE GO-2000B\_V1 SYSTEM V2.00.488  
Humidity:65.0%  
Test Distance:6.360m [K=1.0000]  
Remarks:

I (cd)



1000 lm

$\kappa = 1$



F = 1000 lm  
 K = 0.7  
 Hcc = 0.8 m  
 Hfc = 0.0 m  
 Eave = 100 lx

	Pcc	Pw	Pfc
————	70	50	30
————	50	30	20

