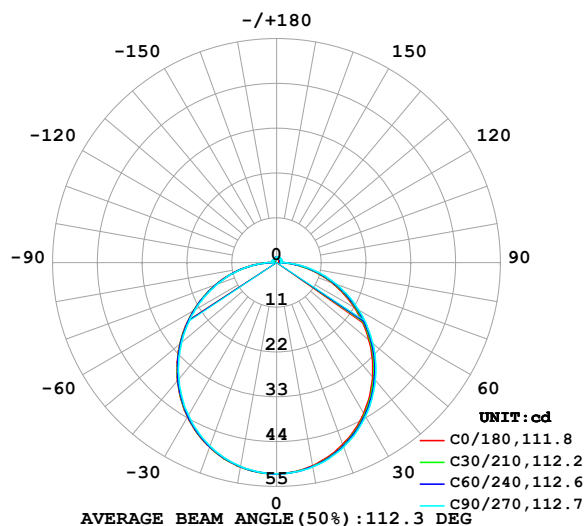


LUMINAIRE PHOTOMETRIC TEST REPORT

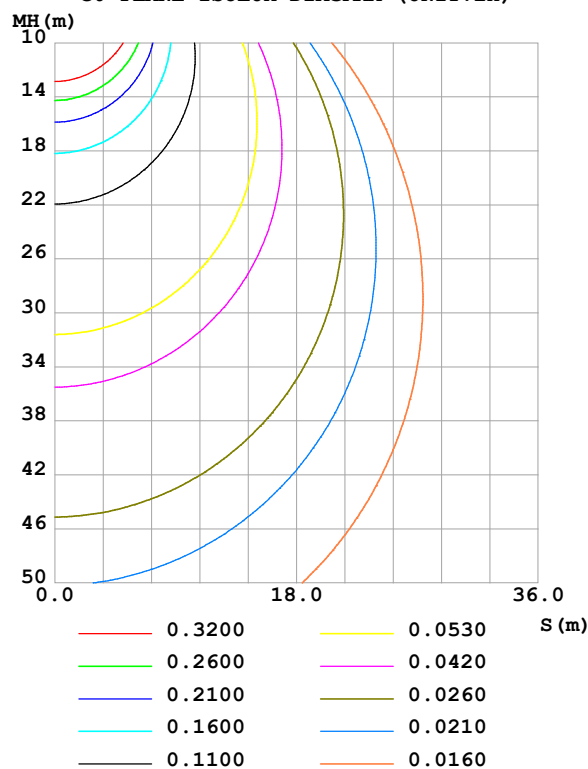
Test:U:24.00V I:0.5187A P:12.45W PF:1.000 Freq:0Hz Lamp Flux:158.016x1 lm		
NAME: SF28-24V-5050-72-R	TYPE:	WEIGHT:
SPEC.:	DIM.: Length=1m	SERIAL No.:
MFR.: OLympia lighting	SUR.:	Shielding Angle:

DATA OF LAMP		PHOTOMETRIC DATA Eff: 12.69 lm/W			
MODEL	5050	Imax (cd)	51.88	S/MH(C0/180)	1.26
NOMINAL POWER(W)	13	LOR(%)	100.0	S/MH(C90/270)	1.24
RATED VOLTAGE(V)	24	TOTAL FLUX(lm)	158.02	η UP,DN(C0-180)	2.2,47.8
NOMINAL FLUX(lm)	158.016	CIE CLASS	DIRECT	η UP,DN(C180-360)	1.9,48.1
LAMPS INSIDE	1	η up (%)	4.0	CIBSE SHR NOM	1.25
TEST VOLTAGE(V)		η down (%)	96.0	CIBSE SHR MAX	1.35

LUMINOUS INTENSITY DISTRIBUTION DIAGRAM



C0 PLANE ISOLUX DIAGRAM (UNIT:lx)



C Range: 0 - 360DEG
C Interval: 30.0DEG
Test Speed: HIGH
Temperature:25.3℃
Operators:
Test Date:2025-05-19

γ Range: 0 - 180DEG
 γ Interval: 1.0DEG
Test System:EVERFINE GO-2000B_V1 SYSTEM V2.00.488
Humidity:65.0%
Test Distance:6.360m [K=1.0000]
Remarks:

ZONAL FLUX DIAGRAM

ZONAL FLUX DIAGRAM:

γ	C0	C45	C90	C135	C180	C225	C270	C315	γ	Φ zone	Φ total	%lum, lamp
10	50.67	50.85	50.95	51.00	51.01	50.94	50.86	50.78	0- 10	4.905	4.905	3.1,3.1
20	47.55	47.91	48.17	48.24	48.24	48.15	47.95	47.74	10- 20	14.02	18.92	12,12
30	42.78	43.28	43.65	43.77	43.80	43.65	43.35	43.07	20- 30	21.15	40.07	25.4,25.4
40	36.67	37.25	37.73	37.88	37.91	37.75	37.40	37.02	30- 40	25.39	65.46	41.4,41.4
50	29.62	30.27	30.82	30.98	31.02	30.84	30.49	30.04	40- 50	26.29	91.76	58.1,58.1
60	22.08	22.73	23.30	23.47	23.57	23.38	23.08	22.55	50- 60	23.97	115.7	73.2,73.2
70	14.46	15.02	15.60	15.80	15.95	15.78	15.53	14.92	60- 70	19.01	134.7	85.3,85.3
80	7.012	7.455	7.983	8.226	8.412	8.286	8.094	7.454	70- 80	12.24	147.0	93,93
90	1.196	1.201	1.010	1.439	1.725	1.437	1.060	1.114	80- 90	4.662	151.6	96,96
100	0.7039	0.9389	1.120	0.9340	0.6363	0.7797	1.103	0.7645	90-100	0.9759	152.6	96.6,96.6
110	0.8058	1.024	1.202	1.023	0.7295	0.8528	1.161	0.8288	100-110	0.9590	153.6	97.2,97.2
120	0.8991	1.090	1.248	1.089	0.8200	0.8987	1.178	0.8683	110-120	0.9676	154.5	97.8,97.8
130	0.9754	1.140	1.268	1.146	0.9077	0.9404	1.068	0.9122	120-130	0.9167	155.5	98.4,98.4
140	1.063	1.187	1.280	1.193	1.001	1.009	1.024	0.9516	130-140	0.8222	156.3	98.9,98.9
150	1.139	1.226	1.303	1.235	1.100	1.104	1.053	1.045	140-150	0.7011	157.0	99.3,99.3
160	1.210	1.266	1.323	1.282	1.193	1.203	1.178	1.162	150-160	0.5499	157.5	99.7,99.7
170	1.272	1.299	1.332	1.304	1.275	1.282	1.274	1.273	160-170	0.3563	157.9	99.9,99.9
180	1.301	1.322	1.335	1.321	1.312	1.318	1.323	1.320	170-180	0.1244	158.0	100,100
DEG	LUMINOUS INTENSITY:cd									UNIT:lm		

Conical surface Flux(90deg): 78.708 lm

%lum = 49.8%

%lamp = 49.8%

Conical surface Flux(130deg): 125.99 lm

%lum = 79.7%

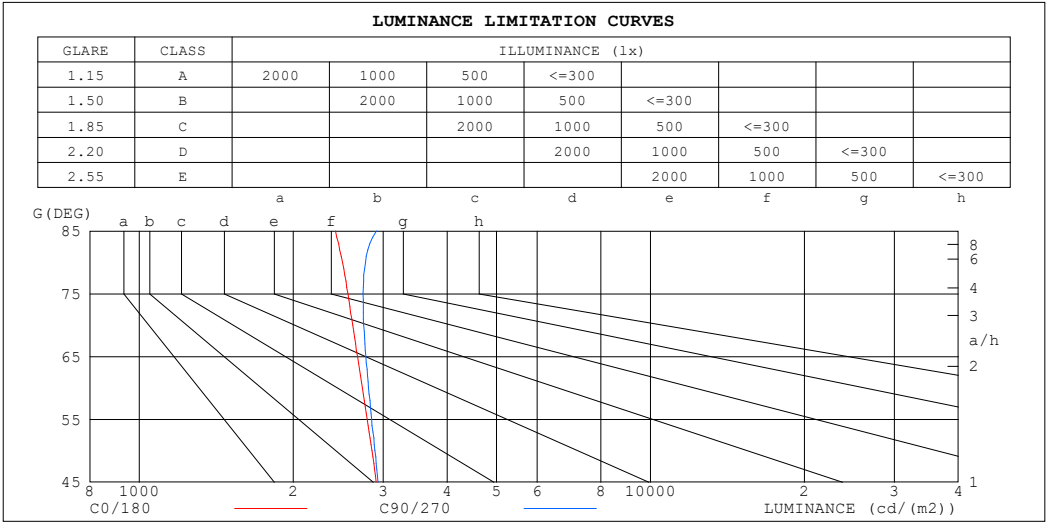
%lamp = 79.7%

C Range: 0 - 360DEG
 C Interval: 30.0DEG
 Test Speed: HIGH
 Temperature:25.3℃
 Operators:
 Test Date:2025-05-19

γ Range: 0 - 180DEG
 γ Interval: 1.0DEG
 Test System:EVERFINE GO-2000B_V1 SYSTEM V2.00.488
 Humidity:65.0%
 Test Distance:6.360m [K=1.0000]
 Remarks:

LUMINANCE LIMITATION CURVES

Test:U:24.00V I:0.5187A P:12.45W PF:1.000 Freq:0Hz Lamp Flux:158.016x1 lm		
NAME: SF28-24V-5050-72-R	TYPE:	WEIGHT:
SPEC.:	DIM.: Length=1m	SERIAL No.:
MFR.: OLympia lighting	SUR.:	Shielding Angle:



LUMINANCE cd/(m2)		
G (DEG)	C0/180	C90/270
85	2421	2909
80	2498	2771
75	2559	2737
70	2615	2749
65	2673	2774
60	2732	2809
55	2790	2847
50	2851	2890
45	2907	2929

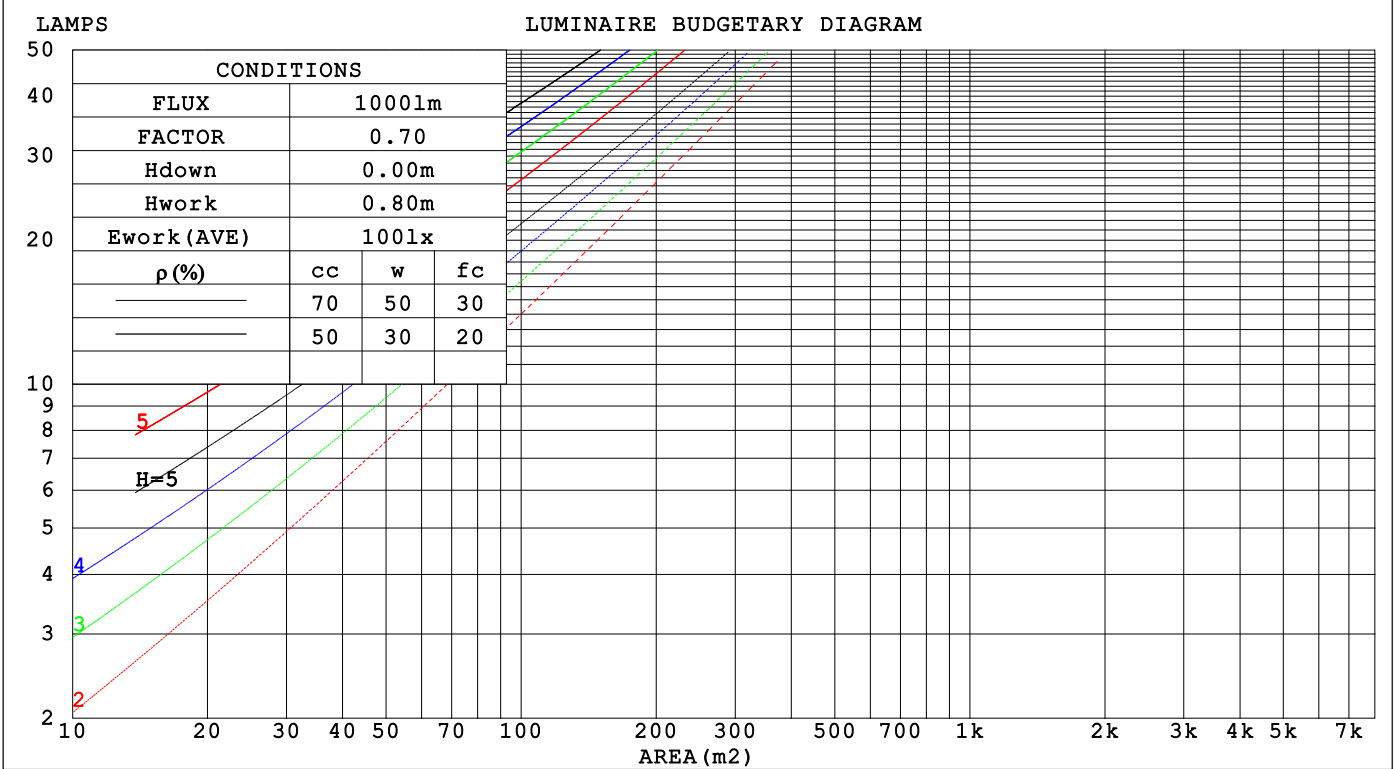
C Range: 0 - 360DEG
C Interval: 30.0DEG
Test Speed: HIGH
Temperature:25.3℃
Operators:
Test Date:2025-05-19

γ Range: 0 - 180DEG
γ Interval: 1.0DEG
Test System:EVERFINE GO-2000B_V1 SYSTEM V2.00.488
Humidity:65.0%
Test Distance:6.360m [K=1.0000]
Remarks:

CU AND LUMINAIRE BUDGETARY ESTIMATE DIAGRAM

Test:U:24.00V I:0.5187A P:12.45W PF:1.000 Freq:0Hz		
Lamp Flux:158.016x1 lm		
NAME: SF28-24V-5050-72-R	TYPE:	WEIGHT:
SPEC.:	DIM.: Length=1m	SERIAL No.:
MFR.: OLYMPIA lighting	SUR.:	Shielding Angle:

pcc	80%			70%			50%			30%			10%			0
pw	50%	30%	10%	50%	30%	10%	50%	30%	10%	50%	30%	10%	50%	30%	10%	0
pfc	20%			20%			20%			20%			20%			0
RCR	RCR:Room Cavity Ratio Coefficients of Utilization(CU)															
0.0	1.18	1.18	1.18	1.15	1.15	1.15	1.09	1.09	1.09	1.03	1.03	1.03	.98	.98	.98	.96
1.0	1.02	.98	.94	.99	.95	.92	.94	.91	.88	.90	.87	.85	.86	.83	.81	.79
2.0	.89	.82	.76	.86	.80	.74	.82	.77	.72	.78	.74	.70	.75	.71	.68	.65
3.0	.78	.69	.63	.76	.68	.62	.72	.66	.60	.69	.63	.59	.66	.61	.57	.55
4.0	.69	.60	.53	.67	.59	.52	.64	.57	.51	.61	.55	.50	.58	.53	.49	.46
5.0	.61	.52	.45	.60	.51	.45	.57	.50	.44	.55	.48	.43	.53	.47	.42	.40
6.0	.55	.46	.39	.54	.45	.39	.52	.44	.38	.50	.43	.38	.48	.42	.37	.35
7.0	.50	.41	.35	.49	.40	.35	.47	.39	.34	.45	.38	.33	.43	.38	.33	.31
8.0	.45	.37	.31	.45	.36	.31	.43	.36	.30	.41	.35	.30	.40	.34	.30	.28
9.0	.42	.33	.28	.41	.33	.28	.40	.32	.27	.38	.32	.27	.37	.31	.27	.25
10.0	.38	.31	.25	.38	.30	.25	.37	.30	.25	.35	.29	.24	.34	.28	.24	.22



C Range: 0 - 360DEG
C Interval: 30.0DEG
Test Speed: HIGH
Temperature:25.3℃
Operators:
Test Date:2025-05-19

γ Range: 0 - 180DEG
γ Interval: 1.0DEG
Test System:EVERFINE GO-2000B_V1 SYSTEM V2.00.488
Humidity:65.0%
Test Distance:6.360m [K=1.0000]
Remarks:

WEC AND CCEC

Test:U:24.00V I:0.5187A P:12.45W PF:1.000 Freq:0Hz Lamp Flux:158.016x1 lm		
NAME: SF28-24V-5050-72-R	TYPE:	WEIGHT:
SPEC.:	DIM.: Length=1m	SERIAL No.:
MFR.: OLympia lighting	SUR.:	Shielding Angle:

pcc	80%			70%			50%			30%			10%			0														
pw	50%	30%	10%	50%	30%	10%	50%	30%	10%	50%	30%	10%	50%	30%	10%	0														
pfc	20%			20%			20%			20%			20%			0														
RCR	RCR:Room Cavity Ratio															Wall Exitance Coefficients(WEC)														
0.0																														
1.0	.325	.185	.059	.317	.181	.057	.301	.173	.055	.287	.165	.053	.273	.159	.051															
2.0	.300	.164	.050	.293	.161	.050	.279	.155	.048	.266	.149	.047	.254	.144	.045															
3.0	.275	.146	.044	.269	.144	.043	.256	.139	.042	.245	.134	.041	.234	.130	.040															
4.0	.252	.131	.039	.247	.129	.038	.235	.125	.037	.225	.121	.036	.216	.117	.036															
5.0	.232	.118	.034	.227	.117	.034	.217	.113	.033	.208	.110	.033	.199	.107	.032															
6.0	.215	.108	.031	.210	.106	.031	.201	.103	.030	.193	.100	.029	.185	.098	.029															
7.0	.200	.099	.028	.195	.097	.028	.187	.095	.027	.180	.092	.027	.173	.090	.026															
8.0	.186	.091	.026	.182	.090	.025	.175	.088	.025	.168	.085	.025	.162	.083	.024															
9.0	.174	.084	.024	.171	.083	.023	.164	.081	.023	.158	.079	.023	.152	.077	.022															
10.0	.164	.079	.022	.161	.078	.022	.155	.076	.021	.149	.074	.021	.144	.072	.021															

pcc	80%			70%			50%			30%			10%			0
pw	50%	30%	10%	50%	30%	10%	50%	30%	10%	50%	30%	10%	50%	30%	10%	0
pfc	20%			20%			20%			20%			20%			0
RCR	RCR:Room Cavity Ratio						Ceiling Cavity Exitance Coefficients (CCEC)									
0.0	.221	.221	.221	.189	.189	.189	.129	.129	.129	.074	.074	.074	.024	.024	.024	
1.0	.212	.187	.164	.182	.160	.141	.124	.110	.098	.072	.064	.057	.023	.021	.018	
2.0	.205	.163	.128	.175	.140	.111	.120	.097	.077	.069	.056	.045	.022	.018	.015	
3.0	.197	.146	.105	.169	.126	.091	.116	.087	.064	.067	.051	.038	.021	.017	.012	
4.0	.189	.133	.089	.162	.115	.078	.112	.080	.055	.065	.047	.032	.021	.015	.011	
5.0	.182	.122	.078	.156	.106	.068	.107	.074	.048	.062	.043	.029	.020	.014	.009	
6.0	.174	.114	.071	.150	.099	.062	.103	.069	.044	.060	.041	.026	.019	.013	.009	
7.0	.168	.107	.065	.144	.093	.057	.100	.065	.040	.058	.038	.024	.019	.013	.008	
8.0	.161	.101	.060	.139	.088	.053	.096	.062	.037	.056	.036	.022	.018	.012	.007	
9.0	.155	.096	.057	.133	.084	.050	.092	.059	.035	.054	.035	.021	.017	.011	.007	
10.0	.149	.092	.054	.129	.080	.047	.089	.056	.034	.052	.033	.020	.017	.011	.007	

C Range: 0 - 360DEG
C Interval: 30.0DEG
Test Speed: HIGH
Temperature:25.3℃
Operators:
Test Date:2025-05-19

γ Range: 0 - 180DEG
γ Interval: 1.0DEG
Test System:EVERFINE GO-2000B_V1 SYSTEM V2.00.488
Humidity:65.0%
Test Distance:6.360m [K=1.0000]
Remarks:

UGR(Unified Glare Rating) Table

Test:U:24.00V I:0.5187A P:12.45W PF:1.000 Freq:0Hz Lamp Flux:158.016x1 lm											
NAME: SF28-24V-5050-72-R					TYPE:			WEIGHT:			
SPEC.:					DIM.: Length=1m			SERIAL No.:			
MFR.: OLympia lighting					SUR.:			Shielding Angle:			
ceiling/cavity	0.7	0.7	0.5	0.5	0.3	0.7	0.7	0.5	0.5	0.3	
walls	0.5	0.3	0.5	0.3	0.3	0.5	0.3	0.5	0.3	0.3	
working plane	0.2	0.2	0.2	0.2	0.2	0.2	0.2	0.2	0.2	0.2	
Room dimensions		Viewed crosswise					Viewed endwise				
x = 2H y = 2H	2H	21.6	23.0	21.9	23.3	23.6	21.6	23.1	22.0	23.4	23.7
	3H	23.2	24.5	23.5	24.9	25.2	23.3	24.7	23.7	25.0	25.3
	4H	23.9	25.2	24.2	25.5	25.8	24.1	25.4	24.4	25.7	26.0
	6H	24.4	25.7	24.8	26.0	26.4	24.7	25.9	25.1	26.3	26.6
	8H	24.6	25.8	25.1	26.2	26.6	24.9	26.1	25.4	26.5	26.9
	12H	24.8	25.9	25.2	26.3	26.7	25.1	26.3	25.6	26.7	27.0
4H	2H	22.2	23.5	22.6	23.8	24.2	22.3	23.6	22.6	23.9	24.2
	3H	24.0	25.1	24.4	25.5	25.9	24.1	25.3	24.5	25.6	26.0
	4H	24.8	25.9	25.3	26.3	26.7	25.0	26.1	25.5	26.5	26.9
	6H	25.6	26.5	26.0	26.9	27.4	25.8	26.7	26.3	27.2	27.6
	8H	25.8	26.7	26.3	27.1	27.6	26.1	27.0	26.6	27.4	27.9
	12H	26.0	26.8	26.5	27.3	27.8	26.4	27.2	26.9	27.6	28.1
8H	4H	25.2	26.0	25.7	26.5	27.0	25.3	26.2	25.8	26.6	27.1
	6H	26.1	26.8	26.6	27.3	27.8	26.3	27.0	26.8	27.5	28.0
	8H	26.5	27.1	27.0	27.6	28.1	26.7	27.4	27.2	27.9	28.4
	12H	26.8	27.3	27.3	27.8	28.4	27.1	27.6	27.6	28.2	28.7
12H	4H	25.2	26.0	25.7	26.5	27.0	25.4	26.1	25.8	26.6	27.1
	6H	26.2	26.8	26.7	27.3	27.8	26.4	27.0	26.9	27.5	28.0
	8H	26.6	27.2	27.1	27.7	28.2	26.9	27.4	27.4	27.9	28.5
Variations with the observer position at spacings(CIE Pub.117):											
S = 1.0H		+ 0.1 / - 0.2					+ 0.1 / - 0.2				
1.5H		+ 0.2 / - 0.3					+ 0.2 / - 0.3				
2.0H		+ 0.1 / - 0.3					+ 0.1 / - 0.3				

CIE Pub.117, 158.0 lm Total Lamp Luminous Flux Correct (8log(F/F0) = -6.4)
Area: 0.0165 m2

C Range: 0 - 360DEG
C Interval: 30.0DEG
Test Speed: HIGH
Temperature:25.3℃
Operators:
Test Date:2025-05-19

γ Range: 0 - 180DEG
γ Interval: 1.0DEG
Test System:EVERFINE GO-2000B_V1 SYSTEM V2.00.488
Humidity:65.0%
Test Distance:6.360m [K=1.0000]
Remarks:

UTILIZATION FACTORS TABLE

Test:U:24.00V I:0.5187A P:12.45W PF:1.000 Freq:0Hz Lamp Flux:158.016x1 lm		
NAME: SF28-24V-5050-72-R	TYPE:	WEIGHT:
SPEC.:	DIM.: Length=1m	SERIAL No.:
MFR.: OLympia lighting	SUR.:	Shielding Angle:

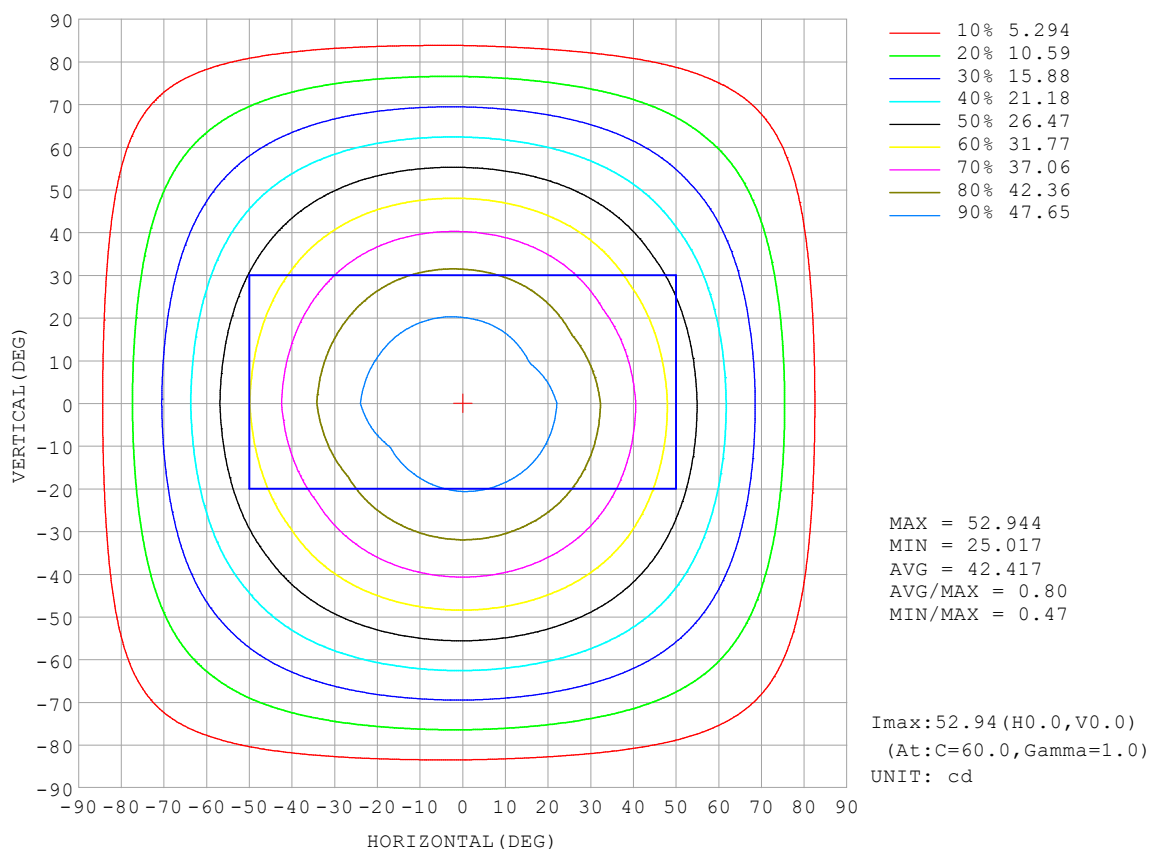
REFLECTANCE										
Ceiling	0.8	0.8	0.8	0.7	0.7	0.7	0.5	0.5	0.5	0
Walls	0.7	0.5	0.3	0.7	0.5	0.3	0.7	0.5	0.3	0
Working plane	0.2	0.2	0.2	0.2	0.2	0.2	0.2	0.2	0.2	0
ROOM INDEX	UTILIZATION FACTORS (PERCENT) $k(RI) \times RCR = 5$									
$k = 0.60$	56	44	37	55	44	37	53	43	37	30
0.80	65	54	46	64	53	46	62	52	45	38
1.00	74	62	55	72	62	54	70	63	54	46
1.25	81	70	62	79	69	62	76	67	61	53
1.50	86	75	68	84	74	68	80	72	66	58
2.00	93	84	77	91	82	76	86	80	74	65
2.50	97	89	82	94	87	81	90	84	79	69
3.00	100	93	87	98	91	86	93	88	83	73
4.00	104	98	93	102	96	92	97	92	88	78
5.00	107	102	97	104	99	95	99	95	92	81
ROOM INDEX	UF (total)									Direct
According to DIN EN 13032-2 2004			Suspended					SHRNOM = 1.25		

C Range: 0 - 360DEG
 C Interval: 30.0DEG
 Test Speed: HIGH
 Temperature: 25.3°C
 Operators:
 Test Date: 2025-05-19

γ Range: 0 - 180DEG
 γ Interval: 1.0DEG
 Test System: EVERFINE GO-2000B_V1 SYSTEM V2.00.488
 Humidity: 65.0%
 Test Distance: 6.360m [K=1.0000]
 Remarks:

ISOCANDELA DIAGRAM

Test:U:24.00V I:0.5187A P:12.45W PF:1.000 Freq:0Hz Lamp Flux:158.016x1 lm		
NAME: SF28-24V-5050-72-R	TYPE:	WEIGHT:
SPEC.:	DIM.: Length=1m	SERIAL No.:
MFR.: OLympia lighting	SUR.:	Shielding Angle:

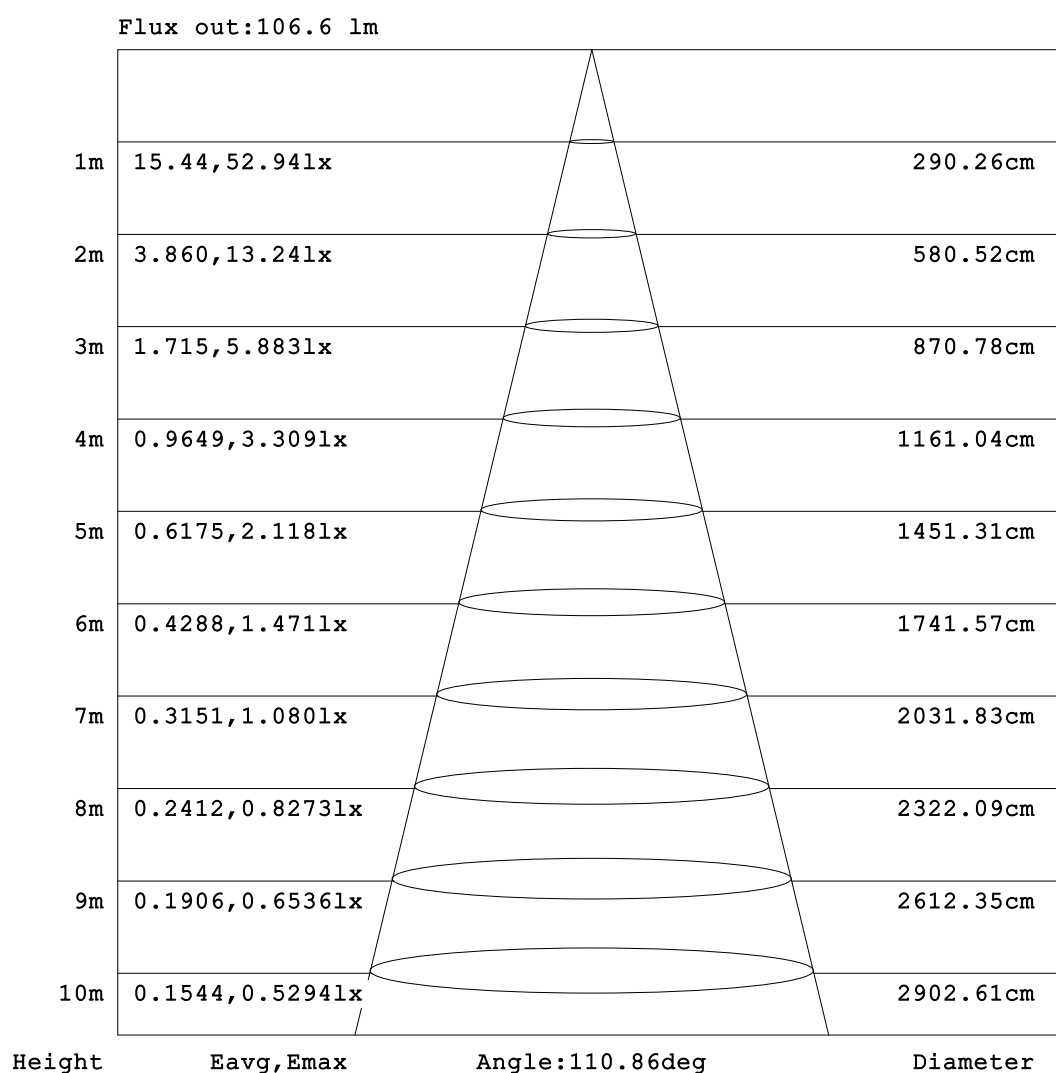


C Range: 0 - 360DEG
C Interval: 30.0DEG
Test Speed: HIGH
Temperature:25.3℃
Operators:
Test Date:2025-05-19

γ Range: 0 - 180DEG
γ Interval: 1.0DEG
Test System:EVERFINE GO-2000B_V1 SYSTEM V2.00.488
Humidity:65.0%
Test Distance:6.360m [K=1.0000]
Remarks:

AAI Figure

Test:U:24.00V I:0.5187A P:12.45W PF:1.000 Freq:0Hz Lamp Flux:158.016x1 lm		
NAME: SF28-24V-5050-72-R	TYPE:	WEIGHT:
SPEC.:	DIM.: Length=1m	SERIAL No.:
MFR.: OLympia lighting	SUR.:	Shielding Angle:



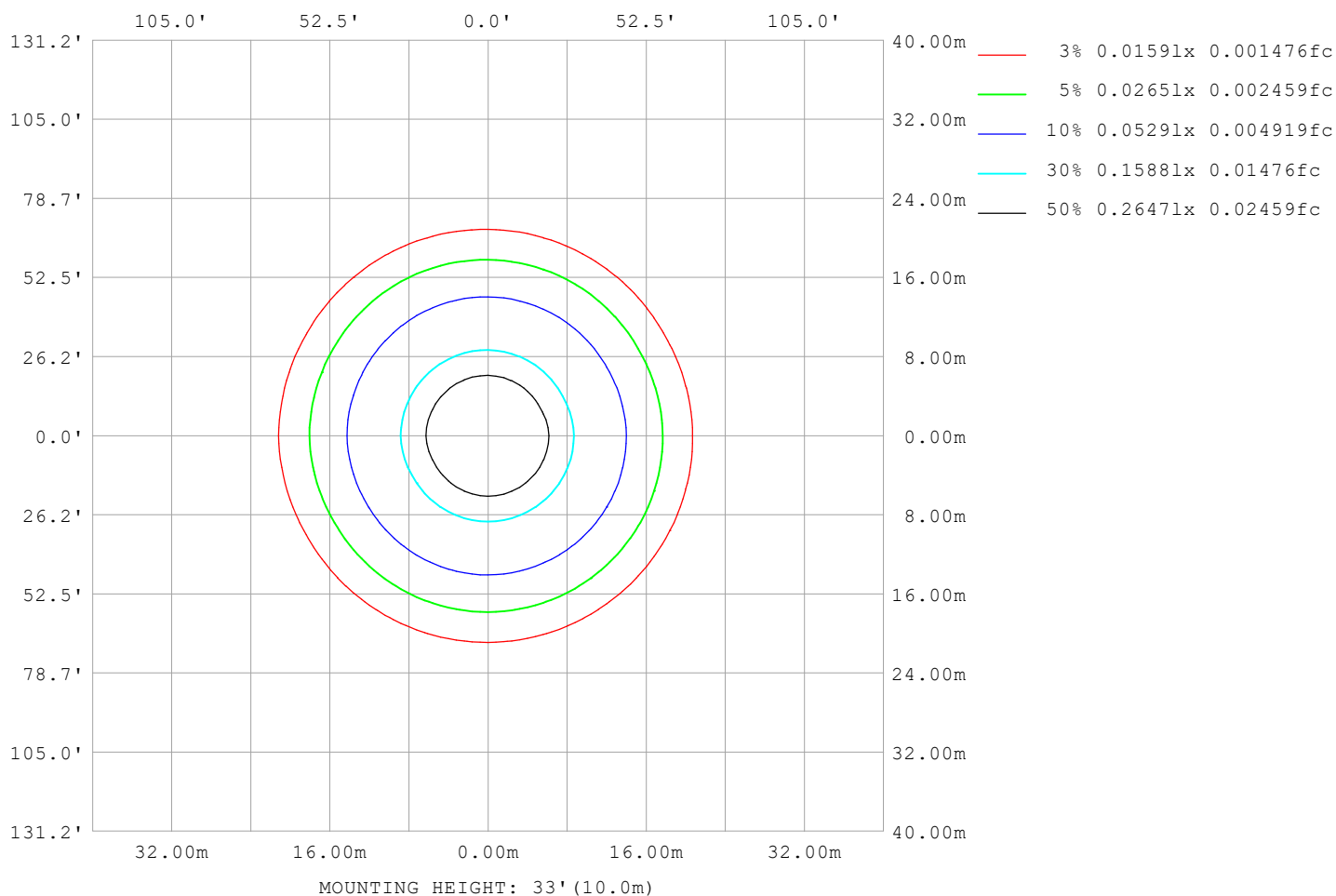
Note:The Curves indicate the illuminated area and the average illumination when the luminaire is at different distance.

C Range: 0 - 360DEG
C Interval: 30.0DEG
Test Speed: HIGH
Temperature:25.3℃
Operators:
Test Date:2025-05-19

γ Range: 0 - 180DEG
γ Interval: 1.0DEG
Test System:EVERFINE GO-2000B_V1 SYSTEM V2.00.488
Humidity:65.0%
Test Distance:6.360m [K=1.0000]
Remarks:

ISOLUX DIAGRAM

Test:U:24.00V I:0.5187A P:12.45W PF:1.000 Freq:0Hz Lamp Flux:158.016x1 lm		
NAME: SF28-24V-5050-72-R	TYPE:	WEIGHT:
SPEC.:	DIM.: Length=1m	SERIAL No.:
MFR.: OLympia lighting	SUR.:	Shielding Angle:



C Range: 0 - 360DEG
C Interval: 30.0DEG
Test Speed: HIGH
Temperature: 25.3°C
Operators:
Test Date: 2025-05-19

γ Range: 0 - 180DEG
γ Interval: 1.0DEG
Test System: EVERFINE GO-2000B_V1 SYSTEM V2.00.488
Humidity: 65.0%
Test Distance: 6.360m [K=1.0000]
Remarks:

LED Avg.L Report

Test:U:24.00V I:0.5187A P:12.45W PF:1.000 Freq:0Hz Lamp Flux:158.016x1 lm		
NAME: SF28-24V-5050-72-R	TYPE:	WEIGHT:
SPEC.:	DIM.: Length=1m	SERIAL No.:
MFR.: OLympia lighting	SUR.:	Shielding Angle:

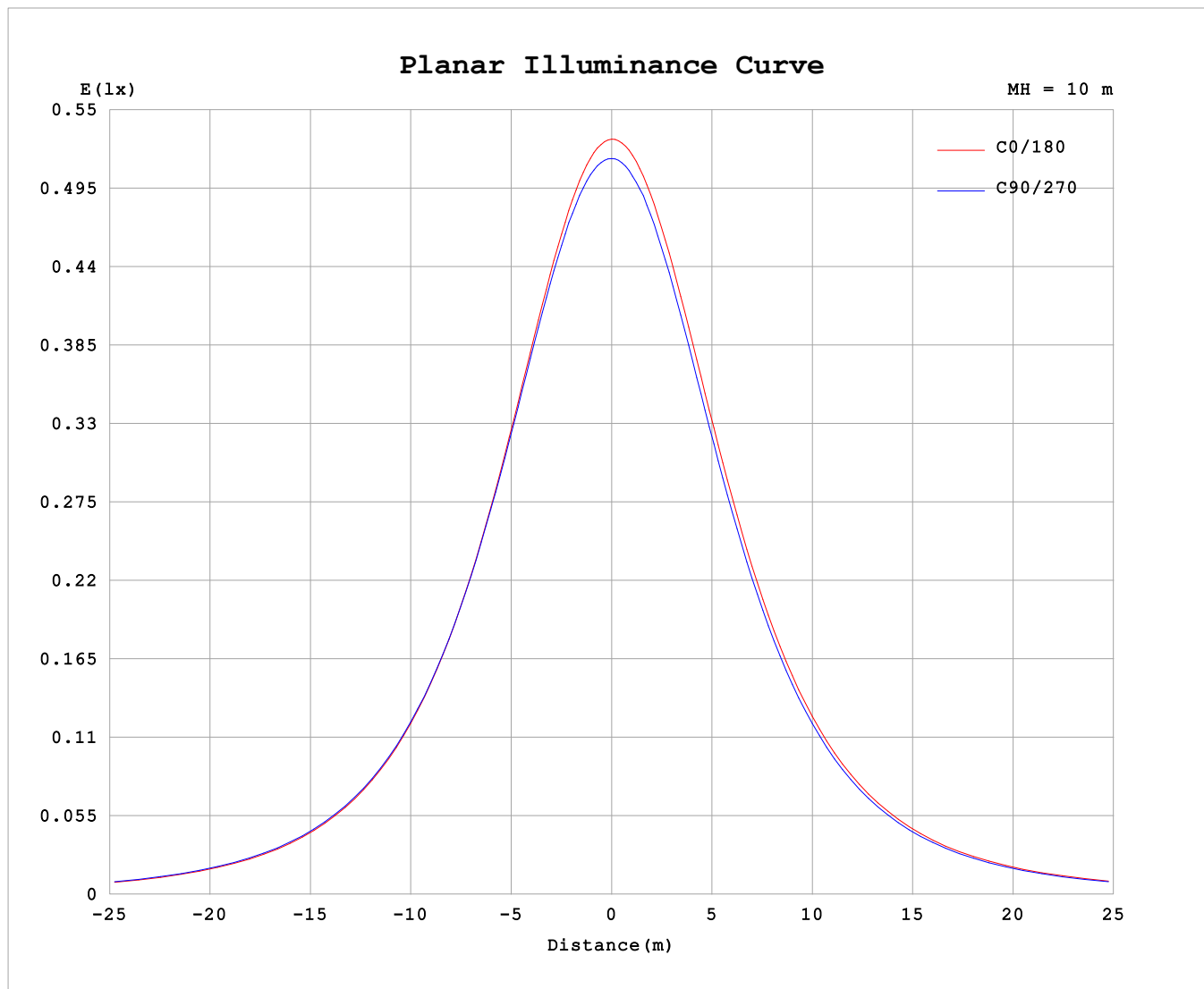
AvgL	cd/m2
L_0~180 (65) av	2726
L_0~180 (75) av	2677
L_0~180 (85) av	2829
L_90~270 (65) av	2778
L_90~270 (75) av	2758
L_90~270 (85) av	3002
L_45 (65) av	2755
L_45 (75) av	2714
L_45 (85) av	2893

Standard: GB/T 29293-2012

C Range: 0 - 360DEG
C Interval: 30.0DEG
Test Speed: HIGH
Temperature:25.3℃
Operators:
Test Date:2025-05-19

γ Range: 0 - 180DEG
γ Interval: 1.0DEG
Test System:EVERFINE GO-2000B_V1 SYSTEM V2.00.488
Humidity:65.0%
Test Distance:6.360m [K=1.0000]
Remarks:

Planar Illuminance Curve



C Range: 0 - 360DEG
C Interval: 30.0DEG
Test Speed: HIGH
Temperature: 25.3 °C
Operators:
Test Date: 2025-05-19

γ Range: 0 - 180DEG
 γ Interval: 1.0DEG
Test System: EVERFINE GO-2000B_V1 SYSTEM V2.00.488
Humidity: 65.0%
Test Distance: 6.360m [K=1.0000]
Remarks:

LUMINOUS DISTRIBUTION INTENSITY DATA

Test:U:24.00V I:0.5187A P:12.45W PF:1.000 Freq:0Hz Lamp Flux:158.016x1 lm																	
NAME: SF28-24V-5050-72-R									TYPE:						WEIGHT:		
SPEC.:									DIM.: Length=1m						SERIAL No.:		
MFR.: OLYMPIA lighting									SUR.:						Shielding Angle:		

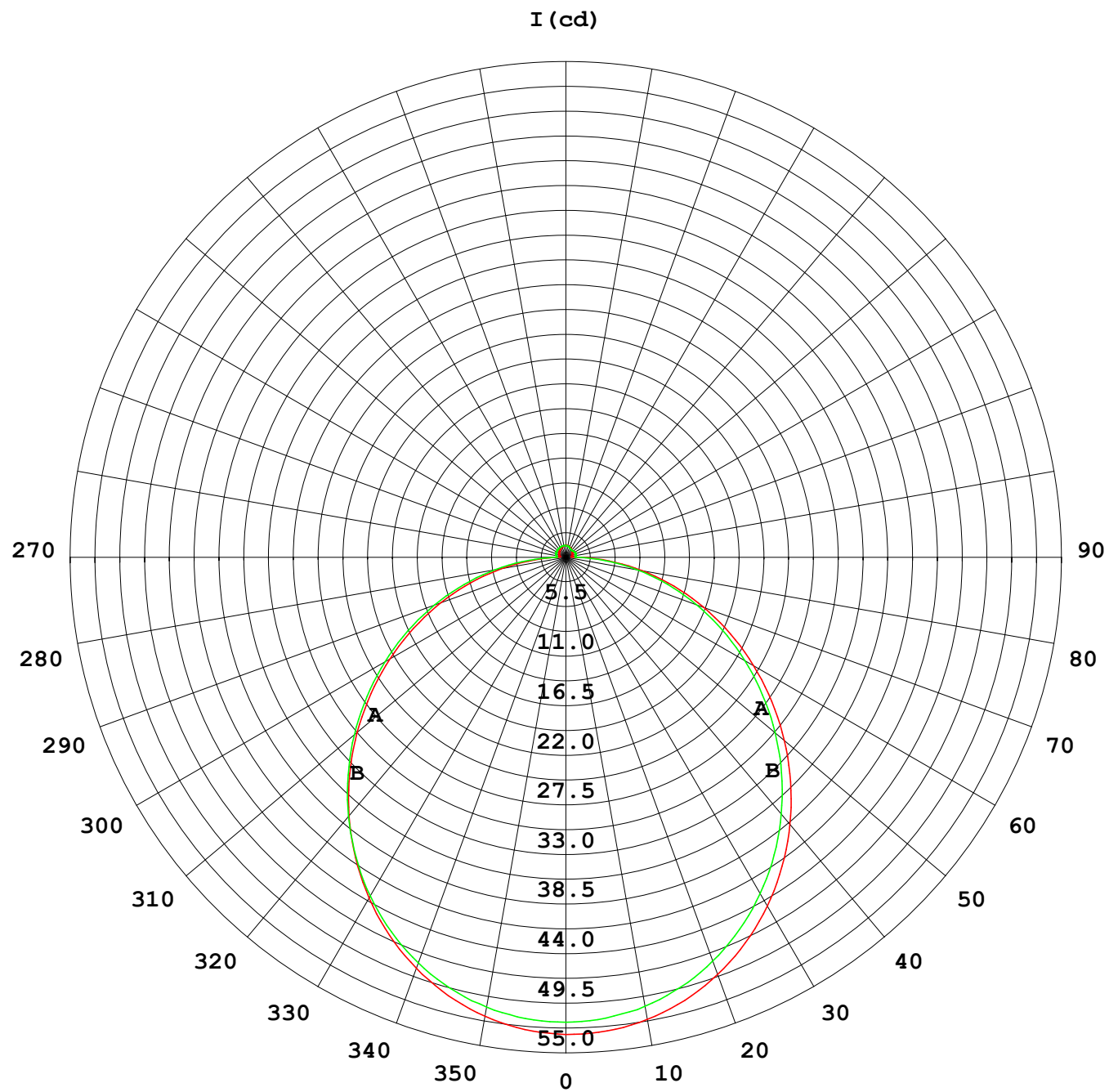
Table--1

UNIT: cd

C (DEG) γ (DEG)	0	30	60	90	120	150	180	210	240	270	300	330						
0	51.9	51.9	51.9	51.9	51.9	51.9	51.9	51.9	51.9	51.9	51.9	51.9						
5	51.5	51.6	51.6	51.7	51.7	51.7	51.7	51.7	51.6	51.6	51.6	51.6						
10	50.7	50.8	50.9	51.0	51.0	51.0	51.0	50.9	50.9	50.9	50.8	50.7						
15	49.3	49.6	49.6	49.8	49.9	49.8	49.9	49.8	49.8	49.6	49.6	49.4						
20	47.5	47.8	48.0	48.2	48.2	48.3	48.2	48.2	48.1	47.9	47.8	47.6						
25	45.4	45.7	45.9	46.1	46.2	46.2	46.2	46.1	46.1	45.9	45.7	45.5						
30	42.8	43.2	43.4	43.7	43.7	43.8	43.8	43.7	43.6	43.3	43.2	42.9						
35	39.9	40.3	40.6	40.8	40.9	41.0	41.0	40.9	40.8	40.5	40.4	40.0						
40	36.7	37.1	37.4	37.7	37.9	37.9	37.9	37.8	37.7	37.4	37.2	36.9						
45	33.2	33.7	34.0	34.4	34.5	34.6	34.6	34.4	34.3	34.0	33.8	33.4						
50	29.6	30.1	30.5	30.8	31.0	31.0	31.0	30.9	30.8	30.5	30.2	29.9						
55	25.9	26.3	26.7	27.1	27.2	27.3	27.3	27.2	27.1	26.8	26.5	26.1						
60	22.1	22.5	22.9	23.3	23.4	23.5	23.6	23.4	23.4	23.1	22.8	22.3						
65	18.3	18.7	19.1	19.5	19.6	19.7	19.8	19.6	19.6	19.3	18.9	18.5						
70	14.5	14.8	15.2	15.6	15.8	15.9	16.0	15.8	15.8	15.5	15.1	14.7						
75	10.7	11.0	11.4	11.8	11.9	12.1	12.2	12.0	12.0	11.8	11.4	11.0						
80	7.01	7.31	7.60	7.98	8.16	8.30	8.41	8.30	8.27	8.09	7.65	7.26						
85	3.41	3.66	3.89	4.21	4.40	4.58	4.73	4.60	4.59	4.43	3.97	3.62						
90	1.20	1.24	1.16	1.01	1.28	1.60	1.73	1.52	1.35	1.06	1.09	1.14						
95	0.68	0.82	0.96	1.06	0.98	0.82	0.63	0.66	0.88	1.06	0.84	0.63						
100	0.70	0.87	1.01	1.12	1.02	0.85	0.64	0.64	0.92	1.10	0.88	0.65						
105	0.76	0.91	1.05	1.17	1.07	0.90	0.68	0.69	0.95	1.13	0.90	0.69						
110	0.81	0.95	1.10	1.20	1.10	0.94	0.73	0.73	0.98	1.16	0.93	0.73						
115	0.86	1.00	1.12	1.23	1.13	0.99	0.77	0.77	0.98	1.18	0.92	0.78						
120	0.90	1.03	1.15	1.25	1.15	1.03	0.82	0.82	0.98	1.18	0.92	0.82						
125	0.94	1.06	1.17	1.26	1.18	1.06	0.87	0.85	0.98	1.12	0.93	0.85						
130	0.98	1.10	1.19	1.27	1.20	1.10	0.91	0.89	0.99	1.07	0.93	0.90						
135	1.02	1.12	1.20	1.27	1.21	1.13	0.95	0.94	0.99	1.04	0.95	0.90						
140	1.06	1.16	1.22	1.28	1.23	1.16	1.00	1.00	1.02	1.02	0.97	0.93						
145	1.10	1.18	1.23	1.29	1.24	1.19	1.05	1.04	1.06	1.02	1.01	0.98						
150	1.14	1.21	1.24	1.30	1.25	1.22	1.10	1.09	1.12	1.05	1.06	1.03						
155	1.17	1.23	1.26	1.31	1.28	1.25	1.15	1.14	1.17	1.12	1.15	1.07						
160	1.21	1.26	1.27	1.32	1.29	1.27	1.19	1.18	1.22	1.18	1.20	1.12						
165	1.25	1.28	1.29	1.33	1.30	1.29	1.24	1.23	1.27	1.24	1.25	1.17						
170	1.27	1.30	1.29	1.33	1.30	1.31	1.28	1.26	1.30	1.27	1.30	1.25						
175	1.29	1.32	1.30	1.33	1.31	1.32	1.30	1.29	1.33	1.31	1.32	1.28						
180	1.30	1.32	1.32	1.33	1.32	1.32	1.31	1.30	1.33	1.32	1.33	1.31						

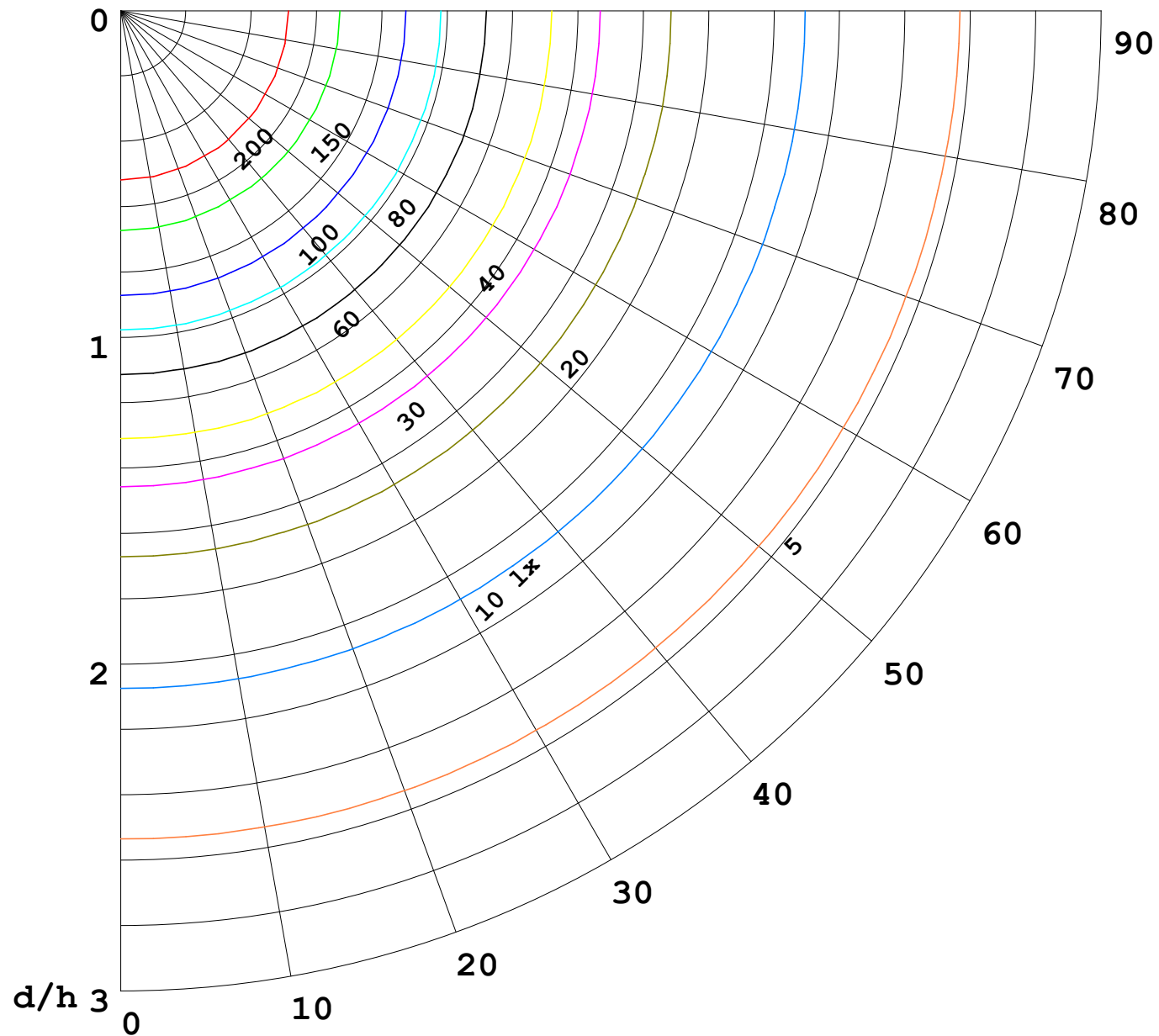
C Range: 0 - 360DEG
C Interval: 30.0DEG
Test Speed: HIGH
Temperature:25.3℃
Operators:
Test Date:2025-05-19

γ Range: 0 - 180DEG
γ Interval: 1.0DEG
Test System:EVERFINE GO-2000B_V1 SYSTEM V2.00.488
Humidity:65.0%
Test Distance:6.360m [K=1.0000]
Remarks:



1000 lm

$\kappa = 1$



F = 1000 lm
 K = 0.7
 Hcc = 0.8 m
 Hfc = 0.0 m
 Eave = 100 lx

	Pcc	Pw	Pfc
—————	70	50	30
—————	50	30	20

