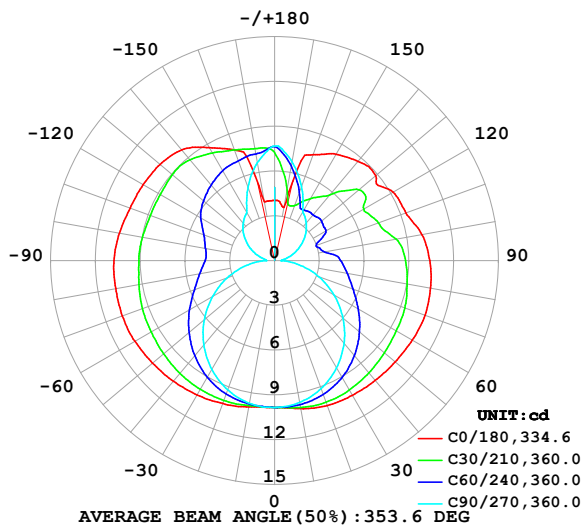


LUMINAIRE PHOTOMETRIC TEST REPORT

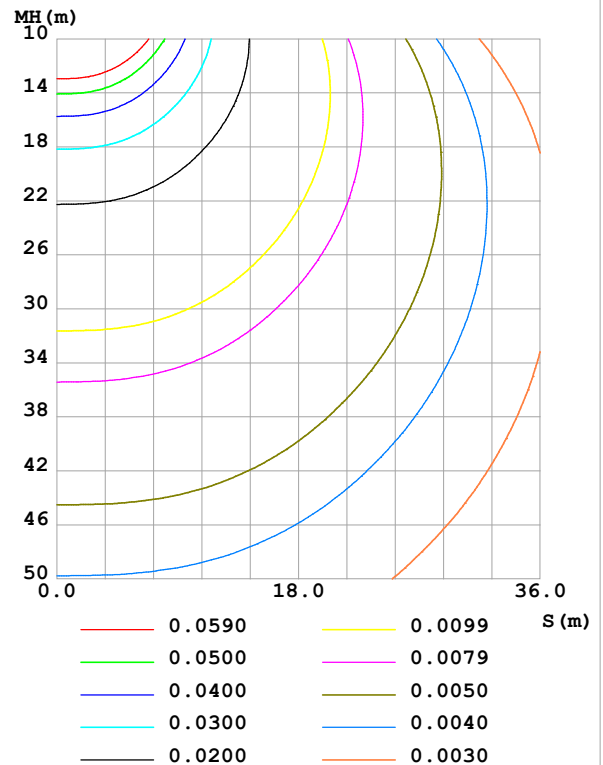
Test:U:24.00V I:0.6966A P:16.72W PF:1.000 Freq:0Hz Lamp Flux:89.4229x1 lm		
NAME: SF24-24V-2835-288-U2-B	TYPE:	WEIGHT:
SPEC.:	DIM.: Length=1m	SERIAL No.:
MFR.: OLympia lighting	SUR.:	Shielding Angle:

DATA OF LAMP		PHOTOMETRIC DATA				Eff: 5.35 lm/W
MODEL	2835	I _{max} (cd)	10.86	S/MH(C0/180)	1.63	
NOMINAL POWER(W)	16	LOR(%)	100.0	S/MH(C90/270)	1.27	
RATED VOLTAGE(V)	24	TOTAL FLUX(lm)	89.423	η UP,DN(C0-180)	21.4,28.0	
NOMINAL FLUX(lm)	89.4229	CIE CLASS	DIFFUSE	η UP,DN(C180-360)	22.3,28.3	
LAMPS INSIDE	1	η up (%)	43.7	CIBSE SHR NOM	1.75	
TEST VOLTAGE(V)		η down (%)	56.3	CIBSE SHR MAX	1.75	

LUMINOUS INTENSITY DISTRIBUTION DIAGRAM



C0 PLANE ISOLUX DIAGRAM (UNIT:lx)



C Range: 0 - 360DEG
C Interval: 30.0DEG
Test Speed: HIGH
Temperature:25.3℃
Operators:
Test Date:2025-03-03

γ Range: 0 - 180DEG
γ Interval: 1.0DEG
Test System:EVERFINE GO-2000B_V1 SYSTEM V2.00.488
Humidity:65.0%
Test Distance:6.360m [K=1.0000]
Remarks:

ZONAL FLUX DIAGRAM

ZONAL FLUX DIAGRAM:

γ	C0	C45	C90	C135	C180	C225	C270	C315	γ	Φ zone	Φ total	%lum, lamp
10	10.07	9.895	9.656	9.845	9.960	9.813	9.709	9.895	0- 10	0.9404	0.9404	1.05,1.05
20	10.33	9.820	9.127	9.745	10.19	9.744	9.213	9.862	10- 20	2.786	3.726	4.17,4.17
30	10.42	9.537	8.309	9.465	10.40	9.500	8.418	9.603	20- 30	4.458	8.184	9.15,9.15
40	10.49	9.080	7.237	9.055	10.56	9.098	7.379	9.150	30- 40	5.817	14.00	15.7,15.7
50	10.56	8.521	5.983	8.535	10.69	8.605	6.149	8.605	40- 50	6.789	20.79	23.2,23.2
60	10.66	7.949	4.593	7.986	10.81	8.076	4.793	8.025	50- 60	7.358	28.15	31.5,31.5
70	10.72	7.449	3.136	7.477	10.86	7.584	3.374	7.513	60- 70	7.573	35.72	39.9,39.9
80	10.61	6.990	1.668	7.046	10.80	7.173	1.931	7.054	70- 80	7.483	43.21	48.3,48.3
90	10.40	6.610	0.4413	6.760	10.76	6.889	0.5987	6.675	80- 90	7.159	50.36	56.3,56.3
100	10.03	5.848	0.7232	6.732	10.57	6.865	0.7688	6.169	90-100	6.819	57.18	63.9,63.9
110	9.367	5.200	1.341	6.902	10.30	6.965	1.372	5.731	100-110	6.385	63.57	71.1,71.1
120	9.178	5.448	2.024	7.258	10.17	7.290	2.034	5.881	110-120	6.069	69.64	77.9,77.9
130	8.852	5.769	2.694	7.509	10.02	7.594	2.699	5.872	120-130	5.730	75.37	84.3,84.3
140	8.699	4.878	3.301	7.569	9.686	7.730	3.279	5.216	130-140	4.976	80.34	89.8,89.8
150	8.238	4.353	3.797	7.506	8.743	7.656	3.735	4.571	140-150	3.898	84.24	94.2,94.2
160	7.556	4.405	5.292	7.416	7.893	7.511	5.240	4.643	150-160	2.806	87.05	97.3,97.3
170	3.634	5.636	6.732	7.501	4.006	7.444	6.666	5.734	160-170	1.762	88.81	99.3,99.3
180	4.040	7.427	7.685	7.423	4.031	7.437	7.691	7.413	170-180	0.6145	89.42	100,100
DEG	LUMINOUS INTENSITY:cd									UNIT:lm		

Conical surface Flux(90deg): 17.301 lm

%lum = 19.3%

%lamp = 19.3%

Conical surface Flux(130deg): 31.928 lm

%lum = 35.7%

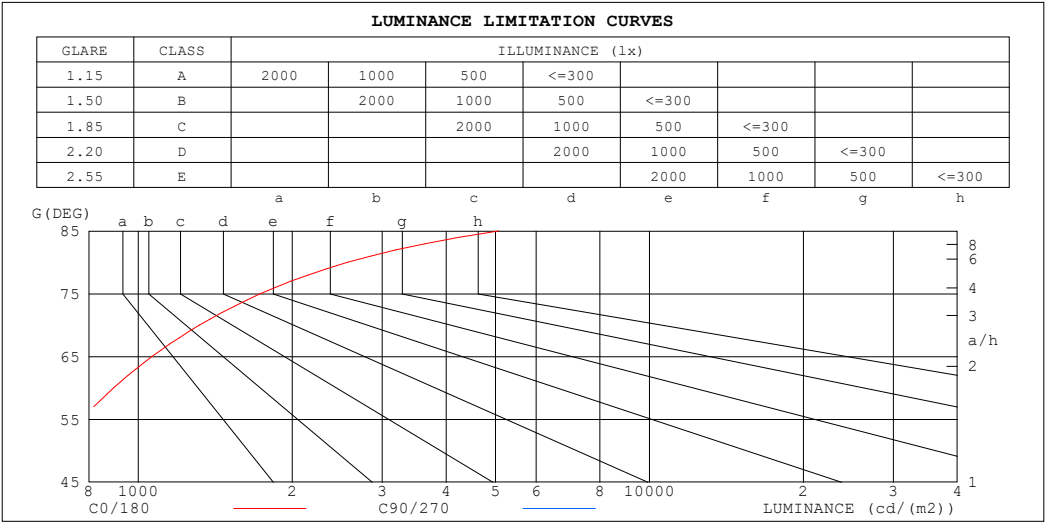
%lamp = 35.7%

C Range: 0 - 360DEG
 C Interval: 30.0DEG
 Test Speed: HIGH
 Temperature:25.3℃
 Operators:
 Test Date:2025-03-03

γ Range: 0 - 180DEG
 γ Interval: 1.0DEG
 Test System:EVERFINE GO-2000B_V1 SYSTEM V2.00.488
 Humidity:65.0%
 Test Distance:6.360m [K=1.0000]
 Remarks:

LUMINANCE LIMITATION CURVES

Test:U:24.00V I:0.6966A P:16.72W PF:1.000 Freq:0Hz Lamp Flux:89.4229x1 lm		
NAME: SF24-24V-2835-288-U2-B	TYPE:	WEIGHT:
SPEC.:	DIM.: Length=1m	SERIAL No.:
MFR.: OLympia lighting	SUR.:	Shielding Angle:



LUMINANCE cd/(m2)		
G (DEG)	C0/180	C90/270
85	5071	453
80	2564	398
75	1731	384
70	1316	380
65	1064	380
60	895	381
55	776	383
50	689	386
45	625	389

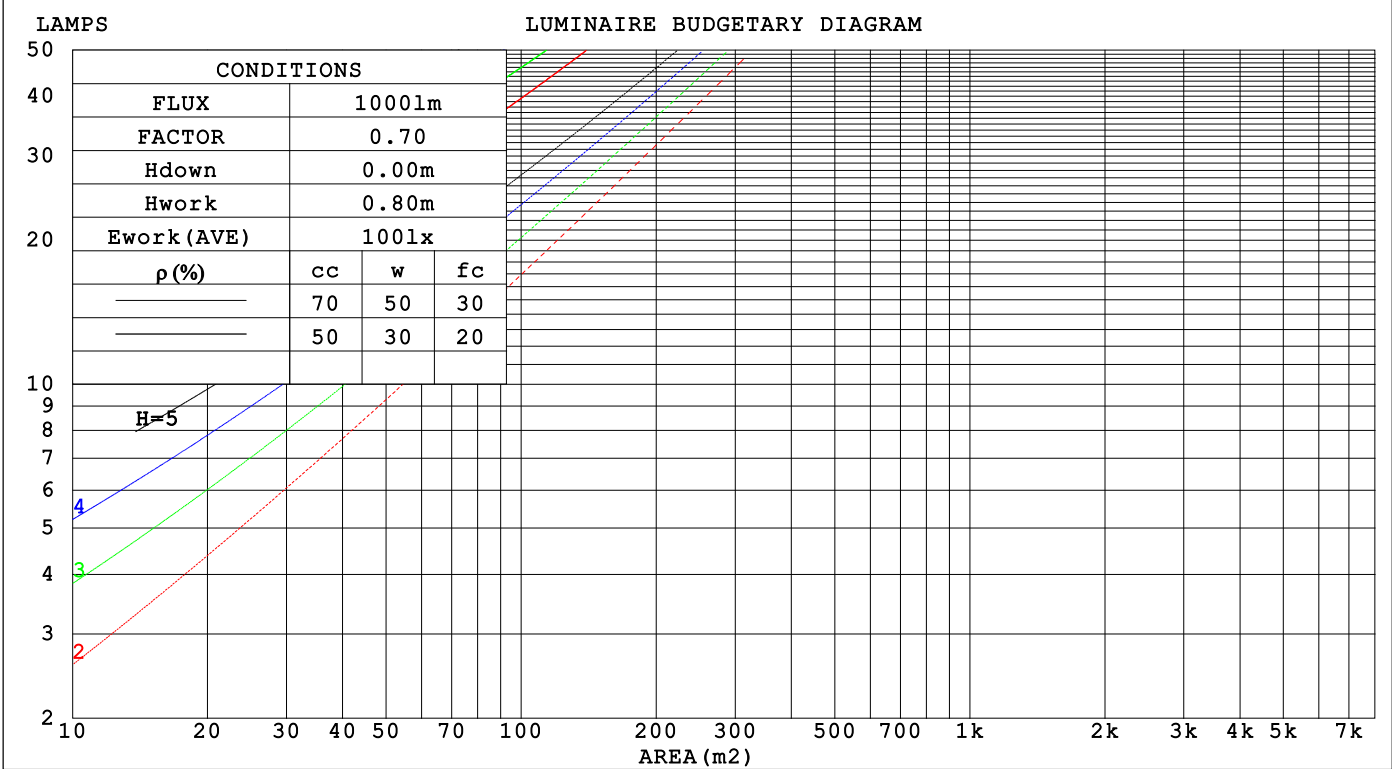
C Range: 0 - 360DEG
C Interval: 30.0DEG
Test Speed: HIGH
Temperature:25.3℃
Operators:
Test Date:2025-03-03

γ Range: 0 - 180DEG
γ Interval: 1.0DEG
Test System:EVERFINE GO-2000B_V1 SYSTEM V2.00.488
Humidity:65.0%
Test Distance:6.360m [K=1.0000]
Remarks:

CU AND LUMINAIRE BUDGETARY ESTIMATE DIAGRAM

Test:U:24.00V I:0.6966A P:16.72W PF:1.000 Freq:0Hz																	
Lamp Flux:89.4229x1 lm																	
NAME: SF24-24V-2835-288-U2-B									TYPE:						WEIGHT:		
SPEC.:									DIM.: Length=1m						SERIAL No.:		
MFR.: OLYMPIA lighting									SUR.:						Shielding Angle:		

pcc	80%			70%			50%			30%			10%			0
pw	50%	30%	10%	50%	30%	10%	50%	30%	10%	50%	30%	10%	50%	30%	10%	0
pfc	20%			20%			20%			20%			20%			0
RCR	RCR:Room Cavity Ratio Coefficients of Utilization(CU)															
0.0	1.09	1.09	1.09	1.01	1.01	1.01	.87	.87	.87	.74	.74	.74	.62	.62	.62	.56
1.0	.89	.84	.79	.83	.78	.74	.70	.67	.63	.59	.56	.54	.49	.47	.45	.40
2.0	.76	.68	.62	.70	.64	.58	.60	.54	.50	.50	.46	.42	.41	.38	.35	.30
3.0	.66	.57	.50	.61	.53	.47	.52	.45	.40	.43	.38	.34	.35	.31	.28	.24
4.0	.57	.48	.41	.53	.45	.39	.45	.39	.33	.38	.33	.28	.31	.27	.23	.20
5.0	.51	.42	.35	.47	.39	.33	.40	.33	.28	.33	.28	.24	.27	.23	.20	.17
6.0	.45	.36	.30	.42	.34	.28	.36	.29	.24	.30	.25	.21	.25	.20	.17	.14
7.0	.41	.32	.26	.38	.30	.24	.32	.26	.21	.27	.22	.18	.22	.18	.15	.12
8.0	.37	.28	.23	.34	.27	.21	.29	.23	.18	.25	.20	.16	.20	.16	.13	.11
9.0	.33	.25	.20	.31	.24	.19	.27	.21	.16	.23	.18	.14	.19	.15	.12	.10
10.0	.31	.23	.18	.29	.21	.17	.25	.19	.15	.21	.16	.13	.17	.13	.11	.09



C Range: 0 - 360DEG
C Interval: 30.0DEG
Test Speed: HIGH
Temperature:25.3℃
Operators:
Test Date:2025-03-03

γ Range: 0 - 180DEG
γ Interval: 1.0DEG
Test System:EVERFINE GO-2000B_V1 SYSTEM V2.00.488
Humidity:65.0%
Test Distance:6.360m [K=1.0000]
Remarks:

WEC AND CCEC

Test:U:24.00V I:0.6966A P:16.72W PF:1.000 Freq:0Hz Lamp Flux:89.4229x1 lm		
NAME: SF24-24V-2835-288-U2-B	TYPE:	WEIGHT:
SPEC.:	DIM.: Length=1m	SERIAL No.:
MFR.: OLympia lighting	SUR.:	Shielding Angle:

pcc	80%			70%			50%			30%			10%			0														
pw	50%	30%	10%	50%	30%	10%	50%	30%	10%	50%	30%	10%	50%	30%	10%	0														
pfc	20%			20%			20%			20%			20%			0														
RCR	RCR:Room Cavity Ratio															Wall Exitance Coefficients(WEC)														
0.0																														
1.0	.387	.220	.070	.366	.209	.066	.328	.188	.060	.293	.169	.054	.260	.151	.049															
2.0	.329	.180	.055	.310	.171	.053	.275	.153	.047	.243	.136	.043	.213	.120	.038															
3.0	.289	.154	.046	.272	.146	.044	.240	.130	.040	.211	.116	.035	.183	.102	.031															
4.0	.259	.135	.040	.244	.128	.038	.215	.114	.034	.187	.101	.030	.162	.088	.027															
5.0	.235	.120	.035	.221	.113	.033	.194	.101	.030	.169	.089	.027	.146	.078	.023															
6.0	.215	.108	.031	.202	.102	.029	.177	.091	.026	.154	.080	.024	.132	.070	.021															
7.0	.198	.098	.028	.186	.093	.026	.163	.082	.024	.142	.073	.021	.121	.063	.019															
8.0	.184	.090	.025	.172	.085	.024	.151	.076	.022	.131	.066	.019	.112	.058	.017															
9.0	.171	.083	.023	.161	.078	.022	.141	.070	.020	.122	.061	.018	.105	.053	.015															
10.0	.160	.077	.021	.150	.073	.020	.132	.065	.018	.114	.057	.016	.098	.049	.014															

pcc	80%			70%			50%			30%			10%			0
pw	50%	30%	10%	50%	30%	10%	50%	30%	10%	50%	30%	10%	50%	30%	10%	0
pfc	20%			20%			20%			20%			20%			0
RCR	RCR:Room Cavity Ratio						Ceiling Cavity Exitance Coefficients (CCEC)									
0.0	.523	.523	.523	.447	.447	.447	.305	.305	.305	.175	.175	.175	.056	.056	.056	
1.0	.521	.491	.464	.446	.421	.399	.305	.290	.276	.176	.168	.161	.056	.054	.052	
2.0	.515	.470	.431	.441	.404	.373	.302	.280	.260	.174	.163	.152	.056	.053	.050	
3.0	.508	.454	.411	.435	.392	.356	.299	.272	.250	.173	.159	.147	.055	.052	.048	
4.0	.500	.442	.398	.429	.382	.346	.295	.266	.243	.171	.156	.144	.055	.051	.047	
5.0	.493	.433	.389	.424	.375	.338	.292	.262	.239	.169	.154	.142	.054	.050	.047	
6.0	.486	.426	.382	.418	.369	.333	.288	.258	.236	.167	.152	.140	.054	.050	.046	
7.0	.479	.419	.377	.412	.364	.329	.285	.255	.233	.166	.150	.139	.053	.049	.046	
8.0	.473	.414	.374	.407	.359	.326	.282	.252	.231	.164	.149	.138	.053	.049	.046	
9.0	.467	.410	.371	.402	.356	.324	.279	.250	.230	.162	.148	.137	.053	.048	.045	
10.0	.461	.406	.369	.398	.352	.322	.276	.248	.229	.161	.147	.136	.052	.048	.045	

C Range: 0 - 360DEG
C Interval: 30.0DEG
Test Speed: HIGH
Temperature:25.3℃
Operators:
Test Date:2025-03-03

γ Range: 0 - 180DEG
γ Interval: 1.0DEG
Test System:EVERFINE GO-2000B_V1 SYSTEM V2.00.488
Humidity:65.0%
Test Distance:6.360m [K=1.0000]
Remarks:

UGR(Unified Glare Rating) Table

Test:U:24.00V I:0.6966A P:16.72W PF:1.000 Freq:0Hz Lamp Flux:89.4229x1 lm										
NAME: SF24-24V-2835-288-U2-B					TYPE:			WEIGHT:		
SPEC.:					DIM.: Length=1m			SERIAL No.:		
MFR.: OLympia lighting					SUR.:			Shielding Angle:		
ceiling/cavity	0.7	0.7	0.5	0.5	0.3	0.7	0.7	0.5	0.5	0.3
walls	0.5	0.3	0.5	0.3	0.3	0.5	0.3	0.5	0.3	0.3
working plane	0.2	0.2	0.2	0.2	0.2	0.2	0.2	0.2	0.2	0.2
Room dimensions	Viewed crosswise					Viewed endwise				
x = 2H y = 2H	19.1	20.2	19.9	21.1	22.1	15.7	16.8	16.5	17.6	18.7
3H	22.4	23.4	23.2	24.3	25.3	17.5	18.5	18.3	19.3	20.4
4H	24.3	25.2	25.1	26.1	27.2	18.3	19.3	19.1	20.1	21.2
6H	26.4	27.3	27.2	28.1	29.2	19.0	19.9	19.9	20.8	21.9
8H	27.5	28.4	28.4	29.3	30.4	19.3	20.2	20.2	21.1	22.2
12H	28.8	29.7	29.7	30.6	31.7	19.6	20.4	20.4	21.3	22.4
4H 2H	19.6	20.6	20.5	21.5	22.5	17.3	18.3	18.1	19.1	20.2
3H	23.2	24.0	24.1	24.9	26.1	19.3	20.1	20.2	21.0	22.2
4H	25.3	26.0	26.1	26.9	28.1	20.3	21.1	21.2	22.0	23.2
6H	27.5	28.2	28.4	29.1	30.3	21.3	21.9	22.2	22.9	24.1
8H	28.8	29.4	29.7	30.4	31.6	21.7	22.3	22.6	23.2	24.4
12H	30.3	30.8	31.2	31.8	33.0	22.0	22.6	23.0	23.6	24.8
8H 4H	25.6	26.2	26.5	27.1	28.3	21.9	22.6	22.8	23.5	24.7
6H	28.2	28.7	29.1	29.7	30.9	23.3	23.8	24.2	24.8	26.0
8H	29.7	30.2	30.6	31.1	32.4	23.9	24.4	24.9	25.4	26.6
12H	31.4	31.8	32.4	32.8	34.1	24.5	24.9	25.5	25.9	27.2
12H 4H	25.6	26.2	26.5	27.1	28.3	22.5	23.1	23.4	24.0	25.3
6H	28.3	28.8	29.3	29.7	31.0	24.1	24.6	25.1	25.6	26.8
8H	29.9	30.3	30.9	31.3	32.6	25.0	25.4	25.9	26.4	27.6
Variations with the observer position at spacings(CIE Pub.117):										
S = 1.0H	+ 0.1 / - 0.1					+ 0.1 / - 0.1				
1.5H	+ 0.2 / - 0.3					+ 0.2 / - 0.2				
2.0H	+ 0.3 / - 0.3					+ 0.3 / - 0.4				

CIE Pub.117, 89.42 lm Total Lamp Luminous Flux Correct (8log(F/F0) = -8.4)
Area: 0.024 m2

C Range: 0 - 360DEG
C Interval: 30.0DEG
Test Speed: HIGH
Temperature:25.3℃
Operators:
Test Date:2025-03-03

γ Range: 0 - 180DEG
γ Interval: 1.0DEG
Test System:EVERFINE GO-2000B_V1 SYSTEM V2.00.488
Humidity:65.0%
Test Distance:6.360m [K=1.0000]
Remarks:

UTILIZATION FACTORS TABLE

Test:U:24.00V I:0.6966A P:16.72W PF:1.000 Freq:0Hz Lamp Flux:89.4229x1 lm		
NAME: SF24-24V-2835-288-U2-B	TYPE:	WEIGHT:
SPEC.:	DIM.: Length=1m	SERIAL No.:
MFR.: OLympia lighting	SUR.:	Shielding Angle:

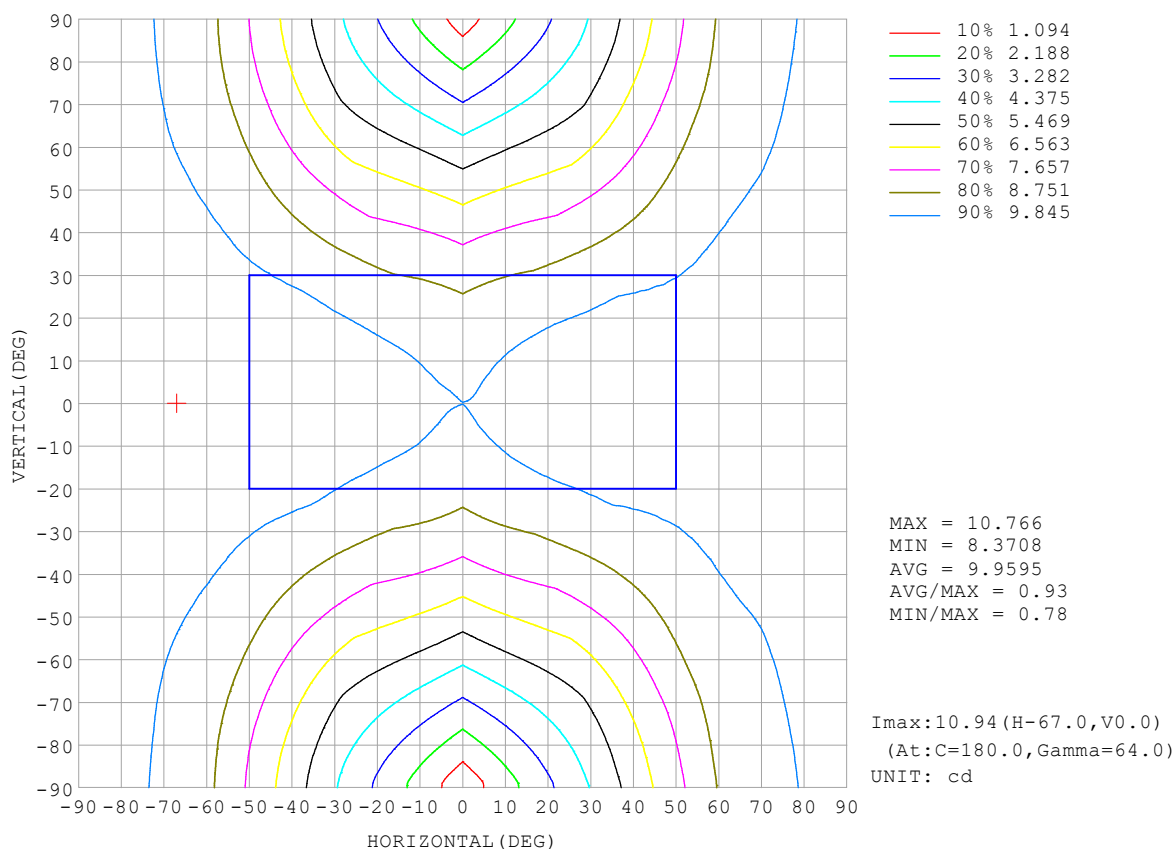
REFLECTANCE										
Ceiling	0.8	0.8	0.8	0.7	0.7	0.7	0.5	0.5	0.5	0
Walls	0.7	0.5	0.3	0.7	0.5	0.3	0.7	0.5	0.3	0
Working plane	0.2	0.2	0.2	0.2	0.2	0.2	0.2	0.2	0.2	0
ROOM INDEX	UTILIZATION FACTORS (PERCENT) $k(RI) \times RCR = 5$									
$k = 0.60$	40	27	20	38	26	20	34	24	19	11
0.80	48	35	27	46	34	26	41	31	24	15
1.00	56	42	34	53	40	32	47	38	30	19
1.25	63	49	40	59	47	38	52	42	35	22
1.50	68	55	46	63	52	44	55	46	39	25
2.00	75	63	54	70	60	52	61	53	46	29
2.50	80	69	60	75	65	57	65	57	51	32
3.00	84	74	66	78	69	62	68	61	55	35
4.00	89	80	73	83	75	69	71	65	60	38
5.00	92	85	78	86	79	73	74	69	64	41
ROOM INDEX	UF (total)									Direct
According to DIN EN 13032-2 2004			Suspended					SHRNOM = 1.25		

C Range: 0 - 360DEG
 C Interval: 30.0DEG
 Test Speed: HIGH
 Temperature: 25.3 °C
 Operators:
 Test Date: 2025-03-03

γ Range: 0 - 180DEG
 γ Interval: 1.0DEG
 Test System: EVERFINE GO-2000B_V1 SYSTEM V2.00.488
 Humidity: 65.0%
 Test Distance: 6.360m [K=1.0000]
 Remarks:

ISOCANDELA DIAGRAM

Test:U:24.00V I:0.6966A P:16.72W PF:1.000 Freq:0Hz Lamp Flux:89.4229x1 lm		
NAME: SF24-24V-2835-288-U2-B	TYPE:	WEIGHT:
SPEC.:	DIM.: Length=1m	SERIAL No.:
MFR.: OLympia lighting	SUR.:	Shielding Angle:

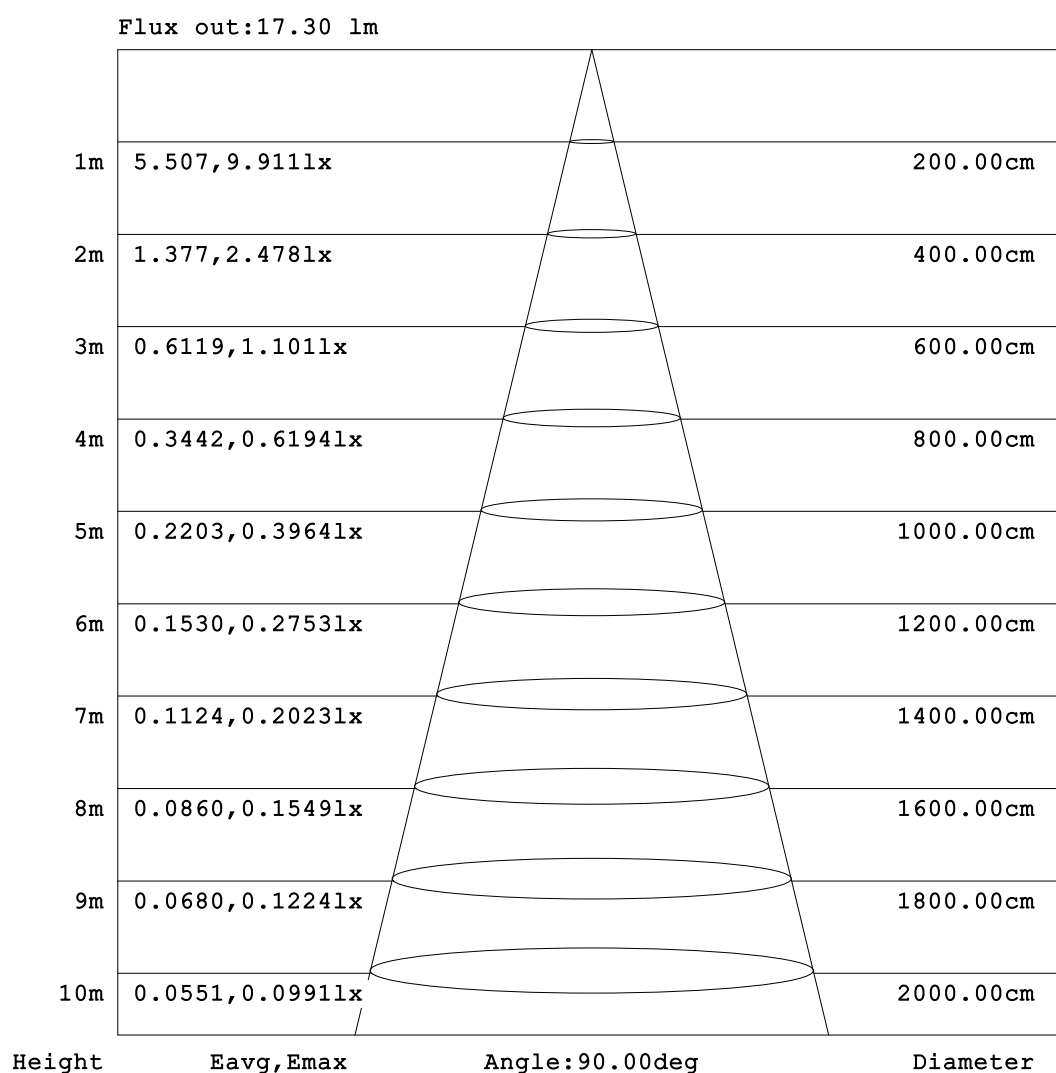


C Range: 0 - 360DEG
C Interval: 30.0DEG
Test Speed: HIGH
Temperature:25.3℃
Operators:
Test Date:2025-03-03

γ Range: 0 - 180DEG
γ Interval: 1.0DEG
Test System:EVERFINE GO-2000B_V1 SYSTEM V2.00.488
Humidity:65.0%
Test Distance:6.360m [K=1.0000]
Remarks:

AAI Figure

Test:U:24.00V I:0.6966A P:16.72W PF:1.000 Freq:0Hz Lamp Flux:89.4229x1 lm		
NAME: SF24-24V-2835-288-U2-B	TYPE:	WEIGHT:
SPEC.:	DIM.: Length=1m	SERIAL No.:
MFR.: OLympia lighting	SUR.:	Shielding Angle:



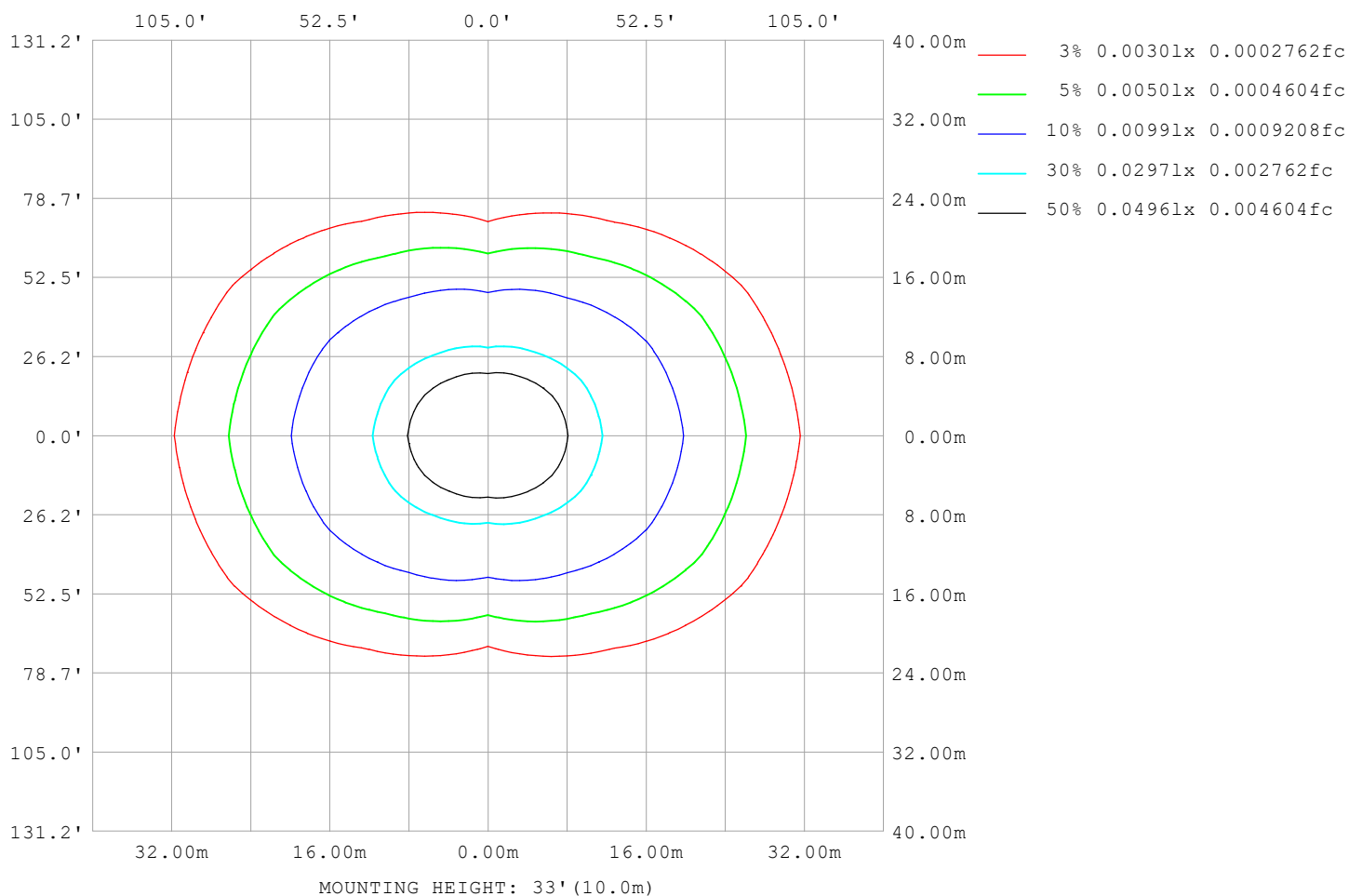
Note: The Curves indicate the illuminated area and the average illumination when the luminaire is at different distance.

C Range: 0 - 360DEG
C Interval: 30.0DEG
Test Speed: HIGH
Temperature: 25.3°C
Operators:
Test Date: 2025-03-03

γ Range: 0 - 180DEG
γ Interval: 1.0DEG
Test System: EVERFINE GO-2000B_V1 SYSTEM V2.00.488
Humidity: 65.0%
Test Distance: 6.360m [K=1.0000]
Remarks:

ISOLUX DIAGRAM

Test:U:24.00V I:0.6966A P:16.72W PF:1.000 Freq:0Hz Lamp Flux:89.4229x1 lm		
NAME: SF24-24V-2835-288-U2-B	TYPE:	WEIGHT:
SPEC.:	DIM.: Length=1m	SERIAL No.:
MFR.: OLympia lighting	SUR.:	Shielding Angle:



C Range: 0 - 360DEG
C Interval: 30.0DEG
Test Speed: HIGH
Temperature: 25.3°C
Operators:
Test Date: 2025-03-03

γ Range: 0 - 180DEG
γ Interval: 1.0DEG
Test System: EVERFINE GO-2000B_V1 SYSTEM V2.00.488
Humidity: 65.0%
Test Distance: 6.360m [K=1.0000]
Remarks:

LED Avg.L Report

Test:U:24.00V I:0.6966A P:16.72W PF:1.000 Freq:0Hz Lamp Flux:89.4229x1 lm		
NAME: SF24-24V-2835-288-U2-B	TYPE:	WEIGHT:
SPEC.:	DIM.: Length=1m	SERIAL No.:
MFR.: OLympia lighting	SUR.:	Shielding Angle:

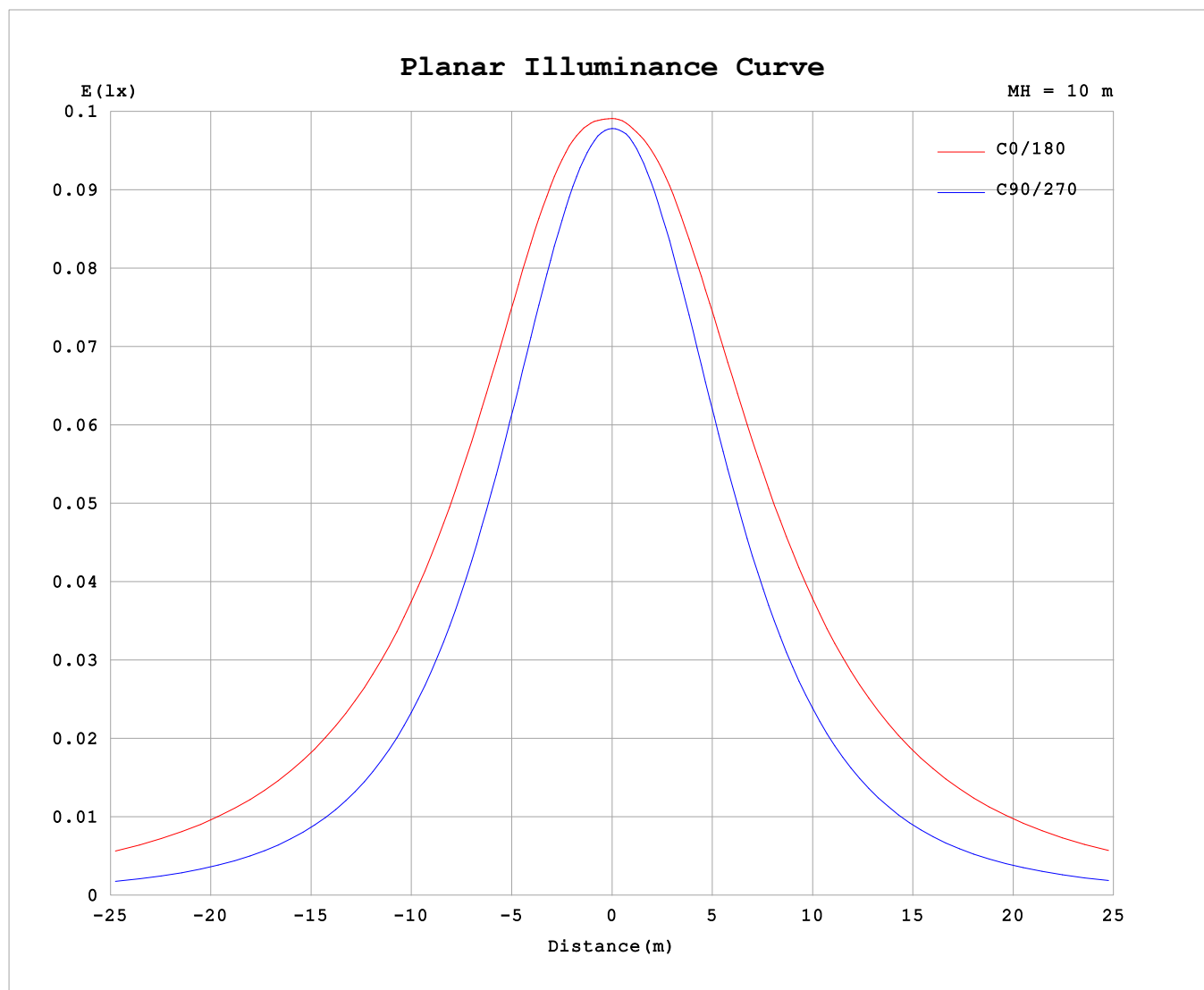
AvgL	cd/m2
L_0~180 (65) av	1063
L_0~180 (75) av	1732
L_0~180 (85) av	5100
L_90~270 (65) av	392
L_90~270 (75) av	406
L_90~270 (85) av	520
L_45 (65) av	768
L_45 (75) av	1184
L_45 (85) av	3347

Standard: GB/T 29293-2012

C Range: 0 - 360DEG
C Interval: 30.0DEG
Test Speed: HIGH
Temperature:25.3℃
Operators:
Test Date:2025-03-03

γ Range: 0 - 180DEG
γ Interval: 1.0DEG
Test System:EVERFINE GO-2000B_V1 SYSTEM V2.00.488
Humidity:65.0%
Test Distance:6.360m [K=1.0000]
Remarks:

Planar Illuminance Curve



C Range: 0 - 360DEG
C Interval: 30.0DEG
Test Speed: HIGH
Temperature: 25.3 °C
Operators:
Test Date: 2025-03-03

γ Range: 0 - 180DEG
 γ Interval: 1.0DEG
Test System: EVERFINE GO-2000B_V1 SYSTEM V2.00.488
Humidity: 65.0%
Test Distance: 6.360m [K=1.0000]
Remarks:

LUMINOUS DISTRIBUTION INTENSITY DATA

Test:U:24.00V I:0.6966A P:16.72W PF:1.000 Freq:0Hz Lamp Flux:89.4229x1 lm		
NAME: SF24-24V-2835-288-U2-B	TYPE:	WEIGHT:
SPEC.:	DIM.: Length=1m	SERIAL No.:
MFR.: OLYMPIA lighting	SUR.:	Shielding Angle:

Table--1

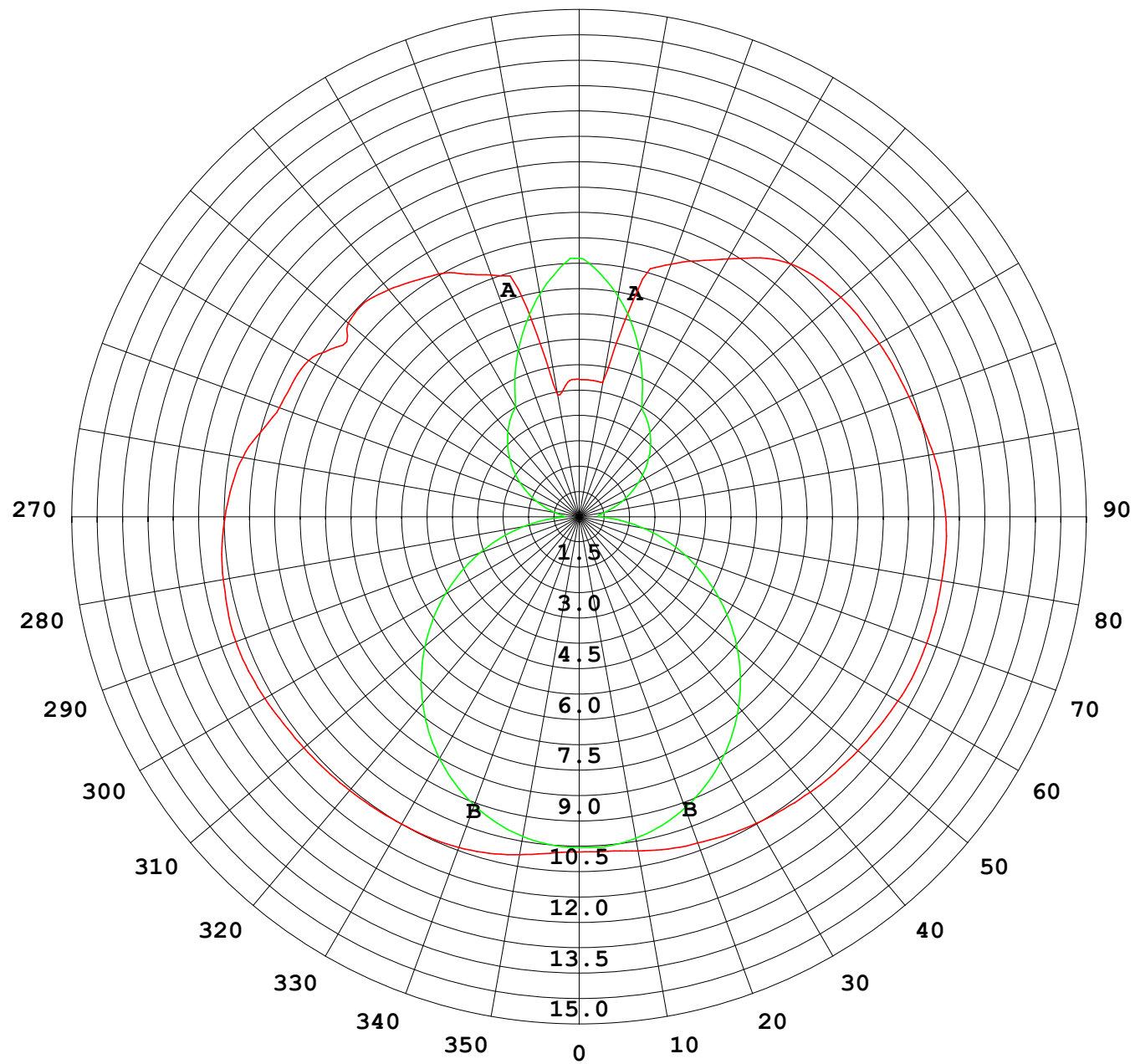
UNIT: cd

C (DEG) γ (DEG)	0	30	60	90	120	150	180	210	240	270	300	330						
0	9.84	9.84	9.84	9.84	9.84	9.84	9.84	9.84	9.84	9.84	9.84	9.84						
5	9.92	9.89	9.84	9.79	9.84	9.86	9.86	9.83	9.81	9.83	9.84	9.89						
10	10.1	9.99	9.80	9.66	9.77	9.92	9.96	9.87	9.76	9.71	9.80	9.99						
15	10.2	10.1	9.69	9.43	9.66	9.99	10.1	9.94	9.66	9.51	9.73	10.1						
20	10.3	10.1	9.54	9.13	9.50	9.99	10.2	9.97	9.51	9.21	9.59	10.1						
25	10.4	10.1	9.33	8.75	9.28	9.97	10.3	9.97	9.30	8.85	9.38	10.1						
30	10.4	10.0	9.05	8.31	8.98	9.94	10.4	9.97	9.03	8.42	9.11	10.1						
35	10.5	9.92	8.70	7.80	8.64	9.91	10.5	9.93	8.70	7.93	8.78	10.00						
40	10.5	9.83	8.32	7.24	8.25	9.85	10.6	9.87	8.32	7.38	8.39	9.91						
45	10.5	9.72	7.89	6.63	7.82	9.78	10.6	9.79	7.91	6.79	7.97	9.81						
50	10.6	9.61	7.43	5.98	7.38	9.68	10.7	9.72	7.48	6.15	7.51	9.69						
55	10.6	9.51	6.95	5.30	6.92	9.59	10.7	9.63	7.04	5.48	7.03	9.59						
60	10.7	9.42	6.47	4.59	6.46	9.51	10.8	9.55	6.59	4.79	6.56	9.49						
65	10.7	9.35	6.01	3.87	5.99	9.45	10.9	9.49	6.13	4.08	6.09	9.42						
70	10.7	9.29	5.60	3.14	5.58	9.37	10.9	9.43	5.72	3.37	5.67	9.35						
75	10.7	9.16	5.25	2.40	5.23	9.27	10.8	9.34	5.39	2.65	5.32	9.24						
80	10.6	9.02	4.95	1.67	4.93	9.16	10.8	9.23	5.10	1.93	5.01	9.09						
85	10.5	8.91	4.68	0.95	4.66	9.08	10.8	9.14	4.85	1.22	4.70	8.96						
90	10.4	8.77	4.43	0.44	4.48	9.03	10.8	9.10	4.66	0.60	4.48	8.86						
95	10.2	8.61	4.12	0.53	4.44	8.97	10.7	9.07	4.62	0.59	4.35	8.77						
100	10.0	8.28	3.40	0.72	4.54	8.92	10.6	9.01	4.71	0.77	3.73	8.60						
105	9.67	7.69	3.16	1.01	4.70	8.85	10.4	8.91	4.85	1.05	3.57	8.21						
110	9.37	7.41	2.98	1.34	4.95	8.85	10.3	8.87	5.05	1.37	3.61	7.84						
115	9.29	7.10	3.47	1.68	5.30	8.85	10.2	8.85	5.36	1.70	3.91	7.46						
120	9.18	6.91	3.97	2.02	5.63	8.88	10.2	8.85	5.72	2.03	4.26	7.50						
125	8.69	7.46	4.02	2.37	5.90	8.92	10.1	8.89	6.01	2.37	4.19	7.68						
130	8.85	7.40	4.13	2.69	6.06	8.95	10.0	8.95	6.22	2.70	4.32	7.42						
135	8.91	6.63	4.10	3.01	6.22	8.93	9.90	8.97	6.42	3.00	4.16	6.78						
140	8.70	5.74	4.01	3.30	6.39	8.74	9.69	8.83	6.62	3.28	4.06	6.37						
145	8.45	5.22	4.02	3.56	6.63	8.44	9.28	8.57	6.80	3.52	4.03	5.88						
150	8.24	4.79	3.91	3.80	6.82	8.19	8.74	8.33	6.97	3.73	4.02	5.12						
155	7.86	4.35	4.06	4.53	6.92	7.98	8.29	8.08	7.06	4.46	4.19	4.59						
160	7.56	3.93	4.89	5.29	7.02	7.81	7.89	7.90	7.12	5.24	4.95	4.34						
165	6.93	3.83	5.67	6.03	7.22	7.70	7.22	7.73	7.23	5.99	5.72	4.26						
170	3.63	4.83	6.45	6.73	7.32	7.68	4.01	7.62	7.27	6.67	6.43	5.04						
175	3.96	6.15	7.14	7.36	7.51	7.62	4.03	7.58	7.41	7.26	7.09	6.12						
180	4.04	7.23	7.63	7.69	7.67	7.17	4.03	7.25	7.63	7.69	7.67	7.15						

C Range: 0 - 360DEG
C Interval: 30.0DEG
Test Speed: HIGH
Temperature:25.3℃
Operators:
Test Date:2025-03-03

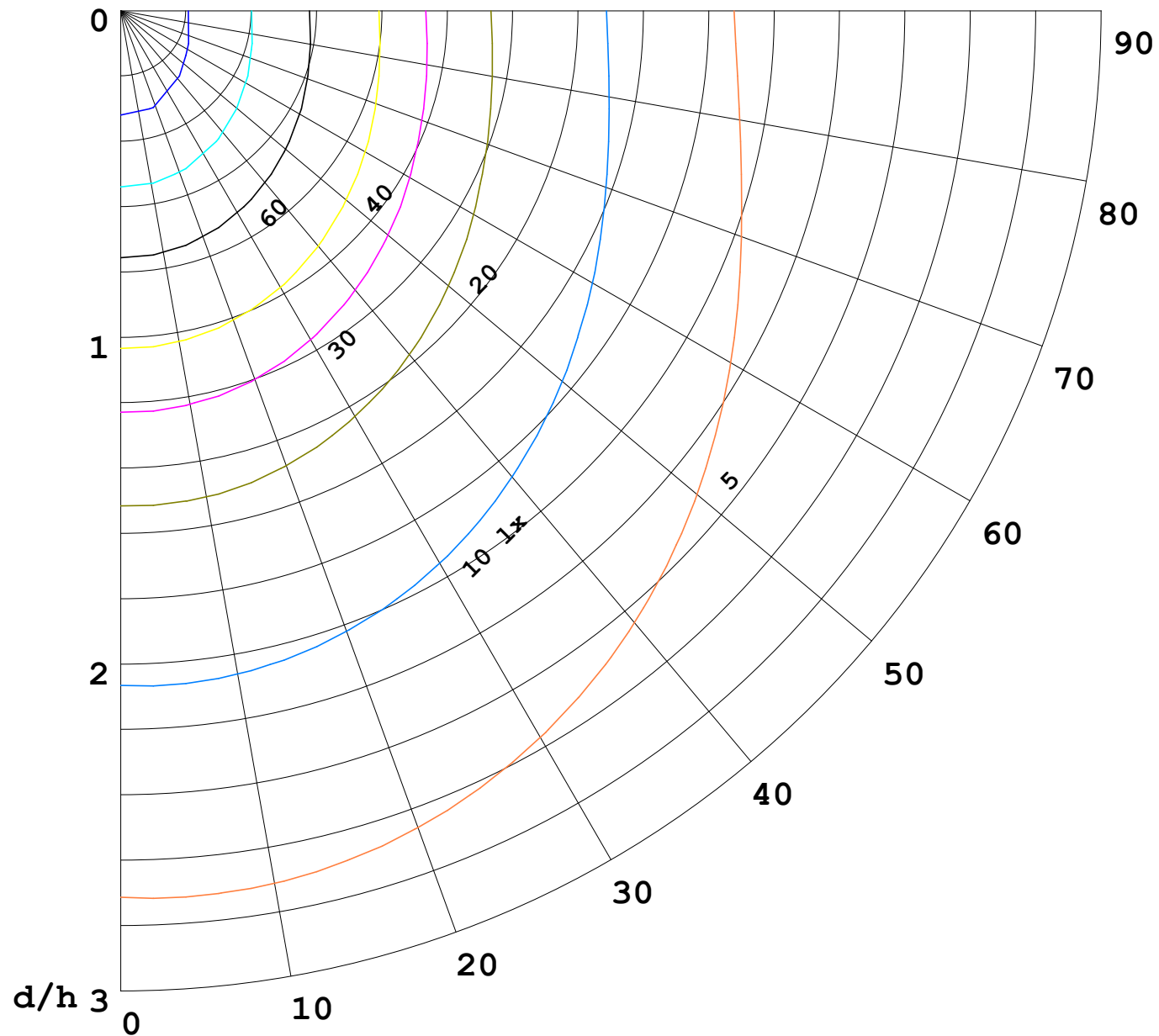
γ Range: 0 - 180DEG
γ Interval: 1.0DEG
Test System:EVERFINE GO-2000B_V1 SYSTEM V2.00.488
Humidity:65.0%
Test Distance:6.360m [K=1.0000]
Remarks:

I (cd)



1000 lm

$\kappa = 1$



F = 1000 lm
 K = 0.7
 Hcc = 0.8 m
 Hfc = 0.0 m
 Eave = 100 lx

	Pcc	Pw	Pfc
—————	70	50	30
—————	50	30	20

