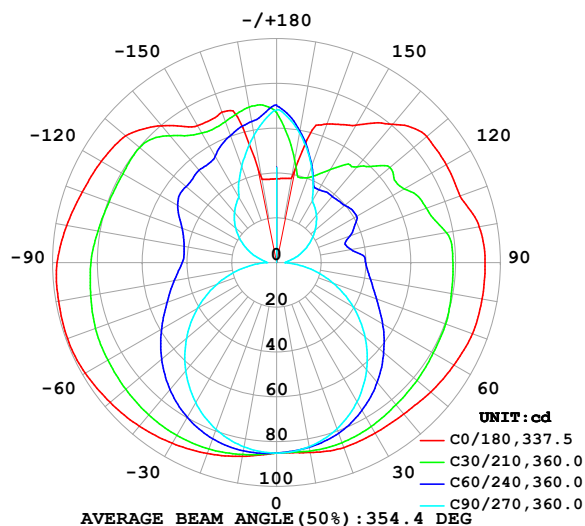


LUMINAIRE PHOTOMETRIC TEST REPORT

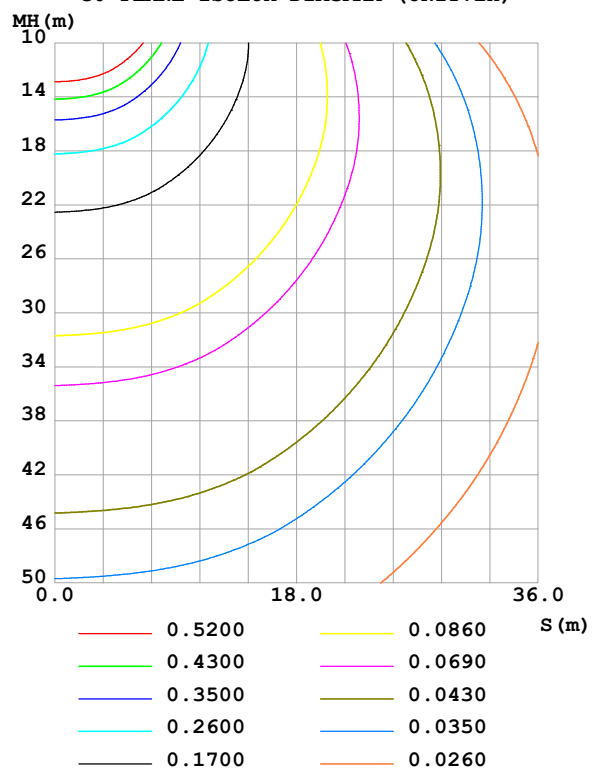
Test:U:24.00V I:0.6722A P:16.13W PF:1.000 Freq:0Hz Lamp Flux:794.707x1 lm		
NAME: SF24-24V-2835-288-U2-5700K-80	TYPE:	WEIGHT:
SPEC.:	DIM.: Length=1m	SERIAL No.:
MFR.: OLympia lighting	SUR.:	Shielding Angle:

DATA OF LAMP		PHOTOMETRIC DATA				Eff: 49.26 lm/W
MODEL	2835	I _{max} (cd)	99.38	S/MH(C0/180)	1.69	
NOMINAL POWER(W)	15	LOR(%)	100.0	S/MH(C90/270)	1.26	
RATED VOLTAGE(V)	24	TOTAL FLUX(lm)	794.71	η UP,DN(C0-180)	22.0,27.5	
NOMINAL FLUX(lm)	794.707	CIE CLASS	DIFFUSE	η UP,DN(C180-360)	22.4,28.1	
LAMPS INSIDE	1	η up (%)	44.4	CIBSE SHR NOM	1.75	
TEST VOLTAGE(V)		η down (%)	55.6	CIBSE SHR MAX	1.75	

LUMINOUS INTENSITY DISTRIBUTION DIAGRAM



C0 PLANE ISOLUX DIAGRAM (UNIT:lx)



C Range: 0 - 360DEG
C Interval: 30.0DEG
Test Speed: HIGH
Temperature:25.3℃
Operators:
Test Date:2025-05-13

γ Range: 0 - 180DEG
γ Interval: 1.0DEG
Test System:EVERFINE GO-2000B_V1 SYSTEM V2.00.488
Humidity:65.0%
Test Distance:6.360m [K=1.0000]
Remarks:

ZONAL FLUX DIAGRAM

ZONAL FLUX DIAGRAM:

γ	C0	C45	C90	C135	C180	C225	C270	C315	γ	Φ zone	Φ total	%lum, lamp
10	86.13	84.60	83.50	86.13	87.82	86.22	83.60	84.35	0- 10	8.137	8.137	1.02,1.02
20	87.90	83.36	78.99	85.88	90.75	86.16	79.24	83.21	10- 20	24.10	32.23	4.06,4.06
30	87.93	80.39	71.86	83.90	93.19	84.50	72.28	80.81	20- 30	38.57	70.81	8.91,8.91
40	88.33	76.45	62.55	80.58	95.37	81.47	63.20	76.95	30- 40	50.42	121.2	15.3,15.3
50	89.91	72.20	51.56	76.41	97.10	77.58	52.52	72.36	40- 50	59.04	180.3	22.7,22.7
60	91.46	67.81	39.48	71.88	98.69	73.27	40.77	67.73	50- 60	64.34	244.6	30.8,30.8
70	93.11	64.02	26.89	67.71	99.36	69.19	28.41	63.85	60- 70	66.62	311.2	39.2,39.2
80	93.19	61.04	14.33	64.05	98.90	65.45	15.88	60.82	70- 80	66.32	377.5	47.5,47.5
90	93.13	59.33	3.780	61.56	98.00	62.65	4.557	58.75	80- 90	64.05	441.6	55.6,55.6
100	91.93	55.55	6.122	60.89	95.20	61.62	6.423	55.38	90-100	61.74	503.3	63.3,63.3
110	87.19	53.14	11.19	61.38	92.34	62.36	11.82	52.25	100-110	58.33	561.7	70.7,70.7
120	87.50	53.66	16.79	63.71	90.43	65.25	17.79	56.81	110-120	56.10	617.8	77.7,77.7
130	87.58	53.04	22.47	66.31	88.09	66.42	23.87	55.16	120-130	52.31	670.1	84.3,84.3
140	80.65	47.28	27.70	66.96	79.81	64.01	29.33	48.65	130-140	44.64	714.7	89.9,89.9
150	70.81	42.90	32.08	64.94	70.67	60.90	33.90	43.73	140-150	34.23	748.9	94.2,94.2
160	65.85	43.25	45.64	61.75	71.54	63.74	45.79	42.41	150-160	24.50	773.4	97.3,97.3
170	38.28	53.19	58.94	65.15	37.75	67.29	58.00	52.16	160-170	15.70	789.1	99.3,99.3
180	37.42	68.52	68.36	66.98	37.53	68.65	68.07	67.43	170-180	5.581	794.7	100,100
DEG	LUMINOUS INTENSITY:cd									UNIT:lm		

Conical surface Flux(90deg): 149.87 lm

%lum = 18.9%

%lamp = 18.9%

Conical surface Flux(130deg): 277.79 lm

%lum = 35.0%

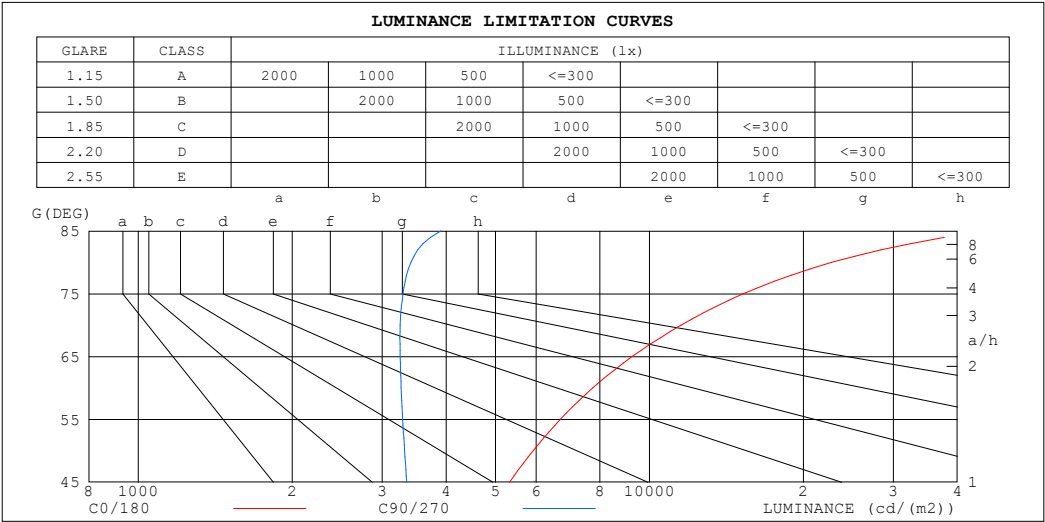
%lamp = 35.0%

C Range: 0 - 360DEG
 C Interval: 30.0DEG
 Test Speed: HIGH
 Temperature:25.3℃
 Operators:
 Test Date:2025-05-13

γ Range: 0 - 180DEG
 γ Interval: 1.0DEG
 Test System:EVERFINE GO-2000B_V1 SYSTEM V2.00.488
 Humidity:65.0%
 Test Distance:6.360m [K=1.0000]
 Remarks:

LUMINANCE LIMITATION CURVES

Test:U:24.00V I:0.6722A P:16.13W PF:1.000 Freq:0Hz Lamp Flux:794.707x1 lm		
NAME: SF24-24V-2835-288-U2-5700K-80	TYPE:	WEIGHT:
SPEC.:	DIM.: Length=1m	SERIAL No.:
MFR.: OLympia lighting	SUR.:	Shielding Angle:



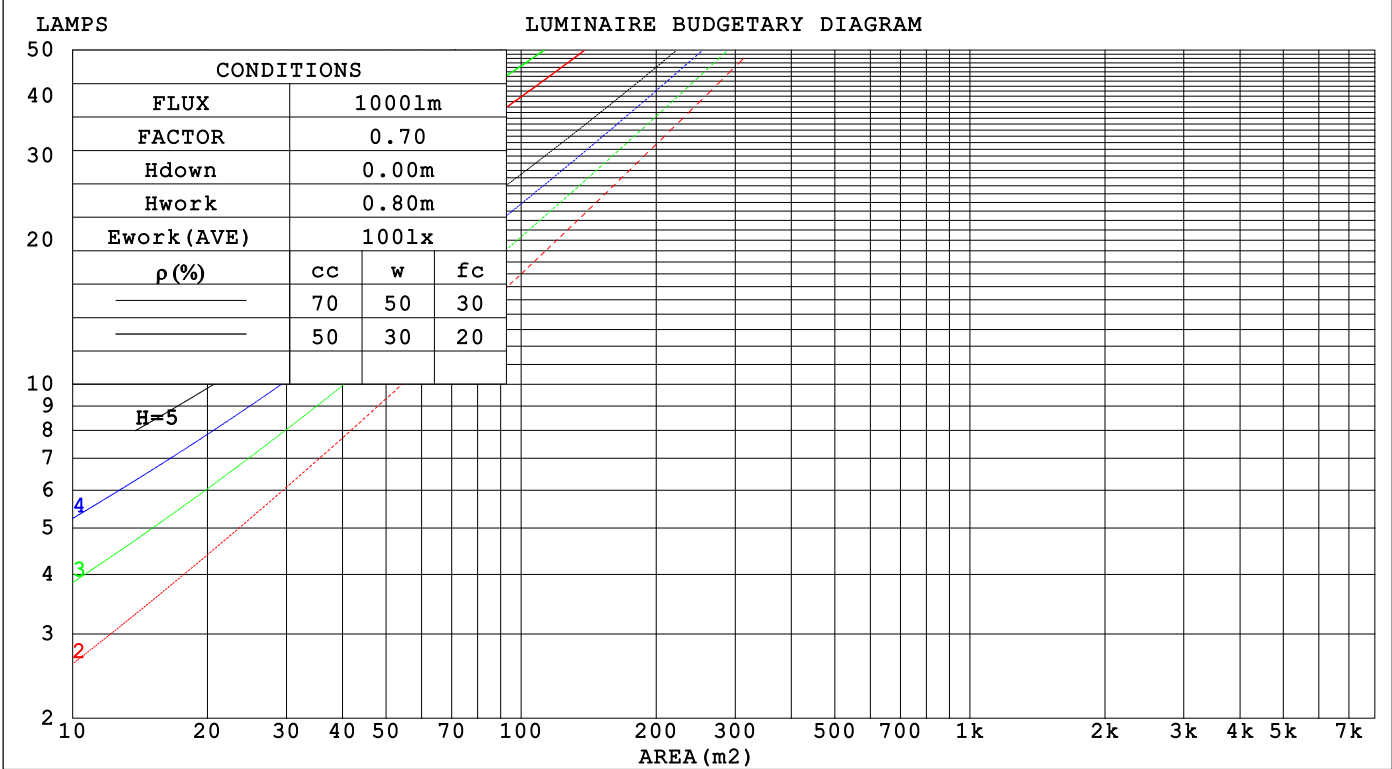
LUMINANCE cd/(m2)		
G (DEG)	C0/180	C90/270
85	45264	3908
80	22718	3414
75	15257	3295
70	11525	3253
65	9252	3254
60	7744	3267
55	6695	3289
50	5922	3318
45	5324	3350

C Range: 0 - 360DEG	γ Range: 0 - 180DEG
C Interval: 30.0DEG	γ Interval: 1.0DEG
Test Speed: HIGH	Test System:EVERFINE GO-2000B_V1 SYSTEM V2.00.488
Temperature:25.3℃	Humidity:65.0%
Operators:	Test Distance:6.360m [K=1.0000]
Test Date:2025-05-13	Remarks:

CU AND LUMINAIRE BUDGETARY ESTIMATE DIAGRAM

Test:U:24.00V I:0.6722A P:16.13W PF:1.000 Freq:0Hz																	
Lamp Flux:794.707x1 lm																	
NAME: SF24-24V-2835-288-U2-5700K-80									TYPE:						WEIGHT:		
SPEC.:									DIM.: Length=1m						SERIAL No.:		
MFR.: OLYMPIA lighting									SUR.:						Shielding Angle:		

pcc	80%			70%			50%			30%			10%			0
pw	50%	30%	10%	50%	30%	10%	50%	30%	10%	50%	30%	10%	50%	30%	10%	0
pfc	20%			20%			20%			20%			20%			0
RCR	RCR:Room Cavity Ratio Coefficients of Utilization(CU)															
0.0	1.08	1.08	1.08	1.01	1.01	1.01	.86	.86	.86	.73	.73	.73	.61	.61	.61	.56
1.0	.89	.84	.79	.83	.78	.73	.70	.66	.63	.59	.56	.53	.48	.46	.44	.39
2.0	.76	.68	.62	.70	.63	.57	.59	.54	.49	.49	.45	.42	.40	.37	.34	.30
3.0	.66	.57	.50	.61	.53	.46	.51	.45	.40	.43	.38	.34	.35	.31	.28	.24
4.0	.57	.48	.41	.53	.45	.38	.45	.38	.33	.37	.32	.28	.30	.26	.23	.19
5.0	.51	.41	.35	.47	.39	.32	.40	.33	.28	.33	.28	.24	.27	.23	.20	.16
6.0	.45	.36	.30	.42	.34	.28	.36	.29	.24	.30	.24	.20	.24	.20	.17	.14
7.0	.41	.32	.26	.38	.30	.24	.32	.26	.21	.27	.22	.18	.22	.18	.15	.12
8.0	.37	.28	.22	.34	.26	.21	.29	.23	.18	.24	.19	.16	.20	.16	.13	.10
9.0	.33	.25	.20	.31	.24	.19	.27	.21	.16	.22	.17	.14	.18	.14	.12	.09
10.0	.31	.23	.18	.28	.21	.17	.24	.19	.14	.21	.16	.12	.17	.13	.10	.08



C Range: 0 - 360DEG
C Interval: 30.0DEG
Test Speed: HIGH
Temperature:25.3℃
Operators:
Test Date:2025-05-13

γ Range: 0 - 180DEG
γ Interval: 1.0DEG
Test System:EVERFINE GO-2000B_V1 SYSTEM V2.00.488
Humidity:65.0%
Test Distance:6.360m [K=1.0000]
Remarks:

WEC AND CCEC

Test:U:24.00V I:0.6722A P:16.13W PF:1.000 Freq:0Hz Lamp Flux:794.707x1 lm		
NAME: SF24-24V-2835-288-U2-5700K-80	TYPE:	WEIGHT:
SPEC.:	DIM.: Length=1m	SERIAL No.:
MFR.: OLympia lighting	SUR.:	Shielding Angle:

pcc	80%			70%			50%			30%			10%			0														
pw	50%	30%	10%	50%	30%	10%	50%	30%	10%	50%	30%	10%	50%	30%	10%	0														
pfc	20%			20%			20%			20%			20%			0														
RCR	RCR:Room Cavity Ratio															Wall Exitance Coefficients(WEC)														
0.0																														
1.0	.387	.220	.070	.366	.209	.066	.328	.188	.060	.292	.168	.054	.259	.150	.048															
2.0	.329	.180	.055	.310	.171	.053	.274	.153	.047	.242	.136	.042	.212	.120	.038															
3.0	.289	.154	.046	.272	.146	.044	.240	.130	.039	.210	.115	.035	.182	.101	.031															
4.0	.259	.135	.040	.244	.127	.038	.214	.113	.034	.186	.100	.030	.161	.087	.027															
5.0	.235	.120	.035	.221	.113	.033	.193	.101	.030	.168	.089	.026	.144	.077	.023															
6.0	.215	.108	.031	.202	.102	.029	.177	.090	.026	.153	.080	.023	.131	.069	.021															
7.0	.198	.098	.028	.186	.093	.026	.163	.082	.024	.141	.072	.021	.120	.063	.018															
8.0	.183	.090	.025	.172	.085	.024	.151	.075	.021	.130	.066	.019	.111	.057	.017															
9.0	.171	.083	.023	.160	.078	.022	.140	.069	.020	.121	.061	.017	.104	.053	.015															
10.0	.160	.077	.021	.150	.072	.020	.131	.064	.018	.114	.056	.016	.097	.049	.014															

pcc	80%			70%			50%			30%			10%			0
pw	50%	30%	10%	50%	30%	10%	50%	30%	10%	50%	30%	10%	50%	30%	10%	0
pfc	20%			20%			20%			20%			20%			0
RCR	RCR:Room Cavity Ratio						Ceiling Cavity Exitance Coefficients(CCEC)									
0.0	.529	.529	.529	.452	.452	.452	.309	.309	.309	.177	.177	.177	.057	.057	.057	
1.0	.527	.497	.470	.451	.426	.404	.308	.293	.280	.178	.170	.163	.057	.055	.053	
2.0	.521	.475	.437	.446	.409	.378	.306	.283	.264	.176	.165	.155	.057	.053	.050	
3.0	.514	.460	.417	.440	.397	.362	.302	.276	.254	.175	.161	.149	.056	.052	.049	
4.0	.506	.448	.404	.434	.387	.351	.299	.270	.247	.173	.158	.146	.056	.051	.048	
5.0	.499	.439	.395	.429	.380	.343	.295	.265	.242	.171	.156	.144	.055	.051	.047	
6.0	.492	.432	.388	.423	.374	.338	.292	.262	.239	.169	.154	.142	.055	.050	.047	
7.0	.485	.425	.383	.417	.369	.334	.288	.259	.237	.168	.152	.141	.054	.050	.047	
8.0	.479	.420	.380	.412	.364	.331	.285	.256	.235	.166	.151	.140	.054	.049	.046	
9.0	.473	.416	.377	.407	.361	.329	.282	.254	.233	.164	.150	.139	.053	.049	.046	
10.0	.467	.412	.375	.403	.358	.327	.279	.252	.232	.163	.149	.139	.053	.049	.046	

C Range: 0 - 360DEG
C Interval: 30.0DEG
Test Speed: HIGH
Temperature:25.3℃
Operators:
Test Date:2025-05-13

γ Range: 0 - 180DEG
γ Interval: 1.0DEG
Test System:EVERFINE GO-2000B_V1 SYSTEM V2.00.488
Humidity:65.0%
Test Distance:6.360m [K=1.0000]
Remarks:

UGR(Unified Glare Rating) Table

Test:U:24.00V I:0.6722A P:16.13W PF:1.000 Freq:0Hz Lamp Flux:794.707x1 lm											
NAME: SF24-24V-2835-288-U2-5700K-80					TYPE:			WEIGHT:			
SPEC.:					DIM.: Length=1m			SERIAL No.:			
MFR.: OLympia lighting					SUR.:			Shielding Angle:			
ceiling/cavity	0.7	0.7	0.5	0.5	0.3	0.7	0.7	0.5	0.5	0.3	
walls	0.5	0.3	0.5	0.3	0.3	0.5	0.3	0.5	0.3	0.3	
working plane	0.2	0.2	0.2	0.2	0.2	0.2	0.2	0.2	0.2	0.2	
Room dimensions		Viewed crosswise				Viewed endwise					
x = 2H y = 2H	16.2	17.3	17.0	18.2	19.2	12.7	13.8	13.5	14.6	15.7	
	3H	19.6	20.6	20.4	21.4	22.5	14.5	15.5	15.3	16.3	17.4
	4H	21.5	22.4	22.3	23.3	24.4	15.3	16.3	16.2	17.1	18.2
	6H	23.6	24.5	24.4	25.3	26.5	16.1	16.9	16.9	17.8	18.9
	8H	24.8	25.6	25.6	26.5	27.6	16.4	17.2	17.2	18.1	19.2
	12H	26.1	26.9	27.0	27.8	29.0	16.6	17.4	17.5	18.3	19.5
4H	2H	16.7	17.7	17.6	18.5	19.6	14.3	15.3	15.2	16.1	17.2
	3H	20.3	21.2	21.2	22.1	23.2	16.3	17.2	17.2	18.1	19.2
	4H	22.4	23.2	23.3	24.1	25.3	17.4	18.1	18.3	19.0	20.2
	6H	24.8	25.4	25.7	26.4	27.6	18.3	19.0	19.2	19.9	21.1
	8H	26.0	26.7	27.0	27.6	28.8	18.7	19.4	19.7	20.3	21.5
	12H	27.5	28.1	28.5	29.1	30.3	19.1	19.7	20.0	20.6	21.8
8H	4H	22.8	23.4	23.7	24.3	25.5	19.0	19.6	19.9	20.6	21.8
	6H	25.4	25.9	26.4	26.9	28.1	20.4	20.9	21.3	21.9	23.1
	8H	26.9	27.4	27.9	28.4	29.6	21.0	21.5	22.0	22.5	23.7
	12H	28.7	29.1	29.7	30.1	31.4	21.6	22.0	22.6	23.0	24.3
12H	4H	22.8	23.3	23.7	24.3	25.5	19.6	20.2	20.6	21.2	22.4
	6H	25.5	26.0	26.5	27.0	28.2	21.3	21.7	22.2	22.7	24.0
	8H	27.2	27.6	28.2	28.6	29.8	22.1	22.5	23.1	23.5	24.8
Variations with the observer position at spacings(CIE Pub.117):											
S = 1.0H	+ 0.1 / - 0.1					+ 0.1 / - 0.1					
1.5H	+ 0.2 / - 0.3					+ 0.2 / - 0.2					
2.0H	+ 0.3 / - 0.4					+ 0.3 / - 0.4					

CIE Pub.117, 794.7 lm Total Lamp Luminous Flux Correct (8log(F/F0) = -0.8)
Area: 0.024 m2

C Range: 0 - 360DEG
C Interval: 30.0DEG
Test Speed: HIGH
Temperature:25.3℃
Operators:
Test Date:2025-05-13

γ Range: 0 - 180DEG
γ Interval: 1.0DEG
Test System:EVERFINE GO-2000B_V1 SYSTEM V2.00.488
Humidity:65.0%
Test Distance:6.360m [K=1.0000]
Remarks:

UTILIZATION FACTORS TABLE

Test:U:24.00V I:0.6722A P:16.13W PF:1.000 Freq:0Hz Lamp Flux:794.707x1 lm		
NAME: SF24-24V-2835-288-U2-5700K-80	TYPE:	WEIGHT:
SPEC.:	DIM.: Length=1m	SERIAL No.:
MFR.: OLympia lighting	SUR.:	Shielding Angle:

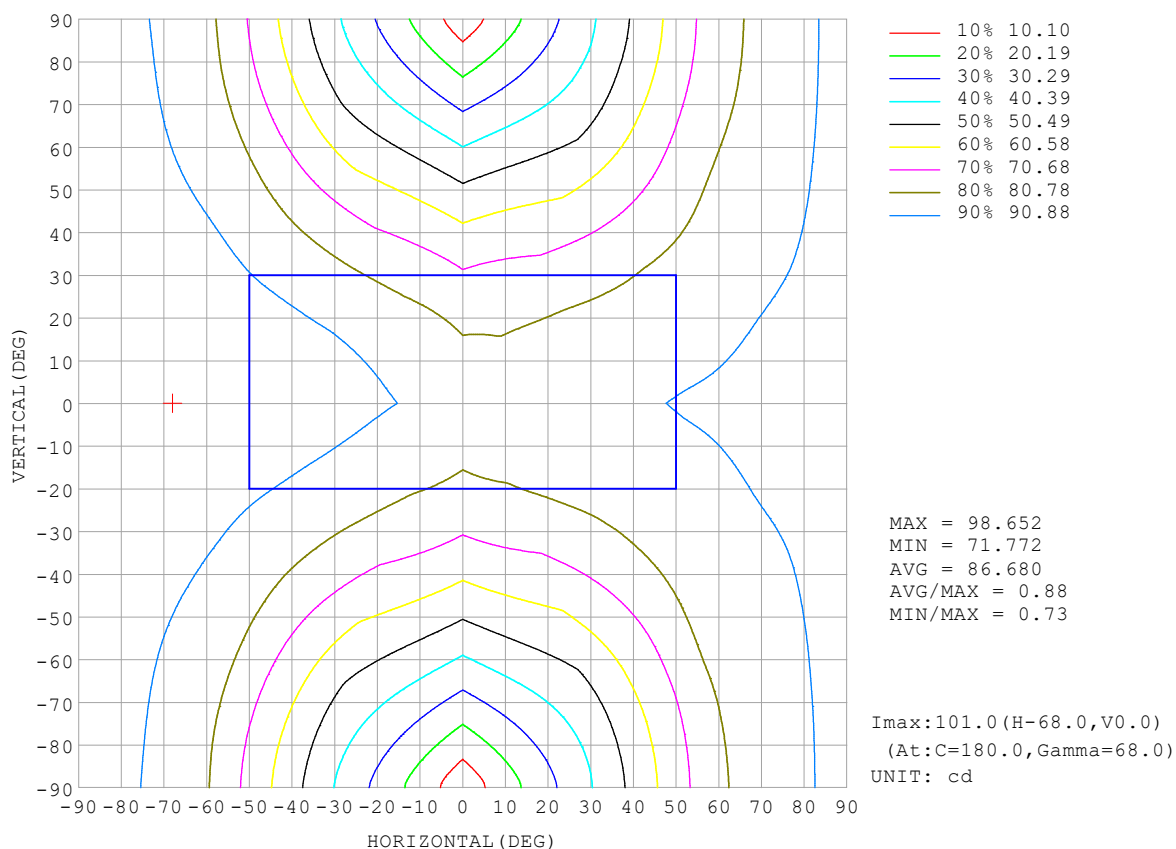
REFLECTANCE										
Ceiling	0.8	0.8	0.8	0.7	0.7	0.7	0.5	0.5	0.5	0
Walls	0.7	0.5	0.3	0.7	0.5	0.3	0.7	0.5	0.3	0
Working plane	0.2	0.2	0.2	0.2	0.2	0.2	0.2	0.2	0.2	0
ROOM INDEX	UTILIZATION FACTORS (PERCENT) $k(RI) \times RCR = 5$									
$k = 0.60$	39	27	20	37	26	19	34	24	18	11
0.80	48	35	27	45	33	26	41	30	24	15
1.00	55	42	33	52	40	32	46	38	29	18
1.25	62	49	40	58	46	38	51	42	35	22
1.50	67	54	45	63	51	43	55	46	39	24
2.00	75	63	54	70	59	51	61	52	46	29
2.50	80	69	60	74	65	57	64	56	50	31
3.00	84	74	65	78	69	62	67	60	54	34
4.00	89	80	73	82	75	68	71	65	60	37
5.00	92	84	78	85	79	73	73	68	64	40
ROOM INDEX	UF (total)									Direct
According to DIN EN 13032-2 2004			Suspended					SHRNOM = 1.25		

C Range: 0 - 360DEG
 C Interval: 30.0DEG
 Test Speed: HIGH
 Temperature: 25.3 °C
 Operators:
 Test Date: 2025-05-13

γ Range: 0 - 180DEG
 γ Interval: 1.0DEG
 Test System: EVERFINE GO-2000B_V1 SYSTEM V2.00.488
 Humidity: 65.0%
 Test Distance: 6.360m [K=1.0000]
 Remarks:

ISOCANDELA DIAGRAM

Test:U:24.00V I:0.6722A P:16.13W PF:1.000 Freq:0Hz Lamp Flux:794.707x1 lm		
NAME: SF24-24V-2835-288-U2-5700K-80	TYPE:	WEIGHT:
SPEC.:	DIM.: Length=1m	SERIAL No.:
MFR.: OLympia lighting	SUR.:	Shielding Angle:

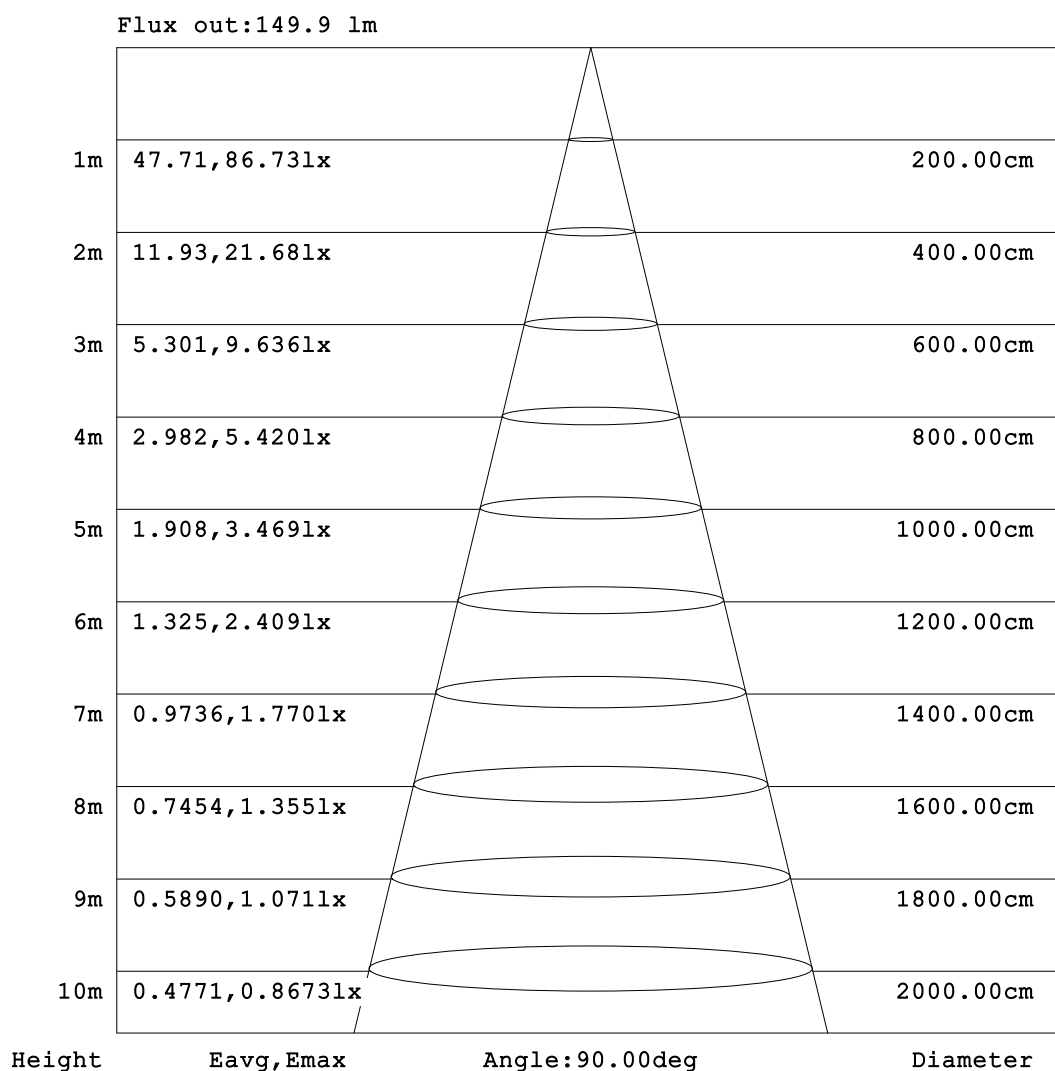


C Range: 0 - 360DEG
C Interval: 30.0DEG
Test Speed: HIGH
Temperature: 25.3°C
Operators:
Test Date: 2025-05-13

γ Range: 0 - 180DEG
γ Interval: 1.0DEG
Test System: EVERFINE GO-2000B_V1 SYSTEM V2.00.488
Humidity: 65.0%
Test Distance: 6.360m [K=1.0000]
Remarks:

AAI Figure

Test:U:24.00V I:0.6722A P:16.13W PF:1.000 Freq:0Hz Lamp Flux:794.707x1 lm		
NAME: SF24-24V-2835-288-U2-5700K-80	TYPE:	WEIGHT:
SPEC.:	DIM.: Length=1m	SERIAL No.:
MFR.: OLympia lighting	SUR.:	Shielding Angle:



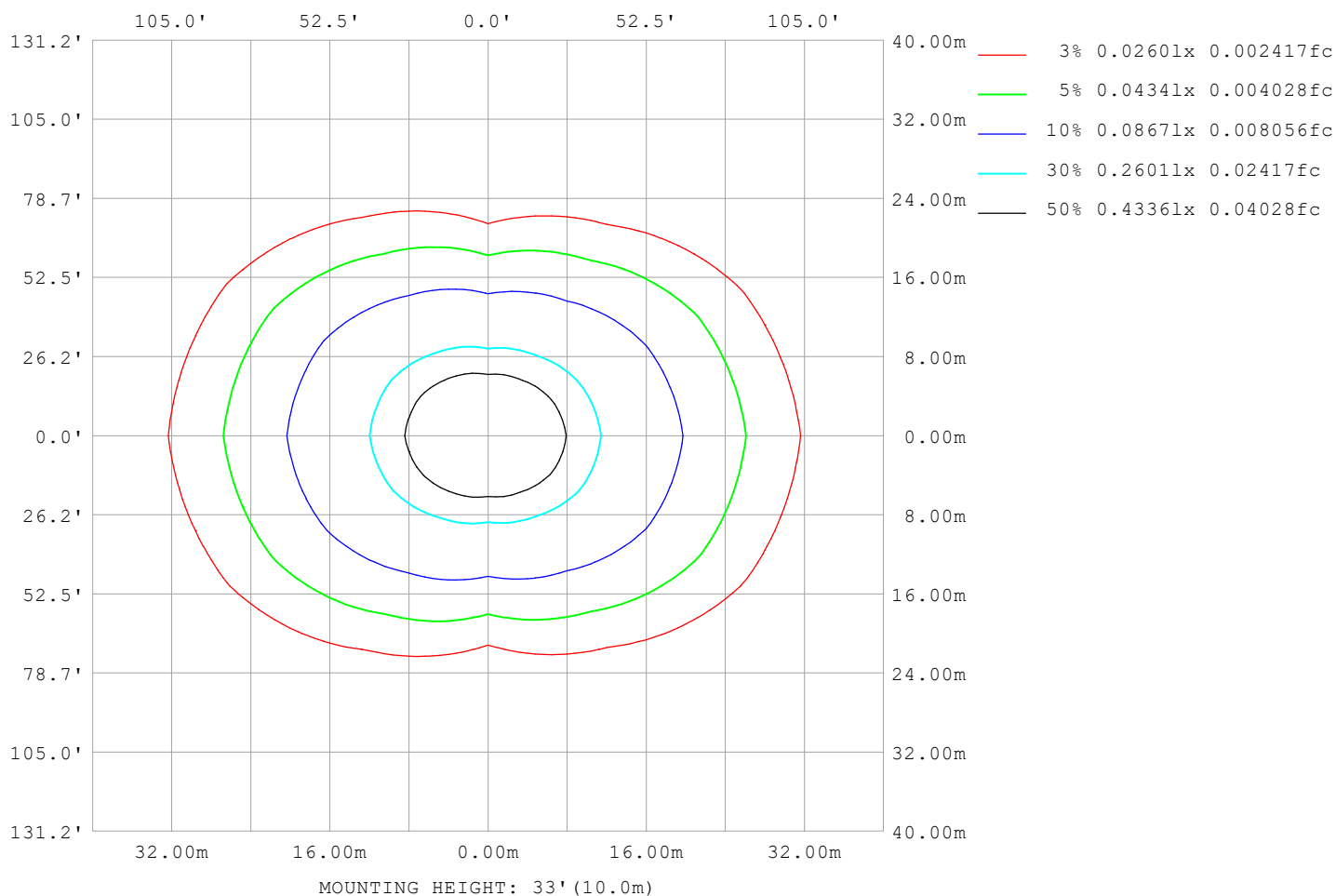
Note: The Curves indicate the illuminated area and the average illumination when the luminaire is at different distance.

C Range: 0 - 360DEG
C Interval: 30.0DEG
Test Speed: HIGH
Temperature: 25.3°C
Operators:
Test Date: 2025-05-13

γ Range: 0 - 180DEG
γ Interval: 1.0DEG
Test System: EVERFINE GO-2000B_V1 SYSTEM V2.00.488
Humidity: 65.0%
Test Distance: 6.360m [K=1.0000]
Remarks:

ISOLUX DIAGRAM

Test:U:24.00V I:0.6722A P:16.13W PF:1.000 Freq:0Hz Lamp Flux:794.707x1 lm		
NAME: SF24-24V-2835-288-U2-5700K-80	TYPE:	WEIGHT:
SPEC.:	DIM.: Length=1m	SERIAL No.:
MFR.: OLympia lighting	SUR.:	Shielding Angle:



C Range: 0 - 360DEG
C Interval: 30.0DEG
Test Speed: HIGH
Temperature: 25.3°C
Operators:
Test Date: 2025-05-13

γ Range: 0 - 180DEG
γ Interval: 1.0DEG
Test System: EVERFINE GO-2000B_V1 SYSTEM V2.00.488
Humidity: 65.0%
Test Distance: 6.360m [K=1.0000]
Remarks:

LED Avg.L Report

Test:U:24.00V I:0.6722A P:16.13W PF:1.000 Freq:0Hz Lamp Flux:794.707x1 lm		
NAME: SF24-24V-2835-288-U2-5700K-80	TYPE:	WEIGHT:
SPEC.:	DIM.: Length=1m	SERIAL No.:
MFR.: OLympia lighting	SUR.:	Shielding Angle:

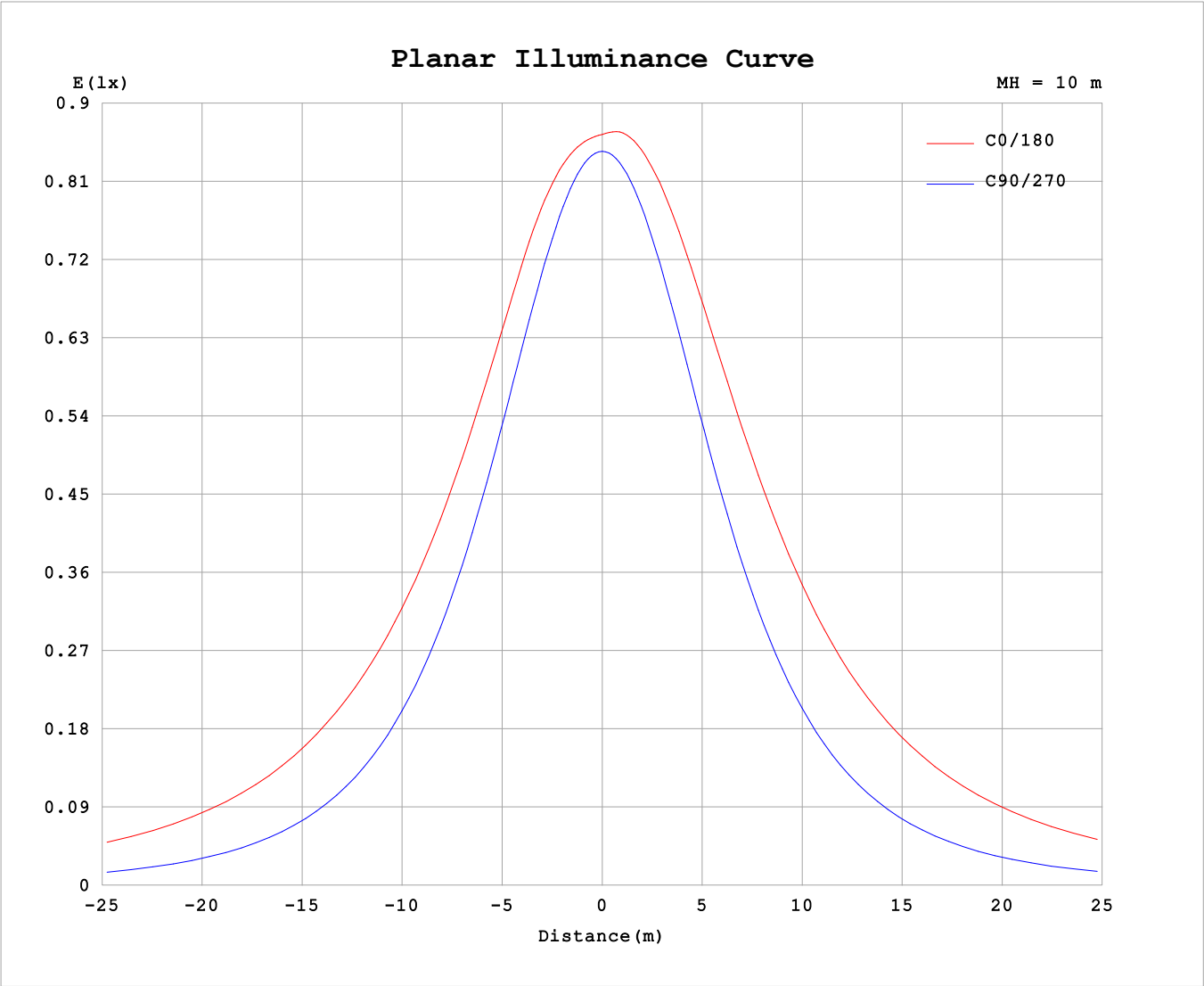
AvgL	cd/m2
L_0~180 (65) av	9447
L_0~180 (75) av	15491
L_0~180 (85) av	45861
L_90~270 (65) av	3346
L_90~270 (75) av	3441
L_90~270 (85) av	4297
L_45 (65) av	6747
L_45 (75) av	10477
L_45 (85) av	29918

Standard: GB/T 29293-2012

C Range: 0 - 360DEG
C Interval: 30.0DEG
Test Speed: HIGH
Temperature:25.3℃
Operators:
Test Date:2025-05-13

γ Range: 0 - 180DEG
γ Interval: 1.0DEG
Test System:EVERFINE GO-2000B_V1 SYSTEM V2.00.488
Humidity:65.0%
Test Distance:6.360m [K=1.0000]
Remarks:

Planar Illuminance Curve



C Range: 0 - 360DEG	γ Range: 0 - 180DEG
C Interval: 30.0DEG	γ Interval: 1.0DEG
Test Speed: HIGH	Test System:EVERFINE GO-2000B_V1 SYSTEM V2.00.488
Temperature:25.3℃	Humidity:65.0%
Operators:	Test Distance:6.360m [K=1.0000]
Test Date:2025-05-13	Remarks:

LUMINOUS DISTRIBUTION INTENSITY DATA

Test:U:24.00V I:0.6722A P:16.13W PF:1.000 Freq:0Hz Lamp Flux:794.707x1 lm																	
NAME: SF24-24V-2835-288-U2-5700K-80									TYPE:						WEIGHT:		
SPEC.:									DIM.: Length=1m						SERIAL No.:		
MFR.: OLympia lighting									SUR.:						Shielding Angle:		

Table--1

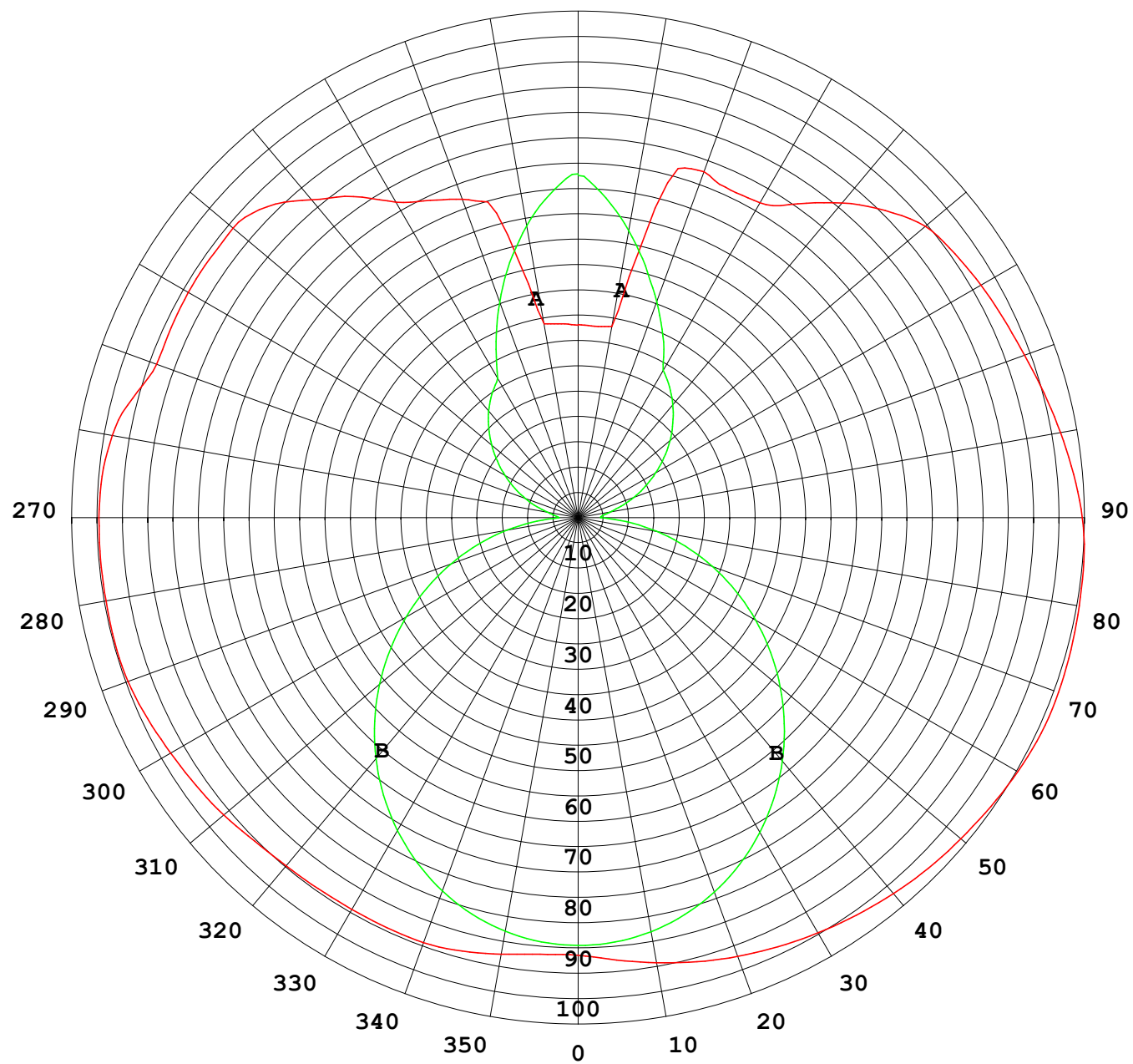
UNIT: cd

C (DEG) γ (DEG)	0	30	60	90	120	150	180	210	240	270	300	330						
0	85.1	85.1	85.1	85.1	85.1	85.1	85.1	85.1	85.1	85.1	85.1	85.1						
5	85.2	85.0	84.5	84.7	85.3	86.0	86.3	86.0	85.5	84.7	84.5	84.9						
10	86.1	85.4	83.7	83.5	85.2	87.0	87.8	87.0	85.4	83.6	83.7	85.0						
15	87.2	85.7	82.7	81.6	84.6	87.8	89.3	87.9	84.9	81.8	82.6	85.2						
20	87.9	85.6	81.1	79.0	83.3	88.5	90.7	88.6	83.7	79.2	81.1	85.3						
25	87.9	85.2	79.0	75.7	81.4	88.8	92.0	89.0	82.0	76.1	79.2	85.1						
30	87.9	84.5	76.2	71.9	79.0	88.8	93.2	89.1	79.8	72.3	76.7	84.9						
35	88.1	83.7	73.2	67.5	76.2	88.6	94.3	89.1	77.2	68.0	73.9	84.2						
40	88.3	83.0	69.9	62.6	72.9	88.3	95.4	88.8	74.1	63.2	70.6	83.3						
45	88.9	82.4	66.3	57.2	69.3	87.9	96.3	88.5	70.7	58.0	66.9	82.4						
50	89.9	81.9	62.4	51.6	65.5	87.3	97.1	88.0	67.1	52.5	63.0	81.7						
55	90.7	81.3	58.6	45.6	61.5	86.8	97.9	87.5	63.2	46.8	59.0	81.0						
60	91.5	80.8	54.7	39.5	57.4	86.3	98.7	87.1	59.3	40.8	55.0	80.4						
65	92.4	80.5	50.9	33.2	53.6	85.8	99.3	86.7	55.6	34.6	51.2	80.1						
70	93.1	80.4	47.5	26.9	50.1	85.3	99.4	86.1	52.1	28.4	47.7	80.0						
75	93.3	79.8	44.8	20.6	47.0	84.5	99.2	85.2	49.2	22.1	44.8	79.7						
80	93.2	79.3	42.6	14.3	44.5	83.6	98.9	84.3	46.4	15.9	42.6	79.0						
85	93.2	79.0	40.8	8.23	42.3	82.9	98.7	83.6	44.0	9.74	40.6	78.5						
90	93.1	78.7	39.8	3.78	40.6	82.5	98.0	83.0	42.2	4.56	39.3	78.2						
95	92.9	78.7	38.6	4.57	40.1	81.9	96.7	82.1	41.5	4.92	38.4	78.1						
100	91.9	77.1	33.8	6.12	40.7	81.0	95.2	81.1	42.0	6.42	33.9	76.8						
105	89.7	73.4	31.8	8.49	41.6	80.2	93.7	80.2	43.1	8.89	32.6	73.9						
110	87.2	71.2	34.9	11.2	43.3	79.5	92.3	79.6	44.9	11.8	31.9	72.5						
115	87.3	69.9	38.4	14.0	45.9	79.0	91.3	79.4	48.0	14.8	36.3	72.4						
120	87.5	65.8	41.4	16.8	48.6	78.8	90.4	79.3	51.0	17.8	41.0	72.6						
125	87.5	64.3	41.2	19.7	50.8	79.3	89.4	79.8	53.0	20.9	40.7	71.7						
130	87.6	66.2	39.8	22.5	52.9	79.7	88.1	79.9	52.8	23.9	40.6	69.7						
135	85.4	60.8	39.2	25.2	54.4	79.6	84.4	78.3	53.1	26.7	40.4	62.5						
140	80.6	55.8	38.7	27.7	56.0	77.9	79.8	74.0	53.9	29.3	39.6	57.6						
145	76.2	53.5	38.6	29.9	57.2	75.2	74.5	69.4	53.6	31.7	38.4	55.3						
150	70.8	48.1	37.7	32.1	58.3	71.6	70.7	66.8	54.9	33.9	37.4	50.0						
155	68.1	43.4	39.1	38.6	58.6	66.3	70.2	66.2	58.2	39.9	38.1	44.2						
160	65.9	40.4	46.1	45.6	59.2	64.3	71.5	67.0	60.4	45.8	45.0	39.8						
165	61.3	39.4	53.1	52.6	59.6	64.4	67.4	68.8	62.6	51.9	52.2	38.5						
170	38.3	46.7	59.8	58.9	61.1	69.2	37.7	70.6	64.0	58.0	58.3	46.1						
175	37.8	57.1	66.0	64.6	64.5	71.0	37.4	70.6	66.7	63.8	63.6	56.5						
180	37.4	67.0	70.0	68.4	67.4	66.5	37.5	66.9	70.4	68.1	68.6	66.2						

C Range: 0 - 360DEG
C Interval: 30.0DEG
Test Speed: HIGH
Temperature:25.3℃
Operators:
Test Date:2025-05-13

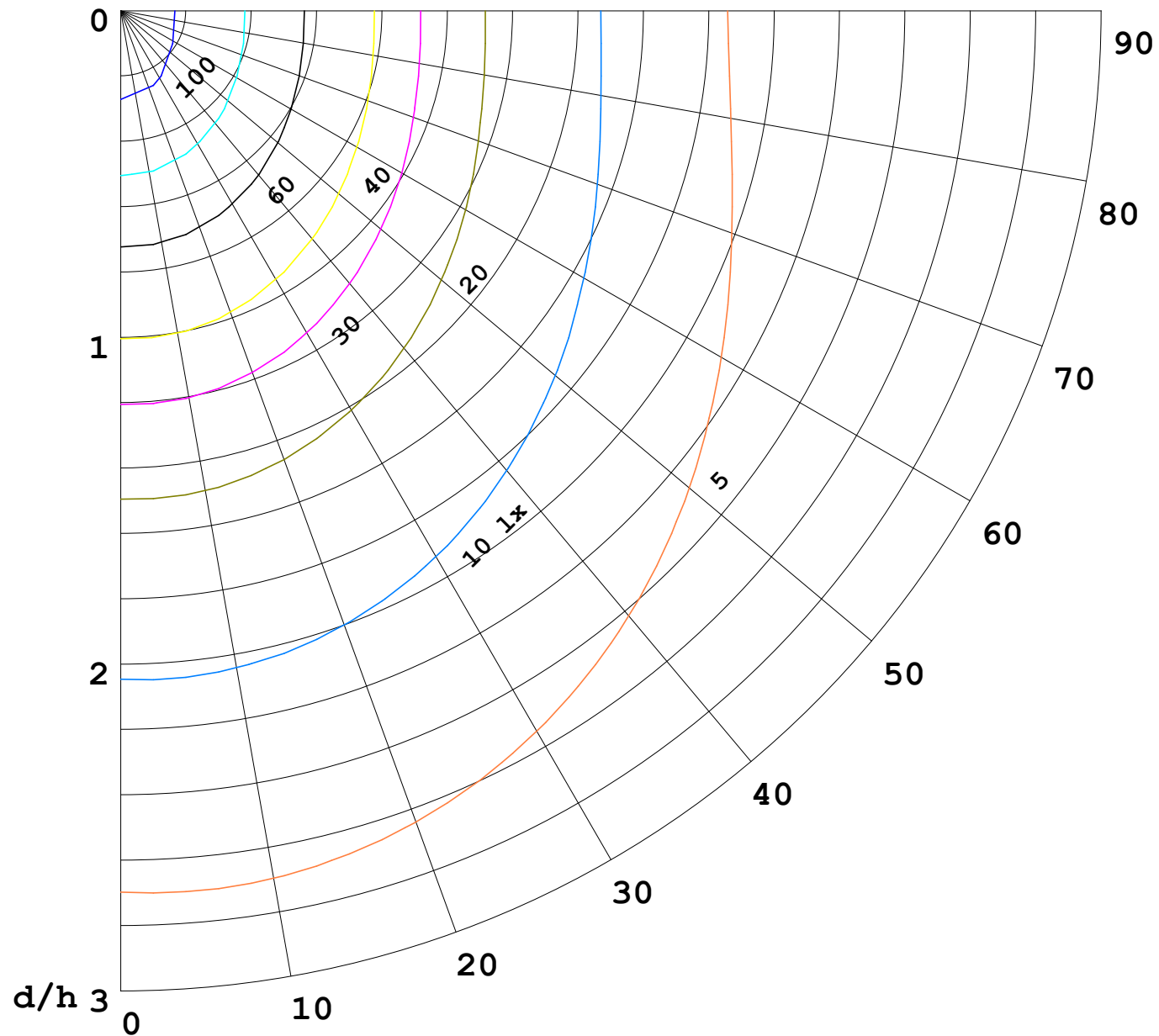
γ Range: 0 - 180DEG
γ Interval: 1.0DEG
Test System:EVERFINE GO-2000B_V1 SYSTEM V2.00.488
Humidity:65.0%
Test Distance:6.360m [K=1.0000]
Remarks:

I (cd)



1000 lm

$\kappa = 1$



F = 1000 lm
 K = 0.7
 Hcc = 0.8 m
 Hfc = 0.0 m
 Eave = 100 lx

	Pcc	Pw	Pfc
—	70	50	30
—	50	30	20

