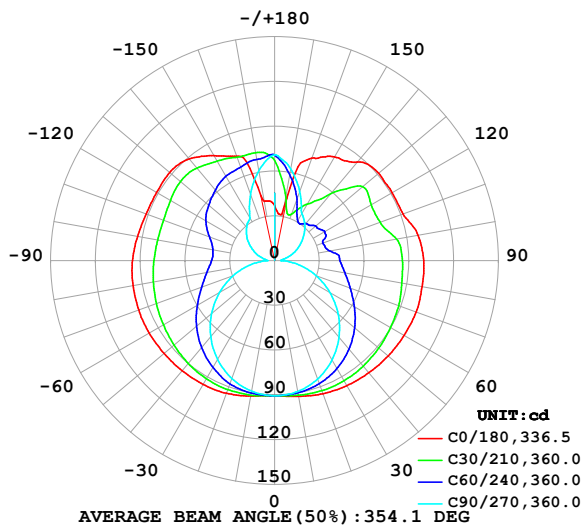


LUMINAIRE PHOTOMETRIC TEST REPORT

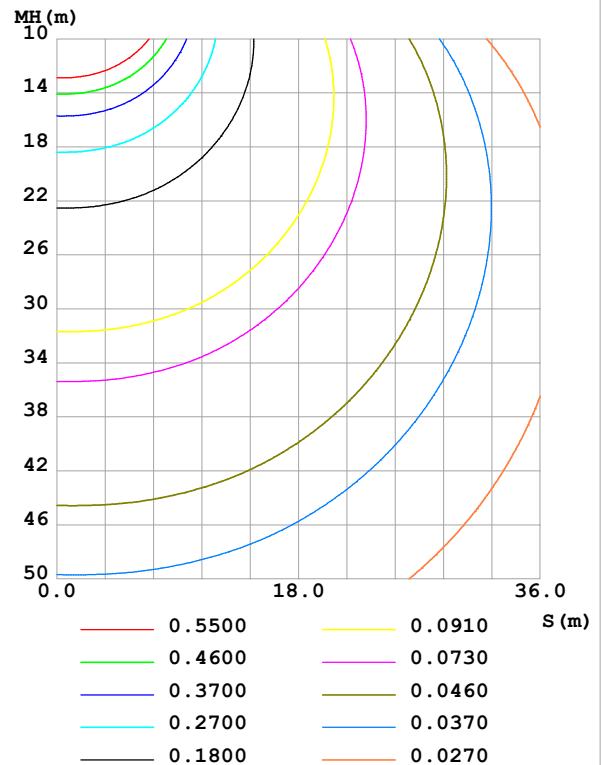
Test:U:24.00V I:0.6794A P:16.31W PF:1.000 Freq:0Hz Lamp Flux:826.361x1 lm		
NAME: SF24-24V-2835-288-U2-4500K	TYPE:	WEIGHT:
SPEC.:	DIM.: Length=1m	SERIAL No.:
MFR.: OLympia lighting	SUR.:	Shielding Angle:

DATA OF LAMP		PHOTOMETRIC DATA				Eff: 50.68 lm/W
MODEL	2835	I _{max} (cd)	101.0	S/MH(C0/180)	1.62	
NOMINAL POWER(W)	16	LOR(%)	100.0	S/MH(C90/270)	1.26	
RATED VOLTAGE(V)	24	TOTAL FLUX(lm)	826.36	η UP,DN(C0-180)	22.0,28.1	
NOMINAL FLUX(lm)	826.361	CIE CLASS	DIFFUSE	η UP,DN(C180-360)	22.2,27.8	
LAMPS INSIDE	1	η up (%)	44.1	CIBSE SHR NOM	1.75	
TEST VOLTAGE(V)		η down (%)	55.9	CIBSE SHR MAX	1.75	

LUMINOUS INTENSITY DISTRIBUTION DIAGRAM



C0 PLANE ISOLUX DIAGRAM (UNIT:lx)



C Range: 0 - 360DEG
C Interval: 30.0DEG
Test Speed: HIGH
Temperature: 25.3 °C
Operators:
Test Date: 2025-03-07

γ Range: 0 - 180DEG
γ Interval: 1.0DEG
Test System: EVERFINE GO-2000B_V1 SYSTEM V2.00.488
Humidity: 65.0%
Test Distance: 6.360m [K=1.0000]
Remarks:

ZONAL FLUX DIAGRAM

ZONAL FLUX DIAGRAM:

γ	C0	C45	C90	C135	C180	C225	C270	C315	γ	Φ zone	Φ total	%lum, lamp
10	92.39	90.77	89.04	90.85	92.17	90.86	88.82	90.40	0- 10	8.653	8.653	1.05,1.05
20	94.89	90.29	84.40	89.98	94.62	89.95	84.07	89.42	10- 20	25.60	34.25	4.14,4.14
30	96.78	88.29	76.97	87.07	95.78	87.09	76.50	86.93	20- 30	40.96	75.21	9.1,9.1
40	98.18	84.97	67.17	82.72	96.35	83.13	66.66	83.11	30- 40	53.46	128.7	15.6,15.6
50	99.35	80.63	55.57	77.24	96.75	78.22	55.18	78.34	40- 50	62.36	191.0	23.1,23.1
60	100.2	75.80	42.79	71.42	97.12	72.99	42.61	73.13	50- 60	67.50	258.5	31.3,31.3
70	101.0	71.31	29.54	66.04	96.91	68.22	29.51	68.26	60- 70	69.24	327.8	39.7,39.7
80	100.3	67.30	16.35	61.72	96.38	64.40	16.34	64.24	70- 80	68.31	396.1	47.9,47.9
90	99.89	64.85	4.465	58.75	95.22	61.61	5.107	61.57	80- 90	65.51	461.6	55.9,55.9
100	97.67	60.45	6.174	58.01	93.29	60.90	7.202	57.16	90-100	62.79	524.4	63.5,63.5
110	91.60	54.98	12.62	60.28	91.65	62.91	12.82	55.27	100-110	59.37	583.7	70.6,70.6
120	91.03	56.90	18.92	64.78	91.31	67.00	18.45	55.83	110-120	57.22	641.0	77.6,77.6
130	91.13	56.66	25.42	68.53	91.88	70.14	24.27	58.53	120-130	54.22	695.2	84.1,84.1
140	86.22	45.60	31.58	70.13	88.98	71.43	29.33	49.72	130-140	46.91	742.1	89.8,89.8
150	80.20	37.36	36.53	70.30	81.18	71.18	33.26	41.40	140-150	36.09	778.2	94.2,94.2
160	73.14	38.50	49.38	70.77	74.47	70.28	47.34	42.55	150-160	26.09	804.3	97.3,97.3
170	35.64	51.01	62.50	70.78	40.43	71.18	61.31	51.81	160-170	16.40	820.7	99.3,99.3
180	36.81	68.95	70.95	68.40	36.93	68.99	70.77	68.37	170-180	5.691	826.4	100,100
DEG	LUMINOUS INTENSITY:cd									UNIT:lm		

Conical surface Flux(90deg): 158.97 lm

%lum = 19.2%

%lamp = 19.2%

Conical surface Flux(130deg): 293.11 lm

%lum = 35.5%

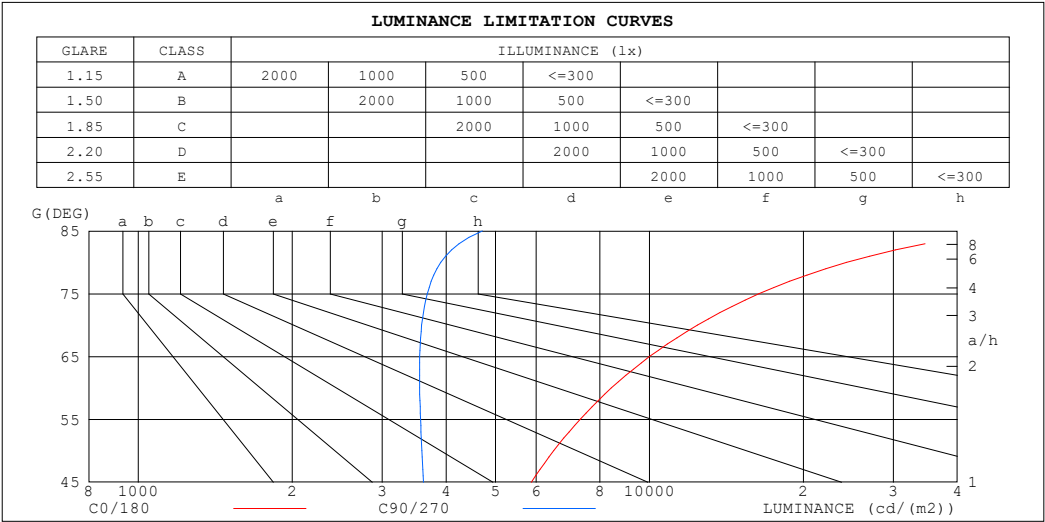
%lamp = 35.5%

C Range: 0 - 360DEG
 C Interval: 30.0DEG
 Test Speed: HIGH
 Temperature:25.3℃
 Operators:
 Test Date:2025-03-07

γ Range: 0 - 180DEG
 γ Interval: 1.0DEG
 Test System:EVERFINE GO-2000B_V1 SYSTEM V2.00.488
 Humidity:65.0%
 Test Distance:6.360m [K=1.0000]
 Remarks:

LUMINANCE LIMITATION CURVES

Test:U:24.00V I:0.6794A P:16.31W PF:1.000 Freq:0Hz Lamp Flux:826.361x1 lm		
NAME: SF24-24V-2835-288-U2-4500K	TYPE:	WEIGHT:
SPEC.:	DIM.: Length=1m	SERIAL No.:
MFR.: OLympia lighting	SUR.:	Shielding Angle:



LUMINANCE cd/(m2)		
G (DEG)	C0/180	C90/270
85	48357	4713
80	24288	3907
75	16369	3675
70	12415	3584
65	10006	3552
60	8427	3551
55	7319	3565
50	6498	3587
45	5874	3611

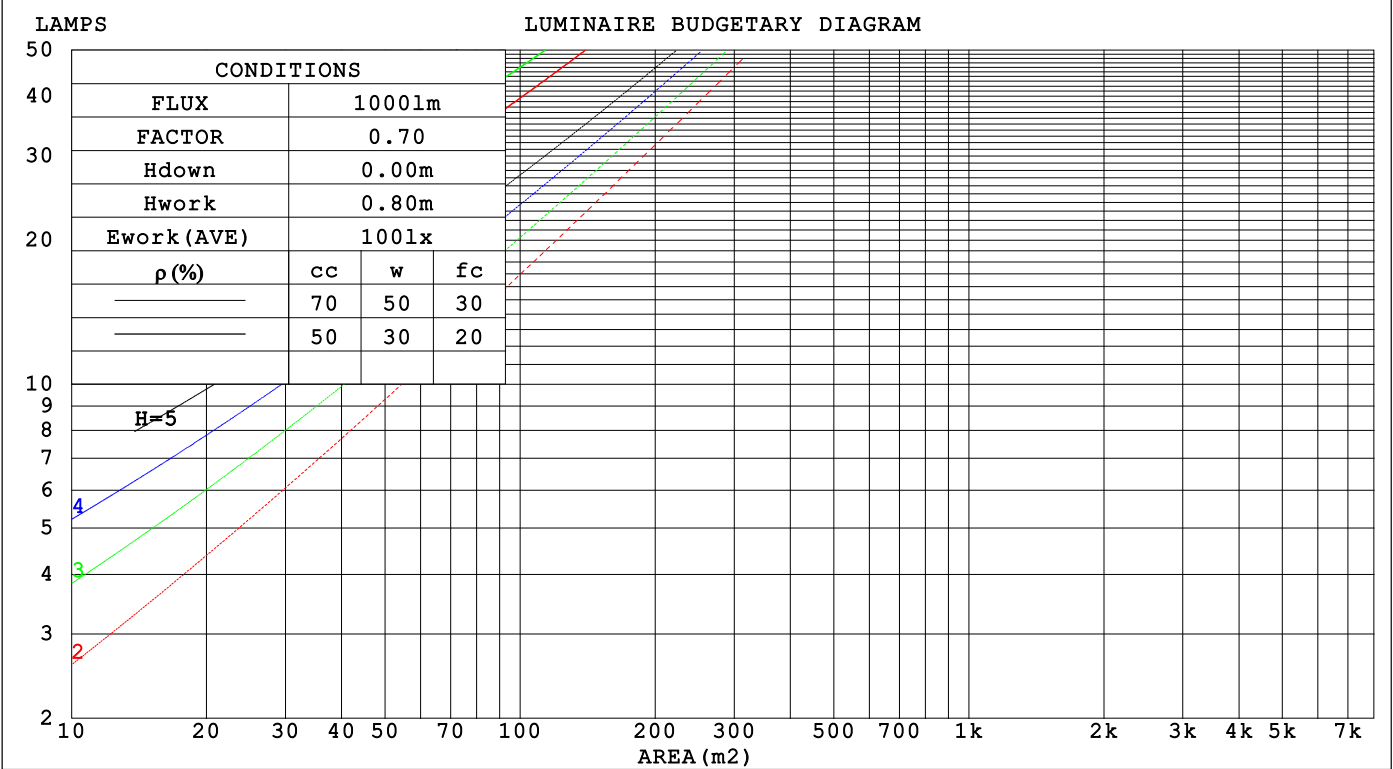
C Range: 0 - 360DEG
C Interval: 30.0DEG
Test Speed: HIGH
Temperature:25.3℃
Operators:
Test Date:2025-03-07

γ Range: 0 - 180DEG
γ Interval: 1.0DEG
Test System:EVERFINE GO-2000B_V1 SYSTEM V2.00.488
Humidity:65.0%
Test Distance:6.360m [K=1.0000]
Remarks:

CU AND LUMINAIRE BUDGETARY ESTIMATE DIAGRAM

Test:U:24.00V I:0.6794A P:16.31W PF:1.000 Freq:0Hz		
Lamp Flux:826.361x1 lm		
NAME: SF24-24V-2835-288-U2-4500K	TYPE:	WEIGHT:
SPEC.:	DIM.: Length=1m	SERIAL No.:
MFR.: OLYMPIA lighting	SUR.:	Shielding Angle:

pcc	80%			70%			50%			30%			10%			0
ρw	50%	30%	10%	50%	30%	10%	50%	30%	10%	50%	30%	10%	50%	30%	10%	0
ρfc	20%			20%			20%			20%			20%			0
RCR	RCR:Room Cavity Ratio			Coefficients of Utilization(CU)												
0.0	1.09	1.09	1.09	1.01	1.01	1.01	.87	.87	.87	.74	.74	.74	.62	.62	.62	.56
1.0	.89	.84	.79	.83	.78	.74	.70	.67	.63	.59	.56	.54	.48	.46	.44	.39
2.0	.76	.68	.62	.70	.63	.58	.60	.54	.50	.50	.46	.42	.41	.37	.35	.30
3.0	.66	.57	.50	.61	.53	.47	.51	.45	.40	.43	.38	.34	.35	.31	.28	.24
4.0	.58	.48	.41	.53	.45	.39	.45	.39	.33	.38	.32	.28	.31	.27	.23	.20
5.0	.51	.42	.35	.47	.39	.33	.40	.33	.28	.33	.28	.24	.27	.23	.20	.16
6.0	.45	.36	.30	.42	.34	.28	.36	.29	.24	.30	.25	.21	.24	.20	.17	.14
7.0	.41	.32	.26	.38	.30	.24	.32	.26	.21	.27	.22	.18	.22	.18	.15	.12
8.0	.37	.28	.23	.34	.27	.21	.29	.23	.18	.25	.20	.16	.20	.16	.13	.11
9.0	.33	.25	.20	.31	.24	.19	.27	.21	.16	.23	.18	.14	.19	.15	.12	.09
10.0	.31	.23	.18	.29	.21	.17	.25	.19	.15	.21	.16	.13	.17	.13	.11	.08



C Range: 0 - 360DEG
C Interval: 30.0DEG
Test Speed: HIGH
Temperature:25.3℃
Operators:
Test Date:2025-03-07

γ Range: 0 - 180DEG
γ Interval: 1.0DEG
Test System:EVERFINE GO-2000B_V1 SYSTEM V2.00.488
Humidity:65.0%
Test Distance:6.360m [K=1.0000]
Remarks:

WEC AND CCEC

Test:U:24.00V I:0.6794A P:16.31W PF:1.000 Freq:0Hz Lamp Flux:826.361x1 lm		
NAME: SF24-24V-2835-288-U2-4500K	TYPE:	WEIGHT:
SPEC.:	DIM.: Length=1m	SERIAL No.:
MFR.: OLympia lighting	SUR.:	Shielding Angle:

pcc	80%			70%			50%			30%			10%			0														
pw	50%	30%	10%	50%	30%	10%	50%	30%	10%	50%	30%	10%	50%	30%	10%	0														
pfc	20%			20%			20%			20%			20%			0														
RCR	RCR:Room Cavity Ratio															Wall Exitance Coefficients(WEC)														
0.0																														
1.0	.385	.219	.069	.365	.208	.066	.326	.187	.060	.291	.168	.054	.258	.149	.048															
2.0	.328	.180	.055	.309	.170	.052	.274	.152	.047	.241	.135	.042	.211	.119	.038															
3.0	.289	.154	.046	.272	.145	.044	.239	.130	.039	.210	.115	.035	.182	.101	.031															
4.0	.259	.134	.040	.243	.127	.038	.214	.113	.034	.186	.100	.030	.161	.087	.027															
5.0	.235	.120	.035	.220	.113	.033	.193	.101	.030	.168	.089	.026	.144	.077	.023															
6.0	.215	.108	.031	.201	.102	.029	.176	.090	.026	.153	.080	.023	.131	.069	.021															
7.0	.198	.098	.028	.186	.092	.026	.163	.082	.024	.141	.072	.021	.121	.063	.018															
8.0	.183	.090	.025	.172	.085	.024	.151	.075	.021	.130	.066	.019	.112	.057	.017															
9.0	.171	.083	.023	.160	.078	.022	.140	.069	.020	.121	.061	.017	.104	.053	.015															
10.0	.160	.077	.021	.150	.072	.020	.131	.064	.018	.114	.056	.016	.097	.049	.014															

pcc	80%			70%			50%			30%			10%			0
pw	50%	30%	10%	50%	30%	10%	50%	30%	10%	50%	30%	10%	50%	30%	10%	0
pfc	20%			20%			20%			20%			20%			0
RCR	RCR:Room Cavity Ratio						Ceiling Cavity Exitance Coefficients(CCEC)									
0.0	.527	.527	.527	.450	.450	.450	.307	.307	.307	.177	.177	.177	.056	.056	.056	
1.0	.525	.495	.468	.449	.424	.402	.307	.292	.278	.177	.169	.162	.057	.054	.052	
2.0	.518	.473	.435	.444	.407	.376	.304	.282	.262	.175	.164	.154	.056	.053	.050	
3.0	.511	.458	.415	.438	.395	.360	.301	.274	.252	.174	.160	.149	.056	.052	.049	
4.0	.504	.446	.402	.432	.385	.349	.297	.269	.246	.172	.157	.145	.055	.051	.048	
5.0	.497	.437	.392	.427	.378	.341	.294	.264	.241	.170	.155	.143	.055	.051	.047	
6.0	.490	.429	.386	.421	.372	.336	.290	.260	.238	.168	.153	.141	.054	.050	.047	
7.0	.483	.423	.381	.415	.367	.332	.287	.257	.235	.167	.151	.140	.054	.050	.046	
8.0	.476	.418	.378	.410	.362	.329	.284	.254	.234	.165	.150	.139	.053	.049	.046	
9.0	.470	.413	.375	.405	.359	.327	.281	.252	.232	.164	.149	.138	.053	.049	.046	
10.0	.465	.409	.372	.401	.356	.325	.278	.250	.231	.162	.148	.138	.053	.049	.046	

C Range: 0 - 360DEG
C Interval: 30.0DEG
Test Speed: HIGH
Temperature:25.3℃
Operators:
Test Date:2025-03-07

γ Range: 0 - 180DEG
γ Interval: 1.0DEG
Test System:EVERFINE GO-2000B_V1 SYSTEM V2.00.488
Humidity:65.0%
Test Distance:6.360m [K=1.0000]
Remarks:

UGR(Unified Glare Rating) Table

Test:U:24.00V I:0.6794A P:16.31W PF:1.000 Freq:0Hz Lamp Flux:826.361x1 lm										
NAME: SF24-24V-2835-288-U2-4500K					TYPE:			WEIGHT:		
SPEC.:					DIM.: Length=1m			SERIAL No.:		
MFR.: OLympia lighting					SUR.:			Shielding Angle:		
ceiling/cavity	0.7	0.7	0.5	0.5	0.3	0.7	0.7	0.5	0.5	0.3
walls	0.5	0.3	0.5	0.3	0.3	0.5	0.3	0.5	0.3	0.3
working plane	0.2	0.2	0.2	0.2	0.2	0.2	0.2	0.2	0.2	0.2
Room dimensions	Viewed crosswise					Viewed endwise				
x = 2H y = 2H	20.7	21.8	21.5	22.6	23.7	17.3	18.4	18.1	19.2	20.2
3H	24.0	25.0	24.8	25.9	26.9	19.1	20.1	19.9	20.9	22.0
4H	25.9	26.8	26.7	27.7	28.8	19.9	20.9	20.8	21.7	22.8
6H	27.9	28.8	28.8	29.7	30.8	20.7	21.6	21.5	22.4	23.5
8H	29.1	30.0	30.0	30.8	32.0	21.0	21.8	21.9	22.7	23.9
12H	30.4	31.3	31.3	32.2	33.3	21.3	22.1	22.1	23.0	24.1
4H 2H	21.2	22.2	22.1	23.0	24.1	18.9	19.8	19.7	20.7	21.8
3H	24.8	25.6	25.7	26.5	27.6	20.9	21.8	21.8	22.7	23.8
4H	26.8	27.6	27.7	28.5	29.7	22.0	22.7	22.9	23.6	24.8
6H	29.1	29.8	30.0	30.7	31.9	23.0	23.6	23.9	24.6	25.7
8H	30.4	31.0	31.3	32.0	33.2	23.4	24.0	24.3	24.9	26.1
12H	31.9	32.5	32.8	33.4	34.6	23.8	24.3	24.7	25.3	26.5
8H 4H	27.2	27.8	28.1	28.7	30.0	23.6	24.2	24.5	25.1	26.4
6H	29.8	30.3	30.8	31.3	32.5	25.0	25.5	25.9	26.4	27.7
8H	31.3	31.8	32.3	32.8	34.0	25.6	26.1	26.6	27.1	28.3
12H	33.0	33.5	34.0	34.4	35.7	26.2	26.7	27.2	27.6	28.9
12H 4H	27.2	27.8	28.1	28.7	29.9	24.2	24.8	25.1	25.7	26.9
6H	29.9	30.4	30.9	31.4	32.6	25.8	26.3	26.8	27.3	28.5
8H	31.6	32.0	32.5	33.0	34.2	26.7	27.1	27.7	28.1	29.3
Variations with the observer position at spacings(CIE Pub.117):										
S = 1.0H	+ 0.1 / - 0.1					+ 0.1 / - 0.1				
1.5H	+ 0.2 / - 0.3					+ 0.2 / - 0.2				
2.0H	+ 0.3 / - 0.4					+ 0.3 / - 0.4				

CIE Pub.117, 826.4 lm Total Lamp Luminous Flux Correct (8log(F/F0) = -0.7)
Area: 0.024 m2

C Range: 0 - 360DEG
C Interval: 30.0DEG
Test Speed: HIGH
Temperature:25.3℃
Operators:
Test Date:2025-03-07

γ Range: 0 - 180DEG
γ Interval: 1.0DEG
Test System:EVERFINE GO-2000B_V1 SYSTEM V2.00.488
Humidity:65.0%
Test Distance:6.360m [K=1.0000]
Remarks:

UTILIZATION FACTORS TABLE

Test:U:24.00V I:0.6794A P:16.31W PF:1.000 Freq:0Hz Lamp Flux:826.361x1 lm		
NAME: SF24-24V-2835-288-U2-4500K	TYPE:	WEIGHT:
SPEC.:	DIM.: Length=1m	SERIAL No.:
MFR.: OLympia lighting	SUR.:	Shielding Angle:

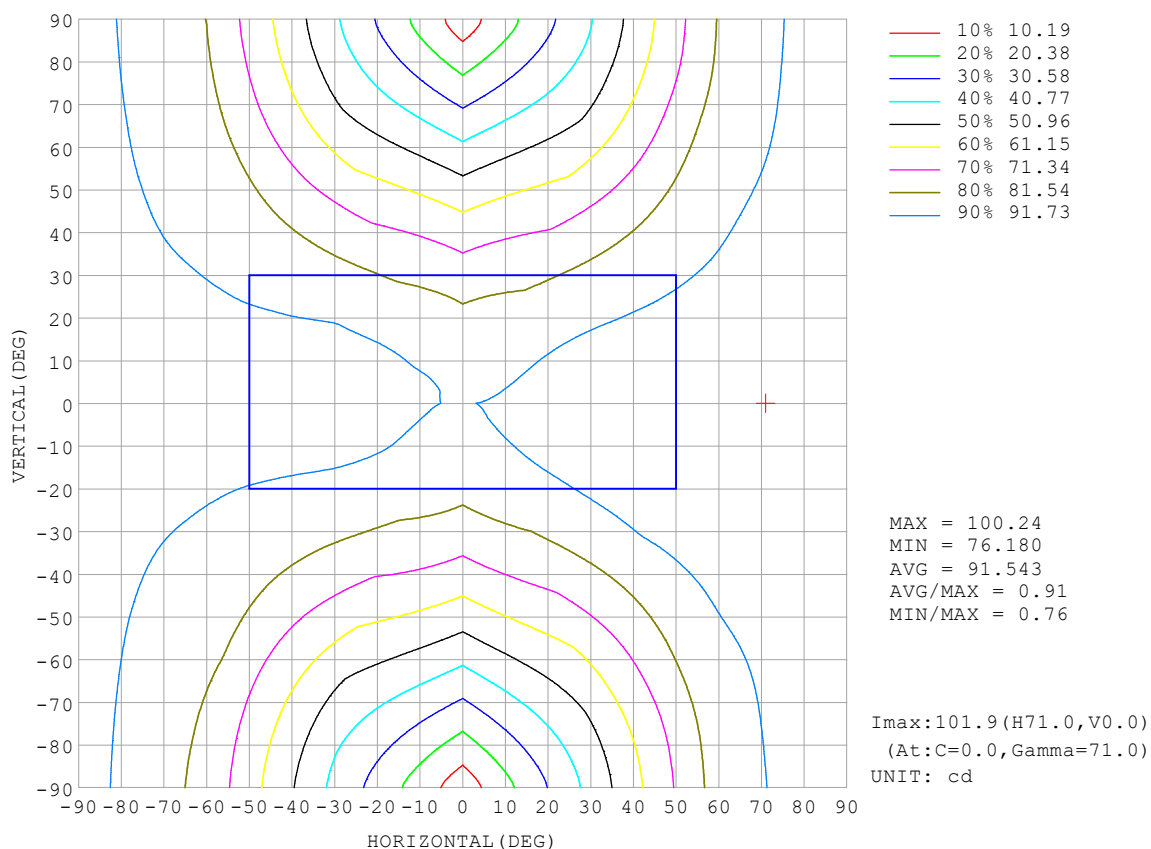
REFLECTANCE										
Ceiling	0.8	0.8	0.8	0.7	0.7	0.7	0.5	0.5	0.5	0
Walls	0.7	0.5	0.3	0.7	0.5	0.3	0.7	0.5	0.3	0
Working plane	0.2	0.2	0.2	0.2	0.2	0.2	0.2	0.2	0.2	0
ROOM INDEX	UTILIZATION FACTORS (PERCENT) $k(RI) \times RCR = 5$									
$k = 0.60$	40	27	20	38	26	20	34	24	18	11
0.80	48	35	27	46	34	26	41	31	24	15
1.00	56	42	34	52	40	32	46	38	30	18
1.25	63	49	40	59	47	38	52	42	35	22
1.50	68	55	46	63	52	43	55	46	39	25
2.00	75	63	54	70	60	52	61	53	46	29
2.50	80	69	60	75	65	57	64	57	51	32
3.00	84	74	66	78	69	62	67	60	55	34
4.00	89	80	73	83	75	69	71	65	60	38
5.00	92	85	78	86	79	73	74	68	64	40
ROOM INDEX	UF (total)									Direct
According to DIN EN 13032-2 2004			Suspended					SHRNOM = 1.25		

C Range: 0 - 360DEG
 C Interval: 30.0DEG
 Test Speed: HIGH
 Temperature: 25.3 °C
 Operators:
 Test Date: 2025-03-07

γ Range: 0 - 180DEG
 γ Interval: 1.0DEG
 Test System: EVERFINE GO-2000B_V1 SYSTEM V2.00.488
 Humidity: 65.0%
 Test Distance: 6.360m [K=1.0000]
 Remarks:

ISOCANDELA DIAGRAM

Test:U:24.00V I:0.6794A P:16.31W PF:1.000 Freq:0Hz Lamp Flux:826.361x1 lm		
NAME: SF24-24V-2835-288-U2-4500K	TYPE:	WEIGHT:
SPEC.:	DIM.: Length=1m	SERIAL No.:
MFR.: OLympia lighting	SUR.:	Shielding Angle:

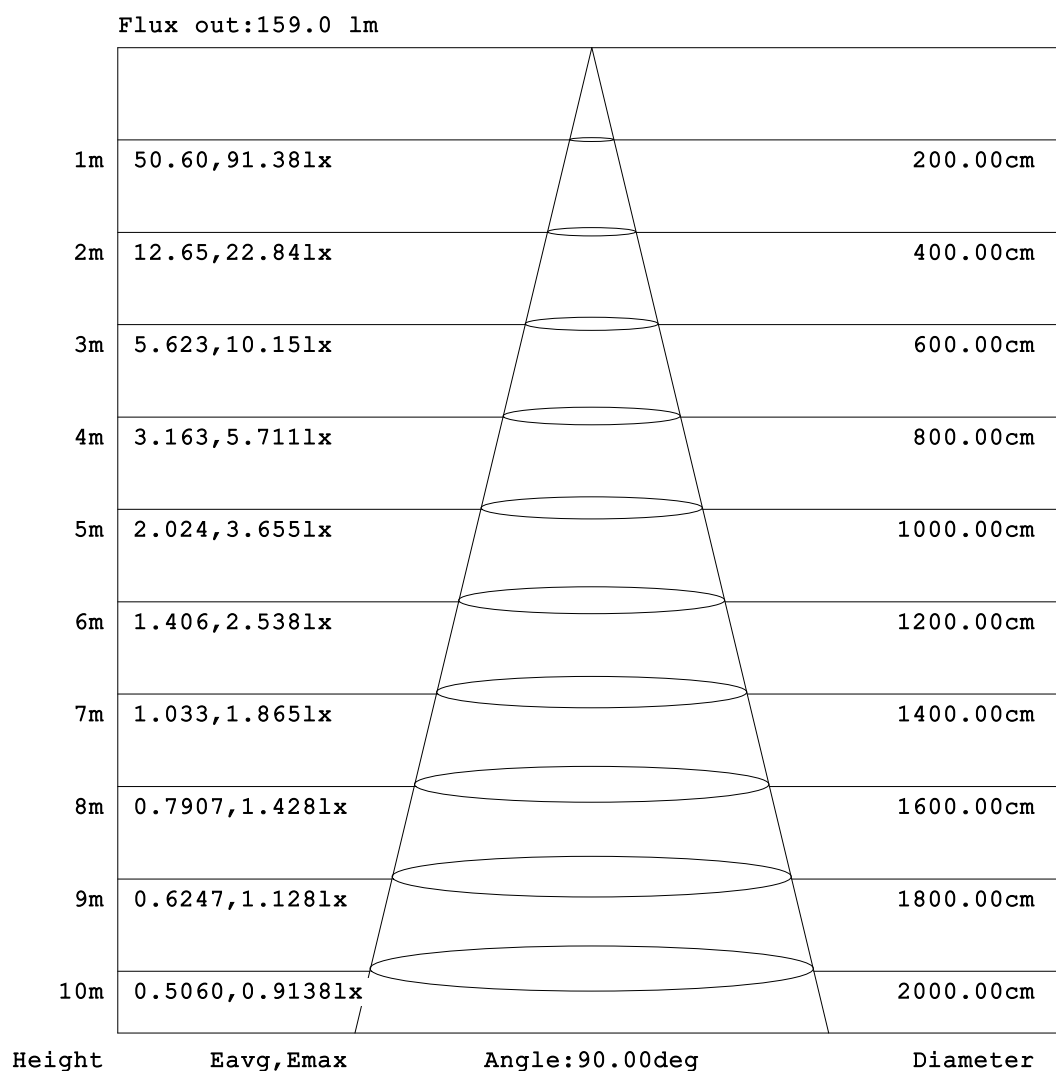


C Range: 0 - 360DEG
C Interval: 30.0DEG
Test Speed: HIGH
Temperature:25.3℃
Operators:
Test Date:2025-03-07

γ Range: 0 - 180DEG
γ Interval: 1.0DEG
Test System:EVERFINE GO-2000B_V1 SYSTEM V2.00.488
Humidity:65.0%
Test Distance:6.360m [K=1.0000]
Remarks:

AAI Figure

Test:U:24.00V I:0.6794A P:16.31W PF:1.000 Freq:0Hz Lamp Flux:826.361x1 lm		
NAME: SF24-24V-2835-288-U2-4500K	TYPE:	WEIGHT:
SPEC.:	DIM.: Length=1m	SERIAL No.:
MFR.: OLympia lighting	SUR.:	Shielding Angle:



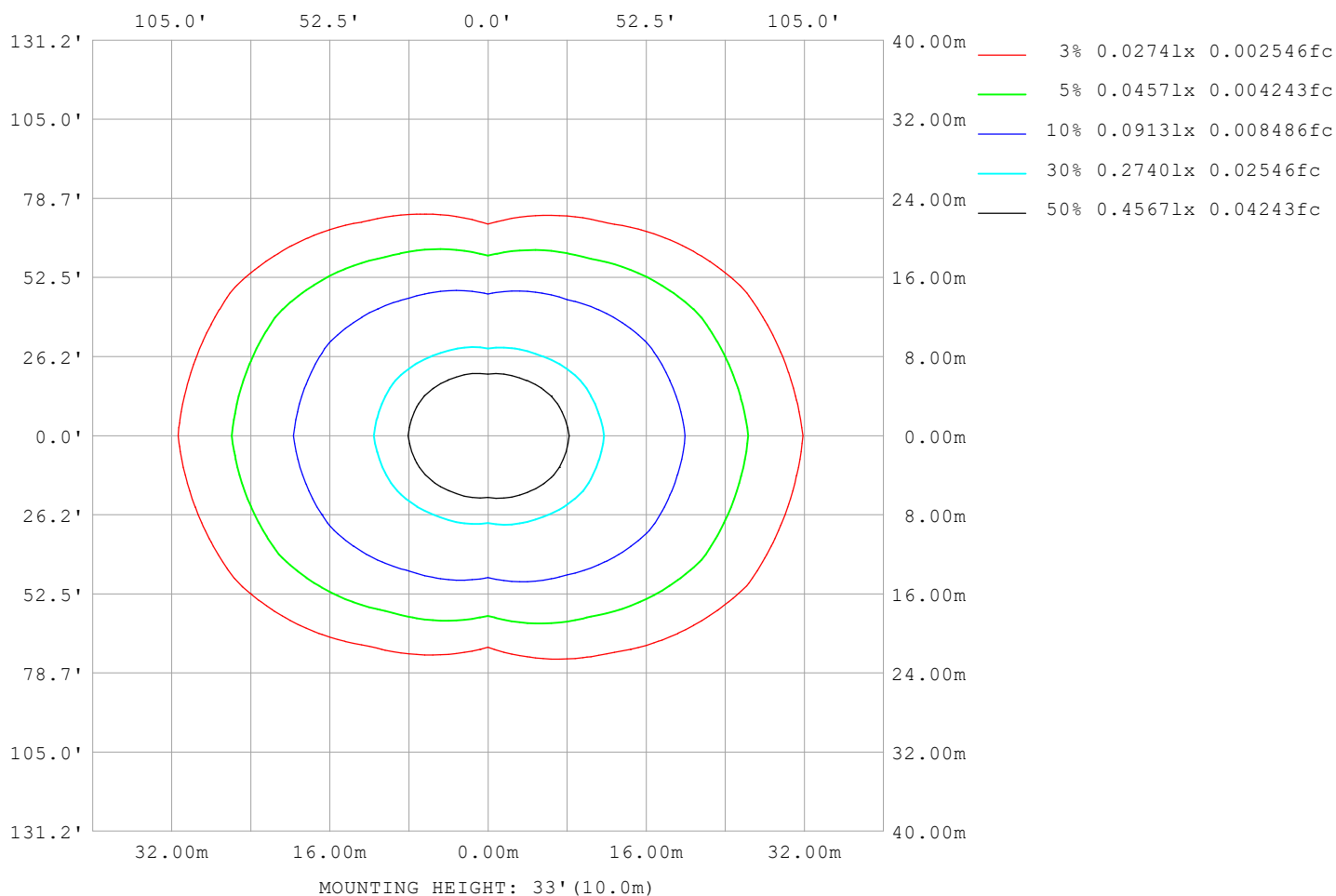
Note: The Curves indicate the illuminated area and the average illumination when the luminaire is at different distance.

C Range: 0 - 360DEG
C Interval: 30.0DEG
Test Speed: HIGH
Temperature: 25.3°C
Operators:
Test Date: 2025-03-07

γ Range: 0 - 180DEG
γ Interval: 1.0DEG
Test System: EVERFINE GO-2000B_V1 SYSTEM V2.00.488
Humidity: 65.0%
Test Distance: 6.360m [K=1.0000]
Remarks:

ISOLUX DIAGRAM

Test:U:24.00V I:0.6794A P:16.31W PF:1.000 Freq:0Hz Lamp Flux:826.36lx1 lm		
NAME: SF24-24V-2835-288-U2-4500K	TYPE:	WEIGHT:
SPEC.:	DIM.: Length=1m	SERIAL No.:
MFR.: OLympia lighting	SUR.:	Shielding Angle:



C Range: 0 - 360DEG
C Interval: 30.0DEG
Test Speed: HIGH
Temperature: 25.3°C
Operators:
Test Date: 2025-03-07

γ Range: 0 - 180DEG
γ Interval: 1.0DEG
Test System: EVERFINE GO-2000B_V1 SYSTEM V2.00.488
Humidity: 65.0%
Test Distance: 6.360m [K=1.0000]
Remarks:

LED Avg.L Report

Test:U:24.00V I:0.6794A P:16.31W PF:1.000 Freq:0Hz Lamp Flux:826.361x1 lm		
NAME: SF24-24V-2835-288-U2-4500K	TYPE:	WEIGHT:
SPEC.:	DIM.: Length=1m	SERIAL No.:
MFR.: OLympia lighting	SUR.:	Shielding Angle:

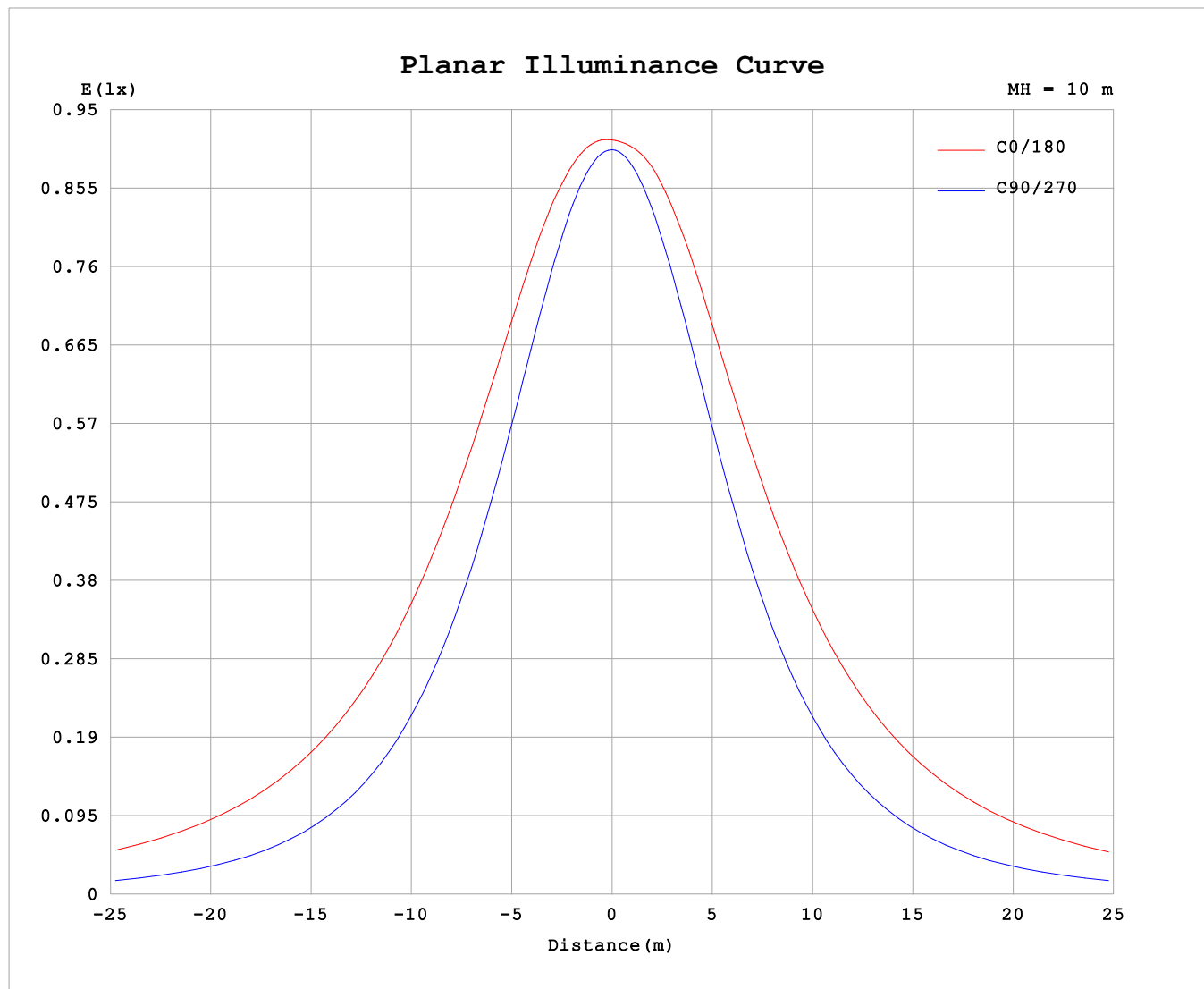
AvgL	cd/m2
L_0~180 (65) av	9746
L_0~180 (75) av	15889
L_0~180 (85) av	46889
L_90~270 (65) av	3563
L_90~270 (75) av	3690
L_90~270 (85) av	4727
L_45 (65) av	7019
L_45 (75) av	10782
L_45 (85) av	30554

Standard: GB/T 29293-2012

C Range: 0 - 360DEG
C Interval: 30.0DEG
Test Speed: HIGH
Temperature:25.3℃
Operators:
Test Date:2025-03-07

γ Range: 0 - 180DEG
γ Interval: 1.0DEG
Test System:EVERFINE GO-2000B_V1 SYSTEM V2.00.488
Humidity:65.0%
Test Distance:6.360m [K=1.0000]
Remarks:

Planar Illuminance Curve



C Range: 0 - 360DEG
C Interval: 30.0DEG
Test Speed: HIGH
Temperature: 25.3 °C
Operators:
Test Date: 2025-03-07

γ Range: 0 - 180DEG
 γ Interval: 1.0DEG
Test System: EVERFINE GO-2000B_V1 SYSTEM V2.00.488
Humidity: 65.0%
Test Distance: 6.360m [K=1.0000]
Remarks:

LUMINOUS DISTRIBUTION INTENSITY DATA

Test:U:24.00V I:0.6794A P:16.31W PF:1.000 Freq:0Hz Lamp Flux:826.361x1 lm		
NAME: SF24-24V-2835-288-U2-4500K	TYPE:	WEIGHT:
SPEC.:	DIM.: Length=1m	SERIAL No.:
MFR.: OLympia lighting	SUR.:	Shielding Angle:

Table--1

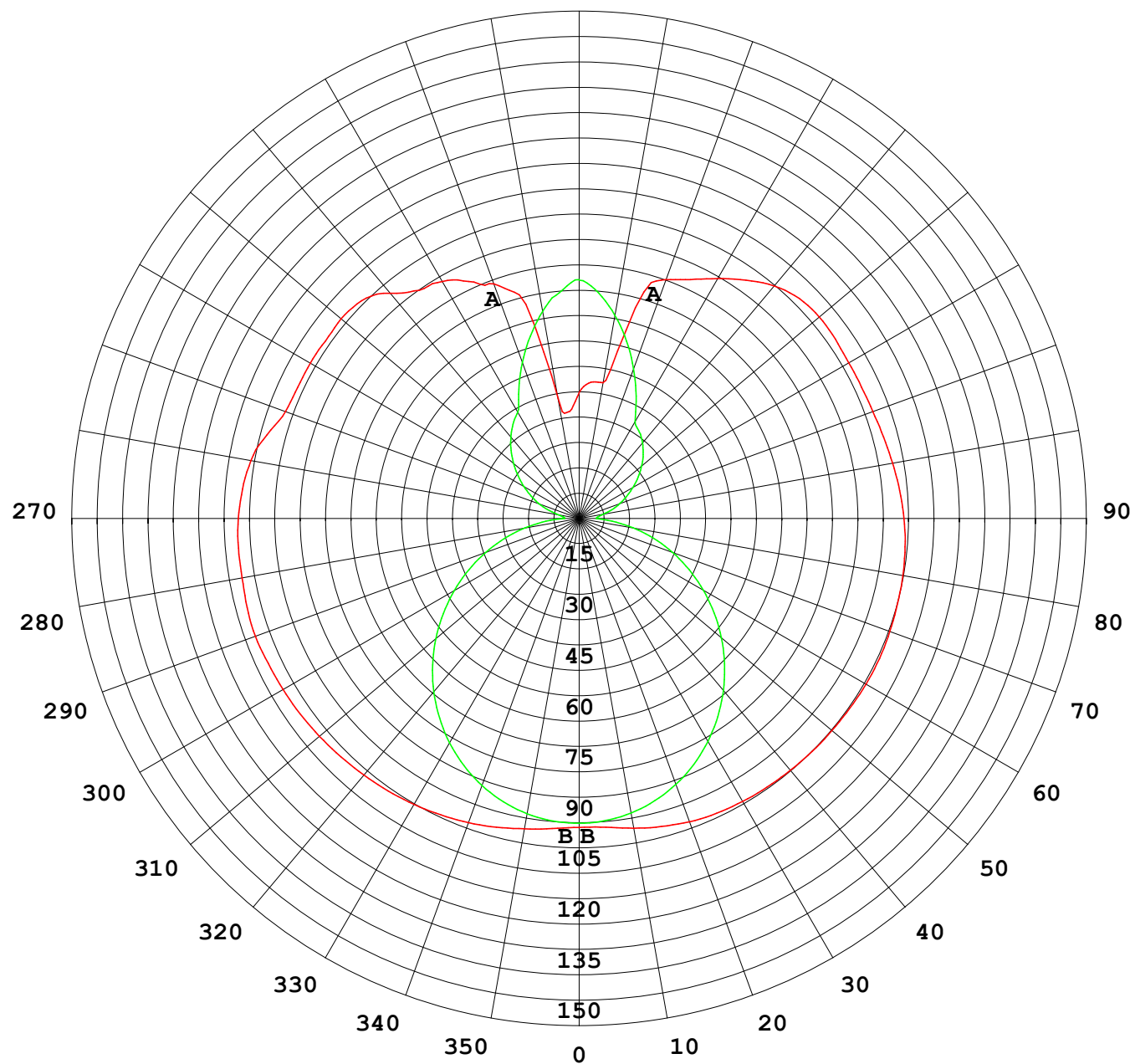
UNIT: cd

C (DEG) γ (DEG)	0	30	60	90	120	150	180	210	240	270	300	330						
0	90.5	90.5	90.5	90.5	90.5	90.5	90.5	90.5	90.5	90.5	90.5	90.5						
5	91.3	90.9	90.4	90.2	90.5	91.0	90.9	90.9	90.5	90.1	90.2	90.7						
10	92.4	91.6	90.0	89.0	90.1	91.6	92.2	91.6	90.1	88.8	89.6	91.2						
15	93.7	92.2	89.1	87.1	89.2	92.0	93.5	91.7	89.3	86.8	88.5	91.7						
20	94.9	92.8	87.8	84.4	87.7	92.3	94.6	92.0	87.9	84.1	86.8	92.0						
25	95.9	93.0	85.9	81.0	85.4	92.1	95.4	92.0	85.5	80.6	84.6	92.1						
30	96.8	93.0	83.5	77.0	82.6	91.6	95.8	91.4	82.7	76.5	82.0	91.9						
35	97.5	92.8	80.8	72.3	79.4	90.8	96.1	90.9	79.7	71.8	78.9	91.5						
40	98.2	92.4	77.5	67.2	75.7	89.7	96.3	90.0	76.2	66.7	75.4	90.8						
45	98.8	91.8	73.9	61.5	71.5	88.6	96.6	89.1	72.3	61.1	71.7	90.0						
50	99.4	91.1	70.1	55.6	67.2	87.3	96.8	88.1	68.3	55.2	67.6	89.1						
55	99.9	90.5	65.9	49.3	62.7	86.0	96.9	87.0	64.2	49.0	63.3	88.2						
60	100	89.8	61.7	42.8	58.0	84.8	97.1	86.1	59.8	42.6	58.9	87.3						
65	101	89.1	57.7	36.2	53.5	83.8	97.1	85.2	55.8	36.1	54.7	86.5						
70	101	88.5	54.0	29.5	49.3	82.8	96.9	84.3	52.0	29.5	50.8	85.8						
75	101	87.5	50.7	22.9	45.7	81.7	96.6	83.3	48.9	22.9	47.3	85.0						
80	100	86.6	47.9	16.3	42.7	80.7	96.4	82.5	46.2	16.3	44.5	83.9						
85	100	86.0	45.6	9.90	40.3	79.8	95.9	81.7	43.9	9.88	42.1	83.1						
90	99.9	85.7	43.9	4.46	38.4	79.1	95.2	80.9	42.2	5.11	40.4	82.8						
95	99.0	85.1	43.1	4.67	37.6	78.4	94.3	80.1	41.6	5.60	38.9	82.4						
100	97.7	83.1	37.7	6.17	38.2	77.8	93.3	79.6	42.1	7.20	33.7	80.6						
105	94.8	78.3	35.1	9.08	39.9	77.4	92.4	79.2	43.6	9.98	32.9	77.3						
110	91.6	75.3	34.5	12.6	43.0	77.6	91.6	79.2	46.5	12.8	35.0	75.6						
115	91.0	74.4	38.1	15.7	46.8	78.2	91.3	79.8	50.0	15.6	33.7	75.2						
120	91.0	74.7	39.0	18.9	50.4	79.1	91.3	80.7	53.3	18.5	36.5	75.2						
125	90.8	76.8	36.9	22.2	53.2	80.5	91.7	81.8	55.8	21.4	36.8	76.0						
130	91.1	77.1	36.1	25.4	55.6	81.5	91.9	82.5	57.7	24.3	40.7	76.3						
135	90.3	68.0	33.5	28.6	57.9	81.5	91.2	82.4	59.7	26.9	39.7	63.9						
140	86.2	58.5	32.6	31.6	60.0	80.3	89.0	81.0	61.8	29.3	39.2	60.2						
145	81.7	49.4	30.0	34.2	62.0	78.4	85.3	78.8	63.9	31.3	38.6	53.1						
150	80.2	43.7	31.0	36.5	63.7	76.9	81.2	77.0	65.3	33.3	37.2	45.6						
155	76.6	38.4	35.4	42.4	65.5	75.7	77.3	75.6	65.9	40.1	38.6	42.9						
160	73.1	33.1	43.9	49.4	66.7	74.8	74.5	73.8	66.8	47.3	45.1	40.0						
165	67.8	33.0	51.5	56.1	68.1	73.3	63.9	73.3	68.3	54.5	51.7	38.3						
170	35.6	43.5	58.6	62.5	68.9	72.7	40.4	73.4	68.9	61.3	58.1	45.5						
175	31.5	55.3	65.6	67.4	69.4	71.7	40.1	72.4	70.0	67.3	64.4	55.5						
180	36.8	67.2	70.7	70.9	70.3	66.5	36.9	67.1	70.9	70.8	70.4	66.3						

C Range: 0 - 360DEG
C Interval: 30.0DEG
Test Speed: HIGH
Temperature:25.3℃
Operators:
Test Date:2025-03-07

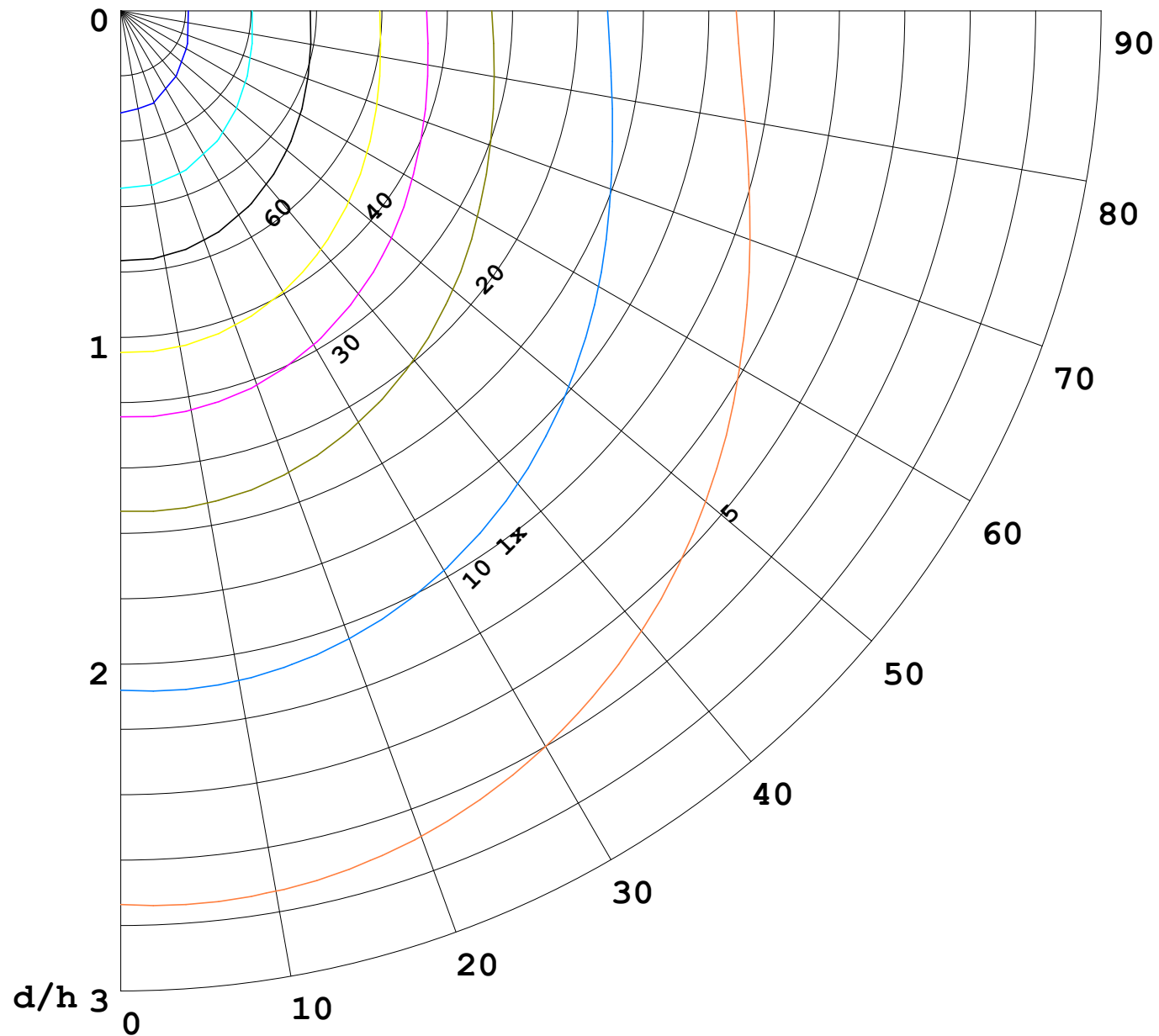
γ Range: 0 - 180DEG
γ Interval: 1.0DEG
Test System:EVERFINE GO-2000B_V1 SYSTEM V2.00.488
Humidity:65.0%
Test Distance:6.360m [K=1.0000]
Remarks:

I (cd)



1000 lm

$\kappa = 1$



F = 1000 lm
 K = 0.7
 Hcc = 0.8 m
 Hfc = 0.0 m
 Eave = 100 lx

	Pcc	Pw	Pfc
—————	70	50	30
—————	50	30	20

