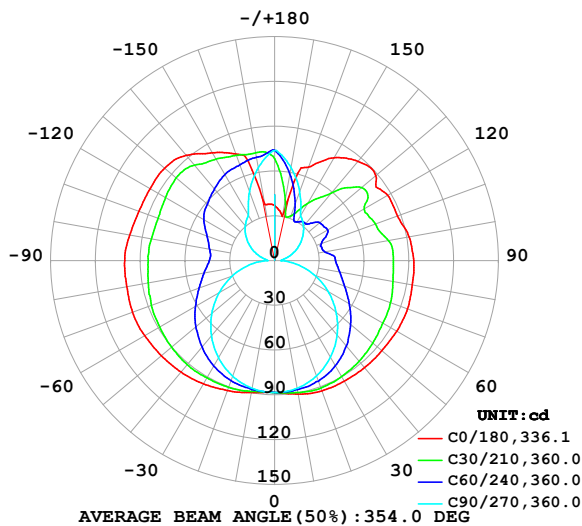


LUMINAIRE PHOTOMETRIC TEST REPORT

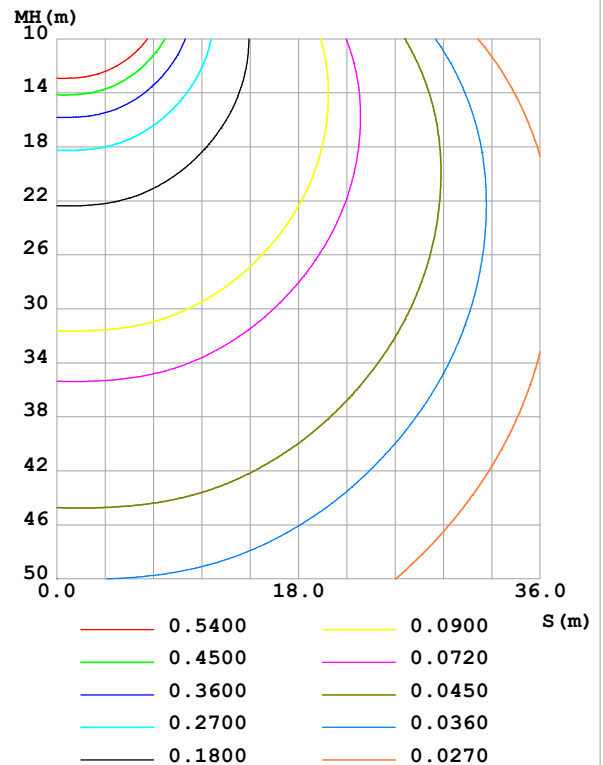
Test:U:24.00V I:0.6908A P:16.58W PF:1.000 Freq:0Hz Lamp Flux:825.804x1 lm		
NAME: SF24-24V-2835-288-U2-3000K	TYPE:	WEIGHT:
SPEC.:	DIM.: Length=1m	SERIAL No.:
MFR.: OLympia lighting	SUR.:	Shielding Angle:

DATA OF LAMP		PHOTOMETRIC DATA				Eff: 49.81 lm/W
MODEL	2835	I _{max} (cd)	101.3	S/MH(C0/180)	1.67	
NOMINAL POWER(W)	16	LOR(%)	100.0	S/MH(C90/270)	1.27	
RATED VOLTAGE(V)	24	TOTAL FLUX(lm)	825.80	η UP,DN(C0-180)	22.0,27.4	
NOMINAL FLUX(lm)	825.804	CIE CLASS	DIFFUSE	η UP,DN(C180-360)	22.8,27.9	
LAMPS INSIDE	1	η up (%)	44.7	CIBSE SHR NOM	1.75	
TEST VOLTAGE(V)		η down (%)	55.3	CIBSE SHR MAX	1.75	

LUMINOUS INTENSITY DISTRIBUTION DIAGRAM



C0 PLANE ISOLUX DIAGRAM (UNIT:lx)



C Range: 0 - 360DEG
C Interval: 30.0DEG
Test Speed: HIGH
Temperature:25.3℃
Operators:
Test Date:2025-03-03

γ Range: 0 - 180DEG
γ Interval: 1.0DEG
Test System:EVERFINE GO-2000B_V1 SYSTEM V2.00.488
Humidity:65.0%
Test Distance:6.360m [K=1.0000]
Remarks:

ZONAL FLUX DIAGRAM

ZONAL FLUX DIAGRAM:

γ	C0	C45	C90	C135	C180	C225	C270	C315	γ	Φ zone	Φ total	%lum, lamp
10	90.85	88.82	86.86	88.50	89.73	88.37	86.90	88.86	0- 10	8.451	8.451	1.02,1.02
20	92.84	88.45	82.21	87.89	92.61	88.00	82.41	88.34	10- 20	25.07	33.52	4.06,4.06
30	93.31	85.63	74.86	85.86	95.38	86.18	75.25	85.69	20- 30	40.17	73.68	8.92,8.92
40	93.70	81.44	65.24	82.59	97.61	83.46	65.91	81.34	30- 40	52.54	126.2	15.3,15.3
50	93.90	76.30	53.86	78.35	99.15	79.72	54.93	76.22	40- 50	61.43	187.7	22.7,22.7
60	94.55	70.95	41.42	73.54	100.5	75.21	42.86	70.80	50- 60	66.70	254.4	30.8,30.8
70	94.82	66.43	28.40	69.15	101.3	71.02	30.17	66.05	60- 70	68.74	323.1	39.1,39.1
80	93.74	62.61	15.40	65.32	100.6	67.22	17.27	62.05	70- 80	67.99	391.1	47.4,47.4
90	93.28	60.42	4.316	62.97	100.5	64.55	5.208	59.18	80- 90	65.34	456.4	55.3,55.3
100	91.48	56.06	6.517	63.17	98.62	64.24	6.902	55.23	90-100	62.97	519.4	62.9,62.9
110	87.61	52.88	12.11	65.32	96.82	65.81	12.55	52.63	100-110	59.89	579.3	70.1,70.1
120	87.56	55.38	18.29	69.45	96.39	69.76	18.77	56.35	110-120	58.00	637.3	77.2,77.2
130	88.65	58.07	24.53	71.10	96.30	72.67	25.12	57.08	120-130	55.42	692.7	83.9,83.9
140	86.85	45.88	30.23	71.72	92.08	73.25	30.66	50.17	130-140	47.90	740.6	89.7,89.7
150	79.59	37.09	34.96	72.17	83.40	72.72	35.27	42.92	140-150	36.85	777.5	94.1,94.1
160	66.65	36.10	49.29	71.23	76.12	71.70	49.29	42.74	150-160	26.19	803.6	97.3,97.3
170	30.12	50.25	63.38	71.50	38.17	71.84	63.19	53.23	160-170	16.37	820.0	99.3,99.3
180	36.97	71.20	73.84	71.12	37.06	71.12	73.70	71.21	170-180	5.783	825.8	100,100
DEG	LUMINOUS INTENSITY:cd									UNIT:lm		

Conical surface Flux(90deg): 156.06 lm

%lum = 18.9%

%lamp = 18.9%

Conical surface Flux(130deg): 288.64 lm

%lum = 35.0%

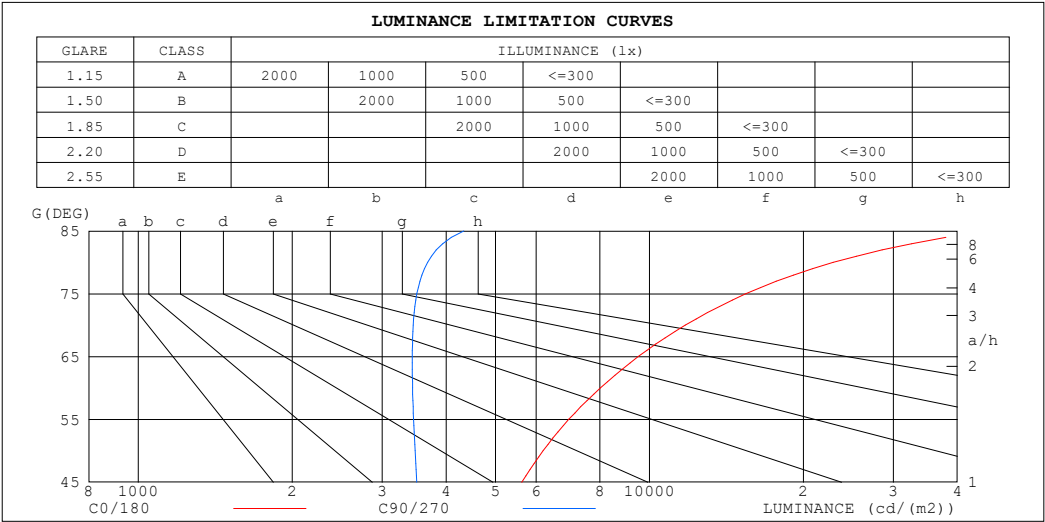
%lamp = 35.0%

C Range: 0 - 360DEG
 C Interval: 30.0DEG
 Test Speed: HIGH
 Temperature:25.3℃
 Operators:
 Test Date:2025-03-03

γ Range: 0 - 180DEG
 γ Interval: 1.0DEG
 Test System:EVERFINE GO-2000B_V1 SYSTEM V2.00.488
 Humidity:65.0%
 Test Distance:6.360m [K=1.0000]
 Remarks:

LUMINANCE LIMITATION CURVES

Test:U:24.00V I:0.6908A P:16.58W PF:1.000 Freq:0Hz Lamp Flux:825.804x1 lm		
NAME: SF24-24V-2835-288-U2-3000K	TYPE:	WEIGHT:
SPEC.:	DIM.: Length=1m	SERIAL No.:
MFR.: OLympia lighting	SUR.:	Shielding Angle:



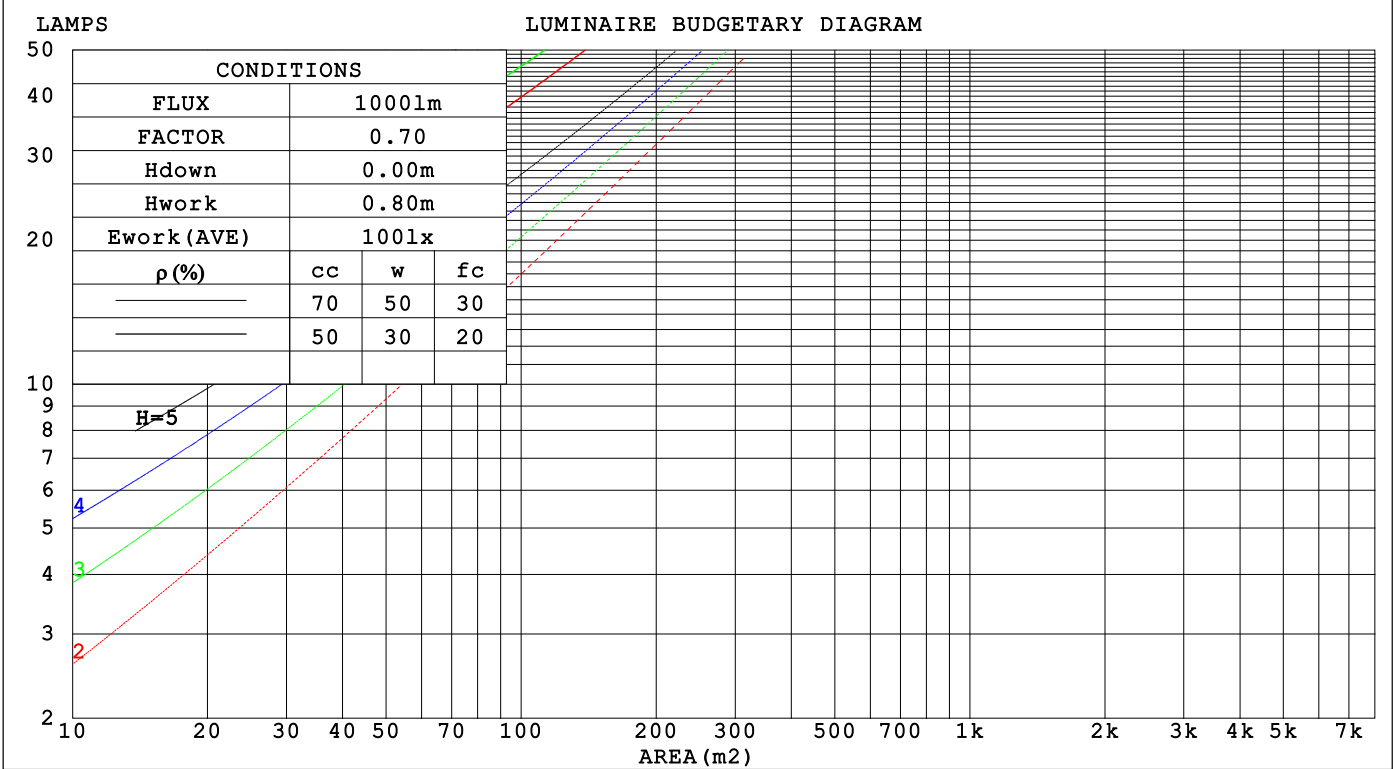
LUMINANCE cd/(m2)		
G (DEG)	C0/180	C90/270
85	45563	4331
80	22887	3682
75	15441	3507
70	11754	3448
65	9508	3434
60	8017	3439
55	6956	3455
50	6193	3479
45	5627	3507

C Range: 0 - 360DEG	γ Range: 0 - 180DEG
C Interval: 30.0DEG	γ Interval: 1.0DEG
Test Speed: HIGH	Test System:EVERFINE GO-2000B_V1 SYSTEM V2.00.488
Temperature:25.3℃	Humidity:65.0%
Operators:	Test Distance:6.360m [K=1.0000]
Test Date:2025-03-03	Remarks:

CU AND LUMINAIRE BUDGETARY ESTIMATE DIAGRAM

Test:U:24.00V I:0.6908A P:16.58W PF:1.000 Freq:0Hz		
Lamp Flux:825.804x1 lm		
NAME: SF24-24V-2835-288-U2-3000K	TYPE:	WEIGHT:
SPEC.:	DIM.: Length=1m	SERIAL No.:
MFR.: OLYMPIA lighting	SUR.:	Shielding Angle:

pcc	80%			70%			50%			30%			10%			0														
pw	50%	30%	10%	50%	30%	10%	50%	30%	10%	50%	30%	10%	50%	30%	10%	0														
pfc	20%			20%			20%			20%			20%			0														
RCR	RCR:Room Cavity Ratio															Coefficients of Utilization(CU)														
0.0	1.08	1.08	1.08	1.01	1.01	1.01	.86	.86	.86	.73	.73	.73	.61	.61	.61	.55														
1.0	.89	.84	.79	.83	.78	.74	.70	.66	.63	.59	.56	.53	.48	.46	.44	.39														
2.0	.76	.68	.62	.70	.63	.58	.59	.54	.49	.49	.45	.42	.40	.37	.34	.30														
3.0	.66	.57	.50	.61	.53	.47	.51	.45	.40	.43	.38	.34	.35	.31	.28	.24														
4.0	.57	.48	.41	.53	.45	.39	.45	.38	.33	.37	.32	.28	.30	.26	.23	.19														
5.0	.51	.42	.35	.47	.39	.32	.40	.33	.28	.33	.28	.24	.27	.23	.20	.16														
6.0	.45	.36	.30	.42	.34	.28	.36	.29	.24	.30	.24	.20	.24	.20	.17	.14														
7.0	.41	.32	.26	.38	.30	.24	.32	.26	.21	.27	.22	.18	.22	.18	.15	.12														
8.0	.37	.28	.23	.34	.26	.21	.29	.23	.18	.24	.19	.16	.20	.16	.13	.11														
9.0	.33	.25	.20	.31	.24	.19	.27	.21	.16	.22	.17	.14	.18	.14	.12	.09														
10.0	.31	.23	.18	.28	.21	.17	.24	.19	.15	.21	.16	.12	.17	.13	.10	.08														



C Range: 0 - 360DEG
C Interval: 30.0DEG
Test Speed: HIGH
Temperature:25.3℃
Operators:
Test Date:2025-03-03

γ Range: 0 - 180DEG
γ Interval: 1.0DEG
Test System:EVERFINE GO-2000B_V1 SYSTEM V2.00.488
Humidity:65.0%
Test Distance:6.360m [K=1.0000]
Remarks:

WEC AND CCEC

Test:U:24.00V I:0.6908A P:16.58W PF:1.000 Freq:0Hz Lamp Flux:825.804x1 lm		
NAME: SF24-24V-2835-288-U2-3000K	TYPE:	WEIGHT:
SPEC.:	DIM.: Length=1m	SERIAL No.:
MFR.: OLympia lighting	SUR.:	Shielding Angle:

pcc	80%			70%			50%			30%			10%			0	
pw	50%	30%	10%	50%	30%	10%	50%	30%	10%	50%	30%	10%	50%	30%	10%	0	
pfc	20%			20%			20%			20%			20%			0	
RCR	RCR:Room Cavity Ratio						Wall Exitance Coefficients(WEC)										
0.0																	
1.0	.385	.219	.069	.364	.208	.066	.325	.187	.060	.290	.167	.054	.257	.149	.048		
2.0	.327	.179	.055	.308	.170	.052	.273	.152	.047	.240	.135	.042	.210	.119	.037		
3.0	.288	.153	.046	.271	.145	.044	.239	.129	.039	.209	.114	.035	.181	.100	.031		
4.0	.258	.134	.039	.243	.127	.038	.213	.113	.034	.185	.100	.030	.160	.087	.026		
5.0	.234	.119	.035	.220	.113	.033	.193	.100	.030	.167	.088	.026	.143	.077	.023		
6.0	.214	.108	.031	.201	.102	.029	.176	.090	.026	.152	.079	.023	.130	.069	.020		
7.0	.198	.098	.028	.185	.092	.026	.162	.082	.024	.140	.072	.021	.120	.062	.018		
8.0	.183	.089	.025	.172	.085	.024	.150	.075	.021	.130	.066	.019	.111	.057	.017		
9.0	.171	.082	.023	.160	.078	.022	.140	.069	.020	.121	.061	.017	.103	.052	.015		
10.0	.159	.076	.021	.150	.072	.020	.131	.064	.018	.113	.056	.016	.096	.048	.014		

pcc	80%			70%			50%			30%			10%			0
pw	50%	30%	10%	50%	30%	10%	50%	30%	10%	50%	30%	10%	50%	30%	10%	0
pfc	20%			20%			20%			20%			20%			0
RCR	RCR:Room Cavity Ratio						Ceiling Cavity Exitance Coefficients (CCEC)									
0.0	.531	.531	.531	.454	.454	.454	.310	.310	.310	.178	.178	.178	.057	.057	.057	
1.0	.529	.499	.472	.453	.428	.406	.310	.295	.281	.178	.171	.163	.057	.055	.053	
2.0	.523	.478	.440	.448	.411	.380	.307	.284	.265	.177	.165	.155	.057	.054	.051	
3.0	.516	.462	.419	.442	.399	.364	.304	.277	.255	.175	.162	.150	.056	.053	.049	
4.0	.508	.450	.406	.436	.389	.353	.300	.271	.249	.174	.159	.147	.056	.052	.048	
5.0	.501	.441	.397	.430	.382	.345	.296	.267	.244	.172	.157	.145	.055	.051	.048	
6.0	.494	.434	.391	.425	.376	.340	.293	.263	.241	.170	.155	.143	.055	.051	.047	
7.0	.487	.428	.386	.419	.371	.336	.290	.260	.238	.168	.153	.142	.054	.050	.047	
8.0	.481	.422	.382	.414	.366	.333	.287	.257	.236	.167	.152	.141	.054	.050	.047	
9.0	.475	.418	.379	.409	.363	.331	.284	.255	.235	.165	.151	.140	.053	.049	.046	
10.0	.469	.414	.377	.405	.360	.329	.281	.253	.234	.164	.150	.140	.053	.049	.046	

C Range: 0 - 360DEG
C Interval: 30.0DEG
Test Speed: HIGH
Temperature:25.3℃
Operators:
Test Date:2025-03-03

γ Range: 0 - 180DEG
γ Interval: 1.0DEG
Test System:EVERFINE GO-2000B_V1 SYSTEM V2.00.488
Humidity:65.0%
Test Distance:6.360m [K=1.0000]
Remarks:

UGR(Unified Glare Rating) Table

Test:U:24.00V I:0.6908A P:16.58W PF:1.000 Freq:0Hz Lamp Flux:825.804x1 lm											
NAME: SF24-24V-2835-288-U2-3000K					TYPE:			WEIGHT:			
SPEC.:					DIM.: Length=1m			SERIAL No.:			
MFR.: OLympia lighting					SUR.:			Shielding Angle:			
ceiling/cavity	0.7	0.7	0.5	0.5	0.3	0.7	0.7	0.5	0.5	0.3	
walls	0.5	0.3	0.5	0.3	0.3	0.5	0.3	0.5	0.3	0.3	
working plane	0.2	0.2	0.2	0.2	0.2	0.2	0.2	0.2	0.2	0.2	
Room dimensions		Viewed crosswise					Viewed endwise				
x = 2H y = 2H	2H	18.9	20.0	19.7	20.8	21.9	15.5	16.6	16.3	17.4	18.4
	3H	22.2	23.2	23.0	24.0	25.1	17.2	18.2	18.1	19.1	20.2
	4H	24.0	25.0	24.9	25.8	27.0	18.1	19.0	18.9	19.9	21.0
	6H	26.1	27.0	27.0	27.9	29.0	18.8	19.7	19.7	20.6	21.7
	8H	27.3	28.1	28.1	29.0	30.1	19.1	20.0	20.0	20.9	22.0
	12H	28.6	29.4	29.5	30.3	31.5	19.4	20.2	20.3	21.1	22.3
4H	2H	19.4	20.3	20.2	21.2	22.3	17.0	18.0	17.9	18.9	20.0
	3H	22.9	23.8	23.8	24.7	25.8	19.0	19.9	19.9	20.8	21.9
	4H	25.0	25.7	25.9	26.7	27.8	20.1	20.8	21.0	21.7	22.9
	6H	27.3	27.9	28.2	28.9	30.1	21.0	21.7	22.0	22.6	23.8
	8H	28.6	29.2	29.5	30.1	31.3	21.5	22.1	22.4	23.0	24.2
	12H	30.0	30.6	31.0	31.6	32.8	21.8	22.4	22.8	23.3	24.6
8H	4H	25.3	25.9	26.3	26.9	28.1	21.7	22.3	22.6	23.2	24.4
	6H	27.9	28.5	28.9	29.4	30.7	23.0	23.5	24.0	24.5	25.7
	8H	29.4	29.9	30.4	30.9	32.1	23.7	24.1	24.6	25.1	26.4
	12H	31.2	31.6	32.2	32.6	33.9	24.3	24.7	25.3	25.7	27.0
12H	4H	25.3	25.9	26.3	26.9	28.1	22.2	22.8	23.2	23.8	25.0
	6H	28.0	28.5	29.0	29.5	30.8	23.9	24.3	24.8	25.3	26.6
	8H	29.7	30.1	30.7	31.1	32.4	24.7	25.1	25.7	26.1	27.4
Variations with the observer position at spacings(CIE Pub.117):											
S = 1.0H		+ 0.1 / - 0.1					+ 0.1 / - 0.1				
1.5H		+ 0.2 / - 0.3					+ 0.2 / - 0.2				
2.0H		+ 0.3 / - 0.3					+ 0.3 / - 0.4				

CIE Pub.117, 825.8 lm Total Lamp Luminous Flux Correct (8log(F/F0) = -0.7)
Area: 0.024 m2

C Range: 0 - 360DEG
C Interval: 30.0DEG
Test Speed: HIGH
Temperature:25.3℃
Operators:
Test Date:2025-03-03

γ Range: 0 - 180DEG
γ Interval: 1.0DEG
Test System:EVERFINE GO-2000B_V1 SYSTEM V2.00.488
Humidity:65.0%
Test Distance:6.360m [K=1.0000]
Remarks:

UTILIZATION FACTORS TABLE

Test:U:24.00V I:0.6908A P:16.58W PF:1.000 Freq:0Hz Lamp Flux:825.804x1 lm		
NAME: SF24-24V-2835-288-U2-3000K	TYPE:	WEIGHT:
SPEC.:	DIM.: Length=1m	SERIAL No.:
MFR.: OLympia lighting	SUR.:	Shielding Angle:

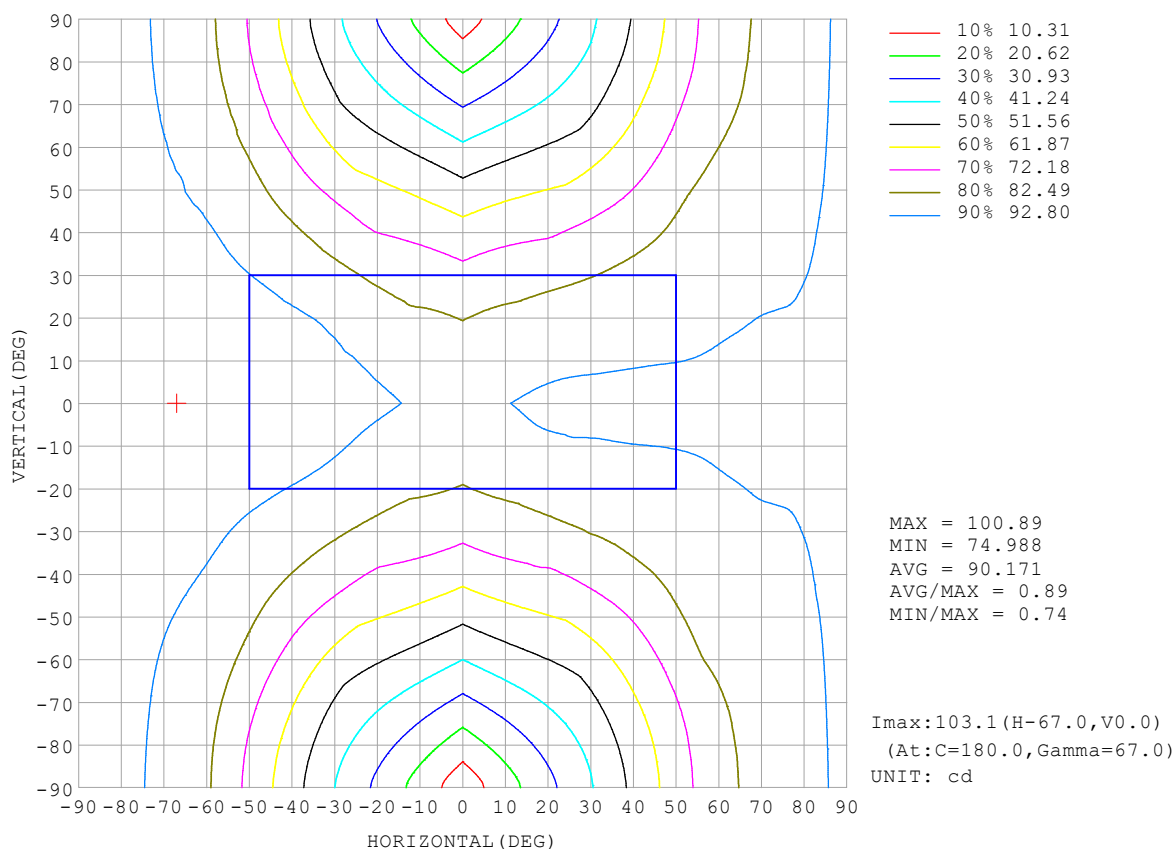
REFLECTANCE										
Ceiling	0.8	0.8	0.8	0.7	0.7	0.7	0.5	0.5	0.5	0
Walls	0.7	0.5	0.3	0.7	0.5	0.3	0.7	0.5	0.3	0
Working plane	0.2	0.2	0.2	0.2	0.2	0.2	0.2	0.2	0.2	0
ROOM INDEX	UTILIZATION FACTORS (PERCENT) $k(RI) \times RCR = 5$									
$k = 0.60$	39	27	20	37	26	19	34	24	18	11
0.80	48	35	27	45	33	26	41	30	24	15
1.00	55	42	33	52	40	32	46	38	29	18
1.25	62	49	40	58	46	38	51	42	35	22
1.50	68	55	45	63	51	43	55	46	39	24
2.00	75	63	54	70	59	51	61	52	46	29
2.50	80	69	60	74	65	57	64	56	50	31
3.00	84	74	65	78	69	62	67	60	54	34
4.00	89	80	73	82	75	68	71	65	60	37
5.00	92	84	78	85	79	73	73	68	64	40
ROOM INDEX	UF (total)									Direct
According to DIN EN 13032-2 2004			Suspended					SHRNOM = 1.25		

C Range: 0 - 360DEG
 C Interval: 30.0DEG
 Test Speed: HIGH
 Temperature: 25.3°C
 Operators:
 Test Date: 2025-03-03

γ Range: 0 - 180DEG
 γ Interval: 1.0DEG
 Test System: EVERFINE GO-2000B_V1 SYSTEM V2.00.488
 Humidity: 65.0%
 Test Distance: 6.360m [K=1.0000]
 Remarks:

ISOCANDELA DIAGRAM

Test:U:24.00V I:0.6908A P:16.58W PF:1.000 Freq:0Hz Lamp Flux:825.804x1 lm		
NAME: SF24-24V-2835-288-U2-3000K	TYPE:	WEIGHT:
SPEC.:	DIM.: Length=1m	SERIAL No.:
MFR.: OLympia lighting	SUR.:	Shielding Angle:

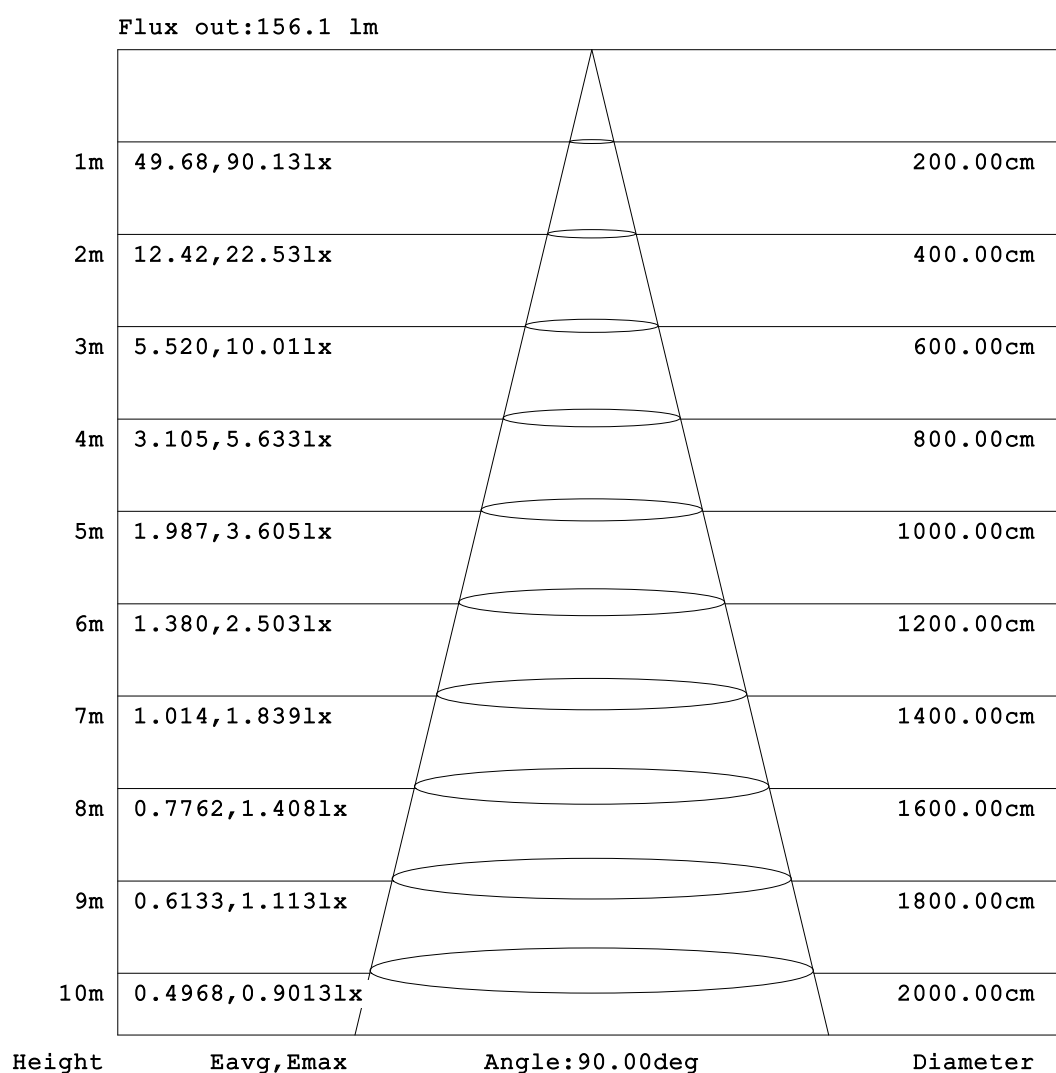


C Range: 0 - 360DEG
C Interval: 30.0DEG
Test Speed: HIGH
Temperature:25.3℃
Operators:
Test Date:2025-03-03

γ Range: 0 - 180DEG
γ Interval: 1.0DEG
Test System:EVERFINE GO-2000B_V1 SYSTEM V2.00.488
Humidity:65.0%
Test Distance:6.360m [K=1.0000]
Remarks:

AAI Figure

Test:U:24.00V I:0.6908A P:16.58W PF:1.000 Freq:0Hz Lamp Flux:825.804x1 lm		
NAME: SF24-24V-2835-288-U2-3000K	TYPE:	WEIGHT:
SPEC.:	DIM.: Length=1m	SERIAL No.:
MFR.: OLympia lighting	SUR.:	Shielding Angle:



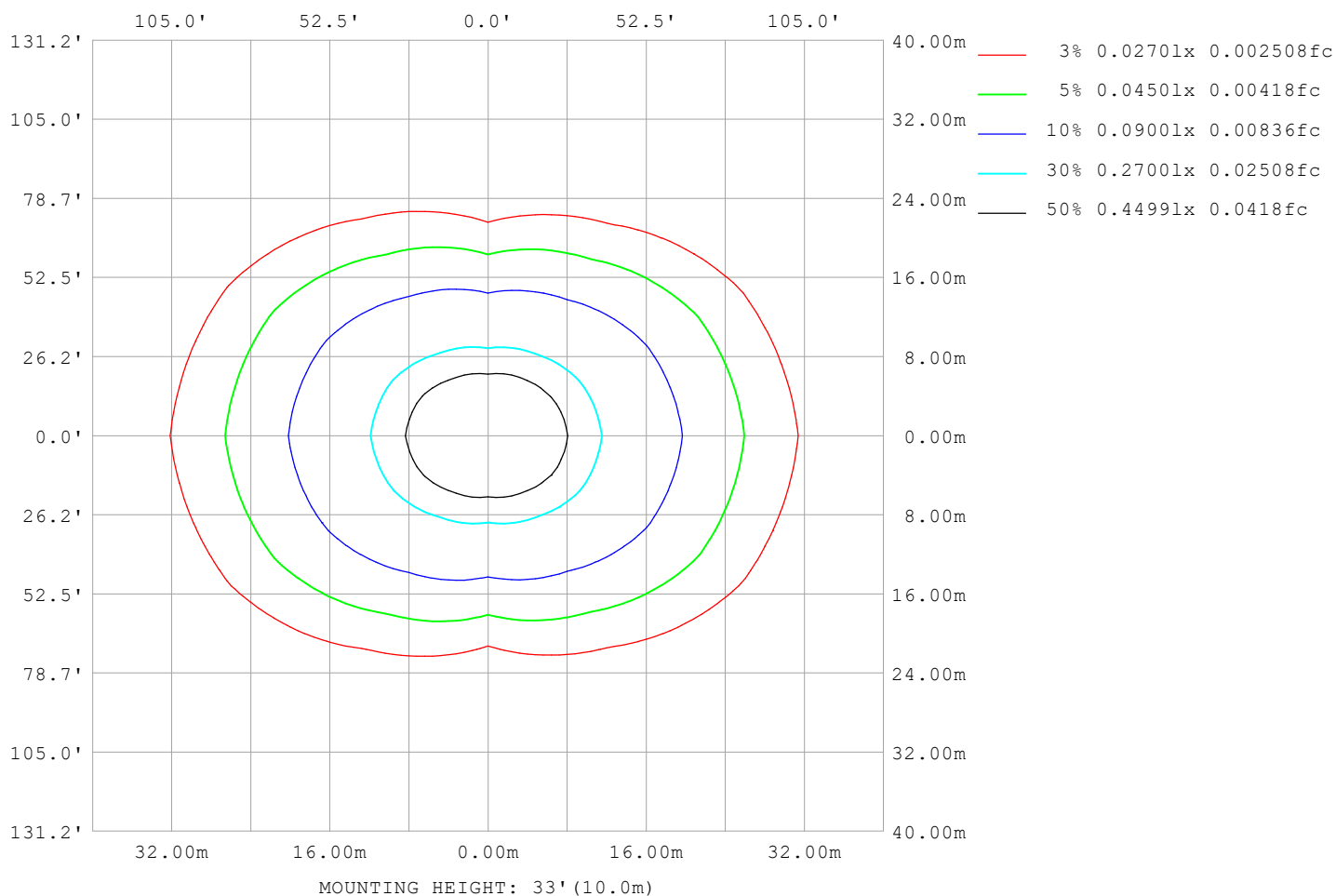
Note: The Curves indicate the illuminated area and the average illumination when the luminaire is at different distance.

C Range: 0 - 360DEG
C Interval: 30.0DEG
Test Speed: HIGH
Temperature: 25.3°C
Operators:
Test Date: 2025-03-03

γ Range: 0 - 180DEG
γ Interval: 1.0DEG
Test System: EVERFINE GO-2000B_V1 SYSTEM V2.00.488
Humidity: 65.0%
Test Distance: 6.360m [K=1.0000]
Remarks:

ISOLUX DIAGRAM

Test:U:24.00V I:0.6908A P:16.58W PF:1.000 Freq:0Hz Lamp Flux:825.804x1 lm		
NAME: SF24-24V-2835-288-U2-3000K	TYPE:	WEIGHT:
SPEC.:	DIM.: Length=1m	SERIAL No.:
MFR.: OLympia lighting	SUR.:	Shielding Angle:



C Range: 0 - 360DEG
C Interval: 30.0DEG
Test Speed: HIGH
Temperature: 25.3°C
Operators:
Test Date: 2025-03-03

γ Range: 0 - 180DEG
γ Interval: 1.0DEG
Test System: EVERFINE GO-2000B_V1 SYSTEM V2.00.488
Humidity: 65.0%
Test Distance: 6.360m [K=1.0000]
Remarks:

LED Avg.L Report

Test:U:24.00V I:0.6908A P:16.58W PF:1.000 Freq:0Hz Lamp Flux:825.804x1 lm		
NAME: SF24-24V-2835-288-U2-3000K	TYPE:	WEIGHT:
SPEC.:	DIM.: Length=1m	SERIAL No.:
MFR.: OLympia lighting	SUR.:	Shielding Angle:

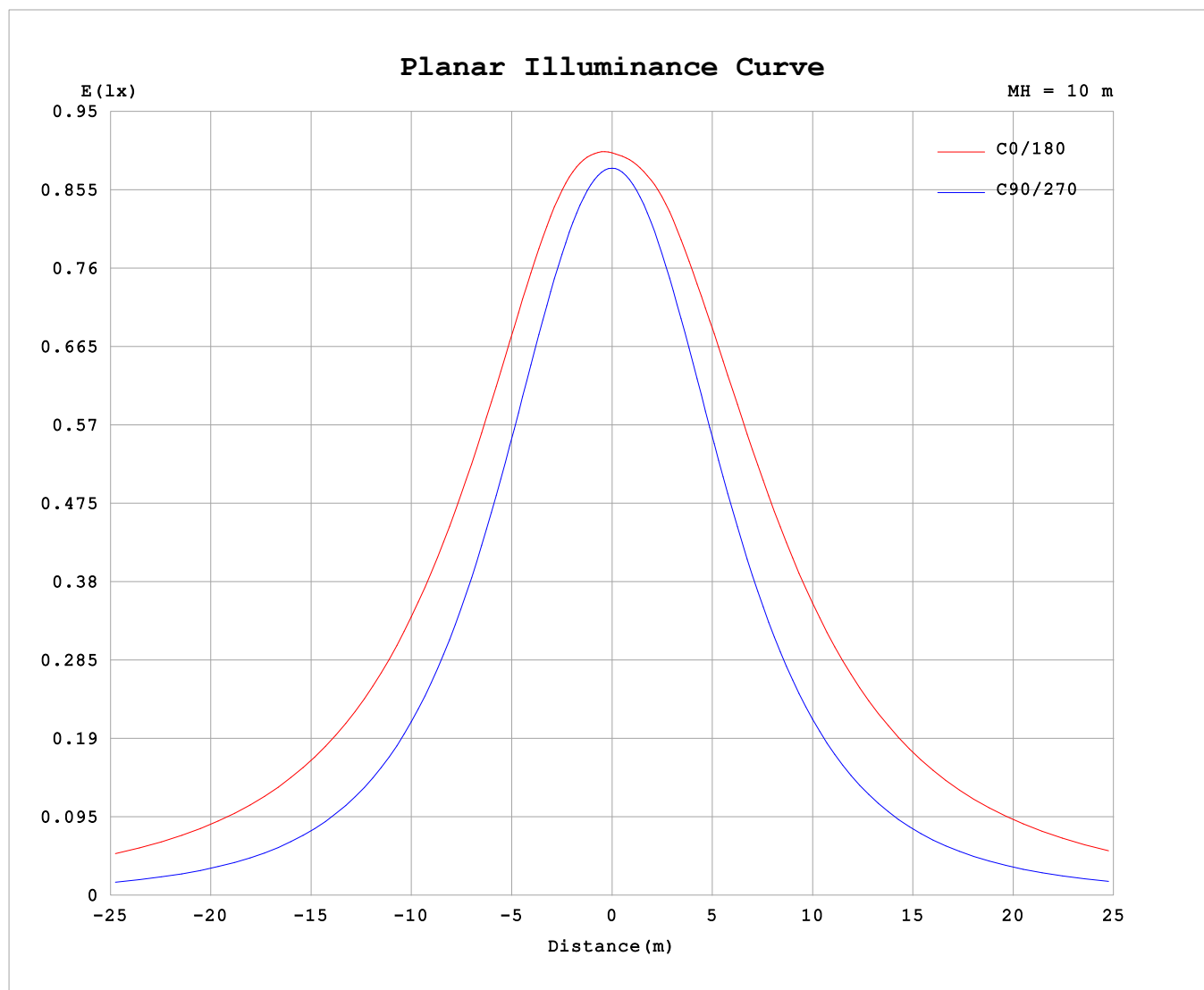
AvgL	cd/m2
L_0~180 (65) av	9663
L_0~180 (75) av	15713
L_0~180 (85) av	46450
L_90~270 (65) av	3526
L_90~270 (75) av	3669
L_90~270 (85) av	4761
L_45 (65) av	6973
L_45 (75) av	10763
L_45 (85) av	30524

Standard: GB/T 29293-2012

C Range: 0 - 360DEG
C Interval: 30.0DEG
Test Speed: HIGH
Temperature:25.3℃
Operators:
Test Date:2025-03-03

γ Range: 0 - 180DEG
γ Interval: 1.0DEG
Test System:EVERFINE GO-2000B_V1 SYSTEM V2.00.488
Humidity:65.0%
Test Distance:6.360m [K=1.0000]
Remarks:

Planar Illuminance Curve



C Range: 0 - 360DEG
C Interval: 30.0DEG
Test Speed: HIGH
Temperature: 25.3 °C
Operators:
Test Date: 2025-03-03

γ Range: 0 - 180DEG
 γ Interval: 1.0DEG
Test System: EVERFINE GO-2000B_V1 SYSTEM V2.00.488
Humidity: 65.0%
Test Distance: 6.360m [K=1.0000]
Remarks:

LUMINOUS DISTRIBUTION INTENSITY DATA

Test:U:24.00V I:0.6908A P:16.58W PF:1.000 Freq:0Hz Lamp Flux:825.804x1 lm																	
NAME: SF24-24V-2835-288-U2-3000K									TYPE:						WEIGHT:		
SPEC.:									DIM.: Length=1m						SERIAL No.:		
MFR.: OLympia lighting									SUR.:						Shielding Angle:		

Table--1

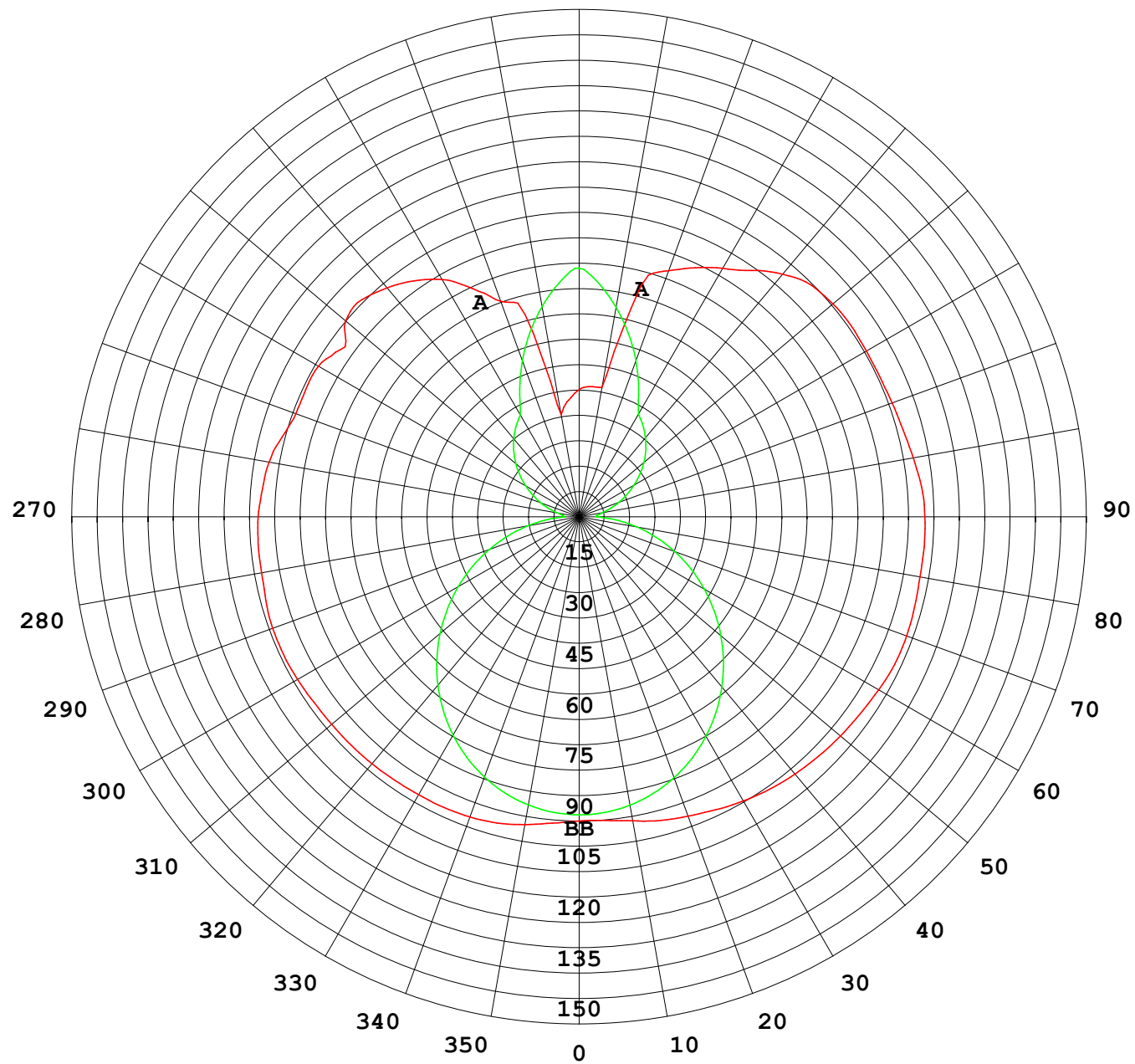
UNIT: cd

C (DEG) γ (DEG)	0	30	60	90	120	150	180	210	240	270	300	330						
0	88.4	88.4	88.4	88.4	88.4	88.4	88.4	88.4	88.4	88.4	88.4	88.4						
5	89.4	88.9	88.4	88.0	88.3	88.6	88.6	88.3	88.1	88.0	88.3	88.9						
10	90.8	89.8	87.8	86.9	87.7	89.3	89.7	89.0	87.7	86.9	87.9	89.8						
15	92.1	90.6	87.2	84.9	86.8	90.0	91.4	89.9	86.8	85.0	87.3	90.6						
20	92.8	90.9	86.0	82.2	85.3	90.5	92.6	90.3	85.6	82.4	85.9	90.8						
25	93.2	90.4	84.0	78.8	83.3	90.7	93.9	90.6	83.7	79.1	84.1	90.5						
30	93.3	89.8	81.4	74.9	80.8	90.9	95.4	90.6	81.7	75.3	81.5	89.8						
35	93.5	89.0	78.3	70.3	77.8	91.0	96.6	91.1	78.8	70.8	78.4	88.9						
40	93.7	88.1	74.7	65.2	74.5	90.7	97.6	91.1	75.7	65.9	74.8	87.9						
45	93.8	87.0	70.7	59.7	70.8	90.2	98.4	90.7	72.3	60.6	70.8	86.9						
50	93.9	85.9	66.5	53.9	67.2	89.5	99.2	90.2	69.0	54.9	66.7	85.7						
55	94.1	84.8	62.3	47.7	63.2	88.8	99.8	89.7	65.3	49.0	62.5	84.4						
60	94.5	83.9	57.8	41.4	58.9	88.1	101	89.0	61.2	42.9	58.1	83.5						
65	94.8	83.4	53.6	35.0	54.8	87.7	101	88.5	57.4	36.6	53.8	82.9						
70	94.8	82.7	49.9	28.4	51.1	87.1	101	87.9	53.8	30.2	49.9	82.2						
75	94.3	81.6	46.9	21.9	48.0	86.2	101	87.0	50.8	23.7	46.8	81.2						
80	93.7	80.6	44.4	15.4	45.4	85.2	101	86.1	48.1	17.3	44.0	80.0						
85	93.7	79.9	42.3	9.09	43.1	84.5	101	85.2	45.6	10.8	41.5	79.1						
90	93.3	79.7	40.9	4.32	41.6	84.3	100	84.8	43.9	5.21	39.7	78.6						
95	92.4	79.5	39.5	4.89	41.5	84.0	99.9	84.7	43.2	5.39	38.8	78.2						
100	91.5	77.5	34.2	6.52	42.8	83.5	98.6	83.9	44.3	6.90	33.5	76.9						
105	89.4	73.5	32.9	9.16	44.6	83.1	97.5	83.3	45.9	9.49	32.2	74.1						
110	87.6	71.9	33.5	12.1	47.4	83.2	96.8	83.1	48.2	12.6	33.5	71.7						
115	87.7	69.9	37.9	15.1	50.9	83.8	96.4	83.7	51.4	15.6	37.1	69.5						
120	87.6	69.4	41.1	18.3	54.2	84.7	96.4	84.5	54.8	18.8	39.9	72.8						
125	84.7	76.4	40.1	21.5	55.4	85.6	96.6	85.4	57.5	22.0	39.4	76.0						
130	88.6	76.2	39.6	24.5	55.9	86.2	96.3	86.2	58.9	25.1	40.7	73.4						
135	89.3	69.2	35.7	27.5	58.2	85.9	95.3	85.9	60.9	28.0	39.4	65.9						
140	86.9	59.1	32.4	30.2	60.5	82.9	92.1	83.5	62.8	30.7	38.6	61.7						
145	83.7	51.2	32.1	32.7	63.3	79.4	87.4	80.1	64.9	33.1	38.1	55.5						
150	79.6	44.1	30.0	35.0	65.7	78.6	83.4	78.7	66.7	35.3	37.7	48.2						
155	73.2	36.5	30.9	41.8	66.5	76.7	79.9	76.6	67.7	41.9	39.4	43.2						
160	66.6	31.8	40.4	49.3	67.3	75.2	76.1	75.1	68.3	49.3	44.8	40.7						
165	60.8	30.4	50.0	56.6	68.7	73.8	69.3	73.6	69.6	56.5	51.9	40.2						
170	30.1	41.5	59.2	63.4	69.7	73.3	38.2	73.3	70.3	63.2	60.1	46.3						
175	34.2	55.7	67.5	69.6	71.5	73.4	38.0	73.1	71.8	69.3	67.6	57.2						
180	37.0	68.5	74.0	73.8	73.5	68.7	37.1	68.3	74.0	73.7	73.8	68.6						

C Range: 0 - 360DEG
C Interval: 30.0DEG
Test Speed: HIGH
Temperature:25.3℃
Operators:
Test Date:2025-03-03

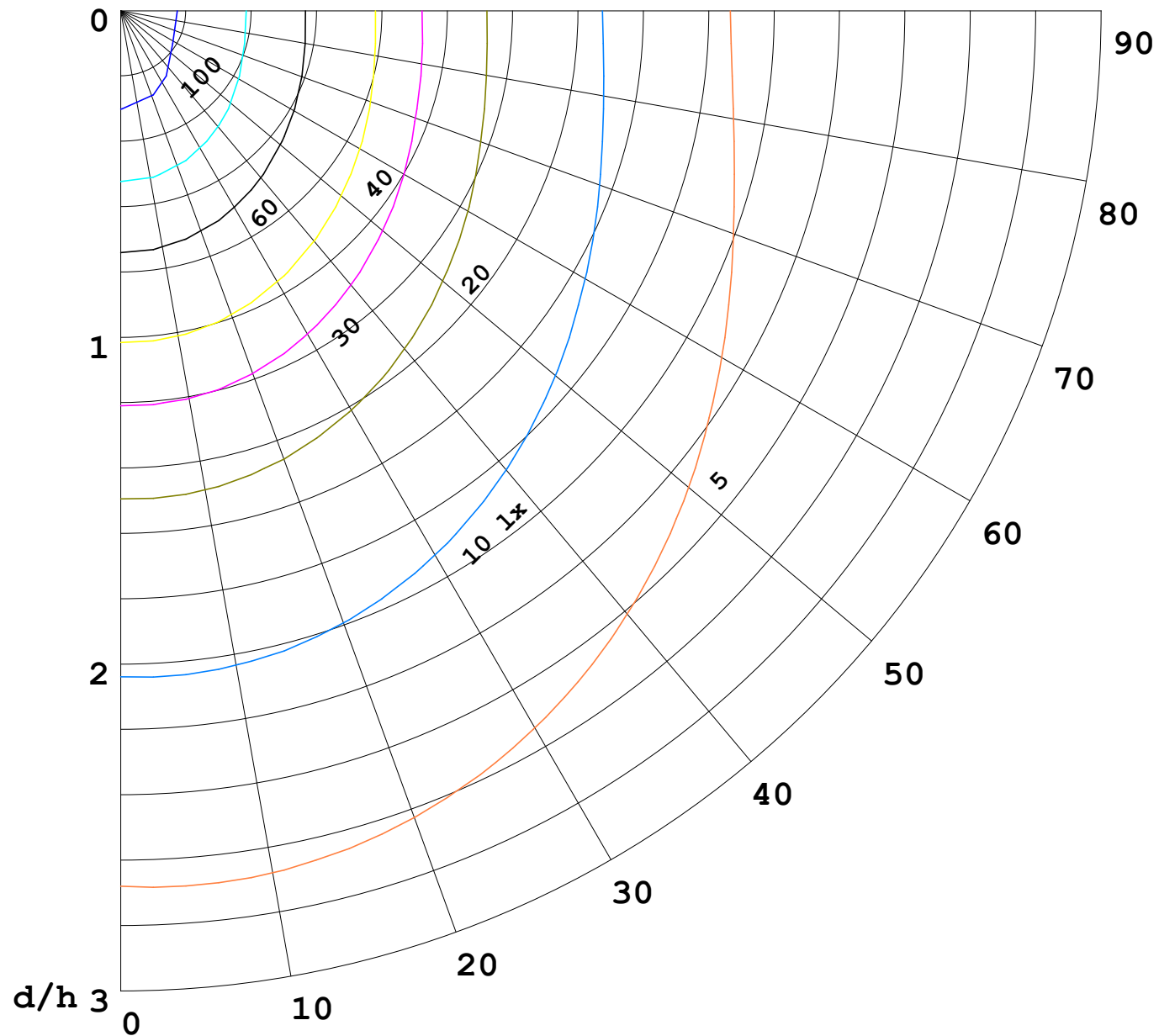
γ Range: 0 - 180DEG
γ Interval: 1.0DEG
Test System:EVERFINE GO-2000B_V1 SYSTEM V2.00.488
Humidity:65.0%
Test Distance:6.360m [K=1.0000]
Remarks:

I (cd)



1000 lm

$\kappa = 1$



F = 1000 lm
 K = 0.7
 Hcc = 0.8 m
 Hfc = 0.0 m
 Eave = 100 lx

	Pcc	Pw	Pfc
—————	70	50	30
—————	50	30	20

